



wwPDB X-ray Structure Validation Summary Report ⓘ

Mar 5, 2026 – 11:21 AM UTC

PDB ID : 3MXA / pdb_00003mxa
Title : Molecular basis of engineered meganuclease targeting of the endogenous human RAG1 locus
Authors : Munoz, I.G.; Prieto, J.; Subramanian, S.; Coloma, J.; Montoya, G.
Deposited on : 2010-05-07
Resolution : 2.30 Å (reported)

This is a wwPDB X-ray Structure Validation Summary Report for a publicly released PDB entry.

We welcome your comments at validation@mail.wwpdb.org

A user guide is available at

<https://www.wwpdb.org/validation/2017/XrayValidationReportHelp>

with specific help available everywhere you see the ⓘ symbol.

The types of validation reports are described at

<http://www.wwpdb.org/validation/2017/FAQs#types>.

The following versions of software and data (see [references ⓘ](#)) were used in the production of this report:

MolProbity : 4-5-2 with Phenix2.0
Mogul : 2022.3.0, CSD as543be (2022)
Xtriage (Phenix) : 2.0
EDS : 3.0
Percentile statistics : 20250101.v01 (using entries in the PDB archive January 1st 2025)
CCP4 : 9.0.010 (Gargrove)
Density-Fitness : 1.0.12
Ideal geometry (proteins) : Engh & Huber (2001)
Ideal geometry (DNA, RNA) : Parkinson et al. (1996)
Validation Pipeline (wwPDB-VP) : 2.49

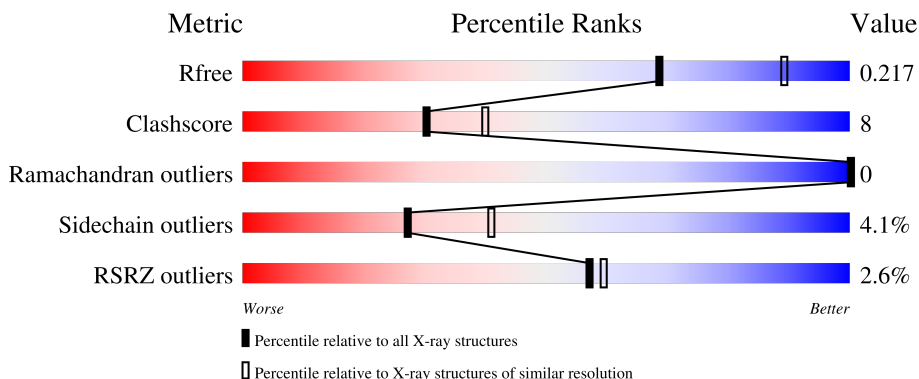
1 Overall quality at a glance

The following experimental techniques were used to determine the structure:

X-RAY DIFFRACTION

The reported resolution of this entry is 2.30 Å.

Percentile scores (ranging between 0-100) for global validation metrics of the entry are shown in the following graphic. The table shows the number of entries on which the scores are based.



Metric	Whole archive (#Entries)	Similar resolution (#Entries, resolution range(Å))
R_{free}	180053	6319 (2.30-2.30)
Clashscore	190562	6919 (2.30-2.30)
Ramachandran outliers	187476	6854 (2.30-2.30)
Sidechain outliers	187428	6854 (2.30-2.30)
RSRZ outliers	180081	6325 (2.30-2.30)

The table below summarises the geometric issues observed across the polymeric chains and their fit to the electron density. The red, orange, yellow and green segments of the lower bar indicate the fraction of residues that contain outliers for ≥ 3 , 2, 1 and 0 types of geometric quality criteria respectively. A grey segment represents the fraction of residues that are not modelled. The numeric value for each fraction is indicated below the corresponding segment, with a dot representing fractions $\leq 5\%$. The upper red bar (where present) indicates the fraction of residues that have poor fit to the electron density. The numeric value is given above the bar.

Mol	Chain	Length	Quality of chain
1	A	362	
2	C	14	
3	D	10	
4	E	14	
5	F	10	

2 Entry composition [i](#)

There are 9 unique types of molecules in this entry. The entry contains 3534 atoms, of which 0 are hydrogens and 0 are deuteriums.

In the tables below, the ZeroOcc column contains the number of atoms modelled with zero occupancy, the AltConf column contains the number of residues with at least one atom in alternate conformation and the Trace column contains the number of residues modelled with at most 2 atoms.

- Molecule 1 is a protein called scV3V2(G19S).

Mol	Chain	Residues	Atoms					ZeroOcc	AltConf	Trace
			Total	C	N	O	S			
1	A	301	2406	1545	411	448	2	0	0	0

- Molecule 2 is a DNA chain called DNA (5'-D(*TP*TP*GP*TP*TP*CP*TP*CP*AP*GP*GP*TP*AP*C)-3').

Mol	Chain	Residues	Atoms					ZeroOcc	AltConf	Trace
			Total	C	N	O	P			
2	C	14	282	137	46	86	13	0	0	0

- Molecule 3 is a DNA chain called DNA (5'-D(P*CP*TP*CP*AP*GP*CP*CP*AP*GP*A)-3').

Mol	Chain	Residues	Atoms					ZeroOcc	AltConf	Trace
			Total	C	N	O	P			
3	D	10	204	96	39	59	10	0	0	0

- Molecule 4 is a DNA chain called DNA (5'-D(*TP*CP*TP*GP*GP*CP*TP*GP*AP*GP*GP*TP*AP*C)-3').

Mol	Chain	Residues	Atoms					ZeroOcc	AltConf	Trace
			Total	C	N	O	P			
4	E	14	286	137	52	84	13	0	0	0

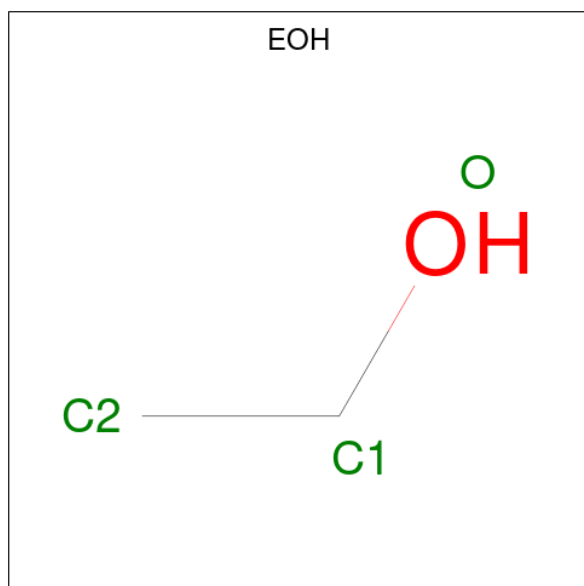
- Molecule 5 is a DNA chain called DNA (5'-D(P*CP*TP*GP*AP*GP*AP*AP*CP*AP*A)-3').

Mol	Chain	Residues	Atoms					ZeroOcc	AltConf	Trace
			Total	C	N	O	P			
5	F	10	208	98	43	57	10	0	0	0

- Molecule 6 is MANGANESE (II) ION (CCD ID: MN) (formula: Mn).

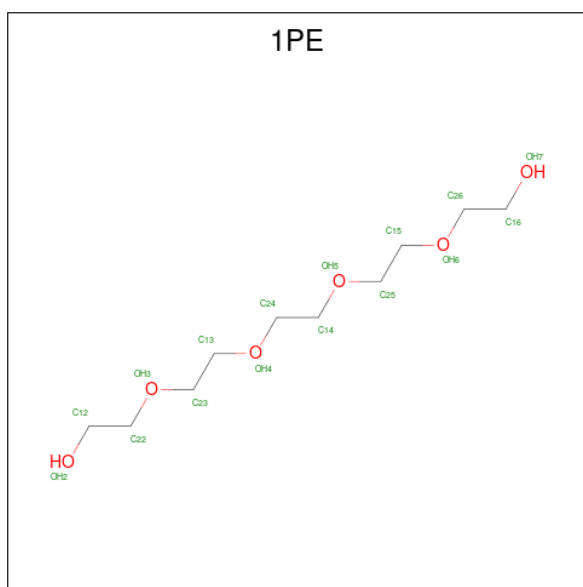
Mol	Chain	Residues	Atoms		ZeroOcc	AltConf
6	A	3	Total	Mn	0	0
			3	3		

- Molecule 7 is ETHANOL (CCD ID: EOH) (formula: C_2H_6O).



Mol	Chain	Residues	Atoms			ZeroOcc	AltConf
7	A	1	Total	C	O	0	0
			3	2	1		
7	A	1	Total	C	O	0	0
			3	2	1		
7	A	1	Total	C	O	0	0
			3	2	1		

- Molecule 8 is PENTAETHYLENE GLYCOL (CCD ID: 1PE) (formula: $C_{10}H_{22}O_6$).



Mol	Chain	Residues	Atoms		ZeroOcc	AltConf
8	C	1	Total	C O	0	0
			16	10 6		

- Molecule 9 is water.

Mol	Chain	Residues	Atoms		ZeroOcc	AltConf
9	A	83	Total	O	0	0
			83	83		
9	C	14	Total	O	0	0
			14	14		
9	D	9	Total	O	0	0
			9	9		
9	E	7	Total	O	0	0
			7	7		
9	F	7	Total	O	0	0
			7	7		



4 Data and refinement statistics

Property	Value	Source
Space group	P 21 21 2	Depositor
Cell constants a, b, c, α , β , γ	72.00Å 172.39Å 46.53Å 90.00° 90.00° 90.00°	Depositor
Resolution (Å)	28.95 – 2.30 28.95 – 2.30	Depositor EDS
% Data completeness (in resolution range)	99.8 (28.95-2.30) 99.8 (28.95-2.30)	Depositor EDS
R_{merge}	(Not available)	Depositor
R_{sym}	0.08	Depositor
$\langle I/\sigma(I) \rangle$ ¹	3.97 (at 2.29Å)	Xtrriage
Refinement program	PHENIX (phenix.refine: 1.5_2)	Depositor
R, R_{free}	0.174 , 0.224 0.170 , 0.217	Depositor DCC
R_{free} test set	1338 reflections (5.03%)	wwPDB-VP
Wilson B-factor (Å ²)	40.6	Xtrriage
Anisotropy	0.538	Xtrriage
Bulk solvent k_{sol} (e/Å ³), B_{sol} (Å ²)	0.32 , 59.2	EDS
L-test for twinning ²	$\langle L \rangle = 0.48$, $\langle L^2 \rangle = 0.31$	Xtrriage
Estimated twinning fraction	No twinning to report.	Xtrriage
F_o, F_c correlation	0.96	EDS
Total number of atoms	3534	wwPDB-VP
Average B, all atoms (Å ²)	49.0	wwPDB-VP

Xtrriage's analysis on translational NCS is as follows: *The largest off-origin peak in the Patterson function is 4.77% of the height of the origin peak. No significant pseudotranslation is detected.*

¹Intensities estimated from amplitudes.

²Theoretical values of $\langle |L| \rangle$, $\langle L^2 \rangle$ for acentric reflections are 0.5, 0.333 respectively for untwinned datasets, and 0.375, 0.2 for perfectly twinned datasets.

5 Model quality [i](#)

5.1 Standard geometry [i](#)

Bond lengths and bond angles in the following residue types are not validated in this section: 1PE, MN, EOH

The Z score for a bond length (or angle) is the number of standard deviations the observed value is removed from the expected value. A bond length (or angle) with $|Z| > 5$ is considered an outlier worth inspection. RMSZ is the root-mean-square of all Z scores of the bond lengths (or angles).

Mol	Chain	Bond lengths		Bond angles	
		RMSZ	# Z >5	RMSZ	# Z >5
1	A	0.47	0/2451	0.78	5/3318 (0.2%)
2	C	0.32	0/314	1.09	1/483 (0.2%)
3	D	0.27	0/228	0.81	0/347
4	E	0.30	0/320	1.00	2/493 (0.4%)
5	F	0.30	0/234	0.92	0/357
All	All	0.42	0/3547	0.85	8/4998 (0.2%)

There are no bond length outliers.

The worst 5 of 8 bond angle outliers are listed below:

Mol	Chain	Res	Type	Atoms	Z	Observed(°)	Ideal(°)
4	E	614	DC	N1-C1'-C2'	6.77	123.65	113.50
2	C	514	DC	N1-C1'-C2'	6.55	123.33	113.50
1	A	150	ALA	N-CA-C	-5.85	102.93	111.30
1	A	342	VAL	N-CA-C	-5.67	106.28	112.80
4	E	613	DA	O4'-C1'-N9	-5.51	100.14	108.40

There are no chirality outliers.

There are no planarity outliers.

5.2 Too-close contacts [i](#)

In the following table, the Non-H and H(model) columns list the number of non-hydrogen atoms and hydrogen atoms in the chain respectively. The H(added) column lists the number of hydrogen atoms added and optimized by MolProbity. The Clashes column lists the number of clashes within the asymmetric unit, whereas Symm-Clashes lists symmetry-related clashes.

Mol	Chain	Non-H	H(model)	H(added)	Clashes	Symm-Clashes
1	A	2406	0	2438	45	0

Continued on next page...

Continued from previous page...

Mol	Chain	Non-H	H(model)	H(added)	Clashes	Symm-Clashes
2	C	282	0	162	5	0
3	D	204	0	112	0	0
4	E	286	0	159	6	0
5	F	208	0	112	2	0
6	A	3	0	0	0	0
7	A	9	0	18	2	0
8	C	16	0	22	3	0
9	A	83	0	0	2	0
9	C	14	0	0	0	0
9	D	9	0	0	0	0
9	E	7	0	0	0	0
9	F	7	0	0	0	0
All	All	3534	0	3023	54	0

The all-atom clashscore is defined as the number of clashes found per 1000 atoms (including hydrogen atoms). The all-atom clashscore for this structure is 8.

The worst 5 of 54 close contacts within the same asymmetric unit are listed below, sorted by their clash magnitude.

Atom-1	Atom-2	Interatomic distance (Å)	Clash overlap (Å)
1:A:32:SER:HB2	4:E:601:DT:H72	1.69	0.75
5:F:623:DA:H2''	5:F:624:DA:H5''	1.70	0.73
1:A:221:ARG:HB3	1:A:224:ASN:HD22	1.54	0.72
1:A:340:ARG:O	1:A:343:LEU:HG	1.89	0.71
1:A:221:ARG:HD2	1:A:224:ASN:ND2	2.06	0.71

There are no symmetry-related clashes.

5.3 Torsion angles [i](#)

5.3.1 Protein backbone [i](#)

In the following table, the Percentiles column shows the percent Ramachandran outliers of the chain as a percentile score with respect to all X-ray entries followed by that with respect to entries of similar resolution.

The Analysed column shows the number of residues for which the backbone conformation was analysed, and the total number of residues.

Mol	Chain	Analysed	Favoured	Allowed	Outliers	Percentiles	
1	A	297/362 (82%)	286 (96%)	11 (4%)	0	100	100

There are no Ramachandran outliers to report.

5.3.2 Protein sidechains [i](#)

In the following table, the Percentiles column shows the percent sidechain outliers of the chain as a percentile score with respect to all X-ray entries followed by that with respect to entries of similar resolution.

The Analysed column shows the number of residues for which the sidechain conformation was analysed, and the total number of residues.

Mol	Chain	Analysed	Rotameric	Outliers	Percentiles	
1	A	268/323 (83%)	257 (96%)	11 (4%)	27	41

5 of 11 residues with a non-rotameric sidechain are listed below:

Mol	Chain	Res	Type
1	A	264	VAL
1	A	273	LYS
1	A	283	GLN
1	A	277	ASN
1	A	68	ARG

Sometimes sidechains can be flipped to improve hydrogen bonding and reduce clashes. 5 of 10 such sidechains are listed below:

Mol	Chain	Res	Type
1	A	281	GLN
1	A	283	GLN
1	A	322	GLN
1	A	131	GLN
1	A	217	GLN

5.3.3 RNA [i](#)

There are no RNA molecules in this entry.

5.4 Non-standard residues in protein, DNA, RNA chains [i](#)

There are no non-standard protein/DNA/RNA residues in this entry.

5.5 Carbohydrates [i](#)

There are no oligosaccharides in this entry.

5.6 Ligand geometry [i](#)

Of 7 ligands modelled in this entry, 3 are monoatomic - leaving 4 for Mogul analysis.

In the following table, the Counts columns list the number of bonds (or angles) for which Mogul statistics could be retrieved, the number of bonds (or angles) that are observed in the model and the number of bonds (or angles) that are defined in the Chemical Component Dictionary. The Link column lists molecule types, if any, to which the group is linked. The Z score for a bond length (or angle) is the number of standard deviations the observed value is removed from the expected value. A bond length (or angle) with $|Z| > 2$ is considered an outlier worth inspection. RMSZ is the root-mean-square of all Z scores of the bond lengths (or angles).

Mol	Type	Chain	Res	Link	Bond lengths			Bond angles		
					Counts	RMSZ	$\# Z > 2$	Counts	RMSZ	$\# Z > 2$
8	1PE	C	339	-	15,15,15	0.57	0	14,14,14	1.34	3 (21%)
7	EOH	A	367	-	2,2,2	0.45	0	1,1,1	0.22	0
7	EOH	A	366	-	2,2,2	0.48	0	1,1,1	0.13	0
7	EOH	A	368	-	2,2,2	0.51	0	1,1,1	0.01	0

In the following table, the Chirals column lists the number of chiral outliers, the number of chiral centers analysed, the number of these observed in the model and the number defined in the Chemical Component Dictionary. Similar counts are reported in the Torsion and Rings columns. '-' means no outliers of that kind were identified.

Mol	Type	Chain	Res	Link	Chirals	Torsions	Rings
8	1PE	C	339	-	-	7/13/13/13	-

There are no bond length outliers.

All (3) bond angle outliers are listed below:

Mol	Chain	Res	Type	Atoms	Z	Observed(°)	Ideal(°)
8	C	339	1PE	C25-OH5-C14	-3.31	98.78	113.26
8	C	339	1PE	OH5-C25-C15	2.08	119.85	110.35
8	C	339	1PE	OH6-C15-C25	-2.02	101.16	110.35

There are no chirality outliers.

5 of 7 torsion outliers are listed below:

Mol	Chain	Res	Type	Atoms
8	C	339	1PE	C24-C14-OH5-C25
8	C	339	1PE	C12-C22-OH3-C23
8	C	339	1PE	C23-C13-OH4-C24
8	C	339	1PE	OH4-C13-C23-OH3
8	C	339	1PE	C16-C26-OH6-C15

There are no ring outliers.

3 monomers are involved in 5 short contacts:

Mol	Chain	Res	Type	Clashes	Symm-Clashes
8	C	339	1PE	3	0
7	A	367	EOH	1	0
7	A	368	EOH	1	0

5.7 Other polymers [i](#)

There are no such residues in this entry.

5.8 Polymer linkage issues [i](#)

There are no chain breaks in this entry.

6 Fit of model and data [i](#)

6.1 Protein, DNA and RNA chains [i](#)

In the following table, the column labelled ‘#RSRZ> 2’ contains the number (and percentage) of RSRZ outliers, followed by percent RSRZ outliers for the chain as percentile scores relative to all X-ray entries and entries of similar resolution. The OWAB column contains the minimum, median, 95th percentile and maximum values of the occupancy-weighted average B-factor per residue. The column labelled ‘Q< 0.9’ lists the number of (and percentage) of residues with an average occupancy less than 0.9.

Mol	Chain	Analysed	<RSRZ>	#RSRZ>2	OWAB(Å ²)	Q<0.9
1	A	301/362 (83%)	-0.16	9 (2%) 52 54	21, 45, 81, 138	0
2	C	14/14 (100%)	-0.75	0 100 100	29, 48, 69, 78	0
3	D	10/10 (100%)	-0.64	0 100 100	30, 55, 68, 78	0
4	E	14/14 (100%)	-0.34	0 100 100	29, 49, 61, 70	0
5	F	10/10 (100%)	-0.84	0 100 100	27, 45, 72, 76	0
All	All	349/410 (85%)	-0.23	9 (2%) 57 59	21, 46, 80, 138	0

The worst 5 of 9 RSRZ outliers are listed below:

Mol	Chain	Res	Type	RSRZ
1	A	152	LEU	4.7
1	A	341	ALA	3.2
1	A	345	SER	2.9
1	A	342	VAL	2.5
1	A	151	VAL	2.4

6.2 Non-standard residues in protein, DNA, RNA chains [i](#)

There are no non-standard protein/DNA/RNA residues in this entry.

6.3 Carbohydrates [i](#)

There are no oligosaccharides in this entry.

6.4 Ligands [i](#)

In the following table, the Atoms column lists the number of modelled atoms in the group and the number defined in the chemical component dictionary. The B-factors column lists the minimum,

median, 95th percentile and maximum values of B factors of atoms in the group. The column labelled 'Q< 0.9' lists the number of atoms with occupancy less than 0.9.

Mol	Type	Chain	Res	Atoms	RSCC	RSR	B-factors(Å ²)	Q<0.9
7	EOH	A	368	3/3	0.59	0.29	52,52,56,59	0
8	1PE	C	339	16/16	0.80	0.22	71,83,94,94	0
7	EOH	A	367	3/3	0.84	0.19	34,34,52,55	0
7	EOH	A	366	3/3	0.89	0.15	37,37,41,43	0
6	MN	A	364	1/1	0.99	0.02	26,26,26,26	0
6	MN	A	363	1/1	1.00	0.03	27,27,27,27	0
6	MN	A	365	1/1	1.00	0.02	26,26,26,26	0

6.5 Other polymers [i](#)

There are no such residues in this entry.