



wwPDB X-ray Structure Validation Summary Report ⓘ

Mar 5, 2026 – 05:15 PM UTC

PDB ID : 5MX4 / pdb_00005mx4
Title : Crystal structure of H. pylori purine nucleoside phosphorylase from clinical isolate HpPNP-1
Authors : Stefanic, Z.
Deposited on : 2017-01-20
Resolution : 2.31 Å(reported)

This is a wwPDB X-ray Structure Validation Summary Report for a publicly released PDB entry.

We welcome your comments at validation@mail.wwpdb.org

A user guide is available at

<https://www.wwpdb.org/validation/2017/XrayValidationReportHelp>

with specific help available everywhere you see the ⓘ symbol.

The types of validation reports are described at

<http://www.wwpdb.org/validation/2017/FAQs#types>.

The following versions of software and data (see [references ⓘ](#)) were used in the production of this report:

MolProbity : 4-5-2 with Phenix2.0
Mogul : 2022.3.0, CSD as543be (2022)
Xtriage (Phenix) : 2.0
EDS : 3.0
Percentile statistics : 20250101.v01 (using entries in the PDB archive January 1st 2025)
CCP4 : 9.0.010 (Gargrove)
Density-Fitness : 1.0.12
Ideal geometry (proteins) : Engh & Huber (2001)
Ideal geometry (DNA, RNA) : Parkinson et al. (1996)
Validation Pipeline (wwPDB-VP) : 2.49

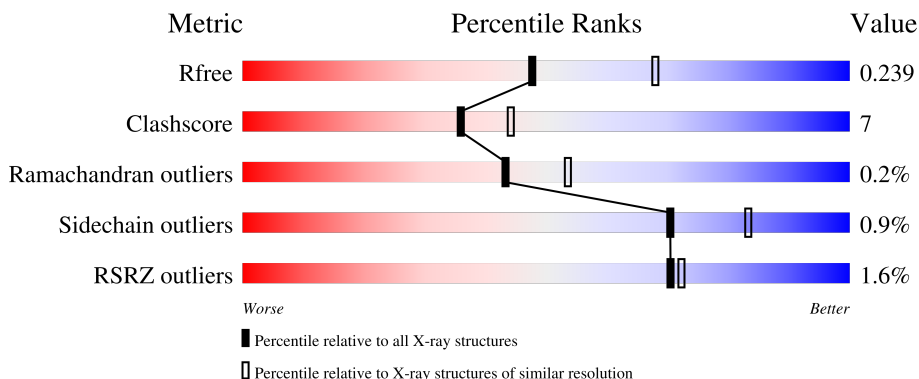
1 Overall quality at a glance

The following experimental techniques were used to determine the structure:

X-RAY DIFFRACTION

The reported resolution of this entry is 2.31 Å.

Percentile scores (ranging between 0-100) for global validation metrics of the entry are shown in the following graphic. The table shows the number of entries on which the scores are based.




Metric	Whole archive (#Entries)	Similar resolution (#Entries, resolution range(Å))
R_{free}	180053	7754 (2.34-2.30)
Clashscore	190562	8383 (2.34-2.30)
Ramachandran outliers	187476	8303 (2.34-2.30)
Sidechain outliers	187428	8303 (2.34-2.30)
RSRZ outliers	180081	7760 (2.34-2.30)

The table below summarises the geometric issues observed across the polymeric chains and their fit to the electron density. The red, orange, yellow and green segments of the lower bar indicate the fraction of residues that contain outliers for ≥ 3 , 2, 1 and 0 types of geometric quality criteria respectively. A grey segment represents the fraction of residues that are not modelled. The numeric value for each fraction is indicated below the corresponding segment, with a dot representing fractions $\leq 5\%$. The upper red bar (where present) indicates the fraction of residues that have poor fit to the electron density. The numeric value is given above the bar.

Mol	Chain	Length	Quality of chain
1	A	233	
1	B	233	
1	C	233	
1	D	233	
1	E	233	

Continued on next page...

Continued from previous page...

Mol	Chain	Length	Quality of chain
1	F	233	 88% 12%

2 Entry composition

There are 4 unique types of molecules in this entry. The entry contains 11702 atoms, of which 0 are hydrogens and 0 are deuteriums.

In the tables below, the ZeroOcc column contains the number of atoms modelled with zero occupancy, the AltConf column contains the number of residues with at least one atom in alternate conformation and the Trace column contains the number of residues modelled with at most 2 atoms.

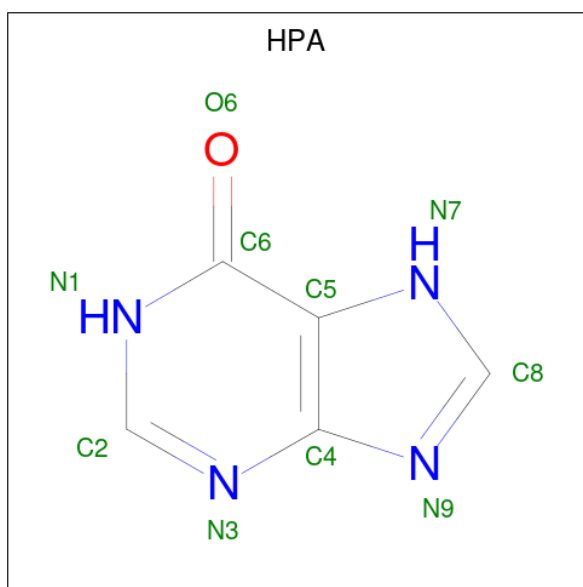
- Molecule 1 is a protein called Purine nucleoside phosphorylase DeoD-type.

Mol	Chain	Residues	Atoms					ZeroOcc	AltConf	Trace
			Total	C	N	O	S			
1	A	233	1802	1150	300	335	17	0	0	0
1	B	233	1813	1157	301	338	17	0	2	0
1	C	233	1805	1152	300	335	18	0	1	0
1	D	233	1802	1150	300	335	17	0	0	0
1	E	233	1802	1150	300	335	17	0	0	0
1	F	233	1808	1154	300	336	18	0	2	0

There are 6 discrepancies between the modelled and reference sequences:

Chain	Residue	Modelled	Actual	Comment	Reference
A	107	THR	ILE	conflict	UNP K2JXG0
B	107	THR	ILE	conflict	UNP K2JXG0
C	107	THR	ILE	conflict	UNP K2JXG0
D	107	THR	ILE	conflict	UNP K2JXG0
E	107	THR	ILE	conflict	UNP K2JXG0
F	107	THR	ILE	conflict	UNP K2JXG0

- Molecule 2 is HYPOXANTHINE (CCD ID: HPA) (formula: C₅H₄N₄O).



Mol	Chain	Residues	Atoms				ZeroOcc	AltConf
			Total	C	N	O		
2	C	1	10	5	4	1	0	0

- Molecule 3 is PHOSPHATE ION (CCD ID: PO4) (formula: O₄P).



Mol	Chain	Residues	Atoms			ZeroOcc	AltConf
			Total	O	P		
3	C	1	5	4	1	0	0

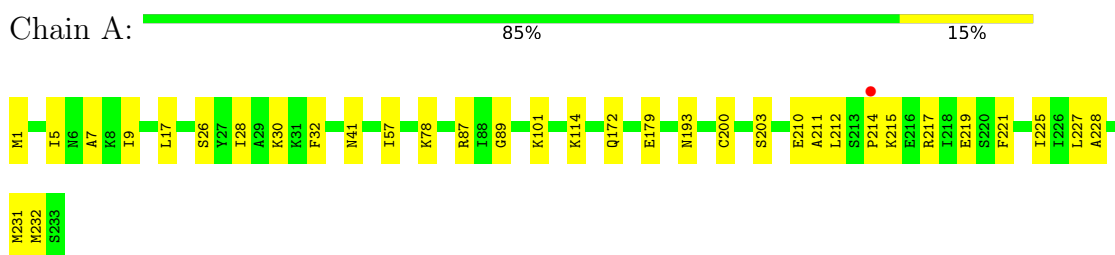
- Molecule 4 is water.

Mol	Chain	Residues	Atoms	ZeroOcc	AltConf
4	A	179	Total O 179 179	0	0
4	B	136	Total O 136 136	0	0
4	C	144	Total O 144 144	0	0
4	D	102	Total O 102 102	0	0
4	E	171	Total O 171 171	0	0
4	F	123	Total O 123 123	0	0

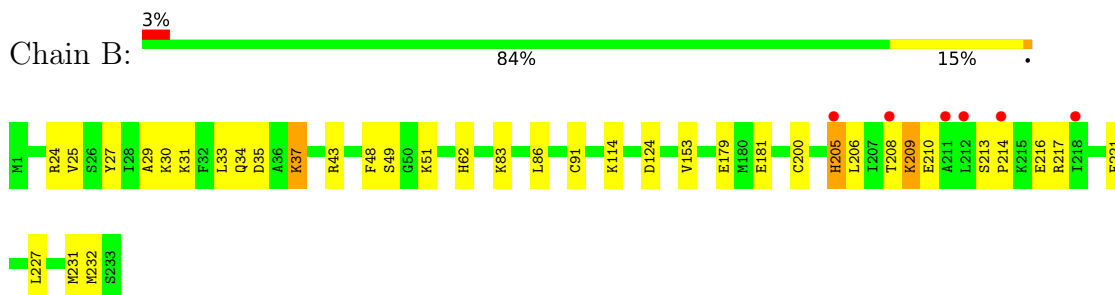
3 Residue-property plots

These plots are drawn for all protein, RNA, DNA and oligosaccharide chains in the entry. The first graphic for a chain summarises the proportions of the various outlier classes displayed in the second graphic. The second graphic shows the sequence view annotated by issues in geometry and electron density. Residues are color-coded according to the number of geometric quality criteria for which they contain at least one outlier: green = 0, yellow = 1, orange = 2 and red = 3 or more. A red dot above a residue indicates a poor fit to the electron density ($RSRZ > 2$). Stretches of 2 or more consecutive residues without any outlier are shown as a green connector. Residues present in the sample, but not in the model, are shown in grey.

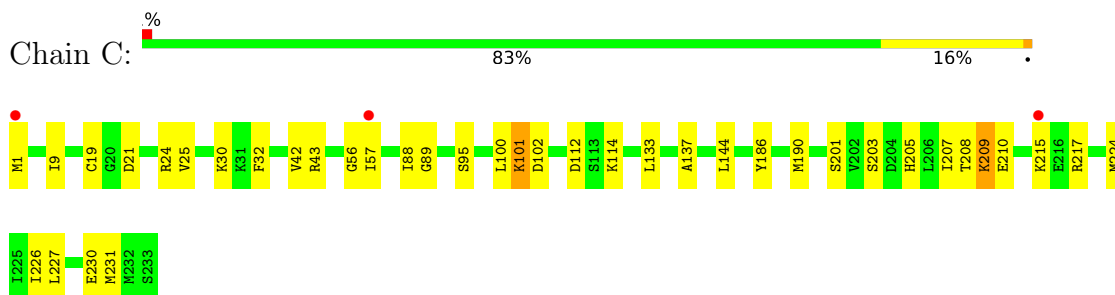
- Molecule 1: Purine nucleoside phosphorylase DeoD-type



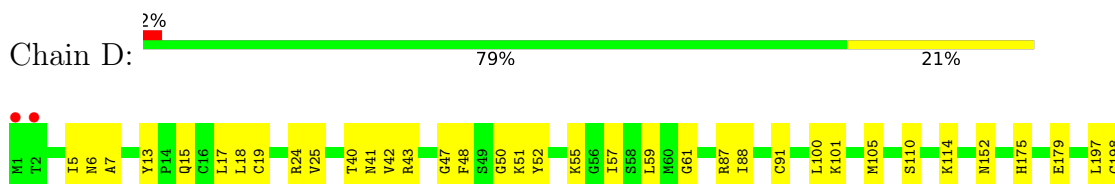
- Molecule 1: Purine nucleoside phosphorylase DeoD-type

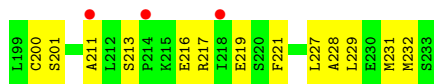


- Molecule 1: Purine nucleoside phosphorylase DeoD-type

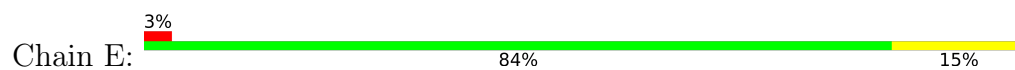


- Molecule 1: Purine nucleoside phosphorylase DeoD-type

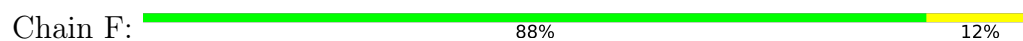




- Molecule 1: Purine nucleoside phosphorylase DeoD-type



- Molecule 1: Purine nucleoside phosphorylase DeoD-type



4 Data and refinement statistics

Property	Value	Source
Space group	P 21 21 21	Depositor
Cell constants a, b, c, α , β , γ	74.19Å 129.49Å 156.02Å 90.00° 90.00° 90.00°	Depositor
Resolution (Å)	48.77 – 2.31 48.77 – 2.31	Depositor EDS
% Data completeness (in resolution range)	99.7 (48.77-2.31) 99.7 (48.77-2.31)	Depositor EDS
R_{merge}	0.07	Depositor
R_{sym}	(Not available)	Depositor
$\langle I/\sigma(I) \rangle$ ¹	3.08 (at 2.29Å)	Xtrriage
Refinement program	PHENIX	Depositor
R, R_{free}	0.180 , 0.240 0.181 , 0.239	Depositor DCC
R_{free} test set	3312 reflections (4.90%)	wwPDB-VP
Wilson B-factor (Å ²)	28.1	Xtrriage
Anisotropy	0.034	Xtrriage
Bulk solvent k_{sol} (e/Å ³), B_{sol} (Å ²)	0.28 , 34.7	EDS
L-test for twinning ²	$\langle L \rangle = 0.46$, $\langle L^2 \rangle = 0.30$	Xtrriage
Estimated twinning fraction	No twinning to report.	Xtrriage
F_o, F_c correlation	0.93	EDS
Total number of atoms	11702	wwPDB-VP
Average B, all atoms (Å ²)	30.0	wwPDB-VP

Xtrriage's analysis on translational NCS is as follows: *The largest off-origin peak in the Patterson function is 2.72% of the height of the origin peak. No significant pseudotranslation is detected.*

¹Intensities estimated from amplitudes.

²Theoretical values of $\langle |L| \rangle$, $\langle L^2 \rangle$ for acentric reflections are 0.5, 0.333 respectively for untwinned datasets, and 0.375, 0.2 for perfectly twinned datasets.

5 Model quality [i](#)

5.1 Standard geometry [i](#)

Bond lengths and bond angles in the following residue types are not validated in this section: HPA, PO4

The Z score for a bond length (or angle) is the number of standard deviations the observed value is removed from the expected value. A bond length (or angle) with $|Z| > 5$ is considered an outlier worth inspection. RMSZ is the root-mean-square of all Z scores of the bond lengths (or angles).

Mol	Chain	Bond lengths		Bond angles	
		RMSZ	# Z >5	RMSZ	# Z >5
1	A	0.35	0/1833	0.54	0/2467
1	B	0.38	1/1850 (0.1%)	0.63	2/2490 (0.1%)
1	C	0.34	0/1839	0.55	0/2475
1	D	0.31	0/1833	0.51	0/2467
1	E	0.38	0/1833	0.58	0/2467
1	F	0.33	0/1845	0.55	0/2483
All	All	0.35	1/11033 (0.0%)	0.56	2/14849 (0.0%)

All (1) bond length outliers are listed below:

Mol	Chain	Res	Type	Atoms	Z	Observed(Å)	Ideal(Å)
1	B	205	HIS	C-N	-6.39	1.24	1.33

All (2) bond angle outliers are listed below:

Mol	Chain	Res	Type	Atoms	Z	Observed(°)	Ideal(°)
1	B	205	HIS	N-CA-C	-10.60	93.25	109.79
1	B	205	HIS	CA-C-O	6.95	130.42	121.67

There are no chirality outliers.

There are no planarity outliers.

5.2 Too-close contacts [i](#)

In the following table, the Non-H and H(model) columns list the number of non-hydrogen atoms and hydrogen atoms in the chain respectively. The H(added) column lists the number of hydrogen atoms added and optimized by MolProbity. The Clashes column lists the number of clashes within the asymmetric unit, whereas Symm-Clashes lists symmetry-related clashes.

Mol	Chain	Non-H	H(model)	H(added)	Clashes	Symm-Clashes
1	A	1802	0	1837	22	0
1	B	1813	0	1849	34	0
1	C	1805	0	1842	29	0
1	D	1802	0	1837	36	0
1	E	1802	0	1837	26	0
1	F	1808	0	1847	19	0
2	C	10	0	4	1	0
3	C	5	0	0	0	0
4	A	179	0	0	6	0
4	B	136	0	0	6	0
4	C	144	0	0	4	0
4	D	102	0	0	6	0
4	E	171	0	0	6	0
4	F	123	0	0	2	0
All	All	11702	0	11053	159	0

The all-atom clashscore is defined as the number of clashes found per 1000 atoms (including hydrogen atoms). The all-atom clashscore for this structure is 7.

The worst 5 of 159 close contacts within the same asymmetric unit are listed below, sorted by their clash magnitude.

Atom-1	Atom-2	Interatomic distance (Å)	Clash overlap (Å)
1:B:208:THR:HG23	1:B:210:GLU:H	1.34	0.90
1:E:1:MET:N	4:E:301:HOH:O	2.07	0.88
1:A:17:LEU:HD13	1:A:232:MET:HE1	1.63	0.78
1:E:87:ARG:NH1	1:E:181:GLU:OE1	2.17	0.78
1:F:17:LEU:HB2	1:F:232:MET:HE1	1.65	0.77

There are no symmetry-related clashes.

5.3 Torsion angles [i](#)

5.3.1 Protein backbone [i](#)

In the following table, the Percentiles column shows the percent Ramachandran outliers of the chain as a percentile score with respect to all X-ray entries followed by that with respect to entries of similar resolution.

The Analysed column shows the number of residues for which the backbone conformation was analysed, and the total number of residues.

Mol	Chain	Analysed	Favoured	Allowed	Outliers	Percentiles	
1	A	231/233 (99%)	226 (98%)	4 (2%)	1 (0%)	30	37
1	B	233/233 (100%)	224 (96%)	9 (4%)	0	100	100
1	C	232/233 (100%)	223 (96%)	7 (3%)	2 (1%)	14	16
1	D	231/233 (99%)	221 (96%)	10 (4%)	0	100	100
1	E	231/233 (99%)	222 (96%)	9 (4%)	0	100	100
1	F	233/233 (100%)	226 (97%)	7 (3%)	0	100	100
All	All	1391/1398 (100%)	1342 (96%)	46 (3%)	3 (0%)	43	53

All (3) Ramachandran outliers are listed below:

Mol	Chain	Res	Type
1	A	41	ASN
1	C	101	LYS
1	C	209	LYS

5.3.2 Protein sidechains [i](#)

In the following table, the Percentiles column shows the percent sidechain outliers of the chain as a percentile score with respect to all X-ray entries followed by that with respect to entries of similar resolution.

The Analysed column shows the number of residues for which the sidechain conformation was analysed, and the total number of residues.

Mol	Chain	Analysed	Rotameric	Outliers	Percentiles	
1	A	196/196 (100%)	193 (98%)	3 (2%)	57	73
1	B	198/196 (101%)	194 (98%)	4 (2%)	48	66
1	C	197/196 (100%)	197 (100%)	0	100	100
1	D	196/196 (100%)	194 (99%)	2 (1%)	68	81
1	E	196/196 (100%)	194 (99%)	2 (1%)	68	81
1	F	198/196 (101%)	198 (100%)	0	100	100
All	All	1181/1176 (100%)	1170 (99%)	11 (1%)	70	83

5 of 11 residues with a non-rotameric sidechain are listed below:

Mol	Chain	Res	Type
1	D	179	GLU
1	D	201	SER

Continued on next page...

Continued from previous page...

Mol	Chain	Res	Type
1	E	179	GLU
1	E	73	VAL
1	B	153	VAL

Sometimes sidechains can be flipped to improve hydrogen bonding and reduce clashes. All (5) such sidechains are listed below:

Mol	Chain	Res	Type
1	A	15	GLN
1	A	81	GLN
1	B	172	GLN
1	D	81	GLN
1	E	152	ASN

5.3.3 RNA [i](#)

There are no RNA molecules in this entry.

5.4 Non-standard residues in protein, DNA, RNA chains [i](#)

There are no non-standard protein/DNA/RNA residues in this entry.

5.5 Carbohydrates [i](#)

There are no oligosaccharides in this entry.

5.6 Ligand geometry [i](#)

2 ligands are modelled in this entry.

In the following table, the Counts columns list the number of bonds (or angles) for which Mogul statistics could be retrieved, the number of bonds (or angles) that are observed in the model and the number of bonds (or angles) that are defined in the Chemical Component Dictionary. The Link column lists molecule types, if any, to which the group is linked. The Z score for a bond length (or angle) is the number of standard deviations the observed value is removed from the expected value. A bond length (or angle) with $|Z| > 2$ is considered an outlier worth inspection. RMSZ is the root-mean-square of all Z scores of the bond lengths (or angles).

Mol	Type	Chain	Res	Link	Bond lengths			Bond angles		
					Counts	RMSZ	$\# Z > 2$	Counts	RMSZ	$\# Z > 2$
3	PO4	C	301	-	4,4,4	0.91	0	6,6,6	0.44	0

Mol	Type	Chain	Res	Link	Bond lengths			Bond angles		
					Counts	RMSZ	# Z > 2	Counts	RMSZ	# Z > 2
2	HPA	C	300	-	10,11,11	1.74	1 (10%)	11,15,15	2.92	8 (72%)

In the following table, the Chirals column lists the number of chiral outliers, the number of chiral centers analysed, the number of these observed in the model and the number defined in the Chemical Component Dictionary. Similar counts are reported in the Torsion and Rings columns. '-' means no outliers of that kind were identified.

Mol	Type	Chain	Res	Link	Chirals	Torsions	Rings
2	HPA	C	300	-	-	-	0/2/2/2

All (1) bond length outliers are listed below:

Mol	Chain	Res	Type	Atoms	Z	Observed(Å)	Ideal(Å)
2	C	300	HPA	C2-N3	4.75	1.38	1.30

The worst 5 of 8 bond angle outliers are listed below:

Mol	Chain	Res	Type	Atoms	Z	Observed(°)	Ideal(°)
2	C	300	HPA	C5-C6-N1	4.27	119.62	110.26
2	C	300	HPA	N1-C2-N3	-4.23	120.63	125.50
2	C	300	HPA	C2-N1-C6	-3.98	119.64	125.09
2	C	300	HPA	N7-C8-N9	-3.04	109.45	112.98
2	C	300	HPA	C2-N3-C4	2.82	120.31	113.34

There are no chirality outliers.

There are no torsion outliers.

There are no ring outliers.

1 monomer is involved in 1 short contact:

Mol	Chain	Res	Type	Clashes	Symm-Clashes
2	C	300	HPA	1	0

5.7 Other polymers [i](#)

There are no such residues in this entry.

5.8 Polymer linkage issues [i](#)

There are no chain breaks in this entry.

6 Fit of model and data [i](#)

6.1 Protein, DNA and RNA chains [i](#)

In the following table, the column labelled ‘#RSRZ > 2’ contains the number (and percentage) of RSRZ outliers, followed by percent RSRZ outliers for the chain as percentile scores relative to all X-ray entries and entries of similar resolution. The OWAB column contains the minimum, median, 95th percentile and maximum values of the occupancy-weighted average B-factor per residue. The column labelled ‘Q < 0.9’ lists the number of (and percentage) of residues with an average occupancy less than 0.9.

Mol	Chain	Analysed	<RSRZ>	#RSRZ>2	OWAB(Å ²)	Q<0.9
1	A	233/233 (100%)	-0.17	1 (0%) 88 89	17, 28, 44, 59	0
1	B	233/233 (100%)	-0.00	6 (2%) 57 60	15, 29, 59, 78	2 (0%)
1	C	233/233 (100%)	-0.15	3 (1%) 75 76	15, 27, 47, 57	1 (0%)
1	D	233/233 (100%)	0.16	5 (2%) 63 66	17, 37, 57, 79	0
1	E	233/233 (100%)	-0.22	6 (2%) 57 60	14, 24, 47, 66	0
1	F	233/233 (100%)	-0.13	1 (0%) 88 89	15, 29, 45, 60	2 (0%)
All	All	1398/1398 (100%)	-0.09	22 (1%) 70 72	14, 28, 50, 79	5 (0%)

The worst 5 of 22 RSRZ outliers are listed below:

Mol	Chain	Res	Type	RSRZ
1	D	214	PRO	5.1
1	E	214	PRO	4.3
1	C	215	LYS	3.4
1	B	208	THR	3.2
1	B	205	HIS	3.1

6.2 Non-standard residues in protein, DNA, RNA chains [i](#)

There are no non-standard protein/DNA/RNA residues in this entry.

6.3 Carbohydrates [i](#)

There are no oligosaccharides in this entry.

6.4 Ligands [i](#)

In the following table, the Atoms column lists the number of modelled atoms in the group and the number defined in the chemical component dictionary. The B-factors column lists the minimum, median, 95th percentile and maximum values of B factors of atoms in the group. The column labelled 'Q< 0.9' lists the number of atoms with occupancy less than 0.9.

Mol	Type	Chain	Res	Atoms	RSCC	RSR	B-factors(Å ²)	Q<0.9
3	PO4	C	301	5/5	0.93	0.12	29,29,33,39	0
2	HPA	C	300	10/10	0.94	0.09	27,30,35,35	0

6.5 Other polymers [i](#)

There are no such residues in this entry.