



Full wwPDB X-ray Structure Validation Report ⓘ

Mar 5, 2026 – 07:22 PM UTC

PDB ID : 7MX7 / pdb_00007mx7
Title : PRMT5:MEP50 complexed with inhibitor PF-06939999
Authors : McTigue, M.; Deng, Y.L.; Liu, W.; Brooun, A.
Deposited on : 2021-05-18
Resolution : 2.49 Å(reported)

This is a Full wwPDB X-ray Structure Validation Report for a publicly released PDB entry.

We welcome your comments at validation@mail.wwpdb.org

A user guide is available at

<https://www.wwpdb.org/validation/2017/XrayValidationReportHelp>

with specific help available everywhere you see the ⓘ symbol.

The types of validation reports are described at

<http://www.wwpdb.org/validation/2017/FAQs#types>.

The following versions of software and data (see [references ⓘ](#)) were used in the production of this report:

MolProbity : 4-5-2 with Phenix2.0
Mogul : 2022.3.0, CSD as543be (2022)
Xtriage (Phenix) : 2.0
EDS : 3.0
Buster-report : wwPDB partial adaption of 1.1.7 (2018)
Percentile statistics : 20250101.v01 (using entries in the PDB archive January 1st 2025)
CCP4 : 9.0.010 (Gargrove)
Density-Fitness : 1.0.12
Ideal geometry (proteins) : Engh & Huber (2001)
Ideal geometry (DNA, RNA) : Parkinson et al. (1996)
Validation Pipeline (wwPDB-VP) : 2.49

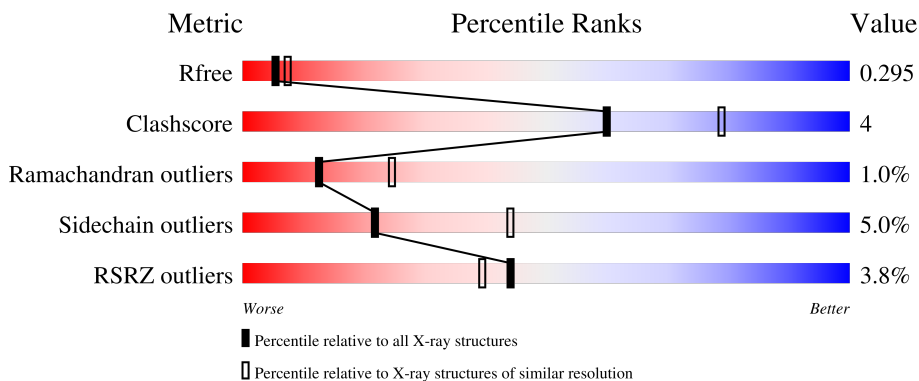
1 Overall quality at a glance

The following experimental techniques were used to determine the structure:

X-RAY DIFFRACTION

The reported resolution of this entry is 2.49 Å.

Percentile scores (ranging between 0-100) for global validation metrics of the entry are shown in the following graphic. The table shows the number of entries on which the scores are based.



Metric	Whole archive (#Entries)	Similar resolution (#Entries, resolution range(Å))
R_{free}	180053	5829 (2.50-2.50)
Clashscore	190562	6492 (2.50-2.50)
Ramachandran outliers	187476	6378 (2.50-2.50)
Sidechain outliers	187428	6380 (2.50-2.50)
RSRZ outliers	180081	5833 (2.50-2.50)

The table below summarises the geometric issues observed across the polymeric chains and their fit to the electron density. The red, orange, yellow and green segments of the lower bar indicate the fraction of residues that contain outliers for ≥ 3 , 2, 1 and 0 types of geometric quality criteria respectively. A grey segment represents the fraction of residues that are not modelled. The numeric value for each fraction is indicated below the corresponding segment, with a dot representing fractions $\leq 5\%$. The upper red bar (where present) indicates the fraction of residues that have poor fit to the electron density. The numeric value is given above the bar.

Mol	Chain	Length	Quality of chain
1	A	637	
2	B	366	

2 Entry composition [i](#)

There are 4 unique types of molecules in this entry. The entry contains 7629 atoms, of which 0 are hydrogens and 0 are deuteriums.

In the tables below, the ZeroOcc column contains the number of atoms modelled with zero occupancy, the AltConf column contains the number of residues with at least one atom in alternate conformation and the Trace column contains the number of residues modelled with at most 2 atoms.

- Molecule 1 is a protein called Protein arginine N-methyltransferase 5.

Mol	Chain	Residues	Atoms					ZeroOcc	AltConf	Trace
			Total	C	N	O	S			
1	A	621	5031	3217	865	924	25	0	1	0

- Molecule 2 is a protein called Methylosome protein 50.

Mol	Chain	Residues	Atoms					ZeroOcc	AltConf	Trace
			Total	C	N	O	S			
2	B	307	2317	1454	396	453	14	0	0	0

There are 25 discrepancies between the modelled and reference sequences:

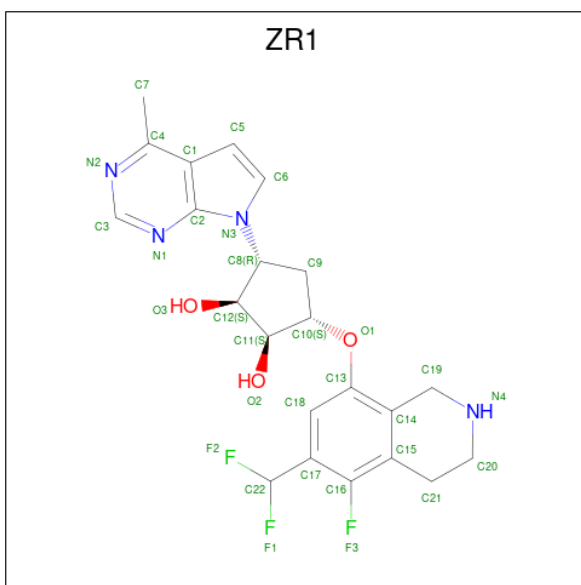
Chain	Residue	Modelled	Actual	Comment	Reference
B	-23	MET	-	expression tag	UNP Q9BQA1
B	-22	ALA	-	expression tag	UNP Q9BQA1
B	-21	SER	-	expression tag	UNP Q9BQA1
B	-20	HIS	-	expression tag	UNP Q9BQA1
B	-19	HIS	-	expression tag	UNP Q9BQA1
B	-18	HIS	-	expression tag	UNP Q9BQA1
B	-17	HIS	-	expression tag	UNP Q9BQA1
B	-16	HIS	-	expression tag	UNP Q9BQA1
B	-15	HIS	-	expression tag	UNP Q9BQA1
B	-14	ASP	-	expression tag	UNP Q9BQA1
B	-13	TYR	-	expression tag	UNP Q9BQA1
B	-12	ASP	-	expression tag	UNP Q9BQA1
B	-11	GLY	-	expression tag	UNP Q9BQA1
B	-10	ALA	-	expression tag	UNP Q9BQA1
B	-9	THR	-	expression tag	UNP Q9BQA1
B	-8	THR	-	expression tag	UNP Q9BQA1
B	-7	GLU	-	expression tag	UNP Q9BQA1
B	-6	ASN	-	expression tag	UNP Q9BQA1
B	-5	LEU	-	expression tag	UNP Q9BQA1
B	-4	TYR	-	expression tag	UNP Q9BQA1

Continued on next page...

Continued from previous page...

Chain	Residue	Modelled	Actual	Comment	Reference
B	-3	PHE	-	expression tag	UNP Q9BQA1
B	-2	GLN	-	expression tag	UNP Q9BQA1
B	-1	GLY	-	expression tag	UNP Q9BQA1
B	0	SER	-	expression tag	UNP Q9BQA1
B	1	LEU	-	expression tag	UNP Q9BQA1

- Molecule 3 is (1S,2S,3S,5R)-3-{{6-(difluoromethyl)-5-fluoro-1,2,3,4-tetrahydroisoquinolin-8-yl}oxy}-5-(4-methyl-7H-pyrrolo[2,3-d]pyrimidin-7-yl)cyclopentane-1,2-diol (CCD ID: ZR1) (formula: C₂₂H₂₃F₃N₄O₃) (labeled as "Ligand of Interest" by depositor).



Mol	Chain	Residues	Atoms				ZeroOcc	AltConf	
			Total	C	F	N			O
3	A	1	32	22	3	4	3	0	0

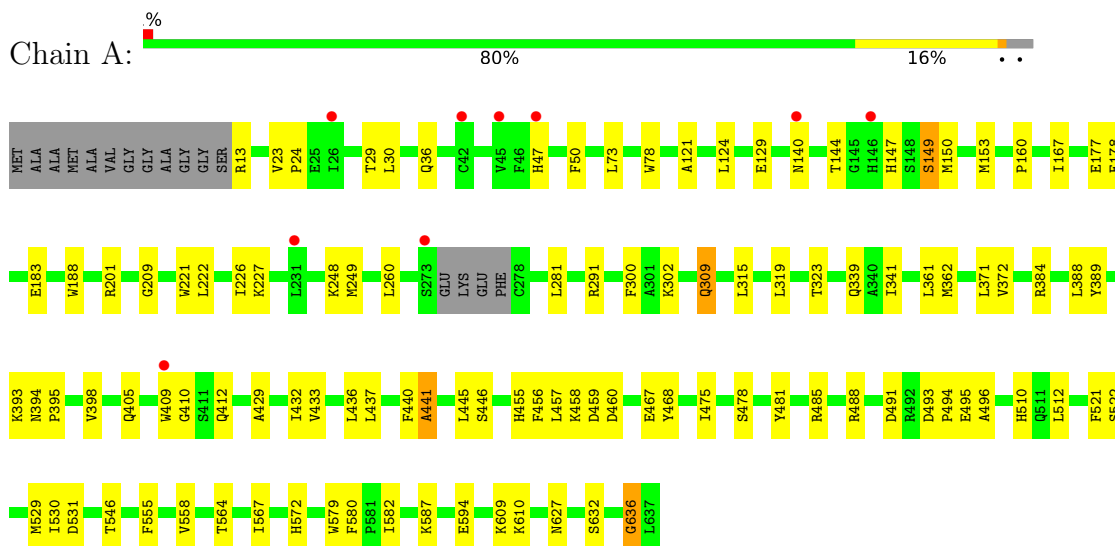
- Molecule 4 is water.

Mol	Chain	Residues	Atoms		ZeroOcc	AltConf
			Total	O		
4	A	197	197	197	0	0
4	B	52	52	52	0	0

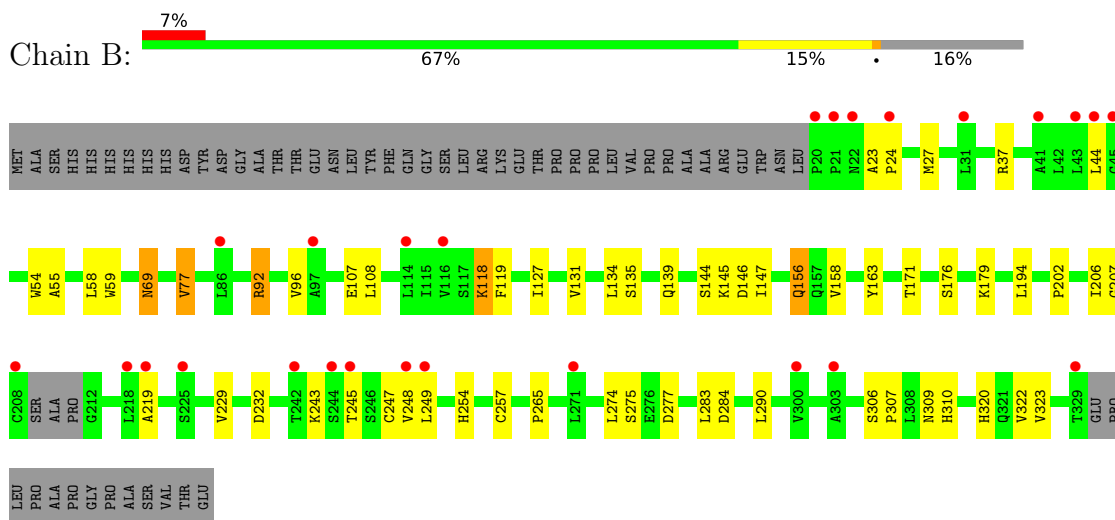
3 Residue-property plots [i](#)

These plots are drawn for all protein, RNA, DNA and oligosaccharide chains in the entry. The first graphic for a chain summarises the proportions of the various outlier classes displayed in the second graphic. The second graphic shows the sequence view annotated by issues in geometry and electron density. Residues are color-coded according to the number of geometric quality criteria for which they contain at least one outlier: green = 0, yellow = 1, orange = 2 and red = 3 or more. A red dot above a residue indicates a poor fit to the electron density ($RSRZ > 2$). Stretches of 2 or more consecutive residues without any outlier are shown as a green connector. Residues present in the sample, but not in the model, are shown in grey.

- Molecule 1: Protein arginine N-methyltransferase 5



- Molecule 2: Methylosome protein 50



4 Data and refinement statistics

Property	Value	Source
Space group	I 2 2 2	Depositor
Cell constants a, b, c, α , β , γ	101.60Å 137.48Å 178.26Å 90.00° 90.00° 90.00°	Depositor
Resolution (Å)	89.13 – 2.49 89.13 – 2.49	Depositor EDS
% Data completeness (in resolution range)	99.9 (89.13-2.49) 99.9 (89.13-2.49)	Depositor EDS
R_{merge}	0.06	Depositor
R_{sym}	(Not available)	Depositor
$\langle I/\sigma(I) \rangle$ ¹	2.55 (at 2.48Å)	Xtrriage
Refinement program	BUSTER 2.11.7	Depositor
R, R_{free}	0.222 , 0.279 0.225 , 0.295	Depositor DCC
R_{free} test set	2198 reflections (4.99%)	wwPDB-VP
Wilson B-factor (Å ²)	52.4	Xtrriage
Anisotropy	1.044	Xtrriage
Bulk solvent k_{sol} (e/Å ³), B_{sol} (Å ²)	0.35 , 71.6	EDS
L-test for twinning ²	$\langle L \rangle = 0.48$, $\langle L^2 \rangle = 0.32$	Xtrriage
Estimated twinning fraction	No twinning to report.	Xtrriage
F_o, F_c correlation	0.95	EDS
Total number of atoms	7629	wwPDB-VP
Average B, all atoms (Å ²)	70.0	wwPDB-VP

Xtrriage's analysis on translational NCS is as follows: *The largest off-origin peak in the Patterson function is 2.90% of the height of the origin peak. No significant pseudotranslation is detected.*

¹Intensities estimated from amplitudes.

²Theoretical values of $\langle |L| \rangle$, $\langle L^2 \rangle$ for acentric reflections are 0.5, 0.333 respectively for untwinned datasets, and 0.375, 0.2 for perfectly twinned datasets.

5 Model quality [i](#)

5.1 Standard geometry [i](#)

Bond lengths and bond angles in the following residue types are not validated in this section: ZR1

The Z score for a bond length (or angle) is the number of standard deviations the observed value is removed from the expected value. A bond length (or angle) with $|Z| > 5$ is considered an outlier worth inspection. RMSZ is the root-mean-square of all Z scores of the bond lengths (or angles).

Mol	Chain	Bond lengths		Bond angles	
		RMSZ	# Z >5	RMSZ	# Z >5
1	A	0.81	1/5171 (0.0%)	1.17	17/7034 (0.2%)
2	B	0.81	1/2372 (0.0%)	1.20	11/3239 (0.3%)
All	All	0.81	2/7543 (0.0%)	1.18	28/10273 (0.3%)

All (2) bond length outliers are listed below:

Mol	Chain	Res	Type	Atoms	Z	Observed(Å)	Ideal(Å)
1	A	627	ASN	CA-C	5.41	1.59	1.52
2	B	55	ALA	CA-C	5.05	1.60	1.53

All (28) bond angle outliers are listed below:

Mol	Chain	Res	Type	Atoms	Z	Observed(°)	Ideal(°)
2	B	232	ASP	CA-CB-CG	6.41	119.01	112.60
1	A	456	PHE	CA-CB-CG	6.16	119.96	113.80
2	B	69	ASN	CA-C-N	6.15	129.36	120.38
2	B	69	ASN	C-N-CA	6.15	129.36	120.38
2	B	245	THR	CA-C-N	5.83	131.78	121.80
2	B	245	THR	C-N-CA	5.83	131.78	121.80
2	B	119	PHE	CA-CB-CG	5.68	119.48	113.80
2	B	96	VAL	N-CA-C	5.54	115.87	108.11
2	B	27	MET	CA-C-N	5.45	130.06	121.56
2	B	27	MET	C-N-CA	5.45	130.06	121.56
1	A	580	PHE	CA-CB-CG	5.35	119.15	113.80
2	B	277	ASP	CA-CB-CG	5.34	117.94	112.60
1	A	478	SER	CA-C-N	5.33	127.86	120.29
1	A	478	SER	C-N-CA	5.33	127.86	120.29
1	A	636	GLY	N-CA-C	5.32	118.78	111.54
1	A	529	MET	CA-C-N	5.28	131.47	121.97
1	A	529	MET	C-N-CA	5.28	131.47	121.97

Continued on next page...

Continued from previous page...

Mol	Chain	Res	Type	Atoms	Z	Observed(°)	Ideal(°)
1	A	440	PHE	CA-C-N	5.24	131.55	121.54
1	A	440	PHE	C-N-CA	5.24	131.55	121.54
1	A	409	TRP	N-CA-C	5.22	116.66	111.07
1	A	300	PHE	CA-CB-CG	5.20	119.00	113.80
1	A	410	GLY	CA-C-N	5.16	127.92	120.38
1	A	410	GLY	C-N-CA	5.16	127.92	120.38
1	A	341	ILE	CA-C-N	5.09	127.86	120.79
1	A	341	ILE	C-N-CA	5.09	127.86	120.79
1	A	209	GLY	CA-C-N	5.06	127.02	120.44
1	A	209	GLY	C-N-CA	5.06	127.02	120.44
2	B	163	TYR	N-CA-C	5.05	116.86	108.02

There are no chirality outliers.

There are no planarity outliers.

5.2 Too-close contacts [i](#)

In the following table, the Non-H and H(model) columns list the number of non-hydrogen atoms and hydrogen atoms in the chain respectively. The H(added) column lists the number of hydrogen atoms added and optimized by MolProbity. The Clashes column lists the number of clashes within the asymmetric unit, whereas Symm-Clashes lists symmetry-related clashes.

Mol	Chain	Non-H	H(model)	H(added)	Clashes	Symm-Clashes
1	A	5031	0	4925	43	0
2	B	2317	0	2233	22	0
3	A	32	0	0	1	0
4	A	197	0	0	2	0
4	B	52	0	0	0	0
All	All	7629	0	7158	63	0

The all-atom clashscore is defined as the number of clashes found per 1000 atoms (including hydrogen atoms). The all-atom clashscore for this structure is 4.

All (63) close contacts within the same asymmetric unit are listed below, sorted by their clash magnitude.

Atom-1	Atom-2	Interatomic distance (Å)	Clash overlap (Å)
1:A:147:HIS:HD2	1:A:201:ARG:HH12	1.09	0.92
1:A:147:HIS:CD2	1:A:201:ARG:HH12	1.89	0.90
1:A:319:LEU:HD22	1:A:323:THR:HG21	1.67	0.77
2:B:23:ALA:HB1	2:B:24:PRO:HD2	1.74	0.69

Continued on next page...

Continued from previous page...

Atom-1	Atom-2	Interatomic distance (Å)	Clash overlap (Å)
1:A:144:THR:O	1:A:147:HIS:HE1	1.78	0.66
2:B:194:LEU:HB2	2:B:206:ILE:HD11	1.77	0.65
2:B:219:ALA:HB3	2:B:229:VAL:HG23	1.80	0.64
1:A:441:ALA:HB2	1:A:555:PHE:HB2	1.81	0.61
2:B:127:ILE:HB	2:B:145:LYS:HD2	1.84	0.59
2:B:107:GLU:HB2	2:B:118:LYS:HD3	1.84	0.59
1:A:495:GLU:HB3	1:A:587:LYS:HE2	1.84	0.59
2:B:254:HIS:CD2	2:B:275:SER:HB2	2.41	0.56
2:B:176:SER:HB3	2:B:179:LYS:O	2.06	0.55
2:B:219:ALA:HB3	2:B:229:VAL:CG2	2.37	0.55
2:B:284:ASP:HB3	2:B:290:LEU:HD11	1.89	0.55
1:A:24:PRO:HA	2:B:54:TRP:HB2	1.88	0.54
1:A:567:ILE:HG21	1:A:579:TRP:HB2	1.90	0.53
2:B:58:LEU:HB2	2:B:77:VAL:HG12	1.91	0.52
1:A:488:ARG:HD2	1:A:494:PRO:HA	1.90	0.52
1:A:47:HIS:HB3	1:A:50:PHE:HB2	1.91	0.51
2:B:322:VAL:HG12	2:B:322:VAL:O	2.11	0.51
2:B:44:LEU:HB2	2:B:59:TRP:HB2	1.92	0.51
1:A:140:ASN:HB3	4:A:974:HOH:O	2.11	0.50
1:A:610:LYS:HD3	1:A:636:GLY:HA2	1.93	0.50
1:A:160:PRO:HD2	4:A:899:HOH:O	2.11	0.50
1:A:144:THR:O	1:A:147:HIS:CE1	2.62	0.49
2:B:265:PRO:HB2	2:B:310:HIS:CE1	2.46	0.49
1:A:558:VAL:HA	1:A:564:THR:HG22	1.95	0.49
2:B:306:SER:HB3	2:B:309:ASN:O	2.13	0.49
1:A:222:LEU:HB3	1:A:510:HIS:HB2	1.94	0.49
1:A:468:TYR:CE1	1:A:521:PHE:HB2	2.48	0.47
1:A:467:GLU:HG3	1:A:522:SER:HB3	1.96	0.47
2:B:37:ARG:O	2:B:307:PRO:HG3	2.14	0.47
1:A:372:VAL:HG13	1:A:388:LEU:HD13	1.96	0.47
1:A:167:ILE:HB	2:B:202:PRO:HD2	1.97	0.46
2:B:156:GLN:HB3	2:B:158:VAL:HG22	1.98	0.46
1:A:394:ASN:O	1:A:398:VAL:HG23	2.17	0.45
1:A:493:ASP:HB3	1:A:496:ALA:HB2	1.99	0.45
1:A:23:VAL:HG22	1:A:29:THR:HG21	1.99	0.45
1:A:73:LEU:HB2	1:A:78:TRP:CE2	2.52	0.45
1:A:395:PRO:HA	1:A:398:VAL:HB	1.99	0.44
1:A:393:LYS:HE3	3:A:701:ZR1:O3	2.18	0.44
2:B:92:ARG:HG3	2:B:108:LEU:HB2	1.99	0.43
1:A:129:GLU:HA	1:A:188:TRP:CD1	2.54	0.43
1:A:221:TRP:HB3	1:A:226:ILE:HD11	2.00	0.43

Continued on next page...

Continued from previous page...

Atom-1	Atom-2	Interatomic distance (Å)	Clash overlap (Å)
1:A:458:LYS:C	1:A:460:ASP:H	2.27	0.43
2:B:144:SER:HB3	2:B:146:ASP:OD1	2.19	0.43
1:A:567:ILE:HA	1:A:572:HIS:CD2	2.54	0.42
1:A:149:SER:H	1:A:201:ARG:NH1	2.18	0.42
1:A:124:LEU:HB2	1:A:153:MET:HE1	2.00	0.42
1:A:362:MET:SD	1:A:429:ALA:HB2	2.60	0.42
1:A:436:LEU:O	1:A:446:SER:HB2	2.20	0.42
1:A:362:MET:HG2	1:A:389:TYR:HB2	2.02	0.42
2:B:134:LEU:HD12	2:B:139:GLN:HB3	2.02	0.41
1:A:512:LEU:HD13	1:A:546:THR:HG21	2.03	0.41
1:A:315:LEU:HD23	1:A:445:LEU:HD12	2.03	0.41
1:A:432:ILE:HG12	1:A:457:LEU:HD13	2.02	0.41
1:A:481:TYR:CE2	1:A:485:ARG:HD2	2.56	0.41
2:B:134:LEU:HD12	2:B:139:GLN:CB	2.50	0.41
1:A:121:ALA:HA	1:A:150:MET:O	2.20	0.40
1:A:309:GLN:HE21	1:A:309:GLN:HB2	1.72	0.40
1:A:437:LEU:HD21	1:A:468:TYR:CD2	2.57	0.40
1:A:371:LEU:HD13	1:A:433:VAL:HG12	2.04	0.40

There are no symmetry-related clashes.

5.3 Torsion angles [i](#)

5.3.1 Protein backbone [i](#)

In the following table, the Percentiles column shows the percent Ramachandran outliers of the chain as a percentile score with respect to all X-ray entries followed by that with respect to entries of similar resolution.

The Analysed column shows the number of residues for which the backbone conformation was analysed, and the total number of residues.

Mol	Chain	Analysed	Favoured	Allowed	Outliers	Percentiles	
1	A	618/637 (97%)	585 (95%)	29 (5%)	4 (1%)	21	38
2	B	303/366 (83%)	279 (92%)	19 (6%)	5 (2%)	7	13
All	All	921/1003 (92%)	864 (94%)	48 (5%)	9 (1%)	12	24

All (9) Ramachandran outliers are listed below:

Mol	Chain	Res	Type
1	A	531	ASP
2	B	147	ILE
2	B	243	LYS
2	B	323	VAL
1	A	302	LYS
1	A	441	ALA
1	A	459	ASP
2	B	69	ASN
2	B	207	GLY

5.3.2 Protein sidechains [i](#)

In the following table, the Percentiles column shows the percent sidechain outliers of the chain as a percentile score with respect to all X-ray entries followed by that with respect to entries of similar resolution.

The Analysed column shows the number of residues for which the sidechain conformation was analysed, and the total number of residues.

Mol	Chain	Analysed	Rotameric	Outliers	Percentiles	
1	A	555/562 (99%)	528 (95%)	27 (5%)	22	45
2	B	260/310 (84%)	246 (95%)	14 (5%)	20	41
All	All	815/872 (94%)	774 (95%)	41 (5%)	22	44

All (41) residues with a non-rotameric sidechain are listed below:

Mol	Chain	Res	Type
1	A	13	ARG
1	A	30	LEU
1	A	36	GLN
1	A	149	SER
1	A	177	GLU
1	A	178	GLU
1	A	183	GLU
1	A	227	LYS
1	A	248	LYS
1	A	249	MET
1	A	260	LEU
1	A	281	LEU
1	A	291	ARG
1	A	309	GLN
1	A	339	GLN

Continued on next page...

Continued from previous page...

Mol	Chain	Res	Type
1	A	361	LEU
1	A	384	ARG
1	A	405	GLN
1	A	412	GLN
1	A	455	HIS
1	A	475	ILE
1	A	491	ASP
1	A	530	ILE
1	A	582	ILE
1	A	594	GLU
1	A	609	LYS
1	A	632	SER
2	B	77	VAL
2	B	92	ARG
2	B	118	LYS
2	B	131	VAL
2	B	135	SER
2	B	156	GLN
2	B	171	THR
2	B	247	CYS
2	B	248	VAL
2	B	249	LEU
2	B	257	CYS
2	B	274	LEU
2	B	283	LEU
2	B	320	HIS

Sometimes sidechains can be flipped to improve hydrogen bonding and reduce clashes. All (18) such sidechains are listed below:

Mol	Chain	Res	Type
1	A	56	GLN
1	A	102	ASN
1	A	147	HIS
1	A	263	GLN
1	A	282	GLN
1	A	295	ASN
1	A	309	GLN
1	A	339	GLN
1	A	381	GLN
1	A	394	ASN
1	A	396	ASN
1	A	405	GLN

Continued on next page...

Continued from previous page...

Mol	Chain	Res	Type
2	B	69	ASN
2	B	139	GLN
2	B	254	HIS
2	B	256	GLN
2	B	294	GLN
2	B	310	HIS

5.3.3 RNA [i](#)

There are no RNA molecules in this entry.

5.4 Non-standard residues in protein, DNA, RNA chains [i](#)

There are no non-standard protein/DNA/RNA residues in this entry.

5.5 Carbohydrates [i](#)

There are no oligosaccharides in this entry.

5.6 Ligand geometry [i](#)

1 ligand is modelled in this entry.

In the following table, the Counts columns list the number of bonds (or angles) for which Mogul statistics could be retrieved, the number of bonds (or angles) that are observed in the model and the number of bonds (or angles) that are defined in the Chemical Component Dictionary. The Link column lists molecule types, if any, to which the group is linked. The Z score for a bond length (or angle) is the number of standard deviations the observed value is removed from the expected value. A bond length (or angle) with $|Z| > 2$ is considered an outlier worth inspection. RMSZ is the root-mean-square of all Z scores of the bond lengths (or angles).

Mol	Type	Chain	Res	Link	Bond lengths			Bond angles		
					Counts	RMSZ	# Z > 2	Counts	RMSZ	# Z > 2
3	ZR1	A	701	-	35,36,36	1.19	2 (5%)	47,54,54	0.91	3 (6%)

In the following table, the Chirals column lists the number of chiral outliers, the number of chiral centers analysed, the number of these observed in the model and the number defined in the Chemical Component Dictionary. Similar counts are reported in the Torsion and Rings columns. '-' means no outliers of that kind were identified.

Mol	Type	Chain	Res	Link	Chirals	Torsions	Rings
3	ZR1	A	701	-	-	5/12/35/35	0/5/5/5

All (2) bond length outliers are listed below:

Mol	Chain	Res	Type	Atoms	Z	Observed(Å)	Ideal(Å)
3	A	701	ZR1	C19-N4	6.09	1.54	1.46
3	A	701	ZR1	C17-C16	3.01	1.41	1.38

All (3) bond angle outliers are listed below:

Mol	Chain	Res	Type	Atoms	Z	Observed(°)	Ideal(°)
3	A	701	ZR1	F3-C16-C17	-3.26	116.44	119.67
3	A	701	ZR1	C13-O1-C10	2.22	123.79	119.00
3	A	701	ZR1	C11-C12-C8	2.18	105.80	102.46

There are no chirality outliers.

All (5) torsion outliers are listed below:

Mol	Chain	Res	Type	Atoms
3	A	701	ZR1	C9-C10-O1-C13
3	A	701	ZR1	C18-C17-C22-F1
3	A	701	ZR1	C12-C8-N3-C6
3	A	701	ZR1	C9-C8-N3-C2
3	A	701	ZR1	C12-C8-N3-C2

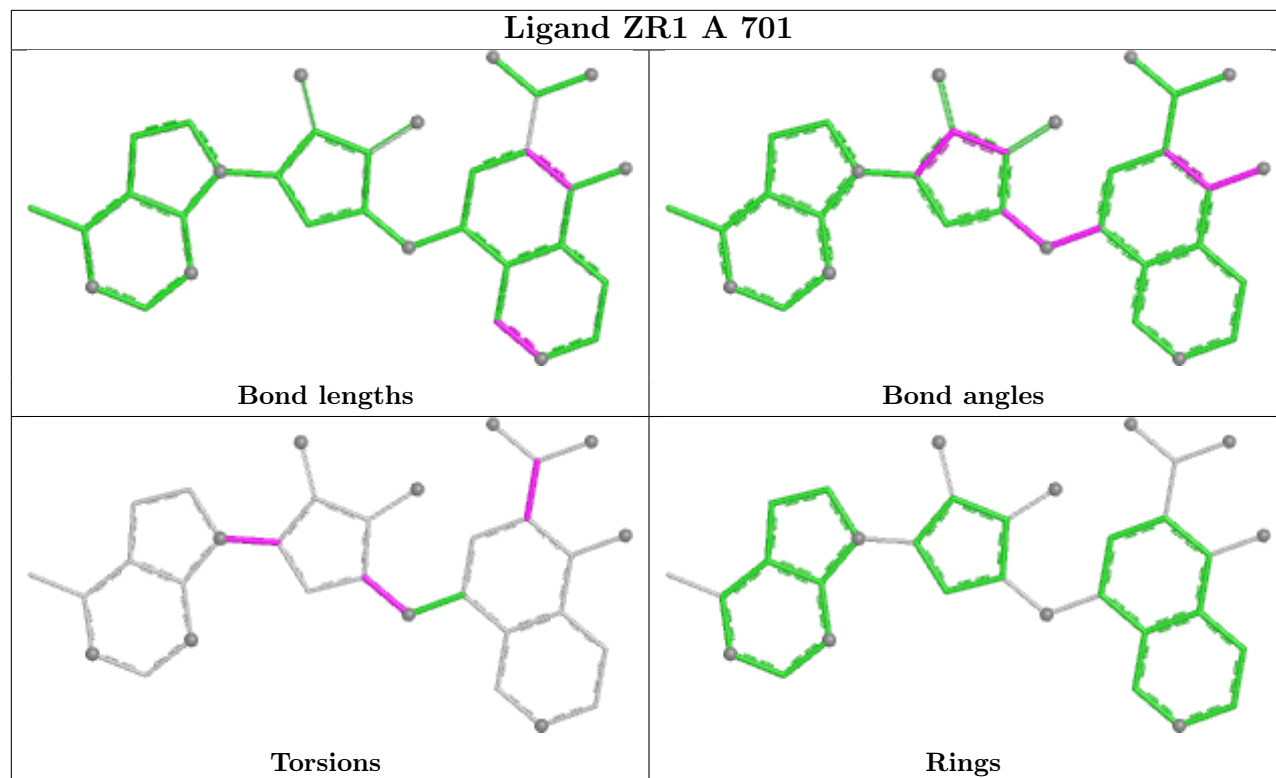
There are no ring outliers.

1 monomer is involved in 1 short contact:

Mol	Chain	Res	Type	Clashes	Symm-Clashes
3	A	701	ZR1	1	0

The following is a two-dimensional graphical depiction of Mogul quality analysis of bond lengths, bond angles, torsion angles, and ring geometry for all instances of the Ligand of Interest. In addition, ligands with molecular weight > 250 and outliers as shown on the validation Tables will also be included. For torsion angles, if less than 5% of the Mogul distribution of torsion angles is within 10 degrees of the torsion angle in question, then that torsion angle is considered an outlier. Any bond that is central to one or more torsion angles identified as an outlier by Mogul will be highlighted in the graph. For rings, the root-mean-square deviation (RMSD) between the ring in question and similar rings identified by Mogul is calculated over all ring torsion angles. If the average RMSD is greater than 60 degrees and the minimal RMSD between the ring in question and any Mogul-identified rings is also greater than 60 degrees, then that ring is considered an outlier. The outliers are highlighted in purple. The color gray indicates Mogul did not find sufficient

equivalents in the CSD to analyse the geometry.



5.7 Other polymers [i](#)

There are no such residues in this entry.

5.8 Polymer linkage issues [i](#)

There are no chain breaks in this entry.

6 Fit of model and data

6.1 Protein, DNA and RNA chains

In the following table, the column labelled ‘#RSRZ > 2’ contains the number (and percentage) of RSRZ outliers, followed by percent RSRZ outliers for the chain as percentile scores relative to all X-ray entries and entries of similar resolution. The OWAB column contains the minimum, median, 95th percentile and maximum values of the occupancy-weighted average B-factor per residue. The column labelled ‘Q < 0.9’ lists the number of (and percentage) of residues with an average occupancy less than 0.9.

Mol	Chain	Analysed	<RSRZ>	#RSRZ>2	OWAB(Å ²)	Q<0.9
1	A	621/637 (97%)	0.58	9 (1%) 73 70	25, 63, 97, 117	1 (0%)
2	B	307/366 (83%)	0.98	26 (8%) 16 14	59, 77, 105, 131	0
All	All	928/1003 (92%)	0.71	35 (3%) 44 39	25, 69, 101, 131	1 (0%)

All (35) RSRZ outliers are listed below:

Mol	Chain	Res	Type	RSRZ
2	B	245	THR	3.6
2	B	218	LEU	3.6
1	A	273	SER	3.4
2	B	208	CYS	3.3
2	B	22	ASN	3.2
2	B	329	THR	3.2
2	B	248	VAL	3.1
2	B	225	SER	3.1
1	A	45	VAL	3.0
2	B	20	PRO	2.9
2	B	97	ALA	2.5
2	B	300	VAL	2.4
2	B	242	THR	2.4
2	B	44	LEU	2.4
1	A	140	ASN	2.4
2	B	31	LEU	2.3
2	B	41	ALA	2.3
2	B	86	LEU	2.2
2	B	249	LEU	2.2
2	B	43	LEU	2.2
1	A	409	TRP	2.2
1	A	47	HIS	2.2
1	A	146	HIS	2.1
2	B	244	SER	2.1

Continued on next page...

Continued from previous page...

Mol	Chain	Res	Type	RSRZ
2	B	303	ALA	2.1
1	A	42	CYS	2.1
2	B	219	ALA	2.1
1	A	231	LEU	2.1
2	B	271	LEU	2.1
2	B	21	PRO	2.1
2	B	116	VAL	2.0
2	B	114	LEU	2.0
2	B	45	GLY	2.0
1	A	26	ILE	2.0
2	B	24	PRO	2.0

6.2 Non-standard residues in protein, DNA, RNA chains [i](#)

There are no non-standard protein/DNA/RNA residues in this entry.

6.3 Carbohydrates [i](#)

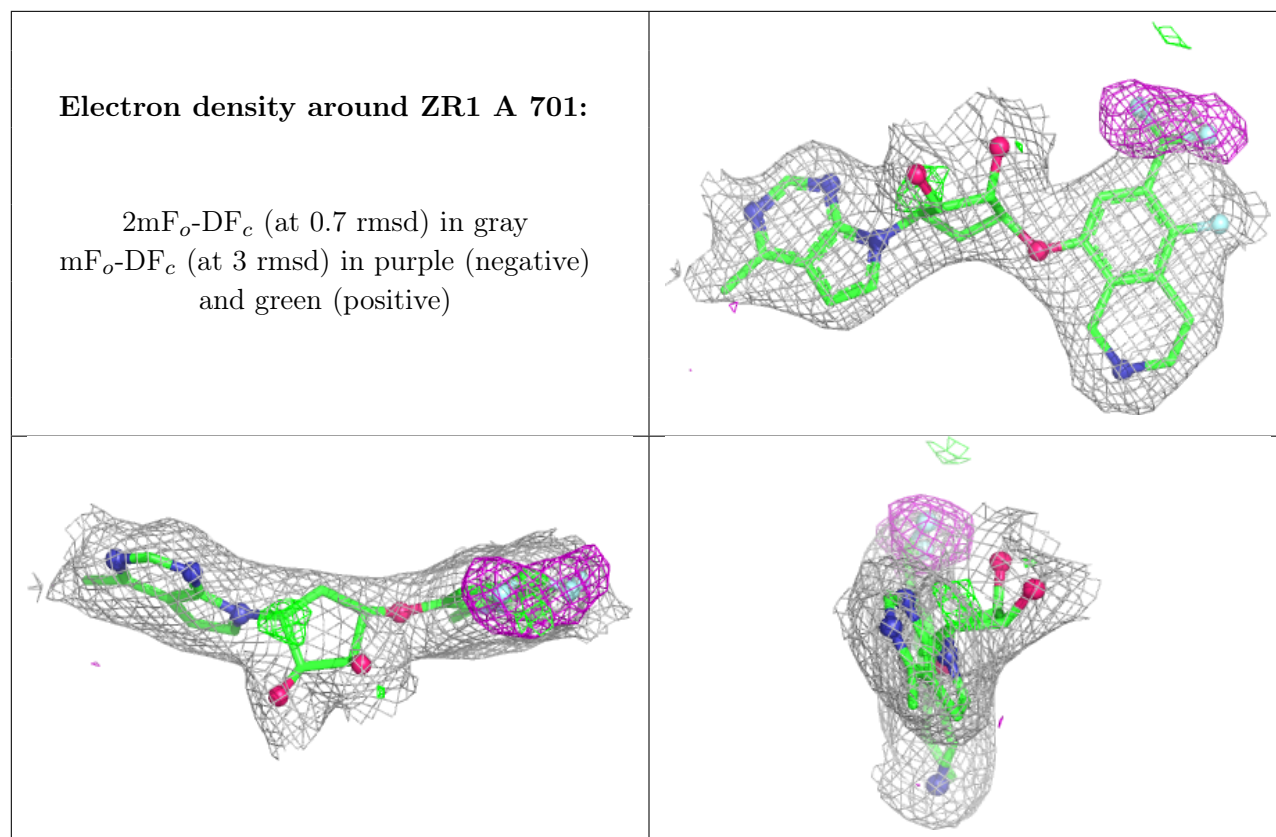
There are no oligosaccharides in this entry.

6.4 Ligands [i](#)

In the following table, the Atoms column lists the number of modelled atoms in the group and the number defined in the chemical component dictionary. The B-factors column lists the minimum, median, 95th percentile and maximum values of B factors of atoms in the group. The column labelled 'Q< 0.9' lists the number of atoms with occupancy less than 0.9.

Mol	Type	Chain	Res	Atoms	RSCC	RSR	B-factors(Å ²)	Q<0.9
3	ZR1	A	701	32/32	0.88	0.12	47,52,62,63	0

The following is a graphical depiction of the model fit to experimental electron density of all instances of the Ligand of Interest. In addition, ligands with molecular weight > 250 and outliers as shown on the geometry validation Tables will also be included. Each fit is shown from different orientation to approximate a three-dimensional view.



6.5 Other polymers [i](#)

There are no such residues in this entry.