



wwPDB X-ray Structure Validation Summary Report ⓘ

Mar 9, 2026 – 03:17 PM UTC

PDB ID : 7NCC / pdb_00007ncc
Title : Crystal structure of fructose-bisphosphate aldolase FBAP from *Bacillus methanolicus*
Authors : Einsle, O.; Zhang, L.; Guetle, D.; Jacquot, J.P.
Deposited on : 2021-01-28
Resolution : 2.00 Å (reported)

This is a wwPDB X-ray Structure Validation Summary Report for a publicly released PDB entry.

We welcome your comments at validation@mail.wwpdb.org

A user guide is available at

<https://www.wwpdb.org/validation/2017/XrayValidationReportHelp>

with specific help available everywhere you see the ⓘ symbol.

The types of validation reports are described at

<http://www.wwpdb.org/validation/2017/FAQs#types>.

The following versions of software and data (see [references ⓘ](#)) were used in the production of this report:

MolProbity : 4-5-2 with Phenix2.0
Mogul : 2022.3.0, CSD as543be (2022)
Xtriage (Phenix) : 2.0
EDS : 3.0
Percentile statistics : 20250101.v01 (using entries in the PDB archive January 1st 2025)
CCP4 : 9.0.010 (Gargrove)
Density-Fitness : 1.0.12
Ideal geometry (proteins) : Engh & Huber (2001)
Ideal geometry (DNA, RNA) : Parkinson et al. (1996)
Validation Pipeline (wwPDB-VP) : 2.49

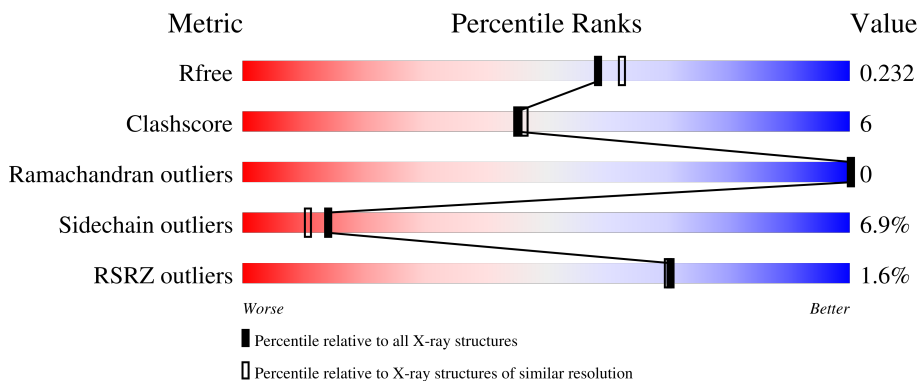
1 Overall quality at a glance

The following experimental techniques were used to determine the structure:

X-RAY DIFFRACTION

The reported resolution of this entry is 2.00 Å.

Percentile scores (ranging between 0-100) for global validation metrics of the entry are shown in the following graphic. The table shows the number of entries on which the scores are based.



Metric	Whole archive (#Entries)	Similar resolution (#Entries, resolution range(Å))
R_{free}	180053	10052 (2.00-2.00)
Clashscore	190562	11152 (2.00-2.00)
Ramachandran outliers	187476	11031 (2.00-2.00)
Sidechain outliers	187428	11029 (2.00-2.00)
RSRZ outliers	180081	10067 (2.00-2.00)

The table below summarises the geometric issues observed across the polymeric chains and their fit to the electron density. The red, orange, yellow and green segments of the lower bar indicate the fraction of residues that contain outliers for ≥ 3 , 2, 1 and 0 types of geometric quality criteria respectively. A grey segment represents the fraction of residues that are not modelled. The numeric value for each fraction is indicated below the corresponding segment, with a dot representing fractions $\leq 5\%$. The upper red bar (where present) indicates the fraction of residues that have poor fit to the electron density. The numeric value is given above the bar.

Mol	Chain	Length	Quality of chain
1	A	284	 2% 79% 19%
1	B	284	 2% 81% 17%

The following table lists non-polymeric compounds, carbohydrate monomers and non-standard residues in protein, DNA, RNA chains that are outliers for geometric or electron-density-fit criteria:

Mol	Type	Chain	Res	Chirality	Geometry	Clashes	Electron density
3	PO4	B	304	-	X	-	-

2 Entry composition [i](#)

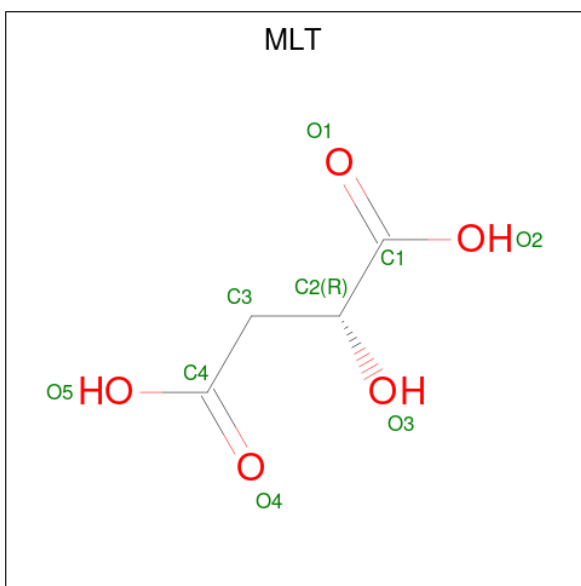
There are 5 unique types of molecules in this entry. The entry contains 4614 atoms, of which 0 are hydrogens and 0 are deuteriums.

In the tables below, the ZeroOcc column contains the number of atoms modelled with zero occupancy, the AltConf column contains the number of residues with at least one atom in alternate conformation and the Trace column contains the number of residues modelled with at most 2 atoms.

- Molecule 1 is a protein called Putative class II fructose-1,6-bisphosphate aldolase.

Mol	Chain	Residues	Atoms					ZeroOcc	AltConf	Trace
			Total	C	N	O	S			
1	A	284	Total 2153	C 1356	N 367	O 417	S 13	0	2	0
1	B	284	Total 2135	C 1346	N 364	O 412	S 13	0	0	0

- Molecule 2 is D-MALATE (CCD ID: MLT) (formula: C₄H₆O₅).



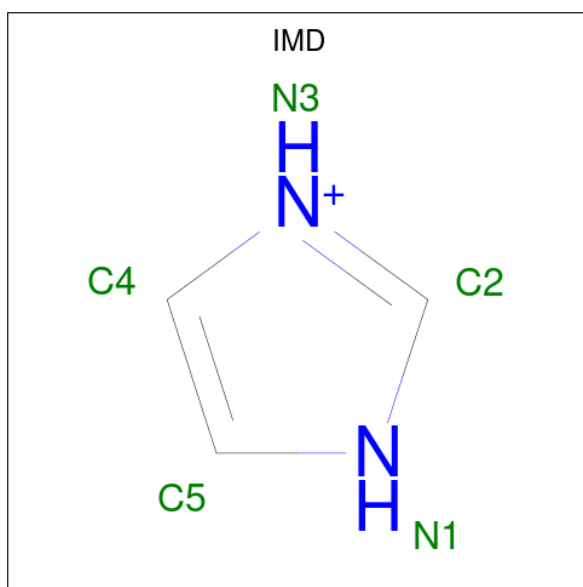
Mol	Chain	Residues	Atoms			ZeroOcc	AltConf
			Total	C	O		
2	A	1	Total 9	C 4	O 5	0	0

- Molecule 3 is PHOSPHATE ION (CCD ID: PO4) (formula: O₄P).



Mol	Chain	Residues	Atoms			ZeroOcc	AltConf
3	A	1	Total	O	P	0	0
			5	4	1		
3	A	1	Total	O	P	0	0
			5	4	1		
3	A	1	Total	O	P	0	0
			5	4	1		
3	B	1	Total	O	P	0	0
			5	4	1		
3	B	1	Total	O	P	0	0
			5	4	1		
3	B	1	Total	O	P	0	0
			5	4	1		

- Molecule 4 is IMIDAZOLE (CCD ID: IMD) (formula: C₃H₅N₂).



Mol	Chain	Residues	Atoms			ZeroOcc	AltConf
4	B	1	Total	C	N	0	0
			5	3	2		

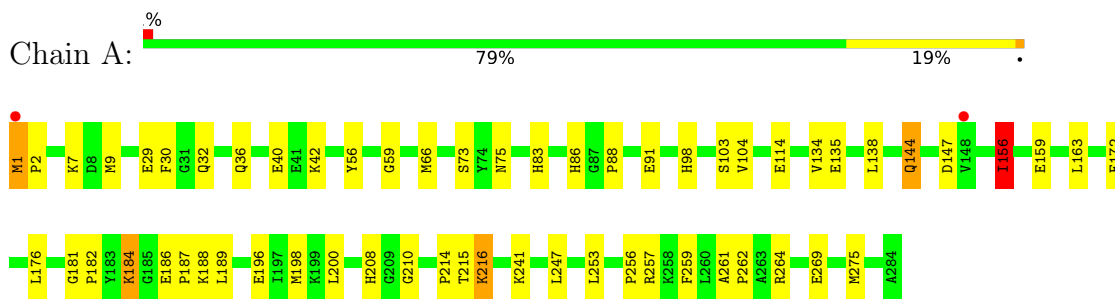
- Molecule 5 is water.

Mol	Chain	Residues	Atoms		ZeroOcc	AltConf
5	A	125	Total	O	0	0
			125	125		
5	B	157	Total	O	0	0
			157	157		

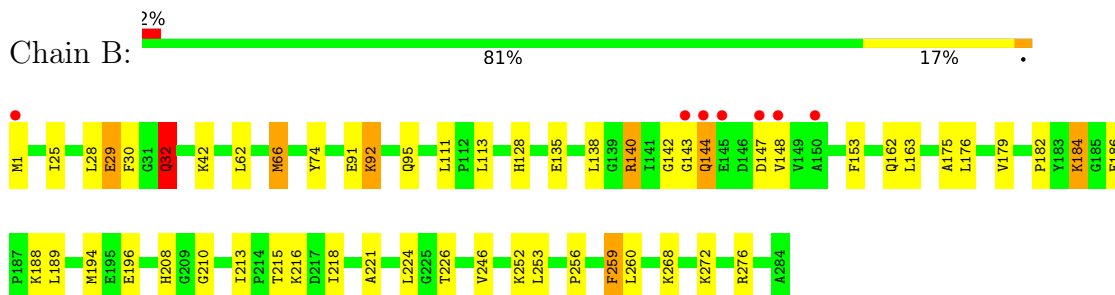
3 Residue-property plots [i](#)

These plots are drawn for all protein, RNA, DNA and oligosaccharide chains in the entry. The first graphic for a chain summarises the proportions of the various outlier classes displayed in the second graphic. The second graphic shows the sequence view annotated by issues in geometry and electron density. Residues are color-coded according to the number of geometric quality criteria for which they contain at least one outlier: green = 0, yellow = 1, orange = 2 and red = 3 or more. A red dot above a residue indicates a poor fit to the electron density ($RSRZ > 2$). Stretches of 2 or more consecutive residues without any outlier are shown as a green connector. Residues present in the sample, but not in the model, are shown in grey.

- Molecule 1: Putative class II fructose-1,6-bisphosphate aldolase



- Molecule 1: Putative class II fructose-1,6-bisphosphate aldolase



4 Data and refinement statistics

Property	Value	Source
Space group	C 2 2 21	Depositor
Cell constants a, b, c, α , β , γ	91.58Å 122.12Å 160.96Å 90.00° 90.00° 90.00°	Depositor
Resolution (Å)	44.08 – 2.00 44.08 – 2.00	Depositor EDS
% Data completeness (in resolution range)	99.1 (44.08-2.00) 99.1 (44.08-2.00)	Depositor EDS
R_{merge}	(Not available)	Depositor
R_{sym}	(Not available)	Depositor
$\langle I/\sigma(I) \rangle$ ¹	2.76 (at 2.00Å)	Xtrriage
Refinement program	REFMAC 5.8.0267	Depositor
R, R_{free}	0.186 , 0.252 (Not available) , 0.232	Depositor DCC
R_{free} test set	3109 reflections (5.09%)	wwPDB-VP
Wilson B-factor (Å ²)	23.2	Xtrriage
Anisotropy	0.909	Xtrriage
Bulk solvent k_{sol} (e/Å ³), B_{sol} (Å ²)	0.35 , 52.6	EDS
L-test for twinning ²	$\langle L \rangle = 0.44$, $\langle L^2 \rangle = 0.27$	Xtrriage
Estimated twinning fraction	No twinning to report.	Xtrriage
F_o, F_c correlation	0.96	EDS
Total number of atoms	4614	wwPDB-VP
Average B, all atoms (Å ²)	38.0	wwPDB-VP

Xtrriage's analysis on translational NCS is as follows: *The analyses of the Patterson function reveals a significant off-origin peak that is 56.41 % of the origin peak, indicating pseudo-translational symmetry. The chance of finding a peak of this or larger height randomly in a structure without pseudo-translational symmetry is equal to 2.7476e-05. The detected translational NCS is most likely also responsible for the elevated intensity ratio.*

¹Intensities estimated from amplitudes.

²Theoretical values of $\langle |L| \rangle$, $\langle L^2 \rangle$ for acentric reflections are 0.5, 0.333 respectively for untwinned datasets, and 0.375, 0.2 for perfectly twinned datasets.

5 Model quality [i](#)

5.1 Standard geometry [i](#)

Bond lengths and bond angles in the following residue types are not validated in this section: MLT, IMD, PO4

The Z score for a bond length (or angle) is the number of standard deviations the observed value is removed from the expected value. A bond length (or angle) with $|Z| > 5$ is considered an outlier worth inspection. RMSZ is the root-mean-square of all Z scores of the bond lengths (or angles).

Mol	Chain	Bond lengths		Bond angles	
		RMSZ	# Z >5	RMSZ	# Z >5
1	A	1.26	8/2188 (0.4%)	1.53	10/2953 (0.3%)
1	B	1.28	8/2170 (0.4%)	1.53	12/2929 (0.4%)
All	All	1.27	16/4358 (0.4%)	1.53	22/5882 (0.4%)

Chiral center outliers are detected by calculating the chiral volume of a chiral center and verifying if the center is modelled as a planar moiety or with the opposite hand. A planarity outlier is detected by checking planarity of atoms in a peptide group, atoms in a mainchain group or atoms of a sidechain that are expected to be planar.

Mol	Chain	#Chirality outliers	#Planarity outliers
1	B	0	1

The worst 5 of 16 bond length outliers are listed below:

Mol	Chain	Res	Type	Atoms	Z	Observed(Å)	Ideal(Å)
1	B	32	GLN	C-O	7.51	1.32	1.24
1	A	256	PRO	C-O	-6.47	1.15	1.24
1	A	181	GLY	C-N	5.88	1.40	1.33
1	A	275	MET	C-O	5.83	1.30	1.24
1	B	162	GLN	C-O	5.72	1.30	1.24

The worst 5 of 22 bond angle outliers are listed below:

Mol	Chain	Res	Type	Atoms	Z	Observed(°)	Ideal(°)
1	A	181	GLY	CA-C-N	10.91	131.61	119.93
1	A	181	GLY	C-N-CA	10.91	131.61	119.93
1	B	111	LEU	CA-C-N	9.20	129.28	119.90
1	B	111	LEU	C-N-CA	9.20	129.28	119.90
1	B	91	GLU	CB-CG-CD	7.36	125.11	112.60

There are no chirality outliers.

All (1) planarity outliers are listed below:

Mol	Chain	Res	Type	Group
1	B	144	GLN	Mainchain

5.2 Too-close contacts [i](#)

In the following table, the Non-H and H(model) columns list the number of non-hydrogen atoms and hydrogen atoms in the chain respectively. The H(added) column lists the number of hydrogen atoms added and optimized by MolProbity. The Clashes column lists the number of clashes within the asymmetric unit, whereas Symm-Clashes lists symmetry-related clashes.

Mol	Chain	Non-H	H(model)	H(added)	Clashes	Symm-Clashes
1	A	2153	0	2169	30	0
1	B	2135	0	2157	21	0
2	A	9	0	4	1	0
3	A	15	0	0	0	0
3	B	15	0	0	1	0
4	B	5	0	5	0	0
5	A	125	0	0	6	0
5	B	157	0	0	3	1
All	All	4614	0	4335	51	1

The all-atom clashscore is defined as the number of clashes found per 1000 atoms (including hydrogen atoms). The all-atom clashscore for this structure is 6.

The worst 5 of 51 close contacts within the same asymmetric unit are listed below, sorted by their clash magnitude.

Atom-1	Atom-2	Interatomic distance (Å)	Clash overlap (Å)
1:A:186:GLU:OE1	1:A:187:PRO:CD	2.17	0.91
1:A:186:GLU:OE1	1:A:187:PRO:HD3	1.76	0.84
1:A:86:HIS:HE1	5:A:428:HOH:O	1.62	0.80
1:A:186:GLU:OE1	1:A:187:PRO:HD2	1.84	0.76
1:B:92:LYS:HE2	1:B:95:GLN:HE22	1.52	0.72

All (1) symmetry-related close contacts are listed below. The label for Atom-2 includes the symmetry operator and encoded unit-cell translations to be applied.

Atom-1	Atom-2	Interatomic distance (Å)	Clash overlap (Å)
5:B:527:HOH:O	5:B:527:HOH:O[4_556]	1.17	1.03

5.3 Torsion angles [i](#)

5.3.1 Protein backbone [i](#)

In the following table, the Percentiles column shows the percent Ramachandran outliers of the chain as a percentile score with respect to all X-ray entries followed by that with respect to entries of similar resolution.

The Analysed column shows the number of residues for which the backbone conformation was analysed, and the total number of residues.

Mol	Chain	Analysed	Favoured	Allowed	Outliers	Percentiles	
1	A	284/284 (100%)	275 (97%)	9 (3%)	0	100	100
1	B	282/284 (99%)	272 (96%)	10 (4%)	0	100	100
All	All	566/568 (100%)	547 (97%)	19 (3%)	0	100	100

There are no Ramachandran outliers to report.

5.3.2 Protein sidechains [i](#)

In the following table, the Percentiles column shows the percent sidechain outliers of the chain as a percentile score with respect to all X-ray entries followed by that with respect to entries of similar resolution.

The Analysed column shows the number of residues for which the sidechain conformation was analysed, and the total number of residues.

Mol	Chain	Analysed	Rotameric	Outliers	Percentiles	
1	A	233/231 (101%)	216 (93%)	17 (7%)	13	9
1	B	231/231 (100%)	216 (94%)	15 (6%)	15	12
All	All	464/462 (100%)	432 (93%)	32 (7%)	14	11

5 of 32 residues with a non-rotameric sidechain are listed below:

Mol	Chain	Res	Type
1	B	188	LYS
1	B	215	THR
1	A	200	LEU
1	A	198	MET
1	B	252	LYS

Sometimes sidechains can be flipped to improve hydrogen bonding and reduce clashes. 5 of 11 such sidechains are listed below:

Mol	Chain	Res	Type
1	B	11	ASN
1	B	95	GLN
1	B	236	GLN
1	B	208	HIS
1	A	144	GLN

5.3.3 RNA [i](#)

There are no RNA molecules in this entry.

5.4 Non-standard residues in protein, DNA, RNA chains [i](#)

There are no non-standard protein/DNA/RNA residues in this entry.

5.5 Carbohydrates [i](#)

There are no oligosaccharides in this entry.

5.6 Ligand geometry [i](#)

8 ligands are modelled in this entry.

In the following table, the Counts columns list the number of bonds (or angles) for which Mogul statistics could be retrieved, the number of bonds (or angles) that are observed in the model and the number of bonds (or angles) that are defined in the Chemical Component Dictionary. The Link column lists molecule types, if any, to which the group is linked. The Z score for a bond length (or angle) is the number of standard deviations the observed value is removed from the expected value. A bond length (or angle) with $|Z| > 2$ is considered an outlier worth inspection. RMSZ is the root-mean-square of all Z scores of the bond lengths (or angles).

Mol	Type	Chain	Res	Link	Bond lengths			Bond angles		
					Counts	RMSZ	# $ Z > 2$	Counts	RMSZ	# $ Z > 2$
4	IMD	B	301	-	5,5,5	0.59	0	5,5,5	0.47	0
2	MLT	A	301	-	8,8,8	1.78	3 (37%)	10,10,10	1.16	1 (10%)
3	PO4	B	304	-	4,4,4	2.55	4 (100%)	6,6,6	0.74	0
3	PO4	B	302	-	4,4,4	1.61	0	6,6,6	0.90	0
3	PO4	A	304	-	4,4,4	0.75	0	6,6,6	0.94	0
3	PO4	A	302	-	4,4,4	1.38	0	6,6,6	0.67	0
3	PO4	A	303	-	4,4,4	1.76	1 (25%)	6,6,6	0.73	0
3	PO4	B	303	-	4,4,4	1.53	1 (25%)	6,6,6	0.31	0

In the following table, the Chirals column lists the number of chiral outliers, the number of chiral centers analysed, the number of these observed in the model and the number defined in the Chemical Component Dictionary. Similar counts are reported in the Torsion and Rings columns. '-' means no outliers of that kind were identified.

Mol	Type	Chain	Res	Link	Chirals	Torsions	Rings
4	IMD	B	301	-	-	-	0/1/1/1
2	MLT	A	301	-	-	6/8/8/8	-

The worst 5 of 9 bond length outliers are listed below:

Mol	Chain	Res	Type	Atoms	Z	Observed(Å)	Ideal(Å)
2	A	301	MLT	O5-C4	-3.30	1.19	1.30
3	B	304	PO4	P-O4	-2.84	1.46	1.54
2	A	301	MLT	O1-C1	2.74	1.30	1.22
3	B	304	PO4	P-O1	-2.74	1.44	1.50
3	B	304	PO4	P-O3	-2.41	1.47	1.54

All (1) bond angle outliers are listed below:

Mol	Chain	Res	Type	Atoms	Z	Observed(°)	Ideal(°)
2	A	301	MLT	C3-C2-C1	2.03	115.52	110.53

There are no chirality outliers.

5 of 6 torsion outliers are listed below:

Mol	Chain	Res	Type	Atoms
2	A	301	MLT	O3-C2-C3-C4
2	A	301	MLT	O1-C1-C2-C3
2	A	301	MLT	O2-C1-C2-C3
2	A	301	MLT	C2-C3-C4-O5
2	A	301	MLT	O1-C1-C2-O3

There are no ring outliers.

2 monomers are involved in 2 short contacts:

Mol	Chain	Res	Type	Clashes	Symm-Clashes
2	A	301	MLT	1	0
3	B	304	PO4	1	0

5.7 Other polymers [i](#)

There are no such residues in this entry.

5.8 Polymer linkage issues [i](#)

There are no chain breaks in this entry.

6 Fit of model and data [i](#)

6.1 Protein, DNA and RNA chains [i](#)

In the following table, the column labelled ‘#RSRZ > 2’ contains the number (and percentage) of RSRZ outliers, followed by percent RSRZ outliers for the chain as percentile scores relative to all X-ray entries and entries of similar resolution. The OWAB column contains the minimum, median, 95th percentile and maximum values of the occupancy-weighted average B-factor per residue. The column labelled ‘Q < 0.9’ lists the number of (and percentage) of residues with an average occupancy less than 0.9.

Mol	Chain	Analysed	<RSRZ>	#RSRZ>2	OWAB(Å ²)	Q<0.9
1	A	284/284 (100%)	-0.29	2 (0%) 84 84	16, 36, 68, 118	2 (0%)
1	B	284/284 (100%)	-0.33	7 (2%) 58 58	20, 31, 61, 119	0
All	All	568/568 (100%)	-0.31	9 (1%) 70 70	16, 33, 66, 119	2 (0%)

The worst 5 of 9 RSRZ outliers are listed below:

Mol	Chain	Res	Type	RSRZ
1	B	148	VAL	4.4
1	A	148	VAL	4.0
1	B	145	GLU	3.7
1	B	1	MET	3.0
1	B	147	ASP	2.7

6.2 Non-standard residues in protein, DNA, RNA chains [i](#)

There are no non-standard protein/DNA/RNA residues in this entry.

6.3 Carbohydrates [i](#)

There are no oligosaccharides in this entry.

6.4 Ligands [i](#)

In the following table, the Atoms column lists the number of modelled atoms in the group and the number defined in the chemical component dictionary. The B-factors column lists the minimum, median, 95th percentile and maximum values of B factors of atoms in the group. The column labelled ‘Q < 0.9’ lists the number of atoms with occupancy less than 0.9.

Mol	Type	Chain	Res	Atoms	RSCC	RSR	B-factors(\AA^2)	Q<0.9
2	MLT	A	301	9/9	0.82	0.13	56,62,72,77	0
4	IMD	B	301	5/5	0.83	0.19	60,64,72,79	0
3	PO4	A	304	5/5	0.98	0.06	39,39,48,56	0
3	PO4	A	302	5/5	0.99	0.04	35,39,45,51	0
3	PO4	B	302	5/5	0.99	0.05	32,34,40,43	0
3	PO4	B	303	5/5	0.99	0.06	31,36,40,48	0
3	PO4	B	304	5/5	0.99	0.04	27,29,30,31	0
3	PO4	A	303	5/5	0.99	0.04	31,32,34,35	0

6.5 Other polymers [\(i\)](#)

There are no such residues in this entry.