



wwPDB NMR Structure Validation Summary Report ⓘ

Mar 9, 2026 – 04:21 AM UTC

PDB ID : 7ND1 / pdb_00007nd1
BMRB ID : 34597
Title : First-in-class small molecule inhibitors of Polycomb Repressive Complex 1 (PRC1) RING domain
Authors : Cierpicki, T.; Lund, G.; Jaremko, L.
Deposited on : 2021-01-29

This is a wwPDB NMR Structure Validation Summary Report for a publicly released PDB entry.

We welcome your comments at validation@mail.wwpdb.org

A user guide is available at

<https://www.wwpdb.org/validation/2017/NMRValidationReportHelp>

with specific help available everywhere you see the ⓘ symbol.

The types of validation reports are described at

<http://www.wwpdb.org/validation/2017/FAQs#types>.

The following versions of software and data (see [references ⓘ](#)) were used in the production of this report:

MolProbity : 4-5-2 with Phenix2.0
Mogul : 2022.3.0, CSD as543be (2022)
Buster-report : wwPDB partial adaption of 1.1.7 (2018)
Percentile statistics : 20250101.v01 (using entries in the PDB archive January 1st 2025)
wwPDB-RCI : v_1n_11_5_13_A (Berjanski et al., 2005)
PANAV : Wang et al. (2010)
wwPDB-ShiftChecker : v1.2
Ideal geometry (proteins) : Engh & Huber (2001)
Ideal geometry (DNA, RNA) : Parkinson et al. (1996)
Validation Pipeline (wwPDB-VP) : 2.49

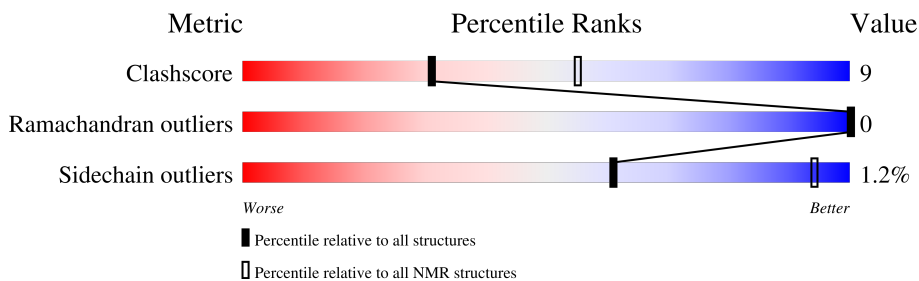
1 Overall quality at a glance

The following experimental techniques were used to determine the structure:

SOLUTION NMR

The overall completeness of chemical shifts assignment is 13%.

Percentile scores (ranging between 0-100) for global validation metrics of the entry are shown in the following graphic. The table shows the number of entries on which the scores are based.



Metric	Whole archive (#Entries)	NMR archive (#Entries)
Clashscore	229148	14424
Ramachandran outliers	224038	12848
Sidechain outliers	223484	12823

The table below summarises the geometric issues observed across the polymeric chains and their fit to the experimental data. The red, orange, yellow and green segments indicate the fraction of residues that contain outliers for ≥ 3 , 2, 1 and 0 types of geometric quality criteria. A cyan segment indicates the fraction of residues that are not part of the well-defined cores, and a grey segment represents the fraction of residues that are not modelled. The numeric value for each fraction is indicated below the corresponding segment, with a dot representing fractions $\leq 5\%$.

Mol	Chain	Length	Quality of chain
1	A	112	
2	H	101	

2 Ensemble composition and analysis

This entry contains 20 models. Model 9 is the overall representative, medoid model (most similar to other models). The authors have identified model 1 as representative, based on the following criterion: *lowest energy*.

The following residues are included in the computation of the global validation metrics.

Well-defined (core) protein residues			
Well-defined core	Residue range (total)	Backbone RMSD (Å)	Medoid model
1	A:16-A:77, A:89-A:103, H:1004-H:1102 (176)	0.11	9

Ill-defined regions of proteins are excluded from the global statistics.

Ligands and non-protein polymers are included in the analysis.

The models can be grouped into 2 clusters and 4 single-model clusters were found.

Cluster number	Models
1	1, 3, 4, 5, 7, 8, 9, 10, 13, 14, 15, 17, 18, 19
2	11, 16
Single-model clusters	2; 6; 12; 20

3 Entry composition

There are 4 unique types of molecules in this entry. The entry contains 3280 atoms, of which 1651 are hydrogens and 0 are deuteriums.

- Molecule 1 is a protein called E3 ubiquitin-protein ligase RING2.

Mol	Chain	Residues	Atoms					Trace	
			Total	C	H	N	O		S
1	A	100	1603	498	810	138	147	10	0

There are 5 discrepancies between the modelled and reference sequences:

Chain	Residue	Modelled	Actual	Comment	Reference
A	8	GLY	-	expression tag	UNP Q99496
A	9	PRO	-	expression tag	UNP Q99496
A	117	MET	-	expression tag	UNP Q99496
A	118	HIS	-	expression tag	UNP Q99496
A	119	ARG	-	expression tag	UNP Q99496

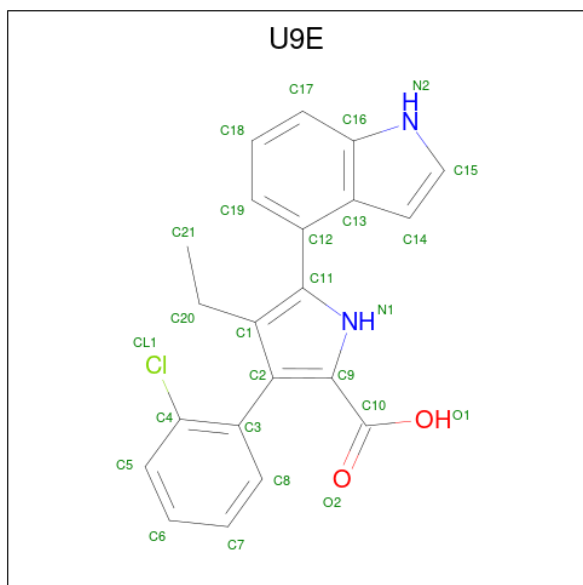
- Molecule 2 is a protein called Polycomb complex protein BMI-1.

Mol	Chain	Residues	Atoms					Trace	
			Total	C	H	N	O		S
2	H	99	1631	517	825	141	139	9	0

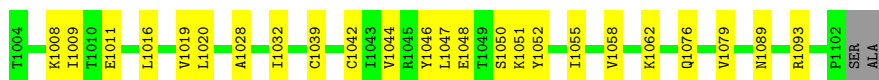
- Molecule 3 is ZINC ION (CCD ID: ZN) (formula: Zn).

Mol	Chain	Residues	Atoms	
			Total	Zn
3	A	2	2	2
3	H	2	2	2

- Molecule 4 is 3-(2-chlorophenyl)-4-ethyl-5-(1 {H}-indol-4-yl)-1 {H}-pyrrole-2-carboxylic acid (CCD ID: U9E) (formula: C₂₁H₁₇ClN₂O₂) (labeled as "Ligand of Interest" by depositor).



Mol	Chain	Residues	Atoms					
			Total	C	Cl	H	N	O
4	A	1	42	21	1	16	2	2



5 Refinement protocol and experimental data overview

The models were refined using the following method: *molecular dynamics*.

Of the 200 calculated structures, 20 were deposited, based on the following criterion: *structures with the lowest energy*.

The following table shows the software used for structure solution, optimisation and refinement.

Software name	Classification	Version
HADDOCK	refinement	2.4
HADDOCK	structure calculation	

The following table shows chemical shift validation statistics as aggregates over all chemical shift files. Detailed validation can be found in section 7 of this report.

Chemical shift file(s)	working_cs.cif
Number of chemical shift lists	1
Total number of shifts	378
Number of shifts mapped to atoms	354
Number of unparsed shifts	0
Number of shifts with mapping errors	24
Number of shifts with mapping warnings	0
Assignment completeness (well-defined parts)	13%

6 Model quality [i](#)

6.1 Standard geometry [i](#)

Bond lengths and bond angles in the following residue types are not validated in this section: ZN, U9E

There are no covalent bond-length or bond-angle outliers.

There are no bond-length outliers.

There are no bond-angle outliers.

There are no chirality outliers.

There are no planarity outliers.

6.2 Too-close contacts [i](#)

In the following table, the Non-H and H(model) columns list the number of non-hydrogen atoms and hydrogen atoms in each chain respectively. The H(added) column lists the number of hydrogen atoms added and optimized by MolProbity. The Clashes column lists the number of clashes averaged over the ensemble.

Mol	Chain	Non-H	H(model)	H(added)	Clashes
1	A	616	632	632	14±1
2	H	806	825	828	14±1
4	A	26	16	0	2±1
All	All	29040	29460	29202	510

The all-atom clashscore is defined as the number of clashes found per 1000 atoms (including hydrogen atoms). The all-atom clashscore for this structure is 9.

5 of 48 unique clashes are listed below, sorted by their clash magnitude.

Atom-1	Atom-2	Clash(Å)	Distance(Å)	Models	
				Worst	Total
1:A:68:LEU:HD21	2:H:1032:ILE:HG22	0.79	1.55	1	20
1:A:64:THR:OG1	1:A:67:CYS:SG	0.68	2.52	3	20
4:A:203:U9E:C21	4:A:203:U9E:C3	0.64	2.75	6	11
1:A:36:LEU:O	2:H:1009:ILE:HG12	0.59	1.96	8	20
2:H:1039:CYS:HB2	2:H:1042:CYS:SG	0.57	2.39	13	20

6.3 Torsion angles [i](#)

6.3.1 Protein backbone [i](#)

In the following table, the Percentiles column shows the percent Ramachandran outliers of the chain as a percentile score with respect to all PDB entries followed by that with respect to all NMR entries. The Analysed column shows the number of residues for which the backbone conformation was analysed and the total number of residues.

Mol	Chain	Analysed	Favoured	Allowed	Outliers	Percentiles	
1	A	76/112 (68%)	70±0 (92±0%)	6±0 (8±0%)	0±0 (0±0%)	100	100
2	H	97/101 (96%)	91±0 (94±0%)	6±0 (6±0%)	0±0 (0±0%)	100	100
All	All	3460/4260 (81%)	3220 (93%)	240 (7%)	0 (0%)	100	100

There are no Ramachandran outliers.

6.3.2 Protein sidechains [i](#)

In the following table, the Percentiles column shows the percent sidechain outliers of the chain as a percentile score with respect to all PDB entries followed by that with respect to all NMR entries. The Analysed column shows the number of residues for which the sidechain conformation was analysed and the total number of residues.

Mol	Chain	Analysed	Rotameric	Outliers	Percentiles	
1	A	74/105 (70%)	72±1 (97±1%)	2±1 (3±1%)	40	87
2	H	93/94 (99%)	93±0 (100±0%)	0±0 (0±0%)	100	100
All	All	3340/3980 (84%)	3300 (99%)	40 (1%)	61	94

All 5 unique residues with a non-rotameric sidechain are listed below. They are sorted by the frequency of occurrence in the ensemble.

Mol	Chain	Res	Type	Models (Total)
1	A	25	GLN	18
1	A	100	LEU	11
1	A	62	MET	5
1	A	94	LEU	4
1	A	97	LYS	2

6.3.3 RNA [i](#)

There are no RNA molecules in this entry.

6.4 Non-standard residues in protein, DNA, RNA chains [i](#)

There are no non-standard protein/DNA/RNA residues in this entry.

6.5 Carbohydrates [i](#)

There are no oligosaccharides in this entry.

6.6 Ligand geometry [i](#)

Of 5 ligands modelled in this entry, 4 are monoatomic - leaving 1 for Mogul analysis.

In the following table, the Counts columns list the number of bonds for which Mogul statistics could be retrieved, the number of bonds that are observed in the model and the number of bonds that are defined in the chemical component dictionary. The Link column lists molecule types, if any, to which the group is linked. The Z score for a bond length is the number of standard deviations the observed value is removed from the expected value. A bond length with $|Z| > 2$ is considered an outlier worth inspection. RMSZ is the average root-mean-square of all Z scores of the bond lengths.

Mol	Type	Chain	Res	Link	Bond lengths		
					Counts	RMSZ	#Z>2
4	U9E	A	203	-	29,29,29	4.06±0.01	14±0 (48±0%)

In the following table, the Counts columns list the number of angles for which Mogul statistics could be retrieved, the number of angles that are observed in the model and the number of angles that are defined in the chemical component dictionary. The Link column lists molecule types, if any, to which the group is linked. The Z score for a bond angle is the number of standard deviations the observed value is removed from the expected value. A bond angle with $|Z| > 2$ is considered an outlier worth inspection. RMSZ is the average root-mean-square of all Z scores of the bond angles.

Mol	Type	Chain	Res	Link	Bond angles		
					Counts	RMSZ	#Z>2
4	U9E	A	203	-	35,42,42	1.64±0.01	6±0 (16±1%)

In the following table, the Chirals column lists the number of chiral outliers, the number of chiral centers analysed, the number of these observed in the model and the number defined in the chemical component dictionary. Similar counts are reported in the Torsion and Rings columns. '-' means no outliers of that kind were identified.

Mol	Type	Chain	Res	Link	Chirals	Torsions	Rings
4	U9E	A	203	-	-	0±0,14,20,20	0±0,4,4,4

5 of 14 unique bond outliers are listed below. They are sorted according to the Z-score of the worst occurrence in the ensemble.

Mol	Chain	Res	Type	Atoms	Z	Observed(Å)	Ideal(Å)	Models	
								Worst	Total
4	A	203	U9E	C9-C10	9.86	1.33	1.48	20	20
4	A	203	U9E	C12-C11	9.74	1.33	1.48	13	20
4	A	203	U9E	C3-C2	9.31	1.33	1.50	14	20
4	A	203	U9E	C13-C16	8.23	1.33	1.41	17	20
4	A	203	U9E	C12-C13	6.84	1.33	1.41	7	20

5 of 6 unique angle outliers are listed below. They are sorted according to the Z-score of the worst occurrence in the ensemble.

Mol	Chain	Res	Type	Atoms	Z	Observed(°)	Ideal(°)	Models	
								Worst	Total
4	A	203	U9E	C9-N1-C11	4.47	106.16	110.42	20	20
4	A	203	U9E	C12-C11-C1	3.77	125.21	131.31	4	20
4	A	203	U9E	C12-C11-N1	3.50	125.55	120.98	5	20
4	A	203	U9E	C10-C9-N1	3.48	125.39	121.25	3	20
4	A	203	U9E	C14-C15-N2	2.32	107.57	110.25	6	19

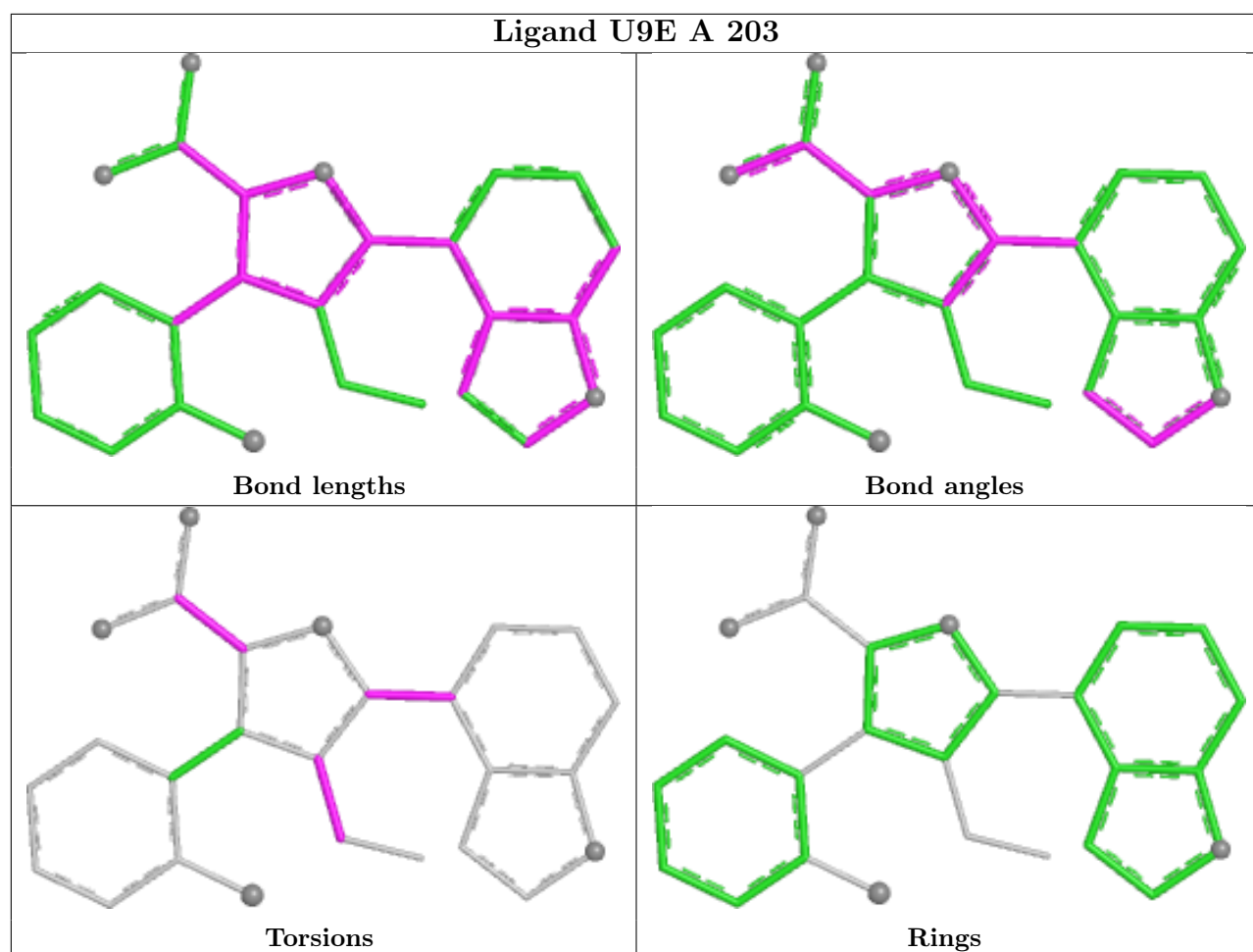
There are no chirality outliers.

All unique torsion outliers are listed below. They are sorted by the frequency of occurrence in the ensemble.

Mol	Chain	Res	Type	Atoms	Models (Total)
4	A	203	U9E	O1-C10-C9-C2	1
4	A	203	U9E	O2-C10-C9-N1	1
4	A	203	U9E	O1-C10-C9-N1	1

There are no ring outliers.

The following is a two-dimensional graphical depiction of Mogul quality analysis of bond lengths, bond angles, torsion angles, and ring geometry for all instances of the Ligand of Interest. In addition, ligands with molecular weight > 250 and outliers as shown on the validation Tables will also be included. For torsion angles, if less than 5% of the Mogul distribution of torsion angles is within 10 degrees of the torsion angle in question, then that torsion angle is considered an outlier. Any bond that is central to one or more torsion angles identified as an outlier by Mogul will be highlighted in the graph. For rings, the root-mean-square deviation (RMSD) between the ring in question and similar rings identified by Mogul is calculated over all ring torsion angles. If the average RMSD is greater than 60 degrees and the minimal RMSD between the ring in question and any Mogul-identified rings is also greater than 60 degrees, then that ring is considered an outlier. The outliers are highlighted in purple. The color gray indicates Mogul did not find sufficient equivalents in the CSD to analyse the geometry.



6.7 Other polymers [i](#)

There are no such molecules in this entry.

6.8 Polymer linkage issues [i](#)

There are no chain breaks in this entry.

7 Chemical shift validation i

The completeness of assignment taking into account all chemical shift lists is 13% for the well-defined parts and 13% for the entire structure.

7.1 Chemical shift list 1

File name: working_cs.cif

Chemical shift list name: *CS_RingBMI1b_R2_full.tab*

7.1.1 Bookkeeping i

The following table shows the results of parsing the chemical shift list and reports the number of nuclei with statistically unusual chemical shifts.

Total number of shifts	378
Number of shifts mapped to atoms	354
Number of unparsed shifts	0
Number of shifts with mapping errors	24
Number of shifts with mapping warnings	0
Number of shift outliers (ShiftChecker)	0

The following assigned chemical shifts were not mapped to the molecules present in the coordinate file.

- No matching atom found in the structure. First 5 (of 24) occurrences are reported below.

List ID	Chain	Res	Type	Atom	Shift Data		
					Value	Uncertainty	Ambiguity
1	A	10	THR	H	8.105	0.02	1
1	A	10	THR	N	115.274	0.20	1
1	A	11	GLN	H	8.233	0.02	1
1	A	11	GLN	N	123.354	0.20	1
1	A	13	LEU	H	8.479	0.02	1
1	A	13	LEU	N	122.991	0.20	1
1	A	14	SER	H	8.196	0.02	1
1	A	14	SER	N	114.077	0.20	1
1	A	15	LYS	H	8.02	0.02	1
1	A	15	LYS	N	122.345	0.20	1
1	A	16	THR	H	7.865	0.02	1
1	H	116	SER	H	7.879	0.02	1
1	H	116	SER	N	112.204	0.20	1
1	H	117	MET	H	8.142	0.02	1

Continued on next page...

Continued from previous page...

List ID	Chain	Res	Type	Atom	Shift Data		
					Value	Uncertainty	Ambiguity
1	H	117	MET	N	119.308	0.20	1
1	H	118	HIS	H	7.964	0.02	1
1	H	118	HIS	N	115.271	0.20	1
1	H	119	ARG	H	7.869	0.02	1
1	H	119	ARG	N	118.321	0.20	1
1	H	1004	THR	H	8.281	0.02	1
1	H	1103	SER	H	8.385	0.02	1
1	H	1103	SER	N	115.655	0.20	1
1	H	1104	ALA	H	7.921	0.02	1
1	H	1104	ALA	N	108.247	0.20	1

7.1.2 Chemical shift referencing [i](#)

The following table shows the suggested chemical shift referencing corrections.

Nucleus	# values	Correction \pm precision, ppm	Suggested action
$^{13}\text{C}_\alpha$	0	—	None (insufficient data)
$^{13}\text{C}_\beta$	0	—	None (insufficient data)
$^{13}\text{C}'$	0	—	None (insufficient data)
^{15}N	189	0.98 ± 0.19	Should be applied

7.1.3 Completeness of resonance assignments [i](#)

The following table shows the completeness of the chemical shift assignments for the well-defined regions of the structure. The overall completeness is 13%, i.e. 318 atoms were assigned a chemical shift out of a possible 2511. 0 out of 30 assigned methyl groups (LEU and VAL) were assigned stereospecifically.

	Total	^1H	^{13}C	^{15}N
Backbone	318/866 (37%)	159/347 (46%)	0/352 (0%)	159/167 (95%)
Sidechain	0/1489 (0%)	0/971 (0%)	0/458 (0%)	0/60 (0%)
Aromatic	0/156 (0%)	0/79 (0%)	0/72 (0%)	0/5 (0%)
Overall	318/2511 (13%)	159/1397 (11%)	0/882 (0%)	159/232 (69%)

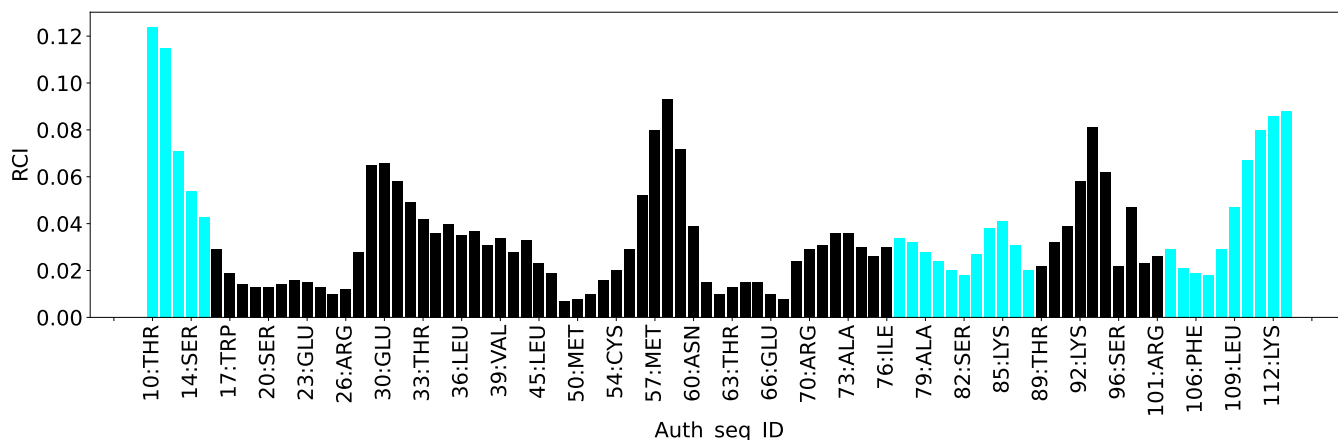
7.1.4 Statistically unusual chemical shifts [i](#)

There are no statistically unusual chemical shifts.

7.1.5 Random Coil Index (RCI) plots [i](#)

The image below reports *random coil index* values for the protein chains in the structure. The height of each bar gives a probability of a given residue to be disordered, as predicted from the available chemical shifts and the amino acid sequence. A value above 0.2 is an indication of significant predicted disorder. The colour of the bar shows whether the residue is in the well-defined core (black) or in the ill-defined residue ranges (cyan), as described in section 2 on ensemble composition. If well-defined core and ill-defined regions are not identified then it is shown as gray bars.

Random coil index (RCI) for chain A:



Random coil index (RCI) for chain H:

