



wwPDB X-ray Structure Validation Summary Report ⓘ

Mar 5, 2026 – 05:54 PM UTC

PDB ID : 2NO3 / pdb_00002no3
Title : Novel 4-anilinopyrimidines as potent JNK1 Inhibitors
Authors : Abad-Zapatero, C.
Deposited on : 2006-10-24
Resolution : 3.20 Å(reported)

This is a wwPDB X-ray Structure Validation Summary Report for a publicly released PDB entry.

We welcome your comments at validation@mail.wwpdb.org

A user guide is available at

<https://www.wwpdb.org/validation/2017/XrayValidationReportHelp>

with specific help available everywhere you see the ⓘ symbol.

The types of validation reports are described at

<https://www.wwpdb.org/validation/2017/FAQs#types>.

The following versions of software and data (see [references ⓘ](#)) were used in the production of this report:

MolProbity : 4-5-2 with Phenix2.0
Mogul : 2022.3.0, CSD as543be (2022)
Xtrriage (Phenix) : **NOT EXECUTED**
EDS : **NOT EXECUTED**
Buster-report : wwPDB partial adaption of 1.1.7 (2018)
Percentile statistics : 20250101.v01 (using entries in the PDB archive January 1st 2025)
Ideal geometry (proteins) : Engh & Huber (2001)
Ideal geometry (DNA, RNA) : Parkinson et al. (1996)
Validation Pipeline (wwPDB-VP) : 2.49

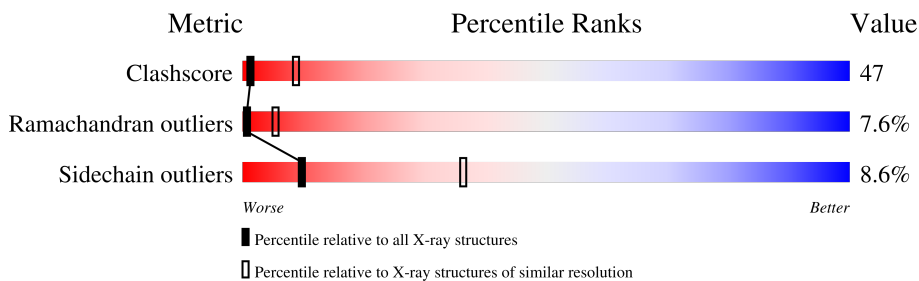
1 Overall quality at a glance

The following experimental techniques were used to determine the structure:

X-RAY DIFFRACTION

The reported resolution of this entry is 3.20 Å.

Percentile scores (ranging between 0-100) for global validation metrics of the entry are shown in the following graphic. The table shows the number of entries on which the scores are based.



Metric	Whole archive (#Entries)	Similar resolution (#Entries, resolution range(Å))
Clashscore	190562	1573 (3.20-3.20)
Ramachandran outliers	187476	1548 (3.20-3.20)
Sidechain outliers	187428	1547 (3.20-3.20)

The table below summarises the geometric issues observed across the polymeric chains and their fit to the electron density. The red, orange, yellow and green segments of the lower bar indicate the fraction of residues that contain outliers for ≥ 3 , 2, 1 and 0 types of geometric quality criteria respectively. A grey segment represents the fraction of residues that are not modelled. The numeric value for each fraction is indicated below the corresponding segment, with a dot representing fractions $\leq 5\%$.

Note EDS was not executed.

Mol	Chain	Length	Quality of chain
1	A	370	32% 51% 13% . .
1	B	370	32% 52% 12% . .
2	F	11	73% 9% 9% 9%
2	G	11	27% 45% 18% 9%

The following table lists non-polymeric compounds, carbohydrate monomers and non-standard residues in protein, DNA, RNA chains that are outliers for geometric or electron-density-fit criteria:

Mol	Type	Chain	Res	Chirality	Geometry	Clashes	Electron density
3	SO4	A	701	-	-	X	-
4	859	A	901	-	-	X	-

2 Entry composition [i](#)

There are 4 unique types of molecules in this entry. The entry contains 5965 atoms, of which 0 are hydrogens and 0 are deuteriums.

In the tables below, the ZeroOcc column contains the number of atoms modelled with zero occupancy, the AltConf column contains the number of residues with at least one atom in alternate conformation and the Trace column contains the number of residues modelled with at most 2 atoms.

- Molecule 1 is a protein called Mitogen-activated protein kinase 8.

Mol	Chain	Residues	Atoms					ZeroOcc	AltConf	Trace
			Total	C	N	O	S			
1	A	357	2869	1838	483	526	22	0	0	0
1	B	357	2860	1834	478	526	22	0	0	0

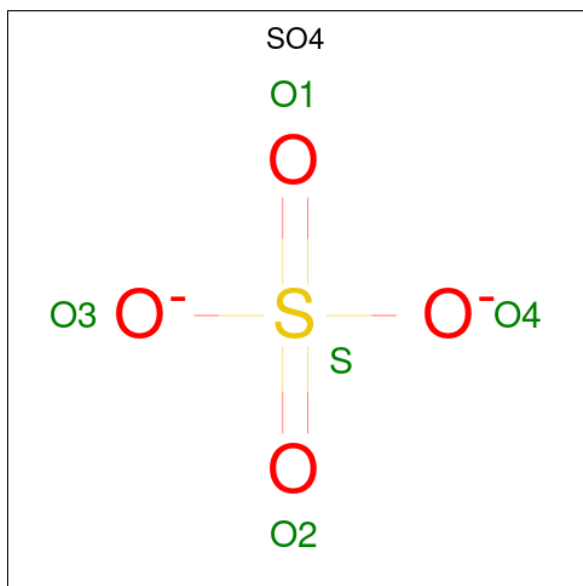
There are 16 discrepancies between the modelled and reference sequences:

Chain	Residue	Modelled	Actual	Comment	Reference
A	183	GLU	THR	engineered mutation	UNP P45983
A	185	GLU	TYR	engineered mutation	UNP P45983
A	365	HIS	-	expression tag	UNP P45983
A	366	HIS	-	expression tag	UNP P45983
A	367	HIS	-	expression tag	UNP P45983
A	368	HIS	-	expression tag	UNP P45983
A	369	HIS	-	expression tag	UNP P45983
A	370	HIS	-	expression tag	UNP P45983
B	183	GLU	THR	engineered mutation	UNP P45983
B	185	GLU	TYR	engineered mutation	UNP P45983
B	365	HIS	-	expression tag	UNP P45983
B	366	HIS	-	expression tag	UNP P45983
B	367	HIS	-	expression tag	UNP P45983
B	368	HIS	-	expression tag	UNP P45983
B	369	HIS	-	expression tag	UNP P45983
B	370	HIS	-	expression tag	UNP P45983

- Molecule 2 is a protein called C-JUN-AMINO-TERMINAL KINASE-INTERACTING protein 1.

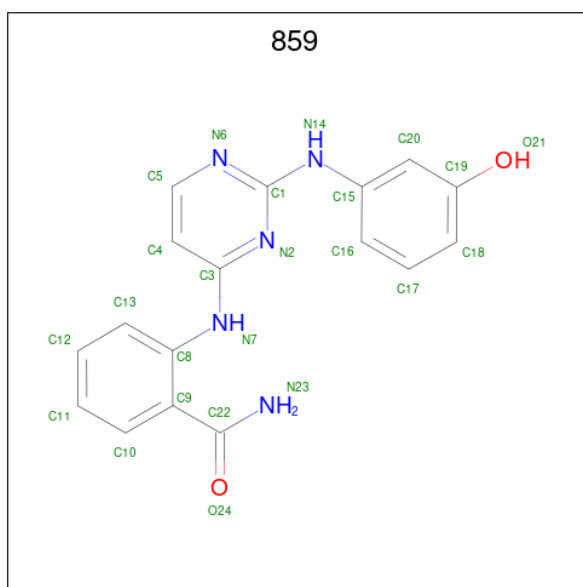
Mol	Chain	Residues	Atoms				ZeroOcc	AltConf	Trace
			Total	C	N	O			
2	F	10	84	55	15	14	0	0	0
2	G	10	84	55	15	14	0	0	0

- Molecule 3 is SULFATE ION (CCD ID: SO4) (formula: O₄S).



Mol	Chain	Residues	Atoms			ZeroOcc	AltConf
3	A	1	Total	O	S	0	0
			5	4	1		
3	A	1	Total	O	S	0	0
			5	4	1		
3	B	1	Total	O	S	0	0
			5	4	1		
3	B	1	Total	O	S	0	0
			5	4	1		

- Molecule 4 is 2-({2-[(3-HYDROXYPHENYL)AMINO]PYRIMIDIN-4-YL}AMINO)BENZAMIDE (CCD ID: 859) (formula: C₁₇H₁₅N₅O₂).



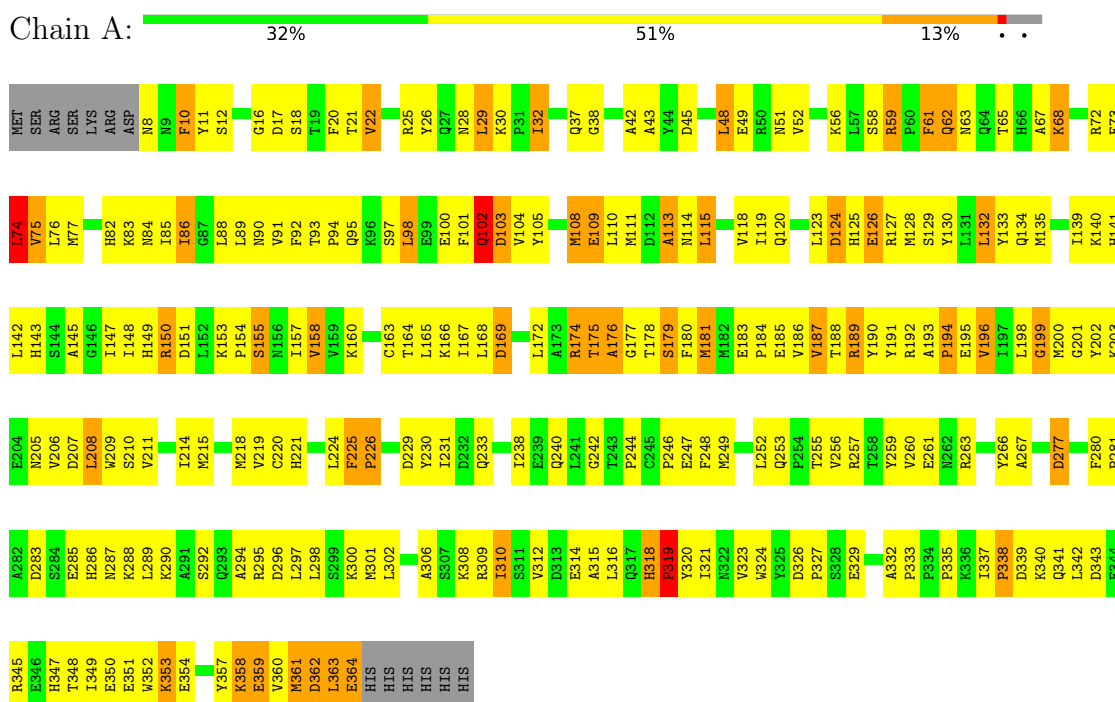
Mol	Chain	Residues	Atoms				ZeroOcc	AltConf
			Total	C	N	O		
4	A	1	24	17	5	2	0	0
4	B	1	24	17	5	2	0	0

3 Residue-property plots

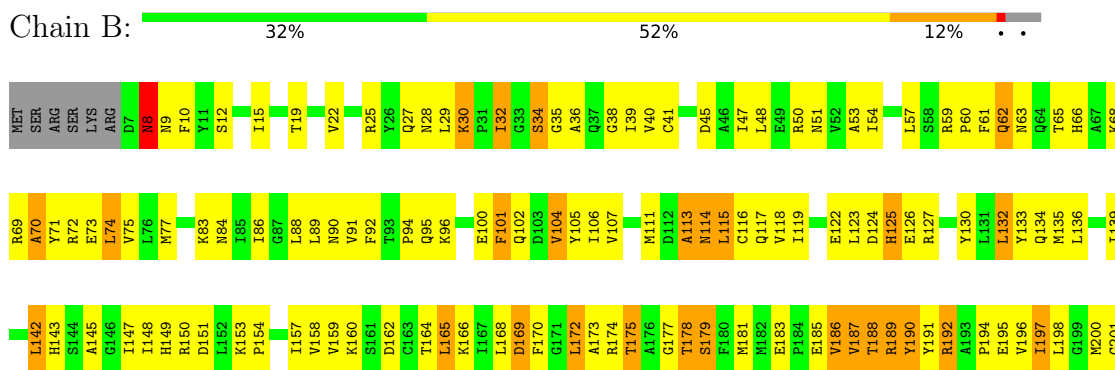
These plots are drawn for all protein, RNA, DNA and oligosaccharide chains in the entry. The first graphic for a chain summarises the proportions of the various outlier classes displayed in the second graphic. The second graphic shows the sequence view annotated by issues in geometry. Residues are color-coded according to the number of geometric quality criteria for which they contain at least one outlier: green = 0, yellow = 1, orange = 2 and red = 3 or more. Stretches of 2 or more consecutive residues without any outlier are shown as a green connector. Residues present in the sample, but not in the model, are shown in grey.

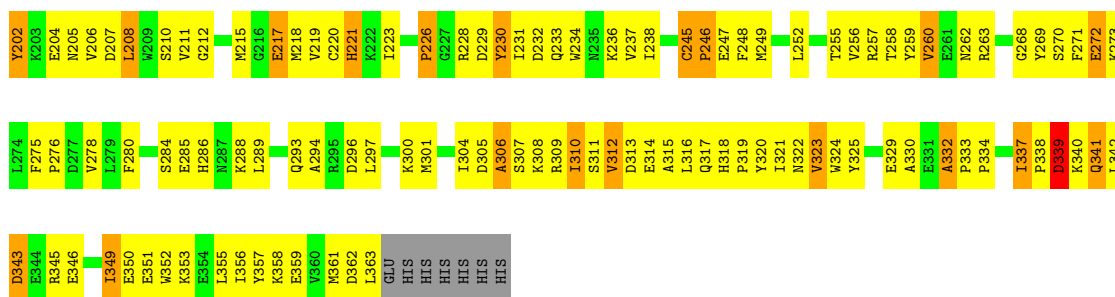
Note EDS was not executed.

- Molecule 1: Mitogen-activated protein kinase 8



- Molecule 1: Mitogen-activated protein kinase 8





- Molecule 2: C-JUN-AMINO-TERMINAL KINASE-INTERACTING protein 1



- Molecule 2: C-JUN-AMINO-TERMINAL KINASE-INTERACTING protein 1



4 Data and refinement statistics

Xtrriage (Phenix) and EDS were not executed - this section is therefore incomplete.

Property	Value	Source
Space group	P 32 2 1	Depositor
Cell constants a, b, c, α , β , γ	157.20Å 157.20Å 123.36Å 90.00° 90.00° 120.00°	Depositor
Resolution (Å)	19.98 – 3.20	Depositor
% Data completeness (in resolution range)	75.2 (19.98-3.20)	Depositor
R_{merge}	0.08	Depositor
R_{sym}	0.08	Depositor
Refinement program	CNX 2002	Depositor
R, R_{free}	0.206 , 0.276	Depositor
Estimated twinning fraction	No twinning to report.	Xtrriage
Total number of atoms	5965	wwPDB-VP
Average B, all atoms (Å ²)	64.0	wwPDB-VP

5 Model quality [i](#)

5.1 Standard geometry [i](#)

Bond lengths and bond angles in the following residue types are not validated in this section: SO4, 859

The Z score for a bond length (or angle) is the number of standard deviations the observed value is removed from the expected value. A bond length (or angle) with $|Z| > 5$ is considered an outlier worth inspection. RMSZ is the root-mean-square of all Z scores of the bond lengths (or angles).

Mol	Chain	Bond lengths		Bond angles	
		RMSZ	# Z >5	RMSZ	# Z >5
1	A	0.51	0/2934	1.02	16/3973 (0.4%)
1	B	0.47	0/2925	1.00	10/3962 (0.3%)
2	F	0.51	0/86	1.43	3/114 (2.6%)
2	G	0.43	0/86	1.34	2/114 (1.8%)
All	All	0.49	0/6031	1.02	31/8163 (0.4%)

There are no bond length outliers.

The worst 5 of 31 bond angle outliers are listed below:

Mol	Chain	Res	Type	Atoms	Z	Observed(°)	Ideal(°)
1	B	115	LEU	N-CA-C	-11.19	99.07	113.17
1	A	285	GLU	N-CA-C	-9.60	102.65	114.75
1	B	332	ALA	CA-C-N	8.50	129.14	120.38
1	B	332	ALA	C-N-CA	8.50	129.14	120.38
1	A	318	HIS	CA-C-N	7.80	129.59	119.84

There are no chirality outliers.

There are no planarity outliers.

5.2 Too-close contacts [i](#)

In the following table, the Non-H and H(model) columns list the number of non-hydrogen atoms and hydrogen atoms in the chain respectively. The H(added) column lists the number of hydrogen atoms added and optimized by MolProbity. The Clashes column lists the number of clashes within the asymmetric unit, whereas Symm-Clashes lists symmetry-related clashes.

Mol	Chain	Non-H	H(model)	H(added)	Clashes	Symm-Clashes
1	A	2869	0	2861	275	0
1	B	2860	0	2848	279	0

Continued on next page...

Continued from previous page...

Mol	Chain	Non-H	H(model)	H(added)	Clashes	Symm-Clashes
2	F	84	0	91	2	0
2	G	84	0	91	5	0
3	A	10	0	0	4	0
3	B	10	0	0	1	0
4	A	24	0	15	7	0
4	B	24	0	15	1	0
All	All	5965	0	5921	554	0

The all-atom clashscore is defined as the number of clashes found per 1000 atoms (including hydrogen atoms). The all-atom clashscore for this structure is 47.

The worst 5 of 554 close contacts within the same asymmetric unit are listed below, sorted by their clash magnitude.

Atom-1	Atom-2	Interatomic distance (Å)	Clash overlap (Å)
1:B:175:THR:HG21	1:B:343:ASP:H	1.27	0.99
1:B:34:SER:HB3	1:B:39:ILE:HG23	1.44	0.98
1:A:72:ARG:HH21	1:A:343:ASP:HA	1.33	0.94
1:A:208:LEU:HD12	1:A:301:MET:HG2	1.53	0.89
1:A:286:HIS:HE1	1:A:288:LYS:HB2	1.39	0.88

There are no symmetry-related clashes.

5.3 Torsion angles [i](#)

5.3.1 Protein backbone [i](#)

In the following table, the Percentiles column shows the percent Ramachandran outliers of the chain as a percentile score with respect to all X-ray entries followed by that with respect to entries of similar resolution.

The Analysed column shows the number of residues for which the backbone conformation was analysed, and the total number of residues.

Mol	Chain	Analysed	Favoured	Allowed	Outliers	Percentiles
1	A	355/370 (96%)	253 (71%)	71 (20%)	31 (9%)	0 3
1	B	355/370 (96%)	249 (70%)	82 (23%)	24 (7%)	1 7
2	F	8/11 (73%)	8 (100%)	0	0	100 100
2	G	8/11 (73%)	8 (100%)	0	0	100 100
All	All	726/762 (95%)	518 (71%)	153 (21%)	55 (8%)	1 5

5 of 55 Ramachandran outliers are listed below:

Mol	Chain	Res	Type
1	A	62	GLN
1	A	102	GLN
1	A	176	ALA
1	A	189	ARG
1	A	190	TYR

5.3.2 Protein sidechains [i](#)

In the following table, the Percentiles column shows the percent sidechain outliers of the chain as a percentile score with respect to all X-ray entries followed by that with respect to entries of similar resolution.

The Analysed column shows the number of residues for which the sidechain conformation was analysed, and the total number of residues.

Mol	Chain	Analysed	Rotameric	Outliers	Percentiles	
1	A	316/334 (95%)	289 (92%)	27 (8%)	10	37
1	B	315/334 (94%)	288 (91%)	27 (9%)	10	36
2	F	10/11 (91%)	10 (100%)	0	100	100
2	G	10/11 (91%)	8 (80%)	2 (20%)	1	7
All	All	651/690 (94%)	595 (91%)	56 (9%)	10	36

5 of 56 residues with a non-rotameric sidechain are listed below:

Mol	Chain	Res	Type
1	B	9	ASN
2	G	559	THR
1	B	132	LEU
2	G	558	THR
1	B	310	ILE

Sometimes sidechains can be flipped to improve hydrogen bonding and reduce clashes. 5 of 31 such sidechains are listed below:

Mol	Chain	Res	Type
1	A	317	GLN
1	B	286	HIS
1	B	8	ASN
1	B	317	GLN
1	B	149	HIS

5.3.3 RNA [i](#)

There are no RNA molecules in this entry.

5.4 Non-standard residues in protein, DNA, RNA chains [i](#)

There are no non-standard protein/DNA/RNA residues in this entry.

5.5 Carbohydrates [i](#)

There are no oligosaccharides in this entry.

5.6 Ligand geometry [i](#)

6 ligands are modelled in this entry.

In the following table, the Counts columns list the number of bonds (or angles) for which Mogul statistics could be retrieved, the number of bonds (or angles) that are observed in the model and the number of bonds (or angles) that are defined in the Chemical Component Dictionary. The Link column lists molecule types, if any, to which the group is linked. The Z score for a bond length (or angle) is the number of standard deviations the observed value is removed from the expected value. A bond length (or angle) with $|Z| > 2$ is considered an outlier worth inspection. RMSZ is the root-mean-square of all Z scores of the bond lengths (or angles).

Mol	Type	Chain	Res	Link	Bond lengths			Bond angles		
					Counts	RMSZ	# Z > 2	Counts	RMSZ	# Z > 2
3	SO4	B	801	-	4,4,4	0.59	0	6,6,6	0.08	0
3	SO4	A	701	-	4,4,4	0.43	0	6,6,6	0.11	0
4	859	A	901	-	26,26,26	1.33	3 (11%)	33,35,35	1.62	8 (24%)
4	859	B	902	-	26,26,26	1.34	4 (15%)	33,35,35	1.61	6 (18%)
3	SO4	B	802	-	4,4,4	0.31	0	6,6,6	0.15	0
3	SO4	A	702	-	4,4,4	0.43	0	6,6,6	0.08	0

In the following table, the Chirals column lists the number of chiral outliers, the number of chiral centers analysed, the number of these observed in the model and the number defined in the Chemical Component Dictionary. Similar counts are reported in the Torsion and Rings columns. '-' means no outliers of that kind were identified.

Mol	Type	Chain	Res	Link	Chirals	Torsions	Rings
4	859	A	901	-	-	0/12/12/12	0/3/3/3
4	859	B	902	-	-	0/12/12/12	0/3/3/3

The worst 5 of 7 bond length outliers are listed below:

Mol	Chain	Res	Type	Atoms	Z	Observed(Å)	Ideal(Å)
4	B	902	859	C9-C8	3.23	1.46	1.41
4	A	901	859	C20-C15	2.71	1.43	1.39
4	B	902	859	C13-C8	2.70	1.44	1.39
4	A	901	859	C13-C8	2.65	1.44	1.39
4	A	901	859	C17-C18	2.15	1.42	1.38

The worst 5 of 14 bond angle outliers are listed below:

Mol	Chain	Res	Type	Atoms	Z	Observed(°)	Ideal(°)
4	A	901	859	N6-C1-N2	-4.34	122.23	126.42
4	B	902	859	N6-C1-N2	-4.27	122.29	126.42
4	B	902	859	O24-C22-C9	3.99	124.95	120.24
4	A	901	859	C15-C20-C19	3.13	122.20	119.56
4	A	901	859	C5-N6-C1	2.92	117.86	115.42

There are no chirality outliers.

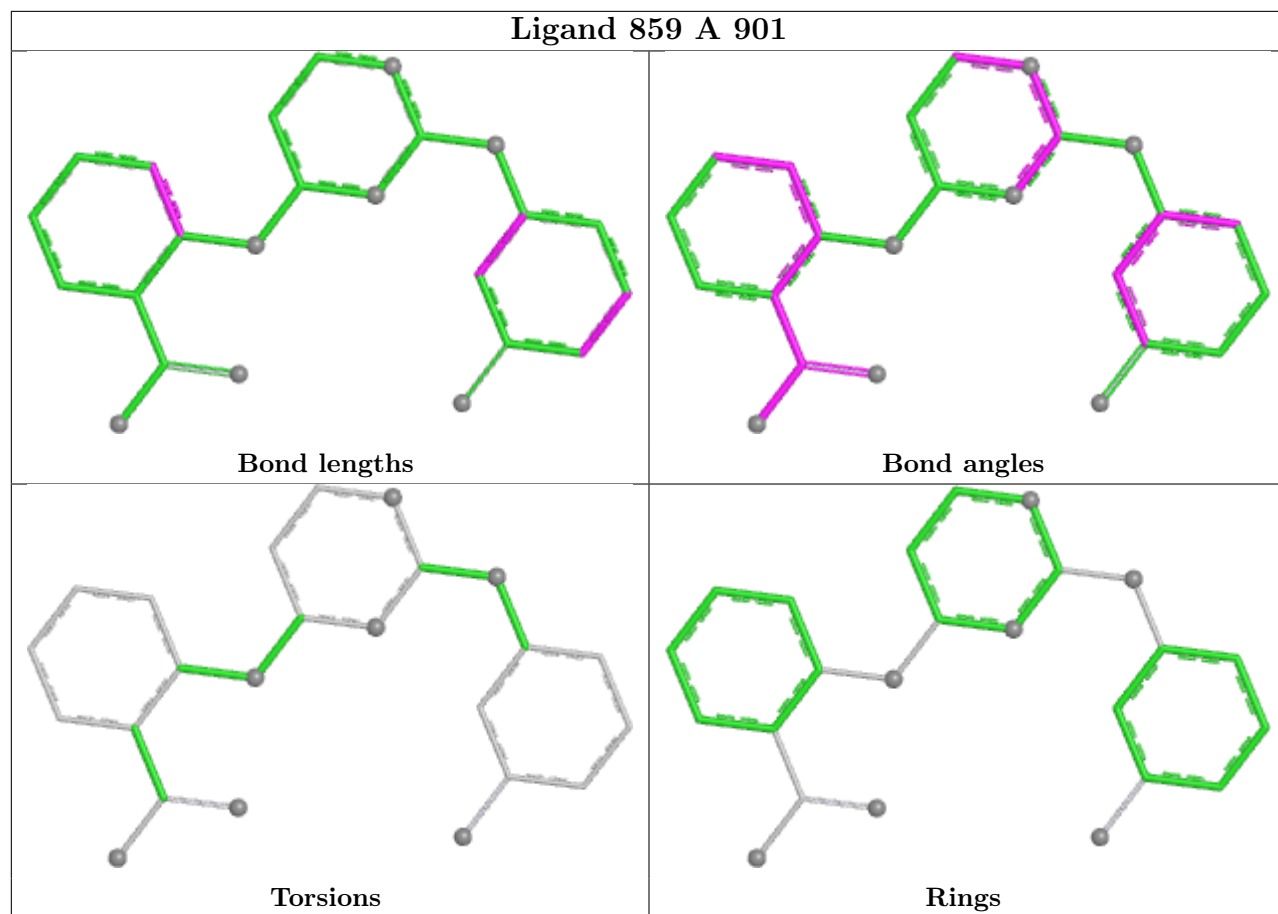
There are no torsion outliers.

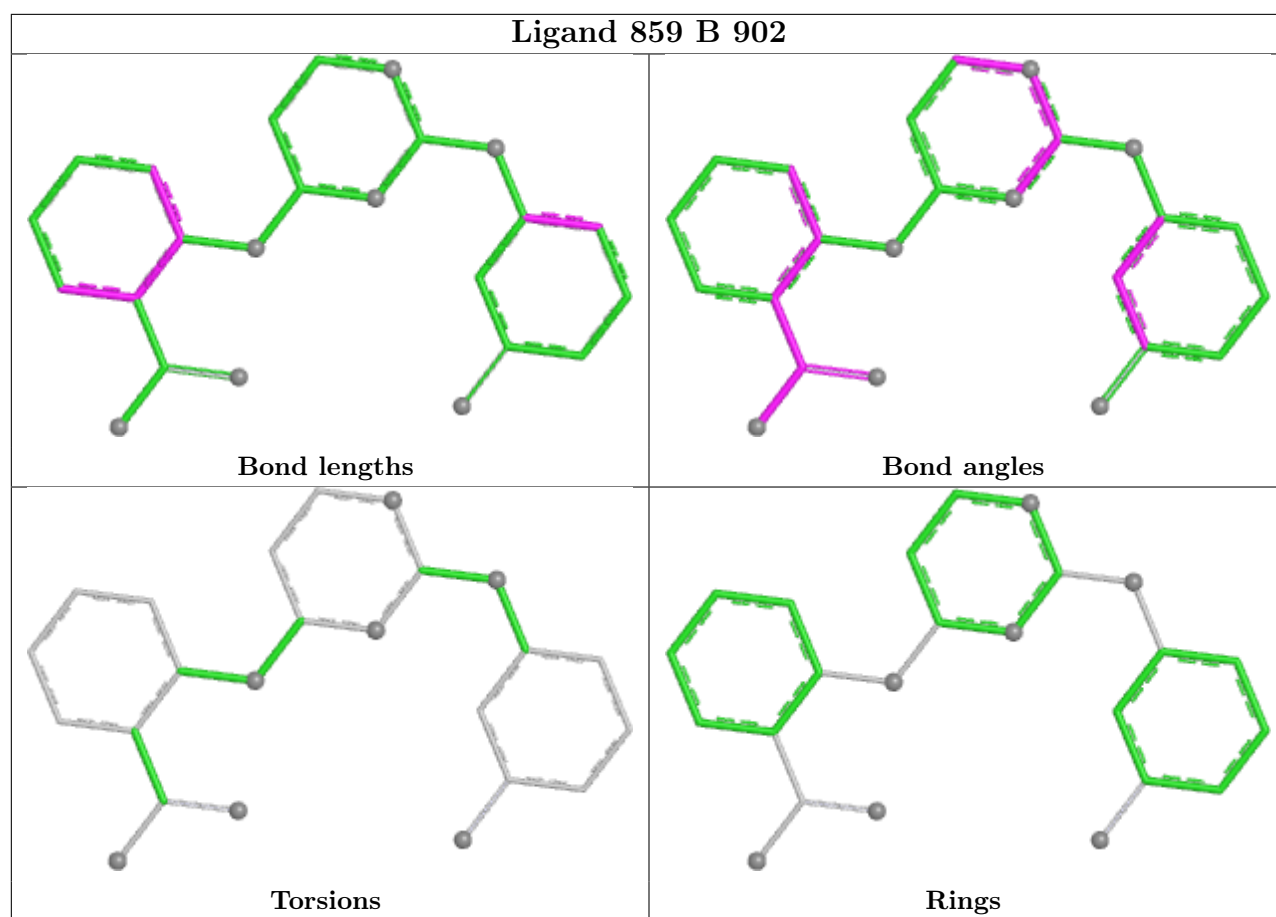
There are no ring outliers.

4 monomers are involved in 13 short contacts:

Mol	Chain	Res	Type	Clashes	Symm-Clashes
3	B	801	SO4	1	0
3	A	701	SO4	4	0
4	A	901	859	7	0
4	B	902	859	1	0

The following is a two-dimensional graphical depiction of Mogul quality analysis of bond lengths, bond angles, torsion angles, and ring geometry for all instances of the Ligand of Interest. In addition, ligands with molecular weight > 250 and outliers as shown on the validation Tables will also be included. For torsion angles, if less than 5% of the Mogul distribution of torsion angles is within 10 degrees of the torsion angle in question, then that torsion angle is considered an outlier. Any bond that is central to one or more torsion angles identified as an outlier by Mogul will be highlighted in the graph. For rings, the root-mean-square deviation (RMSD) between the ring in question and similar rings identified by Mogul is calculated over all ring torsion angles. If the average RMSD is greater than 60 degrees and the minimal RMSD between the ring in question and any Mogul-identified rings is also greater than 60 degrees, then that ring is considered an outlier. The outliers are highlighted in purple. The color gray indicates Mogul did not find sufficient equivalents in the CSD to analyse the geometry.





5.7 Other polymers [i](#)

There are no such residues in this entry.

5.8 Polymer linkage issues [i](#)

There are no chain breaks in this entry.

6 Fit of model and data [i](#)

6.1 Protein, DNA and RNA chains [i](#)

EDS was not executed - this section is therefore empty.

6.2 Non-standard residues in protein, DNA, RNA chains [i](#)

EDS was not executed - this section is therefore empty.

6.3 Carbohydrates [i](#)

EDS was not executed - this section is therefore empty.

6.4 Ligands [i](#)

EDS was not executed - this section is therefore empty.

6.5 Other polymers [i](#)

EDS was not executed - this section is therefore empty.