



wwPDB X-ray Structure Validation Summary Report ⓘ

Mar 8, 2026 – 04:39 AM UTC

PDB ID : 6OC3 / pdb_00006oc3
Title : Crystal structure of FluA-20 Fab in complex with the head domain of H1
(A/Solomon Islands/3/2006)
Authors : Wilson, I.A.; Lang, S.
Deposited on : 2019-03-21
Resolution : 2.85 Å (reported)

This is a wwPDB X-ray Structure Validation Summary Report for a publicly released PDB entry.

We welcome your comments at validation@mail.wwpdb.org

A user guide is available at

<https://www.wwpdb.org/validation/2017/XrayValidationReportHelp>

with specific help available everywhere you see the ⓘ symbol.

The types of validation reports are described at

<http://www.wwpdb.org/validation/2017/FAQs#types>.

The following versions of software and data (see [references ⓘ](#)) were used in the production of this report:

MolProbity : 4-5-2 with Phenix2.0
Mogul : 2022.3.0, CSD as543be (2022)
Xtriage (Phenix) : 2.0
EDS : 3.0
Percentile statistics : 20250101.v01 (using entries in the PDB archive January 1st 2025)
CCP4 : 9.0.010 (Gargrove)
Density-Fitness : 1.0.12
Ideal geometry (proteins) : Engh & Huber (2001)
Ideal geometry (DNA, RNA) : Parkinson et al. (1996)
Validation Pipeline (wwPDB-VP) : 2.49

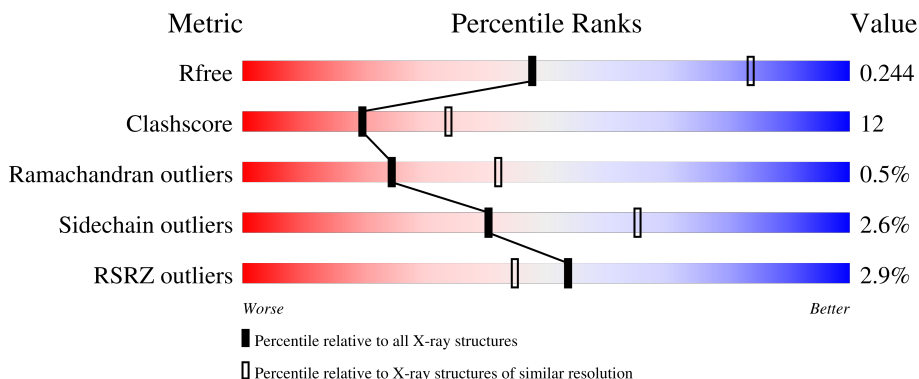
1 Overall quality at a glance

The following experimental techniques were used to determine the structure:

X-RAY DIFFRACTION

The reported resolution of this entry is 2.85 Å.

Percentile scores (ranging between 0-100) for global validation metrics of the entry are shown in the following graphic. The table shows the number of entries on which the scores are based.




Metric	Whole archive (#Entries)	Similar resolution (#Entries, resolution range(Å))
R_{free}	180053	1407 (2.88-2.84)
Clashscore	190562	1446 (2.88-2.84)
Ramachandran outliers	187476	1406 (2.88-2.84)
Sidechain outliers	187428	1407 (2.88-2.84)
RSRZ outliers	180081	1408 (2.88-2.84)

The table below summarises the geometric issues observed across the polymeric chains and their fit to the electron density. The red, orange, yellow and green segments of the lower bar indicate the fraction of residues that contain outliers for ≥ 3 , 2, 1 and 0 types of geometric quality criteria respectively. A grey segment represents the fraction of residues that are not modelled. The numeric value for each fraction is indicated below the corresponding segment, with a dot representing fractions $\leq 5\%$. The upper red bar (where present) indicates the fraction of residues that have poor fit to the electron density. The numeric value is given above the bar.

Mol	Chain	Length	Quality of chain
1	A	235	 2% 76% 18% • 5%
1	C	235	 3% 69% 23% •• 6%
2	B	214	 2% 77% 21% •
2	D	214	 2% 76% 23%
3	E	227	 3% 72% 19% • 7%

Continued on next page...

Continued from previous page...

Mol	Chain	Length	Quality of chain
3	F	227	 <p>A horizontal bar chart representing the quality of chain. The bar is divided into four segments: a small red segment at the beginning labeled '4%', a large green segment labeled '68%', a yellow segment labeled '22%', and a small grey segment at the end labeled '7%'.</p>

2 Entry composition [i](#)

There are 4 unique types of molecules in this entry. The entry contains 10038 atoms, of which 0 are hydrogens and 0 are deuteriums.

In the tables below, the ZeroOcc column contains the number of atoms modelled with zero occupancy, the AltConf column contains the number of residues with at least one atom in alternate conformation and the Trace column contains the number of residues modelled with at most 2 atoms.

- Molecule 1 is a protein called Heavy chain of FluA-20 Fab.

Mol	Chain	Residues	Atoms					ZeroOcc	AltConf	Trace
			Total	C	N	O	S			
1	A	224	Total 1674	C 1056	N 275	O 336	S 7	0	0	0
1	C	221	Total 1656	C 1047	N 272	O 330	S 7	0	0	0

- Molecule 2 is a protein called Light chain of FluA-20 Fab.

Mol	Chain	Residues	Atoms					ZeroOcc	AltConf	Trace
			Total	C	N	O	S			
2	B	213	Total 1646	C 1031	N 281	O 329	S 5	0	0	0
2	D	213	Total 1646	C 1031	N 281	O 329	S 5	0	0	0

- Molecule 3 is a protein called Hemagglutinin.

Mol	Chain	Residues	Atoms					ZeroOcc	AltConf	Trace
			Total	C	N	O	S			
3	E	212	Total 1701	C 1084	N 293	O 320	S 4	0	0	0
3	F	212	Total 1701	C 1084	N 293	O 320	S 4	0	0	0

There are 30 discrepancies between the modelled and reference sequences:

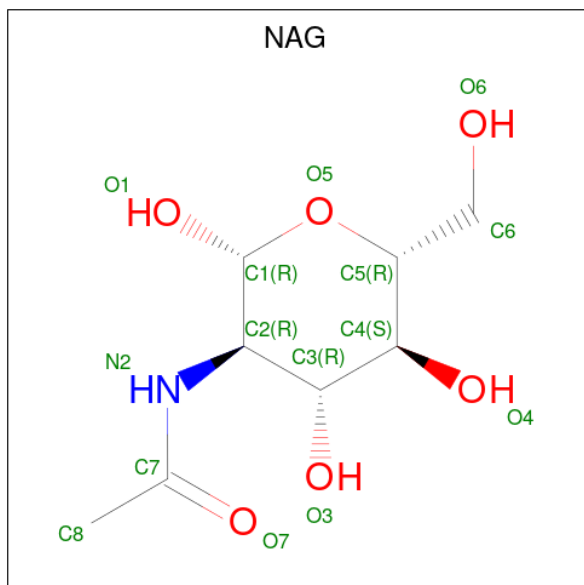
Chain	Residue	Modelled	Actual	Comment	Reference
E	264	SER	-	expression tag	UNP A7Y8I1
E	265	GLY	-	expression tag	UNP A7Y8I1
E	266	LEU	-	expression tag	UNP A7Y8I1
E	267	VAL	-	expression tag	UNP A7Y8I1
E	268	PRO	-	expression tag	UNP A7Y8I1
E	269	ARG	-	expression tag	UNP A7Y8I1
E	270	GLY	-	expression tag	UNP A7Y8I1
E	271	SER	-	expression tag	UNP A7Y8I1

Continued on next page...

Continued from previous page...

Chain	Residue	Modelled	Actual	Comment	Reference
E	272	GLY	-	expression tag	UNP A7Y8I1
E	273	HIS	-	expression tag	UNP A7Y8I1
E	274	HIS	-	expression tag	UNP A7Y8I1
E	275	HIS	-	expression tag	UNP A7Y8I1
E	276	HIS	-	expression tag	UNP A7Y8I1
E	277	HIS	-	expression tag	UNP A7Y8I1
E	278	HIS	-	expression tag	UNP A7Y8I1
F	264	SER	-	expression tag	UNP A7Y8I1
F	265	GLY	-	expression tag	UNP A7Y8I1
F	266	LEU	-	expression tag	UNP A7Y8I1
F	267	VAL	-	expression tag	UNP A7Y8I1
F	268	PRO	-	expression tag	UNP A7Y8I1
F	269	ARG	-	expression tag	UNP A7Y8I1
F	270	GLY	-	expression tag	UNP A7Y8I1
F	271	SER	-	expression tag	UNP A7Y8I1
F	272	GLY	-	expression tag	UNP A7Y8I1
F	273	HIS	-	expression tag	UNP A7Y8I1
F	274	HIS	-	expression tag	UNP A7Y8I1
F	275	HIS	-	expression tag	UNP A7Y8I1
F	276	HIS	-	expression tag	UNP A7Y8I1
F	277	HIS	-	expression tag	UNP A7Y8I1
F	278	HIS	-	expression tag	UNP A7Y8I1

- Molecule 4 is 2-acetamido-2-deoxy-beta-D-glucopyranose (CCD ID: NAG) (formula: $C_8H_{15}NO_6$).

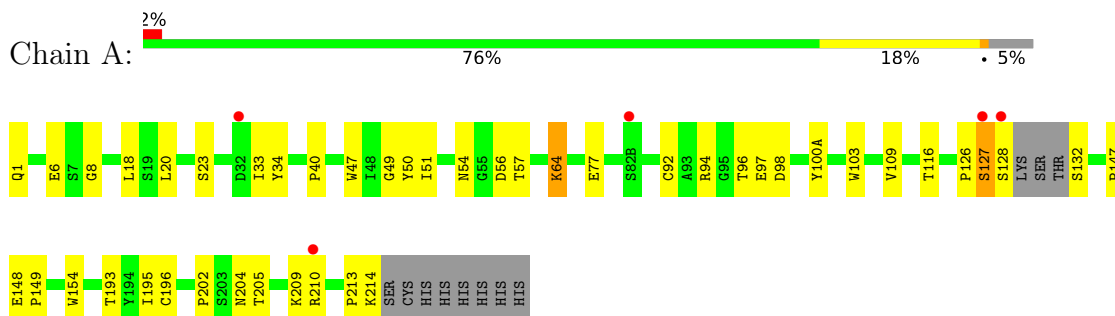


Mol	Chain	Residues	Atoms				ZeroOcc	AltConf
			Total	C	N	O		
4	E	1	14	8	1	5	14	0

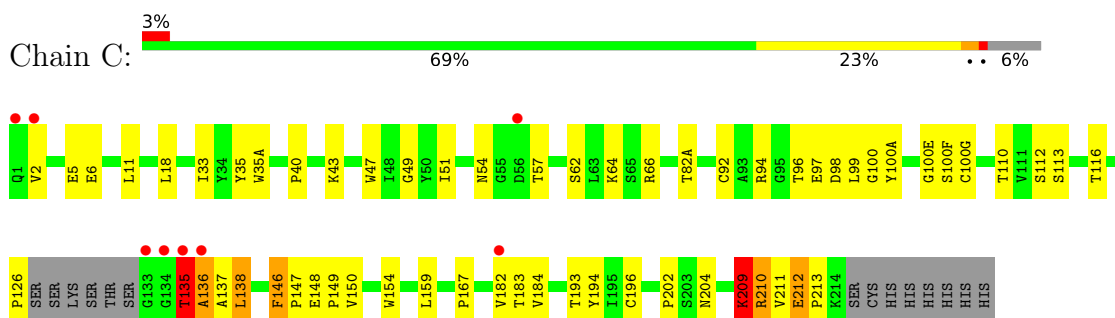
3 Residue-property plots [i](#)

These plots are drawn for all protein, RNA, DNA and oligosaccharide chains in the entry. The first graphic for a chain summarises the proportions of the various outlier classes displayed in the second graphic. The second graphic shows the sequence view annotated by issues in geometry and electron density. Residues are color-coded according to the number of geometric quality criteria for which they contain at least one outlier: green = 0, yellow = 1, orange = 2 and red = 3 or more. A red dot above a residue indicates a poor fit to the electron density ($RSRZ > 2$). Stretches of 2 or more consecutive residues without any outlier are shown as a green connector. Residues present in the sample, but not in the model, are shown in grey.

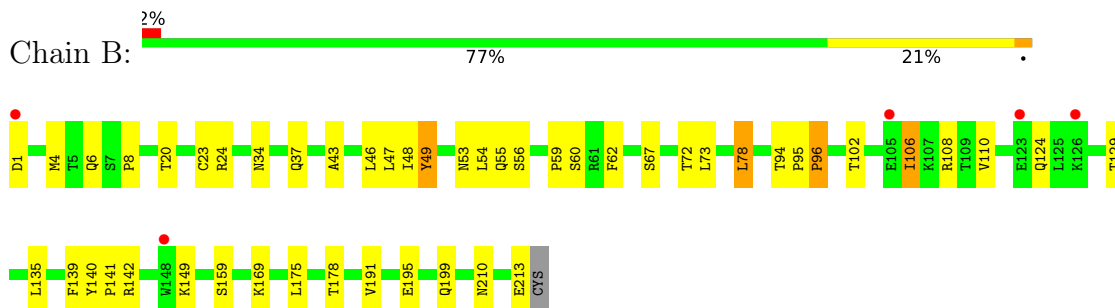
- Molecule 1: Heavy chain of FluA-20 Fab



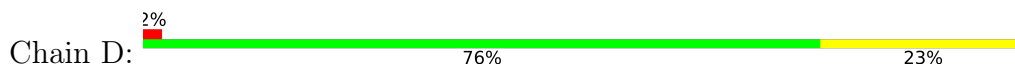
- Molecule 1: Heavy chain of FluA-20 Fab

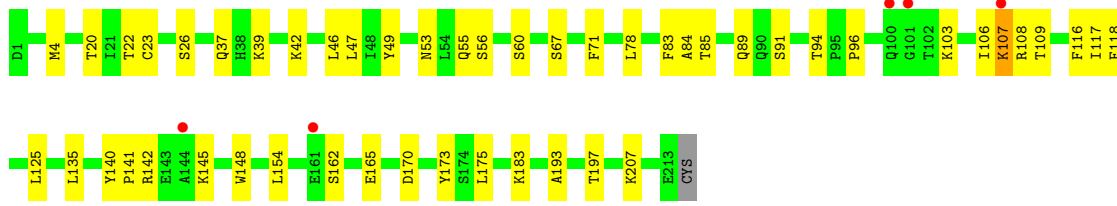


- Molecule 2: Light chain of FluA-20 Fab

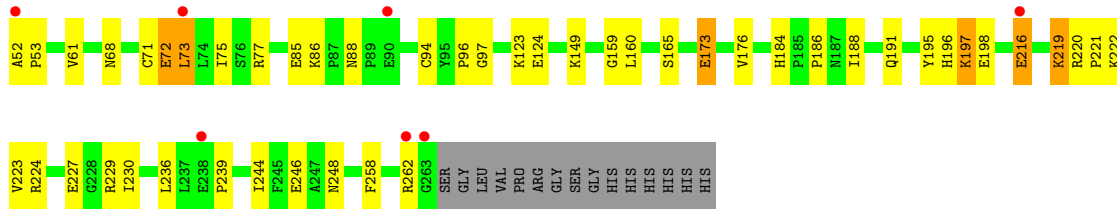


- Molecule 2: Light chain of FluA-20 Fab

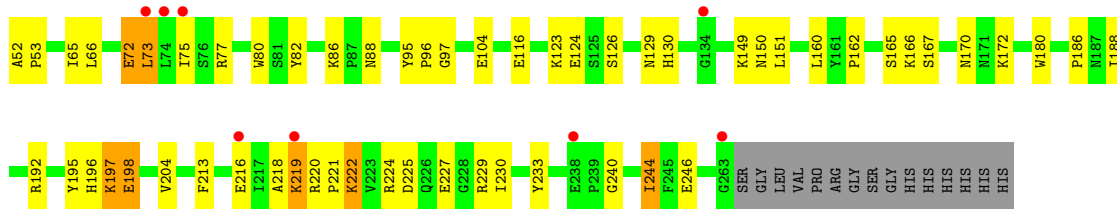




• Molecule 3: Hemagglutinin



• Molecule 3: Hemagglutinin



4 Data and refinement statistics

Property	Value	Source
Space group	P 21 21 21	Depositor
Cell constants a, b, c, α , β , γ	100.47Å 109.78Å 146.39Å 90.00° 90.00° 90.00°	Depositor
Resolution (Å)	48.17 – 2.85 48.17 – 2.85	Depositor EDS
% Data completeness (in resolution range)	95.5 (48.17-2.85) 95.6 (48.17-2.85)	Depositor EDS
R_{merge}	(Not available)	Depositor
R_{sym}	0.13	Depositor
$\langle I/\sigma(I) \rangle$ ¹	2.50 (at 2.86Å)	Xtrriage
Refinement program	PHENIX (1.12_2829: ???)	Depositor
R, R_{free}	0.237 , 0.257 (Not available) , 0.244	Depositor DCC
R_{free} test set	1791 reflections (4.65%)	wwPDB-VP
Wilson B-factor (Å ²)	65.1	Xtrriage
Anisotropy	0.949	Xtrriage
Bulk solvent k_{sol} (e/Å ³), B_{sol} (Å ²)	0.34 , 39.0	EDS
L-test for twinning ²	$\langle L \rangle = 0.48$, $\langle L^2 \rangle = 0.31$	Xtrriage
Estimated twinning fraction	No twinning to report.	Xtrriage
F_o, F_c correlation	0.92	EDS
Total number of atoms	10038	wwPDB-VP
Average B, all atoms (Å ²)	73.0	wwPDB-VP

Xtrriage's analysis on translational NCS is as follows: *The largest off-origin peak in the Patterson function is 3.42% of the height of the origin peak. No significant pseudotranslation is detected.*

¹Intensities estimated from amplitudes.

²Theoretical values of $\langle |L| \rangle$, $\langle L^2 \rangle$ for acentric reflections are 0.5, 0.333 respectively for untwinned datasets, and 0.375, 0.2 for perfectly twinned datasets.

5 Model quality i

5.1 Standard geometry i

Bond lengths and bond angles in the following residue types are not validated in this section: NAG

The Z score for a bond length (or angle) is the number of standard deviations the observed value is removed from the expected value. A bond length (or angle) with $|Z| > 5$ is considered an outlier worth inspection. RMSZ is the root-mean-square of all Z scores of the bond lengths (or angles).

Mol	Chain	Bond lengths		Bond angles	
		RMSZ	# Z >5	RMSZ	# Z >5
1	A	0.73	2/1716 (0.1%)	1.02	4/2346 (0.2%)
1	C	0.82	9/1698 (0.5%)	1.15	12/2322 (0.5%)
2	B	0.82	5/1683 (0.3%)	0.97	3/2285 (0.1%)
2	D	0.46	0/1683	0.76	1/2285 (0.0%)
3	E	0.51	0/1753	0.91	2/2385 (0.1%)
3	F	0.52	1/1753 (0.1%)	0.90	1/2385 (0.0%)
All	All	0.66	17/10286 (0.2%)	0.96	23/14008 (0.2%)

Chiral center outliers are detected by calculating the chiral volume of a chiral center and verifying if the center is modelled as a planar moiety or with the opposite hand. A planarity outlier is detected by checking planarity of atoms in a peptide group, atoms in a mainchain group or atoms of a sidechain that are expected to be planar.

Mol	Chain	#Chirality outliers	#Planarity outliers
1	C	0	1
2	B	0	1
2	D	0	1
3	E	0	2
3	F	0	2
All	All	0	7

The worst 5 of 17 bond length outliers are listed below:

Mol	Chain	Res	Type	Atoms	Z	Observed(Å)	Ideal(Å)
1	C	100	GLY	C-N	8.12	1.52	1.34
1	A	40	PRO	CA-C	7.09	1.55	1.51
2	B	94	THR	C-O	-6.92	1.14	1.24
1	C	212	GLU	CA-C	-6.43	1.46	1.52
2	B	139	PHE	C-O	-6.26	1.16	1.23

The worst 5 of 23 bond angle outliers are listed below:

Mol	Chain	Res	Type	Atoms	Z	Observed(°)	Ideal(°)
1	C	212	GLU	CA-C-N	18.39	142.83	119.84
1	C	212	GLU	C-N-CA	18.39	142.83	119.84
1	C	100	GLY	O-C-N	11.16	140.56	122.70
1	C	100	GLY	CA-C-N	-10.65	93.78	117.20
1	C	99	LEU	CA-C-N	-7.08	107.52	121.41

There are no chirality outliers.

5 of 7 planarity outliers are listed below:

Mol	Chain	Res	Type	Group
2	B	106	ILE	Mainchain
1	C	2	VAL	Peptide
2	D	106	ILE	Mainchain
3	E	72	GLU	Peptide
3	E	73	LEU	Peptide

5.2 Too-close contacts [i](#)

In the following table, the Non-H and H(model) columns list the number of non-hydrogen atoms and hydrogen atoms in the chain respectively. The H(added) column lists the number of hydrogen atoms added and optimized by MolProbity. The Clashes column lists the number of clashes within the asymmetric unit, whereas Symm-Clashes lists symmetry-related clashes.

Mol	Chain	Non-H	H(model)	H(added)	Clashes	Symm-Clashes
1	A	1674	0	1628	43	1
1	C	1656	0	1613	63	1
2	B	1646	0	1608	30	1
2	D	1646	0	1608	44	0
3	E	1701	0	1621	47	0
3	F	1701	0	1622	59	1
4	E	14	0	13	0	0
All	All	10038	0	9713	227	2

The all-atom clashscore is defined as the number of clashes found per 1000 atoms (including hydrogen atoms). The all-atom clashscore for this structure is 12.

The worst 5 of 227 close contacts within the same asymmetric unit are listed below, sorted by their clash magnitude.

Atom-1	Atom-2	Interatomic distance (Å)	Clash overlap (Å)
3:E:159:GLY:O	3:E:196:HIS:CD2	1.82	1.31

Continued on next page...

Continued from previous page...

Atom-1	Atom-2	Interatomic distance (Å)	Clash overlap (Å)
3:F:192:ARG:NE	3:F:198:GLU:OE2	1.74	1.19
3:E:197:LYS:HD2	3:E:248:ASN:O	1.51	1.09
1:A:33:ILE:HD13	3:F:216:GLU:OE1	1.54	1.05
1:C:137:ALA:HB1	1:C:182:VAL:O	1.61	1.00

All (2) symmetry-related close contacts are listed below. The label for Atom-2 includes the symmetry operator and encoded unit-cell translations to be applied.

Atom-1	Atom-2	Interatomic distance (Å)	Clash overlap (Å)
1:A:205:THR:OG1	1:C:209:LYS:NZ[2_445]	1.45	0.75
2:B:24:ARG:NH2	3:F:198:GLU:OE1[4_545]	2.02	0.18

5.3 Torsion angles [i](#)

5.3.1 Protein backbone [i](#)

In the following table, the Percentiles column shows the percent Ramachandran outliers of the chain as a percentile score with respect to all X-ray entries followed by that with respect to entries of similar resolution.

The Analysed column shows the number of residues for which the backbone conformation was analysed, and the total number of residues.

Mol	Chain	Analysed	Favoured	Allowed	Outliers	Percentiles	
1	A	220/235 (94%)	214 (97%)	4 (2%)	2 (1%)	14	28
1	C	217/235 (92%)	208 (96%)	7 (3%)	2 (1%)	14	28
2	B	211/214 (99%)	205 (97%)	6 (3%)	0	100	100
2	D	211/214 (99%)	205 (97%)	6 (3%)	0	100	100
3	E	210/227 (92%)	200 (95%)	9 (4%)	1 (0%)	24	42
3	F	210/227 (92%)	198 (94%)	11 (5%)	1 (0%)	24	42
All	All	1279/1352 (95%)	1230 (96%)	43 (3%)	6 (0%)	24	42

5 of 6 Ramachandran outliers are listed below:

Mol	Chain	Res	Type
3	E	73	LEU
3	F	73	LEU
1	A	127	SER

Continued on next page...

Continued from previous page...

Mol	Chain	Res	Type
1	C	135	THR
1	A	149	PRO

5.3.2 Protein sidechains [i](#)

In the following table, the Percentiles column shows the percent sidechain outliers of the chain as a percentile score with respect to all X-ray entries followed by that with respect to entries of similar resolution.

The Analysed column shows the number of residues for which the sidechain conformation was analysed, and the total number of residues.

Mol	Chain	Analysed	Rotameric	Outliers	Percentiles
1	A	194/205 (95%)	193 (100%)	1 (0%)	81 90
1	C	191/205 (93%)	183 (96%)	8 (4%)	26 51
2	B	189/190 (100%)	186 (98%)	3 (2%)	55 76
2	D	189/190 (100%)	184 (97%)	5 (3%)	40 65
3	E	185/197 (94%)	179 (97%)	6 (3%)	34 59
3	F	185/197 (94%)	179 (97%)	6 (3%)	34 59
All	All	1133/1184 (96%)	1104 (97%)	29 (3%)	40 65

5 of 29 residues with a non-rotameric sidechain are listed below:

Mol	Chain	Res	Type
2	D	78	LEU
3	F	219	LYS
3	E	75	ILE
3	F	188	ILE
2	D	135	LEU

Sometimes sidechains can be flipped to improve hydrogen bonding and reduce clashes. 5 of 22 such sidechains are listed below:

Mol	Chain	Res	Type
3	E	88	ASN
3	F	58	ASN
3	E	226	GLN
3	F	88	ASN
2	B	79	GLN

5.3.3 RNA [i](#)

There are no RNA molecules in this entry.

5.4 Non-standard residues in protein, DNA, RNA chains [i](#)

There are no non-standard protein/DNA/RNA residues in this entry.

5.5 Carbohydrates [i](#)

There are no oligosaccharides in this entry.

5.6 Ligand geometry [i](#)

1 ligand is modelled in this entry.

In the following table, the Counts columns list the number of bonds (or angles) for which Mogul statistics could be retrieved, the number of bonds (or angles) that are observed in the model and the number of bonds (or angles) that are defined in the Chemical Component Dictionary. The Link column lists molecule types, if any, to which the group is linked. The Z score for a bond length (or angle) is the number of standard deviations the observed value is removed from the expected value. A bond length (or angle) with $|Z| > 2$ is considered an outlier worth inspection. RMSZ is the root-mean-square of all Z scores of the bond lengths (or angles).

Mol	Type	Chain	Res	Link	Bond lengths			Bond angles		
					Counts	RMSZ	$\# Z > 2$	Counts	RMSZ	$\# Z > 2$
4	NAG	E	301	3	14,14,15	0.29	0	17,19,21	0.57	0

In the following table, the Chirals column lists the number of chiral outliers, the number of chiral centers analysed, the number of these observed in the model and the number defined in the Chemical Component Dictionary. Similar counts are reported in the Torsion and Rings columns. '-' means no outliers of that kind were identified.

Mol	Type	Chain	Res	Link	Chirals	Torsions	Rings
4	NAG	E	301	3	-	2/6/23/26	0/1/1/1

There are no bond length outliers.

There are no bond angle outliers.

There are no chirality outliers.

All (2) torsion outliers are listed below:

Mol	Chain	Res	Type	Atoms
4	E	301	NAG	O5-C5-C6-O6
4	E	301	NAG	C4-C5-C6-O6

There are no ring outliers.

No monomer is involved in short contacts.

5.7 Other polymers [i](#)

There are no such residues in this entry.

5.8 Polymer linkage issues [i](#)

There are no chain breaks in this entry.

6 Fit of model and data [i](#)

6.1 Protein, DNA and RNA chains [i](#)

In the following table, the column labelled ‘#RSRZ > 2’ contains the number (and percentage) of RSRZ outliers, followed by percent RSRZ outliers for the chain as percentile scores relative to all X-ray entries and entries of similar resolution. The OWAB column contains the minimum, median, 95th percentile and maximum values of the occupancy-weighted average B-factor per residue. The column labelled ‘Q < 0.9’ lists the number of (and percentage) of residues with an average occupancy less than 0.9.

Mol	Chain	Analysed	<RSRZ>	#RSRZ>2	OWAB(Å ²)	Q<0.9
1	A	224/235 (95%)	0.15	5 (2%) 62 53	30, 61, 84, 100	0
1	C	221/235 (94%)	0.20	8 (3%) 46 36	42, 66, 93, 114	0
2	B	213/214 (99%)	0.22	5 (2%) 61 52	43, 65, 93, 113	0
2	D	213/214 (99%)	0.32	5 (2%) 61 52	45, 78, 114, 123	0
3	E	212/227 (93%)	0.47	7 (3%) 49 40	50, 76, 105, 117	0
3	F	212/227 (93%)	0.53	8 (3%) 44 35	46, 83, 132, 144	0
All	All	1295/1352 (95%)	0.31	38 (2%) 53 45	30, 70, 110, 144	0

The worst 5 of 38 RSRZ outliers are listed below:

Mol	Chain	Res	Type	RSRZ
1	C	133	GLY	4.0
3	E	263	GLY	3.8
3	E	52	ALA	3.2
1	C	136	ALA	3.1
3	E	90	GLU	3.1

6.2 Non-standard residues in protein, DNA, RNA chains [i](#)

There are no non-standard protein/DNA/RNA residues in this entry.

6.3 Carbohydrates [i](#)

There are no oligosaccharides in this entry.

6.4 Ligands [i](#)

In the following table, the Atoms column lists the number of modelled atoms in the group and the number defined in the chemical component dictionary. The B-factors column lists the minimum, median, 95th percentile and maximum values of B factors of atoms in the group. The column labelled 'Q< 0.9' lists the number of atoms with occupancy less than 0.9.

Mol	Type	Chain	Res	Atoms	RSCC	RSR	B-factors(Å ²)	Q<0.9
4	NAG	E	301	14/15	-	-	83,90,93,93	14

6.5 Other polymers [i](#)

There are no such residues in this entry.