



Full wwPDB X-ray Structure Validation Report ⓘ

Apr 25, 2026 – 08:47 AM EDT

PDB ID : 2OLD / pdb_00002old
Title : Bence Jones KWR Protein- Immunoglobulin Light Chain Dimer, P3(2)21
Crystal Form
Authors : Makino, D.L.; Larson, S.B.; McPherson, A.
Deposited on : 2007-01-19
Resolution : 2.60 Å(reported)

This is a Full wwPDB X-ray Structure Validation Report for a publicly released PDB entry.

We welcome your comments at validation@mail.wwpdb.org

A user guide is available at

<https://www.wwpdb.org/validation/2017/XrayValidationReportHelp>

with specific help available everywhere you see the ⓘ symbol.

The types of validation reports are described at

<http://www.wwpdb.org/validation/2017/FAQs#types>.

The following versions of software and data (see [references ⓘ](#)) were used in the production of this report:

MolProbity : 4-5-2 with Phenix2.0
Mogul : 2022.3.0, CSD as543be (2022)
Xtriage (Phenix) : 2.0
EDS : 3.0
Percentile statistics : 20250101.v01 (using entries in the PDB archive January 1st 2025)
CCP4 : 9.0.010 (Gargrove)
Density-Fitness : 1.0.12
Ideal geometry (proteins) : Engh & Huber (2001)
Ideal geometry (DNA, RNA) : Parkinson et al. (1996)
Validation Pipeline (wwPDB-VP) : 2.49

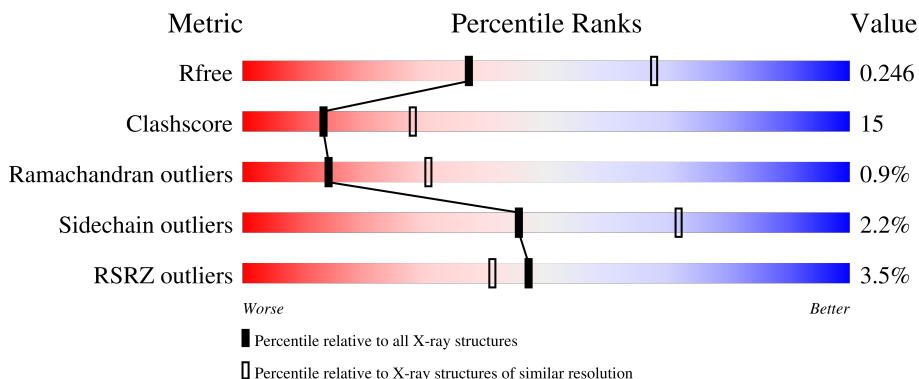
1 Overall quality at a glance

The following experimental techniques were used to determine the structure:

X-RAY DIFFRACTION



The reported resolution of this entry is 2.60 Å.

Percentile scores (ranging between 0-100) for global validation metrics of the entry are shown in the following graphic. The table shows the number of entries on which the scores are based.



Metric	Whole archive (#Entries)	Similar resolution (#Entries, resolution range(Å))
R_{free}	180053	4008 (2.60-2.60)
Clashscore	190562	4347 (2.60-2.60)
Ramachandran outliers	187476	4277 (2.60-2.60)
Sidechain outliers	187428	4277 (2.60-2.60)
RSRZ outliers	180081	4008 (2.60-2.60)

The table below summarises the geometric issues observed across the polymeric chains and their fit to the electron density. The red, orange, yellow and green segments of the lower bar indicate the fraction of residues that contain outliers for ≥ 3 , 2, 1 and 0 types of geometric quality criteria respectively. A grey segment represents the fraction of residues that are not modelled. The numeric value for each fraction is indicated below the corresponding segment, with a dot representing fractions $\leq 5\%$. The upper red bar (where present) indicates the fraction of residues that have poor fit to the electron density. The numeric value is given above the bar.

Mol	Chain	Length	Quality of chain
1	A	217	
1	B	217	

The following table lists non-polymeric compounds, carbohydrate monomers and non-standard residues in protein, DNA, RNA chains that are outliers for geometric or electron-density-fit criteria:

Mol	Type	Chain	Res	Chirality	Geometry	Clashes	Electron density
3	IPH	B	2001	-	X	-	-

2 Entry composition [i](#)

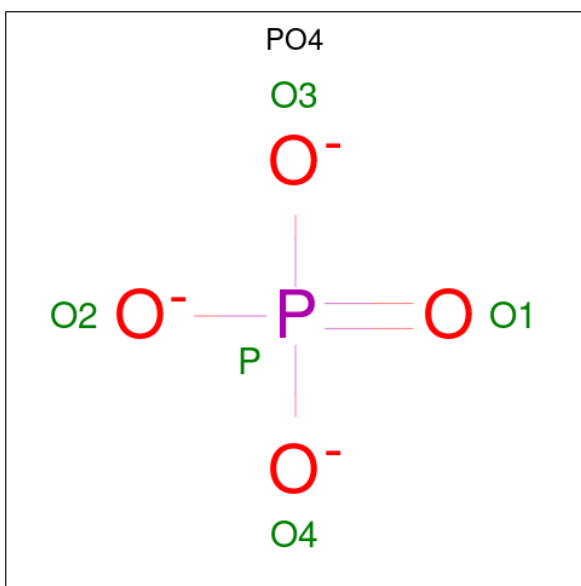
There are 4 unique types of molecules in this entry. The entry contains 3295 atoms, of which 0 are hydrogens and 0 are deuteriums.

In the tables below, the ZeroOcc column contains the number of atoms modelled with zero occupancy, the AltConf column contains the number of residues with at least one atom in alternate conformation and the Trace column contains the number of residues modelled with at most 2 atoms.

- Molecule 1 is a protein called Bence Jones KWR Protein - Immunoglobulin Light Chain.

Mol	Chain	Residues	Atoms					ZeroOcc	AltConf	Trace
			Total	C	N	O	S			
1	A	217	1596	991	267	333	5	0	0	0
1	B	217	1596	991	267	333	5	0	0	0

- Molecule 2 is PHOSPHATE ION (CCD ID: PO4) (formula: O₄P).



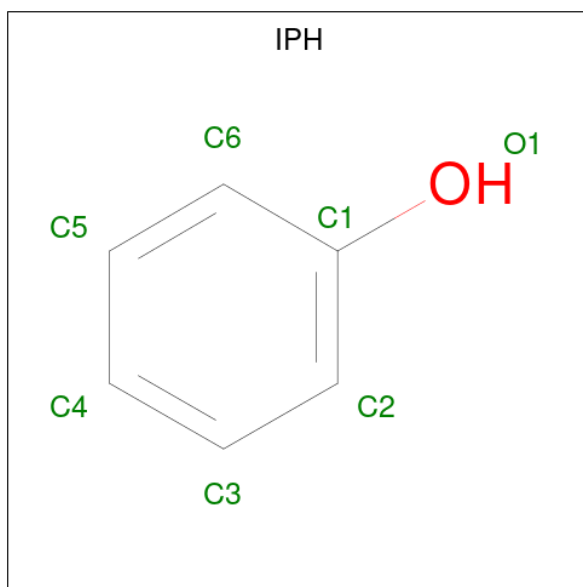
Mol	Chain	Residues	Atoms			ZeroOcc	AltConf
			Total	O	P		
2	A	1	5	4	1	0	0
2	A	1	5	4	1	0	0
2	A	1	5	4	1	0	0
2	A	1	5	4	1	0	0

Continued on next page...

Continued from previous page...

Mol	Chain	Residues	Atoms	ZeroOcc	AltConf
2	A	1	Total O P 5 4 1	0	0
2	B	1	Total O P 5 4 1	0	0

- Molecule 3 is PHENOL (CCD ID: IPH) (formula: C₆H₆O).



Mol	Chain	Residues	Atoms	ZeroOcc	AltConf
3	B	1	Total C O 7 6 1	0	0

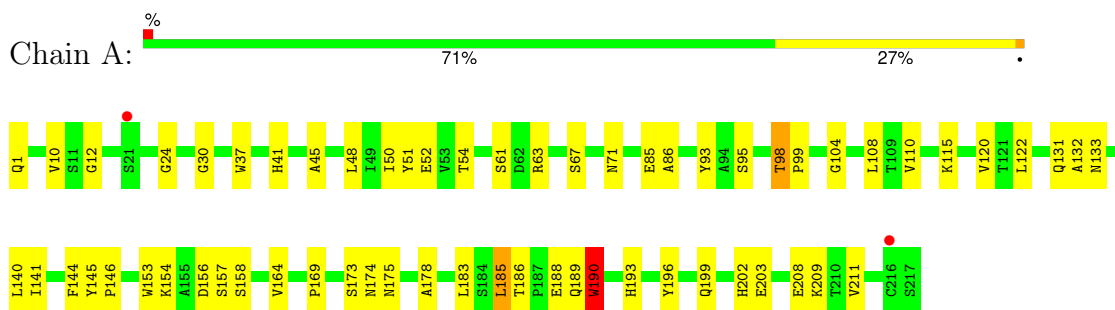
- Molecule 4 is water.

Mol	Chain	Residues	Atoms	ZeroOcc	AltConf
4	A	37	Total O 37 37	0	0
4	B	29	Total O 29 29	0	0

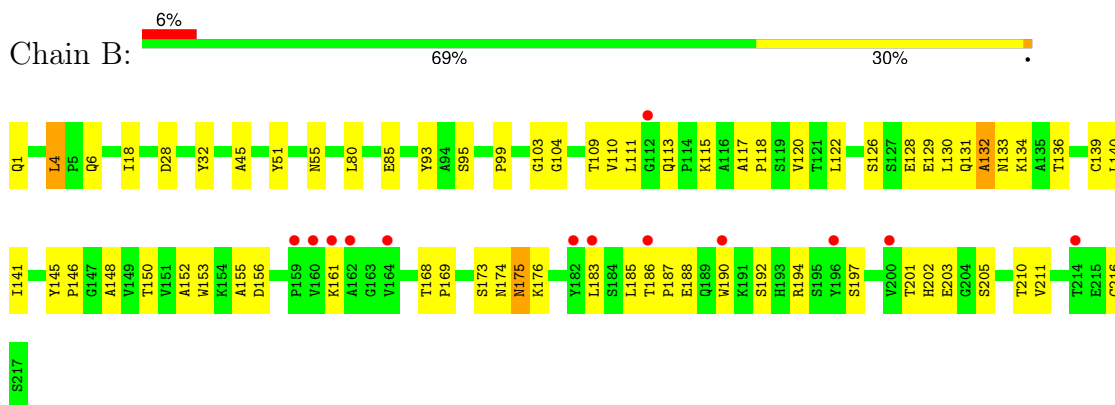
3 Residue-property plots [i](#)

These plots are drawn for all protein, RNA, DNA and oligosaccharide chains in the entry. The first graphic for a chain summarises the proportions of the various outlier classes displayed in the second graphic. The second graphic shows the sequence view annotated by issues in geometry and electron density. Residues are color-coded according to the number of geometric quality criteria for which they contain at least one outlier: green = 0, yellow = 1, orange = 2 and red = 3 or more. A red dot above a residue indicates a poor fit to the electron density ($RSRZ > 2$). Stretches of 2 or more consecutive residues without any outlier are shown as a green connector. Residues present in the sample, but not in the model, are shown in grey.

- Molecule 1: Bence Jones KWR Protein - Immunoglobulin Light Chain



- Molecule 1: Bence Jones KWR Protein - Immunoglobulin Light Chain



4 Data and refinement statistics i

Property	Value	Source
Space group	P 32 2 1	Depositor
Cell constants a, b, c, α , β , γ	155.44Å 155.44Å 46.94Å 90.00° 90.00° 120.00°	Depositor
Resolution (Å)	40.00 – 2.60 40.00 – 2.60	Depositor EDS
% Data completeness (in resolution range)	97.5 (40.00-2.60) 97.6 (40.00-2.60)	Depositor EDS
R_{merge}	(Not available)	Depositor
R_{sym}	0.09	Depositor
$\langle I/\sigma(I) \rangle$ ¹	2.88 (at 2.61Å)	Xtrriage
Refinement program	CNS 1.1	Depositor
R, R_{free}	0.215 , 0.254 0.211 , 0.246	Depositor DCC
R_{free} test set	1943 reflections (9.63%)	wwPDB-VP
Wilson B-factor (Å ²)	56.9	Xtrriage
Anisotropy	0.017	Xtrriage
Bulk solvent k_{sol} (e/Å ³), B_{sol} (Å ²)	0.31 , 38.7	EDS
L-test for twinning ²	$\langle L \rangle = 0.49$, $\langle L^2 \rangle = 0.32$	Xtrriage
Estimated twinning fraction	0.038 for -h,-k,l	Xtrriage
F_o, F_c correlation	0.94	EDS
Total number of atoms	3295	wwPDB-VP
Average B, all atoms (Å ²)	65.0	wwPDB-VP

Xtrriage's analysis on translational NCS is as follows: *The largest off-origin peak in the Patterson function is 3.77% of the height of the origin peak. No significant pseudotranslation is detected.*

¹Intensities estimated from amplitudes.

²Theoretical values of $\langle |L| \rangle$, $\langle L^2 \rangle$ for acentric reflections are 0.5, 0.333 respectively for untwinned datasets, and 0.375, 0.2 for perfectly twinned datasets.

5 Model quality [i](#)

5.1 Standard geometry [i](#)

Bond lengths and bond angles in the following residue types are not validated in this section: PCA, IPH, PO4

The Z score for a bond length (or angle) is the number of standard deviations the observed value is removed from the expected value. A bond length (or angle) with $|Z| > 5$ is considered an outlier worth inspection. RMSZ is the root-mean-square of all Z scores of the bond lengths (or angles).

Mol	Chain	Bond lengths		Bond angles	
		RMSZ	# Z >5	RMSZ	# Z >5
1	A	0.44	0/1628	0.95	7/2224 (0.3%)
1	B	0.40	0/1628	0.88	1/2224 (0.0%)
All	All	0.42	0/3256	0.91	8/4448 (0.2%)

There are no bond length outliers.

All (8) bond angle outliers are listed below:

Mol	Chain	Res	Type	Atoms	Z	Observed(°)	Ideal(°)
1	B	93	TYR	N-CA-C	-7.35	100.36	110.35
1	A	158	SER	CA-C-N	6.74	126.76	119.89
1	A	158	SER	C-N-CA	6.74	126.76	119.89
1	A	98	THR	CA-C-N	6.44	126.19	119.05
1	A	98	THR	C-N-CA	6.44	126.19	119.05
1	A	93	TYR	N-CA-C	-5.80	102.87	110.53
1	A	120	VAL	N-CA-C	5.23	115.49	108.17
1	A	95	SER	N-CA-C	-5.17	101.85	110.17

There are no chirality outliers.

There are no planarity outliers.

5.2 Too-close contacts [i](#)

In the following table, the Non-H and H(model) columns list the number of non-hydrogen atoms and hydrogen atoms in the chain respectively. The H(added) column lists the number of hydrogen atoms added and optimized by MolProbity. The Clashes column lists the number of clashes within the asymmetric unit, whereas Symm-Clashes lists symmetry-related clashes.

Mol	Chain	Non-H	H(model)	H(added)	Clashes	Symm-Clashes
1	A	1596	0	1529	44	0

Continued on next page...

Continued from previous page...

Mol	Chain	Non-H	H(model)	H(added)	Clashes	Symm-Clashes
1	B	1596	0	1529	53	0
2	A	25	0	0	0	0
2	B	5	0	0	0	0
3	B	7	0	6	0	0
4	A	37	0	0	1	0
4	B	29	0	0	0	0
All	All	3295	0	3064	93	0

The all-atom clashscore is defined as the number of clashes found per 1000 atoms (including hydrogen atoms). The all-atom clashscore for this structure is 15.

All (93) close contacts within the same asymmetric unit are listed below, sorted by their clash magnitude.

Atom-1	Atom-2	Interatomic distance (Å)	Clash overlap (Å)
1:B:197:SER:HB3	1:B:210:THR:HG22	1.59	0.85
1:B:6:GLN:HE21	1:B:103:GLY:HA3	1.52	0.74
1:A:153:TRP:O	1:A:154:LYS:HD2	1.88	0.73
1:A:190:TRP:HH2	1:A:211:VAL:HG12	1.54	0.72
1:B:185:LEU:HG	1:B:186:THR:H	1.58	0.69
1:B:128:GLU:HA	1:B:131:GLN:HG2	1.75	0.69
1:B:197:SER:CB	1:B:210:THR:HG22	2.23	0.68
1:B:51:TYR:O	1:B:55:ASN:HB2	1.98	0.64
1:B:153:TRP:CE3	1:B:183:LEU:HD22	2.33	0.63
1:A:24:GLY:O	1:A:71:ASN:HB3	1.99	0.62
1:B:186:THR:HG22	1:B:188:GLU:H	1.65	0.61
1:A:185:LEU:HD21	1:A:196:TYR:CZ	2.36	0.61
1:B:173:SER:C	1:B:175:ASN:H	2.08	0.61
1:A:199:GLN:HG2	1:A:208:GLU:HG2	1.84	0.60
1:B:132:ALA:O	1:B:134:LYS:HG3	2.03	0.59
1:B:113:GLN:HB2	1:B:145:TYR:CE1	2.40	0.56
1:A:186:THR:HB	1:A:188:GLU:OE1	2.05	0.56
1:B:131:GLN:C	1:B:133:ASN:H	2.13	0.56
1:A:154:LYS:HD3	1:A:199:GLN:OE1	2.05	0.55
1:B:152:ALA:HA	1:B:161:LYS:HZ3	1.70	0.55
1:A:164:VAL:HG22	1:A:183:LEU:HD13	1.90	0.54
1:A:61:SER:OG	1:A:63:ARG:HG3	2.06	0.54
1:A:85:GLU:HG3	1:A:108:LEU:O	2.08	0.53
1:B:185:LEU:HD23	1:B:190:TRP:HB2	1.90	0.53
1:A:131:GLN:C	1:A:133:ASN:H	2.17	0.52
1:A:52:GLU:O	1:A:54:THR:N	2.42	0.52
1:A:156:ASP:O	1:A:157:SER:HB2	2.10	0.52

Continued on next page...

Continued from previous page...

Atom-1	Atom-2	Interatomic distance (Å)	Clash overlap (Å)
1:B:120:VAL:HA	1:B:140:LEU:O	2.09	0.52
1:B:155:ALA:O	1:B:156:ASP:HB2	2.10	0.51
1:A:174:ASN:O	1:A:175:ASN:HB2	2.10	0.51
1:A:12:GLY:O	1:A:110:VAL:HA	2.11	0.51
1:B:174:ASN:OD1	1:B:176:LYS:HB2	2.11	0.51
1:B:185:LEU:HG	1:B:186:THR:N	2.24	0.50
1:A:141:ILE:HD12	1:A:141:ILE:N	2.27	0.50
1:A:156:ASP:OD2	1:A:193:HIS:HB3	2.11	0.50
1:A:115:LYS:HG2	1:A:146:PRO:HD3	1.94	0.49
1:A:190:TRP:CH2	1:A:211:VAL:HG12	2.42	0.49
1:B:129:GLU:OE1	1:B:136:THR:HB	2.13	0.49
1:A:45:ALA:HB2	1:B:104:GLY:HA2	1.93	0.48
1:B:186:THR:C	1:B:188:GLU:N	2.70	0.48
1:B:190:TRP:C	1:B:192:SER:H	2.21	0.48
1:B:115:LYS:HD2	1:B:203:GLU:OE2	2.14	0.48
1:B:146:PRO:C	1:B:148:ALA:H	2.22	0.47
1:B:117:ALA:HA	1:B:202:HIS:HD2	1.78	0.47
1:B:118:PRO:HB2	1:B:141:ILE:HG23	1.97	0.47
1:B:117:ALA:HA	1:B:202:HIS:CD2	2.50	0.47
1:B:173:SER:C	1:B:175:ASN:N	2.73	0.47
1:A:41:HIS:CE1	1:A:86:ALA:HB2	2.50	0.46
1:B:156:ASP:OD1	1:B:194:ARG:HB2	2.16	0.46
1:A:115:LYS:HE3	1:A:203:GLU:HG3	1.97	0.46
1:B:113:GLN:HB2	1:B:145:TYR:CZ	2.51	0.46
1:A:190:TRP:CZ3	1:A:196:TYR:HD2	2.34	0.46
1:A:169:PRO:HA	1:A:178:ALA:O	2.15	0.45
1:A:186:THR:OG1	1:A:189:GLN:HG3	2.17	0.45
1:A:37:TRP:HB2	1:A:50:ILE:HB	1.99	0.45
1:B:186:THR:CG2	1:B:187:PRO:HD2	2.46	0.45
1:A:98:THR:HA	1:A:99:PRO:HD3	1.78	0.45
1:A:173:SER:C	1:A:175:ASN:H	2.25	0.45
1:B:80:LEU:HD21	1:B:110:VAL:HG22	1.99	0.45
1:A:145:TYR:HA	1:A:146:PRO:C	2.42	0.44
1:A:164:VAL:CG2	1:A:183:LEU:HD13	2.46	0.44
1:A:51:TYR:CD1	1:A:52:GLU:HG3	2.52	0.44
1:A:67:SER:HB2	4:A:1014:HOH:O	2.16	0.44
1:B:18:ILE:C	1:B:18:ILE:HD12	2.42	0.44
1:B:51:TYR:CE2	1:B:55:ASN:HB3	2.52	0.44
1:B:118:PRO:HD3	1:B:202:HIS:CD2	2.52	0.44
1:A:48:LEU:HD23	1:B:99:PRO:HG2	1.99	0.44
1:A:104:GLY:HA2	1:B:45:ALA:HB2	1.99	0.44

Continued on next page...

Continued from previous page...

Atom-1	Atom-2	Interatomic distance (Å)	Clash overlap (Å)
1:A:146:PRO:O	1:A:202:HIS:HE1	2.01	0.44
1:B:122:LEU:HD23	1:B:211:VAL:HG23	2.00	0.43
1:A:10:VAL:HG23	1:A:108:LEU:CD1	2.47	0.43
1:A:141:ILE:HG22	1:A:144:PHE:CD2	2.53	0.43
1:B:120:VAL:HG23	1:B:139:CYS:SG	2.58	0.43
1:B:126:SER:O	1:B:130:LEU:HG	2.19	0.43
1:A:186:THR:C	1:A:188:GLU:N	2.77	0.43
1:B:111:LEU:C	1:B:113:GLN:H	2.26	0.42
1:A:153:TRP:C	1:A:154:LYS:HD2	2.42	0.42
1:B:4:LEU:HB2	1:B:103:GLY:HA2	2.01	0.42
1:B:186:THR:C	1:B:188:GLU:H	2.26	0.42
1:A:30:GLY:HA3	1:A:71:ASN:ND2	2.35	0.42
1:B:85:GLU:HG3	1:B:109:THR:HA	2.01	0.42
1:B:118:PRO:HD3	1:B:202:HIS:CG	2.54	0.42
1:B:120:VAL:CG2	1:B:139:CYS:SG	3.08	0.42
1:A:209:LYS:HA	1:A:209:LYS:HD3	1.81	0.41
1:B:201:THR:HG23	1:B:205:SER:O	2.20	0.41
1:B:150:THR:OG1	1:B:201:THR:HB	2.20	0.41
1:A:199:GLN:HG2	1:A:208:GLU:CG	2.49	0.41
1:B:118:PRO:HB2	1:B:141:ILE:CG2	2.51	0.41
1:A:122:LEU:HD23	1:A:211:VAL:HG23	2.03	0.41
1:B:32:TYR:OH	1:B:95:SER:HB3	2.21	0.41
1:A:48:LEU:CD2	1:B:99:PRO:HG2	2.51	0.40
1:B:131:GLN:C	1:B:133:ASN:N	2.78	0.40
1:B:174:ASN:C	1:B:176:LYS:H	2.29	0.40

There are no symmetry-related clashes.

5.3 Torsion angles [i](#)

5.3.1 Protein backbone [i](#)

In the following table, the Percentiles column shows the percent Ramachandran outliers of the chain as a percentile score with respect to all X-ray entries followed by that with respect to entries of similar resolution.

The Analysed column shows the number of residues for which the backbone conformation was analysed, and the total number of residues.

Mol	Chain	Analysed	Favoured	Allowed	Outliers	Percentiles
1	A	215/217 (99%)	201 (94%)	12 (6%)	2 (1%)	14 30

Continued on next page...

Continued from previous page...

Mol	Chain	Analysed	Favoured	Allowed	Outliers	Percentiles	
1	B	215/217 (99%)	191 (89%)	22 (10%)	2 (1%)	14	30
All	All	430/434 (99%)	392 (91%)	34 (8%)	4 (1%)	14	30

All (4) Ramachandran outliers are listed below:

Mol	Chain	Res	Type
1	A	132	ALA
1	A	190	TRP
1	B	132	ALA
1	B	169	PRO

5.3.2 Protein sidechains [i](#)

In the following table, the Percentiles column shows the percent sidechain outliers of the chain as a percentile score with respect to all X-ray entries followed by that with respect to entries of similar resolution.

The Analysed column shows the number of residues for which the sidechain conformation was analysed, and the total number of residues.

Mol	Chain	Analysed	Rotameric	Outliers	Percentiles	
1	A	179/179 (100%)	176 (98%)	3 (2%)	53	78
1	B	179/179 (100%)	174 (97%)	5 (3%)	38	66
All	All	358/358 (100%)	350 (98%)	8 (2%)	45	72

All (8) residues with a non-rotameric sidechain are listed below:

Mol	Chain	Res	Type
1	A	140	LEU
1	A	185	LEU
1	A	190	TRP
1	B	4	LEU
1	B	28	ASP
1	B	168	THR
1	B	175	ASN
1	B	216	CYS

Sometimes sidechains can be flipped to improve hydrogen bonding and reduce clashes. All (6) such sidechains are listed below:

Mol	Chain	Res	Type
1	A	6	GLN
1	A	71	ASN
1	A	202	HIS
1	B	6	GLN
1	B	39	GLN
1	B	175	ASN

5.3.3 RNA [i](#)

There are no RNA molecules in this entry.

5.4 Non-standard residues in protein, DNA, RNA chains [i](#)

2 non-standard protein/DNA/RNA residues are modelled in this entry.

In the following table, the Counts columns list the number of bonds (or angles) for which Mogul statistics could be retrieved, the number of bonds (or angles) that are observed in the model and the number of bonds (or angles) that are defined in the Chemical Component Dictionary. The Link column lists molecule types, if any, to which the group is linked. The Z score for a bond length (or angle) is the number of standard deviations the observed value is removed from the expected value. A bond length (or angle) with $|Z| > 2$ is considered an outlier worth inspection. RMSZ is the root-mean-square of all Z scores of the bond lengths (or angles).

Mol	Type	Chain	Res	Link	Bond lengths			Bond angles		
					Counts	RMSZ	# Z > 2	Counts	RMSZ	# Z > 2
1	PCA	A	1	1	7,8,9	1.11	1 (14%)	9,10,12	1.21	1 (11%)
1	PCA	B	1	1	7,8,9	1.13	1 (14%)	9,10,12	1.19	0

In the following table, the Chirals column lists the number of chiral outliers, the number of chiral centers analysed, the number of these observed in the model and the number defined in the Chemical Component Dictionary. Similar counts are reported in the Torsion and Rings columns. '-' means no outliers of that kind were identified.

Mol	Type	Chain	Res	Link	Chirals	Torsions	Rings
1	PCA	A	1	1	-	0/0/11/13	0/1/1/1
1	PCA	B	1	1	-	0/0/11/13	0/1/1/1

All (2) bond length outliers are listed below:

Mol	Chain	Res	Type	Atoms	Z	Observed(Å)	Ideal(Å)
1	A	1	PCA	CA-N	2.36	1.49	1.46
1	B	1	PCA	CA-N	2.28	1.49	1.46

All (1) bond angle outliers are listed below:

Mol	Chain	Res	Type	Atoms	Z	Observed(°)	Ideal(°)
1	A	1	PCA	CB-CA-C	-2.26	109.56	112.66

There are no chirality outliers.

There are no torsion outliers.

There are no ring outliers.

No monomer is involved in short contacts.

5.5 Carbohydrates [i](#)

There are no oligosaccharides in this entry.

5.6 Ligand geometry [i](#)

7 ligands are modelled in this entry.

In the following table, the Counts columns list the number of bonds (or angles) for which Mogul statistics could be retrieved, the number of bonds (or angles) that are observed in the model and the number of bonds (or angles) that are defined in the Chemical Component Dictionary. The Link column lists molecule types, if any, to which the group is linked. The Z score for a bond length (or angle) is the number of standard deviations the observed value is removed from the expected value. A bond length (or angle) with $|Z| > 2$ is considered an outlier worth inspection. RMSZ is the root-mean-square of all Z scores of the bond lengths (or angles).

Mol	Type	Chain	Res	Link	Bond lengths			Bond angles		
					Counts	RMSZ	# Z > 2	Counts	RMSZ	# Z > 2
2	PO4	B	1003	-	4,4,4	1.47	1 (25%)	6,6,6	0.95	0
2	PO4	A	1002	-	4,4,4	1.29	1 (25%)	6,6,6	0.95	0
2	PO4	A	1005	-	4,4,4	1.43	1 (25%)	6,6,6	0.90	0
2	PO4	A	1001	-	4,4,4	1.33	1 (25%)	6,6,6	0.84	0
3	IPH	B	2001	-	7,7,7	2.83	5 (71%)	8,8,8	1.87	3 (37%)
2	PO4	A	1006	-	4,4,4	1.60	1 (25%)	6,6,6	0.88	0
2	PO4	A	1004	-	4,4,4	1.59	1 (25%)	6,6,6	0.89	0

In the following table, the Chirals column lists the number of chiral outliers, the number of chiral centers analysed, the number of these observed in the model and the number defined in the Chemical Component Dictionary. Similar counts are reported in the Torsion and Rings columns. '-' means no outliers of that kind were identified.

Mol	Type	Chain	Res	Link	Chirals	Torsions	Rings
3	IPH	B	2001	-	-	-	0/1/1/1

All (11) bond length outliers are listed below:

Mol	Chain	Res	Type	Atoms	Z	Observed(Å)	Ideal(Å)
3	B	2001	IPH	C5-C6	4.22	1.46	1.38
3	B	2001	IPH	C3-C2	3.39	1.44	1.38
3	B	2001	IPH	C2-C1	3.36	1.45	1.39
2	A	1006	PO4	P-O1	2.91	1.57	1.50
2	A	1004	PO4	P-O1	2.86	1.57	1.50
2	B	1003	PO4	P-O1	2.59	1.56	1.50
2	A	1005	PO4	P-O1	2.49	1.56	1.50
3	B	2001	IPH	C4-C3	2.47	1.43	1.38
2	A	1001	PO4	P-O1	2.34	1.56	1.50
2	A	1002	PO4	P-O1	2.30	1.56	1.50
3	B	2001	IPH	C5-C4	2.02	1.42	1.38

All (3) bond angle outliers are listed below:

Mol	Chain	Res	Type	Atoms	Z	Observed(°)	Ideal(°)
3	B	2001	IPH	C6-C1-C2	3.57	125.44	119.77
3	B	2001	IPH	C3-C2-C1	-2.55	115.85	119.29
3	B	2001	IPH	C5-C6-C1	-2.02	116.57	119.29

There are no chirality outliers.

There are no torsion outliers.

There are no ring outliers.

No monomer is involved in short contacts.

5.7 Other polymers [i](#)

There are no such residues in this entry.

5.8 Polymer linkage issues [i](#)

There are no chain breaks in this entry.

6 Fit of model and data [i](#)

6.1 Protein, DNA and RNA chains [i](#)

In the following table, the column labelled ‘#RSRZ> 2’ contains the number (and percentage) of RSRZ outliers, followed by percent RSRZ outliers for the chain as percentile scores relative to all X-ray entries and entries of similar resolution. The OWAB column contains the minimum, median, 95th percentile and maximum values of the occupancy-weighted average B-factor per residue. The column labelled ‘Q< 0.9’ lists the number of (and percentage) of residues with an average occupancy less than 0.9.

Mol	Chain	Analysed	<RSRZ>	#RSRZ>2	OWAB(Å ²)	Q<0.9
1	A	216/217 (99%)	0.06	2 (0%) 81 78	33, 53, 90, 135	0
1	B	216/217 (99%)	0.33	13 (6%) 27 22	28, 58, 132, 141	0
All	All	432/434 (99%)	0.20	15 (3%) 47 41	28, 53, 125, 141	0

All (15) RSRZ outliers are listed below:

Mol	Chain	Res	Type	RSRZ
1	B	160	VAL	4.2
1	B	190	TRP	3.3
1	B	162	ALA	3.1
1	B	164	VAL	3.0
1	B	183	LEU	2.8
1	B	196	TYR	2.6
1	B	214	THR	2.6
1	B	200	VAL	2.4
1	B	161	LYS	2.4
1	B	186	THR	2.3
1	A	216	CYS	2.3
1	B	159	PRO	2.3
1	B	182	TYR	2.2
1	B	112	GLY	2.2
1	A	21	SER	2.1

6.2 Non-standard residues in protein, DNA, RNA chains [i](#)

In the following table, the Atoms column lists the number of modelled atoms in the group and the number defined in the chemical component dictionary. The B-factors column lists the minimum, median, 95th percentile and maximum values of B factors of atoms in the group. The column labelled ‘Q< 0.9’ lists the number of atoms with occupancy less than 0.9.

Mol	Type	Chain	Res	Atoms	RSCC	RSR	B-factors(\AA^2)	Q<0.9
1	PCA	A	1	8/9	0.86	0.14	78,81,83,83	0
1	PCA	B	1	8/9	0.88	0.20	70,71,73,74	0

6.3 Carbohydrates [i](#)

There are no oligosaccharides in this entry.

6.4 Ligands [i](#)

In the following table, the Atoms column lists the number of modelled atoms in the group and the number defined in the chemical component dictionary. The B-factors column lists the minimum, median, 95th percentile and maximum values of B factors of atoms in the group. The column labelled 'Q< 0.9' lists the number of atoms with occupancy less than 0.9.

Mol	Type	Chain	Res	Atoms	RSCC	RSR	B-factors(\AA^2)	Q<0.9
2	PO4	A	1004	5/5	0.72	0.16	103,103,104,104	0
2	PO4	A	1006	5/5	0.75	0.14	107,108,109,109	0
2	PO4	A	1005	5/5	0.80	0.18	103,104,104,105	0
2	PO4	B	1003	5/5	0.90	0.09	104,104,105,105	0
3	IPH	B	2001	7/7	0.92	0.17	38,39,46,48	0
2	PO4	A	1001	5/5	0.96	0.08	42,50,52,53	0
2	PO4	A	1002	5/5	0.97	0.07	41,41,43,44	0

6.5 Other polymers [i](#)

There are no such residues in this entry.