



Full wwPDB X-ray Structure Validation Report ⓘ

Mar 5, 2026 – 01:44 AM UTC

PDB ID : 3OLF / pdb_00003olf
Title : Crystal structure of human FXR in complex with 4-((2S)-2-[2-(4-chlorophenyl)-5,6-difluoro-1H-benzimidazol-1-yl]-2-cyclohexylacetyl}amino)-3-methylbenzoic acid
Authors : Rudolph, M.G.
Deposited on : 2010-08-26
Resolution : 1.90 Å(reported)

This is a Full wwPDB X-ray Structure Validation Report for a publicly released PDB entry.

We welcome your comments at validation@mail.wwpdb.org

A user guide is available at

<https://www.wwpdb.org/validation/2017/XrayValidationReportHelp>

with specific help available everywhere you see the ⓘ symbol.

The types of validation reports are described at

<http://www.wwpdb.org/validation/2017/FAQs#types>.

The following versions of software and data (see [references ⓘ](#)) were used in the production of this report:

MolProbity : 4-5-2 with Phenix2.0
Mogul : 2022.3.0, CSD as543be (2022)
Xtriage (Phenix) : 2.0
EDS : 3.0
Buster-report : wwPDB partial adaption of 1.1.7 (2018)
Percentile statistics : 20250101.v01 (using entries in the PDB archive January 1st 2025)
CCP4 : 9.0.010 (Gargrove)
Density-Fitness : 1.0.12
Ideal geometry (proteins) : Engh & Huber (2001)
Ideal geometry (DNA, RNA) : Parkinson et al. (1996)
Validation Pipeline (wwPDB-VP) : 2.49

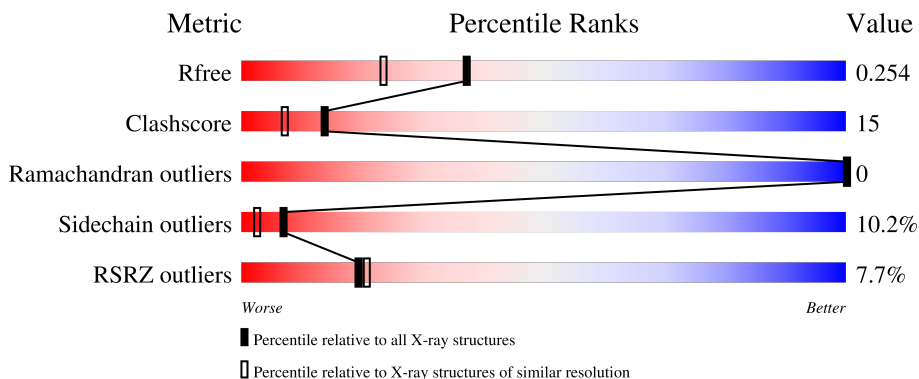
1 Overall quality at a glance

The following experimental techniques were used to determine the structure:

X-RAY DIFFRACTION

The reported resolution of this entry is 1.90 Å.

Percentile scores (ranging between 0-100) for global validation metrics of the entry are shown in the following graphic. The table shows the number of entries on which the scores are based.



Metric	Whole archive (#Entries)	Similar resolution (#Entries, resolution range(Å))
R_{free}	180053	7789 (1.90-1.90)
Clashscore	190562	8410 (1.90-1.90)
Ramachandran outliers	187476	8333 (1.90-1.90)
Sidechain outliers	187428	8333 (1.90-1.90)
RSRZ outliers	180081	7790 (1.90-1.90)

The table below summarises the geometric issues observed across the polymeric chains and their fit to the electron density. The red, orange, yellow and green segments of the lower bar indicate the fraction of residues that contain outliers for ≥ 3 , 2, 1 and 0 types of geometric quality criteria respectively. A grey segment represents the fraction of residues that are not modelled. The numeric value for each fraction is indicated below the corresponding segment, with a dot representing fractions $\leq 5\%$. The upper red bar (where present) indicates the fraction of residues that have poor fit to the electron density. The numeric value is given above the bar.

Mol	Chain	Length	Quality of chain
1	A	233	 7% 70% 25% ..
1	C	233	 8% 66% 29% ..
2	B	14	 7% 64% 14% 21%
2	D	14	 7% 57% 21% 21%

2 Entry composition [i](#)

There are 4 unique types of molecules in this entry. The entry contains 4233 atoms, of which 0 are hydrogens and 0 are deuteriums.

In the tables below, the ZeroOcc column contains the number of atoms modelled with zero occupancy, the AltConf column contains the number of residues with at least one atom in alternate conformation and the Trace column contains the number of residues modelled with at most 2 atoms.

- Molecule 1 is a protein called Bile acid receptor.

Mol	Chain	Residues	Atoms					ZeroOcc	AltConf	Trace
			Total	C	N	O	S			
1	A	230	1885	1206	319	349	11	0	1	0
1	C	230	1881	1203	317	349	12	0	0	0

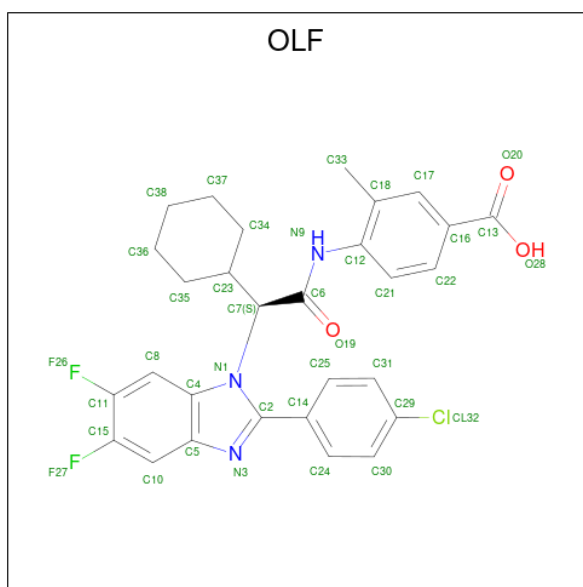
There are 12 discrepancies between the modelled and reference sequences:

Chain	Residue	Modelled	Actual	Comment	Reference
A	244	GLY	-	expression tag	UNP Q96RI1
A	245	SER	-	expression tag	UNP Q96RI1
A	246	HIS	-	expression tag	UNP Q96RI1
A	247	MET	-	expression tag	UNP Q96RI1
A	281	ALA	GLU	engineered mutation	UNP Q96RI1
A	354	ALA	GLU	engineered mutation	UNP Q96RI1
C	244	GLY	-	expression tag	UNP Q96RI1
C	245	SER	-	expression tag	UNP Q96RI1
C	246	HIS	-	expression tag	UNP Q96RI1
C	247	MET	-	expression tag	UNP Q96RI1
C	281	ALA	GLU	engineered mutation	UNP Q96RI1
C	354	ALA	GLU	engineered mutation	UNP Q96RI1

- Molecule 2 is a protein called peptide of Nuclear receptor coactivator 1.

Mol	Chain	Residues	Atoms				ZeroOcc	AltConf	Trace
			Total	C	N	O			
2	B	11	99	64	18	17	0	0	0
2	D	11	99	64	18	17	0	0	0

- Molecule 3 is 4-((2S)-2-[2-(4-chlorophenyl)-5,6-difluoro-1H-benzimidazol-1-yl]-2-cyclohexyl acetyl)amino)-3-methylbenzoic acid (CCD ID: OLF) (formula: C₂₉H₂₆ClF₂N₃O₃).



Mol	Chain	Residues	Atoms					ZeroOcc	AltConf	
			Total	C	Cl	F	N			O
3	A	1	Total	C	Cl	F	N	O	0	0
			38	29	1	2	3	3		
3	C	1	Total	C	Cl	F	N	O	0	0
			38	29	1	2	3	3		

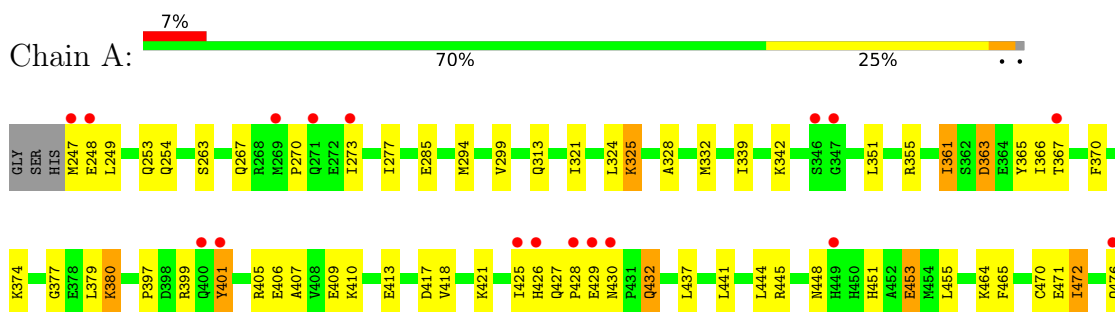
- Molecule 4 is water.

Mol	Chain	Residues	Atoms		ZeroOcc	AltConf
4	A	110	Total	O	0	0
			110	110		
4	B	8	Total	O	0	0
			8	8		
4	C	73	Total	O	0	0
			73	73		
4	D	2	Total	O	0	0
			2	2		

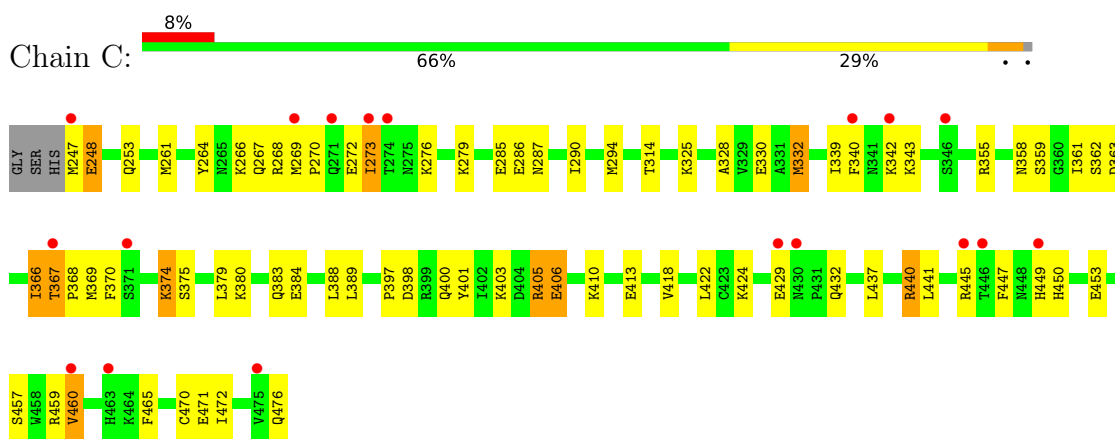
3 Residue-property plots [i](#)

These plots are drawn for all protein, RNA, DNA and oligosaccharide chains in the entry. The first graphic for a chain summarises the proportions of the various outlier classes displayed in the second graphic. The second graphic shows the sequence view annotated by issues in geometry and electron density. Residues are color-coded according to the number of geometric quality criteria for which they contain at least one outlier: green = 0, yellow = 1, orange = 2 and red = 3 or more. A red dot above a residue indicates a poor fit to the electron density ($RSRZ > 2$). Stretches of 2 or more consecutive residues without any outlier are shown as a green connector. Residues present in the sample, but not in the model, are shown in grey.

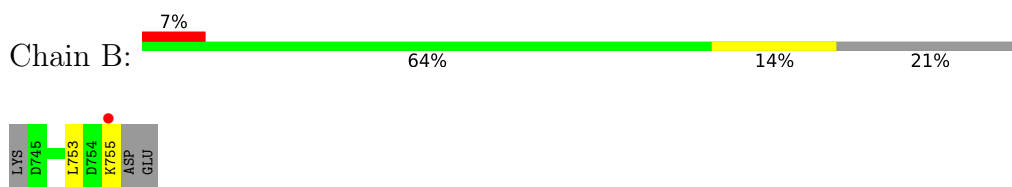
- Molecule 1: Bile acid receptor



- Molecule 1: Bile acid receptor



- Molecule 2: peptide of Nuclear receptor coactivator 1



- Molecule 2: peptide of Nuclear receptor coactivator 1





4 Data and refinement statistics

Property	Value	Source
Space group	C 2 2 21	Depositor
Cell constants a, b, c, α , β , γ	72.28Å 84.86Å 191.56Å 90.00° 90.00° 90.00°	Depositor
Resolution (Å)	28.44 – 1.90 28.44 – 1.90	Depositor EDS
% Data completeness (in resolution range)	89.1 (28.44-1.90) 89.1 (28.44-1.90)	Depositor EDS
R_{merge}	0.06	Depositor
R_{sym}	0.06	Depositor
$\langle I/\sigma(I) \rangle$ ¹	1.29 (at 1.91Å)	Xtrriage
Refinement program	BUSTER 2.9.5	Depositor
R, R_{free}	0.205 , 0.238 0.216 , 0.254	Depositor DCC
R_{free} test set	2091 reflections (4.47%)	wwPDB-VP
Wilson B-factor (Å ²)	35.3	Xtrriage
Anisotropy	0.294	Xtrriage
Bulk solvent k_{sol} (e/Å ³), B_{sol} (Å ²)	0.34 , 43.7	EDS
L-test for twinning ²	$\langle L \rangle = 0.48$, $\langle L^2 \rangle = 0.31$	Xtrriage
Estimated twinning fraction	No twinning to report.	Xtrriage
F_o, F_c correlation	0.95	EDS
Total number of atoms	4233	wwPDB-VP
Average B, all atoms (Å ²)	45.0	wwPDB-VP

Xtrriage's analysis on translational NCS is as follows: *The largest off-origin peak in the Patterson function is 5.09% of the height of the origin peak. No significant pseudotranslation is detected.*

¹Intensities estimated from amplitudes.

²Theoretical values of $\langle |L| \rangle$, $\langle L^2 \rangle$ for acentric reflections are 0.5, 0.333 respectively for untwinned datasets, and 0.375, 0.2 for perfectly twinned datasets.

5 Model quality [i](#)

5.1 Standard geometry [i](#)

Bond lengths and bond angles in the following residue types are not validated in this section: OLF

The Z score for a bond length (or angle) is the number of standard deviations the observed value is removed from the expected value. A bond length (or angle) with $|Z| > 5$ is considered an outlier worth inspection. RMSZ is the root-mean-square of all Z scores of the bond lengths (or angles).

Mol	Chain	Bond lengths		Bond angles	
		RMSZ	# Z >5	RMSZ	# Z >5
1	A	0.73	0/1929	1.17	3/2607 (0.1%)
1	C	0.67	0/1921	1.13	4/2595 (0.2%)
2	B	0.64	0/100	1.19	0/133
2	D	0.49	0/100	1.05	0/133
All	All	0.69	0/4050	1.15	7/5468 (0.1%)

There are no bond length outliers.

All (7) bond angle outliers are listed below:

Mol	Chain	Res	Type	Atoms	Z	Observed(°)	Ideal(°)
1	A	328	ALA	N-CA-C	5.67	118.19	111.33
1	C	253	GLN	CA-C-N	5.40	127.51	120.28
1	C	253	GLN	C-N-CA	5.40	127.51	120.28
1	C	328	ALA	N-CA-C	5.33	117.51	111.11
1	A	448	ASN	CA-C-N	5.12	127.45	120.54
1	A	448	ASN	C-N-CA	5.12	127.45	120.54
1	C	314	THR	N-CA-C	-5.08	106.86	113.16

There are no chirality outliers.

There are no planarity outliers.

5.2 Too-close contacts [i](#)

In the following table, the Non-H and H(model) columns list the number of non-hydrogen atoms and hydrogen atoms in the chain respectively. The H(added) column lists the number of hydrogen atoms added and optimized by MolProbity. The Clashes column lists the number of clashes within the asymmetric unit, whereas Symm-Clashes lists symmetry-related clashes.

Mol	Chain	Non-H	H(model)	H(added)	Clashes	Symm-Clashes
1	A	1885	0	1883	42	0
1	C	1881	0	1883	72	0
2	B	99	0	101	1	0
2	D	99	0	101	3	0
3	A	38	0	25	4	0
3	C	38	0	25	6	0
4	A	110	0	0	4	0
4	B	8	0	0	0	0
4	C	73	0	0	4	0
4	D	2	0	0	0	0
All	All	4233	0	4018	117	0

The all-atom clashscore is defined as the number of clashes found per 1000 atoms (including hydrogen atoms). The all-atom clashscore for this structure is 15.

All (117) close contacts within the same asymmetric unit are listed below, sorted by their clash magnitude.

Atom-1	Atom-2	Interatomic distance (Å)	Clash overlap (Å)
1:C:389:LEU:HD11	1:C:441:LEU:HD11	1.38	1.06
1:C:332:MET:HE1	3:C:2:OLF:H31	1.38	1.01
1:A:361:ILE:HD11	1:A:365:TYR:HB2	1.47	0.96
1:C:379:LEU:HD11	1:C:440:ARG:HE	1.35	0.90
1:C:400:GLN:HG3	1:C:401:TYR:HD1	1.36	0.88
1:C:379:LEU:HD13	1:C:437:LEU:HD23	1.62	0.82
1:A:363:ASP:HA	1:A:366:ILE:HD12	1.62	0.80
1:C:465:PHE:H	1:C:476:GLN:NE2	1.85	0.75
1:A:351:LEU:HD11	1:A:355:ARG:NH1	2.03	0.74
1:C:247:MET:HE3	1:C:248:GLU:H	1.53	0.74
1:C:375:SER:OG	1:C:440:ARG:NH2	2.22	0.72
1:C:276:LYS:HE2	1:C:290:ILE:HD13	1.71	0.72
1:C:379:LEU:HD13	1:C:437:LEU:CD2	2.20	0.70
1:C:273:ILE:HD11	3:C:2:OLF:H8	1.75	0.69
1:C:465:PHE:H	1:C:476:GLN:HE21	1.40	0.67
1:C:330:GLU:OE2	1:C:445:ARG:HD2	1.96	0.66
1:C:270:PRO:CG	1:C:342:LYS:HZ2	2.09	0.66
1:A:267:GLN:HG2	4:A:9:HOH:O	1.94	0.66
1:C:379:LEU:HD11	1:C:440:ARG:NE	2.08	0.66
1:C:400:GLN:HG3	1:C:401:TYR:CD1	2.27	0.65
1:C:379:LEU:HG	1:C:440:ARG:HH11	1.63	0.65
1:A:361:ILE:HD11	1:A:365:TYR:CB	2.25	0.64
1:A:324:LEU:HD12	2:B:753:LEU:HD11	1.78	0.64
1:C:449:HIS:HD2	1:C:450:HIS:CE1	2.15	0.64

Continued on next page...

Continued from previous page...

Atom-1	Atom-2	Interatomic distance (Å)	Clash overlap (Å)
1:C:325:LYS:HD2	2:D:746:HIS:CE1	2.34	0.63
1:C:270:PRO:HG2	1:C:342:LYS:NZ	2.14	0.62
1:C:459:ARG:O	1:C:460:VAL:HG23	1.99	0.62
1:A:406:GLU:O	1:A:410:LYS:HG3	1.98	0.62
1:C:363:ASP:HB2	4:C:171:HOH:O	1.97	0.62
1:C:375:SER:CB	1:C:440:ARG:HH22	2.12	0.62
1:C:270:PRO:CG	1:C:342:LYS:NZ	2.63	0.62
1:C:264:TYR:O	1:C:267:GLN:HG3	2.00	0.61
1:A:407:ALA:HA	1:A:410:LYS:HE2	1.82	0.61
1:C:471:GLU:CD	2:D:746:HIS:HA	2.24	0.61
1:A:273:ILE:HG12	1:A:294:MET:HE1	1.83	0.60
1:A:377:GLY:O	1:A:380:LYS:HD2	2.00	0.60
1:C:375:SER:O	1:C:440:ARG:NH1	2.35	0.60
1:C:361:ILE:HG23	1:C:366:ILE:HG12	1.84	0.59
1:C:424:LYS:NZ	4:C:150:HOH:O	2.36	0.59
1:C:400:GLN:O	1:C:401:TYR:HB2	2.03	0.59
1:A:397:PRO:O	1:A:405:ARG:HG2	2.02	0.58
1:C:270:PRO:HG2	1:C:342:LYS:HZ3	1.68	0.58
1:C:273:ILE:HD12	1:C:294:MET:HE2	1.86	0.58
1:C:339:ILE:HD12	3:C:2:OLF:H22	1.87	0.57
1:C:367:THR:HB	1:C:368:PRO:HD3	1.87	0.57
1:C:453:GLU:O	1:C:457:SER:HB3	2.06	0.56
1:C:339:ILE:CD1	3:C:2:OLF:H22	2.36	0.56
1:C:406:GLU:HG2	1:C:410:LYS:NZ	2.22	0.54
1:C:388:LEU:HD11	1:C:418:VAL:HG12	1.90	0.54
1:A:425:ILE:O	1:A:428:PRO:HD3	2.07	0.54
1:A:465:PHE:H	1:A:476:GLN:HE21	1.56	0.54
1:A:285:GLU:HB2	4:A:188:HOH:O	2.07	0.54
1:C:465:PHE:HD2	1:C:476:GLN:HG3	1.74	0.53
1:C:367:THR:HB	1:C:368:PRO:CD	2.39	0.53
1:A:363:ASP:OD1	1:A:363:ASP:N	2.35	0.52
1:A:379:LEU:HD13	1:A:437:LEU:HD23	1.92	0.52
1:A:401:TYR:CD1	1:A:401:TYR:N	2.78	0.51
1:C:276:LYS:HE2	1:C:290:ILE:CD1	2.39	0.51
1:C:449:HIS:CD2	1:C:450:HIS:CE1	2.98	0.51
1:C:273:ILE:CD1	3:C:2:OLF:H8	2.39	0.51
1:A:351:LEU:HD11	1:A:355:ARG:HH12	1.77	0.50
1:A:370:PHE:O	1:A:374:LYS:HD3	2.12	0.50
1:C:375:SER:HB2	1:C:440:ARG:HH22	1.77	0.50
1:C:403:LYS:HE2	4:C:51:HOH:O	2.11	0.50
1:A:332:MET:HE1	3:A:1:OLF:H31	1.94	0.49

Continued on next page...

Continued from previous page...

Atom-1	Atom-2	Interatomic distance (Å)	Clash overlap (Å)
1:A:325:LYS:HE3	1:A:471:GLU:O	2.13	0.49
1:A:342:LYS:HG2	4:A:167:HOH:O	2.13	0.49
1:A:273:ILE:HG12	1:A:294:MET:CE	2.43	0.48
1:A:465:PHE:H	1:A:476:GLN:NE2	2.10	0.48
1:C:340:PHE:CE2	1:C:370:PHE:HE1	2.31	0.48
1:C:340:PHE:CE2	1:C:370:PHE:CE1	3.01	0.48
1:C:379:LEU:CD1	1:C:437:LEU:HD23	2.40	0.48
1:A:430:ASN:C	1:A:432:GLN:H	2.20	0.48
1:A:247:MET:O	1:A:421:LYS:HD3	2.14	0.48
1:C:269:MET:O	1:C:272:GLU:HB2	2.13	0.47
1:C:472:ILE:HG13	2:D:749:LEU:HD11	1.97	0.47
1:C:388:LEU:HD12	1:C:422:LEU:HD12	1.97	0.47
1:A:351:LEU:HD11	1:A:355:ARG:HH11	1.79	0.46
1:C:449:HIS:HB2	4:C:26:HOH:O	2.16	0.46
1:C:270:PRO:HG3	1:C:342:LYS:HZ2	1.77	0.46
1:A:299:VAL:HG11	1:A:472:ILE:HD12	1.98	0.46
1:A:299:VAL:CG1	1:A:472:ILE:HD12	2.46	0.46
1:C:379:LEU:CG	1:C:440:ARG:HH11	2.28	0.46
1:A:339:ILE:CD1	3:A:1:OLF:H22	2.46	0.46
1:C:437:LEU:O	1:C:440:ARG:HB2	2.16	0.45
1:A:248:GLU:O	1:A:421:LYS:NZ	2.45	0.45
1:A:426:HIS:O	1:A:427:GLN:HG2	2.17	0.45
1:C:369:MET:HA	1:C:447:PHE:CZ	2.52	0.45
1:A:270:PRO:HG2	1:A:342:LYS:NZ	2.32	0.45
1:A:253:GLN:HB3	1:A:418:VAL:HG22	1.98	0.45
1:C:366:ILE:HD13	1:C:369:MET:CE	2.47	0.44
1:A:277:ILE:HG12	4:A:178:HOH:O	2.18	0.44
1:A:441:LEU:O	1:A:445:ARG:HG3	2.17	0.44
3:A:1:OLF:O19	3:A:1:OLF:H35	2.17	0.44
1:C:340:PHE:HE2	1:C:370:PHE:HE1	1.66	0.44
1:C:406:GLU:HG2	1:C:410:LYS:HZ2	1.82	0.44
1:C:273:ILE:CD1	1:C:294:MET:HE2	2.48	0.44
1:A:470:CYS:SG	1:A:476:GLN:HB2	2.58	0.43
3:A:1:OLF:O19	3:A:1:OLF:C35	2.67	0.43
3:C:2:OLF:O19	3:C:2:OLF:C35	2.67	0.43
1:C:397:PRO:O	1:C:405:ARG:HG2	2.19	0.43
1:C:287:ASN:HD22	1:C:359:SER:HA	1.83	0.43
1:C:273:ILE:CG1	1:C:294:MET:HE2	2.49	0.43
1:A:405:ARG:O	1:A:409:GLU:HG3	2.19	0.42
1:C:261:MET:SD	1:C:384:GLU:HA	2.60	0.42
1:A:409:GLU:O	1:A:413:GLU:HG3	2.19	0.42

Continued on next page...

Continued from previous page...

Atom-1	Atom-2	Interatomic distance (Å)	Clash overlap (Å)
1:C:375:SER:CB	1:C:440:ARG:NH2	2.78	0.42
1:A:270:PRO:HG3	1:A:342:LYS:HE3	2.01	0.41
1:C:270:PRO:HG3	1:C:342:LYS:NZ	2.34	0.41
1:C:370:PHE:O	1:C:374:LYS:HG3	2.21	0.41
1:C:286:GLU:O	1:C:290:ILE:HG13	2.20	0.41
1:C:340:PHE:HE2	1:C:370:PHE:CE1	2.39	0.41
1:C:470:CYS:SG	1:C:476:GLN:HB2	2.60	0.41
1:C:264:TYR:CZ	1:C:267:GLN:NE2	2.89	0.40
1:C:437:LEU:HD23	1:C:437:LEU:HA	1.88	0.40
1:A:451[B]:HIS:NE2	1:A:455:LEU:HD11	2.36	0.40
1:A:453:GLU:CD	1:A:453:GLU:H	2.30	0.40

There are no symmetry-related clashes.

5.3 Torsion angles [i](#)

5.3.1 Protein backbone [i](#)

In the following table, the Percentiles column shows the percent Ramachandran outliers of the chain as a percentile score with respect to all X-ray entries followed by that with respect to entries of similar resolution.

The Analysed column shows the number of residues for which the backbone conformation was analysed, and the total number of residues.

Mol	Chain	Analysed	Favoured	Allowed	Outliers	Percentiles	
1	A	229/233 (98%)	225 (98%)	4 (2%)	0	100	100
1	C	228/233 (98%)	219 (96%)	9 (4%)	0	100	100
2	B	9/14 (64%)	9 (100%)	0	0	100	100
2	D	9/14 (64%)	9 (100%)	0	0	100	100
All	All	475/494 (96%)	462 (97%)	13 (3%)	0	100	100

There are no Ramachandran outliers to report.

5.3.2 Protein sidechains [i](#)

In the following table, the Percentiles column shows the percent sidechain outliers of the chain as a percentile score with respect to all X-ray entries followed by that with respect to entries of similar resolution.

The Analysed column shows the number of residues for which the sidechain conformation was analysed, and the total number of residues.

Mol	Chain	Analysed	Rotameric	Outliers	Percentiles	
1	A	211/213 (99%)	192 (91%)	19 (9%)	9	3
1	C	211/213 (99%)	187 (89%)	24 (11%)	5	2
2	B	11/14 (79%)	10 (91%)	1 (9%)	9	3
2	D	11/14 (79%)	10 (91%)	1 (9%)	9	3
All	All	444/454 (98%)	399 (90%)	45 (10%)	7	3

All (45) residues with a non-rotameric sidechain are listed below:

Mol	Chain	Res	Type
1	A	249	LEU
1	A	254	GLN
1	A	263	SER
1	A	313	GLN
1	A	321	ILE
1	A	325	LYS
1	A	361	ILE
1	A	363	ASP
1	A	367	THR
1	A	380	LYS
1	A	399	ARG
1	A	401	TYR
1	A	417	ASP
1	A	429	GLU
1	A	432	GLN
1	A	444	LEU
1	A	453	GLU
1	A	464	LYS
1	A	472	ILE
2	B	755	LYS
1	C	248	GLU
1	C	266	LYS
1	C	268	ARG
1	C	273	ILE
1	C	279	LYS
1	C	285	GLU
1	C	332	MET
1	C	343	LYS
1	C	355	ARG
1	C	358	ASN

Continued on next page...

Continued from previous page...

Mol	Chain	Res	Type
1	C	362	SER
1	C	366	ILE
1	C	367	THR
1	C	374	LYS
1	C	380	LYS
1	C	383	GLN
1	C	398	ASP
1	C	405	ARG
1	C	406	GLU
1	C	413	GLU
1	C	429	GLU
1	C	432	GLN
1	C	440	ARG
1	C	460	VAL
2	D	750	ARG

Sometimes sidechains can be flipped to improve hydrogen bonding and reduce clashes. All (14) such sidechains are listed below:

Mol	Chain	Res	Type
1	A	358	ASN
1	A	426	HIS
1	A	427	GLN
1	A	476	GLN
1	C	254	GLN
1	C	271	GLN
1	C	297	ASN
1	C	412	GLN
1	C	430	ASN
1	C	433	HIS
1	C	449	HIS
1	C	463	HIS
1	C	476	GLN
2	D	746	HIS

5.3.3 RNA

There are no RNA molecules in this entry.

5.4 Non-standard residues in protein, DNA, RNA chains [i](#)

There are no non-standard protein/DNA/RNA residues in this entry.

5.5 Carbohydrates [i](#)

There are no oligosaccharides in this entry.

5.6 Ligand geometry [i](#)

2 ligands are modelled in this entry.

In the following table, the Counts columns list the number of bonds (or angles) for which Mogul statistics could be retrieved, the number of bonds (or angles) that are observed in the model and the number of bonds (or angles) that are defined in the Chemical Component Dictionary. The Link column lists molecule types, if any, to which the group is linked. The Z score for a bond length (or angle) is the number of standard deviations the observed value is removed from the expected value. A bond length (or angle) with $|Z| > 2$ is considered an outlier worth inspection. RMSZ is the root-mean-square of all Z scores of the bond lengths (or angles).

Mol	Type	Chain	Res	Link	Bond lengths			Bond angles		
					Counts	RMSZ	# Z > 2	Counts	RMSZ	# Z > 2
3	OLF	A	1	-	41,42,42	0.79	2 (4%)	58,61,61	1.30	6 (10%)
3	OLF	C	2	-	41,42,42	0.70	2 (4%)	58,61,61	1.31	6 (10%)

In the following table, the Chirals column lists the number of chiral outliers, the number of chiral centers analysed, the number of these observed in the model and the number defined in the Chemical Component Dictionary. Similar counts are reported in the Torsion and Rings columns. '-' means no outliers of that kind were identified.

Mol	Type	Chain	Res	Link	Chirals	Torsions	Rings
3	OLF	A	1	-	-	12/24/32/32	0/5/5/5
3	OLF	C	2	-	-	11/24/32/32	0/5/5/5

All (4) bond length outliers are listed below:

Mol	Chain	Res	Type	Atoms	Z	Observed(Å)	Ideal(Å)
3	A	1	OLF	C4-N1	-2.21	1.36	1.40
3	A	1	OLF	C5-N3	-2.19	1.35	1.39
3	C	2	OLF	C4-N1	-2.12	1.37	1.40
3	C	2	OLF	C5-N3	-2.09	1.35	1.39

All (12) bond angle outliers are listed below:

Mol	Chain	Res	Type	Atoms	Z	Observed(°)	Ideal(°)
3	A	1	OLF	C35-C23-C7	4.65	117.00	111.55
3	C	2	OLF	C35-C23-C7	3.70	115.89	111.55
3	C	2	OLF	C14-C2-N3	3.54	127.29	122.89
3	C	2	OLF	C5-N3-C2	3.09	108.68	104.55
3	A	1	OLF	C34-C23-C7	2.96	115.02	111.55
3	A	1	OLF	C5-N3-C2	2.72	108.18	104.55
3	A	1	OLF	C14-C2-N3	2.68	126.22	122.89
3	C	2	OLF	C8-C4-N1	2.52	133.01	128.59
3	A	1	OLF	C8-C4-N1	2.51	132.98	128.59
3	A	1	OLF	O28-C13-O20	-2.24	118.54	123.35
3	C	2	OLF	C4-C5-N3	-2.20	107.40	110.19
3	C	2	OLF	O28-C13-C16	2.06	120.14	114.84

There are no chirality outliers.

All (23) torsion outliers are listed below:

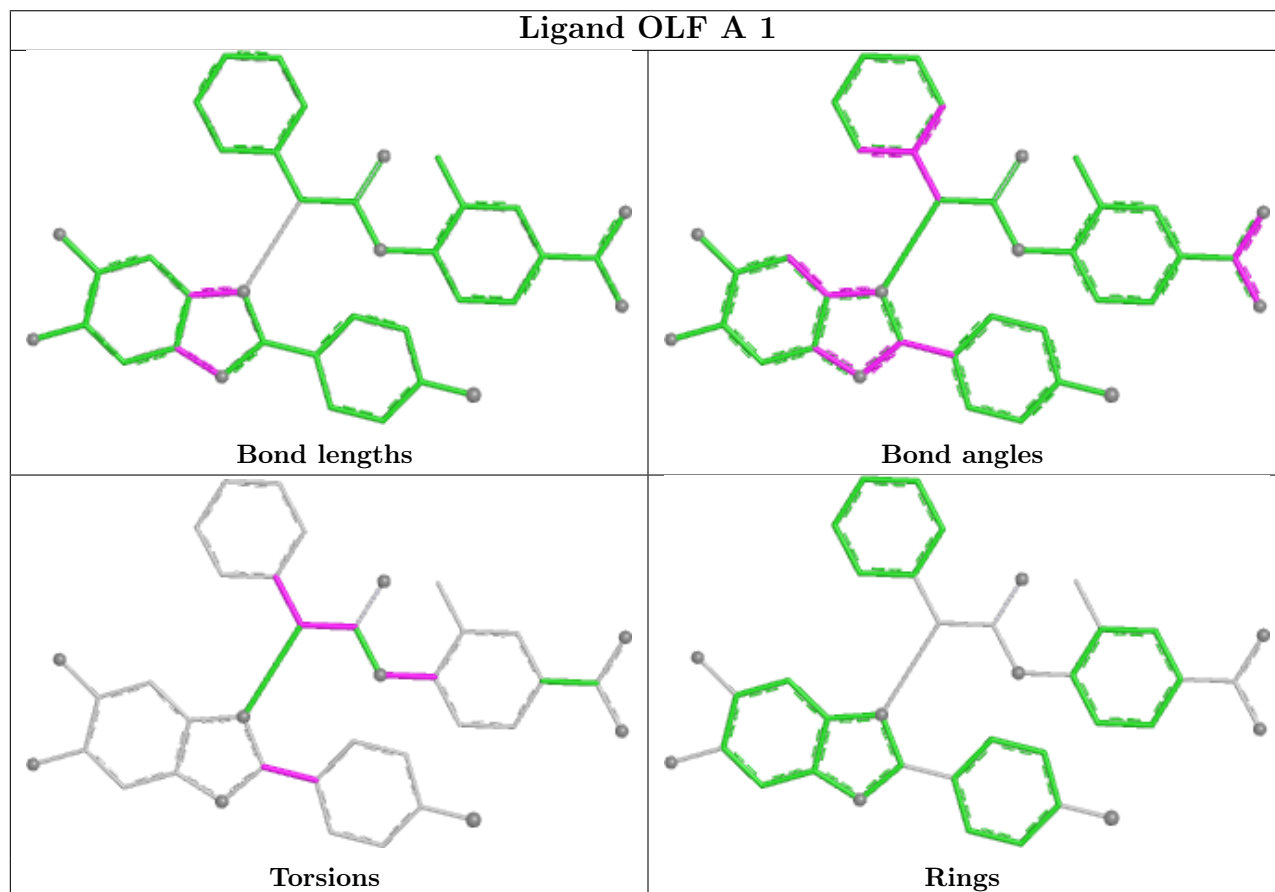
Mol	Chain	Res	Type	Atoms
3	A	1	OLF	C34-C23-C7-C6
3	A	1	OLF	C35-C23-C7-C6
3	C	2	OLF	C34-C23-C7-C6
3	C	2	OLF	C35-C23-C7-C6
3	A	1	OLF	C24-C14-C2-N3
3	A	1	OLF	C24-C14-C2-N1
3	C	2	OLF	C24-C14-C2-N1
3	C	2	OLF	C24-C14-C2-N3
3	C	2	OLF	C21-C12-N9-C6
3	A	1	OLF	C21-C12-N9-C6
3	A	1	OLF	C34-C23-C7-N1
3	A	1	OLF	C35-C23-C7-N1
3	C	2	OLF	C34-C23-C7-N1
3	C	2	OLF	C35-C23-C7-N1
3	A	1	OLF	C25-C14-C2-N3
3	A	1	OLF	C25-C14-C2-N1
3	A	1	OLF	N9-C6-C7-N1
3	C	2	OLF	C18-C12-N9-C6
3	A	1	OLF	C18-C12-N9-C6
3	C	2	OLF	C25-C14-C2-N1
3	C	2	OLF	C25-C14-C2-N3
3	A	1	OLF	O19-C6-C7-N1
3	C	2	OLF	O19-C6-C7-N1

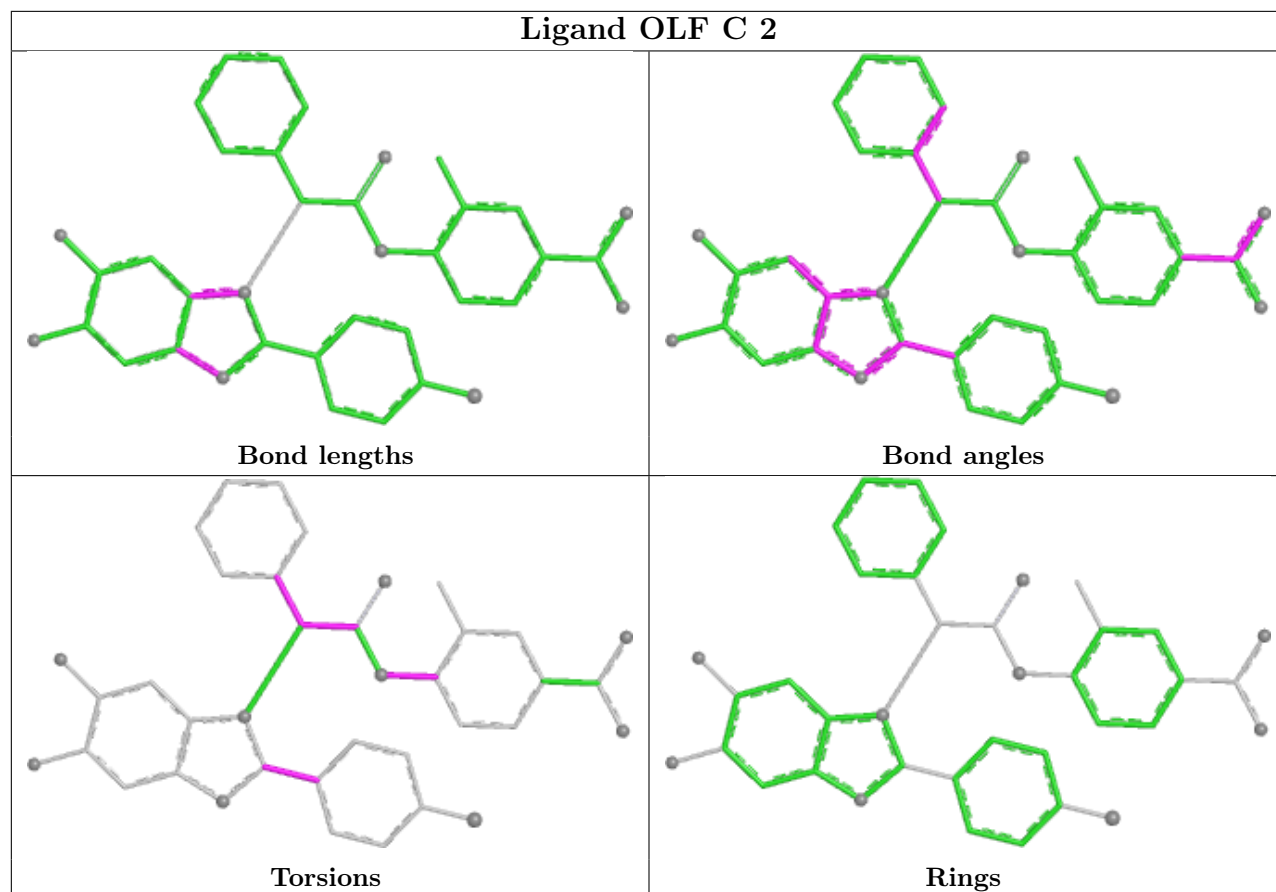
There are no ring outliers.

2 monomers are involved in 10 short contacts:

Mol	Chain	Res	Type	Clashes	Symm-Clashes
3	A	1	OLF	4	0
3	C	2	OLF	6	0

The following is a two-dimensional graphical depiction of Mogul quality analysis of bond lengths, bond angles, torsion angles, and ring geometry for all instances of the Ligand of Interest. In addition, ligands with molecular weight > 250 and outliers as shown on the validation Tables will also be included. For torsion angles, if less than 5% of the Mogul distribution of torsion angles is within 10 degrees of the torsion angle in question, then that torsion angle is considered an outlier. Any bond that is central to one or more torsion angles identified as an outlier by Mogul will be highlighted in the graph. For rings, the root-mean-square deviation (RMSD) between the ring in question and similar rings identified by Mogul is calculated over all ring torsion angles. If the average RMSD is greater than 60 degrees and the minimal RMSD between the ring in question and any Mogul-identified rings is also greater than 60 degrees, then that ring is considered an outlier. The outliers are highlighted in purple. The color gray indicates Mogul did not find sufficient equivalents in the CSD to analyse the geometry.





5.7 Other polymers [i](#)

There are no such residues in this entry.

5.8 Polymer linkage issues [i](#)

There are no chain breaks in this entry.

6 Fit of model and data

6.1 Protein, DNA and RNA chains

In the following table, the column labelled ‘#RSRZ > 2’ contains the number (and percentage) of RSRZ outliers, followed by percent RSRZ outliers for the chain as percentile scores relative to all X-ray entries and entries of similar resolution. The OWAB column contains the minimum, median, 95th percentile and maximum values of the occupancy-weighted average B-factor per residue. The column labelled ‘Q < 0.9’ lists the number of (and percentage) of residues with an average occupancy less than 0.9.

Mol	Chain	Analysed	<RSRZ>	#RSRZ>2	OWAB(Å ²)	Q<0.9
1	A	230/233 (98%)	0.51	17 (7%) 20 22	22, 39, 69, 84	1 (0%)
1	C	230/233 (98%)	0.65	18 (7%) 19 20	26, 44, 69, 88	0
2	B	11/14 (78%)	0.58	1 (9%) 15 15	31, 40, 66, 75	0
2	D	11/14 (78%)	0.71	1 (9%) 15 15	36, 42, 69, 69	0
All	All	482/494 (97%)	0.59	37 (7%) 19 21	22, 42, 69, 88	1 (0%)

All (37) RSRZ outliers are listed below:

Mol	Chain	Res	Type	RSRZ
1	A	476	GLN	4.8
1	A	425	ILE	4.8
1	C	475	VAL	3.7
1	C	273	ILE	3.6
1	A	273	ILE	3.5
1	C	247	MET	3.4
1	A	449	HIS	3.3
1	A	428	PRO	3.2
1	A	429	GLU	3.2
1	C	429	GLU	3.2
1	C	446	THR	3.0
1	A	400	GLN	3.0
1	A	426	HIS	2.9
1	A	367	THR	2.8
1	C	449	HIS	2.8
1	C	367	THR	2.8
1	A	271	GLN	2.7
1	C	430	ASN	2.7
2	B	755	LYS	2.7
1	C	271	GLN	2.5
1	C	269	MET	2.4

Continued on next page...

Continued from previous page...

Mol	Chain	Res	Type	RSRZ
1	A	401	TYR	2.4
1	C	371	SER	2.4
1	A	269	MET	2.4
1	C	460	VAL	2.3
1	C	342	LYS	2.3
1	A	430	ASN	2.2
1	C	340	PHE	2.1
1	A	248	GLU	2.1
1	A	347	GLY	2.1
1	C	346	SER	2.1
1	C	463	HIS	2.1
1	A	247	MET	2.0
1	C	445	ARG	2.0
2	D	756	ASP	2.0
1	A	346	SER	2.0
1	C	274	THR	2.0

6.2 Non-standard residues in protein, DNA, RNA chains [i](#)

There are no non-standard protein/DNA/RNA residues in this entry.

6.3 Carbohydrates [i](#)

There are no oligosaccharides in this entry.

6.4 Ligands [i](#)

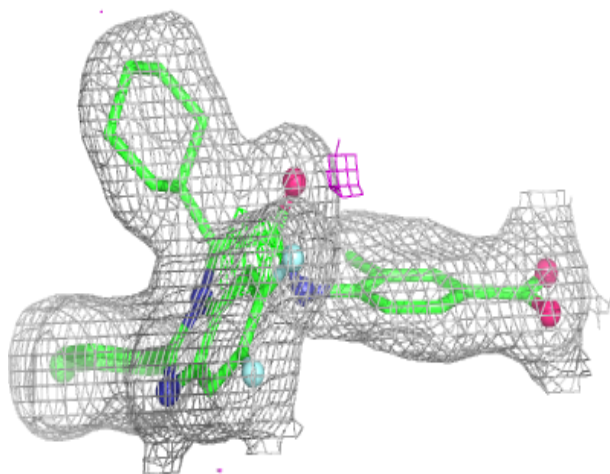
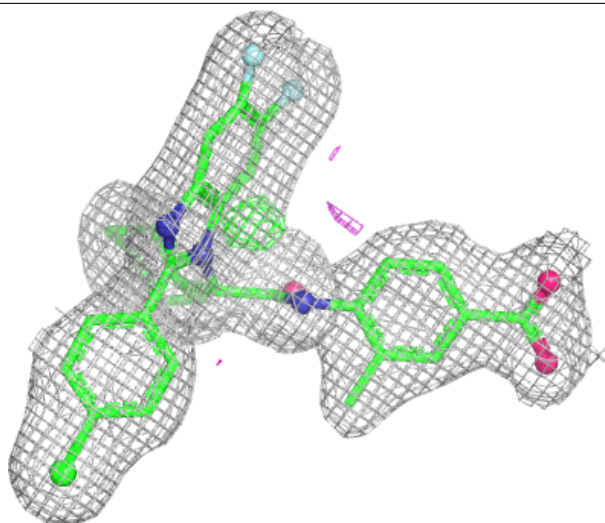
In the following table, the Atoms column lists the number of modelled atoms in the group and the number defined in the chemical component dictionary. The B-factors column lists the minimum, median, 95th percentile and maximum values of B factors of atoms in the group. The column labelled 'Q< 0.9' lists the number of atoms with occupancy less than 0.9.

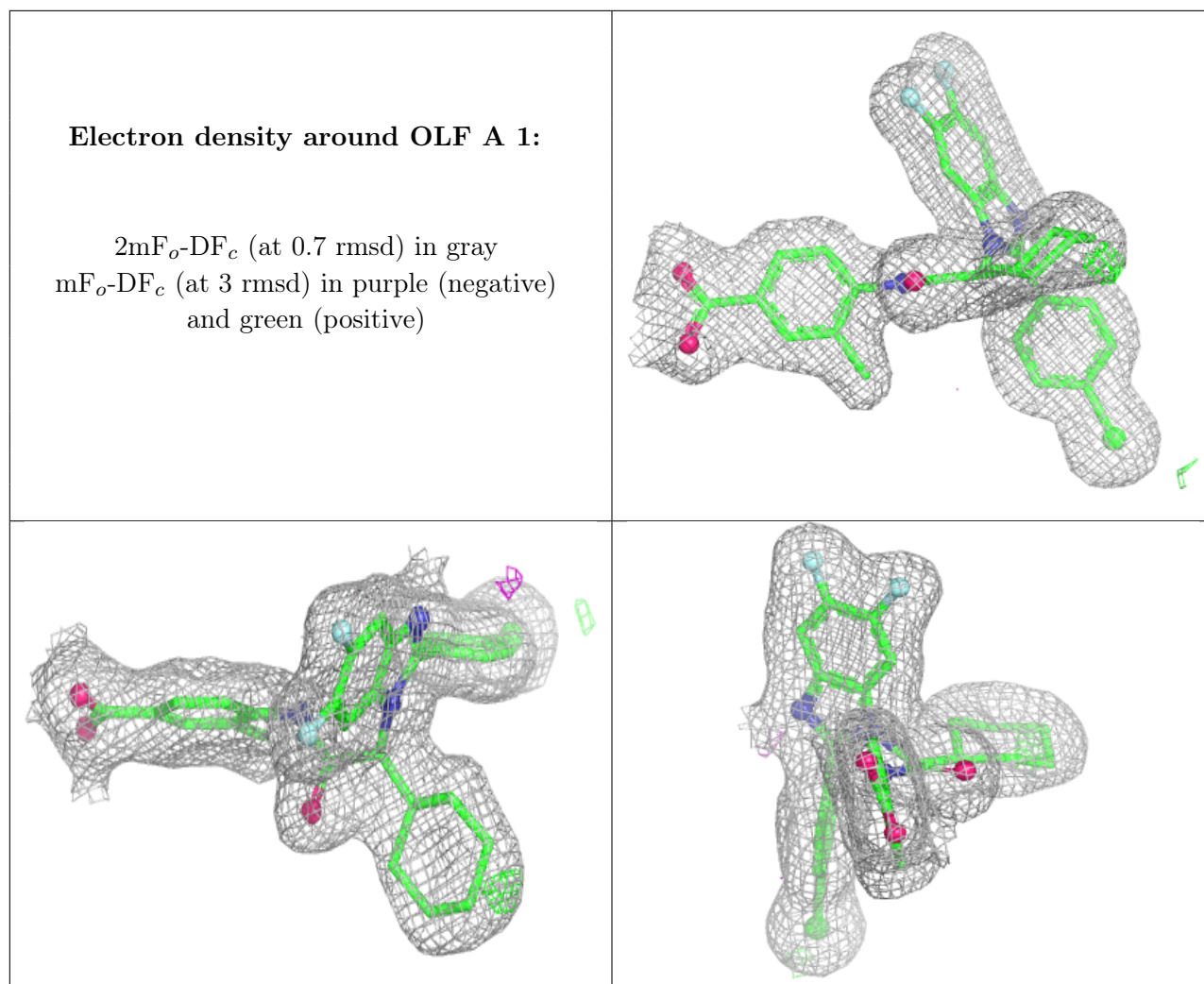
Mol	Type	Chain	Res	Atoms	RSCC	RSR	B-factors(Å ²)	Q<0.9
3	OLF	C	2	38/38	0.95	0.07	28,34,39,43	0
3	OLF	A	1	38/38	0.96	0.06	23,28,34,35	0

The following is a graphical depiction of the model fit to experimental electron density of all instances of the Ligand of Interest. In addition, ligands with molecular weight > 250 and outliers as shown on the geometry validation Tables will also be included. Each fit is shown from different orientation to approximate a three-dimensional view.

Electron density around OLF C 2:

$2mF_o-DF_c$ (at 0.7 rmsd) in gray
 mF_o-DF_c (at 3 rmsd) in purple (negative)
and green (positive)





6.5 Other polymers [i](#)

There are no such residues in this entry.