



wwPDB X-ray Structure Validation Summary Report ⓘ

Mar 20, 2026 – 10:02 AM UTC

PDB ID : 2OMB / pdb_00002omb
Title : Bence Jones KWR Protein- Immunoglobulin Light Chain Dimer, P3(1)21
Crystal Form
Authors : Makino, D.L.; Larson, S.B.; McPherson, A.
Deposited on : 2007-01-21
Resolution : 2.90 Å(reported)

This is a wwPDB X-ray Structure Validation Summary Report for a publicly released PDB entry.

We welcome your comments at validation@mail.wwpdb.org

A user guide is available at

<https://www.wwpdb.org/validation/2017/XrayValidationReportHelp>

with specific help available everywhere you see the ⓘ symbol.

The types of validation reports are described at

<http://www.wwpdb.org/validation/2017/FAQs#types>.

The following versions of software and data (see [references ⓘ](#)) were used in the production of this report:

MolProbity : 4-5-2 with Phenix2.0
Mogul : 2022.3.0, CSD as543be (2022)
Xtriage (Phenix) : 2.0
EDS : 3.0
Percentile statistics : 20250101.v01 (using entries in the PDB archive January 1st 2025)
CCP4 : 9.0.010 (Gargrove)
Density-Fitness : 1.0.12
Ideal geometry (proteins) : Engh & Huber (2001)
Ideal geometry (DNA, RNA) : Parkinson et al. (1996)
Validation Pipeline (wwPDB-VP) : 2.49

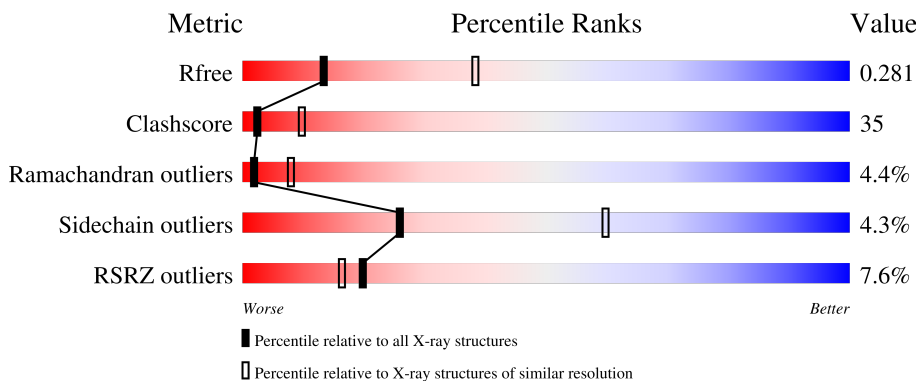
1 Overall quality at a glance

The following experimental techniques were used to determine the structure:

X-RAY DIFFRACTION

The reported resolution of this entry is 2.90 Å.

Percentile scores (ranging between 0-100) for global validation metrics of the entry are shown in the following graphic. The table shows the number of entries on which the scores are based.



Metric	Whole archive (#Entries)	Similar resolution (#Entries, resolution range(Å))
R_{free}	180053	2481 (2.90-2.90)
Clashscore	190562	2690 (2.90-2.90)
Ramachandran outliers	187476	2623 (2.90-2.90)
Sidechain outliers	187428	2625 (2.90-2.90)
RSRZ outliers	180081	2481 (2.90-2.90)

The table below summarises the geometric issues observed across the polymeric chains and their fit to the electron density. The red, orange, yellow and green segments of the lower bar indicate the fraction of residues that contain outliers for ≥ 3 , 2, 1 and 0 types of geometric quality criteria respectively. A grey segment represents the fraction of residues that are not modelled. The numeric value for each fraction is indicated below the corresponding segment, with a dot representing fractions $\leq 5\%$. The upper red bar (where present) indicates the fraction of residues that have poor fit to the electron density. The numeric value is given above the bar.

Mol	Chain	Length	Quality of chain
1	A	217	
1	B	217	
1	C	217	
1	D	217	

The following table lists non-polymeric compounds, carbohydrate monomers and non-standard

residues in protein, DNA, RNA chains that are outliers for geometric or electron-density-fit criteria:

Mol	Type	Chain	Res	Chirality	Geometry	Clashes	Electron density
3	IPH	A	2001	-	X	-	-
3	IPH	D	2002	-	X	-	-

2 Entry composition [i](#)

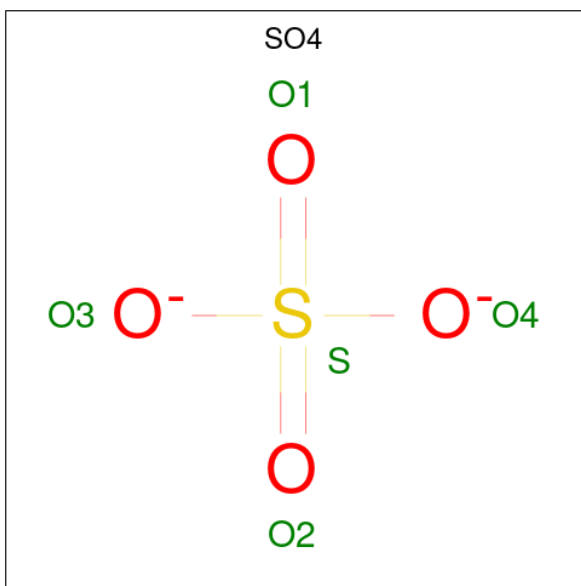
There are 4 unique types of molecules in this entry. The entry contains 6459 atoms, of which 0 are hydrogens and 0 are deuteriums.

In the tables below, the ZeroOcc column contains the number of atoms modelled with zero occupancy, the AltConf column contains the number of residues with at least one atom in alternate conformation and the Trace column contains the number of residues modelled with at most 2 atoms.

- Molecule 1 is a protein called Bence Jones KWR Protein - Immunoglobulin Light Chain.

Mol	Chain	Residues	Atoms					ZeroOcc	AltConf	Trace
			Total	C	N	O	S			
1	A	217	1596	991	267	333	5	0	0	0
1	B	217	1596	991	267	333	5	0	0	0
1	C	217	1596	991	267	333	5	0	0	0
1	D	217	1596	991	267	333	5	0	0	0

- Molecule 2 is SULFATE ION (CCD ID: SO4) (formula: O₄S).



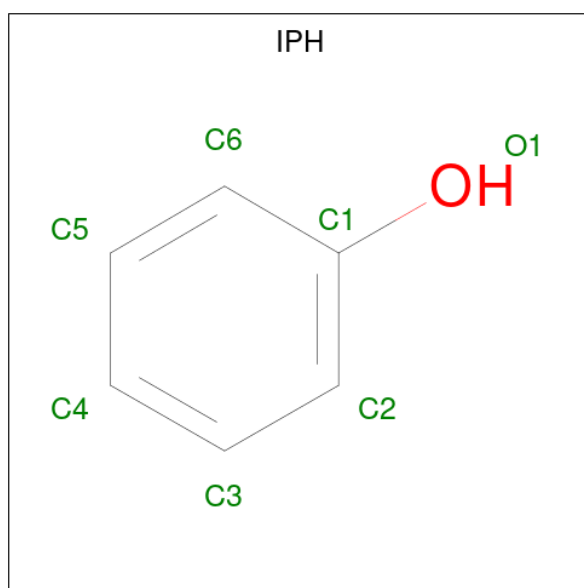
Mol	Chain	Residues	Atoms			ZeroOcc	AltConf
			Total	O	S		
2	A	1	5	4	1	0	0
2	A	1	5	4	1	0	0

Continued on next page...

Continued from previous page...

Mol	Chain	Residues	Atoms			ZeroOcc	AltConf
2	A	1	Total	O	S	0	0
			5	4	1		
2	B	1	Total	O	S	0	0
			5	4	1		
2	B	1	Total	O	S	0	0
			5	4	1		
2	C	1	Total	O	S	0	0
			5	4	1		
2	C	1	Total	O	S	0	0
			5	4	1		
2	D	1	Total	O	S	0	0
			5	4	1		
2	D	1	Total	O	S	0	0
			5	4	1		

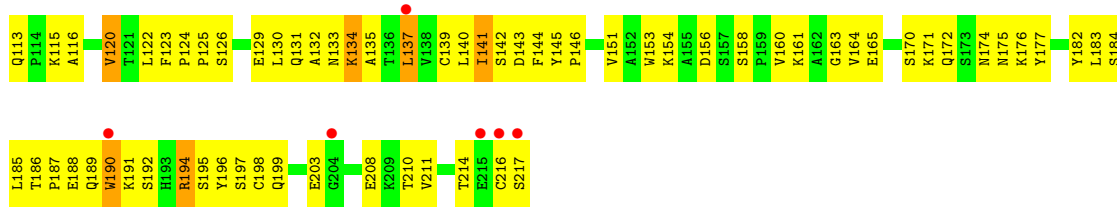
- Molecule 3 is PHENOL (CCD ID: IPH) (formula: C₆H₆O).



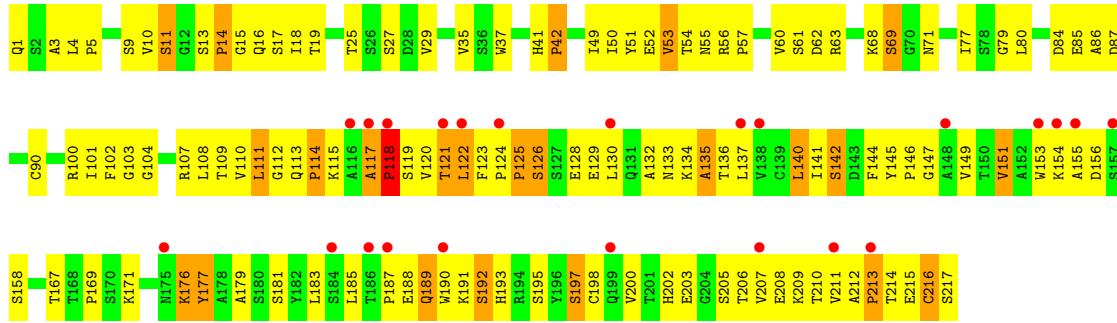
Mol	Chain	Residues	Atoms			ZeroOcc	AltConf
3	A	1	Total	C	O	0	0
			7	6	1		
3	D	1	Total	C	O	0	0
			7	6	1		

- Molecule 4 is water.

Mol	Chain	Residues	Atoms	ZeroOcc	AltConf
4	A	8	Total O 8 8	0	0
4	B	1	Total O 1 1	0	0
4	C	3	Total O 3 3	0	0
4	D	4	Total O 4 4	0	0



● Molecule 1: Bence Jones KWR Protein - Immunoglobulin Light Chain



4 Data and refinement statistics i

Property	Value	Source
Space group	P 31 2 1	Depositor
Cell constants a, b, c, α , β , γ	153.52Å 153.52Å 93.95Å 90.00° 90.00° 120.00°	Depositor
Resolution (Å)	40.00 – 2.90 40.00 – 2.90	Depositor EDS
% Data completeness (in resolution range)	91.5 (40.00-2.90) 91.4 (40.00-2.90)	Depositor EDS
R_{merge}	(Not available)	Depositor
R_{sym}	0.10	Depositor
$\langle I/\sigma(I) \rangle$ ¹	3.40 (at 2.91Å)	Xtrriage
Refinement program	CNS 1.1	Depositor
R, R_{free}	0.235 , 0.284 0.232 , 0.281	Depositor DCC
R_{free} test set	1820 reflections (6.58%)	wwPDB-VP
Wilson B-factor (Å ²)	61.8	Xtrriage
Anisotropy	0.080	Xtrriage
Bulk solvent k_{sol} (e/Å ³), B_{sol} (Å ²)	0.35 , 68.0	EDS
L-test for twinning ²	$\langle L \rangle = 0.46$, $\langle L^2 \rangle = 0.29$	Xtrriage
Estimated twinning fraction	0.049 for -h,-k,l	Xtrriage
F_o, F_c correlation	0.93	EDS
Total number of atoms	6459	wwPDB-VP
Average B, all atoms (Å ²)	68.0	wwPDB-VP

Xtrriage's analysis on translational NCS is as follows: *The analyses of the Patterson function reveals a significant off-origin peak that is 61.55 % of the origin peak, indicating pseudo-translational symmetry. The chance of finding a peak of this or larger height randomly in a structure without pseudo-translational symmetry is equal to 1.2889e-05. The detected translational NCS is most likely also responsible for the elevated intensity ratio.*

¹Intensities estimated from amplitudes.

²Theoretical values of $\langle |L| \rangle$, $\langle L^2 \rangle$ for acentric reflections are 0.5, 0.333 respectively for untwinned datasets, and 0.375, 0.2 for perfectly twinned datasets.

5 Model quality [i](#)

5.1 Standard geometry [i](#)

Bond lengths and bond angles in the following residue types are not validated in this section: PCA, IPH, SO4

The Z score for a bond length (or angle) is the number of standard deviations the observed value is removed from the expected value. A bond length (or angle) with $|Z| > 5$ is considered an outlier worth inspection. RMSZ is the root-mean-square of all Z scores of the bond lengths (or angles).

Mol	Chain	Bond lengths		Bond angles	
		RMSZ	# Z >5	RMSZ	# Z >5
1	A	0.56	0/1628	1.00	3/2224 (0.1%)
1	B	0.44	0/1628	0.95	4/2224 (0.2%)
1	C	0.51	0/1628	0.97	1/2224 (0.0%)
1	D	0.45	0/1628	0.99	7/2224 (0.3%)
All	All	0.49	0/6512	0.98	15/8896 (0.2%)

There are no bond length outliers.

The worst 5 of 15 bond angle outliers are listed below:

Mol	Chain	Res	Type	Atoms	Z	Observed(°)	Ideal(°)
1	D	142	SER	N-CA-C	6.83	119.72	108.99
1	B	214	THR	N-CA-C	6.81	116.86	107.73
1	A	98	THR	CA-C-N	6.29	125.71	118.85
1	A	98	THR	C-N-CA	6.29	125.71	118.85
1	A	186	THR	N-CA-C	-6.23	101.23	110.20

There are no chirality outliers.

There are no planarity outliers.

5.2 Too-close contacts [i](#)

In the following table, the Non-H and H(model) columns list the number of non-hydrogen atoms and hydrogen atoms in the chain respectively. The H(added) column lists the number of hydrogen atoms added and optimized by MolProbity. The Clashes column lists the number of clashes within the asymmetric unit, whereas Symm-Clashes lists symmetry-related clashes.

Mol	Chain	Non-H	H(model)	H(added)	Clashes	Symm-Clashes
1	A	1596	0	1529	91	0
1	B	1596	0	1529	146	0

Continued on next page...

Continued from previous page...

Mol	Chain	Non-H	H(model)	H(added)	Clashes	Symm-Clashes
1	C	1596	0	1529	98	0
1	D	1596	0	1529	130	0
2	A	15	0	0	0	0
2	B	10	0	0	0	0
2	C	10	0	0	0	0
2	D	10	0	0	0	0
3	A	7	0	6	0	0
3	D	7	0	6	0	0
4	A	8	0	0	0	0
4	B	1	0	0	0	0
4	C	3	0	0	0	0
4	D	4	0	0	0	0
All	All	6459	0	6128	443	0

The all-atom clashscore is defined as the number of clashes found per 1000 atoms (including hydrogen atoms). The all-atom clashscore for this structure is 35.

The worst 5 of 443 close contacts within the same asymmetric unit are listed below, sorted by their clash magnitude.

Atom-1	Atom-2	Interatomic distance (Å)	Clash overlap (Å)
1:D:169:PRO:HG3	1:D:179:ALA:HB2	1.43	0.99
1:C:124:PRO:HB3	1:C:211:VAL:HG11	1.49	0.92
1:D:195:SER:HA	1:D:212:ALA:HB2	1.51	0.92
1:B:19:THR:HG22	1:B:76:THR:HB	1.55	0.87
1:B:35:VAL:HG22	1:B:53:VAL:HA	1.57	0.86

There are no symmetry-related clashes.

5.3 Torsion angles [i](#)

5.3.1 Protein backbone [i](#)

In the following table, the Percentiles column shows the percent Ramachandran outliers of the chain as a percentile score with respect to all X-ray entries followed by that with respect to entries of similar resolution.

The Analysed column shows the number of residues for which the backbone conformation was analysed, and the total number of residues.

Mol	Chain	Analysed	Favoured	Allowed	Outliers	Percentiles	
1	A	215/217 (99%)	189 (88%)	23 (11%)	3 (1%)	9	30
1	B	215/217 (99%)	166 (77%)	35 (16%)	14 (6%)	1	3
1	C	215/217 (99%)	177 (82%)	34 (16%)	4 (2%)	6	23
1	D	215/217 (99%)	164 (76%)	34 (16%)	17 (8%)	1	2
All	All	860/868 (99%)	696 (81%)	126 (15%)	38 (4%)	2	8

5 of 38 Ramachandran outliers are listed below:

Mol	Chain	Res	Type
1	A	3	ALA
1	A	97	SER
1	A	214	THR
1	B	111	LEU
1	B	115	LYS

5.3.2 Protein sidechains [i](#)

In the following table, the Percentiles column shows the percent sidechain outliers of the chain as a percentile score with respect to all X-ray entries followed by that with respect to entries of similar resolution.

The Analysed column shows the number of residues for which the sidechain conformation was analysed, and the total number of residues.

Mol	Chain	Analysed	Rotameric	Outliers	Percentiles	
1	A	179/179 (100%)	171 (96%)	8 (4%)	24	58
1	B	179/179 (100%)	174 (97%)	5 (3%)	38	72
1	C	179/179 (100%)	169 (94%)	10 (6%)	19	50
1	D	179/179 (100%)	171 (96%)	8 (4%)	24	58
All	All	716/716 (100%)	685 (96%)	31 (4%)	26	60

5 of 31 residues with a non-rotameric sidechain are listed below:

Mol	Chain	Res	Type
1	C	28	ASP
1	D	111	LEU
1	C	98	THR
1	D	122	LEU
1	D	17	SER

Sometimes sidechains can be flipped to improve hydrogen bonding and reduce clashes. 5 of 11 such sidechains are listed below:

Mol	Chain	Res	Type
1	C	39	GLN
1	C	41	HIS
1	D	175	ASN
1	D	55	ASN
1	B	16	GLN

5.3.3 RNA [i](#)

There are no RNA molecules in this entry.

5.4 Non-standard residues in protein, DNA, RNA chains [i](#)

4 non-standard protein/DNA/RNA residues are modelled in this entry.

In the following table, the Counts columns list the number of bonds (or angles) for which Mogul statistics could be retrieved, the number of bonds (or angles) that are observed in the model and the number of bonds (or angles) that are defined in the Chemical Component Dictionary. The Link column lists molecule types, if any, to which the group is linked. The Z score for a bond length (or angle) is the number of standard deviations the observed value is removed from the expected value. A bond length (or angle) with $|Z| > 2$ is considered an outlier worth inspection. RMSZ is the root-mean-square of all Z scores of the bond lengths (or angles).

Mol	Type	Chain	Res	Link	Bond lengths			Bond angles		
					Counts	RMSZ	$\# Z > 2$	Counts	RMSZ	$\# Z > 2$
1	PCA	A	1	1	7,8,9	1.27	0	9,10,12	1.07	0
1	PCA	B	1	1	7,8,9	1.05	0	9,10,12	1.18	0
1	PCA	D	1	1	7,8,9	1.24	1 (14%)	9,10,12	1.12	0
1	PCA	C	1	1	7,8,9	1.33	1 (14%)	9,10,12	1.24	0

In the following table, the Chirals column lists the number of chiral outliers, the number of chiral centers analysed, the number of these observed in the model and the number defined in the Chemical Component Dictionary. Similar counts are reported in the Torsion and Rings columns. '-' means no outliers of that kind were identified.

Mol	Type	Chain	Res	Link	Chirals	Torsions	Rings
1	PCA	A	1	1	-	0/0/11/13	0/1/1/1
1	PCA	B	1	1	-	0/0/11/13	0/1/1/1
1	PCA	D	1	1	-	0/0/11/13	0/1/1/1
1	PCA	C	1	1	-	0/0/11/13	0/1/1/1

All (2) bond length outliers are listed below:

Mol	Chain	Res	Type	Atoms	Z	Observed(Å)	Ideal(Å)
1	C	1	PCA	CA-N	2.60	1.49	1.46
1	D	1	PCA	CA-N	2.18	1.49	1.46

There are no bond angle outliers.

There are no chirality outliers.

There are no torsion outliers.

There are no ring outliers.

No monomer is involved in short contacts.

5.5 Carbohydrates [i](#)

There are no oligosaccharides in this entry.

5.6 Ligand geometry [i](#)

11 ligands are modelled in this entry.

In the following table, the Counts columns list the number of bonds (or angles) for which Mogul statistics could be retrieved, the number of bonds (or angles) that are observed in the model and the number of bonds (or angles) that are defined in the Chemical Component Dictionary. The Link column lists molecule types, if any, to which the group is linked. The Z score for a bond length (or angle) is the number of standard deviations the observed value is removed from the expected value. A bond length (or angle) with $|Z| > 2$ is considered an outlier worth inspection. RMSZ is the root-mean-square of all Z scores of the bond lengths (or angles).

Mol	Type	Chain	Res	Link	Bond lengths			Bond angles		
					Counts	RMSZ	# Z > 2	Counts	RMSZ	# Z > 2
2	SO4	A	1007	-	4,4,4	1.86	2 (50%)	6,6,6	0.81	0
2	SO4	B	1002	-	4,4,4	1.85	2 (50%)	6,6,6	0.85	0
2	SO4	D	1005	-	4,4,4	1.82	2 (50%)	6,6,6	0.82	0
2	SO4	D	1004	-	4,4,4	1.87	2 (50%)	6,6,6	0.85	0
2	SO4	A	1001	-	4,4,4	1.85	2 (50%)	6,6,6	0.91	0
3	IPH	D	2002	-	7,7,7	3.13	6 (85%)	8,8,8	1.94	3 (37%)
2	SO4	B	1003	-	4,4,4	1.80	2 (50%)	6,6,6	0.88	0
2	SO4	A	1008	-	4,4,4	1.89	2 (50%)	6,6,6	0.81	0
2	SO4	C	1009	-	4,4,4	1.83	2 (50%)	6,6,6	0.82	0
2	SO4	C	1006	-	4,4,4	1.91	2 (50%)	6,6,6	0.81	0

Mol	Type	Chain	Res	Link	Bond lengths			Bond angles		
					Counts	RMSZ	# Z > 2	Counts	RMSZ	# Z > 2
3	IPH	A	2001	-	7,7,7	2.81	5 (71%)	8,8,8	2.00	3 (37%)

In the following table, the Chirals column lists the number of chiral outliers, the number of chiral centers analysed, the number of these observed in the model and the number defined in the Chemical Component Dictionary. Similar counts are reported in the Torsion and Rings columns. '-' means no outliers of that kind were identified.

Mol	Type	Chain	Res	Link	Chirals	Torsions	Rings
3	IPH	D	2002	-	-	-	0/1/1/1
3	IPH	A	2001	-	-	-	0/1/1/1

The worst 5 of 29 bond length outliers are listed below:

Mol	Chain	Res	Type	Atoms	Z	Observed(Å)	Ideal(Å)
3	D	2002	IPH	C5-C6	4.83	1.47	1.38
3	A	2001	IPH	C5-C6	4.40	1.46	1.38
3	D	2002	IPH	C3-C2	3.88	1.45	1.38
3	A	2001	IPH	C3-C2	3.37	1.44	1.38
3	D	2002	IPH	C2-C1	3.33	1.45	1.39

The worst 5 of 6 bond angle outliers are listed below:

Mol	Chain	Res	Type	Atoms	Z	Observed(°)	Ideal(°)
3	A	2001	IPH	C6-C1-C2	3.75	125.73	119.77
3	D	2002	IPH	C6-C1-C2	3.63	125.54	119.77
3	A	2001	IPH	C3-C2-C1	-2.75	115.58	119.29
3	D	2002	IPH	C3-C2-C1	-2.51	115.89	119.29
3	D	2002	IPH	C5-C6-C1	-2.19	116.33	119.29

There are no chirality outliers.

There are no torsion outliers.

There are no ring outliers.

No monomer is involved in short contacts.

5.7 Other polymers [i](#)

There are no such residues in this entry.

5.8 Polymer linkage issues

There are no chain breaks in this entry.

6 Fit of model and data [i](#)

6.1 Protein, DNA and RNA chains [i](#)

In the following table, the column labelled ‘#RSRZ > 2’ contains the number (and percentage) of RSRZ outliers, followed by percent RSRZ outliers for the chain as percentile scores relative to all X-ray entries and entries of similar resolution. The OWAB column contains the minimum, median, 95th percentile and maximum values of the occupancy-weighted average B-factor per residue. The column labelled ‘Q < 0.9’ lists the number of (and percentage) of residues with an average occupancy less than 0.9.

Mol	Chain	Analysed	<RSRZ>	#RSRZ>2	OWAB(Å ²)	Q<0.9
1	A	216/217 (99%)	-0.10	2 (0%) 81 75	26, 48, 79, 128	0
1	B	216/217 (99%)	0.88	35 (16%) 4 4	34, 72, 121, 127	0
1	C	216/217 (99%)	0.13	6 (2%) 55 46	28, 51, 122, 143	0
1	D	216/217 (99%)	0.60	23 (10%) 11 9	33, 74, 128, 146	0
All	All	864/868 (99%)	0.38	66 (7%) 20 16	26, 55, 122, 146	0

The worst 5 of 66 RSRZ outliers are listed below:

Mol	Chain	Res	Type	RSRZ
1	B	195	SER	5.5
1	B	166	THR	5.3
1	B	183	LEU	5.2
1	D	155	ALA	4.9
1	B	164	VAL	4.6

6.2 Non-standard residues in protein, DNA, RNA chains [i](#)

In the following table, the Atoms column lists the number of modelled atoms in the group and the number defined in the chemical component dictionary. The B-factors column lists the minimum, median, 95th percentile and maximum values of B factors of atoms in the group. The column labelled ‘Q < 0.9’ lists the number of atoms with occupancy less than 0.9.

Mol	Type	Chain	Res	Atoms	RSCC	RSR	B-factors(Å ²)	Q<0.9
1	PCA	D	1	8/9	0.51	0.16	87,91,93,93	0
1	PCA	A	1	8/9	0.80	0.14	77,79,80,80	0
1	PCA	B	1	8/9	0.81	0.16	81,83,84,84	0
1	PCA	C	1	8/9	0.84	0.15	76,79,80,81	0

6.3 Carbohydrates [i](#)

There are no oligosaccharides in this entry.

6.4 Ligands [i](#)

In the following table, the Atoms column lists the number of modelled atoms in the group and the number defined in the chemical component dictionary. The B-factors column lists the minimum, median, 95th percentile and maximum values of B factors of atoms in the group. The column labelled 'Q< 0.9' lists the number of atoms with occupancy less than 0.9.

Mol	Type	Chain	Res	Atoms	RSCC	RSR	B-factors(\AA^2)	Q<0.9
3	IPH	A	2001	7/7	0.77	0.38	53,53,58,58	0
2	SO4	A	1007	5/5	0.79	0.08	133,134,134,134	0
2	SO4	B	1002	5/5	0.80	0.09	104,104,105,105	0
2	SO4	B	1003	5/5	0.82	0.15	91,92,93,93	0
2	SO4	D	1004	5/5	0.83	0.11	93,94,94,95	0
3	IPH	D	2002	7/7	0.84	0.31	43,45,48,50	0
2	SO4	D	1005	5/5	0.89	0.10	94,94,94,95	0
2	SO4	A	1008	5/5	0.90	0.17	106,107,108,108	0
2	SO4	A	1001	5/5	0.92	0.08	74,75,76,76	0
2	SO4	C	1009	5/5	0.93	0.15	97,97,98,99	0
2	SO4	C	1006	5/5	0.96	0.06	62,63,64,65	0

6.5 Other polymers [i](#)

There are no such residues in this entry.