



Full wwPDB X-ray Structure Validation Report ⓘ

Mar 6, 2026 – 04:39 PM UTC

PDB ID : 2OOS / pdb_00002oos
Title : Crystal structure of plasmodium falciparum enoyl ACP reductase with triclosan reductase
Authors : Tsai, H.
Deposited on : 2007-01-26
Resolution : 2.10 Å (reported)

This is a Full wwPDB X-ray Structure Validation Report for a publicly released PDB entry.

We welcome your comments at validation@mail.wwpdb.org

A user guide is available at

<https://www.wwpdb.org/validation/2017/XrayValidationReportHelp>

with specific help available everywhere you see the ⓘ symbol.

The types of validation reports are described at

<http://www.wwpdb.org/validation/2017/FAQs#types>.

The following versions of software and data (see [references ⓘ](#)) were used in the production of this report:

MolProbity : 4-5-2 with Phenix2.0
Mogul : 2022.3.0, CSD as543be (2022)
Xtriage (Phenix) : 2.0
EDS : 3.0
Buster-report : wwPDB partial adaption of 1.1.7 (2018)
Percentile statistics : 20250101.v01 (using entries in the PDB archive January 1st 2025)
CCP4 : 9.0.010 (Gargrove)
Density-Fitness : 1.0.12
Ideal geometry (proteins) : Engh & Huber (2001)
Ideal geometry (DNA, RNA) : Parkinson et al. (1996)
Validation Pipeline (wwPDB-VP) : 2.49

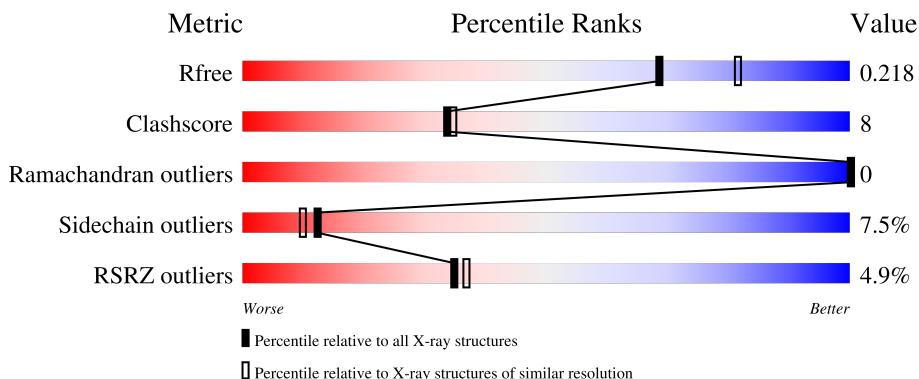
1 Overall quality at a glance

The following experimental techniques were used to determine the structure:

X-RAY DIFFRACTION

The reported resolution of this entry is 2.10 Å.

Percentile scores (ranging between 0-100) for global validation metrics of the entry are shown in the following graphic. The table shows the number of entries on which the scores are based.



Metric	Whole archive (#Entries)	Similar resolution (#Entries, resolution range(Å))
R_{free}	180053	6658 (2.10-2.10)
Clashscore	190562	7164 (2.10-2.10)
Ramachandran outliers	187476	7099 (2.10-2.10)
Sidechain outliers	187428	7100 (2.10-2.10)
RSRZ outliers	180081	6662 (2.10-2.10)

The table below summarises the geometric issues observed across the polymeric chains and their fit to the electron density. The red, orange, yellow and green segments of the lower bar indicate the fraction of residues that contain outliers for ≥ 3 , 2, 1 and 0 types of geometric quality criteria respectively. A grey segment represents the fraction of residues that are not modelled. The numeric value for each fraction is indicated below the corresponding segment, with a dot representing fractions $\leq 5\%$. The upper red bar (where present) indicates the fraction of residues that have poor fit to the electron density. The numeric value is given above the bar.

Mol	Chain	Length	Quality of chain
1	A	338	 4% 69% 13% .. 15%
1	B	338	 4% 68% 13% • 16%

2 Entry composition [i](#)

There are 4 unique types of molecules in this entry. The entry contains 4805 atoms, of which 0 are hydrogens and 0 are deuteriums.

In the tables below, the ZeroOcc column contains the number of atoms modelled with zero occupancy, the AltConf column contains the number of residues with at least one atom in alternate conformation and the Trace column contains the number of residues modelled with at most 2 atoms.

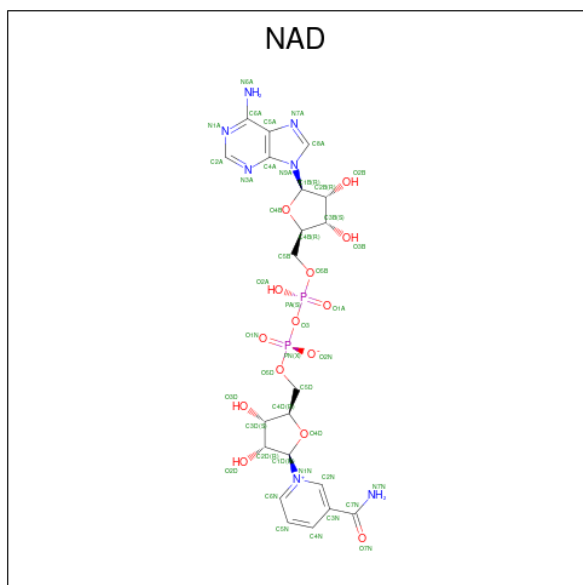
- Molecule 1 is a protein called Enoyl-acyl carrier reductase.

Mol	Chain	Residues	Atoms					ZeroOcc	AltConf	Trace
			Total	C	N	O	S			
1	A	286	Total	C	N	O	S	0	0	0
			2259	1439	379	430	11			
1	B	283	Total	C	N	O	S	0	0	0
			2233	1423	375	424	11			

There are 16 discrepancies between the modelled and reference sequences:

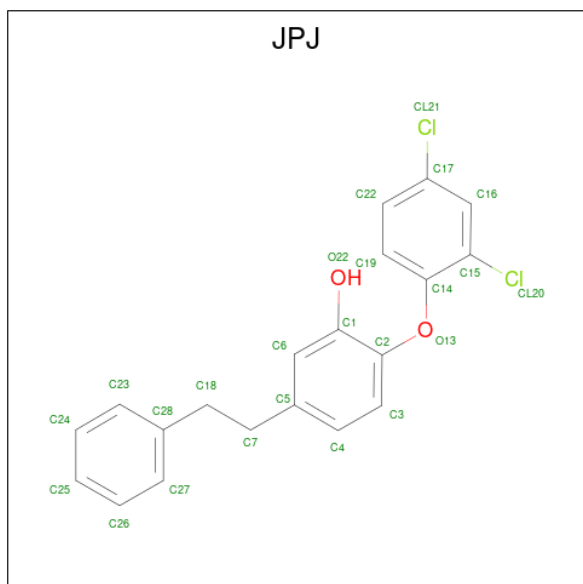
Chain	Residue	Modelled	Actual	Comment	Reference
A	88	MET	-	cloning artifact	UNP Q9BH77
A	89	VAL	-	cloning artifact	UNP Q9BH77
A	90	HIS	-	expression tag	UNP Q9BH77
A	91	HIS	-	expression tag	UNP Q9BH77
A	92	HIS	-	expression tag	UNP Q9BH77
A	93	HIS	-	expression tag	UNP Q9BH77
A	94	HIS	-	expression tag	UNP Q9BH77
A	95	HIS	-	expression tag	UNP Q9BH77
B	88	MET	-	cloning artifact	UNP Q9BH77
B	89	VAL	-	cloning artifact	UNP Q9BH77
B	90	HIS	-	expression tag	UNP Q9BH77
B	91	HIS	-	expression tag	UNP Q9BH77
B	92	HIS	-	expression tag	UNP Q9BH77
B	93	HIS	-	expression tag	UNP Q9BH77
B	94	HIS	-	expression tag	UNP Q9BH77
B	95	HIS	-	expression tag	UNP Q9BH77

- Molecule 2 is NICOTINAMIDE-ADENINE-DINUCLEOTIDE (CCD ID: NAD) (formula: $C_{21}H_{27}N_7O_{14}P_2$).



Mol	Chain	Residues	Atoms				ZeroOcc	AltConf	
			Total	C	N	O			P
2	A	1	44	21	7	14	2	0	0
2	B	1	44	21	7	14	2	0	0

- Molecule 3 is 2-(2,4-DICHLOROPHENOXY)-5-(2-PHENYLETHYL)PHENOL (CCD ID: JPJ) (formula: $C_{20}H_{16}Cl_2O_2$).



Mol	Chain	Residues	Atoms			ZeroOcc	AltConf	
			Total	C	Cl			O
3	A	1	24	20	2	2	0	0

Continued on next page...

Continued from previous page...

Mol	Chain	Residues	Atoms				ZeroOcc	AltConf
			Total	C	Cl	O		
3	B	1	24	20	2	2	0	0

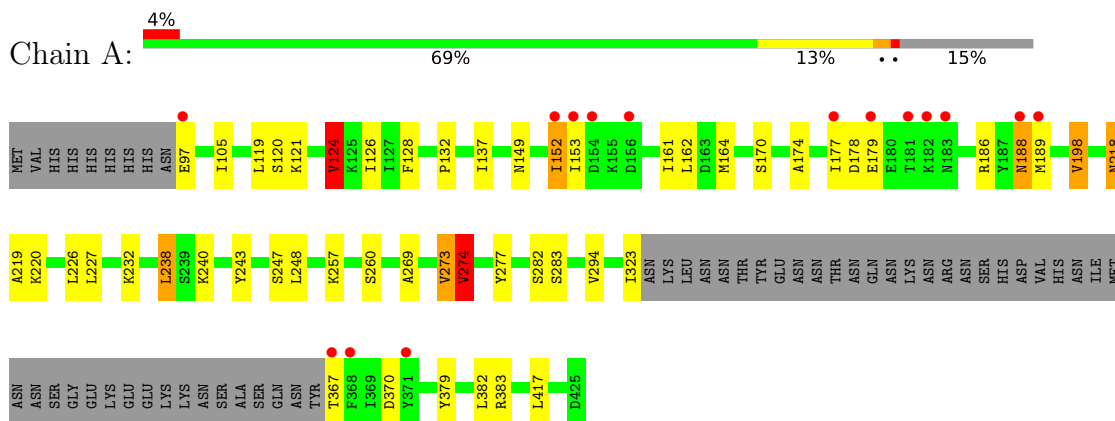
- Molecule 4 is water.

Mol	Chain	Residues	Atoms		ZeroOcc	AltConf
4	A	86	Total	O	0	0
			86	86		
4	B	91	Total	O	0	0
			91	91		

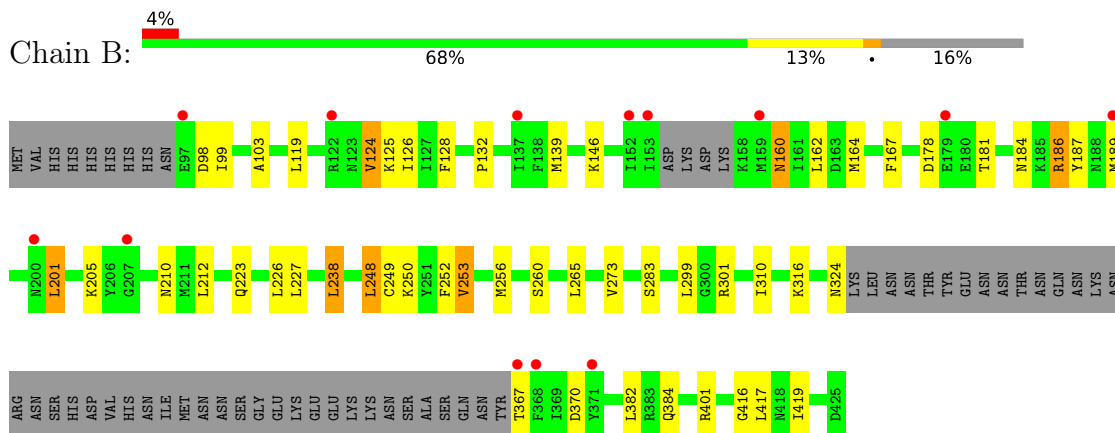
3 Residue-property plots [i](#)

These plots are drawn for all protein, RNA, DNA and oligosaccharide chains in the entry. The first graphic for a chain summarises the proportions of the various outlier classes displayed in the second graphic. The second graphic shows the sequence view annotated by issues in geometry and electron density. Residues are color-coded according to the number of geometric quality criteria for which they contain at least one outlier: green = 0, yellow = 1, orange = 2 and red = 3 or more. A red dot above a residue indicates a poor fit to the electron density ($RSRZ > 2$). Stretches of 2 or more consecutive residues without any outlier are shown as a green connector. Residues present in the sample, but not in the model, are shown in grey.

- Molecule 1: Enoyl-acyl carrier reductase



- Molecule 1: Enoyl-acyl carrier reductase



4 Data and refinement statistics

Property	Value	Source
Space group	P 43 21 2	Depositor
Cell constants a, b, c, α , β , γ	131.22Å 131.22Å 83.16Å 90.00° 90.00° 90.00°	Depositor
Resolution (Å)	92.85 – 2.10 92.79 – 2.10	Depositor EDS
% Data completeness (in resolution range)	99.7 (92.85-2.10) 99.7 (92.79-2.10)	Depositor EDS
R_{merge}	(Not available)	Depositor
R_{sym}	(Not available)	Depositor
$\langle I/\sigma(I) \rangle$ ¹	3.94 (at 2.10Å)	Xtrriage
Refinement program	REFMAC 5.2.0019	Depositor
R, R_{free}	0.192 , 0.227 0.184 , 0.218	Depositor DCC
R_{free} test set	2160 reflections (5.03%)	wwPDB-VP
Wilson B-factor (Å ²)	38.9	Xtrriage
Anisotropy	0.189	Xtrriage
Bulk solvent k_{sol} (e/Å ³), B_{sol} (Å ²)	0.36 , 32.8	EDS
L-test for twinning ²	$\langle L \rangle = 0.50$, $\langle L^2 \rangle = 0.33$	Xtrriage
Estimated twinning fraction	No twinning to report.	Xtrriage
F_o, F_c correlation	0.96	EDS
Total number of atoms	4805	wwPDB-VP
Average B, all atoms (Å ²)	39.0	wwPDB-VP

Xtrriage's analysis on translational NCS is as follows: *The largest off-origin peak in the Patterson function is 3.53% of the height of the origin peak. No significant pseudotranslation is detected.*

¹Intensities estimated from amplitudes.

²Theoretical values of $\langle |L| \rangle$, $\langle L^2 \rangle$ for acentric reflections are 0.5, 0.333 respectively for untwinned datasets, and 0.375, 0.2 for perfectly twinned datasets.

5 Model quality [i](#)

5.1 Standard geometry [i](#)

Bond lengths and bond angles in the following residue types are not validated in this section: JPJ, NAD

The Z score for a bond length (or angle) is the number of standard deviations the observed value is removed from the expected value. A bond length (or angle) with $|Z| > 5$ is considered an outlier worth inspection. RMSZ is the root-mean-square of all Z scores of the bond lengths (or angles).

Mol	Chain	Bond lengths		Bond angles	
		RMSZ	# $ Z > 5$	RMSZ	# $ Z > 5$
1	A	1.04	4/2300 (0.2%)	1.06	6/3101 (0.2%)
1	B	1.01	0/2273	1.04	2/3065 (0.1%)
All	All	1.02	4/4573 (0.1%)	1.05	8/6166 (0.1%)

All (4) bond length outliers are listed below:

Mol	Chain	Res	Type	Atoms	Z	Observed(Å)	Ideal(Å)
1	A	274	VAL	CA-CB	8.50	1.62	1.54
1	A	124	VAL	CA-CB	5.74	1.61	1.54
1	A	273	VAL	CA-CB	5.59	1.61	1.54
1	A	198	VAL	CA-CB	5.24	1.61	1.54

All (8) bond angle outliers are listed below:

Mol	Chain	Res	Type	Atoms	Z	Observed(°)	Ideal(°)
1	A	274	VAL	CB-CA-C	8.65	119.30	111.08
1	B	132	PRO	N-CA-C	6.93	119.15	110.70
1	A	132	PRO	N-CA-C	6.38	118.48	110.70
1	A	273	VAL	N-CA-C	6.08	116.91	108.89
1	A	188	ASN	N-CA-C	5.92	117.73	111.28
1	A	238	LEU	CA-CB-CG	-5.69	96.38	116.30
1	B	238	LEU	CA-CB-CG	-5.36	97.54	116.30
1	A	179	GLU	N-CA-C	5.17	116.99	111.36

There are no chirality outliers.

There are no planarity outliers.

5.2 Too-close contacts [i](#)

In the following table, the Non-H and H(model) columns list the number of non-hydrogen atoms and hydrogen atoms in the chain respectively. The H(added) column lists the number of hydrogen atoms added and optimized by MolProbity. The Clashes column lists the number of clashes within the asymmetric unit, whereas Symm-Clashes lists symmetry-related clashes.

Mol	Chain	Non-H	H(model)	H(added)	Clashes	Symm-Clashes
1	A	2259	0	2269	34	0
1	B	2233	0	2240	40	0
2	A	44	0	26	0	0
2	B	44	0	26	0	0
3	A	24	0	16	2	0
3	B	24	0	16	0	0
4	A	86	0	0	3	0
4	B	91	0	0	2	0
All	All	4805	0	4593	71	0

The all-atom clashscore is defined as the number of clashes found per 1000 atoms (including hydrogen atoms). The all-atom clashscore for this structure is 8.

All (71) close contacts within the same asymmetric unit are listed below, sorted by their clash magnitude.

Atom-1	Atom-2	Interatomic distance (Å)	Clash overlap (Å)
1:B:139:MET:SD	1:B:164:MET:HE2	2.13	0.89
1:B:367:THR:O	1:B:367:THR:HG22	1.73	0.88
1:B:223:GLN:NE2	1:B:324:ASN:HB2	1.90	0.85
1:B:126:ILE:HG21	1:B:128:PHE:HE1	1.45	0.81
1:B:223:GLN:HE21	1:B:324:ASN:H	1.29	0.79
1:B:367:THR:O	1:B:367:THR:CG2	2.35	0.74
1:A:170:SER:HB3	1:A:240:LYS:HD2	1.71	0.73
1:A:277:TYR:HB3	4:A:607:HOH:O	1.90	0.70
1:A:383:ARG:HD3	1:B:301:ARG:HH11	1.56	0.70
1:B:249:CYS:O	1:B:253:VAL:HB	1.97	0.65
1:A:174:ALA:O	1:A:177:ILE:HG12	1.96	0.64
1:A:170:SER:HB3	1:A:240:LYS:CD	2.28	0.64
1:B:367:THR:HG23	1:B:370:ASP:HB2	1.79	0.64
1:B:126:ILE:CG2	1:B:128:PHE:HE1	2.09	0.64
1:B:273:VAL:HG23	4:B:618:HOH:O	1.98	0.63
1:A:161:ILE:HD13	1:A:164:MET:HE3	1.79	0.63
1:A:220:LYS:HE3	1:A:232:LYS:HE2	1.81	0.62
1:A:218:ASN:HD22	1:A:219:ALA:H	1.44	0.62
1:A:383:ARG:HD3	1:B:301:ARG:NH1	2.15	0.62

Continued on next page...

Continued from previous page...

Atom-1	Atom-2	Interatomic distance (Å)	Clash overlap (Å)
1:B:126:ILE:CG2	1:B:128:PHE:CE1	2.83	0.62
1:A:379:TYR:HA	1:B:301:ARG:HH22	1.66	0.61
1:B:184:ASN:ND2	1:B:186:ARG:H	1.97	0.61
1:B:119:LEU:O	1:B:124:VAL:HG13	2.01	0.60
1:B:126:ILE:HG21	1:B:128:PHE:CE1	2.34	0.60
1:A:149:ASN:O	1:A:152:ILE:HG12	2.01	0.59
1:B:99:ILE:HD13	1:B:125:LYS:HB2	1.84	0.59
1:B:178:ASP:OD1	1:B:181:THR:HG23	2.03	0.59
1:A:170:SER:CB	1:A:240:LYS:HE2	2.32	0.59
1:B:367:THR:CG2	1:B:370:ASP:HB2	2.34	0.58
1:A:119:LEU:O	1:A:124:VAL:HG13	2.04	0.58
1:A:161:ILE:HG21	1:A:164:MET:HE3	1.84	0.58
1:A:294:VAL:HG11	4:A:605:HOH:O	2.05	0.56
1:B:256:MET:HE2	1:B:260:SER:HB3	1.87	0.56
1:A:269:ALA:HB2	1:A:274:VAL:HG13	1.88	0.55
1:B:253:VAL:HG21	1:B:299:LEU:HD22	1.89	0.55
1:A:170:SER:HB3	1:A:240:LYS:CE	2.38	0.53
1:A:170:SER:HB2	1:A:240:LYS:HE2	1.91	0.52
1:A:170:SER:HB3	1:A:240:LYS:HE2	1.91	0.51
1:B:212:LEU:HD21	1:B:248:LEU:HD13	1.92	0.51
1:B:223:GLN:NE2	1:B:324:ASN:CB	2.68	0.51
1:A:126:ILE:HG21	1:A:128:PHE:CE1	2.46	0.51
1:B:201:LEU:HD11	1:B:205:LYS:HE3	1.92	0.50
1:B:160:ASN:C	1:B:160:ASN:HD22	2.20	0.50
1:B:189:MET:HE3	1:B:189:MET:HA	1.93	0.50
1:B:178:ASP:CG	1:B:181:THR:HG23	2.38	0.49
1:A:120:SER:HB3	1:A:153:ILE:HD11	1.96	0.48
1:A:367:THR:HB	1:A:370:ASP:OD2	2.13	0.47
1:B:265:LEU:HD23	1:B:310:ILE:HB	1.96	0.47
1:B:126:ILE:HG22	1:B:128:PHE:CE1	2.49	0.47
1:B:252:PHE:O	1:B:256:MET:HG3	2.15	0.47
1:B:103:ALA:HB1	1:B:167:PHE:CE2	2.50	0.46
1:A:121:LYS:HG2	1:A:153:ILE:CG2	2.45	0.46
1:B:253:VAL:HG21	1:B:299:LEU:CD2	2.45	0.46
1:A:161:ILE:HD13	1:A:164:MET:CE	2.45	0.46
1:B:273:VAL:HA	4:B:516:HOH:O	2.15	0.45
1:A:189:MET:HE3	1:A:189:MET:HA	1.99	0.45
1:A:269:ALA:CB	1:A:274:VAL:HG13	2.46	0.45
1:A:121:LYS:HG2	1:A:153:ILE:HG21	1.99	0.44
1:B:103:ALA:HB1	1:B:167:PHE:HE2	1.83	0.44
1:A:282:SER:HB3	4:A:607:HOH:O	2.18	0.43

Continued on next page...

Continued from previous page...

Atom-1	Atom-2	Interatomic distance (Å)	Clash overlap (Å)
1:B:139:MET:SD	1:B:164:MET:CE	2.98	0.43
1:A:186:ARG:NE	1:A:186:ARG:HA	2.34	0.43
1:A:257:LYS:O	1:A:260:SER:OG	2.32	0.42
1:A:120:SER:HB3	1:A:153:ILE:CD1	2.50	0.41
1:A:323:ILE:HD12	3:A:500:JPJ:C24	2.50	0.41
1:B:416:GLY:O	1:B:419:ILE:HG12	2.21	0.41
1:A:243:TYR:CE2	1:A:247:SER:HB2	2.56	0.41
1:B:316:LYS:NZ	1:B:370:ASP:OD2	2.50	0.41
1:B:181:THR:O	1:B:187:TYR:HB2	2.21	0.41
1:A:323:ILE:HD11	3:A:500:JPJ:C19	2.51	0.40
1:B:98:ASP:HB2	1:B:124:VAL:HB	2.03	0.40

There are no symmetry-related clashes.

5.3 Torsion angles [i](#)

5.3.1 Protein backbone [i](#)

In the following table, the Percentiles column shows the percent Ramachandran outliers of the chain as a percentile score with respect to all X-ray entries followed by that with respect to entries of similar resolution.

The Analysed column shows the number of residues for which the backbone conformation was analysed, and the total number of residues.

Mol	Chain	Analysed	Favoured	Allowed	Outliers	Percentiles	
1	A	282/338 (83%)	272 (96%)	10 (4%)	0	100	100
1	B	277/338 (82%)	263 (95%)	14 (5%)	0	100	100
All	All	559/676 (83%)	535 (96%)	24 (4%)	0	100	100

There are no Ramachandran outliers to report.

5.3.2 Protein sidechains [i](#)

In the following table, the Percentiles column shows the percent sidechain outliers of the chain as a percentile score with respect to all X-ray entries followed by that with respect to entries of similar resolution.

The Analysed column shows the number of residues for which the sidechain conformation was analysed, and the total number of residues.

Mol	Chain	Analysed	Rotameric	Outliers	Percentiles	
1	A	247/297 (83%)	228 (92%)	19 (8%)	12	9
1	B	244/297 (82%)	226 (93%)	18 (7%)	13	10
All	All	491/594 (83%)	454 (92%)	37 (8%)	12	10

All (37) residues with a non-rotameric sidechain are listed below:

Mol	Chain	Res	Type
1	A	97	GLU
1	A	105	ILE
1	A	124	VAL
1	A	137	ILE
1	A	152	ILE
1	A	162	LEU
1	A	178	ASP
1	A	188	ASN
1	A	198	VAL
1	A	218	ASN
1	A	226	LEU
1	A	227	LEU
1	A	238	LEU
1	A	248	LEU
1	A	273	VAL
1	A	274	VAL
1	A	283	SER
1	A	382	LEU
1	A	417	LEU
1	B	124	VAL
1	B	146	LYS
1	B	160	ASN
1	B	162	LEU
1	B	186	ARG
1	B	201	LEU
1	B	210	ASN
1	B	226	LEU
1	B	227	LEU
1	B	238	LEU
1	B	248	LEU
1	B	250	LYS
1	B	253	VAL
1	B	283	SER
1	B	382	LEU
1	B	384	GLN

Continued on next page...

Continued from previous page...

Mol	Chain	Res	Type
1	B	401	ARG
1	B	417	LEU

Sometimes sidechains can be flipped to improve hydrogen bonding and reduce clashes. All (15) such sidechains are listed below:

Mol	Chain	Res	Type
1	A	123	ASN
1	A	183	ASN
1	A	188	ASN
1	A	200	ASN
1	A	218	ASN
1	A	254	ASN
1	A	302	ASN
1	B	160	ASN
1	B	184	ASN
1	B	200	ASN
1	B	218	ASN
1	B	223	GLN
1	B	228	ASN
1	B	302	ASN
1	B	384	GLN

5.3.3 RNA [i](#)

There are no RNA molecules in this entry.

5.4 Non-standard residues in protein, DNA, RNA chains [i](#)

There are no non-standard protein/DNA/RNA residues in this entry.

5.5 Carbohydrates [i](#)

There are no oligosaccharides in this entry.

5.6 Ligand geometry [i](#)

4 ligands are modelled in this entry.

In the following table, the Counts columns list the number of bonds (or angles) for which Mogul statistics could be retrieved, the number of bonds (or angles) that are observed in the model and the number of bonds (or angles) that are defined in the Chemical Component Dictionary. The Link column lists molecule types, if any, to which the group is linked. The Z score for a bond length (or angle) is the number of standard deviations the observed value is removed from the expected value. A bond length (or angle) with $|Z| > 2$ is considered an outlier worth inspection. RMSZ is the root-mean-square of all Z scores of the bond lengths (or angles).

Mol	Type	Chain	Res	Link	Bond lengths			Bond angles		
					Counts	RMSZ	# Z > 2	Counts	RMSZ	# Z > 2
3	JPJ	B	500	-	26,26,26	0.95	0	35,35,35	0.96	1 (2%)
3	JPJ	A	500	-	26,26,26	0.99	2 (7%)	35,35,35	0.89	1 (2%)
2	NAD	A	450	-	46,48,48	1.06	3 (6%)	64,73,73	1.68	12 (18%)
2	NAD	B	450	-	46,48,48	0.87	0	64,73,73	1.88	18 (28%)

In the following table, the Chirals column lists the number of chiral outliers, the number of chiral centers analysed, the number of these observed in the model and the number defined in the Chemical Component Dictionary. Similar counts are reported in the Torsion and Rings columns. '-' means no outliers of that kind were identified.

Mol	Type	Chain	Res	Link	Chirals	Torsions	Rings
3	JPJ	B	500	-	-	2/9/9/9	0/3/3/3
3	JPJ	A	500	-	-	2/9/9/9	0/3/3/3
2	NAD	A	450	-	-	5/30/62/62	0/5/5/5
2	NAD	B	450	-	-	5/30/62/62	0/5/5/5

All (5) bond length outliers are listed below:

Mol	Chain	Res	Type	Atoms	Z	Observed(Å)	Ideal(Å)
2	A	450	NAD	PA-O3	2.82	1.62	1.59
3	A	500	JPJ	C15-CL20	2.36	1.79	1.73
2	A	450	NAD	O7N-C7N	-2.28	1.19	1.24
2	A	450	NAD	C2N-N1N	2.07	1.37	1.35
3	A	500	JPJ	C6-C1	2.06	1.41	1.38

All (32) bond angle outliers are listed below:

Mol	Chain	Res	Type	Atoms	Z	Observed(°)	Ideal(°)
2	B	450	NAD	N3A-C2A-N1A	-5.72	119.93	128.58
2	A	450	NAD	N3A-C2A-N1A	-4.58	121.65	128.58
2	A	450	NAD	C5A-C4A-N3A	-4.43	120.62	126.72
2	B	450	NAD	C5A-C4A-N3A	-4.17	120.98	126.72

Continued on next page...

Continued from previous page...

Mol	Chain	Res	Type	Atoms	Z	Observed(°)	Ideal(°)
2	B	450	NAD	N9A-C8A-N7A	-4.15	108.04	113.94
2	B	450	NAD	C4A-N9A-C8A	3.90	109.83	105.74
2	B	450	NAD	C3N-C7N-N7N	3.80	122.42	117.74
2	A	450	NAD	N9A-C8A-N7A	-3.57	108.87	113.94
2	A	450	NAD	C3N-C7N-N7N	3.43	121.97	117.74
2	B	450	NAD	C2A-N3A-C4A	3.32	119.93	111.83
2	B	450	NAD	C6N-N1N-C1D	-3.19	113.46	119.73
2	B	450	NAD	O3-PA-O1A	-3.18	101.13	110.70
2	B	450	NAD	N3A-C4A-N9A	3.16	132.55	127.17
2	A	450	NAD	N3A-C4A-N9A	3.14	132.51	127.17
2	A	450	NAD	O4B-C1B-N9A	2.93	113.71	108.09
2	A	450	NAD	O3-PA-O1A	-2.78	102.33	110.70
2	A	450	NAD	C5A-N7A-C8A	2.75	107.77	103.45
2	A	450	NAD	C4A-N9A-C8A	2.69	108.56	105.74
2	B	450	NAD	O7N-C7N-N7N	-2.69	118.74	122.62
2	A	450	NAD	C2A-N3A-C4A	2.64	118.27	111.83
2	B	450	NAD	C5A-N7A-C8A	2.63	107.58	103.45
2	B	450	NAD	O3B-C3B-C4B	-2.62	103.55	111.08
3	A	500	JPJ	O13-C2-C1	2.34	120.55	116.59
2	A	450	NAD	C4A-C5A-N7A	-2.32	107.93	110.58
2	B	450	NAD	O2A-PA-O1A	2.31	123.20	112.44
2	B	450	NAD	C2A-N1A-C6A	2.31	122.52	118.73
2	B	450	NAD	O3-PN-O1N	2.28	117.55	110.70
3	B	500	JPJ	C7-C18-C28	2.22	120.78	113.23
2	B	450	NAD	C4A-C5A-N7A	-2.22	108.05	110.58
2	B	450	NAD	C2B-C3B-C4B	2.18	106.83	102.61
2	B	450	NAD	O5B-C5B-C4B	-2.13	101.74	108.99
2	A	450	NAD	C5B-C4B-C3B	-2.08	107.74	115.21

There are no chirality outliers.

All (14) torsion outliers are listed below:

Mol	Chain	Res	Type	Atoms
2	A	450	NAD	C5D-O5D-PN-O3
2	A	450	NAD	C5D-O5D-PN-O1N
2	A	450	NAD	C5D-O5D-PN-O2N
2	A	450	NAD	O4D-C1D-N1N-C2N
2	B	450	NAD	C5D-O5D-PN-O3
2	B	450	NAD	C5D-O5D-PN-O1N
2	B	450	NAD	O4D-C1D-N1N-C2N
2	B	450	NAD	C5D-O5D-PN-O2N
3	A	500	JPJ	C4-C5-C7-C18

Continued on next page...

Continued from previous page...

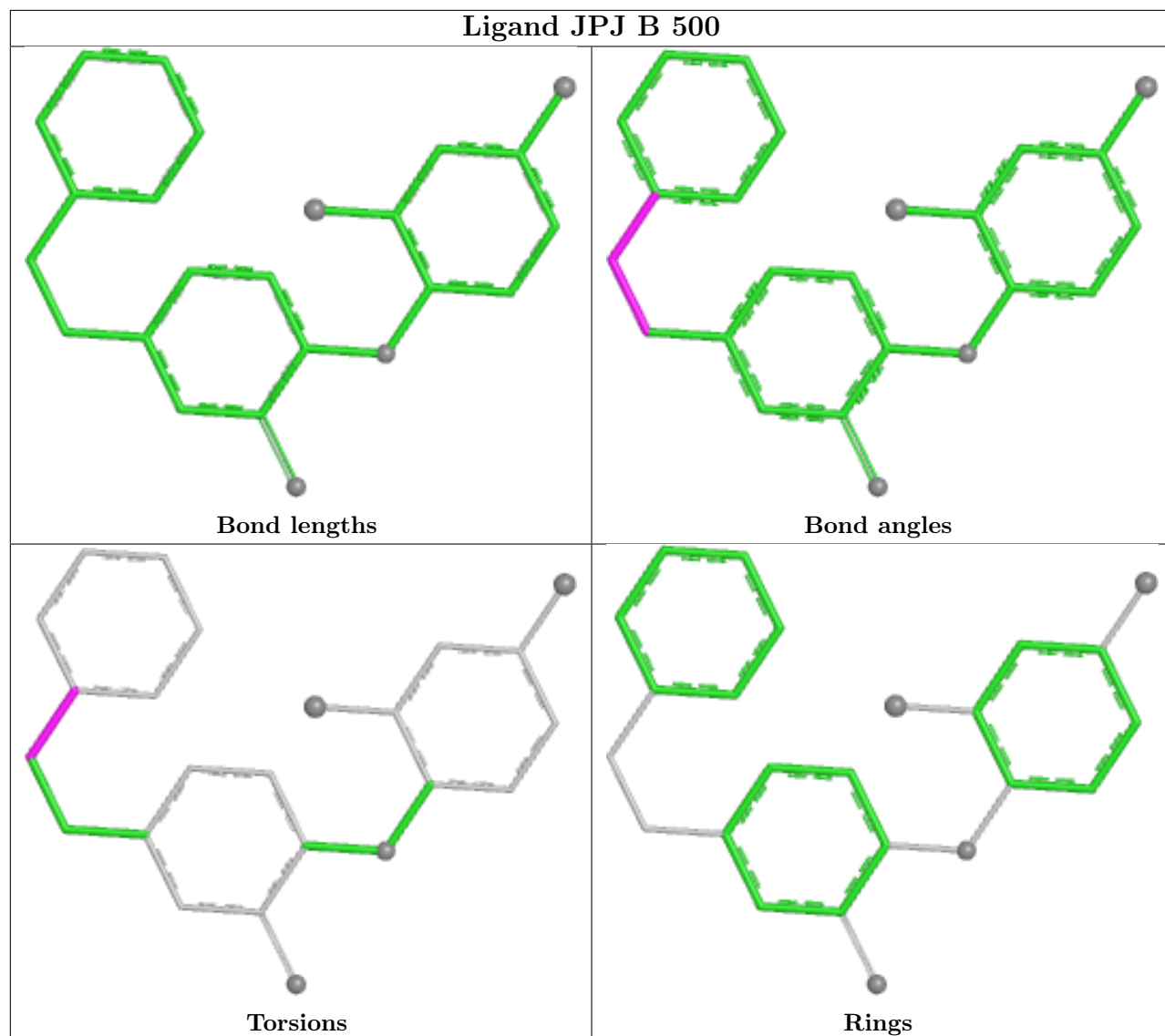
Mol	Chain	Res	Type	Atoms
3	B	500	JPJ	C7-C18-C28-C23
3	A	500	JPJ	C6-C5-C7-C18
3	B	500	JPJ	C7-C18-C28-C27
2	A	450	NAD	O4D-C1D-N1N-C6N
2	B	450	NAD	O4D-C1D-N1N-C6N

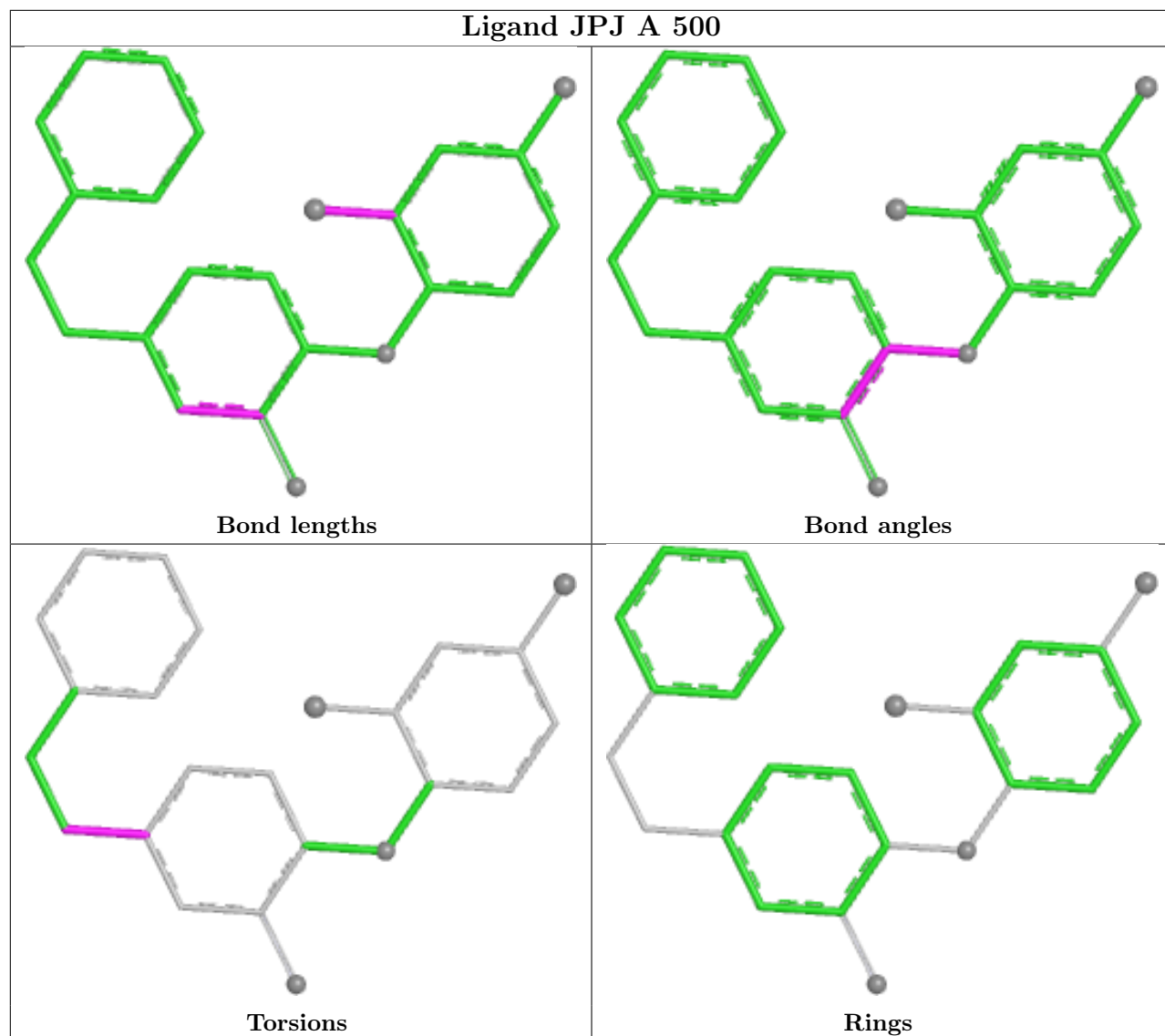
There are no ring outliers.

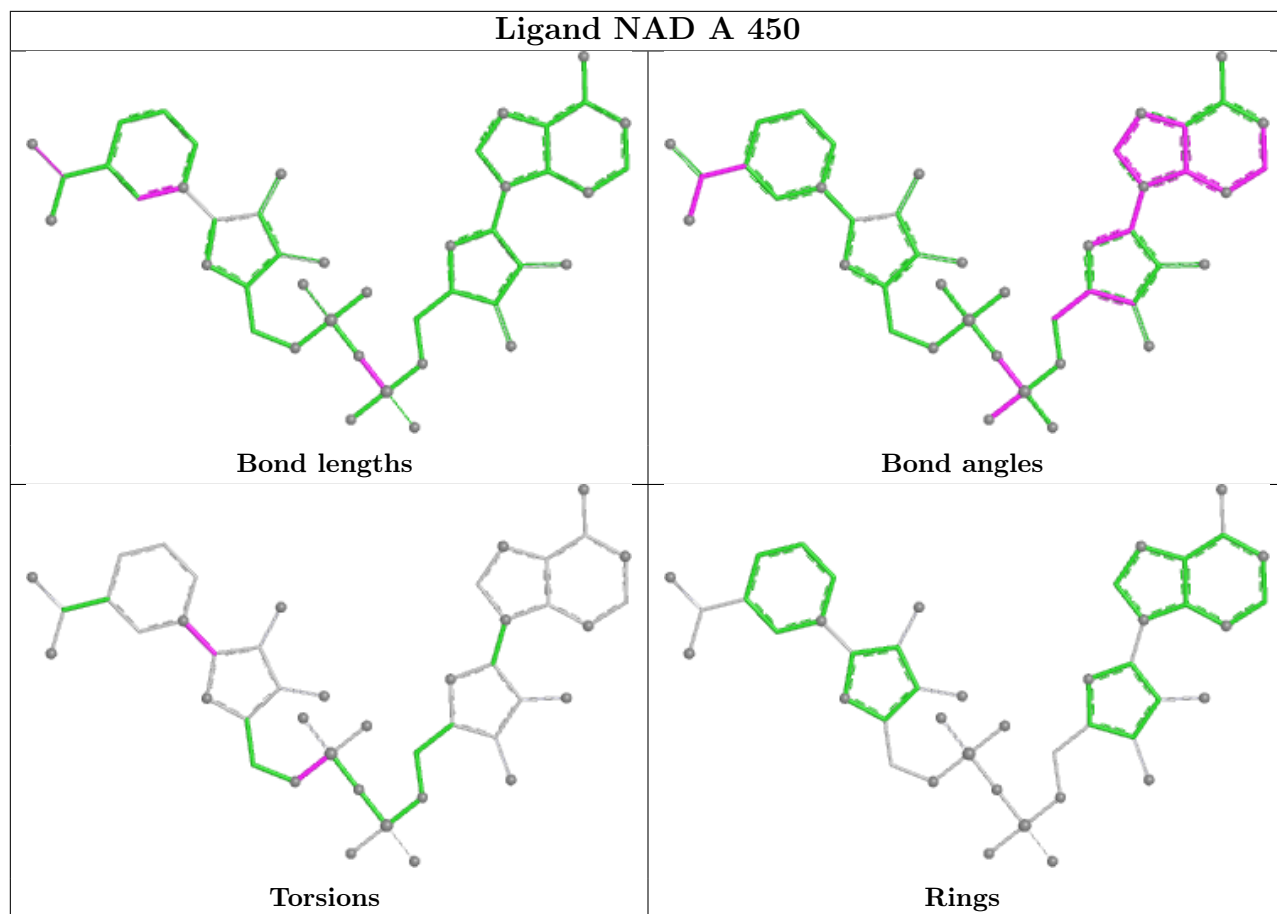
1 monomer is involved in 2 short contacts:

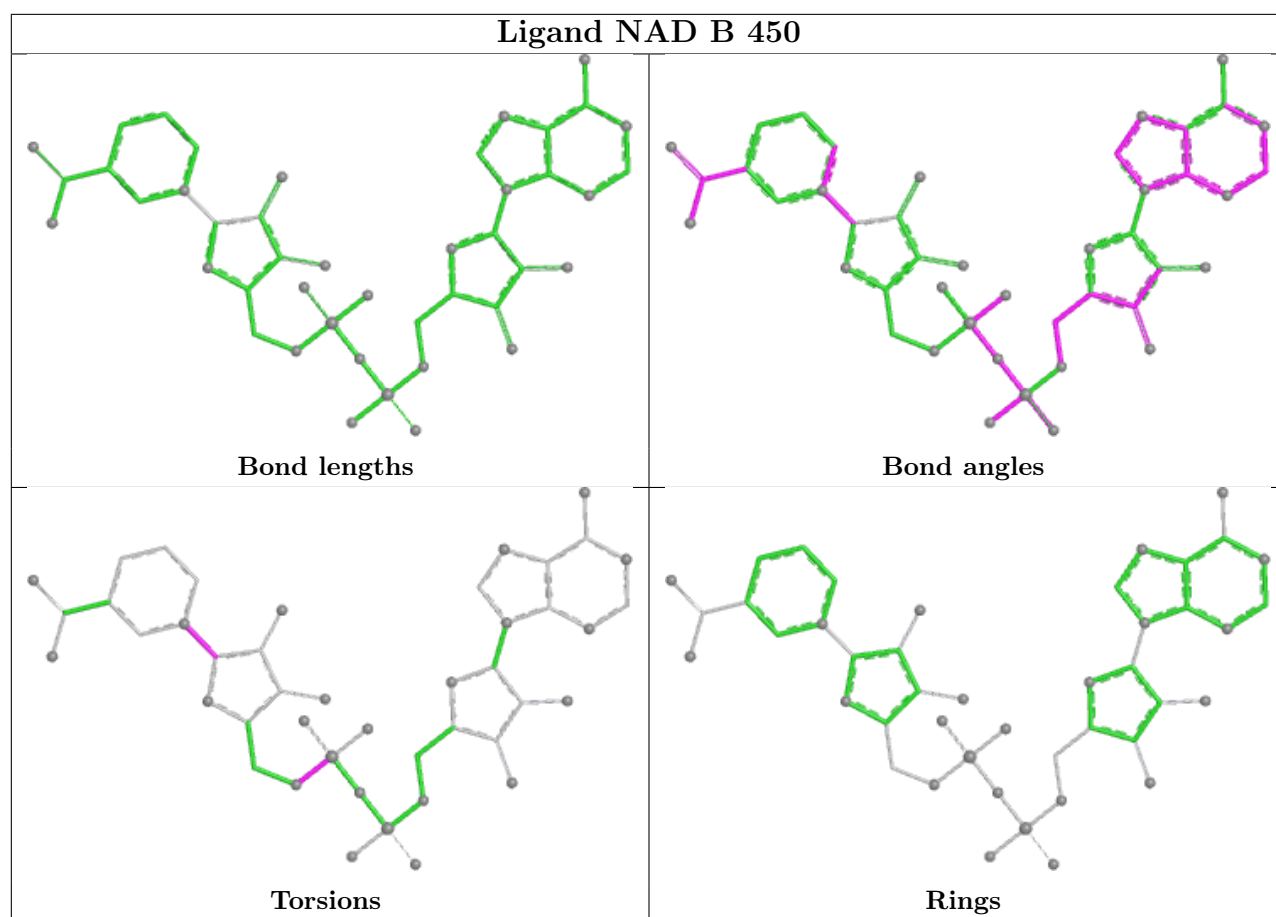
Mol	Chain	Res	Type	Clashes	Symm-Clashes
3	A	500	JPJ	2	0

The following is a two-dimensional graphical depiction of Mogul quality analysis of bond lengths, bond angles, torsion angles, and ring geometry for all instances of the Ligand of Interest. In addition, ligands with molecular weight > 250 and outliers as shown on the validation Tables will also be included. For torsion angles, if less than 5% of the Mogul distribution of torsion angles is within 10 degrees of the torsion angle in question, then that torsion angle is considered an outlier. Any bond that is central to one or more torsion angles identified as an outlier by Mogul will be highlighted in the graph. For rings, the root-mean-square deviation (RMSD) between the ring in question and similar rings identified by Mogul is calculated over all ring torsion angles. If the average RMSD is greater than 60 degrees and the minimal RMSD between the ring in question and any Mogul-identified rings is also greater than 60 degrees, then that ring is considered an outlier. The outliers are highlighted in purple. The color gray indicates Mogul did not find sufficient equivalents in the CSD to analyse the geometry.









5.7 Other polymers [i](#)

There are no such residues in this entry.

5.8 Polymer linkage issues [i](#)

There are no chain breaks in this entry.

6 Fit of model and data

6.1 Protein, DNA and RNA chains

In the following table, the column labelled ‘#RSRZ > 2’ contains the number (and percentage) of RSRZ outliers, followed by percent RSRZ outliers for the chain as percentile scores relative to all X-ray entries and entries of similar resolution. The OWAB column contains the minimum, median, 95th percentile and maximum values of the occupancy-weighted average B-factor per residue. The column labelled ‘Q < 0.9’ lists the number of (and percentage) of residues with an average occupancy less than 0.9.

Mol	Chain	Analysed	<RSRZ>	#RSRZ>2	OWAB(Å ²)	Q<0.9
1	A	286/338 (84%)	0.04	15 (5%) 33 35	24, 35, 64, 81	0
1	B	283/338 (83%)	0.05	13 (4%) 37 39	24, 37, 67, 81	0
All	All	569/676 (84%)	0.04	28 (4%) 35 37	24, 36, 67, 81	0

All (28) RSRZ outliers are listed below:

Mol	Chain	Res	Type	RSRZ
1	B	368	PHE	5.0
1	A	181	THR	4.5
1	A	177	ILE	4.5
1	A	368	PHE	3.8
1	B	153	ILE	3.5
1	B	189	MET	3.2
1	A	182	LYS	2.8
1	A	154	ASP	2.8
1	A	153	ILE	2.8
1	A	152	ILE	2.8
1	B	137	ILE	2.7
1	A	189	MET	2.6
1	B	179	GLU	2.6
1	B	159	MET	2.4
1	A	183	ASN	2.3
1	B	97	GLU	2.3
1	B	207	GLY	2.3
1	A	179	GLU	2.3
1	A	367	THR	2.3
1	A	188	ASN	2.3
1	A	371	TYR	2.2
1	B	152	ILE	2.1
1	B	200	ASN	2.1
1	A	156	ASP	2.1

Continued on next page...

Continued from previous page...

Mol	Chain	Res	Type	RSRZ
1	A	97	GLU	2.0
1	B	367	THR	2.0
1	B	371	TYR	2.0
1	B	122	ARG	2.0

6.2 Non-standard residues in protein, DNA, RNA chains [i](#)

There are no non-standard protein/DNA/RNA residues in this entry.

6.3 Carbohydrates [i](#)

There are no oligosaccharides in this entry.

6.4 Ligands [i](#)

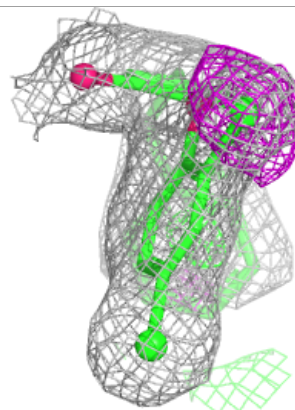
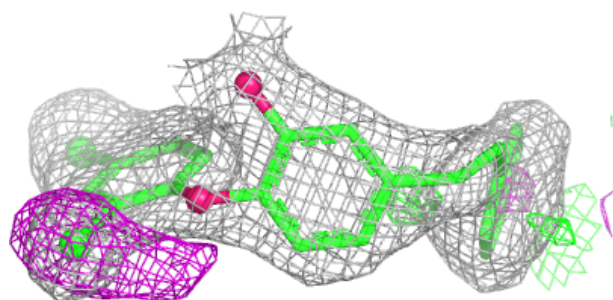
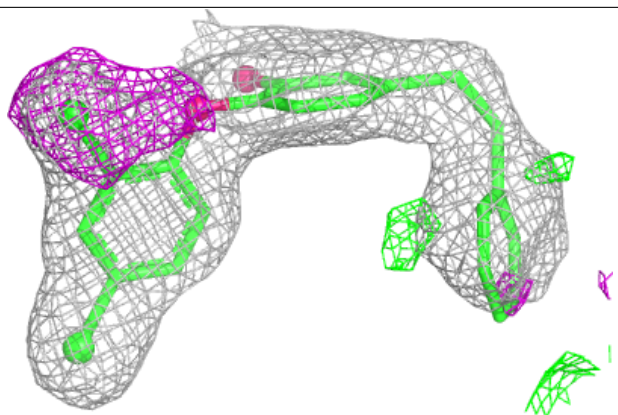
In the following table, the Atoms column lists the number of modelled atoms in the group and the number defined in the chemical component dictionary. The B-factors column lists the minimum, median, 95th percentile and maximum values of B factors of atoms in the group. The column labelled 'Q < 0.9' lists the number of atoms with occupancy less than 0.9.

Mol	Type	Chain	Res	Atoms	RSCC	RSR	B-factors(Å ²)	Q < 0.9
3	JPJ	B	500	24/24	0.93	0.09	31,35,51,52	0
3	JPJ	A	500	24/24	0.96	0.07	32,36,47,50	0
2	NAD	B	450	44/44	0.96	0.06	27,33,41,44	0
2	NAD	A	450	44/44	0.97	0.06	28,37,42,44	0

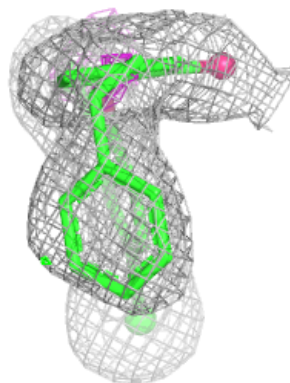
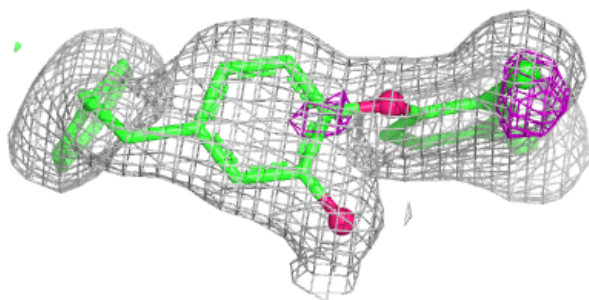
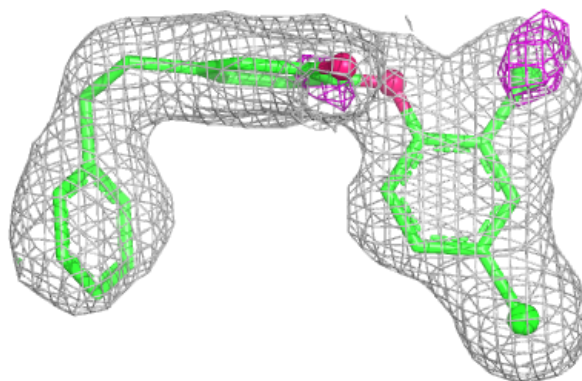
The following is a graphical depiction of the model fit to experimental electron density of all instances of the Ligand of Interest. In addition, ligands with molecular weight > 250 and outliers as shown on the geometry validation Tables will also be included. Each fit is shown from different orientation to approximate a three-dimensional view.

Electron density around JPJ B 500:

$2mF_o-DF_c$ (at 0.7 rmsd) in gray
 mF_o-DF_c (at 3 rmsd) in purple (negative)
and green (positive)

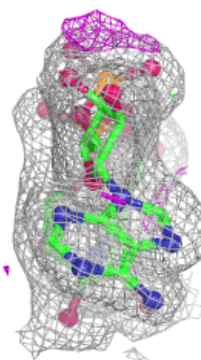
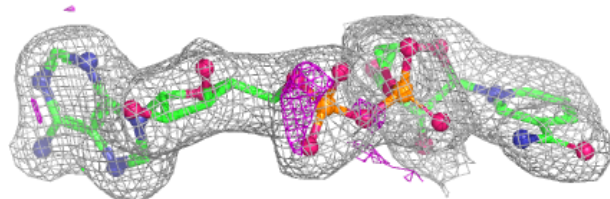
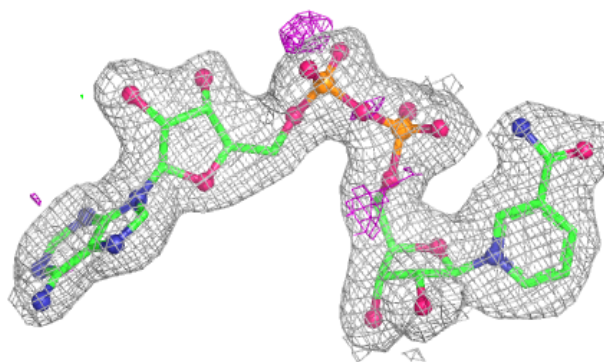
**Electron density around JPJ A 500:**

$2mF_o-DF_c$ (at 0.7 rmsd) in gray
 mF_o-DF_c (at 3 rmsd) in purple (negative)
and green (positive)

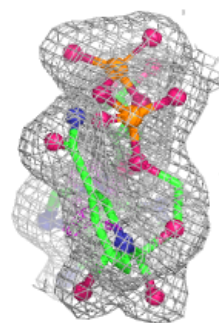
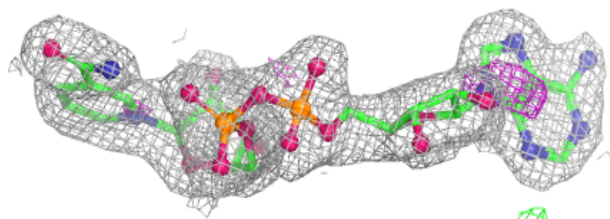
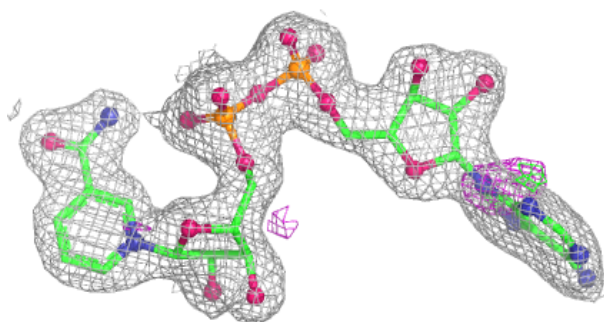


Electron density around NAD B 450:

$2mF_o-DF_c$ (at 0.7 rmsd) in gray
 mF_o-DF_c (at 3 rmsd) in purple (negative)
and green (positive)

**Electron density around NAD A 450:**

$2mF_o-DF_c$ (at 0.7 rmsd) in gray
 mF_o-DF_c (at 3 rmsd) in purple (negative)
and green (positive)



6.5 Other polymers [i](#)

There are no such residues in this entry.