



Full wwPDB EM Validation Report ⓘ

Jul 2, 2026 – 12:08 PM EDT

PDB ID : 9OPY / pdb_00009opy
EMDB ID : EMD-70730
Title : Structure of the sweet receptor in the apo state
Authors : Wang, H.; Chen, X.; Dai, Y.; Lee, C.H.
Deposited on : 2025-05-20
Resolution : 3.51 Å (reported)

This is a Full wwPDB EM Validation Report for a publicly released PDB entry.

We welcome your comments at validation@mail.wwpdb.org

A user guide is available at

<https://www.wwpdb.org/validation/2017/EMValidationReportHelp>

with specific help available everywhere you see the ⓘ symbol.

The types of validation reports are described at

<http://www.wwpdb.org/validation/2017/FAQs#types>.

The following versions of software and data (see [references ⓘ](#)) were used in the production of this report:

EMDB validation analysis : 0.0.1.dev133
MolProbity : 4-5-2 with Phenix2.0
Percentile statistics : 20250101.v01 (using entries in the PDB archive January 1st 2025)
EM percentile statistics : 202505.v01 (Using data in the EMDB archive up until May 2025)
MapQ : 1.9.13
Ideal geometry (proteins) : Engh & Huber (2001)
Ideal geometry (DNA, RNA) : Parkinson et al. (1996)
Validation Pipeline (wwPDB-VP) : 2.50

2 Entry composition i

There are 2 unique types of molecules in this entry. The entry contains 12388 atoms, of which 0 are hydrogens and 0 are deuteriums.

In the tables below, the AltConf column contains the number of residues with at least one atom in alternate conformation and the Trace column contains the number of residues modelled with at most 2 atoms.

- Molecule 1 is a protein called Taste receptor type 1 member 2.

Mol	Chain	Residues	Atoms					AltConf	Trace
			Total	C	N	O	S		
1	A	774	6172	4000	1010	1114	48	0	0

There are 3 discrepancies between the modelled and reference sequences:

Chain	Residue	Modelled	Actual	Comment	Reference
A	132	SER	ILE	engineered mutation	UNP Q8TE23
A	212	ASN	SER	engineered mutation	UNP Q8TE23
A	231	GLY	ASP	engineered mutation	UNP Q8TE23

- Molecule 2 is a protein called Taste receptor type 1 member 3.

Mol	Chain	Residues	Atoms					AltConf	Trace
			Total	C	N	O	S		
2	B	796	6216	4020	1043	1104	49	0	0

There are 25 discrepancies between the modelled and reference sequences:

Chain	Residue	Modelled	Actual	Comment	Reference
B	21	ALA	-	expression tag	UNP Q925D8
B	22	SER	-	expression tag	UNP Q925D8
B	836	GLY	-	expression tag	UNP Q925D8
B	837	ARG	-	expression tag	UNP Q925D8
B	838	ASN	-	expression tag	UNP Q925D8
B	839	ALA	-	expression tag	UNP Q925D8
B	840	LYS	-	expression tag	UNP Q925D8
B	841	LYS	-	expression tag	UNP Q925D8
B	842	ALA	-	expression tag	UNP Q925D8
B	843	ALA	-	expression tag	UNP Q925D8
B	844	ASP	-	expression tag	UNP Q925D8
B	845	GLU	-	expression tag	UNP Q925D8
B	846	ASN	-	expression tag	UNP Q925D8
B	847	SER	-	expression tag	UNP Q925D8

Continued on next page...

Continued from previous page...

Chain	Residue	Modelled	Actual	Comment	Reference
B	848	GLY	-	expression tag	UNP Q925D8
B	849	GLY	-	expression tag	UNP Q925D8
B	850	GLY	-	expression tag	UNP Q925D8
B	851	GLU	-	expression tag	UNP Q925D8
B	852	ALA	-	expression tag	UNP Q925D8
B	853	ALA	-	expression tag	UNP Q925D8
B	854	GLN	-	expression tag	UNP Q925D8
B	855	GLY	-	expression tag	UNP Q925D8
B	856	HIS	-	expression tag	UNP Q925D8
B	857	ASN	-	expression tag	UNP Q925D8
B	858	GLU	-	expression tag	UNP Q925D8

4 Experimental information

Property	Value	Source
EM reconstruction method	SINGLE PARTICLE	Depositor
Imposed symmetry	POINT, Not provided	
Number of particles used	138568	Depositor
Resolution determination method	FSC 0.143 CUT-OFF	Depositor
CTF correction method	PHASE FLIPPING AND AMPLITUDE CORRECTION	Depositor
Microscope	TFS KRIOS	Depositor
Voltage (kV)	300	Depositor
Electron dose ($e^-/\text{\AA}^2$)	60.6	Depositor
Minimum defocus (nm)	1100	Depositor
Maximum defocus (nm)	2100	Depositor
Magnification	Not provided	
Image detector	GATAN K3 (6k x 4k)	Depositor
Maximum map value	4.602	Depositor
Minimum map value	-2.646	Depositor
Average map value	0.006	Depositor
Map value standard deviation	0.092	Depositor
Recommended contour level	0.584	Depositor
Map size (\AA)	311.52, 311.52, 311.52	wwPDB
Map dimensions	240, 240, 240	wwPDB
Map angles ($^\circ$)	90.0, 90.0, 90.0	wwPDB
Pixel spacing (\AA)	1.298, 1.298, 1.298	Depositor

5 Model quality [i](#)

5.1 Standard geometry [i](#)

The Z score for a bond length (or angle) is the number of standard deviations the observed value is removed from the expected value. A bond length (or angle) with $|Z| > 5$ is considered an outlier worth inspection. RMSZ is the root-mean-square of all Z scores of the bond lengths (or angles).

Mol	Chain	Bond lengths		Bond angles	
		RMSZ	# Z >5	RMSZ	# Z >5
1	A	0.12	0/6330	0.35	0/8628
2	B	0.12	0/6386	0.34	0/8712
All	All	0.12	0/12716	0.34	0/17340

There are no bond length outliers.

There are no bond angle outliers.

There are no chirality outliers.

There are no planarity outliers.

5.2 Too-close contacts [i](#)

In the following table, the Non-H and H(model) columns list the number of non-hydrogen atoms and hydrogen atoms in the chain respectively. The H(added) column lists the number of hydrogen atoms added and optimized by MolProbity. The Clashes column lists the number of clashes within the asymmetric unit, whereas Symm-Clashes lists symmetry-related clashes.

Mol	Chain	Non-H	H(model)	H(added)	Clashes	Symm-Clashes
1	A	6172	0	6108	29	0
2	B	6216	0	6147	34	0
All	All	12388	0	12255	63	0

The all-atom clashscore is defined as the number of clashes found per 1000 atoms (including hydrogen atoms). The all-atom clashscore for this structure is 3.

All (63) close contacts within the same asymmetric unit are listed below, sorted by their clash magnitude.

Atom-1	Atom-2	Interatomic distance (Å)	Clash overlap (Å)
2:B:510:ASP:O	2:B:535:ARG:NH2	2.29	0.66
1:A:531:ASP:OD1	1:A:532:GLU:N	2.29	0.64

Continued on next page...

Continued from previous page...

Atom-1	Atom-2	Interatomic distance (Å)	Clash overlap (Å)
1:A:431:LEU:N	1:A:434:HIS:O	2.27	0.63
2:B:560:LEU:HD12	2:B:561:PRO:HD2	1.82	0.62
2:B:299:ALA:N	2:B:322:LEU:O	2.31	0.60
2:B:675:ASN:OD1	2:B:676:TRP:N	2.37	0.58
2:B:410:ALA:N	2:B:440:MET:HE1	2.19	0.57
1:A:735:ASP:OD1	1:A:736:LEU:N	2.37	0.57
1:A:261:VAL:HG11	1:A:291:GLN:HG3	1.87	0.57
1:A:469:TYR:O	1:A:473:ARG:N	2.37	0.57
1:A:530:GLU:OE1	1:A:536:GLN:NE2	2.35	0.55
2:B:452:ASP:OD1	2:B:456:ASN:N	2.35	0.55
1:A:477:ASN:O	1:A:477:ASN:ND2	2.41	0.54
2:B:327:ARG:NH2	2:B:462:ASP:OD1	2.37	0.53
1:A:247:GLN:N	1:A:247:GLN:OE1	2.38	0.53
1:A:618:VAL:HG23	1:A:619:PRO:HD3	1.91	0.53
2:B:537:HIS:O	2:B:539:ASP:N	2.42	0.52
2:B:607:SER:O	2:B:659:GLN:NE2	2.43	0.52
1:A:43:ALA:O	1:A:103:TYR:HB2	2.10	0.51
1:A:645:ILE:O	1:A:648:ILE:HG22	2.11	0.51
1:A:325:ILE:HD12	1:A:325:ILE:N	2.26	0.50
1:A:381:GLY:O	1:A:385:VAL:HG23	2.12	0.50
2:B:151:LEU:HD11	2:B:171:MET:HE1	1.94	0.49
2:B:81:GLU:OE2	2:B:85:ASN:ND2	2.44	0.48
2:B:642:GLN:HB2	2:B:643:PRO:HD3	1.94	0.48
1:A:656:VAL:HG13	1:A:657:CYS:N	2.29	0.48
1:A:751:GLU:OE1	1:A:751:GLU:N	2.42	0.48
1:A:429:PHE:CZ	1:A:436:ILE:HD11	2.50	0.47
2:B:181:PRO:O	2:B:438:TYR:OH	2.31	0.46
2:B:419:VAL:O	2:B:420:SER:OG	2.29	0.46
2:B:536:LYS:O	2:B:537:HIS:C	2.58	0.46
1:A:723:ASN:O	1:A:727:SER:OG	2.31	0.46
1:A:726:ASN:OD1	1:A:727:SER:N	2.49	0.45
2:B:151:LEU:HD11	2:B:171:MET:CE	2.47	0.45
1:A:119:ASP:OD1	1:A:120:ASN:N	2.48	0.45
1:A:254:ARG:O	1:A:258:VAL:HG23	2.17	0.45
2:B:80:VAL:HG11	2:B:97:TYR:HD2	1.82	0.45
2:B:470:SER:OG	2:B:472:THR:O	2.33	0.44
2:B:603:LEU:C	2:B:603:LEU:HD23	2.43	0.43
1:A:684:PHE:O	1:A:687:VAL:HG22	2.18	0.43
1:A:227:VAL:HG13	1:A:228:ALA:N	2.34	0.43
1:A:655:ILE:HG23	1:A:656:VAL:N	2.33	0.43
1:A:405:CYS:SG	1:A:410:CYS:N	2.93	0.42

Continued on next page...

Continued from previous page...

Atom-1	Atom-2	Interatomic distance (Å)	Clash overlap (Å)
2:B:478:VAL:HG22	2:B:478:VAL:O	2.19	0.42
2:B:753:THR:HG23	2:B:754:PHE:N	2.35	0.42
2:B:478:VAL:HG21	2:B:492:MET:SD	2.60	0.42
2:B:424:VAL:O	2:B:424:VAL:HG12	2.20	0.42
2:B:647:LEU:HB2	2:B:648:PRO:HD3	2.02	0.42
1:A:583:ILE:HG23	1:A:812:CYS:SG	2.59	0.42
2:B:510:ASP:OD1	2:B:511:GLY:N	2.52	0.42
2:B:542:THR:HG22	2:B:543:CYS:N	2.35	0.42
1:A:618:VAL:HG23	1:A:619:PRO:CD	2.50	0.41
2:B:808:LEU:O	2:B:812:VAL:HG23	2.20	0.41
1:A:278:ASP:OD1	1:A:279:LEU:N	2.54	0.41
2:B:216:ASP:N	2:B:216:ASP:OD1	2.54	0.41
2:B:304:LEU:HD23	2:B:325:LEU:CD1	2.51	0.41
1:A:618:VAL:N	1:A:619:PRO:HD2	2.35	0.41
2:B:417:CYS:HA	2:B:422:CYS:HA	2.03	0.41
1:A:66:VAL:HG12	1:A:70:ASN:ND2	2.36	0.40
2:B:470:SER:OG	2:B:474:VAL:HG23	2.21	0.40
2:B:80:VAL:HG11	2:B:97:TYR:CD2	2.56	0.40
2:B:749:CYS:O	2:B:753:THR:HG22	2.20	0.40
2:B:60:ILE:N	2:B:60:ILE:HD12	2.37	0.40

There are no symmetry-related clashes.

5.3 Torsion angles [i](#)

5.3.1 Protein backbone [i](#)

In the following table, the Percentiles column shows the percent Ramachandran outliers of the chain as a percentile score with respect to all PDB entries followed by that with respect to all EM entries.

The Analysed column shows the number of residues for which the backbone conformation was analysed, and the total number of residues.

Mol	Chain	Analysed	Favoured	Allowed	Outliers	Percentiles	
1	A	765/818 (94%)	732 (96%)	33 (4%)	0	100	100
2	B	790/838 (94%)	769 (97%)	21 (3%)	0	100	100
All	All	1555/1656 (94%)	1501 (96%)	54 (4%)	0	100	100

There are no Ramachandran outliers to report.

5.3.2 Protein sidechains [i](#)

In the following table, the Percentiles column shows the percent sidechain outliers of the chain as a percentile score with respect to all PDB entries followed by that with respect to all EM entries.

The Analysed column shows the number of residues for which the sidechain conformation was analysed, and the total number of residues.

Mol	Chain	Analysed	Rotameric	Outliers	Percentiles	
1	A	696/735 (95%)	696 (100%)	0	100	100
2	B	685/712 (96%)	685 (100%)	0	100	100
All	All	1381/1447 (95%)	1381 (100%)	0	100	100

There are no protein residues with a non-rotameric sidechain to report.

Sometimes sidechains can be flipped to improve hydrogen bonding and reduce clashes. There are no such sidechains identified.

5.3.3 RNA [i](#)

There are no RNA molecules in this entry.

5.4 Non-standard residues in protein, DNA, RNA chains [i](#)

There are no non-standard protein/DNA/RNA residues in this entry.

5.5 Carbohydrates [i](#)

There are no oligosaccharides in this entry.

5.6 Ligand geometry [i](#)

There are no ligands in this entry.

5.7 Other polymers [i](#)

There are no such residues in this entry.

5.8 Polymer linkage issues

There are no chain breaks in this entry.

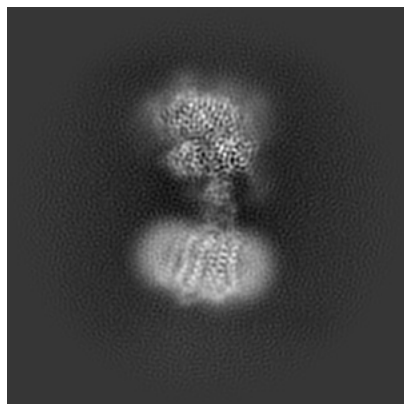
6 Map visualisation [i](#)

This section contains visualisations of the EMDB entry EMD-70730. These allow visual inspection of the internal detail of the map and identification of artifacts.

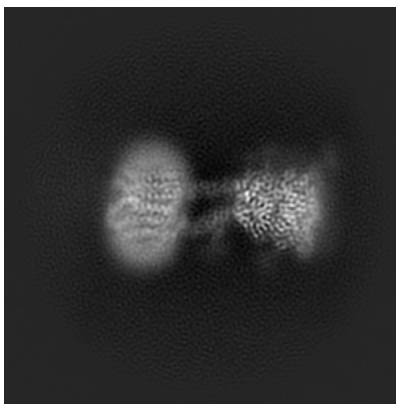
Images derived from a raw map, generated by summing the deposited half-maps, are presented below the corresponding image components of the primary map to allow further visual inspection and comparison with those of the primary map.

6.1 Orthogonal projections [i](#)

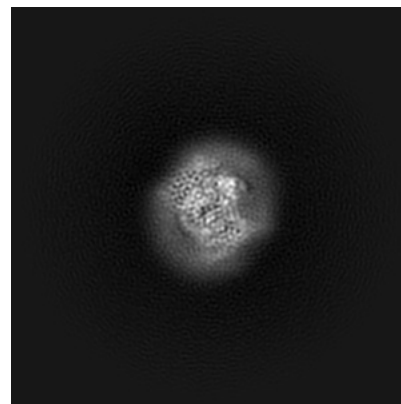
6.1.1 Primary map



X

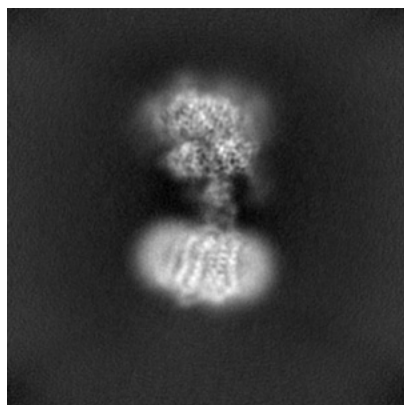


Y

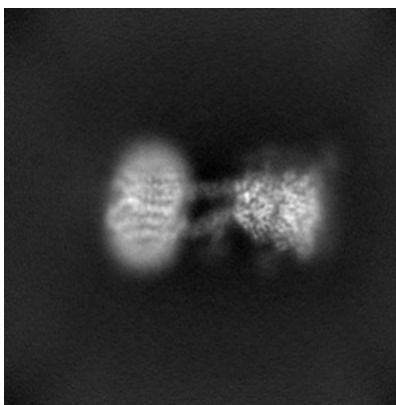


Z

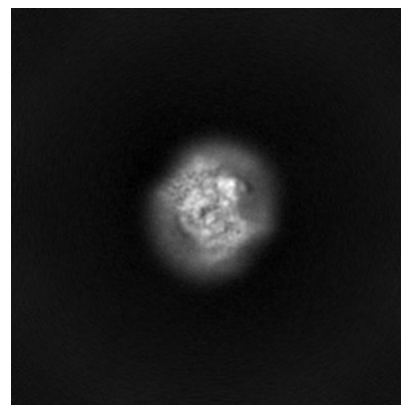
6.1.2 Raw map



X



Y

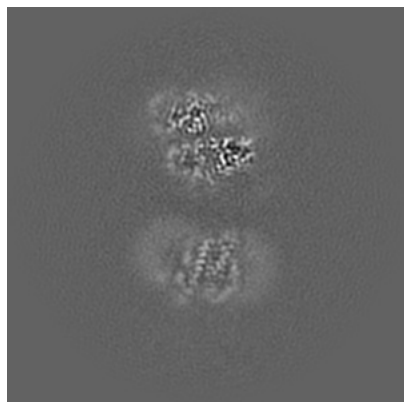


Z

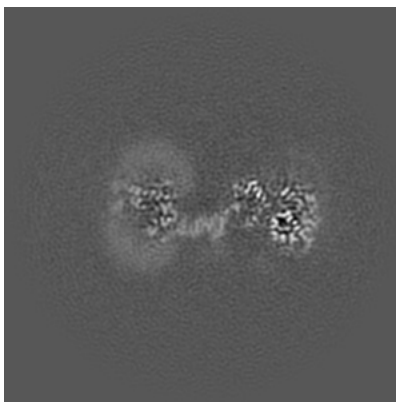
The images above show the map projected in three orthogonal directions.

6.2 Central slices [i](#)

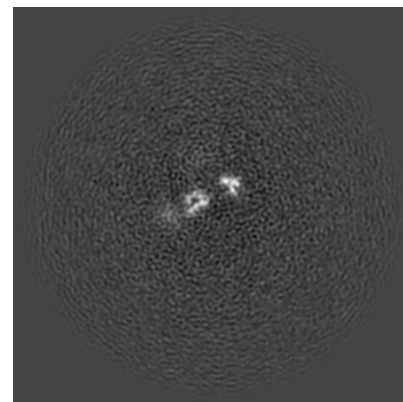
6.2.1 Primary map



X Index: 120

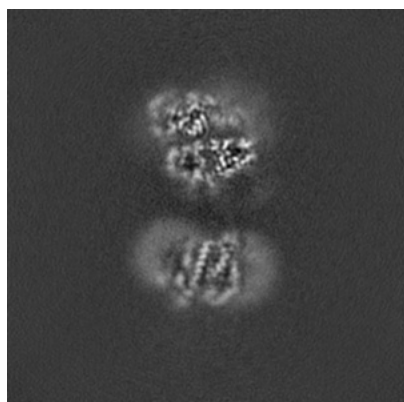


Y Index: 120

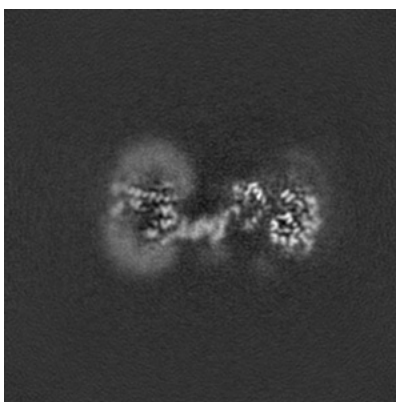


Z Index: 120

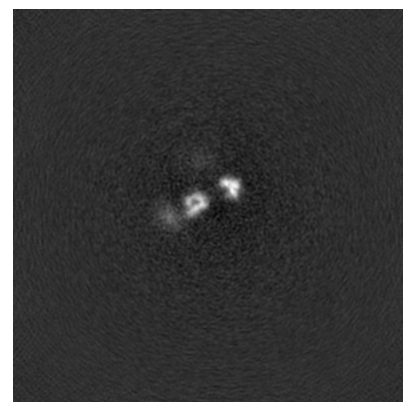
6.2.2 Raw map



X Index: 120



Y Index: 120

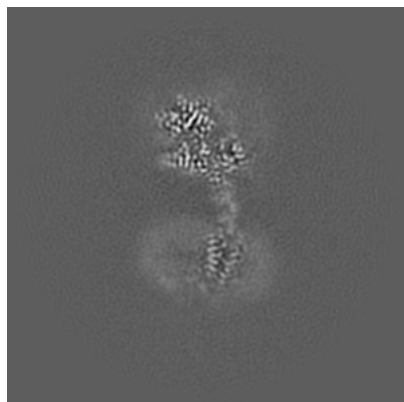


Z Index: 120

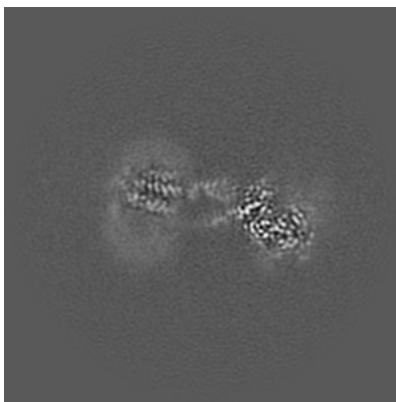
The images above show central slices of the map in three orthogonal directions.

6.3 Largest variance slices [i](#)

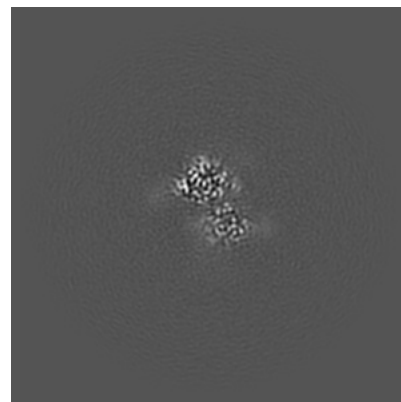
6.3.1 Primary map



X Index: 127

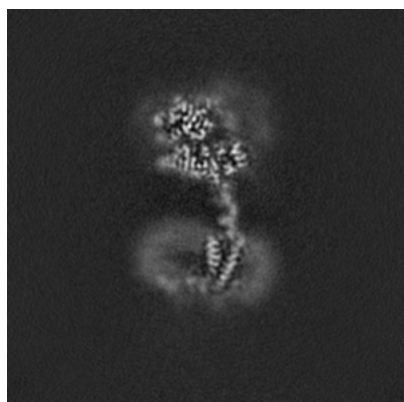


Y Index: 129

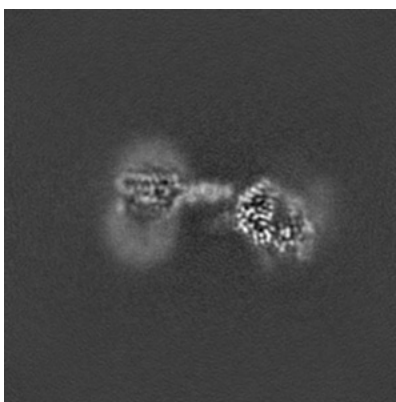


Z Index: 154

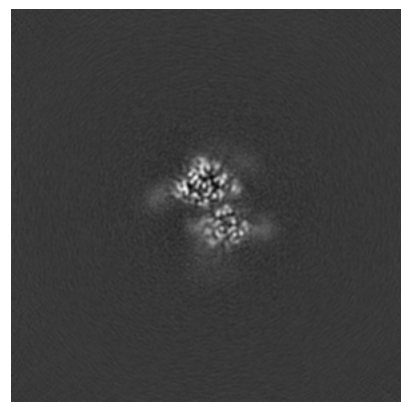
6.3.2 Raw map



X Index: 126



Y Index: 133

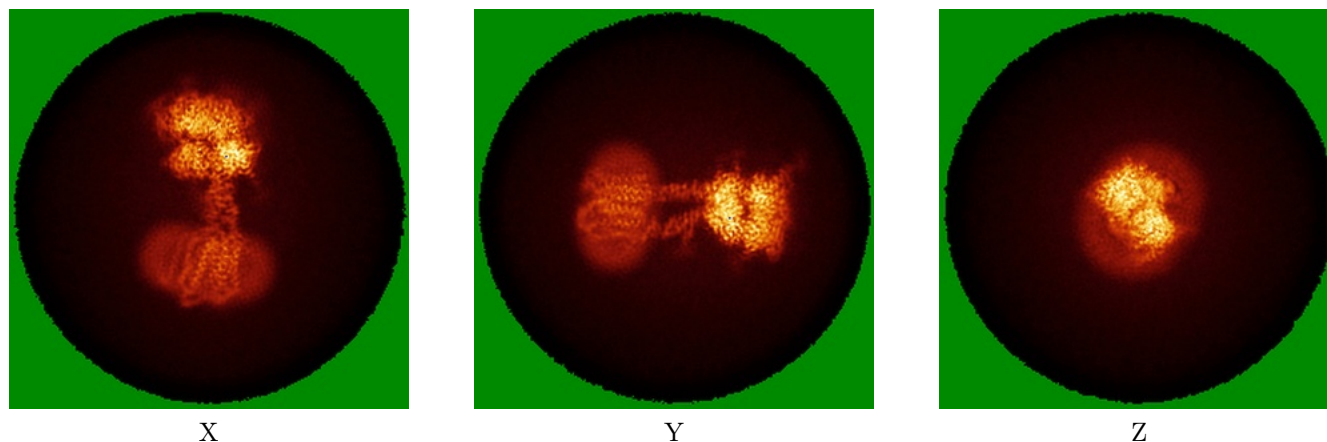


Z Index: 154

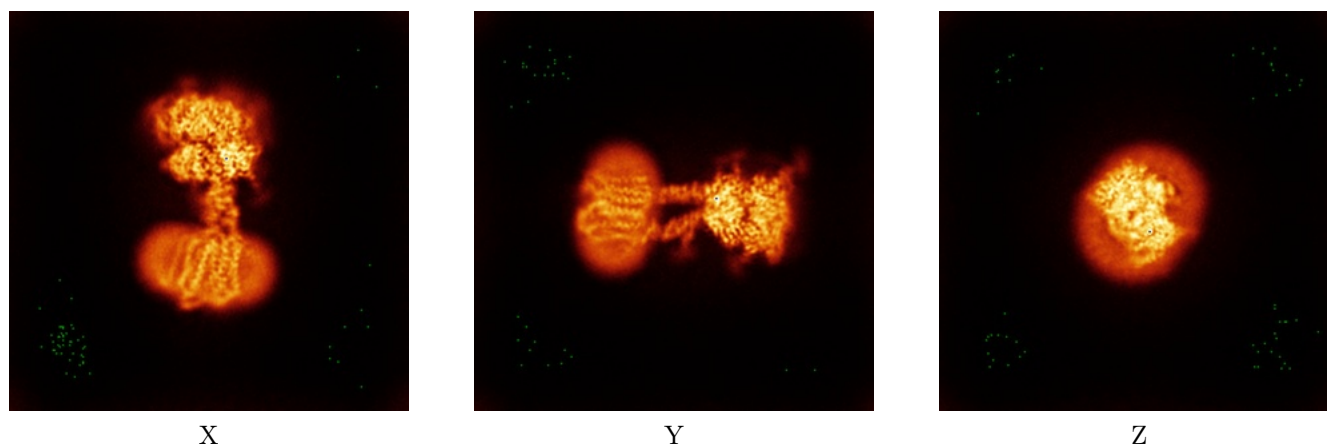
The images above show the largest variance slices of the map in three orthogonal directions.

6.4 Orthogonal standard-deviation projections (False-color) [i](#)

6.4.1 Primary map



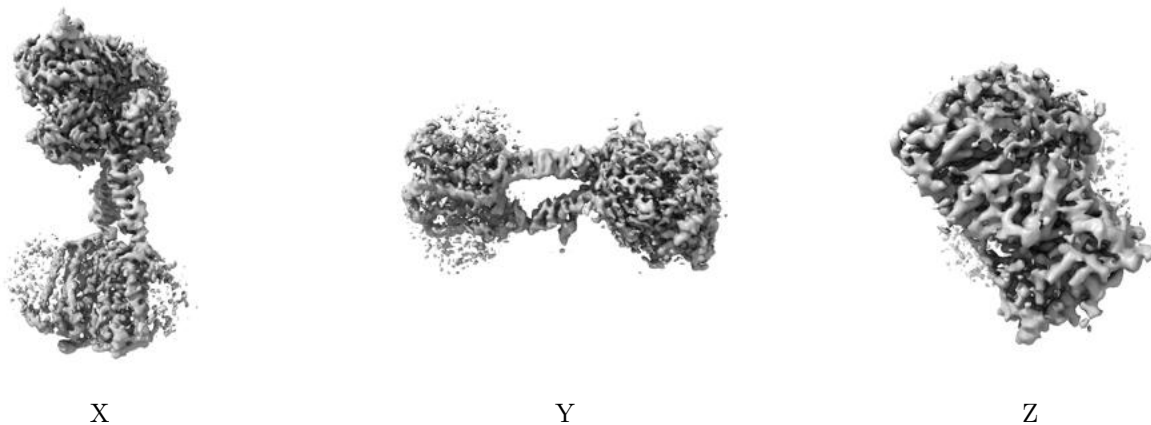
6.4.2 Raw map



The images above show the map standard deviation projections with false color in three orthogonal directions. Minimum values are shown in green, max in blue, and dark to light orange shades represent small to large values respectively.

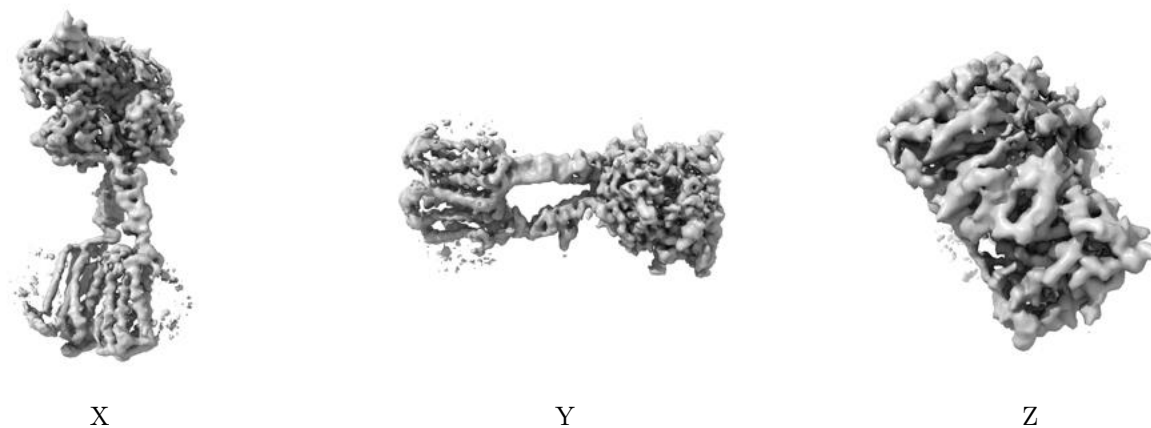
6.5 Orthogonal surface views [i](#)

6.5.1 Primary map



The images above show the 3D surface view of the map at the recommended contour level 0.584. These images, in conjunction with the slice images, may facilitate assessment of whether an appropriate contour level has been provided.

6.5.2 Raw map



These images show the 3D surface of the raw map. The raw map's contour level was selected so that its surface encloses the same volume as the primary map does at its recommended contour level.

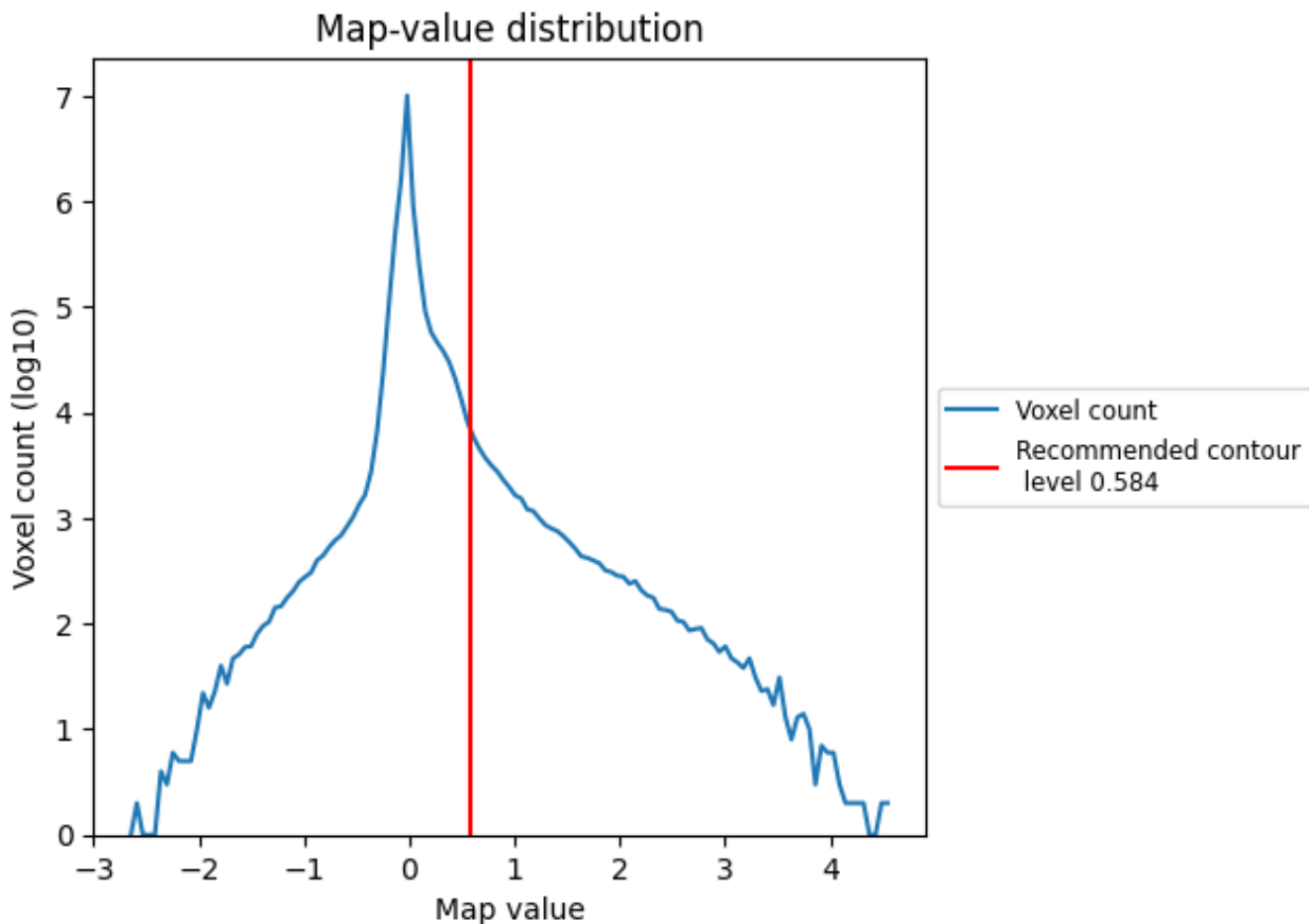
6.6 Mask visualisation [i](#)

This section was not generated. No masks/segmentation were deposited.

7 Map analysis [i](#)

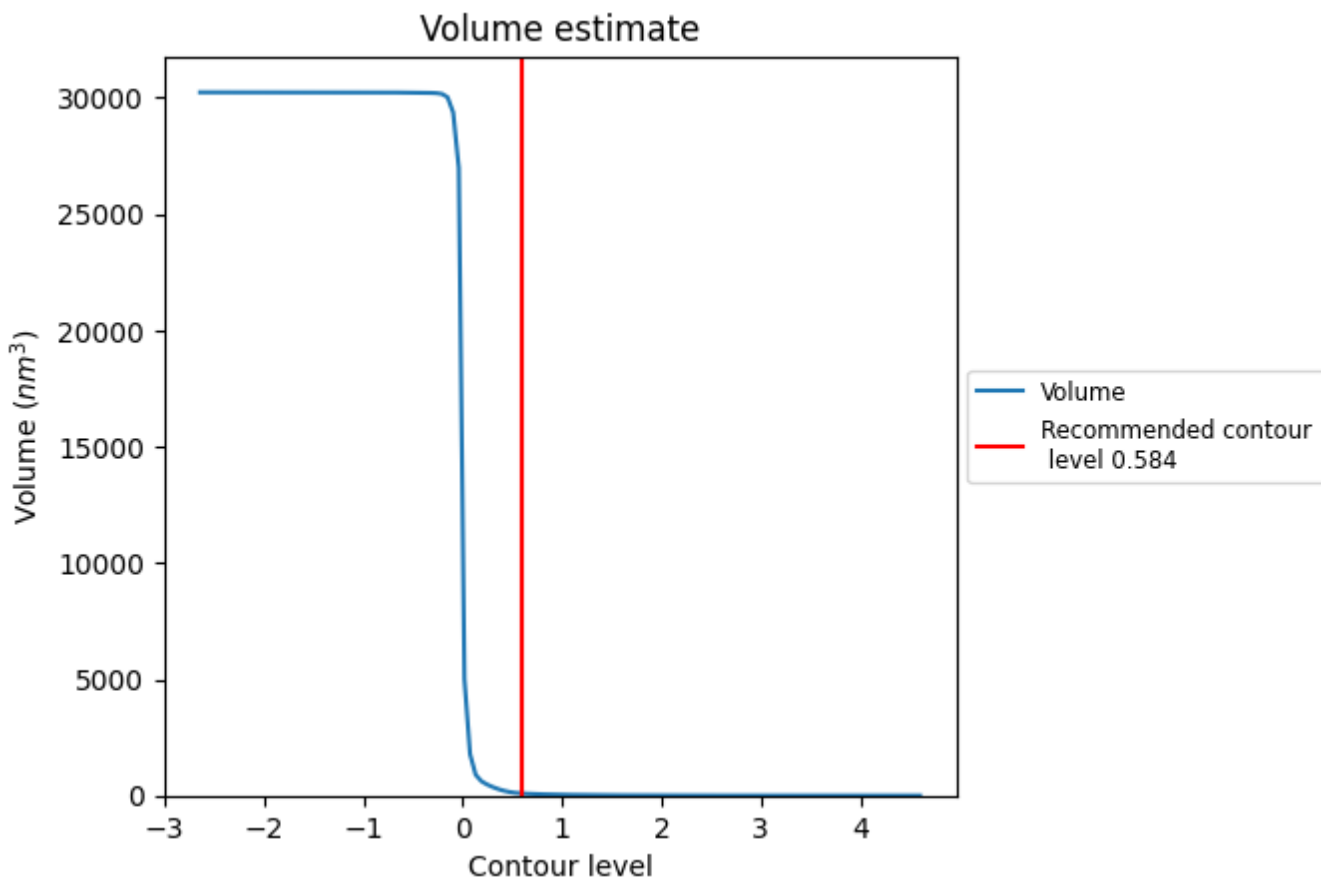
This section contains the results of statistical analysis of the map.

7.1 Map-value distribution [i](#)



The map-value distribution is plotted in 128 intervals along the x-axis. The y-axis is logarithmic. A spike in this graph at zero usually indicates that the volume has been masked.

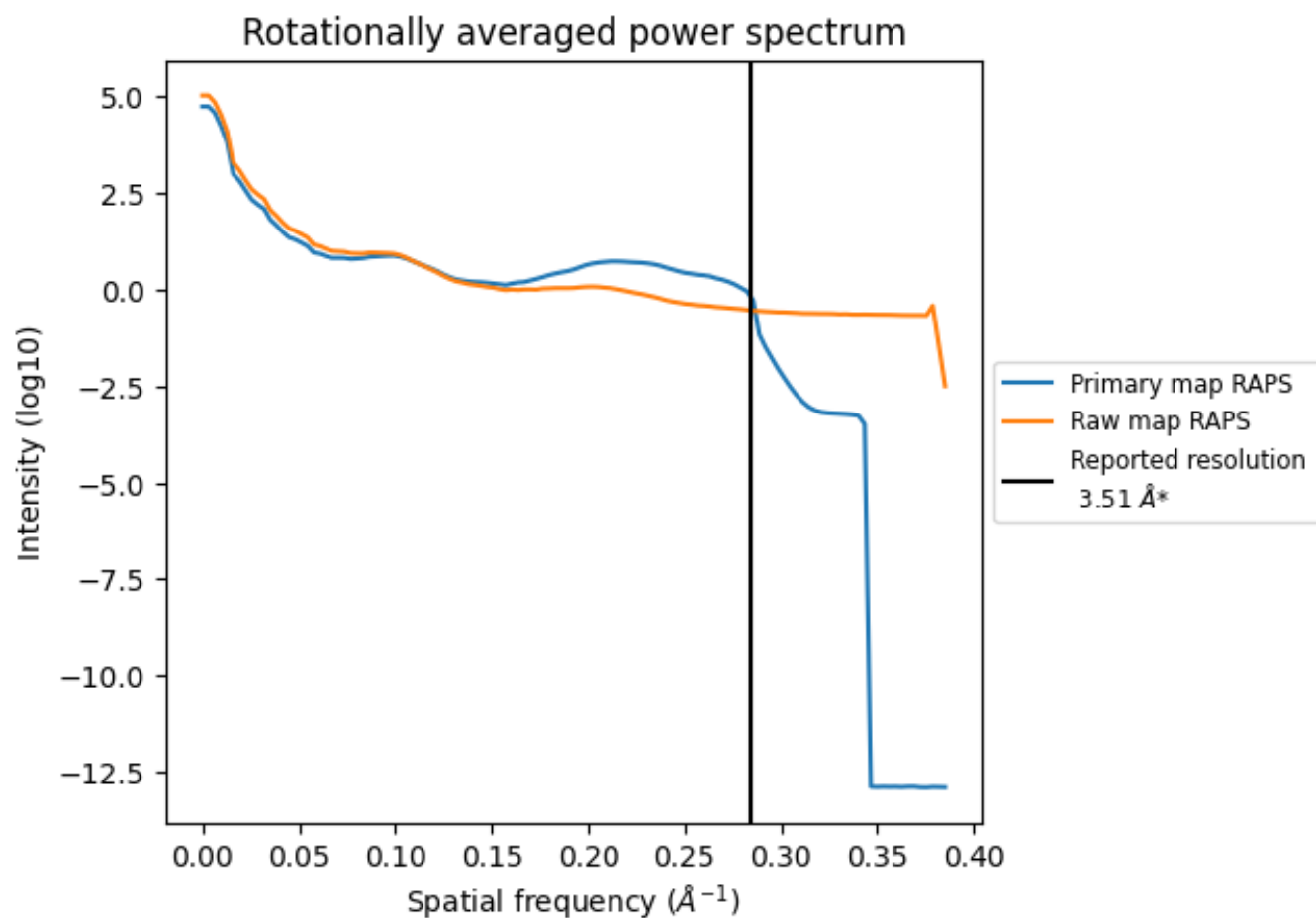
7.2 Volume estimate [i](#)



The volume at the recommended contour level is 95 nm³; this corresponds to an approximate mass of 86 kDa.

The volume estimate graph shows how the enclosed volume varies with the contour level. The recommended contour level is shown as a vertical line and the intersection between the line and the curve gives the volume of the enclosed surface at the given level.

7.3 Rotationally averaged power spectrum i

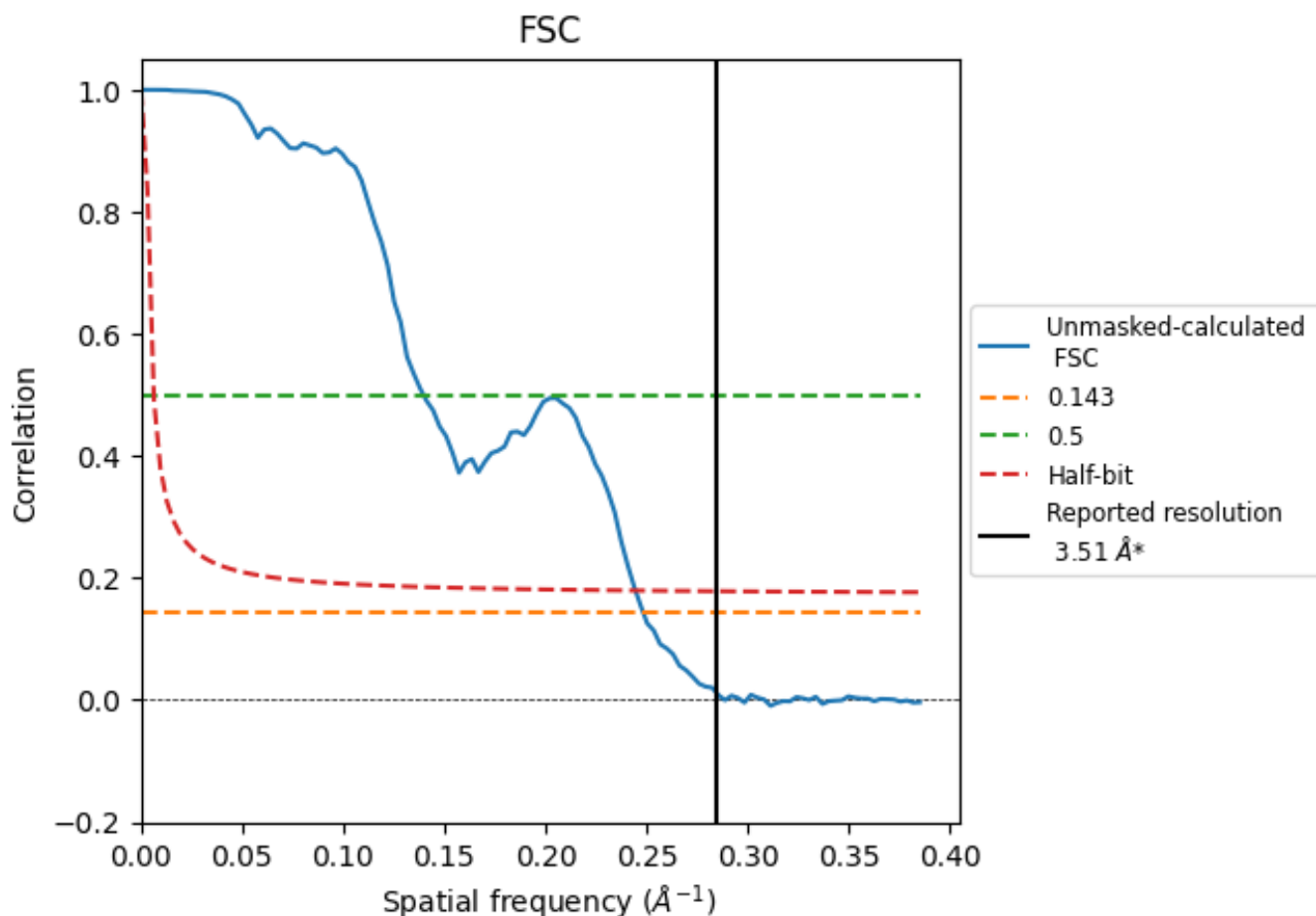


*Reported resolution corresponds to spatial frequency of 0.285 Å⁻¹

8 Fourier-Shell correlation [i](#)

Fourier-Shell Correlation (FSC) is the most commonly used method to estimate the resolution of single-particle and subtomogram-averaged maps. The shape of the curve depends on the imposed symmetry, mask and whether or not the two 3D reconstructions used were processed from a common reference. The reported resolution is shown as a black line. A curve is displayed for the half-bit criterion in addition to lines showing the 0.143 gold standard cut-off and 0.5 cut-off.

8.1 FSC [i](#)



*Reported resolution corresponds to spatial frequency of 0.285 Å⁻¹

8.2 Resolution estimates [i](#)

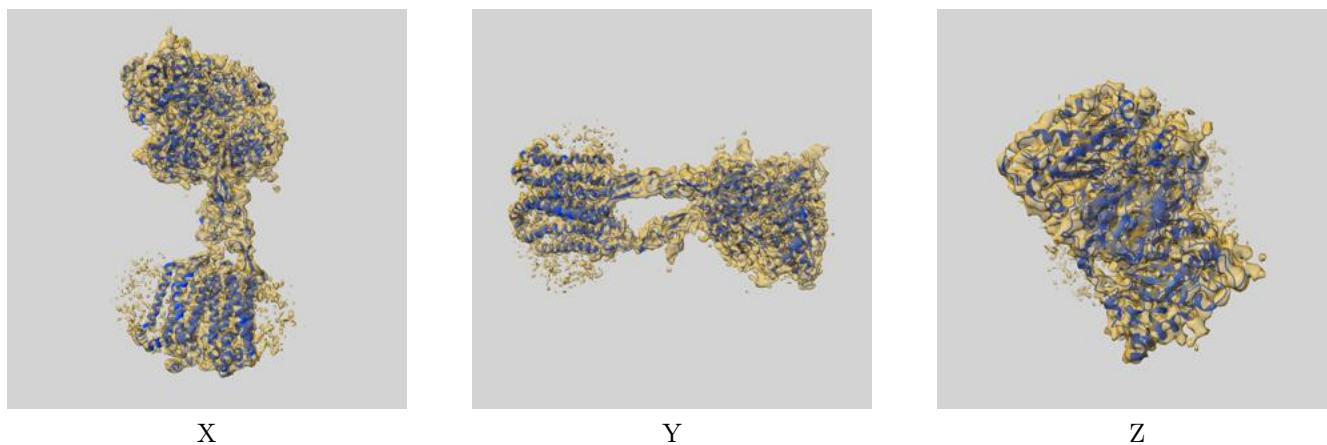
Resolution estimate (Å)	Estimation criterion (FSC cut-off)		
	0.143	0.5	Half-bit
Reported by author	3.51	-	-
Author-provided FSC curve	-	-	-
Unmasked-calculated*	4.03	7.15	4.09

*Resolution estimate based on FSC curve calculated by comparison of deposited half-maps. The value from deposited half-maps intersecting FSC 0.143 CUT-OFF 4.03 differs from the reported value 3.51 by more than 10 %

9 Map-model fit [i](#)

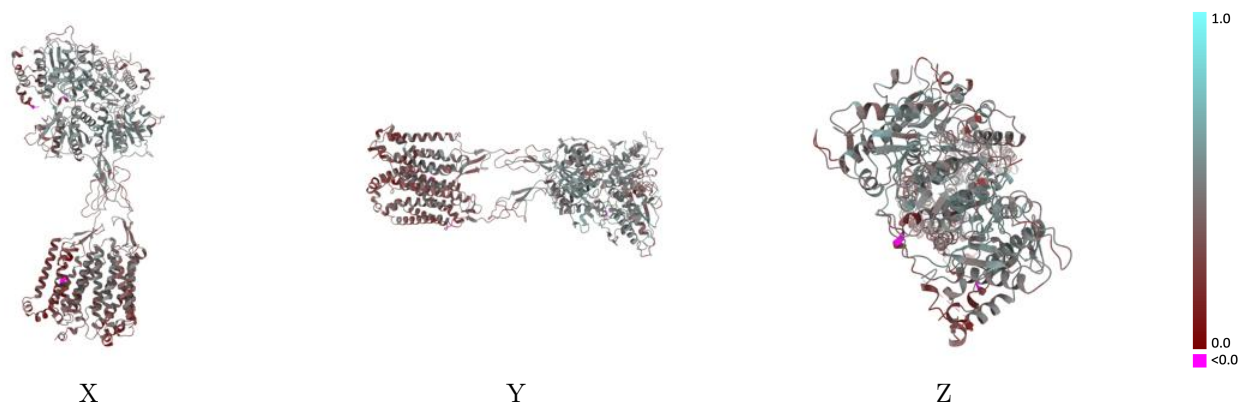
This section contains information regarding the fit between EMDB map EMD-70730 and PDB model 9OPY. Per-residue inclusion information can be found in section 3 on page 5.

9.1 Map-model overlay [i](#)



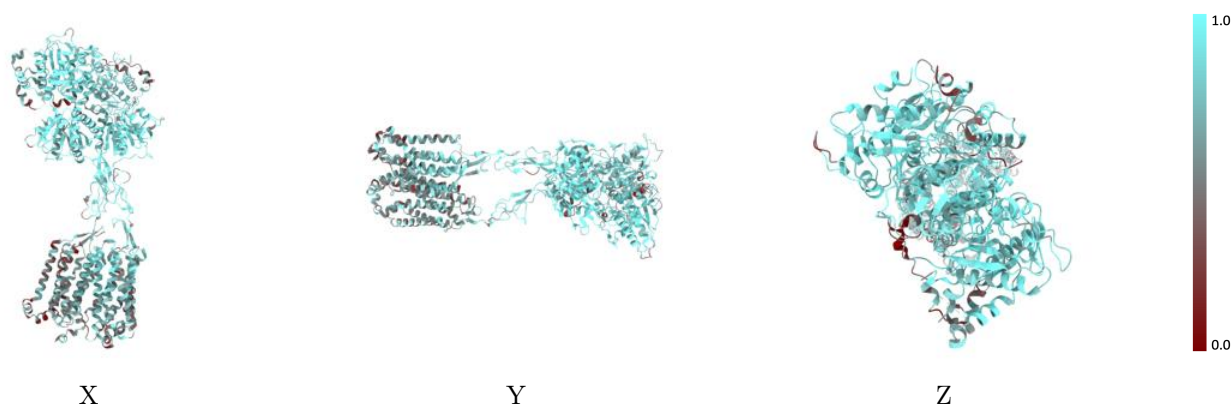
The images above show the 3D surface view of the map at the recommended contour level 0.584 at 50% transparency in yellow overlaid with a ribbon representation of the model coloured in blue. These images allow for the visual assessment of the quality of fit between the atomic model and the map.

9.2 Q-score mapped to coordinate model [\(i\)](#)



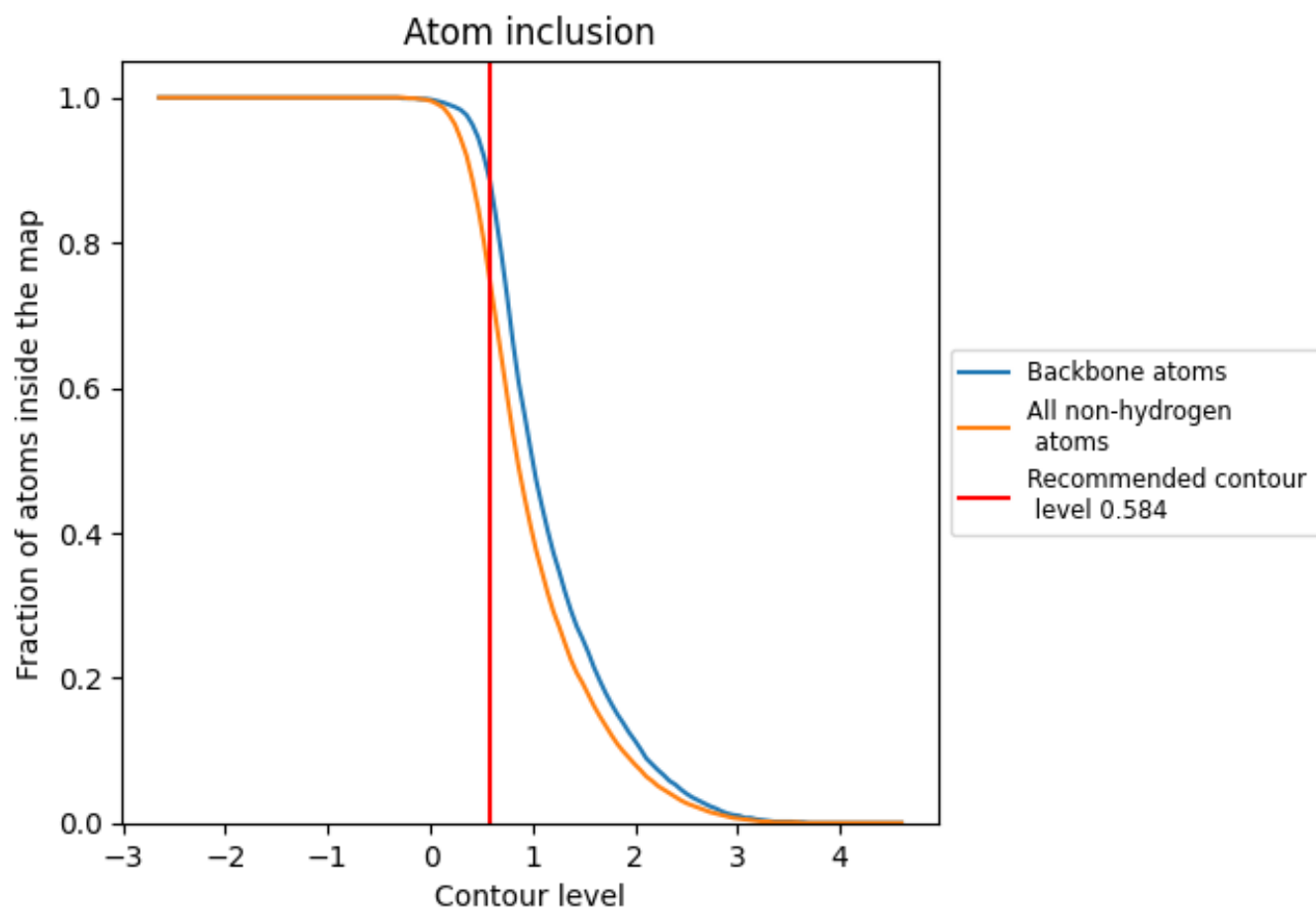
The images above show the model with each residue coloured according to its Q-score. This shows their resolvability in the map with higher Q-score values reflecting better resolvability. Please note: Q-score is calculating the resolvability of atoms, and thus high values are only expected at resolutions at which atoms can be resolved. Low Q-score values may therefore be expected for many entries.

9.3 Atom inclusion mapped to coordinate model [\(i\)](#)



The images above show the model with each residue coloured according to its atom inclusion. This shows to what extent they are inside the map at the recommended contour level (0.584).







9.4 Atom inclusion [i](#)



At the recommended contour level, 88% of all backbone atoms, 75% of all non-hydrogen atoms, are inside the map.

9.5 Map-model fit summary

The table lists the average atom inclusion at the recommended contour level (0.584) and Q-score for the entire model and for each chain.

Chain	Atom inclusion	Q-score
All	 0.7470	 0.4210
A	 0.7430	 0.4160
B	 0.7510	 0.4250

