



wwPDB X-ray Structure Validation Summary Report ⓘ

Mar 8, 2026 – 09:21 AM UTC

PDB ID : 2OR4 / pdb_00002or4
Title : A high resolution crystal structure of human glutamate carboxypeptidase II
in complex with quisqualic acid
Authors : Barinka, C.; Lubkowski, J.
Deposited on : 2007-02-01
Resolution : 1.62 Å(reported)

This is a wwPDB X-ray Structure Validation Summary Report for a publicly released PDB entry.

We welcome your comments at validation@mail.wwpdb.org

A user guide is available at

<https://www.wwpdb.org/validation/2017/XrayValidationReportHelp>

with specific help available everywhere you see the ⓘ symbol.

The types of validation reports are described at

<http://www.wwpdb.org/validation/2017/FAQs#types>.

The following versions of software and data (see [references ⓘ](#)) were used in the production of this report:

MolProbity : 4-5-2 with Phenix2.0
Mogul : 2022.3.0, CSD as543be (2022)
Xtriage (Phenix) : 2.0
EDS : 3.0
Percentile statistics : 20250101.v01 (using entries in the PDB archive January 1st 2025)
CCP4 : 9.0.010 (Gargrove)
Density-Fitness : 1.0.12
Ideal geometry (proteins) : Engh & Huber (2001)
Ideal geometry (DNA, RNA) : Parkinson et al. (1996)
Validation Pipeline (wwPDB-VP) : 2.49

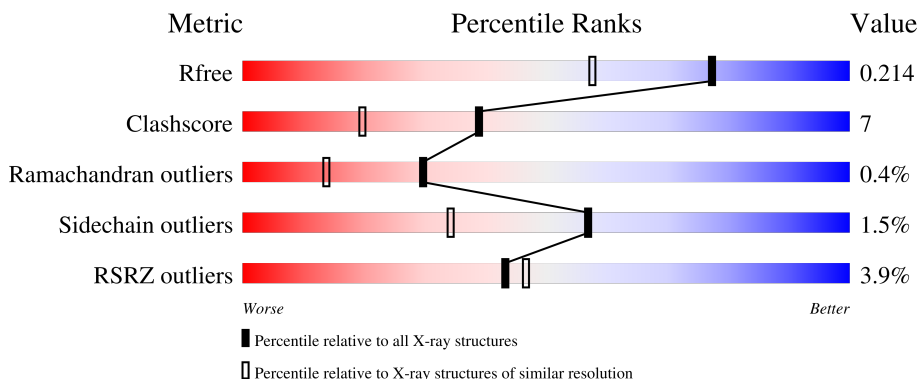
1 Overall quality at a glance

The following experimental techniques were used to determine the structure:

X-RAY DIFFRACTION

The reported resolution of this entry is 1.62 Å.

Percentile scores (ranging between 0-100) for global validation metrics of the entry are shown in the following graphic. The table shows the number of entries on which the scores are based.



Metric	Whole archive (#Entries)	Similar resolution (#Entries, resolution range(Å))
R_{free}	180053	6728 (1.64-1.60)
Clashscore	190562	7023 (1.64-1.60)
Ramachandran outliers	187476	6898 (1.64-1.60)
Sidechain outliers	187428	6896 (1.64-1.60)
RSRZ outliers	180081	6727 (1.64-1.60)

The table below summarises the geometric issues observed across the polymeric chains and their fit to the electron density. The red, orange, yellow and green segments of the lower bar indicate the fraction of residues that contain outliers for ≥ 3 , 2, 1 and 0 types of geometric quality criteria respectively. A grey segment represents the fraction of residues that are not modelled. The numeric value for each fraction is indicated below the corresponding segment, with a dot representing fractions $\leq 5\%$. The upper red bar (where present) indicates the fraction of residues that have poor fit to the electron density. The numeric value is given above the bar.

Mol	Chain	Length	Quality of chain
1	A	709	
2	B	2	
2	C	2	
2	D	2	
3	E	4	

The following table lists non-polymeric compounds, carbohydrate monomers and non-standard residues in protein, DNA, RNA chains that are outliers for geometric or electron-density-fit criteria:

Mol	Type	Chain	Res	Chirality	Geometry	Clashes	Electron density
3	MAN	E	4	X	-	-	-

2 Entry composition [i](#)

There are 9 unique types of molecules in this entry. The entry contains 6771 atoms, of which 0 are hydrogens and 0 are deuteriums.

In the tables below, the ZeroOcc column contains the number of atoms modelled with zero occupancy, the AltConf column contains the number of residues with at least one atom in alternate conformation and the Trace column contains the number of residues modelled with at most 2 atoms.

- Molecule 1 is a protein called Glutamate carboxypeptidase 2.

Mol	Chain	Residues	Atoms					ZeroOcc	AltConf	Trace
			Total	C	N	O	S			
1	A	689	5704	3671	951	1061	21	0	48	0

There are 2 discrepancies between the modelled and reference sequences:

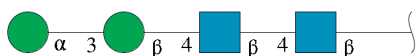
Chain	Residue	Modelled	Actual	Comment	Reference
A	42	ARG	-	expression tag	UNP Q04609
A	43	SER	-	expression tag	UNP Q04609

- Molecule 2 is an oligosaccharide called 2-acetamido-2-deoxy-beta-D-glucopyranose-(1-4)-2-acetamido-2-deoxy-beta-D-glucopyranose.



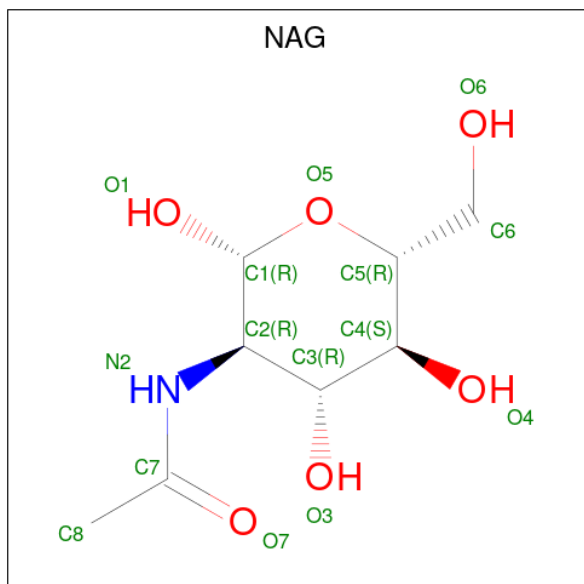
Mol	Chain	Residues	Atoms				ZeroOcc	AltConf	Trace
			Total	C	N	O			
2	B	2	28	16	2	10	0	0	0
2	C	2	28	16	2	10	0	0	0
2	D	2	28	16	2	10	0	0	0

- Molecule 3 is an oligosaccharide called alpha-D-mannopyranose-(1-3)-beta-D-mannopyranose-(1-4)-2-acetamido-2-deoxy-beta-D-glucopyranose-(1-4)-2-acetamido-2-deoxy-beta-D-glucopyranose.



Mol	Chain	Residues	Atoms				ZeroOcc	AltConf	Trace
			Total	C	N	O			
3	E	4	50	28	2	20	0	0	0

- Molecule 4 is 2-acetamido-2-deoxy-beta-D-glucopyranose (CCD ID: NAG) (formula: $C_8H_{15}NO_6$).



Mol	Chain	Residues	Atoms				ZeroOcc	AltConf
			Total	C	N	O		
4	A	1	14	8	1	5	0	0
4	A	1	14	8	1	5	0	0
4	A	1	14	8	1	5	0	0

- Molecule 5 is ZINC ION (CCD ID: ZN) (formula: Zn).

Mol	Chain	Residues	Atoms		ZeroOcc	AltConf
			Total	Zn		
5	A	2	2	2	0	0

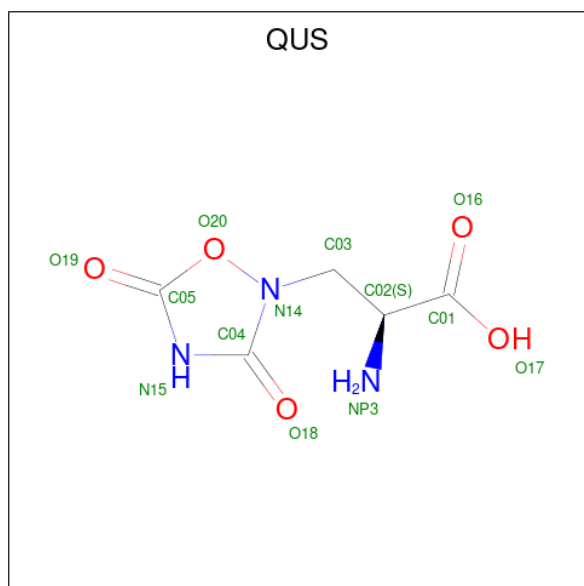
- Molecule 6 is CALCIUM ION (CCD ID: CA) (formula: Ca).

Mol	Chain	Residues	Atoms		ZeroOcc	AltConf
			Total	Ca		
6	A	1	1	1	0	0

- Molecule 7 is CHLORIDE ION (CCD ID: CL) (formula: Cl).

Mol	Chain	Residues	Atoms	ZeroOcc	AltConf
7	A	1	Total Cl 1 1	0	0

- Molecule 8 is (S)-2-AMINO-3-(3,5-DIOXO-[1,2,4]OXADIAZOLIDIN-2-YL)-PROPIONIC ACID (CCD ID: QUS) (formula: C₅H₇N₃O₅).



Mol	Chain	Residues	Atoms	ZeroOcc	AltConf
8	A	1	Total C N O 13 5 3 5	0	0

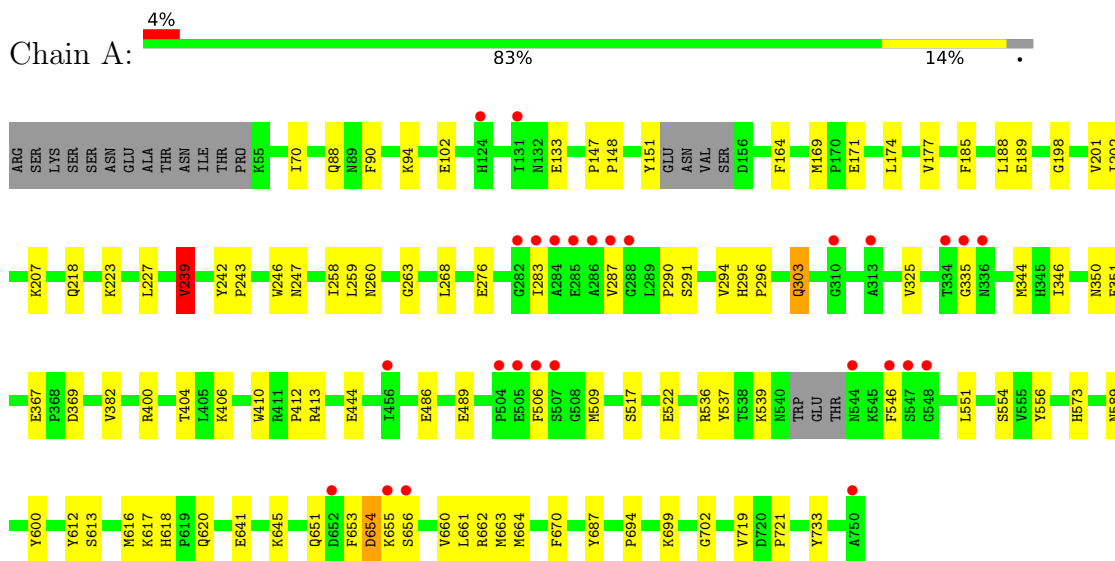
- Molecule 9 is water.

Mol	Chain	Residues	Atoms	ZeroOcc	AltConf
9	A	874	Total O 874 874	0	0

3 Residue-property plots [i](#)

These plots are drawn for all protein, RNA, DNA and oligosaccharide chains in the entry. The first graphic for a chain summarises the proportions of the various outlier classes displayed in the second graphic. The second graphic shows the sequence view annotated by issues in geometry and electron density. Residues are color-coded according to the number of geometric quality criteria for which they contain at least one outlier: green = 0, yellow = 1, orange = 2 and red = 3 or more. A red dot above a residue indicates a poor fit to the electron density ($RSRZ > 2$). Stretches of 2 or more consecutive residues without any outlier are shown as a green connector. Residues present in the sample, but not in the model, are shown in grey.

- Molecule 1: Glutamate carboxypeptidase 2



- Molecule 2: 2-acetamido-2-deoxy-beta-D-glucopyranose-(1-4)-2-acetamido-2-deoxy-beta-D-glucopyranose



- Molecule 2: 2-acetamido-2-deoxy-beta-D-glucopyranose-(1-4)-2-acetamido-2-deoxy-beta-D-glucopyranose



- Molecule 2: 2-acetamido-2-deoxy-beta-D-glucopyranose-(1-4)-2-acetamido-2-deoxy-beta-D-glucopyranose



MAG1
MAG2

- Molecule 3: alpha-D-mannopyranose-(1-3)-beta-D-mannopyranose-(1-4)-2-acetamido-2-deoxy-beta-D-glucopyranose-(1-4)-2-acetamido-2-deoxy-beta-D-glucopyranose

Chain E:

75%

25%

MAG1
MAG2
BMA3
MAN4

4 Data and refinement statistics

Property	Value	Source
Space group	I 2 2 2	Depositor
Cell constants a, b, c, α , β , γ	102.01Å 130.44Å 159.51Å 90.00° 90.00° 90.00°	Depositor
Resolution (Å)	30.00 – 1.62 30.00 – 1.62	Depositor EDS
% Data completeness (in resolution range)	96.6 (30.00-1.62) 96.5 (30.00-1.62)	Depositor EDS
R_{merge}	0.07	Depositor
R_{sym}	(Not available)	Depositor
$\langle I/\sigma(I) \rangle$ ¹	1.62 (at 1.62Å)	Xtrriage
Refinement program	REFMAC 5.2.0005	Depositor
R, R_{free}	0.184 , 0.219 0.181 , 0.214	Depositor DCC
R_{free} test set	6521 reflections (4.86%)	wwPDB-VP
Wilson B-factor (Å ²)	20.8	Xtrriage
Anisotropy	0.583	Xtrriage
Bulk solvent k_{sol} (e/Å ³), B_{sol} (Å ²)	0.34 , 54.7	EDS
L-test for twinning ²	$\langle L \rangle = 0.51$, $\langle L^2 \rangle = 0.35$	Xtrriage
Estimated twinning fraction	No twinning to report.	Xtrriage
F_o, F_c correlation	0.97	EDS
Total number of atoms	6771	wwPDB-VP
Average B, all atoms (Å ²)	27.0	wwPDB-VP

Xtrriage's analysis on translational NCS is as follows: *The largest off-origin peak in the Patterson function is 3.68% of the height of the origin peak. No significant pseudotranslation is detected.*

¹Intensities estimated from amplitudes.

²Theoretical values of $\langle |L| \rangle$, $\langle L^2 \rangle$ for acentric reflections are 0.5, 0.333 respectively for untwinned datasets, and 0.375, 0.2 for perfectly twinned datasets.

5 Model quality [i](#)

5.1 Standard geometry [i](#)

Bond lengths and bond angles in the following residue types are not validated in this section: ZN, BMA, CA, MAN, QUS, NAG, CL

The Z score for a bond length (or angle) is the number of standard deviations the observed value is removed from the expected value. A bond length (or angle) with $|Z| > 5$ is considered an outlier worth inspection. RMSZ is the root-mean-square of all Z scores of the bond lengths (or angles).

Mol	Chain	Bond lengths		Bond angles	
		RMSZ	# Z >5	RMSZ	# Z >5
1	A	1.14	5/6029 (0.1%)	1.11	5/8161 (0.1%)

All (5) bond length outliers are listed below:

Mol	Chain	Res	Type	Atoms	Z	Observed(Å)	Ideal(Å)
1	A	554[A]	SER	CA-C	6.79	1.60	1.52
1	A	554[B]	SER	CA-C	6.79	1.60	1.52
1	A	670	PHE	N-CA	5.83	1.53	1.46
1	A	239[A]	VAL	CA-CB	5.36	1.63	1.55
1	A	239[B]	VAL	CA-CB	5.36	1.63	1.55

All (5) bond angle outliers are listed below:

Mol	Chain	Res	Type	Atoms	Z	Observed(°)	Ideal(°)
1	A	147	PRO	O-C-N	6.72	124.31	121.15
1	A	663[A]	MET	N-CA-C	-6.51	104.27	111.36
1	A	663[B]	MET	N-CA-C	-6.51	104.27	111.36
1	A	367	GLU	O-C-N	5.60	126.52	121.42
1	A	702	GLY	N-CA-C	-5.15	105.16	112.37

There are no chirality outliers.

There are no planarity outliers.

5.2 Too-close contacts [i](#)

In the following table, the Non-H and H(model) columns list the number of non-hydrogen atoms and hydrogen atoms in the chain respectively. The H(added) column lists the number of hydrogen atoms added and optimized by MolProbity. The Clashes column lists the number of clashes within the asymmetric unit, whereas Symm-Clashes lists symmetry-related clashes.

Mol	Chain	Non-H	H(model)	H(added)	Clashes	Symm-Clashes
1	A	5704	0	5573	74	1
2	B	28	0	25	2	0
2	C	28	0	25	2	0
2	D	28	0	25	0	0
3	E	50	0	43	0	1
4	A	42	0	39	2	0
5	A	2	0	0	0	0
6	A	1	0	0	0	0
7	A	1	0	0	0	0
8	A	13	0	6	0	0
9	A	874	0	0	29	1
All	All	6771	0	5736	79	2

The all-atom clashscore is defined as the number of clashes found per 1000 atoms (including hydrogen atoms). The all-atom clashscore for this structure is 7.

The worst 5 of 79 close contacts within the same asymmetric unit are listed below, sorted by their clash magnitude.

Atom-1	Atom-2	Interatomic distance (Å)	Clash overlap (Å)
1:A:660[A]:VAL:O	1:A:664[A]:MET:HG2	1.47	1.13
1:A:486:GLU:HG2	9:A:1232:HOH:O	1.47	1.12
1:A:189:GLU:HG2	9:A:1027:HOH:O	1.56	1.05
1:A:258[B]:ILE:CD1	1:A:290:PRO:HG3	2.01	0.91
1:A:655[A]:LYS:HG2	9:A:903:HOH:O	1.75	0.84

All (2) symmetry-related close contacts are listed below. The label for Atom-2 includes the symmetry operator and encoded unit-cell translations to be applied.

Atom-1	Atom-2	Interatomic distance (Å)	Clash overlap (Å)
1:A:276[D]:GLU:OE1	3:E:3:BMA:O2[2_565]	2.01	0.19
9:A:1342:HOH:O	9:A:1536:HOH:O[2_565]	2.15	0.05

5.3 Torsion angles [i](#)

5.3.1 Protein backbone [i](#)

In the following table, the Percentiles column shows the percent Ramachandran outliers of the chain as a percentile score with respect to all X-ray entries followed by that with respect to entries of similar resolution.

The Analysed column shows the number of residues for which the backbone conformation was

analysed, and the total number of residues.

Mol	Chain	Analysed	Favoured	Allowed	Outliers	Percentiles
1	A	731/709 (103%)	708 (97%)	19 (3%)	4 (0%)	24 10

All (4) Ramachandran outliers are listed below:

Mol	Chain	Res	Type
1	A	654[A]	ASP
1	A	654[B]	ASP
1	A	382	VAL
1	A	335	GLY

5.3.2 Protein sidechains [i](#)

In the following table, the Percentiles column shows the percent sidechain outliers of the chain as a percentile score with respect to all X-ray entries followed by that with respect to entries of similar resolution.

The Analysed column shows the number of residues for which the sidechain conformation was analysed, and the total number of residues.

Mol	Chain	Analysed	Rotameric	Outliers	Percentiles
1	A	634/605 (105%)	623 (98%)	11 (2%)	53 29

5 of 11 residues with a non-rotameric sidechain are listed below:

Mol	Chain	Res	Type
1	A	537	TYR
1	A	539	LYS
1	A	719	VAL
1	A	600	TYR
1	A	489	GLU

Sometimes sidechains can be flipped to improve hydrogen bonding and reduce clashes. 5 of 6 such sidechains are listed below:

Mol	Chain	Res	Type
1	A	544	ASN
1	A	618	HIS
1	A	667	GLN
1	A	95	GLN
1	A	91	GLN

5.3.3 RNA [i](#)

There are no RNA molecules in this entry.

5.4 Non-standard residues in protein, DNA, RNA chains [i](#)

There are no non-standard protein/DNA/RNA residues in this entry.

5.5 Carbohydrates [i](#)

10 monosaccharides are modelled in this entry.

In the following table, the Counts columns list the number of bonds (or angles) for which Mogul statistics could be retrieved, the number of bonds (or angles) that are observed in the model and the number of bonds (or angles) that are defined in the Chemical Component Dictionary. The Link column lists molecule types, if any, to which the group is linked. The Z score for a bond length (or angle) is the number of standard deviations the observed value is removed from the expected value. A bond length (or angle) with $|Z| > 2$ is considered an outlier worth inspection. RMSZ is the root-mean-square of all Z scores of the bond lengths (or angles).

Mol	Type	Chain	Res	Link	Bond lengths			Bond angles		
					Counts	RMSZ	# Z > 2	Counts	RMSZ	# Z > 2
2	NAG	B	1	1,2	14,14,15	0.66	0	17,19,21	1.46	4 (23%)
2	NAG	B	2	2	14,14,15	0.62	0	17,19,21	1.02	1 (5%)
2	NAG	C	1	1,2	14,14,15	0.83	0	17,19,21	1.15	1 (5%)
2	NAG	C	2	2	14,14,15	0.44	0	17,19,21	1.25	1 (5%)
2	NAG	D	1	1,2	14,14,15	1.06	1 (7%)	17,19,21	1.75	2 (11%)
2	NAG	D	2	2	14,14,15	0.52	0	17,19,21	1.20	3 (17%)
3	NAG	E	1	3,1	14,14,15	0.94	1 (7%)	17,19,21	1.28	3 (17%)
3	NAG	E	2	3	14,14,15	0.73	1 (7%)	17,19,21	1.72	4 (23%)
3	BMA	E	3	3	11,11,12	0.88	1 (9%)	15,15,17	1.41	1 (6%)
3	MAN	E	4	3	11,11,12	0.59	0	15,15,17	3.66	3 (20%)

In the following table, the Chirals column lists the number of chiral outliers, the number of chiral centers analysed, the number of these observed in the model and the number defined in the Chemical Component Dictionary. Similar counts are reported in the Torsion and Rings columns. '-' means no outliers of that kind were identified.

Mol	Type	Chain	Res	Link	Chirals	Torsions	Rings
2	NAG	B	1	1,2	-	0/6/23/26	0/1/1/1
2	NAG	B	2	2	-	2/6/23/26	0/1/1/1

Continued on next page...

Continued from previous page...

Mol	Type	Chain	Res	Link	Chirals	Torsions	Rings
2	NAG	C	1	1,2	-	0/6/23/26	0/1/1/1
2	NAG	C	2	2	-	2/6/23/26	0/1/1/1
2	NAG	D	1	1,2	-	2/6/23/26	0/1/1/1
2	NAG	D	2	2	-	2/6/23/26	0/1/1/1
3	NAG	E	1	3,1	-	0/6/23/26	0/1/1/1
3	NAG	E	2	3	-	2/6/23/26	0/1/1/1
3	BMA	E	3	3	-	0/2/19/22	0/1/1/1
3	MAN	E	4	3	1/1/4/5	0/2/19/22	0/1/1/1

All (4) bond length outliers are listed below:

Mol	Chain	Res	Type	Atoms	Z	Observed(Å)	Ideal(Å)
3	E	1	NAG	C1-C2	2.49	1.55	1.52
2	D	1	NAG	O7-C7	2.42	1.28	1.23
3	E	3	BMA	O5-C1	-2.32	1.39	1.43
3	E	2	NAG	O5-C1	-2.06	1.40	1.43

The worst 5 of 23 bond angle outliers are listed below:

Mol	Chain	Res	Type	Atoms	Z	Observed(°)	Ideal(°)
3	E	4	MAN	C1-O5-C5	-11.40	96.91	112.19
3	E	4	MAN	C1-C2-C3	-7.35	98.95	109.64
2	D	1	NAG	O5-C1-C2	-5.01	103.54	111.29
3	E	3	BMA	O3-C3-C4	-4.60	99.54	110.38
2	C	1	NAG	O5-C1-C2	-3.84	105.34	111.29

All (1) chirality outliers are listed below:

Mol	Chain	Res	Type	Atom
3	E	4	MAN	C1

5 of 10 torsion outliers are listed below:

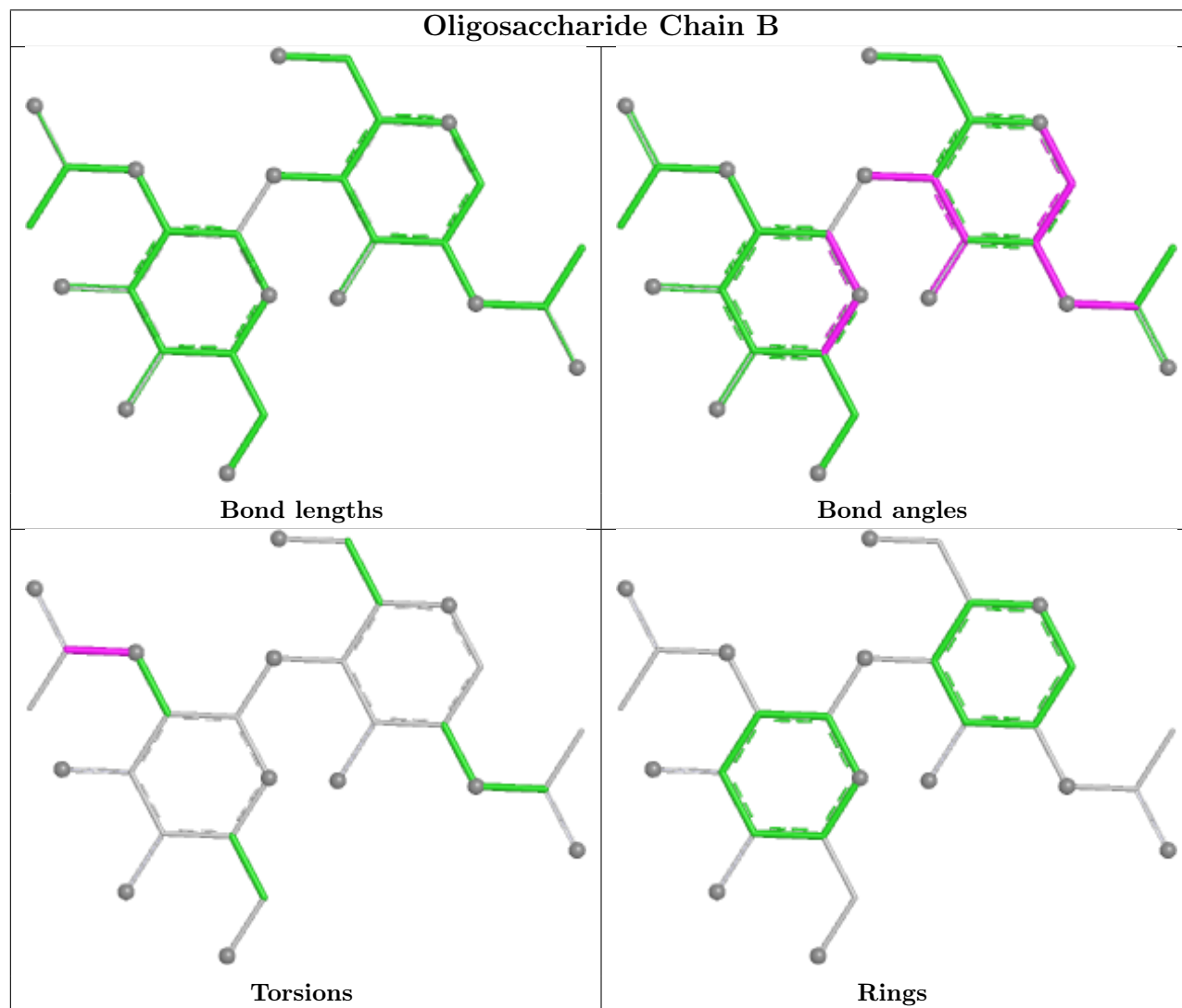
Mol	Chain	Res	Type	Atoms
2	B	2	NAG	C8-C7-N2-C2
2	B	2	NAG	O7-C7-N2-C2
2	C	2	NAG	C8-C7-N2-C2
2	C	2	NAG	O7-C7-N2-C2
2	D	1	NAG	C8-C7-N2-C2

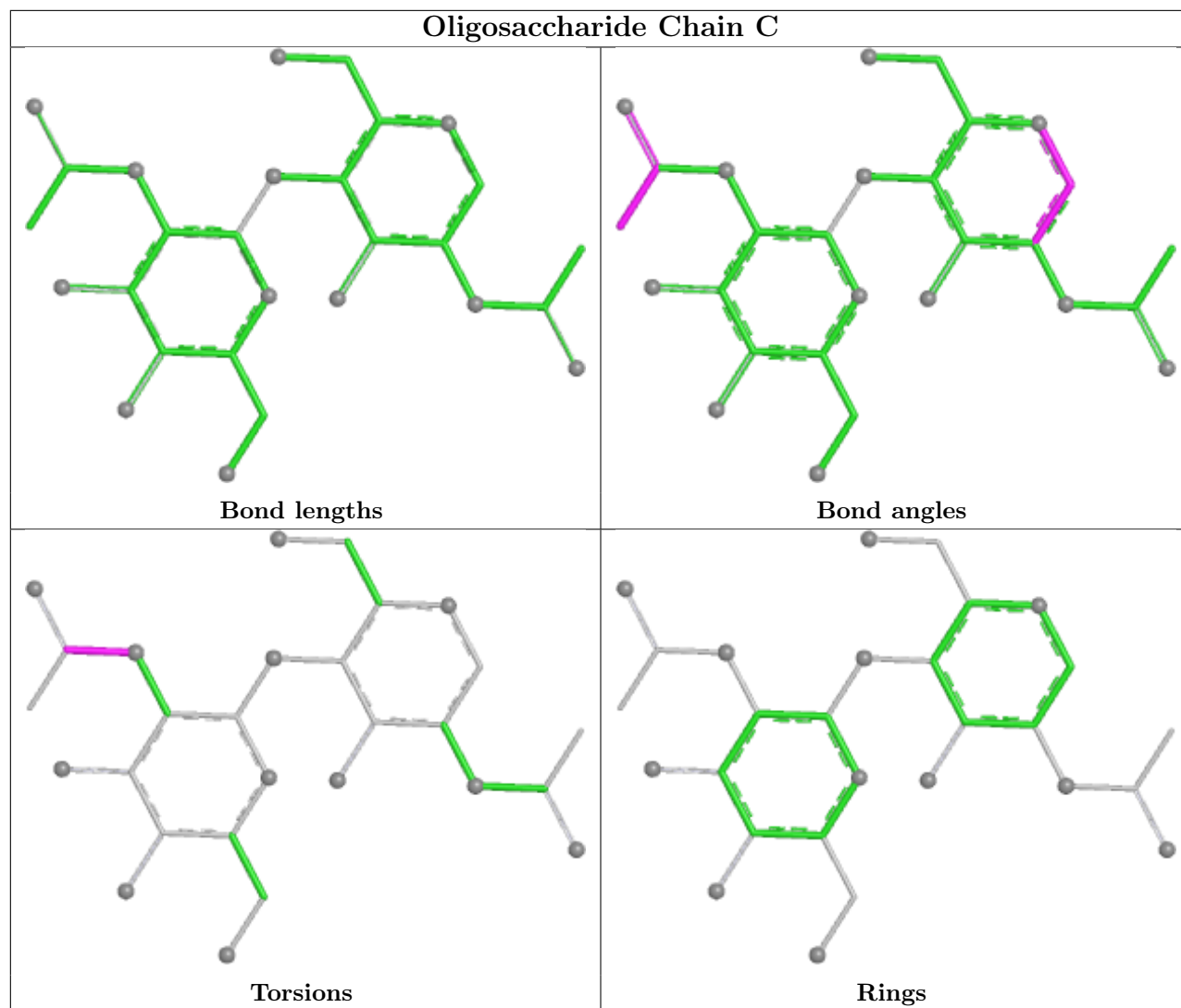
There are no ring outliers.

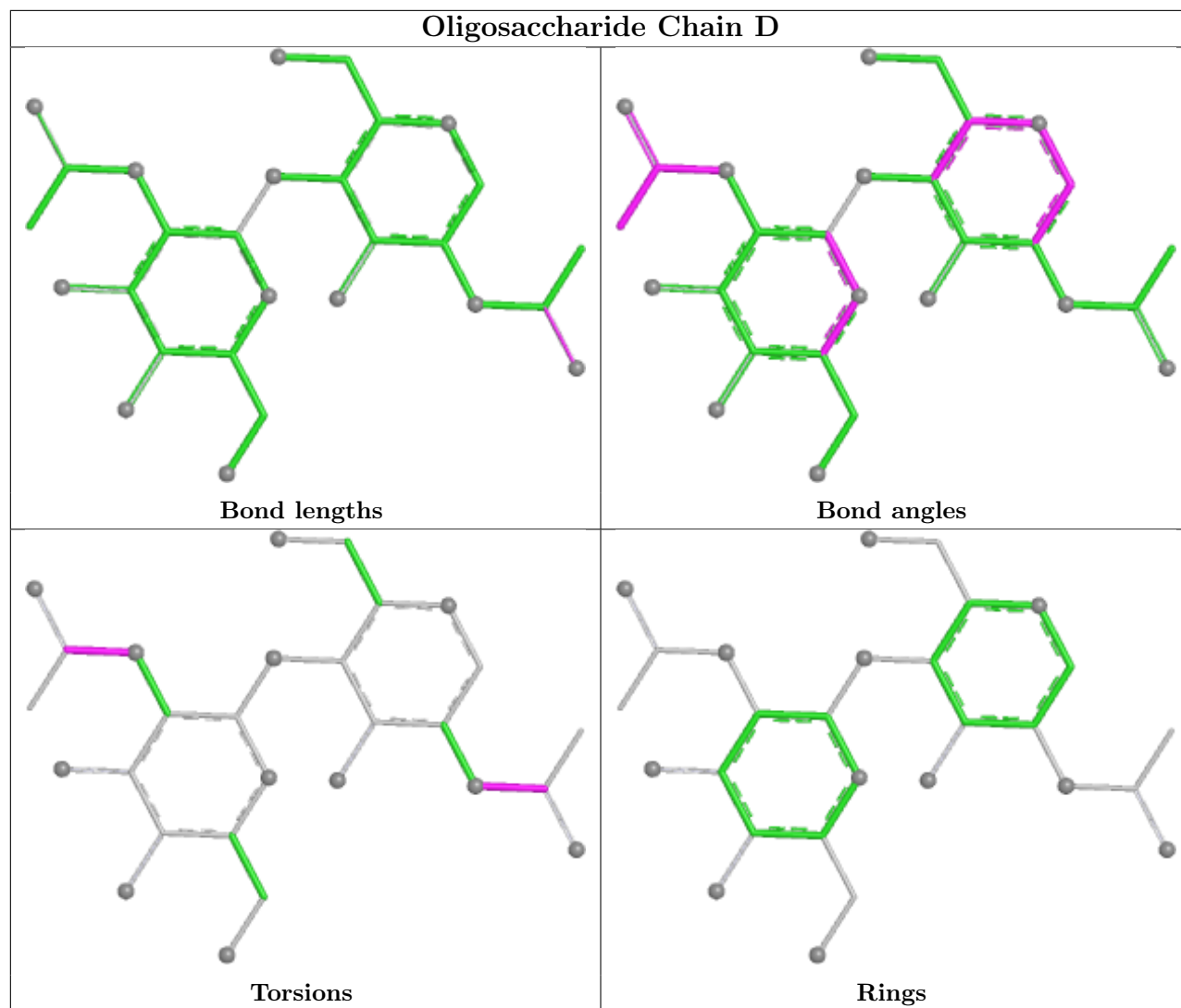
3 monomers are involved in 5 short contacts:

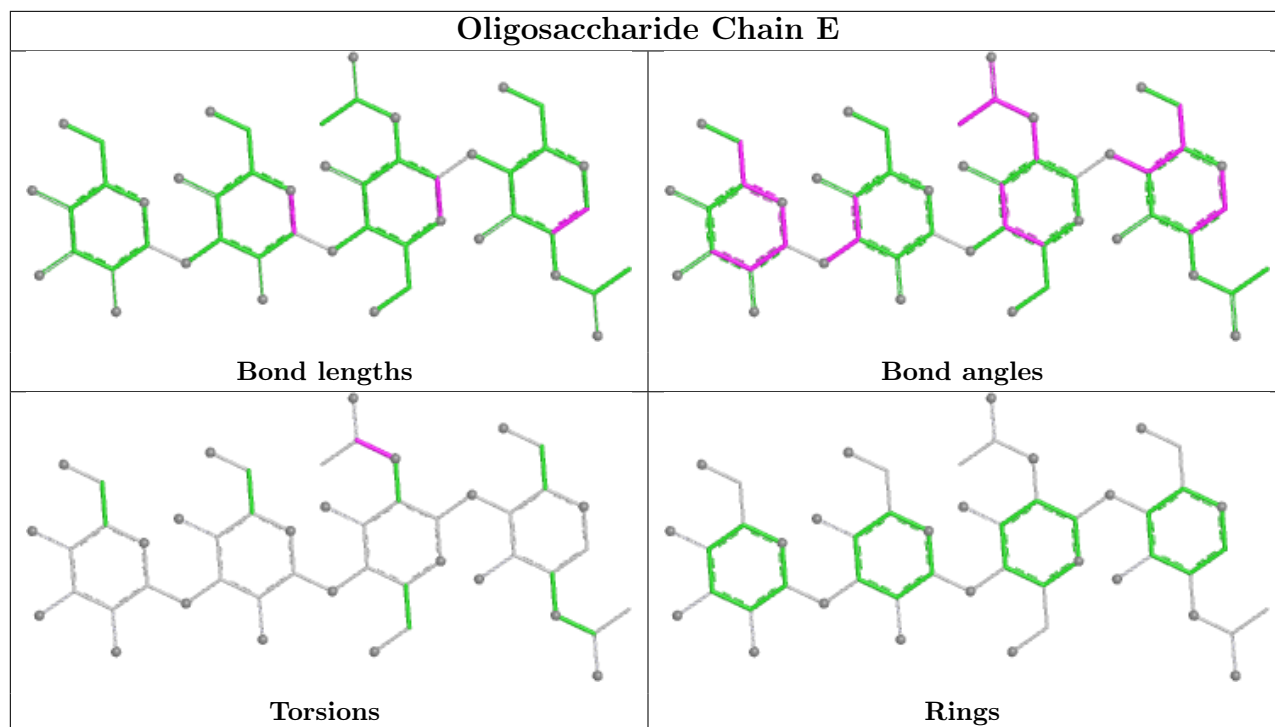
Mol	Chain	Res	Type	Clashes	Symm-Clashes
3	E	3	BMA	0	1
2	B	2	NAG	2	0
2	C	2	NAG	2	0

The following is a two-dimensional graphical depiction of Mogul quality analysis of bond lengths, bond angles, torsion angles, and ring geometry for oligosaccharide.









5.6 Ligand geometry [i](#)

Of 8 ligands modelled in this entry, 4 are monoatomic - leaving 4 for Mogul analysis.

In the following table, the Counts columns list the number of bonds (or angles) for which Mogul statistics could be retrieved, the number of bonds (or angles) that are observed in the model and the number of bonds (or angles) that are defined in the Chemical Component Dictionary. The Link column lists molecule types, if any, to which the group is linked. The Z score for a bond length (or angle) is the number of standard deviations the observed value is removed from the expected value. A bond length (or angle) with $|Z| > 2$ is considered an outlier worth inspection. RMSZ is the root-mean-square of all Z scores of the bond lengths (or angles).

Mol	Type	Chain	Res	Link	Bond lengths			Bond angles		
					Counts	RMSZ	$\# Z > 2$	Counts	RMSZ	$\# Z > 2$
4	NAG	A	803	1	14,14,15	0.50	0	17,19,21	1.62	2 (11%)
4	NAG	A	801	1	14,14,15	0.61	0	17,19,21	2.37	5 (29%)
8	QUS	A	808	-	9,13,13	1.34	2 (22%)	10,18,18	4.25	7 (70%)
4	NAG	A	802	1	14,14,15	0.42	0	17,19,21	1.74	2 (11%)

In the following table, the Chirals column lists the number of chiral outliers, the number of chiral centers analysed, the number of these observed in the model and the number defined in the Chemical Component Dictionary. Similar counts are reported in the Torsion and Rings columns. '-' means no outliers of that kind were identified.

Mol	Type	Chain	Res	Link	Chirals	Torsions	Rings
4	NAG	A	803	1	-	2/6/23/26	0/1/1/1
4	NAG	A	801	1	-	4/6/23/26	0/1/1/1
8	QUS	A	808	-	-	1/6/8/8	0/1/1/1
4	NAG	A	802	1	-	3/6/23/26	0/1/1/1

All (2) bond length outliers are listed below:

Mol	Chain	Res	Type	Atoms	Z	Observed(Å)	Ideal(Å)
8	A	808	QUS	C03-C02	-2.20	1.50	1.53
8	A	808	QUS	C05-N15	-2.04	1.33	1.36

The worst 5 of 16 bond angle outliers are listed below:

Mol	Chain	Res	Type	Atoms	Z	Observed(°)	Ideal(°)
4	A	801	NAG	C1-O5-C5	7.51	122.25	112.19
8	A	808	QUS	O18-C04-N14	-6.69	117.59	126.37
8	A	808	QUS	O20-C05-O19	-6.12	117.63	122.95
8	A	808	QUS	O20-C05-N15	5.76	111.33	106.14
4	A	802	NAG	C1-O5-C5	5.72	119.86	112.19

There are no chirality outliers.

5 of 10 torsion outliers are listed below:

Mol	Chain	Res	Type	Atoms
4	A	801	NAG	C4-C5-C6-O6
4	A	801	NAG	O5-C5-C6-O6
4	A	803	NAG	C4-C5-C6-O6
4	A	802	NAG	O5-C5-C6-O6
4	A	803	NAG	O5-C5-C6-O6

There are no ring outliers.

1 monomer is involved in 2 short contacts:

Mol	Chain	Res	Type	Clashes	Symm-Clashes
4	A	803	NAG	2	0

5.7 Other polymers [\(i\)](#)

There are no such residues in this entry.

5.8 Polymer linkage issues

There are no chain breaks in this entry.

6 Fit of model and data [i](#)

6.1 Protein, DNA and RNA chains [i](#)

In the following table, the column labelled '#RSRZ > 2' contains the number (and percentage) of RSRZ outliers, followed by percent RSRZ outliers for the chain as percentile scores relative to all X-ray entries and entries of similar resolution. The OWAB column contains the minimum, median, 95th percentile and maximum values of the occupancy-weighted average B-factor per residue. The column labelled 'Q < 0.9' lists the number of (and percentage) of residues with an average occupancy less than 0.9.

Mol	Chain	Analysed	<RSRZ>	#RSRZ>2	OWAB(Å ²)	Q<0.9
1	A	689/709 (97%)	0.15	27 (3%) 43 47	7, 22, 41, 55	48 (6%)

The worst 5 of 27 RSRZ outliers are listed below:

Mol	Chain	Res	Type	RSRZ
1	A	287	VAL	5.7
1	A	288	GLY	4.5
1	A	544	ASN	4.0
1	A	656[A]	SER	3.9
1	A	506	PHE	3.9

6.2 Non-standard residues in protein, DNA, RNA chains [i](#)

There are no non-standard protein/DNA/RNA residues in this entry.

6.3 Carbohydrates [i](#)

In the following table, the Atoms column lists the number of modelled atoms in the group and the number defined in the chemical component dictionary. The B-factors column lists the minimum, median, 95th percentile and maximum values of B factors of atoms in the group. The column labelled 'Q < 0.9' lists the number of atoms with occupancy less than 0.9.

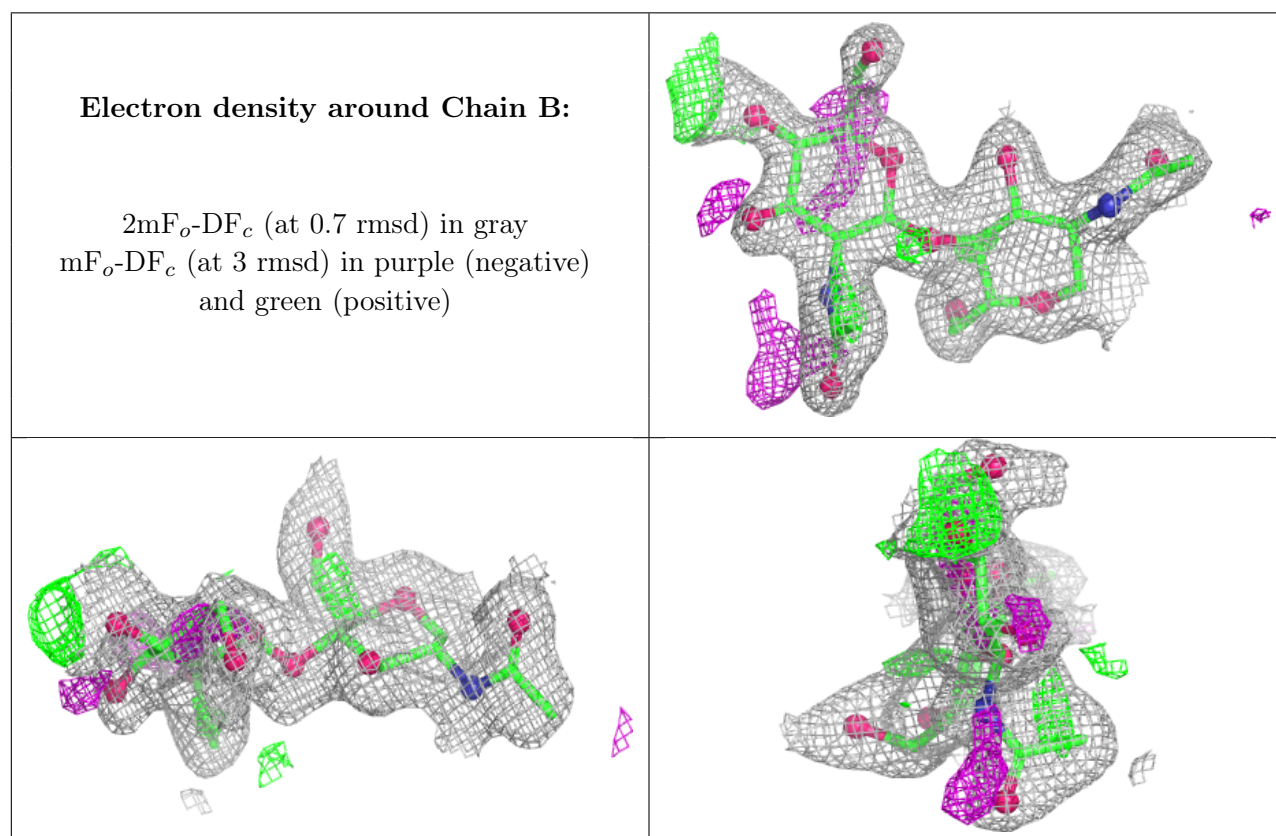
Mol	Type	Chain	Res	Atoms	RSCC	RSR	B-factors(Å ²)	Q<0.9
2	NAG	B	2	14/15	0.72	0.17	40,45,51,52	0
2	NAG	C	2	14/15	0.73	0.15	50,55,59,60	0
3	MAN	E	4	11/12	0.84	0.12	43,45,49,51	0
2	NAG	D	2	14/15	0.85	0.12	29,36,41,45	0
2	NAG	C	1	14/15	0.86	0.12	36,39,44,46	0
3	NAG	E	2	14/15	0.87	0.12	32,36,42,46	0
3	BMA	E	3	11/12	0.88	0.10	34,38,41,42	0

Continued on next page...

Continued from previous page...

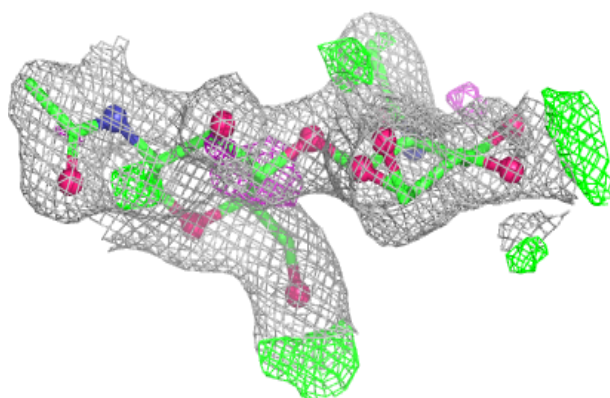
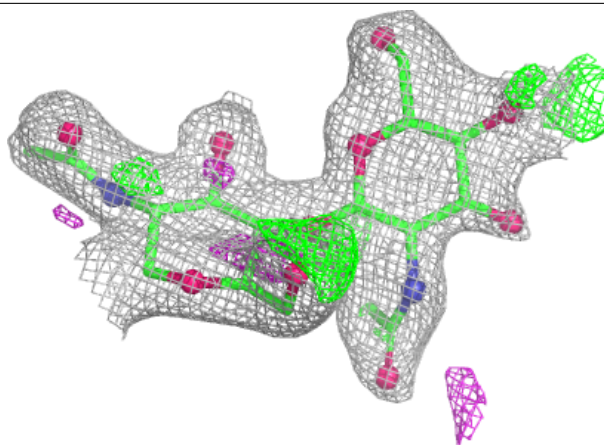
Mol	Type	Chain	Res	Atoms	RSCC	RSR	B-factors(\AA^2)	Q<0.9
2	NAG	D	1	14/15	0.89	0.10	25,28,33,39	0
2	NAG	B	1	14/15	0.91	0.10	31,36,42,44	0
3	NAG	E	1	14/15	0.94	0.08	20,23,29,39	0

The following is a graphical depiction of the model fit to experimental electron density for oligosaccharide. Each fit is shown from different orientation to approximate a three-dimensional view.

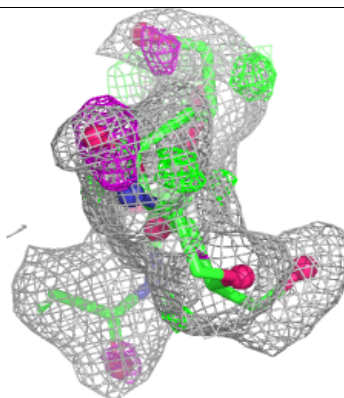
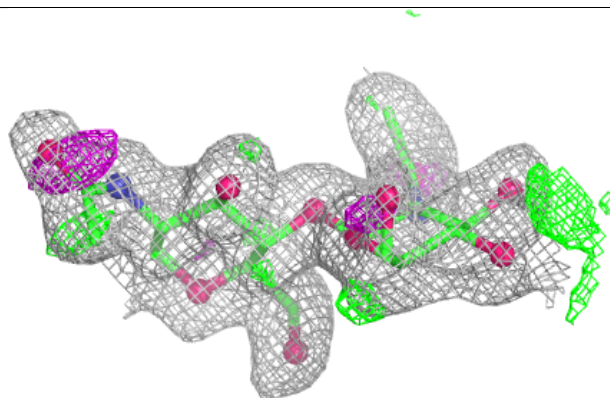
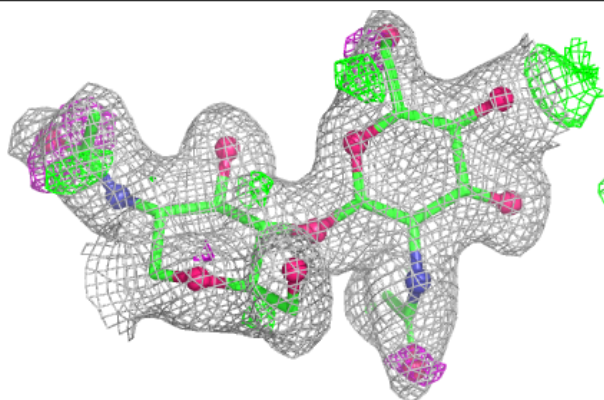


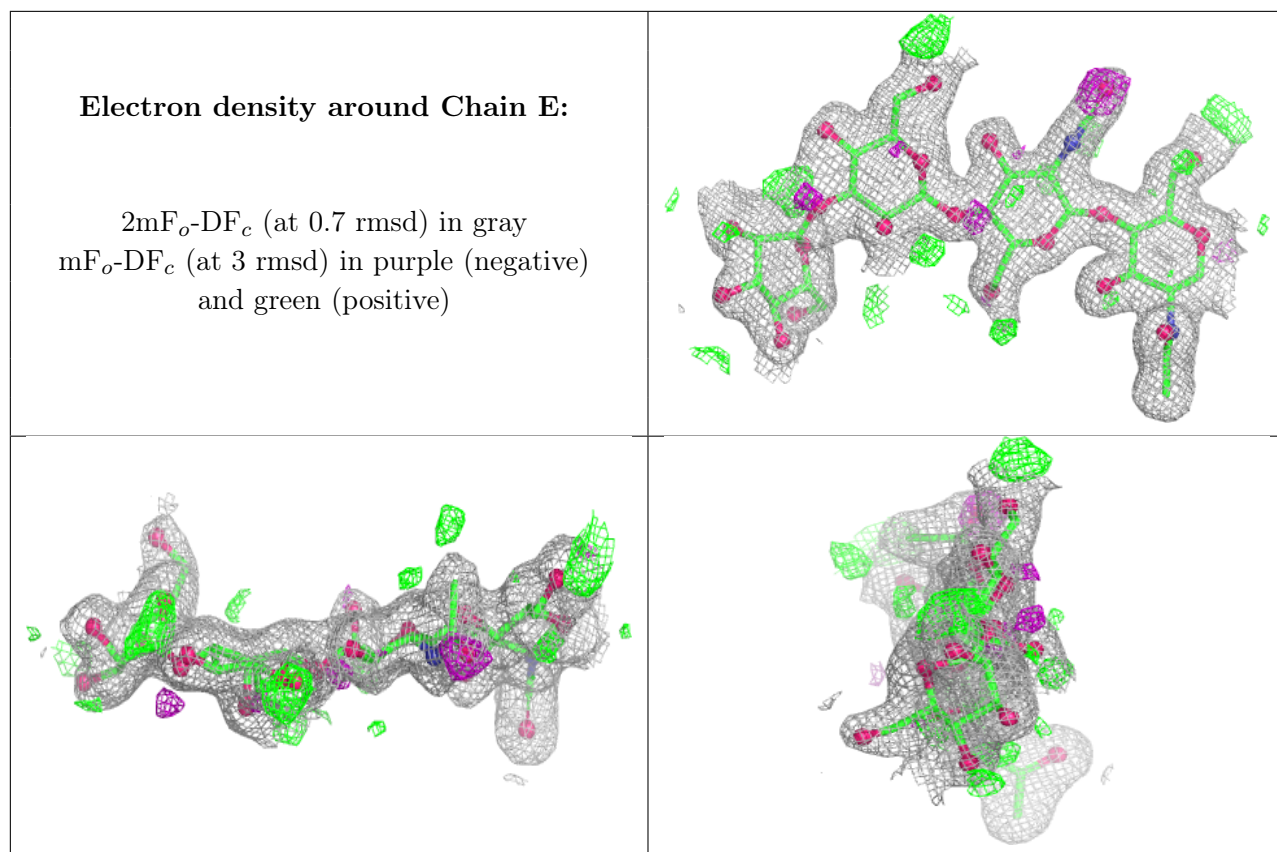
Electron density around Chain C:

$2mF_o-DF_c$ (at 0.7 rmsd) in gray
 mF_o-DF_c (at 3 rmsd) in purple (negative)
and green (positive)

**Electron density around Chain D:**

$2mF_o-DF_c$ (at 0.7 rmsd) in gray
 mF_o-DF_c (at 3 rmsd) in purple (negative)
and green (positive)





6.4 Ligands [i](#)

In the following table, the Atoms column lists the number of modelled atoms in the group and the number defined in the chemical component dictionary. The B-factors column lists the minimum, median, 95th percentile and maximum values of B factors of atoms in the group. The column labelled 'Q<0.9' lists the number of atoms with occupancy less than 0.9.

Mol	Type	Chain	Res	Atoms	RSCC	RSR	B-factors(Å ²)	Q<0.9
4	NAG	A	801	14/15	0.70	0.18	45,51,56,56	0
4	NAG	A	802	14/15	0.77	0.13	58,63,66,67	0
4	NAG	A	803	14/15	0.83	0.12	28,48,56,56	0
8	QUS	A	808	13/13	0.95	0.07	17,21,29,30	0
5	ZN	A	805	1/1	1.00	0.01	18,18,18,18	0
6	CA	A	806	1/1	1.00	0.01	15,15,15,15	0
7	CL	A	807	1/1	1.00	0.04	21,21,21,21	0
5	ZN	A	804	1/1	1.00	0.01	20,20,20,20	0

6.5 Other polymers [i](#)

There are no such residues in this entry.