



wwPDB X-ray Structure Validation Summary Report ⓘ

Mar 5, 2026 – 08:58 AM UTC

PDB ID : 7P2C / pdb_00007p2c
Title : F(M197)H mutant structure of Photosynthetic Reaction Center From Rhodobacter Sphaeroides strain RV by fixed-target serial synchrotron crystallography (room temperature, 26keV)
Authors : Gabdulkhakov, A.G.; Selikhanov, G.K.; Guenther, S.; Meents, A.; Fufina, T.Y.; Vasilieva, L.G.
Deposited on : 2021-07-05
Resolution : 2.04 Å(reported)

This is a wwPDB X-ray Structure Validation Summary Report for a publicly released PDB entry.

We welcome your comments at validation@mail.wwpdb.org

A user guide is available at

<https://www.wwpdb.org/validation/2017/XrayValidationReportHelp>

with specific help available everywhere you see the ⓘ symbol.

The types of validation reports are described at

<http://www.wwpdb.org/validation/2017/FAQs#types>.

The following versions of software and data (see [references](#) ①) were used in the production of this report:

MolProbity : 4-5-2 with Phenix2.0
Mogul : 2022.3.0, CSD as543be (2022)
Xtrriage (Phenix) : 2.0
EDS : 3.0
Buster-report : wwPDB partial adaption of 1.1.7 (2018)
Percentile statistics : 20250101.v01 (using entries in the PDB archive January 1st 2025)
CCP4 : 9.0.010 (Gargrove)
Density-Fitness : 1.0.12
Ideal geometry (proteins) : Engh & Huber (2001)
Ideal geometry (DNA, RNA) : Parkinson et al. (1996)
Validation Pipeline (wwPDB-VP) : 2.49

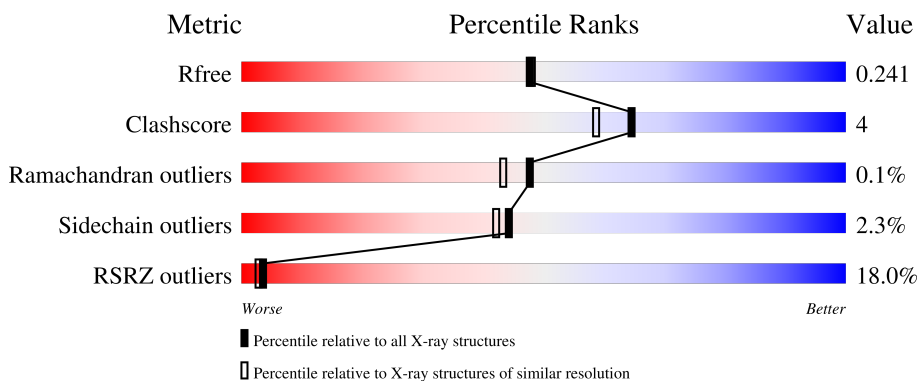
1 Overall quality at a glance

The following experimental techniques were used to determine the structure:

X-RAY DIFFRACTION


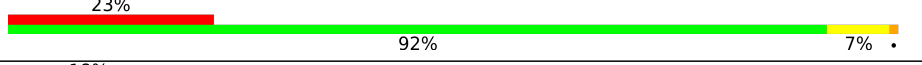

The reported resolution of this entry is 2.04 Å.

Percentile scores (ranging between 0-100) for global validation metrics of the entry are shown in the following graphic. The table shows the number of entries on which the scores are based.



Metric	Whole archive (#Entries)	Similar resolution (#Entries, resolution range(Å))
R_{free}	180053	2260 (2.04-2.04)
Clashscore	190562	2333 (2.04-2.04)
Ramachandran outliers	187476	2318 (2.04-2.04)
Sidechain outliers	187428	2318 (2.04-2.04)
RSRZ outliers	180081	2260 (2.04-2.04)

The table below summarises the geometric issues observed across the polymeric chains and their fit to the electron density. The red, orange, yellow and green segments of the lower bar indicate the fraction of residues that contain outliers for ≥ 3 , 2, 1 and 0 types of geometric quality criteria respectively. A grey segment represents the fraction of residues that are not modelled. The numeric value for each fraction is indicated below the corresponding segment, with a dot representing fractions $\leq 5\%$. The upper red bar (where present) indicates the fraction of residues that have poor fit to the electron density. The numeric value is given above the bar.

Mol	Chain	Length	Quality of chain
1	H	242	
2	L	281	
3	M	303	

2 Entry composition

There are 15 unique types of molecules in this entry. The entry contains 7591 atoms, of which 0 are hydrogens and 0 are deuteriums.

In the tables below, the ZeroOcc column contains the number of atoms modelled with zero occupancy, the AltConf column contains the number of residues with at least one atom in alternate conformation and the Trace column contains the number of residues modelled with at most 2 atoms.

- Molecule 1 is a protein called Reaction center protein H chain.

Mol	Chain	Residues	Atoms					ZeroOcc	AltConf	Trace
			Total	C	N	O	S			
1	H	239	1862	1191	317	344	10	0	5	0

- Molecule 2 is a protein called Reaction center protein L chain.

Mol	Chain	Residues	Atoms					ZeroOcc	AltConf	Trace
			Total	C	N	O	S			
2	L	281	2430	1645	387	390	8	0	22	0

There is a discrepancy between the modelled and reference sequences:

Chain	Residue	Modelled	Actual	Comment	Reference
L	178	THR	SER	engineered mutation	UNP Q3J1A5

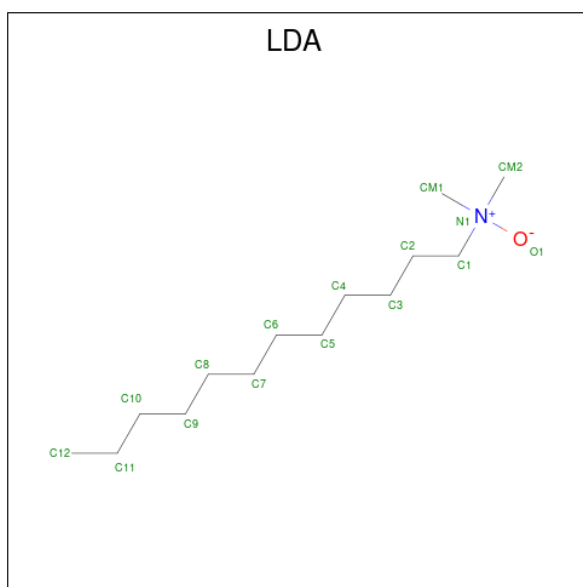
- Molecule 3 is a protein called Reaction center protein M chain.

Mol	Chain	Residues	Atoms					ZeroOcc	AltConf	Trace
			Total	C	N	O	S			
3	M	302	2455	1636	405	403	11	0	6	0

There are 2 discrepancies between the modelled and reference sequences:

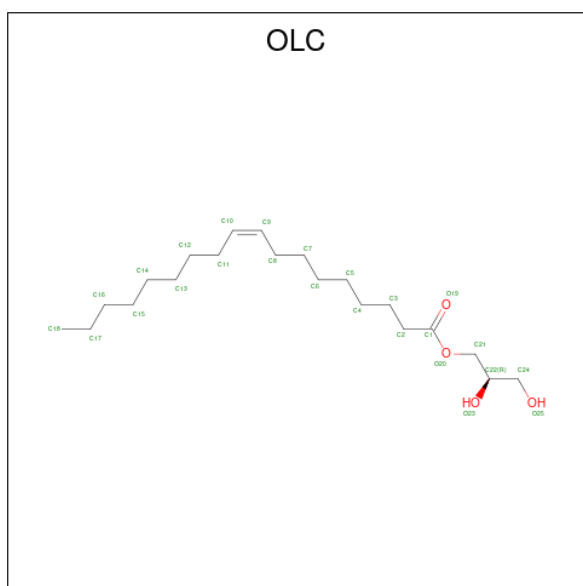
Chain	Residue	Modelled	Actual	Comment	Reference
M	8	THR	SER	engineered mutation	UNP Q3J1A6
M	197	HIS	PHE	engineered mutation	UNP Q3J1A6

- Molecule 4 is LAURYL DIMETHYLAMINE-N-OXIDE (CCD ID: LDA) (formula: C₁₄H₃₁NO).



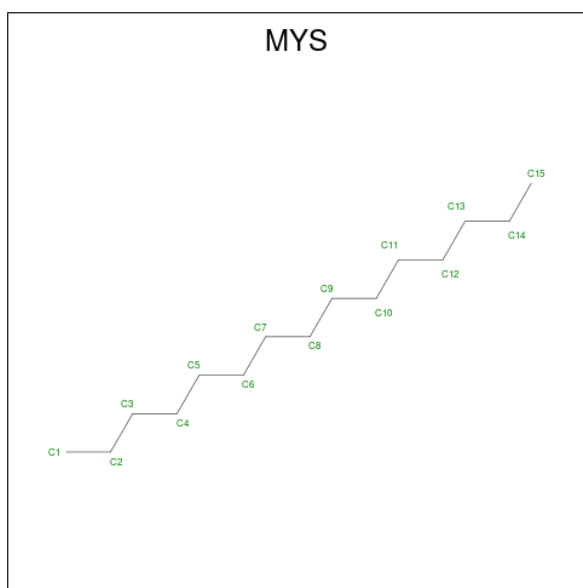
Mol	Chain	Residues	Atoms			ZeroOcc	AltConf	
4	H	1	Total	C	N	O	0	0
			16	14	1	1		
4	M	1	Total	C	N	O	0	0
			16	14	1	1		

- Molecule 5 is (2R)-2,3-dihydroxypropyl (9Z)-octadec-9-enoate (CCD ID: OLC) (formula: $C_{21}H_{40}O_4$).



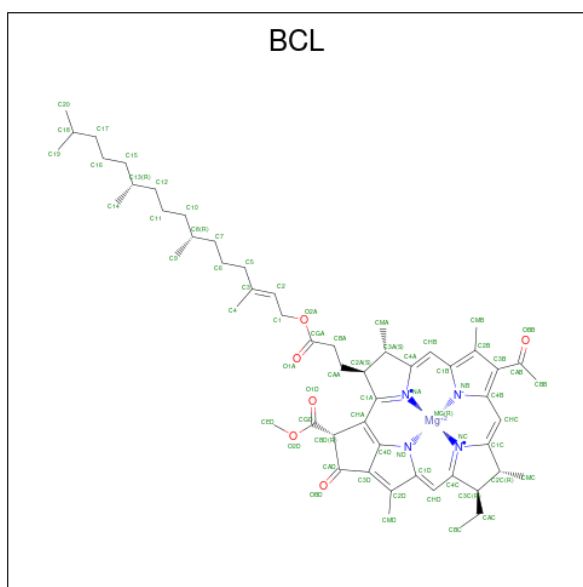
Mol	Chain	Residues	Atoms			ZeroOcc	AltConf	
5	L	1	Total	C	O		0	0
			25	21	4			

- Molecule 6 is PENTADECANE (CCD ID: MYS) (formula: $C_{15}H_{32}$).



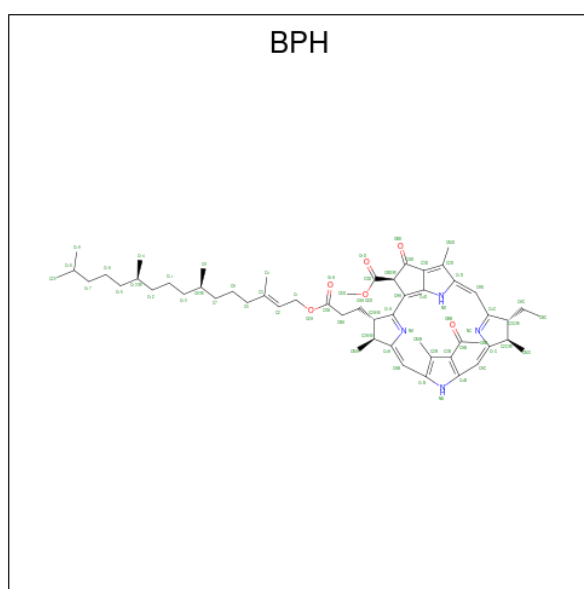
Mol	Chain	Residues	Atoms	ZeroOcc	AltConf
6	L	1	Total C 15 15	0	0
6	L	1	Total C 15 15	0	0
6	M	1	Total C 15 15	0	0

- Molecule 7 is BACTERIOCHLOROPHYLL A (CCD ID: BCL) (formula: $C_{55}H_{74}MgN_4O_6$) (labeled as "Ligand of Interest" by depositor).



Mol	Chain	Residues	Atoms				ZeroOcc	AltConf	
7	L	1	Total	C	Mg	N	O	0	0
			66	55	1	4	6		
7	L	1	Total	C	Mg	N	O	0	0
			66	55	1	4	6		
7	M	1	Total	C	Mg	N	O	0	0
			66	55	1	4	6		
7	M	1	Total	C	Mg	N	O	0	0
			66	55	1	4	6		

- Molecule 8 is BACTERIOPHEOPHYTIN A (CCD ID: BPH) (formula: $C_{55}H_{76}N_4O_6$) (labeled as "Ligand of Interest" by depositor).

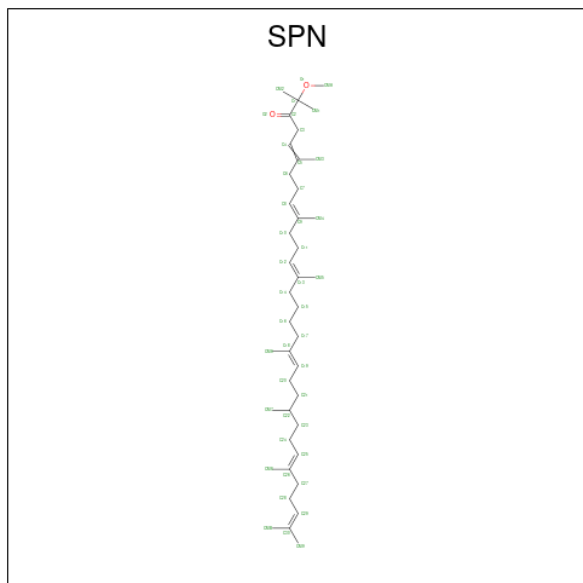


Mol	Chain	Residues	Atoms				ZeroOcc	AltConf
8	L	1	Total	C	N	O	0	0
			65	55	4	6		
8	M	1	Total	C	N	O	0	0
			65	55	4	6		

- Molecule 9 is (2R)-2-hydroxy-3-(phosphonoxy)propyl (9E)-octadec-9-enoate (CCD ID: NKP) (formula: $C_{21}H_{41}O_7P$).

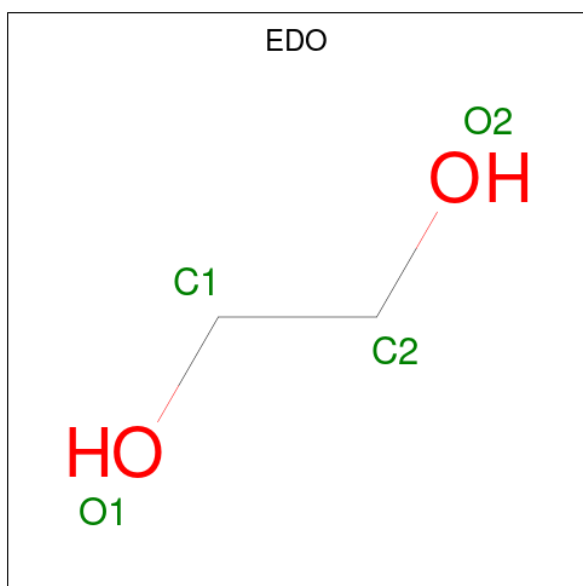
Mol	Chain	Residues	Atoms	ZeroOcc	AltConf
11	M	1	Total Fe 1 1	0	0

- Molecule 12 is SPEROIDENONE (CCD ID: SPN) (formula: $C_{41}H_{70}O_2$).



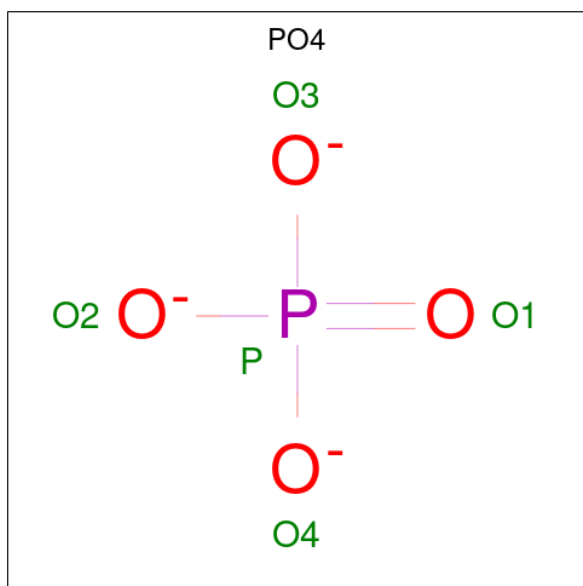
Mol	Chain	Residues	Atoms	ZeroOcc	AltConf
12	M	1	Total C O 43 41 2	0	0

- Molecule 13 is 1,2-ETHANEDIOL (CCD ID: EDO) (formula: $C_2H_6O_2$).



Mol	Chain	Residues	Atoms	ZeroOcc	AltConf
13	M	1	Total C O 4 2 2	0	0

- Molecule 14 is PHOSPHATE ION (CCD ID: PO4) (formula: O₄P).



Mol	Chain	Residues	Atoms	ZeroOcc	AltConf
14	M	1	Total O P 5 4 1	0	0

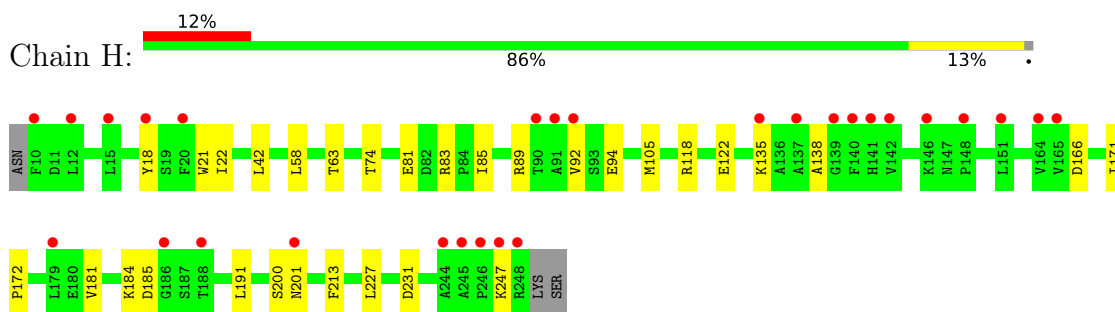
- Molecule 15 is water.

Mol	Chain	Residues	Atoms	ZeroOcc	AltConf
15	H	78	Total O 78 78	0	0
15	L	53	Total O 53 53	0	0
15	M	43	Total O 43 43	0	0

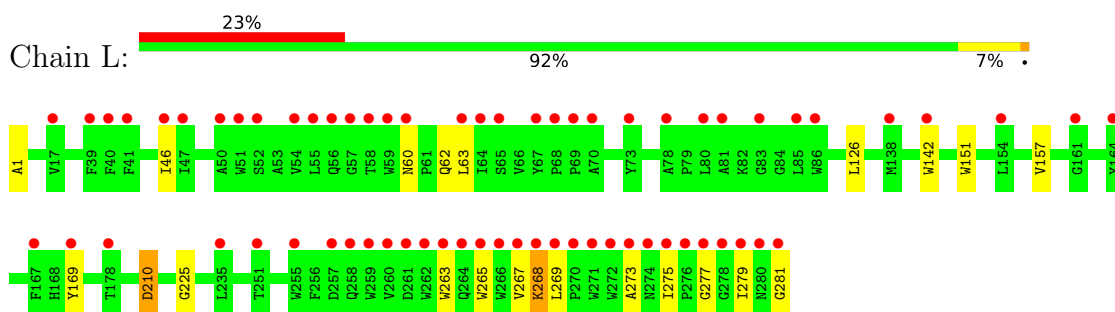
3 Residue-property plots [i](#)

These plots are drawn for all protein, RNA, DNA and oligosaccharide chains in the entry. The first graphic for a chain summarises the proportions of the various outlier classes displayed in the second graphic. The second graphic shows the sequence view annotated by issues in geometry and electron density. Residues are color-coded according to the number of geometric quality criteria for which they contain at least one outlier: green = 0, yellow = 1, orange = 2 and red = 3 or more. A red dot above a residue indicates a poor fit to the electron density ($RSRZ > 2$). Stretches of 2 or more consecutive residues without any outlier are shown as a green connector. Residues present in the sample, but not in the model, are shown in grey.

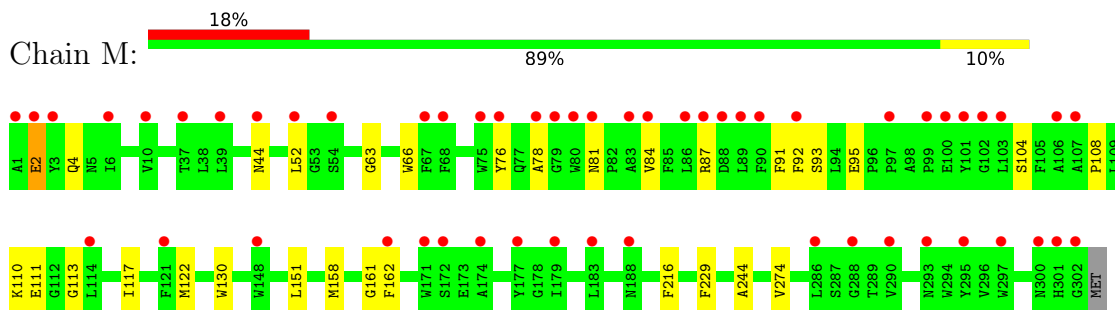
- Molecule 1: Reaction center protein H chain



- Molecule 2: Reaction center protein L chain



- Molecule 3: Reaction center protein M chain



4 Data and refinement statistics

Property	Value	Source
Space group	P 42 21 2	Depositor
Cell constants a, b, c, α , β , γ	102.50Å 102.50Å 237.40Å 90.00° 90.00° 90.00°	Depositor
Resolution (Å)	47.05 – 2.04 47.05 – 2.04	Depositor EDS
% Data completeness (in resolution range)	99.9 (47.05-2.04) 99.9 (47.05-2.04)	Depositor EDS
R_{merge}	0.31	Depositor
R_{sym}	(Not available)	Depositor
$\langle I/\sigma(I) \rangle$ ¹	1.29 (at 2.05Å)	Xtrriage
Refinement program	REFMAC 5.8.0258, PHENIX 1.19.2_4158	Depositor
R, R_{free}	0.201 , 0.229 0.211 , 0.241	Depositor DCC
R_{free} test set	4082 reflections (3.22%)	wwPDB-VP
Wilson B-factor (Å ²)	35.3	Xtrriage
Anisotropy	0.004	Xtrriage
Bulk solvent k_{sol} (e/Å ³), B_{sol} (Å ²)	0.38 , 74.8	EDS
L-test for twinning ²	$\langle L \rangle = 0.50$, $\langle L^2 \rangle = 0.34$	Xtrriage
Estimated twinning fraction	No twinning to report.	Xtrriage
F_o, F_c correlation	0.94	EDS
Total number of atoms	7591	wwPDB-VP
Average B, all atoms (Å ²)	42.0	wwPDB-VP

Xtrriage's analysis on translational NCS is as follows: *The largest off-origin peak in the Patterson function is 2.95% of the height of the origin peak. No significant pseudotranslation is detected.*

¹Intensities estimated from amplitudes.

²Theoretical values of $\langle |L| \rangle$, $\langle L^2 \rangle$ for acentric reflections are 0.5, 0.333 respectively for untwinned datasets, and 0.375, 0.2 for perfectly twinned datasets.

5 Model quality [i](#)

5.1 Standard geometry [i](#)

Bond lengths and bond angles in the following residue types are not validated in this section: MYS, FE, SPN, U10, EDO, BCL, LDA, OLC, NKP, PO4, BPH

The Z score for a bond length (or angle) is the number of standard deviations the observed value is removed from the expected value. A bond length (or angle) with $|Z| > 5$ is considered an outlier worth inspection. RMSZ is the root-mean-square of all Z scores of the bond lengths (or angles).

Mol	Chain	Bond lengths		Bond angles	
		RMSZ	# Z >5	RMSZ	# Z >5
1	H	0.32	0/1911	0.48	0/2601
2	L	0.29	0/2531	0.44	0/3468
3	M	0.32	0/2547	0.48	0/3476
All	All	0.31	0/6989	0.47	0/9545

There are no bond length outliers.

There are no bond angle outliers.

There are no chirality outliers.

There are no planarity outliers.

5.2 Too-close contacts [i](#)

In the following table, the Non-H and H(model) columns list the number of non-hydrogen atoms and hydrogen atoms in the chain respectively. The H(added) column lists the number of hydrogen atoms added and optimized by MolProbity. The Clashes column lists the number of clashes within the asymmetric unit, whereas Symm-Clashes lists symmetry-related clashes.

Mol	Chain	Non-H	H(model)	H(added)	Clashes	Symm-Clashes
1	H	1862	0	1859	17	0
2	L	2430	0	2366	15	0
3	M	2455	0	2374	19	0
4	H	16	0	31	2	0
4	M	16	0	31	2	0
5	L	25	0	40	1	0
6	L	30	0	64	1	0
6	M	15	0	32	0	0
7	L	132	0	148	2	0
7	M	132	0	148	5	0

Continued on next page...

Continued from previous page...

Mol	Chain	Non-H	H(model)	H(added)	Clashes	Symm-Clashes
8	L	65	0	76	0	0
8	M	65	0	76	4	0
9	M	58	0	78	0	0
10	M	63	0	90	2	0
11	M	1	0	0	0	0
12	M	43	0	70	4	0
13	M	4	0	6	0	0
14	M	5	0	0	0	0
15	H	78	0	0	2	0
15	L	53	0	0	0	0
15	M	43	0	0	0	0
All	All	7591	0	7489	58	0

The all-atom clashscore is defined as the number of clashes found per 1000 atoms (including hydrogen atoms). The all-atom clashscore for this structure is 4.

The worst 5 of 58 close contacts within the same asymmetric unit are listed below, sorted by their clash magnitude.

Atom-1	Atom-2	Interatomic distance (Å)	Clash overlap (Å)
7:M:405:BCL:H203	8:M:406:BPH:H8	1.69	0.74
3:M:108:PRO:HG2	3:M:111:GLU:HB2	1.76	0.67
1:H:135:LYS:HG2	1:H:166:ASP:OD2	1.98	0.64
1:H:247:LYS:NZ	15:H:402:HOH:O	2.33	0.61
1:H:18:TYR:O	1:H:22:ILE:HD12	2.03	0.58

There are no symmetry-related clashes.

5.3 Torsion angles [i](#)

5.3.1 Protein backbone [i](#)

In the following table, the Percentiles column shows the percent Ramachandran outliers of the chain as a percentile score with respect to all X-ray entries followed by that with respect to entries of similar resolution.

The Analysed column shows the number of residues for which the backbone conformation was analysed, and the total number of residues.

Mol	Chain	Analysed	Favoured	Allowed	Outliers	Percentiles
1	H	242/242 (100%)	238 (98%)	3 (1%)	1 (0%)	30 22

Continued on next page...

Continued from previous page...

Mol	Chain	Analysed	Favoured	Allowed	Outliers	Percentiles	
2	L	300/281 (107%)	287 (96%)	13 (4%)	0	100	100
3	M	306/303 (101%)	296 (97%)	10 (3%)	0	100	100
All	All	848/826 (103%)	821 (97%)	26 (3%)	1 (0%)	48	43

All (1) Ramachandran outliers are listed below:

Mol	Chain	Res	Type
1	H	138	ALA

5.3.2 Protein sidechains [i](#)

In the following table, the Percentiles column shows the percent sidechain outliers of the chain as a percentile score with respect to all X-ray entries followed by that with respect to entries of similar resolution.

The Analysed column shows the number of residues for which the sidechain conformation was analysed, and the total number of residues.

Mol	Chain	Analysed	Rotameric	Outliers	Percentiles	
1	H	199/197 (101%)	195 (98%)	4 (2%)	48	48
2	L	238/220 (108%)	228 (96%)	10 (4%)	26	20
3	M	241/237 (102%)	235 (98%)	6 (2%)	42	39
All	All	678/654 (104%)	658 (97%)	20 (3%)	44	33

5 of 20 residues with a non-rotameric sidechain are listed below:

Mol	Chain	Res	Type
3	M	2	GLU
3	M	104	SER
3	M	274	VAL
3	M	216	PHE
2	L	265[A]	TRP

Sometimes sidechains can be flipped to improve hydrogen bonding and reduce clashes. All (4) such sidechains are listed below:

Mol	Chain	Res	Type
1	H	44	ASN
1	H	126	HIS
3	M	44	ASN

Continued on next page...

Continued from previous page...

Mol	Chain	Res	Type
3	M	193	HIS

5.3.3 RNA [i](#)

There are no RNA molecules in this entry.

5.4 Non-standard residues in protein, DNA, RNA chains [i](#)

There are no non-standard protein/DNA/RNA residues in this entry.

5.5 Carbohydrates [i](#)

There are no oligosaccharides in this entry.

5.6 Ligand geometry [i](#)

Of 19 ligands modelled in this entry, 1 is monoatomic - leaving 18 for Mogul analysis.

In the following table, the Counts columns list the number of bonds (or angles) for which Mogul statistics could be retrieved, the number of bonds (or angles) that are observed in the model and the number of bonds (or angles) that are defined in the Chemical Component Dictionary. The Link column lists molecule types, if any, to which the group is linked. The Z score for a bond length (or angle) is the number of standard deviations the observed value is removed from the expected value. A bond length (or angle) with $|Z| > 2$ is considered an outlier worth inspection. RMSZ is the root-mean-square of all Z scores of the bond lengths (or angles).

Mol	Type	Chain	Res	Link	Bond lengths			Bond angles		
					Counts	RMSZ	# Z > 2	Counts	RMSZ	# Z > 2
7	BCL	M	405	-	69,74,74	1.28	7 (10%)	79,115,115	1.42	8 (10%)
5	OLC	L	301	-	24,24,24	0.95	1 (4%)	25,25,25	0.90	2 (8%)
7	BCL	L	304	-	69,74,74	1.32	5 (7%)	79,115,115	1.37	8 (10%)
9	NKP	M	401	-	28,28,28	0.34	0	30,32,32	0.64	1 (3%)
6	MYS	M	410	-	14,14,14	0.25	0	13,13,13	0.62	0
7	BCL	L	305	-	69,74,74	1.21	5 (7%)	79,115,115	1.36	7 (8%)
10	U10	M	402	-	63,63,63	2.73	17 (26%)	78,79,79	1.73	21 (26%)
6	MYS	L	302	-	14,14,14	0.26	0	13,13,13	0.55	0
9	NKP	M	403	-	28,28,28	0.54	0	30,32,32	0.47	0
14	PO4	M	412	-	4,4,4	0.97	0	6,6,6	0.37	0
4	LDA	M	409	-	13,15,15	2.29	2 (15%)	14,17,17	0.38	0

Mol	Type	Chain	Res	Link	Bond lengths			Bond angles		
					Counts	RMSZ	# Z > 2	Counts	RMSZ	# Z > 2
8	BPH	M	406	-	59,70,70	1.28	7 (11%)	59,101,101	2.15	10 (16%)
4	LDA	H	301	-	13,15,15	2.46	2 (15%)	14,17,17	0.61	0
7	BCL	M	404	-	69,74,74	1.12	4 (5%)	79,115,115	1.46	11 (13%)
12	SPN	M	408	-	42,42,42	0.57	0	50,52,52	1.41	10 (20%)
13	EDO	M	411	-	3,3,3	0.33	0	2,2,2	1.29	0
8	BPH	L	306	-	59,70,70	1.23	7 (11%)	59,101,101	2.07	12 (20%)
6	MYS	L	303	-	14,14,14	0.28	0	13,13,13	0.51	0

In the following table, the Chirals column lists the number of chiral outliers, the number of chiral centers analysed, the number of these observed in the model and the number defined in the Chemical Component Dictionary. Similar counts are reported in the Torsion and Rings columns. '-' means no outliers of that kind were identified.

Mol	Type	Chain	Res	Link	Chirals	Torsions	Rings
7	BCL	M	405	-	-	1/41/137/137	-
5	OLC	L	301	-	-	7/24/24/24	-
7	BCL	L	304	-	-	1/41/137/137	-
9	NKP	M	401	-	-	7/28/28/28	-
6	MYS	M	410	-	-	2/12/12/12	-
7	BCL	L	305	-	-	2/41/137/137	-
10	U10	M	402	-	-	12/63/87/87	0/1/1/1
6	MYS	L	302	-	-	3/12/12/12	-
9	NKP	M	403	-	-	10/28/28/28	-
4	LDA	M	409	-	-	3/13/13/13	-
8	BPH	M	406	-	-	3/37/105/105	0/5/6/6
4	LDA	H	301	-	-	5/13/13/13	-
7	BCL	M	404	-	-	0/41/137/137	-
12	SPN	M	408	-	-	17/50/51/51	-
13	EDO	M	411	-	-	1/1/1/1	-
8	BPH	L	306	-	-	3/37/105/105	0/5/6/6
6	MYS	L	303	-	-	6/12/12/12	-

The worst 5 of 57 bond length outliers are listed below:

Mol	Chain	Res	Type	Atoms	Z	Observed(Å)	Ideal(Å)
4	M	409	LDA	O1-N1	-6.70	1.25	1.42
10	M	402	U10	C33-C34	6.59	1.48	1.33
4	H	301	LDA	O1-N1	-6.59	1.26	1.42

Continued on next page...

Continued from previous page...

Mol	Chain	Res	Type	Atoms	Z	Observed(Å)	Ideal(Å)
10	M	402	U10	C48-C49	6.36	1.47	1.33
10	M	402	U10	C43-C44	6.29	1.47	1.33

The worst 5 of 90 bond angle outliers are listed below:

Mol	Chain	Res	Type	Atoms	Z	Observed(°)	Ideal(°)
8	M	406	BPH	C4D-CHA-CBD	-12.23	102.59	108.45
8	L	306	BPH	C4D-CHA-CBD	-10.47	103.43	108.45
7	L	305	BCL	C4D-CHA-C1A	5.81	128.18	121.24
7	M	405	BCL	C4D-CHA-C1A	5.71	128.05	121.24
7	M	404	BCL	C4D-CHA-C1A	4.89	127.08	121.24

There are no chirality outliers.

5 of 83 torsion outliers are listed below:

Mol	Chain	Res	Type	Atoms
5	L	301	OLC	O20-C21-C22-O23
7	L	305	BCL	CHA-CBD-CGD-O2D
10	M	402	U10	C32-C33-C34-C35
10	M	402	U10	C32-C33-C34-C36
12	M	408	SPN	CM2-C1-C2-O2

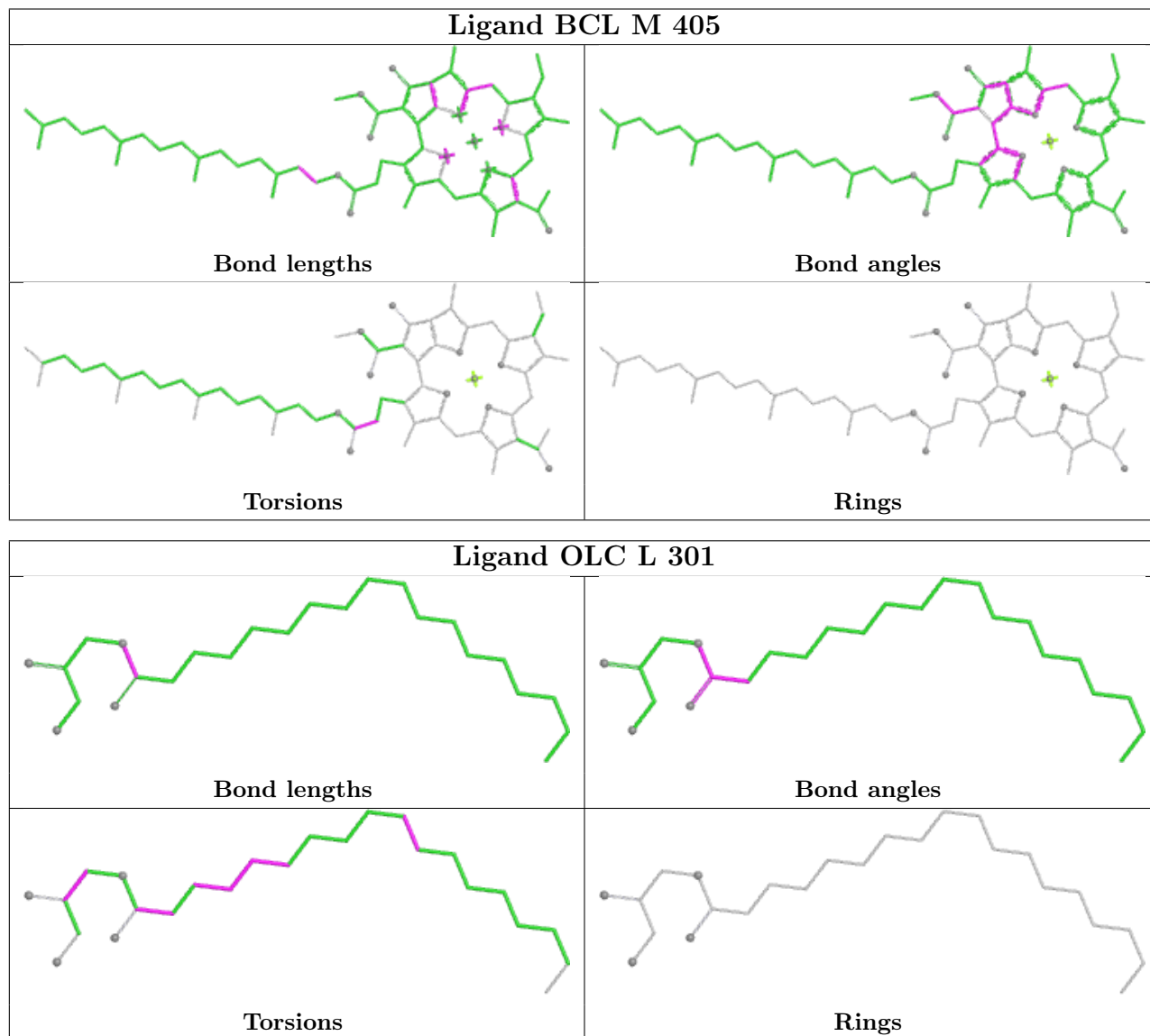
There are no ring outliers.

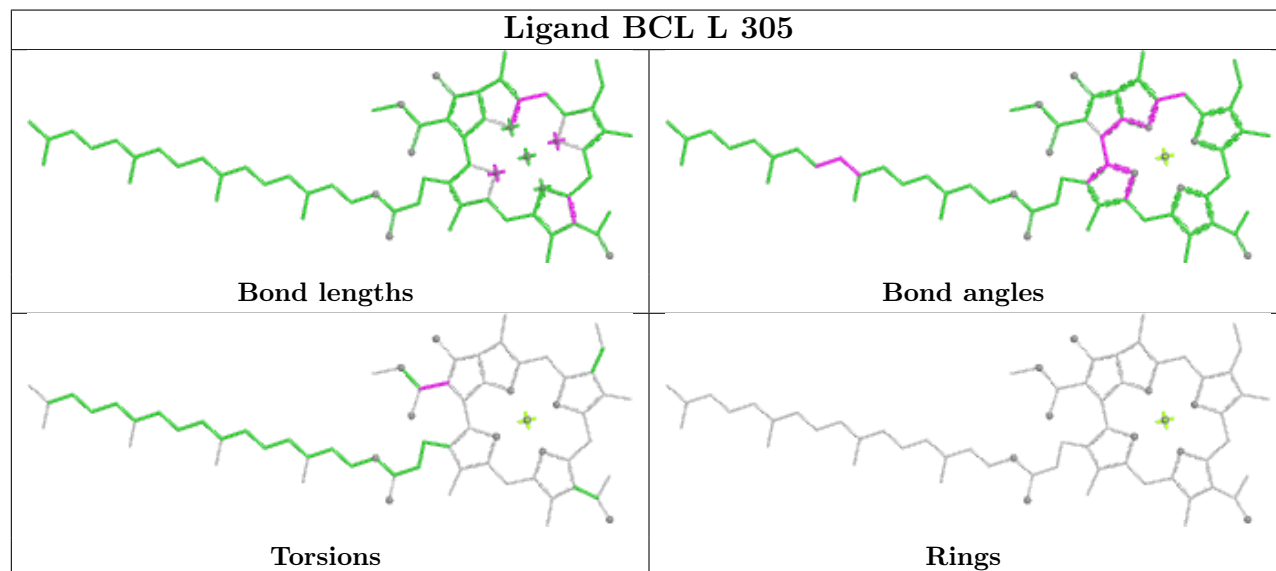
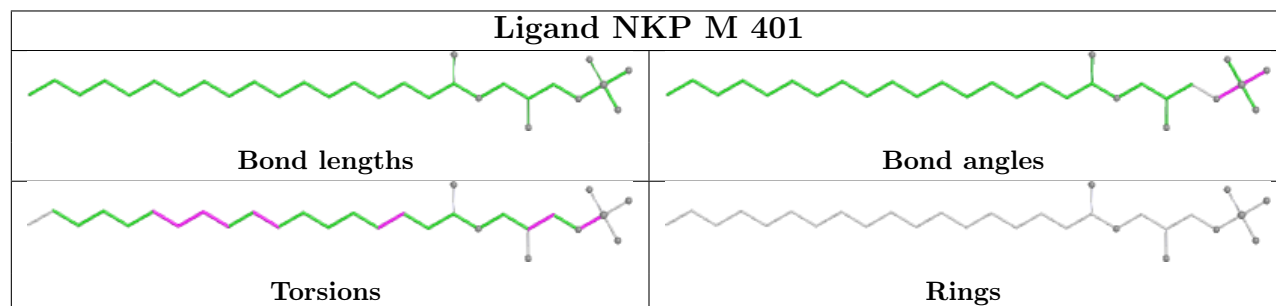
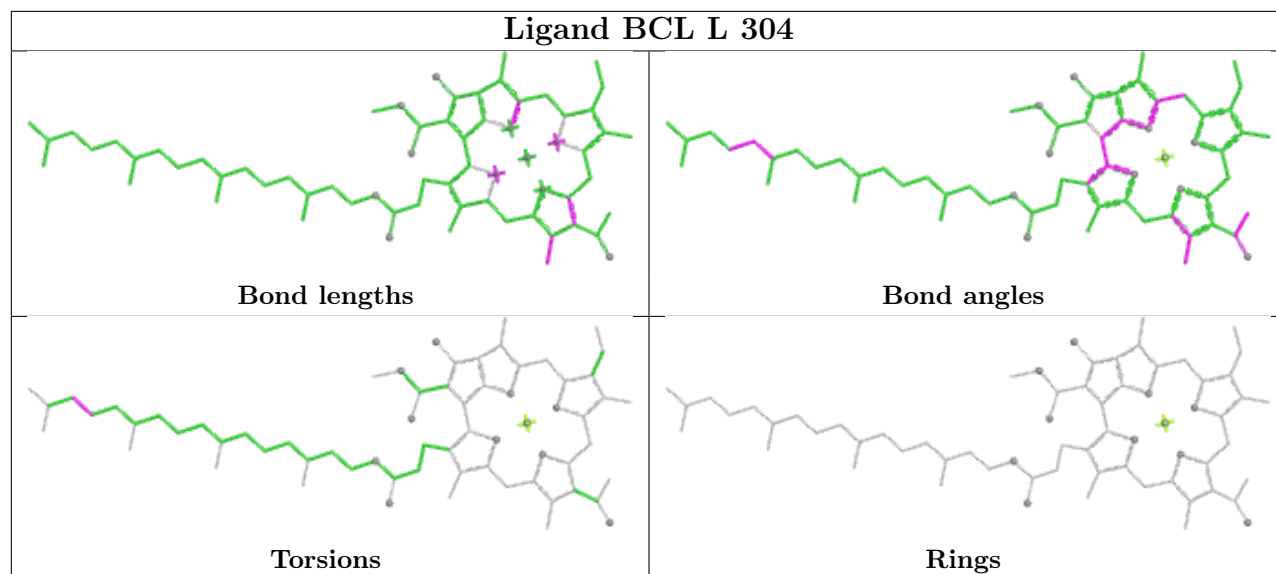
10 monomers are involved in 18 short contacts:

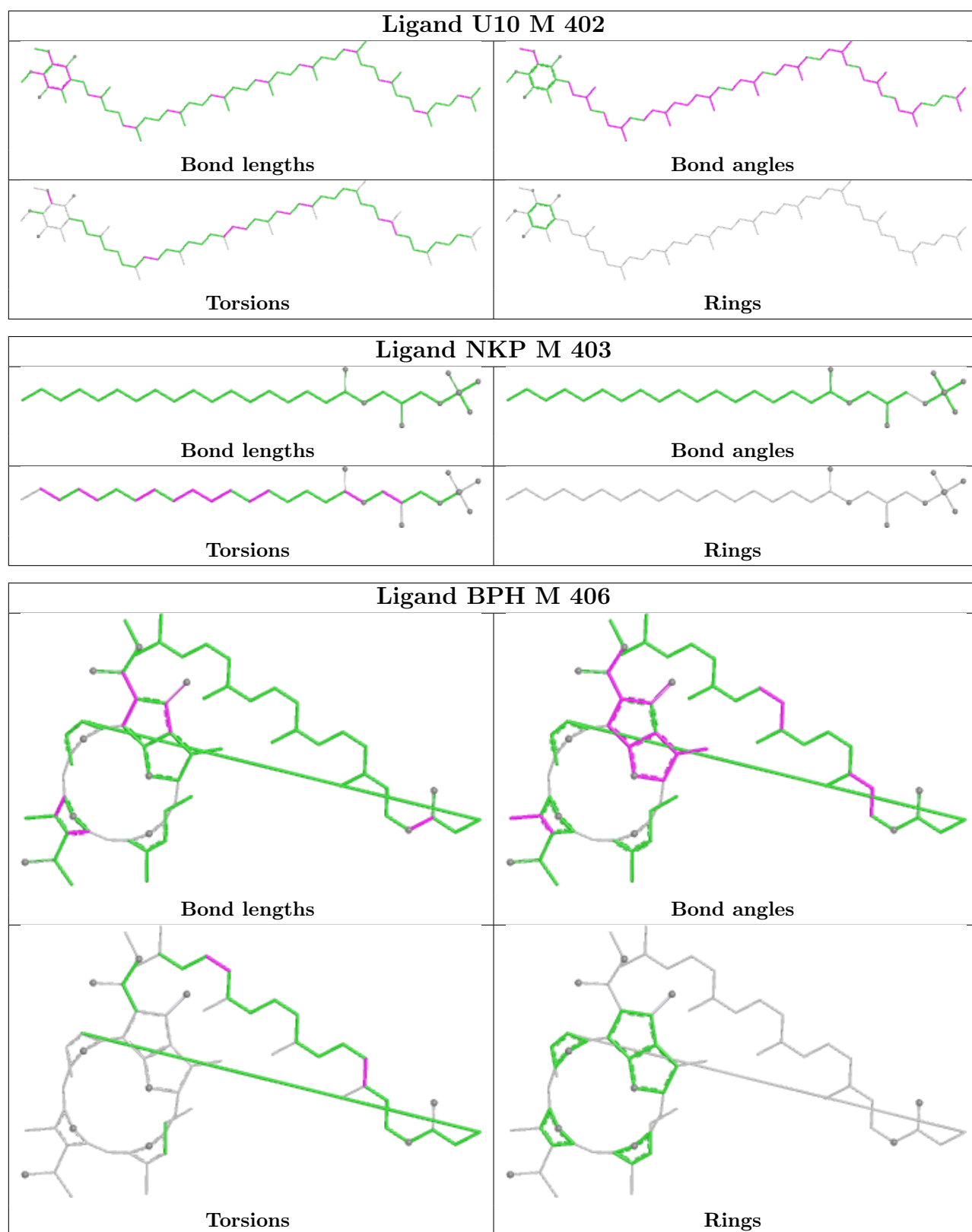
Mol	Chain	Res	Type	Clashes	Symm-Clashes
7	M	405	BCL	2	0
5	L	301	OLC	1	0
7	L	304	BCL	2	0
10	M	402	U10	2	0
6	L	302	MYS	1	0
4	M	409	LDA	2	0
8	M	406	BPH	4	0
4	H	301	LDA	2	0
7	M	404	BCL	3	0
12	M	408	SPN	4	0

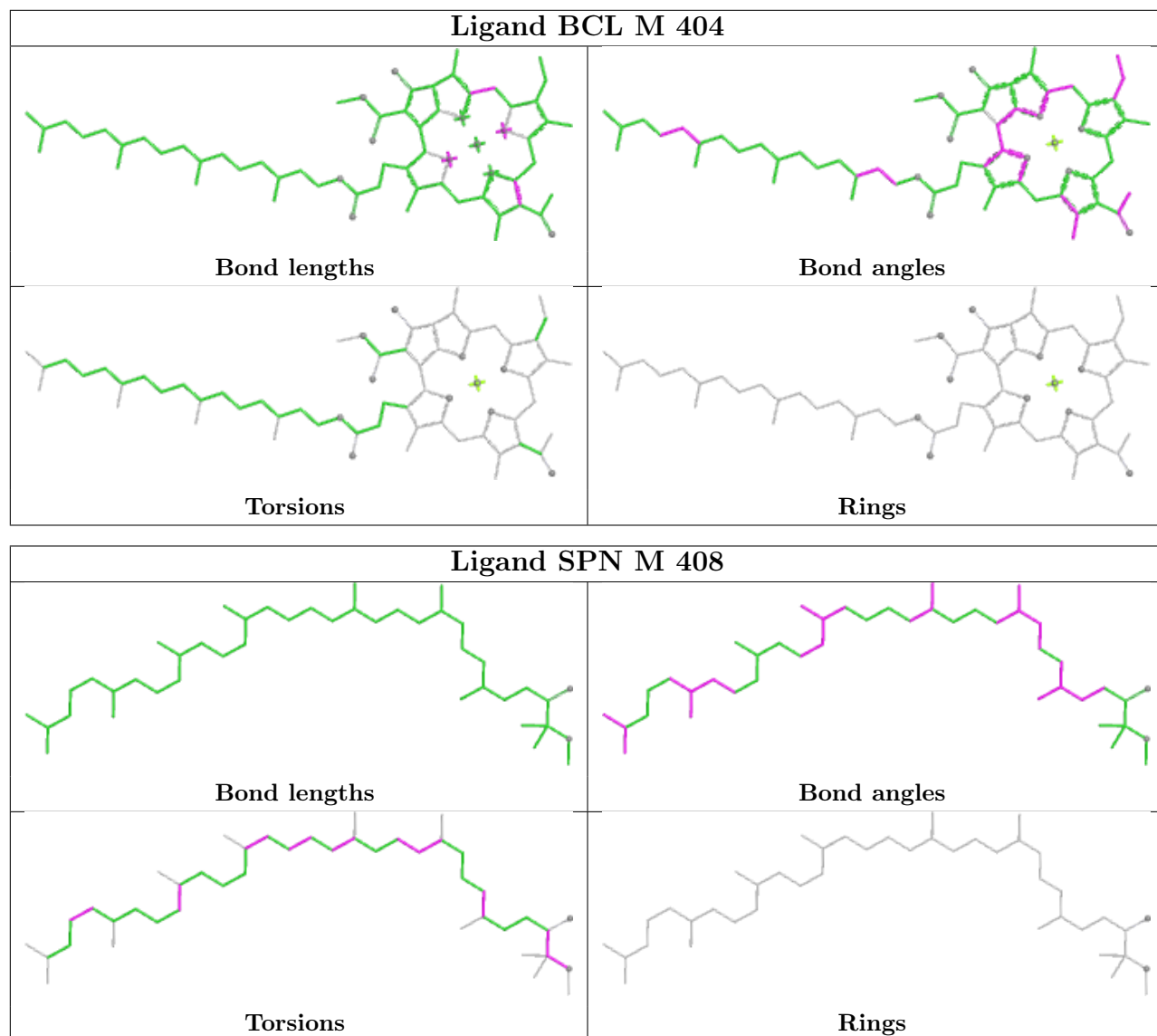
The following is a two-dimensional graphical depiction of Mogul quality analysis of bond lengths, bond angles, torsion angles, and ring geometry for all instances of the Ligand of Interest. In addition, ligands with molecular weight > 250 and outliers as shown on the validation Tables will also be included. For torsion angles, if less than 5% of the Mogul distribution of torsion angles is

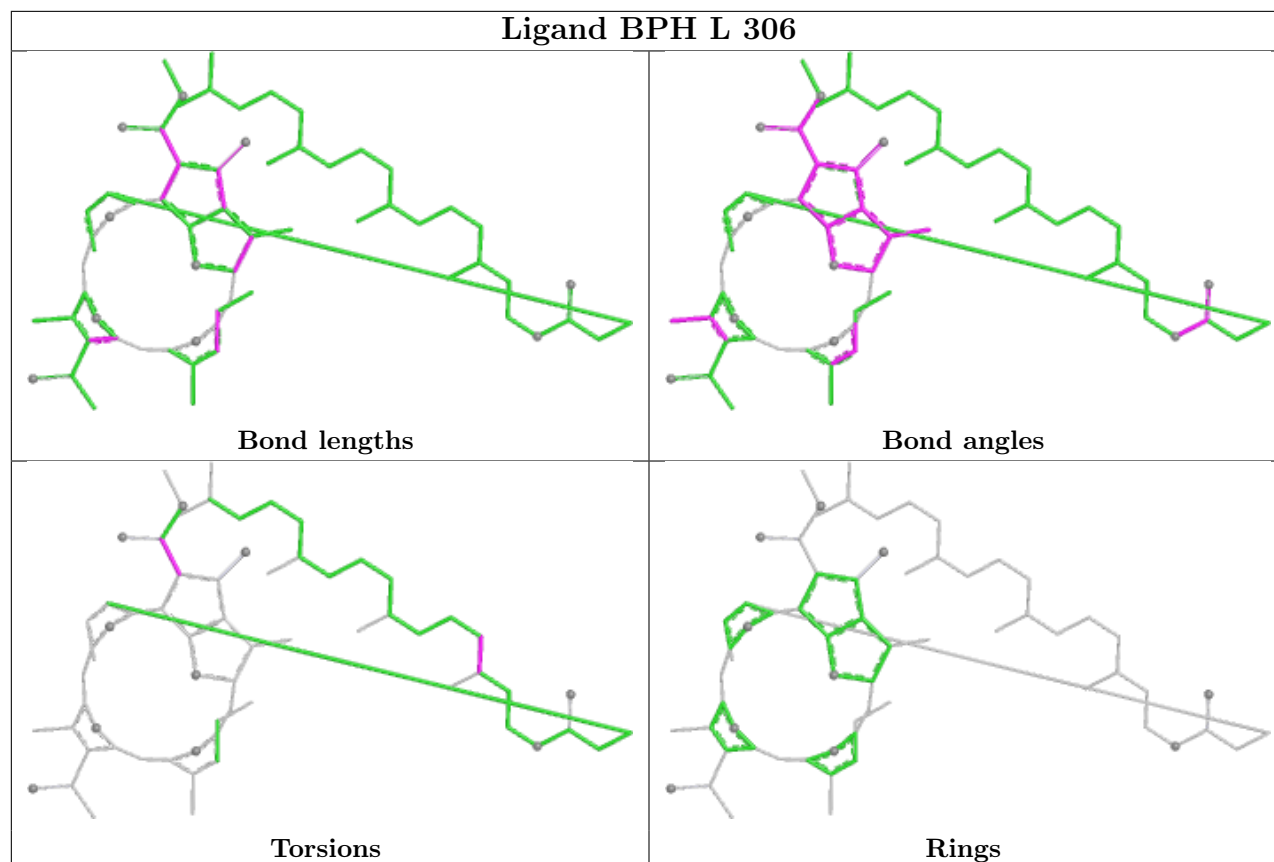
within 10 degrees of the torsion angle in question, then that torsion angle is considered an outlier. Any bond that is central to one or more torsion angles identified as an outlier by Mogul will be highlighted in the graph. For rings, the root-mean-square deviation (RMSD) between the ring in question and similar rings identified by Mogul is calculated over all ring torsion angles. If the average RMSD is greater than 60 degrees and the minimal RMSD between the ring in question and any Mogul-identified rings is also greater than 60 degrees, then that ring is considered an outlier. The outliers are highlighted in purple. The color gray indicates Mogul did not find sufficient equivalents in the CSD to analyse the geometry.











5.7 Other polymers [i](#)

There are no such residues in this entry.

5.8 Polymer linkage issues [i](#)

There are no chain breaks in this entry.

6 Fit of model and data [i](#)

6.1 Protein, DNA and RNA chains [i](#)

In the following table, the column labelled ‘#RSRZ > 2’ contains the number (and percentage) of RSRZ outliers, followed by percent RSRZ outliers for the chain as percentile scores relative to all X-ray entries and entries of similar resolution. The OWAB column contains the minimum, median, 95th percentile and maximum values of the occupancy-weighted average B-factor per residue. The column labelled ‘Q < 0.9’ lists the number of (and percentage) of residues with an average occupancy less than 0.9.

Mol	Chain	Analysed	<RSRZ>	#RSRZ>2	OWAB(Å ²)	Q<0.9
1	H	239/242 (98%)	0.72	28 (11%) 9 8	13, 39, 62, 86	5 (2%)
2	L	281/281 (100%)	1.11	66 (23%) 2 1	17, 37, 63, 118	22 (7%)
3	M	302/303 (99%)	0.96	54 (17%) 3 3	11, 37, 67, 98	6 (1%)
All	All	822/826 (99%)	0.94	148 (18%) 3 3	11, 37, 65, 118	33 (4%)

The worst 5 of 148 RSRZ outliers are listed below:

Mol	Chain	Res	Type	RSRZ
2	L	270[A]	PRO	8.0
2	L	277[A]	GLY	7.0
2	L	281[A]	GLY	6.5
2	L	83	GLY	5.6
2	L	273[A]	ALA	5.6

6.2 Non-standard residues in protein, DNA, RNA chains [i](#)

There are no non-standard protein/DNA/RNA residues in this entry.

6.3 Carbohydrates [i](#)

There are no oligosaccharides in this entry.

6.4 Ligands [i](#)

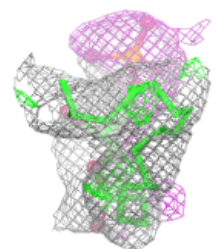
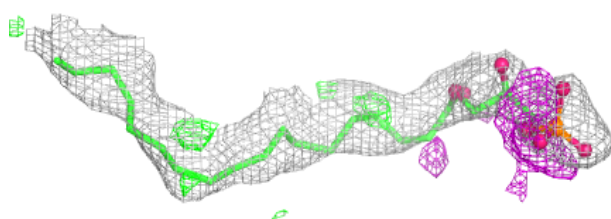
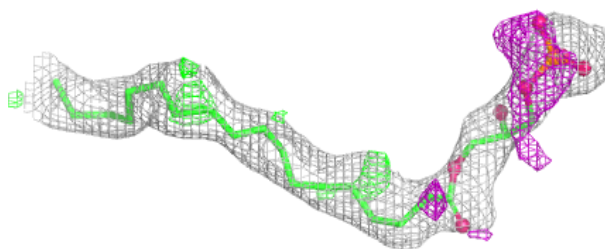
In the following table, the Atoms column lists the number of modelled atoms in the group and the number defined in the chemical component dictionary. The B-factors column lists the minimum, median, 95th percentile and maximum values of B factors of atoms in the group. The column labelled ‘Q < 0.9’ lists the number of atoms with occupancy less than 0.9.

Mol	Type	Chain	Res	Atoms	RSCC	RSR	B-factors(\AA^2)	Q<0.9
4	LDA	M	409	16/16	0.68	0.24	41,62,72,81	0
9	NKP	M	403	29/29	0.73	0.25	36,61,75,81	0
12	SPN	M	408	43/43	0.77	0.21	40,58,81,96	0
6	MYS	L	303	15/15	0.79	0.21	51,58,64,66	0
5	OLC	L	301	25/25	0.80	0.19	35,51,72,74	0
14	PO4	M	412	5/5	0.80	0.12	53,64,72,78	0
9	NKP	M	401	29/29	0.83	0.20	34,71,85,96	0
6	MYS	L	302	15/15	0.84	0.18	56,62,76,80	0
13	EDO	M	411	4/4	0.85	0.15	42,46,53,54	0
6	MYS	M	410	15/15	0.86	0.16	46,62,75,77	0
4	LDA	H	301	16/16	0.87	0.15	34,45,61,70	0
7	BCL	L	304	66/66	0.88	0.13	25,36,50,60	0
7	BCL	L	305	66/66	0.89	0.13	27,35,58,71	0
7	BCL	M	405	66/66	0.90	0.12	25,33,60,78	0
10	U10	M	402	63/63	0.91	0.14	21,48,80,86	0
7	BCL	M	404	66/66	0.91	0.14	28,37,81,85	0
8	BPH	L	306	65/65	0.93	0.10	22,29,45,55	0
8	BPH	M	406	65/65	0.94	0.11	23,34,94,106	0
11	FE	M	407	1/1	1.00	0.02	23,23,23,23	0

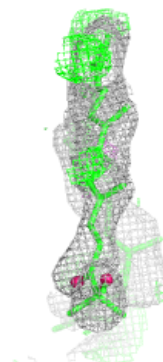
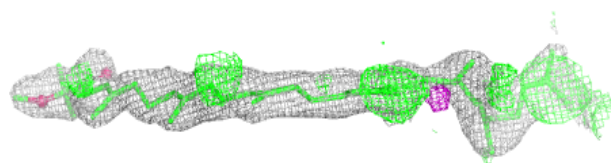
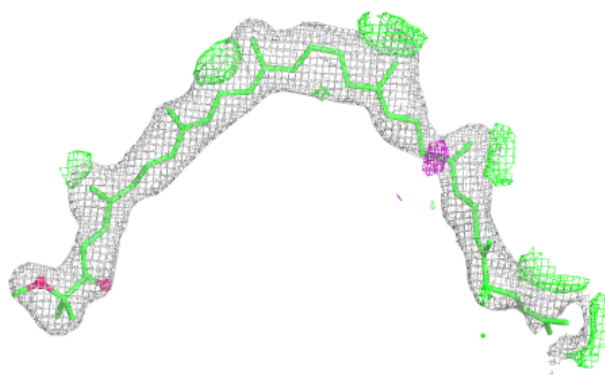
The following is a graphical depiction of the model fit to experimental electron density of all instances of the Ligand of Interest. In addition, ligands with molecular weight > 250 and outliers as shown on the geometry validation Tables will also be included. Each fit is shown from different orientation to approximate a three-dimensional view.

Electron density around NKP M 403:

$2mF_o-DF_c$ (at 0.7 rmsd) in gray
 mF_o-DF_c (at 3 rmsd) in purple (negative)
and green (positive)

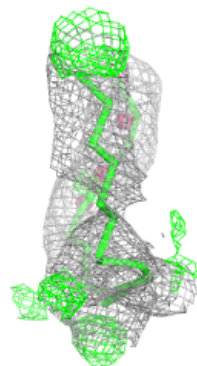
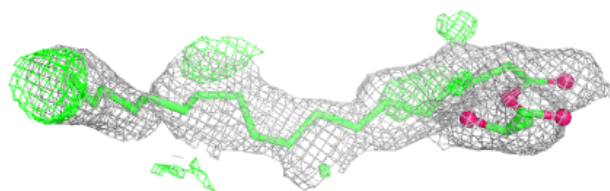
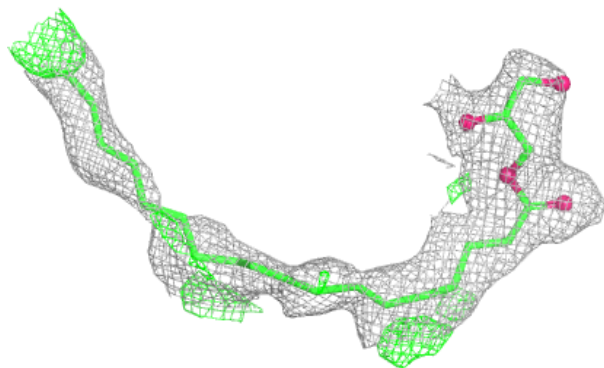
**Electron density around SPN M 408:**

$2mF_o-DF_c$ (at 0.7 rmsd) in gray
 mF_o-DF_c (at 3 rmsd) in purple (negative)
and green (positive)

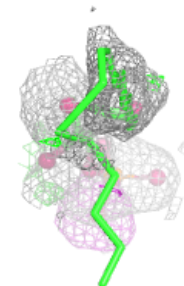
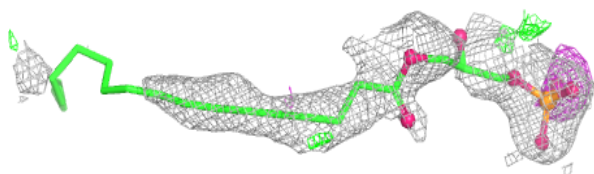
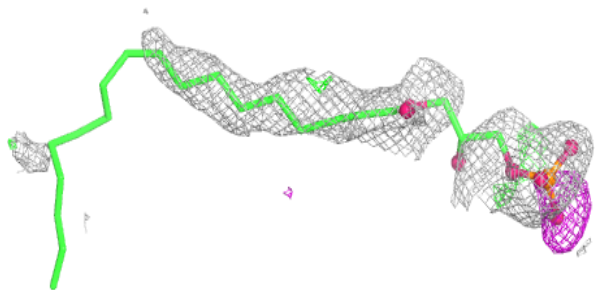


Electron density around OLC L 301:

$2mF_o-DF_c$ (at 0.7 rmsd) in gray
 mF_o-DF_c (at 3 rmsd) in purple (negative)
and green (positive)

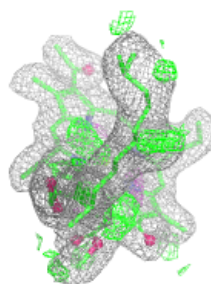
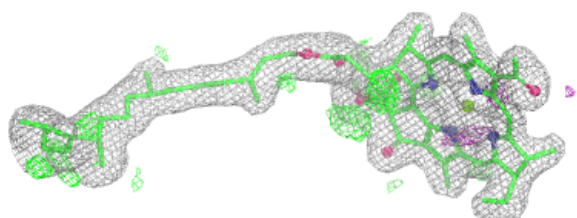
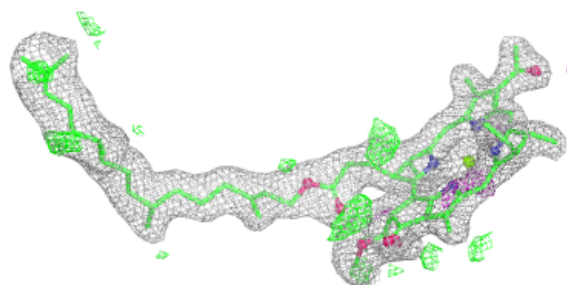
**Electron density around NKP M 401:**

$2mF_o-DF_c$ (at 0.7 rmsd) in gray
 mF_o-DF_c (at 3 rmsd) in purple (negative)
and green (positive)

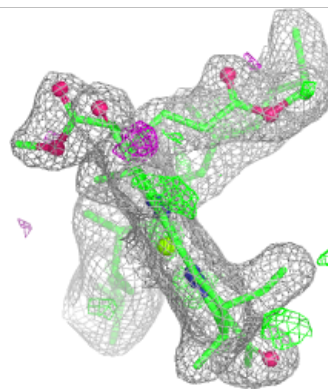
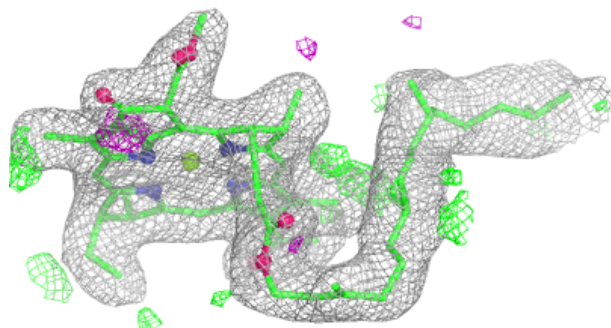
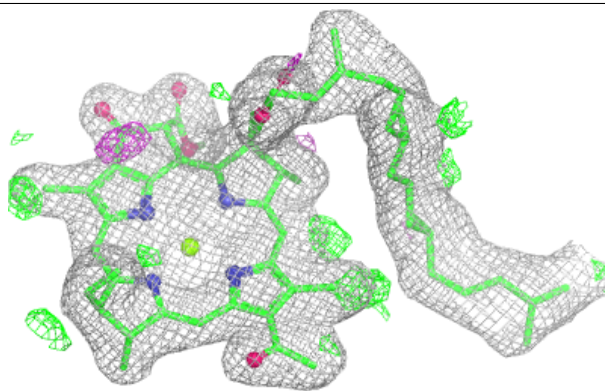


Electron density around BCL L 304:

$2mF_o-DF_c$ (at 0.7 rmsd) in gray
 mF_o-DF_c (at 3 rmsd) in purple (negative)
and green (positive)

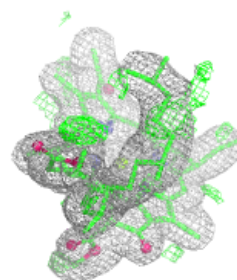
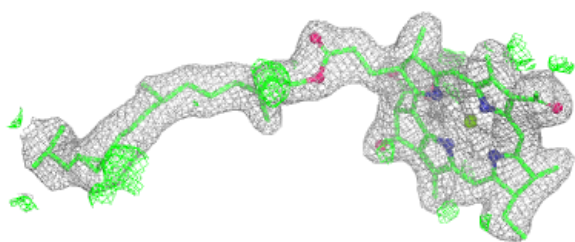
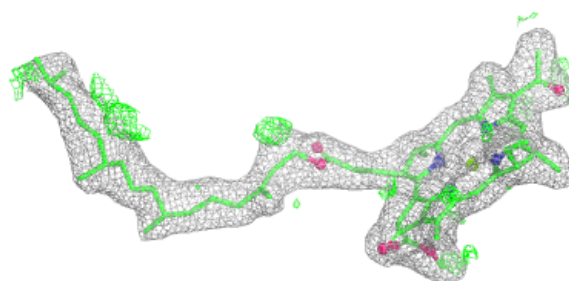
**Electron density around BCL L 305:**

$2mF_o-DF_c$ (at 0.7 rmsd) in gray
 mF_o-DF_c (at 3 rmsd) in purple (negative)
and green (positive)

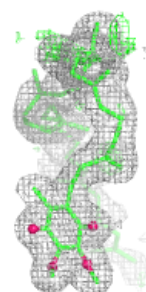
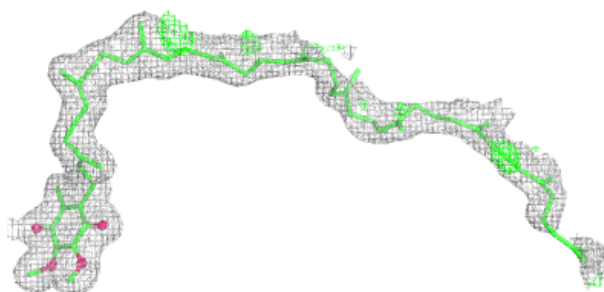


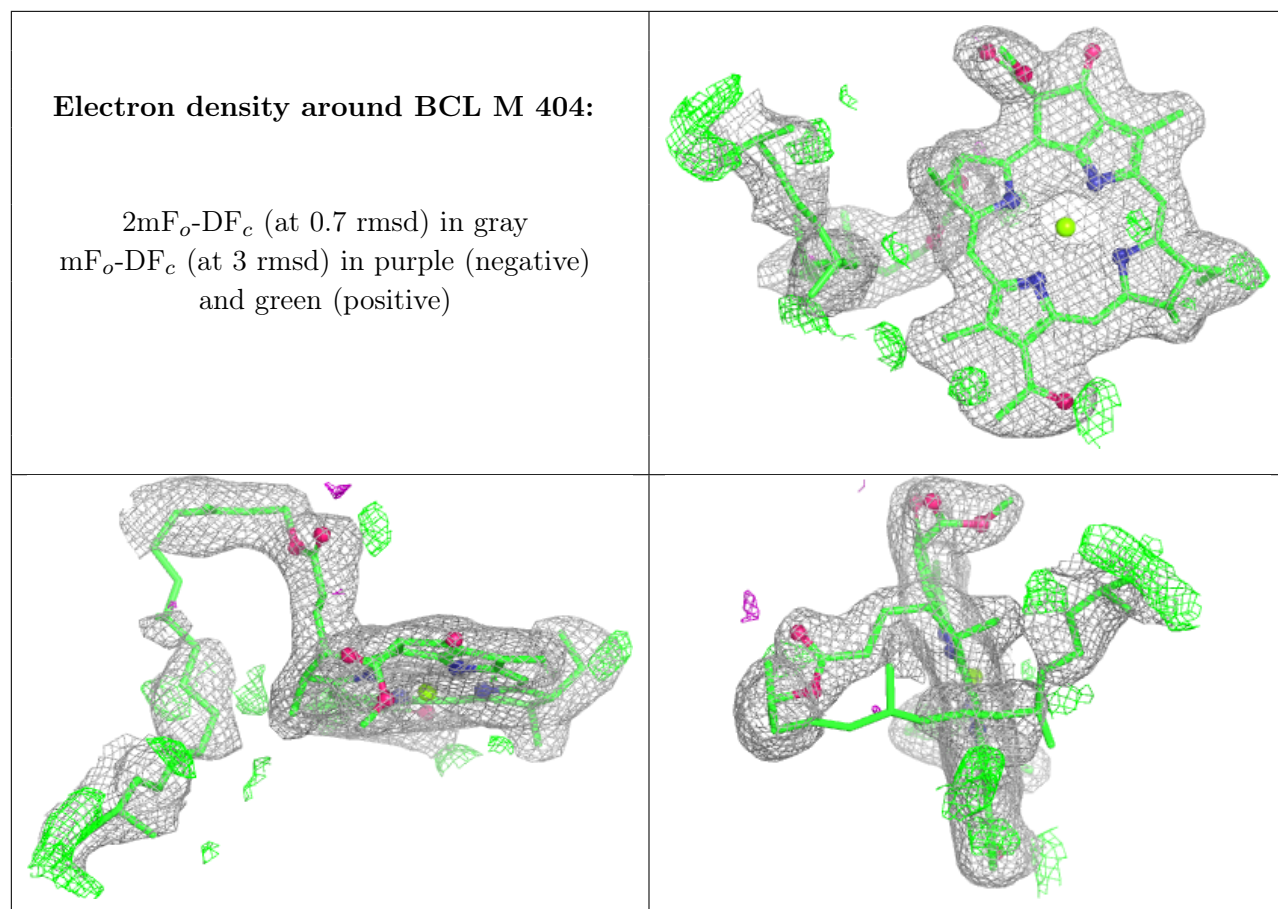
Electron density around BCL M 405:

$2mF_o-DF_c$ (at 0.7 rmsd) in gray
 mF_o-DF_c (at 3 rmsd) in purple (negative)
and green (positive)

**Electron density around U10 M 402:**

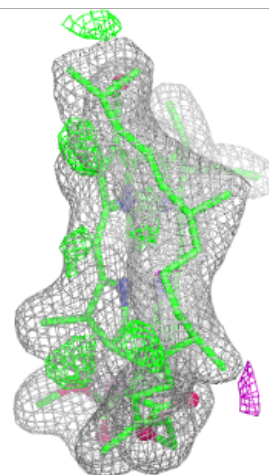
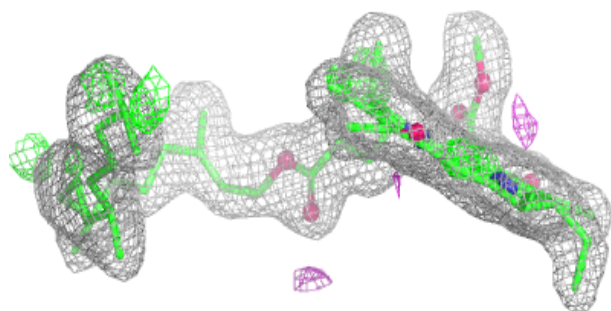
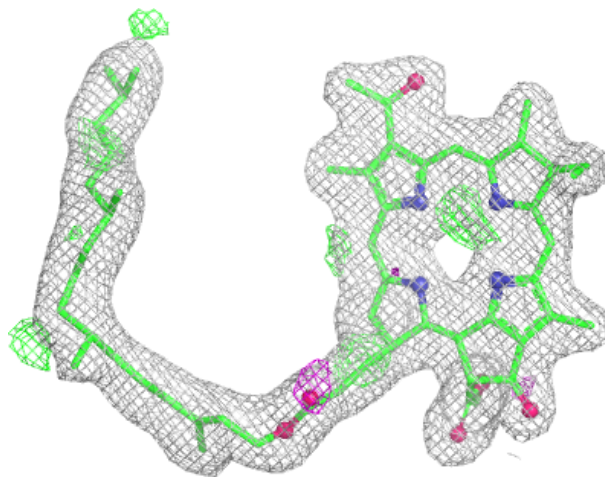
$2mF_o-DF_c$ (at 0.7 rmsd) in gray
 mF_o-DF_c (at 3 rmsd) in purple (negative)
and green (positive)

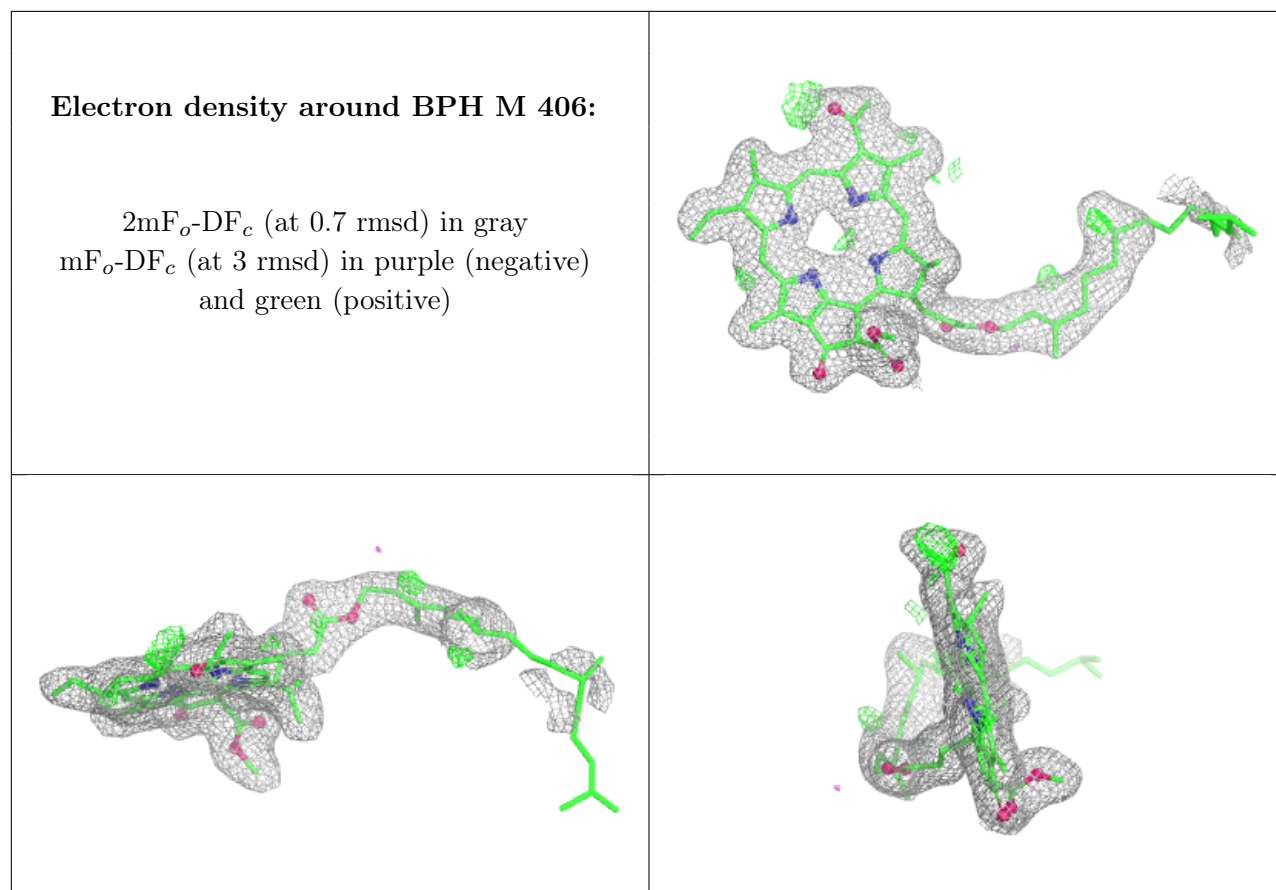




Electron density around BPH L 306:

$2mF_o-DF_c$ (at 0.7 rmsd) in gray
 mF_o-DF_c (at 3 rmsd) in purple (negative)
and green (positive)





6.5 Other polymers [\(i\)](#)

There are no such residues in this entry.