



wwPDB EM Validation Summary Report ⓘ

Mar 27, 2026 – 05:23 AM UTC

PDB ID : 8P53 / pdb_00008p53
EMDB ID : EMD-17445
Title : Cryo-EM structure of the c-di-GMP-free FleQ-FleN master regulator complex of *P. aeruginosa*
Authors : Torres-Sanchez, L.; Krasteva, P.V.
Deposited on : 2023-05-23
Resolution : 2.70 Å(reported)

This is a wwPDB EM Validation Summary Report for a publicly released PDB entry.

We welcome your comments at validation@mail.wwpdb.org

A user guide is available at

<https://www.wwpdb.org/validation/2017/EMValidationReportHelp>

with specific help available everywhere you see the ⓘ symbol.

The types of validation reports are described at

<http://www.wwpdb.org/validation/2017/FAQs#types>.

The following versions of software and data (see [references ⓘ](#)) were used in the production of this report:

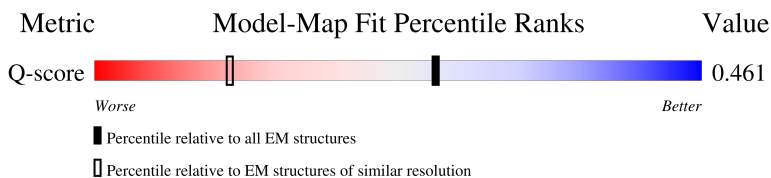
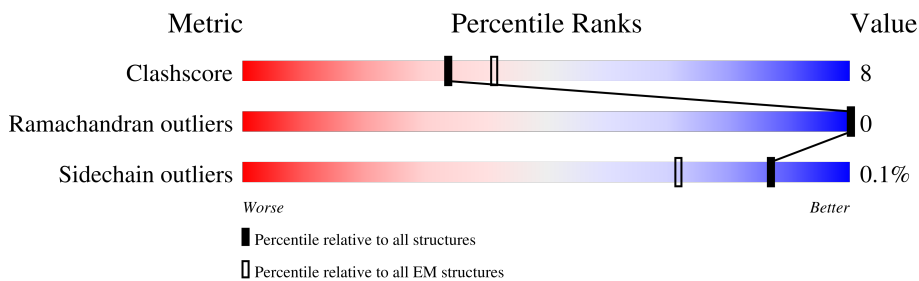
EMDB validation analysis : 0.0.1.dev132
Mogul : 2022.3.0, CSD as543be (2022)
MolProbity : 4-5-2 with Phenix2.0
Buster-report : wwPDB partial adaption of 1.1.7 (2018)
Percentile statistics : 20250101.v01 (using entries in the PDB archive January 1st 2025)
EM percentile statistics : 202505.v01 (Using data in the EMDB archive up until May 2025)
MapQ : 1.9.13
Ideal geometry (proteins) : Engh & Huber (2001)
Ideal geometry (DNA, RNA) : Parkinson et al. (1996)
Validation Pipeline (wwPDB-VP) : 2.49

1 Overall quality at a glance

The following experimental techniques were used to determine the structure:
ELECTRON MICROSCOPY

The reported resolution of this entry is 2.70 Å.

Percentile scores (ranging between 0-100) for global validation metrics of the entry are shown in the following graphic. The table shows the number of entries on which the scores are based.





Metric	Whole archive (#Entries)	EM structures (#Entries)	Similar EM resolution (#Entries, resolution range(Å))
Clashscore	229148	23984	-
Ramachandran outliers	224038	23583	-
Sidechain outliers	223484	23102	-
Q-score	-	25397	10327 (2.20 - 3.20)

The table below summarises the geometric issues observed across the polymeric chains and their fit to the map. The red, orange, yellow and green segments of the bar indicate the fraction of residues that contain outliers for ≥ 3 , 2, 1 and 0 types of geometric quality criteria respectively. A grey segment represents the fraction of residues that are not modelled. The numeric value for each fraction is indicated below the corresponding segment, with a dot representing fractions $\leq 5\%$. The upper red bar (where present) indicates the fraction of residues that have poor fit to the EM map (all-atom inclusion $< 40\%$). The numeric value is given above the bar.

Mol	Chain	Length	Quality of chain
1	A	307	71% 16% 13%
1	B	307	70% 17% 13%
2	C	492	60% 17% 23%
2	D	492	60% 16% 23%

Continued on next page...

Continued from previous page...

Mol	Chain	Length	Quality of chain
2	E	492	 A horizontal bar chart showing the quality of chain E. The bar is divided into three segments: green (65%), yellow (14%), and grey (21%). A small red square is at the start of the bar. <p>65% 14% 21%</p>
2	F	492	 A horizontal bar chart showing the quality of chain F. The bar is divided into three segments: green (64%), yellow (15%), and grey (21%). A small red square is at the start of the bar. <p>64% 15% 21%</p>

2 Entry composition i

There are 4 unique types of molecules in this entry. The entry contains 16299 atoms, of which 0 are hydrogens and 0 are deuteriums.

In the tables below, the AltConf column contains the number of residues with at least one atom in alternate conformation and the Trace column contains the number of residues modelled with at most 2 atoms.

- Molecule 1 is a protein called Antiactivator FleN.

Mol	Chain	Residues	Atoms					AltConf	Trace
			Total	C	N	O	S		
1	A	268	Total	C	N	O	S	0	0
			2028	1288	364	368	8		
1	B	268	Total	C	N	O	S	0	0
			2028	1288	364	368	8		

There are 58 discrepancies between the modelled and reference sequences:

Chain	Residue	Modelled	Actual	Comment	Reference
A	-26	MET	-	initiating methionine	UNP G3XD64
A	-25	SER	-	expression tag	UNP G3XD64
A	-24	TYR	-	expression tag	UNP G3XD64
A	-23	TYR	-	expression tag	UNP G3XD64
A	-22	HIS	-	expression tag	UNP G3XD64
A	-21	HIS	-	expression tag	UNP G3XD64
A	-20	HIS	-	expression tag	UNP G3XD64
A	-19	HIS	-	expression tag	UNP G3XD64
A	-18	HIS	-	expression tag	UNP G3XD64
A	-17	HIS	-	expression tag	UNP G3XD64
A	-16	ASP	-	expression tag	UNP G3XD64
A	-15	TYR	-	expression tag	UNP G3XD64
A	-14	ASP	-	expression tag	UNP G3XD64
A	-13	ILE	-	expression tag	UNP G3XD64
A	-12	PRO	-	expression tag	UNP G3XD64
A	-11	THR	-	expression tag	UNP G3XD64
A	-10	THR	-	expression tag	UNP G3XD64
A	-9	LEU	-	expression tag	UNP G3XD64
A	-8	GLU	-	expression tag	UNP G3XD64
A	-7	VAL	-	expression tag	UNP G3XD64
A	-6	LEU	-	expression tag	UNP G3XD64
A	-5	PHE	-	expression tag	UNP G3XD64
A	-4	GLN	-	expression tag	UNP G3XD64
A	-3	GLY	-	expression tag	UNP G3XD64
A	-2	PRO	-	expression tag	UNP G3XD64
A	-1	MET	-	expression tag	UNP G3XD64

Continued on next page...

Continued from previous page...

Chain	Residue	Modelled	Actual	Comment	Reference
A	0	GLY	-	expression tag	UNP G3XD64
A	1	SER	-	expression tag	UNP G3XD64
A	48	ALA	ASP	engineered mutation	UNP G3XD64
B	-26	MET	-	initiating methionine	UNP G3XD64
B	-25	SER	-	expression tag	UNP G3XD64
B	-24	TYR	-	expression tag	UNP G3XD64
B	-23	TYR	-	expression tag	UNP G3XD64
B	-22	HIS	-	expression tag	UNP G3XD64
B	-21	HIS	-	expression tag	UNP G3XD64
B	-20	HIS	-	expression tag	UNP G3XD64
B	-19	HIS	-	expression tag	UNP G3XD64
B	-18	HIS	-	expression tag	UNP G3XD64
B	-17	HIS	-	expression tag	UNP G3XD64
B	-16	ASP	-	expression tag	UNP G3XD64
B	-15	TYR	-	expression tag	UNP G3XD64
B	-14	ASP	-	expression tag	UNP G3XD64
B	-13	ILE	-	expression tag	UNP G3XD64
B	-12	PRO	-	expression tag	UNP G3XD64
B	-11	THR	-	expression tag	UNP G3XD64
B	-10	THR	-	expression tag	UNP G3XD64
B	-9	LEU	-	expression tag	UNP G3XD64
B	-8	GLU	-	expression tag	UNP G3XD64
B	-7	VAL	-	expression tag	UNP G3XD64
B	-6	LEU	-	expression tag	UNP G3XD64
B	-5	PHE	-	expression tag	UNP G3XD64
B	-4	GLN	-	expression tag	UNP G3XD64
B	-3	GLY	-	expression tag	UNP G3XD64
B	-2	PRO	-	expression tag	UNP G3XD64
B	-1	MET	-	expression tag	UNP G3XD64
B	0	GLY	-	expression tag	UNP G3XD64
B	1	SER	-	expression tag	UNP G3XD64
B	48	ALA	ASP	engineered mutation	UNP G3XD64

- Molecule 2 is a protein called Transcriptional regulator FleQ.

Mol	Chain	Residues	Atoms					AltConf	Trace
			Total	C	N	O	S		
2	C	378	2996	1887	537	557	15	0	0
2	D	377	2989	1882	536	556	15	0	0
2	E	390	3097	1943	563	576	15	0	0

Continued on next page...

Continued from previous page...

Mol	Chain	Residues	Atoms					AltConf	Trace
			Total	C	N	O	S		
2	F	390	3097	1943	563	576	15	0	0

There are 12 discrepancies between the modelled and reference sequences:

Chain	Residue	Modelled	Actual	Comment	Reference
C	-1	MET	-	initiating methionine	UNP G3XCV0
C	0	GLY	-	expression tag	UNP G3XCV0
C	1	SER	-	expression tag	UNP G3XCV0
D	-1	MET	-	initiating methionine	UNP G3XCV0
D	0	GLY	-	expression tag	UNP G3XCV0
D	1	SER	-	expression tag	UNP G3XCV0
E	-1	MET	-	initiating methionine	UNP G3XCV0
E	0	GLY	-	expression tag	UNP G3XCV0
E	1	SER	-	expression tag	UNP G3XCV0
F	-1	MET	-	initiating methionine	UNP G3XCV0
F	0	GLY	-	expression tag	UNP G3XCV0
F	1	SER	-	expression tag	UNP G3XCV0

- Molecule 3 is MAGNESIUM ION (CCD ID: MG) (formula: Mg) (labeled as "Ligand of Interest" by depositor).

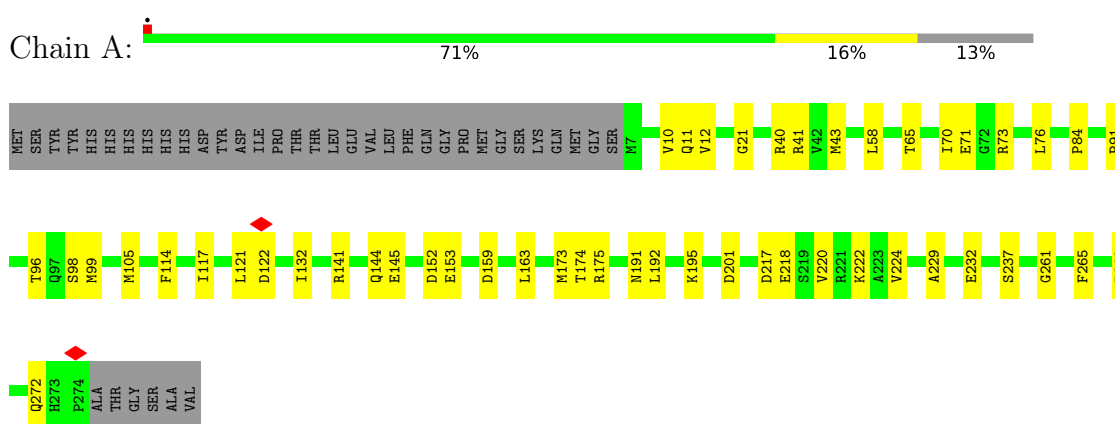
Mol	Chain	Residues	Atoms		AltConf
3	A	1	Total	Mg	0
			1	1	
3	B	1	Total	Mg	0
			1	1	

- Molecule 4 is PHOSPHOMETHYLPHOSPHONIC ACID ADENYLATE ESTER (CCD ID: ACP) (formula: C₁₁H₁₈N₅O₁₂P₃) (labeled as "Ligand of Interest" by depositor).

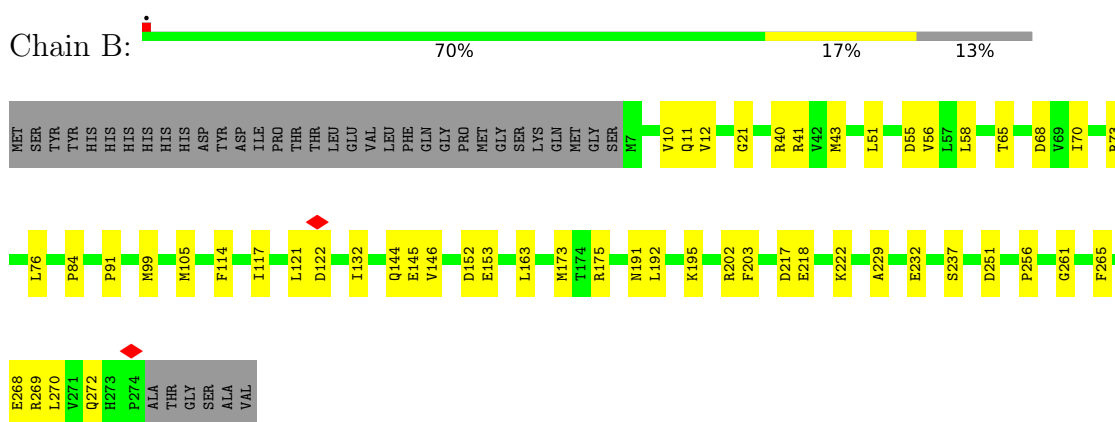
3 Residue-property plots [i](#)

These plots are drawn for all protein, RNA, DNA and oligosaccharide chains in the entry. The first graphic for a chain summarises the proportions of the various outlier classes displayed in the second graphic. The second graphic shows the sequence view annotated by issues in geometry and atom inclusion in map density. Residues are color-coded according to the number of geometric quality criteria for which they contain at least one outlier: green = 0, yellow = 1, orange = 2 and red = 3 or more. A red diamond above a residue indicates a poor fit to the EM map for this residue (all-atom inclusion < 40%). Stretches of 2 or more consecutive residues without any outlier are shown as a green connector. Residues present in the sample, but not in the model, are shown in grey.

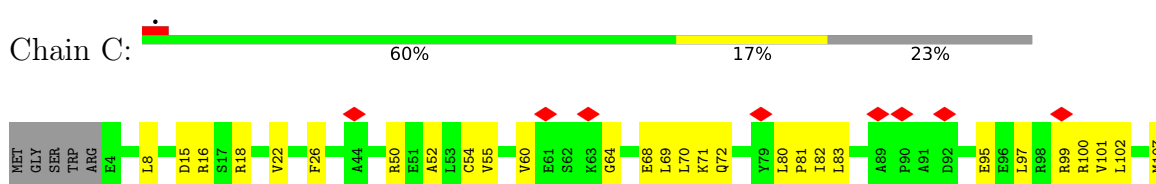
- Molecule 1: Antiactivator FleN



- Molecule 1: Antiactivator FleN



- Molecule 2: Transcriptional regulator FleQ



ALA
GLU
GLY
LEU
LEU
ASP
LEU
LYS
ASP
TYR
LEU
ALA
ALA
ASN
LEU
GLU
GLN
GLY
LEU
ILE
ILE
GLN
GLN
ALA
LEU
ASP
ASP
ALA
GLY
GLY
VAL
VAL
ALA
ALA
ARG
ALA
ALA
GLU
ARG
LEU
ARG
ILE
ARG
ARG
THR
THR
LEU
VAL
VAL
GLU
LYS
MET
MET
LYS
LYS
TYR
GLY
MET
SER
ARG
ARG
ASP
ASP
LEU
SER

ASP
ASP

● Molecule 2: Transcriptional regulator FleQ



MET
GLY
SER
TRP
ARG
E4
TS
K6
I10
R16
D19
L20
A21
V22
I23
L24
L27
L32
A43
L46
A52
L53
S54
V55
L56
V60
E61
S62
K63
E78
I82
I85
D92
E95
E96
R99
R100
V101
H119
R120
R125
D129

R132
E133
G135
R136
S137
R138
M141
L142
F143
R144
R157
Q158
M159
V163
A164
D165
T178
H188
R193
F198
S202
I206
E212
S213
E214
L215
A222
R230
R233
G240
D245
M250
P253
M254
K257
L258
L289
V281

E264
R265
T266
F267
E268
R269
V270
M273
K274
D302
L303
M314
R320
V321
E322
D323
L326
L331
R334
M375
G394
R391
R392
V393
ASP
ASP
GLU
ASP
GLU
GLU
GLN
LEU
ALA
SER
SER
LEU
ARG
ILE
GLU
GLU
LEU
LEU
GLU
GLU
ARG
ALA
ALA
ILE
ALA
ASN
ALA
GLY
PRO

GLY
MET
ASP
ALA
PRO
ALA
MET
LEU
PRO
ALA
GLU
LEU
ASP
LEU
LYS
ASP
TYR
LEU
ALA
ASN
LEU
GLU
GLN
GLY
LEU
ILE
GLN
GLN
ALA
LEU
ASP
ASP
ALA
GLY
VAL
VAL
VAL
ALA
ARG
ALA
ALA
GLU
SER
ARG
LEU
ILE
GLU
ARG
GLU
LEU
LEU
GLU
LEU
ARG
ALA
ALA
ILE
ALA
ASN
MET
ARG
LYS
TYR
GLY

MET
SER
ARG
ARG
ASP
ASP
ASP
LEU
SER
ASP

4 Experimental information

Property	Value	Source
EM reconstruction method	SINGLE PARTICLE	Depositor
Imposed symmetry	POINT, C2	Depositor
Number of particles used	404228	Depositor
Resolution determination method	FSC 0.143 CUT-OFF	Depositor
CTF correction method	PHASE FLIPPING AND AMPLITUDE CORRECTION; Gctf software	Depositor
Microscope	FEI TITAN KRIOS	Depositor
Voltage (kV)	300	Depositor
Electron dose ($e^-/\text{\AA}^2$)	51.5	Depositor
Minimum defocus (nm)	300	Depositor
Maximum defocus (nm)	2500	Depositor
Magnification	Not provided	
Image detector	GATAN K3 (6k x 4k)	Depositor
Maximum map value	1.771	Depositor
Minimum map value	-0.002	Depositor
Average map value	0.001	Depositor
Map value standard deviation	0.018	Depositor
Recommended contour level	0.028	Depositor
Map size (\AA)	369.6, 369.6, 369.6	wwPDB
Map dimensions	560, 560, 560	wwPDB
Map angles ($^\circ$)	90.0, 90.0, 90.0	wwPDB
Pixel spacing (\AA)	0.66, 0.66, 0.66	Depositor

5 Model quality [i](#)

5.1 Standard geometry [i](#)

Bond lengths and bond angles in the following residue types are not validated in this section: ACP, MG

The Z score for a bond length (or angle) is the number of standard deviations the observed value is removed from the expected value. A bond length (or angle) with $|Z| > 5$ is considered an outlier worth inspection. RMSZ is the root-mean-square of all Z scores of the bond lengths (or angles).

Mol	Chain	Bond lengths		Bond angles	
		RMSZ	# Z >5	RMSZ	# Z >5
1	A	0.16	0/2062	0.29	0/2802
1	B	0.16	0/2062	0.29	0/2802
2	C	0.15	0/3047	0.35	0/4115
2	D	0.15	0/3040	0.35	0/4105
2	E	0.16	0/3150	0.36	0/4253
2	F	0.16	0/3150	0.37	0/4253
All	All	0.16	0/16511	0.34	0/22330

There are no bond length outliers.

There are no bond angle outliers.

There are no chirality outliers.

There are no planarity outliers.

5.2 Too-close contacts [i](#)

In the following table, the Non-H and H(model) columns list the number of non-hydrogen atoms and hydrogen atoms in the chain respectively. The H(added) column lists the number of hydrogen atoms added and optimized by MolProbity. The Clashes column lists the number of clashes within the asymmetric unit, whereas Symm-Clashes lists symmetry-related clashes.

Mol	Chain	Non-H	H(model)	H(added)	Clashes	Symm-Clashes
1	A	2028	0	2096	37	0
1	B	2028	0	2096	37	0
2	C	2996	0	3022	61	0
2	D	2989	0	3013	55	0
2	E	3097	0	3121	46	0
2	F	3097	0	3121	49	0
3	A	1	0	0	0	0

Continued on next page...

Continued from previous page...

Mol	Chain	Non-H	H(model)	H(added)	Clashes	Symm-Clashes
3	B	1	0	0	0	0
4	A	31	0	14	1	0
4	B	31	0	14	2	0
All	All	16299	0	16497	269	0

The all-atom clashscore is defined as the number of clashes found per 1000 atoms (including hydrogen atoms). The all-atom clashscore for this structure is 8.

The worst 5 of 269 close contacts within the same asymmetric unit are listed below, sorted by their clash magnitude.

Atom-1	Atom-2	Interatomic distance (Å)	Clash overlap (Å)
2:F:141:ASN:HD22	2:F:141:ASN:C	1.89	0.79
2:D:214:GLU:OE2	2:D:233:ARG:NH1	2.17	0.78
2:C:214:GLU:OE2	2:C:233:ARG:NH1	2.16	0.77
2:E:141:ASN:O	2:E:141:ASN:ND2	2.18	0.76
1:B:68:ASP:OD1	1:B:73:ARG:NH2	2.18	0.76

There are no symmetry-related clashes.

5.3 Torsion angles [i](#)

5.3.1 Protein backbone [i](#)

In the following table, the Percentiles column shows the percent Ramachandran outliers of the chain as a percentile score with respect to all PDB entries followed by that with respect to all EM entries.

The Analysed column shows the number of residues for which the backbone conformation was analysed, and the total number of residues.

Mol	Chain	Analysed	Favoured	Allowed	Outliers	Percentiles	
1	A	266/307 (87%)	259 (97%)	7 (3%)	0	100	100
1	B	266/307 (87%)	259 (97%)	7 (3%)	0	100	100
2	C	374/492 (76%)	365 (98%)	9 (2%)	0	100	100
2	D	373/492 (76%)	362 (97%)	11 (3%)	0	100	100
2	E	388/492 (79%)	373 (96%)	15 (4%)	0	100	100
2	F	388/492 (79%)	371 (96%)	17 (4%)	0	100	100
All	All	2055/2582 (80%)	1989 (97%)	66 (3%)	0	100	100

There are no Ramachandran outliers to report.

5.3.2 Protein sidechains [i](#)

In the following table, the Percentiles column shows the percent sidechain outliers of the chain as a percentile score with respect to all PDB entries followed by that with respect to all EM entries.

The Analysed column shows the number of residues for which the sidechain conformation was analysed, and the total number of residues.

Mol	Chain	Analysed	Rotameric	Outliers	Percentiles	
1	A	218/251 (87%)	218 (100%)	0	100	100
1	B	218/251 (87%)	218 (100%)	0	100	100
2	C	324/415 (78%)	324 (100%)	0	100	100
2	D	323/415 (78%)	323 (100%)	0	100	100
2	E	334/415 (80%)	333 (100%)	1 (0%)	86	94
2	F	334/415 (80%)	333 (100%)	1 (0%)	86	94
All	All	1751/2162 (81%)	1749 (100%)	2 (0%)	87	96

All (2) residues with a non-rotameric sidechain are listed below:

Mol	Chain	Res	Type
2	E	141	ASN
2	F	141	ASN

Sometimes sidechains can be flipped to improve hydrogen bonding and reduce clashes. 5 of 12 such sidechains are listed below:

Mol	Chain	Res	Type
2	D	13	ASN
2	D	356	HIS
2	F	287	HIS
2	D	361	ASN
1	B	168	ASN

5.3.3 RNA [i](#)

There are no RNA molecules in this entry.

5.4 Non-standard residues in protein, DNA, RNA chains [i](#)

There are no non-standard protein/DNA/RNA residues in this entry.

5.5 Carbohydrates [i](#)

There are no oligosaccharides in this entry.

5.6 Ligand geometry [i](#)

Of 4 ligands modelled in this entry, 2 are monoatomic - leaving 2 for Mogul analysis.

In the following table, the Counts columns list the number of bonds (or angles) for which Mogul statistics could be retrieved, the number of bonds (or angles) that are observed in the model and the number of bonds (or angles) that are defined in the Chemical Component Dictionary. The Link column lists molecule types, if any, to which the group is linked. The Z score for a bond length (or angle) is the number of standard deviations the observed value is removed from the expected value. A bond length (or angle) with $|Z| > 2$ is considered an outlier worth inspection. RMSZ is the root-mean-square of all Z scores of the bond lengths (or angles).

Mol	Type	Chain	Res	Link	Bond lengths			Bond angles		
					Counts	RMSZ	# Z > 2	Counts	RMSZ	# Z > 2
4	ACP	A	302	3	31,33,33	0.73	1 (3%)	47,52,52	0.63	0
4	ACP	B	302	3	31,33,33	0.75	1 (3%)	47,52,52	0.69	1 (2%)

In the following table, the Chirals column lists the number of chiral outliers, the number of chiral centers analysed, the number of these observed in the model and the number defined in the Chemical Component Dictionary. Similar counts are reported in the Torsion and Rings columns. '-' means no outliers of that kind were identified.

Mol	Type	Chain	Res	Link	Chirals	Torsions	Rings
4	ACP	A	302	3	-	1/19/38/38	0/3/3/3
4	ACP	B	302	3	-	0/19/38/38	0/3/3/3

All (2) bond length outliers are listed below:

Mol	Chain	Res	Type	Atoms	Z	Observed(Å)	Ideal(Å)
4	B	302	ACP	PB-O2B	-2.36	1.50	1.56
4	A	302	ACP	PB-O2B	-2.31	1.50	1.56

All (1) bond angle outliers are listed below:

Mol	Chain	Res	Type	Atoms	Z	Observed(°)	Ideal(°)
4	B	302	ACP	O1G-PG-C3B	-2.27	106.41	111.37

There are no chirality outliers.

All (1) torsion outliers are listed below:

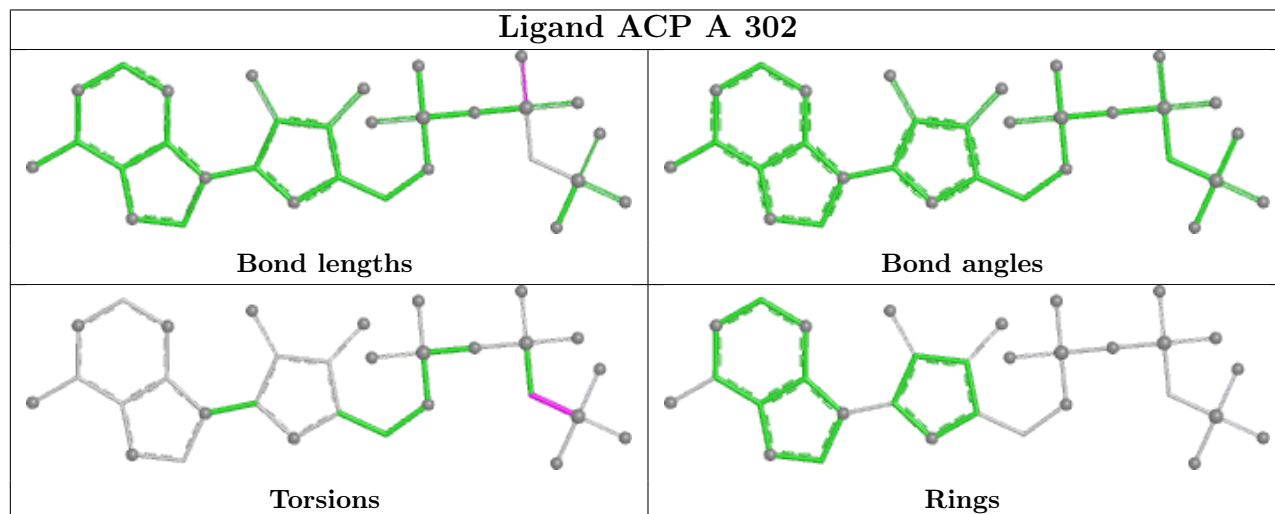
Mol	Chain	Res	Type	Atoms
4	A	302	ACP	PB-C3B-PG-O1G

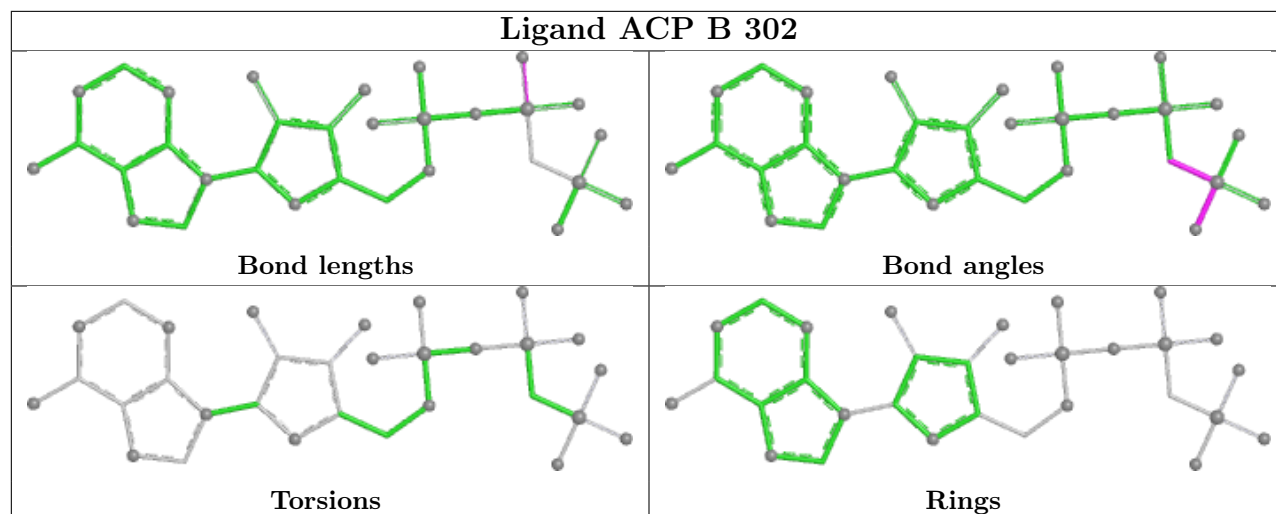
There are no ring outliers.

2 monomers are involved in 3 short contacts:

Mol	Chain	Res	Type	Clashes	Symm-Clashes
4	A	302	ACP	1	0
4	B	302	ACP	2	0

The following is a two-dimensional graphical depiction of Mogul quality analysis of bond lengths, bond angles, torsion angles, and ring geometry for all instances of the Ligand of Interest. In addition, ligands with molecular weight > 250 and outliers as shown on the validation Tables will also be included. For torsion angles, if less than 5% of the Mogul distribution of torsion angles is within 10 degrees of the torsion angle in question, then that torsion angle is considered an outlier. Any bond that is central to one or more torsion angles identified as an outlier by Mogul will be highlighted in the graph. For rings, the root-mean-square deviation (RMSD) between the ring in question and similar rings identified by Mogul is calculated over all ring torsion angles. If the average RMSD is greater than 60 degrees and the minimal RMSD between the ring in question and any Mogul-identified rings is also greater than 60 degrees, then that ring is considered an outlier. The outliers are highlighted in purple. The color gray indicates Mogul did not find sufficient equivalents in the CSD to analyse the geometry.





5.7 Other polymers [i](#)

There are no such residues in this entry.

5.8 Polymer linkage issues [i](#)

There are no chain breaks in this entry.

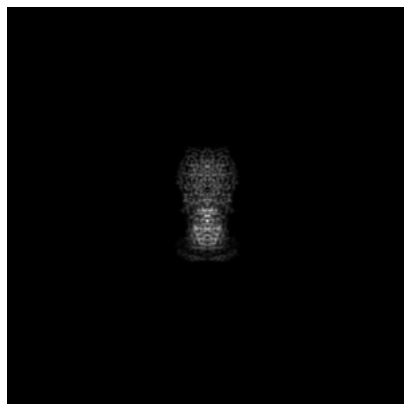
6 Map visualisation [i](#)

This section contains visualisations of the EMDB entry EMD-17445. These allow visual inspection of the internal detail of the map and identification of artifacts.

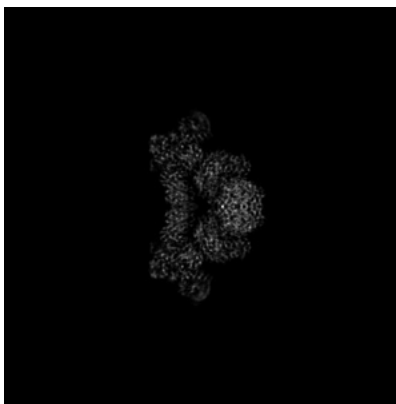
Images derived from a raw map, generated by summing the deposited half-maps, are presented below the corresponding image components of the primary map to allow further visual inspection and comparison with those of the primary map.

6.1 Orthogonal projections [i](#)

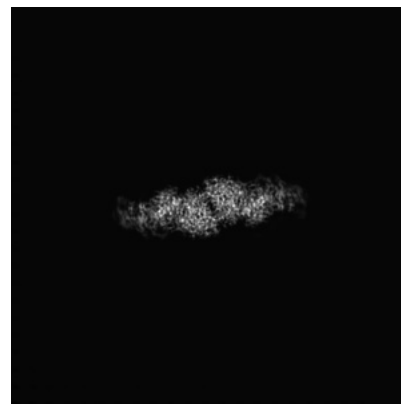
6.1.1 Primary map



X

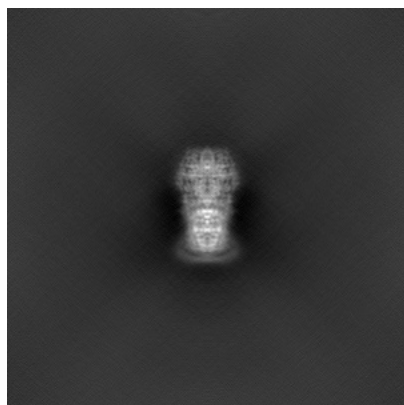


Y

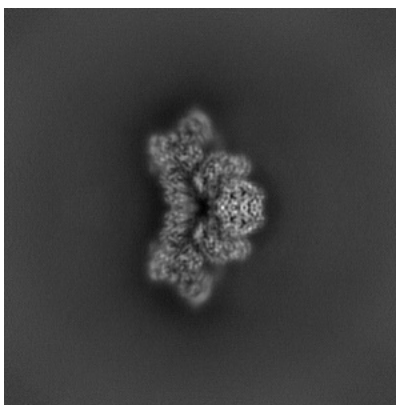


Z

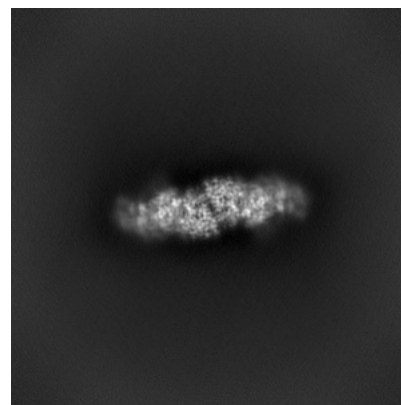
6.1.2 Raw map



X



Y

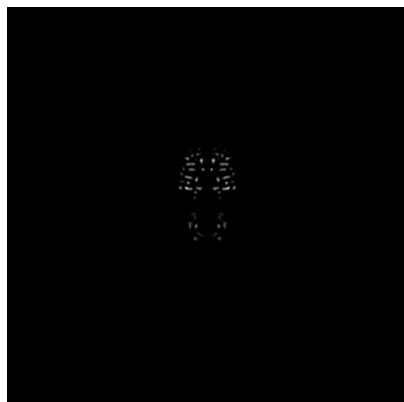


Z

The images above show the map projected in three orthogonal directions.

6.2 Central slices [i](#)

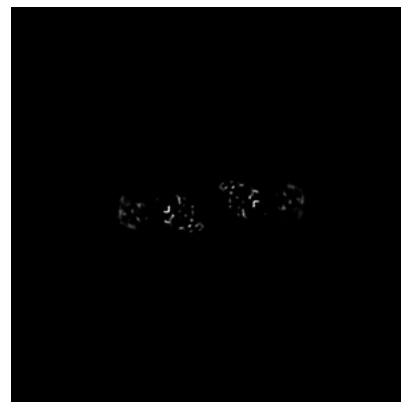
6.2.1 Primary map



X Index: 280

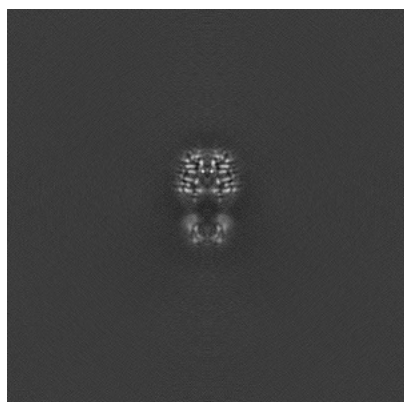


Y Index: 280

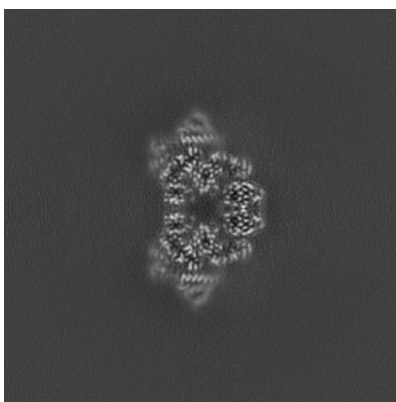


Z Index: 280

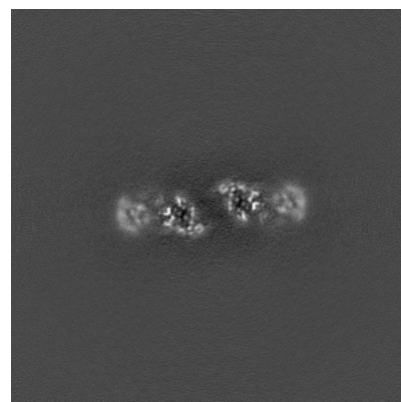
6.2.2 Raw map



X Index: 280



Y Index: 280



Z Index: 280

The images above show central slices of the map in three orthogonal directions.

6.3 Largest variance slices [i](#)

6.3.1 Primary map



X Index: 297

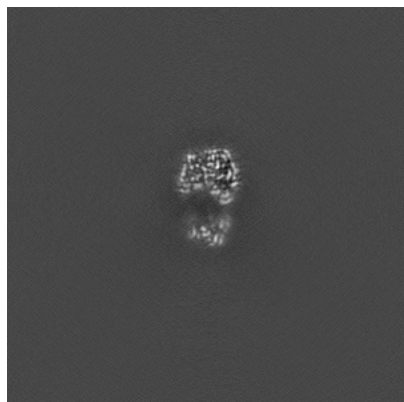


Y Index: 277

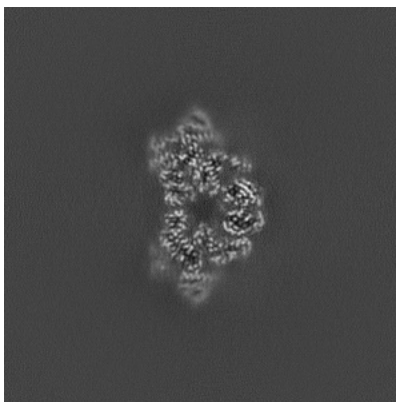


Z Index: 249

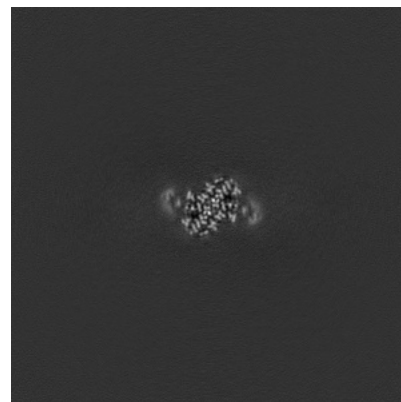
6.3.2 Raw map



X Index: 287



Y Index: 283

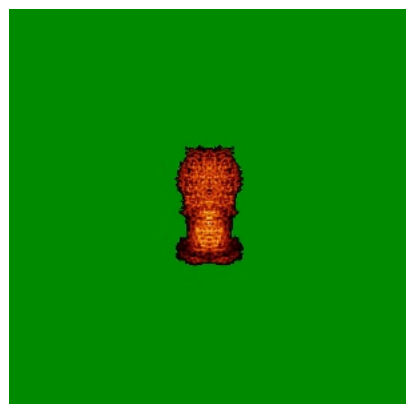


Z Index: 338

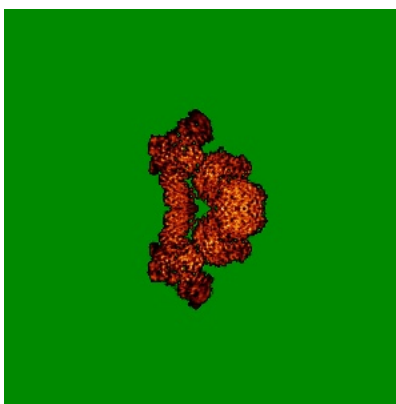
The images above show the largest variance slices of the map in three orthogonal directions.

6.4 Orthogonal standard-deviation projections (False-color) [i](#)

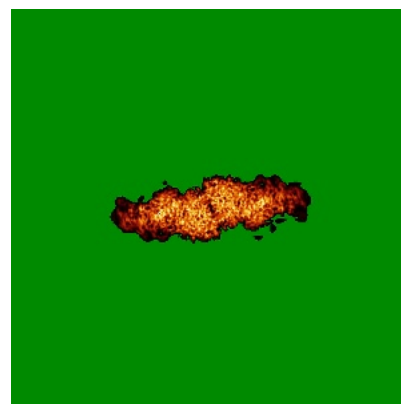
6.4.1 Primary map



X



Y

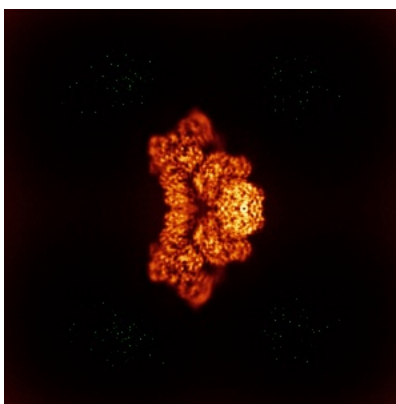


Z

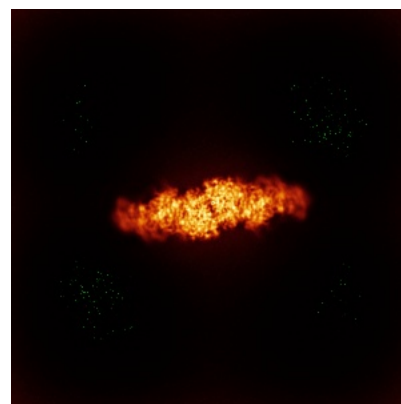
6.4.2 Raw map



X



Y

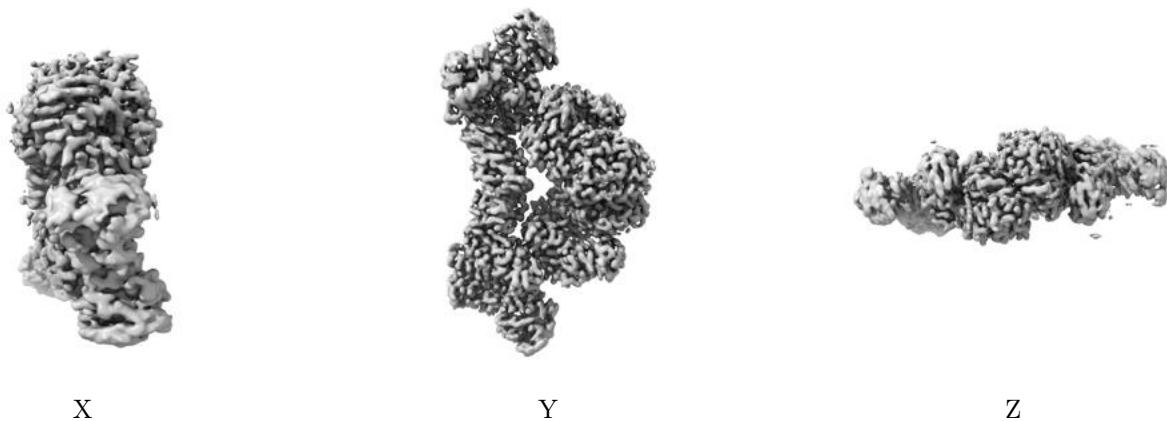


Z

The images above show the map standard deviation projections with false color in three orthogonal directions. Minimum values are shown in green, max in blue, and dark to light orange shades represent small to large values respectively.

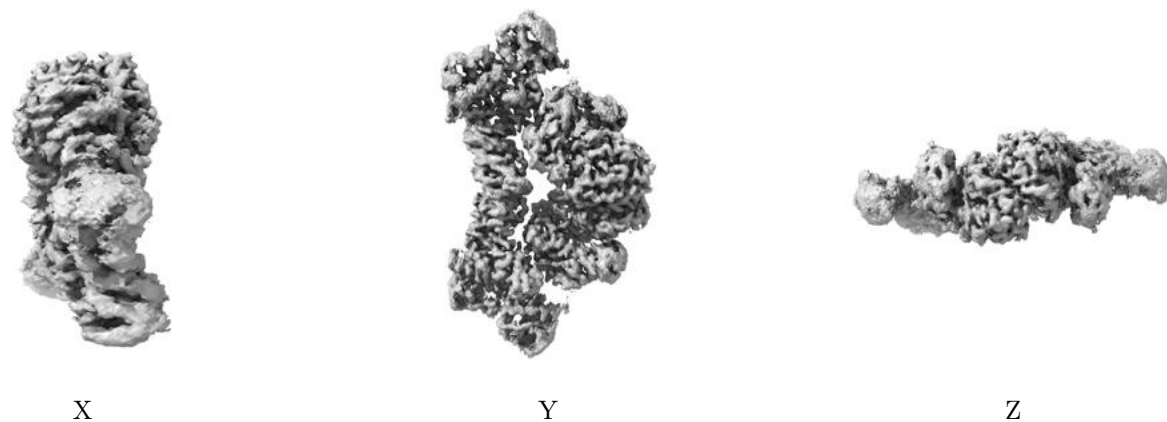
6.5 Orthogonal surface views [i](#)

6.5.1 Primary map



The images above show the 3D surface view of the map at the recommended contour level 0.028. These images, in conjunction with the slice images, may facilitate assessment of whether an appropriate contour level has been provided.

6.5.2 Raw map



These images show the 3D surface of the raw map. The raw map's contour level was selected so that its surface encloses the same volume as the primary map does at its recommended contour level.

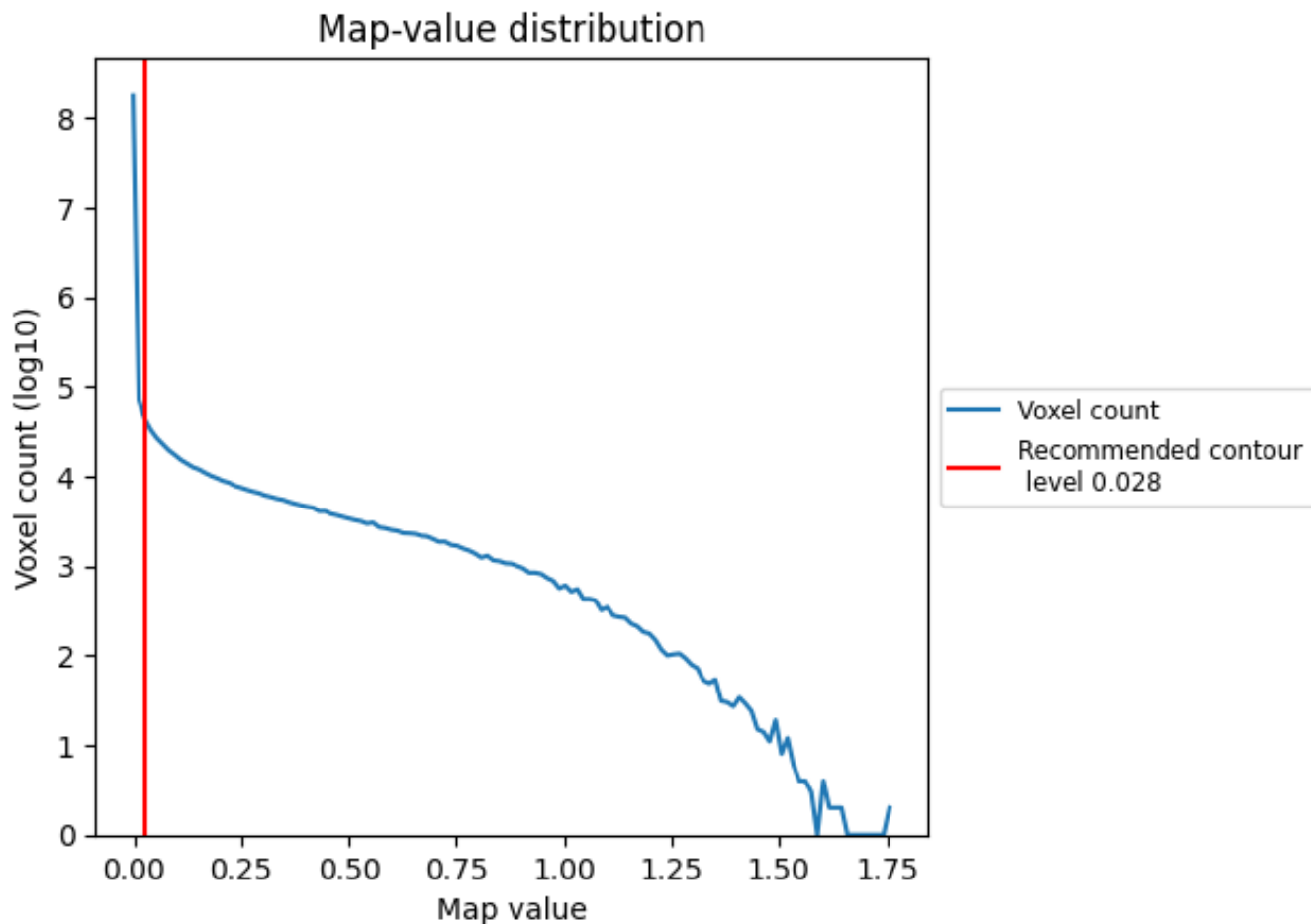
6.6 Mask visualisation [i](#)

This section was not generated. No masks/segmentation were deposited.

7 Map analysis [i](#)

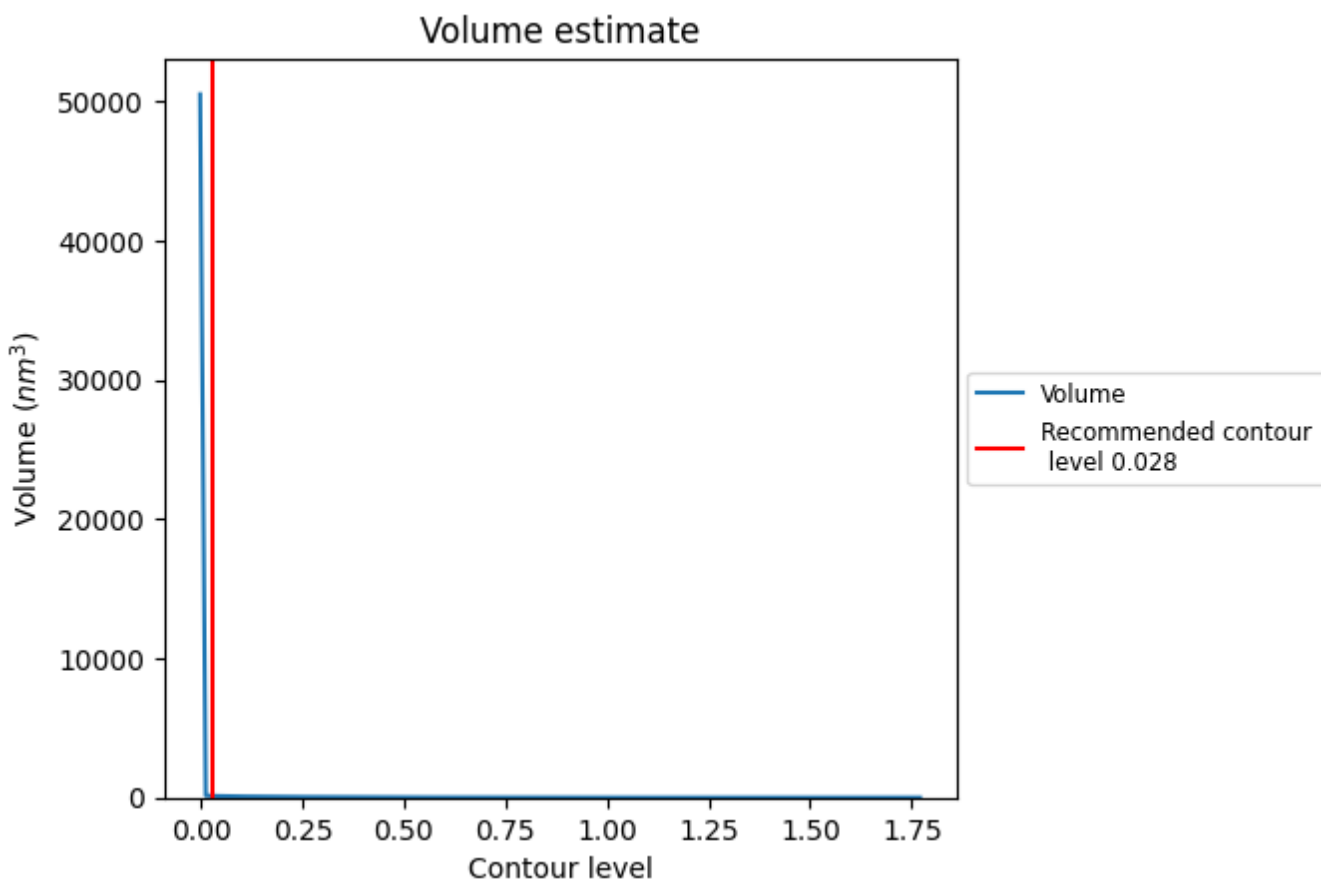
This section contains the results of statistical analysis of the map.

7.1 Map-value distribution [i](#)



The map-value distribution is plotted in 128 intervals along the x-axis. The y-axis is logarithmic. A spike in this graph at zero usually indicates that the volume has been masked.

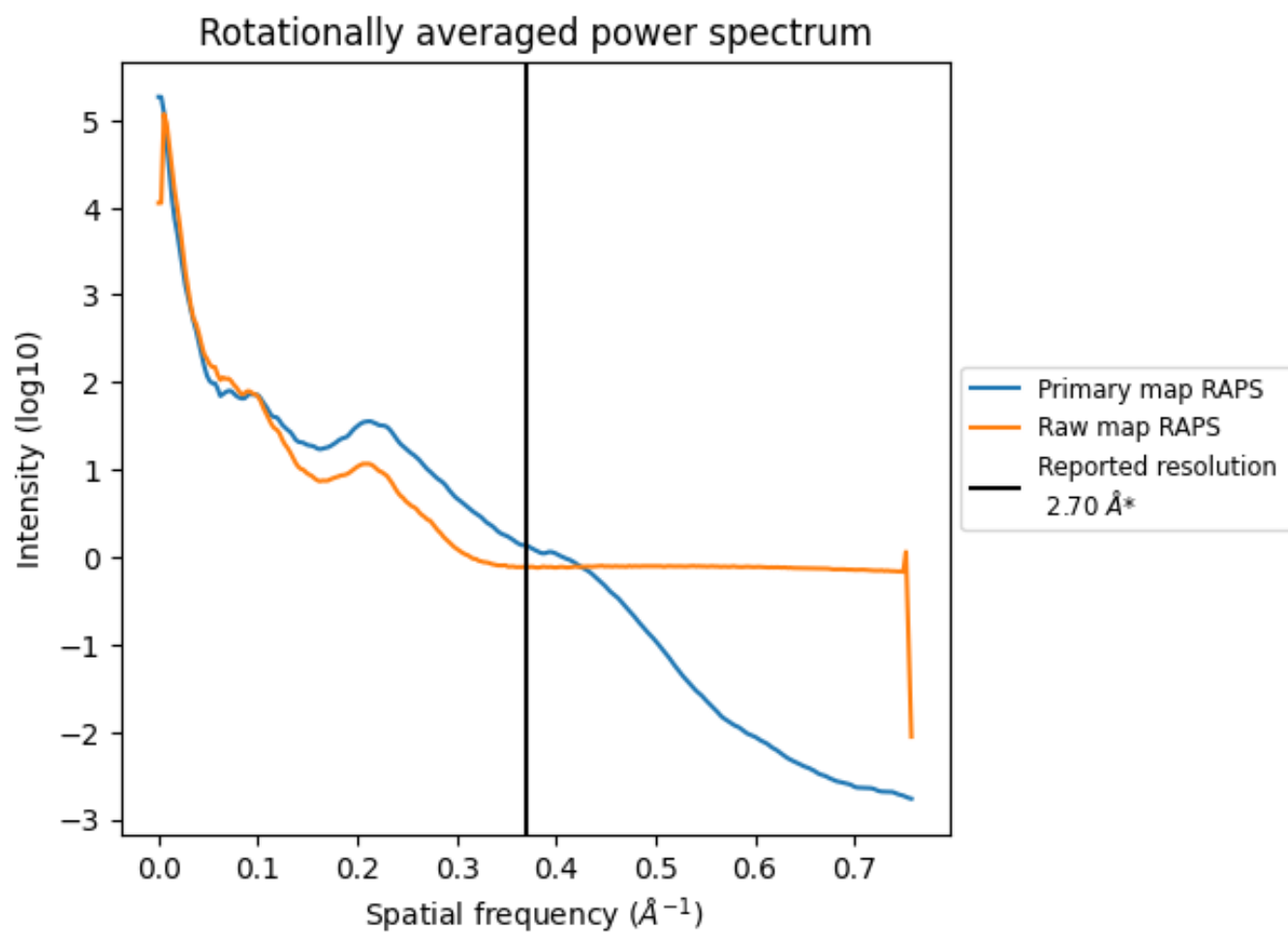
7.2 Volume estimate [i](#)



The volume at the recommended contour level is 123 nm³; this corresponds to an approximate mass of 111 kDa.

The volume estimate graph shows how the enclosed volume varies with the contour level. The recommended contour level is shown as a vertical line and the intersection between the line and the curve gives the volume of the enclosed surface at the given level.

7.3 Rotationally averaged power spectrum [i](#)

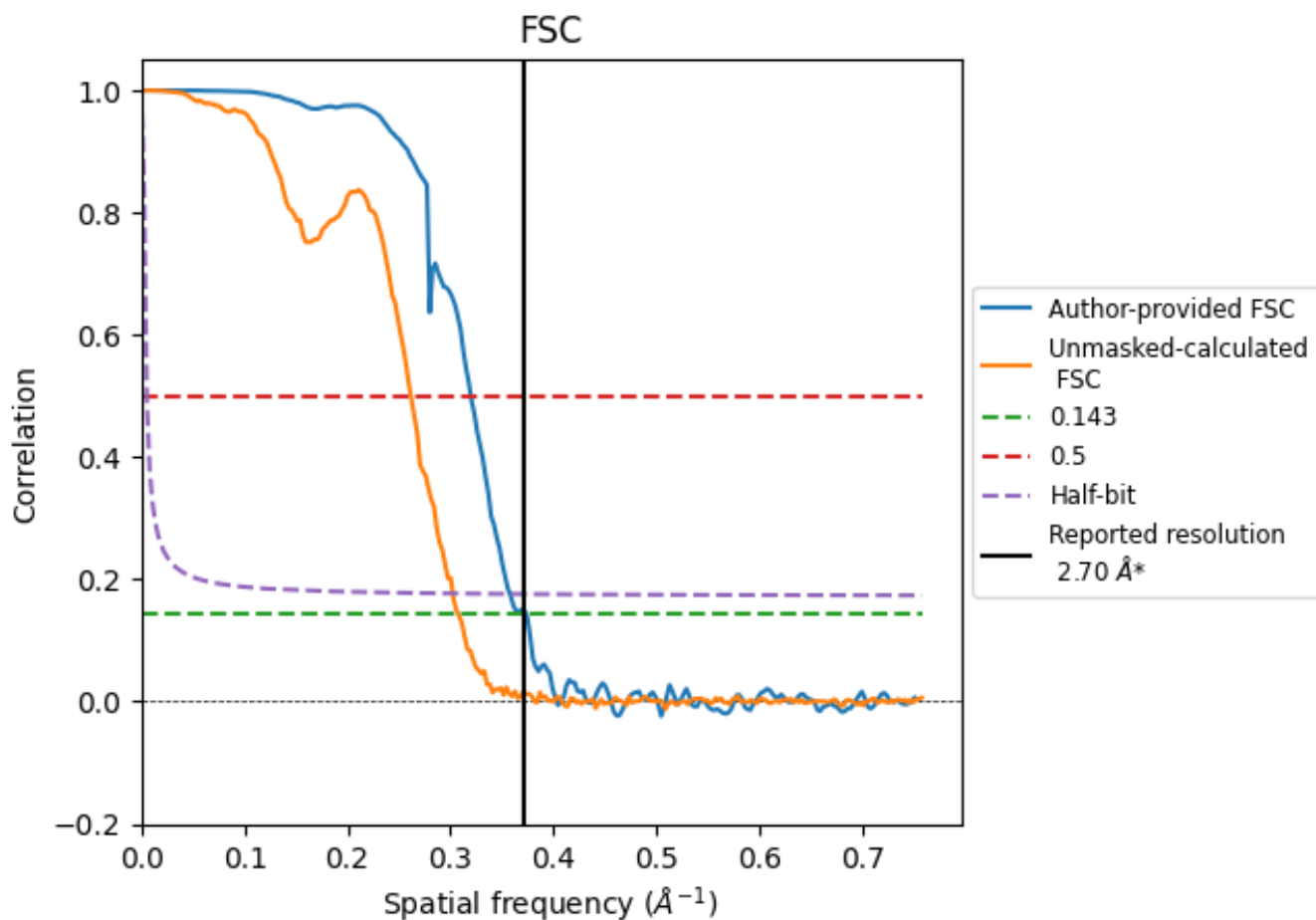


*Reported resolution corresponds to spatial frequency of 0.370 Å⁻¹

8 Fourier-Shell correlation [i](#)

Fourier-Shell Correlation (FSC) is the most commonly used method to estimate the resolution of single-particle and subtomogram-averaged maps. The shape of the curve depends on the imposed symmetry, mask and whether or not the two 3D reconstructions used were processed from a common reference. The reported resolution is shown as a black line. A curve is displayed for the half-bit criterion in addition to lines showing the 0.143 gold standard cut-off and 0.5 cut-off.

8.1 FSC [i](#)



*Reported resolution corresponds to spatial frequency of 0.370 Å⁻¹

8.2 Resolution estimates [i](#)

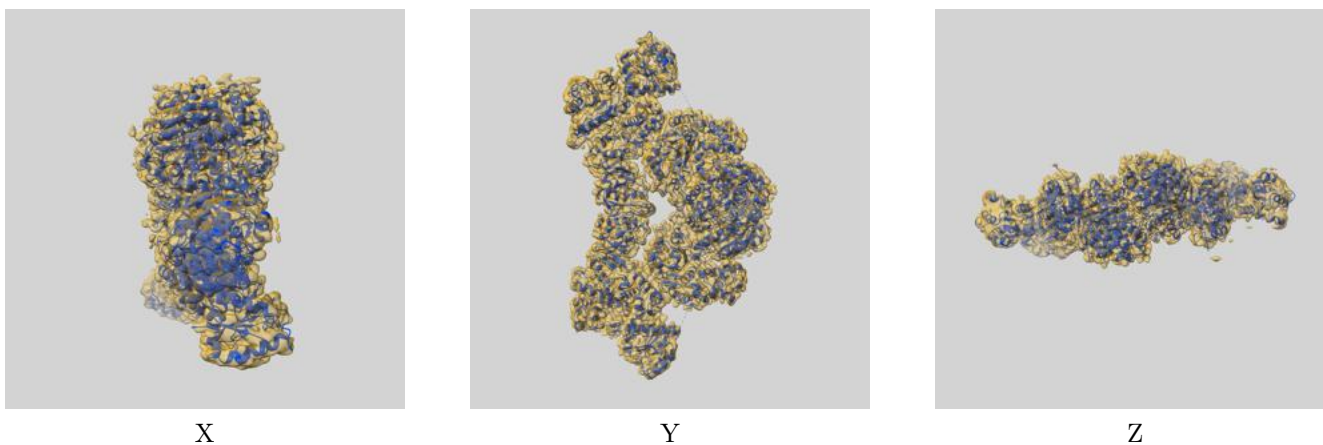
Resolution estimate (Å)	Estimation criterion (FSC cut-off)		
	0.143	0.5	Half-bit
Reported by author	2.70	-	-
Author-provided FSC curve	2.68	3.13	2.79
Unmasked-calculated*	3.25	3.82	3.31

*Resolution estimate based on FSC curve calculated by comparison of deposited half-maps. The value from deposited half-maps intersecting FSC 0.143 CUT-OFF 3.25 differs from the reported value 2.7 by more than 10 %

9 Map-model fit [i](#)

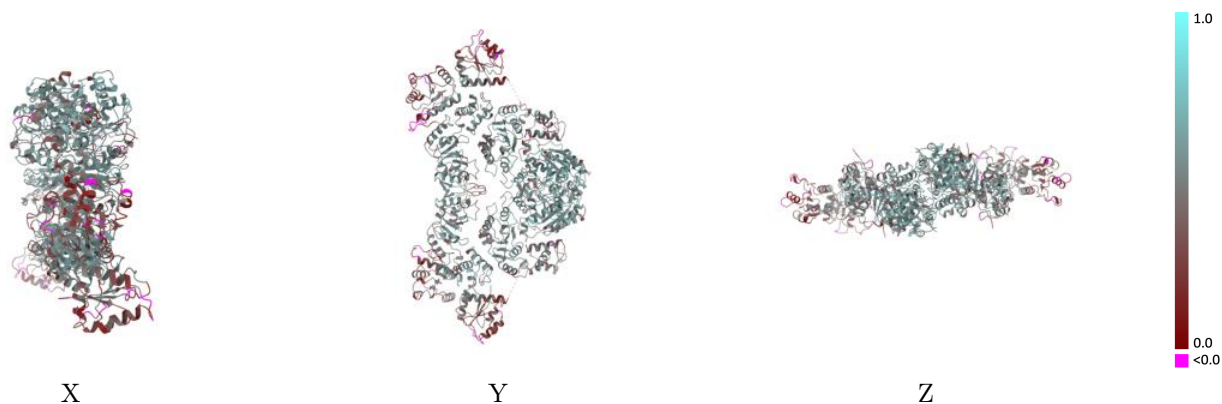
This section contains information regarding the fit between EMDB map EMD-17445 and PDB model 8P53. Per-residue inclusion information can be found in section 3 on page 8.

9.1 Map-model overlay [i](#)



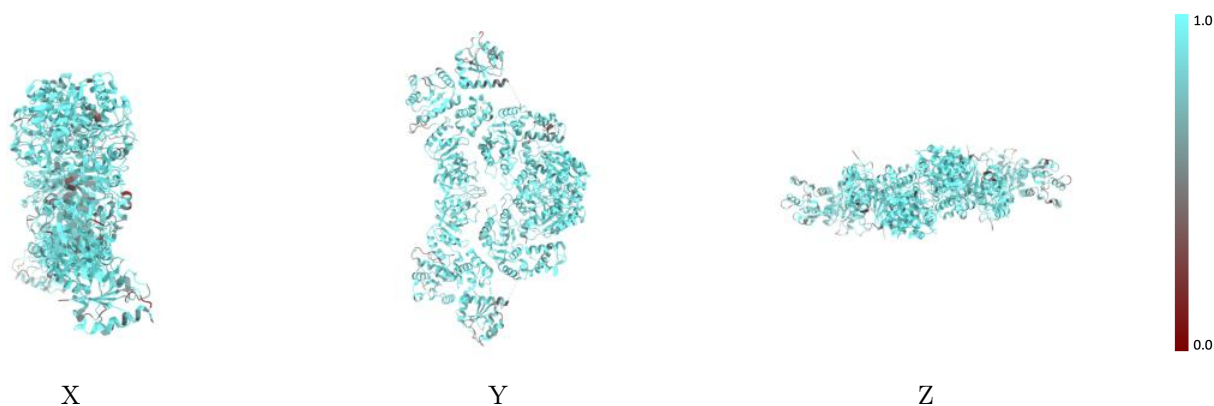
The images above show the 3D surface view of the map at the recommended contour level 0.028 at 50% transparency in yellow overlaid with a ribbon representation of the model coloured in blue. These images allow for the visual assessment of the quality of fit between the atomic model and the map.

9.2 Q-score mapped to coordinate model [i](#)



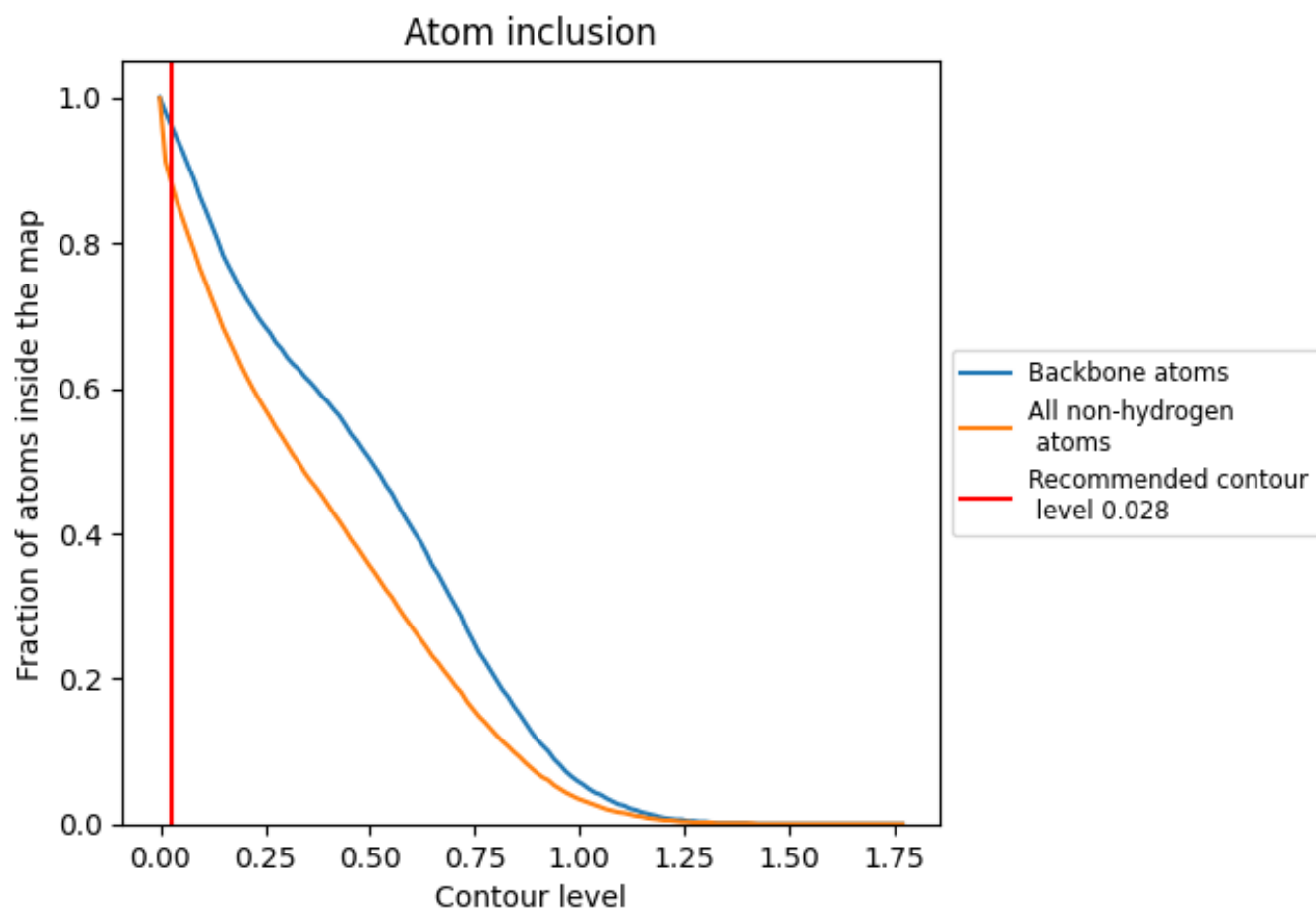
The images above show the model with each residue coloured according to its Q-score. This shows their resolvability in the map with higher Q-score values reflecting better resolvability. Please note: Q-score is calculating the resolvability of atoms, and thus high values are only expected at resolutions at which atoms can be resolved. Low Q-score values may therefore be expected for many entries.

9.3 Atom inclusion mapped to coordinate model [i](#)



The images above show the model with each residue coloured according to its atom inclusion. This shows to what extent they are inside the map at the recommended contour level (0.028).















9.4 Atom inclusion [i](#)



At the recommended contour level, 96% of all backbone atoms, 88% of all non-hydrogen atoms, are inside the map.

9.5 Map-model fit summary

The table lists the average atom inclusion at the recommended contour level (0.028) and Q-score for the entire model and for each chain.

Chain	Atom inclusion	Q-score
All	 0.8790	 0.4610
A	 0.9400	 0.5480
B	 0.9390	 0.5470
C	 0.8460	 0.4280
D	 0.8350	 0.4190
E	 0.8760	 0.4380
F	 0.8750	 0.4390

