



# wwPDB X-ray Structure Validation Summary Report ⓘ

Mar 17, 2026 – 11:26 PM UTC

PDB ID : 2PB0 / pdb\_00002pb0  
Title : Structure of biosynthetic N-acetylornithine aminotransferase from *Salmonella typhimurium*: studies on substrate specificity and inhibitor binding  
Authors : Rajaram, V.; Ratna Prasuna, P.; Savithri, H.S.; Murthy, M.R.N.  
Deposited on : 2007-03-28  
Resolution : 1.96 Å (reported)

This is a wwPDB X-ray Structure Validation Summary Report for a publicly released PDB entry.

We welcome your comments at [validation@mail.wwpdb.org](mailto:validation@mail.wwpdb.org)

A user guide is available at

<https://www.wwpdb.org/validation/2017/XrayValidationReportHelp>

with specific help available everywhere you see the ⓘ symbol.

The types of validation reports are described at

<http://www.wwpdb.org/validation/2017/FAQs#types>.

---

The following versions of software and data (see [references ⓘ](#)) were used in the production of this report:

MolProbity : 4-5-2 with Phenix2.0  
Mogul : 2022.3.0, CSD as543be (2022)  
Xtriage (Phenix) : 2.0  
EDS : 3.0  
Percentile statistics : 20250101.v01 (using entries in the PDB archive January 1st 2025)  
CCP4 : 9.0.010 (Gargrove)  
Density-Fitness : 1.0.12  
Ideal geometry (proteins) : Engh & Huber (2001)  
Ideal geometry (DNA, RNA) : Parkinson et al. (1996)  
Validation Pipeline (wwPDB-VP) : 2.49

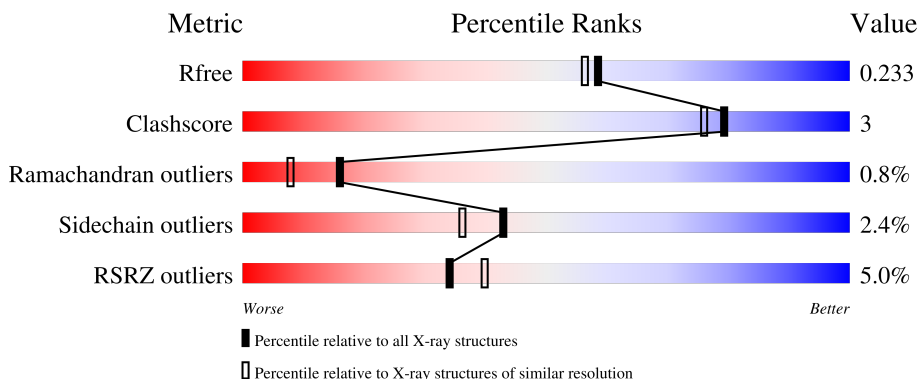
# 1 Overall quality at a glance

The following experimental techniques were used to determine the structure:

*X-RAY DIFFRACTION*

The reported resolution of this entry is 1.96 Å.

Percentile scores (ranging between 0-100) for global validation metrics of the entry are shown in the following graphic. The table shows the number of entries on which the scores are based.



Metric	Whole archive (#Entries)	Similar resolution (#Entries, resolution range(Å))
$R_{free}$	180053	3494 (1.96-1.96)
Clashscore	190562	3612 (1.96-1.96)
Ramachandran outliers	187476	3587 (1.96-1.96)
Sidechain outliers	187428	3587 (1.96-1.96)
RSRZ outliers	180081	3495 (1.96-1.96)

The table below summarises the geometric issues observed across the polymeric chains and their fit to the electron density. The red, orange, yellow and green segments of the lower bar indicate the fraction of residues that contain outliers for  $\geq 3$ , 2, 1 and 0 types of geometric quality criteria respectively. A grey segment represents the fraction of residues that are not modelled. The numeric value for each fraction is indicated below the corresponding segment, with a dot representing fractions  $\leq 5\%$ . The upper red bar (where present) indicates the fraction of residues that have poor fit to the electron density. The numeric value is given above the bar.

Mol	Chain	Length	Quality of chain
1	A	420	 4% 84% 8% • 7%
1	B	420	 5% 87% 5% • 8%

## 2 Entry composition [i](#)

There are 4 unique types of molecules in this entry. The entry contains 6472 atoms, of which 0 are hydrogens and 0 are deuteriums.

In the tables below, the ZeroOcc column contains the number of atoms modelled with zero occupancy, the AltConf column contains the number of residues with at least one atom in alternate conformation and the Trace column contains the number of residues modelled with at most 2 atoms.

- Molecule 1 is a protein called Acetylornithine/succinylidiaminopimelate aminotransferase.

Mol	Chain	Residues	Atoms					ZeroOcc	AltConf	Trace
			Total	C	N	O	S			
1	A	389	Total	C	N	O	S	0	3	0
			2943	1883	504	541	15			
1	B	387	Total	C	N	O	S	0	3	0
			2939	1877	508	539	15			

There are 30 discrepancies between the modelled and reference sequences:

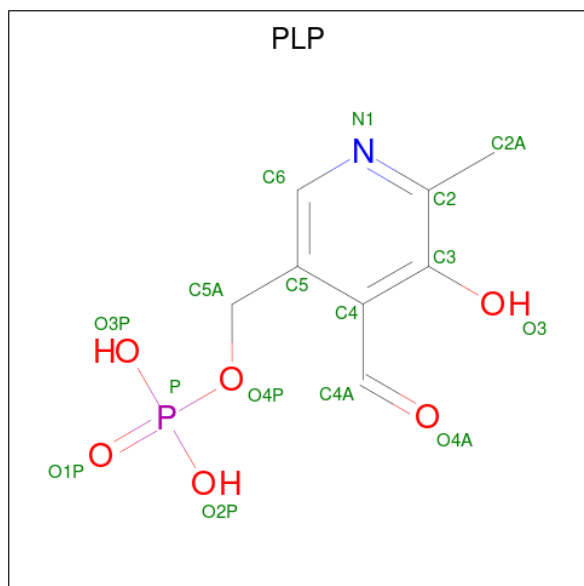
Chain	Residue	Modelled	Actual	Comment	Reference
A	-14	MET	-	expression tag	UNP P40732
A	-13	ARG	-	expression tag	UNP P40732
A	-12	GLY	-	expression tag	UNP P40732
A	-11	SER	-	expression tag	UNP P40732
A	-10	HIS	-	expression tag	UNP P40732
A	-9	HIS	-	expression tag	UNP P40732
A	-8	HIS	-	expression tag	UNP P40732
A	-7	HIS	-	expression tag	UNP P40732
A	-6	HIS	-	expression tag	UNP P40732
A	-5	HIS	-	expression tag	UNP P40732
A	-4	GLY	-	expression tag	UNP P40732
A	-3	MET	-	expression tag	UNP P40732
A	-2	ALA	-	expression tag	UNP P40732
A	-1	SER	-	expression tag	UNP P40732
A	0	HIS	-	expression tag	UNP P40732
B	-14	MET	-	expression tag	UNP P40732
B	-13	ARG	-	expression tag	UNP P40732
B	-12	GLY	-	expression tag	UNP P40732
B	-11	SER	-	expression tag	UNP P40732
B	-10	HIS	-	expression tag	UNP P40732
B	-9	HIS	-	expression tag	UNP P40732
B	-8	HIS	-	expression tag	UNP P40732
B	-7	HIS	-	expression tag	UNP P40732
B	-6	HIS	-	expression tag	UNP P40732
B	-5	HIS	-	expression tag	UNP P40732

*Continued on next page...*

Continued from previous page...

Chain	Residue	Modelled	Actual	Comment	Reference
B	-4	GLY	-	expression tag	UNP P40732
B	-3	MET	-	expression tag	UNP P40732
B	-2	ALA	-	expression tag	UNP P40732
B	-1	SER	-	expression tag	UNP P40732
B	0	HIS	-	expression tag	UNP P40732

- Molecule 2 is PYRIDOXAL-5'-PHOSPHATE (CCD ID: PLP) (formula: C<sub>8</sub>H<sub>10</sub>NO<sub>6</sub>P).



Mol	Chain	Residues	Atoms					ZeroOcc	AltConf
			Total	C	N	O	P		
2	A	1	Total	C	N	O	P	0	0
			15	8	1	5	1		
2	B	1	Total	C	N	O	P	0	0
			15	8	1	5	1		

- Molecule 3 is 1,2-ETHANEDIOL (CCD ID: EDO) (formula: C<sub>2</sub>H<sub>6</sub>O<sub>2</sub>).



Mol	Chain	Residues	Atoms	ZeroOcc	AltConf
3	A	1	Total C O 4 2 2	0	0
3	A	1	Total C O 4 2 2	0	0
3	B	1	Total C O 4 2 2	0	0
3	B	1	Total C O 4 2 2	0	0

- Molecule 4 is water.

Mol	Chain	Residues	Atoms	ZeroOcc	AltConf
4	A	281	Total O 281 281	0	0
4	B	263	Total O 263 263	0	0



## 4 Data and refinement statistics

Property	Value	Source
Space group	P 21 21 2	Depositor
Cell constants a, b, c, $\alpha$ , $\beta$ , $\gamma$	96.97Å 112.05Å 65.55Å 90.00° 90.00° 90.00°	Depositor
Resolution (Å)	29.59 – 1.96 29.59 – 1.96	Depositor EDS
% Data completeness (in resolution range)	98.4 (29.59-1.96) 98.4 (29.59-1.96)	Depositor EDS
$R_{merge}$	0.10	Depositor
$R_{sym}$	(Not available)	Depositor
$\langle I/\sigma(I) \rangle$ <sup>1</sup>	2.57 (at 1.96Å)	Xtrriage
Refinement program	REFMAC 5.2.0019	Depositor
R, $R_{free}$	0.197 , 0.234 0.195 , 0.233	Depositor DCC
$R_{free}$ test set	2610 reflections (5.01%)	wwPDB-VP
Wilson B-factor (Å <sup>2</sup> )	23.3	Xtrriage
Anisotropy	0.025	Xtrriage
Bulk solvent $k_{sol}$ (e/Å <sup>3</sup> ), $B_{sol}$ (Å <sup>2</sup> )	0.36 , 38.3	EDS
L-test for twinning <sup>2</sup>	$\langle  L  \rangle = 0.49$ , $\langle L^2 \rangle = 0.32$	Xtrriage
Estimated twinning fraction	No twinning to report.	Xtrriage
$F_o, F_c$ correlation	0.95	EDS
Total number of atoms	6472	wwPDB-VP
Average B, all atoms (Å <sup>2</sup> )	20.0	wwPDB-VP

Xtrriage's analysis on translational NCS is as follows: *The largest off-origin peak in the Patterson function is 4.49% of the height of the origin peak. No significant pseudotranslation is detected.*

<sup>1</sup>Intensities estimated from amplitudes.

<sup>2</sup>Theoretical values of  $\langle |L| \rangle$ ,  $\langle L^2 \rangle$  for acentric reflections are 0.5, 0.333 respectively for untwinned datasets, and 0.375, 0.2 for perfectly twinned datasets.

## 5 Model quality [i](#)

### 5.1 Standard geometry [i](#)

Bond lengths and bond angles in the following residue types are not validated in this section: EDO, PLP

The Z score for a bond length (or angle) is the number of standard deviations the observed value is removed from the expected value. A bond length (or angle) with  $|Z| > 5$  is considered an outlier worth inspection. RMSZ is the root-mean-square of all Z scores of the bond lengths (or angles).

Mol	Chain	Bond lengths		Bond angles	
		RMSZ	# Z  >5	RMSZ	# Z  >5
1	A	0.46	0/3020	0.79	0/4095
1	B	0.46	0/3019	0.77	1/4094 (0.0%)
All	All	0.46	0/6039	0.78	1/8189 (0.0%)

There are no bond length outliers.

All (1) bond angle outliers are listed below:

Mol	Chain	Res	Type	Atoms	Z	Observed(°)	Ideal(°)
1	B	283	SER	N-CA-C	5.63	117.83	108.99

There are no chirality outliers.

There are no planarity outliers.

### 5.2 Too-close contacts [i](#)

In the following table, the Non-H and H(model) columns list the number of non-hydrogen atoms and hydrogen atoms in the chain respectively. The H(added) column lists the number of hydrogen atoms added and optimized by MolProbity. The Clashes column lists the number of clashes within the asymmetric unit, whereas Symm-Clashes lists symmetry-related clashes.

Mol	Chain	Non-H	H(model)	H(added)	Clashes	Symm-Clashes
1	A	2943	0	2869	23	0
1	B	2939	0	2870	13	0
2	A	15	0	6	1	0
2	B	15	0	6	0	0
3	A	8	0	12	2	0
3	B	8	0	12	1	0
4	A	281	0	0	0	0
4	B	263	0	0	0	0

*Continued on next page...*

*Continued from previous page...*

Mol	Chain	Non-H	H(model)	H(added)	Clashes	Symm-Clashes
All	All	6472	0	5775	32	0

The all-atom clashscore is defined as the number of clashes found per 1000 atoms (including hydrogen atoms). The all-atom clashscore for this structure is 3.

The worst 5 of 32 close contacts within the same asymmetric unit are listed below, sorted by their clash magnitude.

Atom-1	Atom-2	Interatomic distance (Å)	Clash overlap (Å)
1:A:354:ALA:HA	1:A:376:MET:HE1	1.49	0.91
1:A:346:LEU:HD11	1:A:376:MET:HE2	1.77	0.67
1:A:354:ALA:HA	1:A:376:MET:CE	2.23	0.67
1:B:281:HIS:CD2	1:B:282:GLY:HA3	2.31	0.66
1:A:44:TYR:CB	1:A:367:MET:HE2	2.26	0.64

There are no symmetry-related clashes.

## 5.3 Torsion angles [i](#)

### 5.3.1 Protein backbone [i](#)

In the following table, the Percentiles column shows the percent Ramachandran outliers of the chain as a percentile score with respect to all X-ray entries followed by that with respect to entries of similar resolution.

The Analysed column shows the number of residues for which the backbone conformation was analysed, and the total number of residues.

Mol	Chain	Analysed	Favoured	Allowed	Outliers	Percentiles	
1	A	388/420 (92%)	375 (97%)	10 (3%)	3 (1%)	16	8
1	B	388/420 (92%)	373 (96%)	12 (3%)	3 (1%)	16	8
All	All	776/840 (92%)	748 (96%)	22 (3%)	6 (1%)	16	8

5 of 6 Ramachandran outliers are listed below:

Mol	Chain	Res	Type
1	A	255	LYS
1	B	255	LYS
1	B	282	GLY
1	A	262	PRO

*Continued on next page...*

*Continued from previous page...*

Mol	Chain	Res	Type
1	A	51	ILE

### 5.3.2 Protein sidechains [i](#)

In the following table, the Percentiles column shows the percent sidechain outliers of the chain as a percentile score with respect to all X-ray entries followed by that with respect to entries of similar resolution.

The Analysed column shows the number of residues for which the sidechain conformation was analysed, and the total number of residues.

Mol	Chain	Analysed	Rotameric	Outliers	Percentiles	
1	A	296/327 (90%)	287 (97%)	9 (3%)	36	27
1	B	298/327 (91%)	293 (98%)	5 (2%)	53	49
All	All	594/654 (91%)	580 (98%)	14 (2%)	43	36

5 of 14 residues with a non-rotameric sidechain are listed below:

Mol	Chain	Res	Type
1	A	331	ILE
1	A	341	LEU
1	B	363	GLU
1	B	281	HIS
1	B	341	LEU

Sometimes sidechains can be flipped to improve hydrogen bonding and reduce clashes. 5 of 11 such sidechains are listed below:

Mol	Chain	Res	Type
1	B	70	GLN
1	B	79	ASN
1	B	277	HIS
1	B	196	GLN
1	A	316	GLN

### 5.3.3 RNA [i](#)

There are no RNA molecules in this entry.

## 5.4 Non-standard residues in protein, DNA, RNA chains [i](#)

There are no non-standard protein/DNA/RNA residues in this entry.

## 5.5 Carbohydrates [i](#)

There are no oligosaccharides in this entry.

## 5.6 Ligand geometry [i](#)

6 ligands are modelled in this entry.

In the following table, the Counts columns list the number of bonds (or angles) for which Mogul statistics could be retrieved, the number of bonds (or angles) that are observed in the model and the number of bonds (or angles) that are defined in the Chemical Component Dictionary. The Link column lists molecule types, if any, to which the group is linked. The Z score for a bond length (or angle) is the number of standard deviations the observed value is removed from the expected value. A bond length (or angle) with  $|Z| > 2$  is considered an outlier worth inspection. RMSZ is the root-mean-square of all Z scores of the bond lengths (or angles).

Mol	Type	Chain	Res	Link	Bond lengths			Bond angles		
					Counts	RMSZ	# Z  > 2	Counts	RMSZ	# Z  > 2
2	PLP	A	555	1	15,15,16	1.89	3 (20%)	21,22,23	1.73	3 (14%)
3	EDO	B	1003	-	3,3,3	0.40	0	2,2,2	0.39	0
2	PLP	B	555	1	15,15,16	1.91	3 (20%)	21,22,23	1.70	3 (14%)
3	EDO	B	1001	-	3,3,3	0.41	0	2,2,2	0.37	0
3	EDO	A	1004	-	3,3,3	0.42	0	2,2,2	0.31	0
3	EDO	A	1002	-	3,3,3	0.44	0	2,2,2	0.38	0

In the following table, the Chirals column lists the number of chiral outliers, the number of chiral centers analysed, the number of these observed in the model and the number defined in the Chemical Component Dictionary. Similar counts are reported in the Torsion and Rings columns. '-' means no outliers of that kind were identified.

Mol	Type	Chain	Res	Link	Chirals	Torsions	Rings
2	PLP	A	555	1	-	1/6/6/8	0/1/1/1
3	EDO	B	1003	-	-	1/1/1/1	-
2	PLP	B	555	1	-	0/6/6/8	0/1/1/1
3	EDO	B	1001	-	-	1/1/1/1	-
3	EDO	A	1004	-	-	1/1/1/1	-
3	EDO	A	1002	-	-	0/1/1/1	-

The worst 5 of 6 bond length outliers are listed below:

Mol	Chain	Res	Type	Atoms	Z	Observed(Å)	Ideal(Å)
2	B	555	PLP	O3-C3	-5.82	1.23	1.36
2	A	555	PLP	O3-C3	-5.77	1.23	1.36
2	A	555	PLP	C2-N1	2.71	1.38	1.33
2	B	555	PLP	C2-N1	2.70	1.38	1.33
2	B	555	PLP	C6-N1	2.23	1.39	1.34

The worst 5 of 6 bond angle outliers are listed below:

Mol	Chain	Res	Type	Atoms	Z	Observed(°)	Ideal(°)
2	A	555	PLP	O4P-C5A-C5	6.29	121.14	109.36
2	B	555	PLP	O4P-C5A-C5	6.20	120.98	109.36
2	A	555	PLP	C6-C5-C4	2.56	120.20	118.10
2	A	555	PLP	C5-C6-N1	-2.22	120.22	123.83
2	B	555	PLP	C6-C5-C4	2.18	119.88	118.10

There are no chirality outliers.

All (4) torsion outliers are listed below:

Mol	Chain	Res	Type	Atoms
3	A	1004	EDO	O1-C1-C2-O2
3	B	1003	EDO	O1-C1-C2-O2
3	B	1001	EDO	O1-C1-C2-O2
2	A	555	PLP	C5A-O4P-P-O3P

There are no ring outliers.

4 monomers are involved in 4 short contacts:

Mol	Chain	Res	Type	Clashes	Symm-Clashes
2	A	555	PLP	1	0
3	B	1001	EDO	1	0
3	A	1004	EDO	1	0
3	A	1002	EDO	1	0

## 5.7 Other polymers [i](#)

There are no such residues in this entry.

## 5.8 Polymer linkage issues [i](#)

There are no chain breaks in this entry.

## 6 Fit of model and data [i](#)

### 6.1 Protein, DNA and RNA chains [i](#)

In the following table, the column labelled ‘#RSRZ > 2’ contains the number (and percentage) of RSRZ outliers, followed by percent RSRZ outliers for the chain as percentile scores relative to all X-ray entries and entries of similar resolution. The OWAB column contains the minimum, median, 95<sup>th</sup> percentile and maximum values of the occupancy-weighted average B-factor per residue. The column labelled ‘Q < 0.9’ lists the number of (and percentage) of residues with an average occupancy less than 0.9.

Mol	Chain	Analysed	<RSRZ>	#RSRZ>2	OWAB(Å <sup>2</sup> )	Q<0.9
1	A	389/420 (92%)	0.07	18 (4%) 37 43	10, 18, 29, 44	3 (0%)
1	B	387/420 (92%)	0.09	21 (5%) 31 37	11, 18, 29, 43	3 (0%)
All	All	776/840 (92%)	0.08	39 (5%) 34 40	10, 18, 29, 44	6 (0%)

The worst 5 of 39 RSRZ outliers are listed below:

Mol	Chain	Res	Type	RSRZ
1	A	17	ILE	5.6
1	B	286	GLY	5.4
1	A	18	LEU	5.1
1	B	281	HIS	4.6
1	B	282	GLY	4.5

### 6.2 Non-standard residues in protein, DNA, RNA chains [i](#)

There are no non-standard protein/DNA/RNA residues in this entry.

### 6.3 Carbohydrates [i](#)

There are no oligosaccharides in this entry.

### 6.4 Ligands [i](#)

In the following table, the Atoms column lists the number of modelled atoms in the group and the number defined in the chemical component dictionary. The B-factors column lists the minimum, median, 95<sup>th</sup> percentile and maximum values of B factors of atoms in the group. The column labelled ‘Q < 0.9’ lists the number of atoms with occupancy less than 0.9.

Mol	Type	Chain	Res	Atoms	RSCC	RSR	B-factors( $\text{\AA}^2$ )	Q<0.9
2	PLP	B	555	15/16	0.74	0.20	17,18,19,19	15
3	EDO	A	1004	4/4	0.84	0.14	41,41,41,41	0
2	PLP	A	555	15/16	0.87	0.11	26,27,29,29	0
3	EDO	B	1003	4/4	0.87	0.14	35,36,36,36	0
3	EDO	A	1002	4/4	0.88	0.08	17,17,17,17	0
3	EDO	B	1001	4/4	0.90	0.09	19,20,20,20	0

## 6.5 Other polymers [i](#)

There are no such residues in this entry.