



wwPDB EM Validation Summary Report ⓘ

Mar 8, 2026 – 02:05 AM UTC

PDB ID : 8PDN / pdb_00008pdn
EMDB ID : EMD-17615
Title : Spiral of assembled human metapneumovirus (HMPV) N-RNA
Authors : Whitehead, J.D.; Decool, H.; Leyrat, C.; Carrique, L.; Fix, J.; Eleouet, J.F.;
Galloux, M.; Renner, M.
Deposited on : 2023-06-12
Resolution : 4.70 Å(reported)

This is a wwPDB EM Validation Summary Report for a publicly released PDB entry.

We welcome your comments at validation@mail.wwpdb.org

A user guide is available at

<https://www.wwpdb.org/validation/2017/EMValidationReportHelp>

with specific help available everywhere you see the ⓘ symbol.

The types of validation reports are described at

<http://www.wwpdb.org/validation/2017/FAQs#types>.

The following versions of software and data (see [references ⓘ](#)) were used in the production of this report:

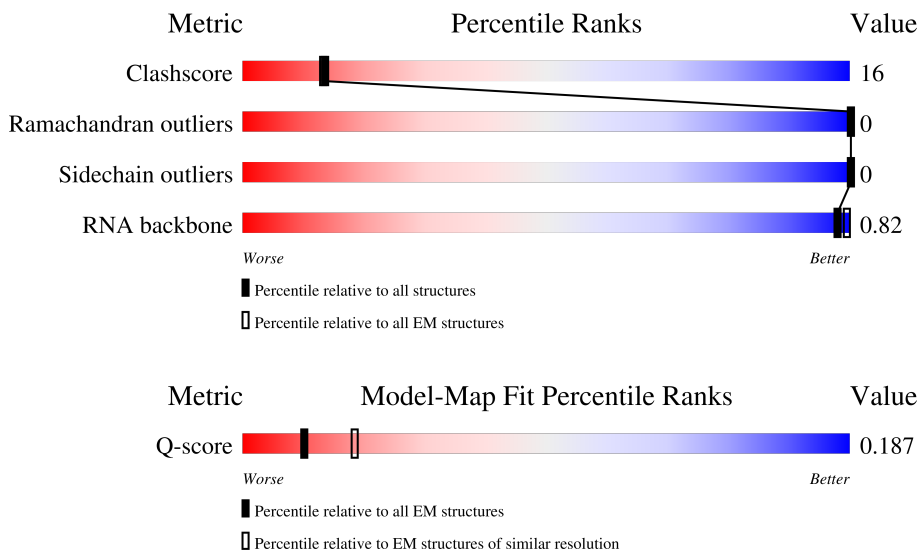
EMDB validation analysis : 0.0.1.dev132
MolProbity : 4-5-2 with Phenix2.0
Percentile statistics : 20250101.v01 (using entries in the PDB archive January 1st 2025)
EM percentile statistics : 202505.v01 (Using data in the EMDB archive up until May 2025)
MapQ : 1.9.13
Ideal geometry (proteins) : Engh & Huber (2001)
Ideal geometry (DNA, RNA) : Parkinson et al. (1996)
Validation Pipeline (wwPDB-VP) : 2.49

1 Overall quality at a glance i

The following experimental techniques were used to determine the structure:
ELECTRON MICROSCOPY

The reported resolution of this entry is 4.70 Å.

Percentile scores (ranging between 0-100) for global validation metrics of the entry are shown in the following graphic. The table shows the number of entries on which the scores are based.



Metric	Whole archive (#Entries)	EM structures (#Entries)	Similar EM resolution (#Entries, resolution range(Å))
Clashscore	229148	23984	-
Ramachandran outliers	224038	23583	-
Sidechain outliers	223484	23102	-
RNA backbone	8273	3508	-
Q-score	-	25397	1989 (4.20 - 5.20)

The table below summarises the geometric issues observed across the polymeric chains and their fit to the map. The red, orange, yellow and green segments of the bar indicate the fraction of residues that contain outliers for ≥ 3 , 2, 1 and 0 types of geometric quality criteria respectively. A grey segment represents the fraction of residues that are not modelled. The numeric value for each fraction is indicated below the corresponding segment, with a dot representing fractions $\leq 5\%$. The upper red bar (where present) indicates the fraction of residues that have poor fit to the EM map (all-atom inclusion $< 40\%$). The numeric value is given above the bar.

Mol	Chain	Length	Quality of chain
1	A	401	<p>29% 66% 18% 15%</p>
1	B	401	<p>14% 65% 19% 15%</p>
1	C	401	<p>9% 66% 19% 15%</p>

Continued on next page...

Continued from previous page...

Mol	Chain	Length	Quality of chain
1	D	401	 8% 67% 17% 15%
1	E	401	 6% 66% 19% 15%
1	F	401	 5% 68% 16% 15%
1	G	401	 7% 68% 17% 15%
1	H	401	 9% 67% 18% 15%
1	I	401	 10% 67% 17% 15%
1	J	401	 14% 67% 18% 15%
1	K	401	 17% 66% 18% 15%
1	L	401	 30% 69% 15% 15%
2	a	7	 71% 29%
2	b	7	 57% 43%
2	c	7	 57% 43%
2	d	7	 43% 57%
2	e	7	 43% 57%
2	f	7	 57% 43%
2	g	7	 57% 43%
2	h	7	 57% 43%
2	i	7	 57% 43%
2	j	7	 57% 43%
2	k	7	 57% 43%
2	l	7	 57% 43%

2 Entry composition i

There are 2 unique types of molecules in this entry. The entry contains 33228 atoms, of which 0 are hydrogens and 0 are deuteriums.

In the tables below, the AltConf column contains the number of residues with at least one atom in alternate conformation and the Trace column contains the number of residues modelled with at most 2 atoms.

- Molecule 1 is a protein called Nucleoprotein.

Mol	Chain	Residues	Atoms					AltConf	Trace
			Total	C	N	O	S		
1	A	339	2629	1662	456	500	11	0	0
1	B	339	2629	1662	456	500	11	0	0
1	C	339	2629	1662	456	500	11	0	0
1	D	339	2629	1662	456	500	11	0	0
1	E	339	2629	1662	456	500	11	0	0
1	F	339	2629	1662	456	500	11	0	0
1	G	339	2629	1662	456	500	11	0	0
1	H	339	2629	1662	456	500	11	0	0
1	I	339	2629	1662	456	500	11	0	0
1	J	339	2629	1662	456	500	11	0	0
1	K	339	2629	1662	456	500	11	0	0
1	L	339	2629	1662	456	500	11	0	0

There are 108 discrepancies between the modelled and reference sequences:

Chain	Residue	Modelled	Actual	Comment	Reference
A	103	ILE	VAL	variant	UNP Q6WBA1
A	220	HIS	TYR	variant	UNP Q6WBA1
A	395	LYS	-	expression tag	UNP Q6WBA1
A	396	HIS	-	expression tag	UNP Q6WBA1
A	397	HIS	-	expression tag	UNP Q6WBA1
A	398	HIS	-	expression tag	UNP Q6WBA1

Continued on next page...

Continued from previous page...

Chain	Residue	Modelled	Actual	Comment	Reference
A	399	HIS	-	expression tag	UNP Q6WBA1
A	400	HIS	-	expression tag	UNP Q6WBA1
A	401	HIS	-	expression tag	UNP Q6WBA1
B	103	ILE	VAL	variant	UNP Q6WBA1
B	220	HIS	TYR	variant	UNP Q6WBA1
B	395	LYS	-	expression tag	UNP Q6WBA1
B	396	HIS	-	expression tag	UNP Q6WBA1
B	397	HIS	-	expression tag	UNP Q6WBA1
B	398	HIS	-	expression tag	UNP Q6WBA1
B	399	HIS	-	expression tag	UNP Q6WBA1
B	400	HIS	-	expression tag	UNP Q6WBA1
B	401	HIS	-	expression tag	UNP Q6WBA1
C	103	ILE	VAL	variant	UNP Q6WBA1
C	220	HIS	TYR	variant	UNP Q6WBA1
C	395	LYS	-	expression tag	UNP Q6WBA1
C	396	HIS	-	expression tag	UNP Q6WBA1
C	397	HIS	-	expression tag	UNP Q6WBA1
C	398	HIS	-	expression tag	UNP Q6WBA1
C	399	HIS	-	expression tag	UNP Q6WBA1
C	400	HIS	-	expression tag	UNP Q6WBA1
C	401	HIS	-	expression tag	UNP Q6WBA1
D	103	ILE	VAL	variant	UNP Q6WBA1
D	220	HIS	TYR	variant	UNP Q6WBA1
D	395	LYS	-	expression tag	UNP Q6WBA1
D	396	HIS	-	expression tag	UNP Q6WBA1
D	397	HIS	-	expression tag	UNP Q6WBA1
D	398	HIS	-	expression tag	UNP Q6WBA1
D	399	HIS	-	expression tag	UNP Q6WBA1
D	400	HIS	-	expression tag	UNP Q6WBA1
D	401	HIS	-	expression tag	UNP Q6WBA1
E	103	ILE	VAL	variant	UNP Q6WBA1
E	220	HIS	TYR	variant	UNP Q6WBA1
E	395	LYS	-	expression tag	UNP Q6WBA1
E	396	HIS	-	expression tag	UNP Q6WBA1
E	397	HIS	-	expression tag	UNP Q6WBA1
E	398	HIS	-	expression tag	UNP Q6WBA1
E	399	HIS	-	expression tag	UNP Q6WBA1
E	400	HIS	-	expression tag	UNP Q6WBA1
E	401	HIS	-	expression tag	UNP Q6WBA1
F	103	ILE	VAL	variant	UNP Q6WBA1
F	220	HIS	TYR	variant	UNP Q6WBA1
F	395	LYS	-	expression tag	UNP Q6WBA1

Continued on next page...

Continued from previous page...

Chain	Residue	Modelled	Actual	Comment	Reference
F	396	HIS	-	expression tag	UNP Q6WBA1
F	397	HIS	-	expression tag	UNP Q6WBA1
F	398	HIS	-	expression tag	UNP Q6WBA1
F	399	HIS	-	expression tag	UNP Q6WBA1
F	400	HIS	-	expression tag	UNP Q6WBA1
F	401	HIS	-	expression tag	UNP Q6WBA1
G	103	ILE	VAL	variant	UNP Q6WBA1
G	220	HIS	TYR	variant	UNP Q6WBA1
G	395	LYS	-	expression tag	UNP Q6WBA1
G	396	HIS	-	expression tag	UNP Q6WBA1
G	397	HIS	-	expression tag	UNP Q6WBA1
G	398	HIS	-	expression tag	UNP Q6WBA1
G	399	HIS	-	expression tag	UNP Q6WBA1
G	400	HIS	-	expression tag	UNP Q6WBA1
G	401	HIS	-	expression tag	UNP Q6WBA1
H	103	ILE	VAL	variant	UNP Q6WBA1
H	220	HIS	TYR	variant	UNP Q6WBA1
H	395	LYS	-	expression tag	UNP Q6WBA1
H	396	HIS	-	expression tag	UNP Q6WBA1
H	397	HIS	-	expression tag	UNP Q6WBA1
H	398	HIS	-	expression tag	UNP Q6WBA1
H	399	HIS	-	expression tag	UNP Q6WBA1
H	400	HIS	-	expression tag	UNP Q6WBA1
H	401	HIS	-	expression tag	UNP Q6WBA1
I	103	ILE	VAL	variant	UNP Q6WBA1
I	220	HIS	TYR	variant	UNP Q6WBA1
I	395	LYS	-	expression tag	UNP Q6WBA1
I	396	HIS	-	expression tag	UNP Q6WBA1
I	397	HIS	-	expression tag	UNP Q6WBA1
I	398	HIS	-	expression tag	UNP Q6WBA1
I	399	HIS	-	expression tag	UNP Q6WBA1
I	400	HIS	-	expression tag	UNP Q6WBA1
I	401	HIS	-	expression tag	UNP Q6WBA1
J	103	ILE	VAL	variant	UNP Q6WBA1
J	220	HIS	TYR	variant	UNP Q6WBA1
J	395	LYS	-	expression tag	UNP Q6WBA1
J	396	HIS	-	expression tag	UNP Q6WBA1
J	397	HIS	-	expression tag	UNP Q6WBA1
J	398	HIS	-	expression tag	UNP Q6WBA1
J	399	HIS	-	expression tag	UNP Q6WBA1
J	400	HIS	-	expression tag	UNP Q6WBA1
J	401	HIS	-	expression tag	UNP Q6WBA1

Continued on next page...

Continued from previous page...

Chain	Residue	Modelled	Actual	Comment	Reference
K	103	ILE	VAL	variant	UNP Q6WBA1
K	220	HIS	TYR	variant	UNP Q6WBA1
K	395	LYS	-	expression tag	UNP Q6WBA1
K	396	HIS	-	expression tag	UNP Q6WBA1
K	397	HIS	-	expression tag	UNP Q6WBA1
K	398	HIS	-	expression tag	UNP Q6WBA1
K	399	HIS	-	expression tag	UNP Q6WBA1
K	400	HIS	-	expression tag	UNP Q6WBA1
K	401	HIS	-	expression tag	UNP Q6WBA1
L	103	ILE	VAL	variant	UNP Q6WBA1
L	220	HIS	TYR	variant	UNP Q6WBA1
L	395	LYS	-	expression tag	UNP Q6WBA1
L	396	HIS	-	expression tag	UNP Q6WBA1
L	397	HIS	-	expression tag	UNP Q6WBA1
L	398	HIS	-	expression tag	UNP Q6WBA1
L	399	HIS	-	expression tag	UNP Q6WBA1
L	400	HIS	-	expression tag	UNP Q6WBA1
L	401	HIS	-	expression tag	UNP Q6WBA1

- Molecule 2 is a RNA chain called RNA.

Mol	Chain	Residues	Atoms					AltConf	Trace
2	a	7	Total	C	N	O	P	0	0
			140	63	21	49	7		
2	b	7	Total	C	N	O	P	0	0
			140	63	21	49	7		
2	c	7	Total	C	N	O	P	0	0
			140	63	21	49	7		
2	d	7	Total	C	N	O	P	0	0
			140	63	21	49	7		
2	e	7	Total	C	N	O	P	0	0
			140	63	21	49	7		
2	f	7	Total	C	N	O	P	0	0
			140	63	21	49	7		
2	g	7	Total	C	N	O	P	0	0
			140	63	21	49	7		
2	h	7	Total	C	N	O	P	0	0
			140	63	21	49	7		
2	i	7	Total	C	N	O	P	0	0
			140	63	21	49	7		
2	j	7	Total	C	N	O	P	0	0
			140	63	21	49	7		

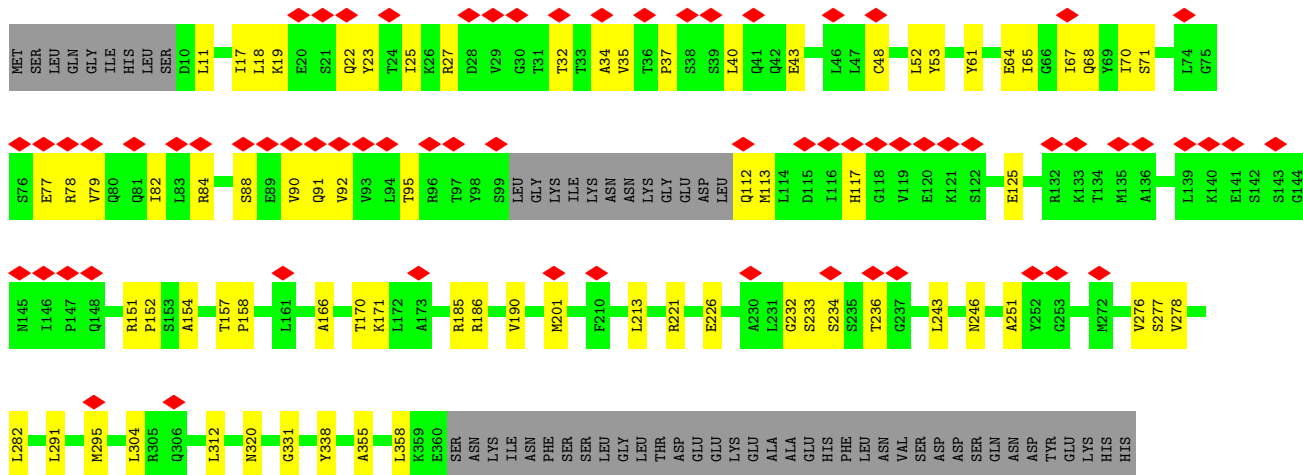
Continued on next page...

Continued from previous page...

Mol	Chain	Residues	Atoms					AltConf	Trace
2	k	7	Total	C	N	O	P	0	0
			140	63	21	49	7		
2	l	7	Total	C	N	O	P	0	0
			140	63	21	49	7		

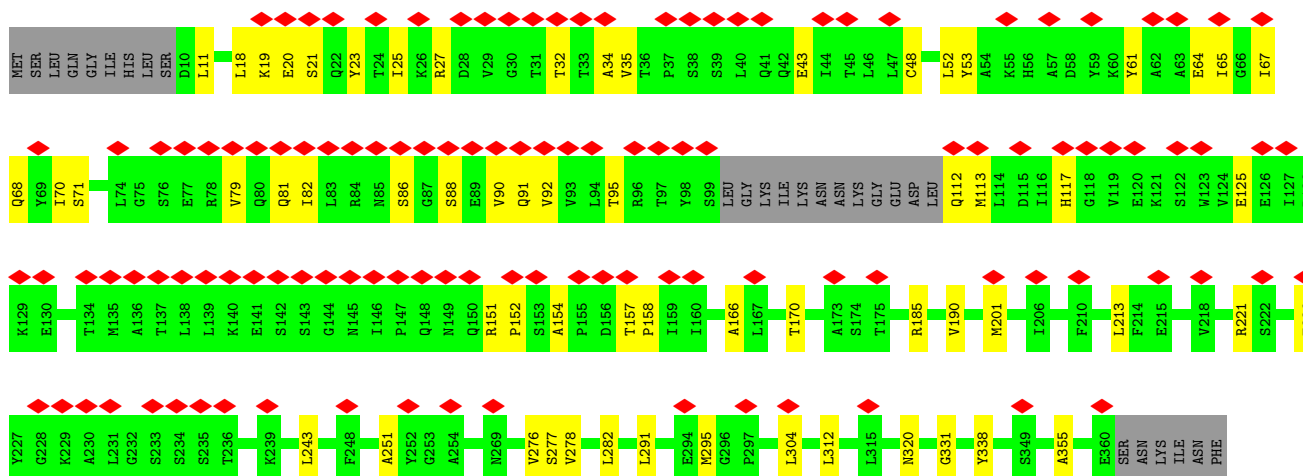
HIS
HIS

• Molecule 1: Nucleoprotein

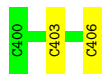


HIS
HIS
HIS
HIS

• Molecule 1: Nucleoprotein



• Molecule 2: RNA



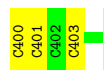
● Molecule 2: RNA

Chain b:  57% 43%

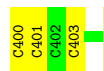
● Molecule 2: RNA

Chain c:  57% 43%

● Molecule 2: RNA

Chain d:  43% 57%

● Molecule 2: RNA

Chain e:  43% 57%

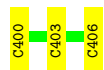
● Molecule 2: RNA

Chain f:  57% 43%

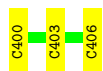
● Molecule 2: RNA

Chain g:  57% 43%

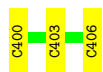
● Molecule 2: RNA

Chain h:  57% 43%

● Molecule 2: RNA



● Molecule 2: RNA



● Molecule 2: RNA



● Molecule 2: RNA



4 Experimental information

Property	Value	Source
EM reconstruction method	SINGLE PARTICLE	Depositor
Imposed symmetry	POINT, C1	Depositor
Number of particles used	101868	Depositor
Resolution determination method	FSC 0.143 CUT-OFF	Depositor
CTF correction method	PHASE FLIPPING AND AMPLITUDE CORRECTION	Depositor
Microscope	TFS KRIOS	Depositor
Voltage (kV)	300	Depositor
Electron dose ($e^-/\text{\AA}^2$)	44.2	Depositor
Minimum defocus (nm)	1000	Depositor
Maximum defocus (nm)	2600	Depositor
Magnification	Not provided	
Image detector	GATAN K2 SUMMIT (4k x 4k)	Depositor
Maximum map value	1.270	Depositor
Minimum map value	-0.765	Depositor
Average map value	0.001	Depositor
Map value standard deviation	0.043	Depositor
Recommended contour level	0.25	Depositor
Map size (Å)	419.99997, 419.99997, 419.99997	wwPDB
Map dimensions	400, 400, 400	wwPDB
Map angles (°)	90.0, 90.0, 90.0	wwPDB
Pixel spacing (Å)	1.05, 1.05, 1.05	Depositor

5 Model quality

5.1 Standard geometry

The Z score for a bond length (or angle) is the number of standard deviations the observed value is removed from the expected value. A bond length (or angle) with $|Z| > 5$ is considered an outlier worth inspection. RMSZ is the root-mean-square of all Z scores of the bond lengths (or angles).

Mol	Chain	Bond lengths		Bond angles	
		RMSZ	# Z >5	RMSZ	# Z >5
1	A	0.29	0/2671	0.42	0/3608
1	B	0.29	0/2671	0.42	0/3608
1	C	0.29	0/2671	0.42	0/3608
1	D	0.29	0/2671	0.42	0/3608
1	E	0.29	0/2671	0.42	0/3608
1	F	0.29	0/2671	0.42	0/3608
1	G	0.29	0/2671	0.42	0/3608
1	H	0.29	0/2671	0.42	0/3608
1	I	0.29	0/2671	0.42	0/3608
1	J	0.29	0/2671	0.42	0/3608
1	K	0.29	0/2671	0.42	0/3608
1	L	0.29	0/2671	0.42	0/3608
2	a	0.29	0/153	0.32	0/234
2	b	0.29	0/153	0.32	0/234
2	c	0.29	0/153	0.32	0/234
2	d	0.29	0/153	0.32	0/234
2	e	0.29	0/153	0.31	0/234
2	f	0.29	0/153	0.31	0/234
2	g	0.29	0/153	0.32	0/234
2	h	0.29	0/153	0.32	0/234
2	i	0.29	0/153	0.32	0/234
2	j	0.29	0/153	0.31	0/234
2	k	0.28	0/153	0.32	0/234
2	l	0.28	0/153	0.32	0/234
All	All	0.29	0/33888	0.42	0/46104

There are no bond length outliers.

There are no bond angle outliers.

There are no chirality outliers.

There are no planarity outliers.

5.2 Too-close contacts

In the following table, the Non-H and H(model) columns list the number of non-hydrogen atoms and hydrogen atoms in the chain respectively. The H(added) column lists the number of hydrogen atoms added and optimized by MolProbity. The Clashes column lists the number of clashes within the asymmetric unit, whereas Symm-Clashes lists symmetry-related clashes.

Mol	Chain	Non-H	H(model)	H(added)	Clashes	Symm-Clashes
1	A	2629	0	2681	131	0
1	B	2629	0	2681	159	0
1	C	2629	0	2680	154	0
1	D	2629	0	2681	119	0
1	E	2629	0	2679	129	0
1	F	2629	0	2680	101	0
1	G	2629	0	2680	96	0
1	H	2629	0	2680	108	0
1	I	2629	0	2681	99	0
1	J	2629	0	2681	110	0
1	K	2629	0	2681	92	0
1	L	2629	0	2678	51	0
2	a	140	0	78	2	0
2	b	140	0	78	35	0
2	c	140	0	78	18	0
2	d	140	0	78	25	0
2	e	140	0	78	48	0
2	f	140	0	78	28	0
2	g	140	0	78	31	0
2	h	140	0	78	26	0
2	i	140	0	78	36	0
2	j	140	0	78	36	0
2	k	140	0	78	41	0
2	l	140	0	78	16	0
All	All	33228	0	33099	1058	0

The all-atom clashscore is defined as the number of clashes found per 1000 atoms (including hydrogen atoms). The all-atom clashscore for this structure is 16.

The worst 5 of 1058 close contacts within the same asymmetric unit are listed below, sorted by their clash magnitude.

Atom-1	Atom-2	Interatomic distance (Å)	Clash overlap (Å)
1:C:243:LEU:HD13	2:e:400:C:C6	1.35	1.61
1:A:243:LEU:CD1	2:b:400:C:C1'	1.81	1.53
1:J:243:LEU:HD13	2:k:400:C:C2	1.47	1.49

Continued on next page...

Continued from previous page...

Atom-1	Atom-2	Interatomic distance (Å)	Clash overlap (Å)
1:B:243:LEU:HD13	2:d:400:C:C6	1.42	1.48
1:B:78:ARG:NH2	1:D:23:TYR:CE2	1.81	1.47

There are no symmetry-related clashes.

5.3 Torsion angles [i](#)

5.3.1 Protein backbone [i](#)

In the following table, the Percentiles column shows the percent Ramachandran outliers of the chain as a percentile score with respect to all PDB entries followed by that with respect to all EM entries.

The Analysed column shows the number of residues for which the backbone conformation was analysed, and the total number of residues.

Mol	Chain	Analysed	Favoured	Allowed	Outliers	Percentiles	
1	A	335/401 (84%)	330 (98%)	5 (2%)	0	100	100
1	B	335/401 (84%)	330 (98%)	5 (2%)	0	100	100
1	C	335/401 (84%)	330 (98%)	5 (2%)	0	100	100
1	D	335/401 (84%)	330 (98%)	5 (2%)	0	100	100
1	E	335/401 (84%)	330 (98%)	5 (2%)	0	100	100
1	F	335/401 (84%)	330 (98%)	5 (2%)	0	100	100
1	G	335/401 (84%)	330 (98%)	5 (2%)	0	100	100
1	H	335/401 (84%)	330 (98%)	5 (2%)	0	100	100
1	I	335/401 (84%)	330 (98%)	5 (2%)	0	100	100
1	J	335/401 (84%)	330 (98%)	5 (2%)	0	100	100
1	K	335/401 (84%)	330 (98%)	5 (2%)	0	100	100
1	L	335/401 (84%)	330 (98%)	5 (2%)	0	100	100
All	All	4020/4812 (84%)	3960 (98%)	60 (2%)	0	100	100

There are no Ramachandran outliers to report.

5.3.2 Protein sidechains [i](#)

In the following table, the Percentiles column shows the percent sidechain outliers of the chain as a percentile score with respect to all PDB entries followed by that with respect to all EM entries.

The Analysed column shows the number of residues for which the sidechain conformation was analysed, and the total number of residues.

Mol	Chain	Analysed	Rotameric	Outliers	Percentiles	
1	A	287/343 (84%)	287 (100%)	0	100	100
1	B	287/343 (84%)	287 (100%)	0	100	100
1	C	287/343 (84%)	287 (100%)	0	100	100
1	D	287/343 (84%)	287 (100%)	0	100	100
1	E	287/343 (84%)	287 (100%)	0	100	100
1	F	287/343 (84%)	287 (100%)	0	100	100
1	G	287/343 (84%)	287 (100%)	0	100	100
1	H	287/343 (84%)	287 (100%)	0	100	100
1	I	287/343 (84%)	287 (100%)	0	100	100
1	J	287/343 (84%)	287 (100%)	0	100	100
1	K	287/343 (84%)	287 (100%)	0	100	100
1	L	287/343 (84%)	287 (100%)	0	100	100
All	All	3444/4116 (84%)	3444 (100%)	0	100	100

There are no protein residues with a non-rotameric sidechain to report.

Sometimes sidechains can be flipped to improve hydrogen bonding and reduce clashes. 5 of 31 such sidechains are listed below:

Mol	Chain	Res	Type
1	F	279	GLN
1	K	317	ASN
1	G	317	ASN
1	L	279	GLN
1	J	317	ASN

5.3.3 RNA [i](#)

Mol	Chain	Analysed	Backbone Outliers	Pucker Outliers
2	a	6/7 (85%)	0	0

Continued on next page...

Continued from previous page...

Mol	Chain	Analysed	Backbone Outliers	Pucker Outliers
2	b	6/7 (85%)	0	0
2	c	6/7 (85%)	0	0
2	d	6/7 (85%)	0	0
2	e	6/7 (85%)	0	0
2	f	6/7 (85%)	0	0
2	g	6/7 (85%)	0	0
2	h	6/7 (85%)	0	0
2	i	6/7 (85%)	0	0
2	j	6/7 (85%)	0	0
2	k	6/7 (85%)	0	0
2	l	6/7 (85%)	0	0
All	All	72/84 (85%)	0	0

There are no RNA backbone outliers to report.

There are no RNA pucker outliers to report.

5.4 Non-standard residues in protein, DNA, RNA chains [i](#)

There are no non-standard protein/DNA/RNA residues in this entry.

5.5 Carbohydrates [i](#)

There are no oligosaccharides in this entry.

5.6 Ligand geometry [i](#)

There are no ligands in this entry.

5.7 Other polymers [i](#)

There are no such residues in this entry.

5.8 Polymer linkage issues [i](#)

There are no chain breaks in this entry.

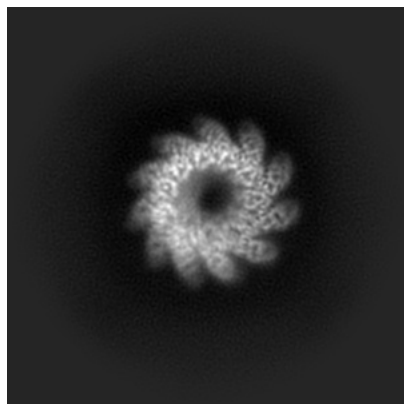
6 Map visualisation [i](#)

This section contains visualisations of the EMDB entry EMD-17615. These allow visual inspection of the internal detail of the map and identification of artifacts.

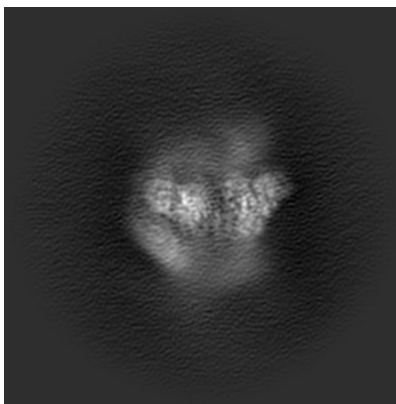
Images derived from a raw map, generated by summing the deposited half-maps, are presented below the corresponding image components of the primary map to allow further visual inspection and comparison with those of the primary map.

6.1 Orthogonal projections [i](#)

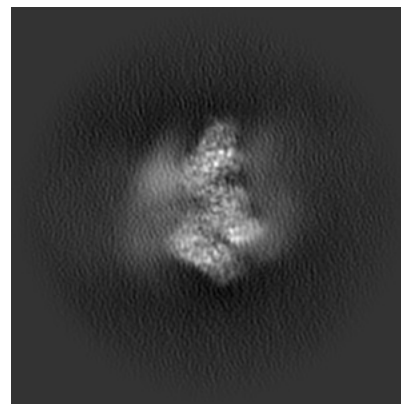
6.1.1 Primary map



X

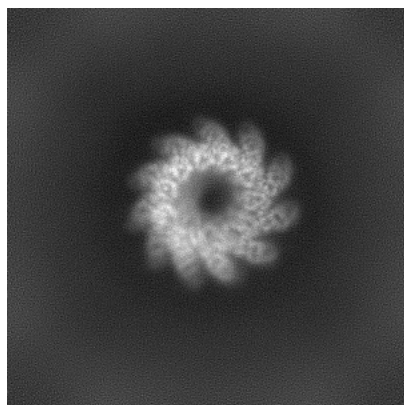


Y

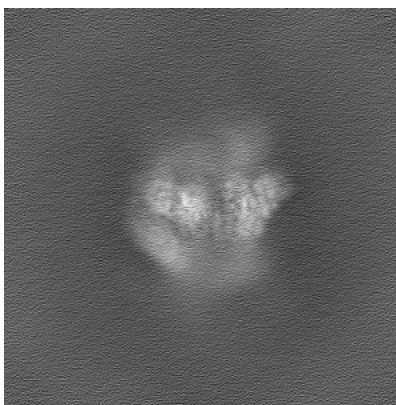


Z

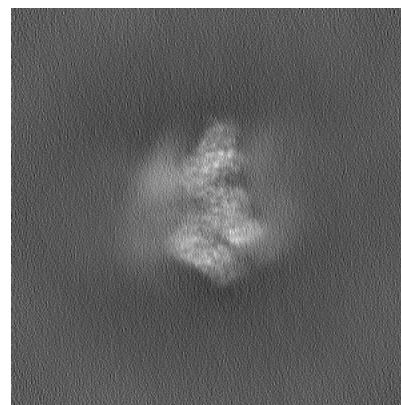
6.1.2 Raw map



X



Y

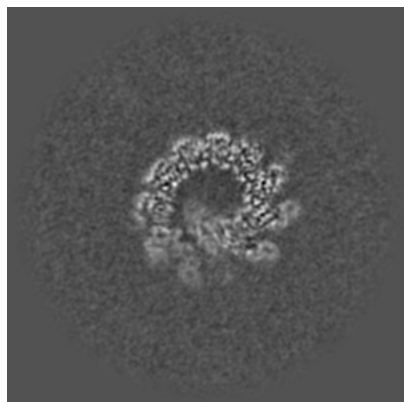


Z

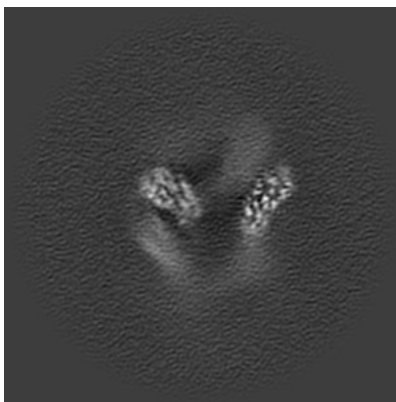
The images above show the map projected in three orthogonal directions.

6.2 Central slices [i](#)

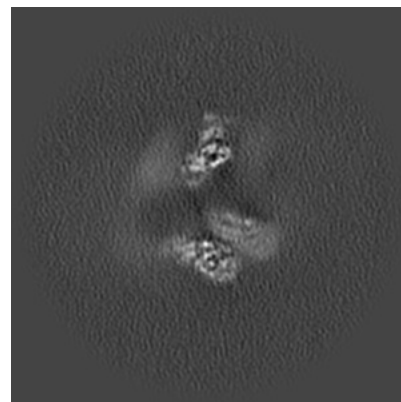
6.2.1 Primary map



X Index: 200

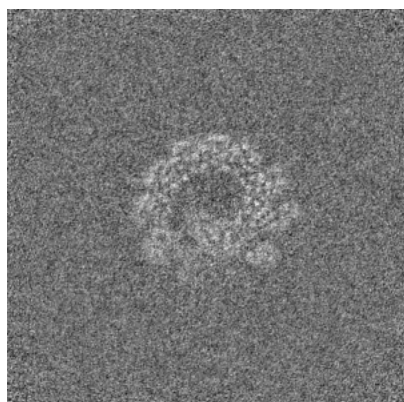


Y Index: 200

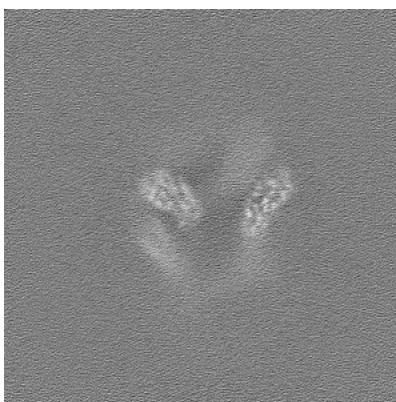


Z Index: 200

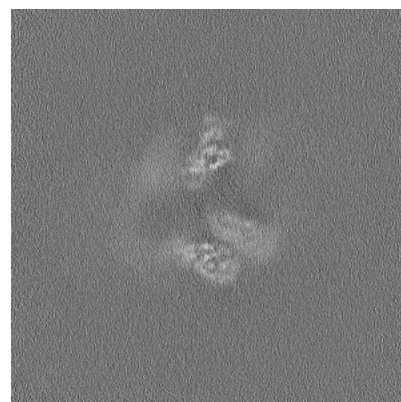
6.2.2 Raw map



X Index: 200



Y Index: 200

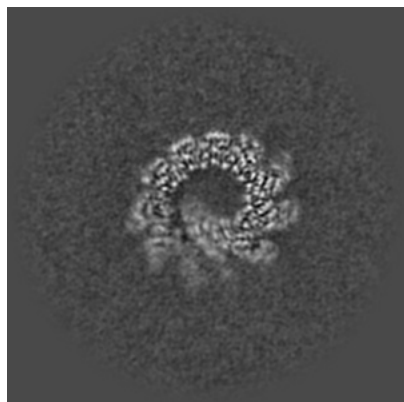


Z Index: 200

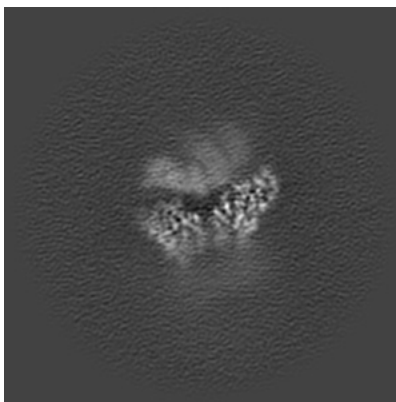
The images above show central slices of the map in three orthogonal directions.

6.3 Largest variance slices [i](#)

6.3.1 Primary map



X Index: 202

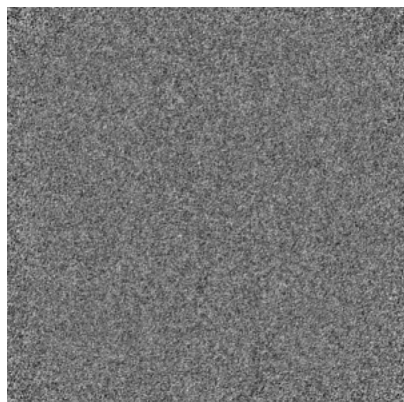


Y Index: 168

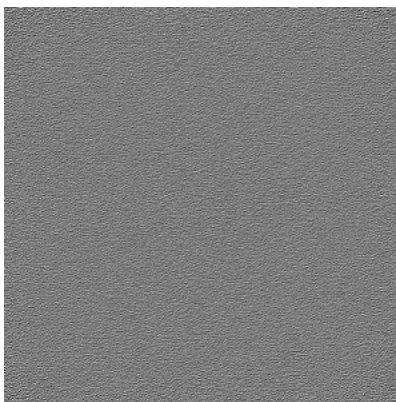


Z Index: 240

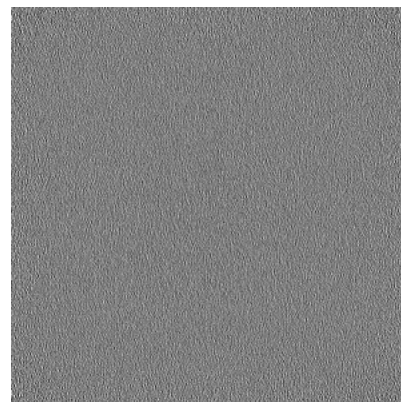
6.3.2 Raw map



X Index: 0



Y Index: 0

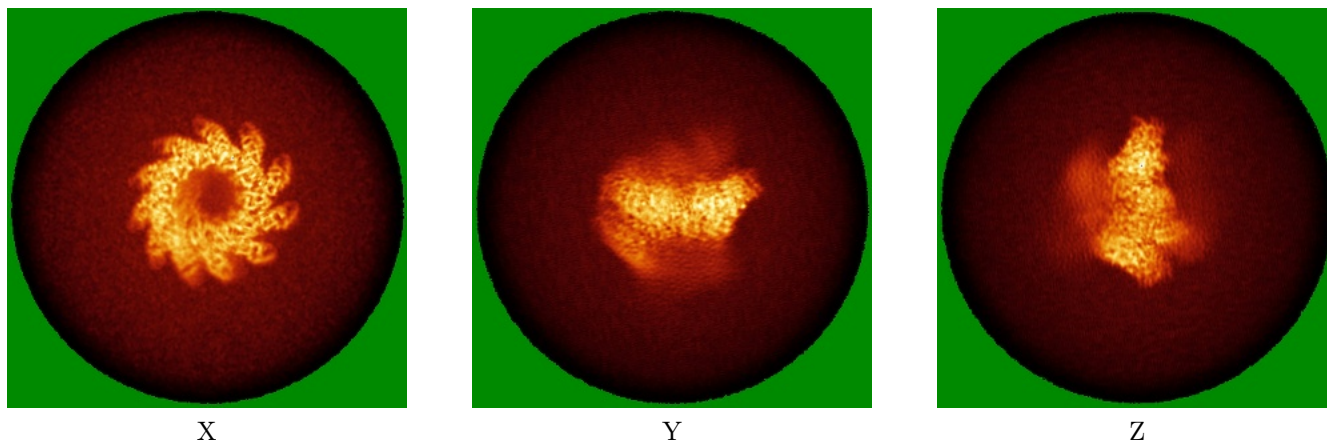


Z Index: 0

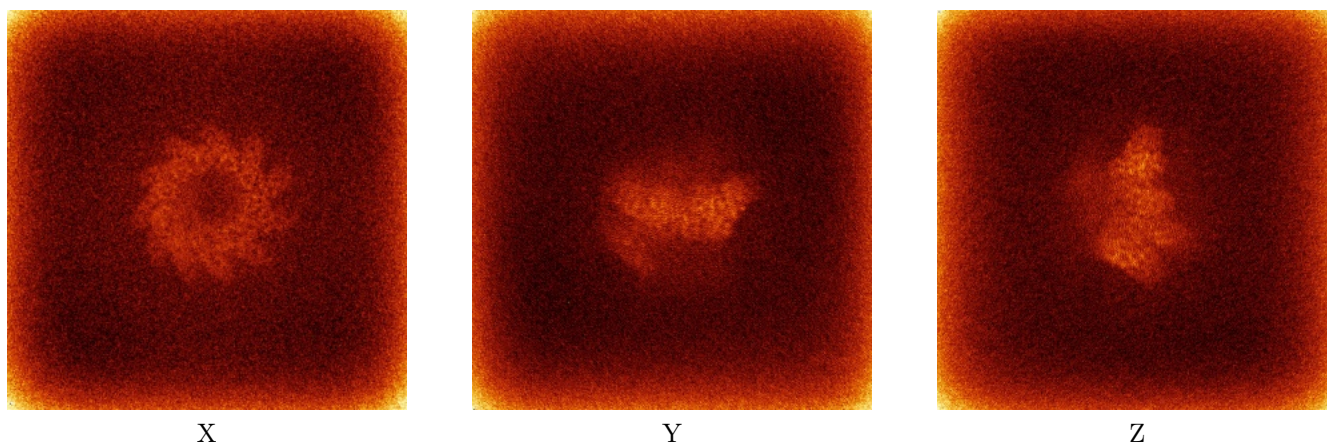
The images above show the largest variance slices of the map in three orthogonal directions.

6.4 Orthogonal standard-deviation projections (False-color) [i](#)

6.4.1 Primary map



6.4.2 Raw map



The images above show the map standard deviation projections with false color in three orthogonal directions. Minimum values are shown in green, max in blue, and dark to light orange shades represent small to large values respectively.

6.5 Orthogonal surface views [i](#)

This section was not generated.

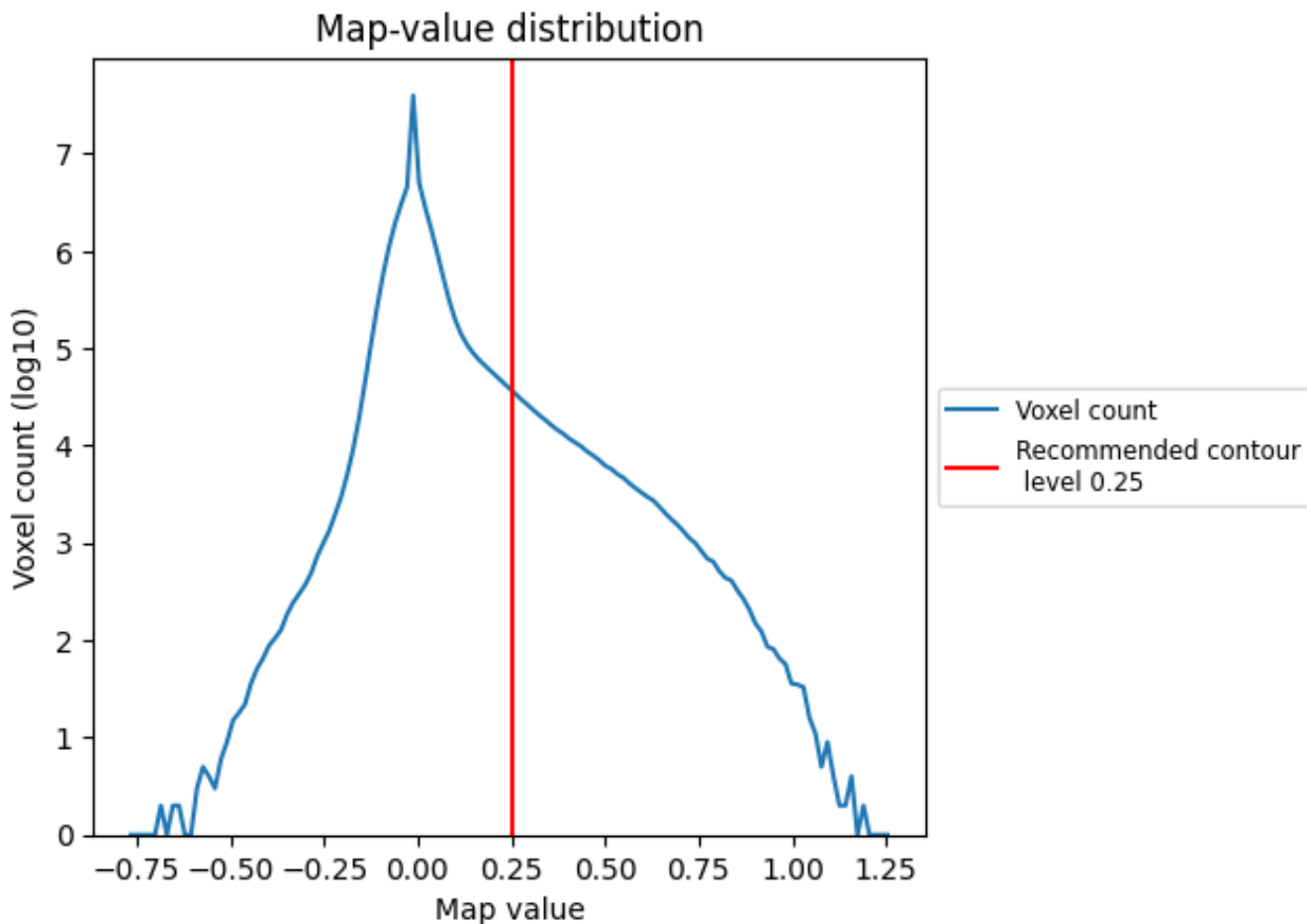
6.6 Mask visualisation [i](#)

This section was not generated. No masks/segmentation were deposited.

7 Map analysis [i](#)

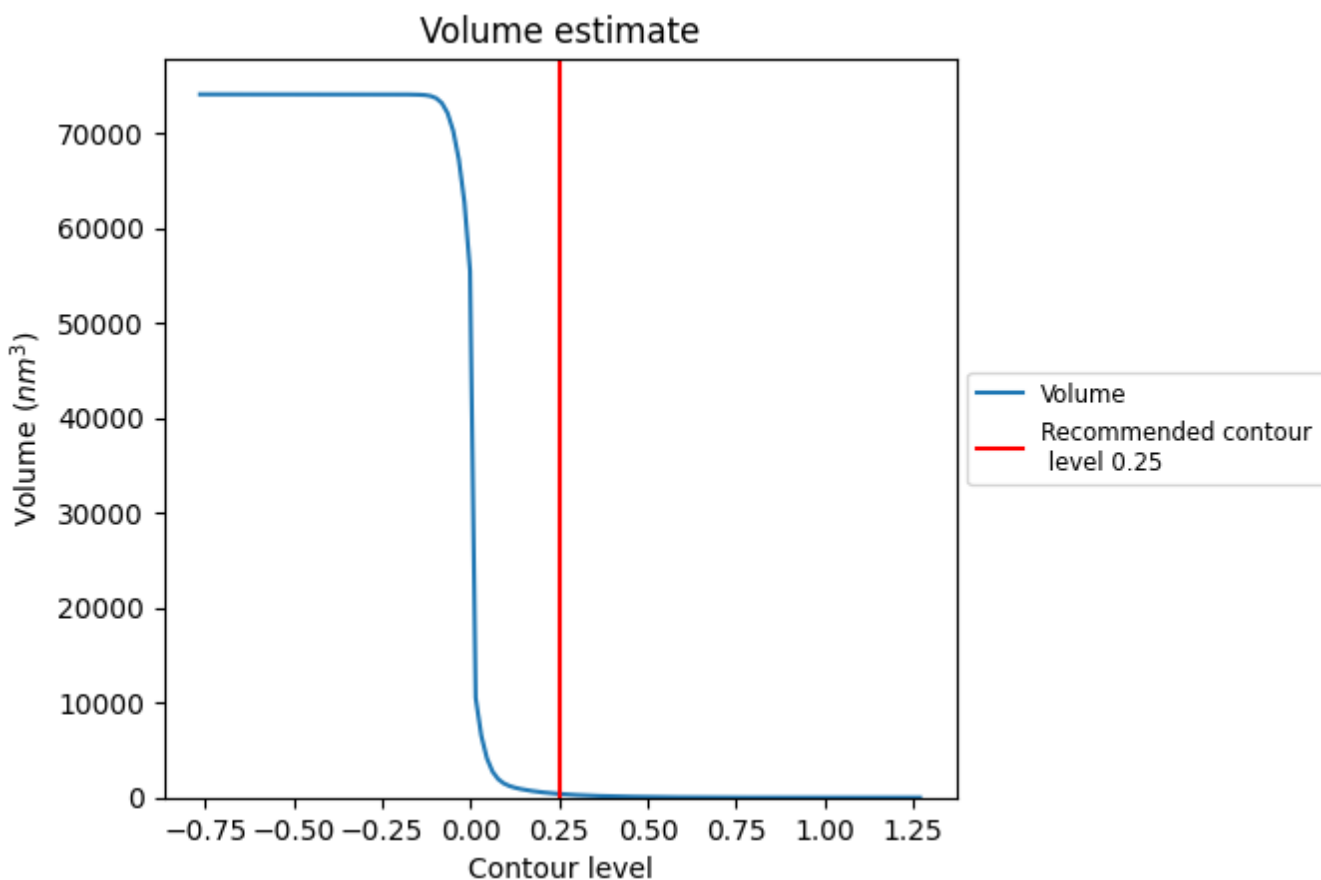
This section contains the results of statistical analysis of the map.

7.1 Map-value distribution [i](#)



The map-value distribution is plotted in 128 intervals along the x-axis. The y-axis is logarithmic. A spike in this graph at zero usually indicates that the volume has been masked.

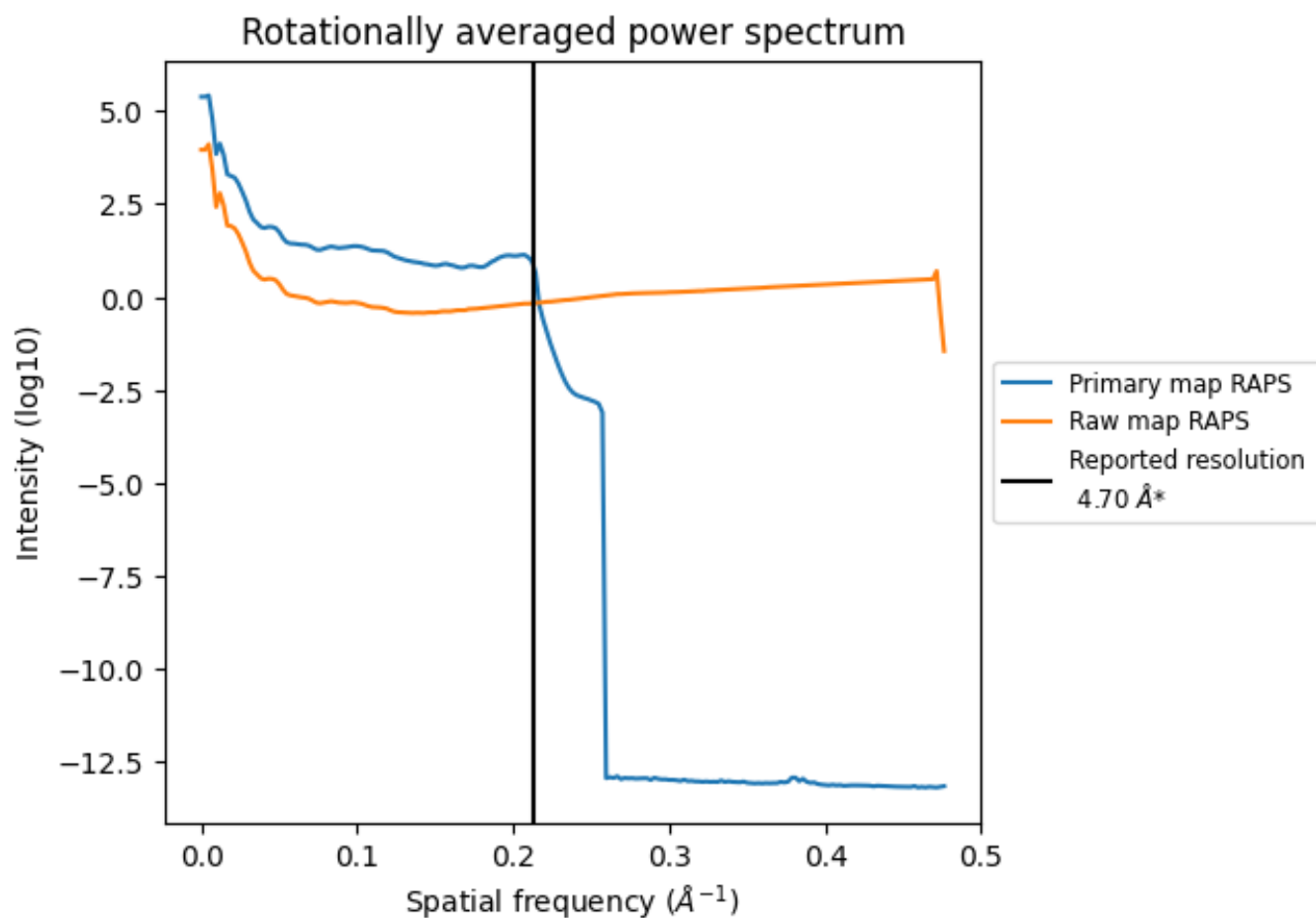
7.2 Volume estimate [i](#)



The volume at the recommended contour level is 385 nm³; this corresponds to an approximate mass of 348 kDa.

The volume estimate graph shows how the enclosed volume varies with the contour level. The recommended contour level is shown as a vertical line and the intersection between the line and the curve gives the volume of the enclosed surface at the given level.

7.3 Rotationally averaged power spectrum [i](#)

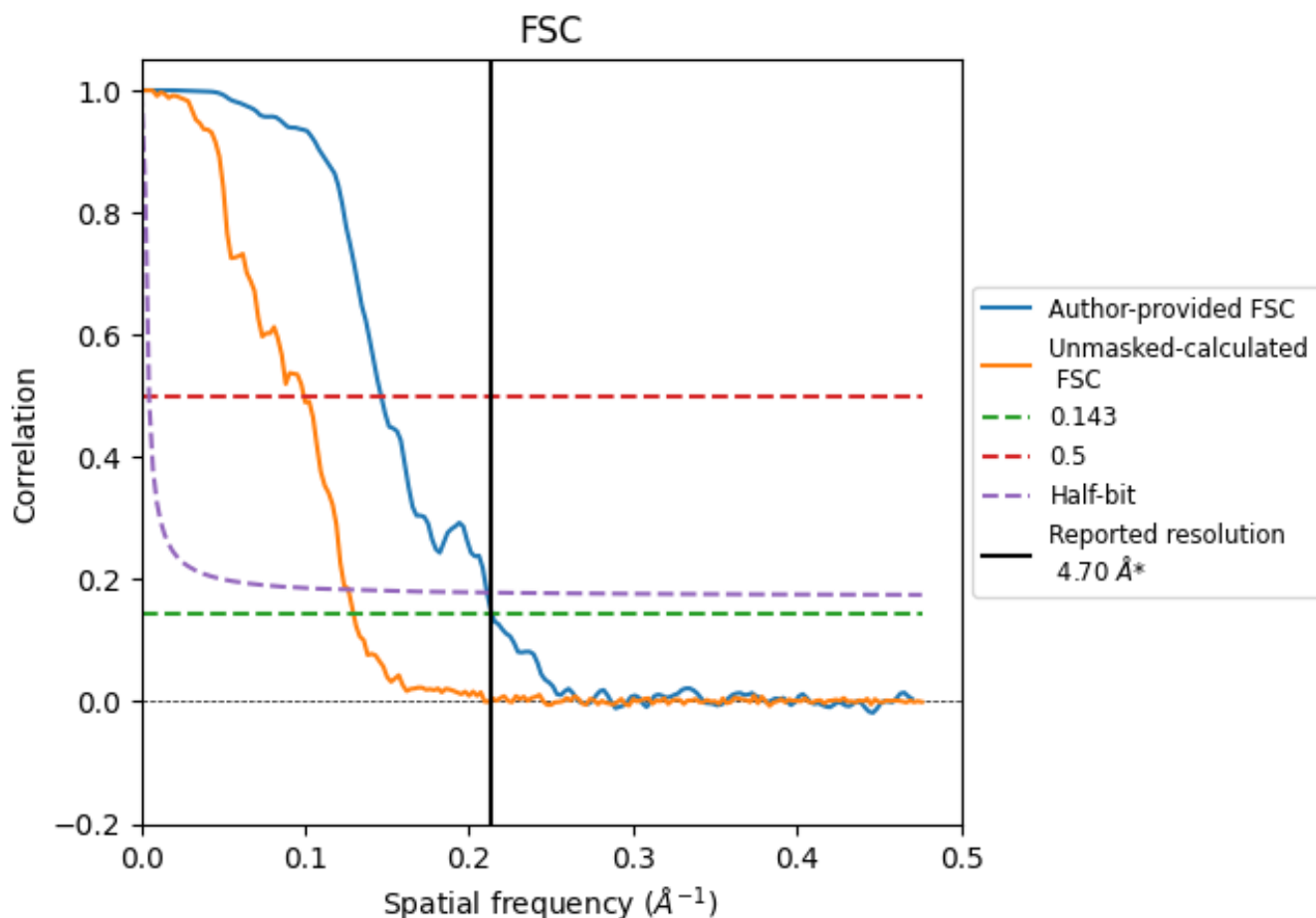


*Reported resolution corresponds to spatial frequency of 0.213 Å⁻¹

8 Fourier-Shell correlation [i](#)

Fourier-Shell Correlation (FSC) is the most commonly used method to estimate the resolution of single-particle and subtomogram-averaged maps. The shape of the curve depends on the imposed symmetry, mask and whether or not the two 3D reconstructions used were processed from a common reference. The reported resolution is shown as a black line. A curve is displayed for the half-bit criterion in addition to lines showing the 0.143 gold standard cut-off and 0.5 cut-off.

8.1 FSC [i](#)



*Reported resolution corresponds to spatial frequency of 0.213 Å⁻¹

8.2 Resolution estimates [i](#)

Resolution estimate (Å)	Estimation criterion (FSC cut-off)		
	0.143	0.5	Half-bit
Reported by author	4.70	-	-
Author-provided FSC curve	4.67	6.83	4.74
Unmasked-calculated*	7.73	10.09	7.91

*Resolution estimate based on FSC curve calculated by comparison of deposited half-maps. The value from deposited half-maps intersecting FSC 0.143 CUT-OFF 7.73 differs from the reported value 4.7 by more than 10 %

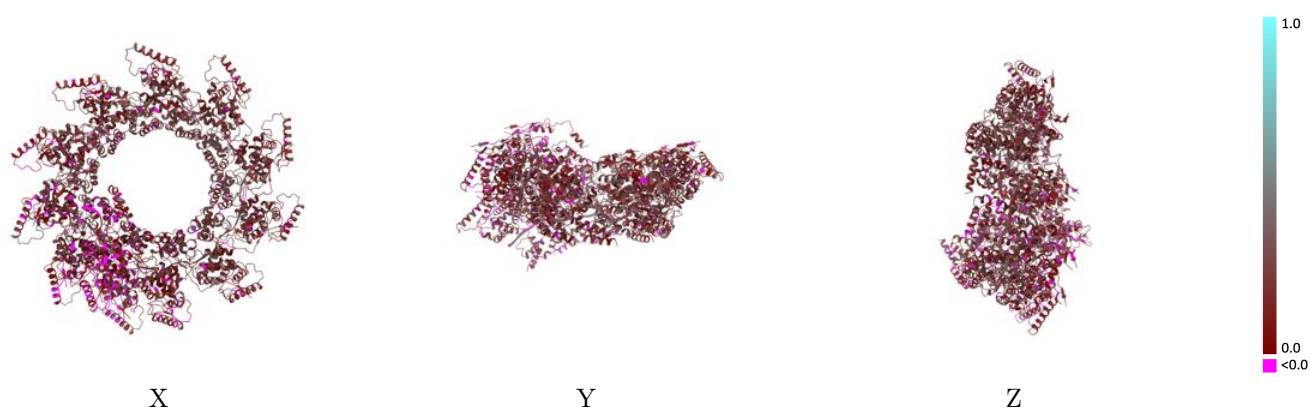
9 Map-model fit [i](#)

This section contains information regarding the fit between EMDB map EMD-17615 and PDB model 8PDN. Per-residue inclusion information can be found in section 3 on page 9.

9.1 Map-model overlay [i](#)

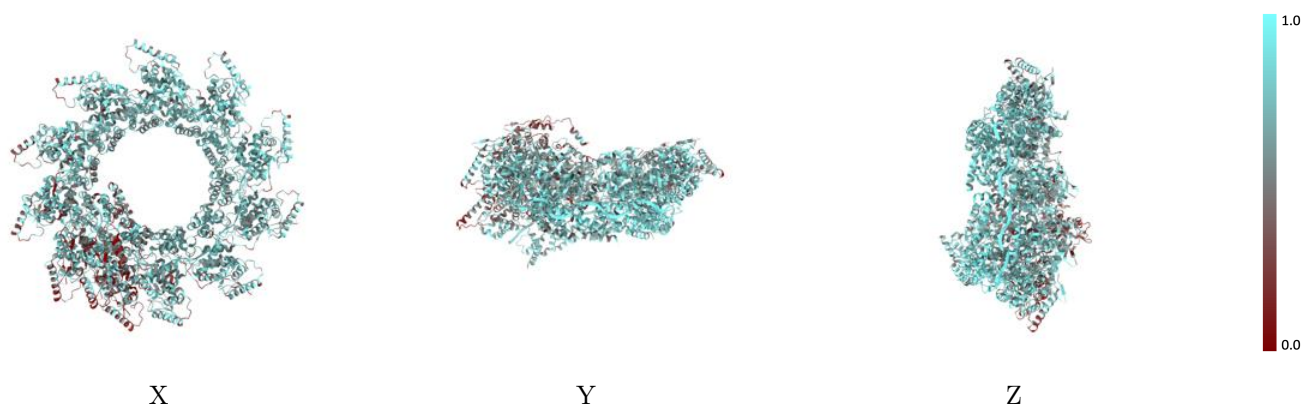
This section was not generated.

9.2 Q-score mapped to coordinate model [i](#)



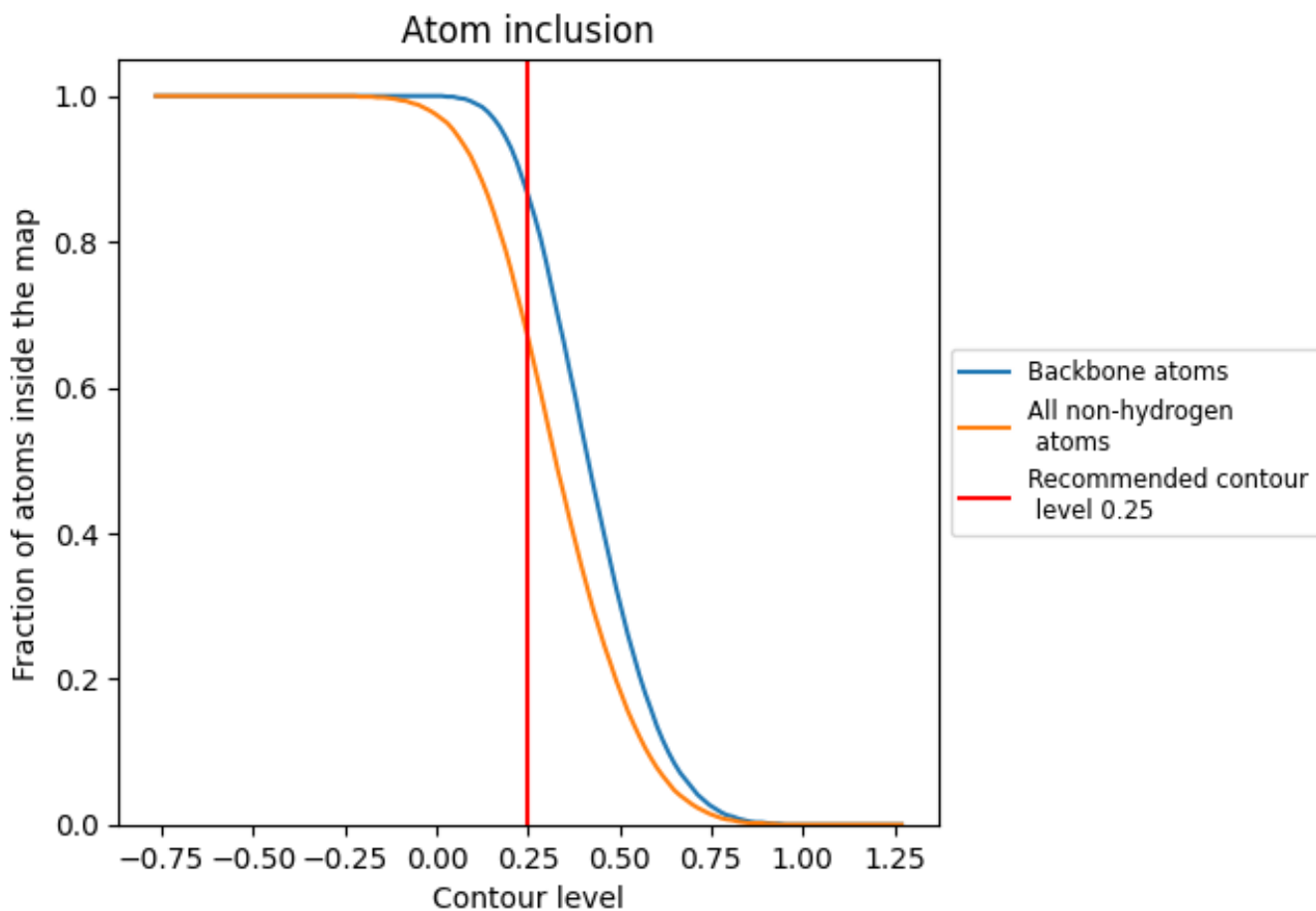
The images above show the model with each residue coloured according to its Q-score. This shows their resolvability in the map with higher Q-score values reflecting better resolvability. Please note: Q-score is calculating the resolvability of atoms, and thus high values are only expected at resolutions at which atoms can be resolved. Low Q-score values may therefore be expected for many entries.

9.3 Atom inclusion mapped to coordinate model [i](#)



The images above show the model with each residue coloured according to its atom inclusion. This shows to what extent they are inside the map at the recommended contour level (0.25).




























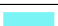


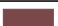


















9.4 Atom inclusion [i](#)



At the recommended contour level, 86% of all backbone atoms, 67% of all non-hydrogen atoms, are inside the map.

9.5 Map-model fit summary

The table lists the average atom inclusion at the recommended contour level (0.25) and Q-score for the entire model and for each chain.

Chain	Atom inclusion	Q-score
All	 0.6690	 0.1870
A	 0.5330	 0.1050
B	 0.6410	 0.1600
C	 0.6780	 0.2120
D	 0.6730	 0.1960
E	 0.7140	 0.2310
F	 0.7170	 0.2310
G	 0.7060	 0.2210
H	 0.6840	 0.2030
I	 0.6820	 0.1920
J	 0.6640	 0.1870
K	 0.6330	 0.1550
L	 0.5320	 0.1130
a	 0.8140	 0.1280
b	 0.8790	 0.2090
c	 0.9570	 0.2830
d	 0.9140	 0.2840
e	 0.9290	 0.3010
f	 0.9430	 0.2620
g	 0.9210	 0.2670
h	 0.9640	 0.3030
i	 0.9640	 0.2930
j	 0.9710	 0.2660
k	 0.9210	 0.2130
l	 0.9210	 0.1620

