



# Full wwPDB X-ray Structure Validation Report ⓘ

Mar 4, 2026 – 09:03 PM UTC

PDB ID : 2PGQ / pdb\_00002pgq  
Title : Human thrombin mutant C191A-C220A in complex with the inhibitor PPACK  
Authors : Bush-Pelc, L.A.; Marino, F.; Chen, Z.; Pineda, A.O.; Mathews, F.S.; Di Cera, E.  
Deposited on : 2007-04-10  
Resolution : 1.80 Å (reported)

This is a Full wwPDB X-ray Structure Validation Report for a publicly released PDB entry.

We welcome your comments at [validation@mail.wwpdb.org](mailto:validation@mail.wwpdb.org)

A user guide is available at

<https://www.wwpdb.org/validation/2017/XrayValidationReportHelp>

with specific help available everywhere you see the ⓘ symbol.

The types of validation reports are described at

<http://www.wwpdb.org/validation/2017/FAQs#types>.

---

The following versions of software and data (see [references ⓘ](#)) were used in the production of this report:

MolProbity : 4-5-2 with Phenix2.0  
Mogul : 2022.3.0, CSD as543be (2022)  
Xtrriage (Phenix) : **NOT EXECUTED**  
EDS : **NOT EXECUTED**  
Buster-report : wwPDB partial adaption of 1.1.7 (2018)  
Percentile statistics : 20250101.v01 (using entries in the PDB archive January 1st 2025)  
Ideal geometry (proteins) : Engh & Huber (2001)  
Ideal geometry (DNA, RNA) : Parkinson et al. (1996)  
Validation Pipeline (wwPDB-VP) : 2.49

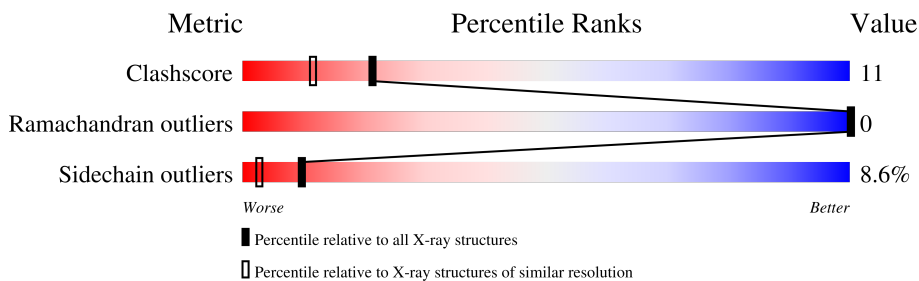
# 1 Overall quality at a glance

The following experimental techniques were used to determine the structure:

*X-RAY DIFFRACTION*

The reported resolution of this entry is 1.80 Å.

Percentile scores (ranging between 0-100) for global validation metrics of the entry are shown in the following graphic. The table shows the number of entries on which the scores are based.



Metric	Whole archive (#Entries)	Similar resolution (#Entries, resolution range(Å))
Clashscore	190562	8479 (1.80-1.80)
Ramachandran outliers	187476	8391 (1.80-1.80)
Sidechain outliers	187428	8390 (1.80-1.80)

The table below summarises the geometric issues observed across the polymeric chains and their fit to the electron density. The red, orange, yellow and green segments of the lower bar indicate the fraction of residues that contain outliers for  $\geq 3$ , 2, 1 and 0 types of geometric quality criteria respectively. A grey segment represents the fraction of residues that are not modelled. The numeric value for each fraction is indicated below the corresponding segment, with a dot representing fractions  $\leq 5\%$ .

Note EDS was not executed.

Mol	Chain	Length	Quality of chain
1	A	45	
2	B	259	

## 2 Entry composition

There are 6 unique types of molecules in this entry. The entry contains 2761 atoms, of which 0 are hydrogens and 0 are deuteriums.

In the tables below, the ZeroOcc column contains the number of atoms modelled with zero occupancy, the AltConf column contains the number of residues with at least one atom in alternate conformation and the Trace column contains the number of residues modelled with at most 2 atoms.

- Molecule 1 is a protein called Thrombin light chain.

Mol	Chain	Residues	Atoms					ZeroOcc	AltConf	Trace
			Total	C	N	O	S			
1	A	43	350	219	57	73	1	0	0	0

- Molecule 2 is a protein called Thrombin heavy chain.

Mol	Chain	Residues	Atoms					ZeroOcc	AltConf	Trace
			Total	C	N	O	S			
2	B	257	2060	1313	365	370	12	0	0	0

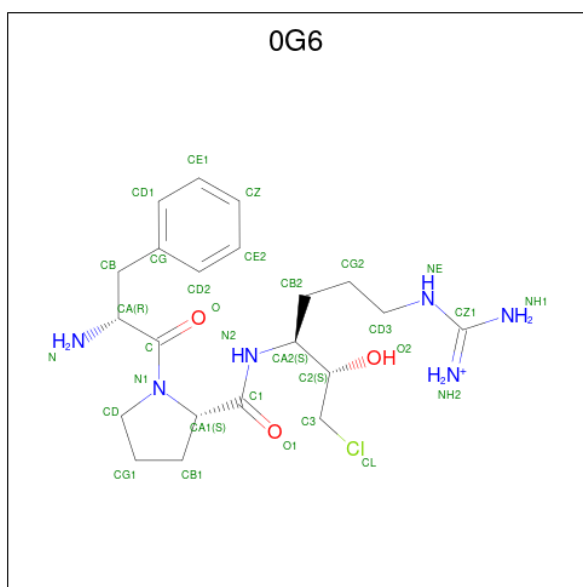
There are 2 discrepancies between the modelled and reference sequences:

Chain	Residue	Modelled	Actual	Comment	Reference
B	191	ALA	CYS	engineered mutation	UNP P00734
B	220	ALA	CYS	engineered mutation	UNP P00734

- Molecule 3 is ZINC ION (CCD ID: ZN) (formula: Zn).

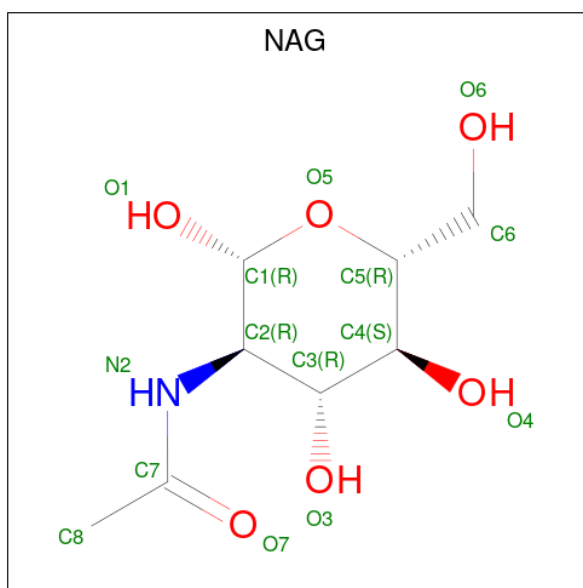
Mol	Chain	Residues	Atoms		ZeroOcc	AltConf
3	A	2	Total	Zn	0	0
			2	2		
3	B	1	Total	Zn	0	0
			1	1		

- Molecule 4 is D-phenylalanyl-N-[(2S,3S)-6-{{[amino(iminio)methyl]amino}}-1-chloro-2-hydroxyhexan-3-yl]-L-prolinamide (CCD ID: 0G6) (formula: C<sub>21</sub>H<sub>34</sub>ClN<sub>6</sub>O<sub>3</sub>).



Mol	Chain	Residues	Atoms				ZeroOcc	AltConf
			Total	C	N	O		
4	B	1	30	21	6	3	0	0

- Molecule 5 is 2-acetamido-2-deoxy-beta-D-glucopyranose (CCD ID: NAG) (formula:  $C_8H_{15}NO_6$ ).



Mol	Chain	Residues	Atoms				ZeroOcc	AltConf
			Total	C	N	O		
5	B	1	14	8	1	5	0	0

- Molecule 6 is water.

<b>Mol</b>	<b>Chain</b>	<b>Residues</b>	<b>Atoms</b>		<b>ZeroOcc</b>	<b>AltConf</b>
6	A	50	Total 50	O 50	0	0
6	B	254	Total 254	O 254	0	0

### 3 Residue-property plots [i](#)

These plots are drawn for all protein, RNA, DNA and oligosaccharide chains in the entry. The first graphic for a chain summarises the proportions of the various outlier classes displayed in the second graphic. The second graphic shows the sequence view annotated by issues in geometry. Residues are color-coded according to the number of geometric quality criteria for which they contain at least one outlier: green = 0, yellow = 1, orange = 2 and red = 3 or more. Stretches of 2 or more consecutive residues without any outlier are shown as a green connector. Residues present in the sample, but not in the model, are shown in grey.


Note EDS was not executed.

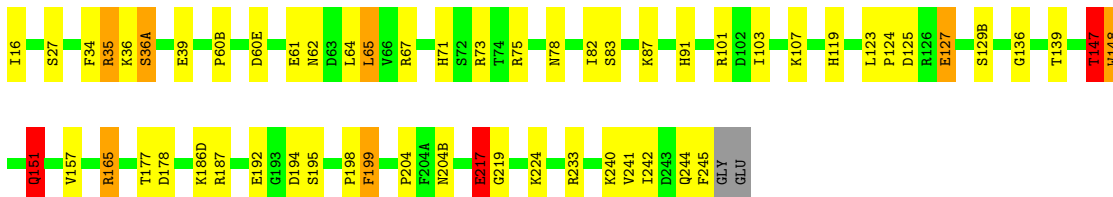
- Molecule 1: Thrombin light chain

Chain A:  58% 29% 9% .



- Molecule 2: Thrombin heavy chain

Chain B:  77% 19% . .



## 4 Data and refinement statistics

Xtrriage (Phenix) and EDS were not executed - this section is therefore incomplete.

Property	Value	Source
Space group	P 21 21 21	Depositor
Cell constants a, b, c, $\alpha$ , $\beta$ , $\gamma$	53.95Å 75.33Å 80.98Å 90.00° 90.00° 90.00°	Depositor
Resolution (Å)	25.59 – 1.80	Depositor
% Data completeness (in resolution range)	97.1 (25.59-1.80)	Depositor
$R_{merge}$	0.07	Depositor
$R_{sym}$	(Not available)	Depositor
Refinement program	CNS 1.1	Depositor
R, $R_{free}$	0.198 , 0.222	Depositor
Estimated twinning fraction	No twinning to report.	Xtrriage
Total number of atoms	2761	wwPDB-VP
Average B, all atoms (Å <sup>2</sup> )	28.0	wwPDB-VP

## 5 Model quality i

### 5.1 Standard geometry i

Bond lengths and bond angles in the following residue types are not validated in this section: ZN, 0G6, NAG

The Z score for a bond length (or angle) is the number of standard deviations the observed value is removed from the expected value. A bond length (or angle) with  $|Z| > 5$  is considered an outlier worth inspection. RMSZ is the root-mean-square of all Z scores of the bond lengths (or angles).

Mol	Chain	Bond lengths		Bond angles	
		RMSZ	# Z  >5	RMSZ	# Z  >5
1	A	1.08	0/356	0.91	0/477
2	B	1.26	8/2113 (0.4%)	1.43	16/2860 (0.6%)
All	All	1.23	8/2469 (0.3%)	1.37	16/3337 (0.5%)

Chiral center outliers are detected by calculating the chiral volume of a chiral center and verifying if the center is modelled as a planar moiety or with the opposite hand. A planarity outlier is detected by checking planarity of atoms in a peptide group, atoms in a mainchain group or atoms of a sidechain that are expected to be planar.

Mol	Chain	#Chirality outliers	#Planarity outliers
2	B	0	2

All (8) bond length outliers are listed below:

Mol	Chain	Res	Type	Atoms	Z	Observed(Å)	Ideal(Å)
2	B	151	GLN	N-CA	7.76	1.56	1.46
2	B	151	GLN	CA-CB	-6.73	1.43	1.53
2	B	147	THR	CA-CB	5.82	1.62	1.53
2	B	148	TRP	CA-C	5.35	1.59	1.52
2	B	103	ILE	CA-CB	5.30	1.62	1.54
2	B	148	TRP	N-CA	5.26	1.52	1.46
2	B	27	SER	N-CA	5.23	1.52	1.46
2	B	204	PRO	CA-C	5.10	1.60	1.52

All (16) bond angle outliers are listed below:

Mol	Chain	Res	Type	Atoms	Z	Observed(°)	Ideal(°)
2	B	217	GLU	O-C-N	-35.08	79.83	122.63
2	B	127	GLU	CG-CD-OE1	18.10	160.03	118.40
2	B	127	GLU	OE1-CD-OE2	-18.04	79.60	122.90

*Continued on next page...*

Continued from previous page...

Mol	Chain	Res	Type	Atoms	Z	Observed(°)	Ideal(°)
2	B	147	THR	N-CA-C	10.17	124.20	111.69
2	B	60(B)	PRO	N-CA-C	6.65	118.81	110.70
2	B	151	GLN	CB-CA-C	6.43	120.72	110.62
2	B	199	PHE	N-CA-C	-6.11	97.17	107.99
2	B	165	ARG	CG-CD-NE	-5.88	99.06	112.00
2	B	64	LEU	N-CA-C	5.64	118.27	109.52
2	B	36(A)	SER	N-CA-C	5.63	122.24	109.81
2	B	35	ARG	N-CA-C	-5.62	101.96	110.28
2	B	129(B)	SER	N-CA-C	5.59	117.45	111.36
2	B	124	PRO	N-CA-C	5.52	119.86	111.19
2	B	123	LEU	CB-CA-C	5.31	116.06	108.68
2	B	123	LEU	N-CA-C	-5.24	103.08	110.31
2	B	125	ASP	N-CA-C	-5.10	103.19	110.59

There are no chirality outliers.

All (2) planarity outliers are listed below:

Mol	Chain	Res	Type	Group
2	B	217	GLU	Mainchain
2	B	36(A)	SER	Mainchain

## 5.2 Too-close contacts

In the following table, the Non-H and H(model) columns list the number of non-hydrogen atoms and hydrogen atoms in the chain respectively. The H(added) column lists the number of hydrogen atoms added and optimized by MolProbity. The Clashes column lists the number of clashes within the asymmetric unit, whereas Symm-Clashes lists symmetry-related clashes.

Mol	Chain	Non-H	H(model)	H(added)	Clashes	Symm-Clashes
1	A	350	0	329	8	1
2	B	2060	0	2025	42	1
3	A	2	0	0	0	0
3	B	1	0	0	0	0
4	B	30	0	30	4	0
5	B	14	0	13	0	0
6	A	50	0	0	5	0
6	B	254	0	0	7	0
All	All	2761	0	2397	53	1

The all-atom clashscore is defined as the number of clashes found per 1000 atoms (including hydrogen atoms). The all-atom clashscore for this structure is 11.

All (53) close contacts within the same asymmetric unit are listed below, sorted by their clash magnitude.

Atom-1	Atom-2	Interatomic distance (Å)	Clash overlap (Å)
4:B:301:OG6:C2	4:B:301:OG6:C3	1.76	1.58
2:B:67:ARG:NH1	2:B:82:ILE:HG12	1.78	0.98
2:B:73:ARG:NH1	2:B:151:GLN:HE22	1.62	0.97
1:A:1(Q):GLU:HA	6:A:289:HOH:O	1.68	0.93
1:A:14(A):LYS:HE3	6:B:719:HOH:O	1.68	0.92
2:B:240:LYS:O	2:B:244:GLN:HB3	1.69	0.92
1:A:14(H):GLU:HG3	6:A:330:HOH:O	1.73	0.88
2:B:73:ARG:HH12	2:B:151:GLN:HE22	1.25	0.82
2:B:217:GLU:O	2:B:219:GLY:C	2.19	0.80
2:B:67:ARG:HH11	2:B:82:ILE:HG12	1.49	0.77
1:A:1(N):THR:HB	1:A:1(C):GLU:OE1	1.86	0.75
2:B:61:GLU:HG2	2:B:87:LYS:HA	1.66	0.75
2:B:127:GLU:OE2	2:B:127:GLU:HA	1.88	0.71
2:B:192:GLU:OE1	6:B:738:HOH:O	2.11	0.69
4:B:301:OG6:C3	4:B:301:OG6:O2	2.37	0.69
1:A:14(H):GLU:HG3	6:A:366:HOH:O	1.94	0.68
2:B:78:ASN:OD1	6:B:770:HOH:O	2.13	0.65
2:B:217:GLU:OE1	6:B:723:HOH:O	2.14	0.65
2:B:241:VAL:O	2:B:245:PHE:N	2.30	0.64
2:B:35:ARG:NH1	2:B:39:GLU:OE1	2.31	0.64
2:B:71:HIS:HE1	6:B:623:HOH:O	1.82	0.62
2:B:34:PHE:HB2	2:B:65:LEU:HD22	1.83	0.61
1:A:1(Q):GLU:CA	6:A:289:HOH:O	2.36	0.60
2:B:195:SER:OG	4:B:301:OG6:C3	2.50	0.59
2:B:217:GLU:HG2	2:B:224:LYS:HE3	1.84	0.59
2:B:165:ARG:NH2	2:B:178:ASP:HA	2.19	0.58
2:B:73:ARG:NH1	2:B:151:GLN:NE2	2.44	0.57
2:B:165:ARG:NH2	2:B:177:THR:O	2.38	0.56
2:B:217:GLU:O	2:B:219:GLY:O	2.27	0.53
2:B:67:ARG:NH1	2:B:82:ILE:CG1	2.63	0.51
2:B:73:ARG:HH12	2:B:151:GLN:NE2	2.01	0.51
2:B:127:GLU:OE2	2:B:127:GLU:CA	2.55	0.51
2:B:139:THR:HG22	2:B:157:VAL:HG22	1.95	0.49
2:B:107:LYS:HD2	2:B:245:PHE:CE1	2.48	0.49
2:B:107:LYS:HD2	2:B:245:PHE:HE1	1.78	0.48
2:B:240:LYS:O	2:B:244:GLN:CB	2.54	0.47
1:A:1(M):PHE:N	1:A:1(C):GLU:OE2	2.35	0.46
2:B:67:ARG:HH12	2:B:82:ILE:CD1	2.28	0.45
2:B:36:LYS:HE2	2:B:62:ASN:O	2.16	0.45
2:B:60(E):ASP:O	2:B:60(E):ASP:CG	2.59	0.44

*Continued on next page...*

Continued from previous page...

Atom-1	Atom-2	Interatomic distance (Å)	Clash overlap (Å)
4:B:301:0G6:C3	4:B:301:0G6:CA2	2.84	0.43
2:B:61:GLU:HG2	2:B:87:LYS:CA	2.41	0.43
2:B:75:ARG:NH2	6:B:676:HOH:O	2.51	0.43
1:A:14(A):LYS:HG2	6:A:400:HOH:O	2.18	0.42
2:B:136:GLY:HA3	2:B:199:PHE:CE1	2.54	0.42
2:B:67:ARG:HH12	2:B:82:ILE:HG12	1.75	0.42
2:B:78:ASN:HA	6:B:770:HOH:O	2.20	0.42
2:B:242:ILE:C	2:B:244:GLN:H	2.26	0.42
2:B:147:THR:O	2:B:148:TRP:CB	2.68	0.42
2:B:91:HIS:CE1	2:B:101:ARG:HD3	2.55	0.41
2:B:204(B):ASN:C	2:B:204(B):ASN:HD22	2.28	0.41
2:B:16:ILE:N	2:B:194:ASP:OD2	2.54	0.40
2:B:186(D):LYS:HD3	2:B:187:ARG:H	1.87	0.40

All (1) symmetry-related close contacts are listed below. The label for Atom-2 includes the symmetry operator and encoded unit-cell translations to be applied.

Atom-1	Atom-2	Interatomic distance (Å)	Clash overlap (Å)
1:A:1(A):ASP:OD2	2:B:127:GLU:OE1[4_474]	1.96	0.24

## 5.3 Torsion angles [i](#)

### 5.3.1 Protein backbone [i](#)

In the following table, the Percentiles column shows the percent Ramachandran outliers of the chain as a percentile score with respect to all X-ray entries followed by that with respect to entries of similar resolution.

The Analysed column shows the number of residues for which the backbone conformation was analysed, and the total number of residues.

Mol	Chain	Analysed	Favoured	Allowed	Outliers	Percentiles	
1	A	41/45 (91%)	40 (98%)	1 (2%)	0	100	100
2	B	255/259 (98%)	247 (97%)	8 (3%)	0	100	100
All	All	296/304 (97%)	287 (97%)	9 (3%)	0	100	100

There are no Ramachandran outliers to report.

### 5.3.2 Protein sidechains [i](#)

In the following table, the Percentiles column shows the percent sidechain outliers of the chain as a percentile score with respect to all X-ray entries followed by that with respect to entries of similar resolution.

The Analysed column shows the number of residues for which the sidechain conformation was analysed, and the total number of residues.

Mol	Chain	Analysed	Rotameric	Outliers	Percentiles
1	A	38/40 (95%)	24 (63%)	14 (37%)	<b>0</b> <b>0</b>
2	B	219/223 (98%)	211 (96%)	8 (4%)	<b>30</b> <b>18</b>
All	All	257/263 (98%)	235 (91%)	22 (9%)	<b>10</b> <b>3</b>

All (22) residues with a non-rotameric sidechain are listed below:

Mol	Chain	Res	Type
1	A	1(Q)	GLU
1	A	1(P)	TYR
1	A	1(O)	GLN
1	A	1(N)	THR
1	A	1(L)	PHE
1	A	1(K)	ASN
1	A	1(J)	PRO
1	A	1(I)	ARG
1	A	1(H)	THR
1	A	1(G)	PHE
1	A	1(E)	SER
1	A	1(C)	GLU
1	A	1(A)	ASP
1	A	1	CYS
2	B	65	LEU
2	B	83	SER
2	B	119	HIS
2	B	147	THR
2	B	151	GLN
2	B	198	PRO
2	B	217	GLU
2	B	233	ARG

Sometimes sidechains can be flipped to improve hydrogen bonding and reduce clashes. All (6) such sidechains are listed below:

Mol	Chain	Res	Type
2	B	62	ASN
2	B	71	HIS
2	B	78	ASN
2	B	151	GLN
2	B	204(B)	ASN
2	B	209	GLN

### 5.3.3 RNA [i](#)

There are no RNA molecules in this entry.

### 5.4 Non-standard residues in protein, DNA, RNA chains [i](#)

There are no non-standard protein/DNA/RNA residues in this entry.

### 5.5 Carbohydrates [i](#)

There are no oligosaccharides in this entry.

### 5.6 Ligand geometry [i](#)

Of 5 ligands modelled in this entry, 3 are monoatomic - leaving 2 for Mogul analysis.

In the following table, the Counts columns list the number of bonds (or angles) for which Mogul statistics could be retrieved, the number of bonds (or angles) that are observed in the model and the number of bonds (or angles) that are defined in the Chemical Component Dictionary. The Link column lists molecule types, if any, to which the group is linked. The Z score for a bond length (or angle) is the number of standard deviations the observed value is removed from the expected value. A bond length (or angle) with  $|Z| > 2$  is considered an outlier worth inspection. RMSZ is the root-mean-square of all Z scores of the bond lengths (or angles).

Mol	Type	Chain	Res	Link	Bond lengths			Bond angles		
					Counts	RMSZ	$\# Z  > 2$	Counts	RMSZ	$\# Z  > 2$
5	NAG	B	600	2	14,14,15	0.39	0	17,19,21	1.77	4 (23%)
4	OG6	B	301	2	30,31,32	2.23	3 (10%)	37,41,42	1.21	4 (10%)

In the following table, the Chirals column lists the number of chiral outliers, the number of chiral centers analysed, the number of these observed in the model and the number defined in the Chemical Component Dictionary. Similar counts are reported in the Torsion and Rings columns. '-' means no outliers of that kind were identified.

Mol	Type	Chain	Res	Link	Chirals	Torsions	Rings
5	NAG	B	600	2	-	4/6/23/26	0/1/1/1
4	0G6	B	301	2	-	3/31/41/43	0/2/2/2

All (3) bond length outliers are listed below:

Mol	Chain	Res	Type	Atoms	Z	Observed(Å)	Ideal(Å)
4	B	301	0G6	C3-C2	8.72	1.76	1.51
4	B	301	0G6	O2-C2	-6.64	1.25	1.43
4	B	301	0G6	O1-C1	2.11	1.27	1.23

All (8) bond angle outliers are listed below:

Mol	Chain	Res	Type	Atoms	Z	Observed(°)	Ideal(°)
5	B	600	NAG	C3-C4-C5	3.91	117.31	110.23
4	B	301	0G6	CA-C-N1	-3.48	111.85	118.74
5	B	600	NAG	C1-O5-C5	3.31	116.62	112.19
4	B	301	0G6	O-C-CA	3.01	125.14	119.61
5	B	600	NAG	C4-C3-C2	2.86	115.21	111.02
5	B	600	NAG	C6-C5-C4	-2.50	106.89	113.02
4	B	301	0G6	O2-C2-C3	-2.39	102.52	109.68
4	B	301	0G6	CB-CA-C	2.16	115.20	109.43

There are no chirality outliers.

All (7) torsion outliers are listed below:

Mol	Chain	Res	Type	Atoms
5	B	600	NAG	C8-C7-N2-C2
5	B	600	NAG	O7-C7-N2-C2
5	B	600	NAG	C4-C5-C6-O6
5	B	600	NAG	O5-C5-C6-O6
4	B	301	0G6	C3-C2-CA2-N2
4	B	301	0G6	C3-C2-CA2-CB2
4	B	301	0G6	O2-C2-CA2-CB2

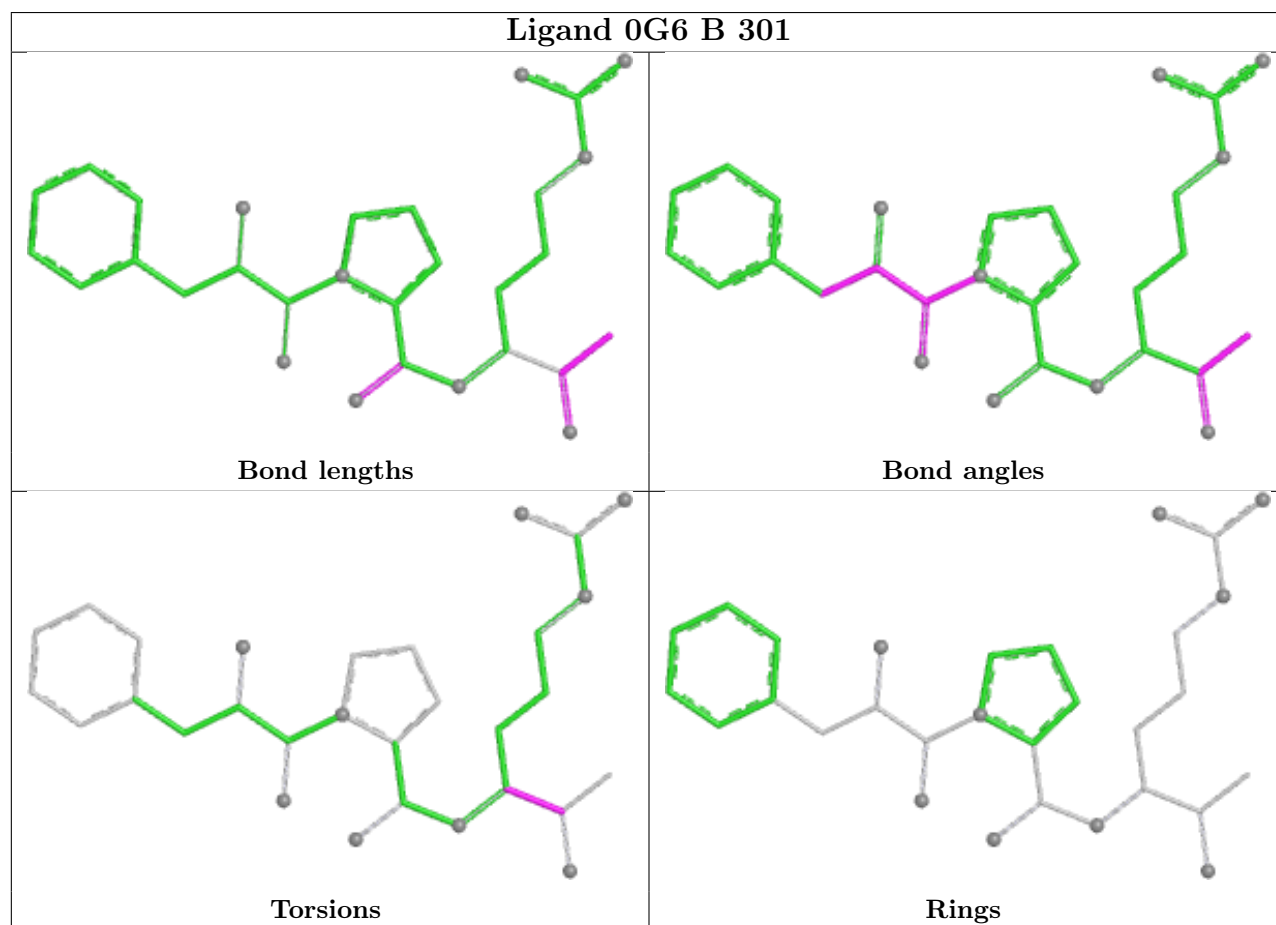
There are no ring outliers.

1 monomer is involved in 4 short contacts:

Mol	Chain	Res	Type	Clashes	Symm-Clashes
4	B	301	0G6	4	0

The following is a two-dimensional graphical depiction of Mogul quality analysis of bond lengths,

bond angles, torsion angles, and ring geometry for all instances of the Ligand of Interest. In addition, ligands with molecular weight > 250 and outliers as shown on the validation Tables will also be included. For torsion angles, if less than 5% of the Mogul distribution of torsion angles is within 10 degrees of the torsion angle in question, then that torsion angle is considered an outlier. Any bond that is central to one or more torsion angles identified as an outlier by Mogul will be highlighted in the graph. For rings, the root-mean-square deviation (RMSD) between the ring in question and similar rings identified by Mogul is calculated over all ring torsion angles. If the average RMSD is greater than 60 degrees and the minimal RMSD between the ring in question and any Mogul-identified rings is also greater than 60 degrees, then that ring is considered an outlier. The outliers are highlighted in purple. The color gray indicates Mogul did not find sufficient equivalents in the CSD to analyse the geometry.



## 5.7 Other polymers [\(i\)](#)

There are no such residues in this entry.

## 5.8 Polymer linkage issues [\(i\)](#)

There are no chain breaks in this entry.

## 6 Fit of model and data

### 6.1 Protein, DNA and RNA chains

EDS was not executed - this section is therefore empty.

### 6.2 Non-standard residues in protein, DNA, RNA chains

EDS was not executed - this section is therefore empty.

### 6.3 Carbohydrates

EDS was not executed - this section is therefore empty.

### 6.4 Ligands

EDS was not executed - this section is therefore empty.

### 6.5 Other polymers

EDS was not executed - this section is therefore empty.