



Full wwPDB X-ray Structure Validation Report ⓘ

Mar 12, 2026 – 12:25 PM UTC

PDB ID : 7PHD / pdb_00007phd
Title : Chimeric carminomycin-4-O-methyltransferase (DnrK) with a region from 10-decarboxylase TamK
Authors : Grocholski, T.; Dinis, P.; MetsaKetela, M.
Deposited on : 2021-08-17
Resolution : 1.53 Å (reported)

This is a Full wwPDB X-ray Structure Validation Report for a publicly released PDB entry.

We welcome your comments at validation@mail.wwpdb.org

A user guide is available at

<https://www.wwpdb.org/validation/2017/XrayValidationReportHelp>

with specific help available everywhere you see the ⓘ symbol.

The types of validation reports are described at

<http://www.wwpdb.org/validation/2017/FAQs#types>.

The following versions of software and data (see [references ⓘ](#)) were used in the production of this report:

MolProbity : 4-5-2 with Phenix2.0
Mogul : 2022.3.0, CSD as543be (2022)
Xtrriage (Phenix) : 2.0
EDS : 3.0
Buster-report : wwPDB partial adaption of 1.1.7 (2018)
Percentile statistics : 20250101.v01 (using entries in the PDB archive January 1st 2025)
CCP4 : 9.0.010 (Gargrove)
Density-Fitness : 1.0.12
Ideal geometry (proteins) : Engh & Huber (2001)
Ideal geometry (DNA, RNA) : Parkinson et al. (1996)
Validation Pipeline (wwPDB-VP) : 2.49

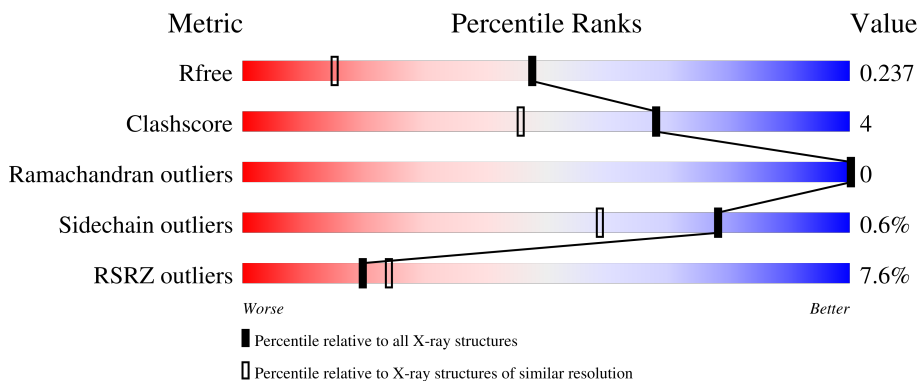
1 Overall quality at a glance

The following experimental techniques were used to determine the structure:

X-RAY DIFFRACTION

The reported resolution of this entry is 1.53 Å.

Percentile scores (ranging between 0-100) for global validation metrics of the entry are shown in the following graphic. The table shows the number of entries on which the scores are based.



Metric	Whole archive (#Entries)	Similar resolution (#Entries, resolution range(Å))
R_{free}	180053	1003 (1.54-1.54)
Clashscore	190562	1025 (1.54-1.54)
Ramachandran outliers	187476	1007 (1.54-1.54)
Sidechain outliers	187428	1007 (1.54-1.54)
RSRZ outliers	180081	1002 (1.54-1.54)

The table below summarises the geometric issues observed across the polymeric chains and their fit to the electron density. The red, orange, yellow and green segments of the lower bar indicate the fraction of residues that contain outliers for ≥ 3 , 2, 1 and 0 types of geometric quality criteria respectively. A grey segment represents the fraction of residues that are not modelled. The numeric value for each fraction is indicated below the corresponding segment, with a dot representing fractions $\leq 5\%$. The upper red bar (where present) indicates the fraction of residues that have poor fit to the electron density. The numeric value is given above the bar.

Mol	Chain	Length	Quality of chain
1	A	369	 5% 79% 6% 10%
1	B	369	 8% 85% 6% 11%

2 Entry composition [i](#)

There are 6 unique types of molecules in this entry. The entry contains 5280 atoms, of which 0 are hydrogens and 0 are deuteriums.

In the tables below, the ZeroOcc column contains the number of atoms modelled with zero occupancy, the AltConf column contains the number of residues with at least one atom in alternate conformation and the Trace column contains the number of residues modelled with at most 2 atoms.

- Molecule 1 is a protein called Carminomycin 4-O-methyltransferase DnrK, Methyltransferase domain-containing protein.

Mol	Chain	Residues	Atoms					ZeroOcc	AltConf	Trace
			Total	C	N	O	S			
1	A	313	2341	1497	419	420	5	2	2	0
1	B	328	2431	1558	422	447	4	0	0	0

There are 22 discrepancies between the modelled and reference sequences:

Chain	Residue	Modelled	Actual	Comment	Reference
A	-9	MET	-	initiating methionine	UNP Q06528
A	-8	ALA	-	expression tag	UNP Q06528
A	-7	HIS	-	expression tag	UNP Q06528
A	-6	HIS	-	expression tag	UNP Q06528
A	-5	HIS	-	expression tag	UNP Q06528
A	-4	HIS	-	expression tag	UNP Q06528
A	-3	HIS	-	expression tag	UNP Q06528
A	-2	HIS	-	expression tag	UNP Q06528
A	-1	HIS	-	expression tag	UNP Q06528
A	0	ARG	-	expression tag	UNP Q06528
A	1	SER	-	expression tag	UNP Q06528
B	-9	MET	-	initiating methionine	UNP Q06528
B	-8	ALA	-	expression tag	UNP Q06528
B	-7	HIS	-	expression tag	UNP Q06528
B	-6	HIS	-	expression tag	UNP Q06528
B	-5	HIS	-	expression tag	UNP Q06528
B	-4	HIS	-	expression tag	UNP Q06528
B	-3	HIS	-	expression tag	UNP Q06528
B	-2	HIS	-	expression tag	UNP Q06528
B	-1	HIS	-	expression tag	UNP Q06528
B	0	ARG	-	expression tag	UNP Q06528
B	1	SER	-	expression tag	UNP Q06528

- Molecule 2 is SULFATE ION (CCD ID: SO4) (formula: O₄S).



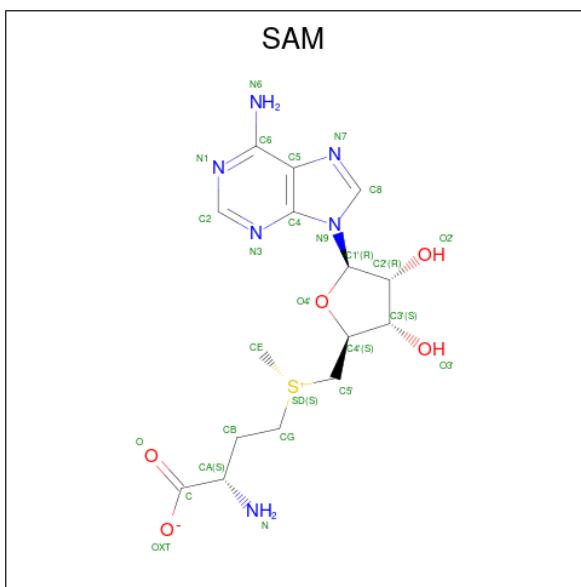
Mol	Chain	Residues	Atoms			ZeroOcc	AltConf
2	A	1	Total	O	S	0	0
			5	4	1		
2	A	1	Total	O	S	0	0
			5	4	1		
2	A	1	Total	O	S	0	0
			5	4	1		
2	B	1	Total	O	S	0	0
			5	4	1		

- Molecule 3 is GLYCEROL (CCD ID: GOL) (formula: $C_3H_8O_3$).



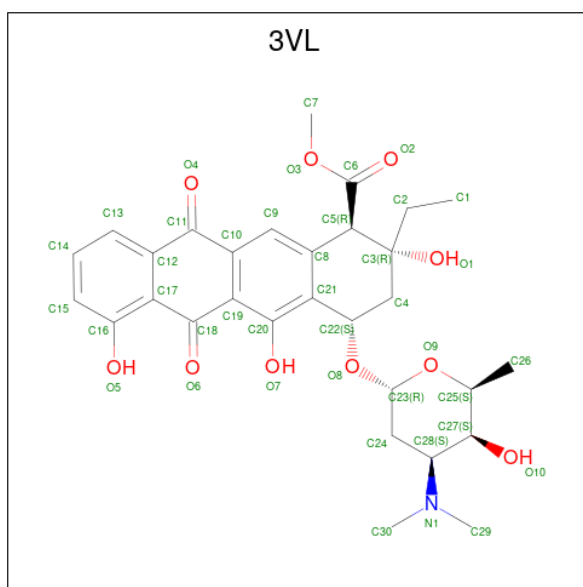
Mol	Chain	Residues	Atoms			ZeroOcc	AltConf
3	A	1	Total	C	O	0	0
			6	3	3		
3	B	1	Total	C	O	0	0
			6	3	3		
3	B	1	Total	C	O	0	0
			6	3	3		

- Molecule 4 is S-ADENOSYLMETHIONINE (CCD ID: SAM) (formula: C₁₅H₂₂N₆O₅S) (labeled as "Ligand of Interest" by depositor).



Mol	Chain	Residues	Atoms					ZeroOcc	AltConf
4	A	1	Total	C	N	O	S	0	0
			27	15	6	5	1		
4	B	1	Total	C	N	O	S	0	0
			27	15	6	5	1		

- Molecule 5 is methyl (1R,2R,4S)-2-ethyl-2,5,7-trihydroxy-6,11-dioxo-4-{[2,3,6-trideoxy-3-(dimethylamino)-alpha-L-lyxo-hexopyranosyl]oxy}-1,2,3,4,6,11-hexahydrotetracene-1-carboxylate (CCD ID: 3VL) (formula: C₃₀H₃₅NO₁₀) (labeled as "Ligand of Interest" by depositor).



Mol	Chain	Residues	Atoms			ZeroOcc	AltConf	
			Total	C	N			O
5	A	1	41	30	1	10	0	0
5	B	1	41	30	1	10	0	0

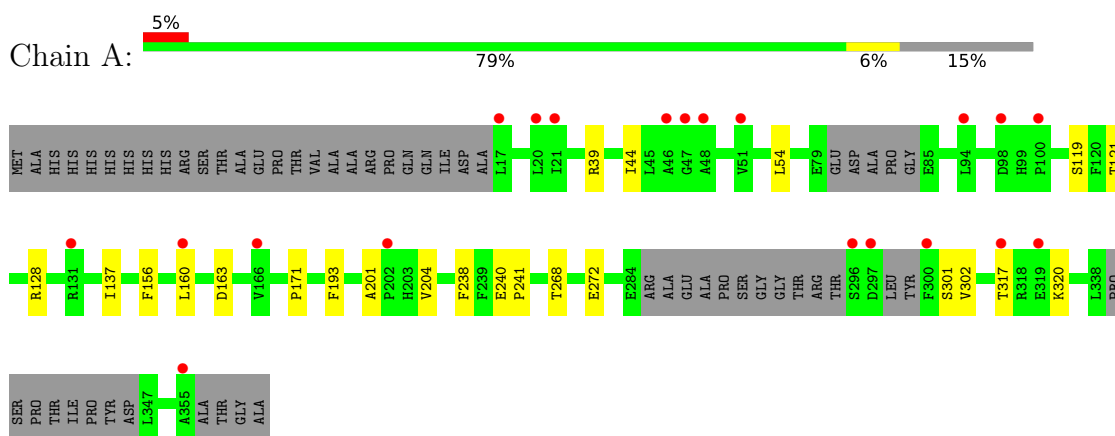
- Molecule 6 is water.

Mol	Chain	Residues	Atoms		ZeroOcc	AltConf
			Total	O		
6	A	168	168	168	0	0
6	B	166	166	166	0	0

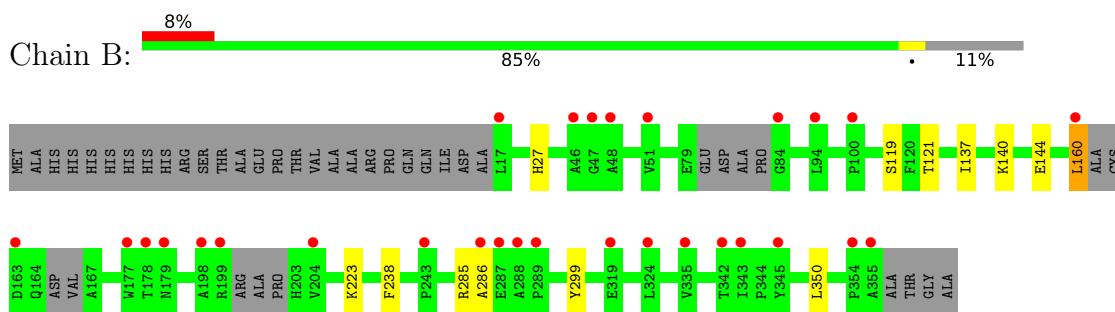
3 Residue-property plots [i](#)

These plots are drawn for all protein, RNA, DNA and oligosaccharide chains in the entry. The first graphic for a chain summarises the proportions of the various outlier classes displayed in the second graphic. The second graphic shows the sequence view annotated by issues in geometry and electron density. Residues are color-coded according to the number of geometric quality criteria for which they contain at least one outlier: green = 0, yellow = 1, orange = 2 and red = 3 or more. A red dot above a residue indicates a poor fit to the electron density ($RSRZ > 2$). Stretches of 2 or more consecutive residues without any outlier are shown as a green connector. Residues present in the sample, but not in the model, are shown in grey.

- Molecule 1: Carminomycin 4-O-methyltransferase DnrK, Methyltransferase domain-containing protein



- Molecule 1: Carminomycin 4-O-methyltransferase DnrK, Methyltransferase domain-containing protein



4 Data and refinement statistics

Property	Value	Source
Space group	P 1 21 1	Depositor
Cell constants a, b, c, α , β , γ	60.51Å 101.32Å 62.97Å 90.00° 102.29° 90.00°	Depositor
Resolution (Å)	48.04 – 1.53 48.04 – 1.53	Depositor EDS
% Data completeness (in resolution range)	98.1 (48.04-1.53) 98.1 (48.04-1.53)	Depositor EDS
R_{merge}	0.06	Depositor
R_{sym}	(Not available)	Depositor
$\langle I/\sigma(I) \rangle$ ¹	1.53 (at 1.53Å)	Xtrriage
Refinement program	PHENIX 1.19.2_4158, PHENIX 1.19.2_4158	Depositor
R, R_{free}	0.221 , 0.238 0.220 , 0.237	Depositor DCC
R_{free} test set	1996 reflections (1.79%)	wwPDB-VP
Wilson B-factor (Å ²)	18.2	Xtrriage
Anisotropy	0.280	Xtrriage
Bulk solvent k_{sol} (e/Å ³), B_{sol} (Å ²)	0.39 , 35.8	EDS
L-test for twinning ²	$\langle L \rangle = 0.48$, $\langle L^2 \rangle = 0.31$	Xtrriage
Estimated twinning fraction	0.019 for l,-k,h	Xtrriage
F_o, F_c correlation	0.94	EDS
Total number of atoms	5280	wwPDB-VP
Average B, all atoms (Å ²)	21.0	wwPDB-VP

Xtrriage's analysis on translational NCS is as follows: *The largest off-origin peak in the Patterson function is 14.65% of the height of the origin peak. No significant pseudotranslation is detected.*

¹Intensities estimated from amplitudes.

²Theoretical values of $\langle |L| \rangle$, $\langle L^2 \rangle$ for acentric reflections are 0.5, 0.333 respectively for untwinned datasets, and 0.375, 0.2 for perfectly twinned datasets.

5 Model quality [i](#)

5.1 Standard geometry [i](#)

Bond lengths and bond angles in the following residue types are not validated in this section: SO4, SAM, 3VL, GOL

The Z score for a bond length (or angle) is the number of standard deviations the observed value is removed from the expected value. A bond length (or angle) with $|Z| > 5$ is considered an outlier worth inspection. RMSZ is the root-mean-square of all Z scores of the bond lengths (or angles).

Mol	Chain	Bond lengths		Bond angles	
		RMSZ	# Z >5	RMSZ	# Z >5
1	A	0.48	0/2389	0.67	1/3255 (0.0%)
1	B	0.51	0/2479	0.68	0/3385
All	All	0.49	0/4868	0.67	1/6640 (0.0%)

There are no bond length outliers.

All (1) bond angle outliers are listed below:

Mol	Chain	Res	Type	Atoms	Z	Observed(°)	Ideal(°)
1	A	301	SER	N-CA-C	-5.13	105.87	111.82

There are no chirality outliers.

There are no planarity outliers.

5.2 Too-close contacts [i](#)

In the following table, the Non-H and H(model) columns list the number of non-hydrogen atoms and hydrogen atoms in the chain respectively. The H(added) column lists the number of hydrogen atoms added and optimized by MolProbity. The Clashes column lists the number of clashes within the asymmetric unit, whereas Symm-Clashes lists symmetry-related clashes.

Mol	Chain	Non-H	H(model)	H(added)	Clashes	Symm-Clashes
1	A	2341	0	2344	18	0
1	B	2431	0	2403	16	0
2	A	15	0	0	0	0
2	B	5	0	0	0	0
3	A	6	0	8	0	0
3	B	12	0	16	1	0
4	A	27	0	22	6	0
4	B	27	0	22	2	0

Continued on next page...

Continued from previous page...

Mol	Chain	Non-H	H(model)	H(added)	Clashes	Symm-Clashes
5	A	41	0	34	3	0
5	B	41	0	34	7	0
6	A	168	0	0	2	0
6	B	166	0	0	2	0
All	All	5280	0	4883	35	0

The all-atom clashscore is defined as the number of clashes found per 1000 atoms (including hydrogen atoms). The all-atom clashscore for this structure is 4.

All (35) close contacts within the same asymmetric unit are listed below, sorted by their clash magnitude.

Atom-1	Atom-2	Interatomic distance (Å)	Clash overlap (Å)
1:B:140:LYS:HD3	1:B:144:GLU:HG2	1.66	0.78
1:B:299:TYR:OH	5:B:405:3VL:H1	1.88	0.72
1:B:299:TYR:OH	5:B:405:3VL:C1	2.37	0.72
1:A:160:LEU:HD22	4:A:405:SAM:HE3	1.73	0.70
1:B:160:LEU:HD12	4:B:404:SAM:HE3	1.76	0.67
1:B:299:TYR:CZ	5:B:405:3VL:H11	2.32	0.65
4:A:405:SAM:OXT	5:A:406:3VL:H34	1.98	0.64
1:B:299:TYR:CE2	5:B:405:3VL:H11	2.36	0.61
1:A:317:THR:H	1:A:320:LYS:HZ3	1.48	0.60
1:A:39:ARG:NH2	6:A:503:HOH:O	2.37	0.57
1:A:156:PHE:HE2	4:A:405:SAM:HE1	1.70	0.56
1:A:156:PHE:CE2	4:A:405:SAM:HE1	2.43	0.54
1:A:160:LEU:HD22	4:A:405:SAM:CE	2.37	0.54
1:A:128:ARG:NH2	6:A:506:HOH:O	2.41	0.53
1:B:160:LEU:O	5:B:405:3VL:C29	2.58	0.52
1:B:27:HIS:HE1	6:B:640:HOH:O	1.93	0.52
1:B:119:SER:HA	1:B:137:ILE:HD12	1.92	0.51
1:B:285:ARG:HH12	3:B:403:GOL:H2	1.75	0.51
1:A:317:THR:OG1	1:A:320:LYS:HD3	2.11	0.51
1:A:201:ALA:O	1:A:204:VAL:HG22	2.11	0.50
1:B:160:LEU:HD12	4:B:404:SAM:CE	2.41	0.50
1:A:317:THR:HG23	1:A:320:LYS:HZ3	1.77	0.50
1:A:302:VAL:HG22	1:B:27:HIS:CD2	2.47	0.49
5:B:405:3VL:H23	5:B:405:3VL:H7	1.94	0.48
1:B:160:LEU:O	5:B:405:3VL:H32	2.16	0.46
1:A:171:PRO:HB2	1:A:193:PHE:CZ	2.51	0.45
1:B:286:ALA:HB2	1:B:350:LEU:HD11	1.99	0.45
1:A:268:THR:O	1:A:272:GLU:HG3	2.17	0.44
1:A:119:SER:HA	1:A:137:ILE:HD12	2.00	0.44

Continued on next page...

Continued from previous page...

Atom-1	Atom-2	Interatomic distance (Å)	Clash overlap (Å)
1:A:121:THR:HG21	1:B:121:THR:HG21	2.00	0.43
1:A:44:ILE:HG12	1:A:54:LEU:HD11	2.01	0.43
4:A:405:SAM:OXT	5:A:406:3VL:C30	2.65	0.43
1:A:240:GLU:HB3	1:A:241:PRO:HD2	2.03	0.41
1:A:163:ASP:OD2	5:A:406:3VL:H25	2.22	0.40
1:B:223:LYS:NZ	6:B:507:HOH:O	2.54	0.40

There are no symmetry-related clashes.

5.3 Torsion angles [i](#)

5.3.1 Protein backbone [i](#)

In the following table, the Percentiles column shows the percent Ramachandran outliers of the chain as a percentile score with respect to all X-ray entries followed by that with respect to entries of similar resolution.

The Analysed column shows the number of residues for which the backbone conformation was analysed, and the total number of residues.

Mol	Chain	Analysed	Favoured	Allowed	Outliers	Percentiles	
1	A	304/369 (82%)	301 (99%)	3 (1%)	0	100	100
1	B	318/369 (86%)	313 (98%)	5 (2%)	0	100	100
All	All	622/738 (84%)	614 (99%)	8 (1%)	0	100	100

There are no Ramachandran outliers to report.

5.3.2 Protein sidechains [i](#)

In the following table, the Percentiles column shows the percent sidechain outliers of the chain as a percentile score with respect to all X-ray entries followed by that with respect to entries of similar resolution.

The Analysed column shows the number of residues for which the sidechain conformation was analysed, and the total number of residues.

Mol	Chain	Analysed	Rotameric	Outliers	Percentiles	
1	A	230/290 (79%)	229 (100%)	1 (0%)	84	70
1	B	240/290 (83%)	238 (99%)	2 (1%)	73	51

Continued on next page...

Continued from previous page...

Mol	Chain	Analysed	Rotameric	Outliers	Percentiles
All	All	470/580 (81%)	467 (99%)	3 (1%)	78 59

All (3) residues with a non-rotameric sidechain are listed below:

Mol	Chain	Res	Type
1	A	238	PHE
1	B	160	LEU
1	B	238	PHE

Sometimes sidechains can be flipped to improve hydrogen bonding and reduce clashes. All (1) such sidechains are listed below:

Mol	Chain	Res	Type
1	B	257	ASN

5.3.3 RNA [i](#)

There are no RNA molecules in this entry.

5.4 Non-standard residues in protein, DNA, RNA chains [i](#)

There are no non-standard protein/DNA/RNA residues in this entry.

5.5 Carbohydrates [i](#)

There are no oligosaccharides in this entry.

5.6 Ligand geometry [i](#)

11 ligands are modelled in this entry.

In the following table, the Counts columns list the number of bonds (or angles) for which Mogul statistics could be retrieved, the number of bonds (or angles) that are observed in the model and the number of bonds (or angles) that are defined in the Chemical Component Dictionary. The Link column lists molecule types, if any, to which the group is linked. The Z score for a bond length (or angle) is the number of standard deviations the observed value is removed from the expected value. A bond length (or angle) with $|Z| > 2$ is considered an outlier worth inspection. RMSZ is the root-mean-square of all Z scores of the bond lengths (or angles).

Mol	Type	Chain	Res	Link	Bond lengths			Bond angles		
					Counts	RMSZ	# Z > 2	Counts	RMSZ	# Z > 2
3	GOL	B	403	-	5,5,5	0.89	0	5,5,5	0.97	0
5	3VL	A	406	-	44,45,45	2.58	9 (20%)	63,70,70	1.25	6 (9%)
2	SO4	A	401	-	4,4,4	0.22	0	6,6,6	0.12	0
4	SAM	A	405	-	27,29,29	0.86	0	34,42,42	1.81	8 (23%)
3	GOL	A	404	-	5,5,5	0.69	0	5,5,5	1.12	1 (20%)
2	SO4	A	402	-	4,4,4	0.35	0	6,6,6	0.29	0
5	3VL	B	405	-	44,45,45	2.52	9 (20%)	63,70,70	1.31	8 (12%)
2	SO4	B	401	-	4,4,4	0.23	0	6,6,6	0.14	0
4	SAM	B	404	-	27,29,29	1.02	2 (7%)	34,42,42	1.92	11 (32%)
2	SO4	A	403	-	4,4,4	0.22	0	6,6,6	0.28	0
3	GOL	B	402	-	5,5,5	0.87	0	5,5,5	1.24	0

In the following table, the Chirals column lists the number of chiral outliers, the number of chiral centers analysed, the number of these observed in the model and the number defined in the Chemical Component Dictionary. Similar counts are reported in the Torsion and Rings columns. '-' means no outliers of that kind were identified.

Mol	Type	Chain	Res	Link	Chirals	Torsions	Rings
3	GOL	B	403	-	-	2/4/4/4	-
5	3VL	A	406	-	-	3/17/68/68	0/5/5/5
4	SAM	A	405	-	-	3/17/33/33	0/3/3/3
3	GOL	A	404	-	-	0/4/4/4	-
5	3VL	B	405	-	-	1/17/68/68	0/5/5/5
4	SAM	B	404	-	-	4/17/33/33	0/3/3/3
3	GOL	B	402	-	-	3/4/4/4	-

All (20) bond length outliers are listed below:

Mol	Chain	Res	Type	Atoms	Z	Observed(Å)	Ideal(Å)
5	A	406	3VL	C5-C6	-9.80	1.41	1.52
5	B	405	3VL	C8-C5	-8.86	1.40	1.52
5	A	406	3VL	C8-C5	-8.64	1.40	1.52
5	B	405	3VL	C5-C6	-8.60	1.42	1.52
5	B	405	3VL	C21-C22	-6.17	1.41	1.51
5	A	406	3VL	C21-C22	-6.08	1.41	1.51
5	A	406	3VL	C12-C11	-4.48	1.39	1.48
5	B	405	3VL	C12-C11	-4.03	1.40	1.48
5	A	406	3VL	C10-C11	-3.98	1.40	1.48
5	B	405	3VL	C10-C11	-3.96	1.40	1.48
5	B	405	3VL	C17-C18	-3.73	1.39	1.47

Continued on next page...

Continued from previous page...

Mol	Chain	Res	Type	Atoms	Z	Observed(Å)	Ideal(Å)
5	B	405	3VL	C19-C18	-3.31	1.40	1.47
5	A	406	3VL	C17-C18	-3.07	1.40	1.47
5	A	406	3VL	C19-C18	-3.05	1.40	1.47
4	B	404	SAM	C8-N7	2.74	1.36	1.31
5	B	405	3VL	O8-C23	2.39	1.48	1.41
5	A	406	3VL	O8-C23	2.22	1.47	1.41
4	B	404	SAM	C2-N1	2.17	1.37	1.33
5	A	406	3VL	C4-C3	2.15	1.55	1.53
5	B	405	3VL	O9-C23	2.08	1.47	1.42

All (34) bond angle outliers are listed below:

Mol	Chain	Res	Type	Atoms	Z	Observed(°)	Ideal(°)
4	A	405	SAM	N3-C2-N1	-6.15	119.28	128.58
4	B	404	SAM	N3-C2-N1	-4.71	121.45	128.58
4	B	404	SAM	N9-C8-N7	-4.71	107.25	113.94
5	B	405	3VL	C3-C4-C22	-4.04	106.43	114.58
5	A	406	3VL	C3-C4-C22	-3.89	106.75	114.58
4	B	404	SAM	C5-N7-C8	3.67	109.22	103.45
4	B	404	SAM	C5-C4-N3	-3.48	121.92	126.72
4	A	405	SAM	C2-N1-C6	3.18	123.96	118.73
4	A	405	SAM	CE-SD-C5'	2.93	123.54	100.54
4	B	404	SAM	C4-C5-N7	-2.87	107.30	110.58
4	A	405	SAM	N9-C8-N7	-2.81	109.95	113.94
4	A	405	SAM	C5-N7-C8	2.62	107.57	103.45
4	A	405	SAM	C2-N3-C4	2.59	118.16	111.83
5	B	405	3VL	C7-O3-C6	-2.56	110.11	115.92
4	A	405	SAM	C4-C5-N7	-2.54	107.68	110.58
5	A	406	3VL	C7-O3-C6	-2.46	110.34	115.92
4	A	405	SAM	C5-C4-N3	-2.45	123.34	126.72
5	B	405	3VL	C2-C3-C4	2.43	117.39	111.45
4	B	404	SAM	CE-SD-C5'	2.43	119.64	100.54
5	A	406	3VL	C2-C3-C4	2.42	117.35	111.45
5	B	405	3VL	O5-C16-C17	-2.36	116.77	121.14
5	B	405	3VL	O8-C22-C21	-2.34	102.27	107.54
4	B	404	SAM	C2-N3-C4	2.31	117.47	111.83
5	A	406	3VL	O10-C27-C28	2.30	114.09	109.87
4	B	404	SAM	C4-N9-C8	2.25	108.10	105.74
5	A	406	3VL	C24-C28-N1	-2.25	109.28	115.59
5	B	405	3VL	C24-C28-N1	-2.20	109.40	115.59
5	A	406	3VL	O8-C23-O9	-2.15	103.04	109.97
3	A	404	GOL	C3-C2-C1	-2.13	104.00	111.80

Continued on next page...

Continued from previous page...

Mol	Chain	Res	Type	Atoms	Z	Observed(°)	Ideal(°)
4	B	404	SAM	C5-C4-N9	2.11	108.11	105.81
4	B	404	SAM	C6-C5-C4	2.11	120.05	117.18
4	B	404	SAM	C2-N1-C6	2.07	122.13	118.73
5	B	405	3VL	C12-C17-C16	2.07	120.33	118.42
5	B	405	3VL	C14-C15-C16	-2.05	117.51	120.05

There are no chirality outliers.

All (16) torsion outliers are listed below:

Mol	Chain	Res	Type	Atoms
3	B	402	GOL	C1-C2-C3-O3
3	B	402	GOL	O2-C2-C3-O3
3	B	403	GOL	C1-C2-C3-O3
3	B	403	GOL	O2-C2-C3-O3
4	A	405	SAM	CB-CG-SD-CE
4	A	405	SAM	C4'-C5'-SD-CE
4	B	404	SAM	CB-CG-SD-CE
4	B	404	SAM	C4'-C5'-SD-CE
5	A	406	3VL	C24-C23-O8-C22
5	A	406	3VL	O9-C23-O8-C22
5	A	406	3VL	C24-C28-N1-C30
5	B	405	3VL	C24-C28-N1-C30
4	A	405	SAM	CB-CG-SD-C5'
4	B	404	SAM	CB-CG-SD-C5'
4	B	404	SAM	O-C-CA-N
3	B	402	GOL	O1-C1-C2-O2

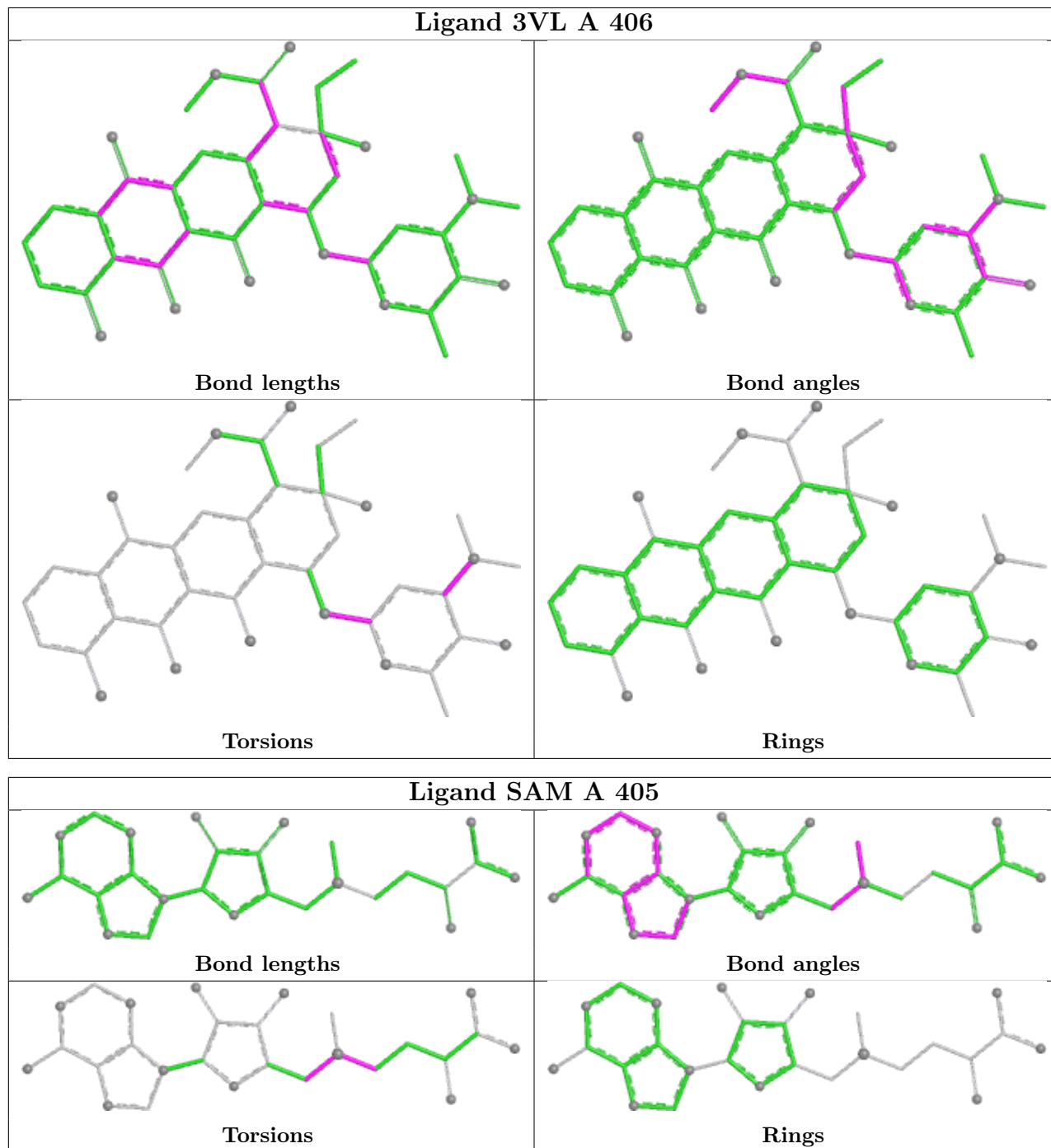
There are no ring outliers.

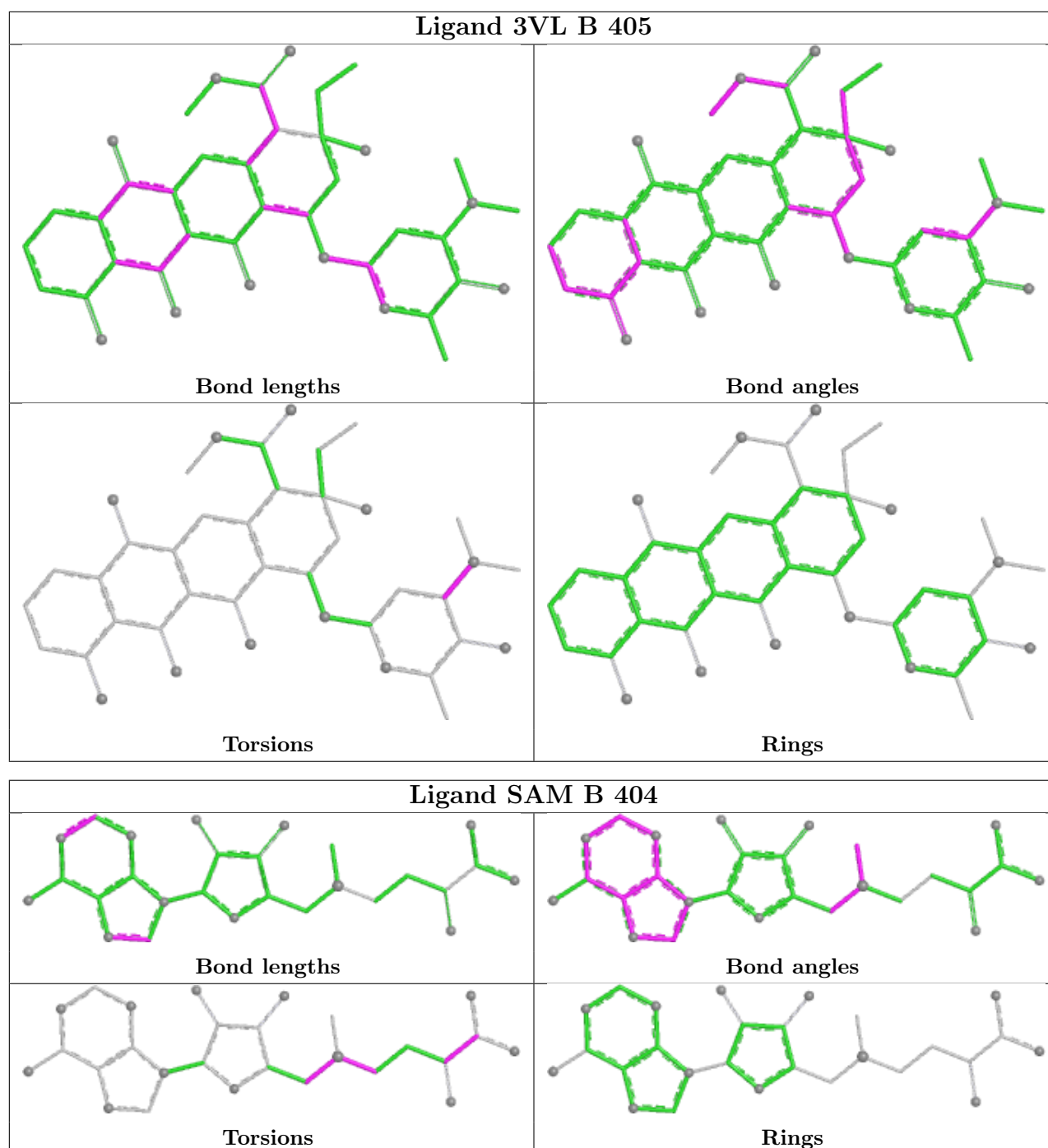
5 monomers are involved in 17 short contacts:

Mol	Chain	Res	Type	Clashes	Symm-Clashes
3	B	403	GOL	1	0
5	A	406	3VL	3	0
4	A	405	SAM	6	0
5	B	405	3VL	7	0
4	B	404	SAM	2	0

The following is a two-dimensional graphical depiction of Mogul quality analysis of bond lengths, bond angles, torsion angles, and ring geometry for all instances of the Ligand of Interest. In addition, ligands with molecular weight > 250 and outliers as shown on the validation Tables will also be included. For torsion angles, if less than 5% of the Mogul distribution of torsion angles is within 10 degrees of the torsion angle in question, then that torsion angle is considered an outlier.

Any bond that is central to one or more torsion angles identified as an outlier by Mogul will be highlighted in the graph. For rings, the root-mean-square deviation (RMSD) between the ring in question and similar rings identified by Mogul is calculated over all ring torsion angles. If the average RMSD is greater than 60 degrees and the minimal RMSD between the ring in question and any Mogul-identified rings is also greater than 60 degrees, then that ring is considered an outlier. The outliers are highlighted in purple. The color gray indicates Mogul did not find sufficient equivalents in the CSD to analyse the geometry.





5.7 Other polymers [i](#)

There are no such residues in this entry.

5.8 Polymer linkage issues [i](#)

There are no chain breaks in this entry.

6 Fit of model and data [i](#)

6.1 Protein, DNA and RNA chains [i](#)

In the following table, the column labelled ‘#RSRZ > 2’ contains the number (and percentage) of RSRZ outliers, followed by percent RSRZ outliers for the chain as percentile scores relative to all X-ray entries and entries of similar resolution. The OWAB column contains the minimum, median, 95th percentile and maximum values of the occupancy-weighted average B-factor per residue. The column labelled ‘Q < 0.9’ lists the number of (and percentage) of residues with an average occupancy less than 0.9.

Mol	Chain	Analysed	<RSRZ>	#RSRZ>2	OWAB(Å ²)	Q<0.9
1	A	313/369 (84%)	0.53	20 (6%) 25 32	11, 19, 29, 35	2 (0%)
1	B	328/369 (88%)	0.75	29 (8%) 15 20	11, 20, 31, 45	0
All	All	641/738 (86%)	0.65	49 (7%) 20 24	11, 19, 30, 45	2 (0%)

All (49) RSRZ outliers are listed below:

Mol	Chain	Res	Type	RSRZ
1	B	289	PRO	4.7
1	B	288	ALA	4.1
1	A	300[A]	PHE	3.9
1	B	160	LEU	3.9
1	A	100	PRO	3.8
1	B	243	PRO	3.7
1	A	17	LEU	3.7
1	B	343	ILE	3.6
1	A	297	ASP	3.3
1	B	48	ALA	3.3
1	B	355	ALA	3.2
1	A	296	SER	3.2
1	B	319	GLU	3.2
1	B	163	ASP	3.1
1	A	355	ALA	3.1
1	B	199	ARG	2.9
1	B	17	LEU	2.9
1	A	47	GLY	2.8
1	B	47	GLY	2.8
1	B	46	ALA	2.8
1	A	131	ARG	2.8
1	A	166	VAL	2.7
1	A	319	GLU	2.6
1	B	335	VAL	2.6

Continued on next page...

Continued from previous page...

Mol	Chain	Res	Type	RSRZ
1	B	84	GLY	2.6
1	B	100	PRO	2.5
1	B	286	ALA	2.5
1	B	179	ASN	2.5
1	B	204	VAL	2.5
1	B	342	THR	2.4
1	A	46	ALA	2.4
1	B	94	LEU	2.4
1	B	324	LEU	2.4
1	B	198	ALA	2.3
1	B	287	GLU	2.3
1	A	317	THR	2.3
1	A	160	LEU	2.3
1	A	48	ALA	2.2
1	A	94	LEU	2.2
1	A	202	PRO	2.2
1	B	178	THR	2.2
1	A	51	VAL	2.2
1	A	20	LEU	2.1
1	B	345	TYR	2.1
1	B	177	TRP	2.1
1	B	354	PRO	2.1
1	A	21	ILE	2.0
1	B	51	VAL	2.0
1	A	98	ASP	2.0

6.2 Non-standard residues in protein, DNA, RNA chains [i](#)

There are no non-standard protein/DNA/RNA residues in this entry.

6.3 Carbohydrates [i](#)

There are no oligosaccharides in this entry.

6.4 Ligands [i](#)

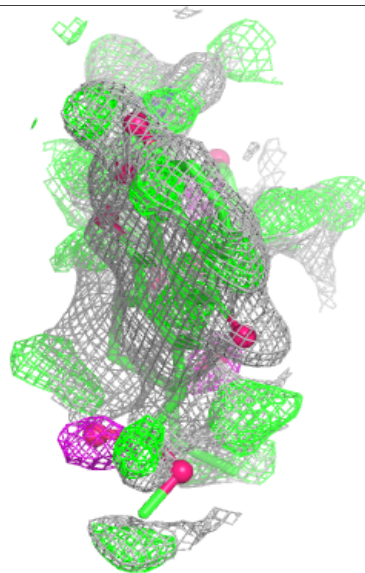
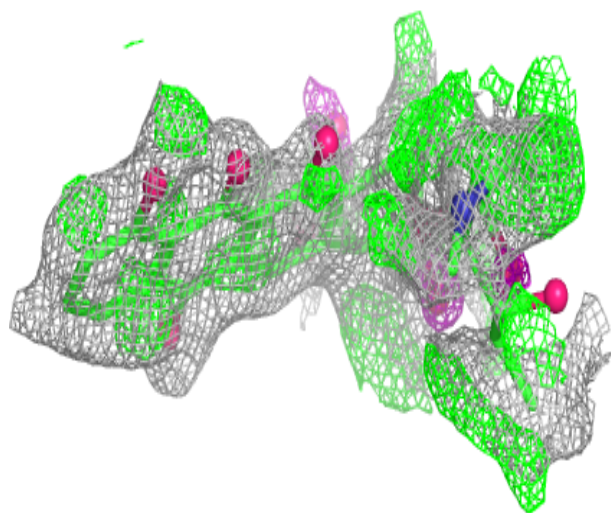
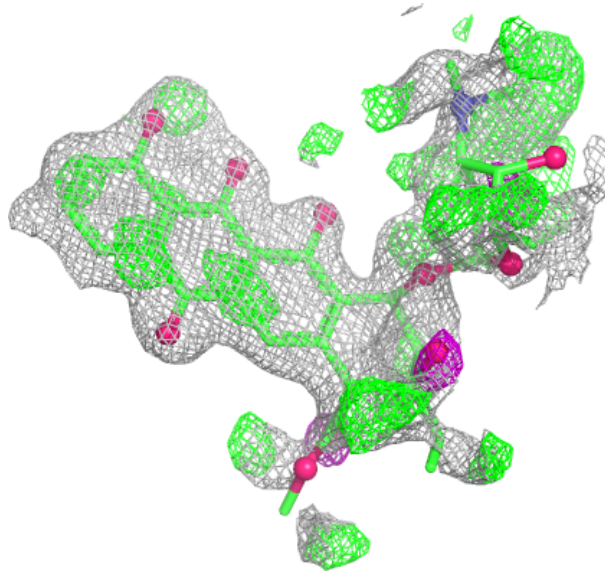
In the following table, the Atoms column lists the number of modelled atoms in the group and the number defined in the chemical component dictionary. The B-factors column lists the minimum, median, 95th percentile and maximum values of B factors of atoms in the group. The column labelled 'Q < 0.9' lists the number of atoms with occupancy less than 0.9.

Mol	Type	Chain	Res	Atoms	RSCC	RSR	B-factors(\AA^2)	Q<0.9
5	3VL	A	406	41/41	0.54	0.33	21,35,46,47	41
5	3VL	B	405	41/41	0.69	0.26	16,41,56,57	41
2	SO4	A	401	5/5	0.79	0.14	41,55,62,68	0
3	GOL	B	402	6/6	0.79	0.18	25,30,33,35	6
2	SO4	B	401	5/5	0.84	0.12	39,51,60,65	0
2	SO4	A	402	5/5	0.84	0.16	32,38,49,53	0
3	GOL	B	403	6/6	0.85	0.13	37,41,46,51	0
2	SO4	A	403	5/5	0.89	0.12	28,38,47,53	0
3	GOL	A	404	6/6	0.90	0.12	18,34,37,38	0
4	SAM	A	405	27/27	0.97	0.07	9,12,19,38	0
4	SAM	B	404	27/27	0.97	0.06	11,13,18,38	0

The following is a graphical depiction of the model fit to experimental electron density of all instances of the Ligand of Interest. In addition, ligands with molecular weight > 250 and outliers as shown on the geometry validation Tables will also be included. Each fit is shown from different orientation to approximate a three-dimensional view.

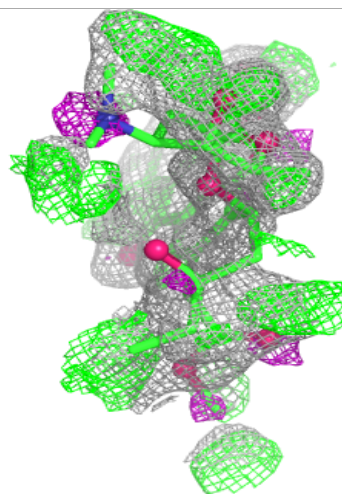
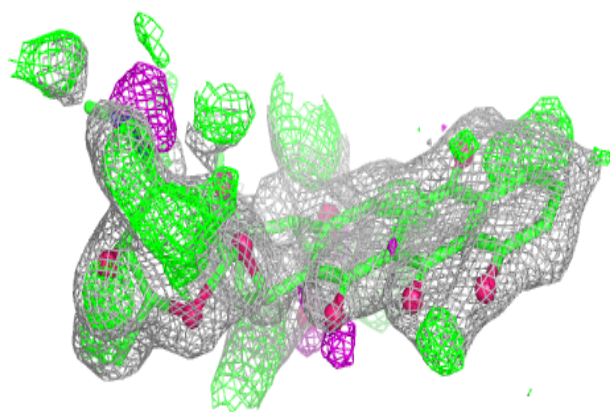
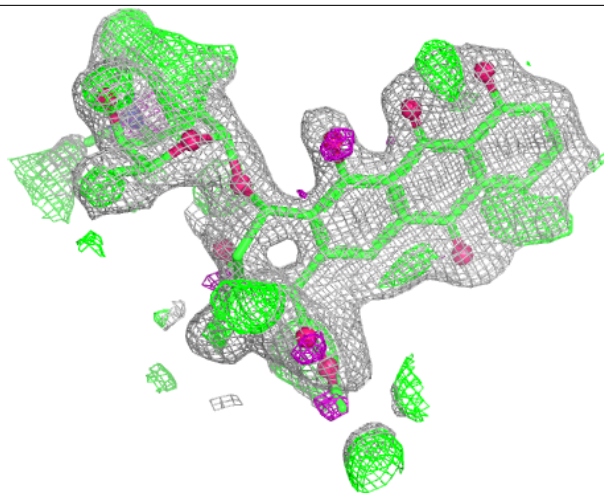
Electron density around 3VL A 406:

$2mF_o-DF_c$ (at 0.7 rmsd) in gray
 mF_o-DF_c (at 3 rmsd) in purple (negative)
and green (positive)



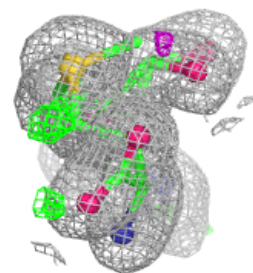
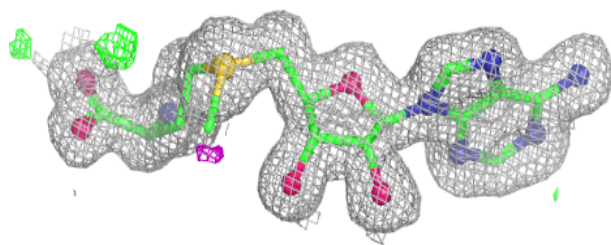
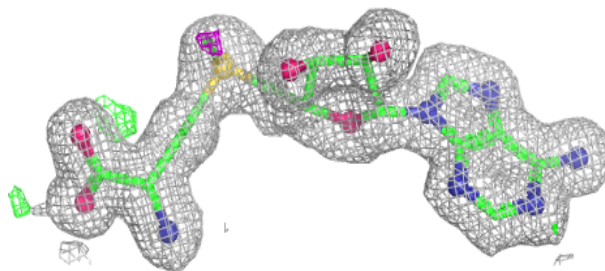
Electron density around 3VL B 405:

$2mF_o-DF_c$ (at 0.7 rmsd) in gray
 mF_o-DF_c (at 3 rmsd) in purple (negative)
and green (positive)

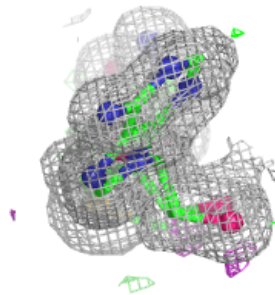
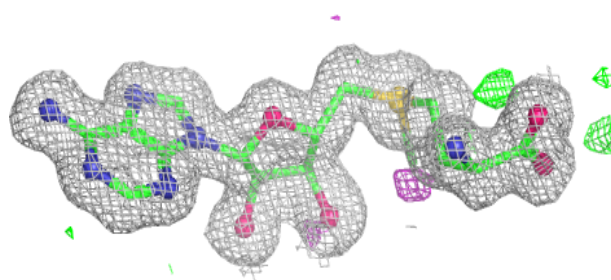
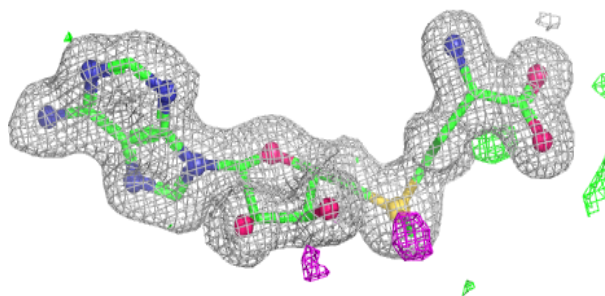


Electron density around SAM A 405:

$2mF_o-DF_c$ (at 0.7 rmsd) in gray
 mF_o-DF_c (at 3 rmsd) in purple (negative)
and green (positive)

**Electron density around SAM B 404:**

$2mF_o-DF_c$ (at 0.7 rmsd) in gray
 mF_o-DF_c (at 3 rmsd) in purple (negative)
and green (positive)



6.5 Other polymers [i](#)

There are no such residues in this entry.