



wwPDB X-ray Structure Validation Summary Report ⓘ

Mar 4, 2026 – 07:31 PM UTC

PDB ID : 3PL9 / pdb_00003pl9
Title : Crystal structure of spinach minor light-harvesting complex CP29 at 2.80 angstrom resolution
Authors : Pan, X.W.; Li, M.; Wan, T.; Wang, L.F.; Jia, C.J.; Hou, Z.Q.; Zhao, X.L.; Zhang, J.P.; Chang, W.R.
Deposited on : 2010-11-14
Resolution : 2.80 Å(reported)

This is a wwPDB X-ray Structure Validation Summary Report for a publicly released PDB entry.

We welcome your comments at validation@mail.wwpdb.org

A user guide is available at

<https://www.wwpdb.org/validation/2017/XrayValidationReportHelp>

with specific help available everywhere you see the ⓘ symbol.

The types of validation reports are described at

<http://www.wwpdb.org/validation/2017/FAQs#types>.

The following versions of software and data (see [references ⓘ](#)) were used in the production of this report:

MolProbity : 4-5-2 with Phenix2.0
Mogul : 2022.3.0, CSD as543be (2022)
Xtrriage (Phenix) : 2.0
EDS : 3.0
Buster-report : wwPDB partial adaption of 1.1.7 (2018)
Percentile statistics : 20250101.v01 (using entries in the PDB archive January 1st 2025)
CCP4 : 9.0.010 (Gargrove)
Density-Fitness : 1.0.12
Ideal geometry (proteins) : Engh & Huber (2001)
Ideal geometry (DNA, RNA) : Parkinson et al. (1996)
Validation Pipeline (wwPDB-VP) : 2.49

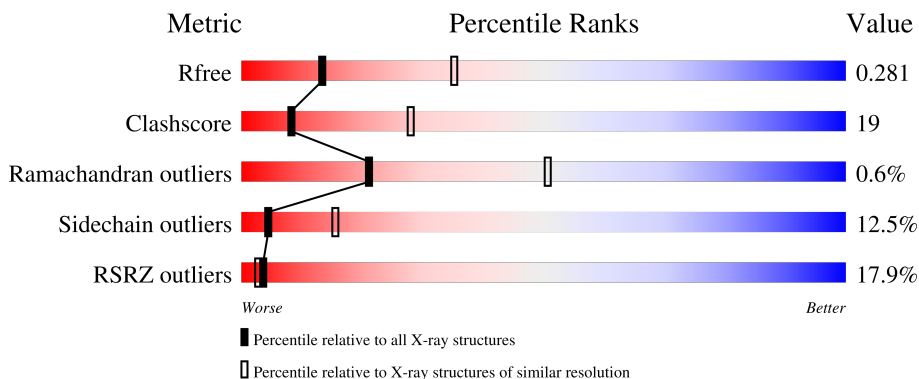
1 Overall quality at a glance

The following experimental techniques were used to determine the structure:

X-RAY DIFFRACTION

The reported resolution of this entry is 2.80 Å.

Percentile scores (ranging between 0-100) for global validation metrics of the entry are shown in the following graphic. The table shows the number of entries on which the scores are based.



Metric	Whole archive (#Entries)	Similar resolution (#Entries, resolution range(Å))
R_{free}	180053	3866 (2.80-2.80)
Clashscore	190562	4276 (2.80-2.80)
Ramachandran outliers	187476	4196 (2.80-2.80)
Sidechain outliers	187428	4198 (2.80-2.80)
RSRZ outliers	180081	3869 (2.80-2.80)

The table below summarises the geometric issues observed across the polymeric chains and their fit to the electron density. The red, orange, yellow and green segments of the lower bar indicate the fraction of residues that contain outliers for ≥ 3 , 2, 1 and 0 types of geometric quality criteria respectively. A grey segment represents the fraction of residues that are not modelled. The numeric value for each fraction is indicated below the corresponding segment, with a dot representing fractions $\leq 5\%$. The upper red bar (where present) indicates the fraction of residues that have poor fit to the electron density. The numeric value is given above the bar.

Mol	Chain	Length	Quality of chain
1	A	243	

The following table lists non-polymeric compounds, carbohydrate monomers and non-standard residues in protein, DNA, RNA chains that are outliers for geometric or electron-density-fit criteria:

Mol	Type	Chain	Res	Chirality	Geometry	Clashes	Electron density
2	CLA	A	602	X	-	-	-
2	CLA	A	603	X	-	-	-
2	CLA	A	604	X	-	-	-
2	CLA	A	609	X	-	-	-
2	CLA	A	610	X	-	-	-
2	CLA	A	611	X	-	-	-
2	CLA	A	612	X	-	-	-
2	CLA	A	613	X	-	-	-
2	CLA	A	615	X	-	-	-
3	CHL	A	606	X	-	-	-
3	CHL	A	607	X	-	-	-
3	CHL	A	608	X	-	-	-
3	CHL	A	614	X	-	-	-

2 Entry composition [i](#)

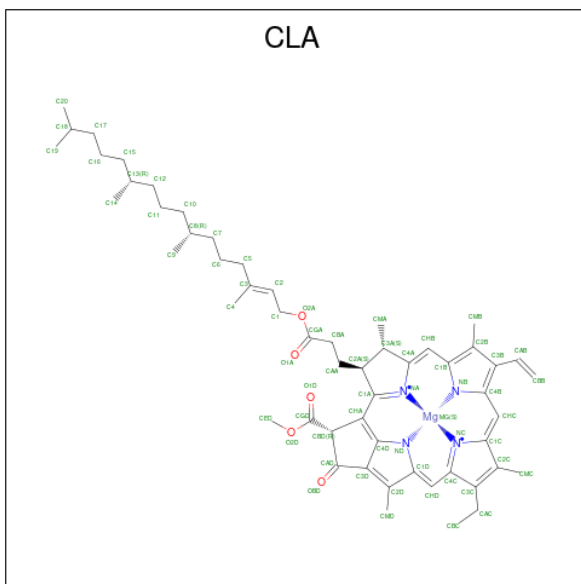
There are 9 unique types of molecules in this entry. The entry contains 2317 atoms, of which 0 are hydrogens and 0 are deuteriums.

In the tables below, the ZeroOcc column contains the number of atoms modelled with zero occupancy, the AltConf column contains the number of residues with at least one atom in alternate conformation and the Trace column contains the number of residues modelled with at most 2 atoms.

- Molecule 1 is a protein called Chlorophyll A-B binding protein.

Mol	Chain	Residues	Atoms					ZeroOcc	AltConf	Trace
			Total	C	N	O	S			
1	A	156	1217	790	204	219	4	0	0	0

- Molecule 2 is CHLOROPHYLL A (CCD ID: CLA) (formula: $C_{55}H_{72}MgN_4O_5$).



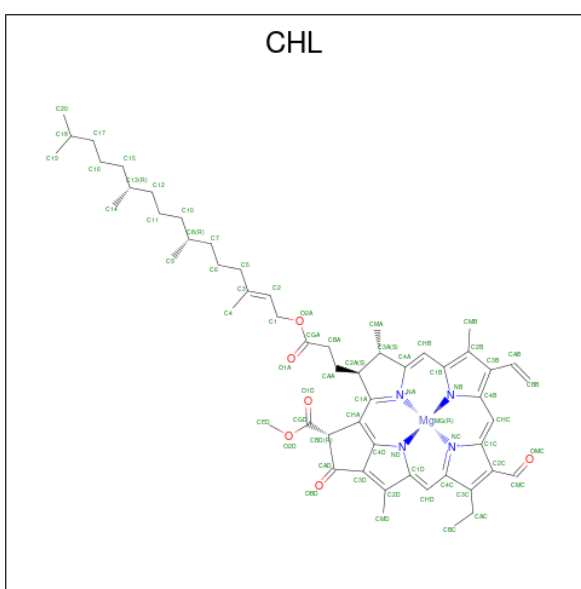
Mol	Chain	Residues	Atoms					ZeroOcc	AltConf
			Total	C	Mg	N	O		
2	A	1	65	55	1	4	5	0	0
2	A	1	65	55	1	4	5	0	0
2	A	1	65	55	1	4	5	0	0
2	A	1	65	55	1	4	5	0	0
2	A	1	65	55	1	4	5	0	0

Continued on next page...

Continued from previous page...

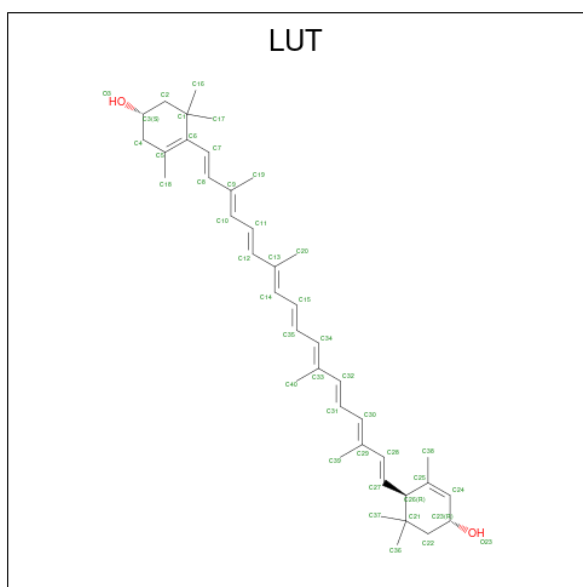
Mol	Chain	Residues	Atoms					ZeroOcc	AltConf
2	A	1	Total	C	Mg	N	O	0	0
			65	55	1	4	5		
2	A	1	Total	C	Mg	N	O	0	0
			65	55	1	4	5		
2	A	1	Total	C	Mg	N	O	0	0
			65	55	1	4	5		
2	A	1	Total	C	Mg	N	O	0	0
			65	55	1	4	5		

- Molecule 3 is CHLOROPHYLL B (CCD ID: CHL) (formula: $C_{55}H_{70}MgN_4O_6$).



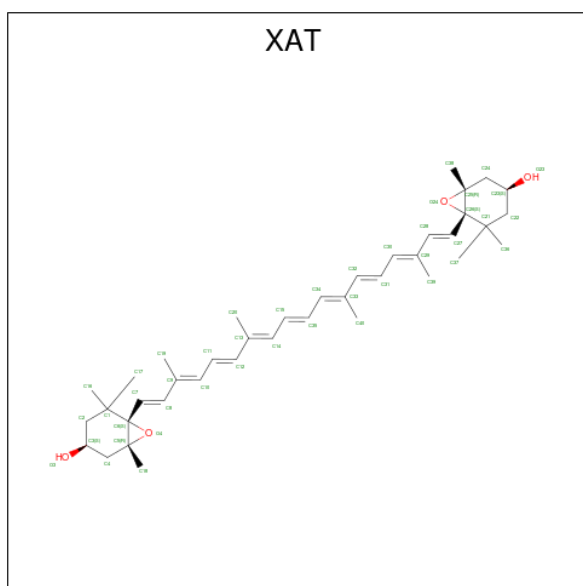
Mol	Chain	Residues	Atoms					ZeroOcc	AltConf
3	A	1	Total	C	Mg	N	O	0	0
			66	55	1	4	6		
3	A	1	Total	C	Mg	N	O	0	0
			66	55	1	4	6		
3	A	1	Total	C	Mg	N	O	0	0
			66	55	1	4	6		
3	A	1	Total	C	Mg	N	O	0	0
			66	55	1	4	6		

- Molecule 4 is (3R,3'R,6S)-4,5-DIDEHYDRO-5,6-DIHYDRO-BETA,BETA-CAROTENE-3,3'-DIOL (CCD ID: LUT) (formula: $C_{40}H_{56}O_2$).



Mol	Chain	Residues	Atoms		ZeroOcc	AltConf	
4	A	1	Total	C	O	0	0
			42	40	2		

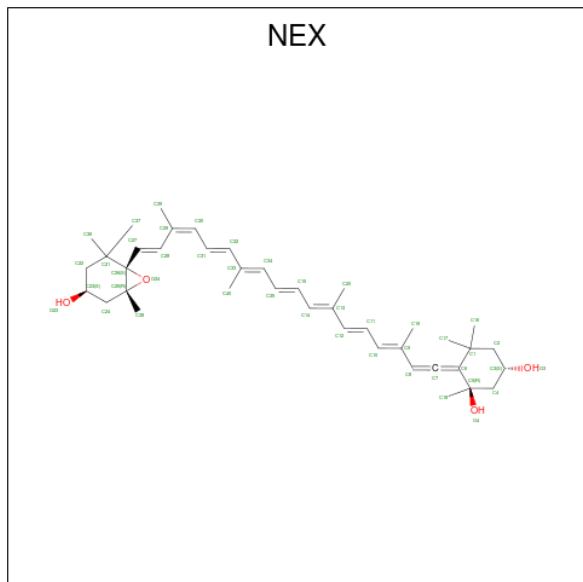
- Molecule 5 is (3S,5R,6S,3'S,5'R,6'S)-5,6,5',6'-DIEPOXY-5,6,5',6'- TETRAHYDRO-BETA, BETA-CAROTENE-3,3'-DIOL (CCD ID: XAT) (formula: $C_{40}H_{56}O_4$).



Mol	Chain	Residues	Atoms		ZeroOcc	AltConf	
5	A	1	Total	C	O	0	0
			44	40	4		

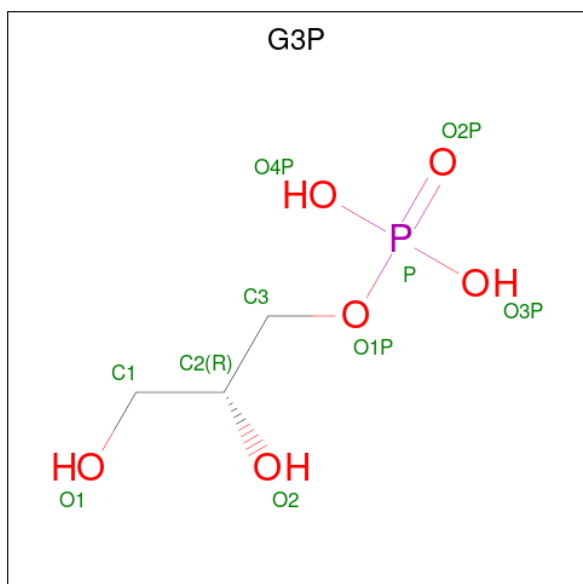
- Molecule 6 is (1R,3R)-6-[(3E,5E,7E,9E,11E,13E,15E,17E)-18-[(1S,4R,6R)-4-HYDROXY-2,2,6-TRIMETHYL-7-OXABICYCLO[4.1.0]HEPT-1-YL]-3,7,12,16-TETRAMETHYLOCTA

DECA-1,3,5,7,9,11,13,15,17-NONAENYLIDENE}-1,5,5-TRIMETHYLCYCLOHEXANE-1,3-DIOL (CCD ID: NEX) (formula: $C_{40}H_{56}O_4$).



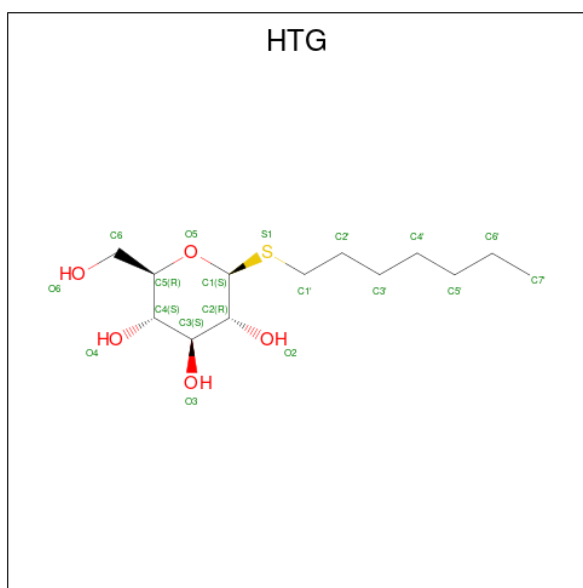
Mol	Chain	Residues	Atoms			ZeroOcc	AltConf
			Total	C	O		
6	A	1	44	40	4	0	0

- Molecule 7 is SN-GLYCEROL-3-PHOSPHATE (CCD ID: G3P) (formula: $C_3H_9O_6P$).



Mol	Chain	Residues	Atoms				ZeroOcc	AltConf
			Total	C	O	P		
7	A	1	10	3	6	1	0	0

- Molecule 8 is heptyl 1-thio-beta-D-glucopyranoside (CCD ID: HTG) (formula: C₁₃H₂₆O₅S).



Mol	Chain	Residues	Atoms				ZeroOcc	AltConf
8	A	1	Total	C	O	S	0	0
			17	13	3	1		
8	A	1	Total	C	O	S	0	0
			15	9	5	1		

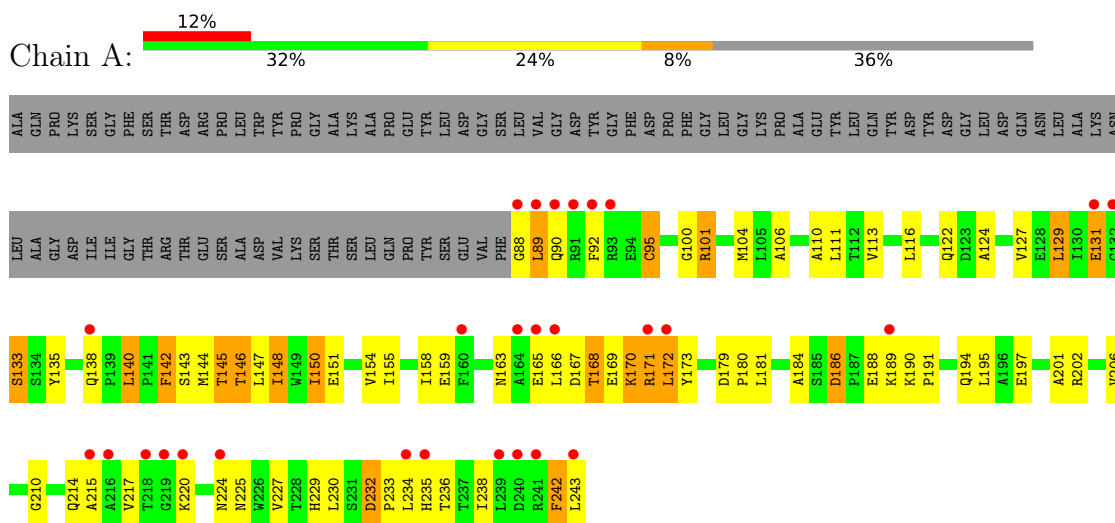
- Molecule 9 is water.

Mol	Chain	Residues	Atoms		ZeroOcc	AltConf
9	A	79	Total	O	0	0
			79	79		

3 Residue-property plots [i](#)

These plots are drawn for all protein, RNA, DNA and oligosaccharide chains in the entry. The first graphic for a chain summarises the proportions of the various outlier classes displayed in the second graphic. The second graphic shows the sequence view annotated by issues in geometry and electron density. Residues are color-coded according to the number of geometric quality criteria for which they contain at least one outlier: green = 0, yellow = 1, orange = 2 and red = 3 or more. A red dot above a residue indicates a poor fit to the electron density ($RSRZ > 2$). Stretches of 2 or more consecutive residues without any outlier are shown as a green connector. Residues present in the sample, but not in the model, are shown in grey.

- Molecule 1: Chlorophyll A-B binding protein



4 Data and refinement statistics

Property	Value	Source
Space group	P 65 2 2	Depositor
Cell constants a, b, c, α , β , γ	68.79Å 68.79Å 425.78Å 90.00° 90.00° 120.00°	Depositor
Resolution (Å)	42.56 – 2.80 42.56 – 2.80	Depositor EDS
% Data completeness (in resolution range)	92.4 (42.56-2.80) 92.4 (42.56-2.80)	Depositor EDS
R_{merge}	0.11	Depositor
R_{sym}	(Not available)	Depositor
$\langle I/\sigma(I) \rangle$ ¹	5.41 (at 2.81Å)	Xtrriage
Refinement program	CNS 1.2	Depositor
R, R_{free}	0.282 , 0.293 0.276 , 0.281	Depositor DCC
R_{free} test set	738 reflections (4.44%)	wwPDB-VP
Wilson B-factor (Å ²)	50.9	Xtrriage
Anisotropy	0.137	Xtrriage
Bulk solvent k_{sol} (e/Å ³), B_{sol} (Å ²)	0.29 , 73.3	EDS
L-test for twinning ²	$\langle L \rangle = 0.50$, $\langle L^2 \rangle = 0.33$	Xtrriage
Estimated twinning fraction	No twinning to report.	Xtrriage
F_o, F_c correlation	0.88	EDS
Total number of atoms	2317	wwPDB-VP
Average B, all atoms (Å ²)	57.0	wwPDB-VP

Xtrriage's analysis on translational NCS is as follows: *The largest off-origin peak in the Patterson function is 7.27% of the height of the origin peak. No significant pseudotranslation is detected.*

¹Intensities estimated from amplitudes.

²Theoretical values of $\langle |L| \rangle$, $\langle L^2 \rangle$ for acentric reflections are 0.5, 0.333 respectively for untwinned datasets, and 0.375, 0.2 for perfectly twinned datasets.

5 Model quality [i](#)

5.1 Standard geometry [i](#)

Bond lengths and bond angles in the following residue types are not validated in this section: HTG, CLA, CHL, NEX, XAT, LUT, G3P

The Z score for a bond length (or angle) is the number of standard deviations the observed value is removed from the expected value. A bond length (or angle) with $|Z| > 5$ is considered an outlier worth inspection. RMSZ is the root-mean-square of all Z scores of the bond lengths (or angles).

Mol	Chain	Bond lengths		Bond angles	
		RMSZ	# Z >5	RMSZ	# Z >5
1	A	0.51	0/1246	1.06	14/1694 (0.8%)

There are no bond length outliers.

The worst 5 of 14 bond angle outliers are listed below:

Mol	Chain	Res	Type	Atoms	Z	Observed(°)	Ideal(°)
1	A	154	VAL	N-CA-C	6.87	117.65	110.72
1	A	133	SER	N-CA-C	-6.75	99.53	110.20
1	A	142	PHE	N-CA-C	6.19	119.02	110.35
1	A	217	VAL	N-CA-C	6.12	117.67	111.00
1	A	232	ASP	CA-C-N	6.06	126.22	119.32

There are no chirality outliers.

There are no planarity outliers.

5.2 Too-close contacts [i](#)

In the following table, the Non-H and H(model) columns list the number of non-hydrogen atoms and hydrogen atoms in the chain respectively. The H(added) column lists the number of hydrogen atoms added and optimized by MolProbity. The Clashes column lists the number of clashes within the asymmetric unit, whereas Symm-Clashes lists symmetry-related clashes.

Mol	Chain	Non-H	H(model)	H(added)	Clashes	Symm-Clashes
1	A	1217	0	1233	75	0
2	A	585	0	647	24	0
3	A	264	0	278	9	0
4	A	42	0	56	4	0
5	A	44	0	55	1	0
6	A	44	0	56	3	0

Continued on next page...

Continued from previous page...

Mol	Chain	Non-H	H(model)	H(added)	Clashes	Symm-Clashes
7	A	10	0	7	0	0
8	A	32	0	37	5	0
9	A	79	0	0	5	0
All	All	2317	0	2369	89	0

The all-atom clashscore is defined as the number of clashes found per 1000 atoms (including hydrogen atoms). The all-atom clashscore for this structure is 19.

The worst 5 of 89 close contacts within the same asymmetric unit are listed below, sorted by their clash magnitude.

Atom-1	Atom-2	Interatomic distance (Å)	Clash overlap (Å)
8:A:632:HTG:O5	8:A:632:HTG:C1	1.64	1.43
1:A:146:THR:O	1:A:150:ILE:HD13	1.78	0.83
1:A:206:VAL:HG11	2:A:615:CLA:H41	1.60	0.82
1:A:151:GLU:HG3	1:A:155:ILE:HD13	1.64	0.80
1:A:220:LYS:HD3	1:A:224:ASN:ND2	1.96	0.79

There are no symmetry-related clashes.

5.3 Torsion angles [i](#)

5.3.1 Protein backbone [i](#)

In the following table, the Percentiles column shows the percent Ramachandran outliers of the chain as a percentile score with respect to all X-ray entries followed by that with respect to entries of similar resolution.

The Analysed column shows the number of residues for which the backbone conformation was analysed, and the total number of residues.

Mol	Chain	Analysed	Favoured	Allowed	Outliers	Percentiles
1	A	154/243 (63%)	141 (92%)	12 (8%)	1 (1%)	21 51

All (1) Ramachandran outliers are listed below:

Mol	Chain	Res	Type
1	A	168	THR

5.3.2 Protein sidechains [i](#)

In the following table, the Percentiles column shows the percent sidechain outliers of the chain as a percentile score with respect to all X-ray entries followed by that with respect to entries of similar resolution.

The Analysed column shows the number of residues for which the sidechain conformation was analysed, and the total number of residues.

Mol	Chain	Analysed	Rotameric	Outliers	Percentiles
1	A	128/198 (65%)	112 (88%)	16 (12%)	4 15

5 of 16 residues with a non-rotameric sidechain are listed below:

Mol	Chain	Res	Type
1	A	242	PHE
1	A	188	GLU
1	A	145	THR
1	A	172	LEU
1	A	138	GLN

Sometimes sidechains can be flipped to improve hydrogen bonding and reduce clashes. All (5) such sidechains are listed below:

Mol	Chain	Res	Type
1	A	138	GLN
1	A	163	ASN
1	A	224	ASN
1	A	225	ASN
1	A	235	HIS

5.3.3 RNA [i](#)

There are no RNA molecules in this entry.

5.4 Non-standard residues in protein, DNA, RNA chains [i](#)

There are no non-standard protein/DNA/RNA residues in this entry.

5.5 Carbohydrates [i](#)

There are no oligosaccharides in this entry.

5.6 Ligand geometry [i](#)

19 ligands are modelled in this entry.

In the following table, the Counts columns list the number of bonds (or angles) for which Mogul statistics could be retrieved, the number of bonds (or angles) that are observed in the model and the number of bonds (or angles) that are defined in the Chemical Component Dictionary. The Link column lists molecule types, if any, to which the group is linked. The Z score for a bond length (or angle) is the number of standard deviations the observed value is removed from the expected value. A bond length (or angle) with $|Z| > 2$ is considered an outlier worth inspection. RMSZ is the root-mean-square of all Z scores of the bond lengths (or angles).

Mol	Type	Chain	Res	Link	Bond lengths			Bond angles		
					Counts	RMSZ	# Z > 2	Counts	RMSZ	# Z > 2
6	NEX	A	623	-	40,46,46	2.10	4 (10%)	50,70,70	1.45	7 (14%)
5	XAT	A	622	-	41,47,47	1.02	2 (4%)	54,74,74	1.51	5 (9%)
8	HTG	A	631	-	17,17,19	3.69	9 (52%)	19,20,24	2.89	5 (26%)
2	CLA	A	613	1	69,73,73	1.28	7 (10%)	82,113,113	1.99	11 (13%)
3	CHL	A	607	9	60,74,74	2.11	13 (21%)	58,114,114	2.95	28 (48%)
2	CLA	A	609	1	69,73,73	1.32	9 (13%)	82,113,113	1.79	15 (18%)
4	LUT	A	620	-	42,43,43	1.08	3 (7%)	51,60,60	1.40	6 (11%)
2	CLA	A	602	1	69,73,73	1.41	6 (8%)	82,113,113	1.90	16 (19%)
2	CLA	A	615	7	69,73,73	1.36	8 (11%)	82,113,113	1.59	14 (17%)
3	CHL	A	614	-	60,74,74	2.06	14 (23%)	58,114,114	2.78	24 (41%)
2	CLA	A	610	1	69,73,73	1.32	6 (8%)	82,113,113	1.94	18 (21%)
2	CLA	A	612	-	69,73,73	1.53	8 (11%)	82,113,113	1.86	16 (19%)
2	CLA	A	604	9	69,73,73	1.34	7 (10%)	82,113,113	2.07	16 (19%)
2	CLA	A	611	7	69,73,73	1.51	8 (11%)	82,113,113	1.79	13 (15%)
7	G3P	A	630	2	9,9,9	1.38	1 (11%)	10,12,12	1.27	1 (10%)
3	CHL	A	608	9	60,74,74	2.21	15 (25%)	58,114,114	3.11	26 (44%)
3	CHL	A	606	9	60,74,74	1.98	13 (21%)	58,114,114	2.72	28 (48%)
2	CLA	A	603	-	69,73,73	1.35	7 (10%)	82,113,113	1.74	11 (13%)
8	HTG	A	632	-	15,15,19	4.63	8 (53%)	19,20,24	2.71	3 (15%)

In the following table, the Chirals column lists the number of chiral outliers, the number of chiral centers analysed, the number of these observed in the model and the number defined in the Chemical Component Dictionary. Similar counts are reported in the Torsion and Rings columns. '-' means no outliers of that kind were identified.

Mol	Type	Chain	Res	Link	Chirals	Torsions	Rings
6	NEX	A	623	-	-	4/27/83/83	0/3/3/3

Continued on next page...

Continued from previous page...

Mol	Type	Chain	Res	Link	Chirals	Torsions	Rings
5	XAT	A	622	-	-	0/31/93/93	0/4/4/4
8	HTG	A	631	-	-	3/10/23/30	0/1/1/1
2	CLA	A	613	1	3/3/15/20	12/39/115/115	-
3	CHL	A	607	9	5/5/20/26	21/39/137/137	-
2	CLA	A	609	1	3/3/15/20	14/39/115/115	-
4	LUT	A	620	-	-	2/29/67/67	0/2/2/2
2	CLA	A	602	1	2/2/15/20	17/39/115/115	-
2	CLA	A	615	7	2/2/15/20	11/39/115/115	-
3	CHL	A	614	-	5/5/20/26	19/39/137/137	-
2	CLA	A	610	1	2/2/15/20	15/39/115/115	-
2	CLA	A	612	-	3/3/15/20	13/39/115/115	-
2	CLA	A	604	9	3/3/15/20	13/39/115/115	-
2	CLA	A	611	7	2/2/15/20	20/39/115/115	-
7	G3P	A	630	2	-	0/8/8/8	-
3	CHL	A	608	9	5/5/20/26	16/39/137/137	-
3	CHL	A	606	9	5/5/20/26	15/39/137/137	-
2	CLA	A	603	-	1/1/15/20	18/39/115/115	-
8	HTG	A	632	-	-	0/6/26/30	0/1/1/1

The worst 5 of 148 bond length outliers are listed below:

Mol	Chain	Res	Type	Atoms	Z	Observed(Å)	Ideal(Å)
8	A	632	HTG	O5-C1	14.04	1.64	1.42
6	A	623	NEX	C7-C6	10.54	1.42	1.30
8	A	631	HTG	O5-C1	8.32	1.55	1.42
3	A	608	CHL	O2A-CGA	8.08	1.56	1.33
2	A	612	CLA	O2D-CGD	6.67	1.49	1.33

The worst 5 of 263 bond angle outliers are listed below:

Mol	Chain	Res	Type	Atoms	Z	Observed(°)	Ideal(°)
3	A	608	CHL	C1B-CHB-C4A	11.18	128.52	121.32
3	A	607	CHL	C1B-CHB-C4A	11.12	128.48	121.32
3	A	614	CHL	C1B-CHB-C4A	10.94	128.36	121.32
8	A	632	HTG	C1 [?] -S1-C1	10.30	122.70	100.45
3	A	606	CHL	C1B-CHB-C4A	10.09	127.82	121.32

5 of 41 chirality outliers are listed below:

Mol	Chain	Res	Type	Atom
2	A	602	CLA	ND
2	A	602	CLA	C8
2	A	603	CLA	ND
2	A	604	CLA	ND
2	A	604	CLA	C13

5 of 213 torsion outliers are listed below:

Mol	Chain	Res	Type	Atoms
2	A	602	CLA	C3A-C2A-CAA-CBA
2	A	603	CLA	CHA-CBD-CGD-O1D
2	A	603	CLA	CBD-CGD-O2D-CED
2	A	604	CLA	CHA-CBD-CGD-O1D
2	A	604	CLA	CHA-CBD-CGD-O2D

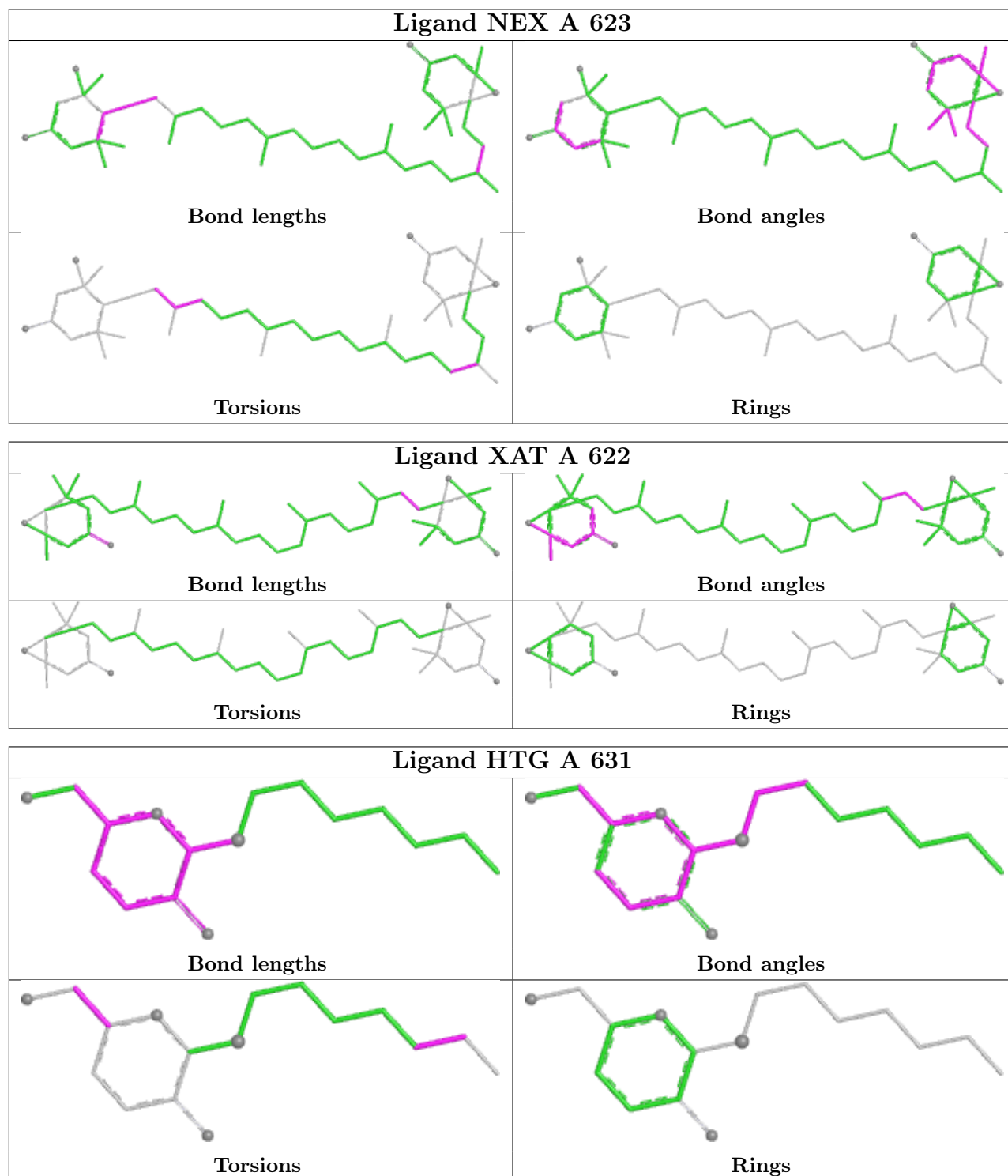
There are no ring outliers.

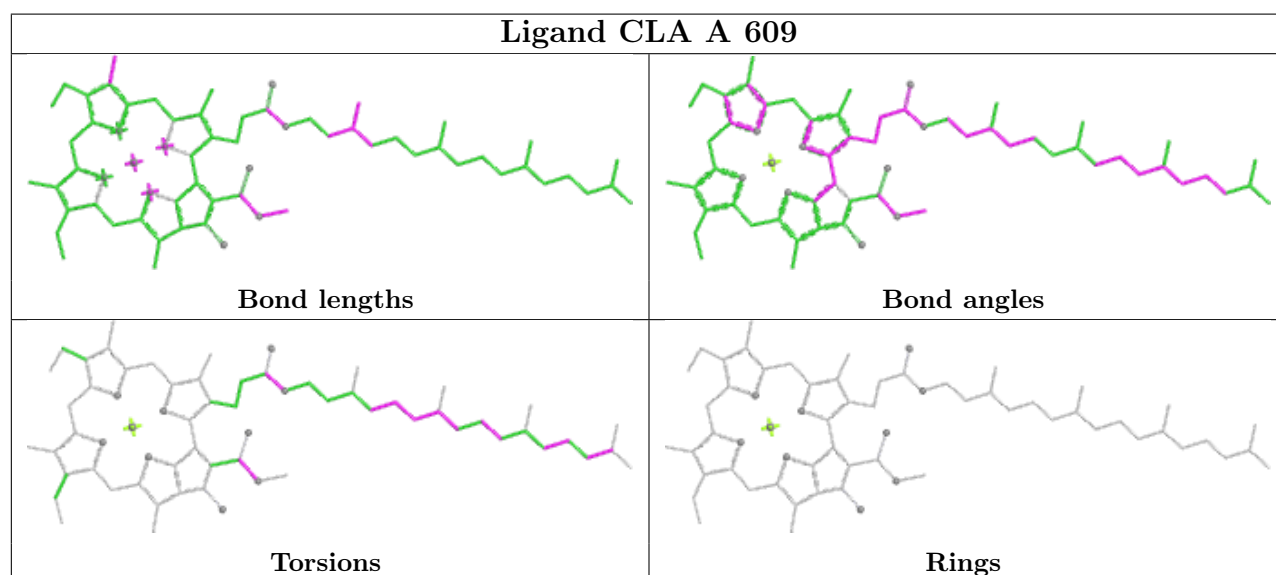
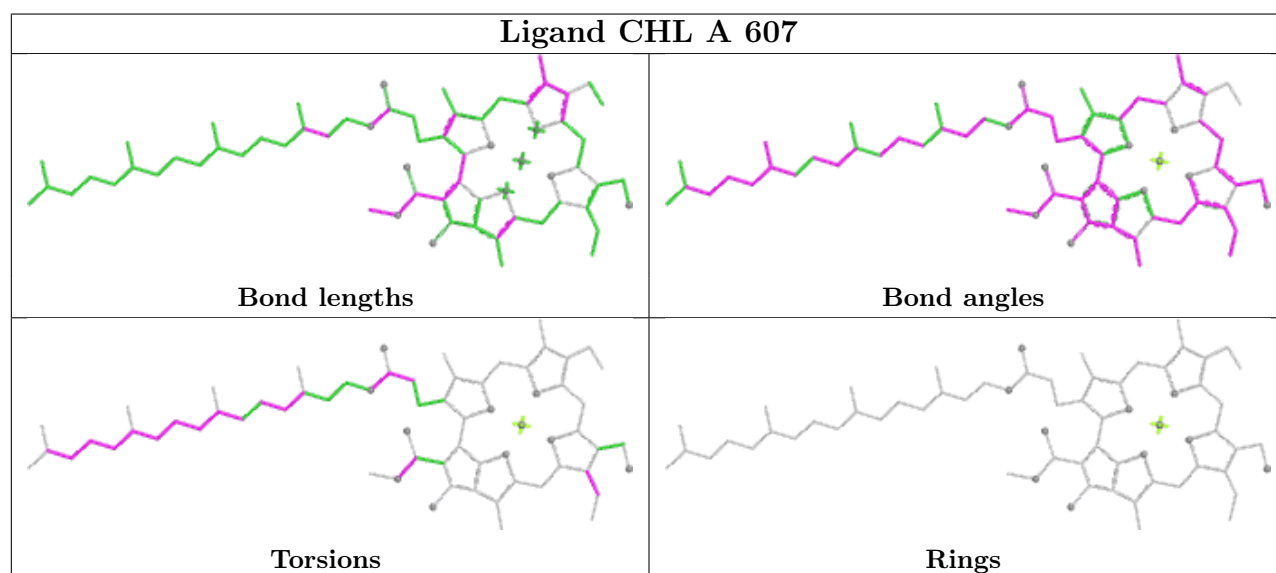
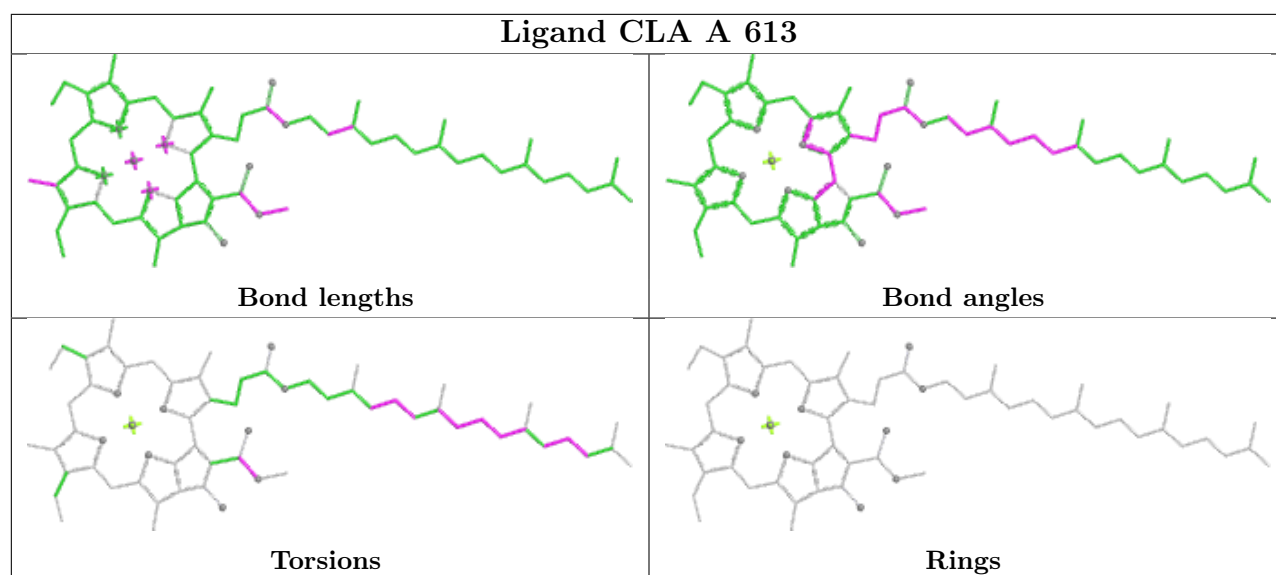
15 monomers are involved in 42 short contacts:

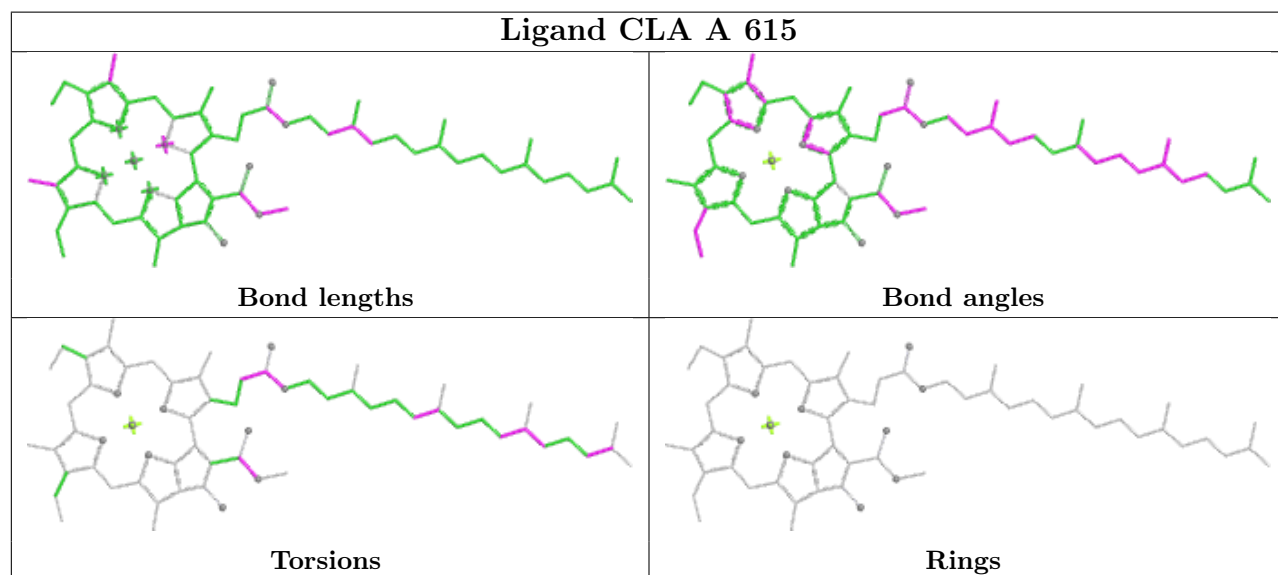
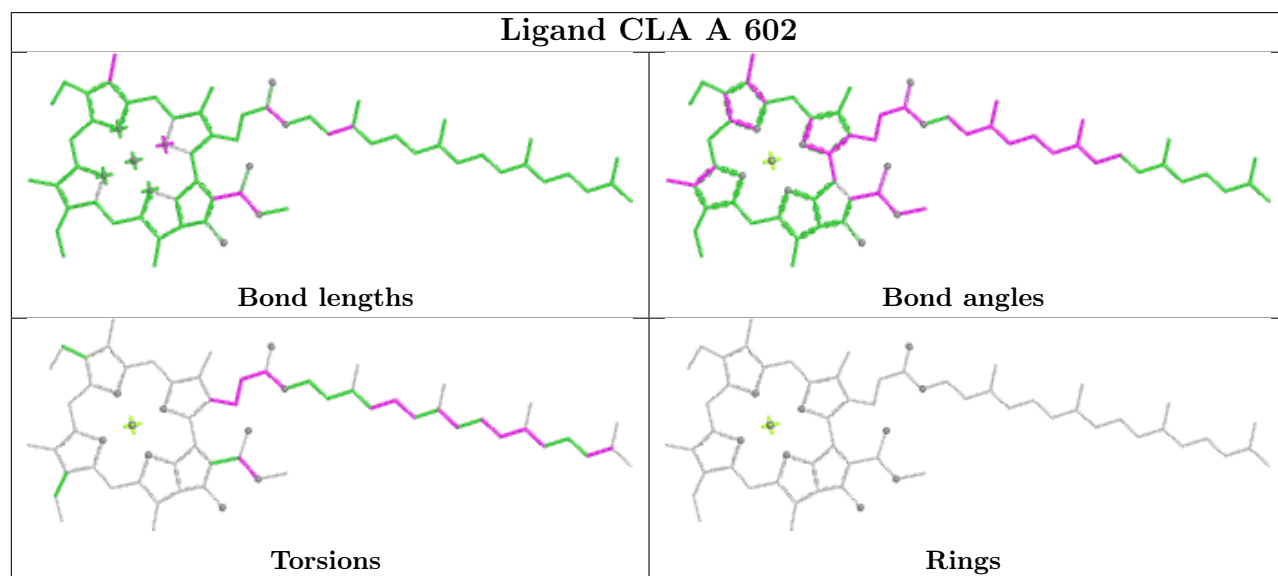
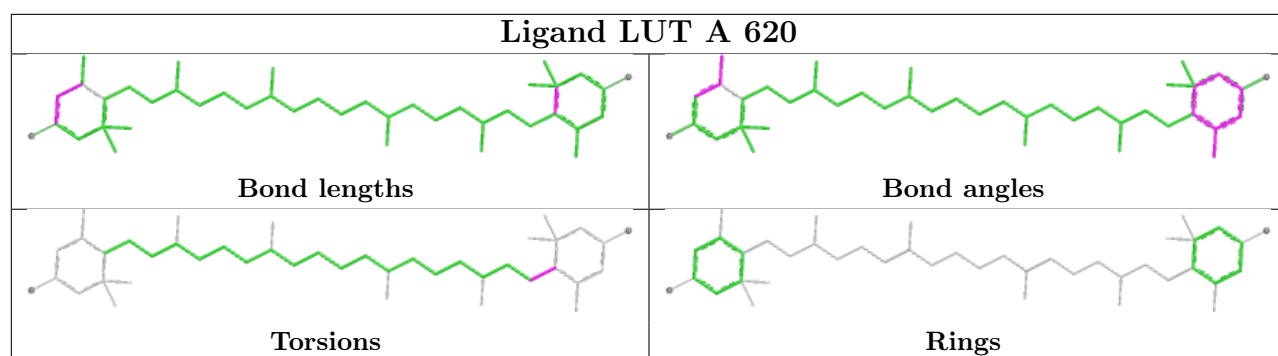
Mol	Chain	Res	Type	Clashes	Symm-Clashes
6	A	623	NEX	3	0
5	A	622	XAT	1	0
2	A	613	CLA	6	0
3	A	607	CHL	1	0
2	A	609	CLA	3	0
4	A	620	LUT	4	0
2	A	602	CLA	1	0
2	A	615	CLA	6	0
3	A	614	CHL	2	0
2	A	610	CLA	2	0
2	A	604	CLA	4	0
3	A	608	CHL	1	0
3	A	606	CHL	5	0
2	A	603	CLA	2	0
8	A	632	HTG	5	0

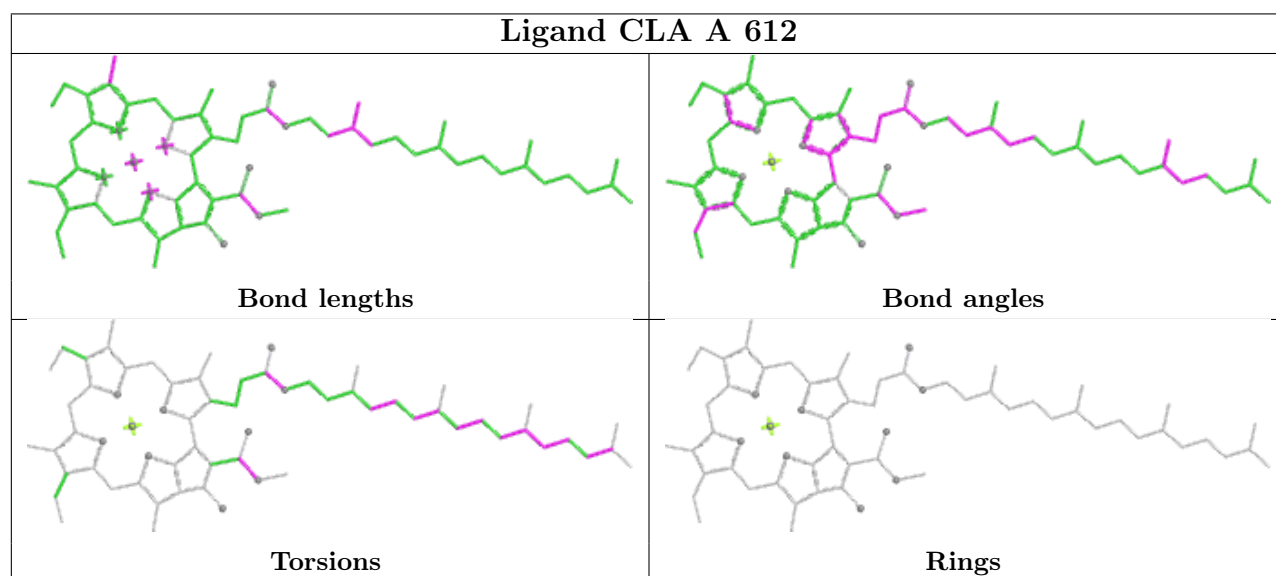
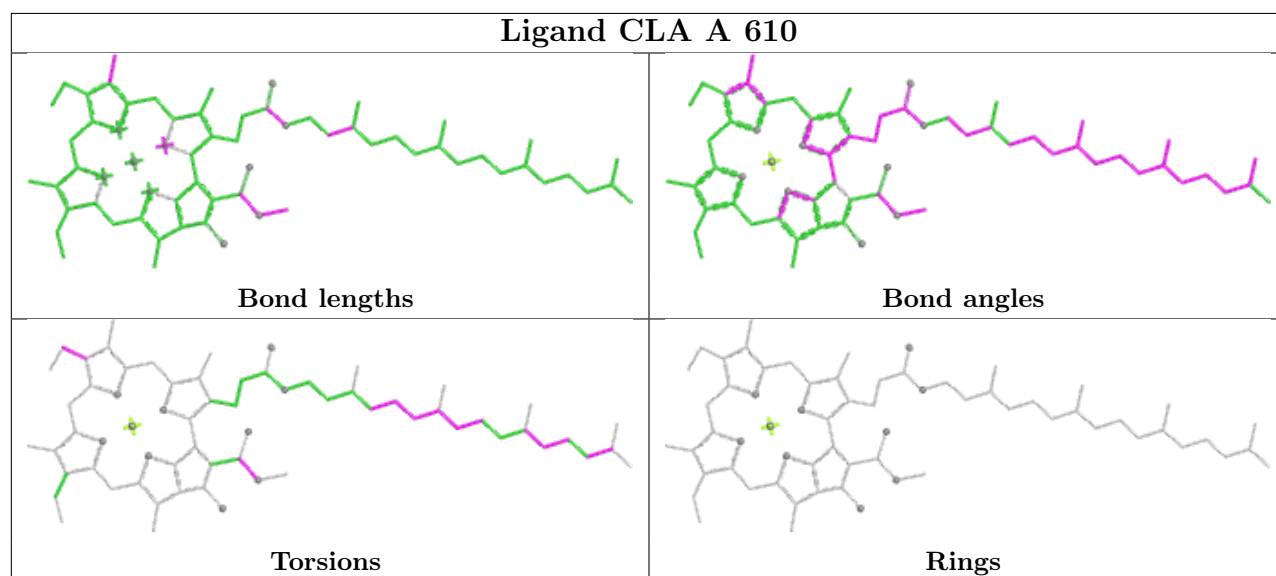
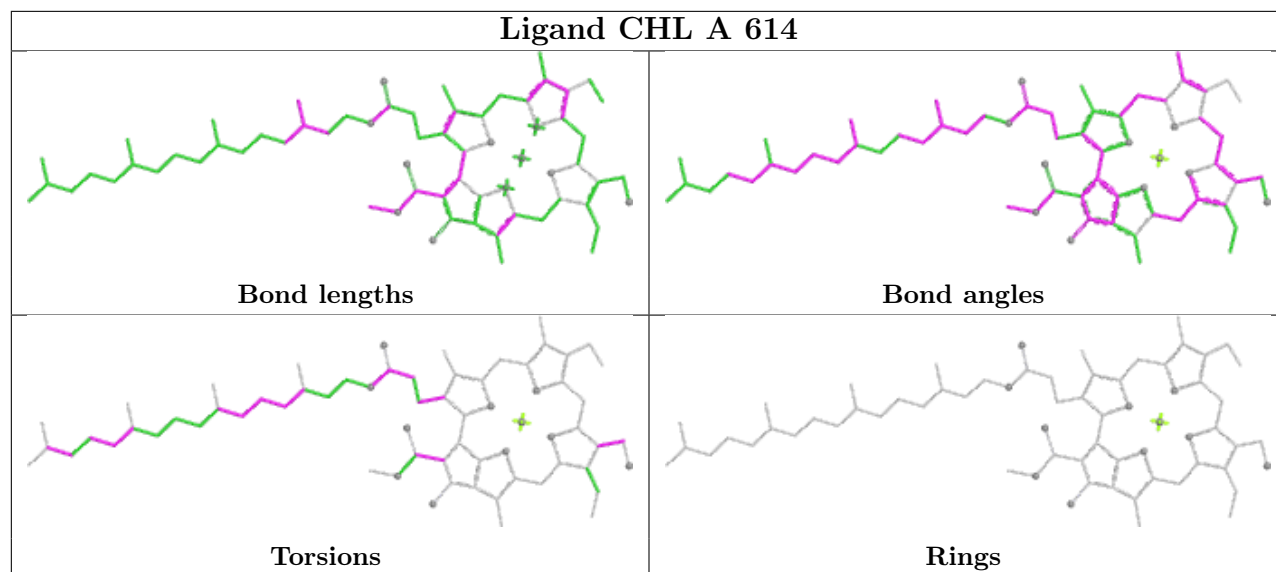
The following is a two-dimensional graphical depiction of Mogul quality analysis of bond lengths, bond angles, torsion angles, and ring geometry for all instances of the Ligand of Interest. In addition, ligands with molecular weight > 250 and outliers as shown on the validation Tables will also be included. For torsion angles, if less than 5% of the Mogul distribution of torsion angles is within 10 degrees of the torsion angle in question, then that torsion angle is considered an outlier. Any bond that is central to one or more torsion angles identified as an outlier by Mogul will be highlighted in the graph. For rings, the root-mean-square deviation (RMSD) between the ring in question and similar rings identified by Mogul is calculated over all ring torsion angles. If the

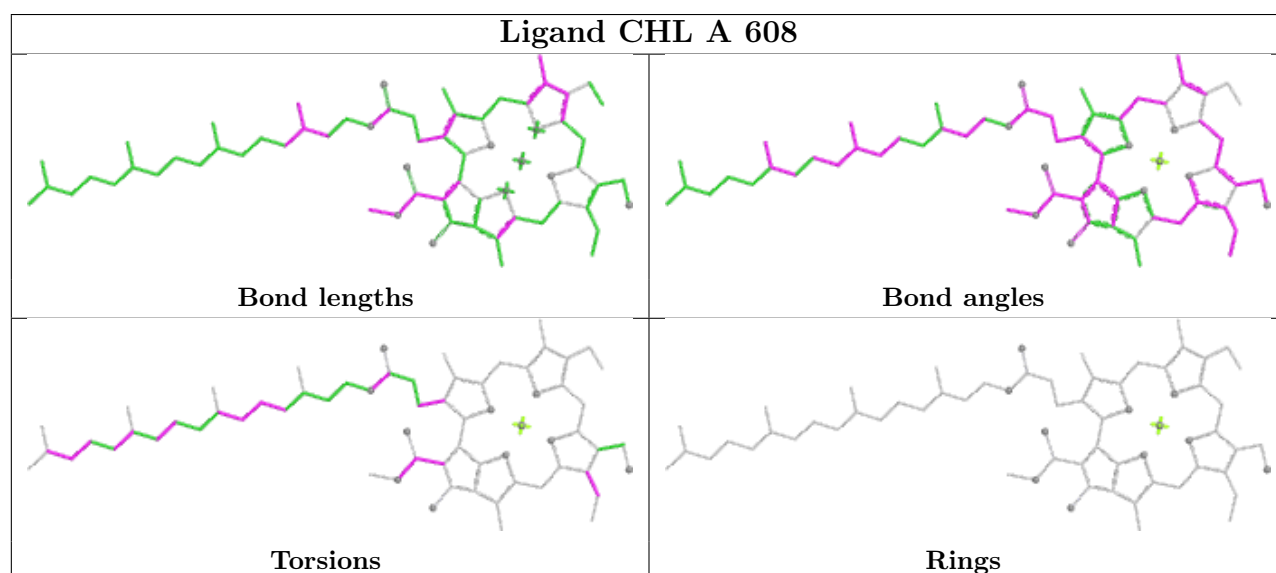
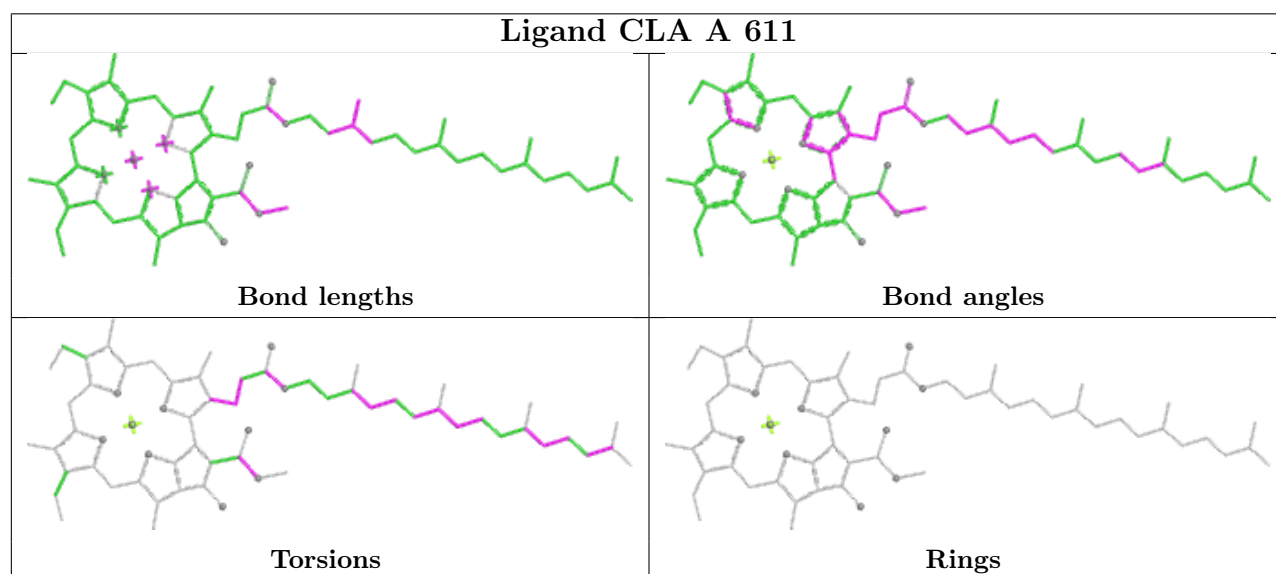
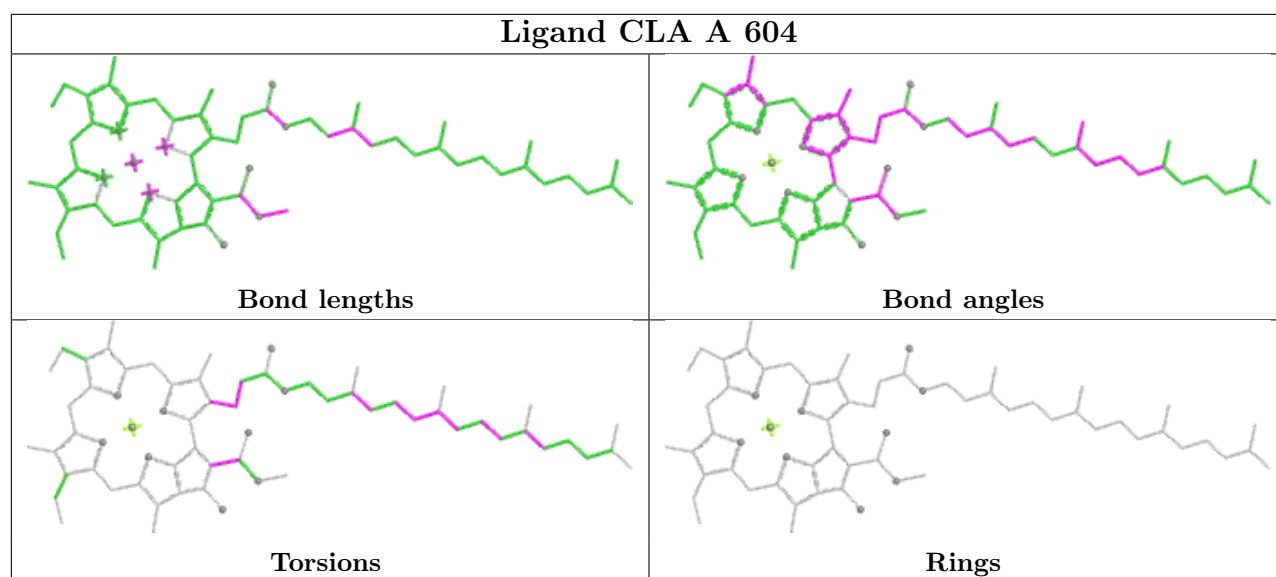
average RMSD is greater than 60 degrees and the minimal RMSD between the ring in question and any Mogul-identified rings is also greater than 60 degrees, then that ring is considered an outlier. The outliers are highlighted in purple. The color gray indicates Mogul did not find sufficient equivalents in the CSD to analyse the geometry.

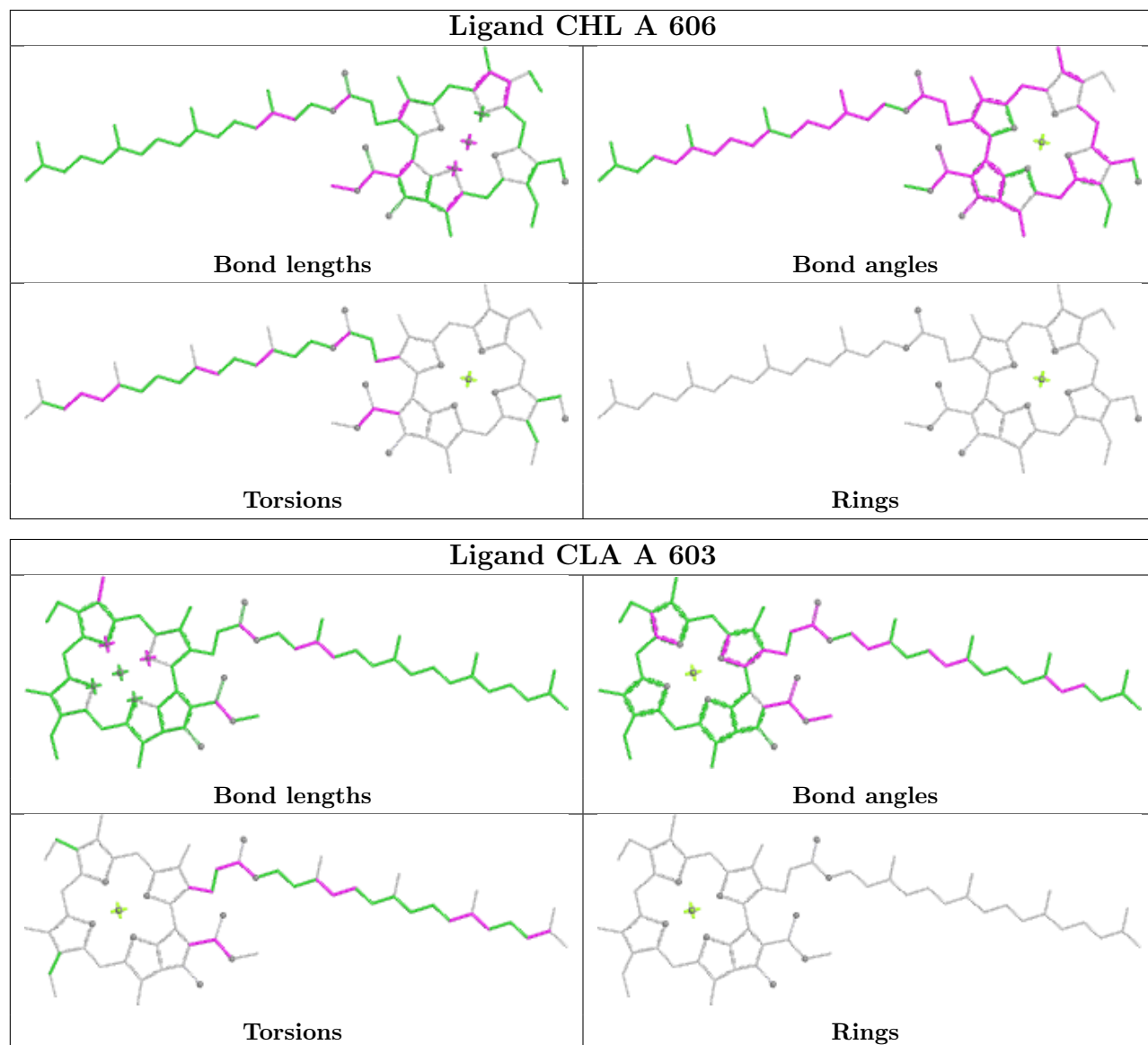


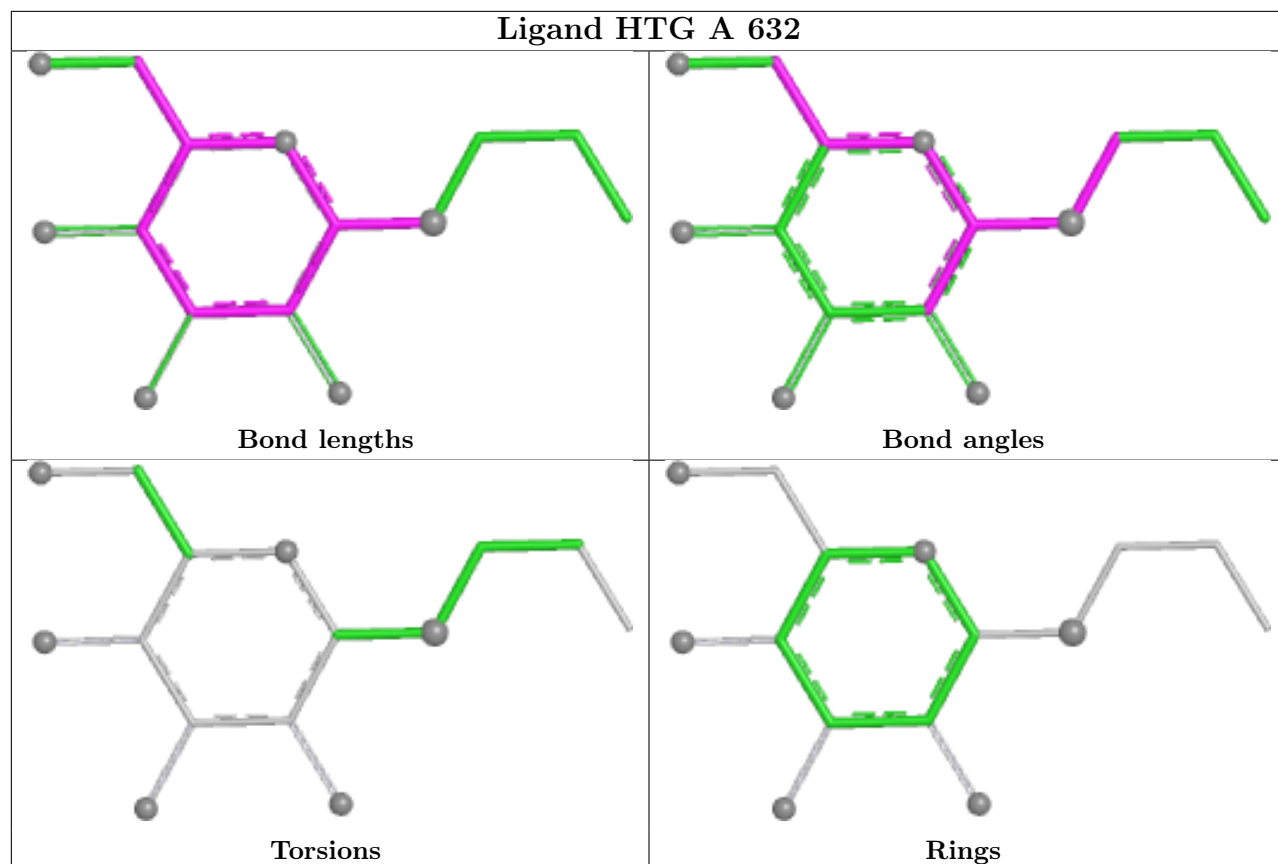












5.7 Other polymers [i](#)

There are no such residues in this entry.

5.8 Polymer linkage issues [i](#)

There are no chain breaks in this entry.

6 Fit of model and data [i](#)

6.1 Protein, DNA and RNA chains [i](#)

In the following table, the column labelled '#RSRZ > 2' contains the number (and percentage) of RSRZ outliers, followed by percent RSRZ outliers for the chain as percentile scores relative to all X-ray entries and entries of similar resolution. The OWAB column contains the minimum, median, 95th percentile and maximum values of the occupancy-weighted average B-factor per residue. The column labelled 'Q < 0.9' lists the number of (and percentage) of residues with an average occupancy less than 0.9.

Mol	Chain	Analysed	<RSRZ>	#RSRZ>2	OWAB(Å ²)	Q<0.9
1	A	156/243 (64%)	0.85	28 (17%) 3 3	18, 41, 96, 128	0

The worst 5 of 28 RSRZ outliers are listed below:

Mol	Chain	Res	Type	RSRZ
1	A	234	LEU	5.0
1	A	88	GLY	4.5
1	A	166	LEU	4.4
1	A	243	LEU	3.9
1	A	90	GLN	3.7

6.2 Non-standard residues in protein, DNA, RNA chains [i](#)

There are no non-standard protein/DNA/RNA residues in this entry.

6.3 Carbohydrates [i](#)

There are no oligosaccharides in this entry.

6.4 Ligands [i](#)

In the following table, the Atoms column lists the number of modelled atoms in the group and the number defined in the chemical component dictionary. The B-factors column lists the minimum, median, 95th percentile and maximum values of B factors of atoms in the group. The column labelled 'Q < 0.9' lists the number of atoms with occupancy less than 0.9.

Mol	Type	Chain	Res	Atoms	RSCC	RSR	B-factors(Å ²)	Q<0.9
8	HTG	A	632	15/19	0.75	0.20	85,87,89,89	0
8	HTG	A	631	17/19	0.82	0.24	85,86,88,89	0

Continued on next page...

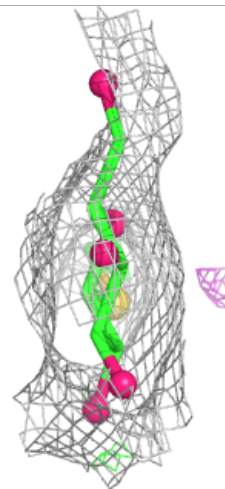
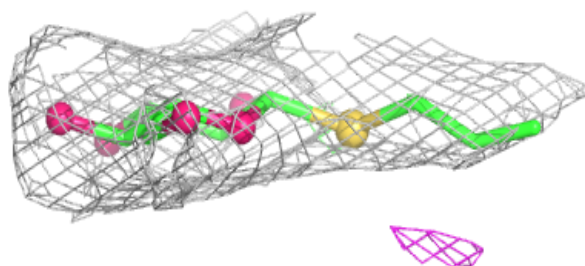
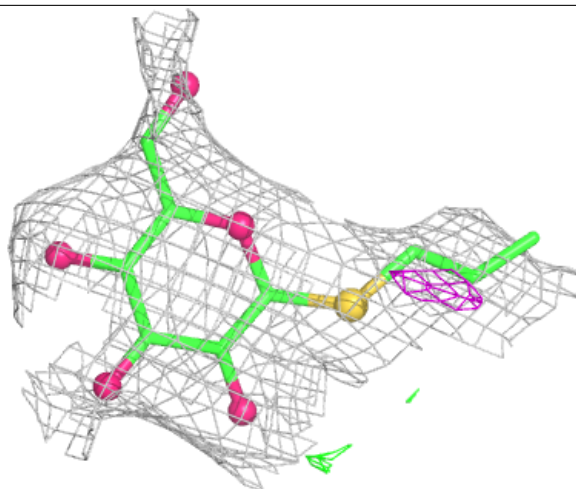
Continued from previous page...

Mol	Type	Chain	Res	Atoms	RSCC	RSR	B-factors(Å ²)	Q<0.9
3	CHL	A	608	66/66	0.83	0.22	32,63,90,94	0
3	CHL	A	614	66/66	0.83	0.23	36,52,133,134	0
2	CLA	A	602	65/65	0.86	0.23	37,74,125,129	0
3	CHL	A	607	66/66	0.86	0.22	39,53,154,156	0
2	CLA	A	612	65/65	0.87	0.28	24,54,143,144	0
6	NEX	A	623	44/44	0.87	0.17	22,49,158,159	0
2	CLA	A	603	65/65	0.88	0.22	40,61,157,158	0
2	CLA	A	609	65/65	0.89	0.20	38,56,119,125	0
2	CLA	A	615	65/65	0.89	0.19	15,35,141,144	0
7	G3P	A	630	10/10	0.90	0.17	69,78,82,82	0
3	CHL	A	606	66/66	0.91	0.19	18,38,127,129	0
2	CLA	A	610	65/65	0.92	0.14	29,44,54,67	0
5	XAT	A	622	44/44	0.92	0.18	21,53,122,127	0
2	CLA	A	604	65/65	0.92	0.14	23,44,99,100	0
4	LUT	A	620	42/42	0.94	0.10	21,31,37,39	0
2	CLA	A	613	65/65	0.94	0.16	41,49,109,125	0
2	CLA	A	611	65/65	0.94	0.16	13,28,162,165	0

The following is a graphical depiction of the model fit to experimental electron density of all instances of the Ligand of Interest. In addition, ligands with molecular weight > 250 and outliers as shown on the geometry validation Tables will also be included. Each fit is shown from different orientation to approximate a three-dimensional view.

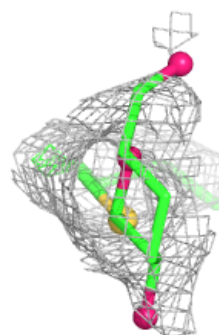
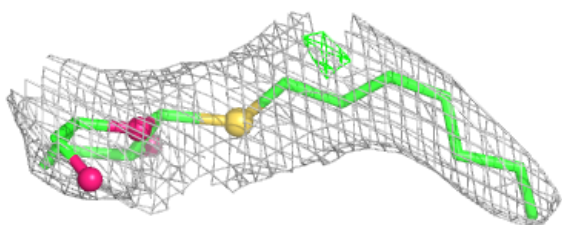
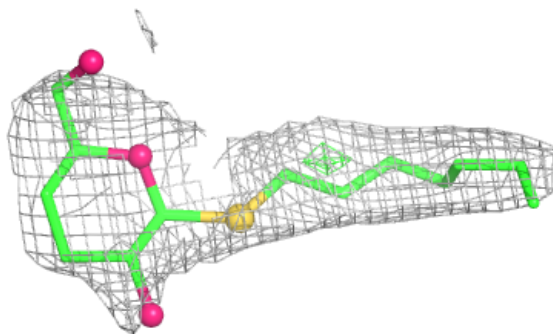
Electron density around HTG A 632:

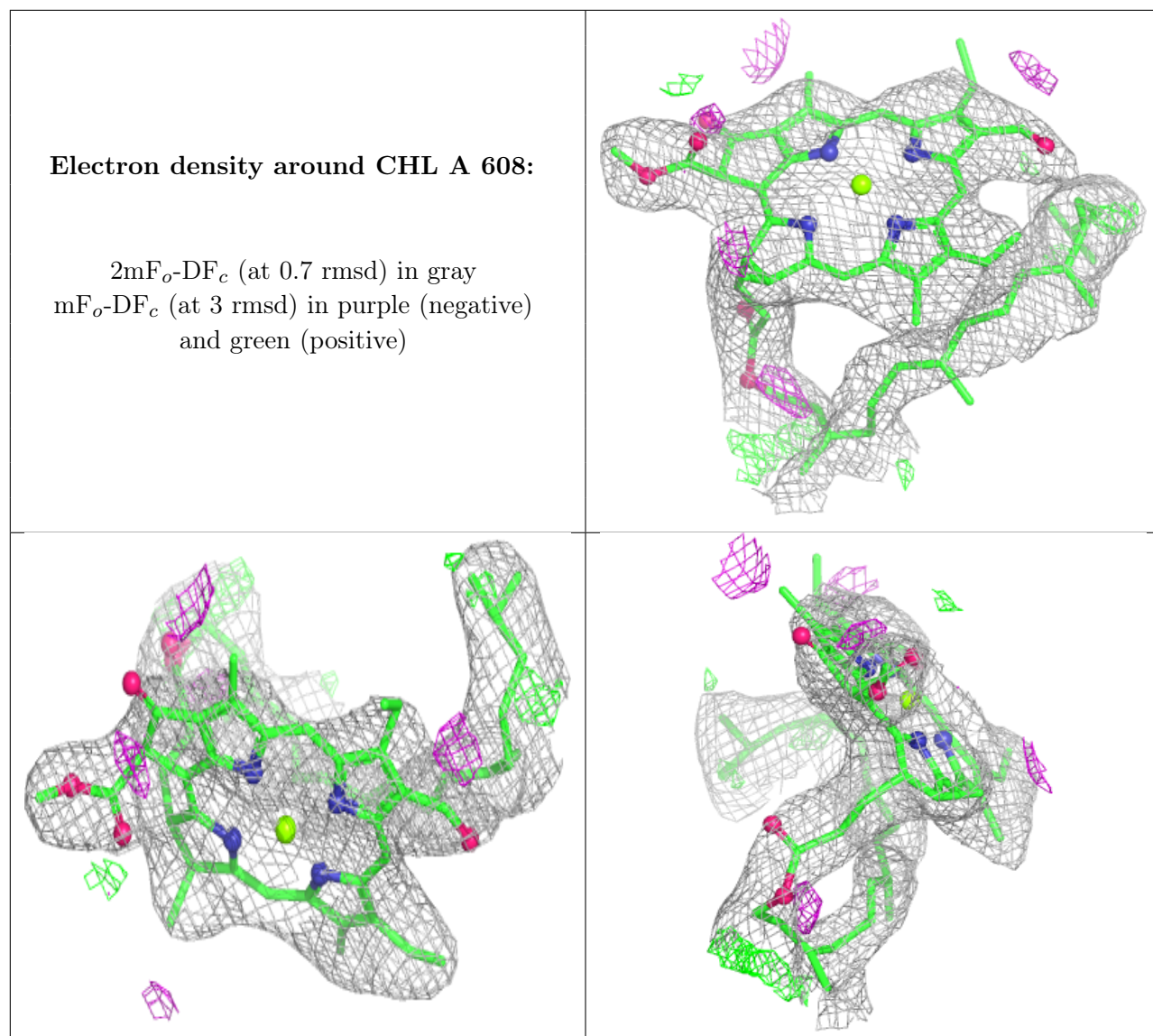
$2mF_o-DF_c$ (at 0.7 rmsd) in gray
 mF_o-DF_c (at 3 rmsd) in purple (negative)
and green (positive)

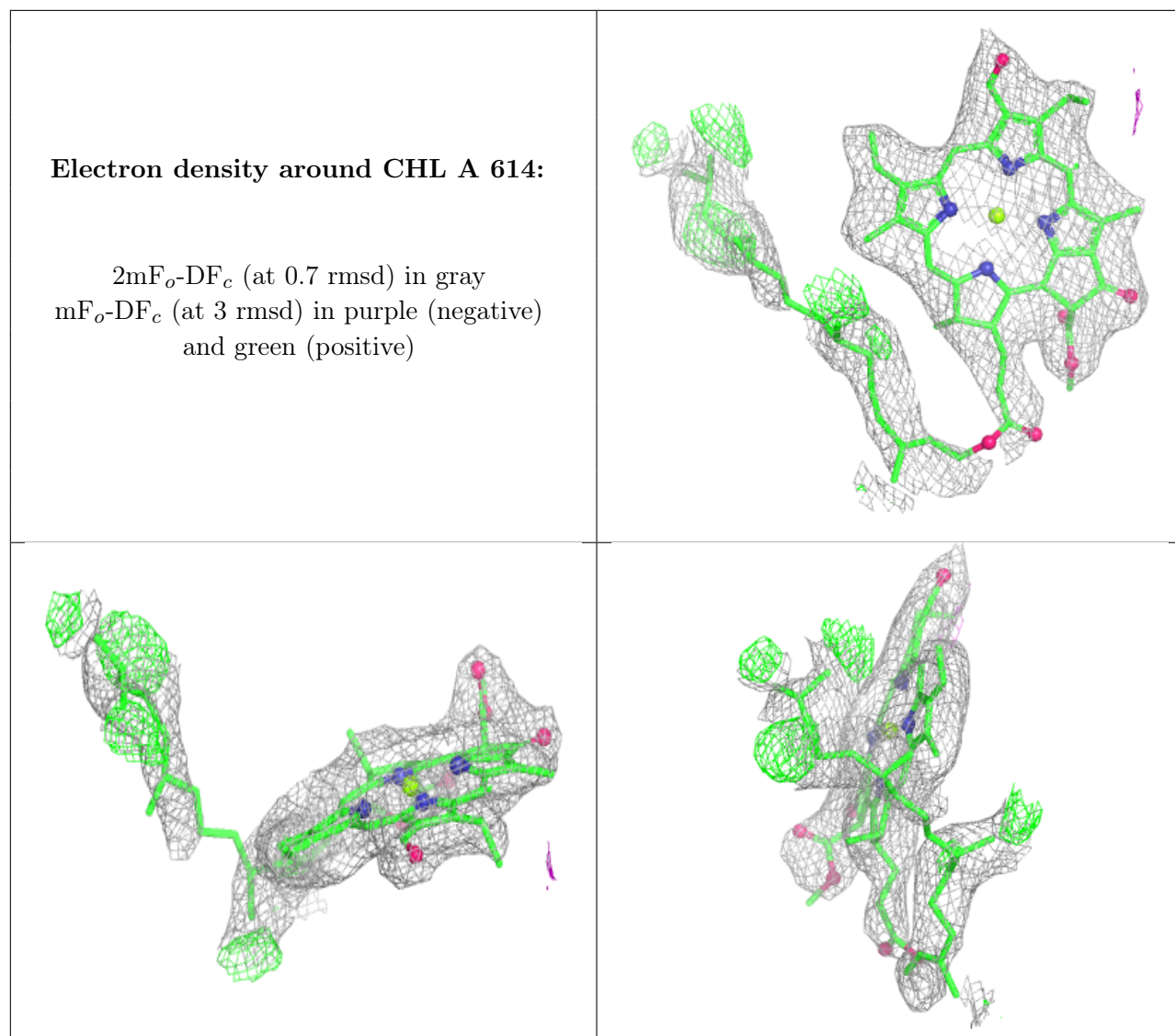


Electron density around HTG A 631:

$2mF_o-DF_c$ (at 0.7 rmsd) in gray
 mF_o-DF_c (at 3 rmsd) in purple (negative)
and green (positive)

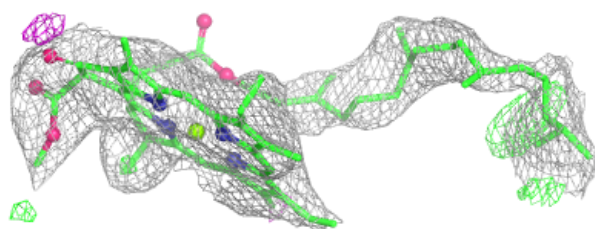
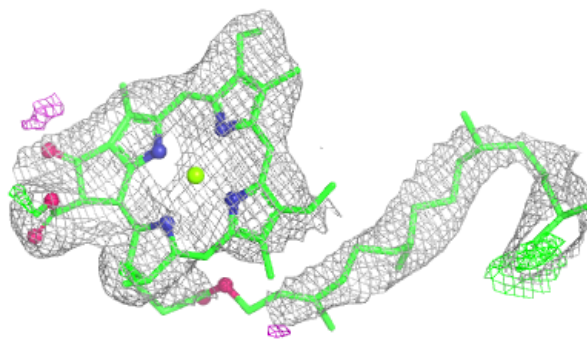




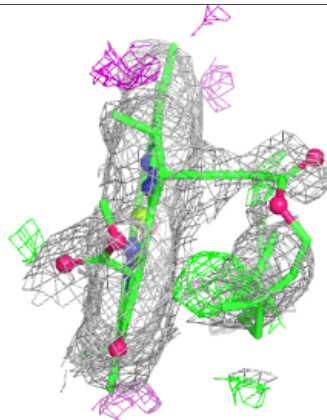
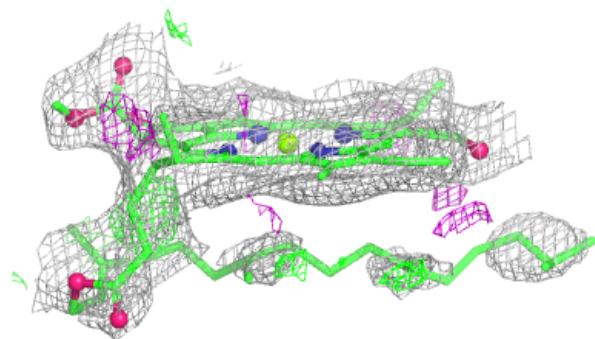
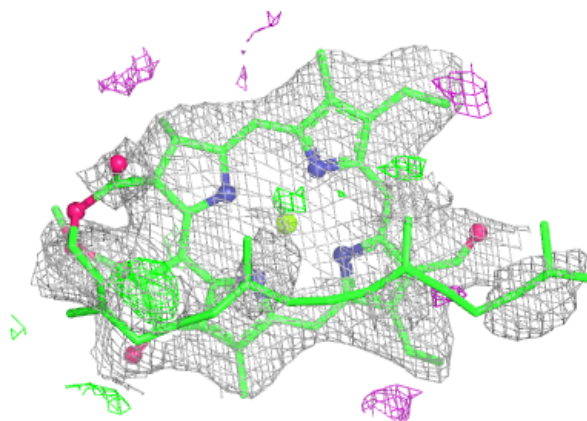


Electron density around CLA A 602:

$2mF_o-DF_c$ (at 0.7 rmsd) in gray
 mF_o-DF_c (at 3 rmsd) in purple (negative)
and green (positive)

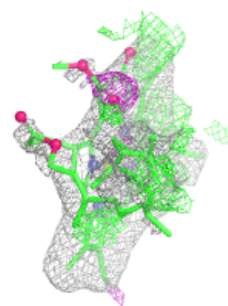
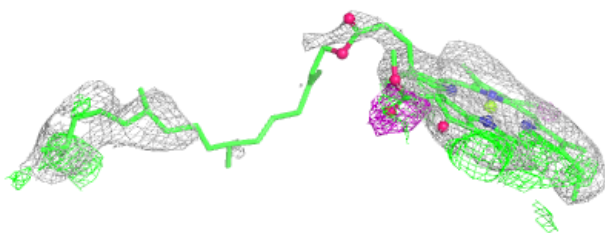
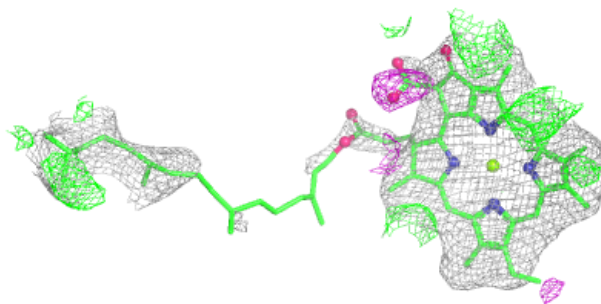
**Electron density around CHL A 607:**

$2mF_o-DF_c$ (at 0.7 rmsd) in gray
 mF_o-DF_c (at 3 rmsd) in purple (negative)
and green (positive)

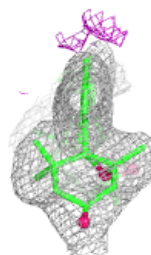
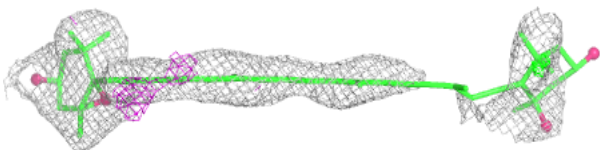
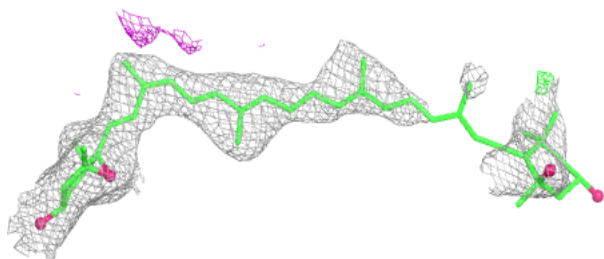


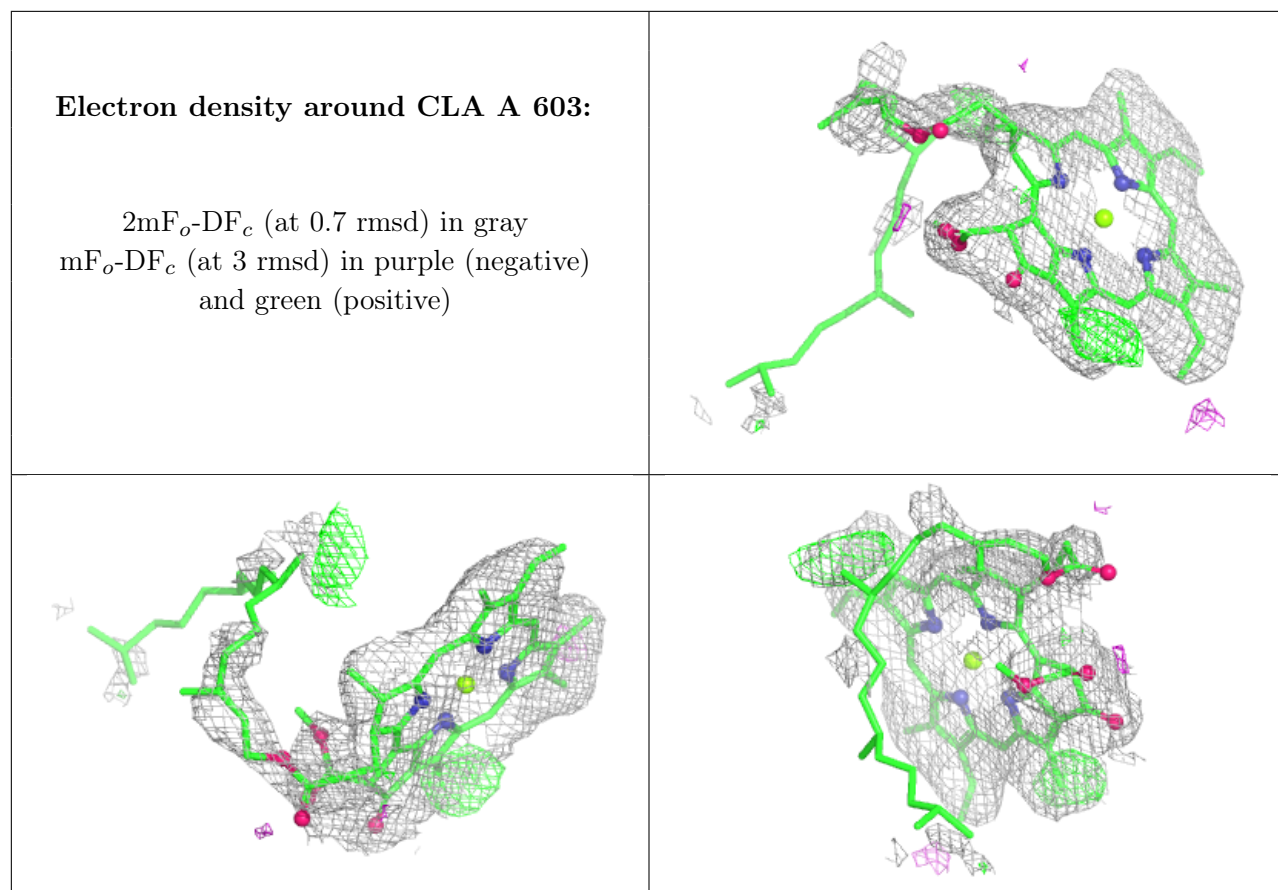
Electron density around CLA A 612:

$2mF_o-DF_c$ (at 0.7 rmsd) in gray
 mF_o-DF_c (at 3 rmsd) in purple (negative)
and green (positive)

**Electron density around NEX A 623:**

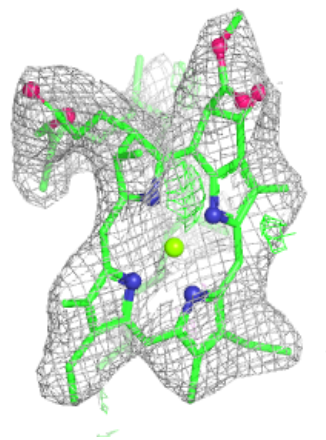
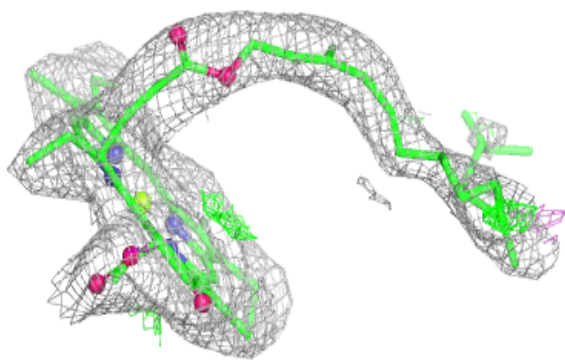
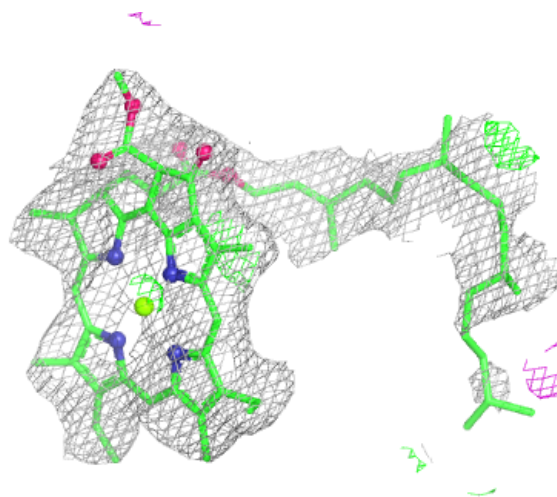
$2mF_o-DF_c$ (at 0.7 rmsd) in gray
 mF_o-DF_c (at 3 rmsd) in purple (negative)
and green (positive)

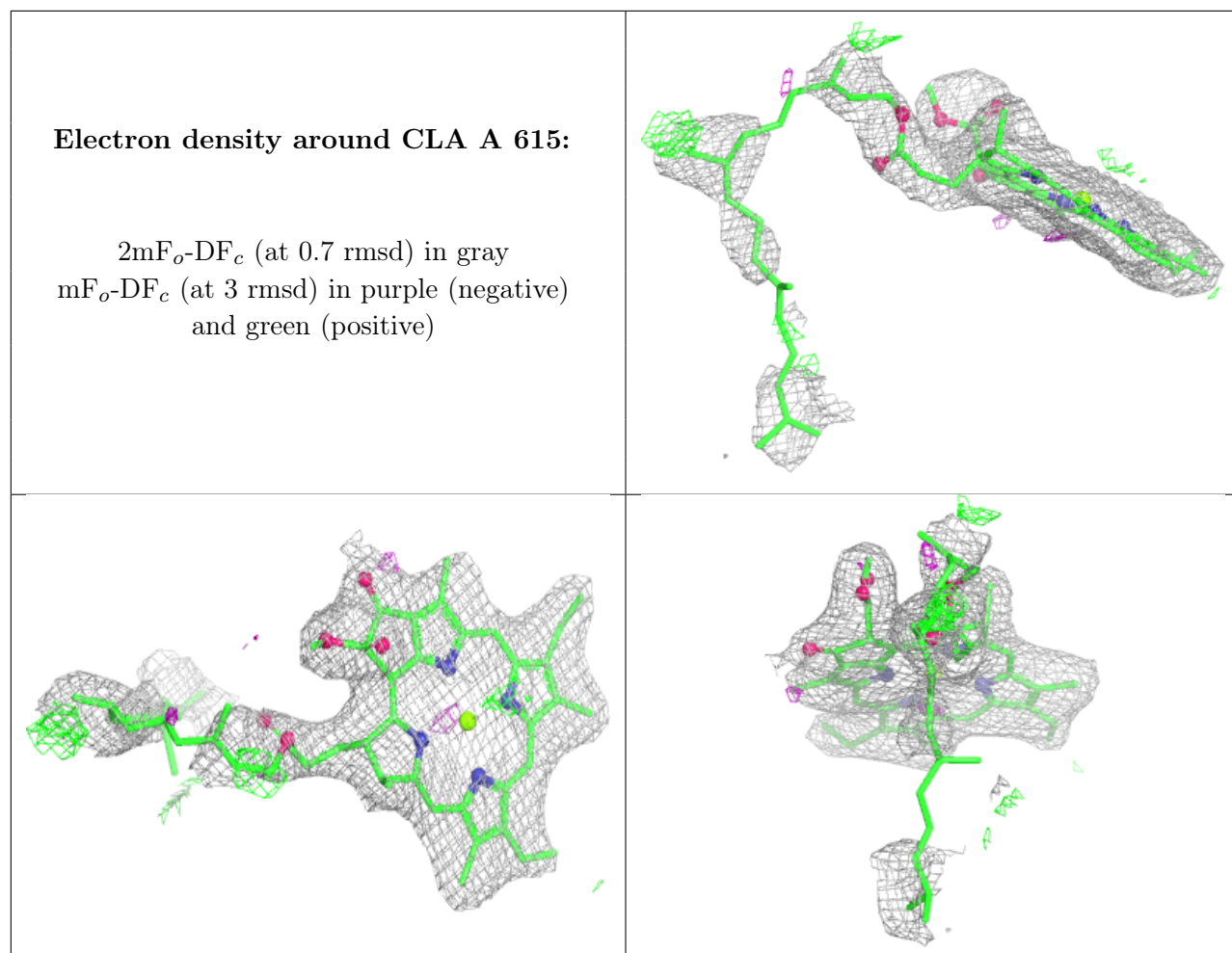


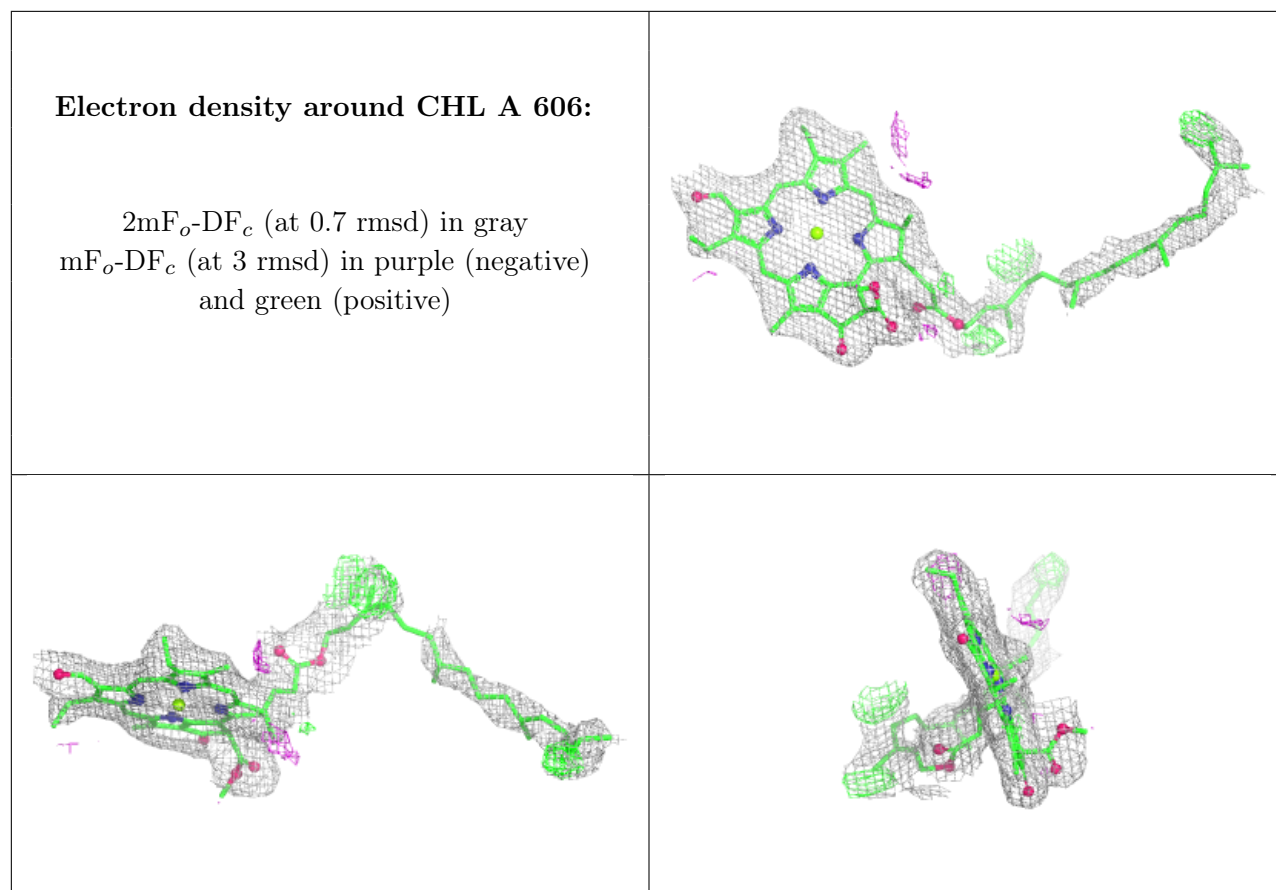


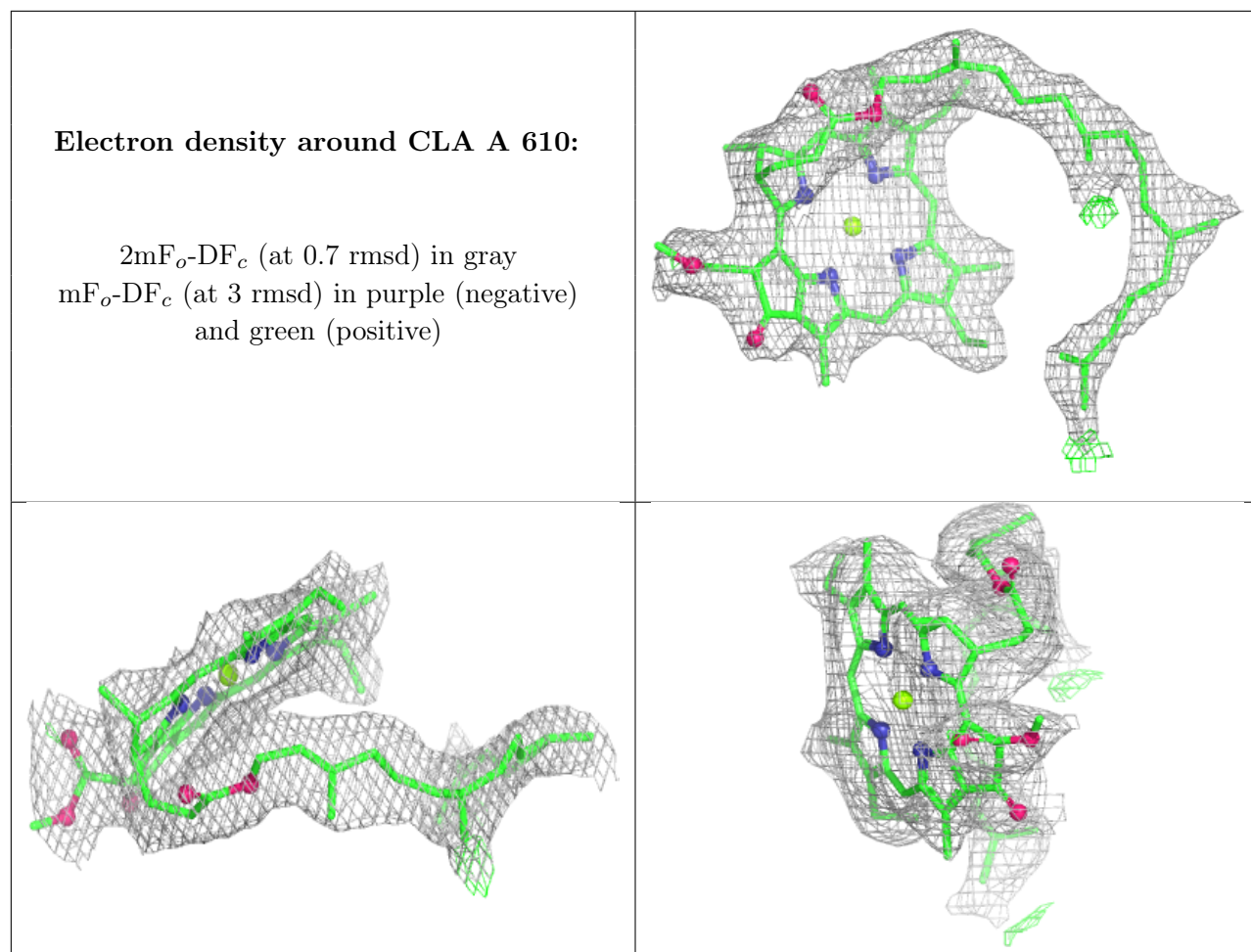
Electron density around CLA A 609:

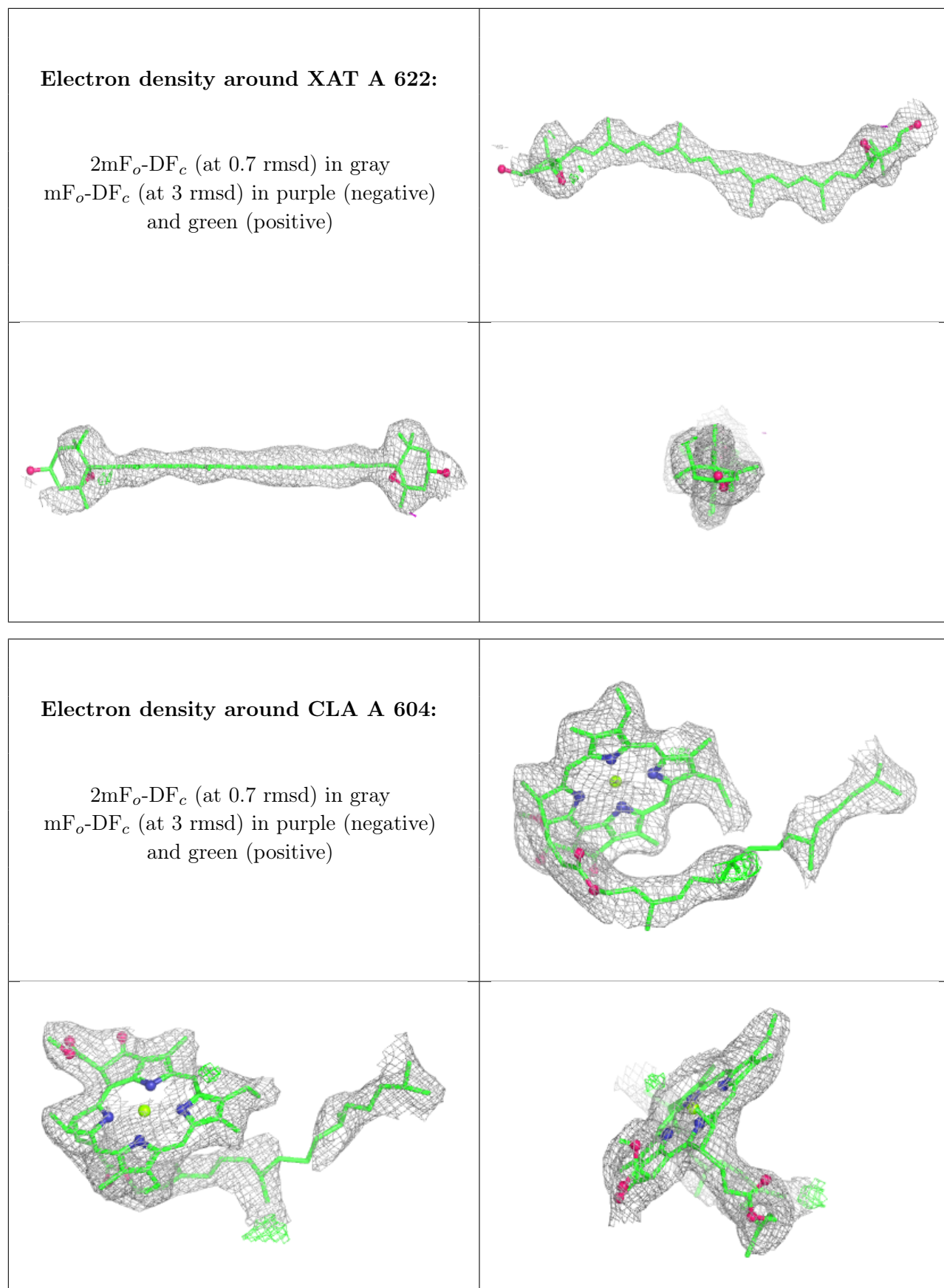
$2mF_o-DF_c$ (at 0.7 rmsd) in gray
 mF_o-DF_c (at 3 rmsd) in purple (negative)
and green (positive)





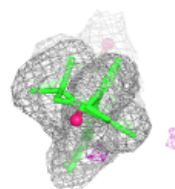
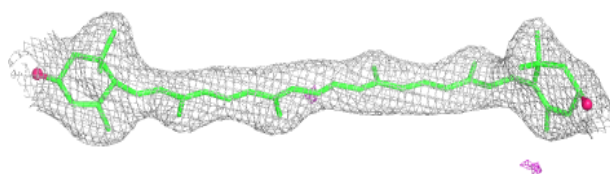
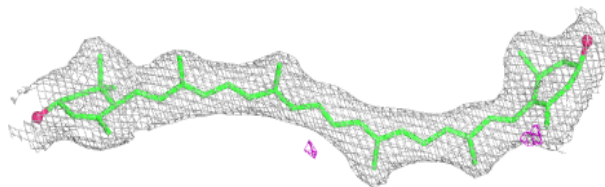




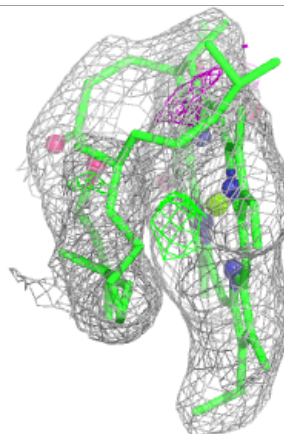
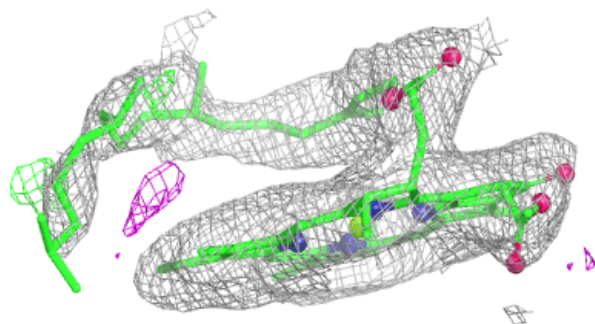
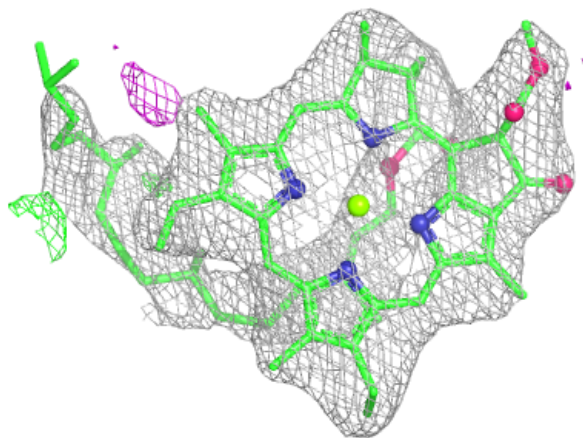


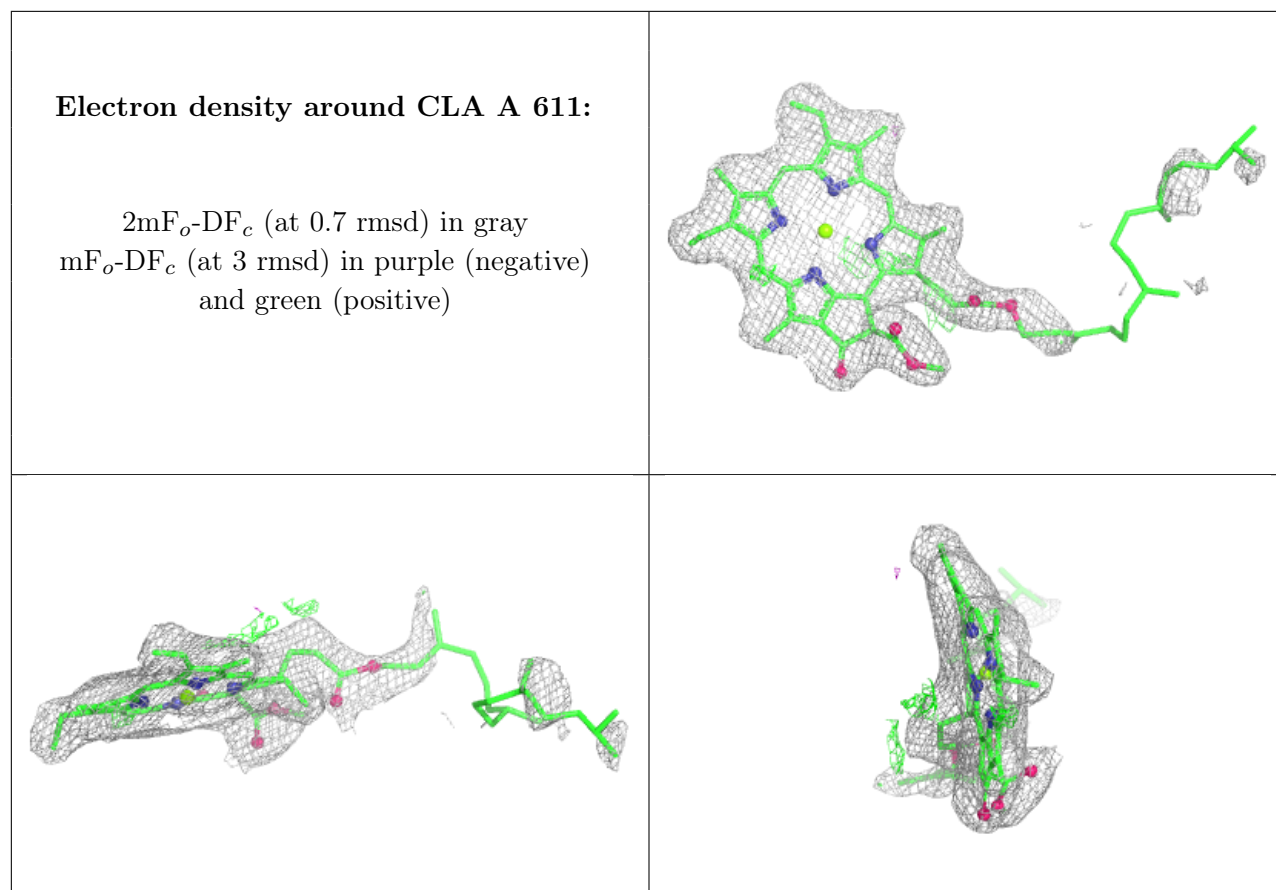
Electron density around LUT A 620:

$2mF_o-DF_c$ (at 0.7 rmsd) in gray
 mF_o-DF_c (at 3 rmsd) in purple (negative)
and green (positive)

**Electron density around CLA A 613:**

$2mF_o-DF_c$ (at 0.7 rmsd) in gray
 mF_o-DF_c (at 3 rmsd) in purple (negative)
and green (positive)





6.5 Other polymers [i](#)

There are no such residues in this entry.