



wwPDB X-ray Structure Validation Summary Report ⓘ

Mar 9, 2026 – 04:56 AM UTC

PDB ID : 4RDZ / pdb_00004rdz
Title : Crystal structure of VmoLac in P64 space group
Authors : Hiblot, J.; Bzdrenga, J.; Champion, C.; Gotthard, G.; Gonzalez, D.; Chabriere, E.; Elias, M.
Deposited on : 2014-09-20
Resolution : 1.80 Å(reported)

This is a wwPDB X-ray Structure Validation Summary Report for a publicly released PDB entry.

We welcome your comments at validation@mail.wwpdb.org

A user guide is available at

<https://www.wwpdb.org/validation/2017/XrayValidationReportHelp>

with specific help available everywhere you see the ⓘ symbol.

The types of validation reports are described at

<http://www.wwpdb.org/validation/2017/FAQs#types>.

The following versions of software and data (see [references ⓘ](#)) were used in the production of this report:

MolProbity : 4-5-2 with Phenix2.0
Mogul : 2022.3.0, CSD as543be (2022)
Xtriage (Phenix) : 2.0
EDS : 3.0
Percentile statistics : 20250101.v01 (using entries in the PDB archive January 1st 2025)
CCP4 : 9.0.010 (Gargrove)
Density-Fitness : 1.0.12
Ideal geometry (proteins) : Engh & Huber (2001)
Ideal geometry (DNA, RNA) : Parkinson et al. (1996)
Validation Pipeline (wwPDB-VP) : 2.49

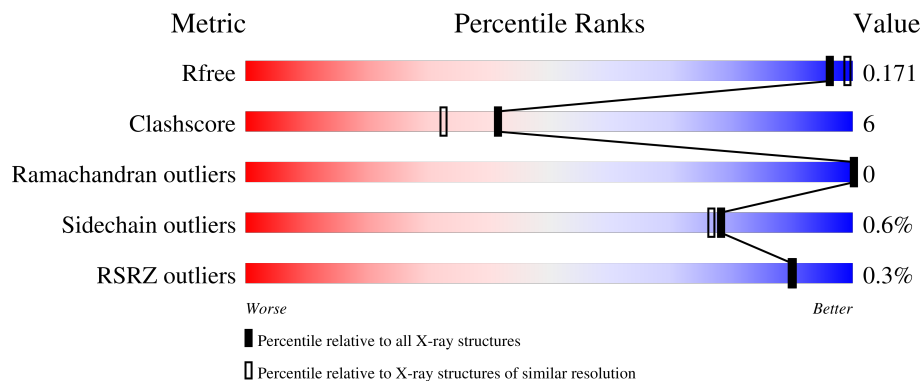
1 Overall quality at a glance

The following experimental techniques were used to determine the structure:

X-RAY DIFFRACTION



The reported resolution of this entry is 1.80 Å.

Percentile scores (ranging between 0-100) for global validation metrics of the entry are shown in the following graphic. The table shows the number of entries on which the scores are based.



Metric	Whole archive (#Entries)	Similar resolution (#Entries, resolution range(Å))
R_{free}	180053	7662 (1.80-1.80)
Clashscore	190562	8479 (1.80-1.80)
Ramachandran outliers	187476	8391 (1.80-1.80)
Sidechain outliers	187428	8390 (1.80-1.80)
RSRZ outliers	180081	7663 (1.80-1.80)

The table below summarises the geometric issues observed across the polymeric chains and their fit to the electron density. The red, orange, yellow and green segments of the lower bar indicate the fraction of residues that contain outliers for ≥ 3 , 2, 1 and 0 types of geometric quality criteria respectively. A grey segment represents the fraction of residues that are not modelled. The numeric value for each fraction is indicated below the corresponding segment, with a dot representing fractions $\leq 5\%$. The upper red bar (where present) indicates the fraction of residues that have poor fit to the electron density. The numeric value is given above the bar.

Mol	Chain	Length	Quality of chain
1	A	316	 84% 16%
1	B	316	 86% 13%

2 Entry composition

There are 5 unique types of molecules in this entry. The entry contains 6244 atoms, of which 0 are hydrogens and 0 are deuteriums.

In the tables below, the ZeroOcc column contains the number of atoms modelled with zero occupancy, the AltConf column contains the number of residues with at least one atom in alternate conformation and the Trace column contains the number of residues modelled with at most 2 atoms.

- Molecule 1 is a protein called Parathion hydrolase.

Mol	Chain	Residues	Atoms					ZeroOcc	AltConf	Trace
			Total	C	N	O	S			
1	A	315	2591	1665	451	467	8	0	16	0
1	B	316	2612	1685	448	470	9	0	19	0

There are 2 discrepancies between the modelled and reference sequences:

Chain	Residue	Modelled	Actual	Comment	Reference
A	0	GLY	-	expression tag	UNP F0QXN6
B	0	GLY	-	expression tag	UNP F0QXN6

- Molecule 2 is COBALT (II) ION (CCD ID: CO) (formula: Co).

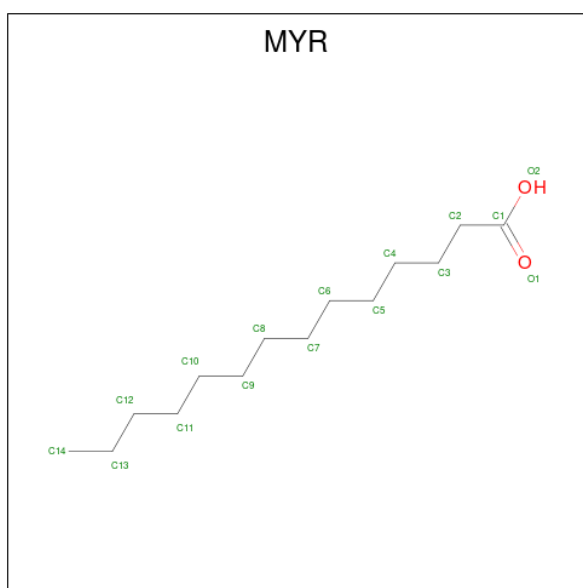
Mol	Chain	Residues	Atoms		ZeroOcc	AltConf
2	A	2	Total	Co	0	0
			2	2		
2	B	2	Total	Co	0	0
			2	2		

- Molecule 3 is GLYCEROL (CCD ID: GOL) (formula: C₃H₈O₃).



Mol	Chain	Residues	Atoms			ZeroOcc	AltConf
3	A	1	Total	C	O	0	0
			6	3	3		
3	B	1	Total	C	O	0	0
			6	3	3		

- Molecule 4 is MYRISTIC ACID (CCD ID: MYR) (formula: $C_{14}H_{28}O_2$).



Mol	Chain	Residues	Atoms			ZeroOcc	AltConf
4	A	1	Total	C	O	0	0
			16	14	2		
4	B	1	Total	C	O	0	0
			16	14	2		


- Molecule 5 is water.

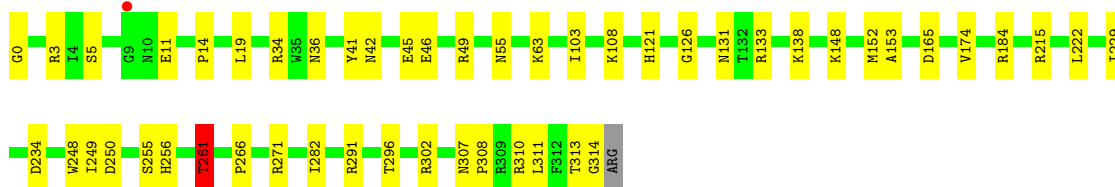
Mol	Chain	Residues	Atoms		ZeroOcc	AltConf
5	A	486	Total 486	O 486	0	0
5	B	507	Total 507	O 507	0	0

3 Residue-property plots [i](#)


These plots are drawn for all protein, RNA, DNA and oligosaccharide chains in the entry. The first graphic for a chain summarises the proportions of the various outlier classes displayed in the second graphic. The second graphic shows the sequence view annotated by issues in geometry and electron density. Residues are color-coded according to the number of geometric quality criteria for which they contain at least one outlier: green = 0, yellow = 1, orange = 2 and red = 3 or more. A red dot above a residue indicates a poor fit to the electron density ($RSRZ > 2$). Stretches of 2 or more consecutive residues without any outlier are shown as a green connector. Residues present in the sample, but not in the model, are shown in grey.

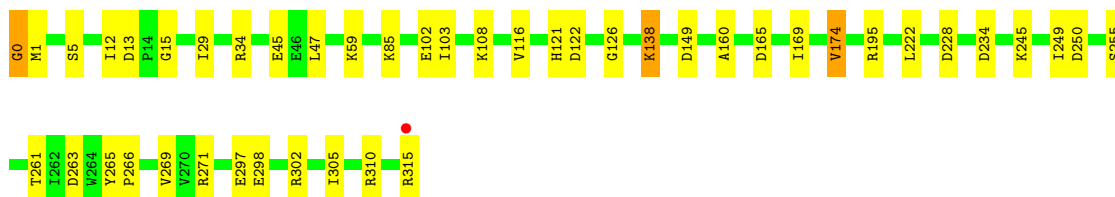
- Molecule 1: Parathion hydrolase

Chain A:  84% 16%



- Molecule 1: Parathion hydrolase

Chain B:  86% 13%



4 Data and refinement statistics

Property	Value	Source
Space group	P 64	Depositor
Cell constants a, b, c, α , β , γ	174.96Å 174.96Å 62.07Å 90.00° 90.00° 120.00°	Depositor
Resolution (Å)	48.01 – 1.80 48.01 – 1.80	Depositor EDS
% Data completeness (in resolution range)	100.0 (48.01-1.80) 100.0 (48.01-1.80)	Depositor EDS
R_{merge}	(Not available)	Depositor
R_{sym}	(Not available)	Depositor
$\langle I/\sigma(I) \rangle$ ¹	3.82 (at 1.79Å)	Xtrriage
Refinement program	REFMAC 5.7.0032	Depositor
R, R_{free}	0.130 , 0.160 0.144 , 0.171	Depositor DCC
R_{free} test set	5032 reflections (5.00%)	wwPDB-VP
Wilson B-factor (Å ²)	20.1	Xtrriage
Anisotropy	0.047	Xtrriage
Bulk solvent k_{sol} (e/Å ³), B_{sol} (Å ²)	0.33 , 43.5	EDS
L-test for twinning ²	$\langle L \rangle = 0.49$, $\langle L^2 \rangle = 0.32$	Xtrriage
Estimated twinning fraction	0.026 for h,-h-k,-l	Xtrriage
F_o, F_c correlation	0.97	EDS
Total number of atoms	6244	wwPDB-VP
Average B, all atoms (Å ²)	23.0	wwPDB-VP

Xtrriage's analysis on translational NCS is as follows: *The largest off-origin peak in the Patterson function is 3.12% of the height of the origin peak. No significant pseudotranslation is detected.*

¹Intensities estimated from amplitudes.

²Theoretical values of $\langle |L| \rangle$, $\langle L^2 \rangle$ for acentric reflections are 0.5, 0.333 respectively for untwinned datasets, and 0.375, 0.2 for perfectly twinned datasets.

5 Model quality [i](#)

5.1 Standard geometry [i](#)

Bond lengths and bond angles in the following residue types are not validated in this section: MYR, KCX, GOL, CO

The Z score for a bond length (or angle) is the number of standard deviations the observed value is removed from the expected value. A bond length (or angle) with $|Z| > 5$ is considered an outlier worth inspection. RMSZ is the root-mean-square of all Z scores of the bond lengths (or angles).

Mol	Chain	Bond lengths		Bond angles	
		RMSZ	# Z >5	RMSZ	# Z >5
1	A	1.49	10/2676 (0.4%)	1.24	9/3620 (0.2%)
1	B	1.51	19/2706 (0.7%)	1.25	9/3660 (0.2%)
All	All	1.50	29/5382 (0.5%)	1.25	18/7280 (0.2%)

Chiral center outliers are detected by calculating the chiral volume of a chiral center and verifying if the center is modelled as a planar moiety or with the opposite hand. A planarity outlier is detected by checking planarity of atoms in a peptide group, atoms in a mainchain group or atoms of a sidechain that are expected to be planar.

Mol	Chain	#Chirality outliers	#Planarity outliers
1	A	0	1
1	B	0	1
All	All	0	2

The worst 5 of 29 bond length outliers are listed below:

Mol	Chain	Res	Type	Atoms	Z	Observed(Å)	Ideal(Å)
1	B	266	PRO	CA-C	12.00	1.58	1.51
1	B	34	ARG	NE-CZ	8.51	1.42	1.33
1	B	261	THR	N-CA	7.85	1.55	1.46
1	B	174	VAL	C-O	7.46	1.34	1.24
1	A	261	THR	CB-CG2	-6.90	1.29	1.52

The worst 5 of 18 bond angle outliers are listed below:

Mol	Chain	Res	Type	Atoms	Z	Observed(°)	Ideal(°)
1	A	261	THR	CA-CB-OG1	-7.48	98.38	109.60
1	B	261	THR	CA-CB-OG1	-7.17	98.84	109.60
1	B	249	ILE	N-CA-C	6.25	117.74	110.62
1	B	165	ASP	N-CA-C	5.78	119.91	112.86

Continued on next page...

Continued from previous page...

Mol	Chain	Res	Type	Atoms	Z	Observed(°)	Ideal(°)
1	A	5	SER	CB-CA-C	-5.70	99.05	109.54

There are no chirality outliers.

All (2) planarity outliers are listed below:

Mol	Chain	Res	Type	Group
1	A	222	LEU	Peptide
1	B	222	LEU	Peptide

5.2 Too-close contacts [i](#)

In the following table, the Non-H and H(model) columns list the number of non-hydrogen atoms and hydrogen atoms in the chain respectively. The H(added) column lists the number of hydrogen atoms added and optimized by MolProbity. The Clashes column lists the number of clashes within the asymmetric unit, whereas Symm-Clashes lists symmetry-related clashes.

Mol	Chain	Non-H	H(model)	H(added)	Clashes	Symm-Clashes
1	A	2591	0	2688	41	0
1	B	2612	0	2724	28	1
2	A	2	0	0	0	0
2	B	2	0	0	0	0
3	A	6	0	8	0	0
3	B	6	0	8	0	0
4	A	16	0	27	1	0
4	B	16	0	27	0	0
5	A	486	0	0	28	1
5	B	507	0	0	24	0
All	All	6244	0	5482	69	1

The all-atom clashscore is defined as the number of clashes found per 1000 atoms (including hydrogen atoms). The all-atom clashscore for this structure is 6.

The worst 5 of 69 close contacts within the same asymmetric unit are listed below, sorted by their clash magnitude.

Atom-1	Atom-2	Interatomic distance (Å)	Clash overlap (Å)
1:A:271[B]:ARG:CZ	5:A:722:HOH:O	1.94	1.14
1:A:19:LEU:HG	5:A:982:HOH:O	0.98	1.13
1:A:261:THR:HG22	5:A:944:HOH:O	1.45	1.12
1:B:302[B]:ARG:HD2	5:B:642:HOH:O	1.47	1.12
1:A:302[B]:ARG:HD2	5:A:604:HOH:O	1.51	1.05

All (1) symmetry-related close contacts are listed below. The label for Atom-2 includes the symmetry operator and encoded unit-cell translations to be applied.

Atom-1	Atom-2	Interatomic distance (Å)	Clash overlap (Å)
1:B:298:GLU:OE1	5:A:945:HOH:O[6_645]	2.02	0.18

5.3 Torsion angles [i](#)

5.3.1 Protein backbone [i](#)

In the following table, the Percentiles column shows the percent Ramachandran outliers of the chain as a percentile score with respect to all X-ray entries followed by that with respect to entries of similar resolution.

The Analysed column shows the number of residues for which the backbone conformation was analysed, and the total number of residues.

Mol	Chain	Analysed	Favoured	Allowed	Outliers	Percentiles	
1	A	328/316 (104%)	325 (99%)	3 (1%)	0	100	100
1	B	332/316 (105%)	328 (99%)	4 (1%)	0	100	100
All	All	660/632 (104%)	653 (99%)	7 (1%)	0	100	100

There are no Ramachandran outliers to report.

5.3.2 Protein sidechains [i](#)

In the following table, the Percentiles column shows the percent sidechain outliers of the chain as a percentile score with respect to all X-ray entries followed by that with respect to entries of similar resolution.

The Analysed column shows the number of residues for which the sidechain conformation was analysed, and the total number of residues.

Mol	Chain	Analysed	Rotameric	Outliers	Percentiles	
1	A	285/270 (106%)	283 (99%)	2 (1%)	76	73
1	B	289/270 (107%)	288 (100%)	1 (0%)	86	86
All	All	574/540 (106%)	571 (100%)	3 (0%)	78	80

All (3) residues with a non-rotameric sidechain are listed below:

Mol	Chain	Res	Type
1	A	255	SER
1	A	261	THR
1	B	255	SER

Sometimes sidechains can be flipped to improve hydrogen bonding and reduce clashes. All (2) such sidechains are listed below:

Mol	Chain	Res	Type
1	A	256	HIS
1	B	121	HIS

5.3.3 RNA [i](#)

There are no RNA molecules in this entry.

5.4 Non-standard residues in protein, DNA, RNA chains [i](#)

2 non-standard protein/DNA/RNA residues are modelled in this entry.

In the following table, the Counts columns list the number of bonds (or angles) for which Mogul statistics could be retrieved, the number of bonds (or angles) that are observed in the model and the number of bonds (or angles) that are defined in the Chemical Component Dictionary. The Link column lists molecule types, if any, to which the group is linked. The Z score for a bond length (or angle) is the number of standard deviations the observed value is removed from the expected value. A bond length (or angle) with $|Z| > 2$ is considered an outlier worth inspection. RMSZ is the root-mean-square of all Z scores of the bond lengths (or angles).

Mol	Type	Chain	Res	Link	Bond lengths			Bond angles		
					Counts	RMSZ	# Z > 2	Counts	RMSZ	# Z > 2
1	KCX	B	138	2,1	10,11,12	1.25	1 (10%)	6,12,14	1.25	1 (16%)
1	KCX	A	138	2,1	10,11,12	1.09	1 (10%)	6,12,14	0.83	0

In the following table, the Chirals column lists the number of chiral outliers, the number of chiral centers analysed, the number of these observed in the model and the number defined in the Chemical Component Dictionary. Similar counts are reported in the Torsion and Rings columns. '-' means no outliers of that kind were identified.

Mol	Type	Chain	Res	Link	Chirals	Torsions	Rings
1	KCX	B	138	2,1	-	0/9/10/12	-
1	KCX	A	138	2,1	-	0/9/10/12	-

All (2) bond length outliers are listed below:

Mol	Chain	Res	Type	Atoms	Z	Observed(Å)	Ideal(Å)
1	A	138	KCX	OQ1-CX	2.81	1.26	1.21
1	B	138	KCX	OQ1-CX	2.77	1.26	1.21

All (1) bond angle outliers are listed below:

Mol	Chain	Res	Type	Atoms	Z	Observed(°)	Ideal(°)
1	B	138	KCX	OQ1-CX-NZ	-2.43	121.23	124.92

There are no chirality outliers.

There are no torsion outliers.

There are no ring outliers.

1 monomer is involved in 1 short contact:

Mol	Chain	Res	Type	Clashes	Symm-Clashes
1	B	138	KCX	1	0

5.5 Carbohydrates [i](#)

There are no oligosaccharides in this entry.

5.6 Ligand geometry [i](#)

Of 8 ligands modelled in this entry, 4 are monoatomic - leaving 4 for Mogul analysis.

In the following table, the Counts columns list the number of bonds (or angles) for which Mogul statistics could be retrieved, the number of bonds (or angles) that are observed in the model and the number of bonds (or angles) that are defined in the Chemical Component Dictionary. The Link column lists molecule types, if any, to which the group is linked. The Z score for a bond length (or angle) is the number of standard deviations the observed value is removed from the expected value. A bond length (or angle) with $|Z| > 2$ is considered an outlier worth inspection. RMSZ is the root-mean-square of all Z scores of the bond lengths (or angles).

Mol	Type	Chain	Res	Link	Bond lengths			Bond angles		
					Counts	RMSZ	$\# Z > 2$	Counts	RMSZ	$\# Z > 2$
3	GOL	B	403	-	5,5,5	0.74	0	5,5,5	1.43	1 (20%)
4	MYR	A	404	2	15,15,15	0.83	1 (6%)	15,15,15	1.38	3 (20%)
3	GOL	A	403	-	5,5,5	1.27	0	5,5,5	1.67	1 (20%)
4	MYR	B	404	2	15,15,15	0.72	0	15,15,15	1.33	3 (20%)

In the following table, the Chirals column lists the number of chiral outliers, the number of chiral

centers analysed, the number of these observed in the model and the number defined in the Chemical Component Dictionary. Similar counts are reported in the Torsion and Rings columns. '-' means no outliers of that kind were identified.

Mol	Type	Chain	Res	Link	Chirals	Torsions	Rings
3	GOL	B	403	-	-	2/4/4/4	-
4	MYR	A	404	2	-	7/13/13/13	-
3	GOL	A	403	-	-	3/4/4/4	-
4	MYR	B	404	2	-	9/13/13/13	-

All (1) bond length outliers are listed below:

Mol	Chain	Res	Type	Atoms	Z	Observed(Å)	Ideal(Å)
4	A	404	MYR	O1-C1	2.44	1.30	1.22

The worst 5 of 8 bond angle outliers are listed below:

Mol	Chain	Res	Type	Atoms	Z	Observed(°)	Ideal(°)
4	B	404	MYR	O1-C1-C2	-2.68	114.60	123.09
3	A	403	GOL	O1-C1-C2	2.64	122.28	110.38
4	A	404	MYR	O1-C1-C2	-2.52	115.08	123.09
4	A	404	MYR	C3-C2-C1	-2.42	108.19	114.51
4	B	404	MYR	O2-C1-O1	2.42	129.54	123.33

There are no chirality outliers.

5 of 21 torsion outliers are listed below:

Mol	Chain	Res	Type	Atoms
3	A	403	GOL	C1-C2-C3-O3
3	B	403	GOL	C1-C2-C3-O3
3	A	403	GOL	O2-C2-C3-O3
4	A	404	MYR	C4-C5-C6-C7
4	A	404	MYR	C11-C10-C9-C8

There are no ring outliers.

1 monomer is involved in 1 short contact:

Mol	Chain	Res	Type	Clashes	Symm-Clashes
4	A	404	MYR	1	0

5.7 Other polymers [i](#)

There are no such residues in this entry.

5.8 Polymer linkage issues [i](#)

There are no chain breaks in this entry.

6 Fit of model and data [i](#)

6.1 Protein, DNA and RNA chains [i](#)

In the following table, the column labelled ‘#RSRZ > 2’ contains the number (and percentage) of RSRZ outliers, followed by percent RSRZ outliers for the chain as percentile scores relative to all X-ray entries and entries of similar resolution. The OWAB column contains the minimum, median, 95th percentile and maximum values of the occupancy-weighted average B-factor per residue. The column labelled ‘Q < 0.9’ lists the number of (and percentage) of residues with an average occupancy less than 0.9.

Mol	Chain	Analysed	<RSRZ>	#RSRZ>2	OWAB(Å ²)	Q<0.9
1	A	314/316 (99%)	-0.55	1 (0%) 90 90	10, 18, 32, 47	16 (5%)
1	B	315/316 (99%)	-0.55	1 (0%) 90 90	10, 18, 30, 51	19 (6%)
All	All	629/632 (99%)	-0.55	2 (0%) 90 90	10, 18, 31, 51	35 (5%)

All (2) RSRZ outliers are listed below:

Mol	Chain	Res	Type	RSRZ
1	B	315	ARG	2.2
1	A	9	GLY	2.1

6.2 Non-standard residues in protein, DNA, RNA chains [i](#)

In the following table, the Atoms column lists the number of modelled atoms in the group and the number defined in the chemical component dictionary. The B-factors column lists the minimum, median, 95th percentile and maximum values of B factors of atoms in the group. The column labelled ‘Q < 0.9’ lists the number of atoms with occupancy less than 0.9.

Mol	Type	Chain	Res	Atoms	RSCC	RSR	B-factors(Å ²)	Q<0.9
1	KCX	A	138	12/13	0.98	0.04	12,12,14,14	0
1	KCX	B	138	12/13	0.98	0.04	11,12,13,14	0

6.3 Carbohydrates [i](#)

There are no oligosaccharides in this entry.

6.4 Ligands [i](#)

In the following table, the Atoms column lists the number of modelled atoms in the group and the number defined in the chemical component dictionary. The B-factors column lists the minimum,

median, 95th percentile and maximum values of B factors of atoms in the group. The column labelled 'Q< 0.9' lists the number of atoms with occupancy less than 0.9.

Mol	Type	Chain	Res	Atoms	RSCC	RSR	B-factors(Å ²)	Q<0.9
4	MYR	A	404	16/16	0.89	0.16	25,38,43,44	0
4	MYR	B	404	16/16	0.90	0.16	25,41,46,48	0
3	GOL	B	403	6/6	0.92	0.13	28,42,46,48	0
3	GOL	A	403	6/6	0.93	0.11	24,36,38,46	0
2	CO	A	401	1/1	1.00	0.01	14,14,14,14	0
2	CO	A	402	1/1	1.00	0.03	16,16,16,16	0
2	CO	B	401	1/1	1.00	0.03	14,14,14,14	0
2	CO	B	402	1/1	1.00	0.03	15,15,15,15	0

6.5 Other polymers [i](#)

There are no such residues in this entry.