



Full wwPDB X-ray Structure Validation Report ⓘ

Mar 9, 2026 – 11:53 AM UTC

PDB ID : 7RD2 / pdb_00007rd2
Title : Co-crystal structure of Chaetomium glucosidase with compound 2
Authors : Karade, S.S.; Mariuzza, R.A.
Deposited on : 2021-07-09
Resolution : 2.61 Å(reported)

This is a Full wwPDB X-ray Structure Validation Report for a publicly released PDB entry.

We welcome your comments at validation@mail.wwpdb.org

A user guide is available at

<https://www.wwpdb.org/validation/2017/XrayValidationReportHelp>

with specific help available everywhere you see the ⓘ symbol.

The types of validation reports are described at

<http://www.wwpdb.org/validation/2017/FAQs#types>.

The following versions of software and data (see [references ⓘ](#)) were used in the production of this report:

MolProbity : 4-5-2 with Phenix2.0
Mogul : 2022.3.0, CSD as543be (2022)
Xtriage (Phenix) : 2.0
EDS : 3.0
Buster-report : wwPDB partial adaption of 1.1.7 (2018)
Percentile statistics : 20250101.v01 (using entries in the PDB archive January 1st 2025)
CCP4 : 9.0.010 (Gargrove)
Density-Fitness : 1.0.12
Ideal geometry (proteins) : Engh & Huber (2001)
Ideal geometry (DNA, RNA) : Parkinson et al. (1996)
Validation Pipeline (wwPDB-VP) : 2.49

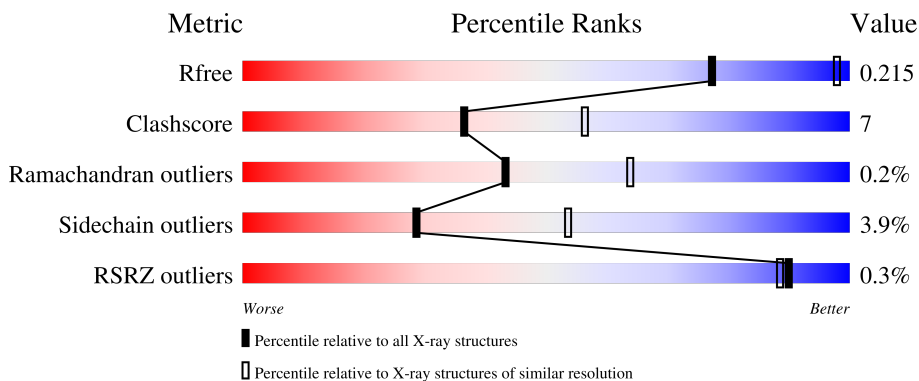
1 Overall quality at a glance

The following experimental techniques were used to determine the structure:

X-RAY DIFFRACTION

The reported resolution of this entry is 2.61 Å.

Percentile scores (ranging between 0-100) for global validation metrics of the entry are shown in the following graphic. The table shows the number of entries on which the scores are based.



Metric	Whole archive (#Entries)	Similar resolution (#Entries, resolution range(Å))
R_{free}	180053	4951 (2.64-2.60)
Clashscore	190562	5303 (2.64-2.60)
Ramachandran outliers	187476	5217 (2.64-2.60)
Sidechain outliers	187428	5217 (2.64-2.60)
RSRZ outliers	180081	4950 (2.64-2.60)

The table below summarises the geometric issues observed across the polymeric chains and their fit to the electron density. The red, orange, yellow and green segments of the lower bar indicate the fraction of residues that contain outliers for ≥ 3 , 2, 1 and 0 types of geometric quality criteria respectively. A grey segment represents the fraction of residues that are not modelled. The numeric value for each fraction is indicated below the corresponding segment, with a dot representing fractions $\leq 5\%$. The upper red bar (where present) indicates the fraction of residues that have poor fit to the electron density. The numeric value is given above the bar.

Mol	Chain	Length	Quality of chain
1	A	819	 78% 14% • 7%
1	B	819	 77% 15% • 7%
2	C	2	 100%

2 Entry composition [i](#)

There are 6 unique types of molecules in this entry. The entry contains 12347 atoms, of which 0 are hydrogens and 0 are deuteriums.

In the tables below, the ZeroOcc column contains the number of atoms modelled with zero occupancy, the AltConf column contains the number of residues with at least one atom in alternate conformation and the Trace column contains the number of residues modelled with at most 2 atoms.

- Molecule 1 is a protein called Chaetomium alpha glucosidase.

Mol	Chain	Residues	Atoms					ZeroOcc	AltConf	Trace
			Total	C	N	O	S			
1	A	765	6063	3898	1022	1130	13	0	2	0
1	B	764	6079	3901	1021	1144	13	0	0	0

There are 78 discrepancies between the modelled and reference sequences:

Chain	Residue	Modelled	Actual	Comment	Reference
A	-1	MET	-	initiating methionine	UNP G0SFD1
A	0	GLY	-	expression tag	UNP G0SFD1
A	1	ILE	-	expression tag	UNP G0SFD1
A	2	LEU	-	expression tag	UNP G0SFD1
A	3	PRO	-	expression tag	UNP G0SFD1
A	4	SER	-	expression tag	UNP G0SFD1
A	5	PRO	-	expression tag	UNP G0SFD1
A	6	GLY	-	expression tag	UNP G0SFD1
A	7	MET	-	expression tag	UNP G0SFD1
A	8	PRO	-	expression tag	UNP G0SFD1
A	9	ALA	-	expression tag	UNP G0SFD1
A	10	LEU	-	expression tag	UNP G0SFD1
A	11	LEU	-	expression tag	UNP G0SFD1
A	12	SER	-	expression tag	UNP G0SFD1
A	13	LEU	-	expression tag	UNP G0SFD1
A	14	VAL	-	expression tag	UNP G0SFD1
A	15	SER	-	expression tag	UNP G0SFD1
A	16	LEU	-	expression tag	UNP G0SFD1
A	17	LEU	-	expression tag	UNP G0SFD1
A	18	SER	-	expression tag	UNP G0SFD1
A	19	VAL	-	expression tag	UNP G0SFD1
A	20	LEU	-	expression tag	UNP G0SFD1
A	21	LEU	-	expression tag	UNP G0SFD1
A	22	MET	-	expression tag	UNP G0SFD1
A	23	GLY	-	expression tag	UNP G0SFD1

Continued on next page...

Continued from previous page...

Chain	Residue	Modelled	Actual	Comment	Reference
A	24	CYS	-	expression tag	UNP G0SFD1
A	25	VAL	-	expression tag	UNP G0SFD1
A	26	ALA	-	expression tag	UNP G0SFD1
A	27	GLU	-	expression tag	UNP G0SFD1
A	28	THR	-	expression tag	UNP G0SFD1
A	29	GLY	-	expression tag	UNP G0SFD1
A	810	SER	-	expression tag	UNP G0SFD1
A	811	GLY	-	expression tag	UNP G0SFD1
A	812	HIS	-	expression tag	UNP G0SFD1
A	813	HIS	-	expression tag	UNP G0SFD1
A	814	HIS	-	expression tag	UNP G0SFD1
A	815	HIS	-	expression tag	UNP G0SFD1
A	816	HIS	-	expression tag	UNP G0SFD1
A	817	HIS	-	expression tag	UNP G0SFD1
B	-1	MET	-	initiating methionine	UNP G0SFD1
B	0	GLY	-	expression tag	UNP G0SFD1
B	1	ILE	-	expression tag	UNP G0SFD1
B	2	LEU	-	expression tag	UNP G0SFD1
B	3	PRO	-	expression tag	UNP G0SFD1
B	4	SER	-	expression tag	UNP G0SFD1
B	5	PRO	-	expression tag	UNP G0SFD1
B	6	GLY	-	expression tag	UNP G0SFD1
B	7	MET	-	expression tag	UNP G0SFD1
B	8	PRO	-	expression tag	UNP G0SFD1
B	9	ALA	-	expression tag	UNP G0SFD1
B	10	LEU	-	expression tag	UNP G0SFD1
B	11	LEU	-	expression tag	UNP G0SFD1
B	12	SER	-	expression tag	UNP G0SFD1
B	13	LEU	-	expression tag	UNP G0SFD1
B	14	VAL	-	expression tag	UNP G0SFD1
B	15	SER	-	expression tag	UNP G0SFD1
B	16	LEU	-	expression tag	UNP G0SFD1
B	17	LEU	-	expression tag	UNP G0SFD1
B	18	SER	-	expression tag	UNP G0SFD1
B	19	VAL	-	expression tag	UNP G0SFD1
B	20	LEU	-	expression tag	UNP G0SFD1
B	21	LEU	-	expression tag	UNP G0SFD1
B	22	MET	-	expression tag	UNP G0SFD1
B	23	GLY	-	expression tag	UNP G0SFD1
B	24	CYS	-	expression tag	UNP G0SFD1
B	25	VAL	-	expression tag	UNP G0SFD1
B	26	ALA	-	expression tag	UNP G0SFD1

Continued on next page...

Continued from previous page...

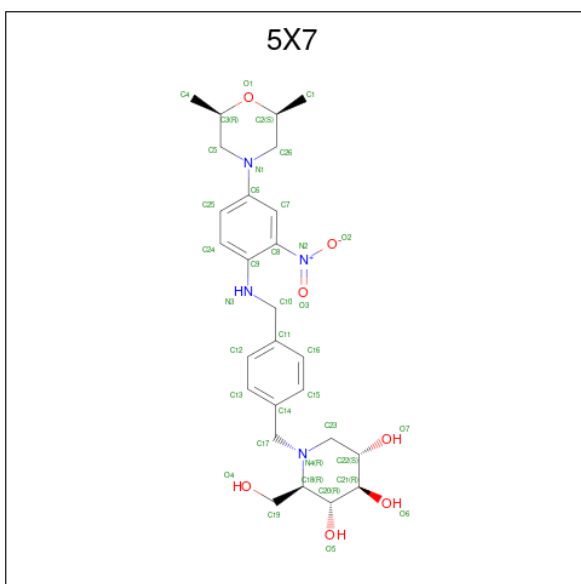
Chain	Residue	Modelled	Actual	Comment	Reference
B	27	GLU	-	expression tag	UNP G0SFD1
B	28	THR	-	expression tag	UNP G0SFD1
B	29	GLY	-	expression tag	UNP G0SFD1
B	810	SER	-	expression tag	UNP G0SFD1
B	811	GLY	-	expression tag	UNP G0SFD1
B	812	HIS	-	expression tag	UNP G0SFD1
B	813	HIS	-	expression tag	UNP G0SFD1
B	814	HIS	-	expression tag	UNP G0SFD1
B	815	HIS	-	expression tag	UNP G0SFD1
B	816	HIS	-	expression tag	UNP G0SFD1
B	817	HIS	-	expression tag	UNP G0SFD1

- Molecule 2 is an oligosaccharide called 2-acetamido-2-deoxy-beta-D-glucopyranose-(1-4)-2-acetamido-2-deoxy-beta-D-glucopyranose.



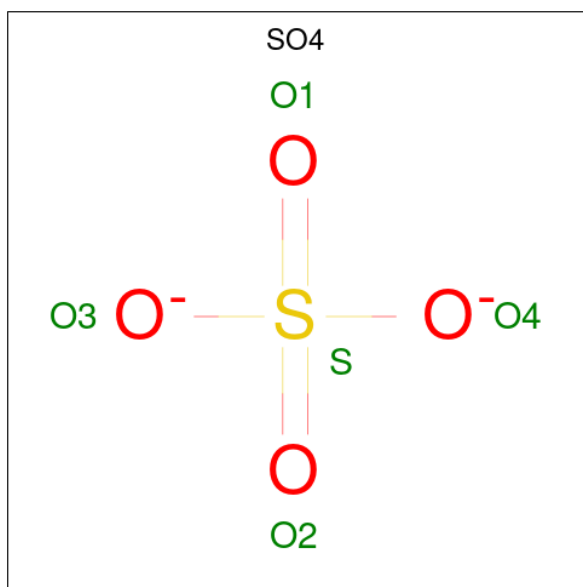
Mol	Chain	Residues	Atoms			ZeroOcc	AltConf	Trace	
			Total	C	N				O
2	C	2	28	16	2	10	0	0	0

- Molecule 3 is (2R,3R,4R,5S)-1-{{4-((2R,6S)-2,6-dimethylmorpholin-4-yl)-2-nitroanilino}methyl)phenylmethyl}-2-(hydroxymethyl)piperidine-3,4,5-triol (CCD ID: 5X7) (formula: $C_{26}H_{36}N_4O_7$) (labeled as "Ligand of Interest" by depositor).



Mol	Chain	Residues	Atoms				ZeroOcc	AltConf
3	A	1	Total	C	N	O	0	0
			37	26	4	7		
3	B	1	Total	C	N	O	0	0
			37	26	4	7		

- Molecule 4 is SULFATE ION (CCD ID: SO4) (formula: O₄S).



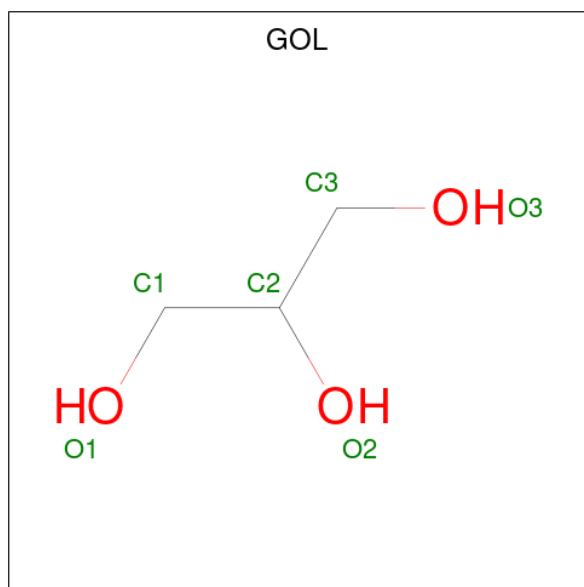
Mol	Chain	Residues	Atoms			ZeroOcc	AltConf
4	A	1	Total	O	S	0	0
			5	4	1		
4	A	1	Total	O	S	0	0
			5	4	1		
4	A	1	Total	O	S	0	0
			5	4	1		
4	A	1	Total	O	S	0	0
			5	4	1		
4	A	1	Total	O	S	0	0
			5	4	1		
4	A	1	Total	O	S	0	0
			5	4	1		
4	B	1	Total	O	S	0	0
			5	4	1		
4	B	1	Total	O	S	0	0
			5	4	1		

Continued on next page...

Continued from previous page...

Mol	Chain	Residues	Atoms	ZeroOcc	AltConf
4	B	1	Total O S 5 4 1	0	0
4	B	1	Total O S 5 4 1	0	0

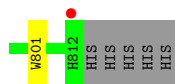
- Molecule 5 is GLYCEROL (CCD ID: GOL) (formula: C₃H₈O₃).



Mol	Chain	Residues	Atoms	ZeroOcc	AltConf
5	B	1	Total C O 6 3 3	0	0

- Molecule 6 is water.

Mol	Chain	Residues	Atoms	ZeroOcc	AltConf
6	A	16	Total O 16 16	0	0
6	B	21	Total O 21 21	0	0



- Molecule 2: 2-acetamido-2-deoxy-beta-D-glucopyranose-(1-4)-2-acetamido-2-deoxy-beta-D-glucopyranose

Chain C: 100%



4 Data and refinement statistics i

Property	Value	Source
Space group	I 2 2 2	Depositor
Cell constants a, b, c, α , β , γ	134.56Å 178.39Å 179.68Å 90.00° 90.00° 90.00°	Depositor
Resolution (Å)	46.68 – 2.61 46.68 – 2.61	Depositor EDS
% Data completeness (in resolution range)	99.6 (46.68-2.61) 99.7 (46.68-2.61)	Depositor EDS
R_{merge}	0.18	Depositor
R_{sym}	(Not available)	Depositor
$\langle I/\sigma(I) \rangle$ ¹	1.56 (at 2.61Å)	Xtrriage
Refinement program	REFMAC 5.8.0258	Depositor
R, R_{free}	0.176 , 0.229 (Not available) , 0.215	Depositor DCC
R_{free} test set	3347 reflections (5.07%)	wwPDB-VP
Wilson B-factor (Å ²)	50.8	Xtrriage
Anisotropy	0.517	Xtrriage
Bulk solvent k_{sol} (e/Å ³), B_{sol} (Å ²)	0.33 , 26.5	EDS
L-test for twinning ²	$\langle L \rangle = 0.48$, $\langle L^2 \rangle = 0.31$	Xtrriage
Estimated twinning fraction	0.016 for -h,-l,-k	Xtrriage
F_o, F_c correlation	0.96	EDS
Total number of atoms	12347	wwPDB-VP
Average B, all atoms (Å ²)	53.0	wwPDB-VP

Xtrriage's analysis on translational NCS is as follows: *The largest off-origin peak in the Patterson function is 2.93% of the height of the origin peak. No significant pseudotranslation is detected.*

¹Intensities estimated from amplitudes.

²Theoretical values of $\langle |L| \rangle$, $\langle L^2 \rangle$ for acentric reflections are 0.5, 0.333 respectively for untwinned datasets, and 0.375, 0.2 for perfectly twinned datasets.

5 Model quality i

5.1 Standard geometry i

Bond lengths and bond angles in the following residue types are not validated in this section: NAG, GOL, SO4, 5X7

The Z score for a bond length (or angle) is the number of standard deviations the observed value is removed from the expected value. A bond length (or angle) with $|Z| > 5$ is considered an outlier worth inspection. RMSZ is the root-mean-square of all Z scores of the bond lengths (or angles).

Mol	Chain	Bond lengths		Bond angles	
		RMSZ	# Z >5	RMSZ	# Z >5
1	A	0.63	1/6245 (0.0%)	1.16	11/8506 (0.1%)
1	B	0.63	2/6255 (0.0%)	1.16	12/8513 (0.1%)
All	All	0.63	3/12500 (0.0%)	1.16	23/17019 (0.1%)

All (3) bond length outliers are listed below:

Mol	Chain	Res	Type	Atoms	Z	Observed(Å)	Ideal(Å)
1	A	68	SER	CA-CB	-6.85	1.48	1.54
1	B	645	HIS	CE1-NE2	6.07	1.38	1.32
1	B	397	HIS	CE1-NE2	5.16	1.37	1.32

All (23) bond angle outliers are listed below:

Mol	Chain	Res	Type	Atoms	Z	Observed(°)	Ideal(°)
1	A	573	ARG	CG-CD-NE	-8.86	92.52	112.00
1	A	382	GLU	CB-CG-CD	7.51	125.38	112.60
1	B	45	ASN	CB-CA-C	6.97	122.69	110.85
1	A	575	ARG	CB-CA-C	6.81	121.15	109.51
1	A	684	LYS	CB-CA-C	6.48	119.59	109.42
1	B	684	LYS	CB-CA-C	6.45	119.65	109.27
1	A	594	PRO	N-CA-C	-6.20	101.35	111.21
1	B	567	LYS	CB-CA-C	6.02	118.78	109.03
1	B	755	THR	CA-CB-OG1	-5.80	100.90	109.60
1	B	770	THR	CB-CA-C	5.80	120.71	110.85
1	B	624	THR	CA-CB-OG1	-5.73	101.01	109.60
1	A	788	GLU	CB-CG-CD	5.72	122.33	112.60
1	B	186	GLU	CB-CG-CD	5.64	122.19	112.60
1	A	802	THR	CA-CB-OG1	-5.55	101.27	109.60
1	A	339	LYS	CB-CA-C	5.41	119.30	109.83
1	B	33	GLU	CB-CA-C	5.38	120.31	110.10

Continued on next page...

Continued from previous page...

Mol	Chain	Res	Type	Atoms	Z	Observed(°)	Ideal(°)
1	B	575	ARG	CB-CG-CD	-5.31	99.09	111.30
1	A	79	GLU	CB-CG-CD	5.30	121.61	112.60
1	A	574	GLY	CA-C-N	-5.20	113.17	122.07
1	A	574	GLY	C-N-CA	-5.20	113.17	122.07
1	B	348	LYS	CB-CA-C	5.04	119.17	110.79
1	B	186	GLU	N-CA-C	-5.02	107.55	113.97
1	B	188	ASP	CA-CB-CG	5.02	117.62	112.60

There are no chirality outliers.

There are no planarity outliers.

5.2 Too-close contacts

In the following table, the Non-H and H(model) columns list the number of non-hydrogen atoms and hydrogen atoms in the chain respectively. The H(added) column lists the number of hydrogen atoms added and optimized by MolProbity. The Clashes column lists the number of clashes within the asymmetric unit, whereas Symm-Clashes lists symmetry-related clashes.

Mol	Chain	Non-H	H(model)	H(added)	Clashes	Symm-Clashes
1	A	6063	0	5728	81	0
1	B	6079	0	5739	91	0
2	C	28	0	25	0	0
3	A	37	0	0	0	0
3	B	37	0	0	1	0
4	A	40	0	0	1	0
4	B	20	0	0	1	0
5	B	6	0	8	0	0
6	A	16	0	0	0	0
6	B	21	0	0	0	0
All	All	12347	0	11500	171	0

The all-atom clashscore is defined as the number of clashes found per 1000 atoms (including hydrogen atoms). The all-atom clashscore for this structure is 7.

All (171) close contacts within the same asymmetric unit are listed below, sorted by their clash magnitude.

Atom-1	Atom-2	Interatomic distance (Å)	Clash overlap (Å)
1:B:561:ARG:HE	1:B:664:HIS:HD2	1.11	0.98
1:B:572:TRP:H	1:B:600:HIS:HD2	1.07	0.92
1:A:438:ASP:OD2	1:A:519:LEU:O	1.87	0.91

Continued on next page...

Continued from previous page...

Atom-1	Atom-2	Interatomic distance (Å)	Clash overlap (Å)
1:A:451:MET:HE3	1:A:540:LEU:HD22	1.55	0.88
1:A:256:ASP:OD2	1:B:262:LYS:HE3	1.77	0.84
1:B:561:ARG:HE	1:B:664:HIS:CD2	1.96	0.83
1:B:572:TRP:H	1:B:600:HIS:CD2	1.97	0.78
1:B:217:HIS:HD2	1:B:219:LEU:H	1.32	0.78
1:A:572:TRP:H	1:A:600:HIS:HD2	1.32	0.77
1:B:451:MET:HE1	1:B:544:GLN:HB2	1.65	0.77
1:A:110:ARG:HH21	1:A:323:GLN:HG3	1.53	0.73
1:A:451:MET:HE1	1:A:540:LEU:HB3	1.70	0.73
1:B:217:HIS:HE1	1:B:267:ASP:O	1.73	0.72
1:B:181:ASN:ND2	1:B:186:GLU:HG3	2.05	0.72
1:B:451:MET:CE	1:B:544:GLN:HB2	2.22	0.70
1:A:743:TYR:HB2	1:A:760:TYR:CD1	2.27	0.70
1:B:106:TYR:CE2	1:B:360:GLY:HA2	2.28	0.69
1:A:234[A]:THR:HG23	1:A:284:GLY:HA2	1.76	0.68
1:A:598:GLU:OE2	1:A:600:HIS:HE1	1.79	0.66
1:B:106:TYR:CD2	1:B:360:GLY:HA2	2.31	0.65
1:B:95:ASN:HD22	1:B:97:GLY:H	1.44	0.65
1:A:786:ASN:ND2	1:A:788:GLU:H	1.95	0.65
1:A:128:SER:O	1:A:143:ALA:HA	1.98	0.62
1:A:451:MET:CE	1:A:540:LEU:HD22	2.28	0.62
1:B:464:GLY:HA2	4:B:903:SO4:O3	1.99	0.62
1:B:114:GLN:NE2	1:B:414:ARG:HH12	1.98	0.62
1:B:786:ASN:HD22	1:B:789:THR:H	1.48	0.62
1:A:456:TRP:CE2	1:A:480:PRO:HA	2.35	0.61
1:B:766:ASN:O	1:B:770:THR:HG23	2.00	0.60
1:A:110:ARG:NH2	1:A:323:GLN:HG3	2.17	0.59
1:B:217:HIS:CD2	1:B:218:ASP:N	2.71	0.59
1:A:423:TRP:H	1:A:484:ASN:HD22	1.52	0.58
1:A:786:ASN:HD22	1:A:789:THR:H	1.51	0.58
1:B:114:GLN:HE22	1:B:414:ARG:HH22	1.51	0.58
1:B:145:ILE:CD1	1:B:301:ILE:CD1	2.82	0.57
1:B:33:GLU:HB3	1:B:536:ARG:HH12	1.69	0.57
1:A:354:MET:HE1	1:A:781:ALA:HB2	1.87	0.57
1:B:728:SER:N	1:B:729:PRO:HD3	2.19	0.57
1:B:786:ASN:ND2	1:B:788:GLU:H	2.04	0.56
1:A:233:LEU:HD22	1:B:265:VAL:HG23	1.86	0.55
1:B:331:ARG:NH1	1:B:435:TRP:O	2.40	0.54
3:B:901:5X7:C10	3:B:901:5X7:O2	2.55	0.54
1:B:128:SER:O	1:B:143:ALA:HA	2.07	0.54
1:B:430:LEU:HB2	1:B:431:PRO:HD3	1.89	0.54

Continued on next page...

Continued from previous page...

Atom-1	Atom-2	Interatomic distance (Å)	Clash overlap (Å)
1:B:181:ASN:HD22	1:B:186:GLU:HG3	1.72	0.54
1:B:226:GLY:H	1:B:227:GLN:HE22	1.55	0.54
1:B:728:SER:N	1:B:729:PRO:CD	2.70	0.54
1:B:103:TRP:H	1:B:357:ASN:ND2	2.04	0.54
1:A:39:GLU:HA	1:A:39:GLU:OE2	2.08	0.53
1:B:194:ARG:CG	1:B:194:ARG:HH11	2.21	0.53
1:A:244:LYS:HB3	1:A:245:PRO:HD3	1.91	0.53
1:A:545:PHE:CZ	1:A:549:ARG:HD2	2.44	0.53
1:B:733:ASN:HB3	1:B:801:TRP:CG	2.44	0.53
1:B:485:PRO:HB3	1:B:606:TRP:CE2	2.44	0.52
1:B:217:HIS:CD2	1:B:218:ASP:H	2.28	0.52
1:A:423:TRP:H	1:A:484:ASN:ND2	2.08	0.51
1:A:659:ASP:HB2	1:A:663:GLU:O	2.10	0.51
1:A:234[B]:THR:HA	1:A:285:ASN:OD1	2.11	0.51
1:A:451:MET:HE1	1:A:540:LEU:CB	2.40	0.51
1:B:230:VAL:HA	1:B:288:ILE:O	2.11	0.50
1:B:553:ALA:O	1:B:573:ARG:NH2	2.43	0.50
1:A:588:TYR:CE1	1:A:673:ILE:CG1	2.94	0.50
1:B:590:ARG:HB3	1:B:591:PRO:HD2	1.93	0.50
1:B:456:TRP:CE2	1:B:480:PRO:HA	2.47	0.50
1:B:650:GLU:OE1	1:B:670:LYS:NZ	2.44	0.50
1:A:575:ARG:HB2	1:A:579:HIS:O	2.12	0.50
1:B:194:ARG:HH11	1:B:194:ARG:HG3	1.77	0.50
1:B:149:LEU:HD11	1:B:295:GLY:HA2	1.94	0.49
1:B:609:VAL:HG23	1:B:680:THR:HB	1.93	0.49
1:A:161:VAL:HG11	1:A:299:PHE:HE2	1.76	0.49
1:B:727:ARG:O	1:B:728:SER:HB3	2.13	0.49
1:A:720:GLY:HA2	1:A:724:ASN:OD1	2.11	0.49
1:A:743:TYR:HB2	1:A:760:TYR:CE1	2.46	0.49
1:B:68:SER:OG	1:B:69:LEU:N	2.45	0.49
1:A:71:THR:HB	1:A:163:PHE:CZ	2.47	0.49
1:A:598:GLU:OE2	1:A:600:HIS:CE1	2.63	0.49
1:B:575:ARG:NH1	1:B:598:GLU:OE2	2.40	0.49
1:B:786:ASN:HD21	1:B:788:GLU:HB2	1.78	0.49
1:A:234[A]:THR:HG23	1:A:284:GLY:CA	2.41	0.49
1:B:179:SER:HB3	1:B:185:TYR:CD2	2.48	0.48
1:B:425:GLU:HG2	1:B:447:TRP:NE1	2.27	0.48
1:A:428:HIS:O	1:A:431:PRO:HD2	2.13	0.48
1:A:144:ARG:HB2	1:A:317:LEU:HD21	1.94	0.48
1:A:569:ALA:HA	1:A:604:MET:CE	2.43	0.48
1:A:672:TYR:CE2	1:A:711:SER:HA	2.48	0.48

Continued on next page...

Continued from previous page...

Atom-1	Atom-2	Interatomic distance (Å)	Clash overlap (Å)
1:A:733:ASN:HB3	1:A:801:TRP:CG	2.48	0.48
1:B:615:ILE:O	1:B:619:SER:HB3	2.13	0.48
1:B:102:GLY:CA	1:B:357:ASN:HD21	2.27	0.47
1:B:226:GLY:H	1:B:227:GLN:NE2	2.12	0.47
1:A:354:MET:HE1	1:A:781:ALA:CB	2.45	0.47
1:B:561:ARG:NE	1:B:664:HIS:HD2	1.94	0.47
1:B:223:ARG:HH11	1:B:223:ARG:HG3	1.78	0.47
1:A:174:LEU:HD23	1:A:287:HIS:CD2	2.49	0.47
1:B:194:ARG:HG3	1:B:194:ARG:NH1	2.28	0.46
1:A:426:GLY:HA3	1:A:487:THR:OG1	2.15	0.46
1:A:451:MET:CE	1:A:540:LEU:HB3	2.42	0.46
1:A:174:LEU:HD23	1:A:287:HIS:HD2	1.80	0.46
1:A:234[A]:THR:HA	1:A:285:ASN:OD1	2.15	0.46
1:B:203:LEU:HD12	1:B:204:VAL:H	1.81	0.46
1:A:166:SER:HB2	1:A:240:LEU:HD13	1.97	0.46
1:B:728:SER:H	1:B:729:PRO:CD	2.29	0.46
1:A:194:ARG:HG3	1:A:200:ASN:OD1	2.17	0.46
1:B:786:ASN:HB2	1:B:793:GLN:NE2	2.30	0.46
1:B:134:GLY:O	1:B:139:GLY:HA2	2.17	0.45
1:B:123:LEU:HD11	1:B:159:THR:HG21	1.99	0.45
1:A:489:PHE:CE1	1:A:610:MET:HE3	2.52	0.45
1:B:672:TYR:CE1	1:B:711:SER:HA	2.52	0.45
1:B:419:ARG:HG3	1:B:421:PHE:CE1	2.52	0.45
1:B:609:VAL:CG2	1:B:680:THR:HB	2.46	0.45
1:A:585:LEU:O	1:A:586:ASP:C	2.60	0.45
1:B:203:LEU:HD11	1:B:301:ILE:HG23	1.99	0.45
1:B:317:LEU:HD12	1:B:317:LEU:O	2.17	0.45
1:A:381:GLU:HA	1:A:386:PHE:HB2	1.99	0.44
1:A:786:ASN:ND2	1:A:789:THR:H	2.14	0.44
1:A:234[A]:THR:CG2	1:A:284:GLY:HA2	2.46	0.44
1:A:594:PRO:HA	1:A:598:GLU:OE1	2.17	0.44
1:A:786:ASN:HD22	1:A:788:GLU:H	1.62	0.44
1:B:572:TRP:N	1:B:600:HIS:HD2	1.91	0.44
1:A:659:ASP:CB	1:A:663:GLU:H	2.31	0.44
1:B:217:HIS:CE1	1:B:267:ASP:O	2.63	0.44
1:B:600:HIS:HA	1:B:655:ASP:OD1	2.17	0.44
1:A:430:LEU:HB2	1:A:431:PRO:HD3	1.99	0.44
1:A:453:GLU:O	1:A:543:ARG:HD3	2.18	0.44
1:B:194:ARG:HA	1:B:199:GLY:O	2.18	0.44
1:A:299:PHE:HE1	1:A:301:ILE:HD11	1.82	0.43
1:A:672:TYR:CZ	1:A:711:SER:HA	2.53	0.43

Continued on next page...

Continued from previous page...

Atom-1	Atom-2	Interatomic distance (Å)	Clash overlap (Å)
1:B:105:GLU:HA	1:B:356:SER:OG	2.18	0.43
1:A:549:ARG:O	1:A:553:ALA:HB2	2.17	0.43
1:A:350:PHE:CZ	1:A:805[B]:VAL:HG11	2.54	0.43
1:A:451:MET:SD	1:A:455:GLY:HA2	2.58	0.43
1:B:786:ASN:HD22	1:B:788:GLU:H	1.66	0.43
1:B:486:PRO:HD2	1:B:606:TRP:HB3	2.01	0.43
1:A:569:ALA:HA	1:A:604:MET:HE2	2.00	0.43
1:A:65:ILE:HD13	1:A:197:ALA:HB1	2.01	0.43
1:B:707:TYR:HB3	1:B:770:THR:HG21	2.00	0.43
1:A:240:LEU:HD22	1:A:286:VAL:CG2	2.48	0.43
1:A:672:TYR:CG	1:A:734:ILE:HG21	2.54	0.43
1:B:140:SER:HB3	1:B:303:PHE:O	2.19	0.43
1:B:223:ARG:HG3	1:B:223:ARG:NH1	2.34	0.42
1:A:68:SER:OG	1:A:69:LEU:N	2.51	0.42
1:B:414:ARG:N	1:B:415:PRO:HD2	2.34	0.42
1:A:397:HIS:HD2	1:A:399:GLU:OE2	2.02	0.42
1:B:137:HIS:HD2	1:B:307:SER:OG	2.03	0.42
1:A:575:ARG:HH22	1:A:592:GLN:HE22	1.66	0.42
1:B:569:ALA:HB1	1:B:599:LEU:HD22	2.01	0.42
1:A:727:ARG:O	1:A:728:SER:HB3	2.19	0.42
1:A:375:TYR:O	1:A:376:ALA:C	2.62	0.42
1:A:555:ASP:OD2	1:A:558:SER:HB3	2.20	0.42
1:B:217:HIS:CD2	1:B:219:LEU:H	2.24	0.42
1:B:244:LYS:N	1:B:245:PRO:CD	2.83	0.41
1:B:707:TYR:HA	1:B:770:THR:HG21	2.02	0.41
1:A:161:VAL:HG11	1:A:299:PHE:CE2	2.54	0.41
1:A:140:SER:HB3	1:A:303:PHE:O	2.20	0.41
1:A:397:HIS:HA	1:A:399:GLU:OE1	2.20	0.41
1:B:575:ARG:HE	1:B:575:ARG:HB2	1.59	0.41
1:A:484:ASN:O	1:A:485:PRO:C	2.63	0.41
1:A:635:ASP:O	1:A:639:HIS:HD2	2.03	0.41
1:B:423:TRP:H	1:B:484:ASN:HD22	1.67	0.41
1:B:499:LEU:HD23	1:B:499:LEU:HA	1.86	0.41
1:B:114:GLN:HE21	1:B:414:ARG:HH12	1.68	0.41
1:B:534:LEU:HD23	1:B:534:LEU:HA	1.97	0.41
1:A:134:GLY:HA2	4:A:902:SO4:O3	2.21	0.41
1:B:103:TRP:H	1:B:357:ASN:HD21	1.69	0.41
1:B:423:TRP:H	1:B:484:ASN:ND2	2.19	0.41
1:B:604:MET:HG2	1:B:641:LEU:HD21	2.03	0.41
1:A:572:TRP:CZ2	1:A:583:SER:HA	2.55	0.40
1:A:481:HIS:H	1:A:481:HIS:CD2	2.38	0.40

Continued on next page...

Continued from previous page...

Atom-1	Atom-2	Interatomic distance (Å)	Clash overlap (Å)
1:A:555:ASP:CG	1:A:558:SER:HB3	2.47	0.40
1:B:262:LYS:HE2	1:B:262:LYS:HB2	1.74	0.40
1:A:653:TYR:CD2	1:A:677:PRO:HG2	2.57	0.40
1:B:604:MET:HE2	1:B:645:HIS:CD2	2.57	0.40

There are no symmetry-related clashes.

5.3 Torsion angles [i](#)

5.3.1 Protein backbone [i](#)

In the following table, the Percentiles column shows the percent Ramachandran outliers of the chain as a percentile score with respect to all X-ray entries followed by that with respect to entries of similar resolution.

The Analysed column shows the number of residues for which the backbone conformation was analysed, and the total number of residues.

Mol	Chain	Analysed	Favoured	Allowed	Outliers	Percentiles	
1	A	763/819 (93%)	738 (97%)	23 (3%)	2 (0%)	36	56
1	B	760/819 (93%)	737 (97%)	22 (3%)	1 (0%)	48	69
All	All	1523/1638 (93%)	1475 (97%)	45 (3%)	3 (0%)	43	64

All (3) Ramachandran outliers are listed below:

Mol	Chain	Res	Type
1	A	728	SER
1	B	728	SER
1	A	309	GLY

5.3.2 Protein sidechains [i](#)

In the following table, the Percentiles column shows the percent sidechain outliers of the chain as a percentile score with respect to all X-ray entries followed by that with respect to entries of similar resolution.

The Analysed column shows the number of residues for which the sidechain conformation was analysed, and the total number of residues.

Mol	Chain	Analysed	Rotameric	Outliers	Percentiles	
1	A	626/707 (88%)	609 (97%)	17 (3%)	39	65
1	B	632/707 (89%)	599 (95%)	33 (5%)	21	42
All	All	1258/1414 (89%)	1208 (96%)	50 (4%)	28	53

All (50) residues with a non-rotameric sidechain are listed below:

Mol	Chain	Res	Type
1	A	49	LEU
1	A	93	GLU
1	A	218	ASP
1	A	234[A]	THR
1	A	234[B]	THR
1	A	343	GLN
1	A	348	LYS
1	A	349	LYS
1	A	531	LEU
1	A	566	THR
1	A	573	ARG
1	A	624	THR
1	A	674	SER
1	A	676	PHE
1	A	692	LYS
1	A	773	ARG
1	A	807	LYS
1	B	33	GLU
1	B	34	SER
1	B	95	ASN
1	B	99	LYS
1	B	105	GLU
1	B	120	GLN
1	B	126	THR
1	B	186	GLU
1	B	194	ARG
1	B	202	LYS
1	B	227	GLN
1	B	249	GLN
1	B	262	LYS
1	B	274	VAL
1	B	283	SER
1	B	310	LYS
1	B	323	GLN
1	B	339	LYS

Continued on next page...

Continued from previous page...

Mol	Chain	Res	Type
1	B	438	ASP
1	B	449	ASN
1	B	453	GLU
1	B	496	VAL
1	B	565	SER
1	B	573	ARG
1	B	604	MET
1	B	619	SER
1	B	632	LYS
1	B	648	GLU
1	B	657	THR
1	B	676	PHE
1	B	686	ASP
1	B	770	THR
1	B	788	GLU

Sometimes sidechains can be flipped to improve hydrogen bonding and reduce clashes. All (44) such sidechains are listed below:

Mol	Chain	Res	Type
1	A	85	GLN
1	A	157	GLN
1	A	167	GLN
1	A	214	GLN
1	A	231	GLN
1	A	250	GLN
1	A	323	GLN
1	A	368	HIS
1	A	397	HIS
1	A	398	GLN
1	A	461	GLN
1	A	481	HIS
1	A	484	ASN
1	A	592	GLN
1	A	600	HIS
1	A	639	HIS
1	A	741	GLN
1	A	748	GLN
1	A	786	ASN
1	A	793	GLN
1	B	85	GLN
1	B	95	ASN
1	B	114	GLN

Continued on next page...

Continued from previous page...

Mol	Chain	Res	Type
1	B	137	HIS
1	B	167	GLN
1	B	181	ASN
1	B	217	HIS
1	B	227	GLN
1	B	231	GLN
1	B	249	GLN
1	B	250	GLN
1	B	323	GLN
1	B	357	ASN
1	B	368	HIS
1	B	461	GLN
1	B	476	GLN
1	B	481	HIS
1	B	484	ASN
1	B	544	GLN
1	B	600	HIS
1	B	664	HIS
1	B	748	GLN
1	B	786	ASN
1	B	793	GLN

5.3.3 RNA [i](#)

There are no RNA molecules in this entry.

5.4 Non-standard residues in protein, DNA, RNA chains [i](#)

There are no non-standard protein/DNA/RNA residues in this entry.

5.5 Carbohydrates [i](#)

2 monosaccharides are modelled in this entry.

In the following table, the Counts columns list the number of bonds (or angles) for which Mogul statistics could be retrieved, the number of bonds (or angles) that are observed in the model and the number of bonds (or angles) that are defined in the Chemical Component Dictionary. The Link column lists molecule types, if any, to which the group is linked. The Z score for a bond length (or angle) is the number of standard deviations the observed value is removed from the expected value. A bond length (or angle) with $|Z| > 2$ is considered an outlier worth inspection. RMSZ is the root-mean-square of all Z scores of the bond lengths (or angles).

Mol	Type	Chain	Res	Link	Bond lengths			Bond angles		
					Counts	RMSZ	# Z > 2	Counts	RMSZ	# Z > 2
2	NAG	C	1	1,2	14,14,15	0.76	0	17,19,21	2.04	5 (29%)
2	NAG	C	2	2	14,14,15	0.81	0	17,19,21	2.33	4 (23%)

In the following table, the Chirals column lists the number of chiral outliers, the number of chiral centers analysed, the number of these observed in the model and the number defined in the Chemical Component Dictionary. Similar counts are reported in the Torsion and Rings columns. '-' means no outliers of that kind were identified.

Mol	Type	Chain	Res	Link	Chirals	Torsions	Rings
2	NAG	C	1	1,2	-	3/6/23/26	0/1/1/1
2	NAG	C	2	2	-	2/6/23/26	0/1/1/1

There are no bond length outliers.

All (9) bond angle outliers are listed below:

Mol	Chain	Res	Type	Atoms	Z	Observed(°)	Ideal(°)
2	C	2	NAG	C1-O5-C5	7.45	122.17	112.19
2	C	1	NAG	O5-C1-C2	5.46	119.74	111.29
2	C	2	NAG	C4-C3-C2	3.85	116.67	111.02
2	C	1	NAG	C4-C3-C2	3.54	116.20	111.02
2	C	1	NAG	O3-C3-C2	-3.26	102.64	109.40
2	C	2	NAG	O3-C3-C4	-2.64	104.16	110.38
2	C	1	NAG	C2-N2-C7	2.23	125.89	122.90
2	C	2	NAG	C1-C2-N2	-2.05	107.19	110.43
2	C	1	NAG	C8-C7-N2	2.04	119.50	116.12

There are no chirality outliers.

All (5) torsion outliers are listed below:

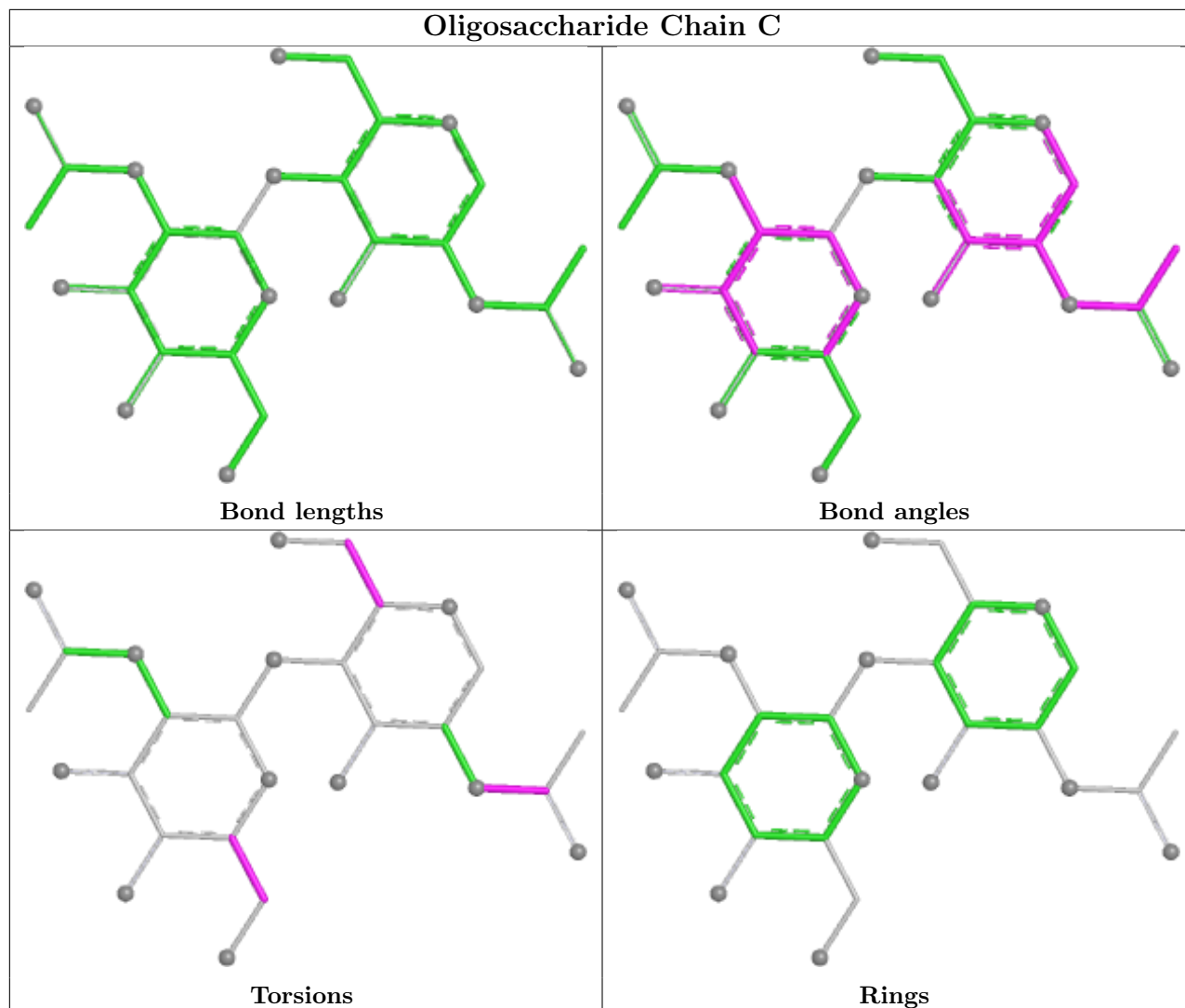
Mol	Chain	Res	Type	Atoms
2	C	2	NAG	C4-C5-C6-O6
2	C	2	NAG	O5-C5-C6-O6
2	C	1	NAG	C4-C5-C6-O6
2	C	1	NAG	C8-C7-N2-C2
2	C	1	NAG	O7-C7-N2-C2

There are no ring outliers.

No monomer is involved in short contacts.

The following is a two-dimensional graphical depiction of Mogul quality analysis of bond lengths,

bond angles, torsion angles, and ring geometry for oligosaccharide.



5.6 Ligand geometry [i](#)

15 ligands are modelled in this entry.

In the following table, the Counts columns list the number of bonds (or angles) for which Mogul statistics could be retrieved, the number of bonds (or angles) that are observed in the model and the number of bonds (or angles) that are defined in the Chemical Component Dictionary. The Link column lists molecule types, if any, to which the group is linked. The Z score for a bond length (or angle) is the number of standard deviations the observed value is removed from the expected value. A bond length (or angle) with $|Z| > 2$ is considered an outlier worth inspection. RMSZ is the root-mean-square of all Z scores of the bond lengths (or angles).

Mol	Type	Chain	Res	Link	Bond lengths			Bond angles		
					Counts	RMSZ	$\# Z > 2$	Counts	RMSZ	$\# Z > 2$
4	SO4	A	904	-	4,4,4	0.32	0	6,6,6	0.43	0
4	SO4	B	903	-	4,4,4	0.47	0	6,6,6	0.36	0

Mol	Type	Chain	Res	Link	Bond lengths			Bond angles		
					Counts	RMSZ	# Z > 2	Counts	RMSZ	# Z > 2
4	SO4	A	909	-	4,4,4	0.30	0	6,6,6	0.07	0
4	SO4	A	903	-	4,4,4	0.28	0	6,6,6	0.16	0
4	SO4	A	907	-	4,4,4	0.26	0	6,6,6	0.15	0
3	5X7	A	901	-	40,40,40	3.61	14 (35%)	52,57,57	1.79	14 (26%)
3	5X7	B	901	-	40,40,40	3.21	15 (37%)	52,57,57	1.73	10 (19%)
4	SO4	A	905	-	4,4,4	0.19	0	6,6,6	0.32	0
4	SO4	A	908	-	4,4,4	0.26	0	6,6,6	0.15	0
4	SO4	B	904	-	4,4,4	0.30	0	6,6,6	0.19	0
4	SO4	A	902	-	4,4,4	0.33	0	6,6,6	0.13	0
4	SO4	B	905	-	4,4,4	0.22	0	6,6,6	0.25	0
5	GOL	B	902	-	5,5,5	0.11	0	5,5,5	0.66	0
4	SO4	A	906	-	4,4,4	0.27	0	6,6,6	0.11	0
4	SO4	B	906	-	4,4,4	0.38	0	6,6,6	0.22	0

In the following table, the Chirals column lists the number of chiral outliers, the number of chiral centers analysed, the number of these observed in the model and the number defined in the Chemical Component Dictionary. Similar counts are reported in the Torsion and Rings columns. '-' means no outliers of that kind were identified.

Mol	Type	Chain	Res	Link	Chirals	Torsions	Rings
3	5X7	A	901	-	-	2/17/51/51	0/4/4/4
5	GOL	B	902	-	-	3/4/4/4	-
3	5X7	B	901	-	-	2/17/51/51	0/4/4/4

All (29) bond length outliers are listed below:

Mol	Chain	Res	Type	Atoms	Z	Observed(Å)	Ideal(Å)
3	A	901	5X7	C17-N4	-14.08	1.23	1.47
3	B	901	5X7	C17-N4	-10.71	1.29	1.47
3	B	901	5X7	O3-N2	10.08	1.40	1.22
3	A	901	5X7	O3-N2	8.78	1.37	1.22
3	A	901	5X7	C22-C21	-8.16	1.40	1.52
3	B	901	5X7	C17-C14	7.24	1.64	1.51
3	B	901	5X7	C9-N3	5.52	1.51	1.37
3	A	901	5X7	C17-C14	5.38	1.61	1.51
3	A	901	5X7	C21-C20	-4.30	1.41	1.52
3	A	901	5X7	O1-C2	-4.13	1.37	1.44
3	A	901	5X7	C23-N4	-4.02	1.41	1.47
3	B	901	5X7	C23-C22	3.83	1.57	1.52
3	A	901	5X7	C9-N3	3.50	1.46	1.37
3	B	901	5X7	C6-N1	3.47	1.48	1.38

Continued on next page...

Continued from previous page...

Mol	Chain	Res	Type	Atoms	Z	Observed(Å)	Ideal(Å)
3	B	901	5X7	C22-C21	-3.35	1.47	1.52
3	A	901	5X7	C6-N1	3.13	1.47	1.38
3	A	901	5X7	C19-C18	-2.90	1.47	1.52
3	A	901	5X7	C18-N4	-2.77	1.42	1.48
3	A	901	5X7	C24-C9	-2.77	1.35	1.39
3	B	901	5X7	O6-C21	2.67	1.49	1.43
3	B	901	5X7	C21-C20	-2.56	1.45	1.52
3	B	901	5X7	C1-C2	2.44	1.60	1.51
3	B	901	5X7	C5-N1	2.41	1.51	1.46
3	B	901	5X7	C10-C11	2.37	1.56	1.51
3	B	901	5X7	C16-C15	2.30	1.42	1.38
3	A	901	5X7	C7-C6	-2.28	1.35	1.39
3	B	901	5X7	C26-N1	2.24	1.50	1.46
3	B	901	5X7	O1-C3	-2.21	1.40	1.44
3	A	901	5X7	O5-C20	-2.04	1.37	1.43

All (24) bond angle outliers are listed below:

Mol	Chain	Res	Type	Atoms	Z	Observed(°)	Ideal(°)
3	B	901	5X7	C26-N1-C6	5.06	126.90	116.42
3	B	901	5X7	C3-O1-C2	4.81	119.25	112.12
3	A	901	5X7	O5-C20-C21	-3.92	101.14	110.38
3	A	901	5X7	C7-C6-N1	-3.83	117.19	121.33
3	B	901	5X7	C19-C18-C20	-3.44	107.75	112.93
3	A	901	5X7	C23-C22-C21	-3.44	106.08	110.17
3	B	901	5X7	O6-C21-C20	-3.16	102.92	110.38
3	B	901	5X7	C4-C3-C5	-3.12	104.54	112.39
3	A	901	5X7	C17-N4-C23	3.07	116.44	110.33
3	A	901	5X7	C5-N1-C6	2.83	122.30	116.42
3	A	901	5X7	C7-C8-C9	-2.81	118.98	121.55
3	B	901	5X7	C24-C9-N3	-2.73	117.25	121.75
3	B	901	5X7	C17-N4-C23	2.69	115.69	110.33
3	A	901	5X7	C26-N1-C6	2.66	121.93	116.42
3	A	901	5X7	O4-C19-C18	-2.65	105.68	111.55
3	A	901	5X7	C8-C9-N3	-2.63	118.87	123.38
3	A	901	5X7	C10-C11-C16	-2.47	115.89	120.94
3	A	901	5X7	C13-C12-C11	-2.47	117.76	121.00
3	A	901	5X7	C17-N4-C18	2.45	117.83	112.94
3	A	901	5X7	O5-C20-C18	-2.42	105.42	109.87
3	B	901	5X7	O1-C3-C4	2.39	111.36	106.88
3	B	901	5X7	O3-N2-C8	-2.28	115.12	119.03
3	B	901	5X7	C7-C6-N1	-2.18	118.97	121.33

Continued on next page...

Continued from previous page...

Mol	Chain	Res	Type	Atoms	Z	Observed(°)	Ideal(°)
3	A	901	5X7	C19-C18-C20	-2.16	109.68	112.93

There are no chirality outliers.

All (7) torsion outliers are listed below:

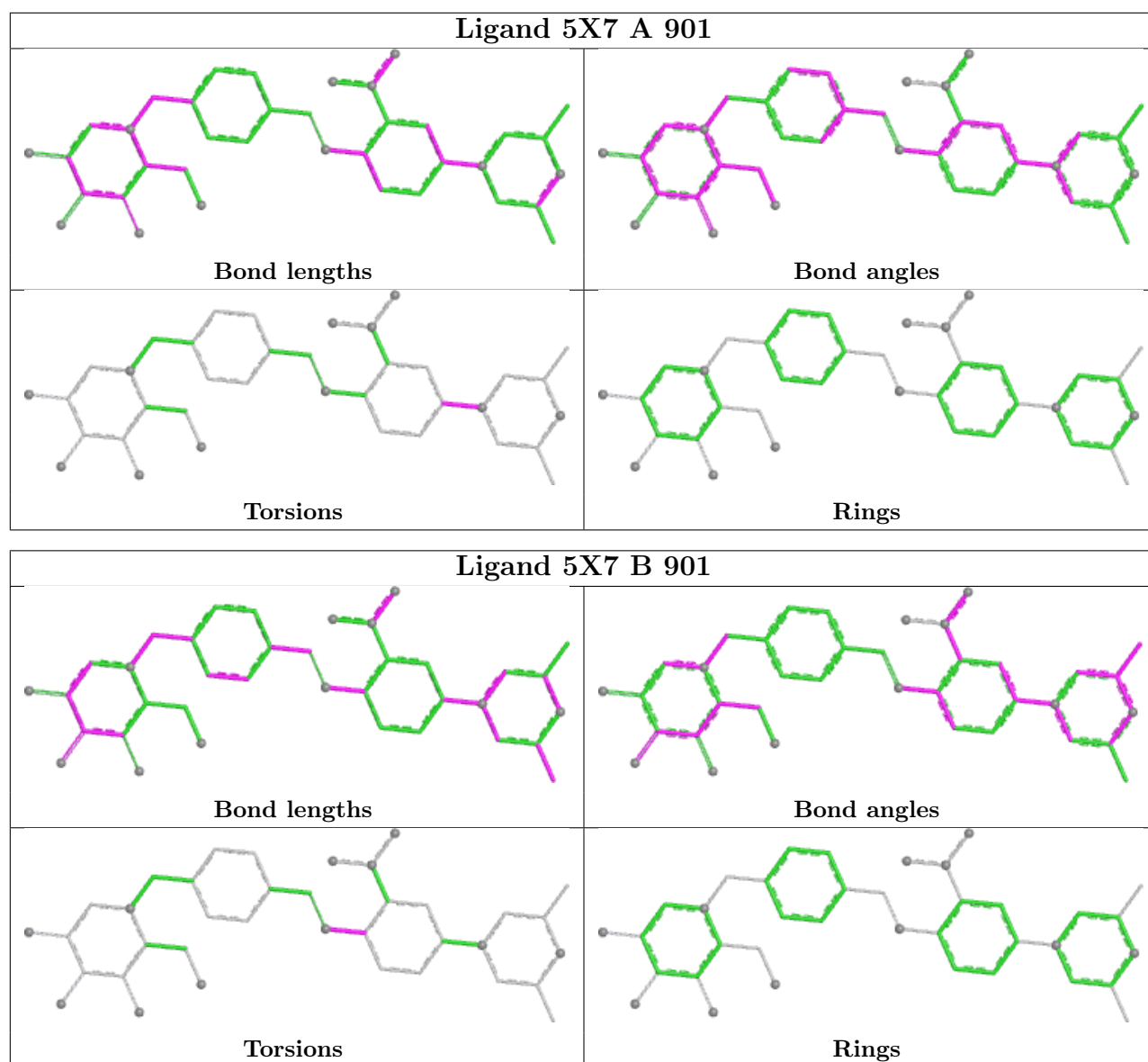
Mol	Chain	Res	Type	Atoms
3	B	901	5X7	C8-C9-N3-C10
5	B	902	GOL	O1-C1-C2-C3
3	B	901	5X7	C24-C9-N3-C10
5	B	902	GOL	O1-C1-C2-O2
5	B	902	GOL	O2-C2-C3-O3
3	A	901	5X7	C7-C6-N1-C5
3	A	901	5X7	C25-C6-N1-C5

There are no ring outliers.

3 monomers are involved in 3 short contacts:

Mol	Chain	Res	Type	Clashes	Symm-Clashes
4	B	903	SO4	1	0
3	B	901	5X7	1	0
4	A	902	SO4	1	0

The following is a two-dimensional graphical depiction of Mogul quality analysis of bond lengths, bond angles, torsion angles, and ring geometry for all instances of the Ligand of Interest. In addition, ligands with molecular weight > 250 and outliers as shown on the validation Tables will also be included. For torsion angles, if less than 5% of the Mogul distribution of torsion angles is within 10 degrees of the torsion angle in question, then that torsion angle is considered an outlier. Any bond that is central to one or more torsion angles identified as an outlier by Mogul will be highlighted in the graph. For rings, the root-mean-square deviation (RMSD) between the ring in question and similar rings identified by Mogul is calculated over all ring torsion angles. If the average RMSD is greater than 60 degrees and the minimal RMSD between the ring in question and any Mogul-identified rings is also greater than 60 degrees, then that ring is considered an outlier. The outliers are highlighted in purple. The color gray indicates Mogul did not find sufficient equivalents in the CSD to analyse the geometry.



5.7 Other polymers [\(i\)](#)

There are no such residues in this entry.

5.8 Polymer linkage issues [\(i\)](#)

There are no chain breaks in this entry.

6 Fit of model and data [i](#)

6.1 Protein, DNA and RNA chains [i](#)

In the following table, the column labelled ‘#RSRZ > 2’ contains the number (and percentage) of RSRZ outliers, followed by percent RSRZ outliers for the chain as percentile scores relative to all X-ray entries and entries of similar resolution. The OWAB column contains the minimum, median, 95th percentile and maximum values of the occupancy-weighted average B-factor per residue. The column labelled ‘Q < 0.9’ lists the number of (and percentage) of residues with an average occupancy less than 0.9.

Mol	Chain	Analysed	<RSRZ>	#RSRZ>2	OWAB(Å ²)	Q<0.9
1	A	765/819 (93%)	-0.60	2 (0%) 90 88	24, 52, 79, 105	2 (0%)
1	B	764/819 (93%)	-0.70	2 (0%) 90 88	29, 49, 77, 97	0
All	All	1529/1638 (93%)	-0.65	4 (0%) 90 88	24, 50, 78, 105	2 (0%)

All (4) RSRZ outliers are listed below:

Mol	Chain	Res	Type	RSRZ
1	A	36	LEU	4.2
1	B	812	HIS	3.8
1	B	518	THR	2.9
1	A	660	GLU	2.1

6.2 Non-standard residues in protein, DNA, RNA chains [i](#)

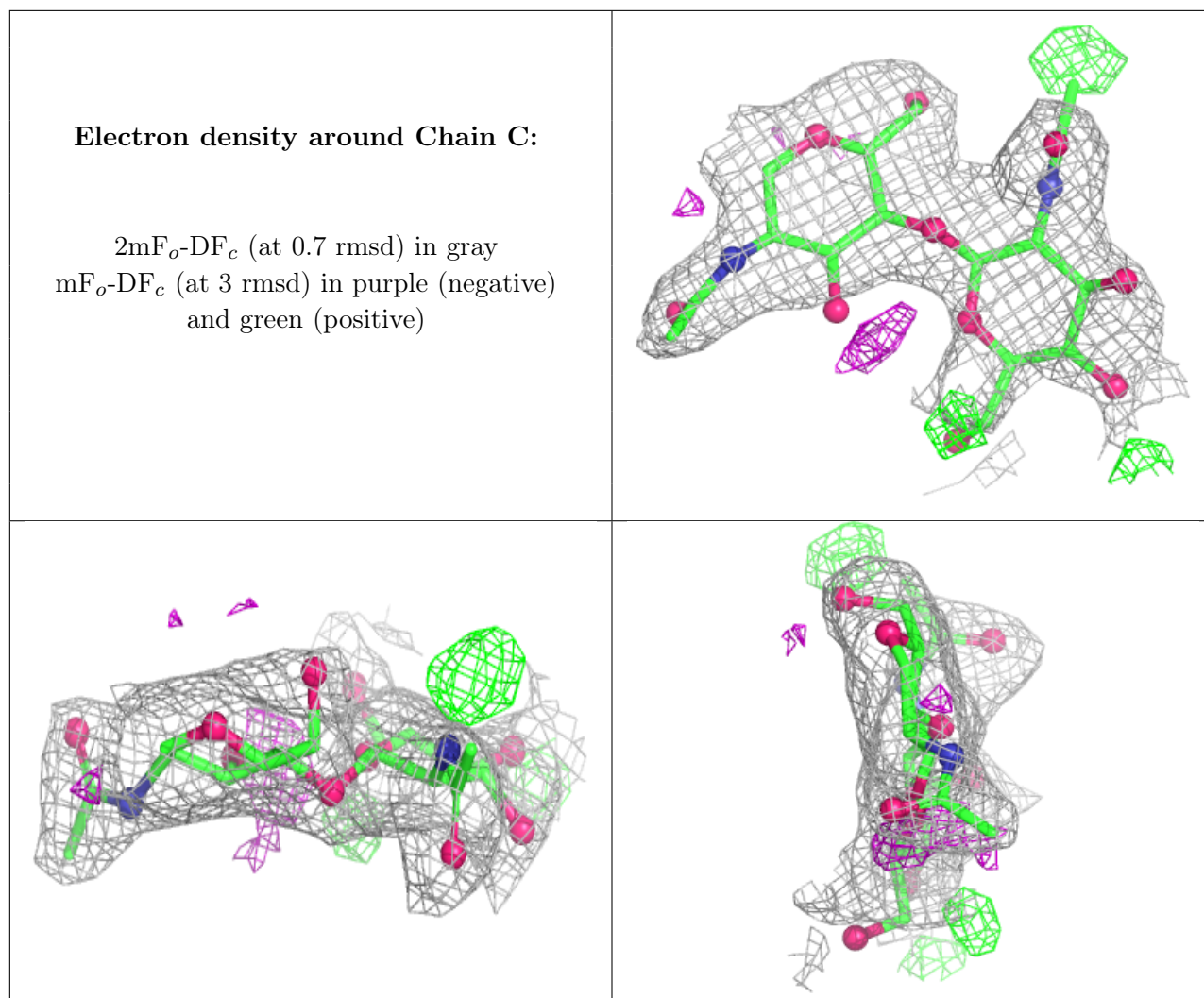
There are no non-standard protein/DNA/RNA residues in this entry.

6.3 Carbohydrates [i](#)

In the following table, the Atoms column lists the number of modelled atoms in the group and the number defined in the chemical component dictionary. The B-factors column lists the minimum, median, 95th percentile and maximum values of B factors of atoms in the group. The column labelled ‘Q < 0.9’ lists the number of atoms with occupancy less than 0.9.

Mol	Type	Chain	Res	Atoms	RSCC	RSR	B-factors(Å ²)	Q<0.9
2	NAG	C	2	14/15	0.48	0.15	78,114,131,134	0
2	NAG	C	1	14/15	0.87	0.11	53,81,99,113	0

The following is a graphical depiction of the model fit to experimental electron density for oligosaccharide. Each fit is shown from different orientation to approximate a three-dimensional view.



6.4 Ligands [i](#)

In the following table, the Atoms column lists the number of modelled atoms in the group and the number defined in the chemical component dictionary. The B-factors column lists the minimum, median, 95th percentile and maximum values of B factors of atoms in the group. The column labelled 'Q< 0.9' lists the number of atoms with occupancy less than 0.9.

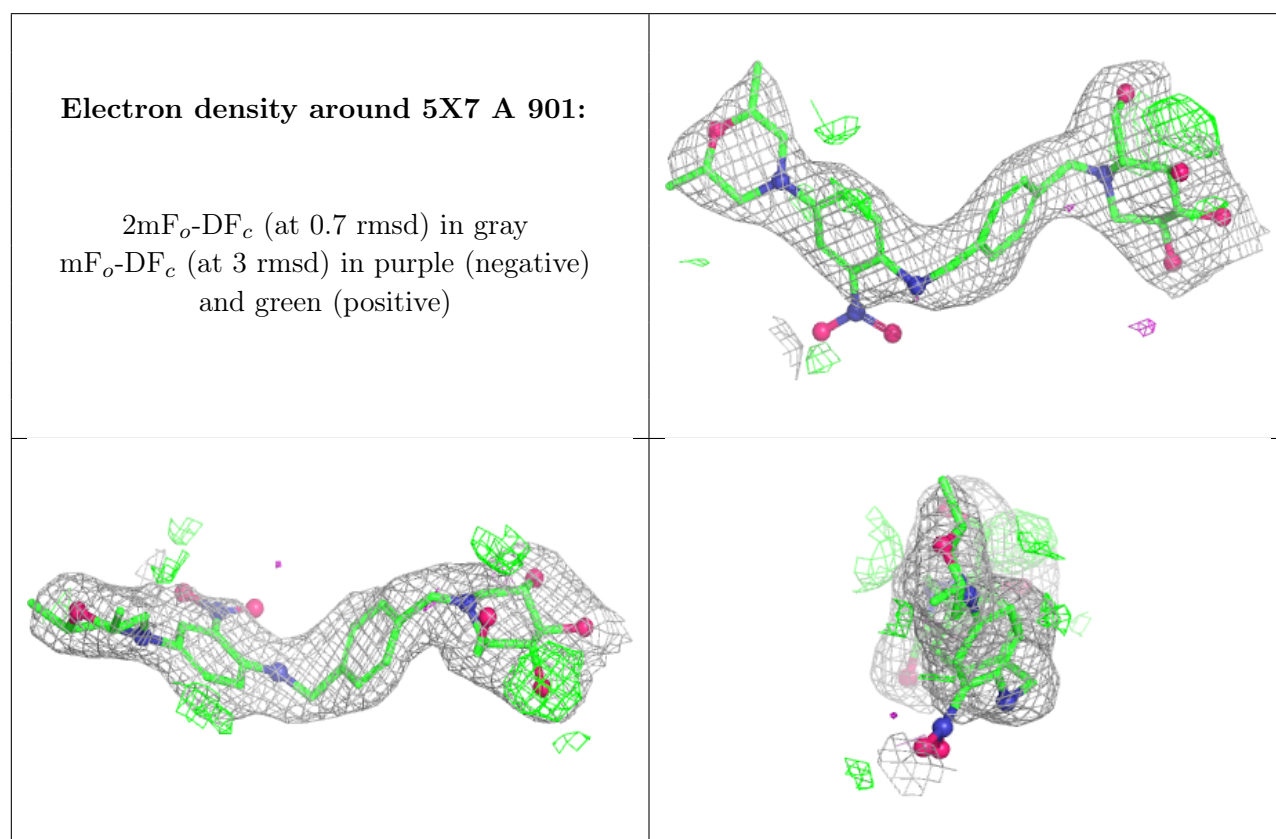
Mol	Type	Chain	Res	Atoms	RSCC	RSR	B-factors(Å ²)	Q<0.9
4	SO4	A	902	5/5	0.69	0.07	124,133,136,138	0
4	SO4	A	906	5/5	0.80	0.08	88,106,117,121	0
4	SO4	A	907	5/5	0.83	0.09	100,107,112,125	0
4	SO4	B	904	5/5	0.84	0.07	84,92,103,110	0
4	SO4	A	908	5/5	0.86	0.10	83,97,105,106	0
4	SO4	A	909	5/5	0.88	0.06	92,120,125,131	0
4	SO4	A	905	5/5	0.90	0.14	82,89,121,133	0
3	5X7	A	901	37/37	0.91	0.14	35,56,140,182	0
4	SO4	B	905	5/5	0.94	0.09	68,72,83,92	0

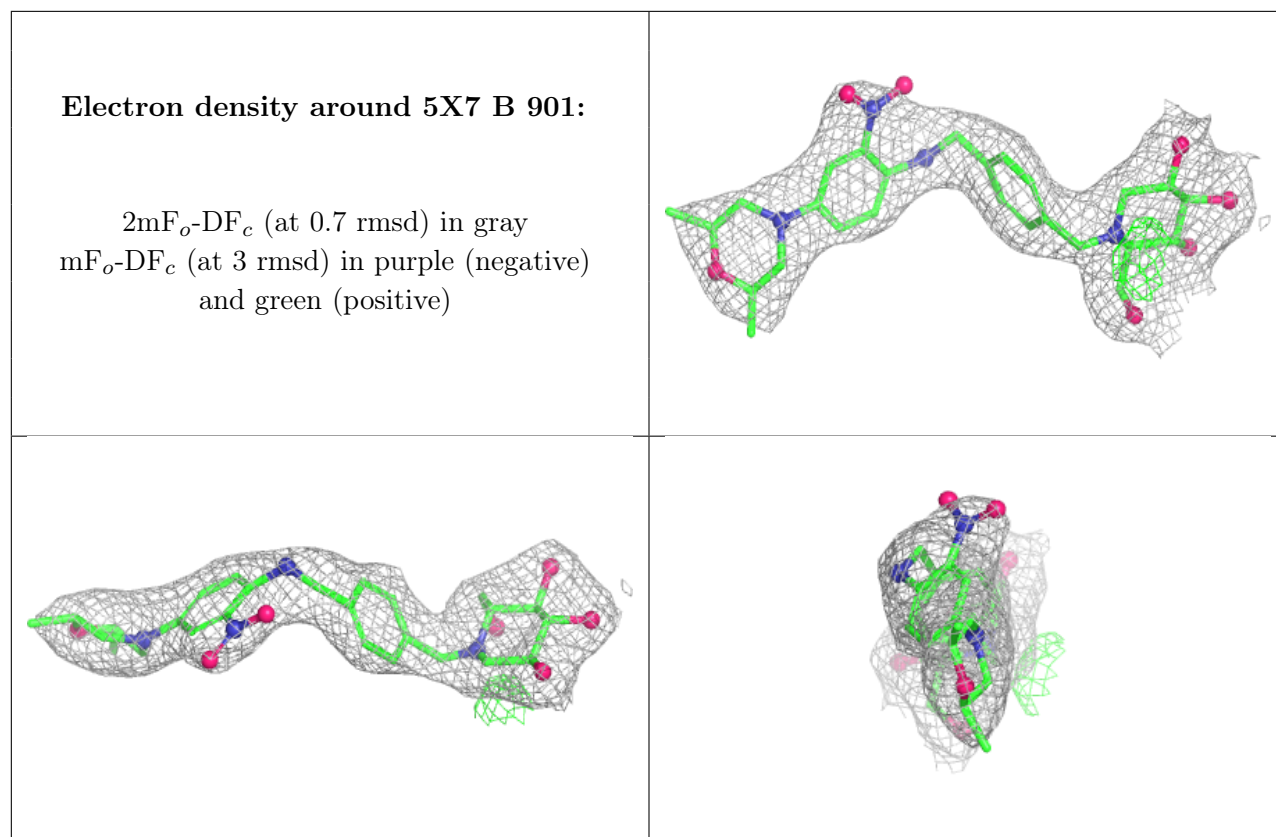
Continued on next page...

Continued from previous page...

Mol	Type	Chain	Res	Atoms	RSCC	RSR	B-factors(\AA^2)	Q<0.9
4	SO4	B	906	5/5	0.95	0.08	56,75,79,84	0
3	5X7	B	901	37/37	0.96	0.09	36,62,87,100	0
4	SO4	A	903	5/5	0.96	0.07	81,81,83,92	0
5	GOL	B	902	6/6	0.96	0.12	46,59,63,71	0
4	SO4	A	904	5/5	0.98	0.04	49,51,53,59	0
4	SO4	B	903	5/5	0.98	0.05	45,50,55,77	0

The following is a graphical depiction of the model fit to experimental electron density of all instances of the Ligand of Interest. In addition, ligands with molecular weight > 250 and outliers as shown on the geometry validation Tables will also be included. Each fit is shown from different orientation to approximate a three-dimensional view.





6.5 Other polymers [i](#)

There are no such residues in this entry.