



Full wwPDB X-ray Structure Validation Report ⓘ

Mar 7, 2026 – 12:28 AM UTC

PDB ID : 4REF / pdb_00004ref
Title : Crystal Structure of TR3 LBD_L449W in complex with Molecule 2
Authors : Li, F.W.; Cai, Q.X.; Li, A.Z.; Tian, X.Y.; Wang, W.J.; Yuan, W.; Hou, P.P.;
Wu, Q.; Lin, T.W.
Deposited on : 2014-09-22
Resolution : 2.10 Å(reported)

This is a Full wwPDB X-ray Structure Validation Report for a publicly released PDB entry.

We welcome your comments at validation@mail.wwpdb.org

A user guide is available at

<https://www.wwpdb.org/validation/2017/XrayValidationReportHelp>

with specific help available everywhere you see the ⓘ symbol.

The types of validation reports are described at

<http://www.wwpdb.org/validation/2017/FAQs#types>.

The following versions of software and data (see [references ⓘ](#)) were used in the production of this report:

MolProbity : 4-5-2 with Phenix2.0
Mogul : 2022.3.0, CSD as543be (2022)
Xtriage (Phenix) : 2.0
EDS : 3.0
Percentile statistics : 20250101.v01 (using entries in the PDB archive January 1st 2025)
CCP4 : 9.0.010 (Gargrove)
Density-Fitness : 1.0.12
Ideal geometry (proteins) : Engh & Huber (2001)
Ideal geometry (DNA, RNA) : Parkinson et al. (1996)
Validation Pipeline (wwPDB-VP) : 2.49

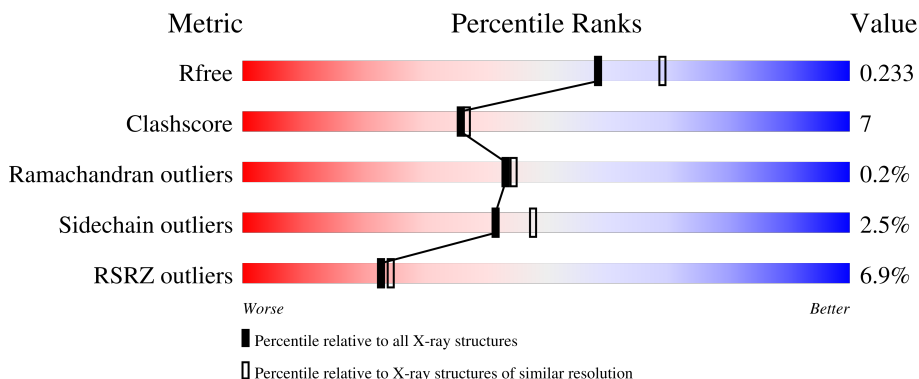
1 Overall quality at a glance

The following experimental techniques were used to determine the structure:

X-RAY DIFFRACTION

The reported resolution of this entry is 2.10 Å.

Percentile scores (ranging between 0-100) for global validation metrics of the entry are shown in the following graphic. The table shows the number of entries on which the scores are based.



Metric	Whole archive (#Entries)	Similar resolution (#Entries, resolution range(Å))
R_{free}	180053	6658 (2.10-2.10)
Clashscore	190562	7164 (2.10-2.10)
Ramachandran outliers	187476	7099 (2.10-2.10)
Sidechain outliers	187428	7100 (2.10-2.10)
RSRZ outliers	180081	6662 (2.10-2.10)

The table below summarises the geometric issues observed across the polymeric chains and their fit to the electron density. The red, orange, yellow and green segments of the lower bar indicate the fraction of residues that contain outliers for ≥ 3 , 2, 1 and 0 types of geometric quality criteria respectively. A grey segment represents the fraction of residues that are not modelled. The numeric value for each fraction is indicated below the corresponding segment, with a dot representing fractions $\leq 5\%$. The upper red bar (where present) indicates the fraction of residues that have poor fit to the electron density. The numeric value is given above the bar.

Mol	Chain	Length	Quality of chain
1	A	256	 6% 79% 10% • 10%
1	B	256	 6% 77% 12% • 8%

The following table lists non-polymeric compounds, carbohydrate monomers and non-standard residues in protein, DNA, RNA chains that are outliers for geometric or electron-density-fit criteria:

Mol	Type	Chain	Res	Chirality	Geometry	Clashes	Electron density
2	GOL	A	303	-	X	-	-

2 Entry composition

There are 4 unique types of molecules in this entry. The entry contains 4004 atoms, of which 0 are hydrogens and 0 are deuteriums.

In the tables below, the ZeroOcc column contains the number of atoms modelled with zero occupancy, the AltConf column contains the number of residues with at least one atom in alternate conformation and the Trace column contains the number of residues modelled with at most 2 atoms.

- Molecule 1 is a protein called Nuclear receptor subfamily 4 group A member 1.

Mol	Chain	Residues	Atoms					ZeroOcc	AltConf	Trace
			Total	C	N	O	S			
1	B	235	1827	1180	311	329	7	0	0	0
1	A	231	1822	1180	310	325	7	0	0	0

There are 18 discrepancies between the modelled and reference sequences:

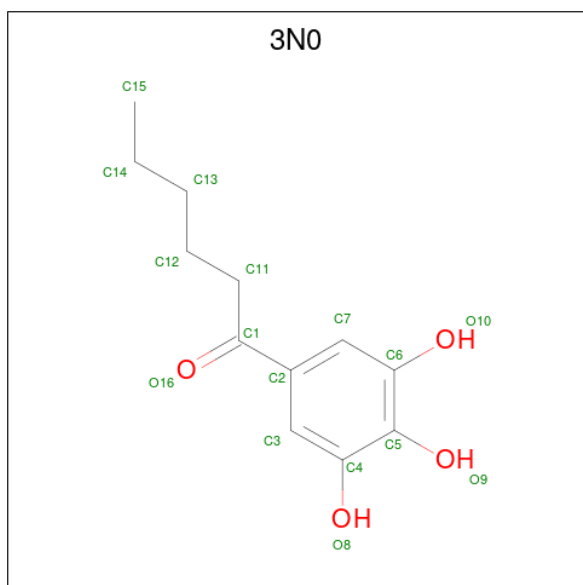
Chain	Residue	Modelled	Actual	Comment	Reference
B	118	TRP	LEU	engineered mutation	UNP P22736
B	268	LEU	-	expression tag	UNP P22736
B	269	GLU	-	expression tag	UNP P22736
B	270	HIS	-	expression tag	UNP P22736
B	271	HIS	-	expression tag	UNP P22736
B	272	HIS	-	expression tag	UNP P22736
B	273	HIS	-	expression tag	UNP P22736
B	274	HIS	-	expression tag	UNP P22736
B	275	HIS	-	expression tag	UNP P22736
A	118	TRP	LEU	engineered mutation	UNP P22736
A	268	LEU	-	expression tag	UNP P22736
A	269	GLU	-	expression tag	UNP P22736
A	270	HIS	-	expression tag	UNP P22736
A	271	HIS	-	expression tag	UNP P22736
A	272	HIS	-	expression tag	UNP P22736
A	273	HIS	-	expression tag	UNP P22736
A	274	HIS	-	expression tag	UNP P22736
A	275	HIS	-	expression tag	UNP P22736

- Molecule 2 is GLYCEROL (CCD ID: GOL) (formula: C₃H₈O₃).



Mol	Chain	Residues	Atoms		ZeroOcc	AltConf
2	B	1	Total	C O	0	0
			6	3 3		
2	A	1	Total	C O	0	0
			6	3 3		
2	A	1	Total	C O	0	0
			6	3 3		
2	A	1	Total	C O	0	0
			6	3 3		

- Molecule 3 is 1-(3,4,5-trihydroxyphenyl)hexan-1-one (CCD ID: 3N0) (formula: $C_{12}H_{16}O_4$).



Mol	Chain	Residues	Atoms			ZeroOcc	AltConf
3	A	1	Total	C	O	0	0
			16	12	4		

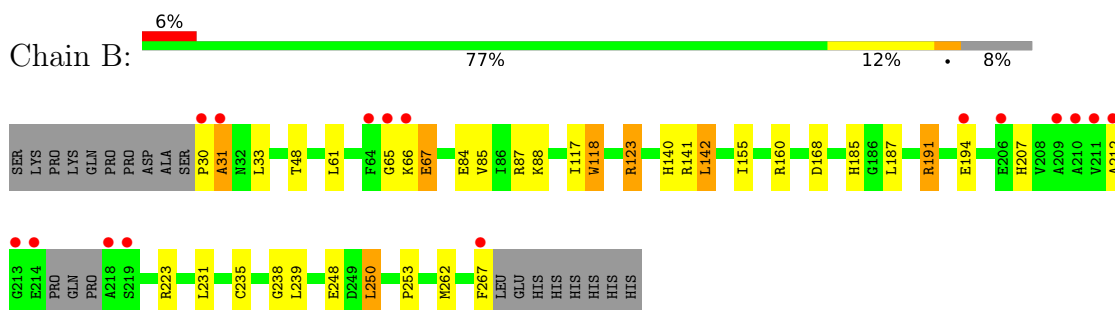
- Molecule 4 is water.

Mol	Chain	Residues	Atoms		ZeroOcc	AltConf
4	B	158	Total	O	0	0
			158	158		
4	A	157	Total	O	0	0
			157	157		

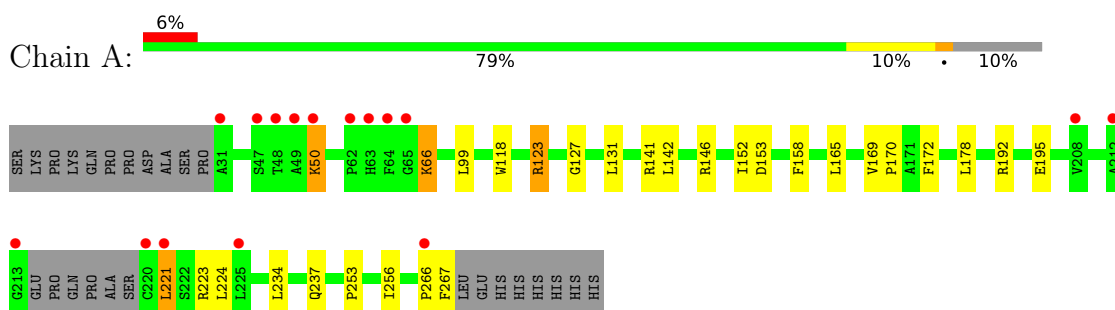
3 Residue-property plots [i](#)

These plots are drawn for all protein, RNA, DNA and oligosaccharide chains in the entry. The first graphic for a chain summarises the proportions of the various outlier classes displayed in the second graphic. The second graphic shows the sequence view annotated by issues in geometry and electron density. Residues are color-coded according to the number of geometric quality criteria for which they contain at least one outlier: green = 0, yellow = 1, orange = 2 and red = 3 or more. A red dot above a residue indicates a poor fit to the electron density ($RSRZ > 2$). Stretches of 2 or more consecutive residues without any outlier are shown as a green connector. Residues present in the sample, but not in the model, are shown in grey.

- Molecule 1: Nuclear receptor subfamily 4 group A member 1



- Molecule 1: Nuclear receptor subfamily 4 group A member 1



4 Data and refinement statistics i

Property	Value	Source
Space group	P 21 21 21	Depositor
Cell constants a, b, c, α , β , γ	74.20Å 76.84Å 128.08Å 90.00° 90.00° 90.00°	Depositor
Resolution (Å)	37.03 – 2.10 37.03 – 2.10	Depositor EDS
% Data completeness (in resolution range)	98.8 (37.03-2.10) 98.8 (37.03-2.10)	Depositor EDS
R_{merge}	0.06	Depositor
R_{sym}	(Not available)	Depositor
$\langle I/\sigma(I) \rangle$ ¹	3.64 (at 2.10Å)	Xtrriage
Refinement program	REFMAC 5.7.0032	Depositor
R, R_{free}	0.187 , 0.230 0.195 , 0.233	Depositor DCC
R_{free} test set	2153 reflections (4.96%)	wwPDB-VP
Wilson B-factor (Å ²)	30.3	Xtrriage
Anisotropy	0.311	Xtrriage
Bulk solvent k_{sol} (e/Å ³), B_{sol} (Å ²)	0.35 , 47.0	EDS
L-test for twinning ²	$\langle L \rangle = 0.48$, $\langle L^2 \rangle = 0.32$	Xtrriage
Estimated twinning fraction	0.034 for k,h,-l	Xtrriage
F_o, F_c correlation	0.95	EDS
Total number of atoms	4004	wwPDB-VP
Average B, all atoms (Å ²)	37.0	wwPDB-VP

Xtrriage's analysis on translational NCS is as follows: *The largest off-origin peak in the Patterson function is 4.89% of the height of the origin peak. No significant pseudotranslation is detected.*

¹Intensities estimated from amplitudes.

²Theoretical values of $\langle |L| \rangle$, $\langle L^2 \rangle$ for acentric reflections are 0.5, 0.333 respectively for untwinned datasets, and 0.375, 0.2 for perfectly twinned datasets.

5 Model quality [i](#)

5.1 Standard geometry [i](#)

Bond lengths and bond angles in the following residue types are not validated in this section: GOL, 3N0

The Z score for a bond length (or angle) is the number of standard deviations the observed value is removed from the expected value. A bond length (or angle) with $|Z| > 5$ is considered an outlier worth inspection. RMSZ is the root-mean-square of all Z scores of the bond lengths (or angles).

Mol	Chain	Bond lengths		Bond angles	
		RMSZ	# Z >5	RMSZ	# Z >5
1	A	1.35	3/1862 (0.2%)	1.14	5/2522 (0.2%)
1	B	1.35	7/1867 (0.4%)	1.17	10/2532 (0.4%)
All	All	1.35	10/3729 (0.3%)	1.16	15/5054 (0.3%)

All (10) bond length outliers are listed below:

Mol	Chain	Res	Type	Atoms	Z	Observed(Å)	Ideal(Å)
1	B	123	ARG	CD-NE	-7.39	1.35	1.46
1	A	142	LEU	C-O	-7.25	1.15	1.24
1	A	123	ARG	CD-NE	-6.91	1.36	1.46
1	B	253	PRO	C-O	-6.44	1.19	1.24
1	B	118	TRP	C-O	-6.14	1.17	1.24
1	B	239	LEU	CA-C	5.88	1.60	1.52
1	A	253	PRO	C-O	-5.82	1.19	1.24
1	B	66	LYS	N-CA	5.14	1.52	1.46
1	B	238	GLY	C-O	-5.11	1.17	1.23
1	B	187	LEU	C-O	-5.06	1.17	1.23

All (15) bond angle outliers are listed below:

Mol	Chain	Res	Type	Atoms	Z	Observed(°)	Ideal(°)
1	B	123	ARG	NE-CZ-NH2	-12.58	107.88	119.20
1	A	123	ARG	NE-CZ-NH2	-11.65	108.72	119.20
1	B	123	ARG	NE-CZ-NH1	8.54	130.04	121.50
1	A	123	ARG	NE-CZ-NH1	7.85	129.35	121.50
1	B	123	ARG	CD-NE-CZ	7.55	134.97	124.40
1	A	123	ARG	CD-NE-CZ	7.05	134.27	124.40
1	B	61	LEU	CA-C-N	-6.20	113.37	119.76
1	B	61	LEU	C-N-CA	-6.20	113.37	119.76
1	A	192	ARG	NE-CZ-NH2	6.04	124.64	119.20

Continued on next page...

Continued from previous page...

Mol	Chain	Res	Type	Atoms	Z	Observed(°)	Ideal(°)
1	B	235	CYS	N-CA-C	5.91	120.10	113.01
1	B	65	GLY	N-CA-C	5.90	127.15	113.18
1	A	99	LEU	N-CA-C	-5.75	102.94	110.53
1	B	67	GLU	N-CA-CB	5.63	118.21	109.48
1	B	168	ASP	CA-C-N	5.29	123.57	120.24
1	B	168	ASP	C-N-CA	5.29	123.57	120.24

There are no chirality outliers.

There are no planarity outliers.

5.2 Too-close contacts [i](#)

In the following table, the Non-H and H(model) columns list the number of non-hydrogen atoms and hydrogen atoms in the chain respectively. The H(added) column lists the number of hydrogen atoms added and optimized by MolProbity. The Clashes column lists the number of clashes within the asymmetric unit, whereas Symm-Clashes lists symmetry-related clashes.

Mol	Chain	Non-H	H(model)	H(added)	Clashes	Symm-Clashes
1	A	1822	0	1863	33	0
1	B	1827	0	1845	21	0
2	A	18	0	24	3	0
2	B	6	0	8	2	0
3	A	16	0	15	1	0
4	A	157	0	0	6	0
4	B	158	0	0	9	0
All	All	4004	0	3755	54	0

The all-atom clashscore is defined as the number of clashes found per 1000 atoms (including hydrogen atoms). The all-atom clashscore for this structure is 7.

All (54) close contacts within the same asymmetric unit are listed below, sorted by their clash magnitude.

Atom-1	Atom-2	Interatomic distance (Å)	Clash overlap (Å)
1:B:191:ARG:NH2	1:B:194:GLU:OE1	1.80	1.13
1:B:87:ARG:NH1	4:B:449:HOH:O	1.90	1.03
1:A:50:LYS:O	1:A:50:LYS:NZ	2.02	0.93
1:A:221:LEU:HD11	1:A:223:ARG:HB2	1.52	0.91
1:A:221:LEU:CD1	1:A:223:ARG:HB2	2.01	0.90
1:B:191:ARG:HH21	1:B:194:GLU:CD	1.90	0.80
1:B:30:PRO:HB2	1:B:31:ALA:CA	2.13	0.78

Continued on next page...

Continued from previous page...

Atom-1	Atom-2	Interatomic distance (Å)	Clash overlap (Å)
1:A:221:LEU:HD12	1:A:224:LEU:H	1.47	0.78
1:B:84:GLU:OE2	1:B:88:LYS:NZ	2.18	0.77
1:B:207:HIS:HD2	4:B:429:HOH:O	1.68	0.75
1:B:262:MET:HE3	4:B:458:HOH:O	1.90	0.70
1:A:221:LEU:HD12	1:A:223:ARG:N	2.07	0.70
1:B:262:MET:CE	4:B:458:HOH:O	2.40	0.68
1:B:212:ALA:HA	4:B:547:HOH:O	1.94	0.68
1:B:191:ARG:HA	1:B:194:GLU:HG2	1.77	0.66
1:B:248:GLU:HG2	1:B:250:LEU:HD13	1.78	0.65
1:B:123:ARG:HD3	2:B:301:GOL:O2	1.97	0.64
1:A:256:ILE:HG23	4:A:459:HOH:O	1.99	0.63
1:A:127:GLY:H	2:A:303:GOL:H31	1.66	0.61
1:B:85:VAL:HG23	4:B:453:HOH:O	2.02	0.58
1:A:123:ARG:HD3	2:A:301:GOL:O2	2.04	0.57
1:A:127:GLY:N	2:A:303:GOL:H31	2.23	0.54
1:A:221:LEU:HD11	4:A:436:HOH:O	2.07	0.54
1:A:66:LYS:HD2	1:A:146:ARG:HH22	1.73	0.53
1:B:141:ARG:NH2	1:B:142:LEU:HD11	2.24	0.53
1:A:66:LYS:HD2	1:A:146:ARG:NH2	2.24	0.52
1:A:66:LYS:HG3	1:A:146:ARG:NH1	2.25	0.51
1:A:221:LEU:CD1	1:A:224:LEU:H	2.19	0.51
1:A:237:GLN:HG2	4:A:553:HOH:O	2.11	0.51
1:B:30:PRO:N	1:B:33:LEU:H	2.07	0.51
1:A:221:LEU:CD1	1:A:223:ARG:N	2.74	0.51
1:A:141:ARG:HD2	1:A:153:ASP:OD1	2.12	0.50
1:A:221:LEU:CD1	1:A:221:LEU:C	2.85	0.50
1:A:221:LEU:CD1	1:A:223:ARG:H	2.25	0.50
1:A:221:LEU:HD12	1:A:224:LEU:N	2.23	0.49
1:A:221:LEU:CD1	1:A:223:ARG:CB	2.85	0.48
1:A:178:LEU:HB3	3:A:302:3N0:H1	1.96	0.47
1:A:131:LEU:HG	1:A:152:ILE:HD11	1.98	0.46
1:B:185:HIS:HD2	4:B:502:HOH:O	1.99	0.45
1:A:195:GLU:OE1	4:A:490:HOH:O	2.21	0.45
1:B:160:ARG:NH1	4:B:430:HOH:O	2.50	0.45
1:A:165:LEU:HD22	4:A:436:HOH:O	2.17	0.44
1:A:158:PHE:HB2	1:A:234:LEU:HD11	1.99	0.44
1:A:221:LEU:HD21	4:A:536:HOH:O	2.17	0.44
1:A:266:PRO:O	1:A:267:PHE:HB3	2.17	0.44
1:A:66:LYS:HG3	1:A:146:ARG:HH12	1.82	0.43
1:B:123:ARG:CD	2:B:301:GOL:O2	2.67	0.43
1:A:221:LEU:C	1:A:221:LEU:HD13	2.43	0.43

Continued on next page...

Continued from previous page...

Atom-1	Atom-2	Interatomic distance (Å)	Clash overlap (Å)
1:B:118:TRP:HB2	1:B:231:LEU:HD21	2.01	0.42
1:A:118:TRP:CE2	1:A:172:PHE:CE1	3.08	0.42
1:B:267:PHE:C	4:B:541:HOH:O	2.64	0.41
1:A:169:VAL:HB	1:A:170:PRO:HD3	2.03	0.41
1:B:117:ILE:HD12	1:B:155:ILE:CD1	2.52	0.40
1:A:66:LYS:CG	1:A:146:ARG:HH12	2.34	0.40

There are no symmetry-related clashes.

5.3 Torsion angles [i](#)

5.3.1 Protein backbone [i](#)

In the following table, the Percentiles column shows the percent Ramachandran outliers of the chain as a percentile score with respect to all X-ray entries followed by that with respect to entries of similar resolution.

The Analysed column shows the number of residues for which the backbone conformation was analysed, and the total number of residues.

Mol	Chain	Analysed	Favoured	Allowed	Outliers	Percentiles	
1	A	227/256 (89%)	223 (98%)	4 (2%)	0	100	100
1	B	231/256 (90%)	226 (98%)	4 (2%)	1 (0%)	30	28
All	All	458/512 (90%)	449 (98%)	8 (2%)	1 (0%)	43	44

All (1) Ramachandran outliers are listed below:

Mol	Chain	Res	Type
1	B	31	ALA

5.3.2 Protein sidechains [i](#)

In the following table, the Percentiles column shows the percent sidechain outliers of the chain as a percentile score with respect to all X-ray entries followed by that with respect to entries of similar resolution.

The Analysed column shows the number of residues for which the sidechain conformation was analysed, and the total number of residues.

Mol	Chain	Analysed	Rotameric	Outliers	Percentiles
1	A	199/222 (90%)	196 (98%)	3 (2%)	57 65
1	B	197/222 (89%)	190 (96%)	7 (4%)	31 34
All	All	396/444 (89%)	386 (98%)	10 (2%)	42 48

All (10) residues with a non-rotameric sidechain are listed below:

Mol	Chain	Res	Type
1	B	48	THR
1	B	67	GLU
1	B	140	HIS
1	B	142	LEU
1	B	191	ARG
1	B	223	ARG
1	B	250	LEU
1	A	50	LYS
1	A	66	LYS
1	A	221	LEU

Sometimes sidechains can be flipped to improve hydrogen bonding and reduce clashes. All (4) such sidechains are listed below:

Mol	Chain	Res	Type
1	B	163	HIS
1	B	237	GLN
1	A	163	HIS
1	A	185	HIS

5.3.3 RNA [i](#)

There are no RNA molecules in this entry.

5.4 Non-standard residues in protein, DNA, RNA chains [i](#)

There are no non-standard protein/DNA/RNA residues in this entry.

5.5 Carbohydrates [i](#)

There are no oligosaccharides in this entry.

5.6 Ligand geometry

5 ligands are modelled in this entry.

In the following table, the Counts columns list the number of bonds (or angles) for which Mogul statistics could be retrieved, the number of bonds (or angles) that are observed in the model and the number of bonds (or angles) that are defined in the Chemical Component Dictionary. The Link column lists molecule types, if any, to which the group is linked. The Z score for a bond length (or angle) is the number of standard deviations the observed value is removed from the expected value. A bond length (or angle) with $|Z| > 2$ is considered an outlier worth inspection. RMSZ is the root-mean-square of all Z scores of the bond lengths (or angles).

Mol	Type	Chain	Res	Link	Bond lengths			Bond angles		
					Counts	RMSZ	# Z > 2	Counts	RMSZ	# Z > 2
3	3N0	A	302	-	16,16,16	0.81	0	21,21,21	2.09	5 (23%)
2	GOL	A	301	-	5,5,5	0.48	0	5,5,5	0.48	0
2	GOL	A	304	-	5,5,5	0.22	0	5,5,5	0.70	0
2	GOL	A	303	-	5,5,5	0.86	0	5,5,5	1.61	2 (40%)
2	GOL	B	301	-	5,5,5	0.55	0	5,5,5	0.93	0

In the following table, the Chirals column lists the number of chiral outliers, the number of chiral centers analysed, the number of these observed in the model and the number defined in the Chemical Component Dictionary. Similar counts are reported in the Torsion and Rings columns. '-' means no outliers of that kind were identified.

Mol	Type	Chain	Res	Link	Chirals	Torsions	Rings
3	3N0	A	302	-	-	2/9/9/9	0/1/1/1
2	GOL	A	301	-	-	0/4/4/4	-
2	GOL	A	304	-	-	2/4/4/4	-
2	GOL	A	303	-	-	4/4/4/4	-
2	GOL	B	301	-	-	2/4/4/4	-

There are no bond length outliers.

All (7) bond angle outliers are listed below:

Mol	Chain	Res	Type	Atoms	Z	Observed(°)	Ideal(°)
3	A	302	3N0	C11-C1-C2	4.84	125.83	119.07
3	A	302	3N0	C6-C5-C4	4.04	122.03	119.53
3	A	302	3N0	C3-C4-C5	-3.86	117.77	120.45
3	A	302	3N0	C7-C6-C5	-2.89	118.44	120.45
3	A	302	3N0	O16-C1-C2	-2.81	116.97	120.73
2	A	303	GOL	O1-C1-C2	-2.25	100.23	110.38
2	A	303	GOL	O3-C3-C2	-2.13	100.79	110.38

There are no chirality outliers.

All (10) torsion outliers are listed below:

Mol	Chain	Res	Type	Atoms
2	B	301	GOL	O1-C1-C2-C3
2	A	303	GOL	O1-C1-C2-C3
2	A	303	GOL	C1-C2-C3-O3
2	A	303	GOL	O2-C2-C3-O3
2	A	304	GOL	C1-C2-C3-O3
2	A	303	GOL	O1-C1-C2-O2
2	A	304	GOL	O2-C2-C3-O3
3	A	302	3N0	C11-C12-C13-C14
2	B	301	GOL	O1-C1-C2-O2
3	A	302	3N0	C1-C11-C12-C13

There are no ring outliers.

4 monomers are involved in 6 short contacts:

Mol	Chain	Res	Type	Clashes	Symm-Clashes
3	A	302	3N0	1	0
2	A	301	GOL	1	0
2	A	303	GOL	2	0
2	B	301	GOL	2	0

5.7 Other polymers [i](#)

There are no such residues in this entry.

5.8 Polymer linkage issues [i](#)

There are no chain breaks in this entry.

6 Fit of model and data

6.1 Protein, DNA and RNA chains

In the following table, the column labelled ‘#RSRZ > 2’ contains the number (and percentage) of RSRZ outliers, followed by percent RSRZ outliers for the chain as percentile scores relative to all X-ray entries and entries of similar resolution. The OWAB column contains the minimum, median, 95th percentile and maximum values of the occupancy-weighted average B-factor per residue. The column labelled ‘Q < 0.9’ lists the number of (and percentage) of residues with an average occupancy less than 0.9.

Mol	Chain	Analysed	<RSRZ>	#RSRZ>2	OWAB(Å ²)	Q<0.9
1	A	231/256 (90%)	0.35	16 (6%) 23 24	15, 33, 62, 101	1 (0%)
1	B	235/256 (91%)	0.34	16 (6%) 23 25	21, 33, 65, 124	0
All	All	466/512 (91%)	0.34	32 (6%) 23 24	15, 33, 65, 124	1 (0%)

All (32) RSRZ outliers are listed below:

Mol	Chain	Res	Type	RSRZ
1	B	212	ALA	6.5
1	B	213	GLY	6.2
1	A	221	LEU	6.1
1	B	30	PRO	5.8
1	A	49	ALA	5.0
1	B	64	PHE	4.6
1	B	219	SER	4.6
1	A	48	THR	4.4
1	B	31	ALA	4.4
1	B	214	GLU	4.1
1	A	31	ALA	3.7
1	A	50	LYS	3.6
1	B	218	ALA	3.5
1	A	212	ALA	3.3
1	A	65	GLY	3.2
1	A	208	VAL	2.9
1	B	66	LYS	2.7
1	B	211	VAL	2.6
1	B	206	GLU	2.5
1	A	220	CYS	2.5
1	A	47	SER	2.4
1	B	267	PHE	2.3
1	A	266	PRO	2.3
1	A	62	PRO	2.3

Continued on next page...

Continued from previous page...

Mol	Chain	Res	Type	RSRZ
1	B	209	ALA	2.3
1	A	225	LEU	2.3
1	A	63	HIS	2.2
1	B	65	GLY	2.1
1	A	213	GLY	2.1
1	B	194	GLU	2.1
1	B	210	ALA	2.1
1	A	64	PHE	2.1

6.2 Non-standard residues in protein, DNA, RNA chains [i](#)

There are no non-standard protein/DNA/RNA residues in this entry.

6.3 Carbohydrates [i](#)

There are no oligosaccharides in this entry.

6.4 Ligands [i](#)

In the following table, the Atoms column lists the number of modelled atoms in the group and the number defined in the chemical component dictionary. The B-factors column lists the minimum, median, 95th percentile and maximum values of B factors of atoms in the group. The column labelled 'Q< 0.9' lists the number of atoms with occupancy less than 0.9.

Mol	Type	Chain	Res	Atoms	RSCC	RSR	B-factors(Å ²)	Q<0.9
3	3N0	A	302	16/16	0.75	0.20	46,76,98,99	0
2	GOL	A	303	6/6	0.81	0.19	35,51,60,62	0
2	GOL	A	304	6/6	0.85	0.18	52,58,64,70	0
2	GOL	A	301	6/6	0.96	0.07	28,31,35,35	0
2	GOL	B	301	6/6	0.97	0.08	25,29,30,33	0

6.5 Other polymers [i](#)

There are no such residues in this entry.