



wwPDB X-ray Structure Validation Summary Report ⓘ

Mar 6, 2026 – 11:37 AM UTC

PDB ID : 7RGF / pdb_00007rgf
Title : Protocadherin gammaC4 EC1-4 crystal structure disrupted trans interface
Authors : Goodman, K.M.; Mannepalli, S.; Honig, B.; Shapiro, L.
Deposited on : 2021-07-15
Resolution : 2.40 Å(reported)

This is a wwPDB X-ray Structure Validation Summary Report for a publicly released PDB entry.

We welcome your comments at validation@mail.wwpdb.org

A user guide is available at

<https://www.wwpdb.org/validation/2017/XrayValidationReportHelp>

with specific help available everywhere you see the ⓘ symbol.

The types of validation reports are described at

<http://www.wwpdb.org/validation/2017/FAQs#types>.

The following versions of software and data (see [references ⓘ](#)) were used in the production of this report:

MolProbity : 4-5-2 with Phenix2.0
Mogul : 2022.3.0, CSD as543be (2022)
Xtriage (Phenix) : 2.0
EDS : 3.0
Percentile statistics : 20250101.v01 (using entries in the PDB archive January 1st 2025)
CCP4 : 9.0.010 (Gargrove)
Density-Fitness : 1.0.12
Ideal geometry (proteins) : Engh & Huber (2001)
Ideal geometry (DNA, RNA) : Parkinson et al. (1996)
Validation Pipeline (wwPDB-VP) : 2.49

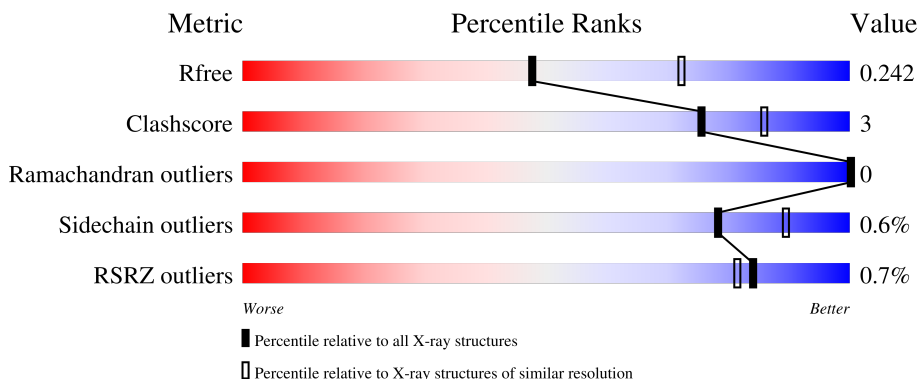
1 Overall quality at a glance

The following experimental techniques were used to determine the structure:

X-RAY DIFFRACTION

The reported resolution of this entry is 2.40 Å.

Percentile scores (ranging between 0-100) for global validation metrics of the entry are shown in the following graphic. The table shows the number of entries on which the scores are based.



Metric	Whole archive (#Entries)	Similar resolution (#Entries, resolution range(Å))
R_{free}	180053	4912 (2.40-2.40)
Clashscore	190562	5391 (2.40-2.40)
Ramachandran outliers	187476	5320 (2.40-2.40)
Sidechain outliers	187428	5321 (2.40-2.40)
RSRZ outliers	180081	4916 (2.40-2.40)

The table below summarises the geometric issues observed across the polymeric chains and their fit to the electron density. The red, orange, yellow and green segments of the lower bar indicate the fraction of residues that contain outliers for ≥ 3 , 2, 1 and 0 types of geometric quality criteria respectively. A grey segment represents the fraction of residues that are not modelled. The numeric value for each fraction is indicated below the corresponding segment, with a dot representing fractions $\leq 5\%$. The upper red bar (where present) indicates the fraction of residues that have poor fit to the electron density. The numeric value is given above the bar.

Mol	Chain	Length	Quality of chain
1	A	429	 91% 7%
1	B	429	 89% 9%
2	C	8	 100%
3	D	7	 100%

2 Entry composition [i](#)

There are 9 unique types of molecules in this entry. The entry contains 6736 atoms, of which 0 are hydrogens and 0 are deuteriums.

In the tables below, the ZeroOcc column contains the number of atoms modelled with zero occupancy, the AltConf column contains the number of residues with at least one atom in alternate conformation and the Trace column contains the number of residues modelled with at most 2 atoms.

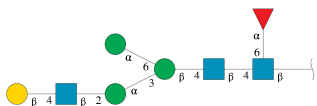
- Molecule 1 is a protein called Protocadherin gamma C4.

Mol	Chain	Residues	Atoms					ZeroOcc	AltConf	Trace
			Total	C	N	O	S			
1	A	418	3177	1977	559	634	7	0	0	0
1	B	418	3150	1962	550	632	6	0	0	0

There are 16 discrepancies between the modelled and reference sequences:

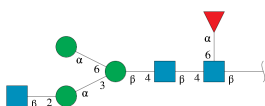
Chain	Residue	Modelled	Actual	Comment	Reference
A	422	HIS	-	expression tag	UNP Q91XX0
A	423	HIS	-	expression tag	UNP Q91XX0
A	424	HIS	-	expression tag	UNP Q91XX0
A	425	HIS	-	expression tag	UNP Q91XX0
A	426	HIS	-	expression tag	UNP Q91XX0
A	427	HIS	-	expression tag	UNP Q91XX0
A	428	HIS	-	expression tag	UNP Q91XX0
A	429	HIS	-	expression tag	UNP Q91XX0
B	422	HIS	-	expression tag	UNP Q91XX0
B	423	HIS	-	expression tag	UNP Q91XX0
B	424	HIS	-	expression tag	UNP Q91XX0
B	425	HIS	-	expression tag	UNP Q91XX0
B	426	HIS	-	expression tag	UNP Q91XX0
B	427	HIS	-	expression tag	UNP Q91XX0
B	428	HIS	-	expression tag	UNP Q91XX0
B	429	HIS	-	expression tag	UNP Q91XX0

- Molecule 2 is an oligosaccharide called beta-D-galactopyranose-(1-4)-2-acetamido-2-deoxy-beta-D-glucopyranose-(1-2)-alpha-D-mannopyranose-(1-3)-[alpha-D-mannopyranose-(1-6)]beta-D-mannopyranose-(1-4)-2-acetamido-2-deoxy-beta-D-glucopyranose-(1-4)-[alpha-L-fucopyranose-(1-6)]2-acetamido-2-deoxy-beta-D-glucopyranose.



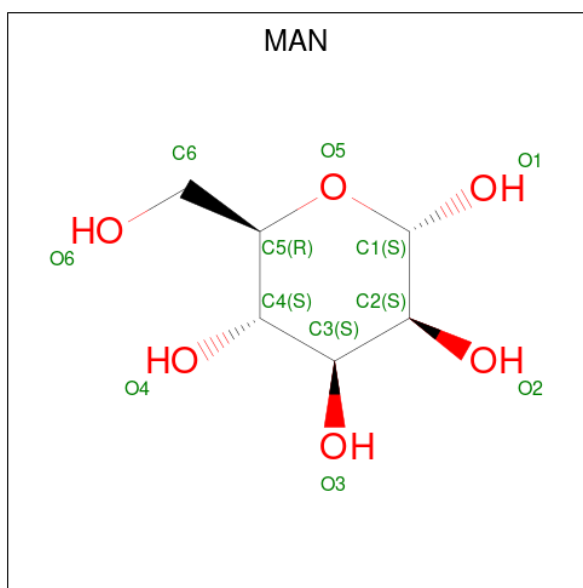
Mol	Chain	Residues	Atoms			ZeroOcc	AltConf	Trace	
			Total	C	N				O
2	C	8	96	54	3	39	0	0	0

- Molecule 3 is an oligosaccharide called 2-acetamido-2-deoxy-beta-D-glucopyranose-(1-2)-alpha-D-mannopyranose-(1-3)-[alpha-D-mannopyranose-(1-6)]beta-D-mannopyranose-(1-4)-2-acetamido-2-deoxy-beta-D-glucopyranose-(1-4)-[alpha-L-fucopyranose-(1-6)]2-acetamido-2-deoxy-beta-D-glucopyranose.



Mol	Chain	Residues	Atoms			ZeroOcc	AltConf	Trace	
			Total	C	N				O
3	D	7	85	48	3	34	0	0	0

- Molecule 4 is alpha-D-mannopyranose (CCD ID: MAN) (formula: C₆H₁₂O₆).



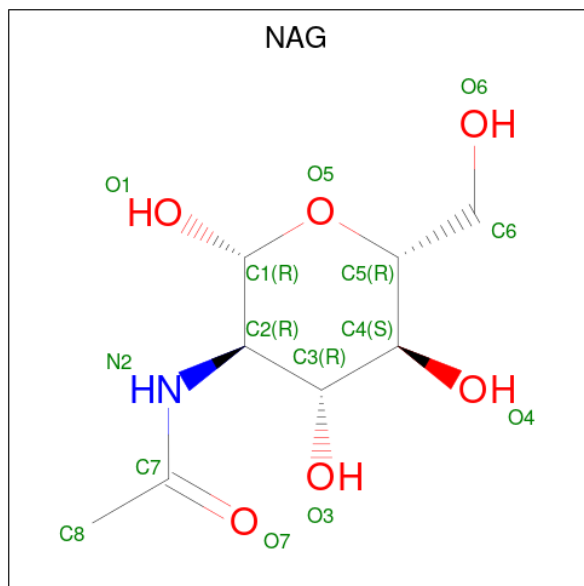
Mol	Chain	Residues	Atoms			ZeroOcc	AltConf
			Total	C	O		
4	A	1	11	6	5	0	0
4	A	1	11	6	5	0	0

Continued on next page...

Continued from previous page...

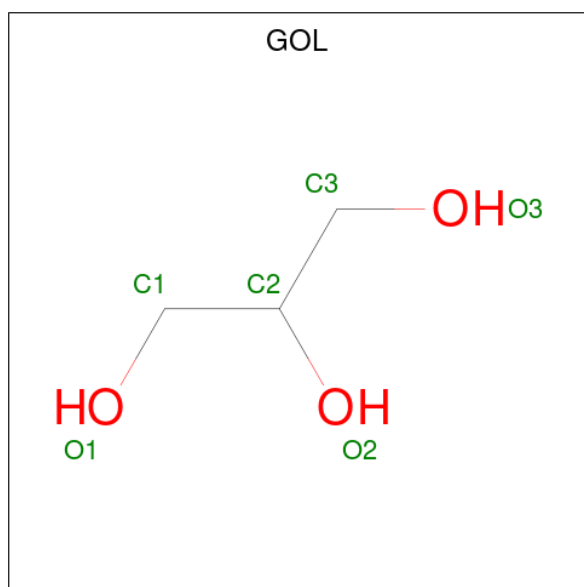
Mol	Chain	Residues	Atoms			ZeroOcc	AltConf
4	B	1	Total	C	O	0	0
			11	6	5		
4	B	1	Total	C	O	0	0
			11	6	5		

- Molecule 5 is 2-acetamido-2-deoxy-beta-D-glucopyranose (CCD ID: NAG) (formula: $C_8H_{15}NO_6$).



Mol	Chain	Residues	Atoms				ZeroOcc	AltConf
5	A	1	Total	C	N	O	0	0
			14	8	1	5		
5	B	1	Total	C	N	O	0	0
			14	8	1	5		

- Molecule 6 is GLYCEROL (CCD ID: GOL) (formula: $C_3H_8O_3$).



Mol	Chain	Residues	Atoms	ZeroOcc	AltConf
6	A	1	Total C O 6 3 3	0	0

- Molecule 7 is CALCIUM ION (CCD ID: CA) (formula: Ca).

Mol	Chain	Residues	Atoms	ZeroOcc	AltConf
7	A	9	Total Ca 9 9	0	0
7	B	9	Total Ca 9 9	0	0

- Molecule 8 is CHLORIDE ION (CCD ID: CL) (formula: Cl).

Mol	Chain	Residues	Atoms	ZeroOcc	AltConf
8	A	3	Total Cl 3 3	0	0
8	B	4	Total Cl 4 4	0	0

- Molecule 9 is water.

Mol	Chain	Residues	Atoms	ZeroOcc	AltConf
9	A	50	Total O 50 50	0	0
9	B	75	Total O 75 75	0	0

4 Data and refinement statistics

Property	Value	Source
Space group	P 21 21 21	Depositor
Cell constants a, b, c, α , β , γ	51.94Å 103.95Å 200.59Å 90.00° 90.00° 90.00°	Depositor
Resolution (Å)	38.16 – 2.40 38.16 – 2.40	Depositor EDS
% Data completeness (in resolution range)	98.5 (38.16-2.40) 94.2 (38.16-2.40)	Depositor EDS
R_{merge}	0.06	Depositor
R_{sym}	(Not available)	Depositor
$\langle I/\sigma(I) \rangle$ ¹	2.22 (at 2.39Å)	Xtrriage
Refinement program	PHENIX 1.13_2998	Depositor
R, R_{free}	0.196 , 0.240 0.198 , 0.242	Depositor DCC
R_{free} test set	2144 reflections (4.93%)	wwPDB-VP
Wilson B-factor (Å ²)	48.4	Xtrriage
Anisotropy	0.683	Xtrriage
Bulk solvent k_{sol} (e/Å ³), B_{sol} (Å ²)	0.28 , 32.6	EDS
L-test for twinning ²	$\langle L \rangle = 0.49$, $\langle L^2 \rangle = 0.32$	Xtrriage
Estimated twinning fraction	No twinning to report.	Xtrriage
F_o, F_c correlation	0.95	EDS
Total number of atoms	6736	wwPDB-VP
Average B, all atoms (Å ²)	73.0	wwPDB-VP

Xtrriage's analysis on translational NCS is as follows: *The largest off-origin peak in the Patterson function is 17.66% of the height of the origin peak. No significant pseudotranslation is detected.*

¹Intensities estimated from amplitudes.

²Theoretical values of $\langle |L| \rangle$, $\langle L^2 \rangle$ for acentric reflections are 0.5, 0.333 respectively for untwinned datasets, and 0.375, 0.2 for perfectly twinned datasets.

5 Model quality [i](#)

5.1 Standard geometry [i](#)

Bond lengths and bond angles in the following residue types are not validated in this section: FUC, MAN, GAL, BMA, CL, NAG, CA, GOL

The Z score for a bond length (or angle) is the number of standard deviations the observed value is removed from the expected value. A bond length (or angle) with $|Z| > 5$ is considered an outlier worth inspection. RMSZ is the root-mean-square of all Z scores of the bond lengths (or angles).

Mol	Chain	Bond lengths		Bond angles	
		RMSZ	# Z >5	RMSZ	# Z >5
1	A	0.13	0/3241	0.36	0/4418
1	B	0.13	0/3214	0.37	0/4386
All	All	0.13	0/6455	0.36	0/8804

There are no bond length outliers.

There are no bond angle outliers.

There are no chirality outliers.

There are no planarity outliers.

5.2 Too-close contacts [i](#)

In the following table, the Non-H and H(model) columns list the number of non-hydrogen atoms and hydrogen atoms in the chain respectively. The H(added) column lists the number of hydrogen atoms added and optimized by MolProbity. The Clashes column lists the number of clashes within the asymmetric unit, whereas Symm-Clashes lists symmetry-related clashes.

Mol	Chain	Non-H	H(model)	H(added)	Clashes	Symm-Clashes
1	A	3177	0	3072	16	0
1	B	3150	0	3021	26	0
2	C	96	0	82	0	0
3	D	85	0	73	0	0
4	A	22	0	20	0	0
4	B	22	0	20	0	0
5	A	14	0	13	0	0
5	B	14	0	13	0	0
6	A	6	0	8	0	0
7	A	9	0	0	0	0
7	B	9	0	0	0	0

Continued on next page...

Continued from previous page...

Mol	Chain	Non-H	H(model)	H(added)	Clashes	Symm-Clashes
8	A	3	0	0	0	0
8	B	4	0	0	0	0
9	A	50	0	0	1	0
9	B	75	0	0	2	0
All	All	6736	0	6322	39	0

The all-atom clashscore is defined as the number of clashes found per 1000 atoms (including hydrogen atoms). The all-atom clashscore for this structure is 3.

The worst 5 of 39 close contacts within the same asymmetric unit are listed below, sorted by their clash magnitude.

Atom-1	Atom-2	Interatomic distance (Å)	Clash overlap (Å)
1:B:294:ARG:HG2	1:B:302:GLU:HG2	1.74	0.69
1:B:81:THR:O	1:B:85:LEU:HD12	1.95	0.67
1:B:359:ARG:NH2	9:B:603:HOH:O	2.29	0.65
1:B:47:ARG:HH21	1:B:56:LEU:HD12	1.61	0.64
1:B:218:TYR:HB2	1:B:307:LEU:HD23	1.78	0.64

There are no symmetry-related clashes.

5.3 Torsion angles [i](#)

5.3.1 Protein backbone [i](#)

In the following table, the Percentiles column shows the percent Ramachandran outliers of the chain as a percentile score with respect to all X-ray entries followed by that with respect to entries of similar resolution.

The Analysed column shows the number of residues for which the backbone conformation was analysed, and the total number of residues.

Mol	Chain	Analysed	Favoured	Allowed	Outliers	Percentiles	
1	A	416/429 (97%)	412 (99%)	4 (1%)	0	100	100
1	B	416/429 (97%)	411 (99%)	5 (1%)	0	100	100
All	All	832/858 (97%)	823 (99%)	9 (1%)	0	100	100

There are no Ramachandran outliers to report.

5.3.2 Protein sidechains [i](#)

In the following table, the Percentiles column shows the percent sidechain outliers of the chain as a percentile score with respect to all X-ray entries followed by that with respect to entries of similar resolution.

The Analysed column shows the number of residues for which the sidechain conformation was analysed, and the total number of residues.

Mol	Chain	Analysed	Rotameric	Outliers	Percentiles	
1	A	352/371 (95%)	348 (99%)	4 (1%)	65	82
1	B	346/371 (93%)	346 (100%)	0	100	100
All	All	698/742 (94%)	694 (99%)	4 (1%)	78	89

All (4) residues with a non-rotameric sidechain are listed below:

Mol	Chain	Res	Type
1	A	201	VAL
1	A	259	ARG
1	A	386	ARG
1	A	403	ASN

Sometimes sidechains can be flipped to improve hydrogen bonding and reduce clashes. 5 of 6 such sidechains are listed below:

Mol	Chain	Res	Type
1	B	276	GLN
1	B	303	GLN
1	B	363	HIS
1	A	129	GLN
1	A	43	GLN

5.3.3 RNA [i](#)

There are no RNA molecules in this entry.

5.4 Non-standard residues in protein, DNA, RNA chains [i](#)

There are no non-standard protein/DNA/RNA residues in this entry.

5.5 Carbohydrates i

15 monosaccharides are modelled in this entry.

In the following table, the Counts columns list the number of bonds (or angles) for which Mogul statistics could be retrieved, the number of bonds (or angles) that are observed in the model and the number of bonds (or angles) that are defined in the Chemical Component Dictionary. The Link column lists molecule types, if any, to which the group is linked. The Z score for a bond length (or angle) is the number of standard deviations the observed value is removed from the expected value. A bond length (or angle) with $|Z| > 2$ is considered an outlier worth inspection. RMSZ is the root-mean-square of all Z scores of the bond lengths (or angles).

Mol	Type	Chain	Res	Link	Bond lengths			Bond angles		
					Counts	RMSZ	# Z > 2	Counts	RMSZ	# Z > 2
2	NAG	C	1	2,1	14,14,15	0.81	0	17,19,21	0.64	0
2	NAG	C	2	2	14,14,15	0.65	0	17,19,21	0.50	0
2	BMA	C	3	2	11,11,12	0.85	0	15,15,17	1.06	0
2	MAN	C	4	2	11,11,12	0.63	0	15,15,17	0.70	0
2	NAG	C	5	2	14,14,15	0.72	0	17,19,21	0.64	0
2	GAL	C	6	2	11,11,12	0.48	0	15,15,17	0.84	0
2	MAN	C	7	2	11,11,12	0.44	0	15,15,17	0.59	0
2	FUC	C	8	2	10,10,11	0.64	0	14,14,16	0.66	0
3	NAG	D	1	3,1	14,14,15	0.69	0	17,19,21	0.47	0
3	NAG	D	2	3	14,14,15	0.69	0	17,19,21	0.62	0
3	BMA	D	3	3	11,11,12	1.03	0	15,15,17	0.95	0
3	MAN	D	4	3	11,11,12	0.50	0	15,15,17	0.73	0
3	NAG	D	5	3	14,14,15	0.77	0	17,19,21	0.47	0
3	MAN	D	6	3	11,11,12	0.50	0	15,15,17	0.59	0
3	FUC	D	7	3	10,10,11	0.63	0	14,14,16	0.70	0

In the following table, the Chirals column lists the number of chiral outliers, the number of chiral centers analysed, the number of these observed in the model and the number defined in the Chemical Component Dictionary. Similar counts are reported in the Torsion and Rings columns. '-' means no outliers of that kind were identified.

Mol	Type	Chain	Res	Link	Chirals	Torsions	Rings
2	NAG	C	1	2,1	-	0/6/23/26	0/1/1/1
2	NAG	C	2	2	-	0/6/23/26	0/1/1/1
2	BMA	C	3	2	-	0/2/19/22	0/1/1/1
2	MAN	C	4	2	-	2/2/19/22	0/1/1/1
2	NAG	C	5	2	-	2/6/23/26	0/1/1/1
2	GAL	C	6	2	-	0/2/19/22	0/1/1/1
2	MAN	C	7	2	-	1/2/19/22	0/1/1/1
2	FUC	C	8	2	-	-	0/1/1/1
3	NAG	D	1	3,1	-	0/6/23/26	0/1/1/1

Continued on next page...

Continued from previous page...

Mol	Type	Chain	Res	Link	Chirals	Torsions	Rings
3	NAG	D	2	3	-	2/6/23/26	0/1/1/1
3	BMA	D	3	3	-	0/2/19/22	0/1/1/1
3	MAN	D	4	3	-	0/2/19/22	0/1/1/1
3	NAG	D	5	3	-	3/6/23/26	0/1/1/1
3	MAN	D	6	3	-	0/2/19/22	0/1/1/1
3	FUC	D	7	3	-	-	0/1/1/1

There are no bond length outliers.

There are no bond angle outliers.

There are no chirality outliers.

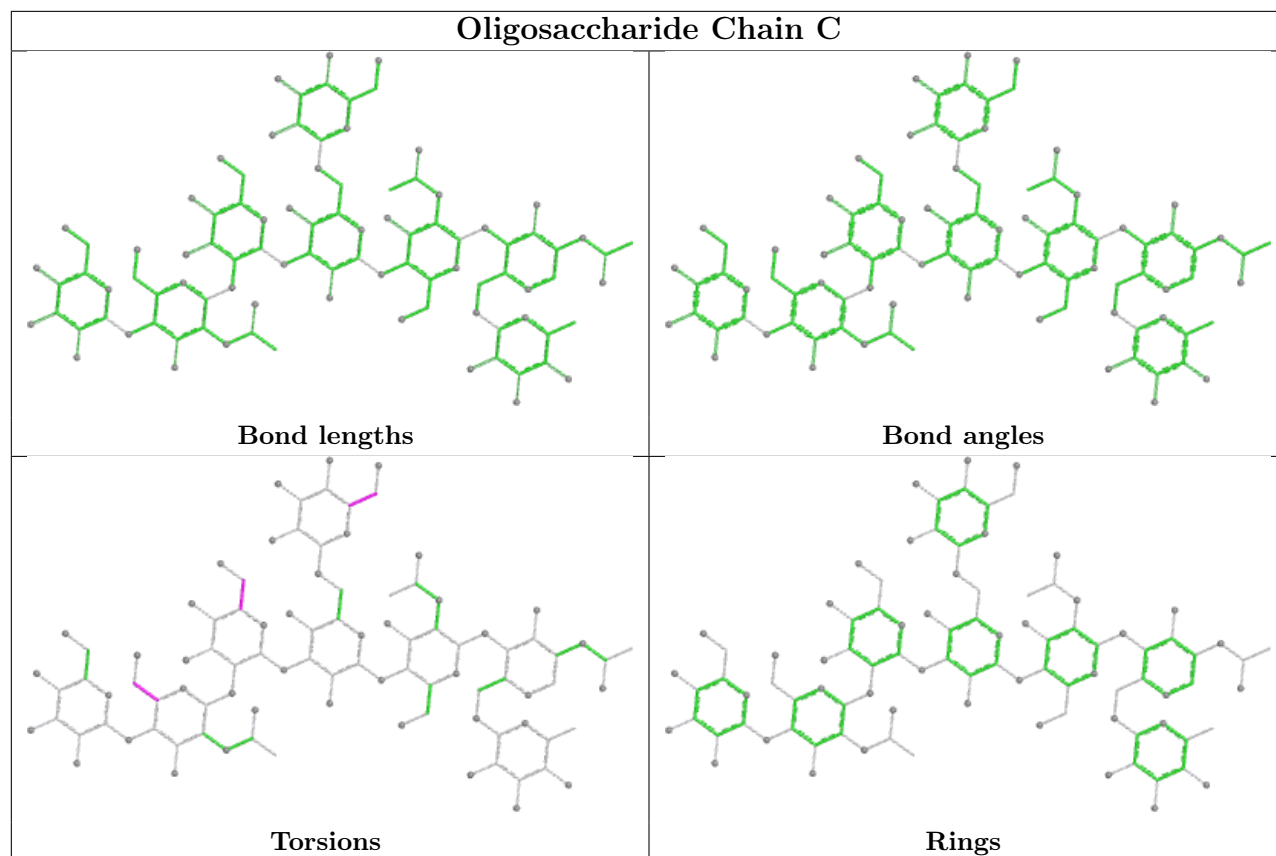
5 of 10 torsion outliers are listed below:

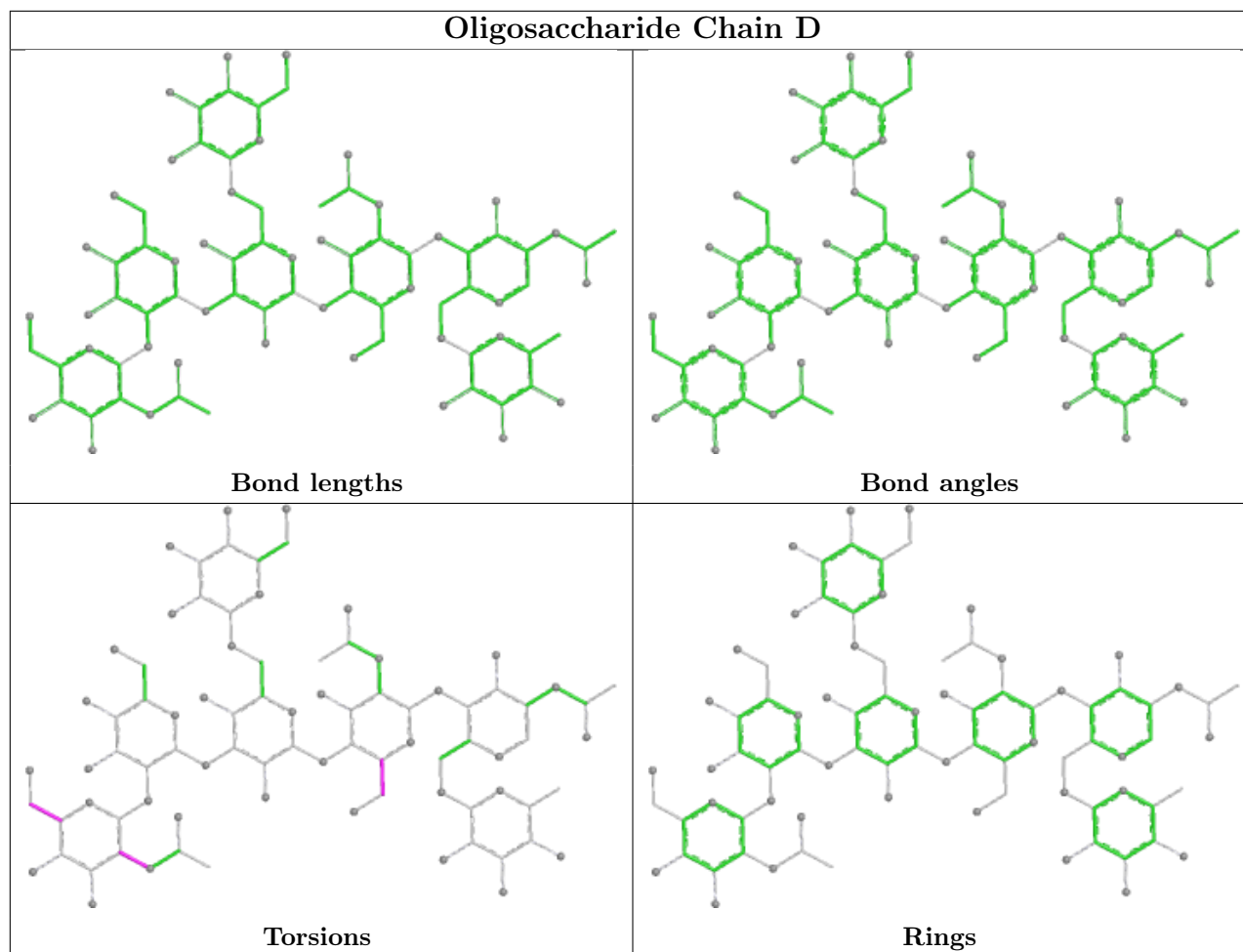
Mol	Chain	Res	Type	Atoms
2	C	4	MAN	O5-C5-C6-O6
2	C	4	MAN	C4-C5-C6-O6
3	D	2	NAG	O5-C5-C6-O6
3	D	2	NAG	C4-C5-C6-O6
3	D	5	NAG	C4-C5-C6-O6

There are no ring outliers.

No monomer is involved in short contacts.

The following is a two-dimensional graphical depiction of Mogul quality analysis of bond lengths, bond angles, torsion angles, and ring geometry for oligosaccharide.





5.6 Ligand geometry [i](#)

Of 32 ligands modelled in this entry, 25 are monoatomic - leaving 7 for Mogul analysis.

In the following table, the Counts columns list the number of bonds (or angles) for which Mogul statistics could be retrieved, the number of bonds (or angles) that are observed in the model and the number of bonds (or angles) that are defined in the Chemical Component Dictionary. The Link column lists molecule types, if any, to which the group is linked. The Z score for a bond length (or angle) is the number of standard deviations the observed value is removed from the expected value. A bond length (or angle) with $|Z| > 2$ is considered an outlier worth inspection. RMSZ is the root-mean-square of all Z scores of the bond lengths (or angles).

Mol	Type	Chain	Res	Link	Bond lengths			Bond angles		
					Counts	RMSZ	# $ Z > 2$	Counts	RMSZ	# $ Z > 2$
4	MAN	A	502	1	11,11,12	0.43	0	15,15,17	0.68	0
4	MAN	B	502	1	11,11,12	0.50	0	15,15,17	0.60	0
6	GOL	A	504	-	5,5,5	0.93	0	5,5,5	1.14	1 (20%)
5	NAG	A	503	1	14,14,15	0.79	1 (7%)	17,19,21	0.57	0
4	MAN	B	501	1	11,11,12	0.47	0	15,15,17	0.72	0
4	MAN	A	501	1	11,11,12	0.50	0	15,15,17	0.68	0

Mol	Type	Chain	Res	Link	Bond lengths			Bond angles		
					Counts	RMSZ	# Z > 2	Counts	RMSZ	# Z > 2
5	NAG	B	503	1	14,14,15	0.66	0	17,19,21	0.70	1 (5%)

In the following table, the Chirals column lists the number of chiral outliers, the number of chiral centers analysed, the number of these observed in the model and the number defined in the Chemical Component Dictionary. Similar counts are reported in the Torsion and Rings columns. '-' means no outliers of that kind were identified.

Mol	Type	Chain	Res	Link	Chirals	Torsions	Rings
4	MAN	A	502	1	-	0/2/19/22	0/1/1/1
4	MAN	B	502	1	-	0/2/19/22	0/1/1/1
6	GOL	A	504	-	-	0/4/4/4	-
5	NAG	A	503	1	-	2/6/23/26	0/1/1/1
4	MAN	B	501	1	-	2/2/19/22	0/1/1/1
4	MAN	A	501	1	-	2/2/19/22	0/1/1/1
5	NAG	B	503	1	-	2/6/23/26	0/1/1/1

All (1) bond length outliers are listed below:

Mol	Chain	Res	Type	Atoms	Z	Observed(Å)	Ideal(Å)
5	A	503	NAG	C1-C2	2.22	1.55	1.52

All (2) bond angle outliers are listed below:

Mol	Chain	Res	Type	Atoms	Z	Observed(°)	Ideal(°)
5	B	503	NAG	C2-N2-C7	2.39	126.10	122.90
6	A	504	GOL	C3-C2-C1	-2.14	103.97	111.80

There are no chirality outliers.

5 of 8 torsion outliers are listed below:

Mol	Chain	Res	Type	Atoms
5	A	503	NAG	O5-C5-C6-O6
4	A	501	MAN	C4-C5-C6-O6
4	A	501	MAN	O5-C5-C6-O6
4	B	501	MAN	C4-C5-C6-O6
5	B	503	NAG	C3-C2-N2-C7

There are no ring outliers.

No monomer is involved in short contacts.

5.7 Other polymers [i](#)

There are no such residues in this entry.

5.8 Polymer linkage issues [i](#)

There are no chain breaks in this entry.

6 Fit of model and data [i](#)

6.1 Protein, DNA and RNA chains [i](#)

In the following table, the column labelled ‘#RSRZ> 2’ contains the number (and percentage) of RSRZ outliers, followed by percent RSRZ outliers for the chain as percentile scores relative to all X-ray entries and entries of similar resolution. The OWAB column contains the minimum, median, 95th percentile and maximum values of the occupancy-weighted average B-factor per residue. The column labelled ‘Q< 0.9’ lists the number of (and percentage) of residues with an average occupancy less than 0.9.

Mol	Chain	Analysed	<RSRZ>	#RSRZ>2	OWAB(Å ²)	Q<0.9
1	A	418/429 (97%)	0.10	3 (0%) 84 81	39, 72, 107, 118	0
1	B	418/429 (97%)	-0.05	3 (0%) 84 81	38, 65, 115, 153	0
All	All	836/858 (97%)	0.03	6 (0%) 84 81	38, 68, 110, 153	0

The worst 5 of 6 RSRZ outliers are listed below:

Mol	Chain	Res	Type	RSRZ
1	A	418	ASP	4.6
1	B	85	LEU	3.3
1	A	383	PRO	2.5
1	B	30	LEU	2.1
1	B	324	THR	2.1

6.2 Non-standard residues in protein, DNA, RNA chains [i](#)

There are no non-standard protein/DNA/RNA residues in this entry.

6.3 Carbohydrates [i](#)

In the following table, the Atoms column lists the number of modelled atoms in the group and the number defined in the chemical component dictionary. The B-factors column lists the minimum, median, 95th percentile and maximum values of B factors of atoms in the group. The column labelled ‘Q< 0.9’ lists the number of atoms with occupancy less than 0.9.

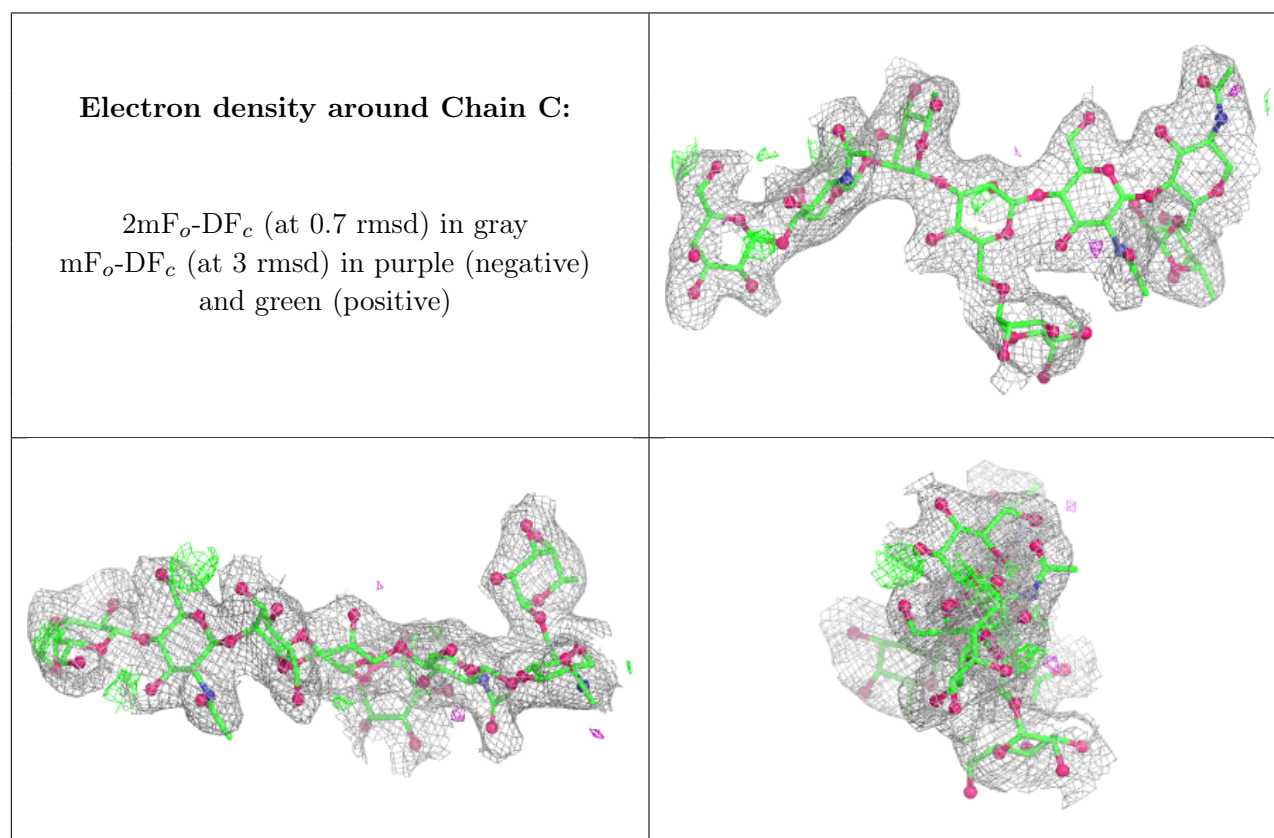
Mol	Type	Chain	Res	Atoms	RSCC	RSR	B-factors(Å ²)	Q<0.9
2	MAN	C	7	11/12	0.50	0.12	124,128,131,131	0
3	MAN	D	6	11/12	0.59	0.12	113,117,117,120	0
2	GAL	C	6	11/12	0.71	0.13	96,102,104,104	0
3	FUC	D	7	10/11	0.79	0.12	96,100,103,107	0
3	NAG	D	2	14/15	0.81	0.11	91,95,98,100	0

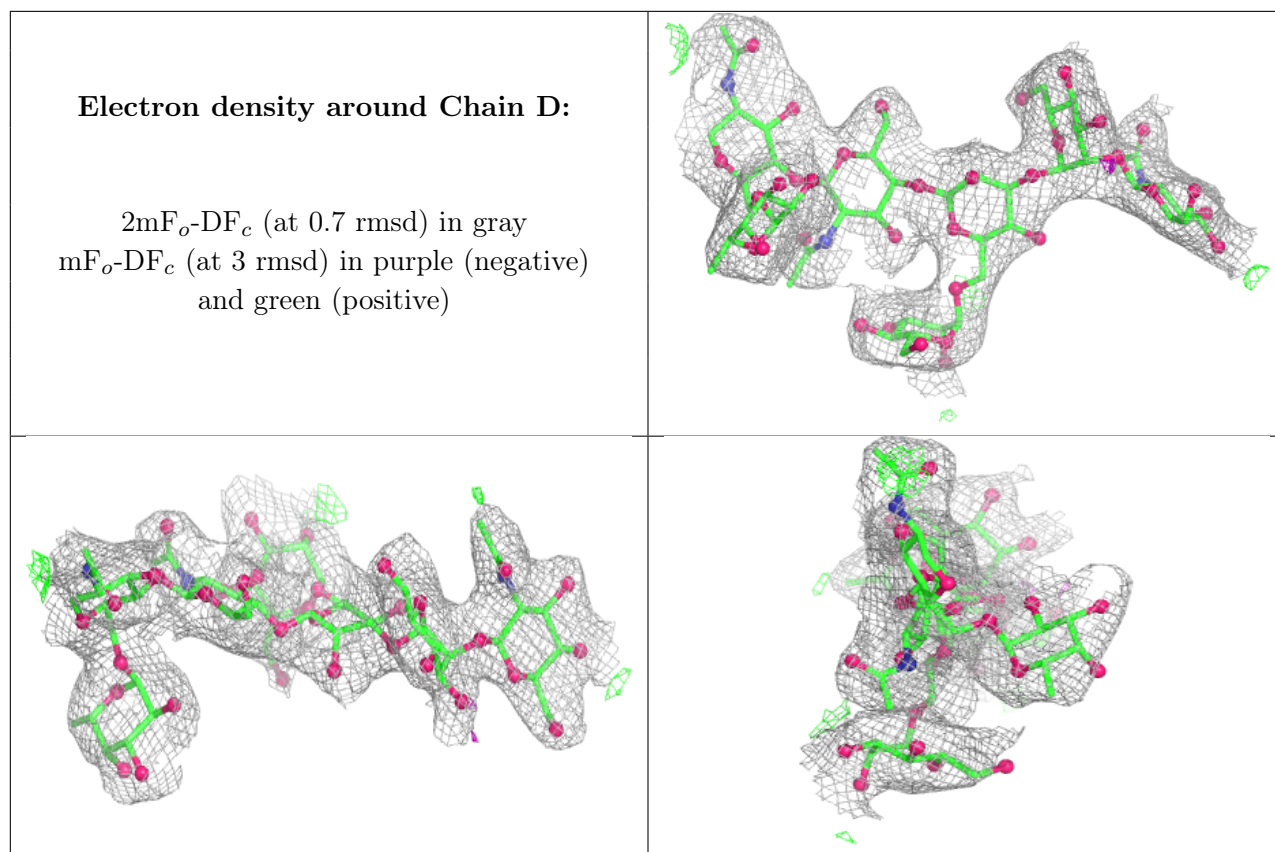
Continued on next page...

Continued from previous page...

Mol	Type	Chain	Res	Atoms	RSCC	RSR	B-factors(\AA^2)	Q<0.9
2	FUC	C	8	10/11	0.82	0.10	89,93,97,100	0
3	BMA	D	3	11/12	0.82	0.09	96,103,109,112	0
2	BMA	C	3	11/12	0.83	0.09	79,91,119,132	0
3	NAG	D	5	14/15	0.84	0.13	75,77,81,90	0
2	NAG	C	2	14/15	0.85	0.10	77,81,91,91	0
3	MAN	D	4	11/12	0.87	0.13	74,83,88,89	0
2	NAG	C	5	14/15	0.92	0.08	61,76,78,88	0
2	NAG	C	1	14/15	0.93	0.07	47,58,77,86	0
2	MAN	C	4	11/12	0.94	0.06	62,66,71,72	0
3	NAG	D	1	14/15	0.94	0.08	50,62,91,107	0

The following is a graphical depiction of the model fit to experimental electron density for oligosaccharide. Each fit is shown from different orientation to approximate a three-dimensional view.





6.4 Ligands [i](#)

In the following table, the Atoms column lists the number of modelled atoms in the group and the number defined in the chemical component dictionary. The B-factors column lists the minimum, median, 95th percentile and maximum values of B factors of atoms in the group. The column labelled 'Q< 0.9' lists the number of atoms with occupancy less than 0.9.

Mol	Type	Chain	Res	Atoms	RSCC	RSR	B-factors(Å ²)	Q<0.9
5	NAG	B	503	14/15	0.65	0.14	83,105,114,118	0
5	NAG	A	503	14/15	0.71	0.11	87,102,110,119	0
4	MAN	A	501	11/12	0.76	0.11	86,93,100,103	0
4	MAN	A	502	11/12	0.79	0.10	66,81,88,91	0
4	MAN	B	501	11/12	0.81	0.14	76,93,96,97	0
4	MAN	B	502	11/12	0.81	0.12	74,92,98,101	0
6	GOL	A	504	6/6	0.84	0.16	75,85,90,94	0
8	CL	A	515	1/1	0.93	0.16	74,74,74,74	0
8	CL	B	514	1/1	0.93	0.11	64,64,64,64	0
8	CL	A	516	1/1	0.94	0.14	74,74,74,74	0
7	CA	A	505	1/1	0.96	0.08	76,76,76,76	0
8	CL	B	515	1/1	0.96	0.09	69,69,69,69	0
7	CA	A	513	1/1	0.97	0.06	64,64,64,64	0
7	CA	A	512	1/1	0.98	0.03	60,60,60,60	0

Continued on next page...

Continued from previous page...

Mol	Type	Chain	Res	Atoms	RSCC	RSR	B-factors(\AA^2)	Q<0.9
7	CA	A	511	1/1	0.98	0.05	66,66,66,66	0
8	CL	B	513	1/1	0.98	0.04	48,48,48,48	0
7	CA	B	504	1/1	0.98	0.04	62,62,62,62	0
8	CL	A	514	1/1	0.98	0.07	56,56,56,56	0
8	CL	B	516	1/1	0.98	0.05	74,74,74,74	0
7	CA	B	508	1/1	0.99	0.04	54,54,54,54	0
7	CA	B	509	1/1	0.99	0.03	52,52,52,52	0
7	CA	B	510	1/1	0.99	0.04	54,54,54,54	0
7	CA	B	511	1/1	0.99	0.04	42,42,42,42	0
7	CA	B	512	1/1	0.99	0.03	38,38,38,38	0
7	CA	A	506	1/1	0.99	0.04	60,60,60,60	0
7	CA	A	507	1/1	0.99	0.05	52,52,52,52	0
7	CA	A	508	1/1	0.99	0.04	77,77,77,77	0
7	CA	A	510	1/1	0.99	0.03	51,51,51,51	0
7	CA	B	505	1/1	0.99	0.03	63,63,63,63	0
7	CA	B	506	1/1	0.99	0.04	55,55,55,55	0
7	CA	B	507	1/1	0.99	0.02	73,73,73,73	0
7	CA	A	509	1/1	1.00	0.04	69,69,69,69	0

6.5 Other polymers [i](#)

There are no such residues in this entry.