



wwPDB X-ray Structure Validation Summary Report ⓘ

Mar 5, 2026 – 11:02 AM UTC

PDB ID : 1RL3 / pdb_00001rl3
Title : Crystal structure of cAMP-free R1a subunit of PKA
Authors : Wu, J.; Brown, S.; Xuong, N.-H.; Taylor, S.S.
Deposited on : 2003-11-24
Resolution : 2.70 Å(reported)

This is a wwPDB X-ray Structure Validation Summary Report for a publicly released PDB entry.

We welcome your comments at validation@mail.wwpdb.org

A user guide is available at

<https://www.wwpdb.org/validation/2017/XrayValidationReportHelp>

with specific help available everywhere you see the ⓘ symbol.

The types of validation reports are described at

<http://www.wwpdb.org/validation/2017/FAQs#types>.

The following versions of software and data (see [references ⓘ](#)) were used in the production of this report:

MolProbity : 4-5-2 with Phenix2.0
Mogul : 2022.3.0, CSD as543be (2022)
Xtrriage (Phenix) : 2.0
EDS : 3.0
Buster-report : wwPDB partial adaption of 1.1.7 (2018)
Percentile statistics : 20250101.v01 (using entries in the PDB archive January 1st 2025)
CCP4 : 9.0.010 (Gargrove)
Density-Fitness : 1.0.12
Ideal geometry (proteins) : Engh & Huber (2001)
Ideal geometry (DNA, RNA) : Parkinson et al. (1996)
Validation Pipeline (wwPDB-VP) : 2.49

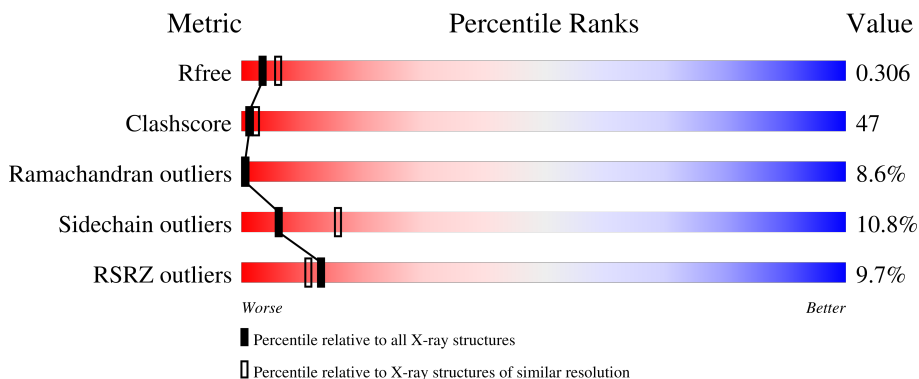
1 Overall quality at a glance

The following experimental techniques were used to determine the structure:

X-RAY DIFFRACTION

The reported resolution of this entry is 2.70 Å.

Percentile scores (ranging between 0-100) for global validation metrics of the entry are shown in the following graphic. The table shows the number of entries on which the scores are based.



Metric	Whole archive (#Entries)	Similar resolution (#Entries, resolution range(Å))
R_{free}	180053	3538 (2.70-2.70)
Clashscore	190562	3843 (2.70-2.70)
Ramachandran outliers	187476	3778 (2.70-2.70)
Sidechain outliers	187428	3778 (2.70-2.70)
RSRZ outliers	180081	3538 (2.70-2.70)

The table below summarises the geometric issues observed across the polymeric chains and their fit to the electron density. The red, orange, yellow and green segments of the lower bar indicate the fraction of residues that contain outliers for ≥ 3 , 2, 1 and 0 types of geometric quality criteria respectively. A grey segment represents the fraction of residues that are not modelled. The numeric value for each fraction is indicated below the corresponding segment, with a dot representing fractions $\leq 5\%$. The upper red bar (where present) indicates the fraction of residues that have poor fit to the electron density. The numeric value is given above the bar.

Mol	Chain	Length	Quality of chain
1	A	288	
1	B	288	

The following table lists non-polymeric compounds, carbohydrate monomers and non-standard residues in protein, DNA, RNA chains that are outliers for geometric or electron-density-fit criteria:

Mol	Type	Chain	Res	Chirality	Geometry	Clashes	Electron density
3	GOL	A	402	-	X	-	-
3	GOL	B	802	-	X	-	-
3	GOL	B	901	-	X	-	-

2 Entry composition [i](#)

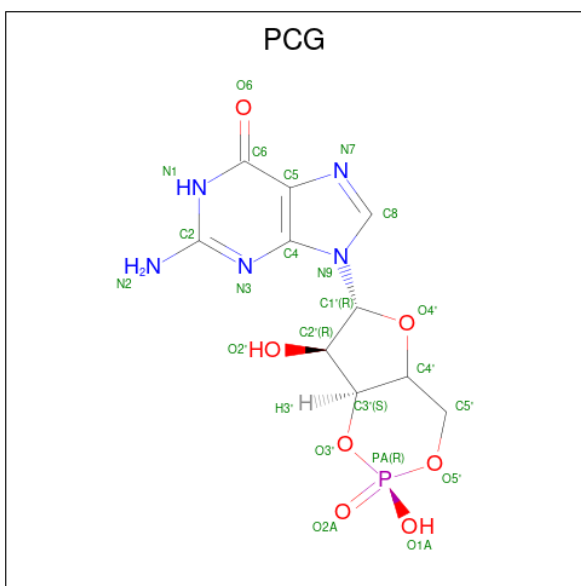
There are 4 unique types of molecules in this entry. The entry contains 4008 atoms, of which 0 are hydrogens and 0 are deuteriums.

In the tables below, the ZeroOcc column contains the number of atoms modelled with zero occupancy, the AltConf column contains the number of residues with at least one atom in alternate conformation and the Trace column contains the number of residues modelled with at most 2 atoms.

- Molecule 1 is a protein called cAMP-dependent protein kinase type I-alpha regulatory chain.

Mol	Chain	Residues	Atoms					ZeroOcc	AltConf	Trace
			Total	C	N	O	S			
1	A	268	Total	C	N	O	S	0	0	0
			1991	1259	339	386	7			
1	B	259	Total	C	N	O	S	0	0	0
			1936	1232	325	372	7			

- Molecule 2 is CYCLIC GUANOSINE MONOPHOSPHATE (CCD ID: PCG) (formula: C₁₀H₁₂N₅O₇P).



Mol	Chain	Residues	Atoms					ZeroOcc	AltConf
			Total	C	N	O	P		
2	A	1	Total	C	N	O	P	0	0
			23	10	5	7	1		
2	B	1	Total	C	N	O	P	0	0
			23	10	5	7	1		

- Molecule 3 is GLYCEROL (CCD ID: GOL) (formula: C₃H₈O₃).



Mol	Chain	Residues	Atoms	ZeroOcc	AltConf
3	A	1	Total C O 6 3 3	0	0
3	B	1	Total C O 6 3 3	0	0
3	B	1	Total C O 6 3 3	0	0

- Molecule 4 is water.

Mol	Chain	Residues	Atoms	ZeroOcc	AltConf
4	A	12	Total O 12 12	0	0
4	B	5	Total O 5 5	0	0

4 Data and refinement statistics i

Property	Value	Source
Space group	P 65	Depositor
Cell constants a, b, c, α , β , γ	90.30Å 90.30Å 177.60Å 90.00° 90.00° 120.00°	Depositor
Resolution (Å)	50.00 – 2.70 50.00 – 2.70	Depositor EDS
% Data completeness (in resolution range)	(Not available) (50.00-2.70) 87.4 (50.00-2.70)	Depositor EDS
R_{merge}	0.05	Depositor
R_{sym}	(Not available)	Depositor
$\langle I/\sigma(I) \rangle$ ¹	1.42 (at 2.68Å)	Xtrriage
Refinement program	CNS	Depositor
R, R_{free}	0.240 , 0.285 0.262 , 0.306	Depositor DCC
R_{free} test set	2075 reflections (9.86%)	wwPDB-VP
Wilson B-factor (Å ²)	58.6	Xtrriage
Anisotropy	0.303	Xtrriage
Bulk solvent k_{sol} (e/Å ³), B_{sol} (Å ²)	0.34 , 62.2	EDS
L-test for twinning ²	$\langle L \rangle = 0.48$, $\langle L^2 \rangle = 0.30$	Xtrriage
Estimated twinning fraction	0.094 for h,-h-k,-l	Xtrriage
F_o, F_c correlation	0.90	EDS
Total number of atoms	4008	wwPDB-VP
Average B, all atoms (Å ²)	51.0	wwPDB-VP

Xtrriage's analysis on translational NCS is as follows: *The largest off-origin peak in the Patterson function is 5.04% of the height of the origin peak. No significant pseudotranslation is detected.*

¹Intensities estimated from amplitudes.

²Theoretical values of $\langle |L| \rangle$, $\langle L^2 \rangle$ for acentric reflections are 0.5, 0.333 respectively for untwinned datasets, and 0.375, 0.2 for perfectly twinned datasets.

5 Model quality [i](#)

5.1 Standard geometry [i](#)

Bond lengths and bond angles in the following residue types are not validated in this section: GOL, PCG

The Z score for a bond length (or angle) is the number of standard deviations the observed value is removed from the expected value. A bond length (or angle) with $|Z| > 5$ is considered an outlier worth inspection. RMSZ is the root-mean-square of all Z scores of the bond lengths (or angles).

Mol	Chain	Bond lengths		Bond angles	
		RMSZ	# Z >5	RMSZ	# Z >5
1	A	0.60	0/2029	1.19	26/2753 (0.9%)
1	B	0.57	0/1973	1.16	17/2674 (0.6%)
All	All	0.58	0/4002	1.18	43/5427 (0.8%)

There are no bond length outliers.

The worst 5 of 43 bond angle outliers are listed below:

Mol	Chain	Res	Type	Atoms	Z	Observed(°)	Ideal(°)
1	A	362	ASP	N-CA-C	-13.96	95.68	113.12
1	B	587	GLU	CA-C-O	-11.99	105.54	120.28
1	B	516	ILE	CA-C-N	10.63	133.13	119.84
1	B	516	ILE	C-N-CA	10.63	133.13	119.84
1	B	586	ASN	CA-CB-CG	-8.98	103.62	112.60

There are no chirality outliers.

There are no planarity outliers.

5.2 Too-close contacts [i](#)

In the following table, the Non-H and H(model) columns list the number of non-hydrogen atoms and hydrogen atoms in the chain respectively. The H(added) column lists the number of hydrogen atoms added and optimized by MolProbity. The Clashes column lists the number of clashes within the asymmetric unit, whereas Symm-Clashes lists symmetry-related clashes.

Mol	Chain	Non-H	H(model)	H(added)	Clashes	Symm-Clashes
1	A	1991	0	1835	204	0
1	B	1936	0	1820	159	0
2	A	23	0	11	3	0
2	B	23	0	11	2	0

Continued on next page...

Continued from previous page...

Mol	Chain	Non-H	H(model)	H(added)	Clashes	Symm-Clashes
3	A	6	0	4	2	0
3	B	12	0	8	2	0
4	A	12	0	0	1	0
4	B	5	0	0	0	0
All	All	4008	0	3689	358	0

The all-atom clashscore is defined as the number of clashes found per 1000 atoms (including hydrogen atoms). The all-atom clashscore for this structure is 47.

The worst 5 of 358 close contacts within the same asymmetric unit are listed below, sorted by their clash magnitude.

Atom-1	Atom-2	Interatomic distance (Å)	Clash overlap (Å)
1:A:165:GLN:NE2	1:A:185:ASN:H	1.56	1.01
1:A:163:ILE:HB	1:A:213:VAL:HG23	1.43	1.00
1:A:316:LEU:HD22	1:A:320:ASP:HB3	1.46	0.97
1:B:756:VAL:HG23	1:B:757:LEU:HD13	1.49	0.95
1:A:165:GLN:HE22	1:A:185:ASN:N	1.65	0.94

There are no symmetry-related clashes.

5.3 Torsion angles [i](#)

5.3.1 Protein backbone [i](#)

In the following table, the Percentiles column shows the percent Ramachandran outliers of the chain as a percentile score with respect to all X-ray entries followed by that with respect to entries of similar resolution.

The Analysed column shows the number of residues for which the backbone conformation was analysed, and the total number of residues.

Mol	Chain	Analysed	Favoured	Allowed	Outliers	Percentiles	
1	A	266/288 (92%)	196 (74%)	42 (16%)	28 (10%)	0	0
1	B	257/288 (89%)	210 (82%)	30 (12%)	17 (7%)	1	1
All	All	523/576 (91%)	406 (78%)	72 (14%)	45 (9%)	0	1

5 of 45 Ramachandran outliers are listed below:

Mol	Chain	Res	Type
1	A	114	LYS
1	A	117	PRO
1	A	186	ASN
1	A	208	PRO
1	A	210	ALA

5.3.2 Protein sidechains [i](#)

In the following table, the Percentiles column shows the percent sidechain outliers of the chain as a percentile score with respect to all X-ray entries followed by that with respect to entries of similar resolution.

The Analysed column shows the number of residues for which the sidechain conformation was analysed, and the total number of residues.

Mol	Chain	Analysed	Rotameric	Outliers	Percentiles
1	A	191/244 (78%)	166 (87%)	25 (13%)	4 10
1	B	188/244 (77%)	172 (92%)	16 (8%)	10 25
All	All	379/488 (78%)	338 (89%)	41 (11%)	6 16

5 of 41 residues with a non-rotameric sidechain are listed below:

Mol	Chain	Res	Type
1	B	531	GLU
1	B	586	ASN
1	B	540	ASP
1	B	551	MET
1	B	601	LEU

Sometimes sidechains can be flipped to improve hydrogen bonding and reduce clashes. 5 of 14 such sidechains are listed below:

Mol	Chain	Res	Type
1	B	542	ASN
1	B	564	GLN
1	B	767	ASN
1	B	585	ASN
1	B	678	GLN

5.3.3 RNA [i](#)

There are no RNA molecules in this entry.

5.4 Non-standard residues in protein, DNA, RNA chains [i](#)

There are no non-standard protein/DNA/RNA residues in this entry.

5.5 Carbohydrates [i](#)

There are no oligosaccharides in this entry.

5.6 Ligand geometry [i](#)

5 ligands are modelled in this entry.

In the following table, the Counts columns list the number of bonds (or angles) for which Mogul statistics could be retrieved, the number of bonds (or angles) that are observed in the model and the number of bonds (or angles) that are defined in the Chemical Component Dictionary. The Link column lists molecule types, if any, to which the group is linked. The Z score for a bond length (or angle) is the number of standard deviations the observed value is removed from the expected value. A bond length (or angle) with $|Z| > 2$ is considered an outlier worth inspection. RMSZ is the root-mean-square of all Z scores of the bond lengths (or angles).

Mol	Type	Chain	Res	Link	Bond lengths			Bond angles		
					Counts	RMSZ	# Z > 2	Counts	RMSZ	# Z > 2
2	PCG	A	401	-	26,26,26	2.27	7 (26%)	39,41,41	3.18	11 (28%)
3	GOL	B	802	-	5,5,5	4.71	5 (100%)	5,5,5	6.12	3 (60%)
3	GOL	A	402	-	5,5,5	4.96	5 (100%)	5,5,5	6.11	3 (60%)
2	PCG	B	801	-	26,26,26	2.54	11 (42%)	39,41,41	2.98	12 (30%)
3	GOL	B	901	-	5,5,5	4.66	5 (100%)	5,5,5	6.15	3 (60%)

In the following table, the Chirals column lists the number of chiral outliers, the number of chiral centers analysed, the number of these observed in the model and the number defined in the Chemical Component Dictionary. Similar counts are reported in the Torsion and Rings columns. '-' means no outliers of that kind were identified.

Mol	Type	Chain	Res	Link	Chirals	Torsions	Rings
2	PCG	A	401	-	-	0/4/31/31	1/4/4/4
3	GOL	B	802	-	-	2/4/4/4	-
3	GOL	A	402	-	-	2/4/4/4	-
2	PCG	B	801	-	-	0/4/31/31	0/4/4/4
3	GOL	B	901	-	-	3/4/4/4	-

The worst 5 of 33 bond length outliers are listed below:

Mol	Chain	Res	Type	Atoms	Z	Observed(Å)	Ideal(Å)
3	A	402	GOL	C3-C2	-8.42	1.19	1.51
3	B	802	GOL	C3-C2	-7.91	1.21	1.51
3	B	901	GOL	C3-C2	-7.81	1.22	1.51
2	B	801	PCG	PA-O5'	-7.06	1.49	1.57
2	A	401	PCG	PA-O5'	-6.55	1.50	1.57

The worst 5 of 32 bond angle outliers are listed below:

Mol	Chain	Res	Type	Atoms	Z	Observed(°)	Ideal(°)
2	B	801	PCG	O3'-C3'-C2'	12.01	127.39	115.61
3	B	901	GOL	O3-C3-C2	11.17	160.67	110.38
3	A	402	GOL	O3-C3-C2	11.17	160.64	110.38
3	B	802	GOL	O3-C3-C2	10.99	159.86	110.38
2	A	401	PCG	O3'-C3'-C2'	10.27	125.68	115.61

There are no chirality outliers.

5 of 7 torsion outliers are listed below:

Mol	Chain	Res	Type	Atoms
3	A	402	GOL	C1-C2-C3-O3
3	B	802	GOL	O1-C1-C2-C3
3	B	802	GOL	C1-C2-C3-O3
3	B	901	GOL	C1-C2-C3-O3
3	B	901	GOL	O1-C1-C2-C3

All (1) ring outliers are listed below:

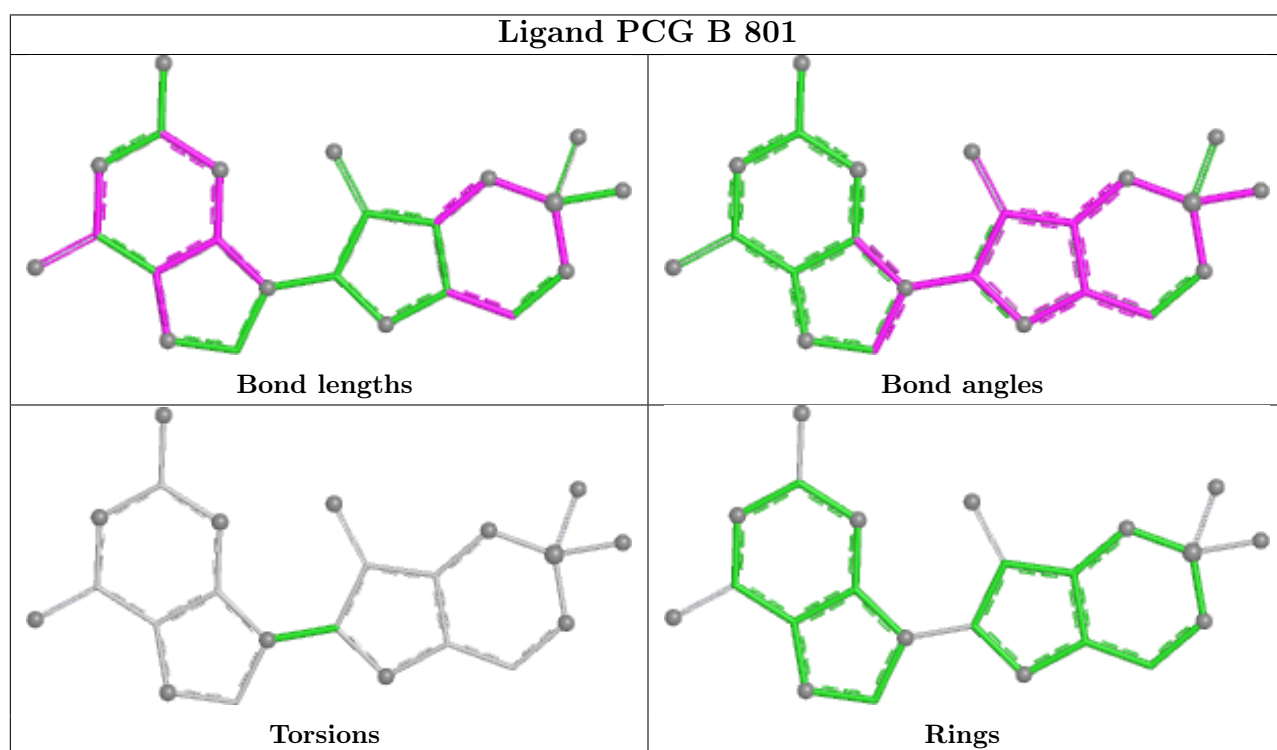
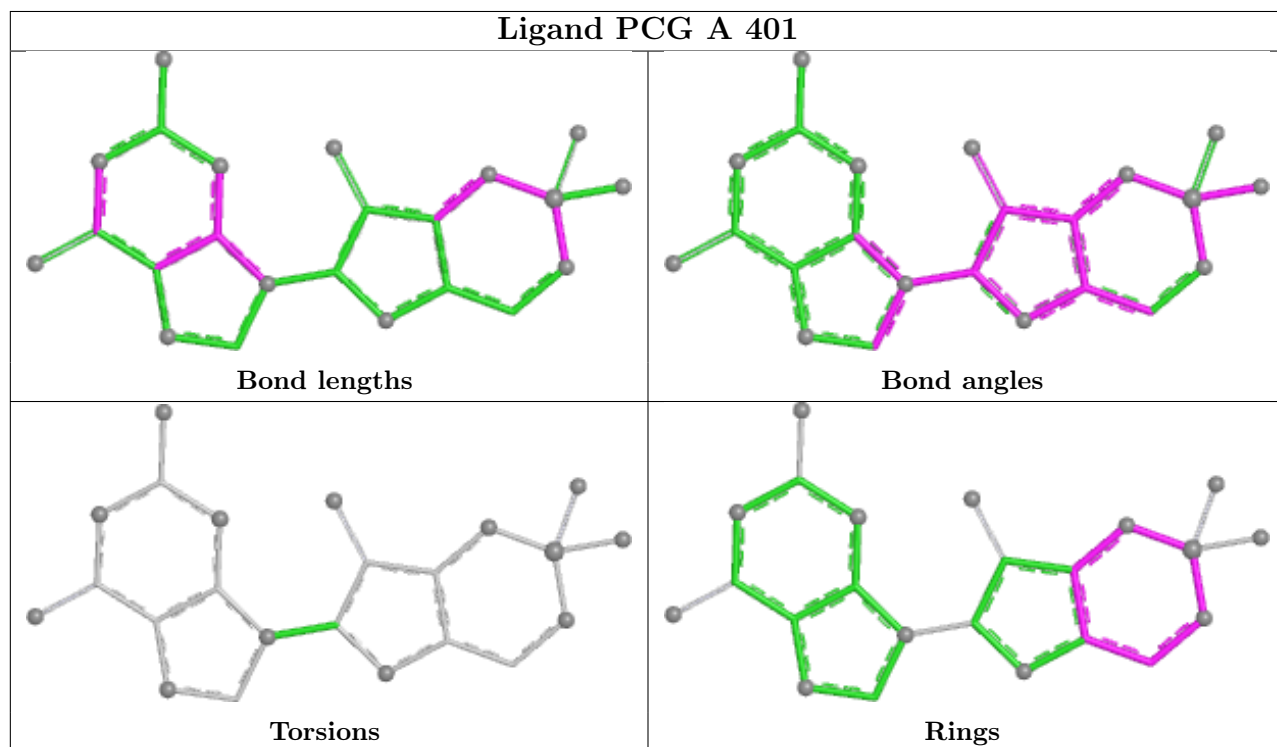
Mol	Chain	Res	Type	Atoms
2	A	401	PCG	C3'-C4'-C5'-O3'-O5'-PA

4 monomers are involved in 9 short contacts:

Mol	Chain	Res	Type	Clashes	Symm-Clashes
2	A	401	PCG	3	0
3	A	402	GOL	2	0
2	B	801	PCG	2	0
3	B	901	GOL	2	0

The following is a two-dimensional graphical depiction of Mogul quality analysis of bond lengths, bond angles, torsion angles, and ring geometry for all instances of the Ligand of Interest. In addition, ligands with molecular weight > 250 and outliers as shown on the validation Tables will also be included. For torsion angles, if less than 5% of the Mogul distribution of torsion angles is within 10 degrees of the torsion angle in question, then that torsion angle is considered an outlier.

Any bond that is central to one or more torsion angles identified as an outlier by Mogul will be highlighted in the graph. For rings, the root-mean-square deviation (RMSD) between the ring in question and similar rings identified by Mogul is calculated over all ring torsion angles. If the average RMSD is greater than 60 degrees and the minimal RMSD between the ring in question and any Mogul-identified rings is also greater than 60 degrees, then that ring is considered an outlier. The outliers are highlighted in purple. The color gray indicates Mogul did not find sufficient equivalents in the CSD to analyse the geometry.



5.7 Other polymers [i](#)

There are no such residues in this entry.

5.8 Polymer linkage issues [i](#)

There are no chain breaks in this entry.

6 Fit of model and data [i](#)

6.1 Protein, DNA and RNA chains [i](#)

In the following table, the column labelled ‘#RSRZ > 2’ contains the number (and percentage) of RSRZ outliers, followed by percent RSRZ outliers for the chain as percentile scores relative to all X-ray entries and entries of similar resolution. The OWAB column contains the minimum, median, 95th percentile and maximum values of the occupancy-weighted average B-factor per residue. The column labelled ‘Q < 0.9’ lists the number of (and percentage) of residues with an average occupancy less than 0.9.

Mol	Chain	Analysed	<RSRZ>	#RSRZ>2	OWAB(Å ²)	Q<0.9
1	A	268/288 (93%)	0.83	33 (12%) 8 7	20, 51, 94, 101	0
1	B	259/288 (89%)	0.72	18 (6%) 23 20	26, 49, 78, 95	0
All	All	527/576 (91%)	0.78	51 (9%) 13 11	20, 50, 91, 101	0

The worst 5 of 51 RSRZ outliers are listed below:

Mol	Chain	Res	Type	RSRZ
1	A	343	LEU	5.6
1	A	361	SER	5.0
1	A	284	GLY	4.6
1	A	115	VAL	4.5
1	B	707	ASN	4.2

6.2 Non-standard residues in protein, DNA, RNA chains [i](#)

There are no non-standard protein/DNA/RNA residues in this entry.

6.3 Carbohydrates [i](#)

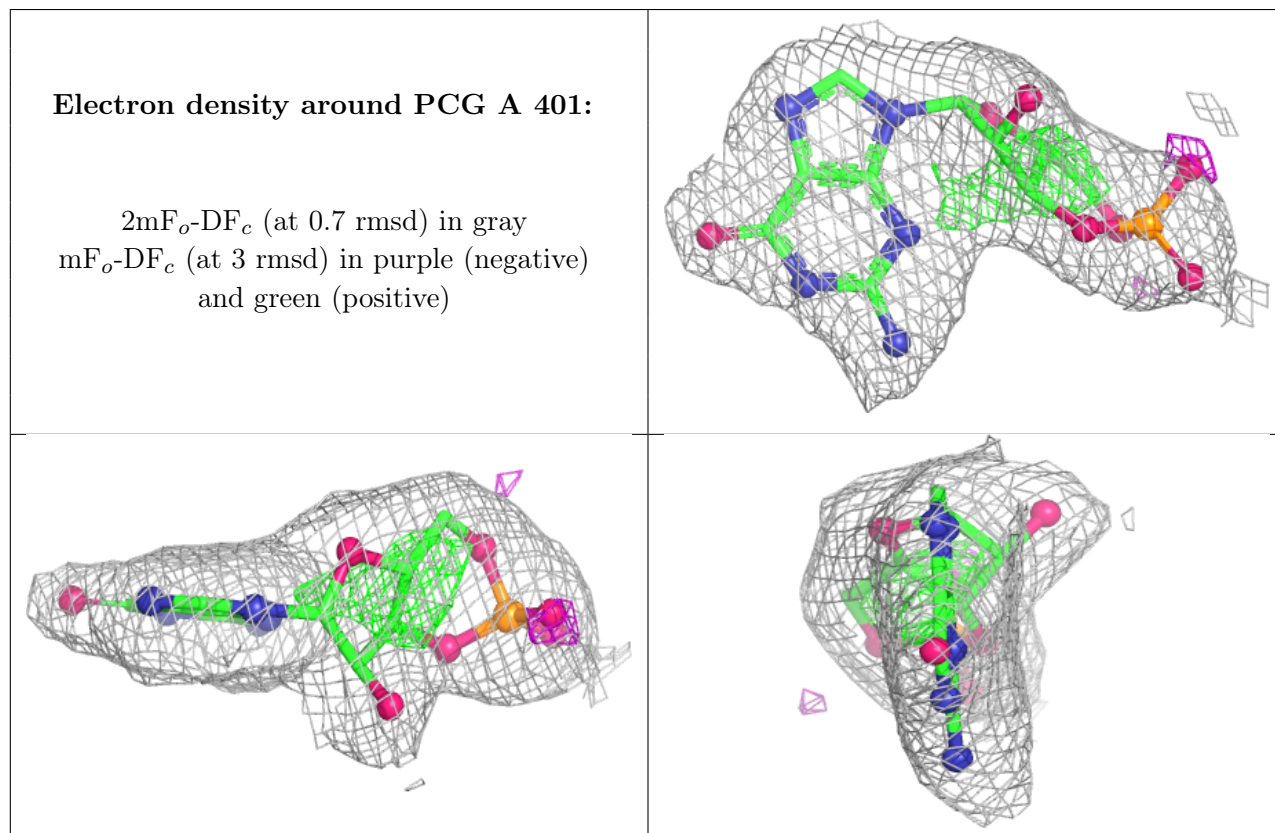
There are no oligosaccharides in this entry.

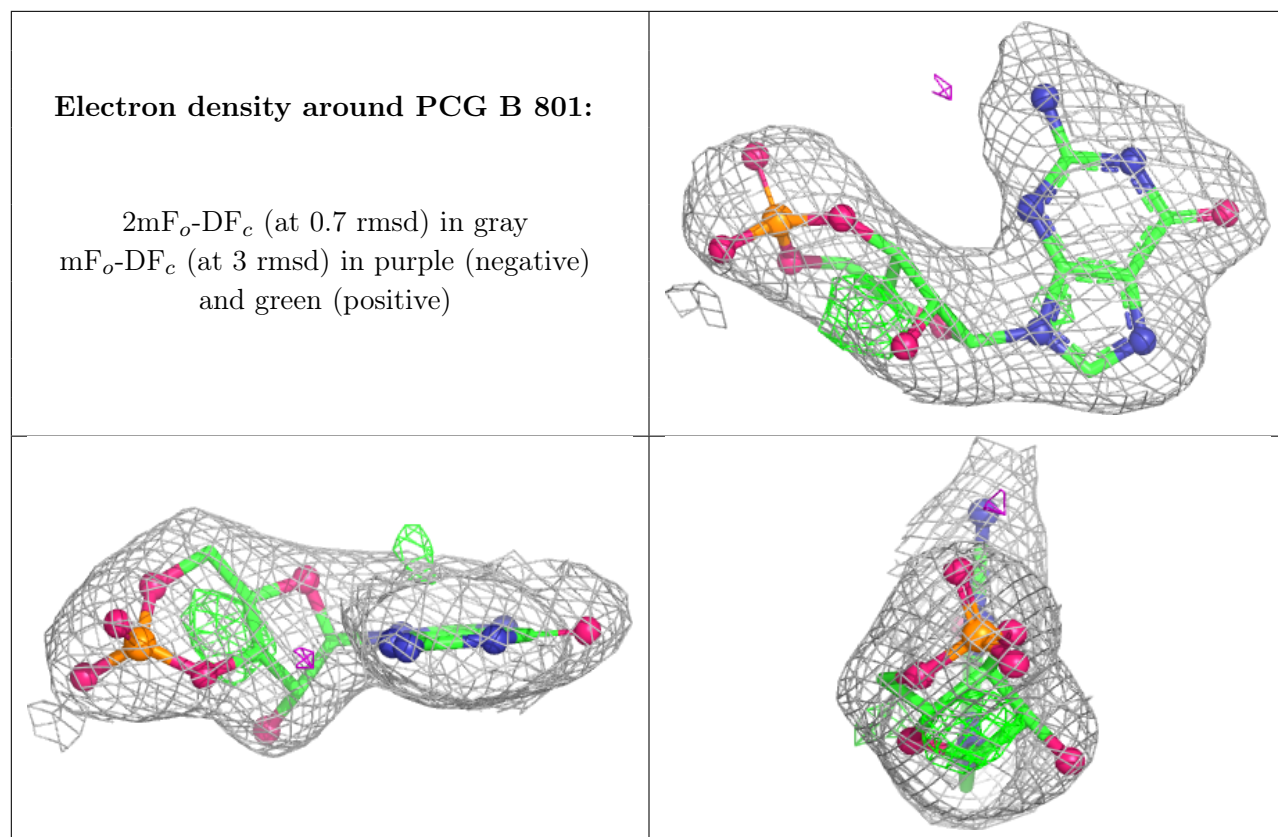
6.4 Ligands [i](#)

In the following table, the Atoms column lists the number of modelled atoms in the group and the number defined in the chemical component dictionary. The B-factors column lists the minimum, median, 95th percentile and maximum values of B factors of atoms in the group. The column labelled ‘Q < 0.9’ lists the number of atoms with occupancy less than 0.9.

Mol	Type	Chain	Res	Atoms	RSCC	RSR	B-factors(\AA^2)	Q<0.9
3	GOL	A	402	6/6	0.65	0.20	53,55,56,58	0
3	GOL	B	901	6/6	0.83	0.09	61,66,67,67	0
3	GOL	B	802	6/6	0.84	0.17	37,38,39,41	0
2	PCG	A	401	23/23	0.92	0.11	31,34,39,44	0
2	PCG	B	801	23/23	0.95	0.09	28,32,33,36	0

The following is a graphical depiction of the model fit to experimental electron density of all instances of the Ligand of Interest. In addition, ligands with molecular weight > 250 and outliers as shown on the geometry validation Tables will also be included. Each fit is shown from different orientation to approximate a three-dimensional view.





6.5 Other polymers [i](#)

There are no such residues in this entry.