



wwPDB X-ray Structure Validation Summary Report ⓘ

Mar 6, 2026 – 04:23 PM UTC

PDB ID : 8RM3 / pdb_00008rm3
Title : Crystal structure of ferrioxamine transporter FoxA
Authors : Josts, I.; Tidow, H.; Mislin, G.
Deposited on : 2024-01-04
Resolution : 2.22 Å(reported)

This is a wwPDB X-ray Structure Validation Summary Report for a publicly released PDB entry.

We welcome your comments at validation@mail.wwpdb.org

A user guide is available at

<https://www.wwpdb.org/validation/2017/XrayValidationReportHelp>

with specific help available everywhere you see the ⓘ symbol.

The types of validation reports are described at

<http://www.wwpdb.org/validation/2017/FAQs#types>.

The following versions of software and data (see [references ⓘ](#)) were used in the production of this report:

MolProbity : 4-5-2 with Phenix2.0
Mogul : 2022.3.0, CSD as543be (2022)
Xtriage (Phenix) : 2.0
EDS : 3.0
Buster-report : wwPDB partial adaption of 1.1.7 (2018)
Percentile statistics : 20250101.v01 (using entries in the PDB archive January 1st 2025)
CCP4 : 9.0.010 (Gargrove)
Density-Fitness : 1.0.12
Ideal geometry (proteins) : Engh & Huber (2001)
Ideal geometry (DNA, RNA) : Parkinson et al. (1996)
Validation Pipeline (wwPDB-VP) : 2.49

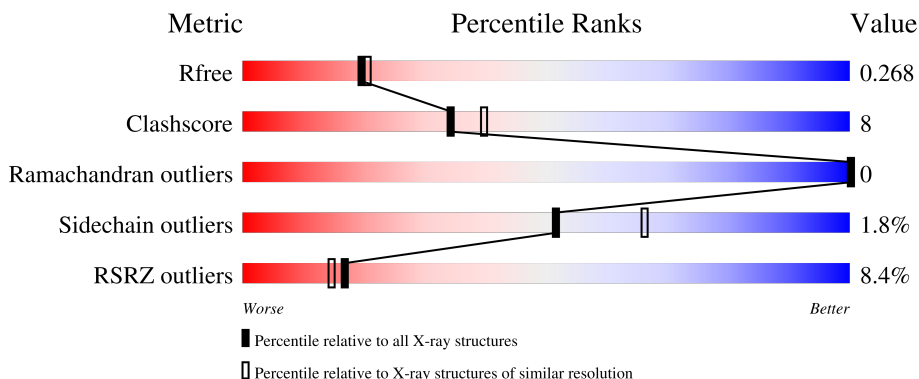
1 Overall quality at a glance

The following experimental techniques were used to determine the structure:

X-RAY DIFFRACTION

The reported resolution of this entry is 2.22 Å.

Percentile scores (ranging between 0-100) for global validation metrics of the entry are shown in the following graphic. The table shows the number of entries on which the scores are based.



Metric	Whole archive (#Entries)	Similar resolution (#Entries, resolution range(Å))
R_{free}	180053	7682 (2.24-2.20)
Clashscore	190562	8402 (2.24-2.20)
Ramachandran outliers	187476	8303 (2.24-2.20)
Sidechain outliers	187428	8304 (2.24-2.20)
RSRZ outliers	180081	7683 (2.24-2.20)

The table below summarises the geometric issues observed across the polymeric chains and their fit to the electron density. The red, orange, yellow and green segments of the lower bar indicate the fraction of residues that contain outliers for ≥ 3 , 2, 1 and 0 types of geometric quality criteria respectively. A grey segment represents the fraction of residues that are not modelled. The numeric value for each fraction is indicated below the corresponding segment, with a dot representing fractions $\leq 5\%$. The upper red bar (where present) indicates the fraction of residues that have poor fit to the electron density. The numeric value is given above the bar.

Mol	Chain	Length	Quality of chain
1	A	820	

The following table lists non-polymeric compounds, carbohydrate monomers and non-standard residues in protein, DNA, RNA chains that are outliers for geometric or electron-density-fit criteria:

Mol	Type	Chain	Res	Chirality	Geometry	Clashes	Electron density
5	DMS	A	909	-	-	X	-

2 Entry composition [i](#)

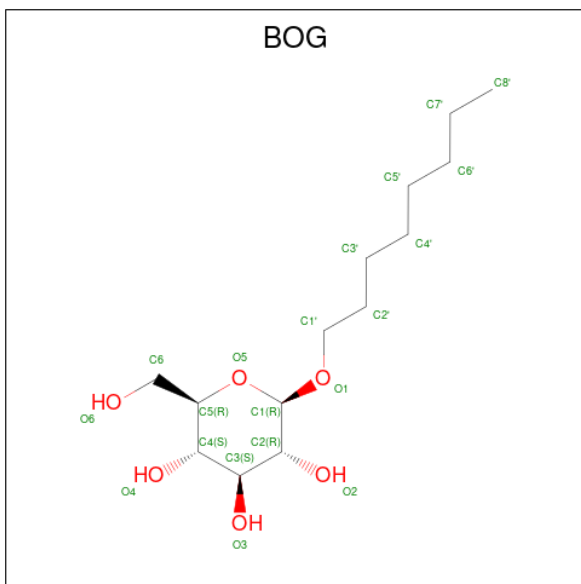
There are 10 unique types of molecules in this entry. The entry contains 5668 atoms, of which 0 are hydrogens and 0 are deuteriums.

In the tables below, the ZeroOcc column contains the number of atoms modelled with zero occupancy, the AltConf column contains the number of residues with at least one atom in alternate conformation and the Trace column contains the number of residues modelled with at most 2 atoms.

- Molecule 1 is a protein called Ferrioxamine receptor FoxA.

Mol	Chain	Residues	Atoms					ZeroOcc	AltConf	Trace
			Total	C	N	O	S			
1	A	677	5325	3345	910	1059	11	0	0	0

- Molecule 2 is octyl beta-D-glucopyranoside (CCD ID: BOG) (formula: C₁₄H₂₈O₆).



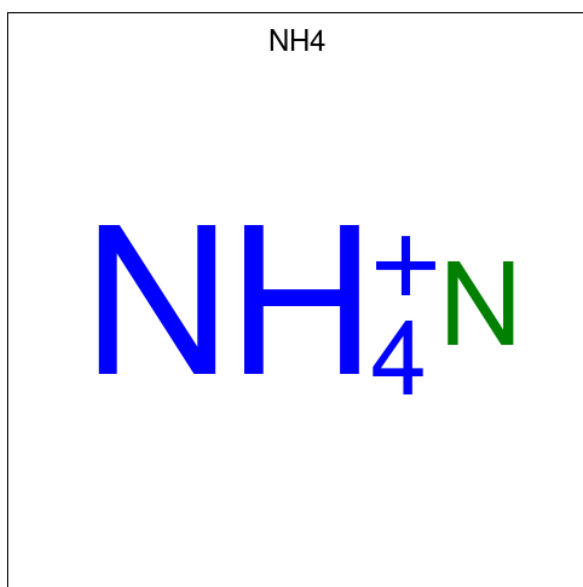
Mol	Chain	Residues	Atoms			ZeroOcc	AltConf
2	A	1	Total	C	O	0	0
			20	14	6		
2	A	1	Total	C	O	0	0
			9	8	1		
2	A	1	Total	C	O	0	0
			20	14	6		
2	A	1	Total	C	O	0	0
			20	14	6		

- Molecule 3 is GLYCEROL (CCD ID: GOL) (formula: C₃H₈O₃).



Mol	Chain	Residues	Atoms	ZeroOcc	AltConf
3	A	1	Total C O 6 3 3	0	0
3	A	1	Total C O 6 3 3	0	0
3	A	1	Total C O 6 3 3	0	0

- Molecule 4 is AMMONIUM ION (CCD ID: NH4) (formula: H₄N).



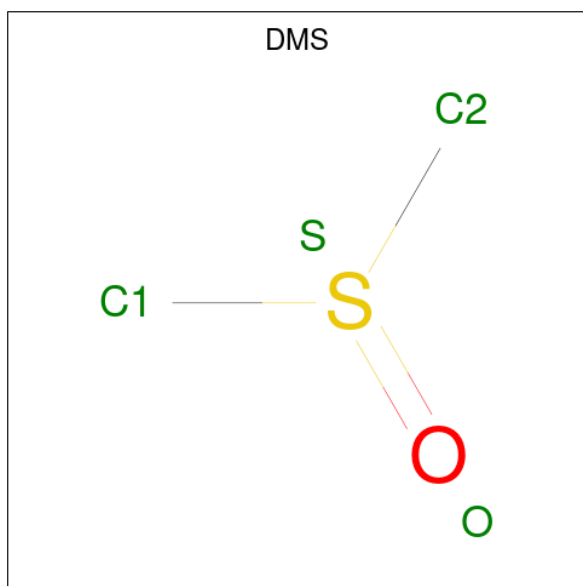
Mol	Chain	Residues	Atoms	ZeroOcc	AltConf
4	A	1	Total N 1 1	0	0

Continued on next page...

Continued from previous page...

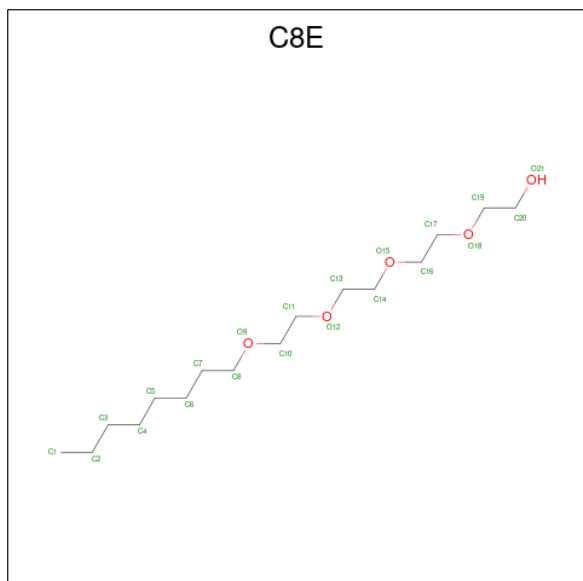
Mol	Chain	Residues	Atoms	ZeroOcc	AltConf
4	A	1	Total N 1 1	0	0

- Molecule 5 is DIMETHYL SULFOXIDE (CCD ID: DMS) (formula: C₂H₆OS).



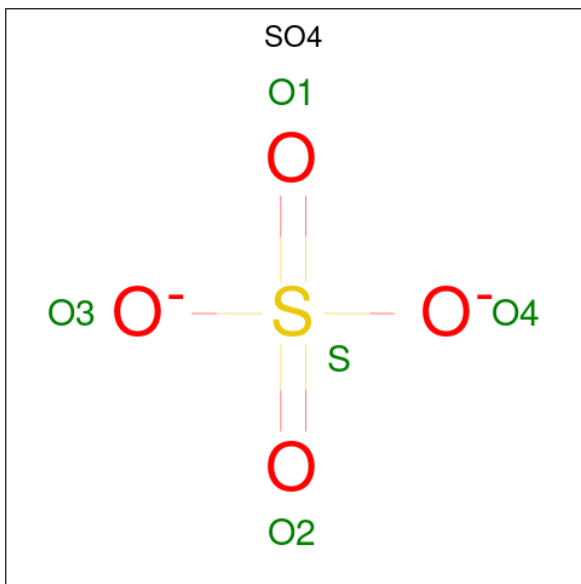
Mol	Chain	Residues	Atoms	ZeroOcc	AltConf
5	A	1	Total C O S 4 2 1 1	0	0

- Molecule 6 is (HYDROXYETHYLOXY)TRI(ETHYLOXY)OCTANE (CCD ID: C8E) (formula: C₁₆H₃₄O₅).



Mol	Chain	Residues	Atoms	ZeroOcc	AltConf
6	A	1	Total C O 10 9 1	0	0
6	A	1	Total C O 10 9 1	0	0
6	A	1	Total C O 21 16 5	0	0

- Molecule 7 is SULFATE ION (CCD ID: SO4) (formula: O₄S).

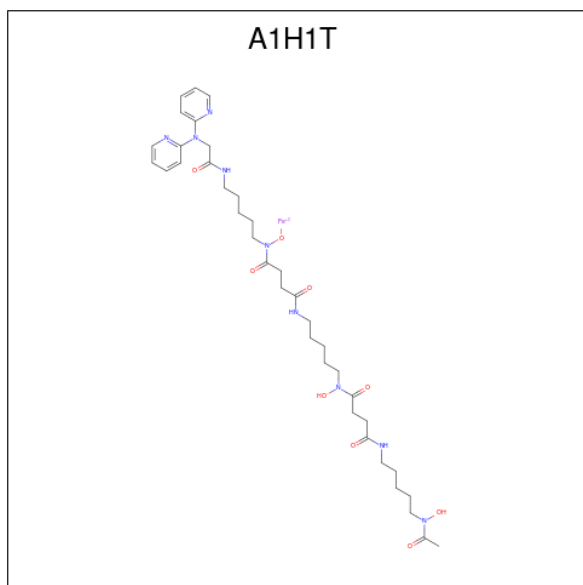


Mol	Chain	Residues	Atoms	ZeroOcc	AltConf
7	A	1	Total O S 5 4 1	0	0
7	A	1	Total O S 5 4 1	0	0
7	A	1	Total O S 5 4 1	0	0

- Molecule 8 is SODIUM ION (CCD ID: NA) (formula: Na).

Mol	Chain	Residues	Atoms	ZeroOcc	AltConf
8	A	1	Total Na 1 1	0	0

- Molecule 9 is [5-[2-(dipyridin-2-ylamino)ethanoylamino]pentyl-[4-[5-[[4-[5-[ethanoyl(oxidanyl)amino]pentylamino]-4-oxidanylidene-butanoyl]-oxidanyl-amino]pentylamino]-4-oxidanylidene-butanoyl]amino]oxyiron (CCD ID: A1H1T) (formula: C₃₇H₅₆FeN₉O₉) (labeled as "Ligand of Interest" by depositor).



Mol	Chain	Residues	Atoms					ZeroOcc	AltConf
			Total	C	Fe	N	O		
9	A	1	56	37	1	9	9	0	0

- Molecule 10 is water.

Mol	Chain	Residues	Atoms		ZeroOcc	AltConf
10	A	137	Total	O	0	0
			137	137		

4 Data and refinement statistics

Property	Value	Source
Space group	P 32 2 1	Depositor
Cell constants a, b, c, α , β , γ	94.03Å 94.03Å 178.06Å 90.00° 90.00° 120.00°	Depositor
Resolution (Å)	81.43 – 2.22 81.43 – 2.22	Depositor EDS
% Data completeness (in resolution range)	83.0 (81.43-2.22) 83.0 (81.43-2.22)	Depositor EDS
R_{merge}	0.11	Depositor
R_{sym}	(Not available)	Depositor
$\langle I/\sigma(I) \rangle$ ¹	1.29 (at 2.22Å)	Xtrriage
Refinement program	REFMAC 5.8.0419	Depositor
R, R_{free}	0.222 , 0.258 0.226 , 0.268	Depositor DCC
R_{free} test set	1820 reflections (3.98%)	wwPDB-VP
Wilson B-factor (Å ²)	53.0	Xtrriage
Anisotropy	0.033	Xtrriage
Bulk solvent k_{sol} (e/Å ³), B_{sol} (Å ²)	0.32 , 35.2	EDS
L-test for twinning ²	$\langle L \rangle = 0.50$, $\langle L^2 \rangle = 0.34$	Xtrriage
Estimated twinning fraction	0.024 for -h,-k,l	Xtrriage
F_o, F_c correlation	0.94	EDS
Total number of atoms	5668	wwPDB-VP
Average B, all atoms (Å ²)	58.0	wwPDB-VP

Xtrriage's analysis on translational NCS is as follows: *The largest off-origin peak in the Patterson function is 3.26% of the height of the origin peak. No significant pseudotranslation is detected.*

¹Intensities estimated from amplitudes.

²Theoretical values of $\langle |L| \rangle$, $\langle L^2 \rangle$ for acentric reflections are 0.5, 0.333 respectively for untwinned datasets, and 0.375, 0.2 for perfectly twinned datasets.

5 Model quality [i](#)

5.1 Standard geometry [i](#)

Bond lengths and bond angles in the following residue types are not validated in this section: BOG, A1H1T, GOL, SO4, C8E, DMS, NH4, NA

The Z score for a bond length (or angle) is the number of standard deviations the observed value is removed from the expected value. A bond length (or angle) with $|Z| > 5$ is considered an outlier worth inspection. RMSZ is the root-mean-square of all Z scores of the bond lengths (or angles).

Mol	Chain	Bond lengths		Bond angles	
		RMSZ	# $ Z > 5$	RMSZ	# $ Z > 5$
1	A	0.61	2/5451 (0.0%)	0.92	9/7397 (0.1%)

Chiral center outliers are detected by calculating the chiral volume of a chiral center and verifying if the center is modelled as a planar moiety or with the opposite hand. A planarity outlier is detected by checking planarity of atoms in a peptide group, atoms in a mainchain group or atoms of a sidechain that are expected to be planar.

Mol	Chain	#Chirality outliers	#Planarity outliers
1	A	0	6

All (2) bond length outliers are listed below:

Mol	Chain	Res	Type	Atoms	Z	Observed(Å)	Ideal(Å)
1	A	614	ALA	N-CA	-6.34	1.38	1.46
1	A	613	ASP	CA-C	-6.08	1.44	1.52

The worst 5 of 9 bond angle outliers are listed below:

Mol	Chain	Res	Type	Atoms	Z	Observed($^{\circ}$)	Ideal($^{\circ}$)
1	A	613	ASP	CA-C-N	-12.89	103.64	126.45
1	A	613	ASP	C-N-CA	-12.89	103.64	126.45
1	A	615	SER	N-CA-C	-12.13	98.76	113.19
1	A	613	ASP	O-C-N	9.17	134.63	122.43
1	A	389	ARG	N-CA-C	-7.64	104.10	113.19

There are no chirality outliers.

5 of 6 planarity outliers are listed below:

Mol	Chain	Res	Type	Group
1	A	389	ARG	Sidechain

Continued on next page...

Continued from previous page...

Mol	Chain	Res	Type	Group
1	A	393	ARG	Sidechain
1	A	419	ARG	Sidechain
1	A	496	ARG	Sidechain
1	A	534	ARG	Sidechain

5.2 Too-close contacts [i](#)

In the following table, the Non-H and H(model) columns list the number of non-hydrogen atoms and hydrogen atoms in the chain respectively. The H(added) column lists the number of hydrogen atoms added and optimized by MolProbity. The Clashes column lists the number of clashes within the asymmetric unit, whereas Symm-Clashes lists symmetry-related clashes.

Mol	Chain	Non-H	H(model)	H(added)	Clashes	Symm-Clashes
1	A	5325	0	5038	81	0
2	A	69	0	101	1	0
3	A	18	0	24	1	0
4	A	2	0	0	0	0
5	A	4	0	6	4	0
6	A	41	0	68	2	0
7	A	15	0	0	0	0
8	A	1	0	0	0	0
9	A	56	0	0	0	0
10	A	137	0	0	1	0
All	All	5668	0	5237	82	0

The all-atom clashscore is defined as the number of clashes found per 1000 atoms (including hydrogen atoms). The all-atom clashscore for this structure is 8.

The worst 5 of 82 close contacts within the same asymmetric unit are listed below, sorted by their clash magnitude.

Atom-1	Atom-2	Interatomic distance (Å)	Clash overlap (Å)
1:A:613:ASP:O	1:A:614:ALA:HB3	1.70	0.90
1:A:197:GLN:O	1:A:200:ARG:NE	2.12	0.81
1:A:612:SER:C	1:A:614:ALA:H	1.92	0.76
1:A:612:SER:C	1:A:614:ALA:N	2.41	0.75
1:A:385:HIS:CE1	1:A:389:ARG:HG3	2.25	0.71

There are no symmetry-related clashes.

5.3 Torsion angles [i](#)

5.3.1 Protein backbone [i](#)

In the following table, the Percentiles column shows the percent Ramachandran outliers of the chain as a percentile score with respect to all X-ray entries followed by that with respect to entries of similar resolution.

The Analysed column shows the number of residues for which the backbone conformation was analysed, and the total number of residues.

Mol	Chain	Analysed	Favoured	Allowed	Outliers	Percentiles
1	A	675/820 (82%)	649 (96%)	26 (4%)	0	100 100

There are no Ramachandran outliers to report.

5.3.2 Protein sidechains [i](#)

In the following table, the Percentiles column shows the percent sidechain outliers of the chain as a percentile score with respect to all X-ray entries followed by that with respect to entries of similar resolution.

The Analysed column shows the number of residues for which the sidechain conformation was analysed, and the total number of residues.

Mol	Chain	Analysed	Rotameric	Outliers	Percentiles
1	A	566/667 (85%)	556 (98%)	10 (2%)	51 66

5 of 10 residues with a non-rotameric sidechain are listed below:

Mol	Chain	Res	Type
1	A	692	SER
1	A	737	SER
1	A	748	THR
1	A	593	ASP
1	A	612	SER

Sometimes sidechains can be flipped to improve hydrogen bonding and reduce clashes. All (5) such sidechains are listed below:

Mol	Chain	Res	Type
1	A	370	ASN
1	A	415	GLN
1	A	634	GLN

Continued on next page...

Continued from previous page...

Mol	Chain	Res	Type
1	A	651	GLN
1	A	710	HIS

5.3.3 RNA [i](#)

There are no RNA molecules in this entry.

5.4 Non-standard residues in protein, DNA, RNA chains [i](#)

There are no non-standard protein/DNA/RNA residues in this entry.

5.5 Carbohydrates [i](#)

There are no oligosaccharides in this entry.

5.6 Ligand geometry [i](#)

Of 18 ligands modelled in this entry, 2 are modelled with single atom and 1 is monoatomic - leaving 15 for Mogul analysis.

In the following table, the Counts columns list the number of bonds (or angles) for which Mogul statistics could be retrieved, the number of bonds (or angles) that are observed in the model and the number of bonds (or angles) that are defined in the Chemical Component Dictionary. The Link column lists molecule types, if any, to which the group is linked. The Z score for a bond length (or angle) is the number of standard deviations the observed value is removed from the expected value. A bond length (or angle) with $|Z| > 2$ is considered an outlier worth inspection. RMSZ is the root-mean-square of all Z scores of the bond lengths (or angles).

Mol	Type	Chain	Res	Link	Bond lengths			Bond angles		
					Counts	RMSZ	$\# Z > 2$	Counts	RMSZ	$\# Z > 2$
6	C8E	A	913	-	20,20,20	0.39	0	19,19,19	0.35	0
2	BOG	A	903	-	8,8,20	0.27	0	7,7,25	0.31	0
6	C8E	A	911	-	9,9,20	0.39	0	8,8,19	0.25	0
3	GOL	A	914	-	5,5,5	0.51	0	5,5,5	0.75	0
7	SO4	A	918	-	4,4,4	0.79	0	6,6,6	0.22	0
2	BOG	A	912	-	20,20,20	0.59	0	25,25,25	1.24	3 (12%)
9	A1H1T	A	901	-	54,57,57	2.14	11 (20%)	57,70,70	1.56	12 (21%)
6	C8E	A	910	-	9,9,20	0.40	0	8,8,19	0.23	0
5	DMS	A	909	-	3,3,3	0.84	0	3,3,3	0.62	0
2	BOG	A	908	-	20,20,20	0.45	0	25,25,25	0.62	0

Mol	Type	Chain	Res	Link	Bond lengths			Bond angles		
					Counts	RMSZ	# Z > 2	Counts	RMSZ	# Z > 2
2	BOG	A	902	-	20,20,20	0.45	0	25,25,25	0.49	0
3	GOL	A	905	-	5,5,5	0.24	0	5,5,5	0.40	0
7	SO4	A	917	-	4,4,4	0.56	0	6,6,6	0.18	0
7	SO4	A	916	-	4,4,4	0.63	0	6,6,6	0.35	0
3	GOL	A	904	-	5,5,5	0.32	0	5,5,5	0.36	0

In the following table, the Chirals column lists the number of chiral outliers, the number of chiral centers analysed, the number of these observed in the model and the number defined in the Chemical Component Dictionary. Similar counts are reported in the Torsion and Rings columns. '-' means no outliers of that kind were identified.

Mol	Type	Chain	Res	Link	Chirals	Torsions	Rings
6	C8E	A	913	-	-	12/18/18/18	-
2	BOG	A	903	-	-	4/6/6/31	-
6	C8E	A	911	-	-	5/7/7/18	-
3	GOL	A	914	-	-	4/4/4/4	-
9	A1H1T	A	901	-	-	27/60/63/63	0/2/2/2
2	BOG	A	912	-	-	9/11/31/31	0/1/1/1
6	C8E	A	910	-	-	4/7/7/18	-
2	BOG	A	908	-	-	8/11/31/31	0/1/1/1
2	BOG	A	902	-	-	8/11/31/31	0/1/1/1
3	GOL	A	905	-	-	2/4/4/4	-
3	GOL	A	904	-	-	4/4/4/4	-

The worst 5 of 11 bond length outliers are listed below:

Mol	Chain	Res	Type	Atoms	Z	Observed(Å)	Ideal(Å)
9	A	901	A1H1T	C14-N03	7.57	1.45	1.35
9	A	901	A1H1T	C05-N01	7.11	1.45	1.35
9	A	901	A1H1T	C17-N04	5.39	1.46	1.33
9	A	901	A1H1T	C25-N06	5.03	1.45	1.33
9	A	901	A1H1T	C08-N02	5.00	1.45	1.33

The worst 5 of 15 bond angle outliers are listed below:

Mol	Chain	Res	Type	Atoms	Z	Observed(°)	Ideal(°)
2	A	912	BOG	O5-C1-C2	3.89	118.36	110.37
9	A	901	A1H1T	C29-N07-C28	-3.58	116.38	122.44
9	A	901	A1H1T	C37-N09-C29	3.52	121.92	116.81

Continued on next page...

Continued from previous page...

Mol	Chain	Res	Type	Atoms	Z	Observed(°)	Ideal(°)
9	A	901	A1H1T	C30-N08-C28	3.45	121.82	116.81
2	A	912	BOG	C1-O5-C5	2.81	119.20	113.72

There are no chirality outliers.

5 of 87 torsion outliers are listed below:

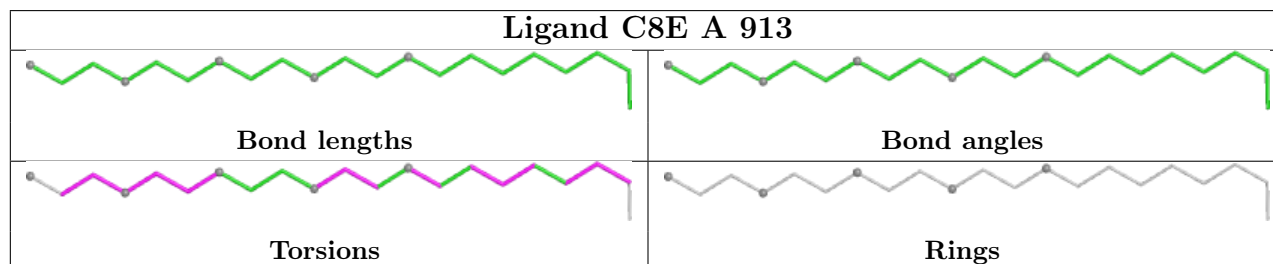
Mol	Chain	Res	Type	Atoms
2	A	902	BOG	O5-C1-O1-C1'
2	A	912	BOG	C2-C1-O1-C1'
2	A	912	BOG	O5-C1-O1-C1'
2	A	912	BOG	C2'-C1'-O1-C1
3	A	904	GOL	O1-C1-C2-C3

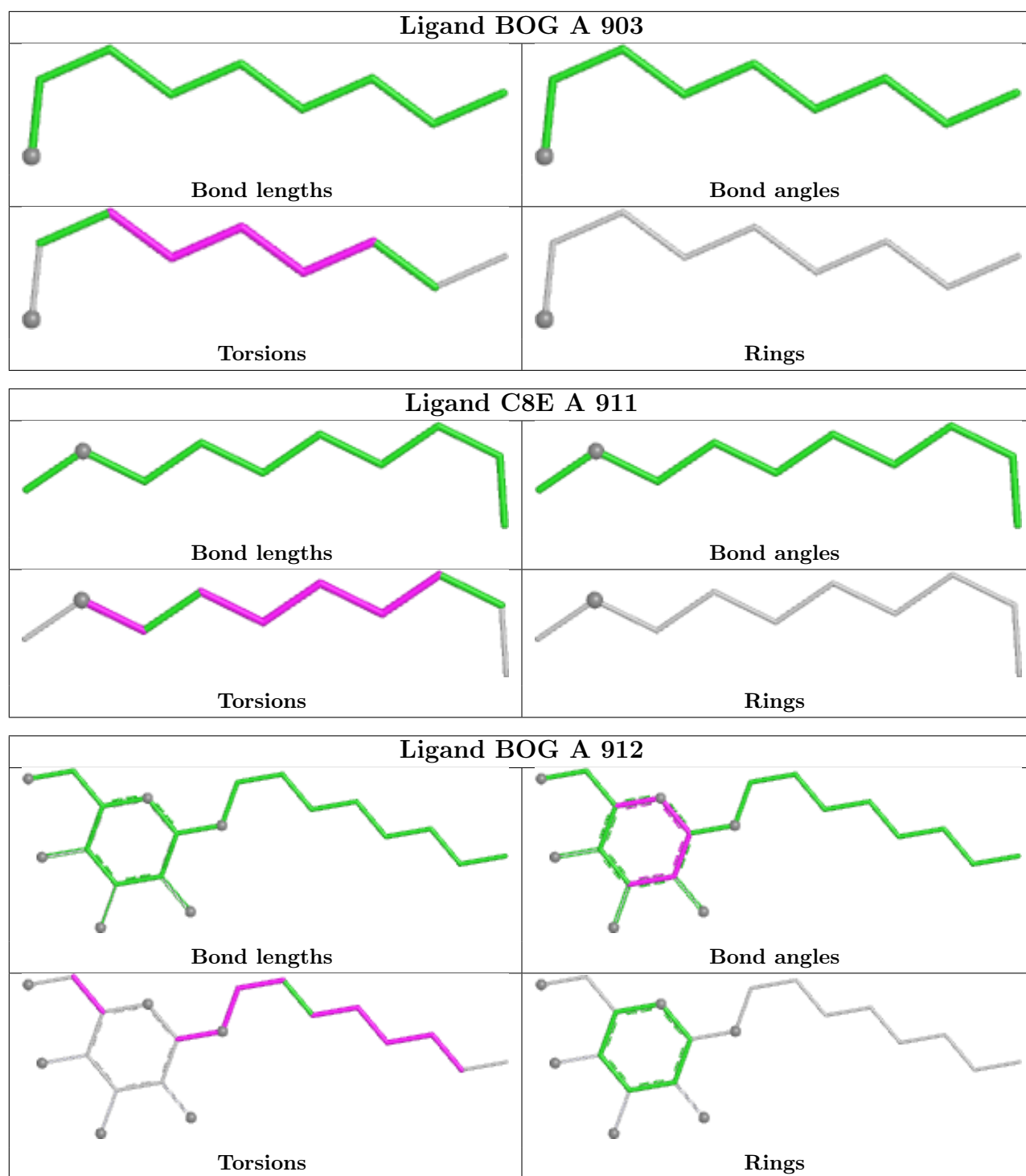
There are no ring outliers.

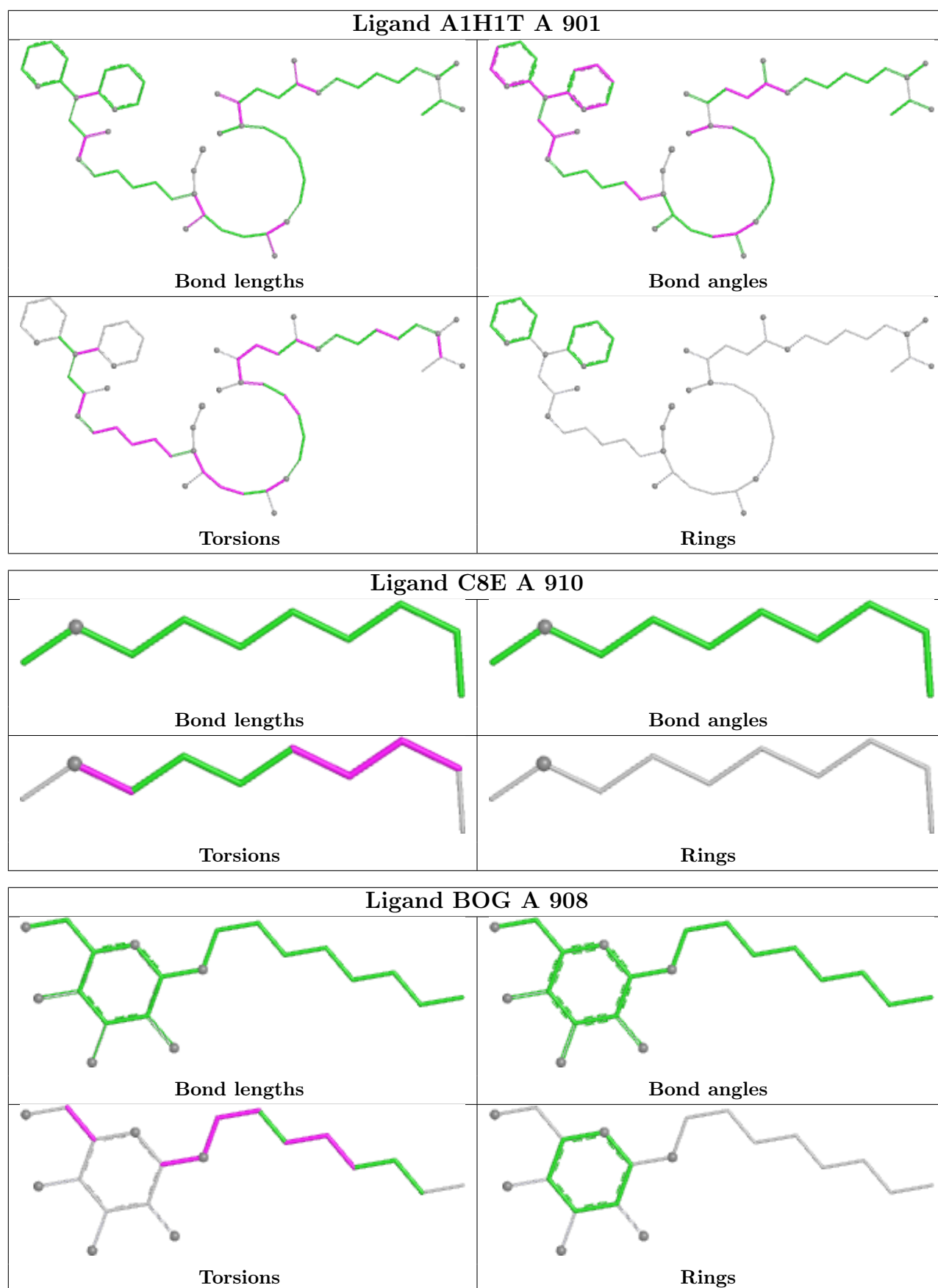
4 monomers are involved in 8 short contacts:

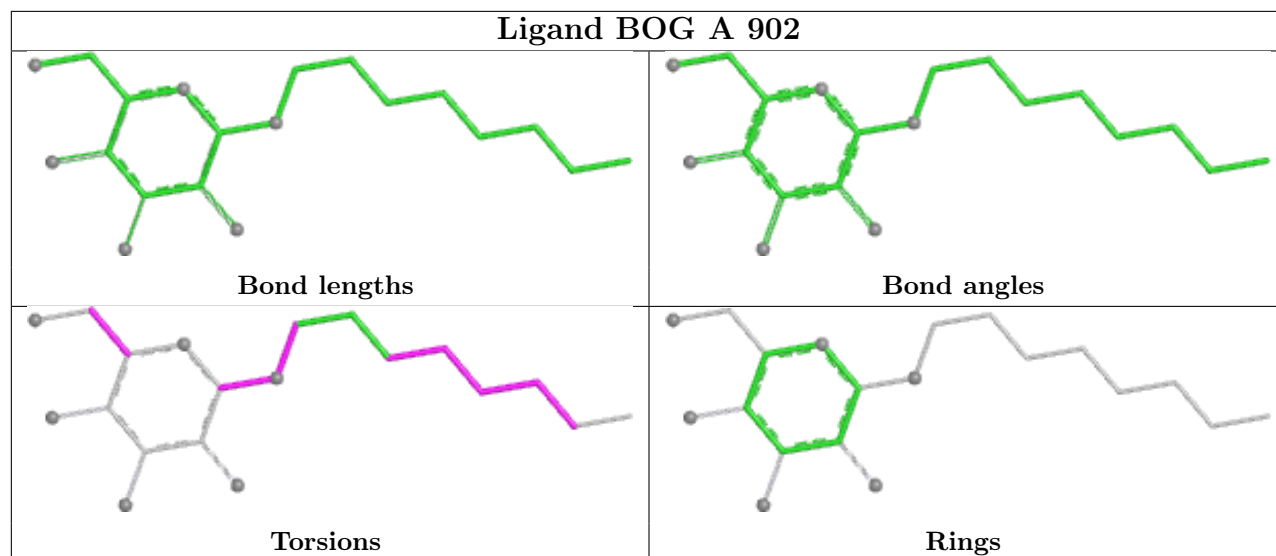
Mol	Chain	Res	Type	Clashes	Symm-Clashes
6	A	913	C8E	2	0
3	A	914	GOL	1	0
5	A	909	DMS	4	0
2	A	902	BOG	1	0

The following is a two-dimensional graphical depiction of Mogul quality analysis of bond lengths, bond angles, torsion angles, and ring geometry for all instances of the Ligand of Interest. In addition, ligands with molecular weight > 250 and outliers as shown on the validation Tables will also be included. For torsion angles, if less than 5% of the Mogul distribution of torsion angles is within 10 degrees of the torsion angle in question, then that torsion angle is considered an outlier. Any bond that is central to one or more torsion angles identified as an outlier by Mogul will be highlighted in the graph. For rings, the root-mean-square deviation (RMSD) between the ring in question and similar rings identified by Mogul is calculated over all ring torsion angles. If the average RMSD is greater than 60 degrees and the minimal RMSD between the ring in question and any Mogul-identified rings is also greater than 60 degrees, then that ring is considered an outlier. The outliers are highlighted in purple. The color gray indicates Mogul did not find sufficient equivalents in the CSD to analyse the geometry.









5.7 Other polymers [i](#)

There are no such residues in this entry.

5.8 Polymer linkage issues [i](#)

There are no chain breaks in this entry.

6 Fit of model and data [i](#)

6.1 Protein, DNA and RNA chains [i](#)

In the following table, the column labelled ‘#RSRZ> 2’ contains the number (and percentage) of RSRZ outliers, followed by percent RSRZ outliers for the chain as percentile scores relative to all X-ray entries and entries of similar resolution. The OWAB column contains the minimum, median, 95th percentile and maximum values of the occupancy-weighted average B-factor per residue. The column labelled ‘Q< 0.9’ lists the number of (and percentage) of residues with an average occupancy less than 0.9.

Mol	Chain	Analysed	<RSRZ>	#RSRZ>2	OWAB(Å ²)	Q<0.9
1	A	677/820 (82%)	0.56	57 (8%) 17 15	38, 55, 90, 125	0

The worst 5 of 57 RSRZ outliers are listed below:

Mol	Chain	Res	Type	RSRZ
1	A	398	GLY	5.5
1	A	614	ALA	5.4
1	A	391	ILE	4.5
1	A	389	ARG	4.2
1	A	144	VAL	4.2

6.2 Non-standard residues in protein, DNA, RNA chains [i](#)

There are no non-standard protein/DNA/RNA residues in this entry.

6.3 Carbohydrates [i](#)

There are no oligosaccharides in this entry.

6.4 Ligands [i](#)

In the following table, the Atoms column lists the number of modelled atoms in the group and the number defined in the chemical component dictionary. The B-factors column lists the minimum, median, 95th percentile and maximum values of B factors of atoms in the group. The column labelled ‘Q< 0.9’ lists the number of atoms with occupancy less than 0.9.

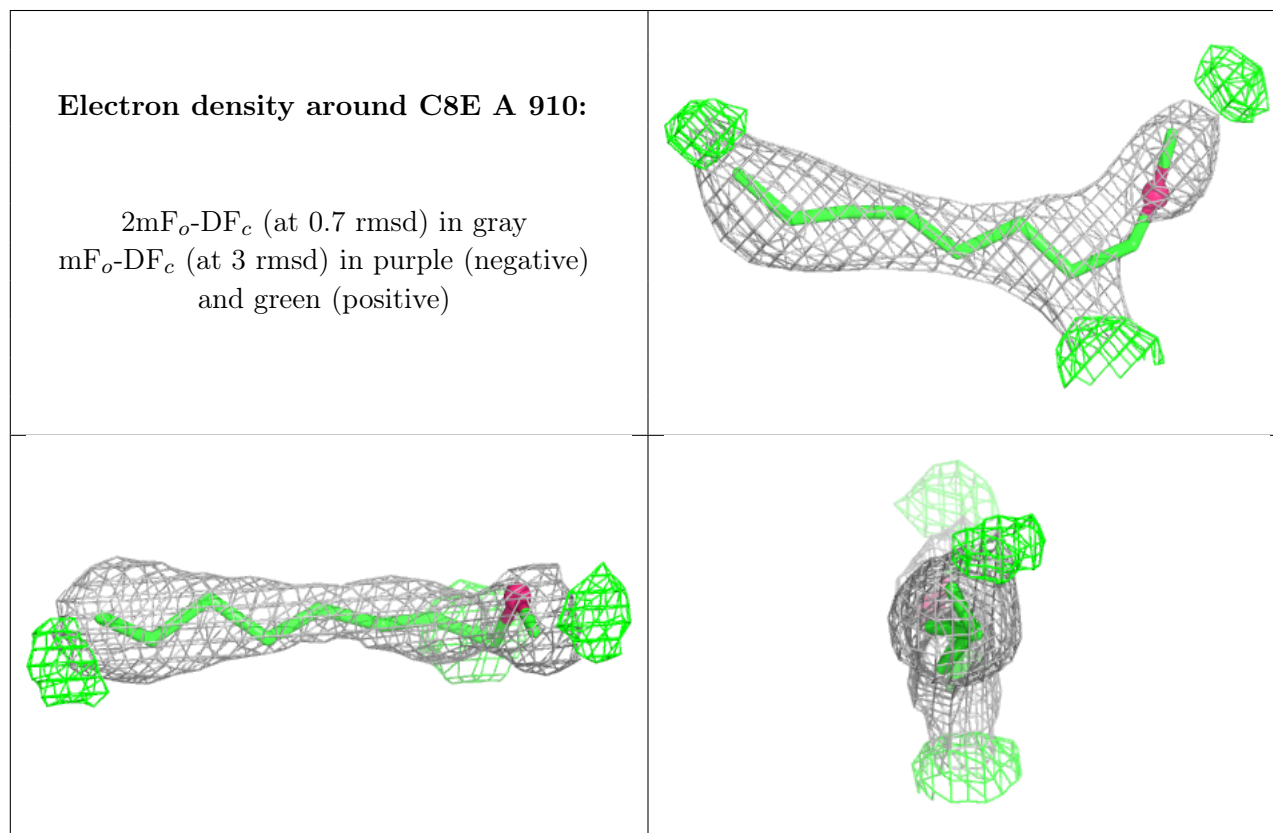
Mol	Type	Chain	Res	Atoms	RSCC	RSR	B-factors(Å ²)	Q<0.9
4	NH4	A	907	1/1	0.70	0.28	50,50,50,50	0
6	C8E	A	910	10/21	0.70	0.28	60,63,72,73	0

Continued on next page...

Continued from previous page...

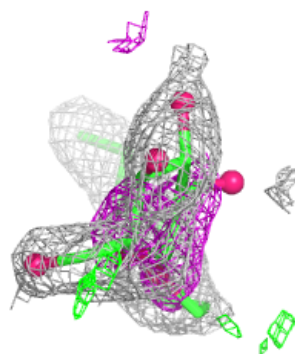
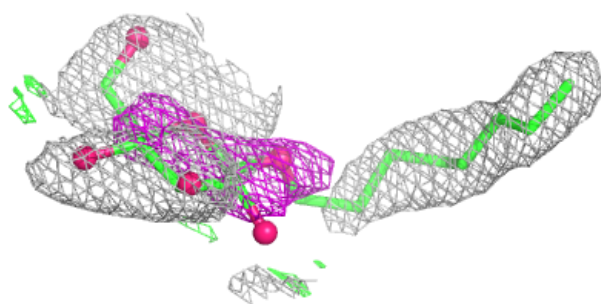
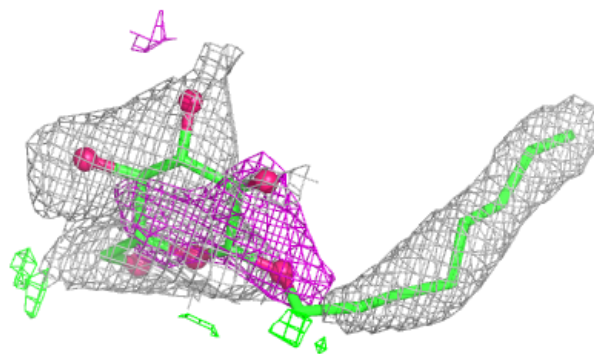
Mol	Type	Chain	Res	Atoms	RSCC	RSR	B-factors(\AA^2)	Q<0.9
2	BOG	A	908	20/20	0.72	0.21	65,70,78,78	0
2	BOG	A	902	20/20	0.73	0.20	68,73,78,79	0
3	GOL	A	904	6/6	0.78	0.16	54,55,56,56	0
2	BOG	A	912	20/20	0.79	0.19	77,86,94,96	0
3	GOL	A	905	6/6	0.82	0.18	66,67,68,69	0
3	GOL	A	914	6/6	0.82	0.15	48,50,54,54	0
6	C8E	A	913	21/21	0.83	0.18	65,71,83,84	0
4	NH4	A	906	1/1	0.85	0.26	54,54,54,54	0
7	SO4	A	918	5/5	0.85	0.20	48,49,52,55	0
9	A1H1T	A	901	56/56	0.85	0.20	42,57,67,68	0
7	SO4	A	917	5/5	0.86	0.20	51,52,55,57	0
6	C8E	A	911	10/21	0.86	0.22	69,72,78,79	0
5	DMS	A	909	4/4	0.86	0.20	52,58,59,59	0
7	SO4	A	916	5/5	0.87	0.16	48,52,55,56	0
2	BOG	A	903	9/20	0.88	0.15	57,58,63,65	0
8	NA	A	919	1/1	0.94	0.18	51,51,51,51	0

The following is a graphical depiction of the model fit to experimental electron density of all instances of the Ligand of Interest. In addition, ligands with molecular weight > 250 and outliers as shown on the geometry validation Tables will also be included. Each fit is shown from different orientation to approximate a three-dimensional view.

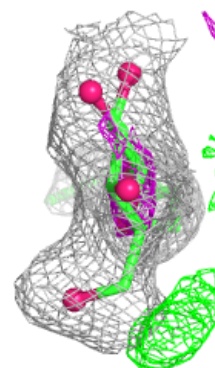
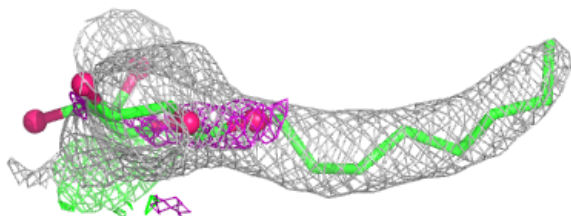
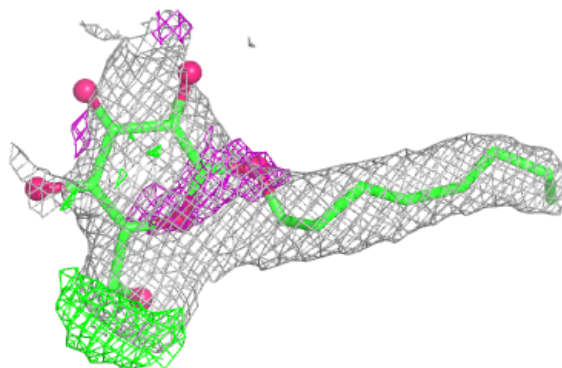


Electron density around BOG A 908:

$2mF_o-DF_c$ (at 0.7 rmsd) in gray
 mF_o-DF_c (at 3 rmsd) in purple (negative)
and green (positive)

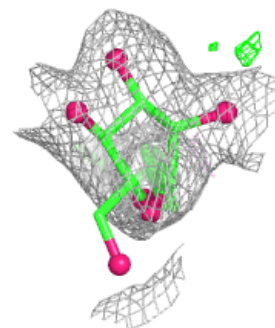
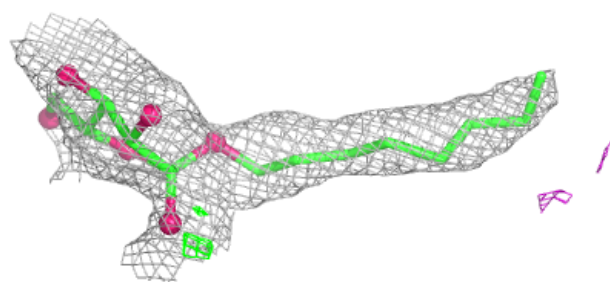
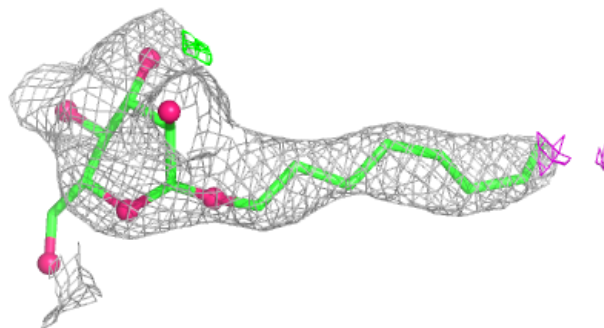
**Electron density around BOG A 902:**

$2mF_o-DF_c$ (at 0.7 rmsd) in gray
 mF_o-DF_c (at 3 rmsd) in purple (negative)
and green (positive)

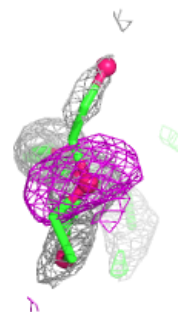
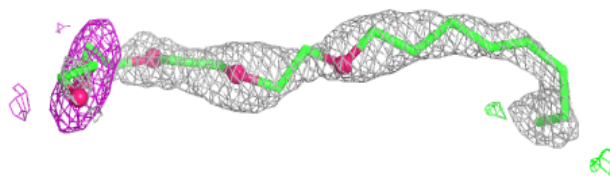
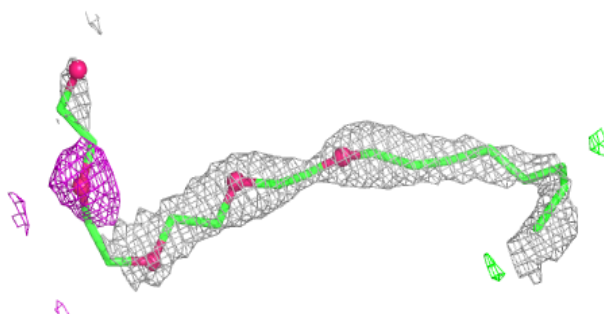


Electron density around BOG A 912:

$2mF_o-DF_c$ (at 0.7 rmsd) in gray
 mF_o-DF_c (at 3 rmsd) in purple (negative)
and green (positive)

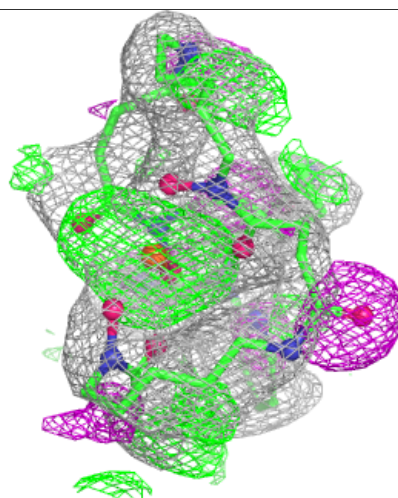
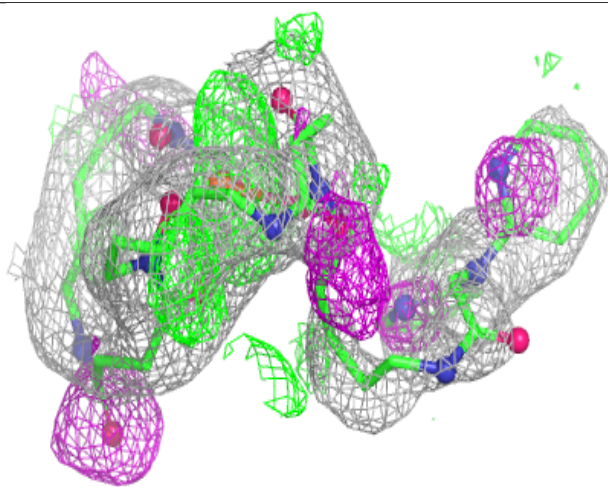
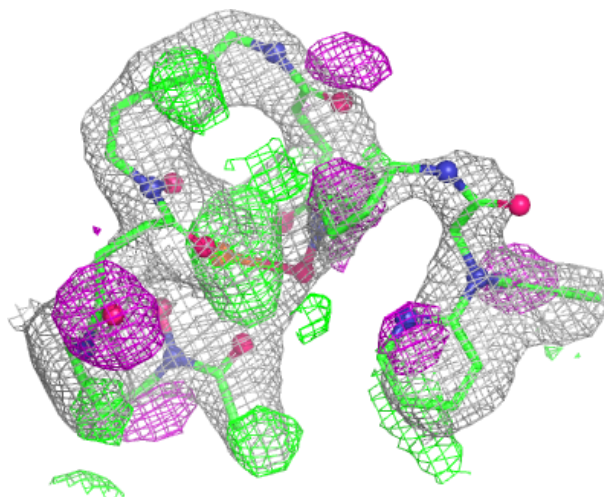
**Electron density around C8E A 913:**

$2mF_o-DF_c$ (at 0.7 rmsd) in gray
 mF_o-DF_c (at 3 rmsd) in purple (negative)
and green (positive)



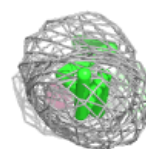
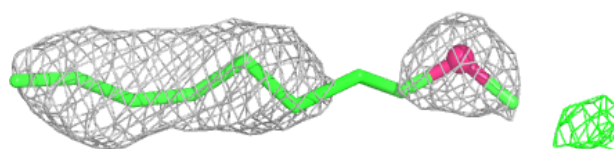
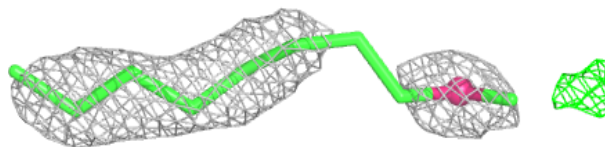
Electron density around A1H1T A 901:

$2mF_o-DF_c$ (at 0.7 rmsd) in gray
 mF_o-DF_c (at 3 rmsd) in purple (negative)
and green (positive)

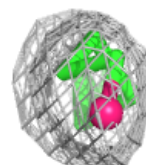
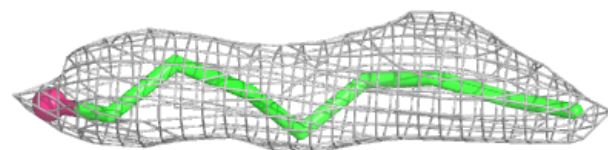
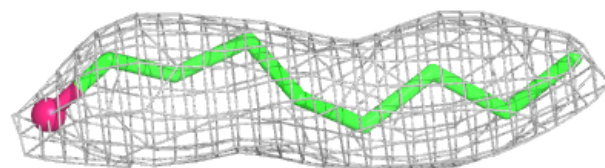


Electron density around C8E A 911:

$2mF_o-DF_c$ (at 0.7 rmsd) in gray
 mF_o-DF_c (at 3 rmsd) in purple (negative)
and green (positive)

**Electron density around BOG A 903:**

$2mF_o-DF_c$ (at 0.7 rmsd) in gray
 mF_o-DF_c (at 3 rmsd) in purple (negative)
and green (positive)



6.5 Other polymers [i](#)

There are no such residues in this entry.