



# Full wwPDB X-ray Structure Validation Report ⓘ

Mar 6, 2026 – 06:41 AM UTC

PDB ID : 1RTL / pdb\_00001rtl  
Title : CRYSTAL STRUCTURE OF HCV NS3 PROTEASE DOMAIN: NS4A PEPTIDE COMPLEX WITH COVALENTLY BOUND PYRROLIDINE-5,5-TRIANSLACTAM INHIBITOR  
Authors : Skarzynski, T.; Somers, D.O.N.  
Deposited on : 2003-12-10  
Resolution : 2.75 Å(reported)

This is a Full wwPDB X-ray Structure Validation Report for a publicly released PDB entry.

We welcome your comments at [validation@mail.wwpdb.org](mailto:validation@mail.wwpdb.org)

A user guide is available at

<https://www.wwpdb.org/validation/2017/XrayValidationReportHelp>

with specific help available everywhere you see the ⓘ symbol.

The types of validation reports are described at

<http://www.wwpdb.org/validation/2017/FAQs#types>.

---

The following versions of software and data (see [references ⓘ](#)) were used in the production of this report:

MolProbity : 4-5-2 with Phenix2.0  
Mogul : 2022.3.0, CSD as543be (2022)  
Xtriage (Phenix) : 2.0  
EDS : 3.0  
Buster-report : wwPDB partial adaption of 1.1.7 (2018)  
Percentile statistics : 20250101.v01 (using entries in the PDB archive January 1st 2025)  
CCP4 : 9.0.010 (Gargrove)  
Density-Fitness : 1.0.12  
Ideal geometry (proteins) : Engh & Huber (2001)  
Ideal geometry (DNA, RNA) : Parkinson et al. (1996)  
Validation Pipeline (wwPDB-VP) : 2.49

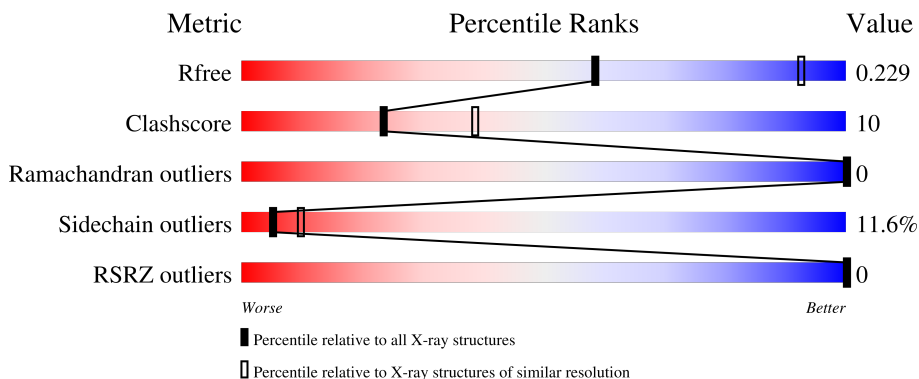
# 1 Overall quality at a glance

The following experimental techniques were used to determine the structure:

*X-RAY DIFFRACTION*

The reported resolution of this entry is 2.75 Å.

Percentile scores (ranging between 0-100) for global validation metrics of the entry are shown in the following graphic. The table shows the number of entries on which the scores are based.



Metric	Whole archive (#Entries)	Similar resolution (#Entries, resolution range(Å))
$R_{free}$	180053	1009 (2.76-2.76)
Clashscore	190562	1044 (2.76-2.76)
Ramachandran outliers	187476	1024 (2.76-2.76)
Sidechain outliers	187428	1024 (2.76-2.76)
RSRZ outliers	180081	1009 (2.76-2.76)

The table below summarises the geometric issues observed across the polymeric chains and their fit to the electron density. The red, orange, yellow and green segments of the lower bar indicate the fraction of residues that contain outliers for  $\geq 3$ , 2, 1 and 0 types of geometric quality criteria respectively. A grey segment represents the fraction of residues that are not modelled. The numeric value for each fraction is indicated below the corresponding segment, with a dot representing fractions  $\leq 5\%$ . The upper red bar (where present) indicates the fraction of residues that have poor fit to the electron density. The numeric value is given above the bar.

Mol	Chain	Length	Quality of chain
1	A	200	 66% 20% 10%
1	B	200	 52% 22% 24%
2	C	23	 70% 22% 9%
2	D	23	 61% 9% 30%

## 2 Entry composition i

There are 5 unique types of molecules in this entry. The entry contains 2868 atoms, of which 0 are hydrogens and 0 are deuteriums.

In the tables below, the ZeroOcc column contains the number of atoms modelled with zero occupancy, the AltConf column contains the number of residues with at least one atom in alternate conformation and the Trace column contains the number of residues modelled with at most 2 atoms.

- Molecule 1 is a protein called NS3 protease/helicase.

Mol	Chain	Residues	Atoms					ZeroOcc	AltConf	Trace
			Total	C	N	O	S			
1	A	180	1337	834	243	251	9	0	0	0
1	B	153	1138	711	206	213	8	0	0	0

There are 40 discrepancies between the modelled and reference sequences:

Chain	Residue	Modelled	Actual	Comment	Reference
A	-10	MET	-	cloning artifact	UNP Q91RS4
A	-9	ALA	-	cloning artifact	UNP Q91RS4
A	-8	SER	-	cloning artifact	UNP Q91RS4
A	-7	MET	-	cloning artifact	UNP Q91RS4
A	-6	THR	-	cloning artifact	UNP Q91RS4
A	-5	GLY	-	cloning artifact	UNP Q91RS4
A	-4	GLY	-	cloning artifact	UNP Q91RS4
A	-3	GLN	-	cloning artifact	UNP Q91RS4
A	-2	GLN	-	cloning artifact	UNP Q91RS4
A	-1	MET	-	cloning artifact	UNP Q91RS4
A	0	GLY	-	cloning artifact	UNP Q91RS4
A	164	THR	ALA	engineered mutation	UNP Q91RS4
A	182	GLY	-	expression tag	UNP Q91RS4
A	183	SER	-	expression tag	UNP Q91RS4
A	184	HIS	-	expression tag	UNP Q91RS4
A	185	HIS	-	expression tag	UNP Q91RS4
A	186	HIS	-	expression tag	UNP Q91RS4
A	187	HIS	-	expression tag	UNP Q91RS4
A	188	HIS	-	expression tag	UNP Q91RS4
A	189	HIS	-	expression tag	UNP Q91RS4
B	-10	MET	-	cloning artifact	UNP Q91RS4
B	-9	ALA	-	cloning artifact	UNP Q91RS4
B	-8	SER	-	cloning artifact	UNP Q91RS4
B	-7	MET	-	cloning artifact	UNP Q91RS4
B	-6	THR	-	cloning artifact	UNP Q91RS4

*Continued on next page...*

*Continued from previous page...*

Chain	Residue	Modelled	Actual	Comment	Reference
B	-5	GLY	-	cloning artifact	UNP Q91RS4
B	-4	GLY	-	cloning artifact	UNP Q91RS4
B	-3	GLN	-	cloning artifact	UNP Q91RS4
B	-2	GLN	-	cloning artifact	UNP Q91RS4
B	-1	MET	-	cloning artifact	UNP Q91RS4
B	0	GLY	-	cloning artifact	UNP Q91RS4
B	164	THR	ALA	engineered mutation	UNP Q91RS4
B	182	GLY	-	expression tag	UNP Q91RS4
B	183	SER	-	expression tag	UNP Q91RS4
B	184	HIS	-	expression tag	UNP Q91RS4
B	185	HIS	-	expression tag	UNP Q91RS4
B	186	HIS	-	expression tag	UNP Q91RS4
B	187	HIS	-	expression tag	UNP Q91RS4
B	188	HIS	-	expression tag	UNP Q91RS4
B	189	HIS	-	expression tag	UNP Q91RS4

- Molecule 2 is a protein called NS4A COFACTOR.

Mol	Chain	Residues	Atoms				ZeroOcc	AltConf	Trace
2	C	21	Total	C	N	O	0	0	0
			149	99	27	23			
2	D	16	Total	C	N	O	0	0	0
			108	70	20	18			

There are 8 discrepancies between the modelled and reference sequences:

Chain	Residue	Modelled	Actual	Comment	Reference
C	19	LYS	-	cloning artifact	GB 5748511
C	20	LYS	-	cloning artifact	GB 5748511
C	40	LYS	-	cloning artifact	GB 5748511
C	41	LYS	-	cloning artifact	GB 5748511
D	19	LYS	-	cloning artifact	GB 5748511
D	20	LYS	-	cloning artifact	GB 5748511
D	40	LYS	-	cloning artifact	GB 5748511
D	41	LYS	-	cloning artifact	GB 5748511

- Molecule 3 is ZINC ION (CCD ID: ZN) (formula: Zn).

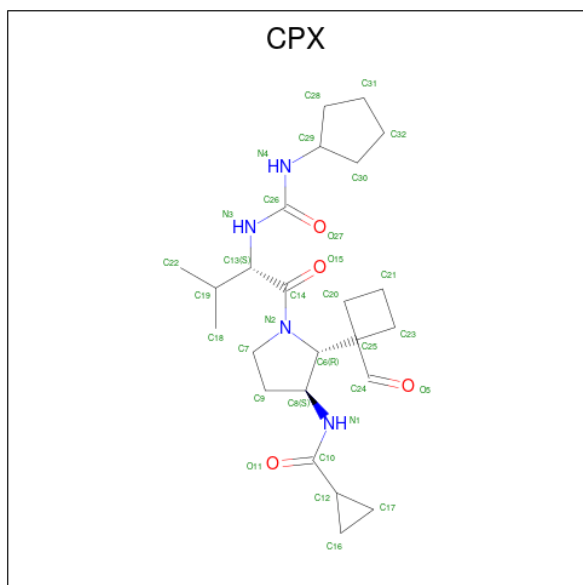
Mol	Chain	Residues	Atoms		ZeroOcc	AltConf
3	A	1	Total	Zn	0	0
			1	1		

*Continued on next page...*

Continued from previous page...

Mol	Chain	Residues	Atoms		ZeroOcc	AltConf
3	B	1	Total	Zn	0	0
			1	1		

- Molecule 4 is N-[(2R,3S)-1-((2S)-2-[[[(CYCLOPENTYLAMINO)CARBONYL]AMINO]-3-METHYLBUTANOYL)-2-(1-FORMYL-1-CYCLOBUTYL)PYRROLIDINYL]CYCLOPROPANECARBOXAMIDE (CCD ID: CPX) (formula: C<sub>24</sub>H<sub>38</sub>N<sub>4</sub>O<sub>4</sub>).



Mol	Chain	Residues	Atoms				ZeroOcc	AltConf
4	A	1	Total	C	N	O	0	0
			32	24	4	4		

- Molecule 5 is water.

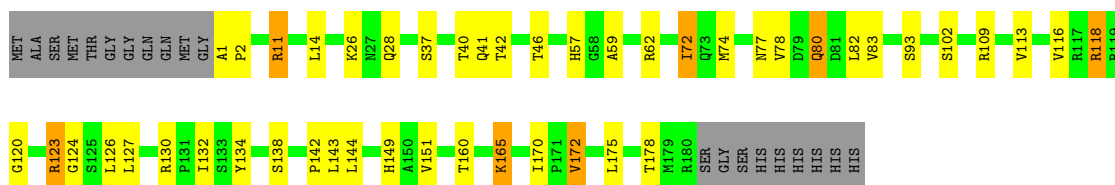
Mol	Chain	Residues	Atoms		ZeroOcc	AltConf
5	A	49	Total	O	0	0
			49	49		
5	B	36	Total	O	0	0
			36	36		
5	C	5	Total	O	0	0
			5	5		
5	D	12	Total	O	0	0
			12	12		

### 3 Residue-property plots [i](#)

These plots are drawn for all protein, RNA, DNA and oligosaccharide chains in the entry. The first graphic for a chain summarises the proportions of the various outlier classes displayed in the second graphic. The second graphic shows the sequence view annotated by issues in geometry and electron density. Residues are color-coded according to the number of geometric quality criteria for which they contain at least one outlier: green = 0, yellow = 1, orange = 2 and red = 3 or more. A red dot above a residue indicates a poor fit to the electron density ( $RSRZ > 2$ ). Stretches of 2 or more consecutive residues without any outlier are shown as a green connector. Residues present in the sample, but not in the model, are shown in grey.

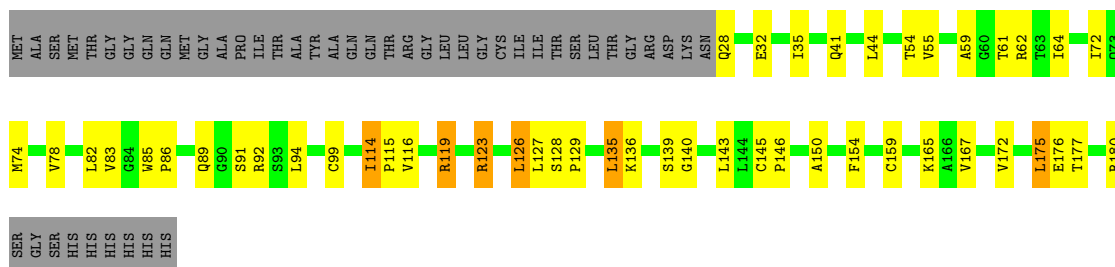
- Molecule 1: NS3 protease/helicase

Chain A: 



- Molecule 1: NS3 protease/helicase

Chain B: 



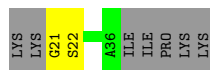
- Molecule 2: NS4A COFACTOR

Chain C: 



- Molecule 2: NS4A COFACTOR

Chain D: 



## 4 Data and refinement statistics

Property	Value	Source
Space group	H 3 2	Depositor
Cell constants a, b, c, $\alpha$ , $\beta$ , $\gamma$	224.08Å 224.08Å 75.69Å 90.00° 90.00° 120.00°	Depositor
Resolution (Å)	20.00 – 2.75 20.00 – 2.75	Depositor EDS
% Data completeness (in resolution range)	100.0 (20.00-2.75) 99.1 (20.00-2.75)	Depositor EDS
$R_{merge}$	0.08	Depositor
$R_{sym}$	(Not available)	Depositor
$\langle I/\sigma(I) \rangle$ <sup>1</sup>	2.04 (at 2.76Å)	Xtrriage
Refinement program	REFMAC 5.1.27	Depositor
R, $R_{free}$	0.180 , 0.234 0.178 , 0.229	Depositor DCC
$R_{free}$ test set	960 reflections (5.12%)	wwPDB-VP
Wilson B-factor (Å <sup>2</sup> )	51.4	Xtrriage
Anisotropy	0.146	Xtrriage
Bulk solvent $k_{sol}$ (e/Å <sup>3</sup> ), $B_{sol}$ (Å <sup>2</sup> )	0.36 , 59.5	EDS
L-test for twinning <sup>2</sup>	$\langle  L  \rangle = 0.48$ , $\langle L^2 \rangle = 0.31$	Xtrriage
Estimated twinning fraction	No twinning to report.	Xtrriage
$F_o, F_c$ correlation	0.95	EDS
Total number of atoms	2868	wwPDB-VP
Average B, all atoms (Å <sup>2</sup> )	50.0	wwPDB-VP

Xtrriage's analysis on translational NCS is as follows: *The largest off-origin peak in the Patterson function is 3.65% of the height of the origin peak. No significant pseudotranslation is detected.*

<sup>1</sup>Intensities estimated from amplitudes.

<sup>2</sup>Theoretical values of  $\langle |L| \rangle$ ,  $\langle L^2 \rangle$  for acentric reflections are 0.5, 0.333 respectively for untwinned datasets, and 0.375, 0.2 for perfectly twinned datasets.

## 5 Model quality i

### 5.1 Standard geometry i

Bond lengths and bond angles in the following residue types are not validated in this section: CPX, ZN

The Z score for a bond length (or angle) is the number of standard deviations the observed value is removed from the expected value. A bond length (or angle) with  $|Z| > 5$  is considered an outlier worth inspection. RMSZ is the root-mean-square of all Z scores of the bond lengths (or angles).

Mol	Chain	Bond lengths		Bond angles	
		RMSZ	# Z  >5	RMSZ	# Z  >5
1	A	1.19	2/1363 (0.1%)	1.36	5/1859 (0.3%)
1	B	1.30	5/1162 (0.4%)	1.39	6/1586 (0.4%)
2	C	1.48	1/150 (0.7%)	1.38	2/201 (1.0%)
2	D	1.49	1/108 (0.9%)	1.45	0/145
All	All	1.27	9/2783 (0.3%)	1.38	13/3791 (0.3%)

All (9) bond length outliers are listed below:

Mol	Chain	Res	Type	Atoms	Z	Observed(Å)	Ideal(Å)
1	B	74	MET	SD-CE	7.42	1.98	1.79
2	C	29	ILE	CA-CB	-6.65	1.46	1.54
1	B	35	ILE	CA-CB	6.42	1.61	1.54
1	B	177	THR	CA-CB	6.16	1.63	1.53
1	A	72	ILE	CA-CB	5.45	1.61	1.54
2	D	21	GLY	N-CA	5.27	1.53	1.45
1	B	72	ILE	CA-CB	5.25	1.61	1.54
1	A	170	ILE	CA-CB	-5.13	1.48	1.53
1	B	167	VAL	C-O	5.09	1.29	1.23

All (13) bond angle outliers are listed below:

Mol	Chain	Res	Type	Atoms	Z	Observed(°)	Ideal(°)
1	A	113	VAL	CA-C-N	-9.29	115.25	123.33
1	A	113	VAL	C-N-CA	-9.29	115.25	123.33
1	A	41	GLN	N-CA-C	8.41	121.85	109.07
1	B	159	CYS	N-CA-C	6.62	120.61	109.76
2	C	33	GLY	N-CA-C	-6.22	104.12	112.14
1	B	61	THR	N-CA-C	-5.91	105.38	112.59
1	A	138	SER	N-CA-C	5.54	120.03	113.28
1	B	127	LEU	N-CA-C	-5.38	106.49	113.16

*Continued on next page...*

Continued from previous page...

Mol	Chain	Res	Type	Atoms	Z	Observed(°)	Ideal(°)
1	B	89	GLN	CB-CG-CD	-5.36	103.48	112.60
2	C	23	VAL	N-CA-C	-5.24	102.82	109.58
1	A	178	THR	N-CA-C	-5.05	105.96	111.82
1	B	165	LYS	N-CA-C	-5.03	107.09	114.39
1	B	41	GLN	N-CA-C	5.00	116.98	110.53

There are no chirality outliers.

There are no planarity outliers.

## 5.2 Too-close contacts [i](#)

In the following table, the Non-H and H(model) columns list the number of non-hydrogen atoms and hydrogen atoms in the chain respectively. The H(added) column lists the number of hydrogen atoms added and optimized by MolProbity. The Clashes column lists the number of clashes within the asymmetric unit, whereas Symm-Clashes lists symmetry-related clashes.

Mol	Chain	Non-H	H(model)	H(added)	Clashes	Symm-Clashes
1	A	1337	0	1353	36	0
1	B	1138	0	1142	22	0
2	C	149	0	180	1	0
2	D	108	0	125	0	0
3	A	1	0	0	0	0
3	B	1	0	0	0	0
4	A	32	0	35	1	0
5	A	49	0	0	3	0
5	B	36	0	0	0	0
5	C	5	0	0	0	0
5	D	12	0	0	0	0
All	All	2868	0	2835	57	0

The all-atom clashscore is defined as the number of clashes found per 1000 atoms (including hydrogen atoms). The all-atom clashscore for this structure is 10.

All (57) close contacts within the same asymmetric unit are listed below, sorted by their clash magnitude.

Atom-1	Atom-2	Interatomic distance (Å)	Clash overlap (Å)
1:A:77:ASN:ND2	1:A:80:GLN:HB2	1.83	0.94
1:A:1:ALA:HB3	1:A:2:PRO:HD2	1.64	0.80
1:A:118:ARG:HD2	1:A:120:GLY:O	1.81	0.80
1:A:42:THR:HG21	1:A:109:ARG:HH12	1.53	0.73

Continued on next page...

*Continued from previous page...*

Atom-1	Atom-2	Interatomic distance (Å)	Clash overlap (Å)
1:A:1:ALA:CB	1:A:2:PRO:CD	2.65	0.73
1:A:1:ALA:CB	1:A:2:PRO:HD2	2.18	0.73
1:A:151:VAL:O	1:A:172:VAL:HG22	1.89	0.71
1:A:77:ASN:HD21	1:A:80:GLN:HB2	1.54	0.69
1:A:62:ARG:HH11	1:A:62:ARG:HG3	1.65	0.61
1:B:126:LEU:N	1:B:126:LEU:HD23	2.16	0.60
1:A:116:VAL:HG22	1:A:126:LEU:CD2	2.30	0.60
1:B:82:LEU:HD21	1:B:175:LEU:HD22	1.82	0.60
1:A:123:ARG:HG3	1:A:124:GLY:N	2.17	0.60
1:A:165:LYS:HB3	1:A:165:LYS:NZ	2.16	0.59
1:A:116:VAL:HG22	1:A:126:LEU:HD23	1.83	0.59
1:A:1:ALA:HB1	1:A:2:PRO:CD	2.33	0.57
1:A:62:ARG:HD3	2:C:21:GLY:O	2.04	0.57
1:A:42:THR:HG21	1:A:109:ARG:NH1	2.20	0.55
1:B:59:ALA:O	1:B:62:ARG:HG3	2.08	0.54
1:A:82:LEU:HD21	1:A:175:LEU:HD22	1.89	0.53
1:A:134:TYR:C	1:A:134:TYR:CD1	2.89	0.51
1:A:78:VAL:HG23	5:A:339:HOH:O	2.11	0.50
1:A:109:ARG:HG2	5:A:321:HOH:O	2.13	0.49
1:A:77:ASN:ND2	1:A:80:GLN:CB	2.67	0.48
1:A:57:HIS:NE2	4:A:201:CPX:H172	2.28	0.48
1:A:80:GLN:HE21	1:A:80:GLN:HA	1.78	0.48
1:A:42:THR:CG2	1:A:109:ARG:HH12	2.23	0.48
1:A:1:ALA:HB1	1:A:2:PRO:HD3	1.96	0.47
1:B:114:ILE:HA	1:B:115:PRO:HD3	1.68	0.47
1:B:145:CYS:HB2	1:B:146:PRO:CD	2.44	0.47
1:B:126:LEU:HD23	1:B:126:LEU:H	1.79	0.46
1:A:80:GLN:HA	1:A:80:GLN:NE2	2.32	0.45
1:A:59:ALA:O	1:A:62:ARG:HB2	2.16	0.45
1:B:123:ARG:HE	1:B:123:ARG:HB2	1.48	0.45
1:A:151:VAL:C	1:A:172:VAL:HG22	2.41	0.44
1:B:44:LEU:O	1:B:140:GLY:HA3	2.18	0.44
1:B:126:LEU:N	1:B:126:LEU:CD2	2.80	0.44
1:B:139:SER:HA	1:B:154:PHE:CD2	2.52	0.44
1:A:130:ARG:NH1	1:A:134:TYR:CE2	2.85	0.44
1:A:11:ARG:CG	1:A:11:ARG:HH11	2.31	0.44
1:B:85:TRP:HB3	1:B:86:PRO:HD2	2.00	0.43
1:B:135:LEU:N	1:B:135:LEU:HD23	2.34	0.43
1:B:54:THR:OG1	1:B:55:VAL:N	2.52	0.43
1:A:62:ARG:HG3	1:A:62:ARG:NH1	2.32	0.42
1:B:128:SER:HA	1:B:129:PRO:HD3	1.73	0.42

*Continued on next page...*

Continued from previous page...

Atom-1	Atom-2	Interatomic distance (Å)	Clash overlap (Å)
1:B:116:VAL:HG22	1:B:126:LEU:HD22	2.01	0.42
1:A:144:LEU:HA	1:A:149:HIS:O	2.19	0.42
1:A:46:THR:HG21	1:A:142:PRO:HB3	2.01	0.42
1:B:64:ILE:HG22	1:B:85:TRP:CD1	2.55	0.42
1:B:114:ILE:HD12	1:B:114:ILE:HG21	1.88	0.41
1:A:11:ARG:CG	1:A:11:ARG:NH1	2.83	0.41
1:A:26:LYS:HB2	5:A:313:HOH:O	2.20	0.41
1:A:127:LEU:HD12	1:B:99:CYS:HA	2.03	0.41
1:B:94:LEU:HD23	1:B:94:LEU:HA	1.88	0.41
1:B:94:LEU:HD13	1:B:150:ALA:HB2	2.01	0.41
1:B:172:VAL:O	1:B:176:GLU:HG3	2.21	0.40
1:B:119:ARG:HD3	1:B:119:ARG:HA	1.53	0.40

There are no symmetry-related clashes.

## 5.3 Torsion angles [i](#)

### 5.3.1 Protein backbone [i](#)

In the following table, the Percentiles column shows the percent Ramachandran outliers of the chain as a percentile score with respect to all X-ray entries followed by that with respect to entries of similar resolution.

The Analysed column shows the number of residues for which the backbone conformation was analysed, and the total number of residues.

Mol	Chain	Analysed	Favoured	Allowed	Outliers	Percentiles	
1	A	178/200 (89%)	173 (97%)	5 (3%)	0	100	100
1	B	151/200 (76%)	138 (91%)	13 (9%)	0	100	100
2	C	19/23 (83%)	19 (100%)	0	0	100	100
2	D	14/23 (61%)	14 (100%)	0	0	100	100
All	All	362/446 (81%)	344 (95%)	18 (5%)	0	100	100

There are no Ramachandran outliers to report.

### 5.3.2 Protein sidechains [i](#)

In the following table, the Percentiles column shows the percent sidechain outliers of the chain as a percentile score with respect to all X-ray entries followed by that with respect to entries of similar

resolution.

The Analysed column shows the number of residues for which the sidechain conformation was analysed, and the total number of residues.

Mol	Chain	Analysed	Rotameric	Outliers	Percentiles	
1	A	147/162 (91%)	129 (88%)	18 (12%)	5	8
1	B	126/162 (78%)	111 (88%)	15 (12%)	5	8
2	C	17/19 (90%)	16 (94%)	1 (6%)	18	33
2	D	12/19 (63%)	11 (92%)	1 (8%)	10	19
All	All	302/362 (83%)	267 (88%)	35 (12%)	5	10

All (35) residues with a non-rotameric sidechain are listed below:

Mol	Chain	Res	Type
1	A	11	ARG
1	A	14	LEU
1	A	28	GLN
1	A	37	SER
1	A	40	THR
1	A	72	ILE
1	A	74	MET
1	A	80	GLN
1	A	83	VAL
1	A	93	SER
1	A	102	SER
1	A	118	ARG
1	A	123	ARG
1	A	132	ILE
1	A	143	LEU
1	A	160	THR
1	A	165	LYS
1	A	172	VAL
1	B	28	GLN
1	B	32	GLU
1	B	78	VAL
1	B	83	VAL
1	B	91	SER
1	B	92	ARG
1	B	114	ILE
1	B	119	ARG
1	B	123	ARG
1	B	126	LEU

*Continued on next page...*

*Continued from previous page...*

Mol	Chain	Res	Type
1	B	135	LEU
1	B	136	LYS
1	B	143	LEU
1	B	175	LEU
1	B	180	ARG
2	C	40	LYS
2	D	22	SER

Sometimes sidechains can be flipped to improve hydrogen bonding and reduce clashes. All (5) such sidechains are listed below:

Mol	Chain	Res	Type
1	A	49	ASN
1	A	80	GLN
1	B	34	GLN
1	B	89	GLN
1	B	174	ASN

### 5.3.3 RNA [i](#)

There are no RNA molecules in this entry.

## 5.4 Non-standard residues in protein, DNA, RNA chains [i](#)

There are no non-standard protein/DNA/RNA residues in this entry.

## 5.5 Carbohydrates [i](#)

There are no oligosaccharides in this entry.

## 5.6 Ligand geometry [i](#)

Of 3 ligands modelled in this entry, 2 are monoatomic - leaving 1 for Mogul analysis.

In the following table, the Counts columns list the number of bonds (or angles) for which Mogul statistics could be retrieved, the number of bonds (or angles) that are observed in the model and the number of bonds (or angles) that are defined in the Chemical Component Dictionary. The Link column lists molecule types, if any, to which the group is linked. The Z score for a bond length (or angle) is the number of standard deviations the observed value is removed from the expected value. A bond length (or angle) with  $|Z| > 2$  is considered an outlier worth inspection. RMSZ is the root-mean-square of all Z scores of the bond lengths (or angles).

Mol	Type	Chain	Res	Link	Bond lengths			Bond angles		
					Counts	RMSZ	# Z  > 2	Counts	RMSZ	# Z  > 2
4	CPX	A	201	1	34,35,35	2.70	11 (32%)	43,51,51	4.58	24 (55%)

In the following table, the Chirals column lists the number of chiral outliers, the number of chiral centers analysed, the number of these observed in the model and the number defined in the Chemical Component Dictionary. Similar counts are reported in the Torsion and Rings columns. '-' means no outliers of that kind were identified.

Mol	Type	Chain	Res	Link	Chirals	Torsions	Rings
4	CPX	A	201	1	-	8/28/67/67	0/4/4/4

All (11) bond length outliers are listed below:

Mol	Chain	Res	Type	Atoms	Z	Observed(Å)	Ideal(Å)
4	A	201	CPX	C9-C8	-11.37	1.33	1.53
4	A	201	CPX	C8-N1	4.79	1.54	1.46
4	A	201	CPX	O5-C24	3.61	1.31	1.20
4	A	201	CPX	C30-C29	3.45	1.61	1.52
4	A	201	CPX	C23-C25	-3.30	1.51	1.56
4	A	201	CPX	C10-N1	3.05	1.40	1.34
4	A	201	CPX	C25-C6	-3.04	1.45	1.56
4	A	201	CPX	O15-C14	2.55	1.26	1.22
4	A	201	CPX	C25-C24	2.43	1.55	1.51
4	A	201	CPX	O11-C10	2.30	1.27	1.23
4	A	201	CPX	C28-C29	2.03	1.58	1.52

All (24) bond angle outliers are listed below:

Mol	Chain	Res	Type	Atoms	Z	Observed(°)	Ideal(°)
4	A	201	CPX	C9-C7-N2	-13.91	87.95	103.22
4	A	201	CPX	C29-N4-C26	12.14	149.06	122.92
4	A	201	CPX	O5-C24-C25	-11.46	101.45	126.36
4	A	201	CPX	C8-N1-C10	-9.38	106.94	123.25
4	A	201	CPX	C13-N3-C26	9.01	136.97	121.99
4	A	201	CPX	O11-C10-C12	-5.75	113.31	122.19
4	A	201	CPX	C17-C12-C10	-5.28	112.08	117.24
4	A	201	CPX	O27-C26-N4	5.08	133.50	122.67
4	A	201	CPX	C6-C8-N1	4.66	120.64	113.24
4	A	201	CPX	C19-C13-N3	-4.46	100.66	111.44
4	A	201	CPX	C23-C25-C24	-3.81	97.75	115.07
4	A	201	CPX	C16-C12-C10	3.78	120.93	117.24
4	A	201	CPX	C21-C23-C25	3.55	94.33	89.41
4	A	201	CPX	C9-C8-C6	-3.31	98.48	103.95

*Continued on next page...*

*Continued from previous page...*

Mol	Chain	Res	Type	Atoms	Z	Observed(°)	Ideal(°)
4	A	201	CPX	C19-C13-C14	2.86	116.31	110.71
4	A	201	CPX	C23-C25-C20	-2.74	83.21	87.46
4	A	201	CPX	C20-C21-C23	-2.57	84.88	90.11
4	A	201	CPX	C12-C10-N1	2.26	120.08	116.19
4	A	201	CPX	O27-C26-N3	-2.16	118.05	122.67
4	A	201	CPX	O15-C14-C13	-2.16	115.89	119.96
4	A	201	CPX	C20-C25-C24	-2.16	105.23	115.07
4	A	201	CPX	C30-C29-N4	2.14	116.35	111.98
4	A	201	CPX	N3-C26-N4	-2.07	108.45	114.99
4	A	201	CPX	O11-C10-N1	2.03	126.59	122.96

There are no chirality outliers.

All (8) torsion outliers are listed below:

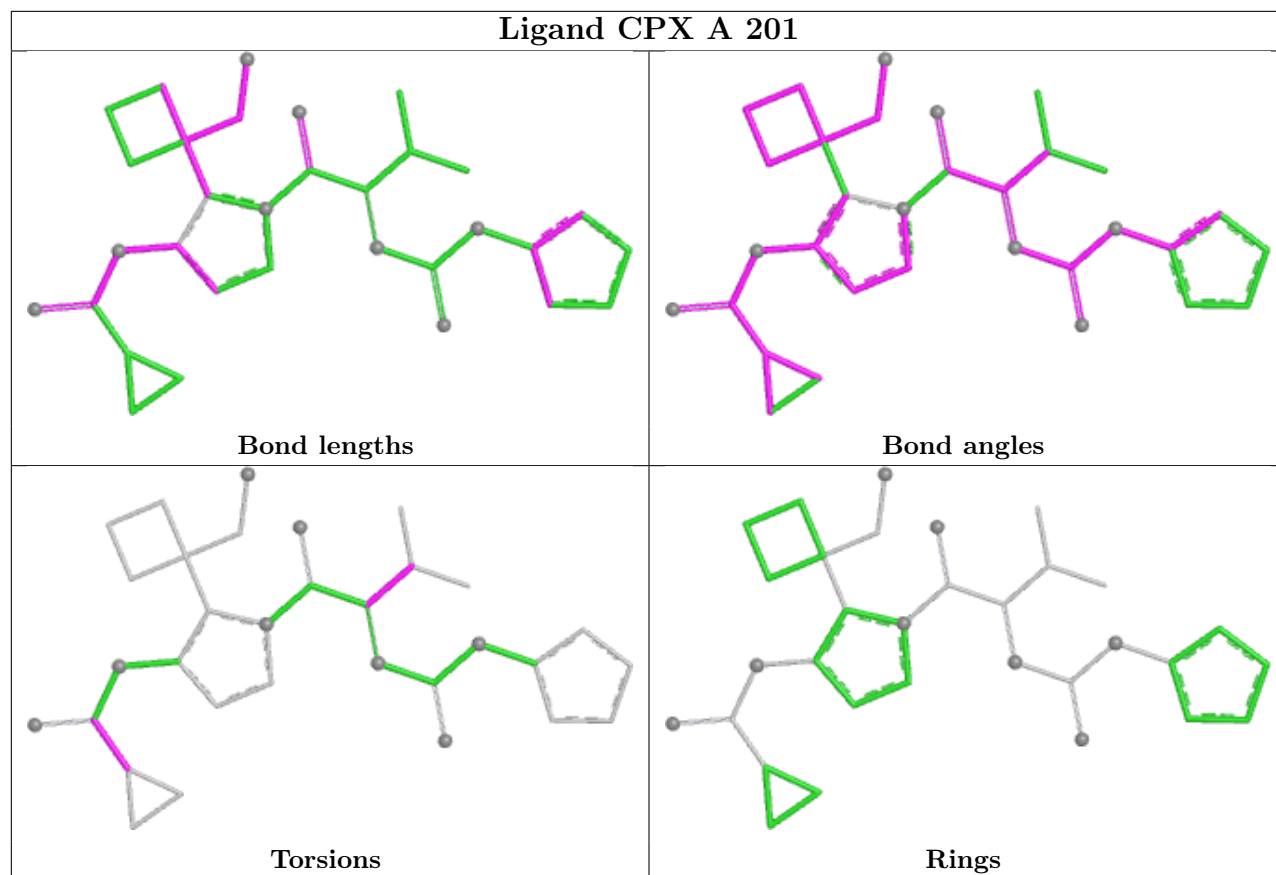
Mol	Chain	Res	Type	Atoms
4	A	201	CPX	N1-C10-C12-C17
4	A	201	CPX	O11-C10-C12-C17
4	A	201	CPX	N1-C10-C12-C16
4	A	201	CPX	O11-C10-C12-C16
4	A	201	CPX	C14-C13-C19-C22
4	A	201	CPX	N3-C13-C19-C22
4	A	201	CPX	N3-C13-C19-C18
4	A	201	CPX	C14-C13-C19-C18

There are no ring outliers.

1 monomer is involved in 1 short contact:

Mol	Chain	Res	Type	Clashes	Symm-Clashes
4	A	201	CPX	1	0

The following is a two-dimensional graphical depiction of Mogul quality analysis of bond lengths, bond angles, torsion angles, and ring geometry for all instances of the Ligand of Interest. In addition, ligands with molecular weight > 250 and outliers as shown on the validation Tables will also be included. For torsion angles, if less than 5% of the Mogul distribution of torsion angles is within 10 degrees of the torsion angle in question, then that torsion angle is considered an outlier. Any bond that is central to one or more torsion angles identified as an outlier by Mogul will be highlighted in the graph. For rings, the root-mean-square deviation (RMSD) between the ring in question and similar rings identified by Mogul is calculated over all ring torsion angles. If the average RMSD is greater than 60 degrees and the minimal RMSD between the ring in question and any Mogul-identified rings is also greater than 60 degrees, then that ring is considered an outlier. The outliers are highlighted in purple. The color gray indicates Mogul did not find sufficient equivalents in the CSD to analyse the geometry.



## 5.7 Other polymers [i](#)

There are no such residues in this entry.

## 5.8 Polymer linkage issues [i](#)

There are no chain breaks in this entry.

## 6 Fit of model and data [i](#)

### 6.1 Protein, DNA and RNA chains [i](#)

In the following table, the column labelled ‘#RSRZ > 2’ contains the number (and percentage) of RSRZ outliers, followed by percent RSRZ outliers for the chain as percentile scores relative to all X-ray entries and entries of similar resolution. The OWAB column contains the minimum, median, 95<sup>th</sup> percentile and maximum values of the occupancy-weighted average B-factor per residue. The column labelled ‘Q < 0.9’ lists the number of (and percentage) of residues with an average occupancy less than 0.9.

Mol	Chain	Analysed	<RSRZ>	#RSRZ>2	OWAB(Å <sup>2</sup> )	Q<0.9
1	A	180/200 (90%)	-0.58	0 100 100	30, 50, 73, 82	0
1	B	153/200 (76%)	-0.61	0 100 100	26, 47, 71, 90	0
2	C	21/23 (91%)	-0.71	0 100 100	30, 37, 61, 76	0
2	D	16/23 (69%)	-0.94	0 100 100	29, 36, 57, 62	0
All	All	370/446 (82%)	-0.62	0 100 100	26, 48, 72, 90	0

There are no RSRZ outliers to report.

### 6.2 Non-standard residues in protein, DNA, RNA chains [i](#)

There are no non-standard protein/DNA/RNA residues in this entry.

### 6.3 Carbohydrates [i](#)

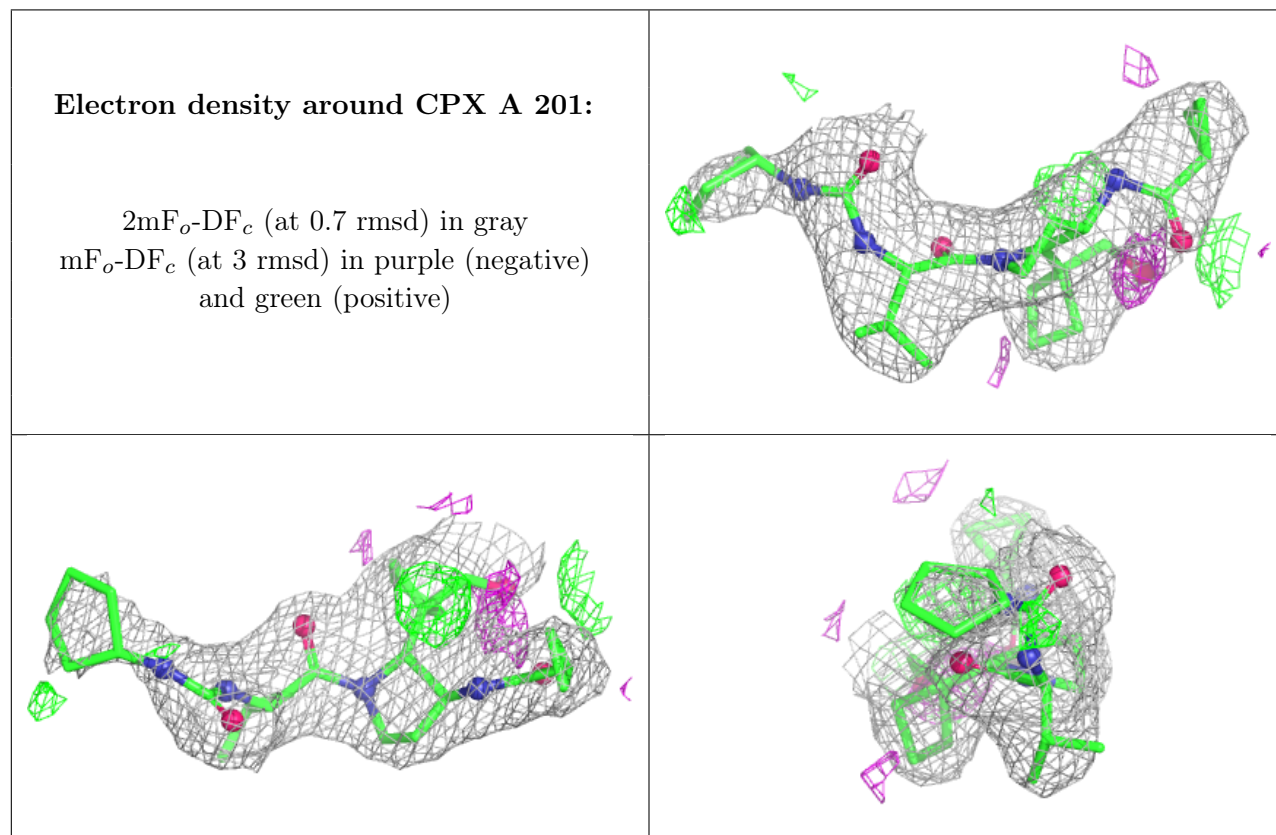
There are no oligosaccharides in this entry.

### 6.4 Ligands [i](#)

In the following table, the Atoms column lists the number of modelled atoms in the group and the number defined in the chemical component dictionary. The B-factors column lists the minimum, median, 95<sup>th</sup> percentile and maximum values of B factors of atoms in the group. The column labelled ‘Q < 0.9’ lists the number of atoms with occupancy less than 0.9.

Mol	Type	Chain	Res	Atoms	RSCC	RSR	B-factors(Å <sup>2</sup> )	Q<0.9
4	CPX	A	201	32/32	0.92	0.12	45,60,100,102	0
3	ZN	A	301	1/1	0.99	0.02	56,56,56,56	0
3	ZN	B	301	1/1	1.00	0.01	43,43,43,43	0

The following is a graphical depiction of the model fit to experimental electron density of all instances of the Ligand of Interest. In addition, ligands with molecular weight > 250 and outliers as shown on the geometry validation Tables will also be included. Each fit is shown from different orientation to approximate a three-dimensional view.



## 6.5 Other polymers [i](#)

There are no such residues in this entry.