



# Full wwPDB X-ray Structure Validation Report ⓘ

Mar 1, 2026 – 04:01 PM UTC

PDB ID : 2RTE / pdb\_00002rte  
Title : STREPTAVIDIN-BIOTIN COMPLEX, PH 1.90, SPACE GROUP I222  
Authors : Katz, B.A.  
Deposited on : 1997-09-11  
Resolution : 1.50 Å(reported)

This is a Full wwPDB X-ray Structure Validation Report for a publicly released PDB entry.

We welcome your comments at [validation@mail.wwpdb.org](mailto:validation@mail.wwpdb.org)

A user guide is available at

<https://www.wwpdb.org/validation/2017/XrayValidationReportHelp>

with specific help available everywhere you see the ⓘ symbol.

The types of validation reports are described at

<http://www.wwpdb.org/validation/2017/FAQs#types>.

---

The following versions of software and data (see [references ⓘ](#)) were used in the production of this report:

MolProbity : 4-5-2 with Phenix2.0  
Mogul : 2022.3.0, CSD as543be (2022)  
Xtrriage (Phenix) : 2.0  
EDS : 3.0  
Percentile statistics : 20250101.v01 (using entries in the PDB archive January 1st 2025)  
CCP4 : 9.0.010 (Gargrove)  
Density-Fitness : 1.0.12  
Ideal geometry (proteins) : Engh & Huber (2001)  
Ideal geometry (DNA, RNA) : Parkinson et al. (1996)  
Validation Pipeline (wwPDB-VP) : 2.49

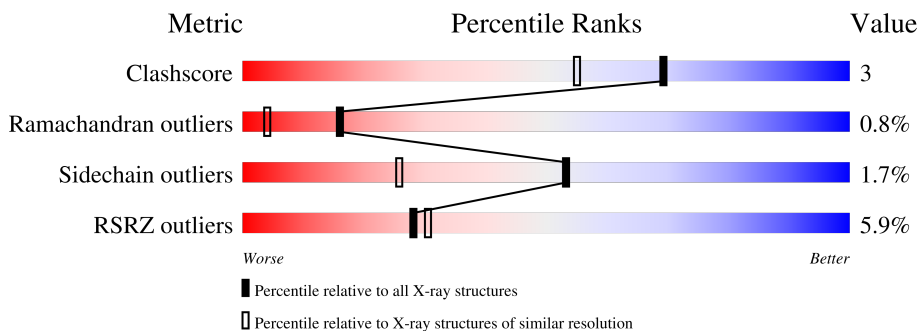
# 1 Overall quality at a glance

The following experimental techniques were used to determine the structure:

*X-RAY DIFFRACTION*

The reported resolution of this entry is 1.50 Å.

Percentile scores (ranging between 0-100) for global validation metrics of the entry are shown in the following graphic. The table shows the number of entries on which the scores are based.



Metric	Whole archive (#Entries)	Similar resolution (#Entries, resolution range(Å))
Clashscore	190562	4235 (1.50-1.50)
Ramachandran outliers	187476	4153 (1.50-1.50)
Sidechain outliers	187428	4150 (1.50-1.50)
RSRZ outliers	180081	4039 (1.50-1.50)

The table below summarises the geometric issues observed across the polymeric chains and their fit to the electron density. The red, orange, yellow and green segments of the lower bar indicate the fraction of residues that contain outliers for  $\geq 3$ , 2, 1 and 0 types of geometric quality criteria respectively. A grey segment represents the fraction of residues that are not modelled. The numeric value for each fraction is indicated below the corresponding segment, with a dot representing fractions  $\leq 5\%$ . The upper red bar (where present) indicates the fraction of residues that have poor fit to the electron density. The numeric value is given above the bar.

Mol	Chain	Length	Quality of chain
1	B	135	
1	D	135	

The following table lists non-polymeric compounds, carbohydrate monomers and non-standard residues in protein, DNA, RNA chains that are outliers for geometric or electron-density-fit criteria:

Mol	Type	Chain	Res	Chirality	Geometry	Clashes	Electron density
3	SO4	D	300[A]	-	-	X	-

## 2 Entry composition [i](#)

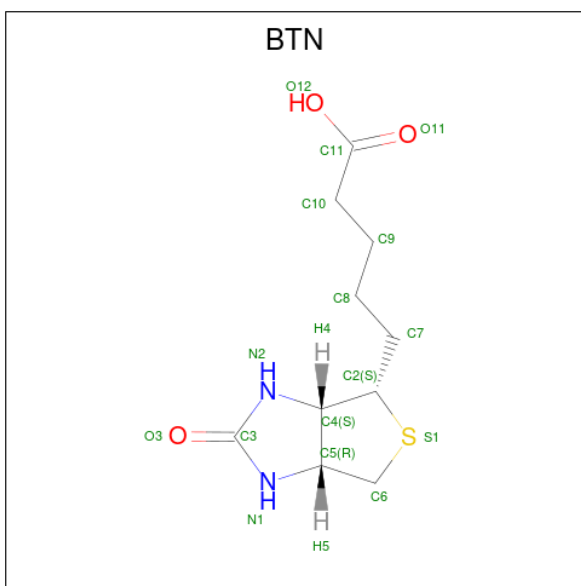
There are 4 unique types of molecules in this entry. The entry contains 4460 atoms, of which 2257 are hydrogens and 0 are deuteriums.

In the tables below, the ZeroOcc column contains the number of atoms modelled with zero occupancy, the AltConf column contains the number of residues with at least one atom in alternate conformation and the Trace column contains the number of residues modelled with at most 2 atoms.

- Molecule 1 is a protein called STREPTAVIDIN.

Mol	Chain	Residues	Atoms					ZeroOcc	AltConf	Trace
			Total	C	H	N	O			
1	B	123	Total	C	H	N	O	82	16	0
			1969	635	959	169	206			
1	D	121	Total	C	H	N	O	76	11	0
			1879	606	906	166	201			

- Molecule 2 is BIOTIN (CCD ID: BTN) (formula:  $C_{10}H_{16}N_2O_3S$ ).



Mol	Chain	Residues	Atoms						ZeroOcc	AltConf
			Total	C	H	N	O	S		
2	B	1	Total	C	H	N	O	S	0	0
			31	10	15	2	3	1		
2	D	1	Total	C	H	N	O	S	0	0
			31	10	15	2	3	1		

- Molecule 3 is SULFATE ION (CCD ID: SO4) (formula:  $O_4S$ ).



Mol	Chain	Residues	Atoms			ZeroOcc	AltConf
3	D	1	Total	O	S	0	1
			5	4	1		

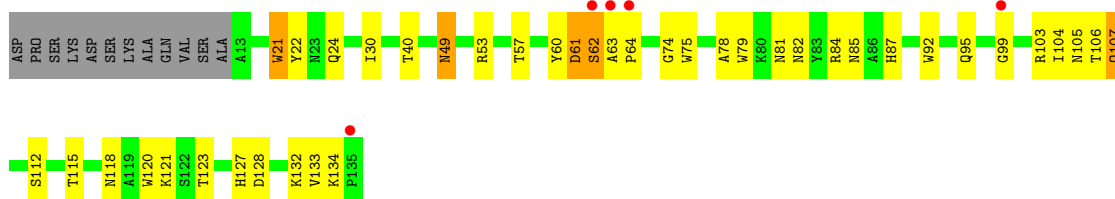
- Molecule 4 is water.

Mol	Chain	Residues	Atoms			ZeroOcc	AltConf
4	B	75	Total	H	O	0	3
			221	146	75		
4	D	108	Total	H	O	0	7
			324	216	108		

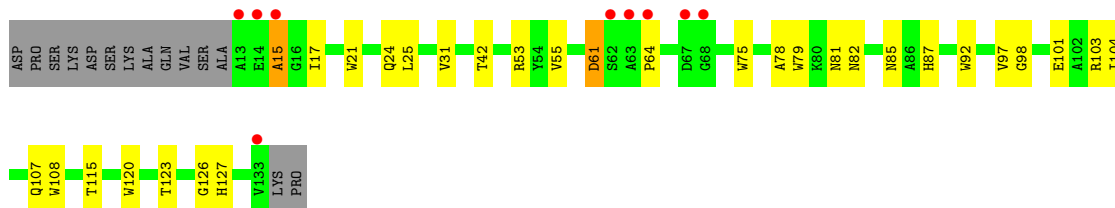
### 3 Residue-property plots [i](#)

These plots are drawn for all protein, RNA, DNA and oligosaccharide chains in the entry. The first graphic for a chain summarises the proportions of the various outlier classes displayed in the second graphic. The second graphic shows the sequence view annotated by issues in geometry and electron density. Residues are color-coded according to the number of geometric quality criteria for which they contain at least one outlier: green = 0, yellow = 1, orange = 2 and red = 3 or more. A red dot above a residue indicates a poor fit to the electron density ( $RSRZ > 2$ ). Stretches of 2 or more consecutive residues without any outlier are shown as a green connector. Residues present in the sample, but not in the model, are shown in grey.

- Molecule 1: STREPTAVIDIN



- Molecule 1: STREPTAVIDIN



## 4 Data and refinement statistics

Property	Value	Source
Space group	I 2 2 2	Depositor
Cell constants a, b, c, $\alpha$ , $\beta$ , $\gamma$	95.15Å 106.24Å 49.21Å 90.00° 90.00° 90.00°	Depositor
Resolution (Å)	7.50 – 1.50 7.50 – 1.50	Depositor EDS
% Data completeness (in resolution range)	75.0 (7.50-1.50) 74.5 (7.50-1.50)	Depositor EDS
$R_{merge}$	0.06	Depositor
$R_{sym}$	(Not available)	Depositor
$\langle I/\sigma(I) \rangle$ <sup>1</sup>	1.07 (at 1.33Å)	Xtrriage
Refinement program	X-PLOR	Depositor
R, $R_{free}$	0.203 , 0.220 0.220 , (Not available)	Depositor DCC
$R_{free}$ test set	No test flags present.	wwPDB-VP
Wilson B-factor (Å <sup>2</sup> )	18.2	Xtrriage
Anisotropy	0.220	Xtrriage
Bulk solvent $k_{sol}$ (e/Å <sup>3</sup> ), $B_{sol}$ (Å <sup>2</sup> )	0.28 , 63.3	EDS
L-test for twinning <sup>2</sup>	$\langle  L  \rangle = 0.50$ , $\langle L^2 \rangle = 0.34$	Xtrriage
Estimated twinning fraction	No twinning to report.	Xtrriage
$F_o, F_c$ correlation	0.97	EDS
Total number of atoms	4460	wwPDB-VP
Average B, all atoms (Å <sup>2</sup> )	29.0	wwPDB-VP

Xtrriage's analysis on translational NCS is as follows: *The largest off-origin peak in the Patterson function is 7.68% of the height of the origin peak. No significant pseudotranslation is detected.*

<sup>1</sup>Intensities estimated from amplitudes.

<sup>2</sup>Theoretical values of  $\langle |L| \rangle$ ,  $\langle L^2 \rangle$  for acentric reflections are 0.5, 0.333 respectively for untwinned datasets, and 0.375, 0.2 for perfectly twinned datasets.

## 5 Model quality i

### 5.1 Standard geometry i

Bond lengths and bond angles in the following residue types are not validated in this section: SO4, BTN

The Z score for a bond length (or angle) is the number of standard deviations the observed value is removed from the expected value. A bond length (or angle) with  $|Z| > 5$  is considered an outlier worth inspection. RMSZ is the root-mean-square of all Z scores of the bond lengths (or angles).

Mol	Chain	Bond lengths		Bond angles	
		RMSZ	# Z  >5	RMSZ	# Z  >5
1	B	1.88	9/1060 (0.8%)	1.78	28/1451 (1.9%)
1	D	1.89	15/1001 (1.5%)	1.74	21/1372 (1.5%)
All	All	1.89	24/2061 (1.2%)	1.76	49/2823 (1.7%)

Chiral center outliers are detected by calculating the chiral volume of a chiral center and verifying if the center is modelled as a planar moiety or with the opposite hand. A planarity outlier is detected by checking planarity of atoms in a peptide group, atoms in a mainchain group or atoms of a sidechain that are expected to be planar.

Mol	Chain	#Chirality outliers	#Planarity outliers
1	B	0	2
1	D	0	2
All	All	0	4

All (24) bond length outliers are listed below:

Mol	Chain	Res	Type	Atoms	Z	Observed(Å)	Ideal(Å)
1	D	79	TRP	CA-CB	6.64	1.60	1.52
1	D	127	HIS	CG-ND1	-6.49	1.31	1.38
1	B	74	GLY	CA-C	6.27	1.57	1.51
1	B	87	HIS	CD2-NE2	-6.01	1.31	1.37
1	D	81	ASN	CA-CB	5.96	1.61	1.53
1	D	87	HIS	CD2-NE2	-5.96	1.31	1.37
1	D	98	GLY	N-CA	5.62	1.50	1.44
1	D	127	HIS	CG-CD2	5.53	1.42	1.35
1	D	127	HIS	CD2-NE2	-5.48	1.31	1.37
1	D	120	TRP	NE1-CE2	-5.46	1.31	1.37
1	B	30[A]	ILE	N-CA	5.43	1.53	1.46
1	B	30[B]	ILE	N-CA	5.43	1.53	1.46
1	D	21	TRP	CG-CD2	-5.38	1.34	1.43
1	B	127	HIS	CG-ND1	-5.31	1.32	1.38

*Continued on next page...*

*Continued from previous page...*

Mol	Chain	Res	Type	Atoms	Z	Observed(Å)	Ideal(Å)
1	D	87	HIS	CG-ND1	-5.28	1.32	1.38
1	D	55	VAL	CA-CB	5.17	1.60	1.54
1	B	127	HIS	CD2-NE2	-5.15	1.32	1.37
1	B	105	ASN	N-CA	5.08	1.52	1.46
1	D	61[A]	ASP	CG-OD2	-5.03	1.23	1.33
1	D	61[B]	ASP	CG-OD2	-5.03	1.23	1.33
1	B	61[A]	ASP	CG-OD2	-5.03	1.23	1.33
1	B	61[B]	ASP	CG-OD2	-5.03	1.23	1.33
1	D	123	THR	CA-CB	5.03	1.61	1.53
1	D	42	THR	CA-C	5.02	1.58	1.52

All (49) bond angle outliers are listed below:

Mol	Chain	Res	Type	Atoms	Z	Observed(°)	Ideal(°)
1	D	123	THR	N-CA-C	9.87	124.50	108.41
1	B	78	ALA	N-CA-C	-9.11	94.39	109.24
1	D	78	ALA	N-CA-C	-8.93	94.69	109.07
1	B	85	ASN	CA-CB-CG	-8.61	103.99	112.60
1	D	115	THR	N-CA-C	-8.35	98.49	110.59
1	B	115	THR	N-CA-C	-7.54	99.66	110.59
1	D	17	ILE	N-CA-C	-7.53	103.60	111.58
1	D	107	GLN	N-CA-C	-7.17	97.27	109.24
1	B	123	THR	N-CA-C	7.17	120.61	109.07
1	B	107	GLN	N-CA-C	-6.87	97.77	109.24
1	B	104	ILE	N-CA-C	-6.57	98.05	107.77
1	B	57	THR	CA-CB-OG1	-6.25	100.22	109.60
1	D	31	VAL	N-CA-C	6.15	118.89	108.86
1	B	82	ASN	OD1-CG-ND2	-6.07	116.53	122.60
1	B	107	GLN	CA-CB-CG	-6.05	102.00	114.10
1	D	85	ASN	CA-CB-CG	-6.01	106.59	112.60
1	D	75	TRP	CG-CD1-NE1	-5.99	102.41	110.20
1	D	92	TRP	CG-CD1-NE1	-5.88	102.56	110.20
1	B	21	TRP	NE1-CE2-CZ2	5.81	138.82	130.10
1	B	21	TRP	CG-CD1-NE1	-5.78	102.69	110.20
1	B	134	LYS	N-CA-C	-5.77	97.05	109.81
1	B	128	ASP	CA-CB-CG	5.71	118.31	112.60
1	D	107	GLN	CA-CB-CG	-5.70	102.70	114.10
1	D	79	TRP	NE1-CE2-CZ2	5.66	138.59	130.10
1	B	92	TRP	CG-CD1-NE1	-5.64	102.87	110.20
1	B	75	TRP	CG-CD1-NE1	-5.63	102.88	110.20
1	B	120	TRP	CG-CD1-NE1	-5.63	102.88	110.20
1	D	21	TRP	CG-CD1-NE1	-5.62	102.89	110.20

*Continued on next page...*

Continued from previous page...

Mol	Chain	Res	Type	Atoms	Z	Observed(°)	Ideal(°)
1	B	120	TRP	NE1-CE2-CZ2	5.61	138.51	130.10
1	B	106	THR	N-CA-C	5.60	117.48	109.14
1	B	24	GLN	N-CA-C	5.57	119.17	112.38
1	B	49	ASN	OD1-CG-ND2	-5.55	117.05	122.60
1	D	104	ILE	N-CA-C	-5.54	97.93	107.24
1	B	81	ASN	CA-CB-CG	5.53	118.12	112.60
1	B	99	GLY	N-CA-C	-5.52	102.98	110.43
1	D	21	TRP	NE1-CE2-CZ2	5.52	138.38	130.10
1	D	25	LEU	N-CA-C	-5.50	106.61	113.38
1	D	81	ASN	CA-CB-CG	5.49	118.09	112.60
1	B	79	TRP	N-CA-C	5.40	119.06	110.70
1	B	112	SER	CA-CB-OG	-5.39	100.31	111.10
1	D	97	VAL	N-CA-C	-5.38	99.80	107.77
1	B	118	ASN	OD1-CG-ND2	-5.33	117.27	122.60
1	D	24	GLN	OE1-CD-NE2	-5.21	117.39	122.60
1	B	21	TRP	NE1-CE2-CD2	-5.20	100.64	107.40
1	D	92	TRP	NE1-CE2-CZ2	5.18	137.87	130.10
1	D	82	ASN	OD1-CG-ND2	-5.16	117.44	122.60
1	B	53	ARG	O-C-N	5.05	128.74	123.03
1	B	75	TRP	NE1-CE2-CZ2	5.04	137.65	130.10
1	D	79	TRP	N-CA-C	5.02	118.47	110.70

There are no chirality outliers.

All (4) planarity outliers are listed below:

Mol	Chain	Res	Type	Group
1	B	103	ARG	Sidechain
1	B	63[A]	ALA	Peptide
1	D	103	ARG	Sidechain
1	D	53	ARG	Sidechain

## 5.2 Too-close contacts

In the following table, the Non-H and H(model) columns list the number of non-hydrogen atoms and hydrogen atoms in the chain respectively. The H(added) column lists the number of hydrogen atoms added and optimized by MolProbity. The Clashes column lists the number of clashes within the asymmetric unit, whereas Symm-Clashes lists symmetry-related clashes.

Mol	Chain	Non-H	H(model)	H(added)	Clashes	Symm-Clashes
1	B	1010	959	942	11	2
1	D	973	906	899	2	2

Continued on next page...

Continued from previous page...

Mol	Chain	Non-H	H(model)	H(added)	Clashes	Symm-Clashes
2	B	16	15	15	0	0
2	D	16	15	15	0	0
3	D	5	0	0	0	2
4	B	75	146	0	4	4
4	D	108	216	0	0	13
All	All	2203	2257	1871	13	18

The all-atom clashscore is defined as the number of clashes found per 1000 atoms (including hydrogen atoms). The all-atom clashscore for this structure is 3.

All (13) close contacts within the same asymmetric unit are listed below, sorted by their clash magnitude.

Atom-1	Atom-2	Interatomic distance (Å)	Clash overlap (Å)
1:B:22:TYR:CZ	4:B:1777:HOH:O	2.10	0.78
1:B:22:TYR:CE2	4:B:1777:HOH:O	2.32	0.74
1:B:107:GLN:NE2	4:B:1660:HOH:O	2.15	0.73
1:B:49:ASN:HA	1:B:84:ARG:NH1	2.22	0.55
1:B:60[B]:TYR:CE2	1:B:62[B]:SER:HA	2.45	0.50
1:B:40[B]:THR:HG22	4:B:646:HOH:O	2.14	0.48
1:B:22:TYR:CE2	1:B:133:VAL:HG21	2.52	0.45
1:B:22:TYR:CD2	1:B:133:VAL:HG21	2.52	0.44
1:B:21:TRP:CZ3	1:B:132:LYS:HB2	2.54	0.43
1:B:49:ASN:OD1	1:B:84:ARG:NH1	2.53	0.41
1:B:61[A]:ASP:OD2	1:B:61[A]:ASP:C	2.63	0.41
1:D:61[B]:ASP:O	1:D:64[B]:PRO:HD3	2.21	0.40
1:D:108:TRP:CZ2	1:D:126:GLY:HA3	2.57	0.40

All (18) symmetry-related close contacts are listed below. The label for Atom-2 includes the symmetry operator and encoded unit-cell translations to be applied.

Atom-1	Atom-2	Interatomic distance (Å)	Clash overlap (Å)
4:D:1782:HOH:O	4:D:1782:HOH:O[3_655]	0.58	1.62
4:D:2228:HOH:O	4:D:2228:HOH:O[4_556]	0.89	1.31
4:D:2228:HOH:O	4:D:2228:HOH:H1[4_556]	0.37	1.23
4:D:1780:HOH:O	4:D:1782:HOH:O[7_555]	1.38	0.82
4:D:1782:HOH:O	4:D:1782:HOH:H1[3_655]	0.99	0.61
4:B:549:HOH:H1	4:B:671[A]:HOH:H1[4_555]	1.01	0.59
4:D:1780:HOH:H1	4:D:1782:HOH:O[7_555]	1.05	0.55
4:D:2228:HOH:H1	4:D:2228:HOH:H1[4_556]	1.14	0.46
1:D:64[A]:PRO:HG2	4:B:2059:HOH:H1[6_554]	1.23	0.37

Continued on next page...

Continued from previous page...

Atom-1	Atom-2	Interatomic distance (Å)	Clash overlap (Å)
4:D:1780:HOH:H1	4:D:1782:HOH:H1[5_455]	1.23	0.37
4:D:1782:HOH:O	4:D:1782:HOH:H2[3_655]	1.26	0.34
4:D:2228:HOH:H1	4:D:2228:HOH:H2[4_556]	1.31	0.29
4:D:2228:HOH:O	4:D:2228:HOH:H2[4_556]	1.38	0.22
1:B:22:TYR:OH	4:B:1719:HOH:H2[3_655]	1.52	0.08
4:D:2211:HOH:O	4:D:2269:HOH:H2[4_556]	1.53	0.07
1:B:121:LYS:HZ2	3:D:300[A]:SO4:O3[4_555]	1.54	0.06
1:D:15:ALA:O	4:B:1605:HOH:H2[6_554]	1.56	0.04
3:D:300[A]:SO4:O1	4:D:1965:HOH:H1[4_556]	1.57	0.03

## 5.3 Torsion angles [i](#)

### 5.3.1 Protein backbone [i](#)

In the following table, the Percentiles column shows the percent Ramachandran outliers of the chain as a percentile score with respect to all X-ray entries followed by that with respect to entries of similar resolution.

The Analysed column shows the number of residues for which the backbone conformation was analysed, and the total number of residues.

Mol	Chain	Analysed	Favoured	Allowed	Outliers	Percentiles
1	B	137/135 (102%)	132 (96%)	3 (2%)	2 (2%)	8 1
1	D	130/135 (96%)	124 (95%)	5 (4%)	1 (1%)	16 4
All	All	267/270 (99%)	256 (96%)	8 (3%)	3 (1%)	16 2

All (3) Ramachandran outliers are listed below:

Mol	Chain	Res	Type
1	D	15	ALA
1	B	64[A]	PRO
1	B	64[B]	PRO

### 5.3.2 Protein sidechains [i](#)

In the following table, the Percentiles column shows the percent sidechain outliers of the chain as a percentile score with respect to all X-ray entries followed by that with respect to entries of similar resolution.

The Analysed column shows the number of residues for which the sidechain conformation was

analysed, and the total number of residues.

Mol	Chain	Analysed	Rotameric	Outliers	Percentiles	
1	B	103/100 (103%)	100 (97%)	3 (3%)	37	10
1	D	96/100 (96%)	95 (99%)	1 (1%)	68	45
All	All	199/200 (100%)	195 (98%)	4 (2%)	53	20

All (4) residues with a non-rotameric sidechain are listed below:

Mol	Chain	Res	Type
1	B	62[A]	SER
1	B	62[B]	SER
1	B	95	GLN
1	D	101	GLU

Sometimes sidechains can be flipped to improve hydrogen bonding and reduce clashes. All (1) such sidechains are listed below:

Mol	Chain	Res	Type
1	B	95	GLN

### 5.3.3 RNA [i](#)

There are no RNA molecules in this entry.

## 5.4 Non-standard residues in protein, DNA, RNA chains [i](#)

There are no non-standard protein/DNA/RNA residues in this entry.

## 5.5 Carbohydrates [i](#)

There are no oligosaccharides in this entry.

## 5.6 Ligand geometry [i](#)

3 ligands are modelled in this entry.

In the following table, the Counts columns list the number of bonds (or angles) for which Mogul statistics could be retrieved, the number of bonds (or angles) that are observed in the model and the number of bonds (or angles) that are defined in the Chemical Component Dictionary. The Link column lists molecule types, if any, to which the group is linked. The Z score for a bond

length (or angle) is the number of standard deviations the observed value is removed from the expected value. A bond length (or angle) with  $|Z| > 2$  is considered an outlier worth inspection. RMSZ is the root-mean-square of all Z scores of the bond lengths (or angles).

Mol	Type	Chain	Res	Link	Bond lengths			Bond angles		
					Counts	RMSZ	# Z  > 2	Counts	RMSZ	# Z  > 2
3	SO4	D	300[A]	-	4,4,4	0.61	0	6,6,6	0.28	0
2	BTN	D	301	-	17,17,17	1.24	2 (11%)	23,23,23	1.76	6 (26%)
2	BTN	B	300	-	17,17,17	1.25	4 (23%)	23,23,23	2.12	6 (26%)

In the following table, the Chirals column lists the number of chiral outliers, the number of chiral centers analysed, the number of these observed in the model and the number defined in the Chemical Component Dictionary. Similar counts are reported in the Torsion and Rings columns. '2' means no outliers of that kind were identified.

Mol	Type	Chain	Res	Link	Chirals	Torsions	Rings
2	BTN	D	301	-	-	2/7/28/28	0/2/2/2
2	BTN	B	300	-	-	1/7/28/28	0/2/2/2

All (6) bond length outliers are listed below:

Mol	Chain	Res	Type	Atoms	Z	Observed(Å)	Ideal(Å)
2	D	301	BTN	O12-C11	-2.52	1.22	1.30
2	B	300	BTN	C2-S1	-2.37	1.78	1.82
2	B	300	BTN	O12-C11	-2.35	1.23	1.30
2	D	301	BTN	C10-C11	2.20	1.55	1.50
2	B	300	BTN	C2-C4	2.09	1.59	1.53
2	B	300	BTN	C7-C2	2.00	1.58	1.52

All (12) bond angle outliers are listed below:

Mol	Chain	Res	Type	Atoms	Z	Observed(°)	Ideal(°)
2	B	300	BTN	C6-C5-N1	-5.44	106.17	113.18
2	B	300	BTN	C4-C2-S1	5.06	110.78	105.03
2	D	301	BTN	C2-C4-N2	-3.84	109.28	113.34
2	D	301	BTN	C6-C5-N1	-3.76	108.34	113.18
2	B	300	BTN	C5-C6-S1	3.43	110.78	106.06
2	B	300	BTN	C2-C4-N2	-2.97	110.19	113.34
2	D	301	BTN	C4-C2-S1	2.78	108.19	105.03
2	D	301	BTN	C5-C6-S1	2.70	109.78	106.06
2	D	301	BTN	C7-C2-S1	2.37	119.61	112.78
2	B	300	BTN	C2-C4-C5	-2.33	106.04	108.89
2	B	300	BTN	C8-C7-C2	-2.24	108.89	114.04
2	D	301	BTN	N2-C3-N1	2.21	111.40	108.85

There are no chirality outliers.

All (3) torsion outliers are listed below:

Mol	Chain	Res	Type	Atoms
2	B	300	BTN	C4-C2-C7-C8
2	D	301	BTN	C9-C10-C11-O12
2	D	301	BTN	C9-C10-C11-O11

There are no ring outliers.

1 monomer is involved in 2 short contacts:

Mol	Chain	Res	Type	Clashes	Symm-Clashes
3	D	300[A]	SO4	0	2

## 5.7 Other polymers [i](#)

There are no such residues in this entry.

## 5.8 Polymer linkage issues [i](#)

There are no chain breaks in this entry.

## 6 Fit of model and data [i](#)

### 6.1 Protein, DNA and RNA chains [i](#)

In the following table, the column labelled ‘#RSRZ > 2’ contains the number (and percentage) of RSRZ outliers, followed by percent RSRZ outliers for the chain as percentile scores relative to all X-ray entries and entries of similar resolution. The OWAB column contains the minimum, median, 95<sup>th</sup> percentile and maximum values of the occupancy-weighted average B-factor per residue. The column labelled ‘Q < 0.9’ lists the number of (and percentage) of residues with an average occupancy less than 0.9.

Mol	Chain	Analysed	<RSRZ>	#RSRZ>2	OWAB(Å <sup>2</sup> )	Q<0.9
1	B	119/135 (88%)	-0.28	5 (4%) 40 44	6, 20, 37, 54	23 (19%)
1	D	119/135 (88%)	-0.10	9 (7%) 20 21	1, 22, 38, 53	20 (16%)
All	All	238/270 (88%)	-0.19	14 (5%) 28 30	1, 21, 38, 54	43 (18%)

All (14) RSRZ outliers are listed below:

Mol	Chain	Res	Type	RSRZ
1	D	63[A]	ALA	5.8
1	D	15	ALA	4.5
1	D	13	ALA	4.1
1	D	64[A]	PRO	3.5
1	B	135	PRO	2.9
1	B	99	GLY	2.7
1	B	63[A]	ALA	2.7
1	D	68[A]	GLY	2.6
1	B	64[A]	PRO	2.6
1	D	62[A]	SER	2.6
1	D	67[A]	ASP	2.5
1	D	14	GLU	2.4
1	B	62[A]	SER	2.2
1	D	133	VAL	2.1

### 6.2 Non-standard residues in protein, DNA, RNA chains [i](#)

There are no non-standard protein/DNA/RNA residues in this entry.

### 6.3 Carbohydrates [i](#)

There are no oligosaccharides in this entry.

## 6.4 Ligands [i](#)

In the following table, the Atoms column lists the number of modelled atoms in the group and the number defined in the chemical component dictionary. The B-factors column lists the minimum, median, 95<sup>th</sup> percentile and maximum values of B factors of atoms in the group. The column labelled 'Q< 0.9' lists the number of atoms with occupancy less than 0.9.

Mol	Type	Chain	Res	Atoms	RSCC	RSR	B-factors(Å <sup>2</sup> )	Q<0.9
3	SO4	D	300[A]	5/5	0.62	0.13	67,68,68,69	5
2	BTN	D	301	16/16	0.96	0.05	16,19,22,25	0
2	BTN	B	300	16/16	0.98	0.04	15,18,23,25	0

## 6.5 Other polymers [i](#)

There are no such residues in this entry.