



# Full wwPDB X-ray Structure Validation Report ⓘ

Mar 5, 2026 – 12:53 PM UTC

PDB ID : 4RTN / pdb\_00004rtn  
Title : Complex of Escherichia coli DNA Adenine Methyltransferase (DAM) with AdoHcy and with DNA Containing Proximal Pap Regulon Sequence  
Authors : Horton, J.R.; Cheng, X.  
Deposited on : 2014-11-15  
Resolution : 2.59 Å(reported)

This is a Full wwPDB X-ray Structure Validation Report for a publicly released PDB entry.

We welcome your comments at [validation@mail.wwpdb.org](mailto:validation@mail.wwpdb.org)

A user guide is available at

<https://www.wwpdb.org/validation/2017/XrayValidationReportHelp>

with specific help available everywhere you see the ⓘ symbol.

The types of validation reports are described at

<http://www.wwpdb.org/validation/2017/FAQs#types>.

---

The following versions of software and data (see [references ⓘ](#)) were used in the production of this report:

MolProbity : 4-5-2 with Phenix2.0  
Mogul : 2022.3.0, CSD as543be (2022)  
Xtrriage (Phenix) : 2.0  
EDS : 3.0  
Buster-report : wwPDB partial adaption of 1.1.7 (2018)  
Percentile statistics : 20250101.v01 (using entries in the PDB archive January 1st 2025)  
CCP4 : 9.0.010 (Gargrove)  
Density-Fitness : 1.0.12  
Ideal geometry (proteins) : Engh & Huber (2001)  
Ideal geometry (DNA, RNA) : Parkinson et al. (1996)  
Validation Pipeline (wwPDB-VP) : 2.49

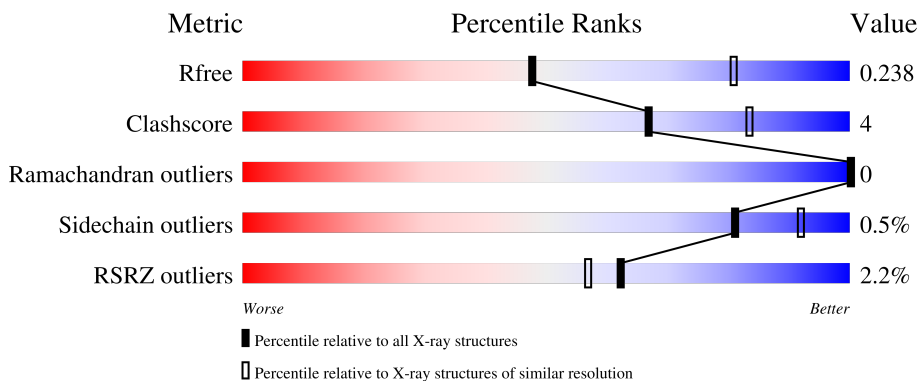
# 1 Overall quality at a glance i

The following experimental techniques were used to determine the structure:

*X-RAY DIFFRACTION*

The reported resolution of this entry is 2.59 Å.

Percentile scores (ranging between 0-100) for global validation metrics of the entry are shown in the following graphic. The table shows the number of entries on which the scores are based.



Metric	Whole archive (#Entries)	Similar resolution (#Entries, resolution range(Å))
$R_{free}$	180053	4008 (2.60-2.60)
Clashscore	190562	4347 (2.60-2.60)
Ramachandran outliers	187476	4277 (2.60-2.60)
Sidechain outliers	187428	4277 (2.60-2.60)
RSRZ outliers	180081	4008 (2.60-2.60)

The table below summarises the geometric issues observed across the polymeric chains and their fit to the electron density. The red, orange, yellow and green segments of the lower bar indicate the fraction of residues that contain outliers for  $\geq 3$ , 2, 1 and 0 types of geometric quality criteria respectively. A grey segment represents the fraction of residues that are not modelled. The numeric value for each fraction is indicated below the corresponding segment, with a dot representing fractions  $\leq 5\%$ . The upper red bar (where present) indicates the fraction of residues that have poor fit to the electron density. The numeric value is given above the bar.

Mol	Chain	Length	Quality of chain
1	A	298	<div style="display: flex; align-items: center;"> <div style="width: 2%; height: 10px; background-color: red; margin-right: 5px;"></div> <div style="width: 73%; height: 10px; background-color: green; margin-right: 5px;"></div> <div style="width: 10%; height: 10px; background-color: yellow; margin-right: 5px;"></div> <div style="width: 16%; height: 10px; background-color: grey;"></div> </div> <p style="margin-left: 20px;">2%      73%      10%      16%</p>
2	F	11	<div style="width: 100%; height: 10px; background-color: green;"></div> <p style="margin-left: 20px;">100%</p>
3	G	11	<div style="width: 100%; height: 10px; background-color: green;"></div> <p style="margin-left: 20px;">100%</p>

## 2 Entry composition

There are 5 unique types of molecules in this entry. The entry contains 2498 atoms, of which 0 are hydrogens and 0 are deuteriums.

In the tables below, the ZeroOcc column contains the number of atoms modelled with zero occupancy, the AltConf column contains the number of residues with at least one atom in alternate conformation and the Trace column contains the number of residues modelled with at most 2 atoms.

- Molecule 1 is a protein called DNA adenine methylase.

Mol	Chain	Residues	Atoms					ZeroOcc	AltConf	Trace
			Total	C	N	O	S			
1	A	249	1967	1274	325	361	7	0	0	0

There are 21 discrepancies between the modelled and reference sequences:

Chain	Residue	Modelled	Actual	Comment	Reference
A	-19	MET	-	expression tag	UNP H0Q7C9
A	-18	GLY	-	expression tag	UNP H0Q7C9
A	-17	SER	-	expression tag	UNP H0Q7C9
A	-16	SER	-	expression tag	UNP H0Q7C9
A	-15	HIS	-	expression tag	UNP H0Q7C9
A	-14	HIS	-	expression tag	UNP H0Q7C9
A	-13	HIS	-	expression tag	UNP H0Q7C9
A	-12	HIS	-	expression tag	UNP H0Q7C9
A	-11	HIS	-	expression tag	UNP H0Q7C9
A	-10	HIS	-	expression tag	UNP H0Q7C9
A	-9	SER	-	expression tag	UNP H0Q7C9
A	-8	SER	-	expression tag	UNP H0Q7C9
A	-7	GLY	-	expression tag	UNP H0Q7C9
A	-6	LEU	-	expression tag	UNP H0Q7C9
A	-5	VAL	-	expression tag	UNP H0Q7C9
A	-4	PRO	-	expression tag	UNP H0Q7C9
A	-3	ARG	-	expression tag	UNP H0Q7C9
A	-2	GLY	-	expression tag	UNP H0Q7C9
A	-1	SER	-	expression tag	UNP H0Q7C9
A	0	HIS	-	expression tag	UNP H0Q7C9
A	175	SER	ALA	SEE REMARK 999	UNP H0Q7C9

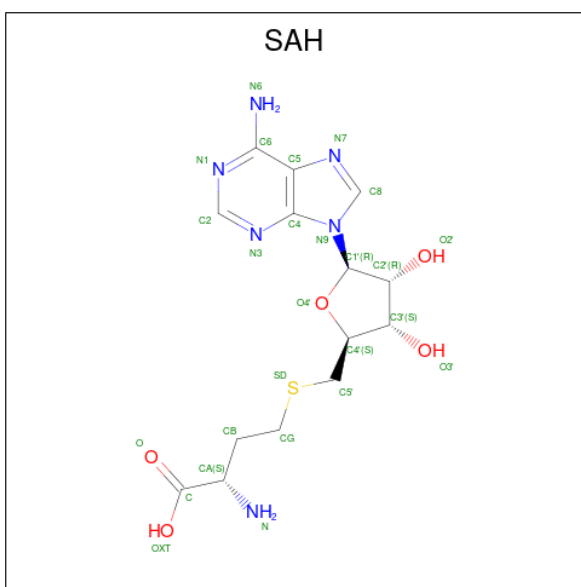
- Molecule 2 is a DNA chain called DNA (5'-D(\*TP\*TP\*TP\*AP\*AP\*AP\*GP\*AP\*TP\*CP\*G)-3').

Mol	Chain	Residues	Atoms					ZeroOcc	AltConf	Trace
			Total	C	N	O	P			
2	F	11	224	109	41	64	10	0	0	0

- Molecule 3 is a DNA chain called DNA (5'-D(\*AP\*CP\*GP\*AP\*TP\*CP\*TP\*TP\*TP\*AP\*A)-3').

Mol	Chain	Residues	Atoms					ZeroOcc	AltConf	Trace
			Total	C	N	O	P			
3	G	11	221	108	39	64	10	0	0	0

- Molecule 4 is S-ADENOSYL-L-HOMOCYSTEINE (CCD ID: SAH) (formula: C<sub>14</sub>H<sub>20</sub>N<sub>6</sub>O<sub>5</sub>S).



Mol	Chain	Residues	Atoms					ZeroOcc	AltConf
			Total	C	N	O	S		
4	A	1	52	28	12	10	2	0	1

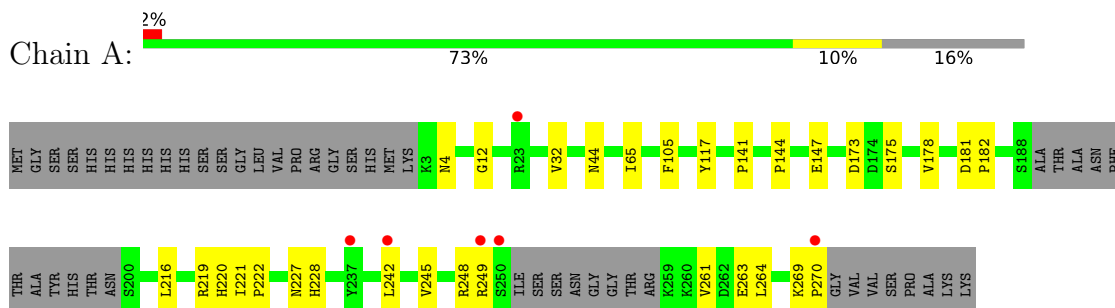
- Molecule 5 is water.

Mol	Chain	Residues	Atoms	ZeroOcc	AltConf
5	A	29	Total O 29 29	0	0
5	F	1	Total O 1 1	0	0
5	G	4	Total O 4 4	0	0

### 3 Residue-property plots [i](#)

These plots are drawn for all protein, RNA, DNA and oligosaccharide chains in the entry. The first graphic for a chain summarises the proportions of the various outlier classes displayed in the second graphic. The second graphic shows the sequence view annotated by issues in geometry and electron density. Residues are color-coded according to the number of geometric quality criteria for which they contain at least one outlier: green = 0, yellow = 1, orange = 2 and red = 3 or more. A red dot above a residue indicates a poor fit to the electron density ( $RSRZ > 2$ ). Stretches of 2 or more consecutive residues without any outlier are shown as a green connector. Residues present in the sample, but not in the model, are shown in grey.

- Molecule 1: DNA adenine methylase



- Molecule 2: DNA (5'-D(\*TP\*TP\*TP\*AP\*AP\*AP\*GP\*AP\*TP\*CP\*G)-3')



There are no outlier residues recorded for this chain.

- Molecule 3: DNA (5'-D(\*AP\*CP\*GP\*AP\*TP\*CP\*TP\*TP\*TP\*AP\*A)-3')



There are no outlier residues recorded for this chain.

## 4 Data and refinement statistics

Property	Value	Source
Space group	P 21 21 21	Depositor
Cell constants a, b, c, $\alpha$ , $\beta$ , $\gamma$	36.20Å 63.48Å 144.05Å 90.00° 90.00° 90.00°	Depositor
Resolution (Å)	29.00 – 2.59 29.00 – 2.59	Depositor EDS
% Data completeness (in resolution range)	99.8 (29.00-2.59) 95.9 (29.00-2.59)	Depositor EDS
$R_{merge}$	0.08	Depositor
$R_{sym}$	(Not available)	Depositor
$\langle I/\sigma(I) \rangle$ <sup>1</sup>	4.16 (at 2.61Å)	Xtrriage
Refinement program	PHENIX (phenix.refine: 1.9_1692)	Depositor
R, $R_{free}$	0.205 , 0.240 0.213 , 0.238	Depositor DCC
$R_{free}$ test set	566 reflections (5.21%)	wwPDB-VP
Wilson B-factor (Å <sup>2</sup> )	40.8	Xtrriage
Anisotropy	0.335	Xtrriage
Bulk solvent $k_{sol}$ (e/Å <sup>3</sup> ), $B_{sol}$ (Å <sup>2</sup> )	0.33 , 45.9	EDS
L-test for twinning <sup>2</sup>	$\langle  L  \rangle = 0.48$ , $\langle L^2 \rangle = 0.31$	Xtrriage
Estimated twinning fraction	No twinning to report.	Xtrriage
$F_o, F_c$ correlation	0.93	EDS
Total number of atoms	2498	wwPDB-VP
Average B, all atoms (Å <sup>2</sup> )	47.0	wwPDB-VP

Xtrriage's analysis on translational NCS is as follows: *The largest off-origin peak in the Patterson function is 6.30% of the height of the origin peak. No significant pseudotranslation is detected.*

<sup>1</sup>Intensities estimated from amplitudes.

<sup>2</sup>Theoretical values of  $\langle |L| \rangle$ ,  $\langle L^2 \rangle$  for acentric reflections are 0.5, 0.333 respectively for untwinned datasets, and 0.375, 0.2 for perfectly twinned datasets.

## 5 Model quality [i](#)

### 5.1 Standard geometry [i](#)

Bond lengths and bond angles in the following residue types are not validated in this section: SAH

The Z score for a bond length (or angle) is the number of standard deviations the observed value is removed from the expected value. A bond length (or angle) with  $|Z| > 5$  is considered an outlier worth inspection. RMSZ is the root-mean-square of all Z scores of the bond lengths (or angles).

Mol	Chain	Bond lengths		Bond angles	
		RMSZ	# $ Z  > 5$	RMSZ	# $ Z  > 5$
1	A	0.53	2/2022 (0.1%)	0.77	4/2756 (0.1%)
2	F	0.19	0/251	0.38	0/386
3	G	0.19	0/247	0.39	0/379
All	All	0.48	2/2520 (0.1%)	0.70	4/3521 (0.1%)

All (2) bond length outliers are listed below:

Mol	Chain	Res	Type	Atoms	Z	Observed(Å)	Ideal(Å)
1	A	222	PRO	N-CD	5.34	1.55	1.47
1	A	221	ILE	C-N	5.04	1.40	1.33

All (4) bond angle outliers are listed below:

Mol	Chain	Res	Type	Atoms	Z	Observed(°)	Ideal(°)
1	A	248	ARG	N-CA-C	7.06	121.28	111.74
1	A	221	ILE	CA-C-N	-6.08	113.71	119.85
1	A	221	ILE	C-N-CA	-6.08	113.71	119.85
1	A	249	ARG	N-CA-C	5.61	117.80	108.99

There are no chirality outliers.

There are no planarity outliers.

### 5.2 Too-close contacts [i](#)

In the following table, the Non-H and H(model) columns list the number of non-hydrogen atoms and hydrogen atoms in the chain respectively. The H(added) column lists the number of hydrogen atoms added and optimized by MolProbity. The Clashes column lists the number of clashes within the asymmetric unit, whereas Symm-Clashes lists symmetry-related clashes.

Mol	Chain	Non-H	H(model)	H(added)	Clashes	Symm-Clashes
1	A	1967	0	1803	17	0
2	F	224	0	127	0	0
3	G	221	0	127	0	0
4	A	52	0	38	3	0
5	A	29	0	0	0	0
5	F	1	0	0	0	0
5	G	4	0	0	0	0
All	All	2498	0	2095	17	0

The all-atom clashscore is defined as the number of clashes found per 1000 atoms (including hydrogen atoms). The all-atom clashscore for this structure is 4.

All (17) close contacts within the same asymmetric unit are listed below, sorted by their clash magnitude.

Atom-1	Atom-2	Interatomic distance (Å)	Clash overlap (Å)
1:A:181:ASP:OD1	4:A:301[B]:SAH:N	2.29	0.66
1:A:182:PRO:O	4:A:301[A]:SAH:N	2.37	0.58
1:A:12:GLY:HA3	4:A:301[A]:SAH:HB2	1.86	0.57
1:A:242:LEU:HB2	1:A:264:LEU:HD11	1.89	0.55
1:A:173:ASP:OD1	1:A:175:SER:N	2.33	0.50
1:A:32:VAL:HB	1:A:178:VAL:HG22	1.94	0.49
1:A:216:LEU:HD23	1:A:219:ARG:NH2	2.28	0.49
1:A:220:HIS:CD2	1:A:220:HIS:N	2.80	0.48
1:A:65:ILE:HD13	1:A:105:PHE:HA	1.95	0.48
1:A:4:ASN:N	1:A:44:ASN:OD1	2.46	0.47
1:A:144:PRO:HB2	1:A:147:GLU:HB2	1.96	0.47
1:A:245:VAL:HG23	1:A:263:GLU:HB3	1.99	0.45
1:A:117:TYR:CE2	1:A:141:PRO:HG2	2.52	0.45
1:A:219:ARG:O	1:A:220:HIS:HB2	2.17	0.43
1:A:227:ASN:OD1	1:A:228:HIS:N	2.46	0.41
1:A:269:LYS:HA	1:A:270:PRO:HD3	1.81	0.41
1:A:219:ARG:O	1:A:220:HIS:CB	2.70	0.40

There are no symmetry-related clashes.

## 5.3 Torsion angles [i](#)

### 5.3.1 Protein backbone [i](#)

In the following table, the Percentiles column shows the percent Ramachandran outliers of the chain as a percentile score with respect to all X-ray entries followed by that with respect to entries of similar resolution.

The Analysed column shows the number of residues for which the backbone conformation was analysed, and the total number of residues.

Mol	Chain	Analysed	Favoured	Allowed	Outliers	Percentiles	
1	A	243/298 (82%)	236 (97%)	7 (3%)	0	100	100

There are no Ramachandran outliers to report.

### 5.3.2 Protein sidechains [i](#)

In the following table, the Percentiles column shows the percent sidechain outliers of the chain as a percentile score with respect to all X-ray entries followed by that with respect to entries of similar resolution.

The Analysed column shows the number of residues for which the sidechain conformation was analysed, and the total number of residues.

Mol	Chain	Analysed	Rotameric	Outliers	Percentiles	
1	A	194/257 (76%)	193 (100%)	1 (0%)	81	92

All (1) residues with a non-rotameric sidechain are listed below:

Mol	Chain	Res	Type
1	A	261	VAL

Sometimes sidechains can be flipped to improve hydrogen bonding and reduce clashes. All (3) such sidechains are listed below:

Mol	Chain	Res	Type
1	A	4	ASN
1	A	150	HIS
1	A	220	HIS

### 5.3.3 RNA [i](#)

There are no RNA molecules in this entry.

## 5.4 Non-standard residues in protein, DNA, RNA chains [i](#)

There are no non-standard protein/DNA/RNA residues in this entry.

## 5.5 Carbohydrates [i](#)

There are no oligosaccharides in this entry.

## 5.6 Ligand geometry [i](#)

2 ligands are modelled in this entry.

In the following table, the Counts columns list the number of bonds (or angles) for which Mogul statistics could be retrieved, the number of bonds (or angles) that are observed in the model and the number of bonds (or angles) that are defined in the Chemical Component Dictionary. The Link column lists molecule types, if any, to which the group is linked. The Z score for a bond length (or angle) is the number of standard deviations the observed value is removed from the expected value. A bond length (or angle) with  $|Z| > 2$  is considered an outlier worth inspection. RMSZ is the root-mean-square of all Z scores of the bond lengths (or angles).

Mol	Type	Chain	Res	Link	Bond lengths			Bond angles		
					Counts	RMSZ	# Z  > 2	Counts	RMSZ	# Z  > 2
4	SAH	A	301[B]	-	27,28,28	1.10	4 (14%)	36,40,40	2.01	9 (25%)
4	SAH	A	301[A]	-	27,28,28	1.10	4 (14%)	36,40,40	2.04	9 (25%)

In the following table, the Chirals column lists the number of chiral outliers, the number of chiral centers analysed, the number of these observed in the model and the number defined in the Chemical Component Dictionary. Similar counts are reported in the Torsion and Rings columns. '-' means no outliers of that kind were identified.

Mol	Type	Chain	Res	Link	Chirals	Torsions	Rings
4	SAH	A	301[B]	-	-	4/15/31/31	0/3/3/3
4	SAH	A	301[A]	-	-	3/15/31/31	0/3/3/3

All (8) bond length outliers are listed below:

Mol	Chain	Res	Type	Atoms	Z	Observed(Å)	Ideal(Å)
4	A	301[B]	SAH	C2-N1	2.63	1.38	1.33
4	A	301[A]	SAH	C2-N3	2.55	1.38	1.33
4	A	301[A]	SAH	C2-N1	2.54	1.38	1.33
4	A	301[B]	SAH	C2-N3	2.54	1.38	1.33
4	A	301[A]	SAH	OXT-C	-2.23	1.23	1.30
4	A	301[B]	SAH	OXT-C	-2.23	1.23	1.30
4	A	301[B]	SAH	C8-N7	2.15	1.35	1.31
4	A	301[A]	SAH	C8-N7	2.12	1.35	1.31

All (18) bond angle outliers are listed below:

Mol	Chain	Res	Type	Atoms	Z	Observed(°)	Ideal(°)
4	A	301[A]	SAH	N3-C2-N1	-5.57	120.15	128.58
4	A	301[B]	SAH	N3-C2-N1	-5.46	120.32	128.58
4	A	301[B]	SAH	C5-C4-N3	-4.51	120.50	126.72
4	A	301[A]	SAH	C5-C4-N3	-4.50	120.52	126.72
4	A	301[A]	SAH	C5'-SD-CG	-4.10	90.10	102.26
4	A	301[A]	SAH	N9-C8-N7	-3.89	108.42	113.94
4	A	301[B]	SAH	N9-C8-N7	-3.77	108.59	113.94
4	A	301[B]	SAH	C5'-SD-CG	-3.67	91.38	102.26
4	A	301[A]	SAH	C2-N3-C4	3.44	120.23	111.83
4	A	301[B]	SAH	C2-N3-C4	3.36	120.05	111.83
4	A	301[A]	SAH	C5-N7-C8	3.36	108.73	103.45
4	A	301[B]	SAH	C5-N7-C8	3.34	108.70	103.45
4	A	301[A]	SAH	N3-C4-N9	3.01	132.28	127.17
4	A	301[B]	SAH	N3-C4-N9	2.93	132.16	127.17
4	A	301[B]	SAH	OXT-C-O	-2.71	117.93	124.08
4	A	301[A]	SAH	OXT-C-O	-2.65	118.06	124.08
4	A	301[B]	SAH	C4-C5-N7	-2.36	107.88	110.58
4	A	301[A]	SAH	C4-C5-N7	-2.28	107.98	110.58

There are no chirality outliers.

All (7) torsion outliers are listed below:

Mol	Chain	Res	Type	Atoms
4	A	301[B]	SAH	N-CA-CB-CG
4	A	301[B]	SAH	C-CA-CB-CG
4	A	301[B]	SAH	O-C-CA-CB
4	A	301[B]	SAH	OXT-C-CA-CB
4	A	301[A]	SAH	C2'-C1'-N9-C8
4	A	301[A]	SAH	CB-CG-SD-C5'
4	A	301[A]	SAH	O4'-C1'-N9-C8

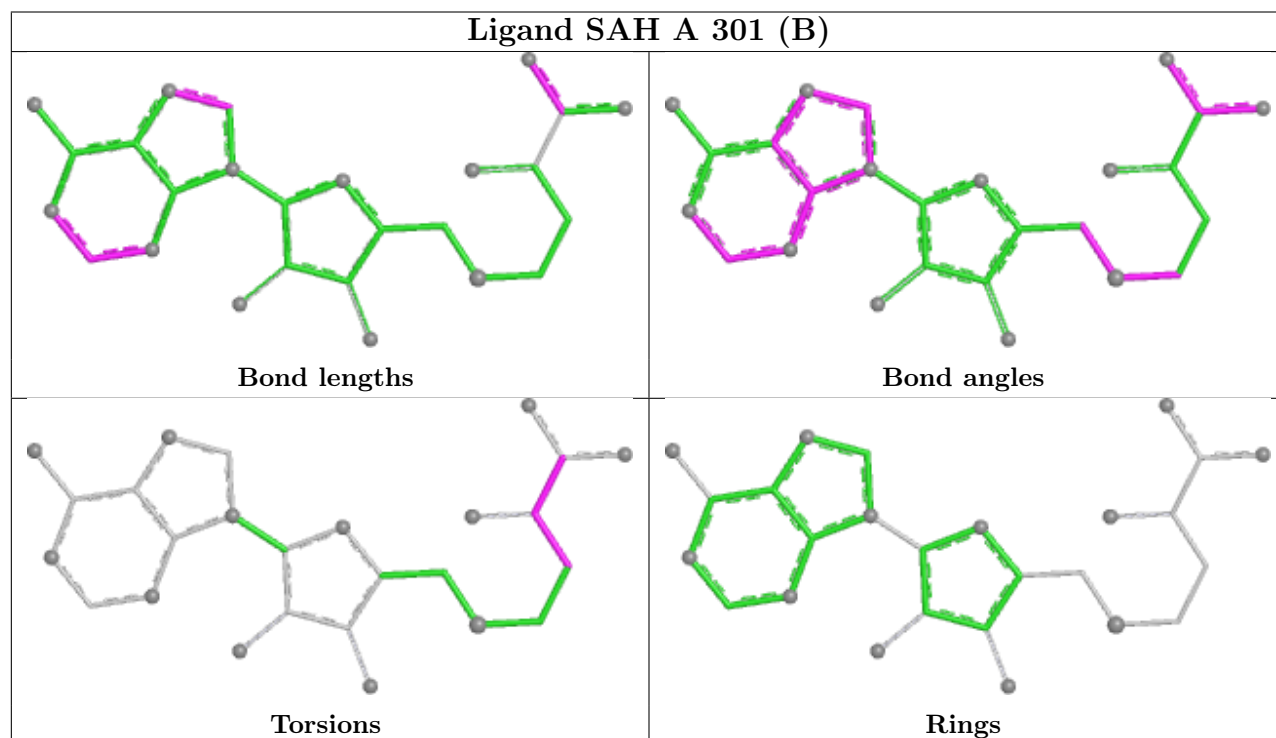
There are no ring outliers.

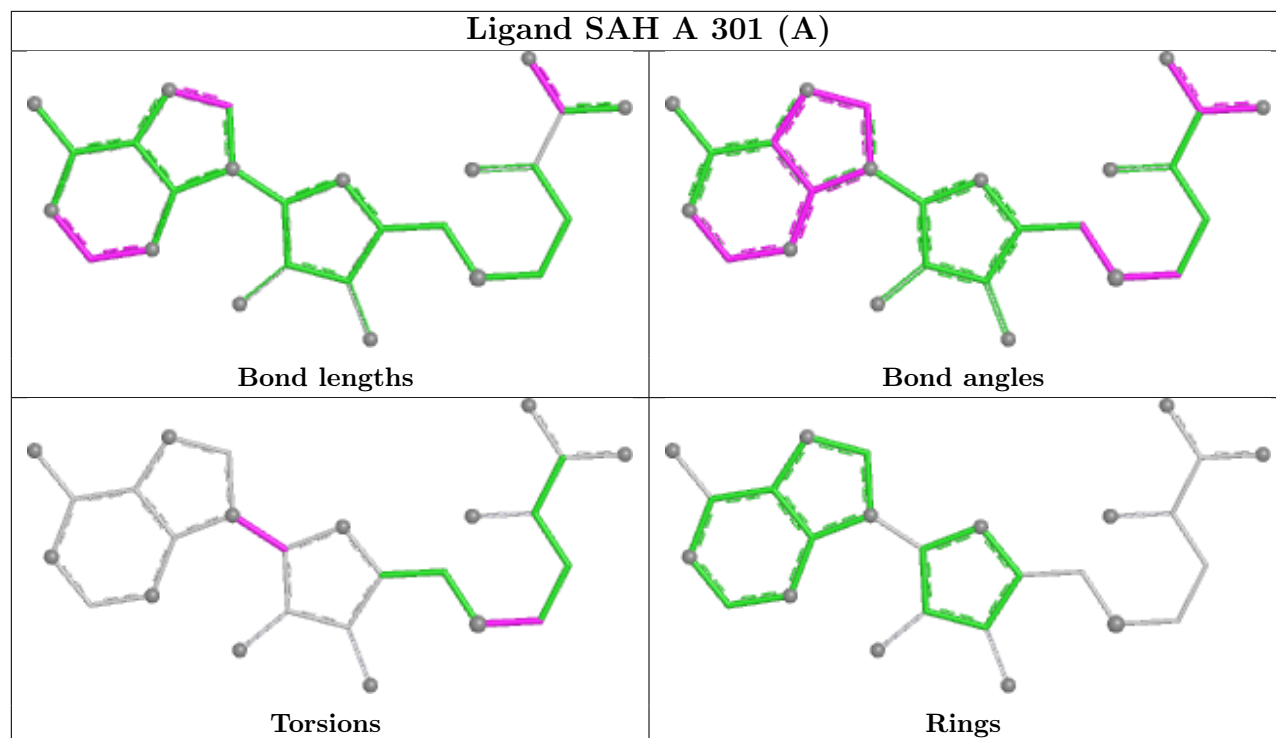
2 monomers are involved in 3 short contacts:

Mol	Chain	Res	Type	Clashes	Symm-Clashes
4	A	301[B]	SAH	1	0
4	A	301[A]	SAH	2	0

The following is a two-dimensional graphical depiction of Mogul quality analysis of bond lengths, bond angles, torsion angles, and ring geometry for all instances of the Ligand of Interest. In addition, ligands with molecular weight > 250 and outliers as shown on the validation Tables will also be included. For torsion angles, if less than 5% of the Mogul distribution of torsion angles is

within 10 degrees of the torsion angle in question, then that torsion angle is considered an outlier. Any bond that is central to one or more torsion angles identified as an outlier by Mogul will be highlighted in the graph. For rings, the root-mean-square deviation (RMSD) between the ring in question and similar rings identified by Mogul is calculated over all ring torsion angles. If the average RMSD is greater than 60 degrees and the minimal RMSD between the ring in question and any Mogul-identified rings is also greater than 60 degrees, then that ring is considered an outlier. The outliers are highlighted in purple. The color gray indicates Mogul did not find sufficient equivalents in the CSD to analyse the geometry.





## 5.7 Other polymers [i](#)

There are no such residues in this entry.

## 5.8 Polymer linkage issues [i](#)

There are no chain breaks in this entry.

## 6 Fit of model and data [i](#)

### 6.1 Protein, DNA and RNA chains [i](#)

In the following table, the column labelled ‘#RSRZ> 2’ contains the number (and percentage) of RSRZ outliers, followed by percent RSRZ outliers for the chain as percentile scores relative to all X-ray entries and entries of similar resolution. The OWAB column contains the minimum, median, 95<sup>th</sup> percentile and maximum values of the occupancy-weighted average B-factor per residue. The column labelled ‘Q< 0.9’ lists the number of (and percentage) of residues with an average occupancy less than 0.9.

Mol	Chain	Analysed	<RSRZ>	#RSRZ>2	OWAB(Å <sup>2</sup> )	Q<0.9
1	A	249/298 (83%)	0.13	6 (2%) 59 54	24, 43, 81, 103	0
2	F	11/11 (100%)	-0.17	0 100 100	38, 50, 69, 74	0
3	G	11/11 (100%)	0.15	0 100 100	48, 56, 65, 71	0
All	All	271/320 (84%)	0.12	6 (2%) 62 57	24, 44, 80, 103	0

All (6) RSRZ outliers are listed below:

Mol	Chain	Res	Type	RSRZ
1	A	250	SER	6.2
1	A	270	PRO	3.0
1	A	249	ARG	2.6
1	A	237	TYR	2.2
1	A	23	ARG	2.1
1	A	242	LEU	2.1

### 6.2 Non-standard residues in protein, DNA, RNA chains [i](#)

There are no non-standard protein/DNA/RNA residues in this entry.

### 6.3 Carbohydrates [i](#)

There are no oligosaccharides in this entry.

### 6.4 Ligands [i](#)

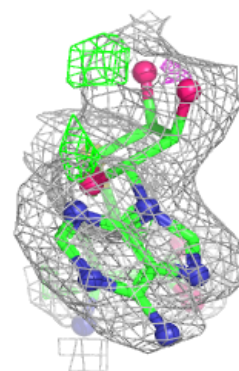
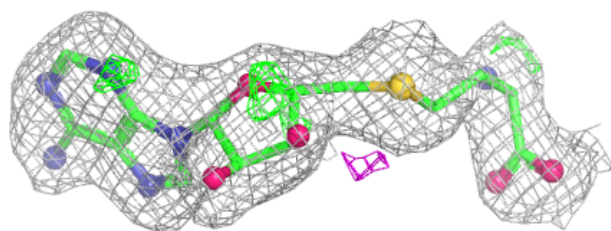
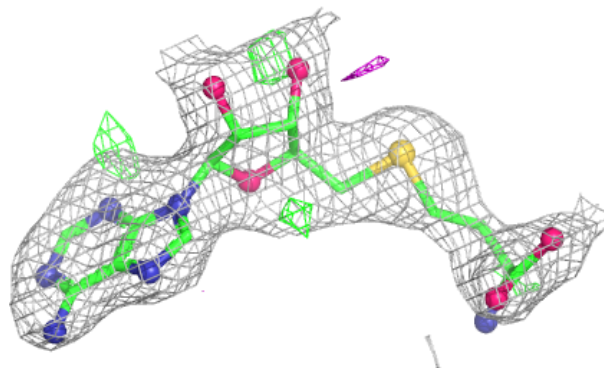
In the following table, the Atoms column lists the number of modelled atoms in the group and the number defined in the chemical component dictionary. The B-factors column lists the minimum, median, 95<sup>th</sup> percentile and maximum values of B factors of atoms in the group. The column labelled ‘Q< 0.9’ lists the number of atoms with occupancy less than 0.9.

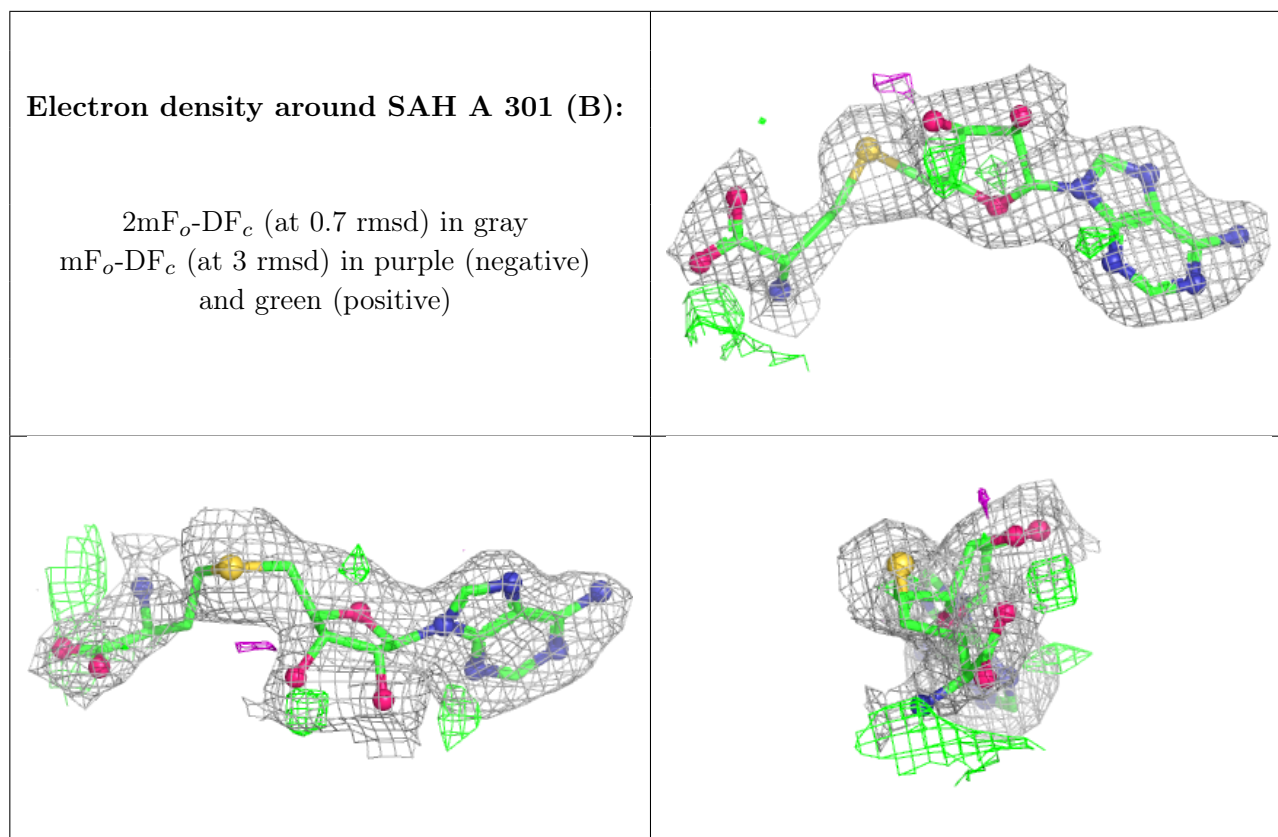
Mol	Type	Chain	Res	Atoms	RSCC	RSR	B-factors( $\text{\AA}^2$ )	Q<0.9
4	SAH	A	301[A]	26/26	0.88	0.12	26,31,32,35	26
4	SAH	A	301[B]	26/26	0.88	0.12	23,31,32,37	26

The following is a graphical depiction of the model fit to experimental electron density of all instances of the Ligand of Interest. In addition, ligands with molecular weight > 250 and outliers as shown on the geometry validation Tables will also be included. Each fit is shown from different orientation to approximate a three-dimensional view.

**Electron density around SAH A 301 (A):**

$2mF_o-DF_c$  (at 0.7 rmsd) in gray  
 $mF_o-DF_c$  (at 3 rmsd) in purple (negative)  
 and green (positive)





## 6.5 Other polymers [i](#)

There are no such residues in this entry.