



wwPDB X-ray Structure Validation Summary Report ⓘ

Mar 6, 2026 – 07:23 PM UTC

PDB ID : 3S19 / pdb_00003s19
Title : Crystal Structure of the R262L mutant of 7-cyano-7-deazaguanine reductase, QueF from *Vibrio cholerae* complexed with preQ0
Authors : Kim, Y.; Zhou, M.; Gu, M.; Anderson, W.F.; Joachimiak, A.; Center for Structural Genomics of Infectious Diseases (CSGID)
Deposited on : 2011-05-14
Resolution : 1.50 Å(reported)

This is a wwPDB X-ray Structure Validation Summary Report for a publicly released PDB entry.

We welcome your comments at validation@mail.wwpdb.org

A user guide is available at

<https://www.wwpdb.org/validation/2017/XrayValidationReportHelp>

with specific help available everywhere you see the ⓘ symbol.

The types of validation reports are described at

<http://www.wwpdb.org/validation/2017/FAQs#types>.

The following versions of software and data (see [references ⓘ](#)) were used in the production of this report:

MolProbity : 4-5-2 with Phenix2.0
Mogul : 2022.3.0, CSD as543be (2022)
Xtriage (Phenix) : 2.0
EDS : 3.0
Percentile statistics : 20250101.v01 (using entries in the PDB archive January 1st 2025)
CCP4 : 9.0.010 (Gargrove)
Density-Fitness : 1.0.12
Ideal geometry (proteins) : Engh & Huber (2001)
Ideal geometry (DNA, RNA) : Parkinson et al. (1996)
Validation Pipeline (wwPDB-VP) : 2.49

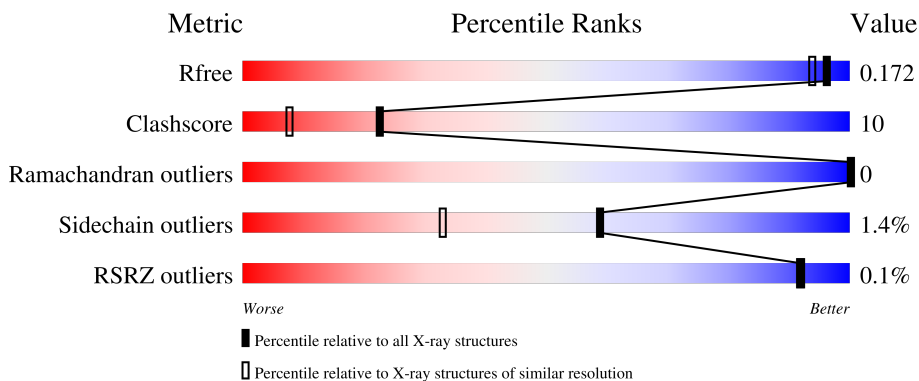
1 Overall quality at a glance

The following experimental techniques were used to determine the structure:

X-RAY DIFFRACTION

The reported resolution of this entry is 1.50 Å.

Percentile scores (ranging between 0-100) for global validation metrics of the entry are shown in the following graphic. The table shows the number of entries on which the scores are based.



Metric	Whole archive (#Entries)	Similar resolution (#Entries, resolution range(Å))
R_{free}	180053	4037 (1.50-1.50)
Clashscore	190562	4235 (1.50-1.50)
Ramachandran outliers	187476	4153 (1.50-1.50)
Sidechain outliers	187428	4150 (1.50-1.50)
RSRZ outliers	180081	4039 (1.50-1.50)

The table below summarises the geometric issues observed across the polymeric chains and their fit to the electron density. The red, orange, yellow and green segments of the lower bar indicate the fraction of residues that contain outliers for ≥ 3 , 2, 1 and 0 types of geometric quality criteria respectively. A grey segment represents the fraction of residues that are not modelled. The numeric value for each fraction is indicated below the corresponding segment, with a dot representing fractions $\leq 5\%$. The upper red bar (where present) indicates the fraction of residues that have poor fit to the electron density. The numeric value is given above the bar.

Mol	Chain	Length	Quality of chain
1	A	290	 72% 17% • 10%
1	B	290	 73% 16% • 11%
1	C	290	 73% 16% 11%
1	D	290	 71% 18% • 10%

2 Entry composition [i](#)

There are 4 unique types of molecules in this entry. The entry contains 10928 atoms, of which 0 are hydrogens and 0 are deuteriums.

In the tables below, the ZeroOcc column contains the number of atoms modelled with zero occupancy, the AltConf column contains the number of residues with at least one atom in alternate conformation and the Trace column contains the number of residues modelled with at most 2 atoms.

- Molecule 1 is a protein called NADPH-dependent 7-cyano-7-deazaguanine reductase.

Mol	Chain	Residues	Atoms						ZeroOcc	AltConf	Trace
			Total	C	N	O	S	Se			
1	A	261	2372	1472	417	470	7	6	0	33	0
1	B	259	2402	1483	429	476	8	6	0	38	0
1	C	259	2391	1476	424	477	8	6	0	38	0
1	D	261	2456	1522	433	487	8	6	0	42	0

There are 40 discrepancies between the modelled and reference sequences:

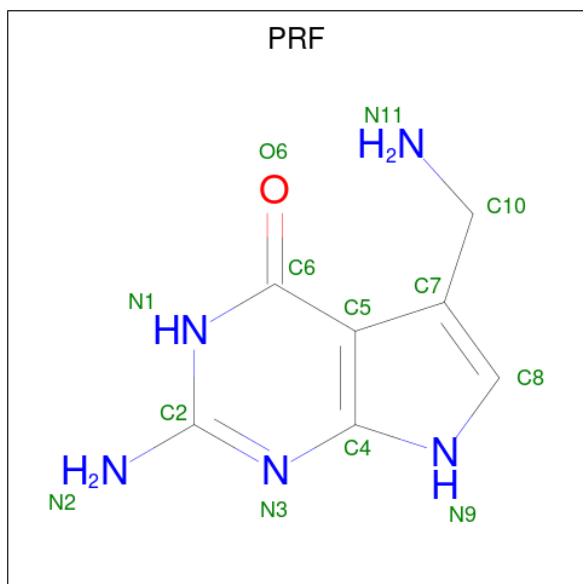
Chain	Residue	Modelled	Actual	Comment	Reference
A	-2	SER	-	expression tag	UNP Q9KTK0
A	-1	ASN	-	expression tag	UNP Q9KTK0
A	0	ALA	-	expression tag	UNP Q9KTK0
A	1	MSE	-	expression tag	UNP Q9KTK0
A	2	ASN	-	expression tag	UNP Q9KTK0
A	3	ARG	-	expression tag	UNP Q9KTK0
A	4	LEU	-	expression tag	UNP Q9KTK0
A	5	LYS	-	expression tag	UNP Q9KTK0
A	6	ASN	-	expression tag	UNP Q9KTK0
A	262	LEU	ARG	engineered mutation	UNP Q9KTK0
B	-2	SER	-	expression tag	UNP Q9KTK0
B	-1	ASN	-	expression tag	UNP Q9KTK0
B	0	ALA	-	expression tag	UNP Q9KTK0
B	1	MSE	-	expression tag	UNP Q9KTK0
B	2	ASN	-	expression tag	UNP Q9KTK0
B	3	ARG	-	expression tag	UNP Q9KTK0
B	4	LEU	-	expression tag	UNP Q9KTK0
B	5	LYS	-	expression tag	UNP Q9KTK0
B	6	ASN	-	expression tag	UNP Q9KTK0
B	262	LEU	ARG	engineered mutation	UNP Q9KTK0
C	-2	SER	-	expression tag	UNP Q9KTK0

Continued on next page...

Continued from previous page...

Chain	Residue	Modelled	Actual	Comment	Reference
C	-1	ASN	-	expression tag	UNP Q9KTK0
C	0	ALA	-	expression tag	UNP Q9KTK0
C	1	MSE	-	expression tag	UNP Q9KTK0
C	2	ASN	-	expression tag	UNP Q9KTK0
C	3	ARG	-	expression tag	UNP Q9KTK0
C	4	LEU	-	expression tag	UNP Q9KTK0
C	5	LYS	-	expression tag	UNP Q9KTK0
C	6	ASN	-	expression tag	UNP Q9KTK0
C	262	LEU	ARG	engineered mutation	UNP Q9KTK0
D	-2	SER	-	expression tag	UNP Q9KTK0
D	-1	ASN	-	expression tag	UNP Q9KTK0
D	0	ALA	-	expression tag	UNP Q9KTK0
D	1	MSE	-	expression tag	UNP Q9KTK0
D	2	ASN	-	expression tag	UNP Q9KTK0
D	3	ARG	-	expression tag	UNP Q9KTK0
D	4	LEU	-	expression tag	UNP Q9KTK0
D	5	LYS	-	expression tag	UNP Q9KTK0
D	6	ASN	-	expression tag	UNP Q9KTK0
D	262	LEU	ARG	engineered mutation	UNP Q9KTK0

- Molecule 2 is 7-DEAZA-7-AMINOMETHYL-GUANINE (CCD ID: PRF) (formula: C₇H₉N₅O).



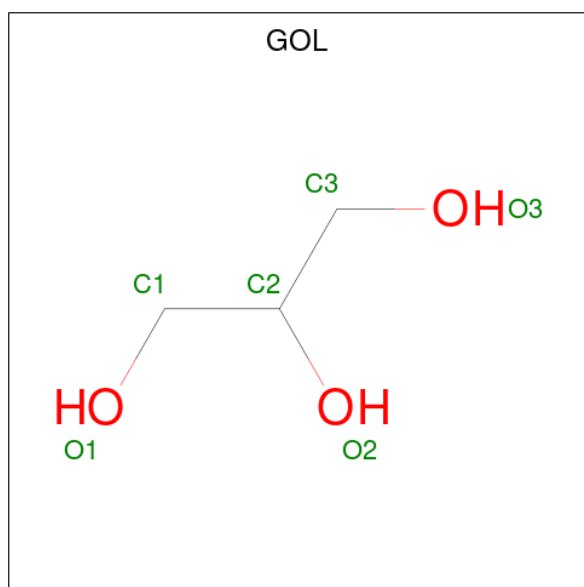
Mol	Chain	Residues	Atoms			ZeroOcc	AltConf	
			Total	C	N			O
2	A	1	13	7	5	1	0	0

Continued on next page...

Continued from previous page...

Mol	Chain	Residues	Atoms				ZeroOcc	AltConf
2	B	1	Total	C	N	O	0	1
			26	14	10	2		
2	C	1	Total	C	N	O	0	1
			26	14	10	2		
2	D	1	Total	C	N	O	0	1
			26	14	10	2		

- Molecule 3 is GLYCEROL (CCD ID: GOL) (formula: C₃H₈O₃).



Mol	Chain	Residues	Atoms			ZeroOcc	AltConf
3	A	1	Total	C	O	0	0
			6	3	3		
3	B	1	Total	C	O	0	0
			6	3	3		
3	C	1	Total	C	O	0	0
			6	3	3		
3	D	1	Total	C	O	0	0
			6	3	3		

- Molecule 4 is water.

Mol	Chain	Residues	Atoms		ZeroOcc	AltConf
4	A	296	Total	O	0	0
			296	296		
4	B	297	Total	O	0	0
			297	297		

Continued on next page...

Continued from previous page...

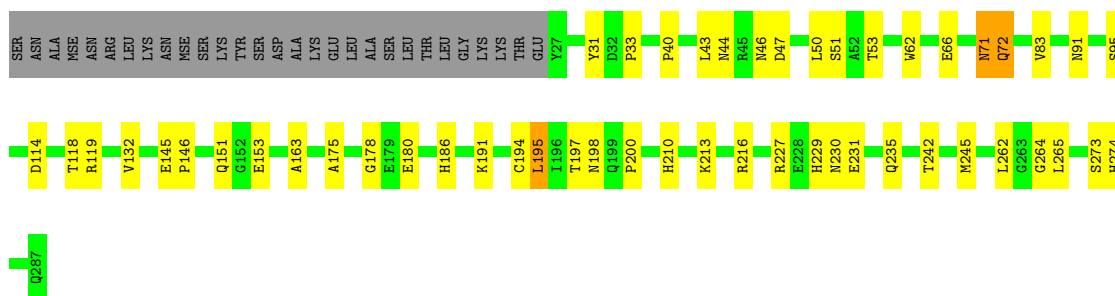
Mol	Chain	Residues	Atoms		ZeroOcc	AltConf
4	C	319	Total 319	O 319	0	0
4	D	280	Total 280	O 280	0	0

3 Residue-property plots

These plots are drawn for all protein, RNA, DNA and oligosaccharide chains in the entry. The first graphic for a chain summarises the proportions of the various outlier classes displayed in the second graphic. The second graphic shows the sequence view annotated by issues in geometry and electron density. Residues are color-coded according to the number of geometric quality criteria for which they contain at least one outlier: green = 0, yellow = 1, orange = 2 and red = 3 or more. A red dot above a residue indicates a poor fit to the electron density ($RSRZ > 2$). Stretches of 2 or more consecutive residues without any outlier are shown as a green connector. Residues present in the sample, but not in the model, are shown in grey.

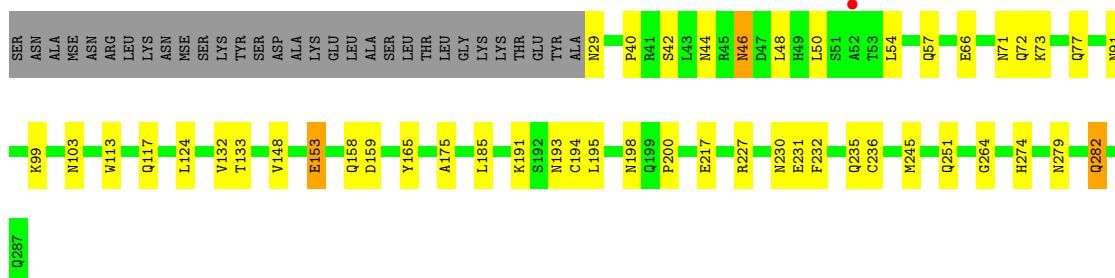
- Molecule 1: NADPH-dependent 7-cyano-7-deazaguanine reductase

Chain A: 



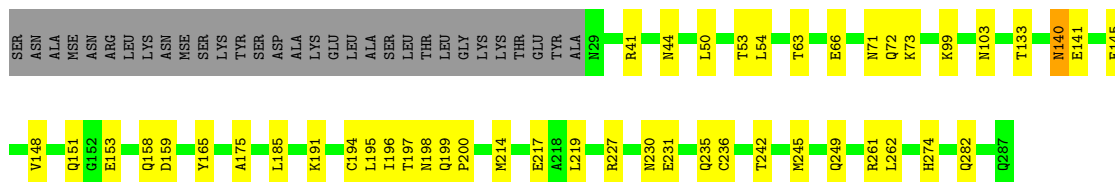
- Molecule 1: NADPH-dependent 7-cyano-7-deazaguanine reductase

Chain B: 



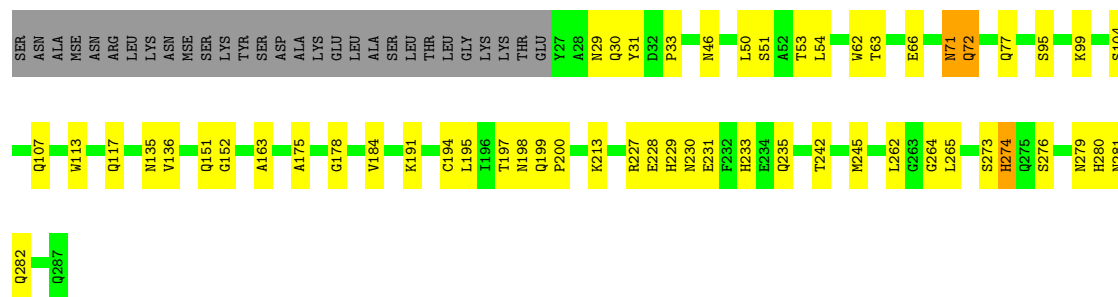
- Molecule 1: NADPH-dependent 7-cyano-7-deazaguanine reductase

Chain C: 



- Molecule 1: NADPH-dependent 7-cyano-7-deazaguanine reductase

Chain D:  71% 18% 10%



4 Data and refinement statistics i

Property	Value	Source
Space group	P 1	Depositor
Cell constants a, b, c, α , β , γ	71.33Å 71.33Å 71.33Å 109.98° 119.51° 99.50°	Depositor
Resolution (Å)	30.98 – 1.50 30.98 – 1.50	Depositor EDS
% Data completeness (in resolution range)	92.3 (30.98-1.50) 92.3 (30.98-1.50)	Depositor EDS
R_{merge}	(Not available)	Depositor
R_{sym}	0.03	Depositor
$\langle I/\sigma(I) \rangle$ ¹	6.68 (at 1.50Å)	Xtrriage
Refinement program	PHENIX (phenix.refine: dev_725)	Depositor
R, R_{free}	0.152 , 0.176 0.147 , 0.172	Depositor DCC
R_{free} test set	7763 reflections (5.01%)	wwPDB-VP
Wilson B-factor (Å ²)	13.3	Xtrriage
Anisotropy	0.360	Xtrriage
Bulk solvent k_{sol} (e/Å ³), B_{sol} (Å ²)	0.36 , 42.2	EDS
L-test for twinning ²	$\langle L \rangle = 0.50$, $\langle L^2 \rangle = 0.33$	Xtrriage
Estimated twinning fraction	0.477 for l,-h-k-l,h 0.013 for -h-k-l,l,k 0.012 for k,h,-h-k-l	Xtrriage
F_o, F_c correlation	0.98	EDS
Total number of atoms	10928	wwPDB-VP
Average B, all atoms (Å ²)	18.0	wwPDB-VP

Xtrriage's analysis on translational NCS is as follows: *The largest off-origin peak in the Patterson function is 6.20% of the height of the origin peak. No significant pseudotranslation is detected.*

¹Intensities estimated from amplitudes.

²Theoretical values of $\langle |L| \rangle$, $\langle L^2 \rangle$ for acentric reflections are 0.5, 0.333 respectively for untwinned datasets, and 0.375, 0.2 for perfectly twinned datasets.

5 Model quality [i](#)

5.1 Standard geometry [i](#)

Bond lengths and bond angles in the following residue types are not validated in this section: GOL, PRF

The Z score for a bond length (or angle) is the number of standard deviations the observed value is removed from the expected value. A bond length (or angle) with $|Z| > 5$ is considered an outlier worth inspection. RMSZ is the root-mean-square of all Z scores of the bond lengths (or angles).

Mol	Chain	Bond lengths		Bond angles	
		RMSZ	# Z >5	RMSZ	# Z >5
1	A	0.45	1/2418 (0.0%)	0.81	5/3283 (0.2%)
1	B	0.45	0/2447	0.84	9/3320 (0.3%)
1	C	0.45	0/2435	0.82	11/3304 (0.3%)
1	D	0.44	1/2502 (0.0%)	0.78	8/3397 (0.2%)
All	All	0.45	2/9802 (0.0%)	0.81	33/13304 (0.2%)

Chiral center outliers are detected by calculating the chiral volume of a chiral center and verifying if the center is modelled as a planar moiety or with the opposite hand. A planarity outlier is detected by checking planarity of atoms in a peptide group, atoms in a mainchain group or atoms of a sidechain that are expected to be planar.

Mol	Chain	#Chirality outliers	#Planarity outliers
1	A	0	2
1	B	0	2
1	C	0	2
1	D	0	2
All	All	0	8

All (2) bond length outliers are listed below:

Mol	Chain	Res	Type	Atoms	Z	Observed(Å)	Ideal(Å)
1	D	71	ASN	C-O	-5.50	1.16	1.23
1	A	71	ASN	C-O	-5.33	1.16	1.23

The worst 5 of 33 bond angle outliers are listed below:

Mol	Chain	Res	Type	Atoms	Z	Observed(°)	Ideal(°)
1	B	54	LEU	CA-C-N	8.21	128.41	119.87
1	B	54	LEU	C-N-CA	8.21	128.41	119.87
1	C	54	LEU	CA-C-N	7.98	128.16	119.87

Continued on next page...

Continued from previous page...

Mol	Chain	Res	Type	Atoms	Z	Observed(°)	Ideal(°)
1	C	54	LEU	C-N-CA	7.98	128.16	119.87
1	C	274	HIS	N-CA-C	7.37	122.44	113.38

There are no chirality outliers.

5 of 8 planarity outliers are listed below:

Mol	Chain	Res	Type	Group
1	A	71	ASN	Mainchain
1	B	71	ASN	Mainchain
1	C	71	ASN	Mainchain
1	D	71	ASN	Mainchain

5.2 Too-close contacts [i](#)

In the following table, the Non-H and H(model) columns list the number of non-hydrogen atoms and hydrogen atoms in the chain respectively. The H(added) column lists the number of hydrogen atoms added and optimized by MolProbity. The Clashes column lists the number of clashes within the asymmetric unit, whereas Symm-Clashes lists symmetry-related clashes.

Mol	Chain	Non-H	H(model)	H(added)	Clashes	Symm-Clashes
1	A	2372	0	2232	50	0
1	B	2402	0	2250	42	0
1	C	2391	0	2239	55	0
1	D	2456	0	2309	65	0
2	A	13	0	7	0	0
2	B	26	0	15	0	0
2	C	26	0	15	1	0
2	D	26	0	14	0	0
3	A	6	0	8	0	0
3	B	6	0	8	0	0
3	C	6	0	8	1	0
3	D	6	0	8	3	0
4	A	296	0	0	9	0
4	B	297	0	0	6	0
4	C	319	0	0	8	0
4	D	280	0	0	7	0
All	All	10928	0	9113	200	0

The all-atom clashscore is defined as the number of clashes found per 1000 atoms (including hydrogen atoms). The all-atom clashscore for this structure is 10.

The worst 5 of 200 close contacts within the same asymmetric unit are listed below, sorted by

their clash magnitude.

Atom-1	Atom-2	Interatomic distance (Å)	Clash overlap (Å)
1:B:195[B]:LEU:H	1:B:195[B]:LEU:HD23	1.02	1.14
1:A:195:LEU:H	1:A:195:LEU:CD2	1.64	1.07
1:A:195:LEU:H	1:A:195:LEU:HD23	0.90	1.03
1:A:195:LEU:HD23	1:A:195:LEU:N	1.74	1.01
1:B:195[B]:LEU:H	1:B:195[B]:LEU:CD2	1.79	0.96

There are no symmetry-related clashes.

5.3 Torsion angles [i](#)

5.3.1 Protein backbone [i](#)

In the following table, the Percentiles column shows the percent Ramachandran outliers of the chain as a percentile score with respect to all X-ray entries followed by that with respect to entries of similar resolution.

The Analysed column shows the number of residues for which the backbone conformation was analysed, and the total number of residues.

Mol	Chain	Analysed	Favoured	Allowed	Outliers	Percentiles	
1	A	293/290 (101%)	289 (99%)	4 (1%)	0	100	100
1	B	296/290 (102%)	292 (99%)	4 (1%)	0	100	100
1	C	296/290 (102%)	292 (99%)	4 (1%)	0	100	100
1	D	303/290 (104%)	298 (98%)	5 (2%)	0	100	100
All	All	1188/1160 (102%)	1171 (99%)	17 (1%)	0	100	100

There are no Ramachandran outliers to report.

5.3.2 Protein sidechains [i](#)

In the following table, the Percentiles column shows the percent sidechain outliers of the chain as a percentile score with respect to all X-ray entries followed by that with respect to entries of similar resolution.

The Analysed column shows the number of residues for which the sidechain conformation was analysed, and the total number of residues.

Mol	Chain	Analysed	Rotameric	Outliers	Percentiles	
1	A	264/250 (106%)	261 (99%)	3 (1%)	65	41
1	B	268/250 (107%)	258 (96%)	10 (4%)	30	6
1	C	268/250 (107%)	266 (99%)	2 (1%)	76	57
1	D	274/250 (110%)	270 (98%)	4 (2%)	57	31
All	All	1074/1000 (107%)	1055 (98%)	19 (2%)	59	24

5 of 19 residues with a non-rotameric sidechain are listed below:

Mol	Chain	Res	Type
1	C	140[B]	ASN
1	D	274[A]	HIS
1	D	274[B]	HIS
1	D	228	GLU
1	B	57	GLN

Sometimes sidechains can be flipped to improve hydrogen bonding and reduce clashes. 5 of 31 such sidechains are listed below:

Mol	Chain	Res	Type
1	B	173	GLN
1	D	107	GLN
1	B	275	GLN
1	D	233	HIS
1	D	29	ASN

5.3.3 RNA [i](#)

There are no RNA molecules in this entry.

5.4 Non-standard residues in protein, DNA, RNA chains [i](#)

There are no non-standard protein/DNA/RNA residues in this entry.

5.5 Carbohydrates [i](#)

There are no oligosaccharides in this entry.

5.6 Ligand geometry [i](#)

11 ligands are modelled in this entry.

In the following table, the Counts columns list the number of bonds (or angles) for which Mogul statistics could be retrieved, the number of bonds (or angles) that are observed in the model and the number of bonds (or angles) that are defined in the Chemical Component Dictionary. The Link column lists molecule types, if any, to which the group is linked. The Z score for a bond length (or angle) is the number of standard deviations the observed value is removed from the expected value. A bond length (or angle) with $|Z| > 2$ is considered an outlier worth inspection. RMSZ is the root-mean-square of all Z scores of the bond lengths (or angles).

Mol	Type	Chain	Res	Link	Bond lengths			Bond angles		
					Counts	RMSZ	# Z > 2	Counts	RMSZ	# Z > 2
3	GOL	C	291	-	5,5,5	0.36	0	5,5,5	0.38	0
2	PRF	A	290	1	14,14,14	2.56	6 (42%)	14,20,20	2.79	5 (35%)
2	PRF	C	290[B]	1	14,14,14	2.59	6 (42%)	14,20,20	2.42	6 (42%)
2	PRF	C	290[A]	1	14,14,14	2.55	6 (42%)	14,20,20	2.38	5 (35%)
2	PRF	B	290[B]	1	14,14,14	2.64	6 (42%)	14,20,20	2.52	6 (42%)
3	GOL	A	291	-	5,5,5	0.42	0	5,5,5	0.24	0
2	PRF	B	290[A]	1	14,14,14	2.55	6 (42%)	14,20,20	2.51	6 (42%)
3	GOL	D	291	-	5,5,5	0.40	0	5,5,5	0.15	0
2	PRF	D	290[B]	1	14,14,14	2.68	6 (42%)	14,20,20	2.55	6 (42%)
3	GOL	B	291	-	5,5,5	0.40	0	5,5,5	0.15	0
2	PRF	D	290[A]	1	14,14,14	2.61	6 (42%)	14,20,20	2.61	5 (35%)

In the following table, the Chirals column lists the number of chiral outliers, the number of chiral centers analysed, the number of these observed in the model and the number defined in the Chemical Component Dictionary. Similar counts are reported in the Torsion and Rings columns. '-' means no outliers of that kind were identified.

Mol	Type	Chain	Res	Link	Chirals	Torsions	Rings
3	GOL	C	291	-	-	2/4/4/4	-
2	PRF	A	290	1	-	0/0/2/2	0/2/2/2
2	PRF	C	290[B]	1	-	0/0/2/2	0/2/2/2
2	PRF	C	290[A]	1	-	0/0/2/2	0/2/2/2
2	PRF	B	290[B]	1	-	0/0/2/2	0/2/2/2
3	GOL	A	291	-	-	2/4/4/4	-
2	PRF	B	290[A]	1	-	0/0/2/2	0/2/2/2
3	GOL	D	291	-	-	2/4/4/4	-
2	PRF	D	290[B]	1	-	0/0/2/2	0/2/2/2
3	GOL	B	291	-	-	4/4/4/4	-
2	PRF	D	290[A]	1	-	0/0/2/2	0/2/2/2

The worst 5 of 42 bond length outliers are listed below:

Mol	Chain	Res	Type	Atoms	Z	Observed(Å)	Ideal(Å)
2	D	290[B]	PRF	C2-N2	5.13	1.46	1.34
2	C	290[A]	PRF	C2-N2	5.09	1.46	1.34
2	C	290[B]	PRF	C2-N2	5.07	1.46	1.34
2	B	290[B]	PRF	C2-N2	5.03	1.46	1.34
2	D	290[A]	PRF	C2-N2	4.96	1.45	1.34

The worst 5 of 39 bond angle outliers are listed below:

Mol	Chain	Res	Type	Atoms	Z	Observed(°)	Ideal(°)
2	A	290	PRF	C7-C5-C4	-7.29	104.32	112.68
2	D	290[A]	PRF	C7-C5-C4	-6.94	104.73	112.68
2	D	290[B]	PRF	C7-C5-C4	-6.61	105.11	112.68
2	B	290[A]	PRF	C7-C5-C4	-6.54	105.18	112.68
2	C	290[B]	PRF	C7-C5-C4	-6.40	105.35	112.68

There are no chirality outliers.

5 of 10 torsion outliers are listed below:

Mol	Chain	Res	Type	Atoms
3	C	291	GOL	O1-C1-C2-O2
3	C	291	GOL	O1-C1-C2-C3
3	A	291	GOL	C1-C2-C3-O3
3	D	291	GOL	C1-C2-C3-O3
3	D	291	GOL	O2-C2-C3-O3

There are no ring outliers.

3 monomers are involved in 5 short contacts:

Mol	Chain	Res	Type	Clashes	Symm-Clashes
3	C	291	GOL	1	0
2	C	290[A]	PRF	1	0
3	D	291	GOL	3	0

5.7 Other polymers [i](#)

There are no such residues in this entry.

5.8 Polymer linkage issues

There are no chain breaks in this entry.

6 Fit of model and data [i](#)

6.1 Protein, DNA and RNA chains [i](#)

In the following table, the column labelled ‘#RSRZ > 2’ contains the number (and percentage) of RSRZ outliers, followed by percent RSRZ outliers for the chain as percentile scores relative to all X-ray entries and entries of similar resolution. The OWAB column contains the minimum, median, 95th percentile and maximum values of the occupancy-weighted average B-factor per residue. The column labelled ‘Q < 0.9’ lists the number of (and percentage) of residues with an average occupancy less than 0.9.

Mol	Chain	Analysed	<RSRZ>	#RSRZ>2	OWAB(Å ²)	Q<0.9
1	A	257/290 (88%)	-1.20	0 100 100	5, 14, 33, 69	33 (12%)
1	B	255/290 (87%)	-1.26	1 (0%) 88 90	5, 11, 22, 39	38 (14%)
1	C	255/290 (87%)	-1.27	0 100 100	5, 12, 22, 42	39 (15%)
1	D	257/290 (88%)	-1.20	0 100 100	6, 14, 27, 42	43 (16%)
All	All	1024/1160 (88%)	-1.24	1 (0%) 92 92	5, 13, 26, 69	153 (14%)

All (1) RSRZ outliers are listed below:

Mol	Chain	Res	Type	RSRZ
1	B	52[A]	ALA	2.0

6.2 Non-standard residues in protein, DNA, RNA chains [i](#)

There are no non-standard protein/DNA/RNA residues in this entry.

6.3 Carbohydrates [i](#)

There are no oligosaccharides in this entry.

6.4 Ligands [i](#)

In the following table, the Atoms column lists the number of modelled atoms in the group and the number defined in the chemical component dictionary. The B-factors column lists the minimum, median, 95th percentile and maximum values of B factors of atoms in the group. The column labelled ‘Q < 0.9’ lists the number of atoms with occupancy less than 0.9.

Mol	Type	Chain	Res	Atoms	RSCC	RSR	B-factors(Å ²)	Q<0.9
3	GOL	A	291	6/6	0.96	0.06	39,42,46,51	0

Continued on next page...

Continued from previous page...

Mol	Type	Chain	Res	Atoms	RSCC	RSR	B-factors(\AA^2)	Q<0.9
3	GOL	B	291	6/6	0.97	0.07	24,37,42,46	0
3	GOL	C	291	6/6	0.97	0.06	23,28,36,39	0
2	PRF	C	290[B]	13/13	0.99	0.02	7,9,13,15	13
2	PRF	C	290[A]	13/13	0.99	0.02	6,8,14,16	13
3	GOL	D	291	6/6	0.99	0.03	17,20,33,41	0
2	PRF	D	290[B]	13/13	1.00	0.01	8,13,15,16	13
2	PRF	B	290[B]	13/13	1.00	0.01	5,8,11,11	13
2	PRF	A	290	13/13	1.00	0.02	9,12,16,17	0
2	PRF	B	290[A]	13/13	1.00	0.01	6,8,13,14	13
2	PRF	D	290[A]	13/13	1.00	0.01	8,11,15,16	13

6.5 Other polymers [i](#)

There are no such residues in this entry.