



wwPDB X-ray Structure Validation Summary Report ⓘ

Mar 4, 2026 – 10:53 PM UTC

PDB ID : 1SA4 / pdb_00001sa4
Title : human protein farnesyltransferase complexed with FPP and R115777
Authors : Reid, T.S.; Beese, L.S.
Deposited on : 2004-02-06
Resolution : 2.10 Å(reported)

This is a wwPDB X-ray Structure Validation Summary Report for a publicly released PDB entry.

We welcome your comments at validation@mail.wwpdb.org

A user guide is available at

<https://www.wwpdb.org/validation/2017/XrayValidationReportHelp>

with specific help available everywhere you see the ⓘ symbol.

The types of validation reports are described at

<http://www.wwpdb.org/validation/2017/FAQs#types>.

The following versions of software and data (see [references ⓘ](#)) were used in the production of this report:

MolProbity : 4-5-2 with Phenix2.0
Mogul : 2022.3.0, CSD as543be (2022)
Xtrriage (Phenix) : 2.0
EDS : 3.0
Buster-report : wwPDB partial adaption of 1.1.7 (2018)
Percentile statistics : 20250101.v01 (using entries in the PDB archive January 1st 2025)
CCP4 : 9.0.010 (Gargrove)
Density-Fitness : 1.0.12
Ideal geometry (proteins) : Engh & Huber (2001)
Ideal geometry (DNA, RNA) : Parkinson et al. (1996)
Validation Pipeline (wwPDB-VP) : 2.49

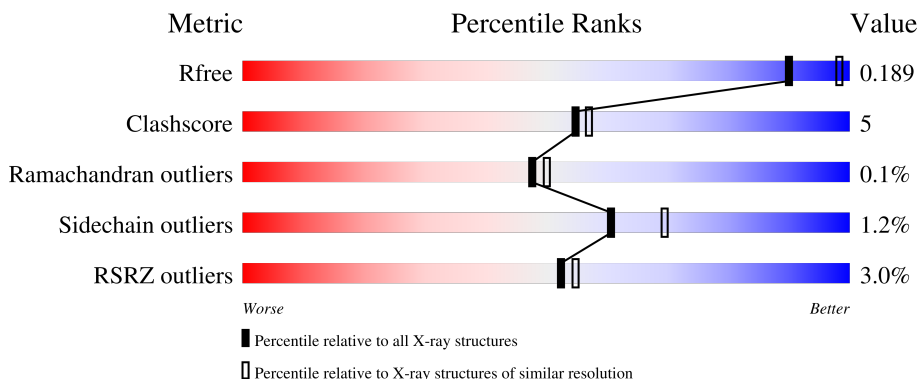
1 Overall quality at a glance

The following experimental techniques were used to determine the structure:

X-RAY DIFFRACTION

The reported resolution of this entry is 2.10 Å.

Percentile scores (ranging between 0-100) for global validation metrics of the entry are shown in the following graphic. The table shows the number of entries on which the scores are based.



Metric	Whole archive (#Entries)	Similar resolution (#Entries, resolution range(Å))
R_{free}	180053	6658 (2.10-2.10)
Clashscore	190562	7164 (2.10-2.10)
Ramachandran outliers	187476	7099 (2.10-2.10)
Sidechain outliers	187428	7100 (2.10-2.10)
RSRZ outliers	180081	6662 (2.10-2.10)

The table below summarises the geometric issues observed across the polymeric chains and their fit to the electron density. The red, orange, yellow and green segments of the lower bar indicate the fraction of residues that contain outliers for ≥ 3 , 2, 1 and 0 types of geometric quality criteria respectively. A grey segment represents the fraction of residues that are not modelled. The numeric value for each fraction is indicated below the corresponding segment, with a dot representing fractions $\leq 5\%$. The upper red bar (where present) indicates the fraction of residues that have poor fit to the electron density. The numeric value is given above the bar.

Mol	Chain	Length	Quality of chain
1	A	382	 4% 73% 9% 14% 18%
2	B	437	 2% 81% 12% 6% 6%
3	C	2	 100%

2 Entry composition [i](#)

There are 7 unique types of molecules in this entry. The entry contains 6663 atoms, of which 0 are hydrogens and 0 are deuteriums.

In the tables below, the ZeroOcc column contains the number of atoms modelled with zero occupancy, the AltConf column contains the number of residues with at least one atom in alternate conformation and the Trace column contains the number of residues modelled with at most 2 atoms.

- Molecule 1 is a protein called Protein farnesyltransferase/geranylgeranyltransferase type I alpha subunit.

Mol	Chain	Residues	Atoms					ZeroOcc	AltConf	Trace
			Total	C	N	O	S			
1	A	315	2682	1711	467	499	5	0	0	0

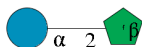
There are 3 discrepancies between the modelled and reference sequences:

Chain	Residue	Modelled	Actual	Comment	Reference
A	380	GLU	-	insertion	UNP P49354
A	381	GLU	-	insertion	UNP P49354
A	382	PHE	-	insertion	UNP P49354

- Molecule 2 is a protein called Protein farnesyltransferase beta subunit.

Mol	Chain	Residues	Atoms					ZeroOcc	AltConf	Trace
			Total	C	N	O	S			
2	B	410	3227	2065	552	588	22	0	0	0

- Molecule 3 is an oligosaccharide called beta-D-fructofuranose-(2-1)-alpha-D-glucopyranose.

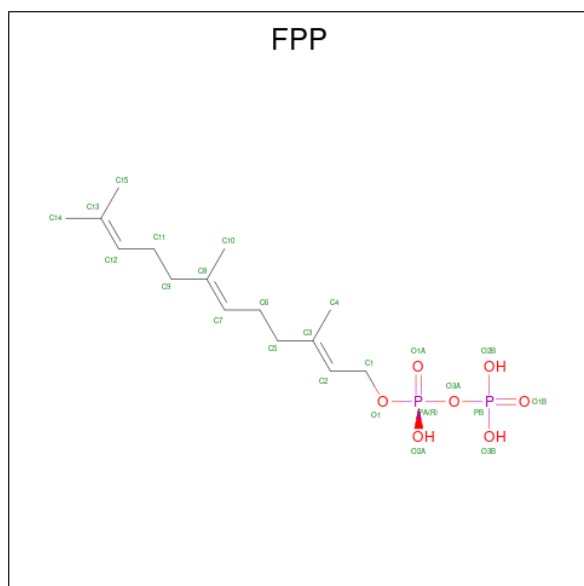


Mol	Chain	Residues	Atoms			ZeroOcc	AltConf	Trace
			Total	C	O			
3	C	2	23	12	11	0	0	0

- Molecule 4 is ZINC ION (CCD ID: ZN) (formula: Zn).

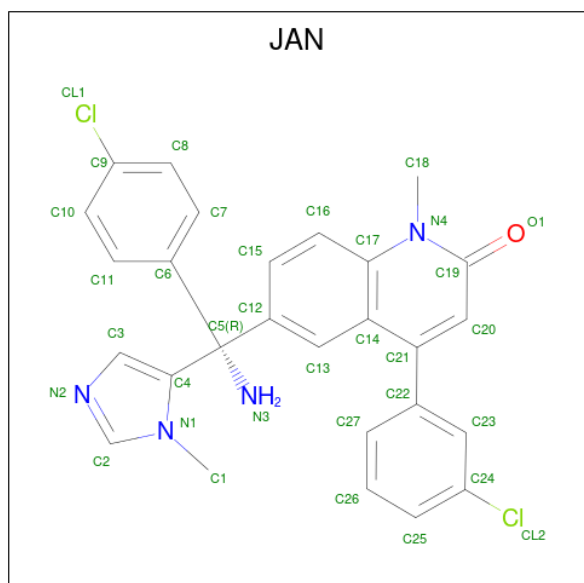
Mol	Chain	Residues	Atoms		ZeroOcc	AltConf
4	B	1	Total	Zn	0	0
			1	1		

- Molecule 5 is FARNESYL DIPHOSPHATE (CCD ID: FPP) (formula: $C_{15}H_{28}O_7P_2$).



Mol	Chain	Residues	Atoms				ZeroOcc	AltConf
5	B	1	Total	C	O	P	0	0
			24	15	7	2		

- Molecule 6 is 6-[(S)-AMINO(4-CHLOROPHENYL)(1-METHYL-1H-IMIDAZOL-5-YL)METHYL]-4-(3-CHLOROPHENYL)-1-METHYLQUINOLIN-2(1H)-ONE (CCD ID: JAN) (formula: $C_{27}H_{22}Cl_2N_4O$).



Mol	Chain	Residues	Atoms					ZeroOcc	AltConf
			Total	C	Cl	N	O		
6	B	1	34	27	2	4	1	0	0

- Molecule 7 is water.

Mol	Chain	Residues	Atoms		ZeroOcc	AltConf
7	A	302	Total 302	O 302	0	0
7	B	370	Total 370	O 370	0	0

4 Data and refinement statistics i

Property	Value	Source
Space group	P 61	Depositor
Cell constants a, b, c, α , β , γ	178.44Å 178.44Å 64.46Å 90.00° 90.00° 120.00°	Depositor
Resolution (Å)	29.88 – 2.10 29.88 – 2.10	Depositor EDS
% Data completeness (in resolution range)	96.7 (29.88-2.10) 96.6 (29.88-2.10)	Depositor EDS
R_{merge}	(Not available)	Depositor
R_{sym}	0.09	Depositor
$\langle I/\sigma(I) \rangle$ ¹	2.58 (at 2.10Å)	Xtrriage
Refinement program	CNS 1.0	Depositor
R, R_{free}	0.166 , 0.195 0.174 , 0.189	Depositor DCC
R_{free} test set	3445 reflections (5.15%)	wwPDB-VP
Wilson B-factor (Å ²)	19.2	Xtrriage
Anisotropy	0.087	Xtrriage
Bulk solvent k_{sol} (e/Å ³), B_{sol} (Å ²)	0.39 , 54.4	EDS
L-test for twinning ²	$\langle L \rangle = 0.48$, $\langle L^2 \rangle = 0.31$	Xtrriage
Estimated twinning fraction	0.036 for h,-h-k,-l	Xtrriage
F_o, F_c correlation	0.95	EDS
Total number of atoms	6663	wwPDB-VP
Average B, all atoms (Å ²)	27.0	wwPDB-VP

Xtrriage's analysis on translational NCS is as follows: *The largest off-origin peak in the Patterson function is 2.57% of the height of the origin peak. No significant pseudotranslation is detected.*

¹Intensities estimated from amplitudes.

²Theoretical values of $\langle |L| \rangle$, $\langle L^2 \rangle$ for acentric reflections are 0.5, 0.333 respectively for untwinned datasets, and 0.375, 0.2 for perfectly twinned datasets.

5 Model quality [i](#)

5.1 Standard geometry [i](#)

Bond lengths and bond angles in the following residue types are not validated in this section: ZN, FPP, FRU, JAN, GLC

The Z score for a bond length (or angle) is the number of standard deviations the observed value is removed from the expected value. A bond length (or angle) with $|Z| > 5$ is considered an outlier worth inspection. RMSZ is the root-mean-square of all Z scores of the bond lengths (or angles).

Mol	Chain	Bond lengths		Bond angles	
		RMSZ	# Z >5	RMSZ	# Z >5
1	A	0.34	0/2749	0.80	5/3734 (0.1%)
2	B	0.37	0/3316	0.86	7/4507 (0.2%)
All	All	0.36	0/6065	0.83	12/8241 (0.1%)

There are no bond length outliers.

The worst 5 of 12 bond angle outliers are listed below:

Mol	Chain	Res	Type	Atoms	Z	Observed(°)	Ideal(°)
1	A	185	GLU	N-CA-C	7.86	120.61	111.02
2	B	351	LEU	N-CA-C	7.52	119.11	108.74
2	B	375	HIS	N-CA-C	6.82	119.53	108.41
2	B	295	LEU	N-CA-C	6.51	120.15	110.52
1	A	285	GLN	N-CA-C	6.27	118.11	111.28

There are no chirality outliers.

There are no planarity outliers.

5.2 Too-close contacts [i](#)

In the following table, the Non-H and H(model) columns list the number of non-hydrogen atoms and hydrogen atoms in the chain respectively. The H(added) column lists the number of hydrogen atoms added and optimized by MolProbity. The Clashes column lists the number of clashes within the asymmetric unit, whereas Symm-Clashes lists symmetry-related clashes.

Mol	Chain	Non-H	H(model)	H(added)	Clashes	Symm-Clashes
1	A	2682	0	2601	22	0
2	B	3227	0	3147	33	0
3	C	23	0	21	0	0
4	B	1	0	0	0	0

Continued on next page...

Continued from previous page...

Mol	Chain	Non-H	H(model)	H(added)	Clashes	Symm-Clashes
5	B	24	0	25	0	0
6	B	34	0	22	2	0
7	A	302	0	0	2	0
7	B	370	0	0	0	0
All	All	6663	0	5816	57	0

The all-atom clashscore is defined as the number of clashes found per 1000 atoms (including hydrogen atoms). The all-atom clashscore for this structure is 5.

The worst 5 of 57 close contacts within the same asymmetric unit are listed below, sorted by their clash magnitude.

Atom-1	Atom-2	Interatomic distance (Å)	Clash overlap (Å)
2:B:78:HIS:HD1	2:B:349:GLY:H	1.11	0.95
2:B:74:GLN:H	2:B:344:GLN:HE22	1.19	0.91
2:B:280:ARG:HE	2:B:289:GLN:HE21	1.12	0.91
2:B:280:ARG:HE	2:B:289:GLN:NE2	1.83	0.77
2:B:134:GLN:HE22	2:B:173:ASN:H	1.38	0.72

There are no symmetry-related clashes.

5.3 Torsion angles [i](#)

5.3.1 Protein backbone [i](#)

In the following table, the Percentiles column shows the percent Ramachandran outliers of the chain as a percentile score with respect to all X-ray entries followed by that with respect to entries of similar resolution.

The Analysed column shows the number of residues for which the backbone conformation was analysed, and the total number of residues.

Mol	Chain	Analysed	Favoured	Allowed	Outliers	Percentiles	
1	A	313/382 (82%)	300 (96%)	13 (4%)	0	100	100
2	B	408/437 (93%)	397 (97%)	10 (2%)	1 (0%)	43	44
All	All	721/819 (88%)	697 (97%)	23 (3%)	1 (0%)	48	50

All (1) Ramachandran outliers are listed below:

Mol	Chain	Res	Type
2	B	421	PRO

5.3.2 Protein sidechains [i](#)

In the following table, the Percentiles column shows the percent sidechain outliers of the chain as a percentile score with respect to all X-ray entries followed by that with respect to entries of similar resolution.

The Analysed column shows the number of residues for which the sidechain conformation was analysed, and the total number of residues.

Mol	Chain	Analysed	Rotameric	Outliers	Percentiles	
1	A	294/344 (86%)	289 (98%)	5 (2%)	53	62
2	B	346/370 (94%)	343 (99%)	3 (1%)	70	78
All	All	640/714 (90%)	632 (99%)	8 (1%)	61	69

5 of 8 residues with a non-rotameric sidechain are listed below:

Mol	Chain	Res	Type
2	B	351	LEU
2	B	120	GLN
1	A	357	ARG
1	A	346	LYS
2	B	87	ARG

Sometimes sidechains can be flipped to improve hydrogen bonding and reduce clashes. 5 of 16 such sidechains are listed below:

Mol	Chain	Res	Type
2	B	375	HIS
2	B	344	GLN
2	B	88	GLN
2	B	318	GLN
2	B	74	GLN

5.3.3 RNA [i](#)

There are no RNA molecules in this entry.

5.4 Non-standard residues in protein, DNA, RNA chains [i](#)

There are no non-standard protein/DNA/RNA residues in this entry.

5.5 Carbohydrates [i](#)

2 monosaccharides are modelled in this entry.

In the following table, the Counts columns list the number of bonds (or angles) for which Mogul statistics could be retrieved, the number of bonds (or angles) that are observed in the model and the number of bonds (or angles) that are defined in the Chemical Component Dictionary. The Link column lists molecule types, if any, to which the group is linked. The Z score for a bond length (or angle) is the number of standard deviations the observed value is removed from the expected value. A bond length (or angle) with $|Z| > 2$ is considered an outlier worth inspection. RMSZ is the root-mean-square of all Z scores of the bond lengths (or angles).

Mol	Type	Chain	Res	Link	Bond lengths			Bond angles		
					Counts	RMSZ	# Z > 2	Counts	RMSZ	# Z > 2
3	GLC	C	1	3	11,11,12	3.02	4 (36%)	15,15,17	1.46	3 (20%)
3	FRU	C	2	3	11,12,12	1.46	1 (9%)	10,18,18	0.71	0

In the following table, the Chirals column lists the number of chiral outliers, the number of chiral centers analysed, the number of these observed in the model and the number defined in the Chemical Component Dictionary. Similar counts are reported in the Torsion and Rings columns. '-' means no outliers of that kind were identified.

Mol	Type	Chain	Res	Link	Chirals	Torsions	Rings
3	GLC	C	1	3	-	0/2/19/22	0/1/1/1
3	FRU	C	2	3	-	0/5/24/24	0/1/1/1

All (5) bond length outliers are listed below:

Mol	Chain	Res	Type	Atoms	Z	Observed(Å)	Ideal(Å)
3	C	1	GLC	C2-C3	8.74	1.65	1.52
3	C	2	FRU	O2-C2	3.85	1.47	1.40
3	C	1	GLC	O5-C5	2.62	1.48	1.43
3	C	1	GLC	C4-C5	2.59	1.58	1.53
3	C	1	GLC	O5-C1	2.13	1.47	1.43

All (3) bond angle outliers are listed below:

Mol	Chain	Res	Type	Atoms	Z	Observed(°)	Ideal(°)
3	C	1	GLC	C1-O5-C5	3.99	117.54	112.19
3	C	1	GLC	C1-C2-C3	-2.20	106.44	109.64

Continued on next page...

Continued from previous page...

Mol	Chain	Res	Type	Atoms	Z	Observed(°)	Ideal(°)
3	C	1	GLC	O3-C3-C2	-2.18	105.61	110.05

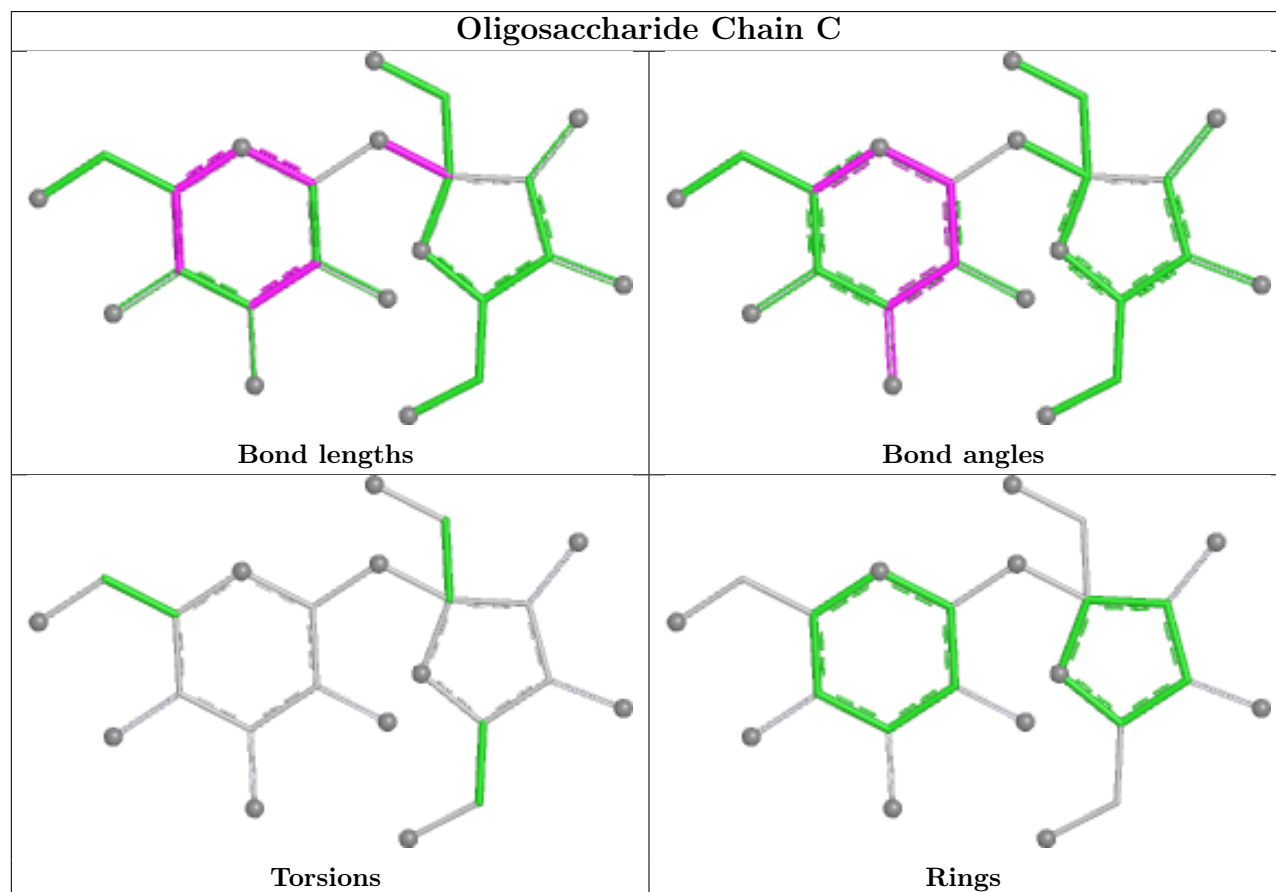
There are no chirality outliers.

There are no torsion outliers.

There are no ring outliers.

No monomer is involved in short contacts.

The following is a two-dimensional graphical depiction of Mogul quality analysis of bond lengths, bond angles, torsion angles, and ring geometry for oligosaccharide.



5.6 Ligand geometry [i](#)

Of 3 ligands modelled in this entry, 1 is monoatomic - leaving 2 for Mogul analysis.

In the following table, the Counts columns list the number of bonds (or angles) for which Mogul statistics could be retrieved, the number of bonds (or angles) that are observed in the model and the number of bonds (or angles) that are defined in the Chemical Component Dictionary. The Link column lists molecule types, if any, to which the group is linked. The Z score for a bond length (or angle) is the number of standard deviations the observed value is removed from the

expected value. A bond length (or angle) with $|Z| > 2$ is considered an outlier worth inspection. RMSZ is the root-mean-square of all Z scores of the bond lengths (or angles).

Mol	Type	Chain	Res	Link	Bond lengths			Bond angles		
					Counts	RMSZ	# Z > 2	Counts	RMSZ	# Z > 2
6	JAN	B	441	4	33,38,38	1.95	4 (12%)	47,57,57	1.95	8 (17%)
5	FPP	B	440	-	22,23,23	0.66	0	27,31,31	1.02	1 (3%)

In the following table, the Chirals column lists the number of chiral outliers, the number of chiral centers analysed, the number of these observed in the model and the number defined in the Chemical Component Dictionary. Similar counts are reported in the Torsion and Rings columns. '-' means no outliers of that kind were identified.

Mol	Type	Chain	Res	Link	Chirals	Torsions	Rings
6	JAN	B	441	4	-	0/16/22/22	0/5/5/5
5	FPP	B	440	-	-	5/25/25/25	-

All (4) bond length outliers are listed below:

Mol	Chain	Res	Type	Atoms	Z	Observed(Å)	Ideal(Å)
6	B	441	JAN	C20-C21	5.67	1.41	1.35
6	B	441	JAN	C22-C21	-4.72	1.42	1.49
6	B	441	JAN	C13-C12	2.38	1.43	1.39
6	B	441	JAN	C23-C24	2.11	1.41	1.38

The worst 5 of 9 bond angle outliers are listed below:

Mol	Chain	Res	Type	Atoms	Z	Observed(°)	Ideal(°)
6	B	441	JAN	N1-C2-N2	-9.55	107.26	112.94
6	B	441	JAN	C20-C19-N4	4.68	120.02	115.44
6	B	441	JAN	C12-C5-N3	-3.12	103.53	108.60
6	B	441	JAN	C17-N4-C19	-2.96	120.12	122.93
6	B	441	JAN	C3-N2-C2	2.89	109.03	105.24

There are no chirality outliers.

All (5) torsion outliers are listed below:

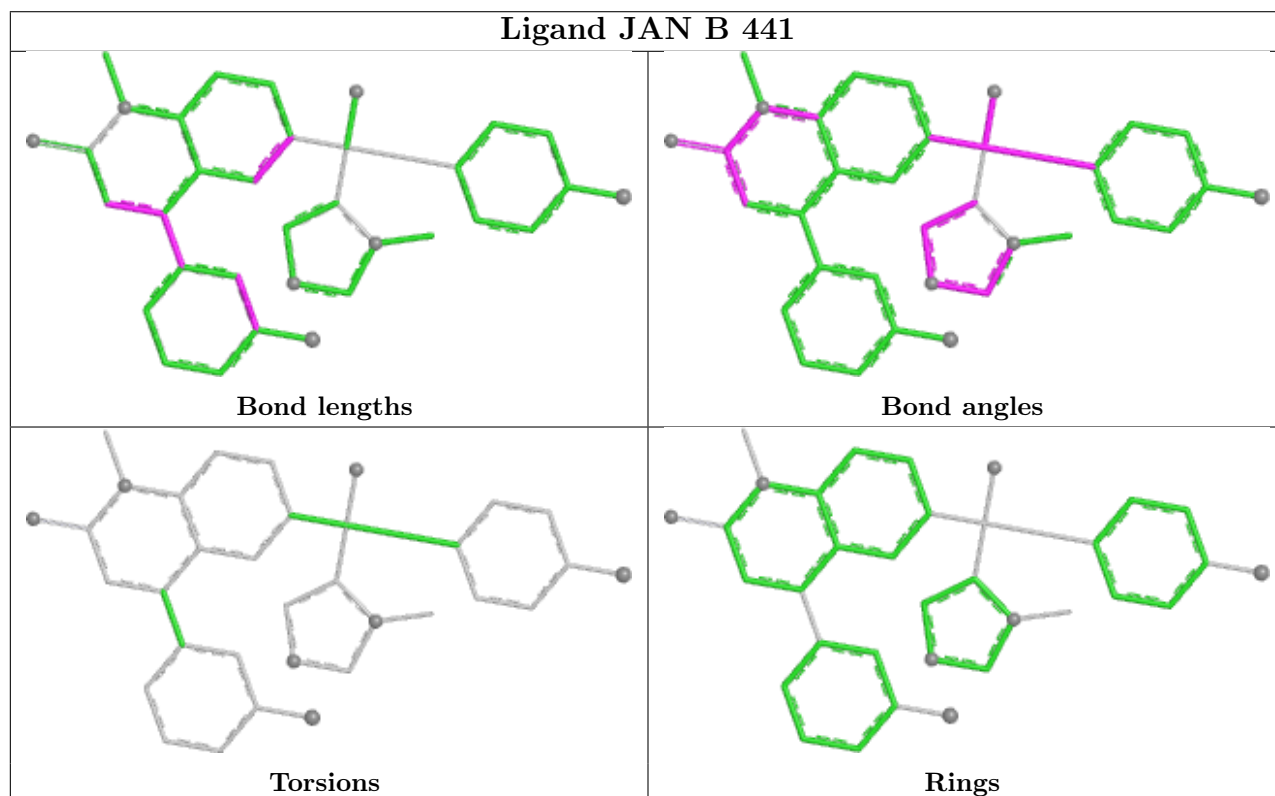
Mol	Chain	Res	Type	Atoms
5	B	440	FPP	C4-C3-C5-C6
5	B	440	FPP	C2-C3-C5-C6
5	B	440	FPP	PA-O3A-PB-O3B
5	B	440	FPP	C10-C8-C9-C11
5	B	440	FPP	C7-C8-C9-C11

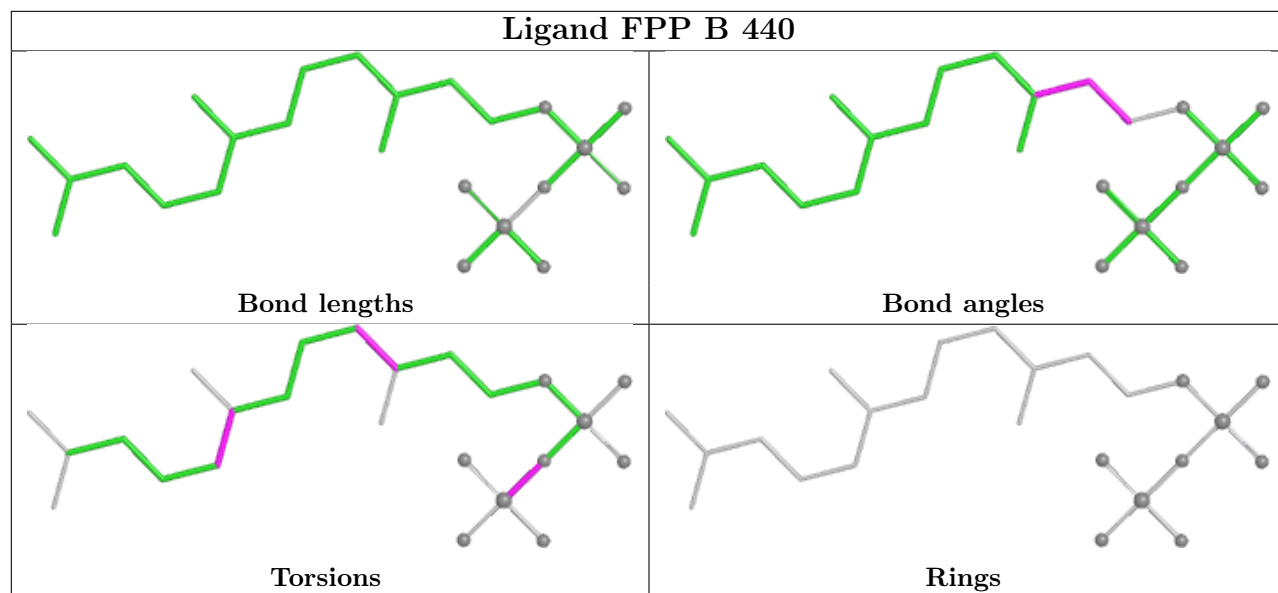
There are no ring outliers.

1 monomer is involved in 2 short contacts:

Mol	Chain	Res	Type	Clashes	Symm-Clashes
6	B	441	JAN	2	0

The following is a two-dimensional graphical depiction of Mogul quality analysis of bond lengths, bond angles, torsion angles, and ring geometry for all instances of the Ligand of Interest. In addition, ligands with molecular weight > 250 and outliers as shown on the validation Tables will also be included. For torsion angles, if less than 5% of the Mogul distribution of torsion angles is within 10 degrees of the torsion angle in question, then that torsion angle is considered an outlier. Any bond that is central to one or more torsion angles identified as an outlier by Mogul will be highlighted in the graph. For rings, the root-mean-square deviation (RMSD) between the ring in question and similar rings identified by Mogul is calculated over all ring torsion angles. If the average RMSD is greater than 60 degrees and the minimal RMSD between the ring in question and any Mogul-identified rings is also greater than 60 degrees, then that ring is considered an outlier. The outliers are highlighted in purple. The color gray indicates Mogul did not find sufficient equivalents in the CSD to analyse the geometry.





5.7 Other polymers [i](#)

There are no such residues in this entry.

5.8 Polymer linkage issues [i](#)

There are no chain breaks in this entry.

6 Fit of model and data [i](#)

6.1 Protein, DNA and RNA chains [i](#)

In the following table, the column labelled ‘#RSRZ > 2’ contains the number (and percentage) of RSRZ outliers, followed by percent RSRZ outliers for the chain as percentile scores relative to all X-ray entries and entries of similar resolution. The OWAB column contains the minimum, median, 95th percentile and maximum values of the occupancy-weighted average B-factor per residue. The column labelled ‘Q < 0.9’ lists the number of (and percentage) of residues with an average occupancy less than 0.9.

Mol	Chain	Analysed	<RSRZ>	#RSRZ>2	OWAB(Å ²)	Q<0.9
1	A	315/382 (82%)	-0.06	15 (4%) 35 38	17, 27, 46, 67	0
2	B	410/437 (93%)	-0.42	7 (1%) 69 71	14, 21, 38, 54	0
All	All	725/819 (88%)	-0.26	22 (3%) 52 55	14, 24, 41, 67	0

The worst 5 of 22 RSRZ outliers are listed below:

Mol	Chain	Res	Type	RSRZ
1	A	55	PHE	5.3
2	B	424	GLU	5.0
1	A	369	THR	3.9
1	A	302	LEU	3.6
2	B	120	GLN	3.3

6.2 Non-standard residues in protein, DNA, RNA chains [i](#)

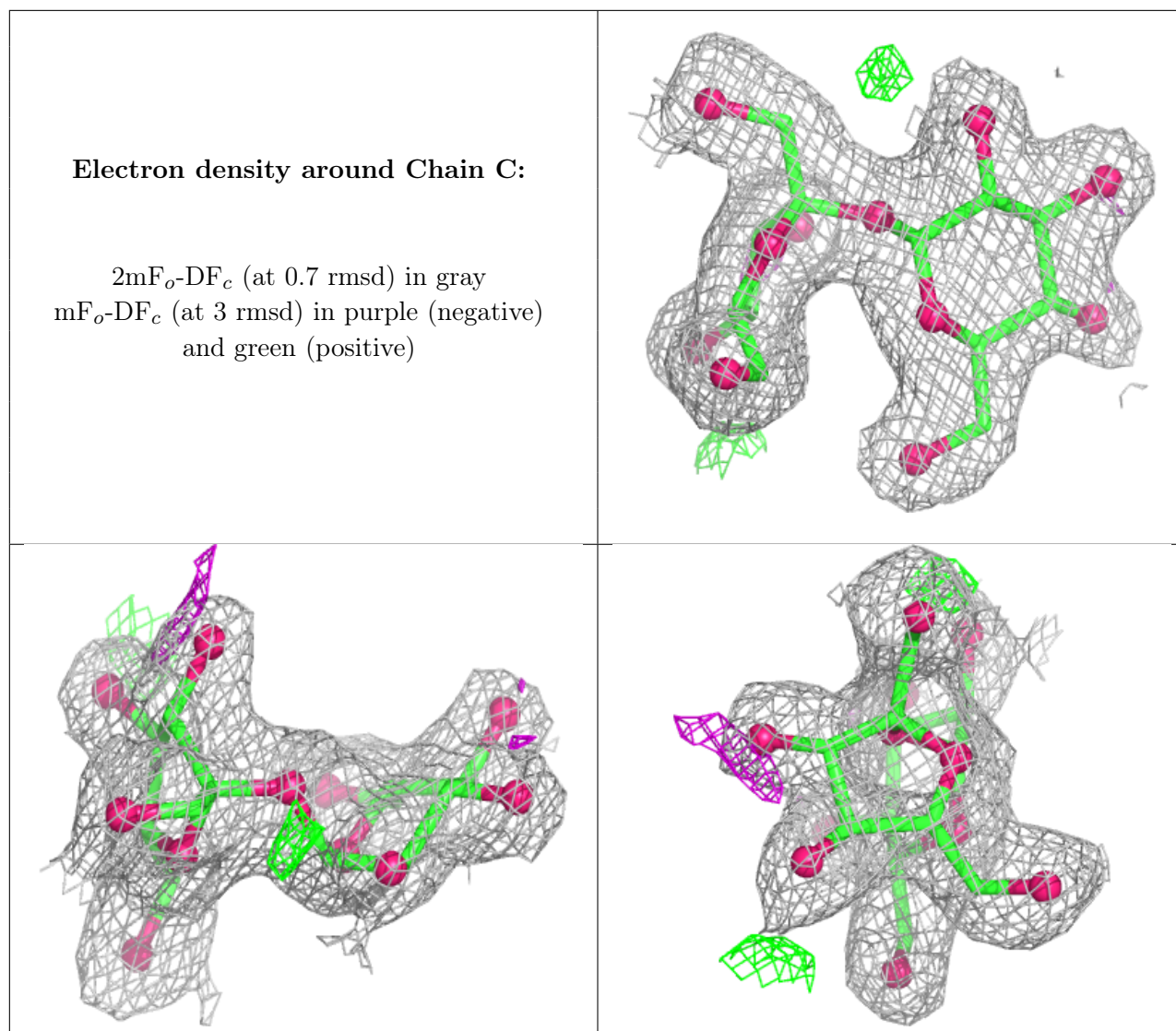
There are no non-standard protein/DNA/RNA residues in this entry.

6.3 Carbohydrates [i](#)

In the following table, the Atoms column lists the number of modelled atoms in the group and the number defined in the chemical component dictionary. The B-factors column lists the minimum, median, 95th percentile and maximum values of B factors of atoms in the group. The column labelled ‘Q < 0.9’ lists the number of atoms with occupancy less than 0.9.

Mol	Type	Chain	Res	Atoms	RSCC	RSR	B-factors(Å ²)	Q<0.9
3	GLC	C	1	11/12	0.92	0.10	32,33,35,36	0
3	FRU	C	2	12/12	0.95	0.07	25,28,31,32	0

The following is a graphical depiction of the model fit to experimental electron density for oligosaccharide. Each fit is shown from different orientation to approximate a three-dimensional view.



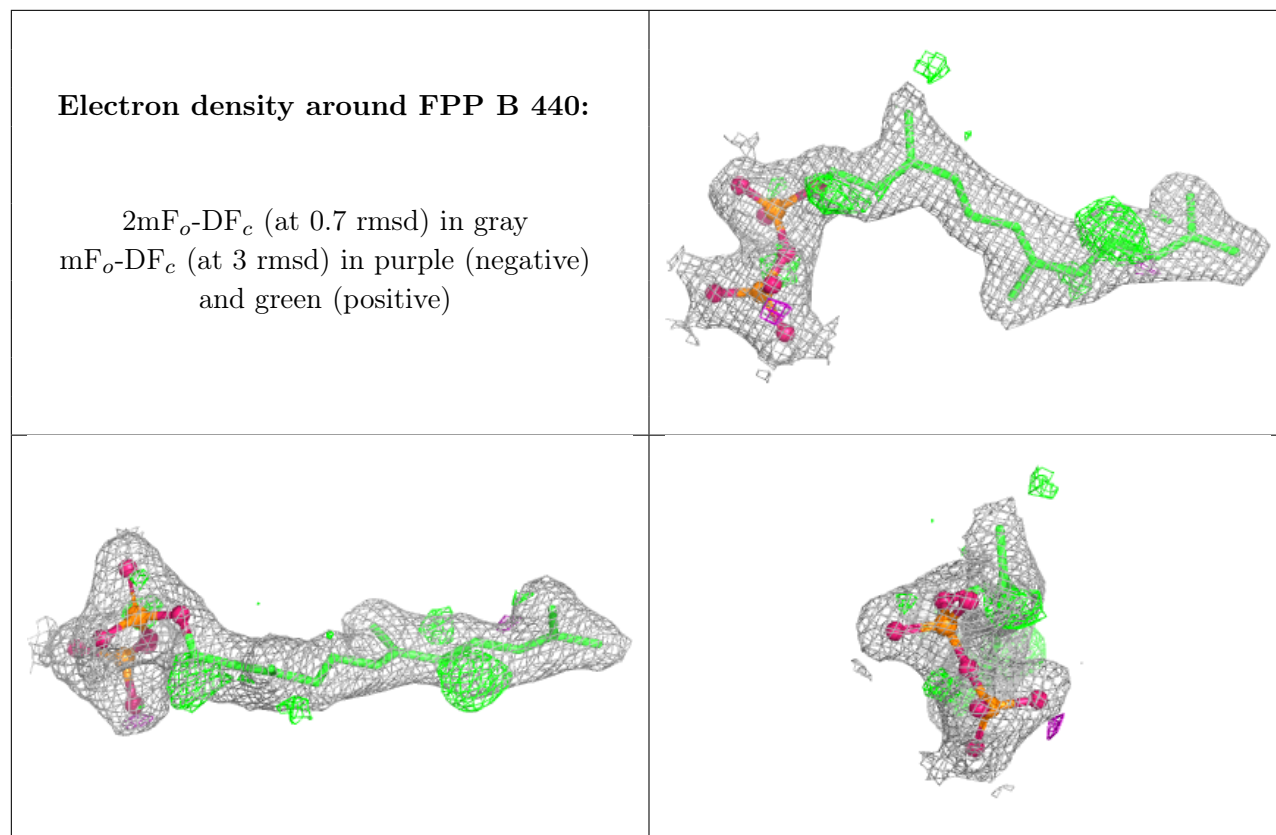
6.4 Ligands [i](#)

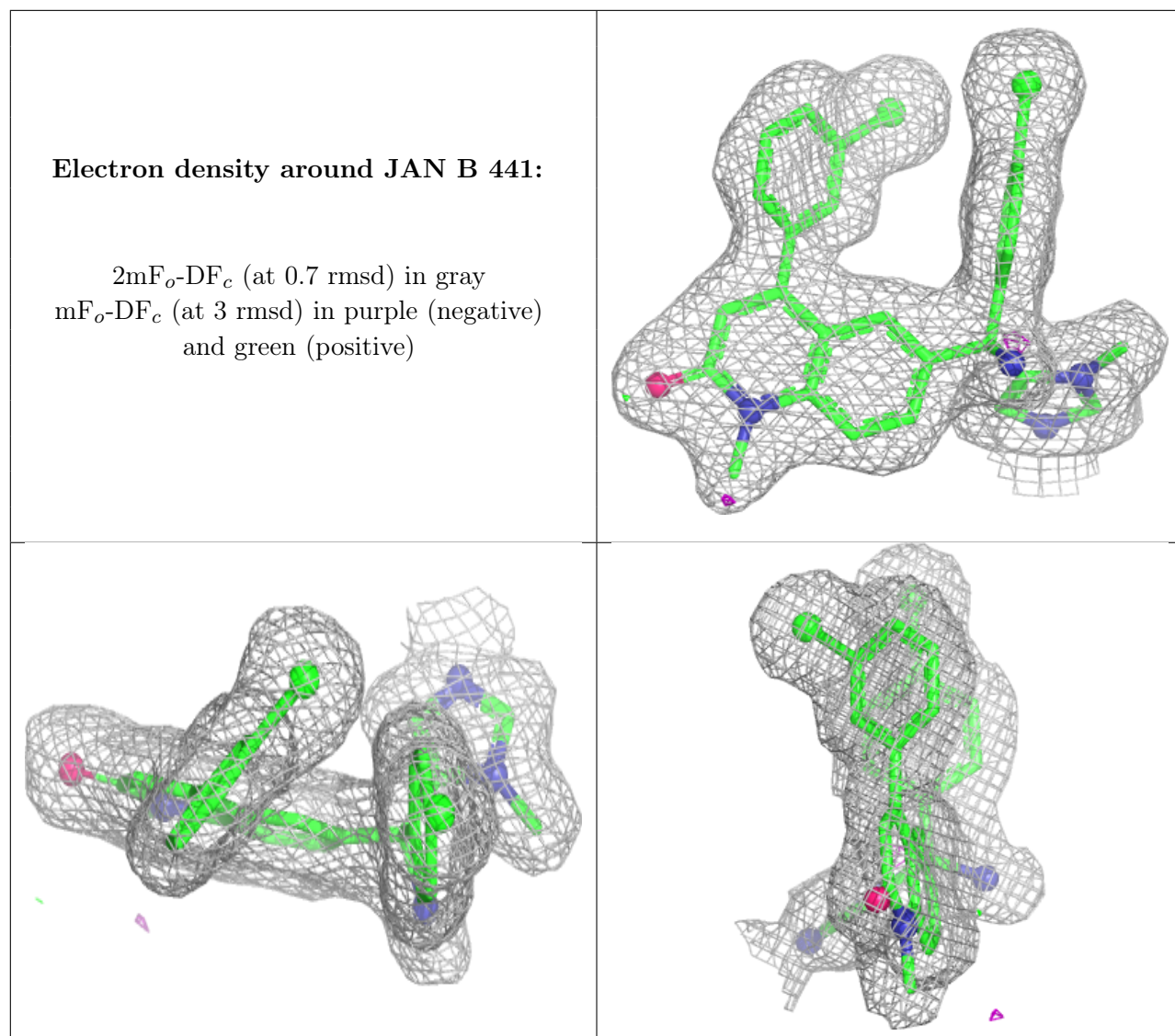
In the following table, the Atoms column lists the number of modelled atoms in the group and the number defined in the chemical component dictionary. The B-factors column lists the minimum, median, 95th percentile and maximum values of B factors of atoms in the group. The column labelled 'Q < 0.9' lists the number of atoms with occupancy less than 0.9.

Mol	Type	Chain	Res	Atoms	RSCC	RSR	B-factors(Å ²)	Q<0.9
5	FPP	B	440	24/24	0.97	0.08	19,24,25,29	0
6	JAN	B	441	34/34	0.98	0.05	16,20,22,26	0
4	ZN	B	439	1/1	1.00	0.01	18,18,18,18	0

The following is a graphical depiction of the model fit to experimental electron density of all instances of the Ligand of Interest. In addition, ligands with molecular weight > 250 and outliers as shown on the geometry validation Tables will also be included. Each fit is shown from different

orientation to approximate a three-dimensional view.





6.5 Other polymers [i](#)

There are no such residues in this entry.