



wwPDB EM Validation Summary Report ⓘ

Mar 27, 2026 – 09:59 PM UTC

PDB ID : 6SD3 / pdb_00006sd3
EMDB ID : EMD-10147
Title : 34mer structure of the Salmonella flagella MS-ring protein FliF
Authors : Johnson, S.; Fong, Y.H.; Deme, J.C.; Furlong, E.J.; Kuhlen, L.; Lea, S.M.
Deposited on : 2019-07-26
Resolution : 3.30 Å (reported)
Based on initial model : 6SCN

This is a wwPDB EM Validation Summary Report for a publicly released PDB entry.

We welcome your comments at validation@mail.wwpdb.org

A user guide is available at

<https://www.wwpdb.org/validation/2017/EMValidationReportHelp>

with specific help available everywhere you see the ⓘ symbol.

The types of validation reports are described at

<http://www.wwpdb.org/validation/2017/FAQs#types>.

The following versions of software and data (see [references ⓘ](#)) were used in the production of this report:

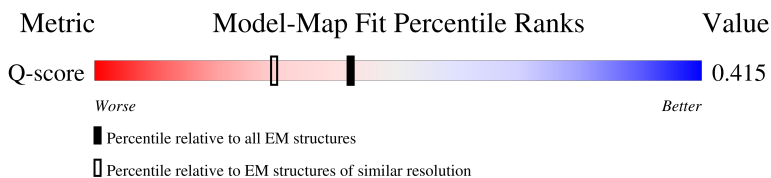
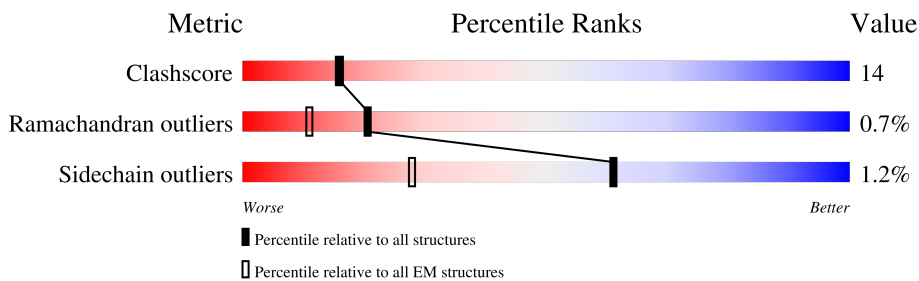
EMDB validation analysis : 0.0.1.dev132
MolProbity : 4-5-2 with Phenix2.0
Percentile statistics : 20250101.v01 (using entries in the PDB archive January 1st 2025)
EM percentile statistics : 202505.v01 (Using data in the EMDB archive up until May 2025)
MapQ : 1.9.13
Ideal geometry (proteins) : Engh & Huber (2001)
Ideal geometry (DNA, RNA) : Parkinson et al. (1996)
Validation Pipeline (wwPDB-VP) : 2.49

1 Overall quality at a glance

The following experimental techniques were used to determine the structure:
ELECTRON MICROSCOPY

The reported resolution of this entry is 3.30 Å.

Percentile scores (ranging between 0-100) for global validation metrics of the entry are shown in the following graphic. The table shows the number of entries on which the scores are based.



Metric	Whole archive (#Entries)	EM structures (#Entries)	Similar EM resolution (#Entries, resolution range(Å))
Clashscore	229148	23984	-
Ramachandran outliers	224038	23583	-
Sidechain outliers	223484	23102	-
Q-score	-	25397	15087 (2.80 - 3.80)

The table below summarises the geometric issues observed across the polymeric chains and their fit to the map. The red, orange, yellow and green segments of the bar indicate the fraction of residues that contain outliers for ≥ 3 , 2, 1 and 0 types of geometric quality criteria respectively. A grey segment represents the fraction of residues that are not modelled. The numeric value for each fraction is indicated below the corresponding segment, with a dot representing fractions $\leq 5\%$. The upper red bar (where present) indicates the fraction of residues that have poor fit to the EM map (all-atom inclusion $< 40\%$). The numeric value is given above the bar.

Mol	Chain	Length	Quality of chain
1	A	560	
1	B	560	
1	C	560	
1	D	560	




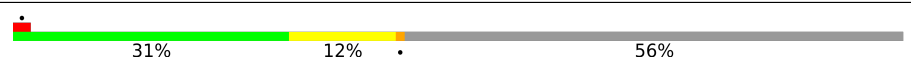
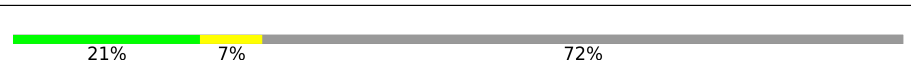
Continued on next page...

Continued from previous page...

Mol	Chain	Length	Quality of chain
1	E	560	15% 31% 13% 56%
1	F	560	32% 11% 56%
1	G	560	32% 11% 56%
1	H	560	13% 32% 11% 56%
1	I	560	32% 11% 56%
1	J	560	31% 12% 56%
1	K	560	13% 32% 11% 56%
1	L	560	30% 12% 56%
1	M	560	29% 14% 56%
1	N	560	16% 33% 11% 56%
1	O	560	31% 12% 56%
1	P	560	32% 12% 56%
1	Q	560	21% 6% 72%
1	R	560	29% 14% 56%
1	S	560	16% 31% 13% 56%
1	T	560	32% 12% 56%
1	U	560	29% 14% 56%
1	V	560	15% 30% 14% 56%
1	W	560	32% 12% 56%
1	X	560	32% 12% 56%
1	Y	560	12% 32% 12% 56%
1	Z	560	32% 11% 56%
1	a	560	31% 12% 56%
1	b	560	13% 31% 12% 56%
1	c	560	32% 12% 56%

Continued on next page...

Continued from previous page...

Mol	Chain	Length	Quality of chain
1	d	560	 <p>31% 13% 56%</p>
1	e	560	 <p>15% 33% 11% 56%</p>
1	f	560	 <p>31% 13% 56%</p>
1	g	560	 <p>31% 12% 56%</p>
1	h	560	 <p>21% 7% 72%</p>

2 Entry composition [i](#)

There is only 1 type of molecule in this entry. The entry contains 63144 atoms, of which 0 are hydrogens and 0 are deuteriums.

In the tables below, the AltConf column contains the number of residues with at least one atom in alternate conformation and the Trace column contains the number of residues modelled with at most 2 atoms.

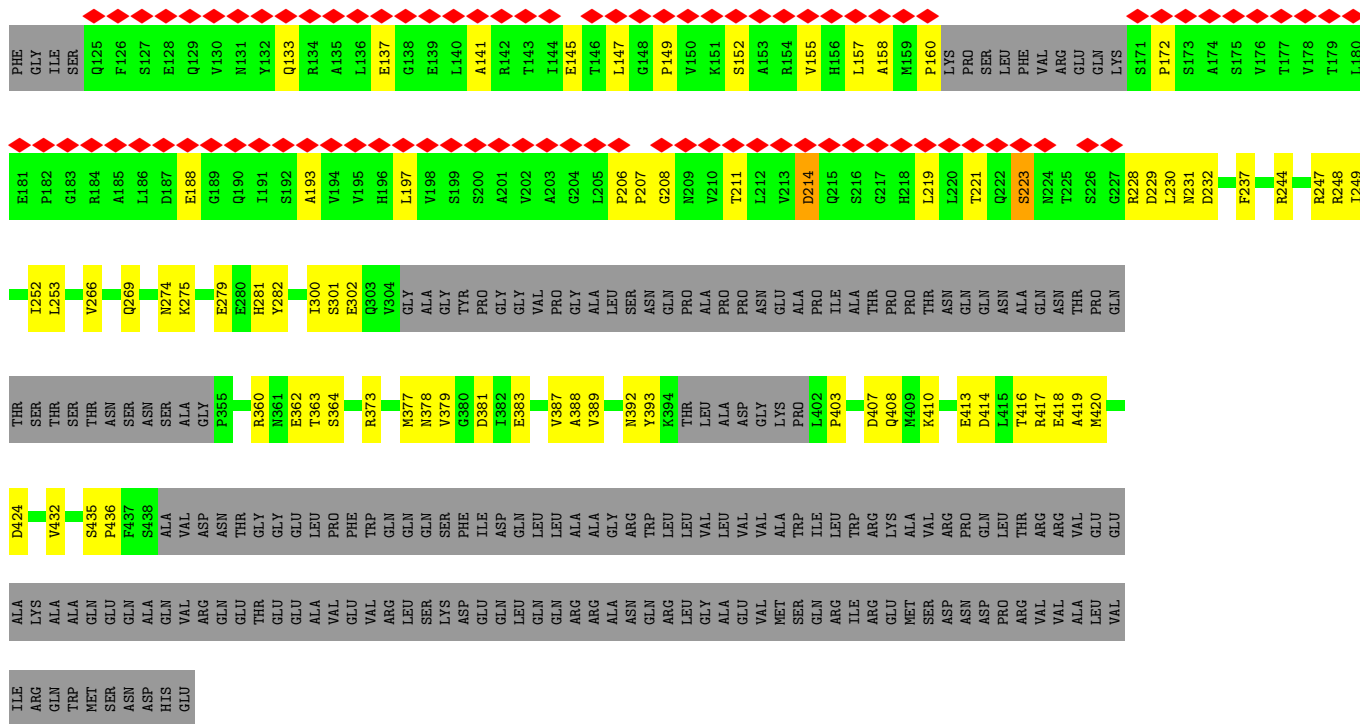
- Molecule 1 is a protein called Flagellar M-ring protein.

Mol	Chain	Residues	Atoms					AltConf	Trace
			Total	C	N	O	S		
1	A	247	1897	1160	350	383	4	0	0
1	B	247	1897	1160	350	383	4	0	0
1	C	247	1897	1160	350	383	4	0	0
1	D	247	1897	1160	350	383	4	0	0
1	E	247	1897	1160	350	383	4	0	0
1	F	247	1897	1160	350	383	4	0	0
1	G	247	1897	1160	350	383	4	0	0
1	H	247	1897	1160	350	383	4	0	0
1	I	247	1897	1160	350	383	4	0	0
1	J	247	1897	1160	350	383	4	0	0
1	K	247	1897	1160	350	383	4	0	0
1	L	247	1897	1160	350	383	4	0	0
1	M	247	1897	1160	350	383	4	0	0
1	N	247	1897	1160	350	383	4	0	0
1	O	247	1897	1160	350	383	4	0	0
1	P	247	1897	1160	350	383	4	0	0
1	Q	154	1220	742	229	246	3	0	0

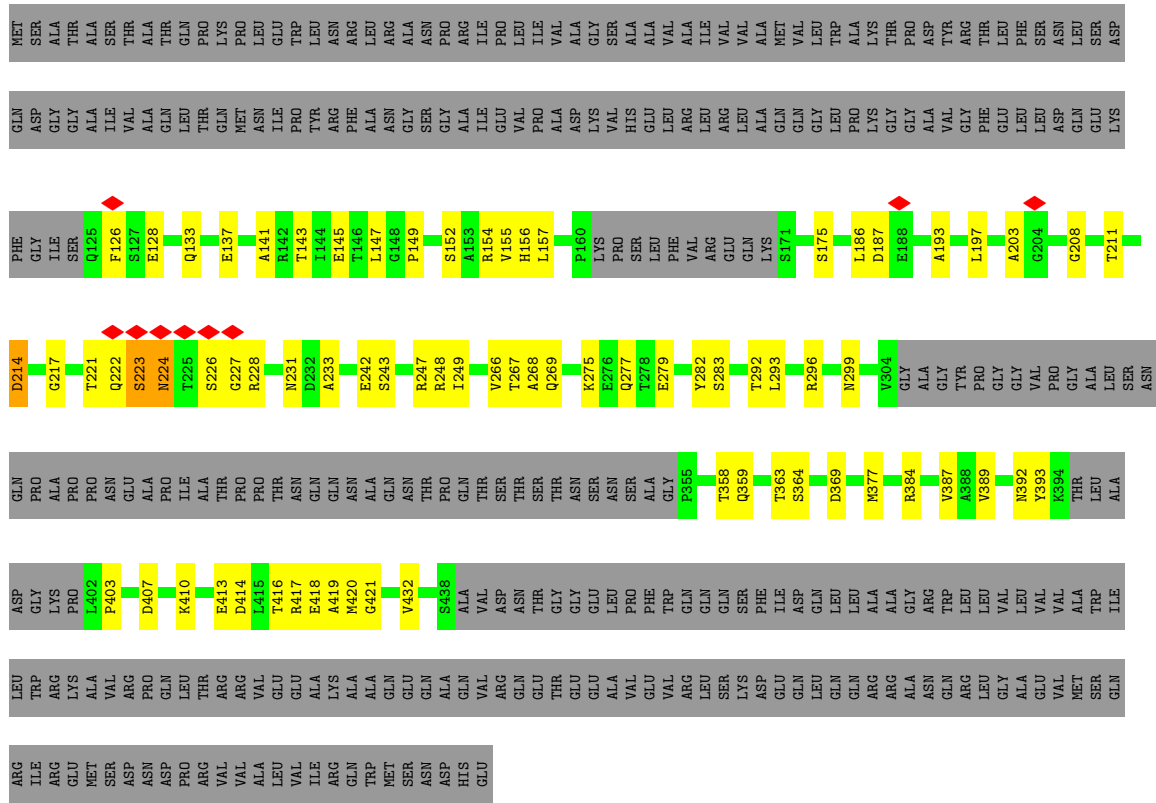
Continued on next page...

Continued from previous page...

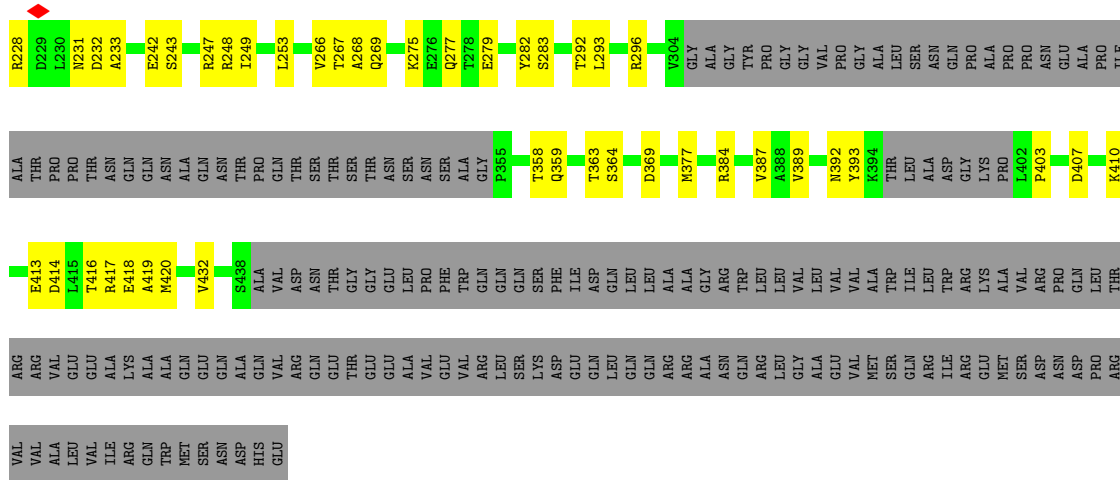
Mol	Chain	Residues	Atoms					AltConf	Trace
1	R	247	Total 1897	C 1160	N 350	O 383	S 4	0	0
1	S	247	Total 1897	C 1160	N 350	O 383	S 4	0	0
1	T	247	Total 1897	C 1160	N 350	O 383	S 4	0	0
1	U	247	Total 1897	C 1160	N 350	O 383	S 4	0	0
1	V	247	Total 1897	C 1160	N 350	O 383	S 4	0	0
1	W	247	Total 1897	C 1160	N 350	O 383	S 4	0	0
1	X	247	Total 1897	C 1160	N 350	O 383	S 4	0	0
1	Y	247	Total 1897	C 1160	N 350	O 383	S 4	0	0
1	Z	247	Total 1897	C 1160	N 350	O 383	S 4	0	0
1	a	247	Total 1897	C 1160	N 350	O 383	S 4	0	0
1	b	247	Total 1897	C 1160	N 350	O 383	S 4	0	0
1	c	247	Total 1897	C 1160	N 350	O 383	S 4	0	0
1	d	247	Total 1897	C 1160	N 350	O 383	S 4	0	0
1	e	247	Total 1897	C 1160	N 350	O 383	S 4	0	0
1	f	247	Total 1897	C 1160	N 350	O 383	S 4	0	0
1	g	247	Total 1897	C 1160	N 350	O 383	S 4	0	0
1	h	154	Total 1220	C 742	N 229	O 246	S 3	0	0



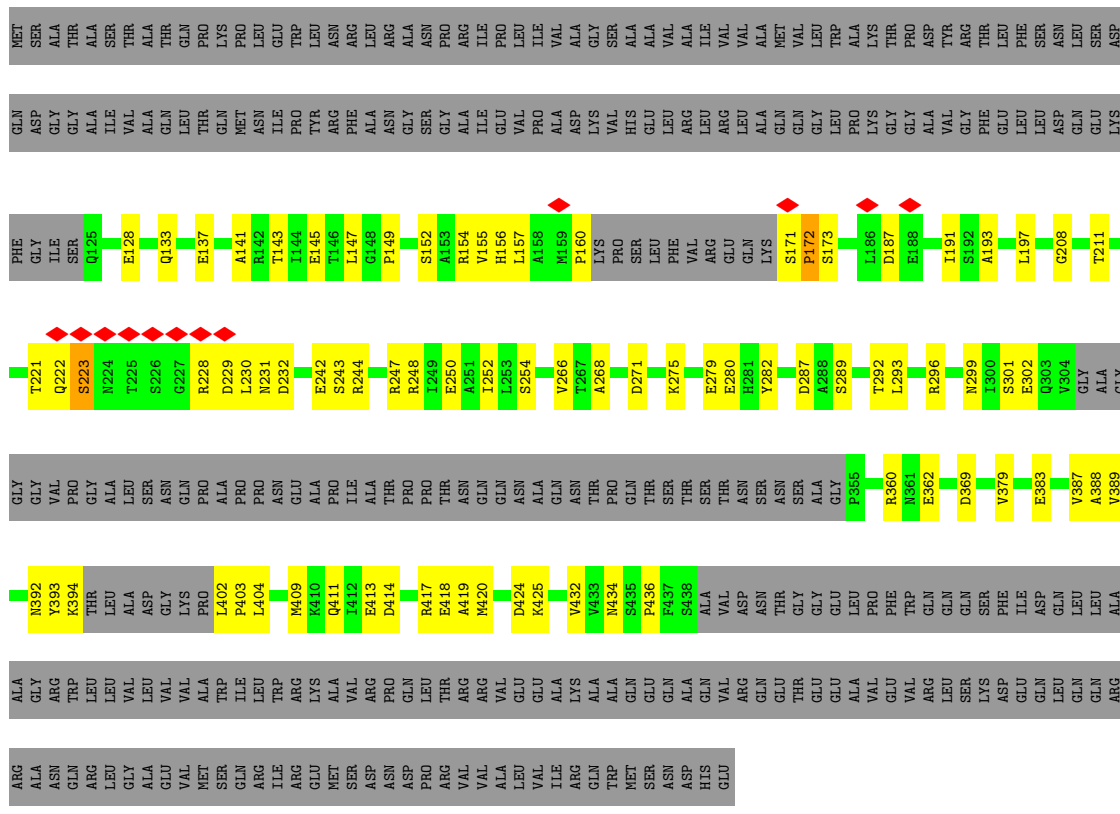
● Molecule 1: Flagellar M-ring protein



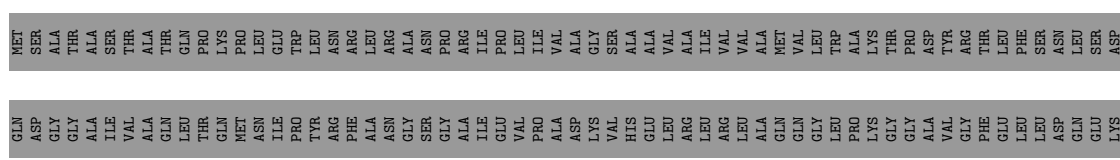
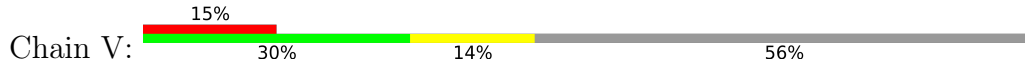
● Molecule 1: Flagellar M-ring protein

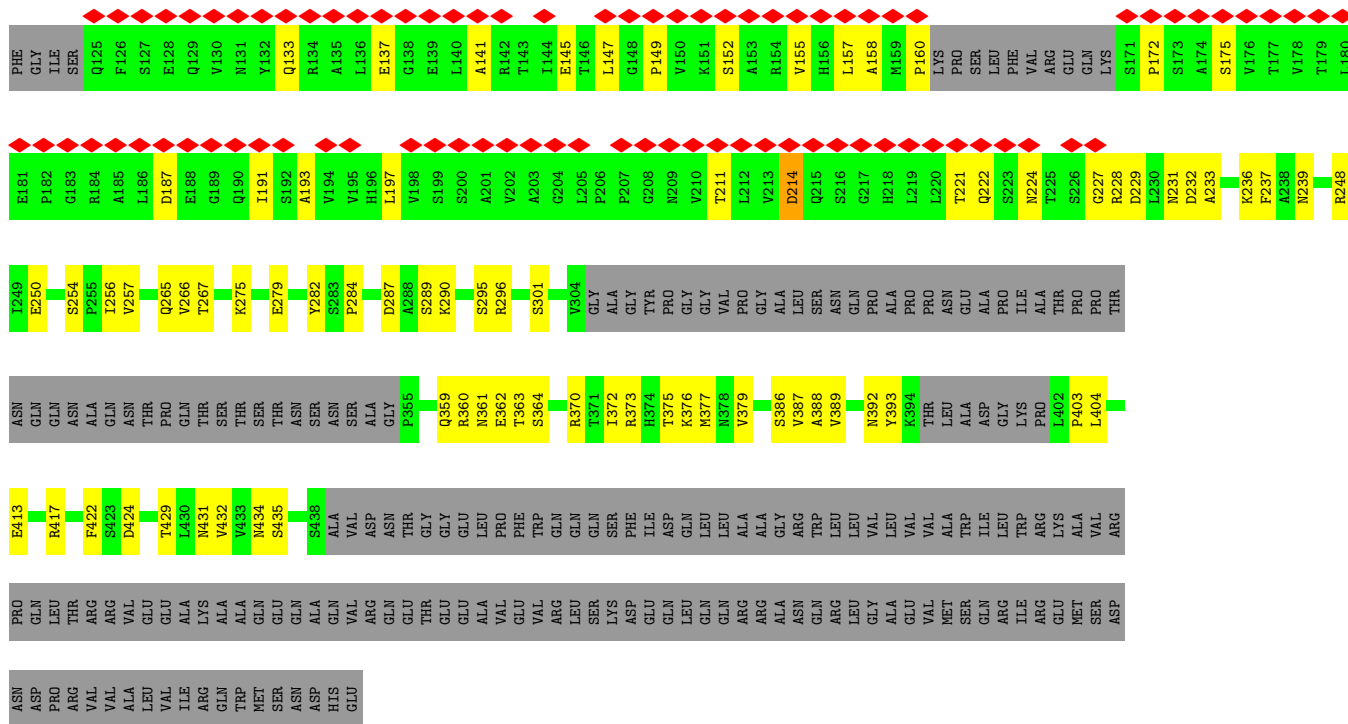


• Molecule 1: Flagellar M-ring protein

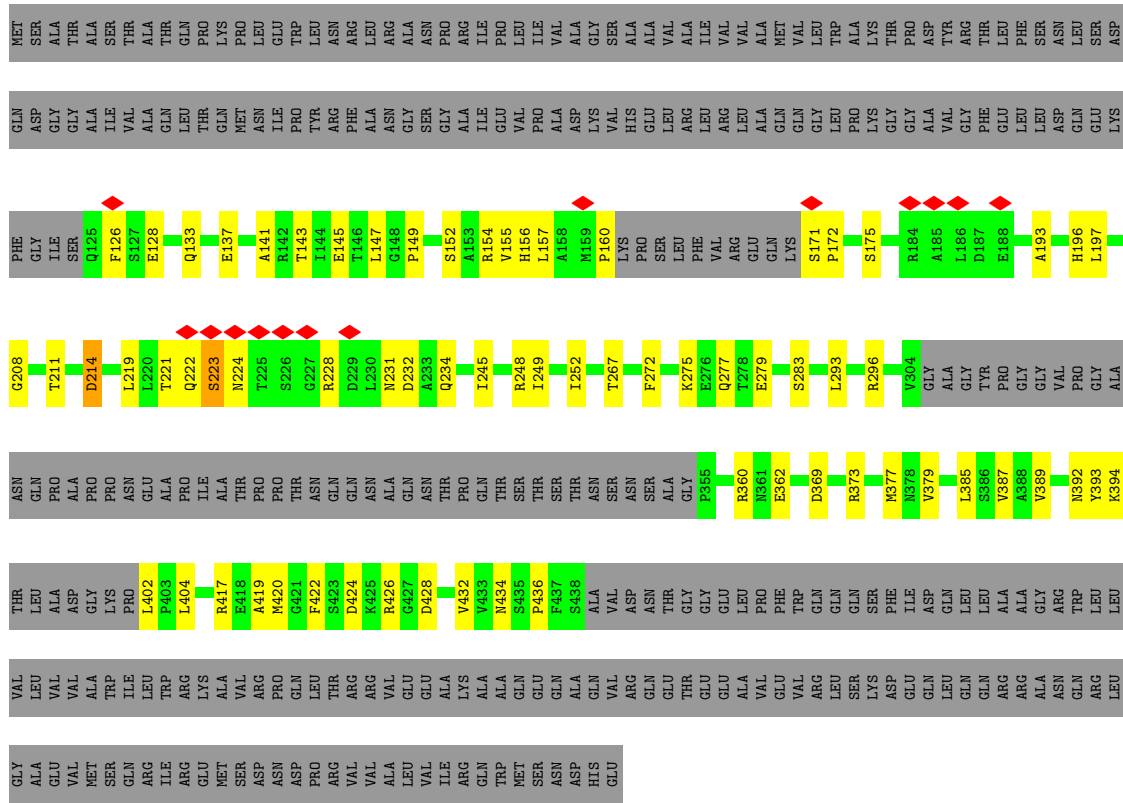
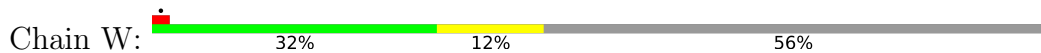


• Molecule 1: Flagellar M-ring protein





● Molecule 1: Flagellar M-ring protein



● Molecule 1: Flagellar M-ring protein

4 Experimental information

Property	Value	Source
EM reconstruction method	SINGLE PARTICLE	Depositor
Imposed symmetry	POINT, C2	Depositor
Number of particles used	140606	Depositor
Resolution determination method	FSC 0.143 CUT-OFF	Depositor
CTF correction method	PHASE FLIPPING AND AMPLITUDE CORRECTION	Depositor
Microscope	FEI TITAN KRIOS	Depositor
Voltage (kV)	300	Depositor
Electron dose ($e^-/\text{\AA}^2$)	48	Depositor
Minimum defocus (nm)	Not provided	
Maximum defocus (nm)	Not provided	
Magnification	Not provided	
Image detector	GATAN K2 QUANTUM (4k x 4k)	Depositor
Maximum map value	0.035	Depositor
Minimum map value	-0.009	Depositor
Average map value	-0.000	Depositor
Map value standard deviation	0.002	Depositor
Recommended contour level	0.005	Depositor
Map size (Å)	355.104, 355.104, 355.104	wwPDB
Map dimensions	432, 432, 432	wwPDB
Map angles (°)	90.0, 90.0, 90.0	wwPDB
Pixel spacing (Å)	0.822, 0.822, 0.822	Depositor

5 Model quality

5.1 Standard geometry

The Z score for a bond length (or angle) is the number of standard deviations the observed value is removed from the expected value. A bond length (or angle) with $|Z| > 5$ is considered an outlier worth inspection. RMSZ is the root-mean-square of all Z scores of the bond lengths (or angles).

Mol	Chain	Bond lengths		Bond angles	
		RMSZ	# $ Z > 5$	RMSZ	# $ Z > 5$
1	A	0.39	0/1919	0.48	0/2598
1	B	0.39	0/1919	0.51	2/2598 (0.1%)
1	C	0.37	0/1919	0.55	3/2598 (0.1%)
1	D	0.38	0/1919	0.49	0/2598
1	E	0.39	0/1919	0.49	0/2598
1	F	0.38	0/1919	0.49	0/2598
1	G	0.41	0/1919	0.67	10/2598 (0.4%)
1	H	0.40	0/1919	0.47	0/2598
1	I	0.40	0/1919	0.60	3/2598 (0.1%)
1	J	0.38	0/1919	0.50	0/2598
1	K	0.39	0/1919	0.48	0/2598
1	L	0.40	0/1919	0.59	5/2598 (0.2%)
1	M	0.42	0/1919	0.58	5/2598 (0.2%)
1	N	0.38	0/1919	0.47	0/2598
1	O	0.41	0/1919	0.53	3/2598 (0.1%)
1	P	0.38	0/1919	0.52	2/2598 (0.1%)
1	Q	0.38	0/1232	0.48	0/1660
1	R	0.39	0/1919	0.50	0/2598
1	S	0.39	0/1919	0.50	0/2598
1	T	0.38	0/1919	0.53	2/2598 (0.1%)
1	U	0.38	0/1919	0.51	0/2598
1	V	0.40	0/1919	0.50	0/2598
1	W	0.39	0/1919	0.45	0/2598
1	X	0.40	0/1919	0.49	1/2598 (0.0%)
1	Y	0.39	0/1919	0.47	0/2598
1	Z	0.40	0/1919	0.53	1/2598 (0.0%)
1	a	0.46	2/1919 (0.1%)	0.58	4/2598 (0.2%)
1	b	0.39	0/1919	0.48	0/2598
1	c	0.40	0/1918	0.52	3/2595 (0.1%)
1	d	0.41	0/1919	0.51	1/2598 (0.0%)
1	e	0.38	0/1919	0.47	0/2598
1	f	0.41	1/1919 (0.1%)	0.55	4/2598 (0.2%)
1	g	0.38	0/1919	0.52	2/2598 (0.1%)
1	h	0.38	0/1232	0.48	0/1660

Mol	Chain	Bond lengths		Bond angles	
		RMSZ	# Z >5	RMSZ	# Z >5
All	All	0.39	3/63871 (0.0%)	0.52	51/86453 (0.1%)

Chiral center outliers are detected by calculating the chiral volume of a chiral center and verifying if the center is modelled as a planar moiety or with the opposite hand. A planarity outlier is detected by checking planarity of atoms in a peptide group, atoms in a mainchain group or atoms of a sidechain that are expected to be planar.

Mol	Chain	#Chirality outliers	#Planarity outliers
1	G	0	1
1	I	0	1
1	L	0	2
1	f	0	1
All	All	0	5

All (3) bond length outliers are listed below:

Mol	Chain	Res	Type	Atoms	Z	Observed(Å)	Ideal(Å)
1	a	160	PRO	N-CA	7.34	1.58	1.47
1	a	171	SER	N-CA	5.85	1.57	1.46
1	f	160	PRO	N-CA	5.27	1.54	1.47

The worst 5 of 51 bond angle outliers are listed below:

Mol	Chain	Res	Type	Atoms	Z	Observed(°)	Ideal(°)
1	I	224	ASN	CA-C-N	-11.67	107.67	122.84
1	I	224	ASN	C-N-CA	-11.67	107.67	122.84
1	G	223	SER	CA-C-N	-10.18	103.38	120.68
1	G	223	SER	C-N-CA	-10.18	103.38	120.68
1	a	160	PRO	N-CA-CB	-9.92	92.08	103.00

There are no chirality outliers.

All (5) planarity outliers are listed below:

Mol	Chain	Res	Type	Group
1	G	222	GLN	Mainchain
1	I	221	THR	Mainchain
1	L	227	GLY	Mainchain
1	L	228	ARG	Sidechain
1	f	159	MET	Mainchain

5.2 Too-close contacts

In the following table, the Non-H and H(model) columns list the number of non-hydrogen atoms and hydrogen atoms in the chain respectively. The H(added) column lists the number of hydrogen atoms added and optimized by MolProbity. The Clashes column lists the number of clashes within the asymmetric unit, whereas Symm-Clashes lists symmetry-related clashes.

Mol	Chain	Non-H	H(model)	H(added)	Clashes	Symm-Clashes
1	A	1897	0	1880	91	0
1	B	1897	0	1880	75	0
1	C	1897	0	1880	74	0
1	D	1897	0	1879	79	0
1	E	1897	0	1880	57	0
1	F	1897	0	1880	60	0
1	G	1897	0	1879	65	0
1	H	1897	0	1880	55	0
1	I	1897	0	1880	62	0
1	J	1897	0	1880	66	0
1	K	1897	0	1880	52	0
1	L	1897	0	1880	81	0
1	M	1897	0	1880	72	0
1	N	1897	0	1880	52	0
1	O	1897	0	1880	65	0
1	P	1897	0	1880	75	0
1	Q	1220	0	1201	25	0
1	R	1897	0	1880	95	0
1	S	1897	0	1878	70	0
1	T	1897	0	1878	61	0
1	U	1897	0	1879	74	0
1	V	1897	0	1880	61	0
1	W	1897	0	1880	66	0
1	X	1897	0	1880	76	0
1	Y	1897	0	1880	56	0
1	Z	1897	0	1880	54	0
1	a	1897	0	1880	77	0
1	b	1897	0	1880	60	0
1	c	1897	0	1879	56	0
1	d	1897	0	1880	83	0
1	e	1897	0	1880	54	0
1	f	1897	0	1880	63	0
1	g	1897	0	1880	77	0
1	h	1220	0	1201	28	0
All	All	63144	0	62554	1812	0

The all-atom clashscore is defined as the number of clashes found per 1000 atoms (including

hydrogen atoms). The all-atom clashscore for this structure is 14.

The worst 5 of 1812 close contacts within the same asymmetric unit are listed below, sorted by their clash magnitude.

Atom-1	Atom-2	Interatomic distance (Å)	Clash overlap (Å)
1:W:196:HIS:CE1	1:X:224:ASN:HB3	1.38	1.54
1:a:221:THR:HG23	1:a:224:ASN:ND2	1.25	1.45
1:a:221:THR:CG2	1:a:224:ASN:HD22	1.32	1.39
1:R:187:ASP:OD2	1:S:207:PRO:CD	1.72	1.37
1:H:229:ASP:CB	1:I:224:ASN:HD21	1.43	1.32

There are no symmetry-related clashes.

5.3 Torsion angles [i](#)

5.3.1 Protein backbone [i](#)

In the following table, the Percentiles column shows the percent Ramachandran outliers of the chain as a percentile score with respect to all PDB entries followed by that with respect to all EM entries.

The Analysed column shows the number of residues for which the backbone conformation was analysed, and the total number of residues.

Mol	Chain	Analysed	Favoured	Allowed	Outliers	Percentiles	
1	A	239/560 (43%)	213 (89%)	25 (10%)	1 (0%)	30	60
1	B	239/560 (43%)	214 (90%)	24 (10%)	1 (0%)	30	60
1	C	239/560 (43%)	212 (89%)	26 (11%)	1 (0%)	30	60
1	D	239/560 (43%)	210 (88%)	28 (12%)	1 (0%)	30	60
1	E	239/560 (43%)	210 (88%)	28 (12%)	1 (0%)	30	60
1	F	239/560 (43%)	212 (89%)	27 (11%)	0	100	100
1	G	239/560 (43%)	213 (89%)	24 (10%)	2 (1%)	16	45
1	H	239/560 (43%)	213 (89%)	24 (10%)	2 (1%)	16	45
1	I	239/560 (43%)	213 (89%)	23 (10%)	3 (1%)	9	35
1	J	239/560 (43%)	216 (90%)	22 (9%)	1 (0%)	30	60
1	K	239/560 (43%)	211 (88%)	27 (11%)	1 (0%)	30	60
1	L	239/560 (43%)	205 (86%)	28 (12%)	6 (2%)	4	23
1	M	239/560 (43%)	205 (86%)	31 (13%)	3 (1%)	9	35

Continued on next page...

Continued from previous page...

Mol	Chain	Analysed	Favoured	Allowed	Outliers	Percentiles	
1	N	239/560 (43%)	210 (88%)	26 (11%)	3 (1%)	9	35
1	O	239/560 (43%)	209 (87%)	27 (11%)	3 (1%)	9	35
1	P	239/560 (43%)	215 (90%)	24 (10%)	0	100	100
1	Q	148/560 (26%)	133 (90%)	14 (10%)	1 (1%)	18	49
1	R	239/560 (43%)	211 (88%)	27 (11%)	1 (0%)	30	60
1	S	239/560 (43%)	215 (90%)	23 (10%)	1 (0%)	30	60
1	T	239/560 (43%)	212 (89%)	26 (11%)	1 (0%)	30	60
1	U	239/560 (43%)	209 (87%)	29 (12%)	1 (0%)	30	60
1	V	239/560 (43%)	211 (88%)	27 (11%)	1 (0%)	30	60
1	W	239/560 (43%)	212 (89%)	26 (11%)	1 (0%)	30	60
1	X	239/560 (43%)	212 (89%)	24 (10%)	3 (1%)	9	35
1	Y	239/560 (43%)	212 (89%)	25 (10%)	2 (1%)	16	45
1	Z	239/560 (43%)	213 (89%)	24 (10%)	2 (1%)	16	45
1	a	239/560 (43%)	213 (89%)	23 (10%)	3 (1%)	9	35
1	b	239/560 (43%)	210 (88%)	27 (11%)	2 (1%)	16	45
1	c	237/560 (42%)	210 (89%)	25 (10%)	2 (1%)	16	45
1	d	239/560 (43%)	210 (88%)	27 (11%)	2 (1%)	16	45
1	e	239/560 (43%)	209 (87%)	28 (12%)	2 (1%)	16	45
1	f	239/560 (43%)	208 (87%)	28 (12%)	3 (1%)	9	35
1	g	239/560 (43%)	212 (89%)	27 (11%)	0	100	100
1	h	148/560 (26%)	133 (90%)	14 (10%)	1 (1%)	18	49
All	All	7942/19040 (42%)	7026 (88%)	858 (11%)	58 (1%)	20	49

5 of 58 Ramachandran outliers are listed below:

Mol	Chain	Res	Type
1	G	172	PRO
1	G	223	SER
1	I	223	SER
1	L	172	PRO
1	L	228	ARG

5.3.2 Protein sidechains

In the following table, the Percentiles column shows the percent sidechain outliers of the chain as a percentile score with respect to all PDB entries followed by that with respect to all EM entries.

The Analysed column shows the number of residues for which the sidechain conformation was analysed, and the total number of residues.

Mol	Chain	Analysed	Rotameric	Outliers	Percentiles	
1	A	213/467 (46%)	211 (99%)	2 (1%)	70	78
1	B	213/467 (46%)	211 (99%)	2 (1%)	70	78
1	C	213/467 (46%)	210 (99%)	3 (1%)	59	73
1	D	213/467 (46%)	211 (99%)	2 (1%)	70	78
1	E	213/467 (46%)	212 (100%)	1 (0%)	81	83
1	F	213/467 (46%)	211 (99%)	2 (1%)	70	78
1	G	213/467 (46%)	210 (99%)	3 (1%)	59	73
1	H	213/467 (46%)	210 (99%)	3 (1%)	59	73
1	I	213/467 (46%)	210 (99%)	3 (1%)	59	73
1	J	213/467 (46%)	211 (99%)	2 (1%)	70	78
1	K	213/467 (46%)	211 (99%)	2 (1%)	70	78
1	L	213/467 (46%)	206 (97%)	7 (3%)	33	59
1	M	213/467 (46%)	209 (98%)	4 (2%)	50	68
1	N	213/467 (46%)	212 (100%)	1 (0%)	81	83
1	O	213/467 (46%)	210 (99%)	3 (1%)	59	73
1	P	213/467 (46%)	210 (99%)	3 (1%)	59	73
1	Q	137/467 (29%)	136 (99%)	1 (1%)	76	80
1	R	213/467 (46%)	211 (99%)	2 (1%)	70	78
1	S	213/467 (46%)	212 (100%)	1 (0%)	81	83
1	T	213/467 (46%)	210 (99%)	3 (1%)	59	73
1	U	213/467 (46%)	211 (99%)	2 (1%)	70	78
1	V	213/467 (46%)	211 (99%)	2 (1%)	70	78
1	W	213/467 (46%)	211 (99%)	2 (1%)	70	78
1	X	213/467 (46%)	211 (99%)	2 (1%)	70	78
1	Y	213/467 (46%)	209 (98%)	4 (2%)	50	68
1	Z	213/467 (46%)	210 (99%)	3 (1%)	59	73

Continued on next page...

Continued from previous page...

Mol	Chain	Analysed	Rotameric	Outliers	Percentiles	
1	a	213/467 (46%)	210 (99%)	3 (1%)	59	73
1	b	213/467 (46%)	209 (98%)	4 (2%)	50	68
1	c	213/467 (46%)	210 (99%)	3 (1%)	59	73
1	d	213/467 (46%)	209 (98%)	4 (2%)	50	68
1	e	213/467 (46%)	212 (100%)	1 (0%)	81	83
1	f	213/467 (46%)	209 (98%)	4 (2%)	50	68
1	g	213/467 (46%)	210 (99%)	3 (1%)	59	73
1	h	137/467 (29%)	136 (99%)	1 (1%)	76	80
All	All	7090/15878 (45%)	7002 (99%)	88 (1%)	61	75

5 of 88 residues with a non-rotameric sidechain are listed below:

Mol	Chain	Res	Type
1	X	214	ASP
1	b	369	ASP
1	Y	222	GLN
1	a	160	PRO
1	d	160	PRO

Sometimes sidechains can be flipped to improve hydrogen bonding and reduce clashes. 5 of 207 such sidechains are listed below:

Mol	Chain	Res	Type
1	S	263	HIS
1	Y	218	HIS
1	g	274	ASN
1	T	361	ASN
1	W	222	GLN

5.3.3 RNA [i](#)

There are no RNA molecules in this entry.

5.4 Non-standard residues in protein, DNA, RNA chains [i](#)

There are no non-standard protein/DNA/RNA residues in this entry.

5.5 Carbohydrates [i](#)

There are no oligosaccharides in this entry.

5.6 Ligand geometry [i](#)

There are no ligands in this entry.

5.7 Other polymers [i](#)

There are no such residues in this entry.

5.8 Polymer linkage issues [i](#)

The following chains have linkage breaks:

Mol	Chain	Number of breaks
1	c	1

All chain breaks are listed below:

Model	Chain	Residue-1	Atom-1	Residue-2	Atom-2	Distance (Å)
1	c	228:ARG	C	229:ASP	N	5.41

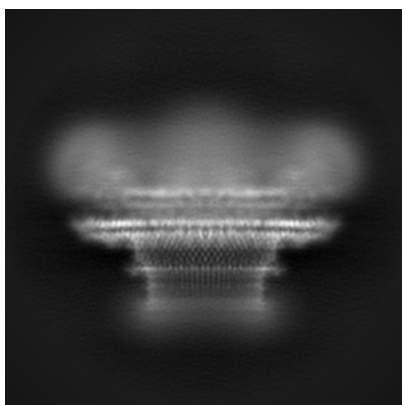
6 Map visualisation [i](#)

This section contains visualisations of the EMDB entry EMD-10147. These allow visual inspection of the internal detail of the map and identification of artifacts.

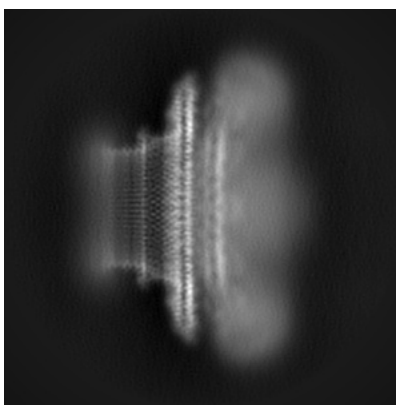
No raw map or half-maps were deposited for this entry and therefore no images, graphs, etc. pertaining to the raw map can be shown.

6.1 Orthogonal projections [i](#)

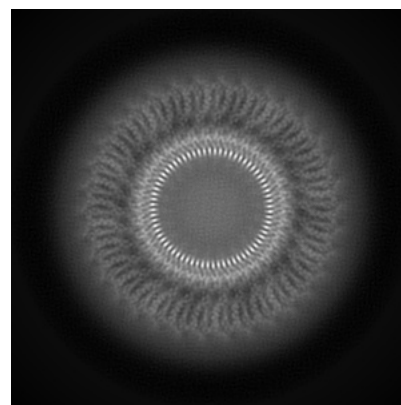
6.1.1 Primary map



X



Y

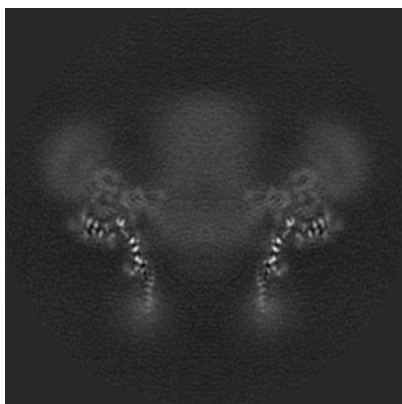


Z

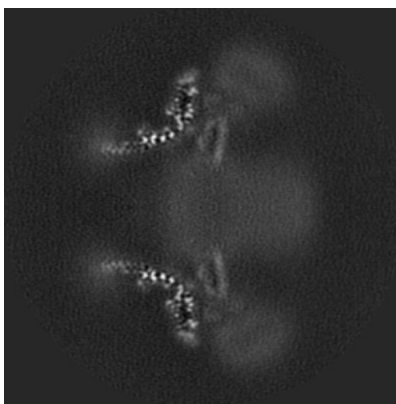
The images above show the map projected in three orthogonal directions.

6.2 Central slices [i](#)

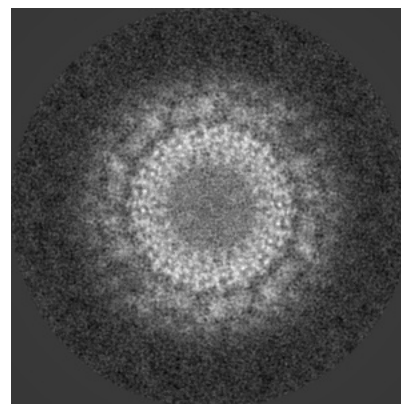
6.2.1 Primary map



X Index: 216



Y Index: 216

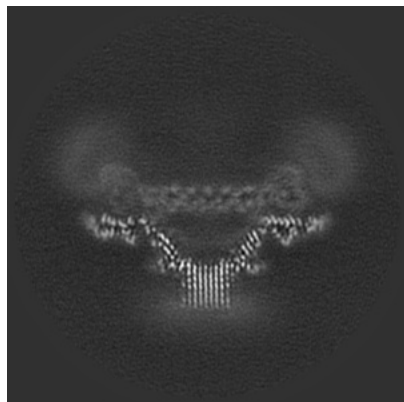


Z Index: 216

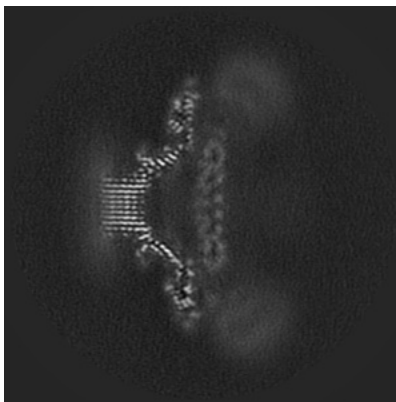
The images above show central slices of the map in three orthogonal directions.

6.3 Largest variance slices [\(i\)](#)

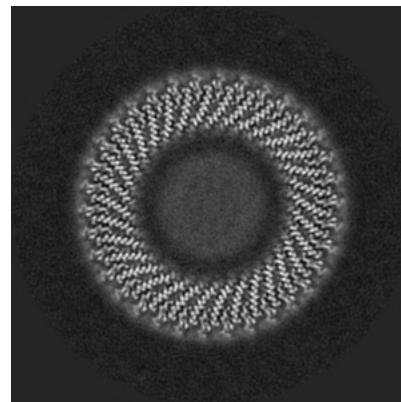
6.3.1 Primary map



X Index: 154



Y Index: 275

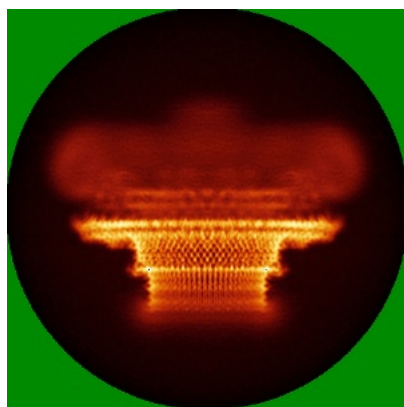


Z Index: 199

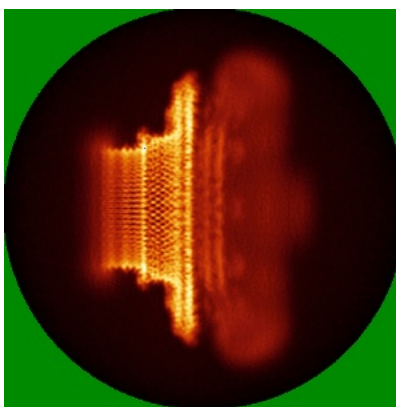
The images above show the largest variance slices of the map in three orthogonal directions.

6.4 Orthogonal standard-deviation projections (False-color) [\(i\)](#)

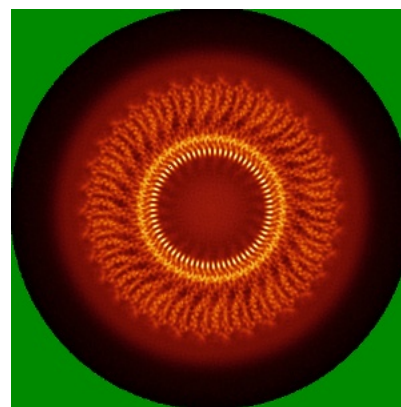
6.4.1 Primary map



X



Y

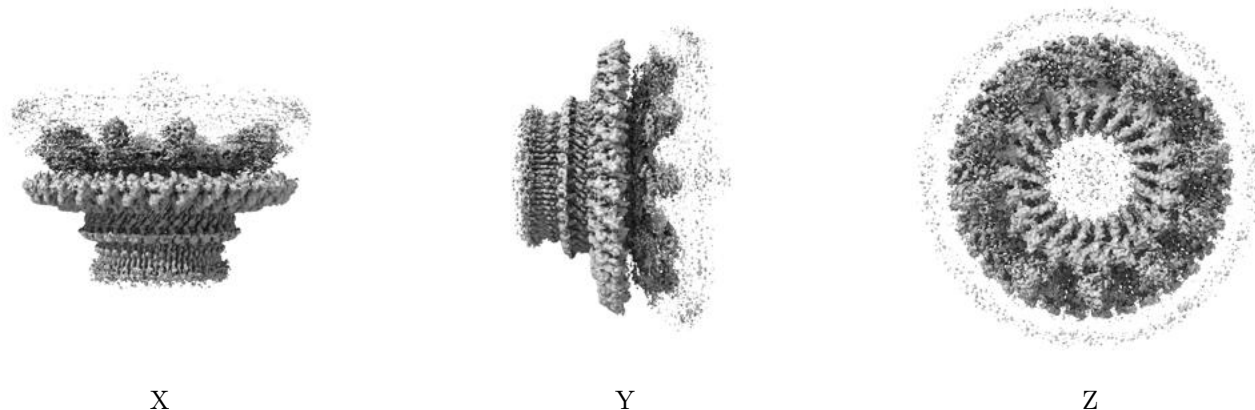


Z

The images above show the map standard deviation projections with false color in three orthogonal directions. Minimum values are shown in green, max in blue, and dark to light orange shades represent small to large values respectively.

6.5 Orthogonal surface views [i](#)

6.5.1 Primary map



The images above show the 3D surface view of the map at the recommended contour level 0.005. These images, in conjunction with the slice images, may facilitate assessment of whether an appropriate contour level has been provided.

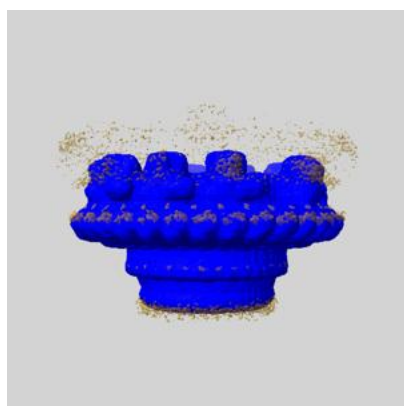
6.6 Mask visualisation [i](#)

This section shows the 3D surface view of the primary map at 50% transparency overlaid with the specified mask at 0% transparency

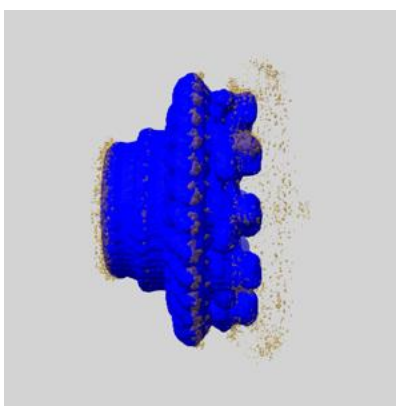
A mask typically either:

- Encompasses the whole structure
- Separates out a domain, a functional unit, a monomer or an area of interest from a larger structure

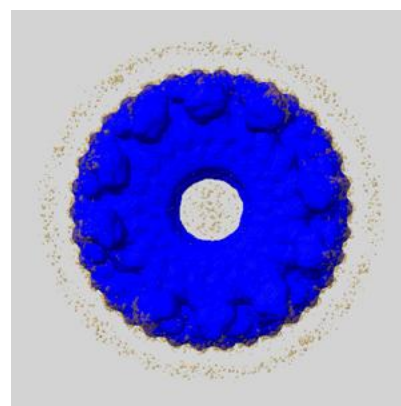
6.6.1 emd_10147_msk_1.map [i](#)



X



Y

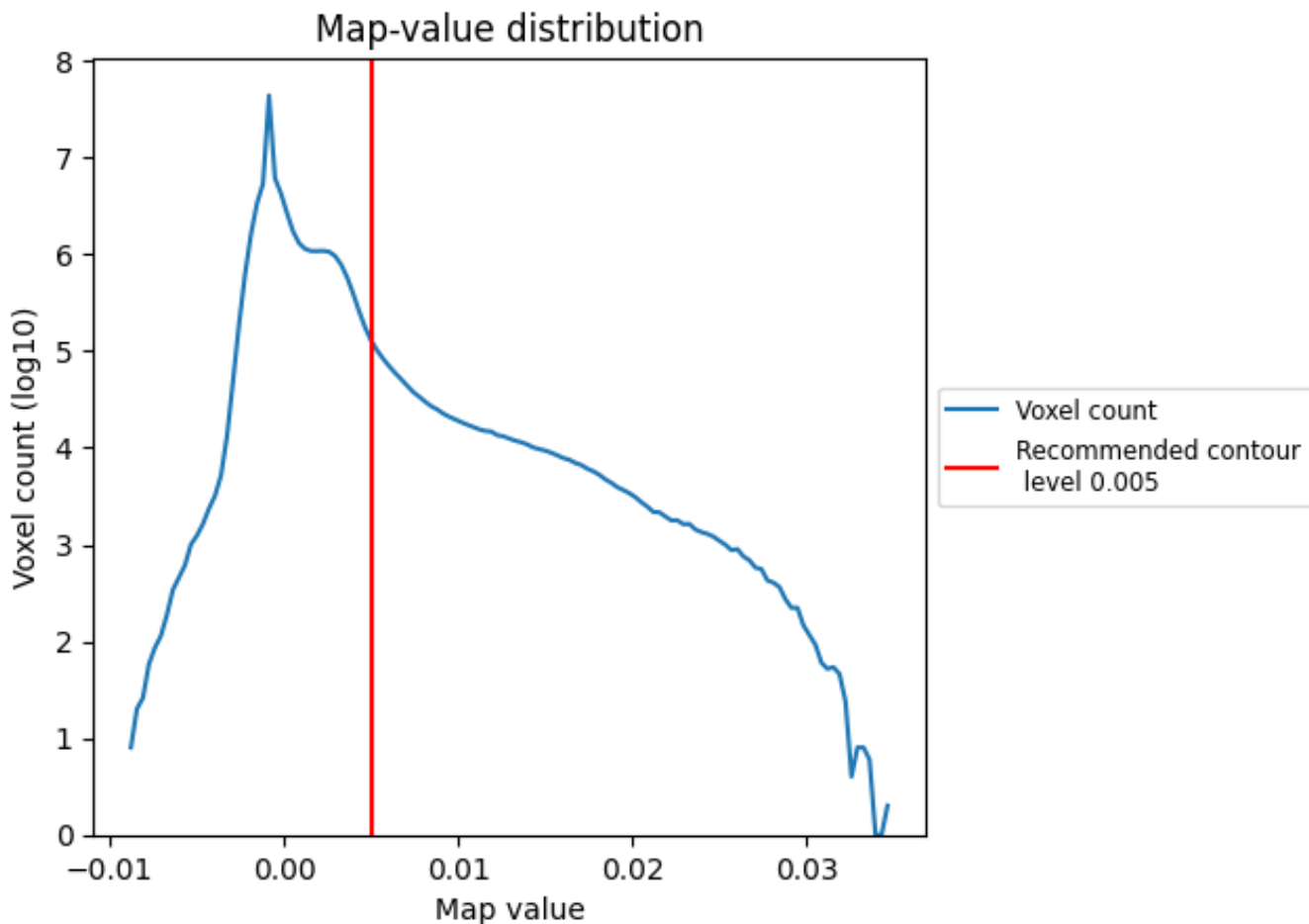


Z

7 Map analysis [i](#)

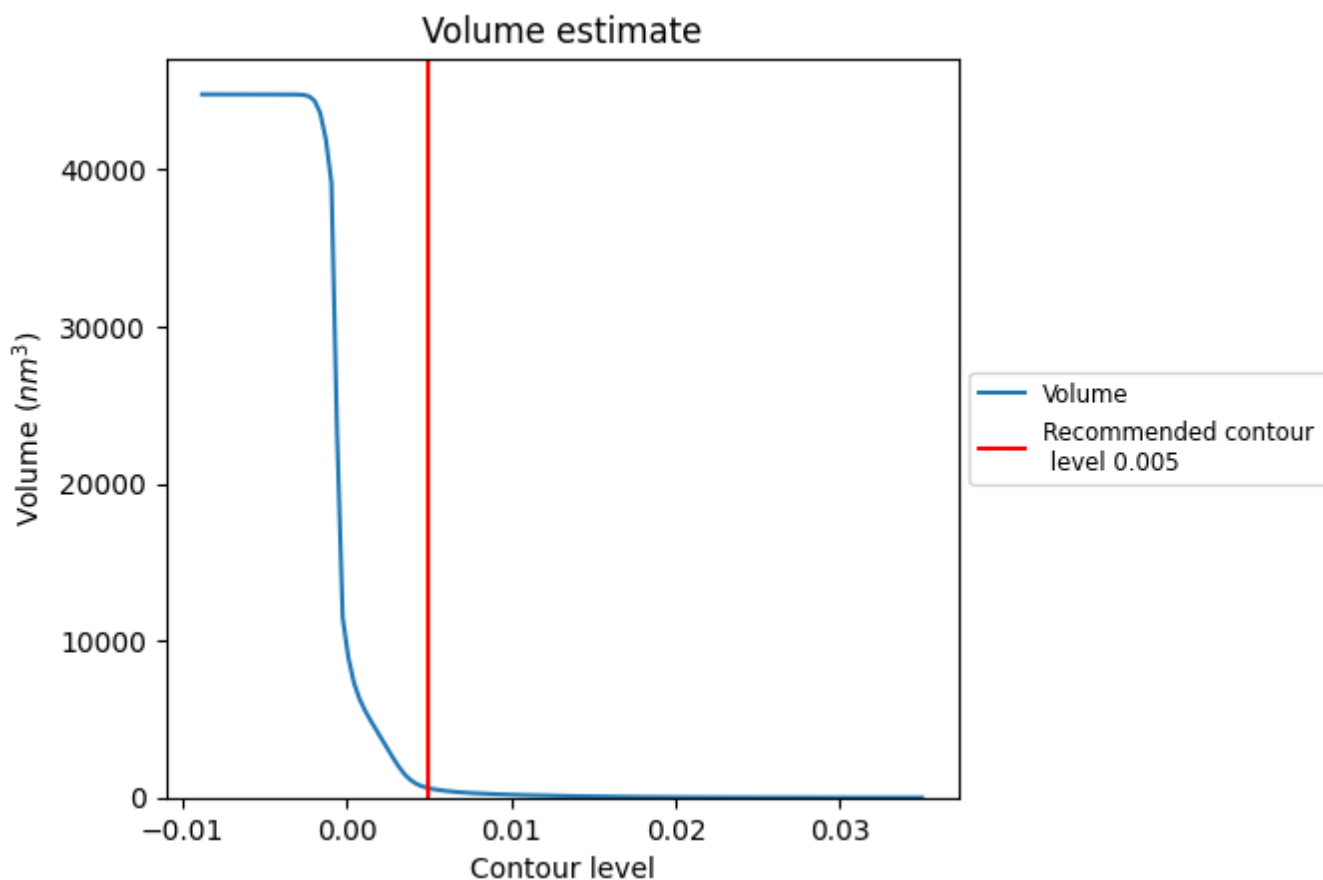
This section contains the results of statistical analysis of the map.

7.1 Map-value distribution [i](#)



The map-value distribution is plotted in 128 intervals along the x-axis. The y-axis is logarithmic. A spike in this graph at zero usually indicates that the volume has been masked.

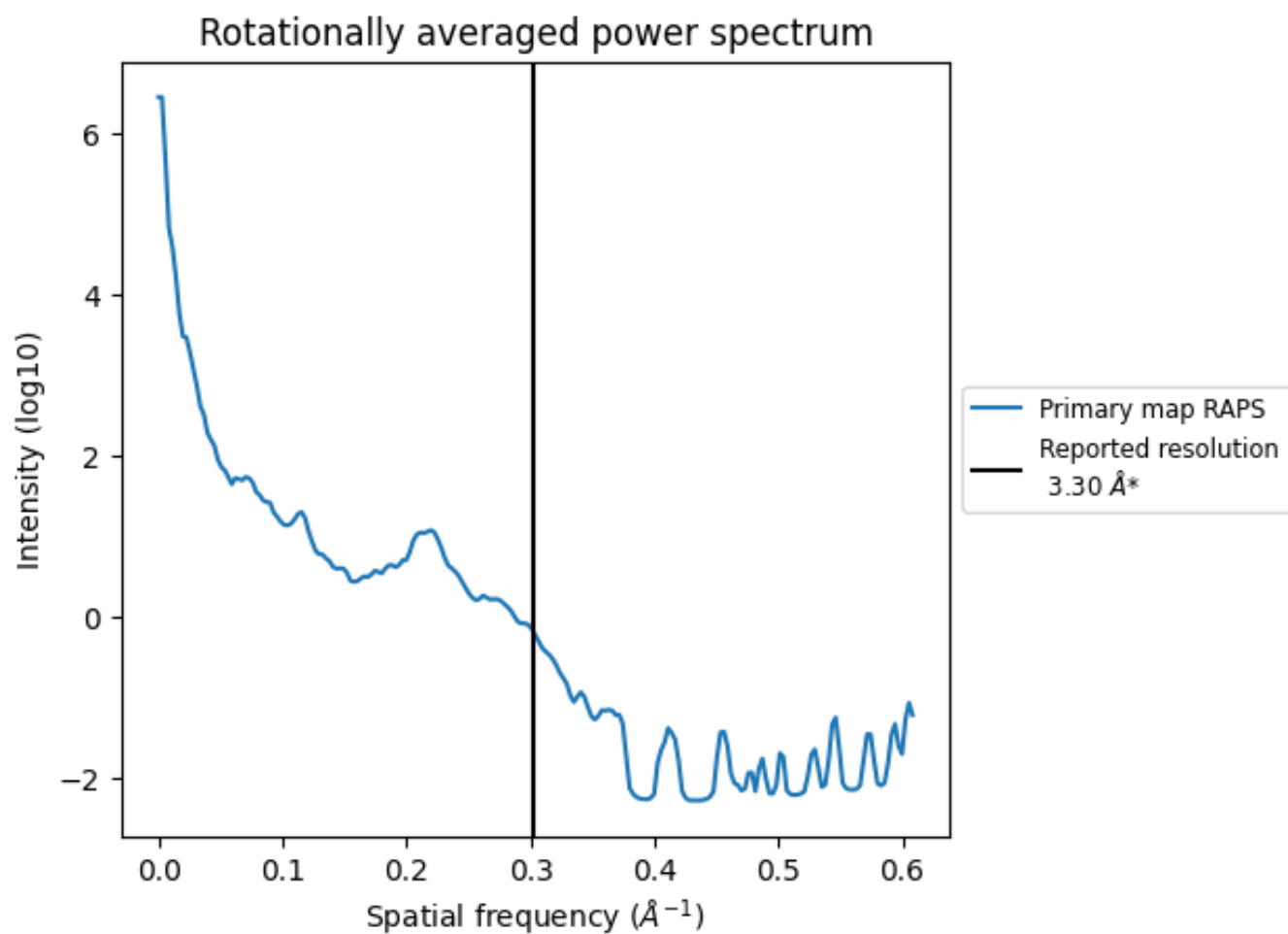
7.2 Volume estimate [i](#)



The volume at the recommended contour level is 600 nm³; this corresponds to an approximate mass of 542 kDa.

The volume estimate graph shows how the enclosed volume varies with the contour level. The recommended contour level is shown as a vertical line and the intersection between the line and the curve gives the volume of the enclosed surface at the given level.

7.3 Rotationally averaged power spectrum [i](#)

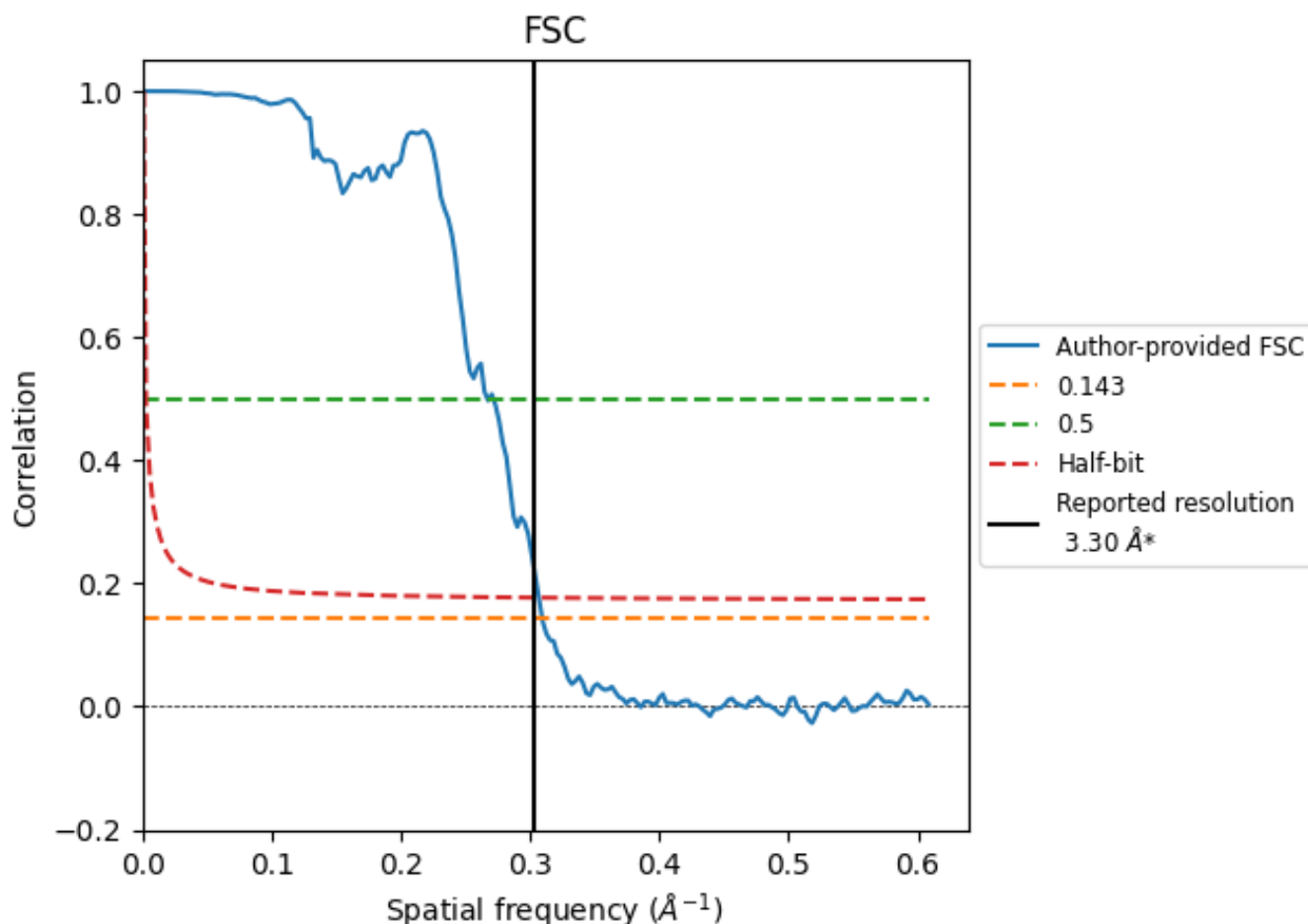


*Reported resolution corresponds to spatial frequency of 0.303\AA^{-1}

8 Fourier-Shell correlation [i](#)

Fourier-Shell Correlation (FSC) is the most commonly used method to estimate the resolution of single-particle and subtomogram-averaged maps. The shape of the curve depends on the imposed symmetry, mask and whether or not the two 3D reconstructions used were processed from a common reference. The reported resolution is shown as a black line. A curve is displayed for the half-bit criterion in addition to lines showing the 0.143 gold standard cut-off and 0.5 cut-off.

8.1 FSC [i](#)



*Reported resolution corresponds to spatial frequency of 0.303 Å⁻¹

8.2 Resolution estimates [i](#)

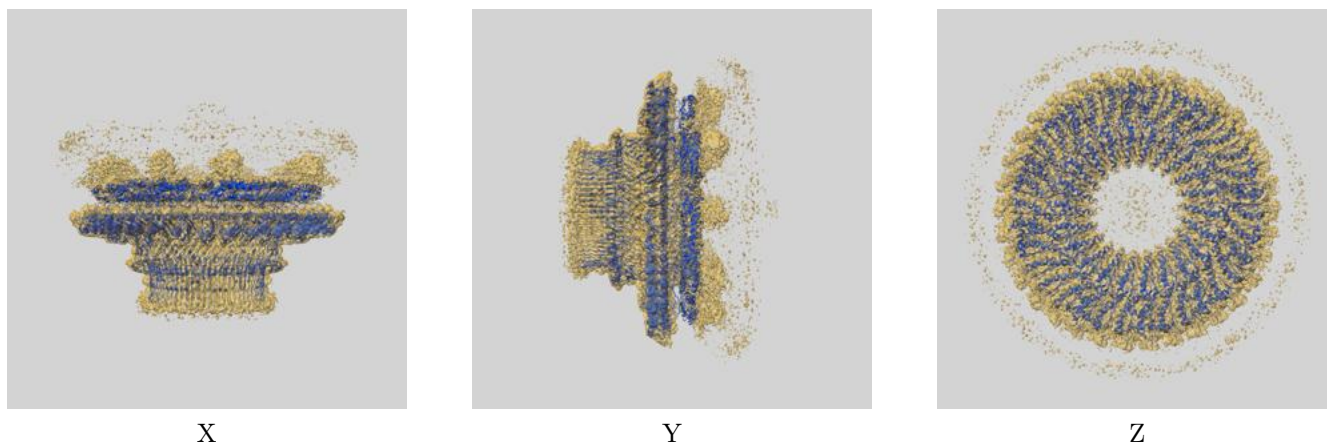
Resolution estimate (Å)	Estimation criterion (FSC cut-off)		
	0.143	0.5	Half-bit
Reported by author	3.30	-	-
Author-provided FSC curve	3.23	3.75	3.26
Unmasked-calculated*	-	-	-

*Resolution estimate based on FSC curve calculated by comparison of deposited half-maps.

9 Map-model fit [i](#)

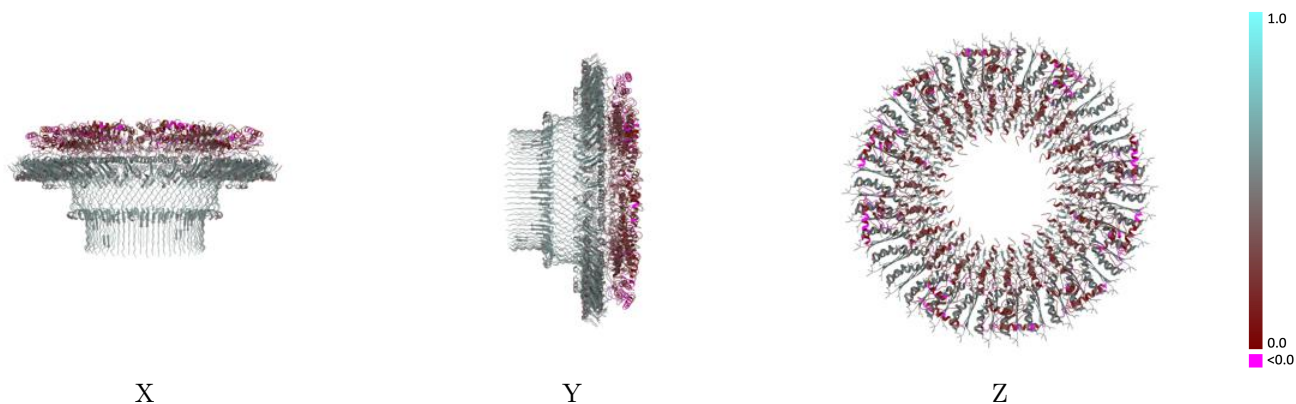
This section contains information regarding the fit between EMDB map EMD-10147 and PDB model 6SD3. Per-residue inclusion information can be found in section 3 on page 7.

9.1 Map-model overlay [i](#)



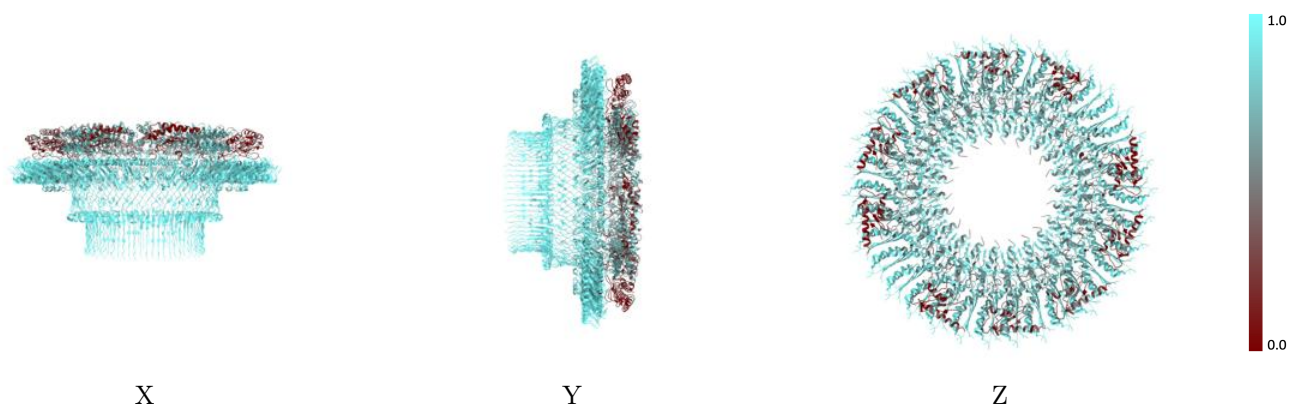
The images above show the 3D surface view of the map at the recommended contour level 0.005 at 50% transparency in yellow overlaid with a ribbon representation of the model coloured in blue. These images allow for the visual assessment of the quality of fit between the atomic model and the map.

9.2 Q-score mapped to coordinate model [i](#)



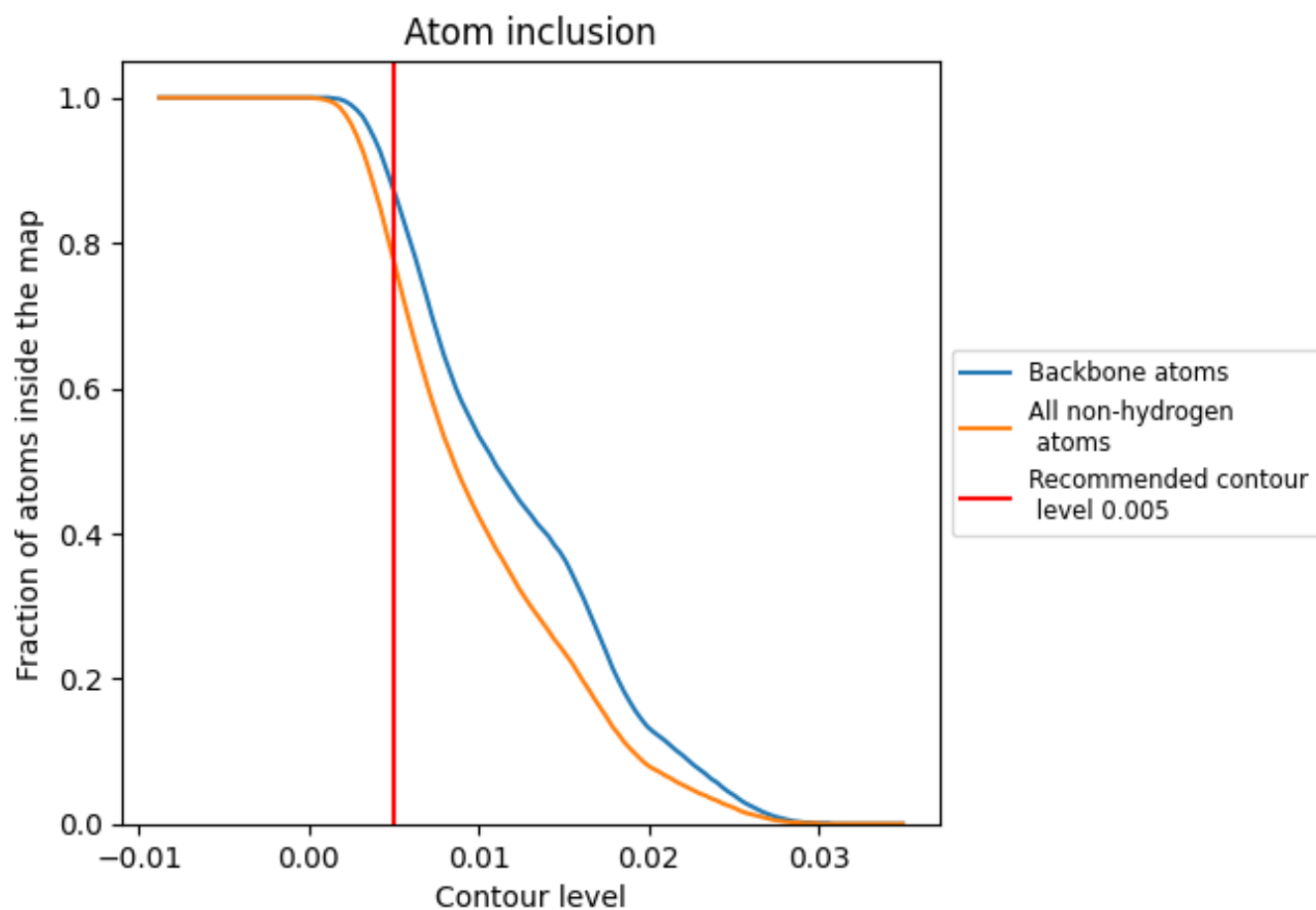
The images above show the model with each residue coloured according to its Q-score. This shows their resolvability in the map with higher Q-score values reflecting better resolvability. Please note: Q-score is calculating the resolvability of atoms, and thus high values are only expected at resolutions at which atoms can be resolved. Low Q-score values may therefore be expected for many entries.

9.3 Atom inclusion mapped to coordinate model [i](#)



The images above show the model with each residue coloured according to its atom inclusion. This shows to what extent they are inside the map at the recommended contour level (0.005).

9.4 Atom inclusion [i](#)



At the recommended contour level, 87% of all backbone atoms, 78% of all non-hydrogen atoms, are inside the map.

9.5 Map-model fit summary

The table lists the average atom inclusion at the recommended contour level (0.005) and Q-score for the entire model and for each chain.

Chain	Atom inclusion	Q-score
All	0.7770	0.4150
A	0.8220	0.4200
B	0.6220	0.3750
C	0.8240	0.4290
D	0.8190	0.4300
E	0.6500	0.3670
F	0.8240	0.4310
G	0.8310	0.4350
H	0.6760	0.3890
I	0.8120	0.4210
J	0.8180	0.4190
K	0.6850	0.3910
L	0.8250	0.4230
M	0.8180	0.4150
N	0.6420	0.3820
O	0.8210	0.4190
P	0.8340	0.4240
Q	0.9290	0.5090
R	0.8230	0.4190
S	0.6210	0.3770
T	0.8270	0.4310
U	0.8230	0.4300
V	0.6510	0.3670
W	0.8240	0.4320
X	0.8320	0.4350
Y	0.6790	0.3890
Z	0.8100	0.4200
a	0.8150	0.4180
b	0.6840	0.3930
c	0.8260	0.4240
d	0.8240	0.4210
e	0.6450	0.3830
f	0.8230	0.4220
g	0.8290	0.4230
h	0.9290	0.5110

