



Full wwPDB EM Validation Report ⓘ

Mar 9, 2026 – 03:27 PM UTC

PDB ID : 8SOA / pdb_00008soa
EMDB ID : EMD-40651
Title : Phosphoinositide phosphate 3 kinase gamma bound with ATP
Authors : Chen, C.-L.; Tesmer, J.J.G.
Deposited on : 2023-04-28
Resolution : 3.32 Å (reported)
Based on initial model : .

This is a Full wwPDB EM Validation Report for a publicly released PDB entry.

We welcome your comments at validation@mail.wwpdb.org

A user guide is available at

<https://www.wwpdb.org/validation/2017/EMValidationReportHelp>

with specific help available everywhere you see the ⓘ symbol.

The types of validation reports are described at

<http://www.wwpdb.org/validation/2017/FAQs#types>.

The following versions of software and data (see [references ⓘ](#)) were used in the production of this report:

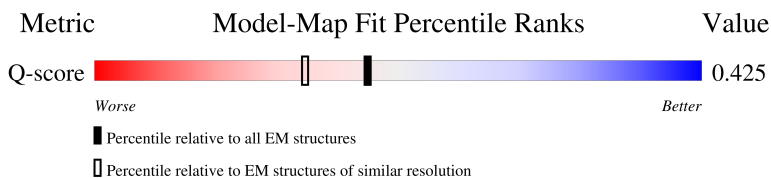
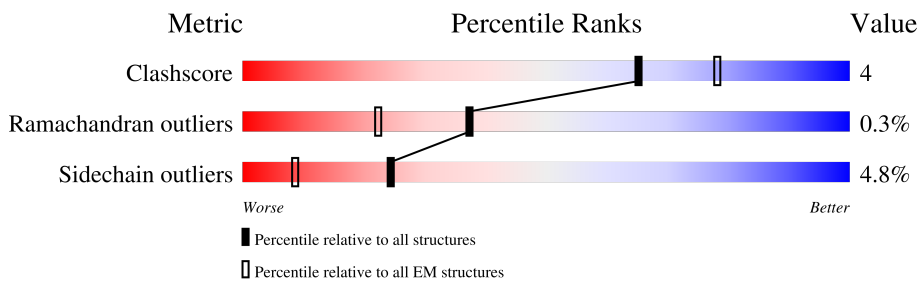
EMDB validation analysis : 0.0.1.dev132
Mogul : 2022.3.0, CSD as543be (2022)
MolProbity : 4-5-2 with Phenix2.0
Buster-report : wwPDB partial adaption of 1.1.7 (2018)
Percentile statistics : 20250101.v01 (using entries in the PDB archive January 1st 2025)
EM percentile statistics : 202505.v01 (Using data in the EMDB archive up until May 2025)
MapQ : 1.9.13
Ideal geometry (proteins) : Engh & Huber (2001)
Ideal geometry (DNA, RNA) : Parkinson et al. (1996)
Validation Pipeline (wwPDB-VP) : 2.49

1 Overall quality at a glance i

The following experimental techniques were used to determine the structure:
ELECTRON MICROSCOPY

The reported resolution of this entry is 3.32 Å.

Percentile scores (ranging between 0-100) for global validation metrics of the entry are shown in the following graphic. The table shows the number of entries on which the scores are based.



Metric	Whole archive (#Entries)	EM structures (#Entries)	Similar EM resolution (#Entries, resolution range(Å))
Clashscore	229148	23984	-
Ramachandran outliers	224038	23583	-
Sidechain outliers	223484	23102	-
Q-score	-	25397	14518 (2.82 - 3.82)

The table below summarises the geometric issues observed across the polymeric chains and their fit to the map. The red, orange, yellow and green segments of the bar indicate the fraction of residues that contain outliers for ≥ 3 , 2, 1 and 0 types of geometric quality criteria respectively. A grey segment represents the fraction of residues that are not modelled. The numeric value for each fraction is indicated below the corresponding segment, with a dot representing fractions $\leq 5\%$. The upper red bar (where present) indicates the fraction of residues that have poor fit to the EM map (all-atom inclusion $< 40\%$). The numeric value is given above the bar.

Mol	Chain	Length	Quality of chain
1	A	1108	 75% 12% 11%
2	B	890	 50% 6% 44%

2 Entry composition i

There are 3 unique types of molecules in this entry. The entry contains 24051 atoms, of which 12078 are hydrogens and 0 are deuteriums.

In the tables below, the AltConf column contains the number of residues with at least one atom in alternate conformation and the Trace column contains the number of residues modelled with at most 2 atoms.

- Molecule 1 is a protein called phosphatidylinositol-4,5-bisphosphate 3-kinase.

Mol	Chain	Residues	Atoms						AltConf	Trace
			Total	C	H	N	O	S		
1	A	984	16081	5156	8074	1364	1446	41	0	0

There are 7 discrepancies between the modelled and reference sequences:

Chain	Residue	Modelled	Actual	Comment	Reference
A	-5	MET	-	initiating methionine	UNP A0A8D1WUA4
A	-4	HIS	-	expression tag	UNP A0A8D1WUA4
A	-3	HIS	-	expression tag	UNP A0A8D1WUA4
A	-2	HIS	-	expression tag	UNP A0A8D1WUA4
A	-1	HIS	-	expression tag	UNP A0A8D1WUA4
A	0	HIS	-	expression tag	UNP A0A8D1WUA4
A	1	HIS	-	expression tag	UNP A0A8D1WUA4

- Molecule 2 is a protein called Phosphoinositide 3-kinase regulatory subunit 5.

Mol	Chain	Residues	Atoms						AltConf	Trace
			Total	C	H	N	O	S		
2	B	497	7927	2518	3992	676	721	20	0	0

There are 13 discrepancies between the modelled and reference sequences:

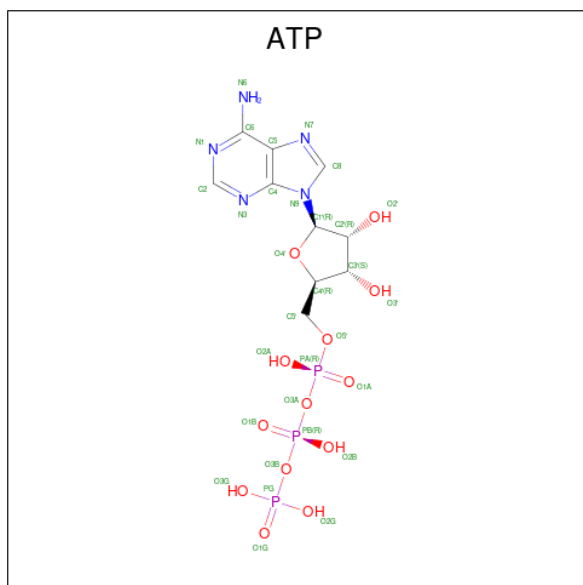
Chain	Residue	Modelled	Actual	Comment	Reference
B	878	GLY	-	expression tag	UNP A0A8D0T2D6
B	879	GLY	-	expression tag	UNP A0A8D0T2D6
B	880	GLY	-	expression tag	UNP A0A8D0T2D6
B	881	GLY	-	expression tag	UNP A0A8D0T2D6
B	882	SER	-	expression tag	UNP A0A8D0T2D6
B	883	ASP	-	expression tag	UNP A0A8D0T2D6
B	884	TYR	-	expression tag	UNP A0A8D0T2D6
B	885	LYS	-	expression tag	UNP A0A8D0T2D6
B	886	ASP	-	expression tag	UNP A0A8D0T2D6
B	887	ASP	-	expression tag	UNP A0A8D0T2D6

Continued on next page...

Continued from previous page...

Chain	Residue	Modelled	Actual	Comment	Reference
B	888	ASP	-	expression tag	UNP A0A8D0T2D6
B	889	ASP	-	expression tag	UNP A0A8D0T2D6
B	890	LYS	-	expression tag	UNP A0A8D0T2D6

- Molecule 3 is ADENOSINE-5'-TRIPHOSPHATE (CCD ID: ATP) (formula: C₁₀H₁₆N₅O₁₃P₃) (labeled as "Ligand of Interest" by depositor).



Mol	Chain	Residues	Atoms					AltConf	
			Total	C	H	N	O		P
3	A	1	43	10	12	5	13	3	0

4 Experimental information

Property	Value	Source
EM reconstruction method	SINGLE PARTICLE	Depositor
Imposed symmetry	POINT, Not provided	
Number of particles used	200533	Depositor
Resolution determination method	FSC 0.143 CUT-OFF	Depositor
CTF correction method	PHASE FLIPPING AND AMPLITUDE CORRECTION	Depositor
Microscope	FEI TITAN KRIOS	Depositor
Voltage (kV)	300	Depositor
Electron dose ($e^-/\text{\AA}^2$)	55	Depositor
Minimum defocus (nm)	1000	Depositor
Maximum defocus (nm)	3000	Depositor
Magnification	81000	Depositor
Image detector	GATAN K3 BIOQUANTUM (6k x 4k)	Depositor
Maximum map value	1.751	Depositor
Minimum map value	-0.937	Depositor
Average map value	0.001	Depositor
Map value standard deviation	0.027	Depositor
Recommended contour level	0.18	Depositor
Map size (\AA)	345.6, 345.6, 345.6	wwPDB
Map dimensions	320, 320, 320	wwPDB
Map angles ($^\circ$)	90.0, 90.0, 90.0	wwPDB
Pixel spacing (\AA)	1.08, 1.08, 1.08	Depositor

5 Model quality [i](#)

5.1 Standard geometry [i](#)

Bond lengths and bond angles in the following residue types are not validated in this section: ATP

The Z score for a bond length (or angle) is the number of standard deviations the observed value is removed from the expected value. A bond length (or angle) with $|Z| > 5$ is considered an outlier worth inspection. RMSZ is the root-mean-square of all Z scores of the bond lengths (or angles).

Mol	Chain	Bond lengths		Bond angles	
		RMSZ	# Z >5	RMSZ	# Z >5
1	A	0.19	0/8188	0.36	0/11084
2	B	0.15	0/4012	0.34	1/5441 (0.0%)
All	All	0.18	0/12200	0.35	1/16525 (0.0%)

Chiral center outliers are detected by calculating the chiral volume of a chiral center and verifying if the center is modelled as a planar moiety or with the opposite hand. A planarity outlier is detected by checking planarity of atoms in a peptide group, atoms in a mainchain group or atoms of a sidechain that are expected to be planar.

Mol	Chain	#Chirality outliers	#Planarity outliers
1	A	0	1

There are no bond length outliers.

All (1) bond angle outliers are listed below:

Mol	Chain	Res	Type	Atoms	Z	Observed($^{\circ}$)	Ideal($^{\circ}$)
2	B	529	VAL	N-CA-C	-6.92	103.59	110.30

There are no chirality outliers.

All (1) planarity outliers are listed below:

Mol	Chain	Res	Type	Group
1	A	700	ARG	Sidechain

5.2 Too-close contacts [i](#)

In the following table, the Non-H and H(model) columns list the number of non-hydrogen atoms and hydrogen atoms in the chain respectively. The H(added) column lists the number of hydrogen atoms added and optimized by MolProbity. The Clashes column lists the number of clashes within

the asymmetric unit, whereas Symm-Clashes lists symmetry-related clashes.

Mol	Chain	Non-H	H(model)	H(added)	Clashes	Symm-Clashes
1	A	8007	8074	8065	70	0
2	B	3935	3992	3983	26	0
3	A	31	12	12	1	0
All	All	11973	12078	12060	95	0

The all-atom clashscore is defined as the number of clashes found per 1000 atoms (including hydrogen atoms). The all-atom clashscore for this structure is 4.

All (95) close contacts within the same asymmetric unit are listed below, sorted by their clash magnitude.

Atom-1	Atom-2	Interatomic distance (Å)	Clash overlap (Å)
1:A:435:CYS:SG	1:A:436:GLY:N	2.56	0.79
2:B:725:THR:O	2:B:807:SER:OG	2.03	0.73
1:A:339:LEU:O	1:A:353:SER:N	2.22	0.73
1:A:988:THR:OG1	1:A:990:ASP:OD1	2.07	0.70
2:B:531:ARG:NH2	2:B:816:LEU:O	2.29	0.65
1:A:184:ARG:NH1	1:A:719:ALA:O	2.30	0.64
1:A:477:HIS:O	1:A:477:HIS:ND1	2.31	0.62
2:B:518:VAL:HG12	2:B:518:VAL:O	2.01	0.60
1:A:1064:ALA:O	1:A:1067:TYR:N	2.33	0.60
1:A:731:ASP:O	1:A:735:GLN:NE2	2.38	0.56
1:A:990:ASP:OD1	1:A:991:PHE:N	2.39	0.56
2:B:533:TYR:OH	2:B:537:ARG:NH1	2.40	0.55
2:B:167:ASN:OD1	2:B:170:GLU:N	2.38	0.54
2:B:752:ASN:O	2:B:773:ASN:N	2.40	0.54
1:A:637:ASP:OD2	1:A:639:ASN:N	2.37	0.53
1:A:78:ALA:O	1:A:82:SER:N	2.40	0.53
1:A:178:ARG:NH2	1:A:324:PRO:O	2.37	0.53
2:B:531:ARG:NH1	2:B:819:ASP:OD2	2.44	0.51
1:A:950:ASP:OD1	1:A:950:ASP:O	2.31	0.49
1:A:252:MET:O	1:A:256:LYS:N	2.46	0.48
2:B:537:ARG:HA	2:B:867:LEU:HD11	1.95	0.48
1:A:157:LEU:O	1:A:700:ARG:NE	2.47	0.48
1:A:933:ALA:O	1:A:936:CYS:N	2.47	0.48
1:A:891:ILE:HG22	1:A:891:ILE:O	2.14	0.48
1:A:567:LEU:O	1:A:572:LYS:NZ	2.44	0.48
1:A:499:ALA:O	1:A:709:TYR:OH	2.30	0.47
2:B:554:PHE:CE1	2:B:867:LEU:HD12	2.50	0.47
2:B:754:SER:HG	2:B:773:ASN:HD21	1.61	0.47
1:A:861:ASP:CG	1:A:861:ASP:O	2.57	0.47

Continued on next page...

Continued from previous page...

Atom-1	Atom-2	Interatomic distance (Å)	Clash overlap (Å)
1:A:1033:MET:O	1:A:1034:MET:C	2.58	0.46
1:A:184:ARG:O	1:A:185:MET:C	2.57	0.46
1:A:552:ARG:NH1	1:A:581:GLU:OE2	2.48	0.46
1:A:933:ALA:O	1:A:935:TYR:N	2.49	0.46
2:B:730:TYR:CE1	2:B:732:LYS:HB2	2.51	0.46
2:B:690:HIS:N	2:B:817:ASP:OD1	2.49	0.46
1:A:364:LYS:HB3	1:A:519:LEU:HB3	1.98	0.45
1:A:289:ASN:OD1	1:A:294:ARG:NH2	2.49	0.45
1:A:1034:MET:O	1:A:1035:LEU:C	2.59	0.45
1:A:1012:VAL:O	1:A:1013:CYS:C	2.59	0.45
2:B:803:GLN:NE2	2:B:831:GLU:OE1	2.50	0.45
1:A:933:ALA:O	1:A:934:GLY:C	2.60	0.45
2:B:514:THR:HG22	2:B:515:LEU:N	2.32	0.44
1:A:694:PHE:O	1:A:698:PHE:CD2	2.70	0.44
2:B:730:TYR:CD1	2:B:799:VAL:HG12	2.53	0.44
1:A:994:VAL:HG12	1:A:994:VAL:O	2.18	0.44
2:B:732:LYS:CG	2:B:733:GLY:N	2.80	0.43
1:A:387:ILE:HD12	1:A:468:LEU:HD11	2.01	0.43
1:A:983:VAL:HG23	1:A:1078:LYS:HE2	2.00	0.43
1:A:1084:PHE:O	1:A:1085:ASN:C	2.60	0.43
1:A:1073:GLU:O	1:A:1076:ARG:N	2.51	0.43
1:A:237:ALA:O	1:A:288:LYS:HG2	2.19	0.43
1:A:854:ILE:O	1:A:857:THR:N	2.52	0.43
1:A:66:ASN:OD1	1:A:69:GLN:N	2.38	0.43
1:A:989:PRO:HD2	1:A:1080:TRP:CD1	2.54	0.43
1:A:1017:TYR:CD2	1:A:1068:PHE:HB2	2.54	0.43
1:A:616:VAL:HG23	1:A:617:TRP:N	2.33	0.42
1:A:1013:CYS:SG	1:A:1068:PHE:CE2	3.12	0.42
1:A:1014:VAL:HG12	1:A:1015:LYS:N	2.33	0.42
2:B:167:ASN:ND2	2:B:294:ASN:OD1	2.52	0.42
1:A:115:VAL:O	1:A:118:THR:OG1	2.36	0.42
1:A:880:GLU:O	3:A:1201:ATP:N6	2.53	0.42
2:B:517:VAL:HG11	2:B:554:PHE:CE2	2.54	0.42
1:A:747:ILE:HG22	1:A:748:ASP:N	2.33	0.42
1:A:795:ALA:O	1:A:816:LYS:HG2	2.19	0.42
1:A:161:ASP:OD1	1:A:163:THR:OG1	2.33	0.42
1:A:243:THR:C	1:A:245:LEU:N	2.77	0.42
1:A:617:TRP:CD1	1:A:617:TRP:O	2.73	0.42
1:A:1011:ASP:OD1	1:A:1011:ASP:C	2.62	0.42
1:A:182:THR:HB	1:A:183:PRO:HD3	2.01	0.42
1:A:1073:GLU:O	1:A:1074:VAL:C	2.62	0.42

Continued on next page...

Continued from previous page...

Atom-1	Atom-2	Interatomic distance (Å)	Clash overlap (Å)
2:B:731:SER:HB3	2:B:741:TRP:CD2	2.54	0.42
1:A:209:GLU:HB3	1:A:859:SER:HB3	2.02	0.42
1:A:383:VAL:HG12	1:A:384:GLU:N	2.35	0.42
1:A:844:ILE:O	1:A:848:LEU:HG	2.20	0.42
1:A:869:CYS:SG	1:A:870:ILE:N	2.92	0.42
1:A:749:ILE:HG23	1:A:763:VAL:HG13	2.03	0.41
1:A:815:PHE:CD1	1:A:815:PHE:N	2.89	0.41
1:A:315:LEU:O	1:A:727:ALA:HB2	2.21	0.41
1:A:570:GLU:OE1	1:A:570:GLU:N	2.43	0.41
2:B:529:VAL:HG12	2:B:530:ALA:N	2.34	0.41
1:A:1014:VAL:C	1:A:1016:ALA:N	2.79	0.41
2:B:676:LEU:HD13	2:B:830:CYS:HB2	2.02	0.41
2:B:728:ILE:HB	2:B:744:MET:O	2.21	0.41
1:A:245:LEU:O	1:A:246:GLN:C	2.64	0.41
1:A:467:LEU:O	1:A:476:ARG:NE	2.39	0.41
1:A:1059:LYS:HB3	1:A:1063:ASP:CB	2.51	0.41
1:A:844:ILE:O	1:A:844:ILE:HG22	2.20	0.40
2:B:518:VAL:O	2:B:518:VAL:CG1	2.68	0.40
1:A:939:THR:HB	1:A:945:GLY:HA2	2.02	0.40
1:A:812:TRP:CD1	1:A:812:TRP:O	2.75	0.40
2:B:208:HIS:O	2:B:272:THR:OG1	2.36	0.40
2:B:677:THR:O	2:B:828:ILE:HG22	2.22	0.40
1:A:344:LYS:O	2:B:110:HIS:NE2	2.54	0.40
1:A:396:GLN:O	1:A:397:ARG:HG2	2.21	0.40
1:A:1055:LEU:C	1:A:1056:THR:HG22	2.47	0.40

There are no symmetry-related clashes.

5.3 Torsion angles [i](#)

5.3.1 Protein backbone [i](#)

In the following table, the Percentiles column shows the percent Ramachandran outliers of the chain as a percentile score with respect to all PDB entries followed by that with respect to all EM entries.

The Analysed column shows the number of residues for which the backbone conformation was analysed, and the total number of residues.

Mol	Chain	Analysed	Favoured	Allowed	Outliers	Percentiles
1	A	966/1108 (87%)	890 (92%)	72 (8%)	4 (0%)	30 60

Continued on next page...

Continued from previous page...

Mol	Chain	Analysed	Favoured	Allowed	Outliers	Percentiles	
2	B	479/890 (54%)	459 (96%)	20 (4%)	0	100	100
All	All	1445/1998 (72%)	1349 (93%)	92 (6%)	4 (0%)	37	66

All (4) Ramachandran outliers are listed below:

Mol	Chain	Res	Type
1	A	934	GLY
1	A	1034	MET
1	A	1015	LYS
1	A	183	PRO

5.3.2 Protein sidechains [i](#)

In the following table, the Percentiles column shows the percent sidechain outliers of the chain as a percentile score with respect to all PDB entries followed by that with respect to all EM entries.

The Analysed column shows the number of residues for which the sidechain conformation was analysed, and the total number of residues.

Mol	Chain	Analysed	Rotameric	Outliers	Percentiles	
1	A	889/993 (90%)	845 (95%)	44 (5%)	22	51
2	B	437/770 (57%)	417 (95%)	20 (5%)	24	53
All	All	1326/1763 (75%)	1262 (95%)	64 (5%)	24	52

All (64) residues with a non-rotameric sidechain are listed below:

Mol	Chain	Res	Type
1	A	185	MET
1	A	191	ARG
1	A	236	SER
1	A	249	PHE
1	A	287	ILE
1	A	308	ASP
1	A	326	VAL
1	A	330	THR
1	A	346	HIS
1	A	435	CYS
1	A	467	LEU
1	A	469	ILE

Continued on next page...

Continued from previous page...

Mol	Chain	Res	Type
1	A	633	CYS
1	A	647	LYS
1	A	660	LEU
1	A	682	LEU
1	A	747	ILE
1	A	774	LEU
1	A	796	LEU
1	A	842	MET
1	A	844	ILE
1	A	846	GLN
1	A	847	ILE
1	A	857	THR
1	A	862	LEU
1	A	870	ILE
1	A	872	THR
1	A	878	MET
1	A	887	THR
1	A	993	PHE
1	A	1001	LYS
1	A	1003	SER
1	A	1014	VAL
1	A	1034	MET
1	A	1036	MET
1	A	1048	ILE
1	A	1051	ILE
1	A	1055	LEU
1	A	1057	VAL
1	A	1062	GLU
1	A	1082	VAL
1	A	1085	ASN
1	A	1087	PHE
1	A	1089	HIS
2	B	20	CYS
2	B	21	LEU
2	B	22	HIS
2	B	84	LEU
2	B	159	SER
2	B	166	LEU
2	B	215	HIS
2	B	239	LEU
2	B	513	SER
2	B	516	ARG

Continued on next page...

Continued from previous page...

Mol	Chain	Res	Type
2	B	518	VAL
2	B	529	VAL
2	B	536	LEU
2	B	611	MET
2	B	620	VAL
2	B	694	LEU
2	B	730	TYR
2	B	739	SER
2	B	773	ASN
2	B	809	SER

Sometimes sidechains can be flipped to improve hydrogen bonding and reduce clashes. All (9) such sidechains are listed below:

Mol	Chain	Res	Type
1	A	151	GLN
1	A	217	ASN
1	A	265	GLN
1	A	391	GLN
1	A	522	ASN
1	A	634	ASN
1	A	846	GLN
2	B	70	GLN
2	B	743	ASN

5.3.3 RNA [i](#)

There are no RNA molecules in this entry.

5.4 Non-standard residues in protein, DNA, RNA chains [i](#)

There are no non-standard protein/DNA/RNA residues in this entry.

5.5 Carbohydrates [i](#)

There are no oligosaccharides in this entry.

5.6 Ligand geometry [i](#)

1 ligand is modelled in this entry.

In the following table, the Counts columns list the number of bonds (or angles) for which Mogul statistics could be retrieved, the number of bonds (or angles) that are observed in the model and the number of bonds (or angles) that are defined in the Chemical Component Dictionary. The Link column lists molecule types, if any, to which the group is linked. The Z score for a bond length (or angle) is the number of standard deviations the observed value is removed from the expected value. A bond length (or angle) with $|Z| > 2$ is considered an outlier worth inspection. RMSZ is the root-mean-square of all Z scores of the bond lengths (or angles).

Mol	Type	Chain	Res	Link	Bond lengths			Bond angles		
					Counts	RMSZ	$\# Z > 2$	Counts	RMSZ	$\# Z > 2$
3	ATP	A	1201	-	32,33,33	0.36	0	48,52,52	0.70	0

In the following table, the Chirals column lists the number of chiral outliers, the number of chiral centers analysed, the number of these observed in the model and the number defined in the Chemical Component Dictionary. Similar counts are reported in the Torsion and Rings columns. '-' means no outliers of that kind were identified.

Mol	Type	Chain	Res	Link	Chirals	Torsions	Rings
3	ATP	A	1201	-	-	5/22/38/38	0/3/3/3

There are no bond length outliers.

There are no bond angle outliers.

There are no chirality outliers.

All (5) torsion outliers are listed below:

Mol	Chain	Res	Type	Atoms
3	A	1201	ATP	PB-O3A-PA-O1A
3	A	1201	ATP	PB-O3A-PA-O2A
3	A	1201	ATP	PB-O3B-PG-O2G
3	A	1201	ATP	PG-O3B-PB-O1B
3	A	1201	ATP	PG-O3B-PB-O2B

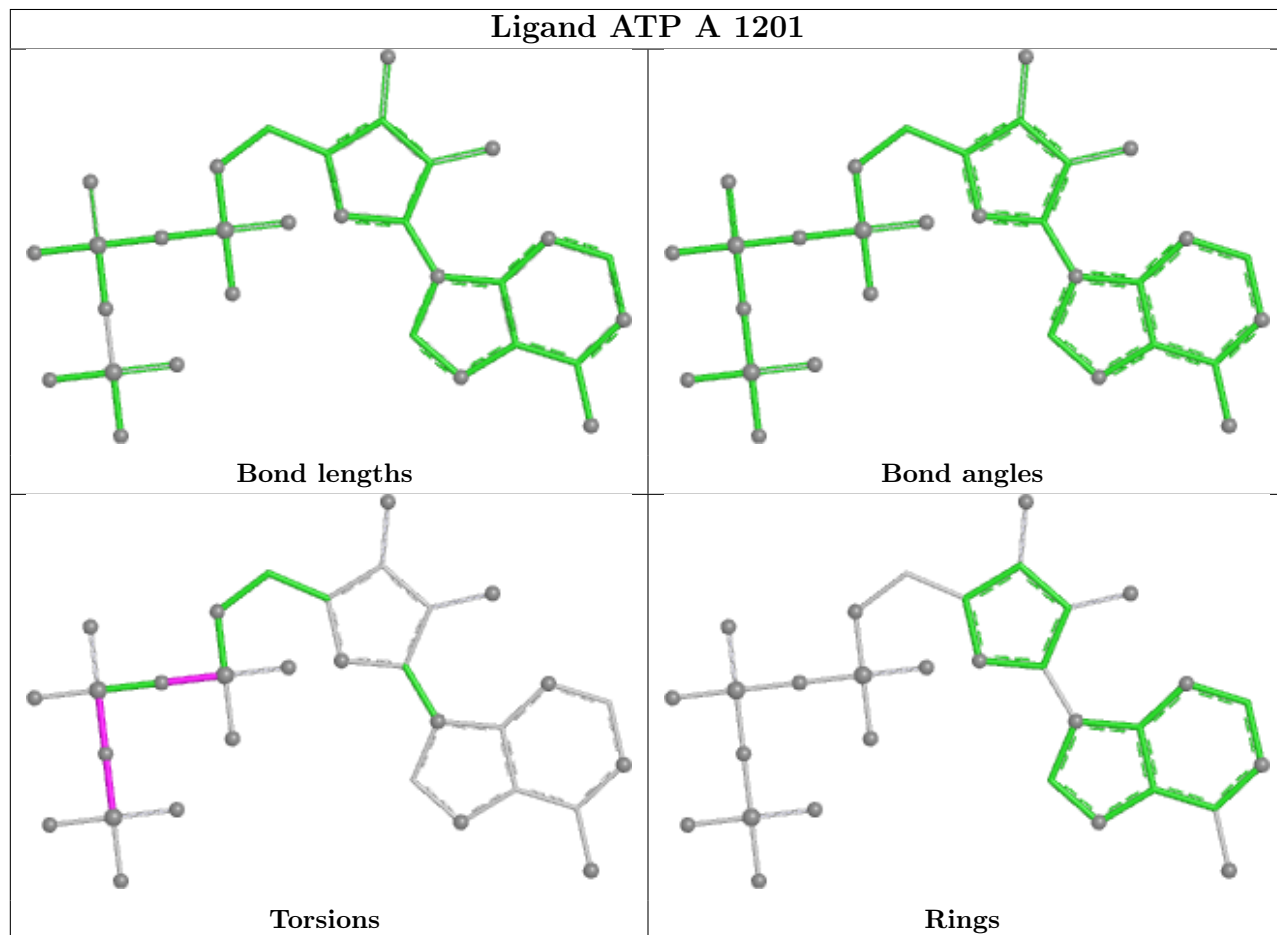
There are no ring outliers.

1 monomer is involved in 1 short contact:

Mol	Chain	Res	Type	Clashes	Symm-Clashes
3	A	1201	ATP	1	0

The following is a two-dimensional graphical depiction of Mogul quality analysis of bond lengths, bond angles, torsion angles, and ring geometry for all instances of the Ligand of Interest. In addition, ligands with molecular weight > 250 and outliers as shown on the validation Tables will also be included. For torsion angles, if less than 5% of the Mogul distribution of torsion angles is within 10 degrees of the torsion angle in question, then that torsion angle is considered an outlier.

Any bond that is central to one or more torsion angles identified as an outlier by Mogul will be highlighted in the graph. For rings, the root-mean-square deviation (RMSD) between the ring in question and similar rings identified by Mogul is calculated over all ring torsion angles. If the average RMSD is greater than 60 degrees and the minimal RMSD between the ring in question and any Mogul-identified rings is also greater than 60 degrees, then that ring is considered an outlier. The outliers are highlighted in purple. The color gray indicates Mogul did not find sufficient equivalents in the CSD to analyse the geometry.



5.7 Other polymers [\(i\)](#)

There are no such residues in this entry.

5.8 Polymer linkage issues [\(i\)](#)

There are no chain breaks in this entry.

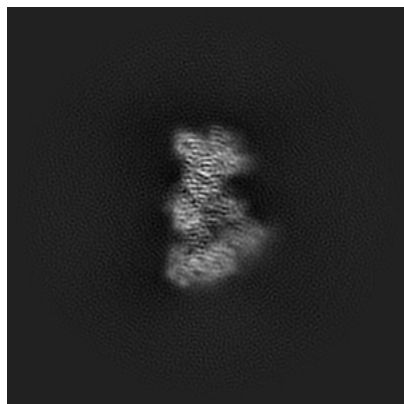
6 Map visualisation [i](#)

This section contains visualisations of the EMDB entry EMD-40651. These allow visual inspection of the internal detail of the map and identification of artifacts.

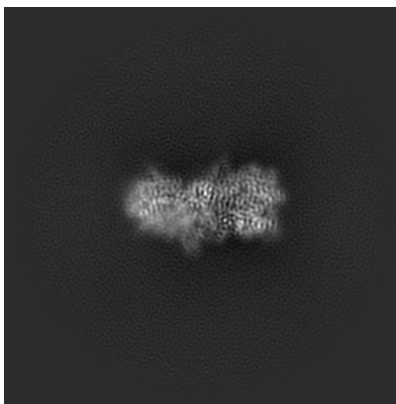
Images derived from a raw map, generated by summing the deposited half-maps, are presented below the corresponding image components of the primary map to allow further visual inspection and comparison with those of the primary map.

6.1 Orthogonal projections [i](#)

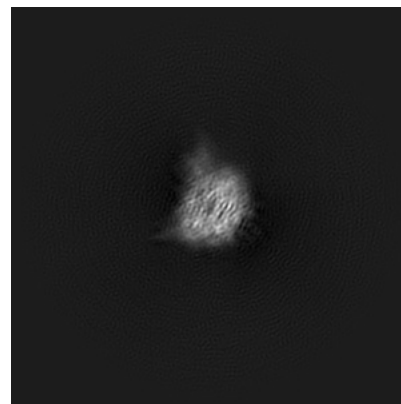
6.1.1 Primary map



X

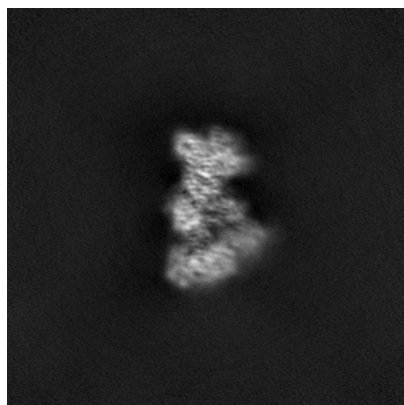


Y

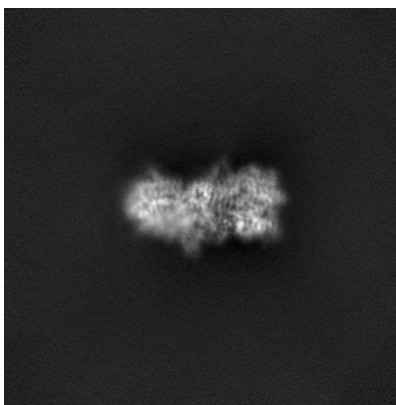


Z

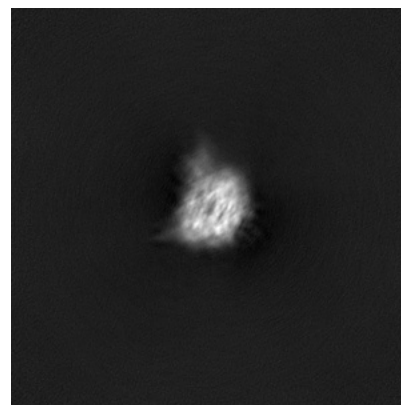
6.1.2 Raw map



X



Y

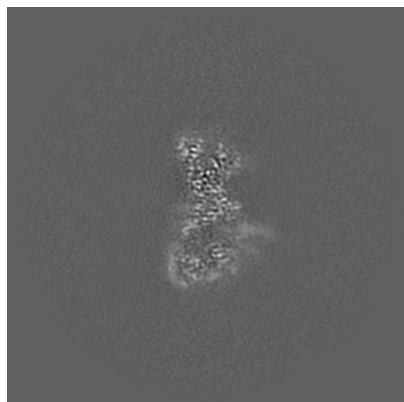


Z

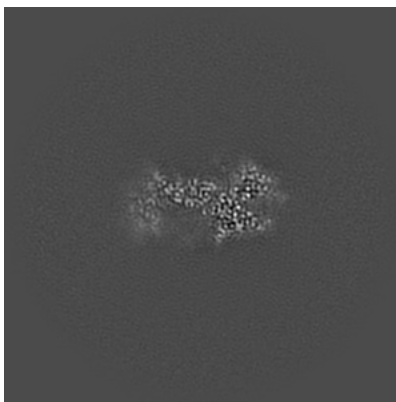
The images above show the map projected in three orthogonal directions.

6.2 Central slices [i](#)

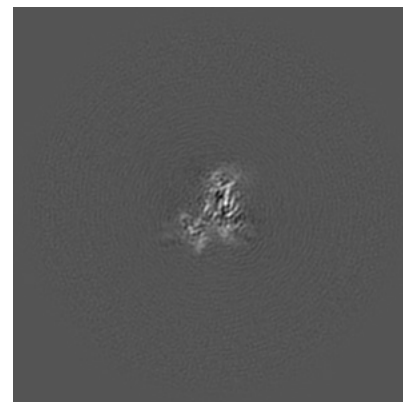
6.2.1 Primary map



X Index: 160

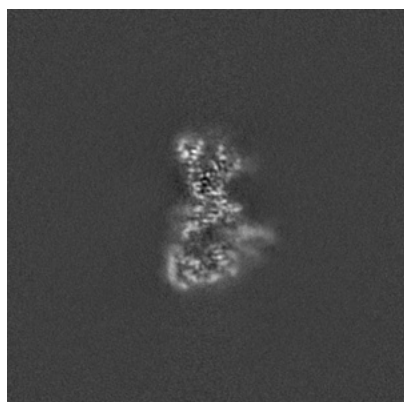


Y Index: 160

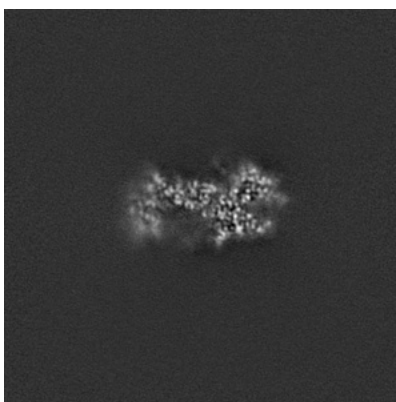


Z Index: 160

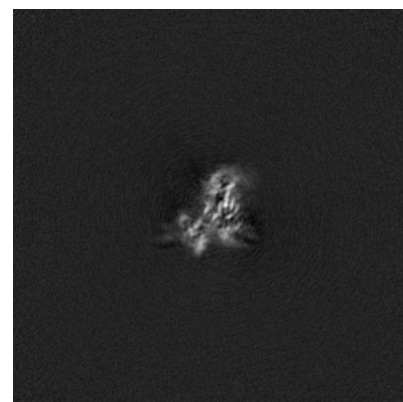
6.2.2 Raw map



X Index: 160



Y Index: 160

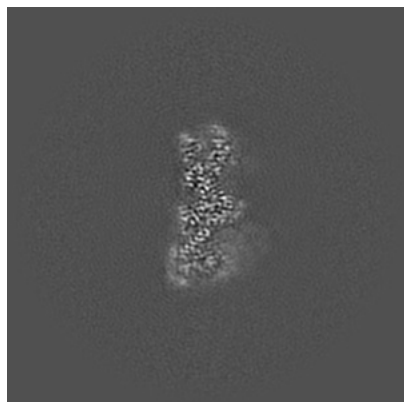


Z Index: 160

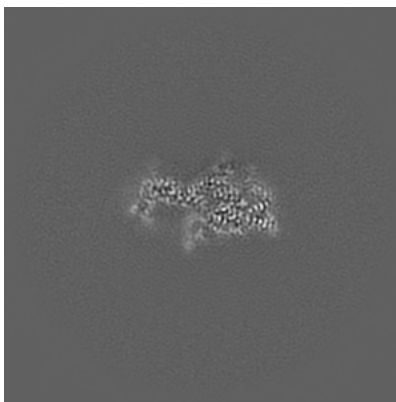
The images above show central slices of the map in three orthogonal directions.

6.3 Largest variance slices [i](#)

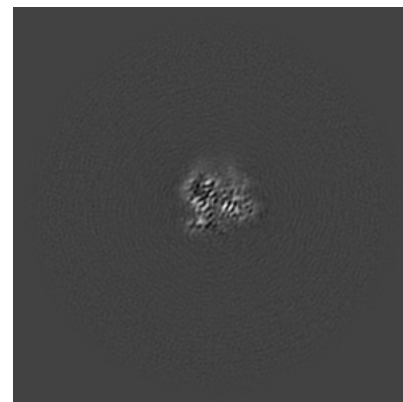
6.3.1 Primary map



X Index: 165

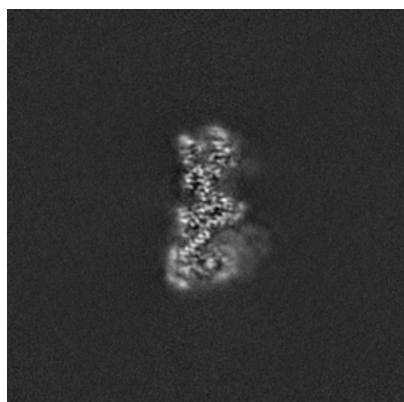


Y Index: 149

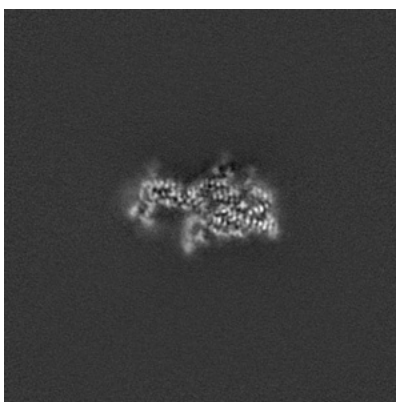


Z Index: 195

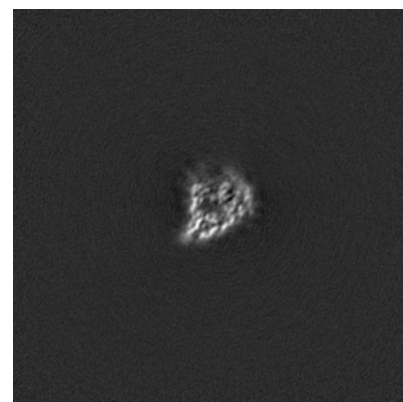
6.3.2 Raw map



X Index: 165



Y Index: 149

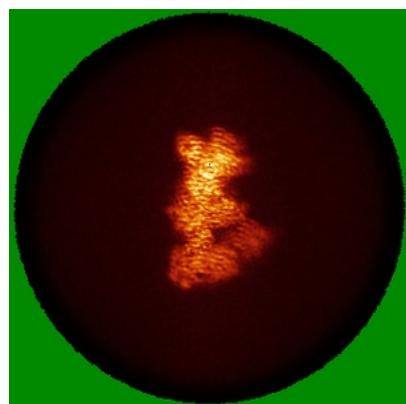


Z Index: 204

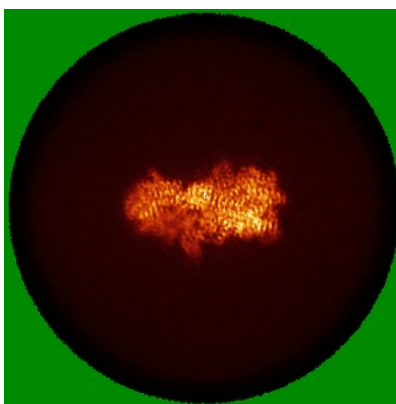
The images above show the largest variance slices of the map in three orthogonal directions.

6.4 Orthogonal standard-deviation projections (False-color) [i](#)

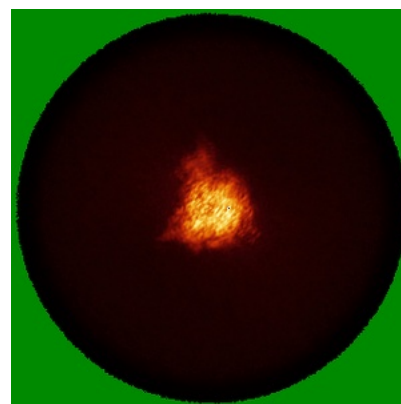
6.4.1 Primary map



X

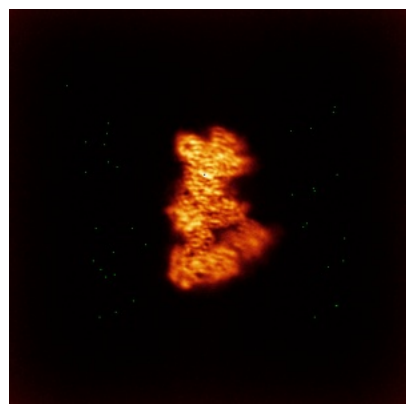


Y

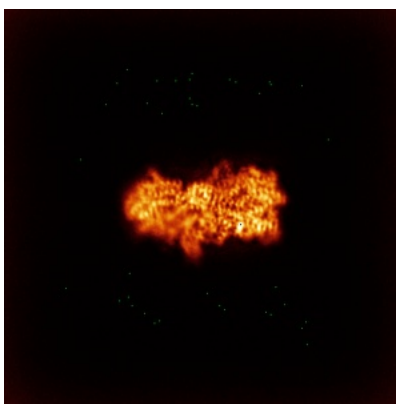


Z

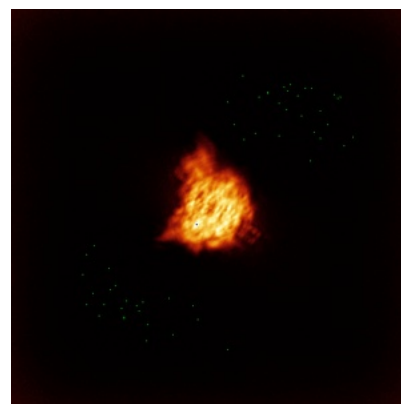
6.4.2 Raw map



X



Y



Z

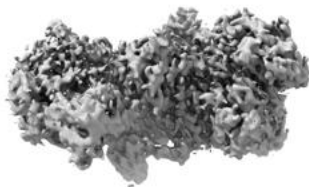
The images above show the map standard deviation projections with false color in three orthogonal directions. Minimum values are shown in green, max in blue, and dark to light orange shades represent small to large values respectively.

6.5 Orthogonal surface views [i](#)

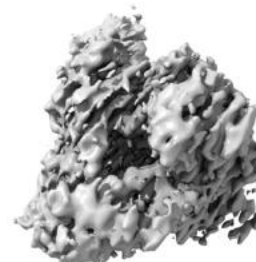
6.5.1 Primary map



X



Y



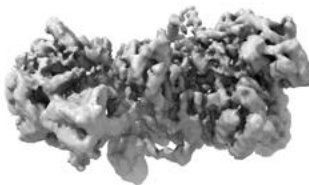
Z

The images above show the 3D surface view of the map at the recommended contour level 0.18. These images, in conjunction with the slice images, may facilitate assessment of whether an appropriate contour level has been provided.

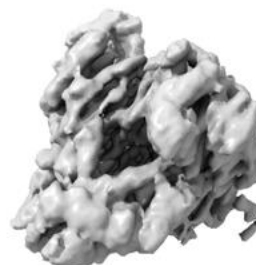
6.5.2 Raw map



X



Y



Z

These images show the 3D surface of the raw map. The raw map's contour level was selected so that its surface encloses the same volume as the primary map does at its recommended contour level.

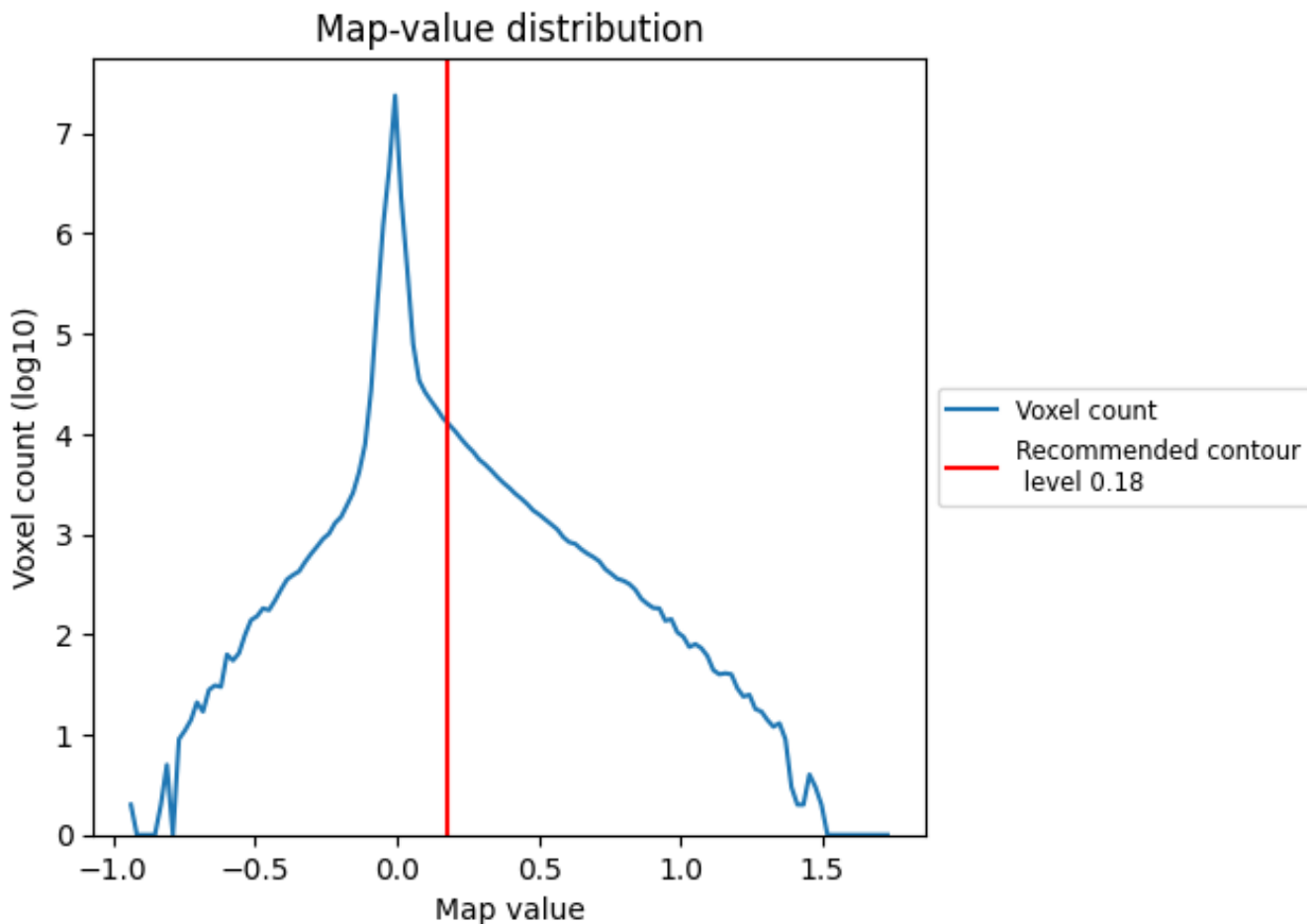
6.6 Mask visualisation [i](#)

This section was not generated. No masks/segmentation were deposited.

7 Map analysis [i](#)

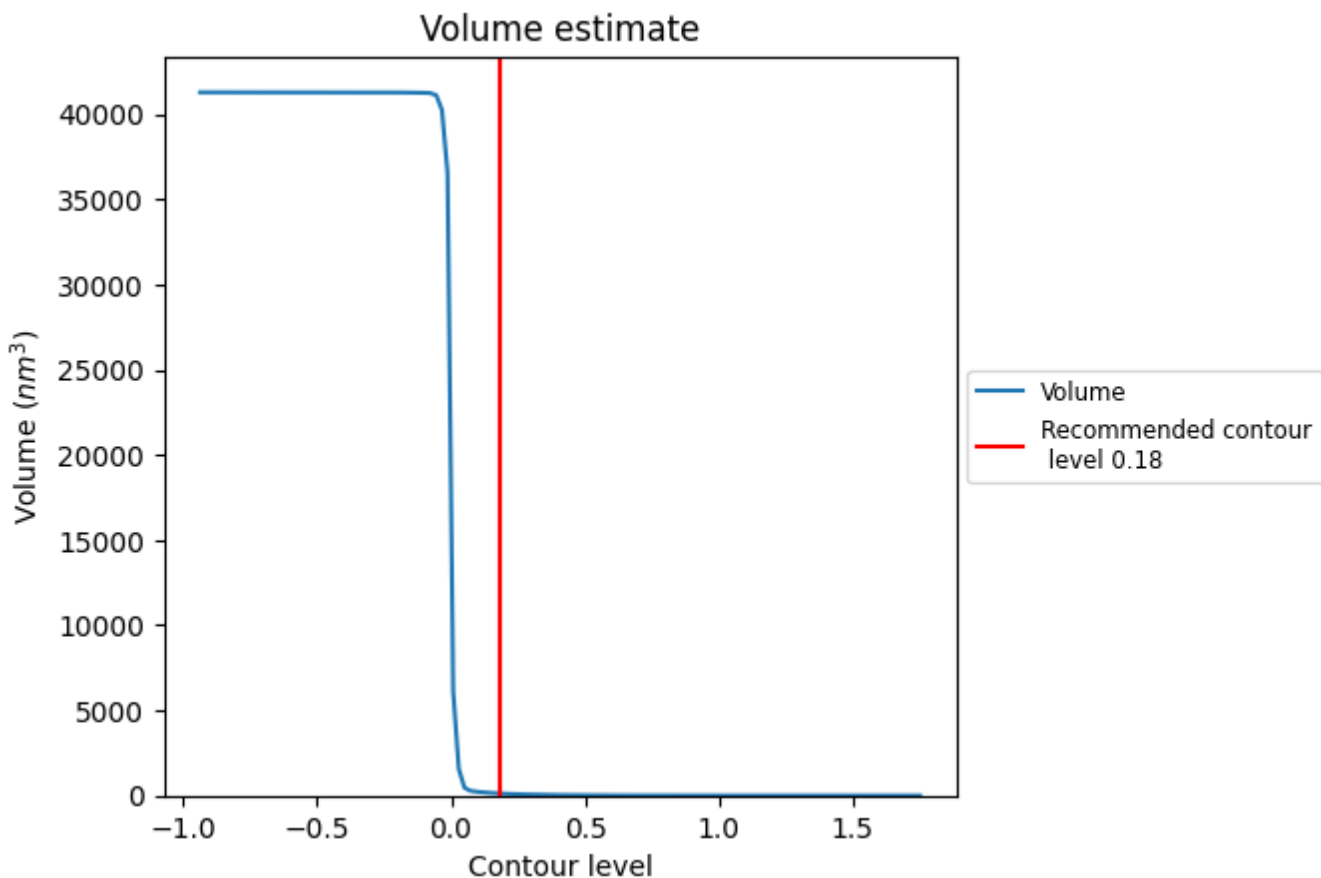
This section contains the results of statistical analysis of the map.

7.1 Map-value distribution [i](#)



The map-value distribution is plotted in 128 intervals along the x-axis. The y-axis is logarithmic. A spike in this graph at zero usually indicates that the volume has been masked.

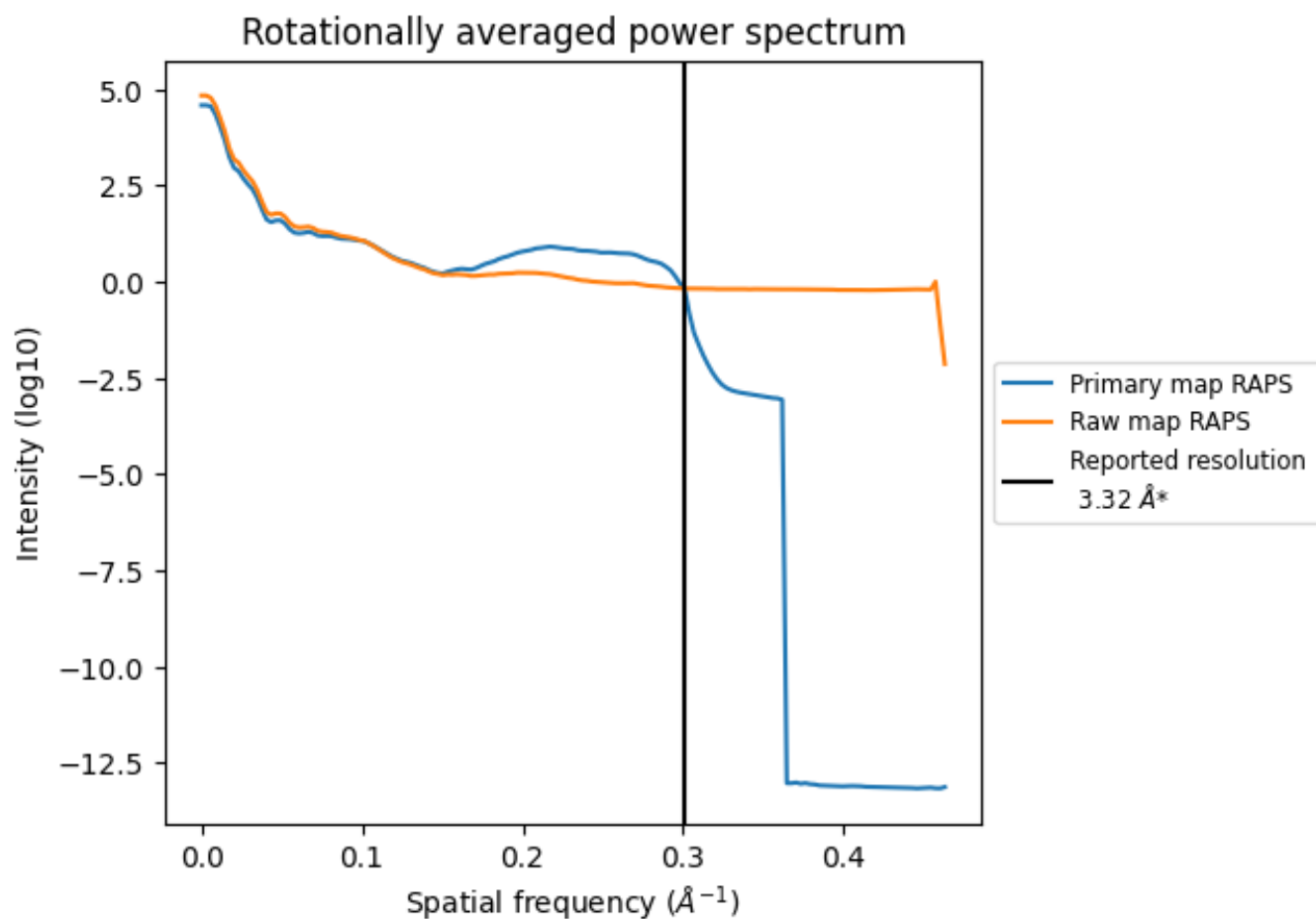
7.2 Volume estimate [i](#)



The volume at the recommended contour level is 122 nm³; this corresponds to an approximate mass of 111 kDa.

The volume estimate graph shows how the enclosed volume varies with the contour level. The recommended contour level is shown as a vertical line and the intersection between the line and the curve gives the volume of the enclosed surface at the given level.

7.3 Rotationally averaged power spectrum [i](#)

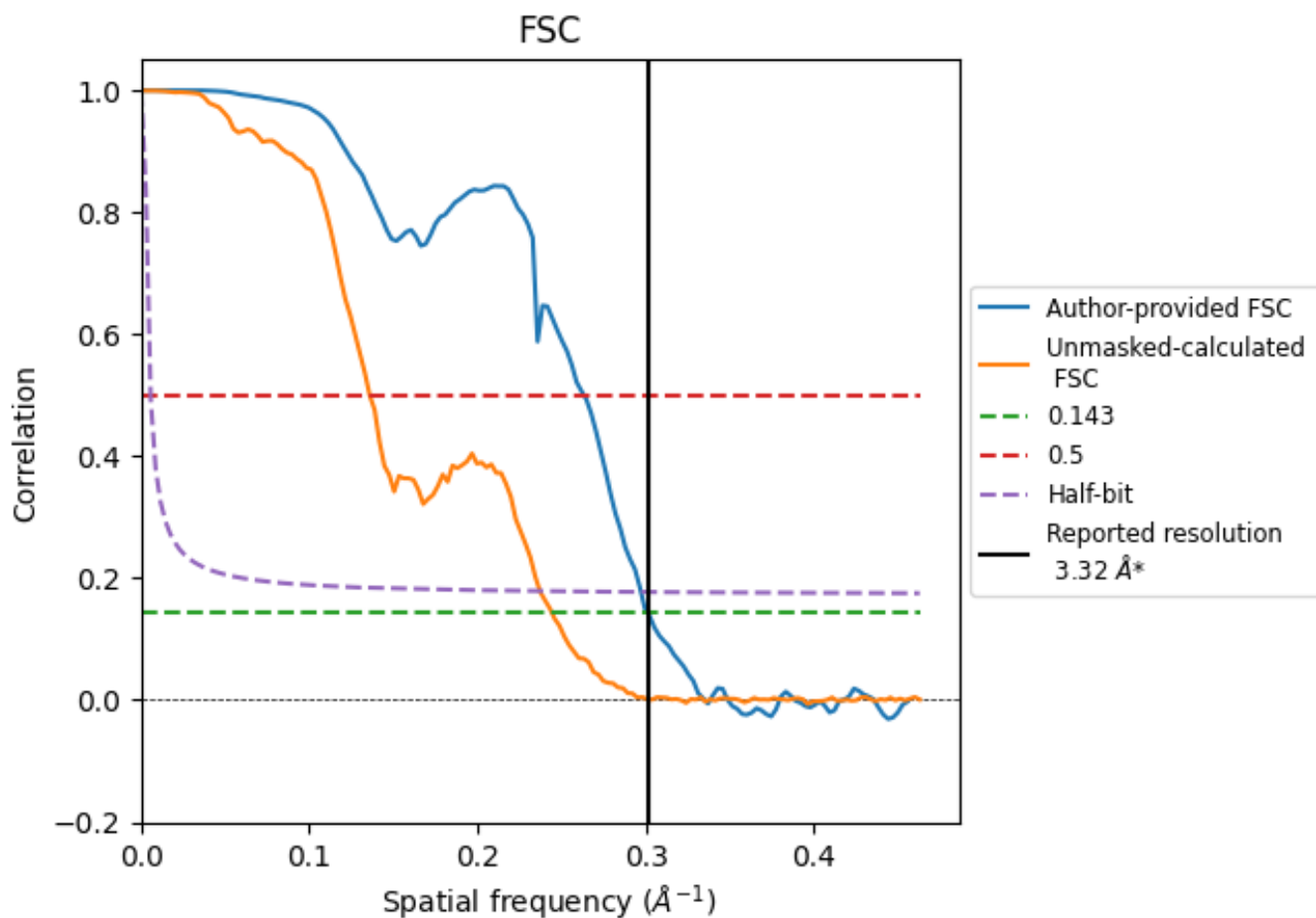


*Reported resolution corresponds to spatial frequency of 0.301 Å⁻¹

8 Fourier-Shell correlation [i](#)

Fourier-Shell Correlation (FSC) is the most commonly used method to estimate the resolution of single-particle and subtomogram-averaged maps. The shape of the curve depends on the imposed symmetry, mask and whether or not the two 3D reconstructions used were processed from a common reference. The reported resolution is shown as a black line. A curve is displayed for the half-bit criterion in addition to lines showing the 0.143 gold standard cut-off and 0.5 cut-off.

8.1 FSC [i](#)



*Reported resolution corresponds to spatial frequency of 0.301\AA^{-1}

8.2 Resolution estimates [i](#)

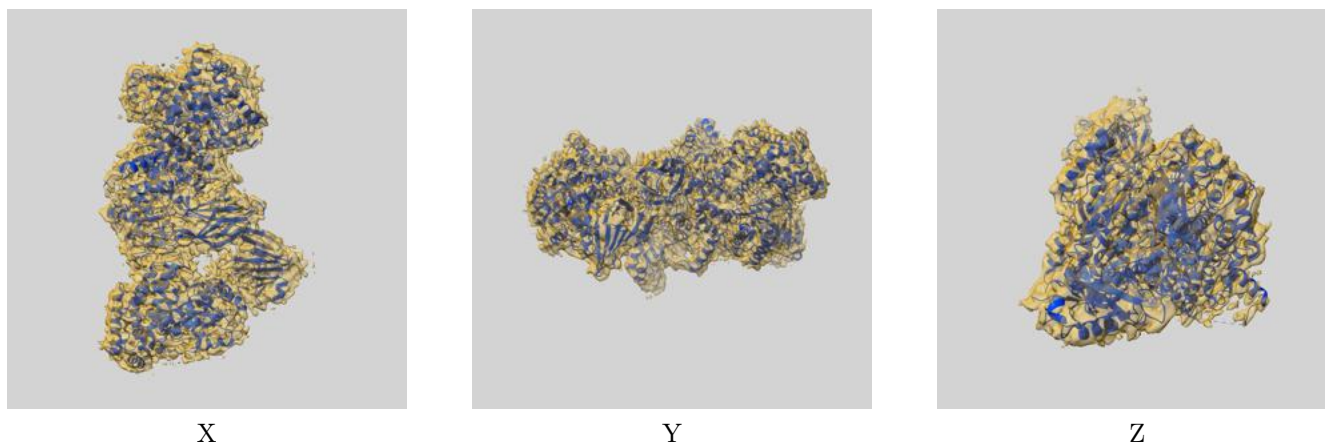
Resolution estimate (Å)	Estimation criterion (FSC cut-off)		
	0.143	0.5	Half-bit
Reported by author	3.32	-	-
Author-provided FSC curve	3.32	3.80	3.36
Unmasked-calculated*	4.09	7.35	4.22

*Resolution estimate based on FSC curve calculated by comparison of deposited half-maps. The value from deposited half-maps intersecting FSC 0.143 CUT-OFF 4.09 differs from the reported value 3.32 by more than 10 %

9 Map-model fit [i](#)

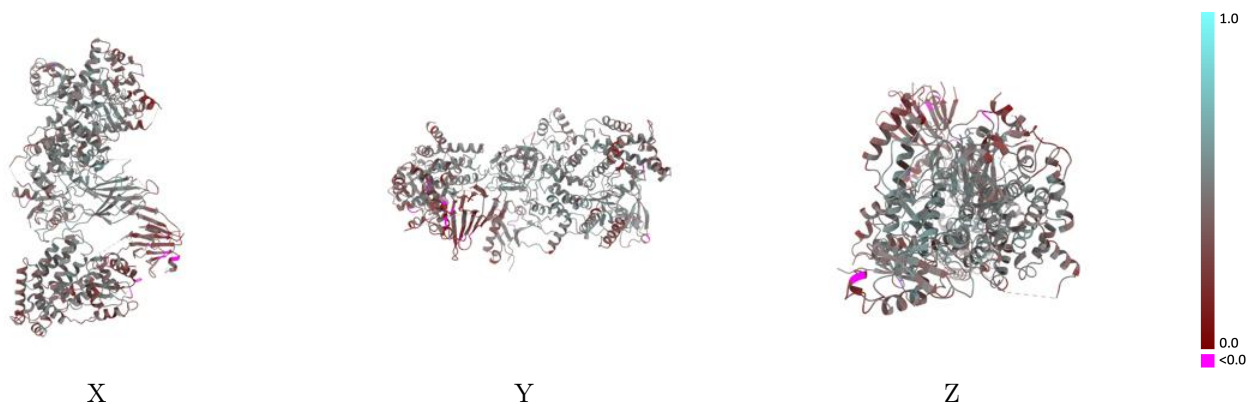
This section contains information regarding the fit between EMDB map EMD-40651 and PDB model 8SOA. Per-residue inclusion information can be found in section 3 on page 5.

9.1 Map-model overlay [i](#)



The images above show the 3D surface view of the map at the recommended contour level 0.18 at 50% transparency in yellow overlaid with a ribbon representation of the model coloured in blue. These images allow for the visual assessment of the quality of fit between the atomic model and the map.

9.2 Q-score mapped to coordinate model [i](#)

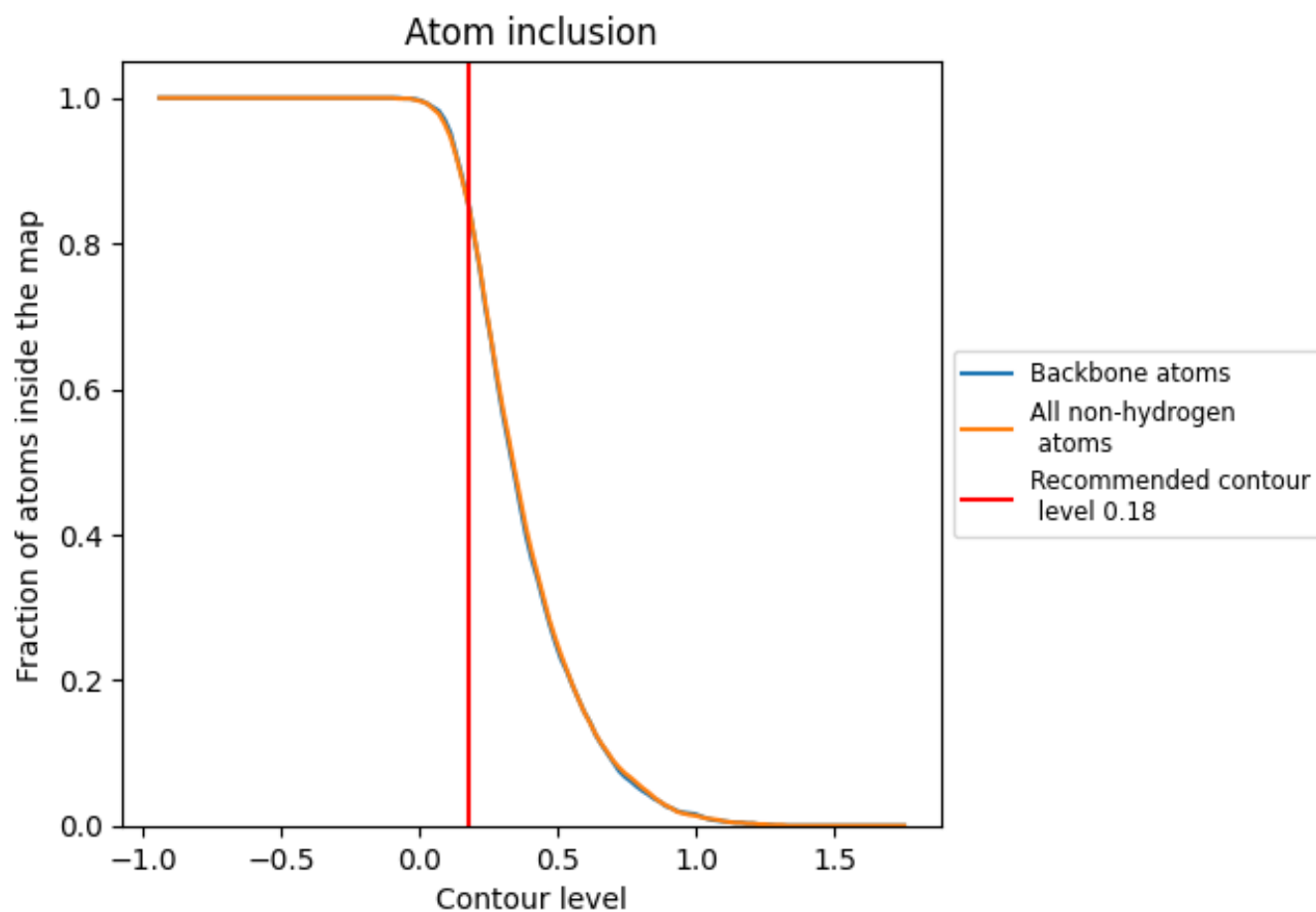


The images above show the model with each residue coloured according to its Q-score. This shows their resolvability in the map with higher Q-score values reflecting better resolvability. Please note: Q-score is calculating the resolvability of atoms, and thus high values are only expected at resolutions at which atoms can be resolved. Low Q-score values may therefore be expected for many entries.

9.3 Atom inclusion mapped to coordinate model [i](#)

This section was not generated.



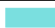



9.4 Atom inclusion [i](#)



At the recommended contour level, 85% of all backbone atoms, 85% of all non-hydrogen atoms, are inside the map.

9.5 Map-model fit summary

The table lists the average atom inclusion at the recommended contour level (0.18) and Q-score for the entire model and for each chain.

Chain	Atom inclusion	Q-score
All	 0.8490	 0.4250
A	 0.8760	 0.4550
B	 0.8190	 0.3630

