



Full wwPDB X-ray Structure Validation Report ⓘ

Mar 5, 2026 – 04:18 PM UTC

PDB ID : 5SYS / pdb_00005sys
Title : c-Src V281C bound to N-[3-({6-[(1E)-2-cyano-3-(methylamino)-3-oxoprop-1-en-1-yl]-7-(2-methoxyethyl)-7H-pyrrolo[2,3-d]pyrimidin-5-yl}ethynyl)-4-methylphenyl]-3-(trifluoromethyl)benzamide inhibitor
Authors : Dieter, E.M.; Merritt, E.A.; Maly, D.J.
Deposited on : 2016-08-11
Resolution : 2.80 Å(reported)

This is a Full wwPDB X-ray Structure Validation Report for a publicly released PDB entry.

We welcome your comments at validation@mail.wwpdb.org

A user guide is available at

<https://www.wwpdb.org/validation/2017/XrayValidationReportHelp>

with specific help available everywhere you see the ⓘ symbol.

The types of validation reports are described at

<http://www.wwpdb.org/validation/2017/FAQs#types>.

The following versions of software and data (see [references ⓘ](#)) were used in the production of this report:

MolProbity : 4-5-2 with Phenix2.0
Mogul : 2022.3.0, CSD as543be (2022)
Xtriage (Phenix) : 2.0
EDS : 3.0
Buster-report : wwPDB partial adaption of 1.1.7 (2018)
Percentile statistics : 20250101.v01 (using entries in the PDB archive January 1st 2025)
CCP4 : 9.0.010 (Gargrove)
Density-Fitness : 1.0.12
Ideal geometry (proteins) : Engh & Huber (2001)
Ideal geometry (DNA, RNA) : Parkinson et al. (1996)
Validation Pipeline (wwPDB-VP) : 2.49

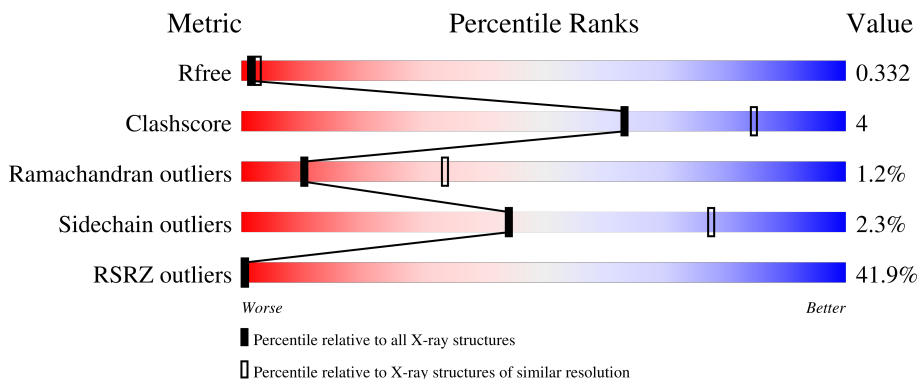
1 Overall quality at a glance

The following experimental techniques were used to determine the structure:

X-RAY DIFFRACTION

The reported resolution of this entry is 2.80 Å.

Percentile scores (ranging between 0-100) for global validation metrics of the entry are shown in the following graphic. The table shows the number of entries on which the scores are based.



Metric	Whole archive (#Entries)	Similar resolution (#Entries, resolution range(Å))
R_{free}	180053	3866 (2.80-2.80)
Clashscore	190562	4276 (2.80-2.80)
Ramachandran outliers	187476	4196 (2.80-2.80)
Sidechain outliers	187428	4198 (2.80-2.80)
RSRZ outliers	180081	3869 (2.80-2.80)

The table below summarises the geometric issues observed across the polymeric chains and their fit to the electron density. The red, orange, yellow and green segments of the lower bar indicate the fraction of residues that contain outliers for ≥ 3 , 2, 1 and 0 types of geometric quality criteria respectively. A grey segment represents the fraction of residues that are not modelled. The numeric value for each fraction is indicated below the corresponding segment, with a dot representing fractions $\leq 5\%$. The upper red bar (where present) indicates the fraction of residues that have poor fit to the electron density. The numeric value is given above the bar.

Mol	Chain	Length	Quality of chain
1	A	286	
1	B	286	

2 Entry composition

There are 3 unique types of molecules in this entry. The entry contains 4297 atoms, of which 0 are hydrogens and 0 are deuteriums.

In the tables below, the ZeroOcc column contains the number of atoms modelled with zero occupancy, the AltConf column contains the number of residues with at least one atom in alternate conformation and the Trace column contains the number of residues modelled with at most 2 atoms.

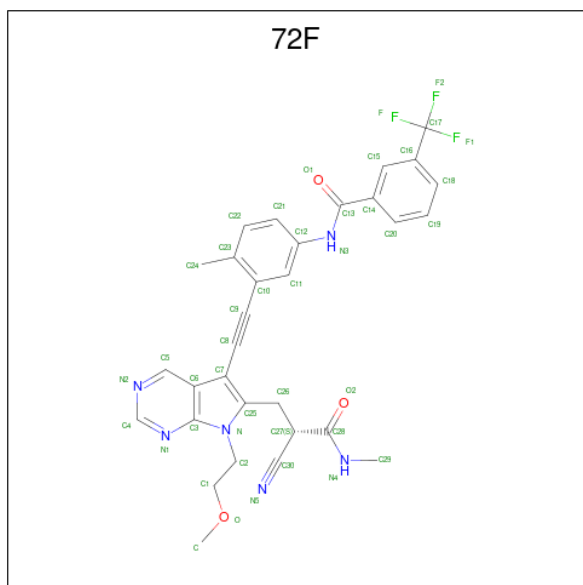
- Molecule 1 is a protein called Proto-oncogene tyrosine-protein kinase Src.

Mol	Chain	Residues	Atoms					ZeroOcc	AltConf	Trace
			Total	C	N	O	S			
1	A	258	2072	1328	346	380	18	0	1	0
1	B	258	2072	1328	346	380	18	0	1	0

There are 8 discrepancies between the modelled and reference sequences:

Chain	Residue	Modelled	Actual	Comment	Reference
A	248	GLY	-	expression tag	UNP P00523
A	249	HIS	-	expression tag	UNP P00523
A	250	MET	-	expression tag	UNP P00523
A	281	CYS	VAL	engineered mutation	UNP P00523
B	248	GLY	-	expression tag	UNP P00523
B	249	HIS	-	expression tag	UNP P00523
B	250	MET	-	expression tag	UNP P00523
B	281	CYS	VAL	engineered mutation	UNP P00523

- Molecule 2 is N-[3-({6-[(2S)-2-cyano-3-(methylamino)-3-oxopropyl]-7-(2-methoxyethyl)-7H-pyrrolo[2,3-d]pyrimidin-5-yl}ethynyl)-4-methylphenyl]-3-(trifluoromethyl)benzamide (CCD ID: 72F) (formula: C₃₁H₂₇F₃N₆O₃).



Mol	Chain	Residues	Atoms				ZeroOcc	AltConf	
			Total	C	F	N			O
2	A	1	Total	C	F	N	O	0	0
			43	31	3	6	3		
2	B	1	Total	C	F	N	O	0	0
			43	31	3	6	3		

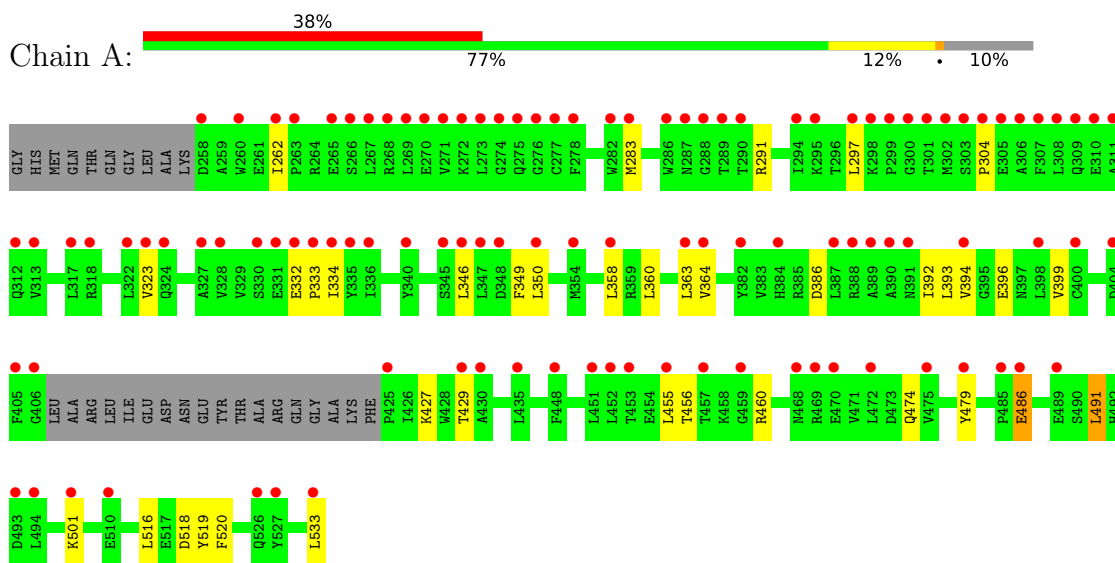
- Molecule 3 is water.

Mol	Chain	Residues	Atoms		ZeroOcc	AltConf
			Total	O		
3	A	38	Total	O	0	0
			38	38		
3	B	29	Total	O	0	0
			29	29		

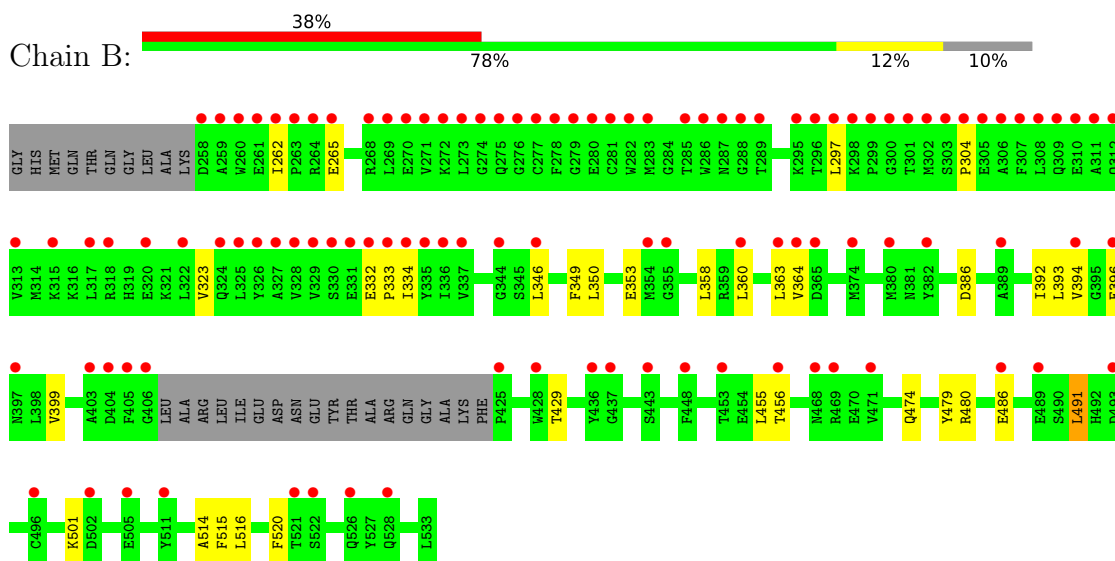
3 Residue-property plots i

These plots are drawn for all protein, RNA, DNA and oligosaccharide chains in the entry. The first graphic for a chain summarises the proportions of the various outlier classes displayed in the second graphic. The second graphic shows the sequence view annotated by issues in geometry and electron density. Residues are color-coded according to the number of geometric quality criteria for which they contain at least one outlier: green = 0, yellow = 1, orange = 2 and red = 3 or more. A red dot above a residue indicates a poor fit to the electron density ($RSRZ > 2$). Stretches of 2 or more consecutive residues without any outlier are shown as a green connector. Residues present in the sample, but not in the model, are shown in grey.

- Molecule 1: Proto-oncogene tyrosine-protein kinase Src



- Molecule 1: Proto-oncogene tyrosine-protein kinase Src



4 Data and refinement statistics i

Property	Value	Source
Space group	P 1	Depositor
Cell constants a, b, c, α , β , γ	41.81Å 63.86Å 75.62Å 77.87° 90.10° 89.83°	Depositor
Resolution (Å)	73.94 – 2.80 73.94 – 2.80	Depositor EDS
% Data completeness (in resolution range)	86.5 (73.94-2.80) 86.5 (73.94-2.80)	Depositor EDS
R_{merge}	0.18	Depositor
R_{sym}	(Not available)	Depositor
$\langle I/\sigma(I) \rangle$ ¹	1.50 (at 2.81Å)	Xtrriage
Refinement program	REFMAC 5.8.0155	Depositor
R, R_{free}	0.286 , 0.334 0.289 , 0.332	Depositor DCC
R_{free} test set	951 reflections (5.06%)	wwPDB-VP
Wilson B-factor (Å ²)	47.4	Xtrriage
Anisotropy	0.242	Xtrriage
Bulk solvent k_{sol} (e/Å ³), B_{sol} (Å ²)	0.28 , 43.9	EDS
L-test for twinning ²	$\langle L \rangle = 0.50$, $\langle L^2 \rangle = 0.33$	Xtrriage
Estimated twinning fraction	0.029 for h,-k,-l	Xtrriage
F_o, F_c correlation	0.82	EDS
Total number of atoms	4297	wwPDB-VP
Average B, all atoms (Å ²)	65.0	wwPDB-VP

Xtrriage's analysis on translational NCS is as follows: *The analyses of the Patterson function reveals a significant off-origin peak that is 28.98 % of the origin peak, indicating pseudo-translational symmetry. The chance of finding a peak of this or larger height randomly in a structure without pseudo-translational symmetry is equal to 1.6770e-03. The detected translational NCS is most likely also responsible for the elevated intensity ratio.*

¹Intensities estimated from amplitudes.

²Theoretical values of $\langle |L| \rangle$, $\langle L^2 \rangle$ for acentric reflections are 0.5, 0.333 respectively for untwinned datasets, and 0.375, 0.2 for perfectly twinned datasets.

5 Model quality [i](#)

5.1 Standard geometry [i](#)

Bond lengths and bond angles in the following residue types are not validated in this section: 72F

The Z score for a bond length (or angle) is the number of standard deviations the observed value is removed from the expected value. A bond length (or angle) with $|Z| > 5$ is considered an outlier worth inspection. RMSZ is the root-mean-square of all Z scores of the bond lengths (or angles).

Mol	Chain	Bond lengths		Bond angles	
		RMSZ	# Z >5	RMSZ	# Z >5
1	A	0.73	0/2126	0.90	1/2878 (0.0%)
1	B	0.72	0/2126	0.90	1/2878 (0.0%)
All	All	0.72	0/4252	0.90	2/5756 (0.0%)

There are no bond length outliers.

All (2) bond angle outliers are listed below:

Mol	Chain	Res	Type	Atoms	Z	Observed(°)	Ideal(°)
1	B	491	LEU	N-CA-C	5.26	117.09	111.36
1	A	491	LEU	N-CA-C	5.08	116.89	111.36

There are no chirality outliers.

There are no planarity outliers.

5.2 Too-close contacts [i](#)

In the following table, the Non-H and H(model) columns list the number of non-hydrogen atoms and hydrogen atoms in the chain respectively. The H(added) column lists the number of hydrogen atoms added and optimized by MolProbity. The Clashes column lists the number of clashes within the asymmetric unit, whereas Symm-Clashes lists symmetry-related clashes.

Mol	Chain	Non-H	H(model)	H(added)	Clashes	Symm-Clashes
1	A	2072	0	2050	17	0
1	B	2072	0	2050	17	0
2	A	43	0	0	0	0
2	B	43	0	0	0	0
3	A	38	0	0	1	0
3	B	29	0	0	3	0
All	All	4297	0	4100	33	0

The all-atom clashscore is defined as the number of clashes found per 1000 atoms (including hydrogen atoms). The all-atom clashscore for this structure is 4.

All (33) close contacts within the same asymmetric unit are listed below, sorted by their clash magnitude.

Atom-1	Atom-2	Interatomic distance (Å)	Clash overlap (Å)
1:B:480:ARG:HH22	1:B:501:LYS:HE3	1.57	0.68
1:B:353:GLU:OE2	3:B:701:HOH:O	2.17	0.60
1:B:515:PHE:O	3:B:702:HOH:O	2.17	0.59
1:A:297:LEU:HD23	1:A:334:ILE:HD12	1.85	0.58
1:B:297:LEU:HD23	1:B:334:ILE:HD12	1.86	0.56
1:A:350:LEU:HD21	1:A:455:LEU:HD23	1.91	0.52
1:A:363:LEU:HD13	1:A:455:LEU:O	2.11	0.50
1:B:360:LEU:HD23	1:B:520:PHE:CZ	2.46	0.50
1:B:350:LEU:HD21	1:B:455:LEU:HD23	1.93	0.50
1:B:346:LEU:HD22	1:B:392:ILE:HG21	1.94	0.50
1:A:283:MET:HE3	1:A:291:ARG:NH1	2.27	0.49
1:B:363:LEU:HD13	1:B:455:LEU:O	2.12	0.49
1:A:360:LEU:HD23	1:A:520:PHE:CZ	2.48	0.49
1:B:364:VAL:HG13	1:B:516:LEU:HD22	1.95	0.48
1:A:346:LEU:HD22	1:A:392:ILE:HG21	1.95	0.48
1:A:364:VAL:HG13	1:A:516:LEU:HD22	1.96	0.48
1:B:349:PHE:CE2	1:B:358:LEU:HD11	2.48	0.47
1:A:349:PHE:CE2	1:A:358:LEU:HD11	2.49	0.47
1:A:486:GLU:HG3	1:A:533:LEU:HB2	1.96	0.47
1:A:427:LYS:O	3:A:701:HOH:O	2.20	0.46
1:A:394:VAL:HA	1:A:399:VAL:O	2.15	0.46
1:B:394:VAL:HA	1:B:399:VAL:O	2.16	0.46
1:B:514:ALA:N	3:B:706:HOH:O	2.48	0.45
1:B:474:GLN:HB3	1:B:479:TYR:HB3	1.98	0.45
1:B:332:GLU:HA	1:B:333:PRO:C	2.42	0.44
1:A:474:GLN:HB3	1:A:479:TYR:HB3	2.00	0.43
1:A:323:VAL:HG21	1:A:393:LEU:HD12	2.01	0.42
1:B:396:GLU:O	1:B:399:VAL:HG23	2.20	0.42
1:A:396:GLU:O	1:A:399:VAL:HG23	2.21	0.41
1:A:460:ARG:HD3	1:B:514:ALA:HB1	2.03	0.41
1:A:518:ASP:O	1:A:519:TYR:C	2.64	0.41
1:A:332:GLU:HA	1:A:333:PRO:C	2.46	0.40
1:B:323:VAL:HG21	1:B:393:LEU:HD12	2.03	0.40

There are no symmetry-related clashes.

5.3 Torsion angles [i](#)

5.3.1 Protein backbone [i](#)

In the following table, the Percentiles column shows the percent Ramachandran outliers of the chain as a percentile score with respect to all X-ray entries followed by that with respect to entries of similar resolution.

The Analysed column shows the number of residues for which the backbone conformation was analysed, and the total number of residues.

Mol	Chain	Analysed	Favoured	Allowed	Outliers	Percentiles	
1	A	255/286 (89%)	231 (91%)	21 (8%)	3 (1%)	10	34
1	B	255/286 (89%)	231 (91%)	21 (8%)	3 (1%)	10	34
All	All	510/572 (89%)	462 (91%)	42 (8%)	6 (1%)	10	34

All (6) Ramachandran outliers are listed below:

Mol	Chain	Res	Type
1	A	486	GLU
1	A	386	ASP
1	B	386	ASP
1	B	486	GLU
1	A	304	PRO
1	B	304	PRO

5.3.2 Protein sidechains [i](#)

In the following table, the Percentiles column shows the percent sidechain outliers of the chain as a percentile score with respect to all X-ray entries followed by that with respect to entries of similar resolution.

The Analysed column shows the number of residues for which the sidechain conformation was analysed, and the total number of residues.

Mol	Chain	Analysed	Rotameric	Outliers	Percentiles	
1	A	223/245 (91%)	218 (98%)	5 (2%)	45	78
1	B	223/245 (91%)	218 (98%)	5 (2%)	45	78
All	All	446/490 (91%)	436 (98%)	10 (2%)	44	78

All (10) residues with a non-rotameric sidechain are listed below:

Mol	Chain	Res	Type
1	A	262	ILE
1	A	429	THR
1	A	456	THR
1	A	491	LEU
1	A	501	LYS
1	B	262	ILE
1	B	265	GLU
1	B	429	THR
1	B	456	THR
1	B	491	LEU

Sometimes sidechains can be flipped to improve hydrogen bonding and reduce clashes. All (7) such sidechains are listed below:

Mol	Chain	Res	Type
1	A	324	GLN
1	A	391	ASN
1	A	474	GLN
1	A	532	ASN
1	B	324	GLN
1	B	474	GLN
1	B	532	ASN

5.3.3 RNA [i](#)

There are no RNA molecules in this entry.

5.4 Non-standard residues in protein, DNA, RNA chains [i](#)

There are no non-standard protein/DNA/RNA residues in this entry.

5.5 Carbohydrates [i](#)

There are no oligosaccharides in this entry.

5.6 Ligand geometry [i](#)

2 ligands are modelled in this entry.

In the following table, the Counts columns list the number of bonds (or angles) for which Mogul statistics could be retrieved, the number of bonds (or angles) that are observed in the model and

the number of bonds (or angles) that are defined in the Chemical Component Dictionary. The Link column lists molecule types, if any, to which the group is linked. The Z score for a bond length (or angle) is the number of standard deviations the observed value is removed from the expected value. A bond length (or angle) with $|Z| > 2$ is considered an outlier worth inspection. RMSZ is the root-mean-square of all Z scores of the bond lengths (or angles).

Mol	Type	Chain	Res	Link	Bond lengths			Bond angles		
					Counts	RMSZ	# Z > 2	Counts	RMSZ	# Z > 2
2	72F	A	600	1	45,46,46	1.15	1 (2%)	57,65,65	0.75	4 (7%)
2	72F	B	600	1	45,46,46	1.56	1 (2%)	57,65,65	1.00	6 (10%)

In the following table, the Chirals column lists the number of chiral outliers, the number of chiral centers analysed, the number of these observed in the model and the number defined in the Chemical Component Dictionary. Similar counts are reported in the Torsion and Rings columns. '-' means no outliers of that kind were identified.

Mol	Type	Chain	Res	Link	Chirals	Torsions	Rings
2	72F	A	600	1	-	10/33/35/35	0/4/4/4
2	72F	B	600	1	-	14/33/35/35	0/4/4/4

All (2) bond length outliers are listed below:

Mol	Chain	Res	Type	Atoms	Z	Observed(Å)	Ideal(Å)
2	B	600	72F	C26-C25	10.09	1.54	1.49
2	A	600	72F	C26-C25	7.27	1.53	1.49

All (10) bond angle outliers are listed below:

Mol	Chain	Res	Type	Atoms	Z	Observed(°)	Ideal(°)
2	B	600	72F	C8-C7-C25	3.50	132.16	125.22
2	B	600	72F	O2-C28-C27	-2.82	119.73	122.31
2	A	600	72F	C7-C25-N	2.58	110.00	107.76
2	B	600	72F	C7-C25-N	2.42	109.86	107.76
2	A	600	72F	C5-C6-C3	-2.39	112.90	117.27
2	B	600	72F	C5-C6-C3	-2.34	112.99	117.27
2	A	600	72F	C8-C7-C25	2.29	129.76	125.22
2	B	600	72F	C23-C10-C9	-2.22	117.51	120.46
2	B	600	72F	C27-C26-C25	2.06	115.05	112.78
2	A	600	72F	O2-C28-C27	-2.02	120.46	122.31

There are no chirality outliers.

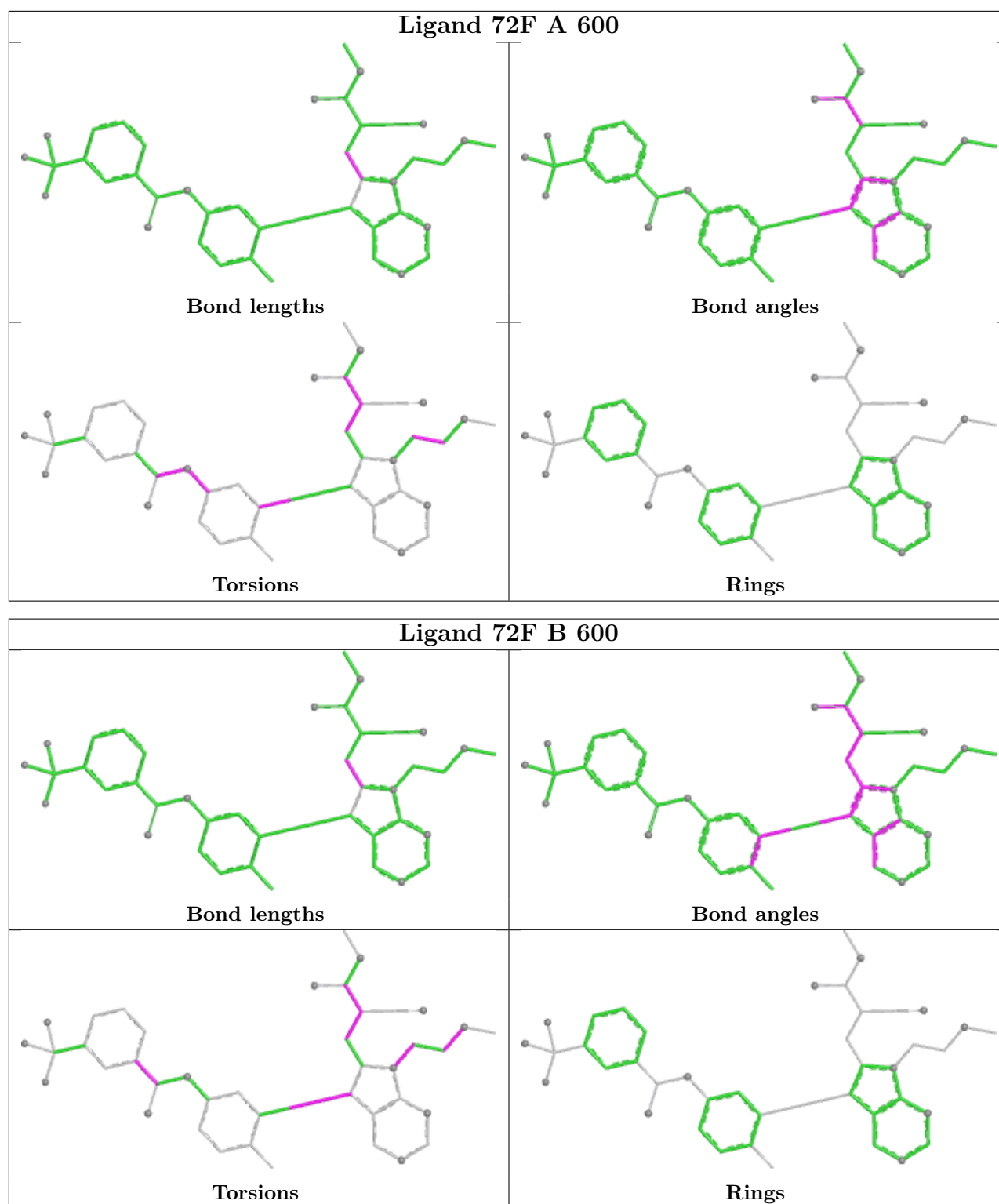
All (24) torsion outliers are listed below:

Mol	Chain	Res	Type	Atoms
2	A	600	72F	C25-C26-C27-C30
2	B	600	72F	C6-C7-C8-C9
2	B	600	72F	C26-C27-C28-O2
2	B	600	72F	C26-C27-C28-N4
2	B	600	72F	C25-C26-C27-C30
2	B	600	72F	C25-C26-C27-C28
2	A	600	72F	C14-C13-N3-C12
2	A	600	72F	O1-C13-N3-C12
2	A	600	72F	C11-C12-N3-C13
2	A	600	72F	C21-C12-N3-C13
2	A	600	72F	O-C1-C2-N
2	B	600	72F	C1-C2-N-C3
2	B	600	72F	C2-C1-O-C
2	B	600	72F	N3-C13-C14-C15
2	B	600	72F	N3-C13-C14-C20
2	B	600	72F	O1-C13-C14-C15
2	B	600	72F	C1-C2-N-C25
2	B	600	72F	O1-C13-C14-C20
2	A	600	72F	C11-C10-C9-C8
2	A	600	72F	C26-C27-C28-N4
2	A	600	72F	C23-C10-C9-C8
2	B	600	72F	C25-C7-C8-C9
2	B	600	72F	C7-C8-C9-C10
2	A	600	72F	C26-C27-C28-O2

There are no ring outliers.

No monomer is involved in short contacts.

The following is a two-dimensional graphical depiction of Mogul quality analysis of bond lengths, bond angles, torsion angles, and ring geometry for all instances of the Ligand of Interest. In addition, ligands with molecular weight > 250 and outliers as shown on the validation Tables will also be included. For torsion angles, if less than 5% of the Mogul distribution of torsion angles is within 10 degrees of the torsion angle in question, then that torsion angle is considered an outlier. Any bond that is central to one or more torsion angles identified as an outlier by Mogul will be highlighted in the graph. For rings, the root-mean-square deviation (RMSD) between the ring in question and similar rings identified by Mogul is calculated over all ring torsion angles. If the average RMSD is greater than 60 degrees and the minimal RMSD between the ring in question and any Mogul-identified rings is also greater than 60 degrees, then that ring is considered an outlier. The outliers are highlighted in purple. The color gray indicates Mogul did not find sufficient equivalents in the CSD to analyse the geometry.



5.7 Other polymers [\(i\)](#)

There are no such residues in this entry.

5.8 Polymer linkage issues

There are no chain breaks in this entry.

6 Fit of model and data

6.1 Protein, DNA and RNA chains

In the following table, the column labelled ‘#RSRZ > 2’ contains the number (and percentage) of RSRZ outliers, followed by percent RSRZ outliers for the chain as percentile scores relative to all X-ray entries and entries of similar resolution. The OWAB column contains the minimum, median, 95th percentile and maximum values of the occupancy-weighted average B-factor per residue. The column labelled ‘Q < 0.9’ lists the number of (and percentage) of residues with an average occupancy less than 0.9.

Mol	Chain	Analysed	<RSRZ>	#RSRZ>2	OWAB(Å ²)	Q<0.9
1	A	258/286 (90%)	2.02	108 (41%) 0 0	25, 55, 137, 205	1 (0%)
1	B	258/286 (90%)	1.96	108 (41%) 0 0	26, 56, 116, 167	1 (0%)
All	All	516/572 (90%)	1.99	216 (41%) 0 0	25, 55, 128, 205	2 (0%)

All (216) RSRZ outliers are listed below:

Mol	Chain	Res	Type	RSRZ
1	B	334	ILE	6.2
1	A	406	GLY	5.6
1	A	262	ILE	5.4
1	B	331	GLU	5.4
1	B	333	PRO	5.3
1	B	278	PHE	5.3
1	A	263	PRO	5.3
1	A	289	THR	5.2
1	B	277	CYS	5.2
1	A	328	VAL	5.2
1	B	300	GLY	5.1
1	A	272	LYS	5.0
1	A	273	LEU	5.0
1	B	298	LYS	4.9
1	A	277	CYS	4.8
1	A	286	TRP	4.8
1	A	274	GLY	4.8
1	B	275	GLN	4.8
1	A	312	GLN	4.6
1	A	301	THR	4.6
1	B	308	LEU	4.5
1	B	262	ILE	4.5
1	A	330	SER	4.5
1	B	382	TYR	4.5

Continued on next page...

Continued from previous page...

Mol	Chain	Res	Type	RSRZ
1	B	328	VAL	4.5
1	A	278	PHE	4.4
1	B	305	GLU	4.4
1	A	299	PRO	4.4
1	A	276	GLY	4.3
1	A	267	LEU	4.3
1	B	307	PHE	4.3
1	A	405	PHE	4.3
1	B	486	GLU	4.2
1	A	271	VAL	4.2
1	A	347	LEU	4.2
1	B	406	GLY	4.2
1	B	283	MET	4.2
1	B	306	ALA	4.1
1	A	398	LEU	4.1
1	B	288	GLY	4.1
1	B	336	ILE	4.1
1	A	324	GLN	4.1
1	A	307	PHE	4.1
1	A	290	THR	4.0
1	A	300	GLY	4.0
1	A	313	VAL	4.0
1	B	299	PRO	4.0
1	A	317	LEU	4.0
1	B	330	SER	4.0
1	B	332	GLU	3.9
1	A	297	LEU	3.9
1	A	303	SER	3.9
1	B	263	PRO	3.9
1	A	308	LEU	3.8
1	A	306	ALA	3.8
1	A	468	ASN	3.8
1	B	297	LEU	3.7
1	B	425	PRO	3.7
1	A	363	LEU	3.7
1	B	286	TRP	3.7
1	A	275	GLN	3.7
1	A	333	PRO	3.7
1	A	302	MET	3.7
1	B	364	VAL	3.7
1	B	304	PRO	3.6
1	A	334	ILE	3.6

Continued on next page...

Continued from previous page...

Mol	Chain	Res	Type	RSRZ
1	A	382	TYR	3.6
1	B	296	THR	3.6
1	A	311	ALA	3.5
1	A	486	GLU	3.5
1	A	457	THR	3.5
1	A	358	LEU	3.5
1	B	309	GLN	3.5
1	A	390	ALA	3.5
1	B	310	GLU	3.4
1	B	274	GLY	3.4
1	A	269	LEU	3.4
1	B	301	THR	3.4
1	A	318	ARG	3.3
1	A	455	LEU	3.3
1	B	522	SER	3.3
1	B	311	ALA	3.3
1	A	335	TYR	3.2
1	A	470	GLU	3.2
1	A	309	GLN	3.2
1	A	298	LYS	3.2
1	A	400	CYS	3.2
1	B	320	GLU	3.2
1	B	273	LEU	3.2
1	B	276	GLY	3.2
1	B	279	GLY	3.2
1	B	329	VAL	3.1
1	B	265	GLU	3.1
1	B	436	TYR	3.1
1	A	336	ILE	3.1
1	B	396	GLU	3.1
1	B	335	TYR	3.0
1	A	425	PRO	3.0
1	B	261	GLU	3.0
1	B	327	ALA	3.0
1	A	260	TRP	3.0
1	B	259	ALA	3.0
1	A	459	GLY	3.0
1	A	283	MET	3.0
1	B	318	ARG	2.9
1	A	305	GLU	2.9
1	A	404	ASP	2.9
1	A	389	ALA	2.9

Continued on next page...

Continued from previous page...

Mol	Chain	Res	Type	RSRZ
1	A	266	SER	2.9
1	B	271	VAL	2.9
1	A	304	PRO	2.9
1	A	533	LEU	2.9
1	B	312	GLN	2.8
1	A	268	ARG	2.8
1	B	363	LEU	2.8
1	A	391	ASN	2.8
1	B	287	ASN	2.8
1	A	258	ASP	2.8
1	A	354	MET	2.8
1	B	269	LEU	2.8
1	B	456	THR	2.8
1	A	332	GLU	2.7
1	B	428	TRP	2.7
1	B	317	LEU	2.7
1	B	325	LEU	2.7
1	B	493	ASP	2.7
1	A	327	ALA	2.7
1	A	472	LEU	2.7
1	A	453	THR	2.7
1	A	348	ASP	2.7
1	B	258	ASP	2.7
1	A	331	GLU	2.7
1	B	528	GLN	2.7
1	B	397	ASN	2.6
1	B	389	ALA	2.6
1	B	272	LYS	2.6
1	A	265	GLU	2.6
1	B	326	TYR	2.6
1	A	451	LEU	2.6
1	A	310	GLU	2.6
1	B	354	MET	2.6
1	A	388	ARG	2.6
1	B	295	LYS	2.6
1	A	494	LEU	2.6
1	A	485	PRO	2.5
1	B	374	MET	2.5
1	A	295	LYS	2.5
1	A	340	TYR	2.5
1	B	270	GLU	2.5
1	B	260	TRP	2.5

Continued on next page...

Continued from previous page...

Mol	Chain	Res	Type	RSRZ
1	B	437	GLY	2.5
1	A	435	LEU	2.4
1	A	475	VAL	2.4
1	A	448	PHE	2.4
1	B	264	ARG	2.4
1	B	405	PHE	2.4
1	A	526	GLN	2.4
1	B	511	TYR	2.4
1	A	323	VAL	2.4
1	B	313	VAL	2.4
1	B	282	TRP	2.4
1	A	510	GLU	2.4
1	B	526	GLN	2.4
1	A	287	ASN	2.4
1	A	430	ALA	2.4
1	B	289	THR	2.4
1	B	453	THR	2.4
1	B	394	VAL	2.3
1	B	403	ALA	2.3
1	B	302	MET	2.3
1	A	429	THR	2.3
1	B	280	GLU	2.3
1	A	350	LEU	2.3
1	B	404	ASP	2.3
1	A	346	LEU	2.3
1	B	346	LEU	2.3
1	A	282	TRP	2.3
1	B	471	VAL	2.3
1	A	288	GLY	2.3
1	B	281	CYS	2.3
1	B	365	ASP	2.2
1	A	479	TYR	2.2
1	B	355	GLY	2.2
1	A	322	LEU	2.2
1	B	315	LYS	2.2
1	B	322	LEU	2.2
1	B	468	ASN	2.2
1	B	324	GLN	2.2
1	A	294	ILE	2.2
1	A	527	TYR	2.2
1	B	448	PHE	2.2
1	A	387	LEU	2.2

Continued on next page...

Continued from previous page...

Mol	Chain	Res	Type	RSRZ
1	A	452	LEU	2.2
1	B	360	LEU	2.2
1	A	394	VAL	2.1
1	A	345	SER	2.1
1	B	303	SER	2.1
1	B	496	CYS	2.1
1	A	493	ASP	2.1
1	A	469	ARG	2.1
1	B	443	SER	2.1
1	A	364	VAL	2.1
1	B	380	MET	2.1
1	A	489	GLU	2.1
1	B	505	GLU	2.1
1	A	384	HIS	2.1
1	A	501	LYS	2.1
1	B	337	VAL	2.1
1	B	268	ARG	2.0
1	A	270	GLU	2.0
1	B	469	ARG	2.0
1	B	344	GLY	2.0
1	B	285	THR	2.0
1	B	521	THR	2.0
1	B	489	GLU	2.0
1	B	502	ASP	2.0

6.2 Non-standard residues in protein, DNA, RNA chains [i](#)

There are no non-standard protein/DNA/RNA residues in this entry.

6.3 Carbohydrates [i](#)

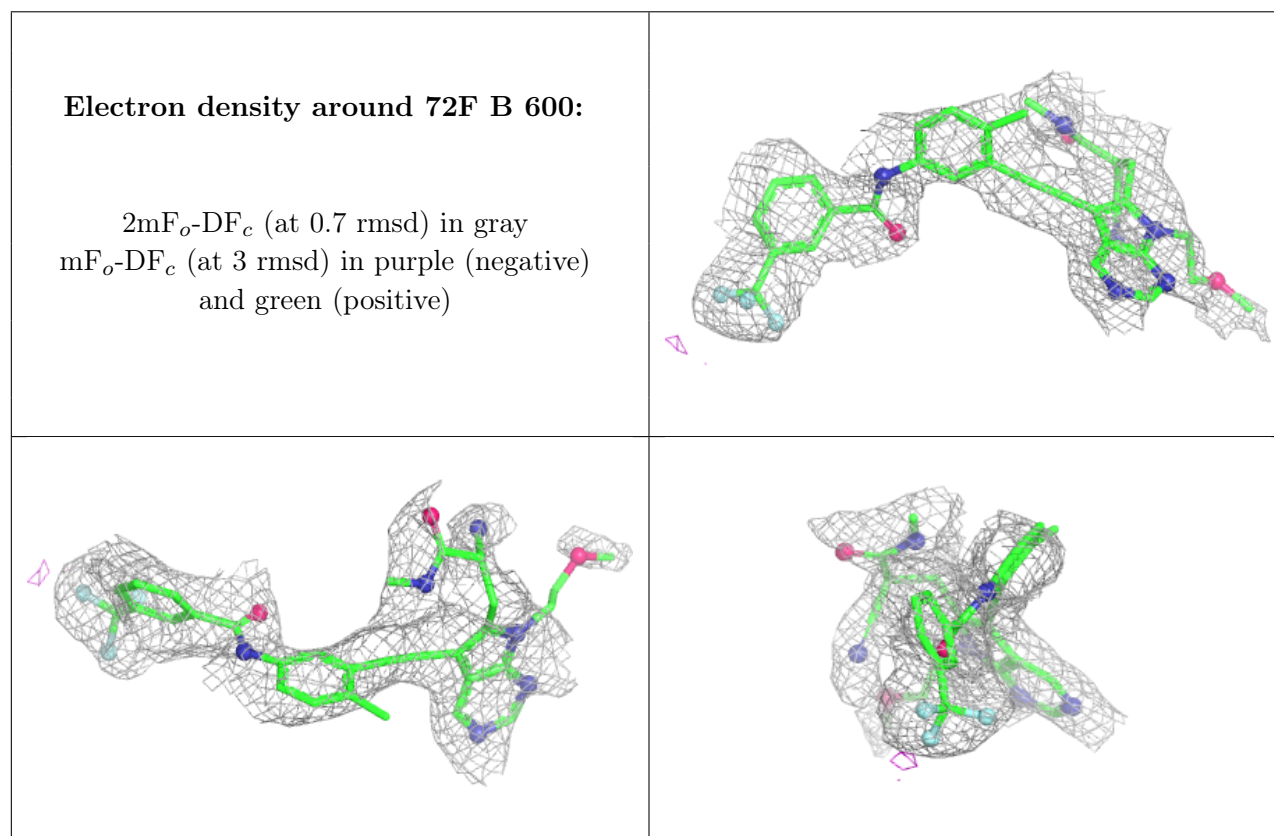
There are no oligosaccharides in this entry.

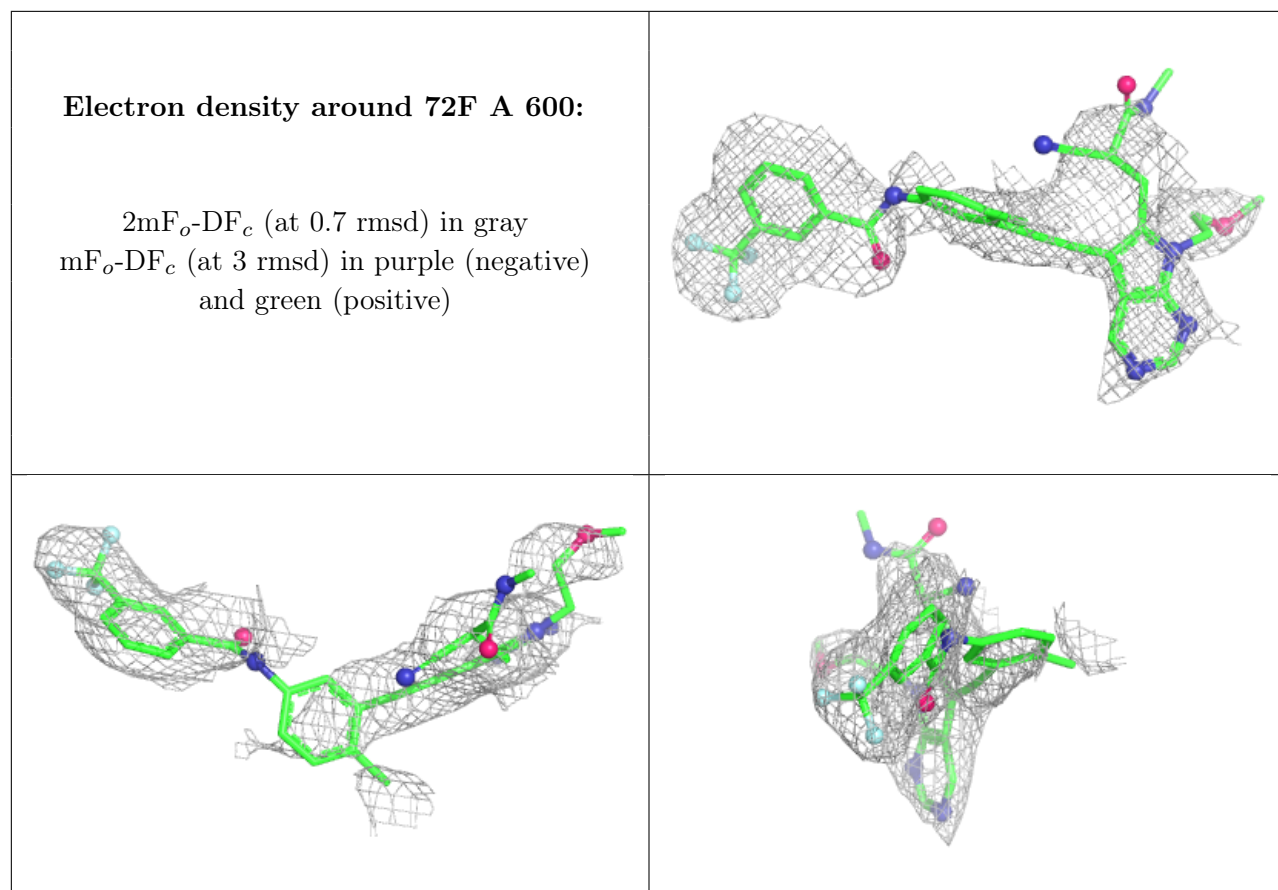
6.4 Ligands [i](#)

In the following table, the Atoms column lists the number of modelled atoms in the group and the number defined in the chemical component dictionary. The B-factors column lists the minimum, median, 95th percentile and maximum values of B factors of atoms in the group. The column labelled 'Q< 0.9' lists the number of atoms with occupancy less than 0.9.

Mol	Type	Chain	Res	Atoms	RSCC	RSR	B-factors(\AA^2)	Q<0.9
2	72F	B	600	43/43	0.73	0.22	57,74,95,97	0
2	72F	A	600	43/43	0.80	0.23	66,97,127,134	0

The following is a graphical depiction of the model fit to experimental electron density of all instances of the Ligand of Interest. In addition, ligands with molecular weight > 250 and outliers as shown on the geometry validation Tables will also be included. Each fit is shown from different orientation to approximate a three-dimensional view.





6.5 Other polymers [i](#)

There are no such residues in this entry.