



Full wwPDB X-ray Structure Validation Report ⓘ

Mar 12, 2026 – 07:48 AM UTC

PDB ID : 3TH4 / pdb_00003th4
Title : Mg²⁺ Is Required for Optimal Folding of the Gamma-Carboxyglutamic Acid (Gla) Domains of Vitamin K-Dependent Clotting Factors At Physiological Ca²⁺
Authors : Vadivel, K.; Agah, S.; Cascio, D.; Padmanabhan, K.; Bajaj, S.P.
Deposited on : 2011-08-18
Resolution : 1.80 Å(reported)

This is a Full wwPDB X-ray Structure Validation Report for a publicly released PDB entry.

We welcome your comments at validation@mail.wwpdb.org

A user guide is available at

<https://www.wwpdb.org/validation/2017/XrayValidationReportHelp>

with specific help available everywhere you see the ⓘ symbol.

The types of validation reports are described at

<http://www.wwpdb.org/validation/2017/FAQs#types>.

The following versions of software and data (see [references ⓘ](#)) were used in the production of this report:

MolProbity : 4-5-2 with Phenix2.0
Mogul : 2022.3.0, CSD as543be (2022)
Xtrriage (Phenix) : 2.0
EDS : 3.0
Buster-report : wwPDB partial adaption of 1.1.7 (2018)
Percentile statistics : 20250101.v01 (using entries in the PDB archive January 1st 2025)
CCP4 : 9.0.010 (Gargrove)
Density-Fitness : 1.0.12
Ideal geometry (proteins) : Engh & Huber (2001)
Ideal geometry (DNA, RNA) : Parkinson et al. (1996)
Validation Pipeline (wwPDB-VP) : 2.49

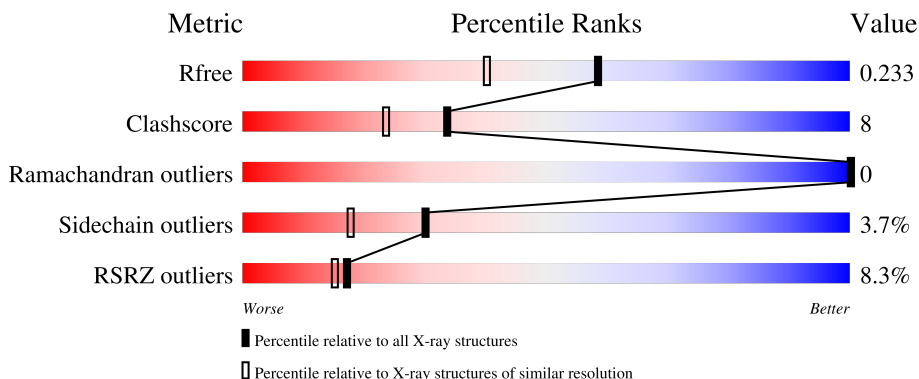
1 Overall quality at a glance

The following experimental techniques were used to determine the structure:

X-RAY DIFFRACTION

The reported resolution of this entry is 1.80 Å.

Percentile scores (ranging between 0-100) for global validation metrics of the entry are shown in the following graphic. The table shows the number of entries on which the scores are based.



Metric	Whole archive (#Entries)	Similar resolution (#Entries, resolution range(Å))
R_{free}	180053	7662 (1.80-1.80)
Clashscore	190562	8479 (1.80-1.80)
Ramachandran outliers	187476	8391 (1.80-1.80)
Sidechain outliers	187428	8390 (1.80-1.80)
RSRZ outliers	180081	7663 (1.80-1.80)

The table below summarises the geometric issues observed across the polymeric chains and their fit to the electron density. The red, orange, yellow and green segments of the lower bar indicate the fraction of residues that contain outliers for ≥ 3 , 2, 1 and 0 types of geometric quality criteria respectively. A grey segment represents the fraction of residues that are not modelled. The numeric value for each fraction is indicated below the corresponding segment, with a dot representing fractions $\leq 5\%$. The upper red bar (where present) indicates the fraction of residues that have poor fit to the electron density. The numeric value is given above the bar.

Mol	Chain	Length	Quality of chain
1	L	142	
2	H	254	
3	T	205	

The following table lists non-polymeric compounds, carbohydrate monomers and non-standard

residues in protein, DNA, RNA chains that are outliers for geometric or electron-density-fit criteria:

Mol	Type	Chain	Res	Chirality	Geometry	Clashes	Electron density
9	CL	H	303	-	-	X	-

2 Entry composition [i](#)

There are 11 unique types of molecules in this entry. The entry contains 5118 atoms, of which 0 are hydrogens and 0 are deuteriums.

In the tables below, the ZeroOcc column contains the number of atoms modelled with zero occupancy, the AltConf column contains the number of residues with at least one atom in alternate conformation and the Trace column contains the number of residues modelled with at most 2 atoms.

- Molecule 1 is a protein called Coagulation factor VII light chain.

Mol	Chain	Residues	Atoms					ZeroOcc	AltConf	Trace
			Total	C	N	O	S			
1	L	142	1135	683	189	248	15	37	0	0

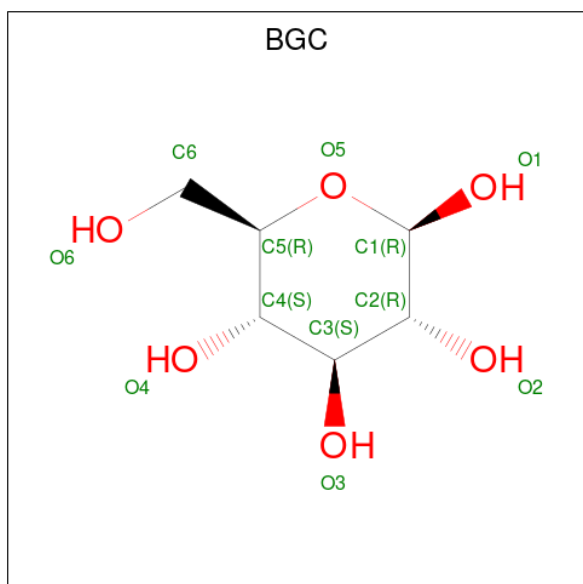
- Molecule 2 is a protein called Coagulation factor VII heavy chain.

Mol	Chain	Residues	Atoms					ZeroOcc	AltConf	Trace
			Total	C	N	O	S			
2	H	254	1974	1253	351	357	13	0	0	0

- Molecule 3 is a protein called Tissue factor.

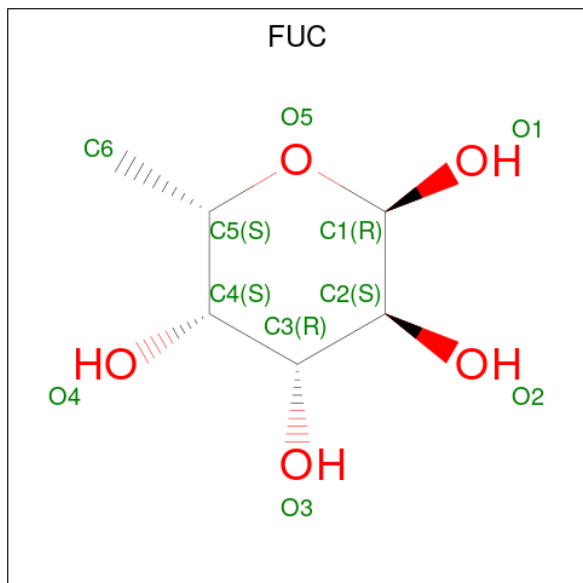
Mol	Chain	Residues	Atoms					ZeroOcc	AltConf	Trace
			Total	C	N	O	S			
3	T	191	1551	987	250	309	5	0	0	0

- Molecule 4 is beta-D-glucopyranose (CCD ID: BGC) (formula: C₆H₁₂O₆).



Mol	Chain	Residues	Atoms			ZeroOcc	AltConf
4	L	1	Total	C	O	0	0
			11	6	5		

- Molecule 5 is alpha-L-fucopyranose (CCD ID: FUC) (formula: C₆H₁₂O₅).



Mol	Chain	Residues	Atoms			ZeroOcc	AltConf
5	L	1	Total	C	O	0	0
			10	6	4		

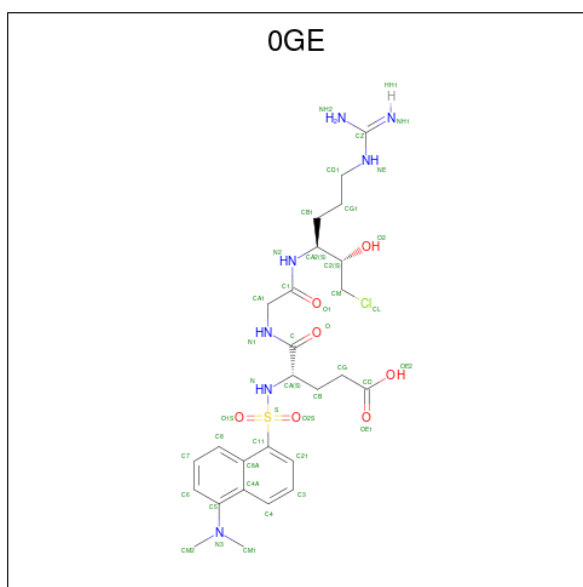
- Molecule 6 is MAGNESIUM ION (CCD ID: MG) (formula: Mg).

Mol	Chain	Residues	Atoms		ZeroOcc	AltConf
6	L	2	Total	Mg	0	0
			2	2		

- Molecule 7 is CALCIUM ION (CCD ID: CA) (formula: Ca).

Mol	Chain	Residues	Atoms		ZeroOcc	AltConf
7	L	6	Total	Ca	0	0
			6	6		
7	H	1	Total	Ca	0	0
			1	1		

- Molecule 8 is N-{{5-(dimethylamino)naphthalen-1-yl}sulfonyl}-L-alpha-glutamyl-N-[(2S,3S)-6-carbamimidamido-1-chloro-2-hydroxyhexan-3-yl]glycinamide (CCD ID: 0GE) (formula: C₂₆H₃₈ClN₇O₇S).



Mol	Chain	Residues	Atoms					ZeroOcc	AltConf
8	L	1	Total	C	N	O	S	0	0
			41	26	7	7	1		

- Molecule 9 is CHLORIDE ION (CCD ID: CL) (formula: Cl).

Mol	Chain	Residues	Atoms		ZeroOcc	AltConf
9	L	1	Total	Cl	0	0
			1	1		
9	H	2	Total	Cl	0	0
			2	2		

- Molecule 10 is SODIUM ION (CCD ID: NA) (formula: Na).

Mol	Chain	Residues	Atoms		ZeroOcc	AltConf
10	H	1	Total	Na	0	0
			1	1		

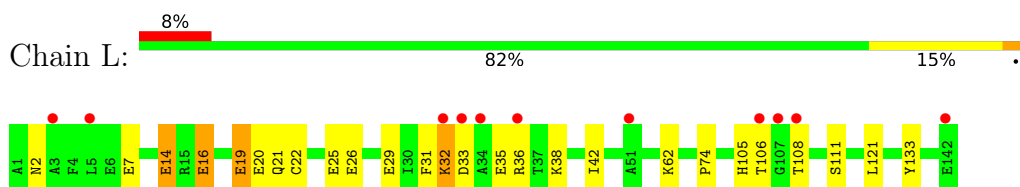
- Molecule 11 is water.

Mol	Chain	Residues	Atoms		ZeroOcc	AltConf
11	L	82	Total	O	0	0
			82	82		
11	H	191	Total	O	0	0
			191	191		
11	T	110	Total	O	0	0
			110	110		

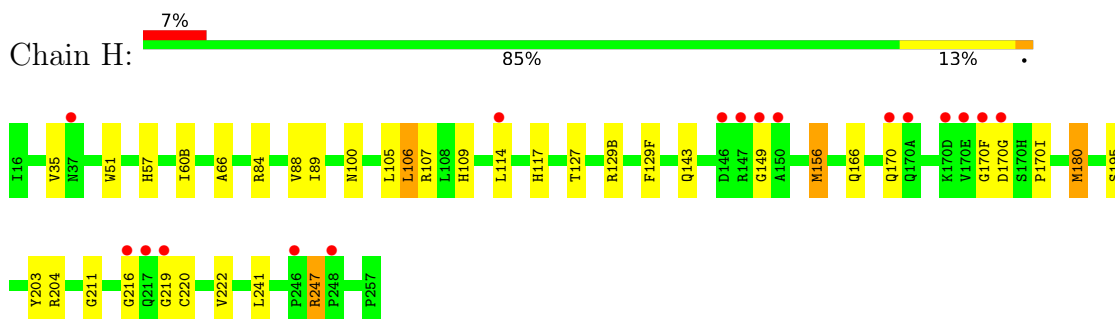
3 Residue-property plots [i](#)

These plots are drawn for all protein, RNA, DNA and oligosaccharide chains in the entry. The first graphic for a chain summarises the proportions of the various outlier classes displayed in the second graphic. The second graphic shows the sequence view annotated by issues in geometry and electron density. Residues are color-coded according to the number of geometric quality criteria for which they contain at least one outlier: green = 0, yellow = 1, orange = 2 and red = 3 or more. A red dot above a residue indicates a poor fit to the electron density ($RSRZ > 2$). Stretches of 2 or more consecutive residues without any outlier are shown as a green connector. Residues present in the sample, but not in the model, are shown in grey.

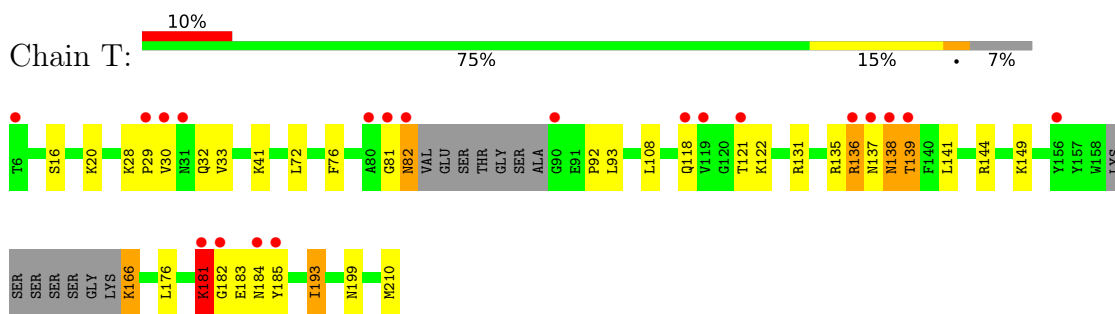
- Molecule 1: Coagulation factor VII light chain



- Molecule 2: Coagulation factor VII heavy chain



- Molecule 3: Tissue factor



4 Data and refinement statistics

Property	Value	Source
Space group	P 21 21 21	Depositor
Cell constants a, b, c, α , β , γ	69.92Å 81.23Å 126.53Å 90.00° 90.00° 90.00°	Depositor
Resolution (Å)	68.36 – 1.80 68.36 – 1.80	Depositor EDS
% Data completeness (in resolution range)	97.1 (68.36-1.80) 97.1 (68.36-1.80)	Depositor EDS
R_{merge}	0.07	Depositor
R_{sym}	0.05	Depositor
$\langle I/\sigma(I) \rangle$ ¹	3.61 (at 1.81Å)	Xtrriage
Refinement program	REFMAC 5.5.0109	Depositor
R, R_{free}	0.204 , 0.235 0.204 , 0.233	Depositor DCC
R_{free} test set	3320 reflections (5.08%)	wwPDB-VP
Wilson B-factor (Å ²)	16.2	Xtrriage
Anisotropy	0.032	Xtrriage
Bulk solvent k_{sol} (e/Å ³), B_{sol} (Å ²)	0.36 , 39.8	EDS
L-test for twinning ²	$\langle L \rangle = 0.50$, $\langle L^2 \rangle = 0.33$	Xtrriage
Estimated twinning fraction	No twinning to report.	Xtrriage
F_o, F_c correlation	0.94	EDS
Total number of atoms	5118	wwPDB-VP
Average B, all atoms (Å ²)	20.0	wwPDB-VP

Xtrriage's analysis on translational NCS is as follows: *The largest off-origin peak in the Patterson function is 5.74% of the height of the origin peak. No significant pseudotranslation is detected.*

¹Intensities estimated from amplitudes.

²Theoretical values of $\langle |L| \rangle$, $\langle L^2 \rangle$ for acentric reflections are 0.5, 0.333 respectively for untwinned datasets, and 0.375, 0.2 for perfectly twinned datasets.

5 Model quality i

5.1 Standard geometry i

Bond lengths and bond angles in the following residue types are not validated in this section: BGC, CL, FUC, CGU, OGE, NA, MG, CA

The Z score for a bond length (or angle) is the number of standard deviations the observed value is removed from the expected value. A bond length (or angle) with $|Z| > 5$ is considered an outlier worth inspection. RMSZ is the root-mean-square of all Z scores of the bond lengths (or angles).

Mol	Chain	Bond lengths		Bond angles	
		RMSZ	# $ Z > 5$	RMSZ	# $ Z > 5$
1	L	1.25	0/1029	1.06	1/1374 (0.1%)
2	H	1.41	6/2024 (0.3%)	1.21	1/2755 (0.0%)
3	T	1.32	2/1585 (0.1%)	1.17	5/2156 (0.2%)
All	All	1.34	8/4638 (0.2%)	1.16	7/6285 (0.1%)

All (8) bond length outliers are listed below:

Mol	Chain	Res	Type	Atoms	Z	Observed(Å)	Ideal(Å)
2	H	88	VAL	CA-CB	-6.46	1.46	1.54
3	T	193	ILE	N-CA	5.48	1.50	1.46
2	H	211	GLY	N-CA	5.42	1.51	1.45
2	H	222	VAL	CA-CB	5.37	1.59	1.54
3	T	144	ARG	CA-C	5.22	1.59	1.52
2	H	156	MET	SD-CE	-5.22	1.66	1.79
2	H	129(F)	PHE	N-CA	5.03	1.52	1.46
2	H	66	ALA	N-CA	5.02	1.52	1.46

All (7) bond angle outliers are listed below:

Mol	Chain	Res	Type	Atoms	Z	Observed(°)	Ideal(°)
3	T	28	LYS	CA-C-N	-6.38	113.37	120.14
3	T	28	LYS	C-N-CA	-6.38	113.37	120.14
3	T	181	LYS	N-CA-C	5.94	118.22	110.43
3	T	193	ILE	N-CA-C	-5.87	102.34	108.15
3	T	33	VAL	N-CA-C	-5.54	100.62	108.65
2	H	170(I)	PRO	O-C-N	-5.54	116.25	123.06
1	L	2	ASN	N-CA-C	5.07	117.75	109.59

There are no chirality outliers.

There are no planarity outliers.

5.2 Too-close contacts [i](#)

In the following table, the Non-H and H(model) columns list the number of non-hydrogen atoms and hydrogen atoms in the chain respectively. The H(added) column lists the number of hydrogen atoms added and optimized by MolProbity. The Clashes column lists the number of clashes within the asymmetric unit, whereas Symm-Clashes lists symmetry-related clashes.

Mol	Chain	Non-H	H(model)	H(added)	Clashes	Symm-Clashes
1	L	1135	0	985	18	0
2	H	1974	0	1949	34	0
3	T	1551	0	1501	24	0
4	L	11	0	10	0	0
5	L	10	0	10	0	0
6	L	2	0	0	0	0
7	H	1	0	0	0	0
7	L	6	0	0	0	0
8	L	41	0	33	1	0
9	H	2	0	0	2	0
9	L	1	0	0	0	0
10	H	1	0	0	0	0
11	H	191	0	0	4	0
11	L	82	0	0	0	0
11	T	110	0	0	2	0
All	All	5118	0	4488	70	0

The all-atom clashscore is defined as the number of clashes found per 1000 atoms (including hydrogen atoms). The all-atom clashscore for this structure is 8.

All (70) close contacts within the same asymmetric unit are listed below, sorted by their clash magnitude.

Atom-1	Atom-2	Interatomic distance (Å)	Clash overlap (Å)
2:H:105:LEU:C	2:H:106:LEU:HD23	1.99	0.86
2:H:219:GLY:O	9:H:303:CL:CL	2.36	0.81
3:T:81:GLY:C	3:T:82:ASN:HD22	1.95	0.75
3:T:121:THR:HG23	3:T:122:LYS:HG3	1.70	0.72
2:H:170(G):ASP:OD1	2:H:170(G):ASP:C	2.35	0.69
2:H:106:LEU:HD23	2:H:106:LEU:N	2.07	0.68
2:H:247:ARG:CG	2:H:247:ARG:HH11	2.07	0.68
2:H:35:VAL:HG13	2:H:35:VAL:O	1.95	0.65
3:T:136:ARG:HG2	3:T:141:LEU:HD21	1.79	0.64
2:H:84:ARG:HH11	2:H:109:HIS:CD2	2.16	0.64
2:H:156:MET:HE1	11:H:522:HOH:O	1.97	0.63
3:T:184:ASN:HA	3:T:210:MET:HE3	1.82	0.61

Continued on next page...

Continued from previous page...

Atom-1	Atom-2	Interatomic distance (Å)	Clash overlap (Å)
3:T:138:ASN:OD1	3:T:139:THR:HG22	2.00	0.61
2:H:170(F):GLY:O	2:H:170(G):ASP:CG	2.44	0.60
3:T:199:ASN:ND2	11:T:510:HOH:O	2.35	0.60
2:H:247:ARG:HG2	2:H:247:ARG:NH1	2.18	0.59
3:T:108:LEU:HD11	3:T:193:ILE:HG12	1.85	0.58
2:H:247:ARG:HH11	2:H:247:ARG:HG2	1.68	0.58
2:H:143:GLN:HG2	2:H:149:GLY:O	2.03	0.58
2:H:117:HIS:HD2	11:H:555:HOH:O	1.87	0.57
2:H:216:GLY:O	9:H:303:CL:CL	2.59	0.57
8:L:211:0GE:NH2	2:H:216:GLY:HA3	2.19	0.57
2:H:35:VAL:O	2:H:35:VAL:CG1	2.54	0.55
3:T:185:TYR:HB2	3:T:210:MET:HE2	1.89	0.55
1:L:38:LYS:O	1:L:42:ILE:HG13	2.06	0.55
2:H:156:MET:CE	11:H:522:HOH:O	2.54	0.55
2:H:89:ILE:HG21	2:H:241:LEU:HD13	1.89	0.54
3:T:137:ASN:O	3:T:138:ASN:OD1	2.24	0.54
1:L:14:CGU:OE21	1:L:19:CGU:HG	2.07	0.54
3:T:185:TYR:H	3:T:210:MET:HE2	1.73	0.53
3:T:185:TYR:N	3:T:210:MET:HE2	2.25	0.52
2:H:166:GLN:O	2:H:170:GLN:HG3	2.10	0.51
1:L:105:HIS:HE1	1:L:111:SER:OG	1.92	0.51
3:T:29:PRO:HB2	3:T:32:GLN:O	2.10	0.51
1:L:133:TYR:HB2	2:H:114:LEU:HD13	1.93	0.51
3:T:138:ASN:OD1	3:T:138:ASN:C	2.54	0.51
2:H:35:VAL:HG21	2:H:60(B):ILE:HD12	1.93	0.50
1:L:62:LYS:NZ	3:T:131:ARG:H	2.09	0.50
3:T:149:LYS:HA	11:T:500:HOH:O	2.11	0.50
3:T:185:TYR:H	3:T:210:MET:CE	2.24	0.50
2:H:247:ARG:CG	2:H:247:ARG:NH1	2.70	0.48
2:H:156:MET:HE2	11:H:456:HOH:O	2.14	0.48
3:T:76:PHE:CD2	3:T:92:PRO:HG2	2.49	0.48
3:T:181:LYS:HG2	3:T:182:GLY:N	2.28	0.48
2:H:203:TYR:CE2	2:H:204:ARG:HD2	2.49	0.47
1:L:14:CGU:OE21	1:L:19:CGU:CG	2.62	0.46
3:T:166:LYS:HA	3:T:166:LYS:HD2	1.19	0.46
3:T:16:SER:HA	3:T:20:LYS:O	2.16	0.46
1:L:33:ASP:HB3	1:L:36:ARG:HG3	1.98	0.46
1:L:33:ASP:OD2	1:L:36:ARG:HG3	2.16	0.45
1:L:33:ASP:HB3	1:L:36:ARG:CD	2.47	0.45
2:H:106:LEU:N	2:H:106:LEU:CD2	2.78	0.45
2:H:219:GLY:O	2:H:220:CYS:SG	2.75	0.44

Continued on next page...

Continued from previous page...

Atom-1	Atom-2	Interatomic distance (Å)	Clash overlap (Å)
2:H:100:ASN:HA	2:H:180:MET:CE	2.48	0.44
1:L:16:CGU:O	1:L:22:CYS:HB3	2.18	0.43
1:L:33:ASP:HB3	1:L:36:ARG:HD2	2.00	0.43
1:L:105:HIS:O	1:L:108:THR:O	2.37	0.43
1:L:62:LYS:HZ3	3:T:131:ARG:H	1.66	0.43
2:H:51:TRP:CZ3	2:H:107:ARG:HB2	2.53	0.43
1:L:133:TYR:CB	2:H:114:LEU:HD13	2.49	0.42
1:L:133:TYR:HB2	2:H:114:LEU:CD1	2.49	0.42
2:H:127:THR:O	2:H:129(B):ARG:HB3	2.20	0.42
1:L:31:PHE:O	1:L:32:LYS:HB2	2.20	0.42
2:H:57:HIS:CE1	2:H:195:SER:OG	2.73	0.42
3:T:81:GLY:C	3:T:82:ASN:ND2	2.72	0.41
3:T:181:LYS:C	3:T:183:GLU:H	2.29	0.41
2:H:219:GLY:C	2:H:220:CYS:SG	3.04	0.41
2:H:170(F):GLY:O	2:H:170(G):ASP:OD1	2.39	0.41
1:L:105:HIS:CE1	1:L:111:SER:OG	2.72	0.40
1:L:74:PRO:HD3	3:T:135:ARG:NH2	2.37	0.40

There are no symmetry-related clashes.

5.3 Torsion angles [i](#)

5.3.1 Protein backbone [i](#)

In the following table, the Percentiles column shows the percent Ramachandran outliers of the chain as a percentile score with respect to all X-ray entries followed by that with respect to entries of similar resolution.

The Analysed column shows the number of residues for which the backbone conformation was analysed, and the total number of residues.

Mol	Chain	Analysed	Favoured	Allowed	Outliers	Percentiles	
1	L	130/142 (92%)	124 (95%)	6 (5%)	0	100	100
2	H	252/254 (99%)	245 (97%)	7 (3%)	0	100	100
3	T	185/205 (90%)	179 (97%)	6 (3%)	0	100	100
All	All	567/601 (94%)	548 (97%)	19 (3%)	0	100	100

There are no Ramachandran outliers to report.

5.3.2 Protein sidechains [i](#)

In the following table, the Percentiles column shows the percent sidechain outliers of the chain as a percentile score with respect to all X-ray entries followed by that with respect to entries of similar resolution.

The Analysed column shows the number of residues for which the sidechain conformation was analysed, and the total number of residues.

Mol	Chain	Analysed	Rotameric	Outliers	Percentiles	
1	L	114/114 (100%)	110 (96%)	4 (4%)	32	19
2	H	216/216 (100%)	213 (99%)	3 (1%)	59	52
3	T	178/189 (94%)	166 (93%)	12 (7%)	15	5
All	All	508/519 (98%)	489 (96%)	19 (4%)	30	18

All (19) residues with a non-rotameric sidechain are listed below:

Mol	Chain	Res	Type
1	L	21	GLN
1	L	32	LYS
1	L	106	THR
1	L	121	LEU
2	H	106	LEU
2	H	180	MET
2	H	247	ARG
3	T	30	VAL
3	T	41	LYS
3	T	72	LEU
3	T	82	ASN
3	T	93	LEU
3	T	118	GLN
3	T	136	ARG
3	T	138	ASN
3	T	139	THR
3	T	166	LYS
3	T	176	LEU
3	T	181	LYS

Sometimes sidechains can be flipped to improve hydrogen bonding and reduce clashes. All (13) such sidechains are listed below:

Mol	Chain	Res	Type
1	L	105	HIS
2	H	37	ASN

Continued on next page...

Continued from previous page...

Mol	Chain	Res	Type
2	H	60(D)	ASN
2	H	63	ASN
2	H	109	HIS
2	H	110	GLN
2	H	117	HIS
2	H	175	ASN
2	H	239	GLN
3	T	82	ASN
3	T	107	ASN
3	T	118	GLN
3	T	199	ASN

5.3.3 RNA [i](#)

There are no RNA molecules in this entry.

5.4 Non-standard residues in protein, DNA, RNA chains [i](#)

10 non-standard protein/DNA/RNA residues are modelled in this entry.

In the following table, the Counts columns list the number of bonds (or angles) for which Mogul statistics could be retrieved, the number of bonds (or angles) that are observed in the model and the number of bonds (or angles) that are defined in the Chemical Component Dictionary. The Link column lists molecule types, if any, to which the group is linked. The Z score for a bond length (or angle) is the number of standard deviations the observed value is removed from the expected value. A bond length (or angle) with $|Z| > 2$ is considered an outlier worth inspection. RMSZ is the root-mean-square of all Z scores of the bond lengths (or angles).

Mol	Type	Chain	Res	Link	Bond lengths			Bond angles		
					Counts	RMSZ	# Z > 2	Counts	RMSZ	# Z > 2
1	CGU	L	16	7,1	9,11,12	1.12	1 (11%)	10,14,16	1.19	1 (10%)
1	CGU	L	6	7,1	9,11,12	1.04	0	10,14,16	0.98	0
1	CGU	L	25	6,1	9,11,12	0.91	1 (11%)	10,14,16	1.17	0
1	CGU	L	20	7,1	9,11,12	1.17	0	10,14,16	1.33	1 (10%)
1	CGU	L	14	6,1	9,11,12	1.14	1 (11%)	10,14,16	0.77	0
1	CGU	L	29	6,1,7	9,11,12	2.68	3 (33%)	10,14,16	1.23	0
1	CGU	L	35	1	9,11,12	4.33	4 (44%)	10,14,16	1.78	2 (20%)
1	CGU	L	7	7,1	9,11,12	1.40	2 (22%)	10,14,16	1.14	1 (10%)
1	CGU	L	19	6,1	9,11,12	1.38	2 (22%)	10,14,16	0.80	0
1	CGU	L	26	7,1	9,11,12	1.52	2 (22%)	10,14,16	0.81	0

In the following table, the Chirals column lists the number of chiral outliers, the number of chiral centers analysed, the number of these observed in the model and the number defined in the Chemical Component Dictionary. Similar counts are reported in the Torsion and Rings columns. '-' means no outliers of that kind were identified.

Mol	Type	Chain	Res	Link	Chirals	Torsions	Rings
1	CGU	L	16	7,1	-	3/13/14/16	-
1	CGU	L	6	7,1	-	5/13/14/16	-
1	CGU	L	25	6,1	-	3/13/14/16	-
1	CGU	L	20	7,1	-	0/13/14/16	-
1	CGU	L	14	6,1	-	1/13/14/16	-
1	CGU	L	29	6,1,7	-	2/13/14/16	-
1	CGU	L	35	1	-	5/13/14/16	-
1	CGU	L	7	7,1	-	2/13/14/16	-
1	CGU	L	19	6,1	-	0/13/14/16	-
1	CGU	L	26	7,1	-	3/13/14/16	-

All (16) bond length outliers are listed below:

Mol	Chain	Res	Type	Atoms	Z	Observed(Å)	Ideal(Å)
1	L	35	CGU	CB-CG	-10.18	1.26	1.54
1	L	35	CGU	OE11-CD1	6.22	1.40	1.22
1	L	29	CGU	OE11-CD1	6.20	1.40	1.22
1	L	35	CGU	OE12-CD1	-3.67	1.18	1.30
1	L	29	CGU	OE12-CD1	-3.65	1.19	1.30
1	L	35	CGU	OE22-CD2	3.09	1.40	1.30
1	L	29	CGU	OE22-CD2	3.07	1.40	1.30
1	L	19	CGU	OE22-CD2	-2.86	1.21	1.30
1	L	7	CGU	CG-CD1	-2.71	1.48	1.52
1	L	19	CGU	OE12-CD1	-2.59	1.22	1.30
1	L	26	CGU	OE22-CD2	-2.23	1.23	1.30
1	L	25	CGU	OE22-CD2	-2.22	1.23	1.30
1	L	7	CGU	O-C	2.16	1.28	1.20
1	L	14	CGU	OE12-CD1	-2.14	1.23	1.30
1	L	26	CGU	OE12-CD1	-2.08	1.24	1.30
1	L	16	CGU	OE22-CD2	-2.02	1.24	1.30

All (5) bond angle outliers are listed below:

Mol	Chain	Res	Type	Atoms	Z	Observed(°)	Ideal(°)
1	L	20	CGU	CB-CA-C	-3.56	105.52	110.99
1	L	35	CGU	CB-CG-CD2	3.39	120.00	113.11
1	L	35	CGU	CB-CG-CD1	-3.17	106.67	113.11

Continued on next page...

Continued from previous page...

Mol	Chain	Res	Type	Atoms	Z	Observed(°)	Ideal(°)
1	L	16	CGU	CB-CG-CD1	-2.50	108.03	113.11
1	L	7	CGU	CB-CG-CD1	-2.05	108.95	113.11

There are no chirality outliers.

All (24) torsion outliers are listed below:

Mol	Chain	Res	Type	Atoms
1	L	6	CGU	O-C-CA-CB
1	L	6	CGU	CA-CB-CG-CD1
1	L	6	CGU	CA-CB-CG-CD2
1	L	14	CGU	C-CA-CB-CG
1	L	35	CGU	CA-CB-CG-CD1
1	L	6	CGU	OE21-CD2-CG-CB
1	L	6	CGU	OE22-CD2-CG-CB
1	L	7	CGU	OE21-CD2-CG-CB
1	L	7	CGU	OE22-CD2-CG-CB
1	L	16	CGU	OE21-CD2-CG-CB
1	L	16	CGU	OE22-CD2-CG-CB
1	L	26	CGU	OE21-CD2-CG-CB
1	L	26	CGU	OE22-CD2-CG-CB
1	L	35	CGU	OE11-CD1-CG-CB
1	L	35	CGU	OE12-CD1-CG-CB
1	L	35	CGU	OE21-CD2-CG-CB
1	L	35	CGU	OE22-CD2-CG-CB
1	L	16	CGU	OE21-CD2-CG-CD1
1	L	26	CGU	OE11-CD1-CG-CD2
1	L	25	CGU	OE11-CD1-CG-CB
1	L	25	CGU	OE12-CD1-CG-CB
1	L	25	CGU	OE11-CD1-CG-CD2
1	L	29	CGU	OE11-CD1-CG-CD2
1	L	29	CGU	OE12-CD1-CG-CD2

There are no ring outliers.

3 monomers are involved in 3 short contacts:

Mol	Chain	Res	Type	Clashes	Symm-Clashes
1	L	16	CGU	1	0
1	L	14	CGU	2	0
1	L	19	CGU	2	0

5.5 Carbohydrates [i](#)

There are no oligosaccharides in this entry.

5.6 Ligand geometry [i](#)

Of 16 ligands modelled in this entry, 13 are monoatomic - leaving 3 for Mogul analysis.

In the following table, the Counts columns list the number of bonds (or angles) for which Mogul statistics could be retrieved, the number of bonds (or angles) that are observed in the model and the number of bonds (or angles) that are defined in the Chemical Component Dictionary. The Link column lists molecule types, if any, to which the group is linked. The Z score for a bond length (or angle) is the number of standard deviations the observed value is removed from the expected value. A bond length (or angle) with $|Z| > 2$ is considered an outlier worth inspection. RMSZ is the root-mean-square of all Z scores of the bond lengths (or angles).

Mol	Type	Chain	Res	Link	Bond lengths			Bond angles		
					Counts	RMSZ	# Z > 2	Counts	RMSZ	# Z > 2
5	FUC	L	202	1	10,10,11	0.78	0	14,14,16	0.71	0
4	BGC	L	201	1	11,11,12	0.26	0	15,15,17	0.52	0
8	0GE	L	211	2	41,42,43	2.86	3 (7%)	54,58,59	1.73	7 (12%)

In the following table, the Chirals column lists the number of chiral outliers, the number of chiral centers analysed, the number of these observed in the model and the number defined in the Chemical Component Dictionary. Similar counts are reported in the Torsion and Rings columns. '-' means no outliers of that kind were identified.

Mol	Type	Chain	Res	Link	Chirals	Torsions	Rings
5	FUC	L	202	1	-	-	0/1/1/1
4	BGC	L	201	1	-	1/2/19/22	0/1/1/1
8	0GE	L	211	2	-	2/44/44/46	0/2/2/2

All (3) bond length outliers are listed below:

Mol	Chain	Res	Type	Atoms	Z	Observed(Å)	Ideal(Å)
8	L	211	0GE	C11-S	-17.11	1.59	1.77
8	L	211	0GE	C11-C8A	3.37	1.49	1.43
8	L	211	0GE	C8A-C4A	2.65	1.48	1.43

All (7) bond angle outliers are listed below:

Mol	Chain	Res	Type	Atoms	Z	Observed(°)	Ideal(°)
8	L	211	0GE	O2S-S-O1S	-8.27	109.48	119.52
8	L	211	0GE	CB1-CA2-N2	-4.10	104.98	110.30

Continued on next page...

Continued from previous page...

Mol	Chain	Res	Type	Atoms	Z	Observed(°)	Ideal(°)
8	L	211	0GE	C21-C11-S	3.25	120.71	116.92
8	L	211	0GE	C2-CA2-N2	-3.24	105.02	110.90
8	L	211	0GE	CG1-CD1-NE	-2.56	105.01	112.20
8	L	211	0GE	CA1-N1-C	2.22	126.99	121.38
8	L	211	0GE	C21-C11-C8A	-2.14	118.57	120.95

There are no chirality outliers.

All (3) torsion outliers are listed below:

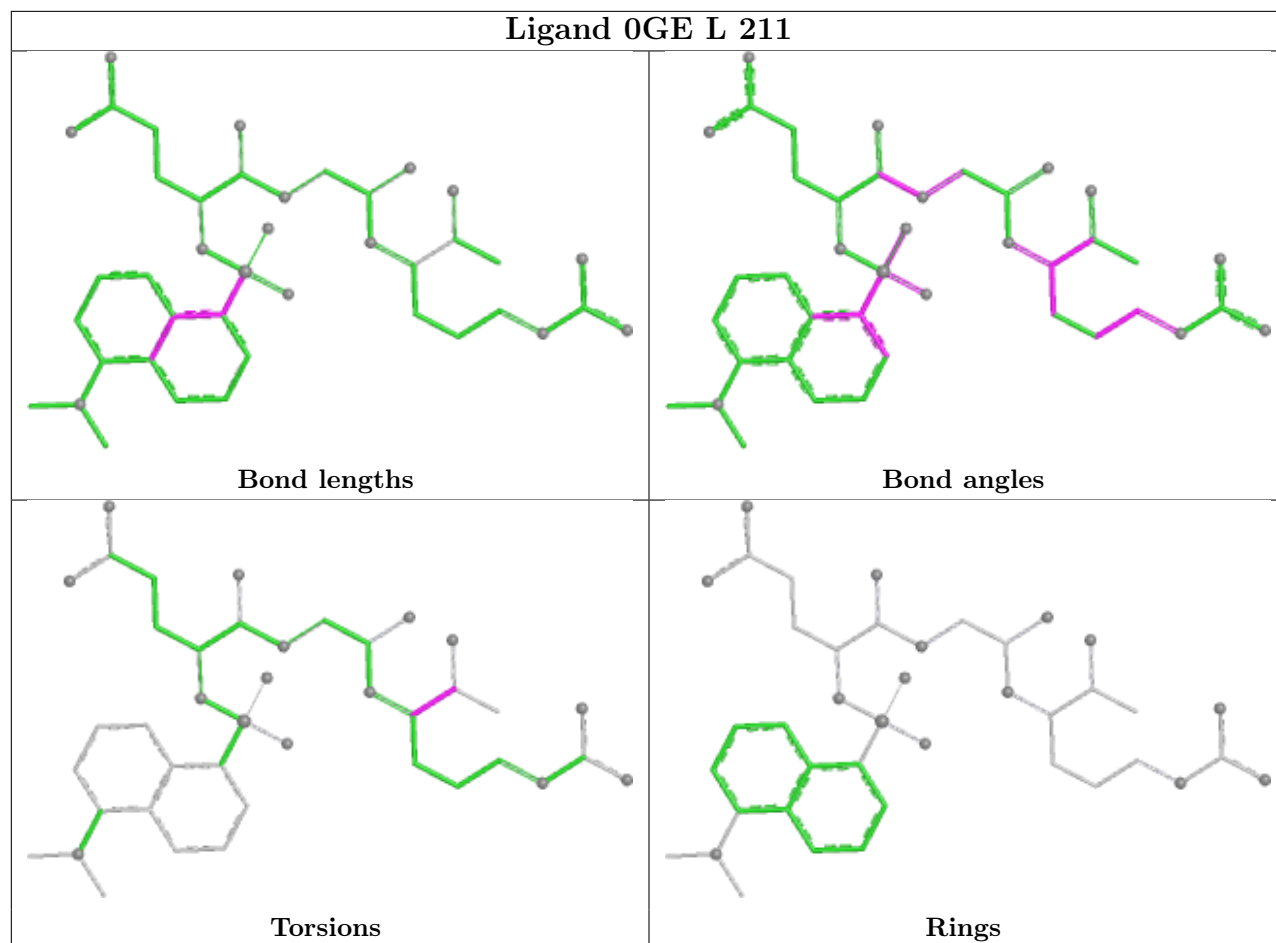
Mol	Chain	Res	Type	Atoms
4	L	201	BGC	O5-C5-C6-O6
8	L	211	0GE	O2-C2-CA2-CB1
8	L	211	0GE	CM-C2-CA2-CB1

There are no ring outliers.

1 monomer is involved in 1 short contact:

Mol	Chain	Res	Type	Clashes	Symm-Clashes
8	L	211	0GE	1	0

The following is a two-dimensional graphical depiction of Mogul quality analysis of bond lengths, bond angles, torsion angles, and ring geometry for all instances of the Ligand of Interest. In addition, ligands with molecular weight > 250 and outliers as shown on the validation Tables will also be included. For torsion angles, if less than 5% of the Mogul distribution of torsion angles is within 10 degrees of the torsion angle in question, then that torsion angle is considered an outlier. Any bond that is central to one or more torsion angles identified as an outlier by Mogul will be highlighted in the graph. For rings, the root-mean-square deviation (RMSD) between the ring in question and similar rings identified by Mogul is calculated over all ring torsion angles. If the average RMSD is greater than 60 degrees and the minimal RMSD between the ring in question and any Mogul-identified rings is also greater than 60 degrees, then that ring is considered an outlier. The outliers are highlighted in purple. The color gray indicates Mogul did not find sufficient equivalents in the CSD to analyse the geometry.



5.7 Other polymers [i](#)

There are no such residues in this entry.

5.8 Polymer linkage issues [i](#)

There are no chain breaks in this entry.

6 Fit of model and data [i](#)

6.1 Protein, DNA and RNA chains [i](#)

In the following table, the column labelled ‘#RSRZ > 2’ contains the number (and percentage) of RSRZ outliers, followed by percent RSRZ outliers for the chain as percentile scores relative to all X-ray entries and entries of similar resolution. The OWAB column contains the minimum, median, 95th percentile and maximum values of the occupancy-weighted average B-factor per residue. The column labelled ‘Q < 0.9’ lists the number of (and percentage) of residues with an average occupancy less than 0.9.

Mol	Chain	Analysed	<RSRZ>	#RSRZ>2	OWAB(Å ²)	Q<0.9
1	L	132/142 (92%)	0.58	11 (8%) 17 15	11, 23, 38, 49	7 (5%)
2	H	254/254 (100%)	-0.10	17 (6%) 24 22	5, 13, 33, 49	0
3	T	191/205 (93%)	0.23	20 (10%) 11 10	9, 17, 44, 58	0
All	All	577/601 (96%)	0.17	48 (8%) 17 15	5, 16, 38, 58	7 (1%)

All (48) RSRZ outliers are listed below:

Mol	Chain	Res	Type	RSRZ
2	H	170(G)	ASP	6.3
3	T	137	ASN	5.8
3	T	81	GLY	5.4
2	H	219	GLY	5.2
1	L	106	THR	4.3
3	T	82	ASN	4.2
3	T	138	ASN	4.1
1	L	107	GLY	4.0
2	H	114	LEU	3.9
3	T	80	ALA	3.7
2	H	216	GLY	3.7
2	H	170(A)	GLN	3.6
2	H	170	GLN	3.6
3	T	182	GLY	3.5
1	L	108	THR	3.5
3	T	90	GLY	3.5
2	H	170(F)	GLY	3.3
2	H	149	GLY	3.3
1	L	142	GLU	3.1
3	T	29	PRO	3.0
3	T	121	THR	3.0
1	L	5	LEU	2.9
3	T	118	GLN	2.9

Continued on next page...

Continued from previous page...

Mol	Chain	Res	Type	RSRZ
3	T	136	ARG	2.9
2	H	248	PRO	2.9
3	T	119	VAL	2.9
2	H	150	ALA	2.9
1	L	3	ALA	2.8
3	T	156	TYR	2.8
1	L	36	ARG	2.7
2	H	147	ARG	2.7
2	H	217	GLN	2.7
3	T	139	THR	2.6
3	T	181	LYS	2.6
2	H	246	PRO	2.5
2	H	37	ASN	2.5
2	H	170(D)	LYS	2.4
3	T	30	VAL	2.4
3	T	185	TYR	2.4
3	T	6	THR	2.4
1	L	33	ASP	2.4
3	T	31	ASN	2.3
3	T	184	ASN	2.3
2	H	146	ASP	2.3
1	L	34	ALA	2.3
2	H	170(E)	VAL	2.2
1	L	32	LYS	2.1
1	L	51	ALA	2.0

6.2 Non-standard residues in protein, DNA, RNA chains [i](#)

In the following table, the Atoms column lists the number of modelled atoms in the group and the number defined in the chemical component dictionary. The B-factors column lists the minimum, median, 95th percentile and maximum values of B factors of atoms in the group. The column labelled 'Q<0.9' lists the number of atoms with occupancy less than 0.9.

Mol	Type	Chain	Res	Atoms	RSCC	RSR	B-factors(Å ²)	Q<0.9
1	CGU	L	35	12/13	0.76	0.18	31,70,96,99	7
1	CGU	L	14	12/13	0.77	0.15	22,31,37,41	0
1	CGU	L	19	12/13	0.78	0.14	30,36,40,47	1
1	CGU	L	29	12/13	0.88	0.11	24,28,34,35	0
1	CGU	L	25	12/13	0.89	0.10	23,25,30,31	0
1	CGU	L	7	12/13	0.90	0.10	20,25,29,33	0
1	CGU	L	20	12/13	0.93	0.08	17,25,27,31	0
1	CGU	L	6	12/13	0.93	0.08	22,24,28,30	0

Continued on next page...

Continued from previous page...

Mol	Type	Chain	Res	Atoms	RSCC	RSR	B-factors(\AA^2)	Q<0.9
1	CGU	L	16	12/13	0.94	0.07	18,20,23,24	0
1	CGU	L	26	12/13	0.94	0.08	18,21,25,26	0

6.3 Carbohydrates [i](#)

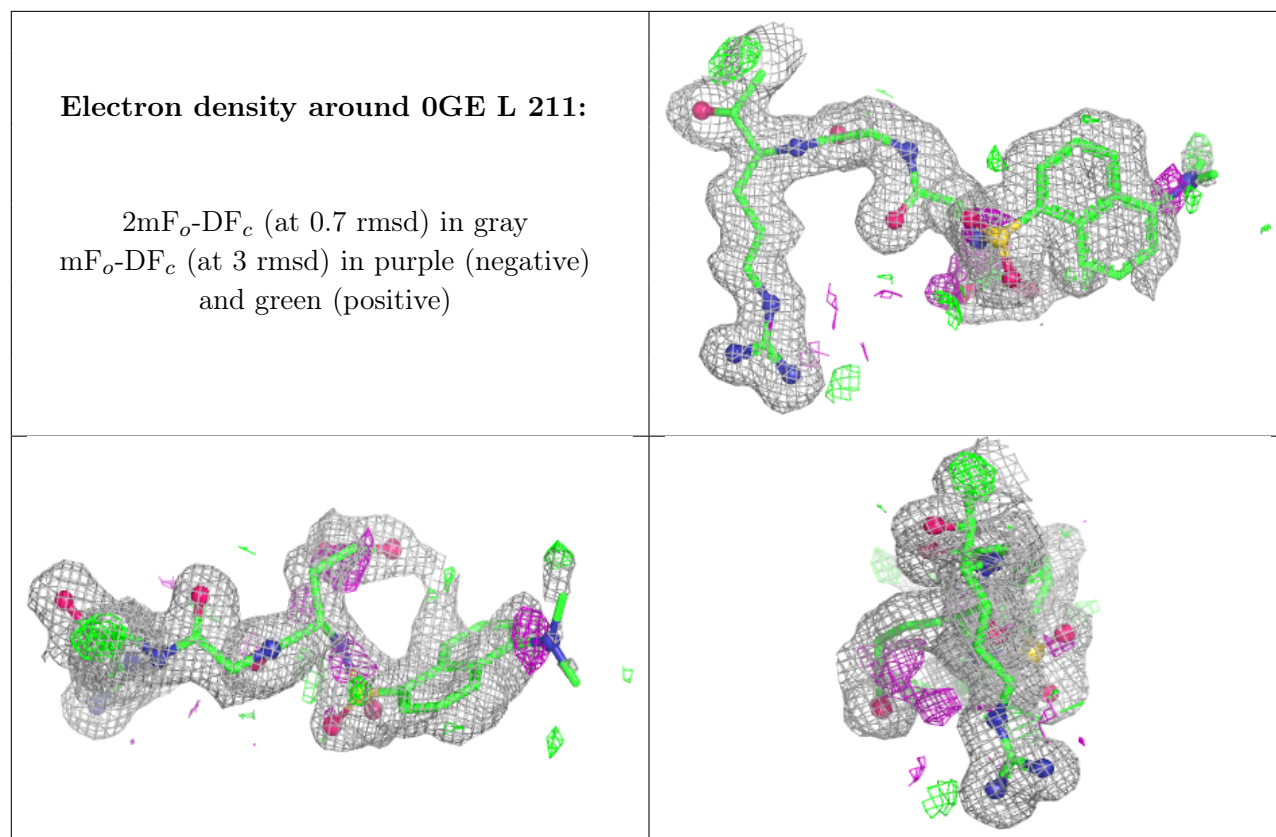
There are no oligosaccharides in this entry.

6.4 Ligands [i](#)

In the following table, the Atoms column lists the number of modelled atoms in the group and the number defined in the chemical component dictionary. The B-factors column lists the minimum, median, 95th percentile and maximum values of B factors of atoms in the group. The column labelled 'Q< 0.9' lists the number of atoms with occupancy less than 0.9.

Mol	Type	Chain	Res	Atoms	RSCC	RSR	B-factors(\AA^2)	Q<0.9
4	BGC	L	201	11/12	0.74	0.17	34,38,40,42	0
5	FUC	L	202	10/11	0.88	0.12	26,28,31,33	0
6	MG	L	209	1/1	0.90	0.09	42,42,42,42	0
8	OGE	L	211	41/42	0.93	0.13	8,18,47,51	0
7	CA	L	208	1/1	0.96	0.05	34,34,34,34	0
7	CA	L	205	1/1	0.96	0.05	22,22,22,22	0
7	CA	L	207	1/1	0.97	0.04	24,24,24,24	0
7	CA	L	204	1/1	0.97	0.05	28,28,28,28	0
7	CA	L	210	1/1	0.97	0.04	23,23,23,23	0
7	CA	L	206	1/1	0.97	0.04	21,21,21,21	0
6	MG	L	203	1/1	0.98	0.03	30,30,30,30	0
10	NA	H	302	1/1	0.98	0.06	21,21,21,21	0
9	CL	L	212	1/1	0.99	0.03	16,16,16,16	0
9	CL	H	303	1/1	0.99	0.16	26,26,26,26	0
9	CL	H	304	1/1	0.99	0.04	21,21,21,21	0
7	CA	H	301	1/1	0.99	0.03	14,14,14,14	0

The following is a graphical depiction of the model fit to experimental electron density of all instances of the Ligand of Interest. In addition, ligands with molecular weight > 250 and outliers as shown on the geometry validation Tables will also be included. Each fit is shown from different orientation to approximate a three-dimensional view.



6.5 Other polymers [i](#)

There are no such residues in this entry.