



wwPDB EM Validation Summary Report ⓘ

Mar 8, 2026 – 03:06 AM UTC

PDB ID : 8THZ / pdb_00008thz
EMDB ID : EMD-41275
Title : CryoEM structure of neutralizing antibodies CBH-7 and HC84.26 in complex with Hepatitis C virus envelope glycoprotein E2
Authors : Shahid, S.; Jiang, L.; Liu, Y.; Hasan, S.S.; Mariuzza, R.A.
Deposited on : 2023-07-18
Resolution : 3.25 Å (reported)
Based on initial models : 6MEI, 6X9X

This is a wwPDB EM Validation Summary Report for a publicly released PDB entry.

We welcome your comments at validation@mail.wwpdb.org

A user guide is available at

<https://www.wwpdb.org/validation/2017/EMValidationReportHelp>

with specific help available everywhere you see the ⓘ symbol.

The types of validation reports are described at

<http://www.wwpdb.org/validation/2017/FAQs#types>.

The following versions of software and data (see [references ⓘ](#)) were used in the production of this report:

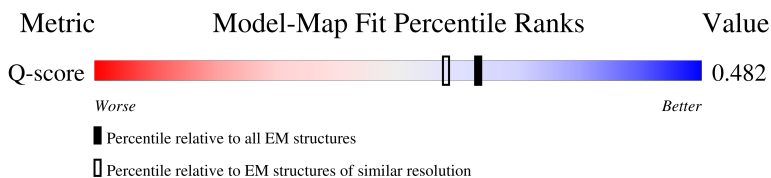
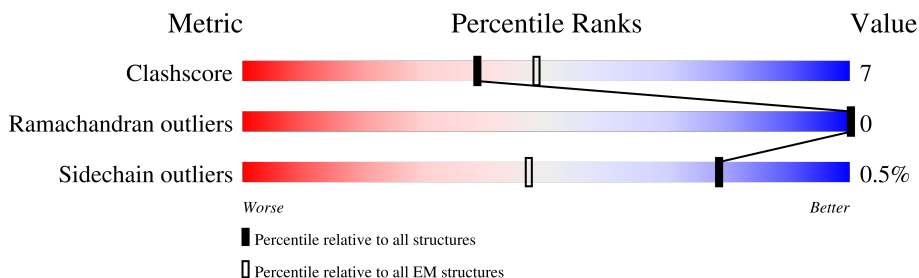
EMDB validation analysis : 0.0.1.dev132
Mogul : 2022.3.0, CSD as543be (2022)
MolProbity : 4-5-2 with Phenix2.0
Percentile statistics : 20250101.v01 (using entries in the PDB archive January 1st 2025)
EM percentile statistics : 202505.v01 (Using data in the EMDB archive up until May 2025)
MapQ : 1.9.13
Ideal geometry (proteins) : Engh & Huber (2001)
Ideal geometry (DNA, RNA) : Parkinson et al. (1996)
Validation Pipeline (wwPDB-VP) : 2.49

1 Overall quality at a glance

The following experimental techniques were used to determine the structure:
ELECTRON MICROSCOPY





The reported resolution of this entry is 3.25 Å.

Percentile scores (ranging between 0-100) for global validation metrics of the entry are shown in the following graphic. The table shows the number of entries on which the scores are based.



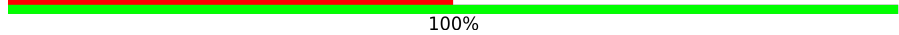
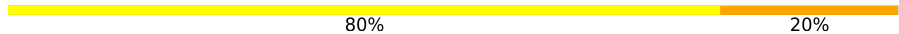
Metric	Whole archive (#Entries)	EM structures (#Entries)	Similar EM resolution (#Entries, resolution range(Å))
Clashscore	229148	23984	-
Ramachandran outliers	224038	23583	-
Sidechain outliers	223484	23102	-
Q-score	-	25397	14599 (2.75 - 3.75)

The table below summarises the geometric issues observed across the polymeric chains and their fit to the map. The red, orange, yellow and green segments of the bar indicate the fraction of residues that contain outliers for ≥ 3 , 2, 1 and 0 types of geometric quality criteria respectively. A grey segment represents the fraction of residues that are not modelled. The numeric value for each fraction is indicated below the corresponding segment, with a dot representing fractions $\leq 5\%$. The upper red bar (where present) indicates the fraction of residues that have poor fit to the EM map (all-atom inclusion $< 40\%$). The numeric value is given above the bar.

Mol	Chain	Length	Quality of chain
1	H	254	 73% 15% 11%
2	L	235	 86% 5% 9%
3	A	291	 61% 20% 19%
4	E	268	 28% 13% 59%

Continued on next page...

Continued from previous page...

Mol	Chain	Length	Quality of chain
5	F	234	
6	C	2	
6	N	2	
7	B	2	
8	D	4	
9	G	5	

2 Entry composition [i](#)

There are 9 unique types of molecules in this entry. The entry contains 13499 atoms, of which 6578 are hydrogens and 0 are deuteriums.

In the tables below, the AltConf column contains the number of residues with at least one atom in alternate conformation and the Trace column contains the number of residues modelled with at most 2 atoms.

- Molecule 1 is a protein called CBH-7 Heavy chain.

Mol	Chain	Residues	Atoms					AltConf	Trace	
			Total	C	H	N	O			S
1	H	225	3280	1054	1610	281	328	7	0	0

- Molecule 2 is a protein called CBH-7 Light chain.

Mol	Chain	Residues	Atoms					AltConf	Trace	
			Total	C	H	N	O			S
2	L	214	3192	1008	1576	270	332	6	0	0

- Molecule 3 is a protein called envelope glycoprotein E2.

Mol	Chain	Residues	Atoms					AltConf	Trace	
			Total	C	H	N	O			S
3	A	235	3491	1153	1671	321	327	19	0	0

There are 29 discrepancies between the modelled and reference sequences:

Chain	Residue	Modelled	Actual	Comment	Reference
A	363	MET	-	initiating methionine	UNP X4ZFZ7
A	364	GLU	-	expression tag	UNP X4ZFZ7
A	365	THR	-	expression tag	UNP X4ZFZ7
A	366	ASP	-	expression tag	UNP X4ZFZ7
A	367	THR	-	expression tag	UNP X4ZFZ7
A	368	LEU	-	expression tag	UNP X4ZFZ7
A	369	LEU	-	expression tag	UNP X4ZFZ7
A	370	LEU	-	expression tag	UNP X4ZFZ7
A	371	TRP	-	expression tag	UNP X4ZFZ7
A	372	VAL	-	expression tag	UNP X4ZFZ7
A	373	LEU	-	expression tag	UNP X4ZFZ7
A	374	LEU	-	expression tag	UNP X4ZFZ7
A	375	LEU	-	expression tag	UNP X4ZFZ7
A	376	TRP	-	expression tag	UNP X4ZFZ7
A	377	VAL	-	expression tag	UNP X4ZFZ7

Continued on next page...

Continued from previous page...

Chain	Residue	Modelled	Actual	Comment	Reference
A	378	PRO	-	expression tag	UNP X4ZFY7
A	379	GLY	-	expression tag	UNP X4ZFY7
A	380	SER	-	expression tag	UNP X4ZFY7
A	381	THR	-	expression tag	UNP X4ZFY7
A	382	GLY	-	expression tag	UNP X4ZFY7
A	383	ASP	-	expression tag	UNP X4ZFY7
A	646	ILE	-	expression tag	UNP X4ZFY7
A	647	GLY	-	expression tag	UNP X4ZFY7
A	648	HIS	-	expression tag	UNP X4ZFY7
A	649	HIS	-	expression tag	UNP X4ZFY7
A	650	HIS	-	expression tag	UNP X4ZFY7
A	651	HIS	-	expression tag	UNP X4ZFY7
A	652	HIS	-	expression tag	UNP X4ZFY7
A	653	HIS	-	expression tag	UNP X4ZFY7

- Molecule 4 is a protein called HC84.26 Heavy chain.

Mol	Chain	Residues	Atoms					AltConf	Trace	
			Total	C	H	N	O			S
4	E	110	1632	531	794	141	161	5	0	0

- Molecule 5 is a protein called HC84.26 Light chain.

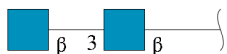
Mol	Chain	Residues	Atoms					AltConf	Trace	
			Total	C	H	N	O			S
5	F	105	1531	488	749	130	161	3	0	0

- Molecule 6 is an oligosaccharide called 2-acetamido-2-deoxy-beta-D-glucopyranose-(1-4)-2-acetamido-2-deoxy-beta-D-glucopyranose.



Mol	Chain	Residues	Atoms					AltConf	Trace
			Total	C	H	N	O		
6	N	2	53	16	25	2	10	0	0
6	C	2	53	16	25	2	10	0	0

- Molecule 7 is an oligosaccharide called 2-acetamido-2-deoxy-beta-D-glucopyranose-(1-3)-2-acetamido-2-deoxy-beta-D-glucopyranose.



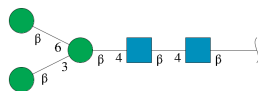
Mol	Chain	Residues	Atoms				AltConf	Trace	
			Total	C	H	N			O
7	B	2	53	16	25	2	10	0	0

- Molecule 8 is an oligosaccharide called beta-D-mannopyranose-(1-3)-beta-D-mannopyranose-(1-4)-2-acetamido-2-deoxy-beta-D-glucopyranose-(1-4)-2-acetamido-2-deoxy-beta-D-glucopyranose.



Mol	Chain	Residues	Atoms				AltConf	Trace	
			Total	C	H	N			O
8	D	4	93	28	43	2	20	0	0

- Molecule 9 is an oligosaccharide called beta-D-mannopyranose-(1-3)-[beta-D-mannopyranose-(1-6)]beta-D-mannopyranose-(1-4)-2-acetamido-2-deoxy-beta-D-glucopyranose-(1-4)-2-acetamido-2-deoxy-beta-D-glucopyranose.

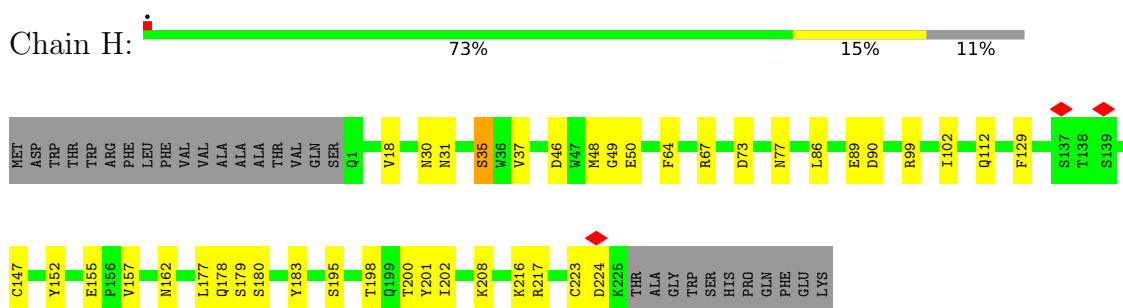


Mol	Chain	Residues	Atoms				AltConf	Trace	
			Total	C	H	N			O
9	G	5	121	34	60	2	25	0	0

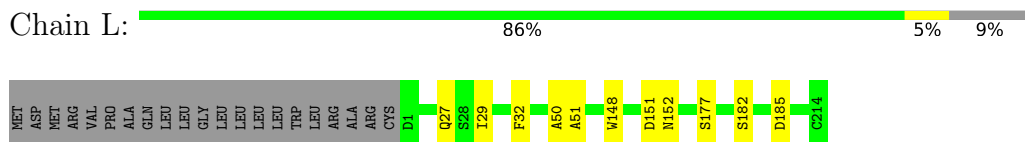
3 Residue-property plots [i](#)

These plots are drawn for all protein, RNA, DNA and oligosaccharide chains in the entry. The first graphic for a chain summarises the proportions of the various outlier classes displayed in the second graphic. The second graphic shows the sequence view annotated by issues in geometry and atom inclusion in map density. Residues are color-coded according to the number of geometric quality criteria for which they contain at least one outlier: green = 0, yellow = 1, orange = 2 and red = 3 or more. A red diamond above a residue indicates a poor fit to the EM map for this residue (all-atom inclusion < 40%). Stretches of 2 or more consecutive residues without any outlier are shown as a green connector. Residues present in the sample, but not in the model, are shown in grey.

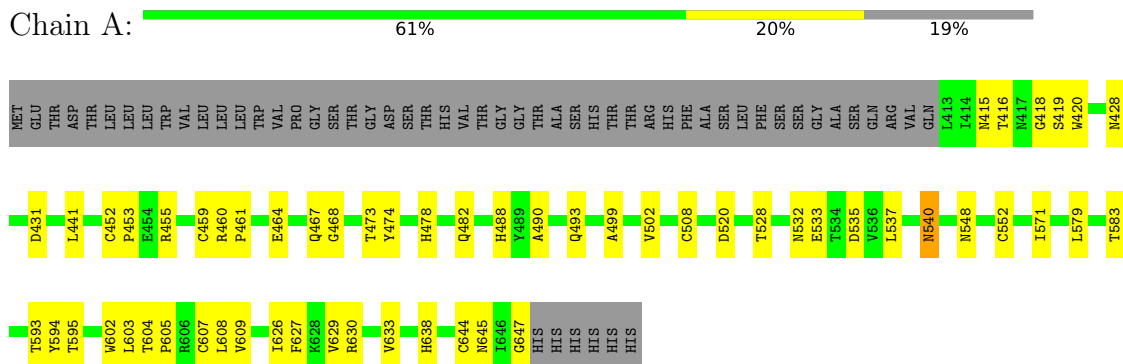
- Molecule 1: CBH-7 Heavy chain



- Molecule 2: CBH-7 Light chain




- Molecule 3: envelope glycoprotein E2




- Molecule 4: HC84.26 Heavy chain



Chain D:  25% 75%


MAG1
MAG2
BMA3
BMA4

- Molecule 9: beta-D-mannopyranose-(1-3)-[beta-D-mannopyranose-(1-6)]beta-D-mannopyranose-(1-4)-2-acetamido-2-deoxy-beta-D-glucopyranose-(1-4)-2-acetamido-2-deoxy-beta-D-glucopyranose

Chain G:  80% 20%


MAG1
MAG2
BMA3
BMA4
BMA5

4 Experimental information

Property	Value	Source
EM reconstruction method	SINGLE PARTICLE	Depositor
Imposed symmetry	POINT, Not provided	
Number of particles used	270875	Depositor
Resolution determination method	FSC 0.143 CUT-OFF	Depositor
CTF correction method	PHASE FLIPPING AND AMPLITUDE CORRECTION	Depositor
Microscope	FEI TITAN KRIOS	Depositor
Voltage (kV)	300	Depositor
Electron dose ($e^-/\text{\AA}^2$)	50	Depositor
Minimum defocus (nm)	1000	Depositor
Maximum defocus (nm)	2500	Depositor
Magnification	81000	Depositor
Image detector	GATAN K3 (6k x 4k)	Depositor
Maximum map value	2.048	Depositor
Minimum map value	-1.239	Depositor
Average map value	-0.000	Depositor
Map value standard deviation	0.029	Depositor
Recommended contour level	0.2	Depositor
Map size (\AA)	358.4, 358.4, 358.4	wwPDB
Map dimensions	320, 320, 320	wwPDB
Map angles ($^\circ$)	90.0, 90.0, 90.0	wwPDB
Pixel spacing (\AA)	1.12, 1.12, 1.12	Depositor

5 Model quality [i](#)

5.1 Standard geometry [i](#)

Bond lengths and bond angles in the following residue types are not validated in this section: NAG, BMA

The Z score for a bond length (or angle) is the number of standard deviations the observed value is removed from the expected value. A bond length (or angle) with $|Z| > 5$ is considered an outlier worth inspection. RMSZ is the root-mean-square of all Z scores of the bond lengths (or angles).

Mol	Chain	Bond lengths		Bond angles	
		RMSZ	# Z >5	RMSZ	# Z >5
1	H	0.14	0/1710	0.34	0/2332
2	L	0.13	0/1648	0.31	0/2236
3	A	0.16	0/1886	0.43	0/2585
4	E	0.12	0/860	0.30	0/1170
5	F	0.12	0/800	0.30	0/1091
All	All	0.14	0/6904	0.35	0/9414

There are no bond length outliers.

There are no bond angle outliers.

There are no chirality outliers.

There are no planarity outliers.

5.2 Too-close contacts [i](#)

In the following table, the Non-H and H(model) columns list the number of non-hydrogen atoms and hydrogen atoms in the chain respectively. The H(added) column lists the number of hydrogen atoms added and optimized by MolProbity. The Clashes column lists the number of clashes within the asymmetric unit, whereas Symm-Clashes lists symmetry-related clashes.

Mol	Chain	Non-H	H(model)	H(added)	Clashes	Symm-Clashes
1	H	1670	1610	1612	25	0
2	L	1616	1576	1578	6	0
3	A	1820	1671	1672	41	0
4	E	838	794	794	25	0
5	F	782	749	751	5	0
6	C	28	25	25	0	0
6	N	28	25	25	1	0
7	B	28	25	25	0	0

Continued on next page...

Continued from previous page...

Mol	Chain	Non-H	H(model)	H(added)	Clashes	Symm-Clashes
8	D	50	43	43	0	0
9	G	61	60	52	1	0
All	All	6921	6578	6577	99	0

The all-atom clashscore is defined as the number of clashes found per 1000 atoms (including hydrogen atoms). The all-atom clashscore for this structure is 7.

The worst 5 of 99 close contacts within the same asymmetric unit are listed below, sorted by their clash magnitude.

Atom-1	Atom-2	Interatomic distance (Å)	Clash overlap (Å)
1:H:178:GLN:OE1	1:H:180:SER:OG	1.90	0.89
3:A:508:CYS:HA	3:A:552:CYS:HB3	1.56	0.86
3:A:540:ASN:O	3:A:548:ASN:ND2	2.12	0.82
1:H:89:GLU:N	1:H:89:GLU:OE1	2.17	0.77
4:E:22:CYS:SG	4:E:36:TRP:NE1	2.57	0.77

There are no symmetry-related clashes.

5.3 Torsion angles [i](#)

5.3.1 Protein backbone [i](#)

In the following table, the Percentiles column shows the percent Ramachandran outliers of the chain as a percentile score with respect to all PDB entries followed by that with respect to all EM entries.

The Analysed column shows the number of residues for which the backbone conformation was analysed, and the total number of residues.

Mol	Chain	Analysed	Favoured	Allowed	Outliers	Percentiles	
1	H	223/254 (88%)	209 (94%)	14 (6%)	0	100	100
2	L	212/235 (90%)	201 (95%)	11 (5%)	0	100	100
3	A	233/291 (80%)	189 (81%)	44 (19%)	0	100	100
4	E	108/268 (40%)	91 (84%)	17 (16%)	0	100	100
5	F	103/234 (44%)	100 (97%)	3 (3%)	0	100	100
All	All	879/1282 (69%)	790 (90%)	89 (10%)	0	100	100

There are no Ramachandran outliers to report.

5.3.2 Protein sidechains [i](#)

In the following table, the Percentiles column shows the percent sidechain outliers of the chain as a percentile score with respect to all PDB entries followed by that with respect to all EM entries.

The Analysed column shows the number of residues for which the sidechain conformation was analysed, and the total number of residues.

Mol	Chain	Analysed	Rotameric	Outliers	Percentiles	
1	H	182/214 (85%)	179 (98%)	3 (2%)	55	70
2	L	188/206 (91%)	188 (100%)	0	100	100
3	A	194/245 (79%)	193 (100%)	1 (0%)	81	82
4	E	86/220 (39%)	86 (100%)	0	100	100
5	F	87/203 (43%)	87 (100%)	0	100	100
All	All	737/1088 (68%)	733 (100%)	4 (0%)	78	82

All (4) residues with a non-rotameric sidechain are listed below:

Mol	Chain	Res	Type
1	H	35	SER
1	H	112	GLN
1	H	208	LYS
3	A	540	ASN

Sometimes sidechains can be flipped to improve hydrogen bonding and reduce clashes. 5 of 6 such sidechains are listed below:

Mol	Chain	Res	Type
3	A	548	ASN
3	A	577	ASN
5	F	88	GLN
2	L	189	HIS
2	L	138	ASN

5.3.3 RNA [i](#)

There are no RNA molecules in this entry.

5.4 Non-standard residues in protein, DNA, RNA chains [i](#)

There are no non-standard protein/DNA/RNA residues in this entry.

5.5 Carbohydrates i

15 monosaccharides are modelled in this entry.

In the following table, the Counts columns list the number of bonds (or angles) for which Mogul statistics could be retrieved, the number of bonds (or angles) that are observed in the model and the number of bonds (or angles) that are defined in the Chemical Component Dictionary. The Link column lists molecule types, if any, to which the group is linked. The Z score for a bond length (or angle) is the number of standard deviations the observed value is removed from the expected value. A bond length (or angle) with $|Z| > 2$ is considered an outlier worth inspection. RMSZ is the root-mean-square of all Z scores of the bond lengths (or angles).

Mol	Type	Chain	Res	Link	Bond lengths			Bond angles		
					Counts	RMSZ	# Z > 2	Counts	RMSZ	# Z > 2
7	NAG	B	1	7,3	14,14,15	0.43	0	17,19,21	0.73	0
7	NAG	B	2	7	14,14,15	0.43	0	17,19,21	0.41	0
6	NAG	C	1	6,3	14,14,15	0.58	0	17,19,21	0.71	0
6	NAG	C	2	6	14,14,15	0.31	0	17,19,21	0.53	0
8	NAG	D	1	8,3	14,14,15	0.68	1 (7%)	17,19,21	0.57	0
8	NAG	D	2	8	14,14,15	0.33	0	17,19,21	0.40	0
8	BMA	D	3	8	11,11,12	1.21	2 (18%)	15,15,17	1.37	2 (13%)
8	BMA	D	4	8	11,11,12	0.76	0	15,15,17	1.26	1 (6%)
9	NAG	G	1	9	14,14,15	0.58	0	17,19,21	1.11	1 (5%)
9	NAG	G	2	9	14,14,15	0.54	0	17,19,21	1.05	1 (5%)
9	BMA	G	3	9	11,11,12	0.39	0	15,15,17	1.52	4 (26%)
9	BMA	G	4	9	11,11,12	0.56	0	15,15,17	0.99	1 (6%)
9	BMA	G	5	9	11,11,12	0.25	0	15,15,17	1.70	1 (6%)
6	NAG	N	1	6,3	14,14,15	1.02	1 (7%)	17,19,21	1.73	3 (17%)
6	NAG	N	2	6	14,14,15	0.28	0	17,19,21	0.53	0

In the following table, the Chirals column lists the number of chiral outliers, the number of chiral centers analysed, the number of these observed in the model and the number defined in the Chemical Component Dictionary. Similar counts are reported in the Torsion and Rings columns. '2' means no outliers of that kind were identified.

Mol	Type	Chain	Res	Link	Chirals	Torsions	Rings
7	NAG	B	1	7,3	-	4/6/23/26	0/1/1/1
7	NAG	B	2	7	-	4/6/23/26	0/1/1/1
6	NAG	C	1	6,3	-	4/6/23/26	0/1/1/1
6	NAG	C	2	6	-	2/6/23/26	0/1/1/1
8	NAG	D	1	8,3	-	3/6/23/26	0/1/1/1
8	NAG	D	2	8	-	0/6/23/26	0/1/1/1

Continued on next page...

Continued from previous page...

Mol	Type	Chain	Res	Link	Chirals	Torsions	Rings
8	BMA	D	3	8	-	0/2/19/22	0/1/1/1
8	BMA	D	4	8	-	0/2/19/22	1/1/1/1
9	NAG	G	1	9	-	2/6/23/26	0/1/1/1
9	NAG	G	2	9	-	4/6/23/26	0/1/1/1
9	BMA	G	3	9	-	2/2/19/22	0/1/1/1
9	BMA	G	4	9	-	0/2/19/22	0/1/1/1
9	BMA	G	5	9	-	2/2/19/22	1/1/1/1
6	NAG	N	1	6,3	-	1/6/23/26	0/1/1/1
6	NAG	N	2	6	-	4/6/23/26	0/1/1/1

All (4) bond length outliers are listed below:

Mol	Chain	Res	Type	Atoms	Z	Observed(Å)	Ideal(Å)
6	N	1	NAG	O5-C1	-3.46	1.37	1.43
8	D	1	NAG	O5-C1	-2.36	1.39	1.43
8	D	3	BMA	C4-C3	2.26	1.58	1.52
8	D	3	BMA	O5-C1	-2.10	1.40	1.43

The worst 5 of 14 bond angle outliers are listed below:

Mol	Chain	Res	Type	Atoms	Z	Observed(°)	Ideal(°)
9	G	5	BMA	C1-O5-C5	5.85	120.03	112.19
6	N	1	NAG	C3-C4-C5	4.58	118.54	110.23
8	D	4	BMA	C1-O5-C5	4.22	117.84	112.19
6	N	1	NAG	C1-O5-C5	4.19	117.81	112.19
8	D	3	BMA	C3-C4-C5	3.35	116.31	110.23

There are no chirality outliers.

5 of 32 torsion outliers are listed below:

Mol	Chain	Res	Type	Atoms
7	B	1	NAG	C1-C2-N2-C7
9	G	3	BMA	C4-C5-C6-O6
6	C	1	NAG	O5-C5-C6-O6
9	G	3	BMA	O5-C5-C6-O6
9	G	1	NAG	O5-C5-C6-O6

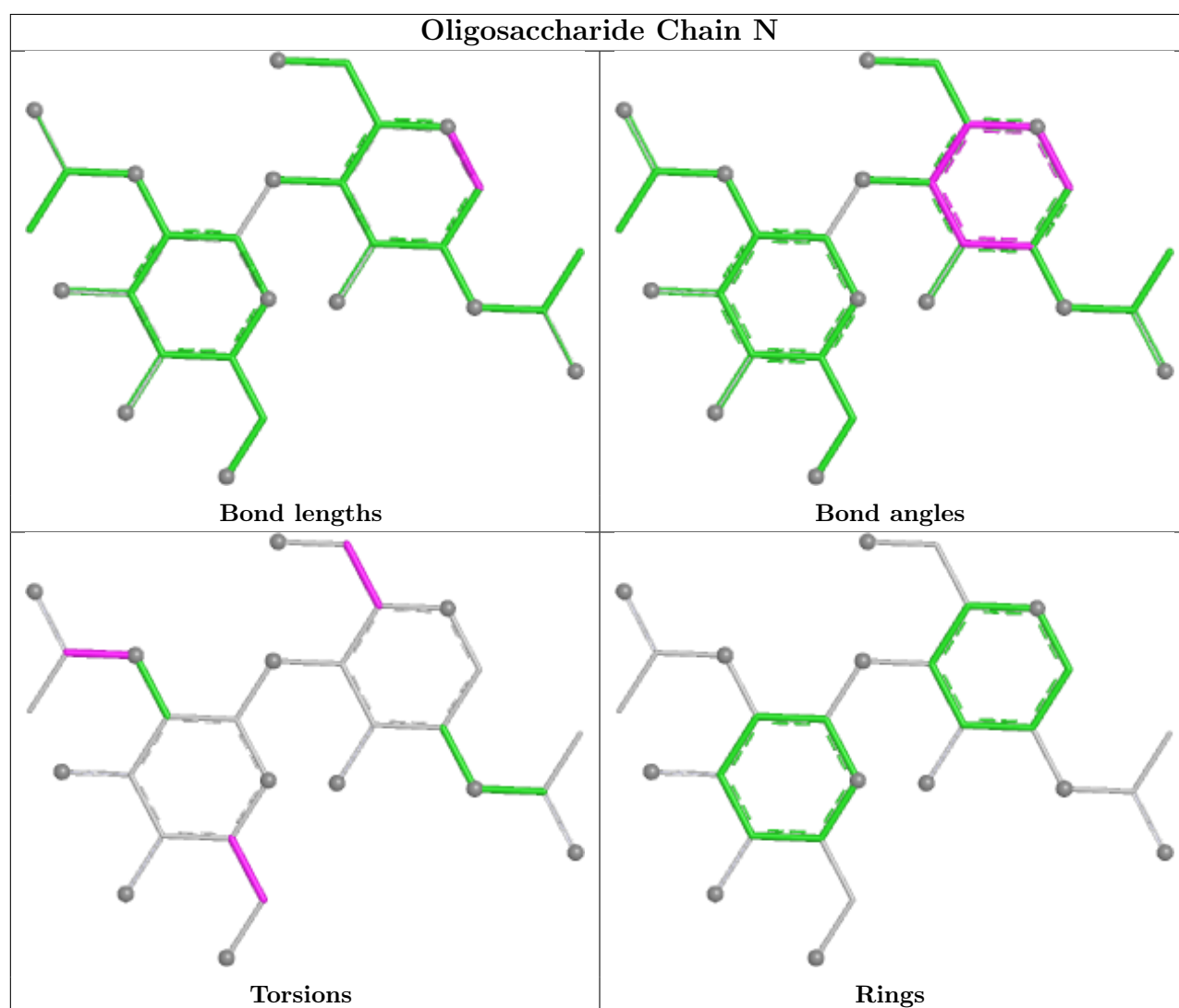
All (2) ring outliers are listed below:

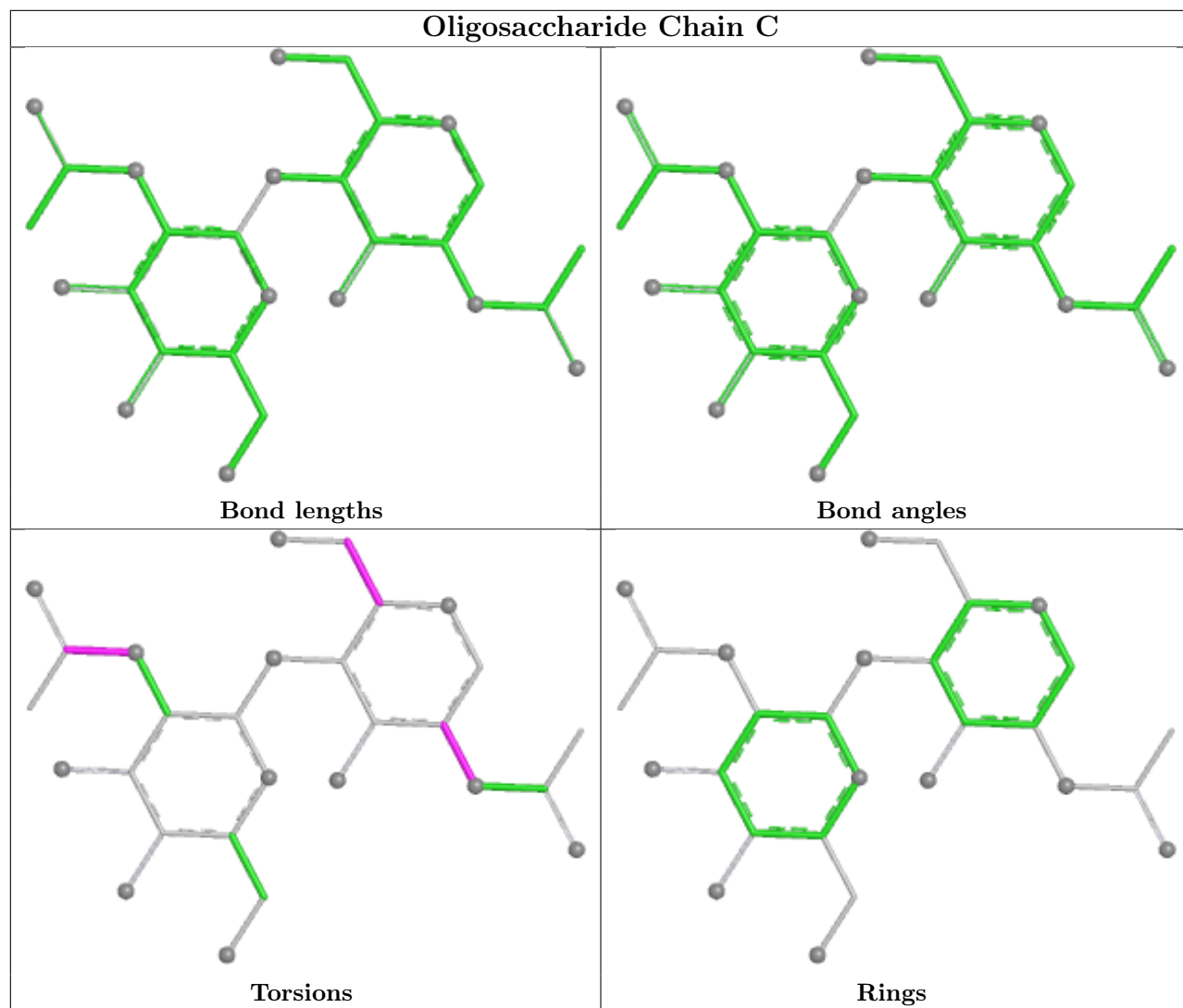
Mol	Chain	Res	Type	Atoms
9	G	5	BMA	C1-C2-C3-C4-C5-O5
8	D	4	BMA	C1-C2-C3-C4-C5-O5

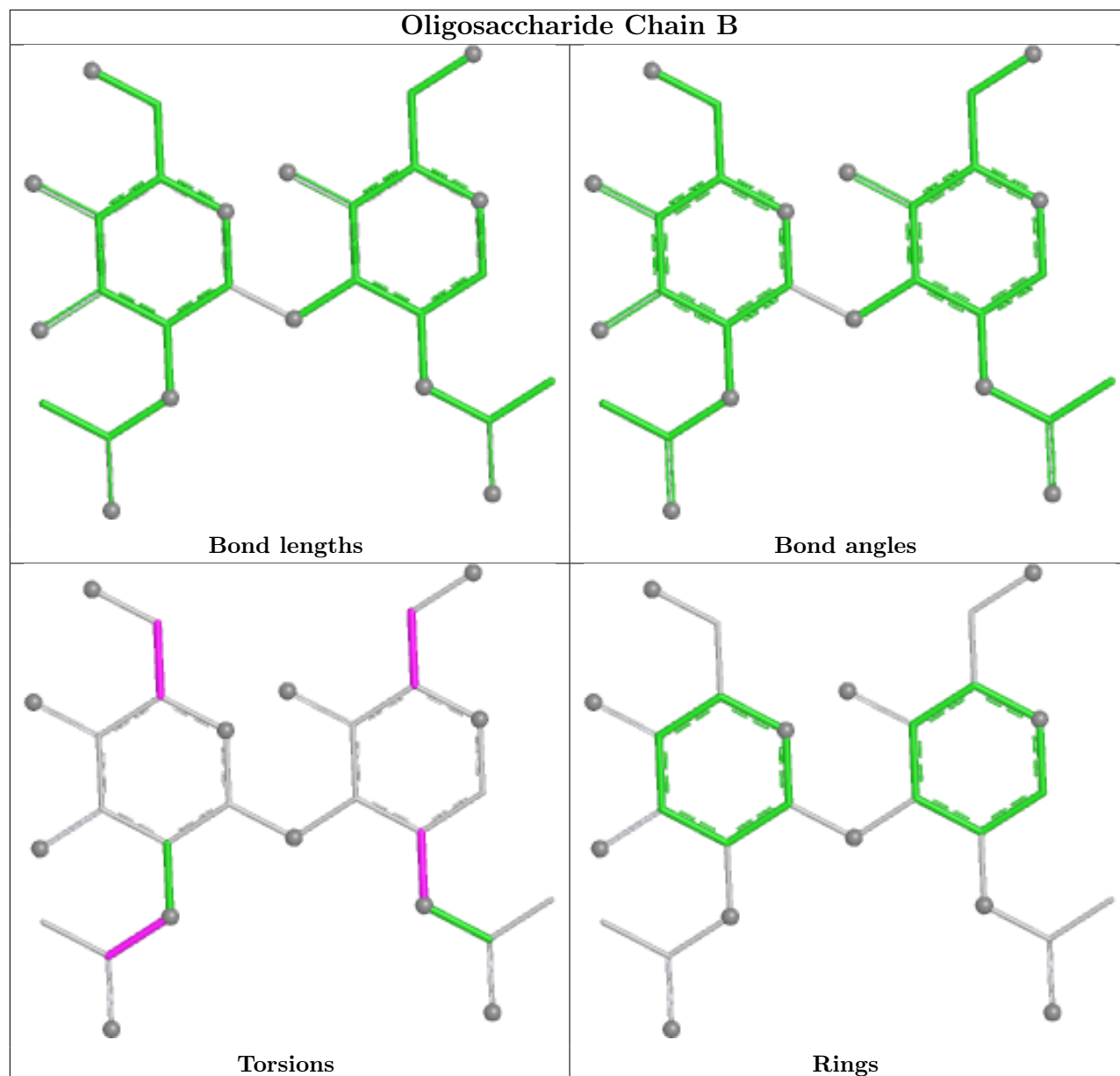
3 monomers are involved in 2 short contacts:

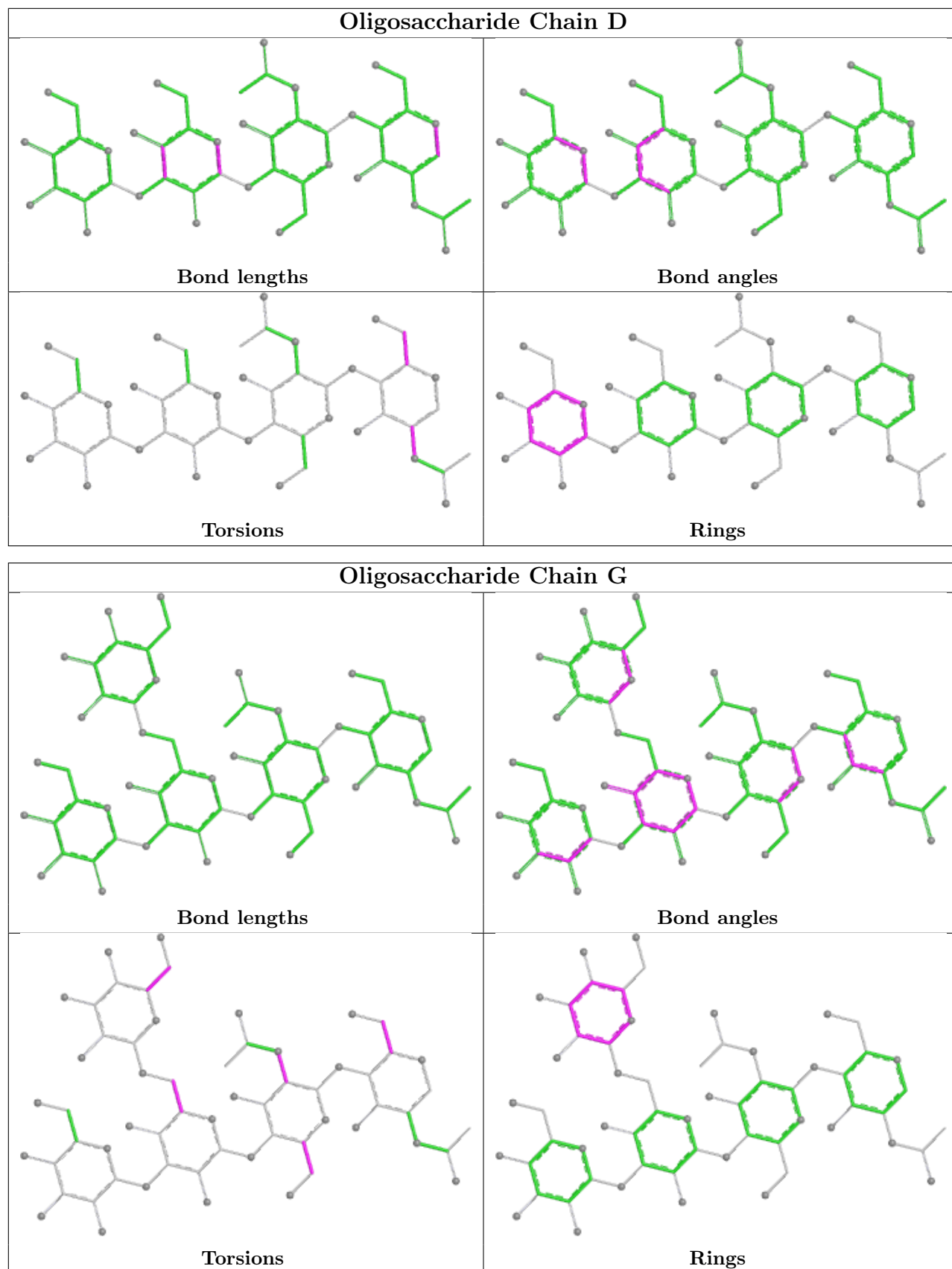
Mol	Chain	Res	Type	Clashes	Symm-Clashes
6	N	1	NAG	1	0
6	N	2	NAG	1	0
9	G	1	NAG	1	0

The following is a two-dimensional graphical depiction of Mogul quality analysis of bond lengths, bond angles, torsion angles, and ring geometry for oligosaccharide.









5.6 Ligand geometry [i](#)

There are no ligands in this entry.

5.7 Other polymers [i](#)

There are no such residues in this entry.

5.8 Polymer linkage issues [i](#)

There are no chain breaks in this entry.

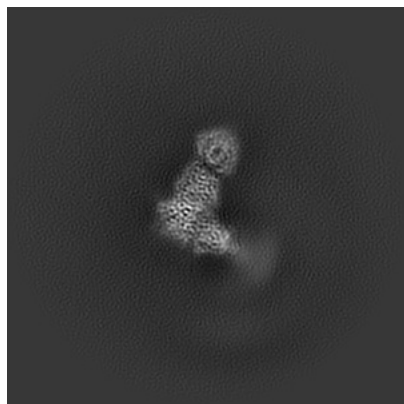
6 Map visualisation [i](#)

This section contains visualisations of the EMDB entry EMD-41275. These allow visual inspection of the internal detail of the map and identification of artifacts.

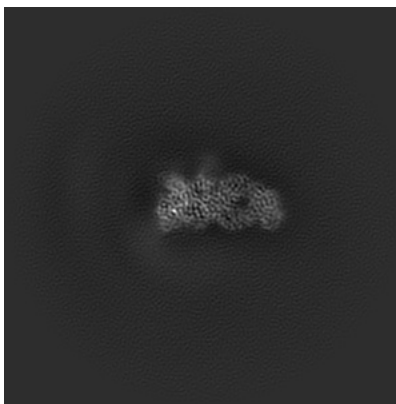
Images derived from a raw map, generated by summing the deposited half-maps, are presented below the corresponding image components of the primary map to allow further visual inspection and comparison with those of the primary map.

6.1 Orthogonal projections [i](#)

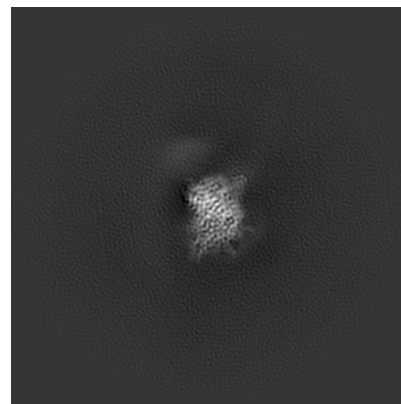
6.1.1 Primary map



X

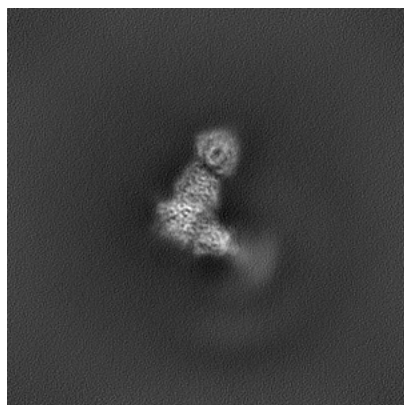


Y

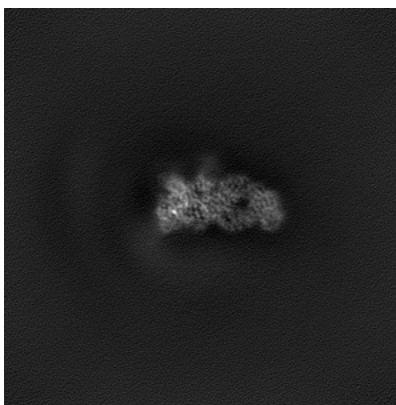


Z

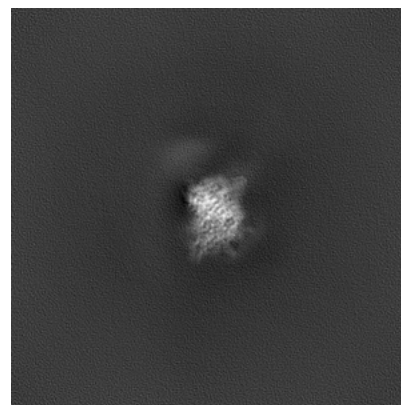
6.1.2 Raw map



X



Y

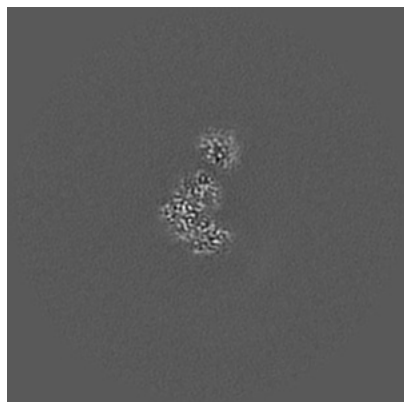


Z

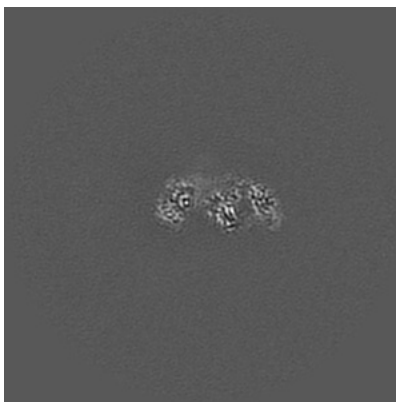
The images above show the map projected in three orthogonal directions.

6.2 Central slices [i](#)

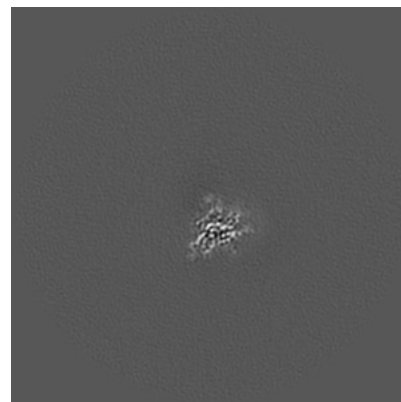
6.2.1 Primary map



X Index: 160

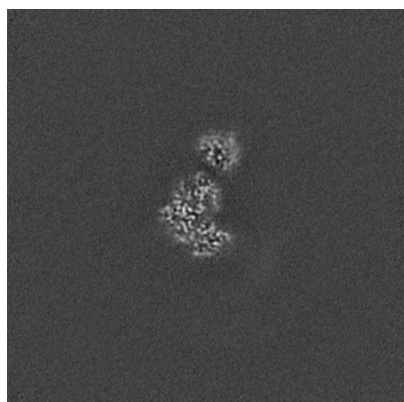


Y Index: 160



Z Index: 160

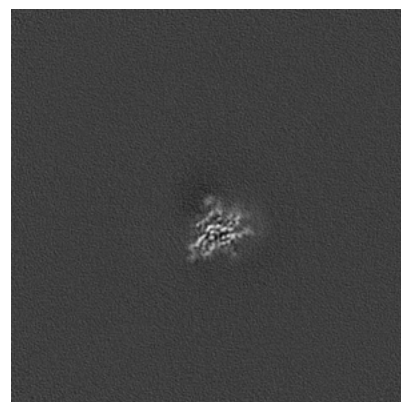
6.2.2 Raw map



X Index: 160



Y Index: 160

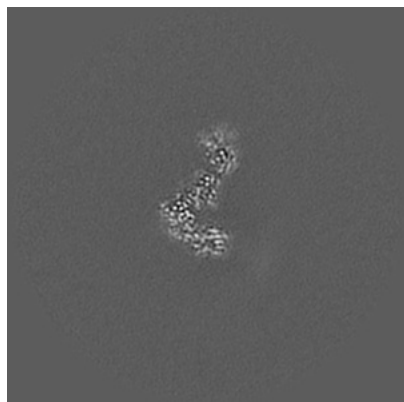


Z Index: 160

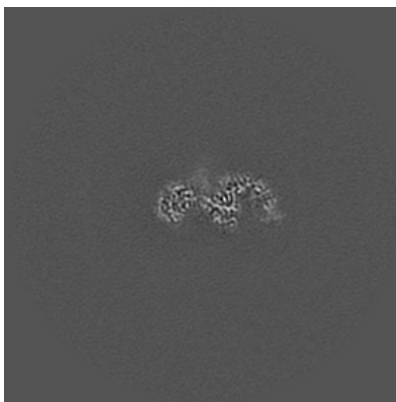
The images above show central slices of the map in three orthogonal directions.

6.3 Largest variance slices [i](#)

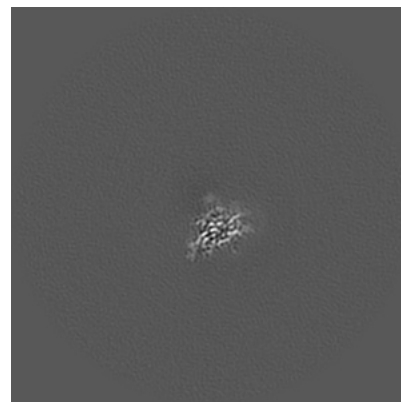
6.3.1 Primary map



X Index: 156

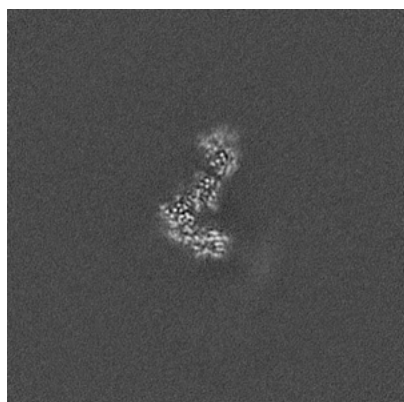


Y Index: 156

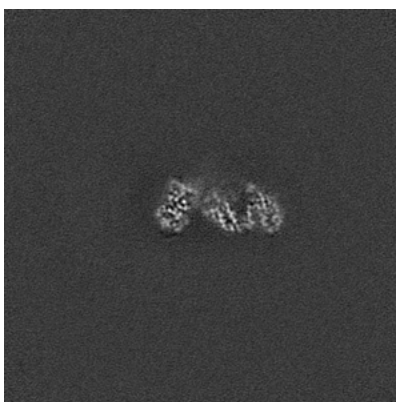


Z Index: 159

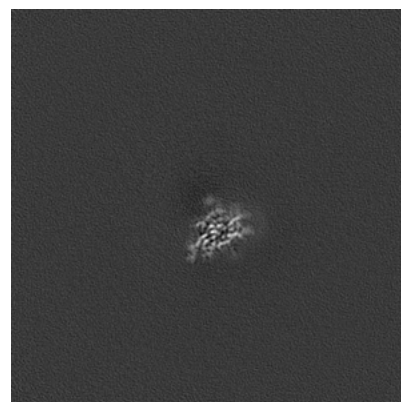
6.3.2 Raw map



X Index: 156



Y Index: 164

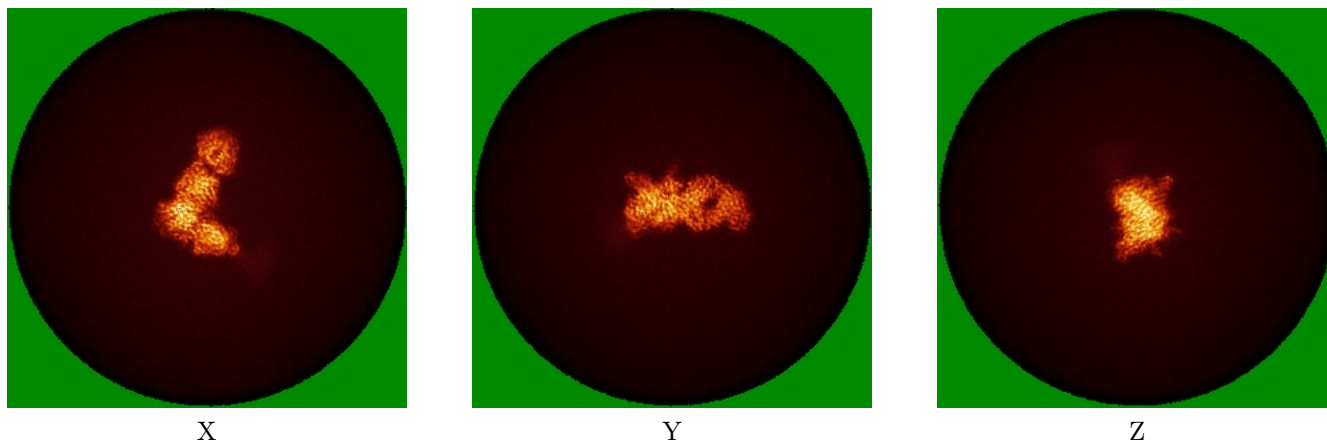


Z Index: 159

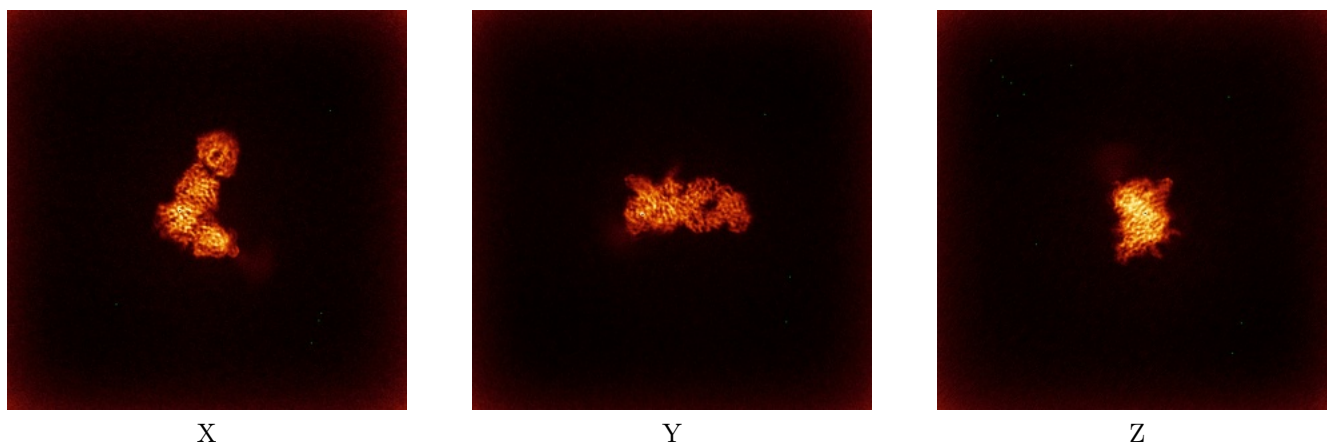
The images above show the largest variance slices of the map in three orthogonal directions.

6.4 Orthogonal standard-deviation projections (False-color) [i](#)

6.4.1 Primary map



6.4.2 Raw map



The images above show the map standard deviation projections with false color in three orthogonal directions. Minimum values are shown in green, max in blue, and dark to light orange shades represent small to large values respectively.

6.5 Orthogonal surface views [i](#)

This section was not generated.

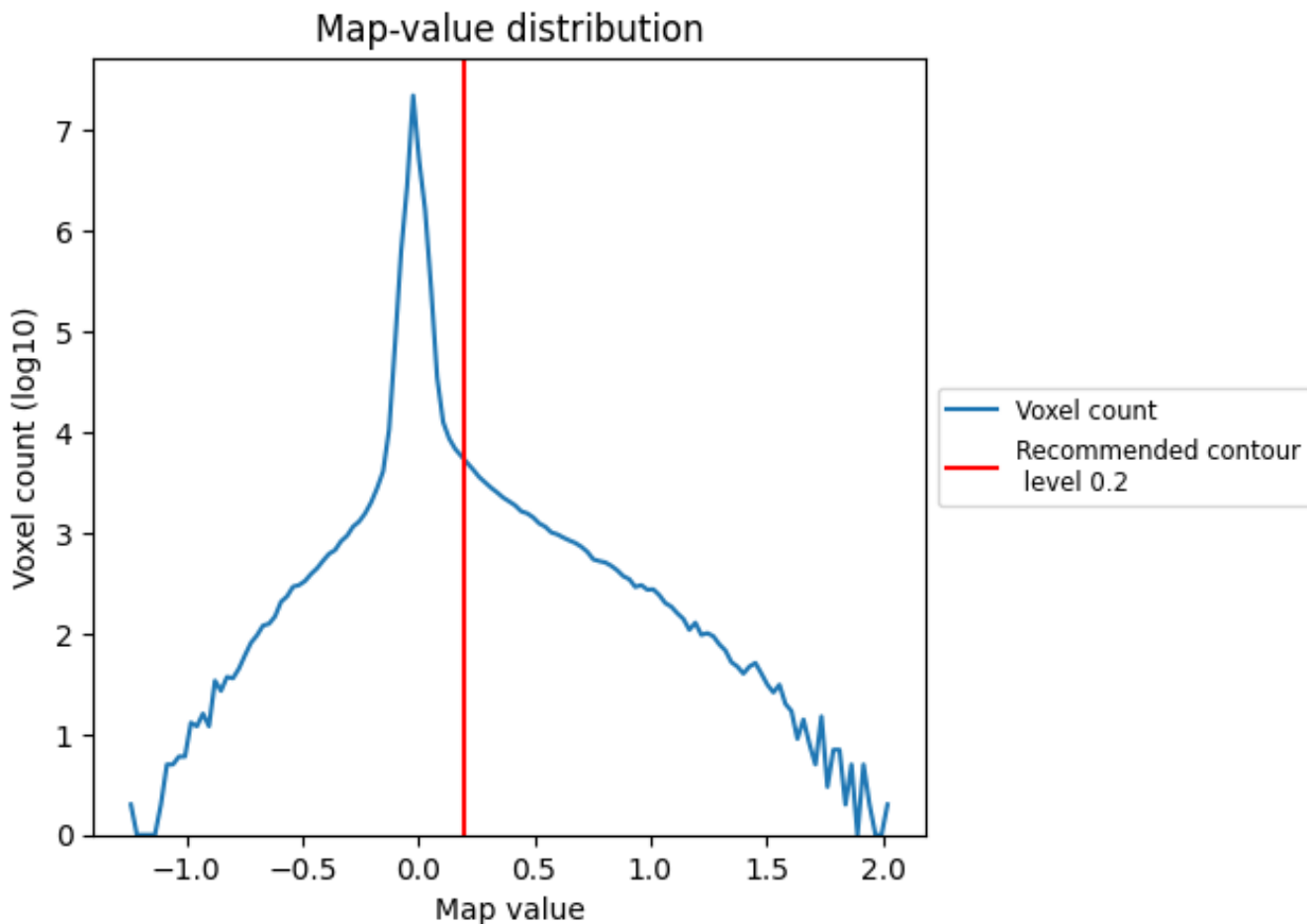
6.6 Mask visualisation [i](#)

This section was not generated. No masks/segmentation were deposited.

7 Map analysis [i](#)

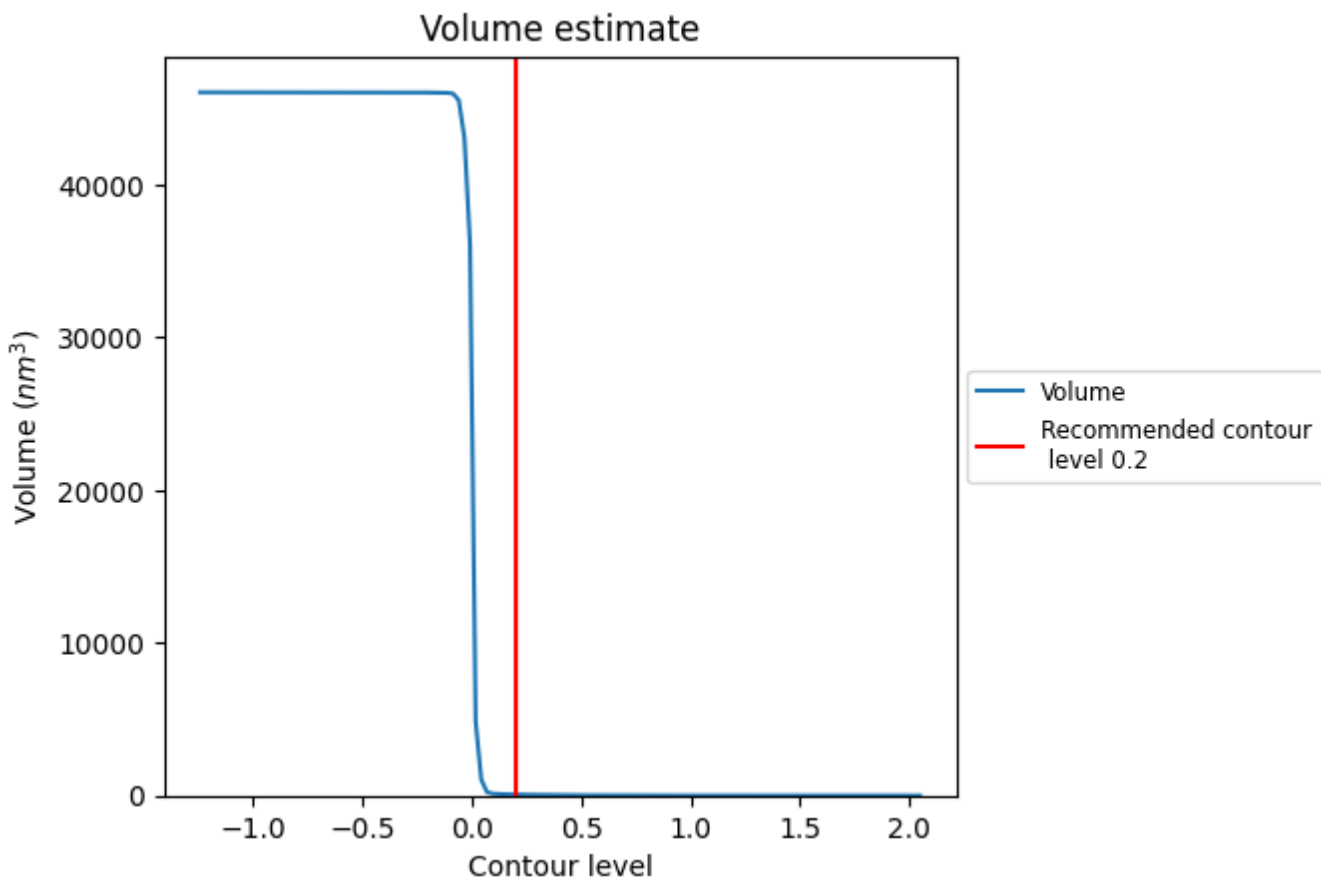
This section contains the results of statistical analysis of the map.

7.1 Map-value distribution [i](#)



The map-value distribution is plotted in 128 intervals along the x-axis. The y-axis is logarithmic. A spike in this graph at zero usually indicates that the volume has been masked.

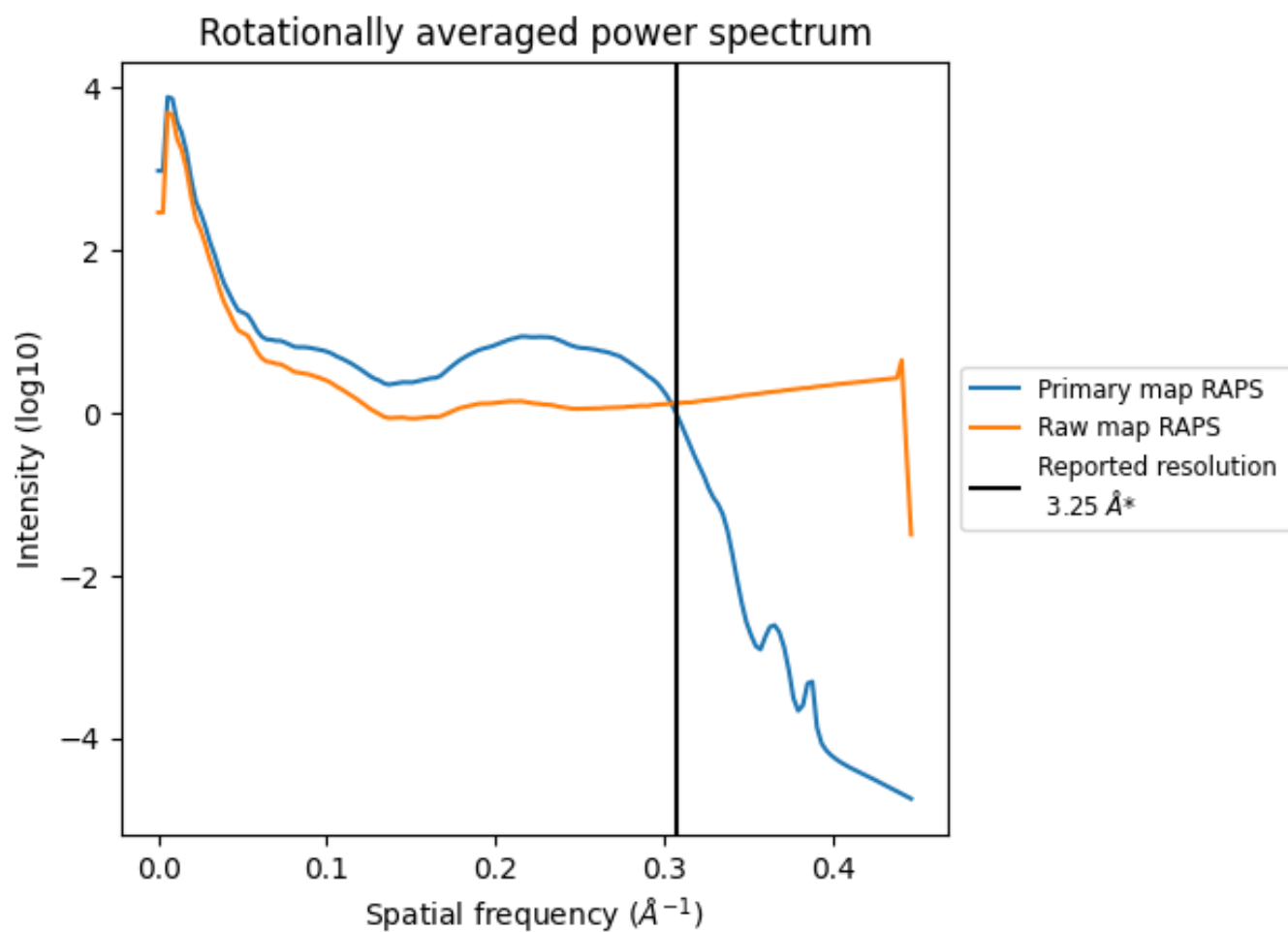
7.2 Volume estimate [i](#)



The volume at the recommended contour level is 69 nm³; this corresponds to an approximate mass of 62 kDa.

The volume estimate graph shows how the enclosed volume varies with the contour level. The recommended contour level is shown as a vertical line and the intersection between the line and the curve gives the volume of the enclosed surface at the given level.

7.3 Rotationally averaged power spectrum [i](#)

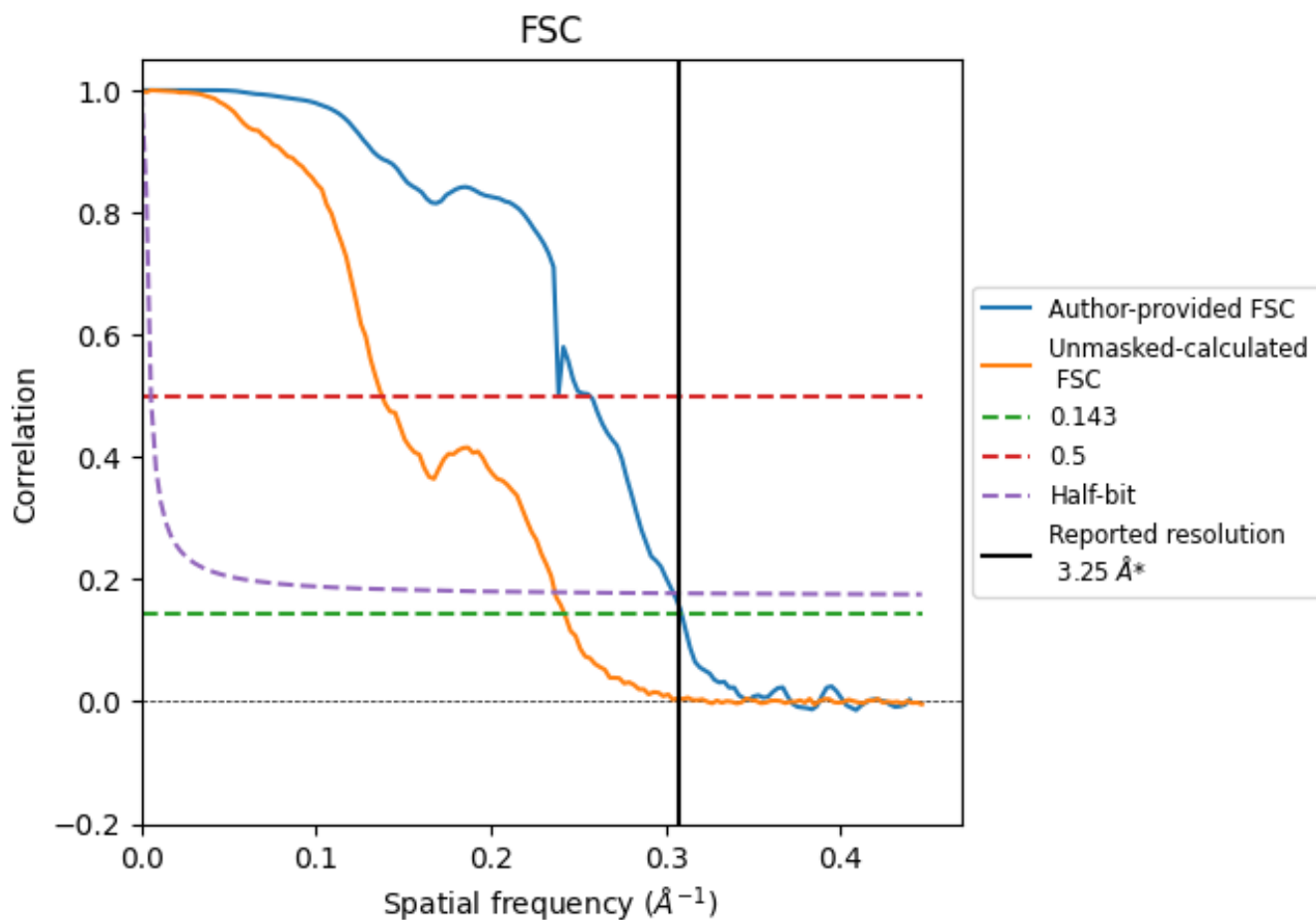


*Reported resolution corresponds to spatial frequency of 0.308 Å⁻¹

8 Fourier-Shell correlation [i](#)

Fourier-Shell Correlation (FSC) is the most commonly used method to estimate the resolution of single-particle and subtomogram-averaged maps. The shape of the curve depends on the imposed symmetry, mask and whether or not the two 3D reconstructions used were processed from a common reference. The reported resolution is shown as a black line. A curve is displayed for the half-bit criterion in addition to lines showing the 0.143 gold standard cut-off and 0.5 cut-off.

8.1 FSC [i](#)



*Reported resolution corresponds to spatial frequency of 0.308 Å⁻¹

8.2 Resolution estimates [i](#)

Resolution estimate (Å)	Estimation criterion (FSC cut-off)		
	0.143	0.5	Half-bit
Reported by author	3.25	-	-
Author-provided FSC curve	3.24	3.90	3.29
Unmasked-calculated*	4.13	7.26	4.23

*Resolution estimate based on FSC curve calculated by comparison of deposited half-maps. The value from deposited half-maps intersecting FSC 0.143 CUT-OFF 4.13 differs from the reported value 3.25 by more than 10 %

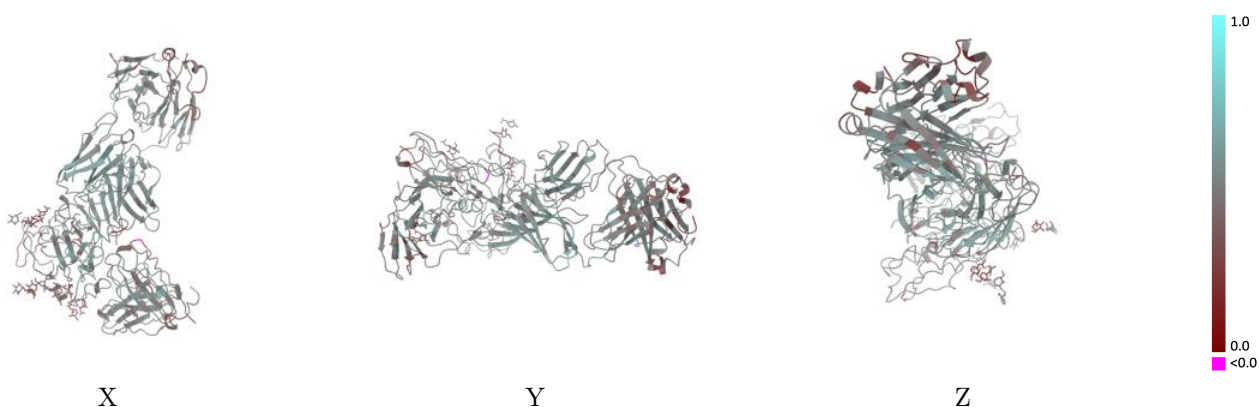
9 Map-model fit [i](#)

This section contains information regarding the fit between EMDB map EMD-41275 and PDB model 8THZ. Per-residue inclusion information can be found in section 3 on page 7.

9.1 Map-model overlay [i](#)

This section was not generated.

9.2 Q-score mapped to coordinate model [i](#)

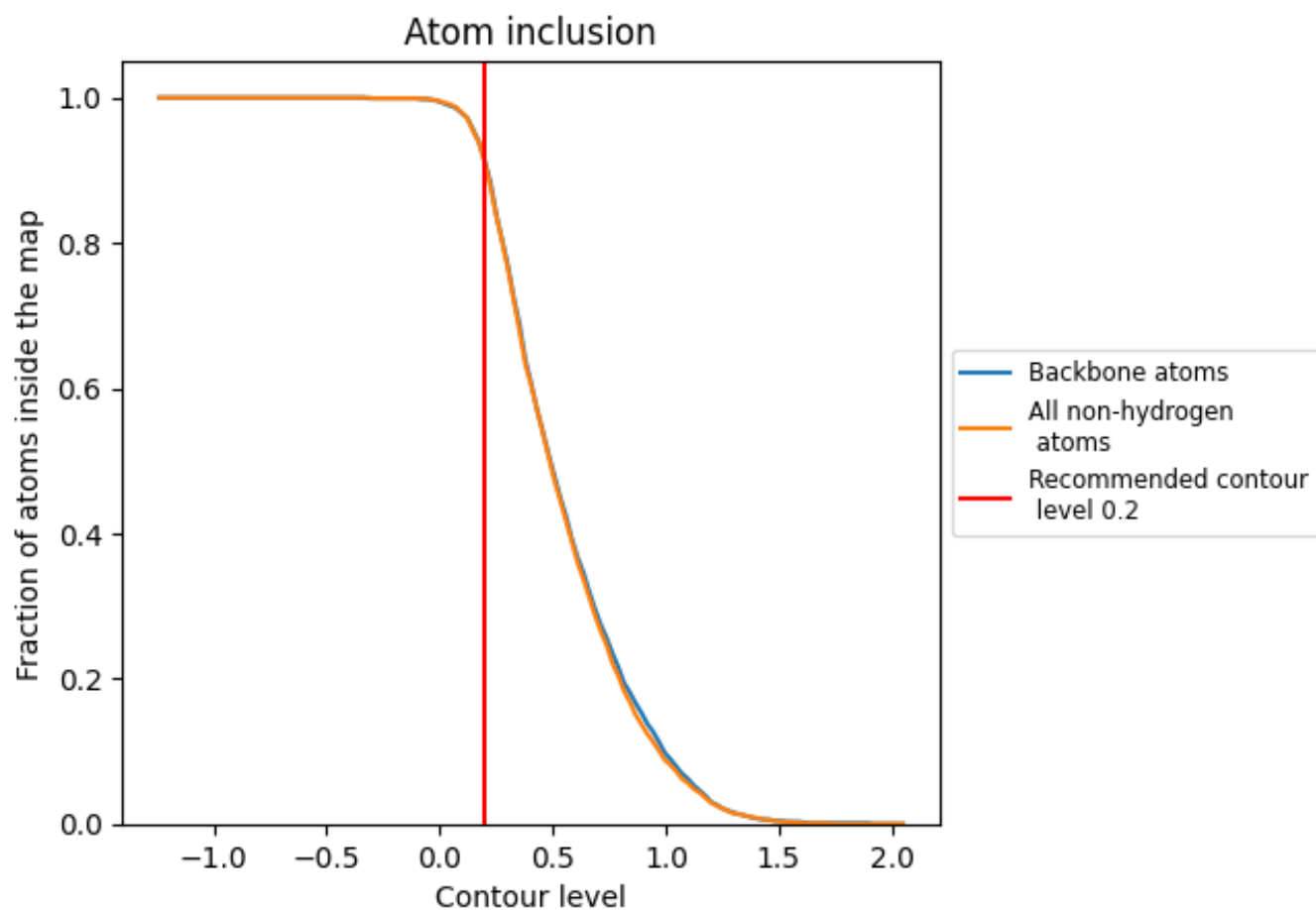


The images above show the model with each residue coloured according to its Q-score. This shows their resolvability in the map with higher Q-score values reflecting better resolvability. Please note: Q-score is calculating the resolvability of atoms, and thus high values are only expected at resolutions at which atoms can be resolved. Low Q-score values may therefore be expected for many entries.

9.3 Atom inclusion mapped to coordinate model [i](#)

This section was not generated.























9.4 Atom inclusion [i](#)



At the recommended contour level, 91% of all backbone atoms, 91% of all non-hydrogen atoms, are inside the map.

9.5 Map-model fit summary

The table lists the average atom inclusion at the recommended contour level (0.2) and Q-score for the entire model and for each chain.

Chain	Atom inclusion	Q-score
All	 0.9110	 0.4820
A	 0.9280	 0.4820
B	 0.5000	 0.2490
C	 0.9640	 0.3820
D	 0.7200	 0.3060
E	 0.8960	 0.4570
F	 0.9380	 0.4850
G	 0.7870	 0.3580
H	 0.9150	 0.4920
L	 0.9240	 0.5020
N	 0.7140	 0.3190

