



# Full wwPDB X-ray Structure Validation Report ⓘ

Mar 5, 2026 – 05:26 AM UTC

PDB ID : 4TKV / pdb\_00004tkv  
Title : CO-bound Nitrogenase MoFe-protein from *A. vinelandii*  
Authors : Spatzal, T.; Perez, K.; Einsle, O.; Howard, J.B.; Rees, D.C.  
Deposited on : 2014-05-28  
Resolution : 1.50 Å(reported)

This is a Full wwPDB X-ray Structure Validation Report for a publicly released PDB entry.

We welcome your comments at [validation@mail.wwpdb.org](mailto:validation@mail.wwpdb.org)

A user guide is available at

<https://www.wwpdb.org/validation/2017/XrayValidationReportHelp>

with specific help available everywhere you see the ⓘ symbol.

The types of validation reports are described at

<http://www.wwpdb.org/validation/2017/FAQs#types>.

---

The following versions of software and data (see [references ⓘ](#)) were used in the production of this report:

MolProbity : 4-5-2 with Phenix2.0  
Mogul : 2022.3.0, CSD as543be (2022)  
Xtriage (Phenix) : 2.0  
EDS : 3.0  
Buster-report : wwPDB partial adaption of 1.1.7 (2018)  
Percentile statistics : 20250101.v01 (using entries in the PDB archive January 1st 2025)  
CCP4 : 9.0.010 (Gargrove)  
Density-Fitness : 1.0.12  
Ideal geometry (proteins) : Engh & Huber (2001)  
Ideal geometry (DNA, RNA) : Parkinson et al. (1996)  
Validation Pipeline (wwPDB-VP) : 2.49

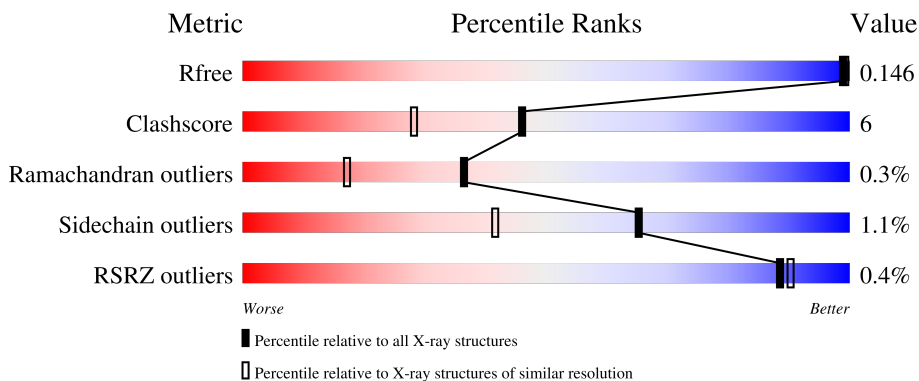
# 1 Overall quality at a glance

The following experimental techniques were used to determine the structure:

*X-RAY DIFFRACTION*

The reported resolution of this entry is 1.50 Å.

Percentile scores (ranging between 0-100) for global validation metrics of the entry are shown in the following graphic. The table shows the number of entries on which the scores are based.



Metric	Whole archive (#Entries)	Similar resolution (#Entries, resolution range(Å))
$R_{free}$	180053	4037 (1.50-1.50)
Clashscore	190562	4235 (1.50-1.50)
Ramachandran outliers	187476	4153 (1.50-1.50)
Sidechain outliers	187428	4150 (1.50-1.50)
RSRZ outliers	180081	4039 (1.50-1.50)

The table below summarises the geometric issues observed across the polymeric chains and their fit to the electron density. The red, orange, yellow and green segments of the lower bar indicate the fraction of residues that contain outliers for  $\geq 3$ , 2, 1 and 0 types of geometric quality criteria respectively. A grey segment represents the fraction of residues that are not modelled. The numeric value for each fraction is indicated below the corresponding segment, with a dot representing fractions  $\leq 5\%$ . The upper red bar (where present) indicates the fraction of residues that have poor fit to the electron density. The numeric value is given above the bar.

Mol	Chain	Length	Quality of chain
1	A	492	86% 10% . .
1	C	492	88% 9% .
2	B	523	91% 8%
2	D	523	89% 10%

The following table lists non-polymeric compounds, carbohydrate monomers and non-standard

residues in protein, DNA, RNA chains that are outliers for geometric or electron-density-fit criteria:

Mol	Type	Chain	Res	Chirality	Geometry	Clashes	Electron density
6	CMO	A	505	-	-	X	-
6	CMO	B	604	-	-	X	-
6	CMO	C	505	-	-	X	-
6	CMO	D	604	-	-	X	-

## 2 Entry composition

There are 9 unique types of molecules in this entry. The entry contains 18221 atoms, of which 0 are hydrogens and 0 are deuteriums.

In the tables below, the ZeroOcc column contains the number of atoms modelled with zero occupancy, the AltConf column contains the number of residues with at least one atom in alternate conformation and the Trace column contains the number of residues modelled with at most 2 atoms.

- Molecule 1 is a protein called Nitrogenase molybdenum-iron protein alpha chain.

Mol	Chain	Residues	Atoms					ZeroOcc	AltConf	Trace
			Total	C	N	O	S			
1	A	477	3914	2482	678	726	28	0	15	0
1	C	477	3878	2461	664	725	28	0	12	0

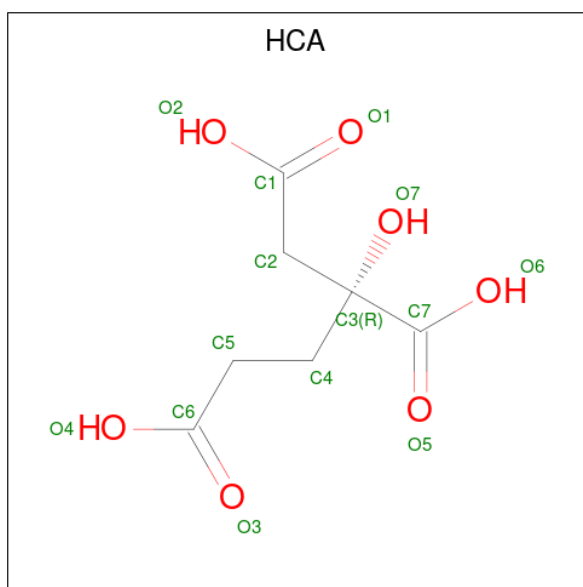
There are 2 discrepancies between the modelled and reference sequences:

Chain	Residue	Modelled	Actual	Comment	Reference
A	440	GLN	GLU	conflict	UNP P07328
C	440	GLN	GLU	conflict	UNP P07328

- Molecule 2 is a protein called Nitrogenase molybdenum-iron protein beta chain.

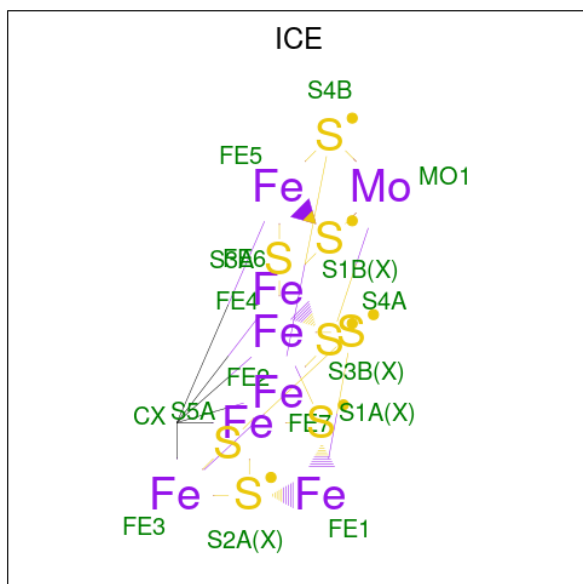
Mol	Chain	Residues	Atoms					ZeroOcc	AltConf	Trace
			Total	C	N	O	S			
2	B	522	4301	2739	728	803	31	0	17	0
2	D	522	4344	2767	732	812	33	0	19	0

- Molecule 3 is 3-HYDROXY-3-CARBOXY-ADIPIC ACID (CCD ID: HCA) (formula: C<sub>7</sub>H<sub>10</sub>O<sub>7</sub>).



Mol	Chain	Residues	Atoms				ZeroOcc	AltConf
3	A	1	Total	C	O	0	0	
			14	7	7			
3	C	1	Total	C	O	0	0	
			14	7	7			

- Molecule 4 is iron-sulfur-molybdenum cluster with interstitial carbon (CCD ID: ICE) (formula:  $\text{CFe}_7\text{MoS}_8$ ).



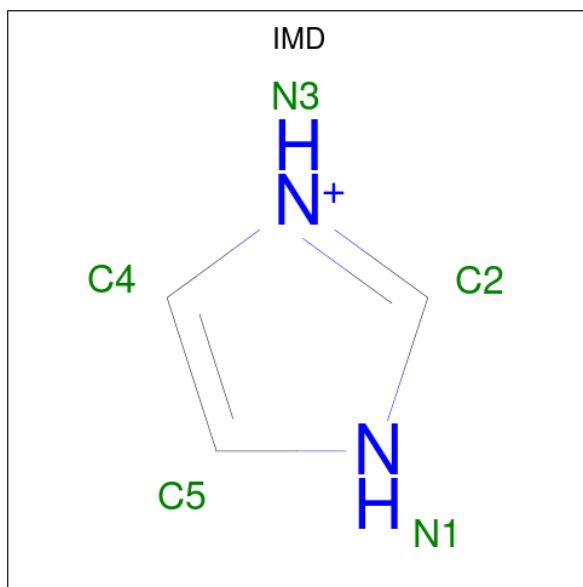
Mol	Chain	Residues	Atoms					ZeroOcc	AltConf
4	A	1	Total	C	Fe	Mo	S	0	0
			17	1	7	1	8		

*Continued on next page...*

Continued from previous page...

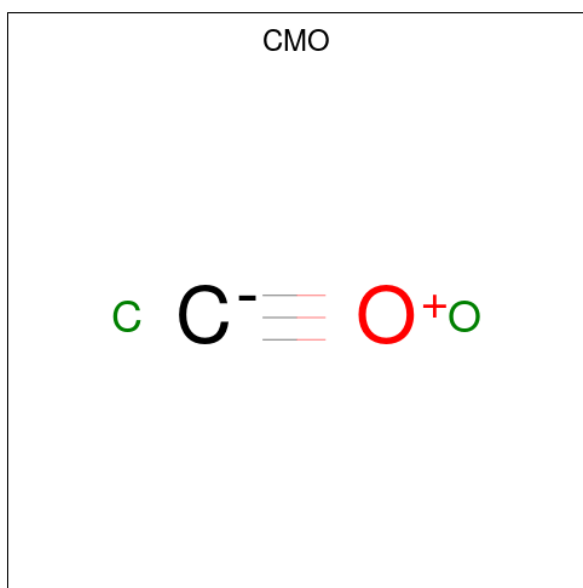
Mol	Chain	Residues	Atoms	ZeroOcc	AltConf
4	A	1	Total S 1 1	0	0
4	C	1	Total C Fe Mo S 17 1 7 1 8	0	0
4	C	1	Total S 1 1	0	0

- Molecule 5 is IMIDAZOLE (CCD ID: IMD) (formula: C<sub>3</sub>H<sub>5</sub>N<sub>2</sub>).



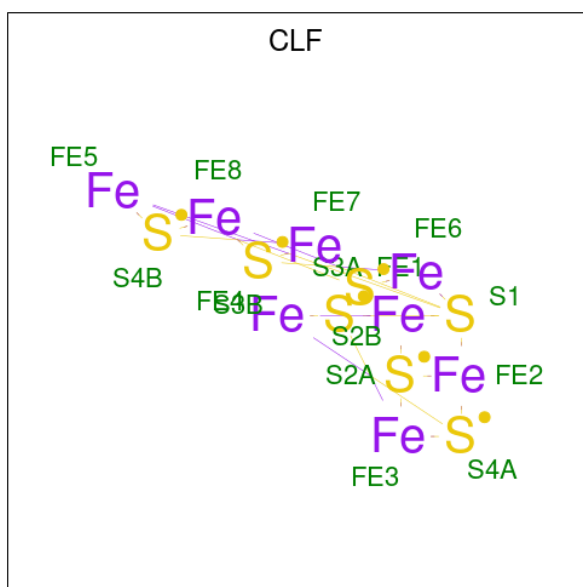
Mol	Chain	Residues	Atoms	ZeroOcc	AltConf
5	A	1	Total C N 5 3 2	0	0
5	B	1	Total C N 5 3 2	0	0
5	B	1	Total C N 5 3 2	0	0
5	B	1	Total C N 5 3 2	0	0
5	C	1	Total C N 5 3 2	0	0
5	D	1	Total C N 5 3 2	0	0
5	D	1	Total C N 5 3 2	0	0
5	D	1	Total C N 5 3 2	0	0

- Molecule 6 is CARBON MONOXIDE (CCD ID: CMO) (formula: CO).



Mol	Chain	Residues	Atoms			ZeroOcc	AltConf
6	A	1	Total	C	O	0	0
			2	1	1		
6	A	1	Total	C	O	0	0
			2	1	1		
6	B	1	Total	C	O	0	0
			2	1	1		
6	C	1	Total	C	O	0	0
			2	1	1		
6	C	1	Total	C	O	0	0
			2	1	1		
6	D	1	Total	C	O	0	0
			2	1	1		

- Molecule 7 is FE(8)-S(7) CLUSTER (CCD ID: CLF) (formula: Fe<sub>8</sub>S<sub>7</sub>).



Mol	Chain	Residues	Atoms	ZeroOcc	AltConf
7	A	1	Total Fe S 15 8 7	0	0
7	C	1	Total Fe S 15 8 7	0	0

- Molecule 8 is FE (II) ION (CCD ID: FE2) (formula: Fe).

Mol	Chain	Residues	Atoms	ZeroOcc	AltConf
8	B	2	Total Fe 2 2	0	0

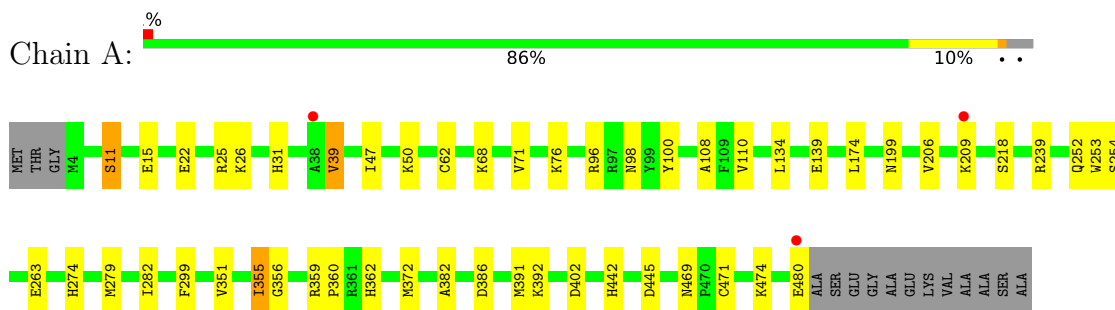
- Molecule 9 is water.

Mol	Chain	Residues	Atoms	ZeroOcc	AltConf
9	A	351	Total O 351 351	0	0
9	B	466	Total O 466 466	0	0
9	C	362	Total O 362 362	0	0
9	D	457	Total O 457 457	0	0

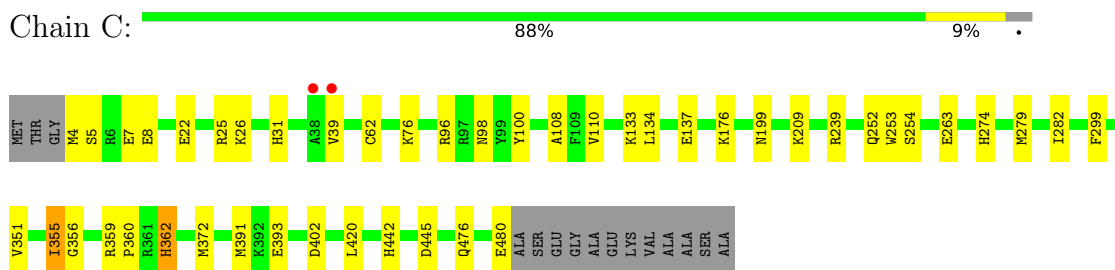
### 3 Residue-property plots [i](#)

These plots are drawn for all protein, RNA, DNA and oligosaccharide chains in the entry. The first graphic for a chain summarises the proportions of the various outlier classes displayed in the second graphic. The second graphic shows the sequence view annotated by issues in geometry and electron density. Residues are color-coded according to the number of geometric quality criteria for which they contain at least one outlier: green = 0, yellow = 1, orange = 2 and red = 3 or more. A red dot above a residue indicates a poor fit to the electron density ( $RSRZ > 2$ ). Stretches of 2 or more consecutive residues without any outlier are shown as a green connector. Residues present in the sample, but not in the model, are shown in grey.

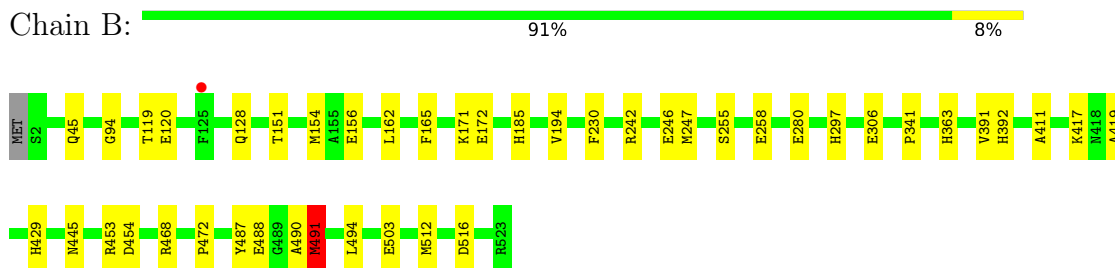
- Molecule 1: Nitrogenase molybdenum-iron protein alpha chain



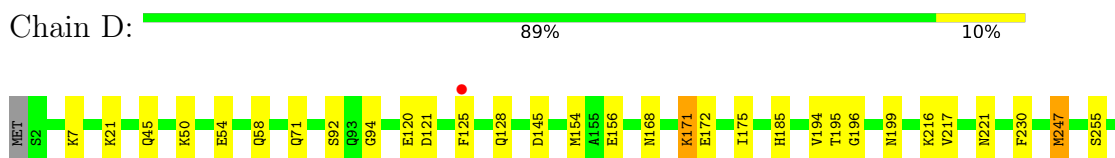
- Molecule 1: Nitrogenase molybdenum-iron protein alpha chain



- Molecule 2: Nitrogenase molybdenum-iron protein beta chain



- Molecule 2: Nitrogenase molybdenum-iron protein beta chain





## 4 Data and refinement statistics

Property	Value	Source
Space group	P 1 21 1	Depositor
Cell constants a, b, c, $\alpha$ , $\beta$ , $\gamma$	81.17Å 130.62Å 107.00Å 90.00° 110.65° 90.00°	Depositor
Resolution (Å)	38.74 – 1.50 38.74 – 1.50	Depositor EDS
% Data completeness (in resolution range)	98.1 (38.74-1.50) 98.1 (38.74-1.50)	Depositor EDS
$R_{merge}$	(Not available)	Depositor
$R_{sym}$	(Not available)	Depositor
$\langle I/\sigma(I) \rangle$ <sup>1</sup>	1.73 (at 1.50Å)	Xtrriage
Refinement program	REFMAC 5.8.0049	Depositor
R, $R_{free}$	0.138 , 0.154 0.146 , 0.146	Depositor DCC
$R_{free}$ test set	16175 reflections (4.87%)	wwPDB-VP
Wilson B-factor (Å <sup>2</sup> )	13.0	Xtrriage
Anisotropy	0.694	Xtrriage
Bulk solvent $k_{sol}$ (e/Å <sup>3</sup> ), $B_{sol}$ (Å <sup>2</sup> )	0.33 , 33.9	EDS
L-test for twinning <sup>2</sup>	$\langle  L  \rangle = 0.49$ , $\langle L^2 \rangle = 0.32$	Xtrriage
Estimated twinning fraction	0.018 for h,-k,-h-l	Xtrriage
$F_o, F_c$ correlation	0.97	EDS
Total number of atoms	18221	wwPDB-VP
Average B, all atoms (Å <sup>2</sup> )	16.0	wwPDB-VP

Xtrriage's analysis on translational NCS is as follows: *The largest off-origin peak in the Patterson function is 3.23% of the height of the origin peak. No significant pseudotranslation is detected.*

<sup>1</sup>Intensities estimated from amplitudes.

<sup>2</sup>Theoretical values of  $\langle |L| \rangle$ ,  $\langle L^2 \rangle$  for acentric reflections are 0.5, 0.333 respectively for untwinned datasets, and 0.375, 0.2 for perfectly twinned datasets.

## 5 Model quality [i](#)

### 5.1 Standard geometry [i](#)

Bond lengths and bond angles in the following residue types are not validated in this section: ICE, CLF, CMO, IMD, FE2, HCA

The Z score for a bond length (or angle) is the number of standard deviations the observed value is removed from the expected value. A bond length (or angle) with  $|Z| > 5$  is considered an outlier worth inspection. RMSZ is the root-mean-square of all Z scores of the bond lengths (or angles).

Mol	Chain	Bond lengths		Bond angles	
		RMSZ	# Z  >5	RMSZ	# Z  >5
1	A	0.70	0/4001	0.89	2/5385 (0.0%)
1	C	0.70	0/3966	0.88	1/5346 (0.0%)
2	B	0.68	0/4406	0.84	0/5949
2	D	0.68	0/4450	0.84	0/6006
All	All	0.69	0/16823	0.86	3/22686 (0.0%)

Chiral center outliers are detected by calculating the chiral volume of a chiral center and verifying if the center is modelled as a planar moiety or with the opposite hand. A planarity outlier is detected by checking planarity of atoms in a peptide group, atoms in a mainchain group or atoms of a sidechain that are expected to be planar.

Mol	Chain	#Chirality outliers	#Planarity outliers
2	B	0	1

There are no bond length outliers.

All (3) bond angle outliers are listed below:

Mol	Chain	Res	Type	Atoms	Z	Observed( $^{\circ}$ )	Ideal( $^{\circ}$ )
1	C	39	VAL	N-CA-C	6.61	117.56	109.30
1	A	39	VAL	N-CA-C	5.58	116.90	109.37
1	A	71	VAL	N-CA-C	5.10	115.77	110.82

There are no chirality outliers.

All (1) planarity outliers are listed below:

Mol	Chain	Res	Type	Group
2	B	491[B]	MET	Mainchain

## 5.2 Too-close contacts [i](#)

In the following table, the Non-H and H(model) columns list the number of non-hydrogen atoms and hydrogen atoms in the chain respectively. The H(added) column lists the number of hydrogen atoms added and optimized by MolProbity. The Clashes column lists the number of clashes within the asymmetric unit, whereas Symm-Clashes lists symmetry-related clashes.

Mol	Chain	Non-H	H(model)	H(added)	Clashes	Symm-Clashes
1	A	3914	0	3854	42	0
1	C	3878	0	3794	41	0
2	B	4301	0	4185	57	0
2	D	4344	0	4230	57	0
3	A	14	0	6	2	0
3	C	14	0	6	2	0
4	A	18	0	0	1	0
4	C	18	0	0	1	0
5	A	5	0	5	0	0
5	B	15	0	15	2	0
5	C	5	0	5	2	0
5	D	15	0	15	2	0
6	A	4	0	0	2	0
6	B	2	0	0	3	0
6	C	4	0	0	2	0
6	D	2	0	0	2	0
7	A	15	0	0	0	0
7	C	15	0	0	0	0
8	B	2	0	0	0	0
9	A	351	0	0	4	0
9	B	466	0	0	13	0
9	C	362	0	0	10	0
9	D	457	0	0	13	0
All	All	18221	0	16115	189	0

The all-atom clashscore is defined as the number of clashes found per 1000 atoms (including hydrogen atoms). The all-atom clashscore for this structure is 6.

All (189) close contacts within the same asymmetric unit are listed below, sorted by their clash magnitude.

Atom-1	Atom-2	Interatomic distance (Å)	Clash overlap (Å)
1:C:22:GLU:OE1	1:C:26:LYS:CE	1.69	1.41
2:D:125:PHE:HZ	9:D:1107:HOH:O	1.03	1.35
2:B:453[B]:ARG:HD3	2:D:512[B]:MET:CG	1.62	1.29
1:C:22:GLU:CD	1:C:26:LYS:HE3	1.77	1.10

*Continued on next page...*

*Continued from previous page...*

Atom-1	Atom-2	Interatomic distance (Å)	Clash overlap (Å)
2:B:45[A]:GLN:NE2	9:B:702:HOH:O	1.86	1.07
2:B:453[B]:ARG:HD3	2:D:512[B]:MET:HG2	1.31	1.05
2:B:512[B]:MET:HB2	2:D:453[B]:ARG:HD3	1.37	1.04
1:C:22:GLU:OE1	1:C:26:LYS:HE3	0.83	1.00
2:D:303:LYS:HE2	9:D:1078:HOH:O	1.62	0.97
2:B:453[B]:ARG:HD3	2:D:512[B]:MET:HG3	1.43	0.97
2:D:125:PHE:CZ	9:D:1107:HOH:O	1.88	0.96
2:B:453[B]:ARG:CD	2:D:512[B]:MET:CG	2.42	0.96
2:B:280:GLU:OE1	5:B:601:IMD:H5	1.67	0.95
2:B:453[B]:ARG:CD	2:D:512[B]:MET:HG3	1.97	0.94
2:B:171:LYS:NZ	2:B:172:GLU:OE2	2.09	0.84
1:A:11:SER:O	1:A:15[A]:GLU:HG3	1.79	0.83
2:D:499:ASN:O	2:D:503[A]:GLU:HG3	1.80	0.80
2:B:512[B]:MET:HB2	2:D:453[B]:ARG:CD	2.11	0.79
5:C:503:IMD:H4	9:C:605:HOH:O	1.82	0.79
6:D:604:CMO:O	9:D:701:HOH:O	2.01	0.78
2:D:426:ASP:H	2:D:429:HIS:HD2	1.30	0.77
1:C:274:HIS:HE1	1:C:299:PHE:H	1.32	0.77
5:D:601:IMD:H4	9:D:748:HOH:O	1.85	0.77
6:B:604:CMO:O	9:B:703:HOH:O	2.04	0.76
2:B:490:ALA:O	2:B:491[B]:MET:O	2.04	0.75
2:D:45[B]:GLN:HG2	9:D:944:HOH:O	1.86	0.75
1:A:274:HIS:HE1	1:A:299:PHE:H	1.35	0.75
2:B:45[B]:GLN:NE2	9:B:706:HOH:O	2.21	0.73
1:C:209[A]:LYS:HE3	9:C:859:HOH:O	1.88	0.72
1:A:480[B]:GLU:O	9:A:602:HOH:O	2.09	0.71
2:B:503[B]:GLU:CD	9:B:709:HOH:O	2.34	0.70
2:D:230:PHE:H	2:D:297:HIS:HE1	1.40	0.69
2:D:92:SER:OG	2:D:154[B]:MET:HG2	1.93	0.69
2:B:453[B]:ARG:NH2	9:B:707:HOH:O	2.22	0.68
2:D:230:PHE:H	2:D:297:HIS:CE1	2.11	0.68
2:B:306:GLU:OE1	9:B:704:HOH:O	2.10	0.68
1:C:391:MET:CE	9:C:609:HOH:O	2.41	0.68
2:D:468:ARG:HH11	6:D:604:CMO:C	2.05	0.68
2:B:230:PHE:H	2:B:297:HIS:HE1	1.39	0.68
2:D:120:GLU:OE2	5:D:603:IMD:H4	1.94	0.68
2:D:21[A]:LYS:HG2	9:D:710:HOH:O	1.91	0.67
2:D:279[A]:GLU:OE2	9:D:702:HOH:O	2.12	0.67
2:B:230:PHE:H	2:B:297:HIS:CE1	2.13	0.66
2:B:453[B]:ARG:HD2	2:D:512[B]:MET:HG3	1.76	0.66
2:D:71:GLN:HE22	2:D:199:ASN:HD22	1.44	0.66

*Continued on next page...*

*Continued from previous page...*

Atom-1	Atom-2	Interatomic distance (Å)	Clash overlap (Å)
2:D:453[B]:ARG:NH2	9:D:704:HOH:O	2.29	0.65
1:C:239:ARG:HH11	1:C:252:GLN:HE21	1.44	0.64
1:C:31:HIS:HE1	9:C:603:HOH:O	1.79	0.64
6:C:505:CMO:C	9:D:704:HOH:O	2.45	0.64
2:B:468:ARG:HH11	6:B:604:CMO:C	2.11	0.64
1:A:15[B]:GLU:HG2	1:A:15[B]:GLU:O	1.97	0.64
1:C:351[B]:VAL:HG12	1:C:420:LEU:HB3	1.78	0.64
2:B:242:ARG:HD3	2:B:246[B]:GLU:OE1	1.98	0.63
1:A:31:HIS:HD2	1:A:402:ASP:OD2	1.81	0.63
6:A:505:CMO:C	9:B:707:HOH:O	2.47	0.63
1:A:25[B]:ARG:NH1	1:A:26:LYS:HG2	2.15	0.62
5:C:503:IMD:H2	9:C:831:HOH:O	1.99	0.62
1:C:22:GLU:OE1	1:C:26:LYS:HE2	1.93	0.61
1:A:31:HIS:HE1	9:A:608:HOH:O	1.82	0.61
1:A:239:ARG:HH11	1:A:252:GLN:HE21	1.48	0.60
2:B:453[B]:ARG:HD2	2:B:453[B]:ARG:C	2.26	0.60
2:D:297:HIS:HD2	9:D:719:HOH:O	1.85	0.59
1:C:31:HIS:HD2	1:C:402:ASP:OD2	1.84	0.59
1:A:206:VAL:O	1:A:209[B]:LYS:HG2	2.03	0.59
2:B:297:HIS:HD2	9:B:759:HOH:O	1.85	0.59
1:A:392:LYS:HB3	1:A:392:LYS:HZ2	1.66	0.58
2:D:50:LYS:CE	2:D:54[B]:GLU:OE1	2.52	0.58
2:D:145:ASP:OD2	9:D:703:HOH:O	2.17	0.58
2:B:454:ASP:HA	2:D:512[B]:MET:HE2	1.87	0.57
2:B:45[B]:GLN:NE2	9:B:705:HOH:O	2.12	0.57
1:C:391:MET:HE1	9:C:609:HOH:O	2.01	0.56
1:C:199:ASN:HD22	1:C:282:ILE:H	1.52	0.56
2:D:171:LYS:NZ	2:D:172:GLU:OE2	2.38	0.56
2:D:185:HIS:HE1	9:D:899:HOH:O	1.87	0.56
1:A:469:ASN:HD22	1:A:471:CYS:H	1.54	0.56
1:C:199:ASN:HD21	1:C:279[A]:MET:HA	1.70	0.56
1:C:351[B]:VAL:CG1	1:C:372:MET:HE2	2.36	0.56
2:D:426:ASP:H	2:D:429:HIS:CD2	2.19	0.56
2:D:247[A]:MET:HG3	2:D:341:PRO:HD3	1.86	0.55
1:A:22:GLU:HG3	1:A:26:LYS:HE3	1.89	0.54
1:A:239:ARG:HD2	1:A:252:GLN:NE2	2.24	0.53
1:A:22:GLU:OE2	1:A:25[B]:ARG:NE	2.41	0.53
2:B:512[B]:MET:SD	2:D:453[B]:ARG:NE	2.82	0.52
1:A:351[B]:VAL:CG2	1:A:372:MET:HE2	2.40	0.52
1:C:25:ARG:HD3	9:C:723:HOH:O	2.10	0.52
2:B:156:GLU:OE2	2:B:185:HIS:HD2	1.92	0.52

*Continued on next page...*

*Continued from previous page...*

Atom-1	Atom-2	Interatomic distance (Å)	Clash overlap (Å)
1:A:199:ASN:HD21	1:A:279[A]:MET:HA	1.75	0.51
1:A:209[A]:LYS:NZ	1:A:263:GLU:OE2	2.39	0.51
1:A:199:ASN:HD22	1:A:282:ILE:H	1.59	0.51
2:B:120:GLU:OE2	5:B:603:IMD:H2	2.10	0.51
2:B:185:HIS:HE1	9:B:933:HOH:O	1.92	0.50
2:B:512[B]:MET:CB	2:D:453[B]:ARG:HD3	2.26	0.50
1:A:134:LEU:C	1:A:134:LEU:HD23	2.37	0.50
1:C:22:GLU:CG	1:C:26:LYS:HE3	2.42	0.50
2:D:194:VAL:HB	2:D:297:HIS:CG	2.46	0.50
1:C:239:ARG:HD2	1:C:252:GLN:NE2	2.27	0.49
2:B:487:TYR:O	2:B:491[B]:MET:HG3	2.13	0.49
2:B:453[B]:ARG:CD	2:D:512[B]:MET:SD	3.00	0.49
2:B:490:ALA:O	2:B:491[B]:MET:C	2.54	0.49
1:C:4:MET:HA	1:C:8:GLU:OE1	2.12	0.49
1:C:96:ARG:HH11	1:C:98:ASN:HD22	1.58	0.48
1:A:218:SER:HB2	9:A:611:HOH:O	2.12	0.48
1:C:476:GLN:OE1	1:C:480:GLU:HB2	2.13	0.48
1:A:442:HIS:HB3	3:A:501:HCA:O6	2.13	0.48
6:B:604:CMO:C	9:B:703:HOH:O	2.56	0.48
1:C:442:HIS:HB3	3:C:501:HCA:O5	2.14	0.48
1:C:100:TYR:CE1	1:C:110:VAL:HB	2.49	0.48
2:B:453[B]:ARG:HD2	2:B:453[B]:ARG:O	2.14	0.48
2:D:156:GLU:OE2	2:D:185:HIS:HD2	1.97	0.48
2:D:45[B]:GLN:HE22	2:D:458[B]:LYS:HE3	1.79	0.48
1:C:362:HIS:HD2	9:C:890:HOH:O	1.96	0.47
1:A:139:GLU:HG3	1:A:174:LEU:HD13	1.96	0.47
1:C:76:LYS:O	1:C:108:ALA:HA	2.14	0.47
1:A:96:ARG:HH11	1:A:98:ASN:HD22	1.62	0.47
2:D:50:LYS:HD2	2:D:54[B]:GLU:OE1	2.15	0.47
1:C:134:LEU:C	1:C:134:LEU:HD23	2.40	0.47
2:D:50:LYS:CD	2:D:54[B]:GLU:OE1	2.63	0.47
2:B:363:HIS:HD2	9:B:1099:HOH:O	1.98	0.46
1:A:442:HIS:CG	3:A:501:HCA:H52	2.51	0.46
1:A:274:HIS:CE1	1:A:299:PHE:H	2.23	0.46
2:B:128:GLN:HE22	2:B:165:PHE:HA	1.82	0.45
1:A:62:CYS:HB3	2:B:94:GLY:HA3	1.97	0.45
2:D:128:GLN:NE2	2:D:168:ASN:HD22	2.14	0.45
2:D:247[A]:MET:HG3	2:D:341:PRO:CD	2.45	0.45
1:A:253:TRP:HA	1:A:254:SER:HA	1.81	0.45
1:C:253:TRP:HA	1:C:254:SER:HA	1.77	0.45
2:B:194:VAL:HB	2:B:297:HIS:CG	2.51	0.45

*Continued on next page...*

*Continued from previous page...*

Atom-1	Atom-2	Interatomic distance (Å)	Clash overlap (Å)
2:B:247[B]:MET:HG3	2:B:341:PRO:HD3	1.99	0.45
2:B:151:THR:HG23	2:B:162:LEU:HD11	1.99	0.45
2:B:488:GLU:O	2:B:491[B]:MET:HB2	2.16	0.45
1:A:25[B]:ARG:NH1	1:A:26:LYS:CG	2.80	0.44
2:B:445:ASN:HB2	2:B:472:PRO:O	2.17	0.44
2:B:391[B]:VAL:HG12	2:B:392:HIS:CE1	2.52	0.44
1:C:393:GLU:OE1	9:C:601:HOH:O	2.20	0.44
6:C:505:CMO:C	2:D:453[A]:ARG:NH1	2.80	0.44
2:D:247[B]:MET:HE1	2:D:329:LEU:HD22	1.98	0.44
2:B:411:ALA:HB3	9:B:1081:HOH:O	2.18	0.44
2:B:453[B]:ARG:CD	2:B:453[B]:ARG:C	2.90	0.44
2:B:512[B]:MET:HA	2:B:516:ASP:CG	2.42	0.44
2:D:494:LEU:HD23	2:D:494:LEU:C	2.43	0.44
1:A:22:GLU:OE1	1:A:25[A]:ARG:NH1	2.45	0.44
1:A:100:TYR:CE1	1:A:110:VAL:HB	2.53	0.43
1:A:274:HIS:HD2	9:A:846:HOH:O	2.01	0.43
1:C:199:ASN:HD22	1:C:282:ILE:N	2.16	0.43
1:A:474:LYS:HB3	2:D:322:LEU:HD21	1.99	0.43
1:A:47:ILE:HG23	1:A:50:LYS:HE2	2.00	0.43
1:C:351[B]:VAL:HG13	1:C:372:MET:HE2	2.00	0.43
2:B:516:ASP:OD2	2:D:453[B]:ARG:NH2	2.51	0.43
1:C:5:SER:OG	1:C:8:GLU:HG3	2.19	0.43
2:B:119:THR:O	2:B:154:MET:HE1	2.19	0.43
1:C:239:ARG:HH11	1:C:252:GLN:NE2	2.13	0.43
2:B:391[A]:VAL:HA	2:B:419:ALA:HA	2.01	0.43
2:D:453[B]:ARG:O	2:D:454:ASP:C	2.60	0.43
2:B:494:LEU:C	2:B:494:LEU:HD23	2.44	0.42
2:B:247[A]:MET:HE2	2:B:247[A]:MET:HB2	1.77	0.42
1:C:274:HIS:HD2	9:C:845:HOH:O	2.03	0.42
1:A:76:LYS:O	1:A:108:ALA:HA	2.18	0.42
2:D:217:VAL:H	2:D:286:ASN:ND2	2.17	0.42
2:D:71:GLN:HE22	2:D:199:ASN:ND2	2.15	0.42
1:A:39:VAL:HG12	1:A:391:MET:HE1	2.02	0.42
1:C:274:HIS:CE1	1:C:299:PHE:H	2.22	0.42
1:A:22:GLU:OE2	1:A:25[B]:ARG:NH1	2.48	0.41
1:A:68:LYS:HD3	1:A:68:LYS:C	2.45	0.41
1:C:133:LYS:NZ	1:C:137:GLU:OE2	2.50	0.41
1:A:382:ALA:HB1	1:A:386:ASP:HB2	2.03	0.41
1:A:392:LYS:HB3	1:A:392:LYS:NZ	2.29	0.41
1:C:209[A]:LYS:NZ	1:C:263:GLU:OE2	2.45	0.41
6:A:505:CMO:C	2:B:453[A]:ARG:NH2	2.84	0.41

*Continued on next page...*

Continued from previous page...

Atom-1	Atom-2	Interatomic distance (Å)	Clash overlap (Å)
2:D:445:ASN:HB2	2:D:472:PRO:O	2.20	0.41
2:D:509:THR:O	2:D:516:ASP:HA	2.21	0.41
2:B:512[A]:MET:HE2	2:B:512[A]:MET:HB2	1.81	0.41
1:C:62:CYS:HB3	2:D:94:GLY:HA3	2.03	0.41
1:C:359:ARG:N	1:C:360:PRO:CD	2.83	0.41
1:A:209[B]:LYS:HG2	1:A:209[B]:LYS:H	1.75	0.41
2:B:491[B]:MET:O	2:B:494:LEU:N	2.54	0.41
1:C:356:GLY:HA3	4:C:502:ICE:S1B	2.61	0.41
1:C:442:HIS:CG	3:C:501:HCA:H52	2.55	0.41
2:D:216:LYS:HA	2:D:286:ASN:HD21	1.85	0.41
2:D:221:ASN:OD1	2:D:287:ALA:HA	2.21	0.41
2:D:247[B]:MET:HB2	2:D:247[B]:MET:HE2	1.76	0.41
1:C:199:ASN:HD21	1:C:279[B]:MET:HA	1.85	0.41
2:D:71:GLN:O	2:D:196:GLY:HA3	2.21	0.40
2:D:121:ASP:O	2:D:125:PHE:CE2	2.74	0.40
1:A:359:ARG:N	1:A:360:PRO:CD	2.84	0.40
1:A:356:GLY:HA3	4:A:502:ICE:S1B	2.62	0.40

There are no symmetry-related clashes.

## 5.3 Torsion angles [i](#)

### 5.3.1 Protein backbone [i](#)

In the following table, the Percentiles column shows the percent Ramachandran outliers of the chain as a percentile score with respect to all X-ray entries followed by that with respect to entries of similar resolution.

The Analysed column shows the number of residues for which the backbone conformation was analysed, and the total number of residues.

Mol	Chain	Analysed	Favoured	Allowed	Outliers	Percentiles
1	A	489/492 (99%)	470 (96%)	18 (4%)	1 (0%)	43 22
1	C	487/492 (99%)	468 (96%)	18 (4%)	1 (0%)	43 22
2	B	537/523 (103%)	522 (97%)	12 (2%)	3 (1%)	21 6
2	D	540/523 (103%)	526 (97%)	13 (2%)	1 (0%)	43 22
All	All	2053/2030 (101%)	1986 (97%)	61 (3%)	6 (0%)	36 17

All (6) Ramachandran outliers are listed below:

Mol	Chain	Res	Type
2	B	491[A]	MET
2	B	491[B]	MET
2	B	255	SER
2	D	255	SER
1	A	355	ILE
1	C	355	ILE

### 5.3.2 Protein sidechains [i](#)

In the following table, the Percentiles column shows the percent sidechain outliers of the chain as a percentile score with respect to all X-ray entries followed by that with respect to entries of similar resolution.

The Analysed column shows the number of residues for which the sidechain conformation was analysed, and the total number of residues.

Mol	Chain	Analysed	Rotameric	Outliers	Percentiles	
1	A	420/415 (101%)	416 (99%)	4 (1%)	68	45
1	C	415/415 (100%)	410 (99%)	5 (1%)	63	38
2	B	468/455 (103%)	466 (100%)	2 (0%)	84	71
2	D	472/455 (104%)	464 (98%)	8 (2%)	53	26
All	All	1775/1740 (102%)	1756 (99%)	19 (1%)	65	41

All (19) residues with a non-rotameric sidechain are listed below:

Mol	Chain	Res	Type
1	A	11	SER
1	A	355	ILE
1	A	362	HIS
1	A	445	ASP
2	B	258	GLU
2	B	417	LYS
1	C	7	GLU
1	C	176	LYS
1	C	355	ILE
1	C	362	HIS
1	C	445	ASP
2	D	7	LYS
2	D	58	GLN
2	D	171	LYS
2	D	175	ILE
2	D	195	THR

*Continued on next page...*

*Continued from previous page...*

Mol	Chain	Res	Type
2	D	247[A]	MET
2	D	247[B]	MET
2	D	258	GLU

Sometimes sidechains can be flipped to improve hydrogen bonding and reduce clashes. All (38) such sidechains are listed below:

Mol	Chain	Res	Type
1	A	31	HIS
1	A	98	ASN
1	A	199	ASN
1	A	252	GLN
1	A	271	ASN
1	A	274	HIS
1	A	384	ASN
1	A	468	ASN
1	A	469	ASN
2	B	128	GLN
2	B	130	ASN
2	B	185	HIS
2	B	199	ASN
2	B	225	ASN
2	B	286	ASN
2	B	297	HIS
2	B	363	HIS
2	B	429	HIS
1	C	31	HIS
1	C	98	ASN
1	C	199	ASN
1	C	252	GLN
1	C	271	ASN
1	C	274	HIS
1	C	321	GLN
1	C	362	HIS
1	C	384	ASN
1	C	468	ASN
1	C	476	GLN
2	D	71	GLN
2	D	93	GLN
2	D	128	GLN
2	D	130	ASN
2	D	185	HIS
2	D	225	ASN

*Continued on next page...*

*Continued from previous page...*

Mol	Chain	Res	Type
2	D	286	ASN
2	D	297	HIS
2	D	429	HIS

### 5.3.3 RNA [i](#)

There are no RNA molecules in this entry.

### 5.4 Non-standard residues in protein, DNA, RNA chains [i](#)

There are no non-standard protein/DNA/RNA residues in this entry.

### 5.5 Carbohydrates [i](#)

There are no oligosaccharides in this entry.

### 5.6 Ligand geometry [i](#)

Of 24 ligands modelled in this entry, 2 are modelled with single atom and 2 are monoatomic - leaving 20 for Mogul analysis.

In the following table, the Counts columns list the number of bonds (or angles) for which Mogul statistics could be retrieved, the number of bonds (or angles) that are observed in the model and the number of bonds (or angles) that are defined in the Chemical Component Dictionary. The Link column lists molecule types, if any, to which the group is linked. The Z score for a bond length (or angle) is the number of standard deviations the observed value is removed from the expected value. A bond length (or angle) with  $|Z| > 2$  is considered an outlier worth inspection. RMSZ is the root-mean-square of all Z scores of the bond lengths (or angles).

Mol	Type	Chain	Res	Link	Bond lengths			Bond angles		
					Counts	RMSZ	$\# Z  > 2$	Counts	RMSZ	$\# Z  > 2$
5	IMD	B	602	-	5,5,5	0.38	0	5,5,5	0.68	0
6	CMO	B	604	-	0,1,1	-	-	-		
6	CMO	C	504	4	0,1,1	-	-	-		
5	IMD	B	603	-	5,5,5	0.51	0	5,5,5	0.40	0
6	CMO	D	604	-	0,1,1	-	-	-		
5	IMD	D	603	-	5,5,5	0.45	0	5,5,5	0.35	0
5	IMD	D	602	-	5,5,5	0.53	0	5,5,5	0.43	0
5	IMD	A	503	-	5,5,5	0.53	0	5,5,5	0.41	0
5	IMD	C	503	-	5,5,5	0.46	0	5,5,5	0.40	0
7	CLF	A	507	2,1	0,24,24	-	-	-		

Mol	Type	Chain	Res	Link	Bond lengths			Bond angles		
					Counts	RMSZ	# Z  > 2	Counts	RMSZ	# Z  > 2
3	HCA	A	501	4	13,13,13	1.07	0	15,18,18	1.73	4 (26%)
4	ICE	C	502	3,6,1	4,28,28	1.55	1 (25%)	-		
4	ICE	A	502	3,6,1	4,28,28	1.36	1 (25%)	-		
5	IMD	D	601	-	5,5,5	0.58	0	5,5,5	0.35	0
6	CMO	C	505	-	0,1,1	-	-	-		
5	IMD	B	601	-	5,5,5	0.61	0	5,5,5	0.52	0
3	HCA	C	501	4	13,13,13	1.02	1 (7%)	15,18,18	1.44	3 (20%)
6	CMO	A	505	-	0,1,1	-	-	-		
7	CLF	C	507	2,1	0,24,24	-	-	-		
6	CMO	A	504	4	0,1,1	-	-	-		

In the following table, the Chirals column lists the number of chiral outliers, the number of chiral centers analysed, the number of these observed in the model and the number defined in the Chemical Component Dictionary. Similar counts are reported in the Torsion and Rings columns. '-' means no outliers of that kind were identified.

Mol	Type	Chain	Res	Link	Chirals	Torsions	Rings
5	IMD	D	602	-	-	-	0/1/1/1
5	IMD	A	503	-	-	-	0/1/1/1
5	IMD	B	602	-	-	-	0/1/1/1
5	IMD	B	601	-	-	-	0/1/1/1
3	HCA	C	501	4	-	0/17/17/17	-
5	IMD	B	603	-	-	-	0/1/1/1
5	IMD	C	503	-	-	-	0/1/1/1
7	CLF	A	507	2,1	-	-	0/12/10/10
3	HCA	A	501	4	-	2/17/17/17	-
5	IMD	D	601	-	-	-	0/1/1/1
7	CLF	C	507	2,1	-	-	0/12/10/10
5	IMD	D	603	-	-	-	0/1/1/1

All (3) bond length outliers are listed below:

Mol	Chain	Res	Type	Atoms	Z	Observed(Å)	Ideal(Å)
4	C	502	ICE	S5A-FE7	-2.21	2.19	2.24
4	A	502	ICE	S5A-FE3	-2.03	2.20	2.24
3	C	501	HCA	O5-C7	2.00	1.28	1.22

All (7) bond angle outliers are listed below:

Mol	Chain	Res	Type	Atoms	Z	Observed(°)	Ideal(°)
3	A	501	HCA	O6-C7-C3	3.27	119.41	113.14

Continued on next page...

*Continued from previous page...*

Mol	Chain	Res	Type	Atoms	Z	Observed(°)	Ideal(°)
3	A	501	HCA	C4-C5-C6	3.23	120.25	112.77
3	A	501	HCA	O5-C7-C3	-3.08	116.12	122.09
3	C	501	HCA	C4-C5-C6	2.93	119.57	112.77
3	C	501	HCA	O6-C7-C3	2.77	118.45	113.14
3	C	501	HCA	O7-C3-C7	-2.72	105.10	108.96
3	A	501	HCA	O4-C6-C5	2.10	120.64	114.00

There are no chirality outliers.

All (2) torsion outliers are listed below:

Mol	Chain	Res	Type	Atoms
3	A	501	HCA	O2-C1-C2-C3
3	A	501	HCA	O1-C1-C2-C3

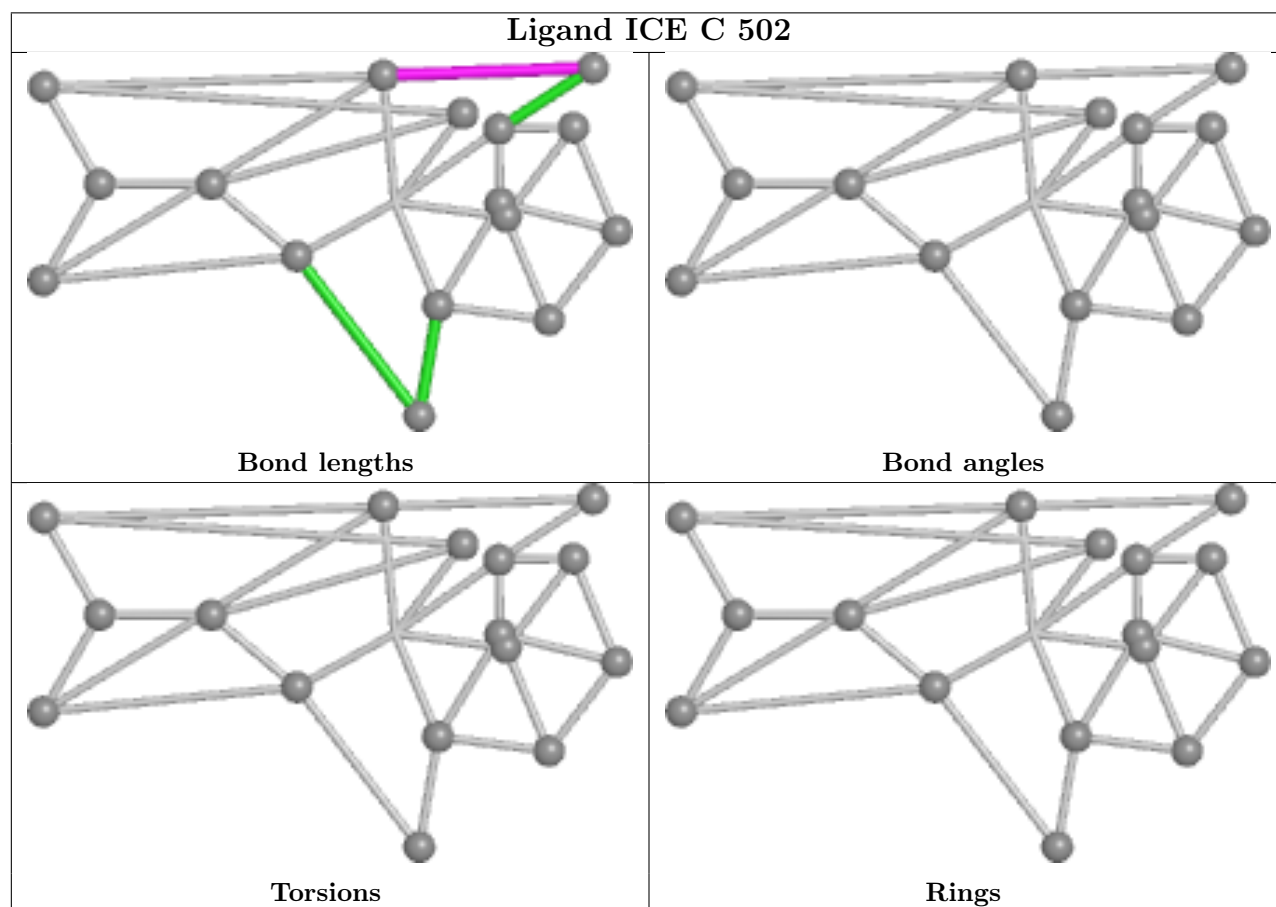
There are no ring outliers.

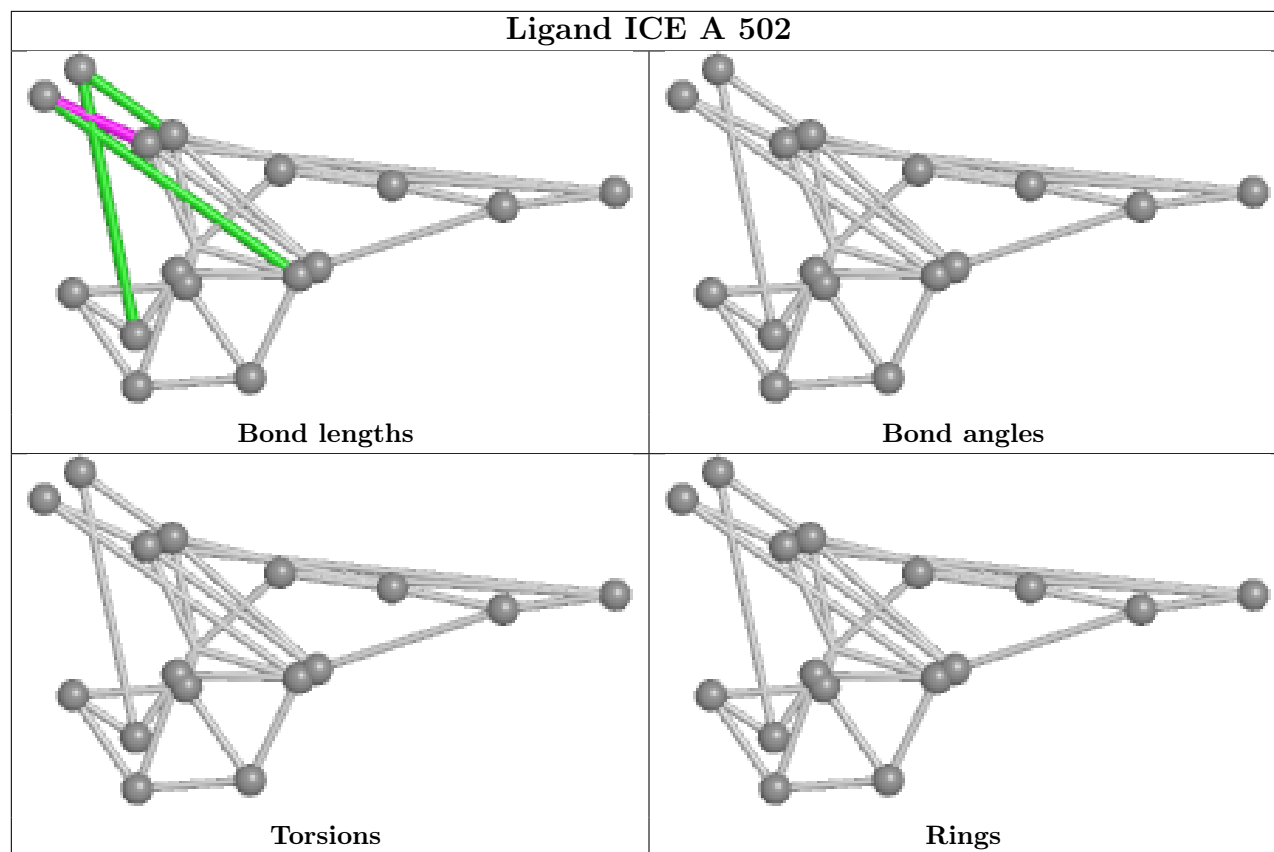
13 monomers are involved in 21 short contacts:

Mol	Chain	Res	Type	Clashes	Symm-Clashes
6	B	604	CMO	3	0
5	B	603	IMD	1	0
6	D	604	CMO	2	0
5	D	603	IMD	1	0
5	C	503	IMD	2	0
3	A	501	HCA	2	0
4	C	502	ICE	1	0
4	A	502	ICE	1	0
5	D	601	IMD	1	0
6	C	505	CMO	2	0
5	B	601	IMD	1	0
3	C	501	HCA	2	0
6	A	505	CMO	2	0

The following is a two-dimensional graphical depiction of Mogul quality analysis of bond lengths, bond angles, torsion angles, and ring geometry for all instances of the Ligand of Interest. In addition, ligands with molecular weight > 250 and outliers as shown on the validation Tables will also be included. For torsion angles, if less than 5% of the Mogul distribution of torsion angles is within 10 degrees of the torsion angle in question, then that torsion angle is considered an outlier. Any bond that is central to one or more torsion angles identified as an outlier by Mogul will be highlighted in the graph. For rings, the root-mean-square deviation (RMSD) between the ring in question and similar rings identified by Mogul is calculated over all ring torsion angles. If the average RMSD is greater than 60 degrees and the minimal RMSD between the ring in question and any Mogul-identified rings is also greater than 60 degrees, then that ring is considered an outlier.

The outliers are highlighted in purple. The color gray indicates Mogul did not find sufficient equivalents in the CSD to analyse the geometry.





## 5.7 Other polymers [i](#)

There are no such residues in this entry.

## 5.8 Polymer linkage issues [i](#)

There are no chain breaks in this entry.

## 6 Fit of model and data [i](#)

### 6.1 Protein, DNA and RNA chains [i](#)

In the following table, the column labelled ‘#RSRZ > 2’ contains the number (and percentage) of RSRZ outliers, followed by percent RSRZ outliers for the chain as percentile scores relative to all X-ray entries and entries of similar resolution. The OWAB column contains the minimum, median, 95<sup>th</sup> percentile and maximum values of the occupancy-weighted average B-factor per residue. The column labelled ‘Q < 0.9’ lists the number of (and percentage) of residues with an average occupancy less than 0.9.

Mol	Chain	Analysed	<RSRZ>	#RSRZ>2	OWAB(Å <sup>2</sup> )	Q<0.9
1	A	477/492 (96%)	-0.51	3 (0%) 85 88	6, 14, 27, 43	20 (4%)
1	C	477/492 (96%)	-0.51	2 (0%) 88 90	6, 14, 27, 37	20 (4%)
2	B	522/523 (99%)	-0.57	1 (0%) 91 92	6, 14, 23, 31	23 (4%)
2	D	522/523 (99%)	-0.57	1 (0%) 91 92	6, 14, 24, 35	23 (4%)
All	All	1998/2030 (98%)	-0.54	7 (0%) 88 90	6, 14, 25, 43	86 (4%)

All (7) RSRZ outliers are listed below:

Mol	Chain	Res	Type	RSRZ
1	C	38	ALA	3.9
2	B	125	PHE	3.7
1	A	38	ALA	3.7
2	D	125	PHE	3.7
1	A	480[A]	GLU	2.8
1	A	209[A]	LYS	2.4
1	C	39	VAL	2.1

### 6.2 Non-standard residues in protein, DNA, RNA chains [i](#)

There are no non-standard protein/DNA/RNA residues in this entry.

### 6.3 Carbohydrates [i](#)

There are no oligosaccharides in this entry.

## 6.4 Ligands

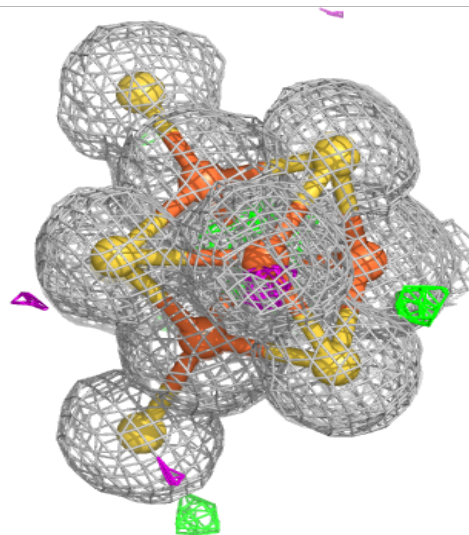
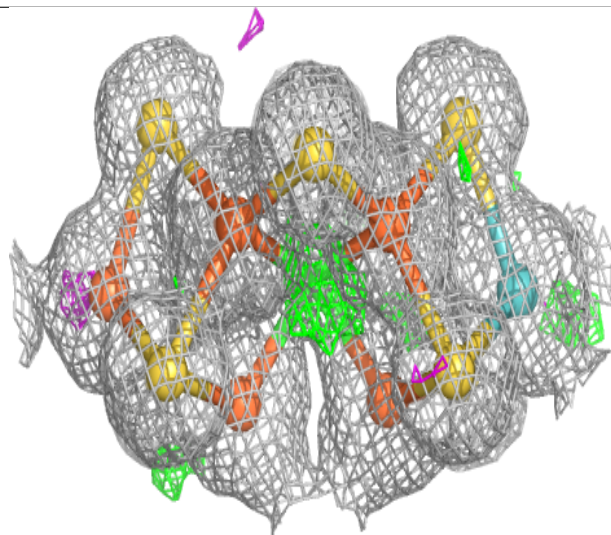
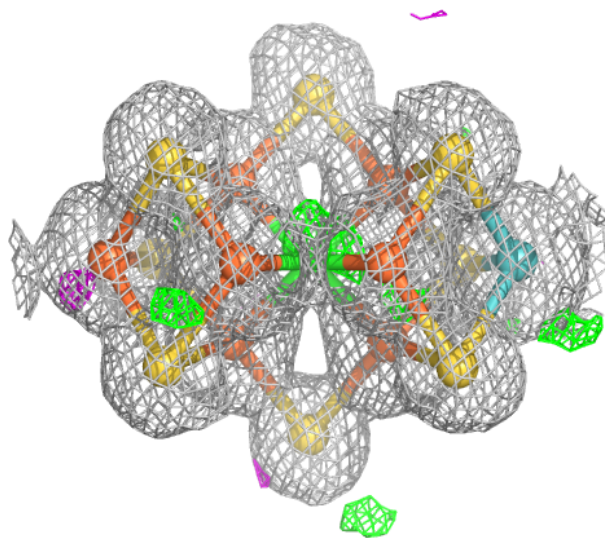
In the following table, the Atoms column lists the number of modelled atoms in the group and the number defined in the chemical component dictionary. The B-factors column lists the minimum, median, 95<sup>th</sup> percentile and maximum values of B factors of atoms in the group. The column labelled 'Q< 0.9' lists the number of atoms with occupancy less than 0.9.

Mol	Type	Chain	Res	Atoms	RSCC	RSR	B-factors(Å <sup>2</sup> )	Q<0.9
6	CMO	A	505	2/2	0.89	0.10	18,18,18,21	2
6	CMO	B	604	2/2	0.90	0.11	14,14,14,18	2
6	CMO	C	505	2/2	0.90	0.10	16,16,16,19	2
5	IMD	B	601	5/5	0.91	0.11	26,29,33,34	0
6	CMO	D	604	2/2	0.93	0.08	13,13,13,17	2
5	IMD	B	603	5/5	0.94	0.08	25,25,27,31	0
5	IMD	C	503	5/5	0.94	0.07	18,22,24,28	0
5	IMD	A	503	5/5	0.95	0.07	21,26,26,29	0
5	IMD	D	603	5/5	0.95	0.07	25,29,30,32	0
5	IMD	D	602	5/5	0.97	0.05	21,21,24,25	0
5	IMD	D	601	5/5	0.98	0.04	12,14,16,18	0
6	CMO	A	504	2/2	0.98	0.05	11,11,11,13	0
5	IMD	B	602	5/5	0.98	0.04	14,14,17,18	0
3	HCA	C	501	14/14	0.99	0.03	9,11,13,14	0
3	HCA	A	501	14/14	0.99	0.04	10,11,13,14	0
8	FE2	B	606	1/1	0.99	0.03	15,15,15,15	1
4	ICE	C	502	17/17	1.00	0.01	11,11,12,12	0
6	CMO	C	504	2/2	1.00	0.04	10,10,10,11	0
4	ICE	C	506	1/17	1.00	0.03	18,18,18,18	0
4	ICE	A	502	17/17	1.00	0.01	11,11,12,12	0
7	CLF	A	507	15/15	1.00	0.01	11,11,12,12	0
7	CLF	C	507	15/15	1.00	0.01	11,12,12,13	0
8	FE2	B	605	1/1	1.00	0.03	14,14,14,14	1
4	ICE	A	506	1/17	1.00	0.03	18,18,18,18	0

The following is a graphical depiction of the model fit to experimental electron density of all instances of the Ligand of Interest. In addition, ligands with molecular weight > 250 and outliers as shown on the geometry validation Tables will also be included. Each fit is shown from different orientation to approximate a three-dimensional view.

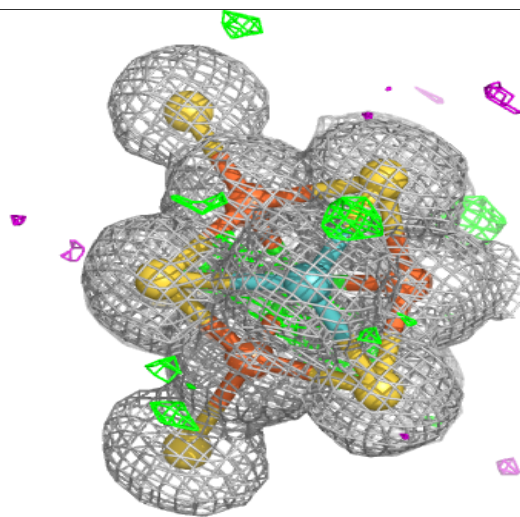
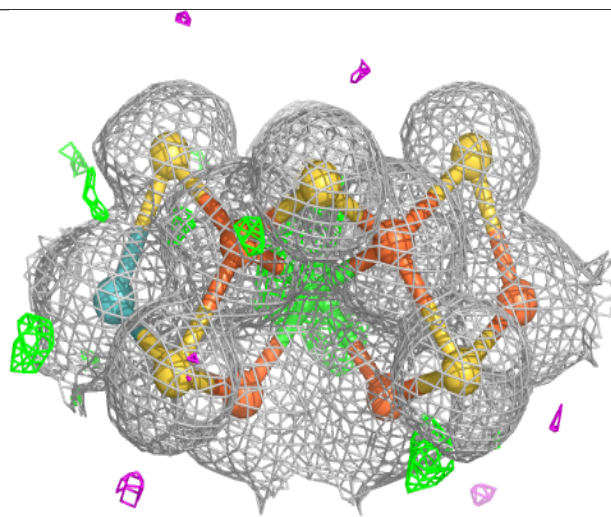
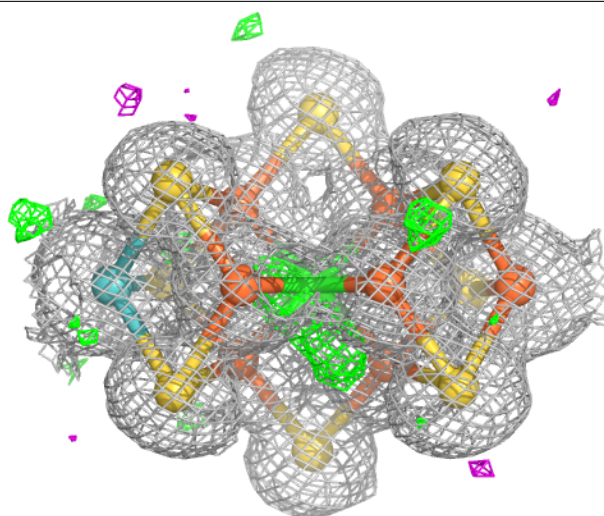
**Electron density around ICE C 502:**

$2mF_o-DF_c$  (at 0.7 rmsd) in gray  
 $mF_o-DF_c$  (at 3 rmsd) in purple (negative)  
and green (positive)



**Electron density around ICE A 502:**

$2mF_o-DF_c$  (at 0.7 rmsd) in gray  
 $mF_o-DF_c$  (at 3 rmsd) in purple (negative)  
and green (positive)



## 6.5 Other polymers [i](#)

There are no such residues in this entry.