



wwPDB X-ray Structure Validation Summary Report ⓘ

Mar 6, 2026 – 07:08 PM UTC

PDB ID : 2TMD / pdb_00002tmd
Title : CORRELATION OF X-RAY DEDUCED AND EXPERIMENTAL AMINO ACID SEQUENCES OF TRIMETHYLAMINE DEHYDROGENASE
Authors : Mathews, F.S.; Lim, L.W.; White, S.
Deposited on : 1993-10-15
Resolution : 2.40 Å(reported)

This is a wwPDB X-ray Structure Validation Summary Report for a publicly released PDB entry.

We welcome your comments at validation@mail.wwpdb.org

A user guide is available at

<https://www.wwpdb.org/validation/2017/XrayValidationReportHelp>

with specific help available everywhere you see the ⓘ symbol.

The types of validation reports are described at

<http://www.wwpdb.org/validation/2017/FAQs#types>.

The following versions of software and data (see [references ⓘ](#)) were used in the production of this report:

MolProbity : 4-5-2 with Phenix2.0
Mogul : 2022.3.0, CSD as543be (2022)
Xtrriage (Phenix) : **NOT EXECUTED**
EDS : **NOT EXECUTED**
Buster-report : wwPDB partial adaption of 1.1.7 (2018)
Percentile statistics : 20250101.v01 (using entries in the PDB archive January 1st 2025)
Ideal geometry (proteins) : Engh & Huber (2001)
Ideal geometry (DNA, RNA) : Parkinson et al. (1996)
Validation Pipeline (wwPDB-VP) : 2.49

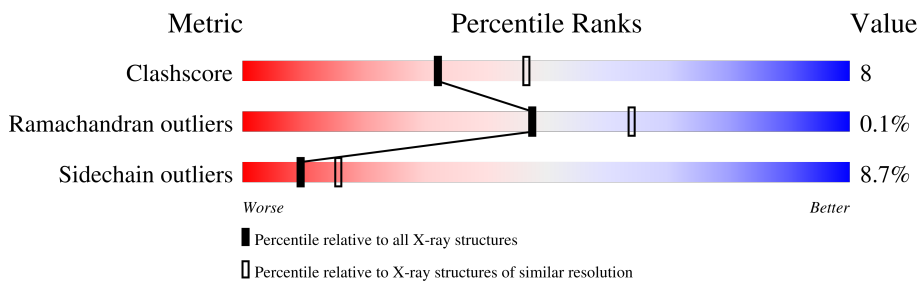
1 Overall quality at a glance

The following experimental techniques were used to determine the structure:

X-RAY DIFFRACTION

The reported resolution of this entry is 2.40 Å.

Percentile scores (ranging between 0-100) for global validation metrics of the entry are shown in the following graphic. The table shows the number of entries on which the scores are based.



Metric	Whole archive (#Entries)	Similar resolution (#Entries, resolution range(Å))
Clashscore	190562	5391 (2.40-2.40)
Ramachandran outliers	187476	5320 (2.40-2.40)
Sidechain outliers	187428	5321 (2.40-2.40)

The table below summarises the geometric issues observed across the polymeric chains and their fit to the electron density. The red, orange, yellow and green segments of the lower bar indicate the fraction of residues that contain outliers for ≥ 3 , 2, 1 and 0 types of geometric quality criteria respectively. A grey segment represents the fraction of residues that are not modelled. The numeric value for each fraction is indicated below the corresponding segment, with a dot representing fractions $\leq 5\%$.

Note EDS was not executed.

Mol	Chain	Length	Quality of chain
1	A	729	
1	B	729	

2 Entry composition [i](#)

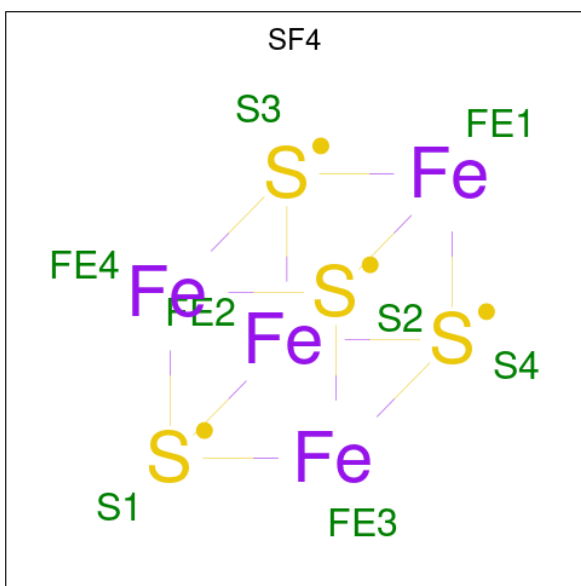
There are 5 unique types of molecules in this entry. The entry contains 12195 atoms, of which 0 are hydrogens and 0 are deuteriums.

In the tables below, the ZeroOcc column contains the number of atoms modelled with zero occupancy, the AltConf column contains the number of residues with at least one atom in alternate conformation and the Trace column contains the number of residues modelled with at most 2 atoms.

- Molecule 1 is a protein called TRIMETHYLAMINE DEHYDROGENASE.

Mol	Chain	Residues	Atoms					ZeroOcc	AltConf	Trace
			Total	C	N	O	S			
1	A	729	5741	3617	1012	1084	28	0	0	0
1	B	729	5741	3617	1012	1084	28	0	0	0

- Molecule 2 is IRON/SULFUR CLUSTER (CCD ID: SF4) (formula: Fe₄S₄).



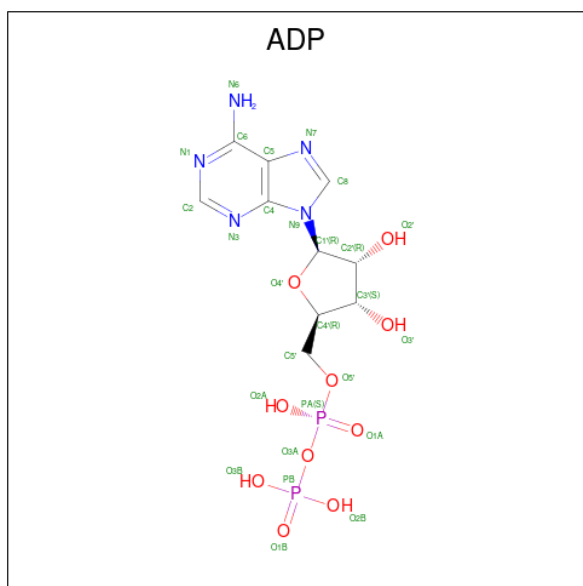
Mol	Chain	Residues	Atoms			ZeroOcc	AltConf
			Total	Fe	S		
2	A	1	8	4	4	0	0
2	B	1	8	4	4	0	0

- Molecule 3 is FLAVIN MONONUCLEOTIDE (CCD ID: FMN) (formula: C₁₇H₂₁N₄O₉P).



Mol	Chain	Residues	Atoms					ZeroOcc	AltConf
3	A	1	Total	C	N	O	P	0	0
			31	17	4	9	1		
3	B	1	Total	C	N	O	P	0	0
			31	17	4	9	1		

- Molecule 4 is ADENOSINE-5'-DIPHOSPHATE (CCD ID: ADP) (formula: $C_{10}H_{15}N_5O_{10}P_2$).



Mol	Chain	Residues	Atoms					ZeroOcc	AltConf
4	A	1	Total	C	N	O	P	0	0
			27	10	5	10	2		
4	B	1	Total	C	N	O	P	0	0
			27	10	5	10	2		

- Molecule 5 is water.

Mol	Chain	Residues	Atoms		ZeroOcc	AltConf
5	A	287	Total 287	O 287	0	0
5	B	294	Total 294	O 294	0	0



4 Data and refinement statistics

Xtrriage (Phenix) and EDS were not executed - this section is therefore incomplete.

Property	Value	Source
Space group	P 1 21 1	Depositor
Cell constants a, b, c, α , β , γ	147.75Å 71.95Å 83.82Å 90.00° 97.69° 90.00°	Depositor
Resolution (Å)	10.00 – 2.40	Depositor
% Data completeness (in resolution range)	(Not available) (10.00-2.40)	Depositor
R_{merge}	(Not available)	Depositor
R_{sym}	(Not available)	Depositor
Refinement program	X-PLOR	Depositor
R, R_{free}	0.154 , (Not available)	Depositor
Estimated twinning fraction	No twinning to report.	Xtrriage
Total number of atoms	12195	wwPDB-VP
Average B, all atoms (Å ²)	17.0	wwPDB-VP

5 Model quality [i](#)

5.1 Standard geometry [i](#)

Bond lengths and bond angles in the following residue types are not validated in this section: ADP, SF4, FMN

The Z score for a bond length (or angle) is the number of standard deviations the observed value is removed from the expected value. A bond length (or angle) with $|Z| > 5$ is considered an outlier worth inspection. RMSZ is the root-mean-square of all Z scores of the bond lengths (or angles).

Mol	Chain	Bond lengths		Bond angles	
		RMSZ	# Z >5	RMSZ	# Z >5
1	A	0.49	0/5885	0.76	0/7980
1	B	0.47	0/5885	0.74	1/7980 (0.0%)
All	All	0.48	0/11770	0.75	1/15960 (0.0%)

Chiral center outliers are detected by calculating the chiral volume of a chiral center and verifying if the center is modelled as a planar moiety or with the opposite hand. A planarity outlier is detected by checking planarity of atoms in a peptide group, atoms in a mainchain group or atoms of a sidechain that are expected to be planar.

Mol	Chain	#Chirality outliers	#Planarity outliers
1	A	0	18
1	B	0	16
All	All	0	34

There are no bond length outliers.

All (1) bond angle outliers are listed below:

Mol	Chain	Res	Type	Atoms	Z	Observed($^{\circ}$)	Ideal($^{\circ}$)
1	B	8	ILE	CB-CA-C	-5.10	105.36	112.04

There are no chirality outliers.

5 of 34 planarity outliers are listed below:

Mol	Chain	Res	Type	Group
1	A	126	TYR	Sidechain
1	A	23	ARG	Sidechain
1	A	45	ARG	Sidechain
1	A	72	ARG	Sidechain
1	A	84	ARG	Sidechain

5.2 Too-close contacts [i](#)

In the following table, the Non-H and H(model) columns list the number of non-hydrogen atoms and hydrogen atoms in the chain respectively. The H(added) column lists the number of hydrogen atoms added and optimized by MolProbity. The Clashes column lists the number of clashes within the asymmetric unit, whereas Symm-Clashes lists symmetry-related clashes.

Mol	Chain	Non-H	H(model)	H(added)	Clashes	Symm-Clashes
1	A	5741	0	5574	104	0
1	B	5741	0	5574	93	0
2	A	8	0	0	1	0
2	B	8	0	0	1	0
3	A	31	0	18	1	0
3	B	31	0	18	3	0
4	A	27	0	12	0	0
4	B	27	0	12	0	0
5	A	287	0	0	6	0
5	B	294	0	0	10	0
All	All	12195	0	11208	183	0

The all-atom clashscore is defined as the number of clashes found per 1000 atoms (including hydrogen atoms). The all-atom clashscore for this structure is 8.

The worst 5 of 183 close contacts within the same asymmetric unit are listed below, sorted by their clash magnitude.

Atom-1	Atom-2	Interatomic distance (Å)	Clash overlap (Å)
1:A:646:SER:H	1:B:125:GLN:HE22	1.12	0.90
1:B:276:GLN:HE22	1:B:302:ASP:H	1.24	0.81
1:B:379:HIS:HD2	1:B:381:GLU:H	1.33	0.74
1:A:646:SER:H	1:B:125:GLN:NE2	1.89	0.69
1:B:627:ASN:HD22	1:B:628:THR:N	1.89	0.69

There are no symmetry-related clashes.

5.3 Torsion angles [i](#)

5.3.1 Protein backbone [i](#)

In the following table, the Percentiles column shows the percent Ramachandran outliers of the chain as a percentile score with respect to all X-ray entries followed by that with respect to entries of similar resolution.

The Analysed column shows the number of residues for which the backbone conformation was

analysed, and the total number of residues.

Mol	Chain	Analysed	Favoured	Allowed	Outliers	Percentiles	
1	A	727/729 (100%)	698 (96%)	29 (4%)	0	100	100
1	B	727/729 (100%)	704 (97%)	22 (3%)	1 (0%)	48	64
All	All	1454/1458 (100%)	1402 (96%)	51 (4%)	1 (0%)	48	64

All (1) Ramachandran outliers are listed below:

Mol	Chain	Res	Type
1	B	238	VAL

5.3.2 Protein sidechains [i](#)

In the following table, the Percentiles column shows the percent sidechain outliers of the chain as a percentile score with respect to all X-ray entries followed by that with respect to entries of similar resolution.

The Analysed column shows the number of residues for which the sidechain conformation was analysed, and the total number of residues.

Mol	Chain	Analysed	Rotameric	Outliers	Percentiles	
1	A	602/602 (100%)	544 (90%)	58 (10%)	8	12
1	B	602/602 (100%)	555 (92%)	47 (8%)	11	20
All	All	1204/1204 (100%)	1099 (91%)	105 (9%)	9	16

5 of 105 residues with a non-rotameric sidechain are listed below:

Mol	Chain	Res	Type
1	A	696	GLU
1	B	221	THR
1	B	621	VAL
1	B	9	LEU
1	B	76	ARG

Sometimes sidechains can be flipped to improve hydrogen bonding and reduce clashes. 5 of 20 such sidechains are listed below:

Mol	Chain	Res	Type
1	B	379	HIS
1	B	627	ASN
1	B	652	ASN

Continued on next page...

Continued from previous page...

Mol	Chain	Res	Type
1	B	630	HIS
1	B	64	ASN

5.3.3 RNA [i](#)

There are no RNA molecules in this entry.

5.4 Non-standard residues in protein, DNA, RNA chains [i](#)

There are no non-standard protein/DNA/RNA residues in this entry.

5.5 Carbohydrates [i](#)

There are no oligosaccharides in this entry.

5.6 Ligand geometry [i](#)

6 ligands are modelled in this entry.

In the following table, the Counts columns list the number of bonds (or angles) for which Mogul statistics could be retrieved, the number of bonds (or angles) that are observed in the model and the number of bonds (or angles) that are defined in the Chemical Component Dictionary. The Link column lists molecule types, if any, to which the group is linked. The Z score for a bond length (or angle) is the number of standard deviations the observed value is removed from the expected value. A bond length (or angle) with $|Z| > 2$ is considered an outlier worth inspection. RMSZ is the root-mean-square of all Z scores of the bond lengths (or angles).

Mol	Type	Chain	Res	Link	Bond lengths			Bond angles		
					Counts	RMSZ	# Z > 2	Counts	RMSZ	# Z > 2
3	FMN	A	802	-	33,33,33	1.76	8 (24%)	48,50,50	1.88	13 (27%)
4	ADP	B	803	-	28,29,29	1.02	0	43,45,45	0.88	0
3	FMN	B	802	-	33,33,33	1.62	6 (18%)	48,50,50	1.93	13 (27%)
2	SF4	B	801	1	0,12,12	-	-	-	-	-
4	ADP	A	803	-	28,29,29	1.05	2 (7%)	43,45,45	0.91	2 (4%)
2	SF4	A	801	1	0,12,12	-	-	-	-	-

In the following table, the Chirals column lists the number of chiral outliers, the number of chiral centers analysed, the number of these observed in the model and the number defined in the Chemical Component Dictionary. Similar counts are reported in the Torsion and Rings columns. '-' means no outliers of that kind were identified.

Mol	Type	Chain	Res	Link	Chirals	Torsions	Rings
3	FMN	A	802	-	-	1/18/18/18	0/3/3/3
4	ADP	B	803	-	-	3/16/32/32	0/3/3/3
3	FMN	B	802	-	-	1/18/18/18	0/3/3/3
2	SF4	B	801	1	-	-	0/6/5/5
4	ADP	A	803	-	-	3/16/32/32	0/3/3/3
2	SF4	A	801	1	-	-	0/6/5/5

The worst 5 of 16 bond length outliers are listed below:

Mol	Chain	Res	Type	Atoms	Z	Observed(Å)	Ideal(Å)
3	A	802	FMN	C1'-N10	-4.42	1.37	1.47
3	B	802	FMN	C1'-N10	-4.03	1.38	1.47
3	A	802	FMN	C9-C8	-3.92	1.34	1.39
3	B	802	FMN	C1'-C2'	3.69	1.57	1.52
3	A	802	FMN	C4A-N5	3.20	1.37	1.30

The worst 5 of 28 bond angle outliers are listed below:

Mol	Chain	Res	Type	Atoms	Z	Observed(°)	Ideal(°)
3	B	802	FMN	C9A-C5A-N5	-4.86	117.29	122.45
3	A	802	FMN	C10-N1-C2	4.59	126.79	116.85
3	B	802	FMN	C4-C4A-C10	4.49	124.63	116.93
3	A	802	FMN	C4A-C10-N1	-4.48	113.60	124.59
3	A	802	FMN	C4-C4A-C10	4.32	124.34	116.93

There are no chirality outliers.

5 of 8 torsion outliers are listed below:

Mol	Chain	Res	Type	Atoms
4	A	803	ADP	PB-O3A-PA-O1A
4	B	803	ADP	PB-O3A-PA-O2A
4	A	803	ADP	PB-O3A-PA-O2A
4	B	803	ADP	PB-O3A-PA-O1A
3	B	802	FMN	C4'-C5'-O5'-P

There are no ring outliers.

4 monomers are involved in 6 short contacts:

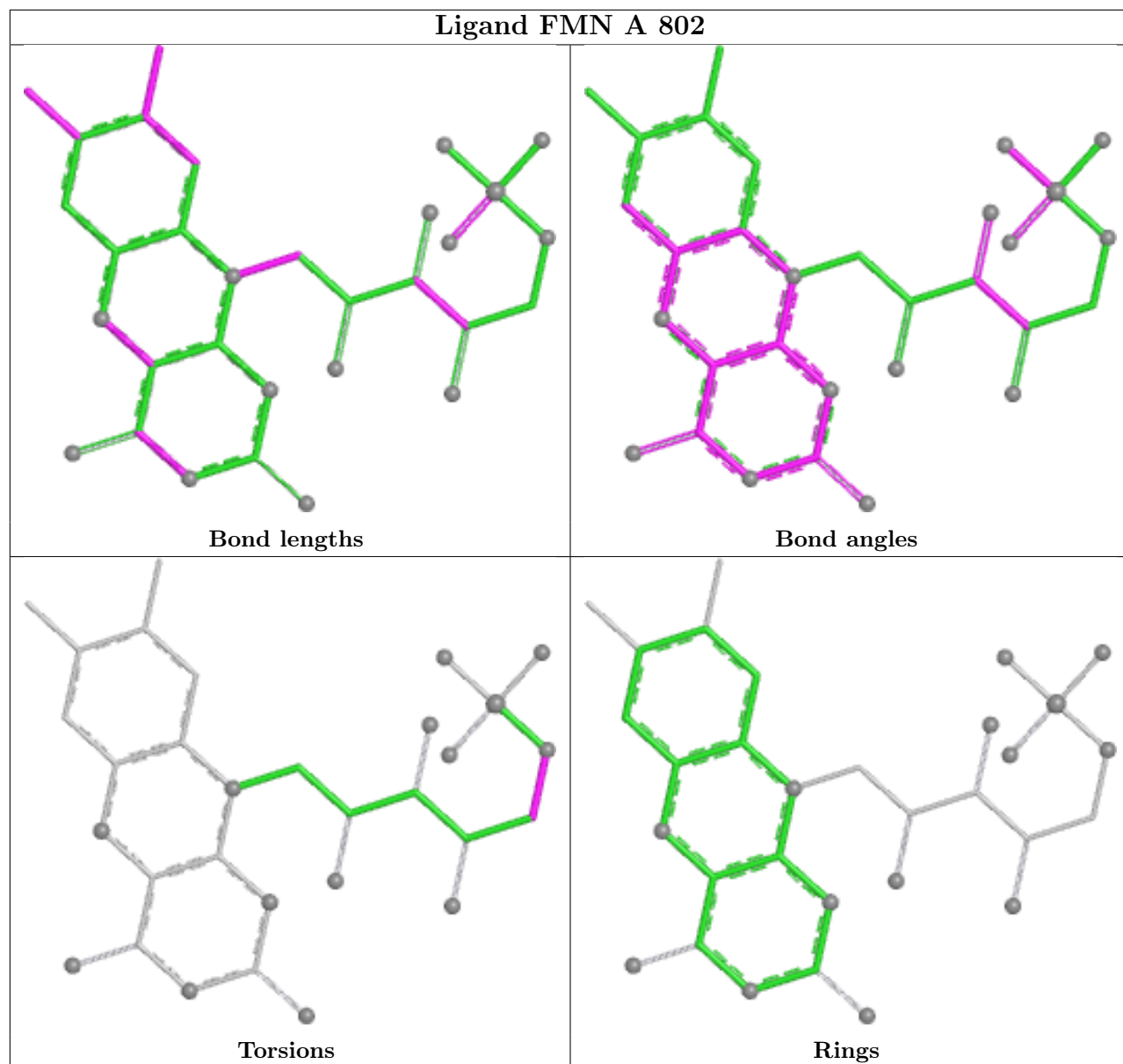
Mol	Chain	Res	Type	Clashes	Symm-Clashes
3	A	802	FMN	1	0
3	B	802	FMN	3	0

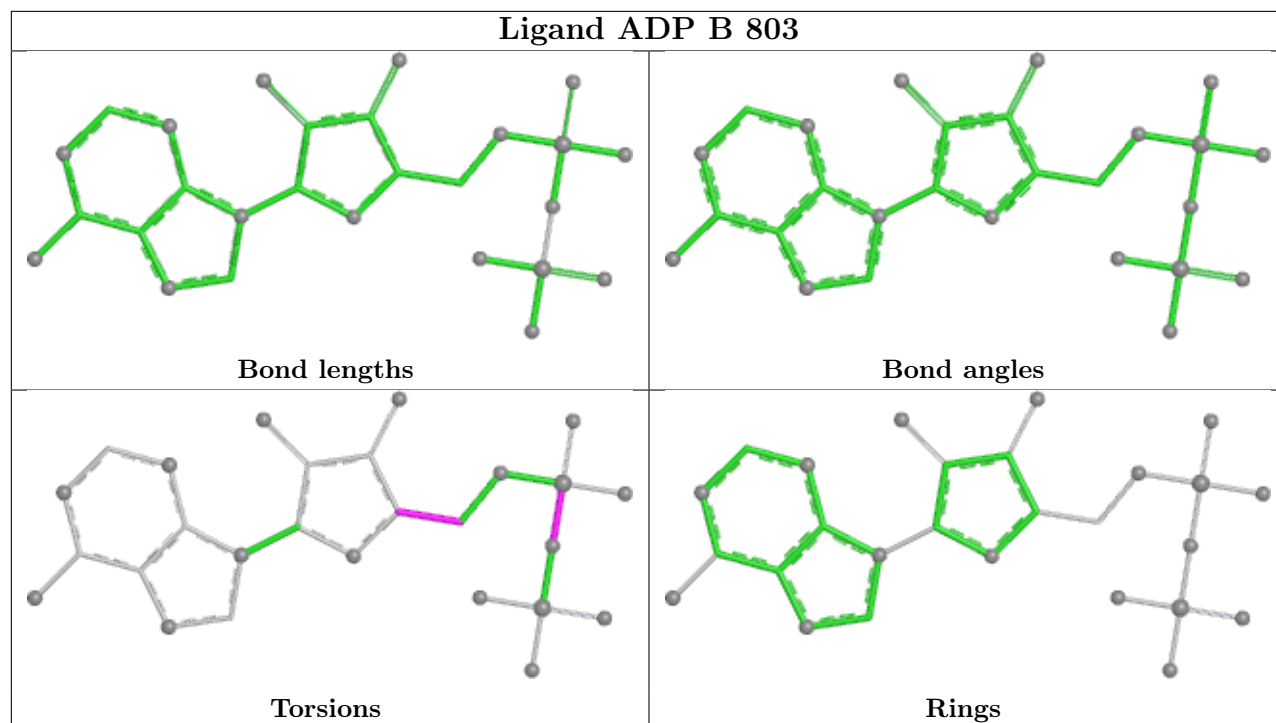
Continued on next page...

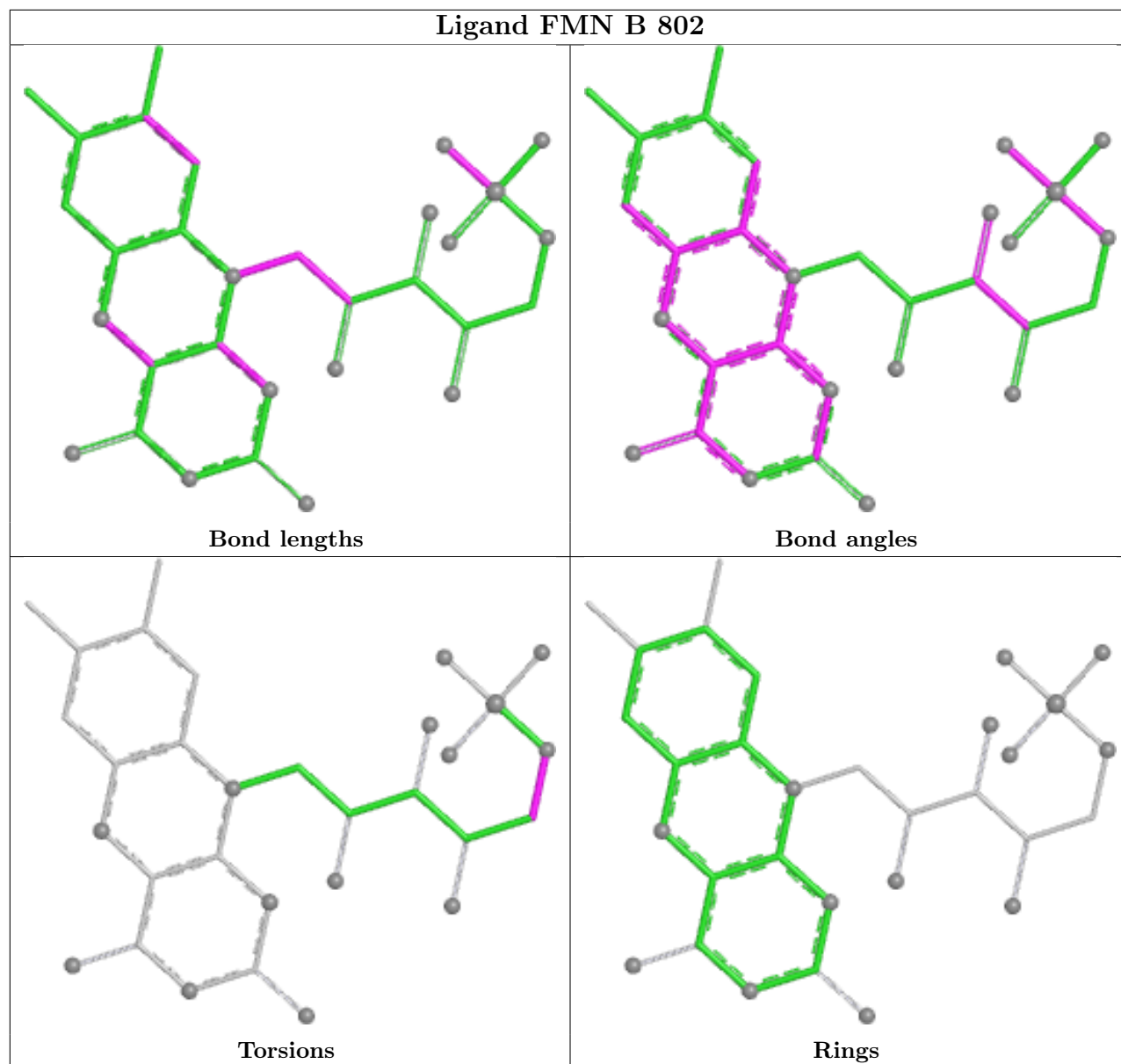
Continued from previous page...

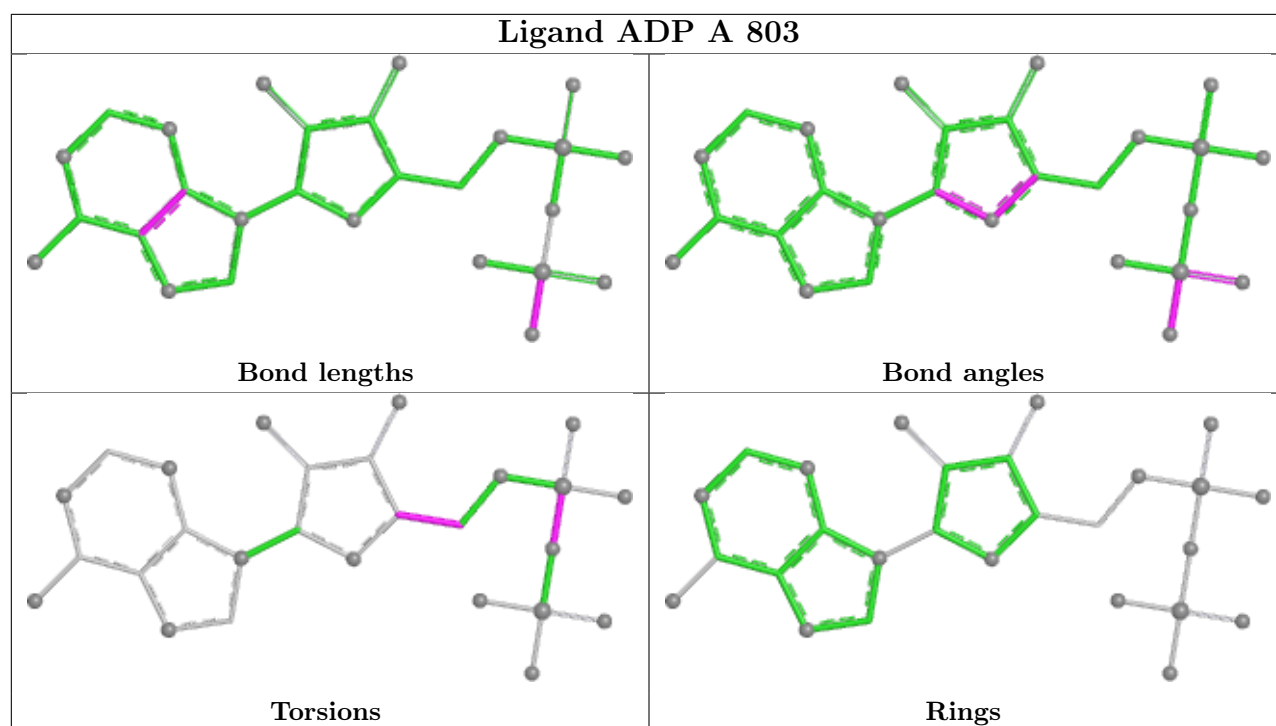
Mol	Chain	Res	Type	Clashes	Symm-Clashes
2	B	801	SF4	1	0
2	A	801	SF4	1	0

The following is a two-dimensional graphical depiction of Mogul quality analysis of bond lengths, bond angles, torsion angles, and ring geometry for all instances of the Ligand of Interest. In addition, ligands with molecular weight > 250 and outliers as shown on the validation Tables will also be included. For torsion angles, if less than 5% of the Mogul distribution of torsion angles is within 10 degrees of the torsion angle in question, then that torsion angle is considered an outlier. Any bond that is central to one or more torsion angles identified as an outlier by Mogul will be highlighted in the graph. For rings, the root-mean-square deviation (RMSD) between the ring in question and similar rings identified by Mogul is calculated over all ring torsion angles. If the average RMSD is greater than 60 degrees and the minimal RMSD between the ring in question and any Mogul-identified rings is also greater than 60 degrees, then that ring is considered an outlier. The outliers are highlighted in purple. The color gray indicates Mogul did not find sufficient equivalents in the CSD to analyse the geometry.









5.7 Other polymers [i](#)

There are no such residues in this entry.

5.8 Polymer linkage issues [i](#)

There are no chain breaks in this entry.

6 Fit of model and data

6.1 Protein, DNA and RNA chains

EDS was not executed - this section is therefore empty.

6.2 Non-standard residues in protein, DNA, RNA chains

EDS was not executed - this section is therefore empty.

6.3 Carbohydrates

EDS was not executed - this section is therefore empty.

6.4 Ligands

EDS was not executed - this section is therefore empty.

6.5 Other polymers

EDS was not executed - this section is therefore empty.