



Full wwPDB X-ray Structure Validation Report ⓘ

Mar 10, 2026 – 03:16 AM UTC

PDB ID : 1TP2 / pdb_00001tp2
Title : Crystal structure of the complex of group II phospholipaseA2 dimer with a fatty acid tridecanoic acid at 2.4 Å resolution
Authors : Singh, N.; Jabeen, T.; Sharma, S.; Singh, T.P.
Deposited on : 2004-06-15
Resolution : 2.40 Å (reported)

This is a Full wwPDB X-ray Structure Validation Report for a publicly released PDB entry.

We welcome your comments at validation@mail.wwpdb.org

A user guide is available at

<https://www.wwpdb.org/validation/2017/XrayValidationReportHelp>

with specific help available everywhere you see the ⓘ symbol.

The types of validation reports are described at

<http://www.wwpdb.org/validation/2017/FAQs#types>.

The following versions of software and data (see [references ⓘ](#)) were used in the production of this report:

MolProbity : 4-5-2 with Phenix2.0
Mogul : 2022.3.0, CSD as543be (2022)
Xtrriage (Phenix) : **NOT EXECUTED**
EDS : **NOT EXECUTED**
Percentile statistics : 20250101.v01 (using entries in the PDB archive January 1st 2025)
Ideal geometry (proteins) : Engh & Huber (2001)
Ideal geometry (DNA, RNA) : Parkinson et al. (1996)
Validation Pipeline (wwPDB-VP) : 2.49

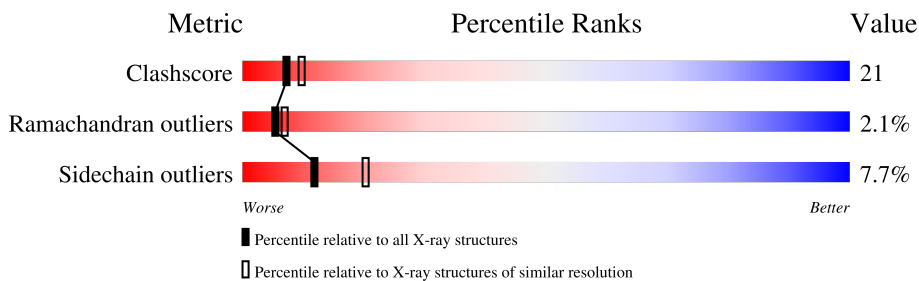
1 Overall quality at a glance

The following experimental techniques were used to determine the structure:

X-RAY DIFFRACTION

The reported resolution of this entry is 2.40 Å.

Percentile scores (ranging between 0-100) for global validation metrics of the entry are shown in the following graphic. The table shows the number of entries on which the scores are based.



Metric	Whole archive (#Entries)	Similar resolution (#Entries, resolution range(Å))
Clashscore	190562	5391 (2.40-2.40)
Ramachandran outliers	187476	5320 (2.40-2.40)
Sidechain outliers	187428	5321 (2.40-2.40)

The table below summarises the geometric issues observed across the polymeric chains and their fit to the electron density. The red, orange, yellow and green segments of the lower bar indicate the fraction of residues that contain outliers for ≥ 3 , 2, 1 and 0 types of geometric quality criteria respectively. A grey segment represents the fraction of residues that are not modelled. The numeric value for each fraction is indicated below the corresponding segment, with a dot representing fractions $\leq 5\%$.

Note EDS was not executed.

Mol	Chain	Length	Quality of chain
1	A	121	57% 35% 6% •
1	B	121	65% 32% ••

The following table lists non-polymeric compounds, carbohydrate monomers and non-standard residues in protein, DNA, RNA chains that are outliers for geometric or electron-density-fit criteria:

Mol	Type	Chain	Res	Chirality	Geometry	Clashes	Electron density
3	TDA	A	201	-	X	X	-
3	TDA	B	202	-	X	-	-

2 Entry composition [i](#)

There are 5 unique types of molecules in this entry. The entry contains 2087 atoms, of which 0 are hydrogens and 0 are deuteriums.

In the tables below, the ZeroOcc column contains the number of atoms modelled with zero occupancy, the AltConf column contains the number of residues with at least one atom in alternate conformation and the Trace column contains the number of residues modelled with at most 2 atoms.

- Molecule 1 is a protein called Phospholipase A2 VRV-PL-VIIIa.

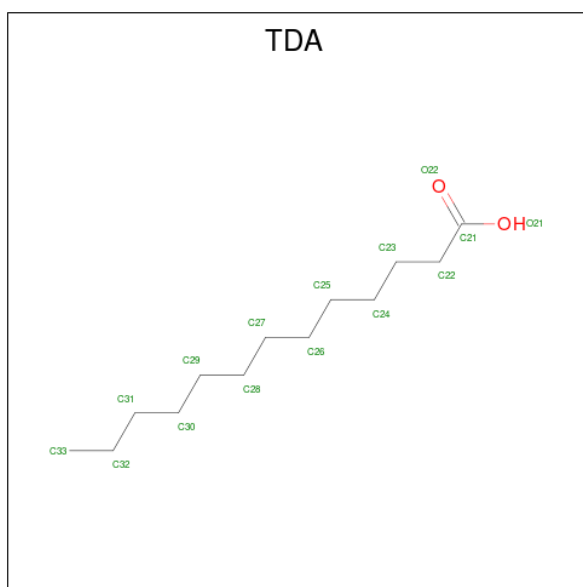
Mol	Chain	Residues	Atoms					ZeroOcc	AltConf	Trace
			Total	C	N	O	S			
1	A	121	Total 957	C 602	N 161	O 178	S 16	0	1	0
1	B	121	Total 944	C 591	N 159	O 178	S 16	0	0	0

- Molecule 2 is SULFATE ION (CCD ID: SO4) (formula: O₄S).



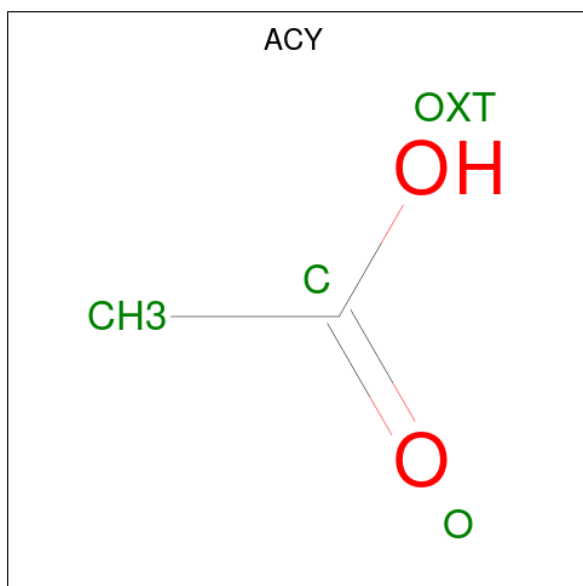
Mol	Chain	Residues	Atoms			ZeroOcc	AltConf
			Total	O	S		
2	A	1	Total 5	O 4	S 1	0	0

- Molecule 3 is N-TRIDECANOIC ACID (CCD ID: TDA) (formula: C₁₃H₂₆O₂).



Mol	Chain	Residues	Atoms			ZeroOcc	AltConf
3	A	1	Total	C	O	0	0
			15	13	2		
3	B	1	Total	C	O	0	0
			15	13	2		

- Molecule 4 is ACETIC ACID (CCD ID: ACY) (formula: C₂H₄O₂).



Mol	Chain	Residues	Atoms			ZeroOcc	AltConf
4	A	1	Total	C	O	0	0
			4	2	2		

- Molecule 5 is water.

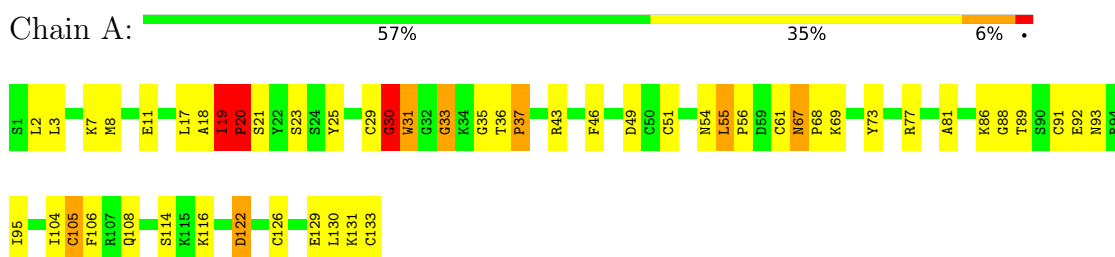
Mol	Chain	Residues	Atoms		ZeroOcc	AltConf
5	A	72	Total 72	O 72	0	0
5	B	75	Total 75	O 75	0	0

3 Residue-property plots [i](#)

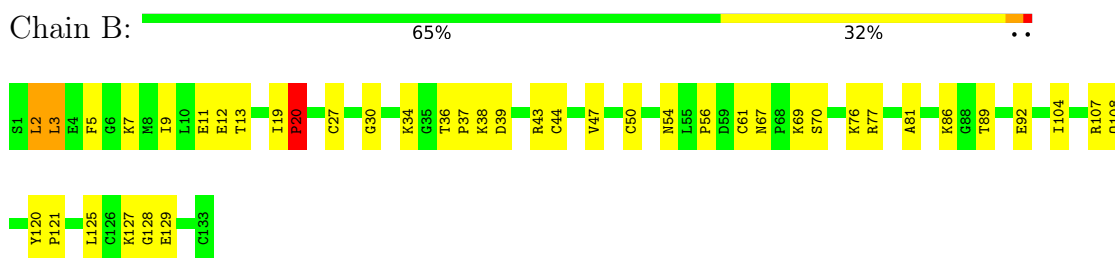
These plots are drawn for all protein, RNA, DNA and oligosaccharide chains in the entry. The first graphic for a chain summarises the proportions of the various outlier classes displayed in the second graphic. The second graphic shows the sequence view annotated by issues in geometry. Residues are color-coded according to the number of geometric quality criteria for which they contain at least one outlier: green = 0, yellow = 1, orange = 2 and red = 3 or more. Stretches of 2 or more consecutive residues without any outlier are shown as a green connector. Residues present in the sample, but not in the model, are shown in grey.

Note EDS was not executed.

- Molecule 1: Phospholipase A2 VRV-PL-VIIIa



- Molecule 1: Phospholipase A2 VRV-PL-VIIIa



4 Data and refinement statistics

Xtrriage (Phenix) and EDS were not executed - this section is therefore incomplete.

Property	Value	Source
Space group	P 21 21 21	Depositor
Cell constants a, b, c, α , β , γ	45.87Å 69.07Å 75.65Å 90.00° 90.00° 90.00°	Depositor
Resolution (Å)	19.86 – 2.40	Depositor
% Data completeness (in resolution range)	79.1 (19.86-2.40)	Depositor
R_{merge}	(Not available)	Depositor
R_{sym}	(Not available)	Depositor
Refinement program	CNS 0.9	Depositor
R, R_{free}	0.195 , 0.242	Depositor
Estimated twinning fraction	No twinning to report.	Xtrriage
Total number of atoms	2087	wwPDB-VP
Average B, all atoms (Å ²)	27.0	wwPDB-VP

5 Model quality i

5.1 Standard geometry i

Bond lengths and bond angles in the following residue types are not validated in this section: TDA, SO4, ACY

The Z score for a bond length (or angle) is the number of standard deviations the observed value is removed from the expected value. A bond length (or angle) with $|Z| > 5$ is considered an outlier worth inspection. RMSZ is the root-mean-square of all Z scores of the bond lengths (or angles).

Mol	Chain	Bond lengths		Bond angles	
		RMSZ	# Z >5	RMSZ	# Z >5
1	A	0.69	2/979 (0.2%)	1.55	14/1315 (1.1%)
1	B	0.57	0/964	2.00	13/1292 (1.0%)
All	All	0.63	2/1943 (0.1%)	1.78	27/2607 (1.0%)

Chiral center outliers are detected by calculating the chiral volume of a chiral center and verifying if the center is modelled as a planar moiety or with the opposite hand. A planarity outlier is detected by checking planarity of atoms in a peptide group, atoms in a mainchain group or atoms of a sidechain that are expected to be planar.

Mol	Chain	#Chirality outliers	#Planarity outliers
1	A	0	4

All (2) bond length outliers are listed below:

Mol	Chain	Res	Type	Atoms	Z	Observed(Å)	Ideal(Å)
1	A	19	ILE	N-CA	-6.10	1.39	1.46
1	A	18	ALA	C-N	5.38	1.39	1.33

All (27) bond angle outliers are listed below:

Mol	Chain	Res	Type	Atoms	Z	Observed(°)	Ideal(°)
1	B	19	ILE	CA-C-N	36.27	165.18	119.84
1	B	19	ILE	C-N-CA	36.27	165.18	119.84
1	B	20	PRO	CA-N-CD	-20.38	83.47	112.00
1	A	19	ILE	CA-C-N	16.80	140.85	119.84
1	A	19	ILE	C-N-CA	16.80	140.85	119.84
1	A	20	PRO	CA-N-CD	-16.67	88.66	112.00
1	B	20	PRO	N-CA-CB	16.25	120.32	103.25
1	B	20	PRO	N-CD-CG	13.22	123.03	103.20
1	A	20	PRO	N-CA-CB	11.18	114.99	103.25

Continued on next page...

Continued from previous page...

Mol	Chain	Res	Type	Atoms	Z	Observed(°)	Ideal(°)
1	A	20	PRO	CB-CA-C	9.87	127.84	111.56
1	A	30	GLY	N-CA-C	-9.68	94.59	112.60
1	A	20	PRO	N-CD-CG	9.41	117.31	103.20
1	B	19	ILE	C-N-CD	-9.39	86.52	125.00
1	B	67	ASN	CA-C-N	9.30	129.93	119.32
1	B	67	ASN	C-N-CA	9.30	129.93	119.32
1	B	50	CYS	N-CA-C	-8.38	101.67	112.23
1	B	70	SER	N-CA-C	8.21	124.21	114.04
1	A	21	SER	CA-C-N	-7.27	110.81	122.23
1	A	21	SER	C-N-CA	-7.27	110.81	122.23
1	B	127	LYS	N-CA-C	6.34	124.31	110.80
1	A	67	ASN	CA-C-N	5.83	125.31	119.24
1	A	67	ASN	C-N-CA	5.83	125.31	119.24
1	A	19	ILE	CB-CA-C	5.79	121.91	111.36
1	B	44	CYS	N-CA-C	-5.79	104.97	111.28
1	A	67	ASN	O-C-N	5.73	126.58	121.36
1	A	19	ILE	C-N-CD	-5.57	102.17	125.00
1	B	19	ILE	CA-C-O	5.20	122.22	119.15

There are no chirality outliers.

All (4) planarity outliers are listed below:

Mol	Chain	Res	Type	Group
1	A	30	GLY	Peptide,Mainchain
1	A	31[B]	TRP	Peptide,Mainchain

5.2 Too-close contacts [\(i\)](#)

In the following table, the Non-H and H(model) columns list the number of non-hydrogen atoms and hydrogen atoms in the chain respectively. The H(added) column lists the number of hydrogen atoms added and optimized by MolProbity. The Clashes column lists the number of clashes within the asymmetric unit, whereas Symm-Clashes lists symmetry-related clashes.

Mol	Chain	Non-H	H(model)	H(added)	Clashes	Symm-Clashes
1	A	957	0	916	57	0
1	B	944	0	907	24	0
2	A	5	0	0	0	0
3	A	15	0	25	13	0
3	B	15	0	25	2	0
4	A	4	0	3	0	0
5	A	72	0	0	3	0

Continued on next page...

Continued from previous page...

Mol	Chain	Non-H	H(model)	H(added)	Clashes	Symm-Clashes
5	B	75	0	0	5	0
All	All	2087	0	1876	79	0

The all-atom clashscore is defined as the number of clashes found per 1000 atoms (including hydrogen atoms). The all-atom clashscore for this structure is 21.

All (79) close contacts within the same asymmetric unit are listed below, sorted by their clash magnitude.

Atom-1	Atom-2	Interatomic distance (Å)	Clash overlap (Å)
1:A:19:ILE:HG22	1:A:20:PRO:HD3	1.16	1.16
1:A:31[B]:TRP:CD1	1:B:43:ARG:HD2	1.94	1.02
1:A:19:ILE:CG2	1:A:20:PRO:HD3	1.98	0.93
1:A:31[B]:TRP:CD1	3:A:201:TDA:C33	2.53	0.92
1:B:2:LEU:HD23	3:B:202:TDA:H311	1.56	0.88
1:A:31[B]:TRP:CD1	3:A:201:TDA:H331	2.14	0.83
1:A:131:LYS:O	1:A:133:CYS:C	2.22	0.83
3:A:201:TDA:H311	1:B:47:VAL:HG22	1.67	0.76
1:A:31[B]:TRP:CD1	3:A:201:TDA:H333	2.20	0.75
1:A:31[B]:TRP:HD1	3:A:201:TDA:H331	1.51	0.75
1:A:25:TYR:O	1:A:29:CYS:HB2	1.87	0.74
1:A:31[B]:TRP:CZ3	1:A:69:LYS:NZ	2.57	0.72
1:A:19:ILE:HG22	1:A:20:PRO:CD	2.09	0.72
1:A:29:CYS:C	1:A:30:GLY:O	2.23	0.72
1:A:31[B]:TRP:HZ3	1:A:69:LYS:NZ	1.89	0.68
1:B:89:THR:OG1	1:B:92:GLU:HG3	1.94	0.67
1:A:23:SER:O	1:A:30:GLY:HA3	1.96	0.66
1:B:54:ASN:C	1:B:56:PRO:HD3	2.20	0.66
1:A:31[B]:TRP:CG	3:A:201:TDA:H333	2.32	0.64
1:A:8:MET:HE1	1:A:73:TYR:OH	1.98	0.64
1:B:7:LYS:HE2	1:B:11:GLU:OE2	1.98	0.64
1:A:31[B]:TRP:CG	1:B:43:ARG:HD2	2.34	0.62
1:B:121:PRO:HD2	1:B:125:LEU:HD12	1.79	0.62
1:A:61:CYS:C	1:A:68:PRO:HD3	2.25	0.61
1:A:7:LYS:O	1:A:11:GLU:HG3	2.02	0.60
1:A:31[A]:TRP:HA	5:A:433:HOH:O	2.02	0.59
1:A:104:ILE:O	1:A:108:GLN:HG3	2.03	0.59
1:A:54:ASN:O	1:A:55:LEU:HD12	2.05	0.56
1:B:77:ARG:HA	1:B:81:ALA:O	2.06	0.56
1:A:114:SER:OG	1:A:116:LYS:HB3	2.06	0.56
1:A:61:CYS:C	1:A:68:PRO:CD	2.79	0.55
1:A:8:MET:CE	1:A:73:TYR:OH	2.56	0.54

Continued on next page...

Continued from previous page...

Atom-1	Atom-2	Interatomic distance (Å)	Clash overlap (Å)
1:A:89:THR:OG1	1:A:92:GLU:HG3	2.08	0.54
1:A:31[B]:TRP:CB	3:A:201:TDA:H333	2.38	0.53
1:A:122:ASP:HB3	5:B:276:HOH:O	2.08	0.53
1:B:86:LYS:HD3	5:B:273:HOH:O	2.08	0.52
1:B:39:ASP:O	1:B:43:ARG:HG3	2.10	0.52
1:A:61:CYS:O	1:A:68:PRO:HD2	2.11	0.51
1:A:17:LEU:O	1:A:19:ILE:O	2.29	0.50
1:B:104:ILE:O	1:B:108:GLN:HG3	2.11	0.50
1:A:31[A]:TRP:H	3:A:201:TDA:H333	1.76	0.50
1:A:31[B]:TRP:HB2	3:A:201:TDA:H333	1.94	0.50
1:A:55:LEU:N	1:A:56:PRO:HD3	2.27	0.50
1:B:27:CYS:HB3	1:B:34:LYS:O	2.12	0.50
1:A:35:GLY:HA3	1:A:126:CYS:HB3	1.95	0.49
1:A:54:ASN:C	1:A:56:PRO:HD3	2.36	0.49
1:A:31[A]:TRP:CE2	1:A:69:LYS:HE2	2.48	0.49
1:A:67:ASN:N	1:A:68:PRO:CD	2.77	0.48
1:A:23:SER:O	3:A:201:TDA:H332	2.13	0.48
1:A:54:ASN:C	1:A:55:LEU:HD12	2.38	0.48
1:A:51:CYS:O	1:A:55:LEU:HD13	2.12	0.48
1:A:86:LYS:N	1:A:86:LYS:HD2	2.28	0.48
1:A:67:ASN:N	1:A:68:PRO:HD3	2.29	0.48
1:A:36:THR:O	1:A:37:PRO:C	2.57	0.46
1:B:5:PHE:O	1:B:9:ILE:HG13	2.14	0.46
1:B:2:LEU:HG	3:B:202:TDA:H291	1.97	0.46
1:B:12:GLU:O	1:B:107:ARG:HD3	2.17	0.45
1:B:37:PRO:CB	1:B:43:ARG:HG2	2.48	0.44
1:A:31[A]:TRP:N	3:A:201:TDA:H333	2.33	0.44
1:A:31[A]:TRP:HZ3	3:A:201:TDA:H301	1.84	0.43
1:A:25:TYR:HB3	1:A:29:CYS:HB2	2.01	0.43
1:A:88:GLY:H	1:A:93:ASN:HD21	1.66	0.42
1:A:25:TYR:HB3	1:A:29:CYS:CB	2.49	0.42
1:B:38:LYS:HD2	1:B:120:TYR:CE2	2.53	0.42
3:A:201:TDA:H311	1:B:47:VAL:CG2	2.45	0.42
1:A:91:CYS:O	1:A:95:ILE:HG13	2.20	0.42
1:B:43:ARG:HB2	5:B:236:HOH:O	2.20	0.42
1:B:61:CYS:HB3	5:B:264:HOH:O	2.19	0.42
1:A:19:ILE:CG2	1:A:20:PRO:CD	2.84	0.42
1:A:43:ARG:O	1:A:46:PHE:HB3	2.20	0.42
1:A:77:ARG:HA	1:A:81:ALA:O	2.20	0.41
1:A:11:GLU:HG2	5:A:402:HOH:O	2.19	0.41
1:A:131:LYS:HD3	1:A:131:LYS:HA	1.88	0.41

Continued on next page...

Continued from previous page...

Atom-1	Atom-2	Interatomic distance (Å)	Clash overlap (Å)
1:B:30:GLY:HA3	5:B:216:HOH:O	2.20	0.41
1:A:31[A]:TRP:NE1	1:A:69:LYS:HE2	2.35	0.41
1:B:3:LEU:HA	1:B:3:LEU:HD12	1.77	0.41
1:A:105:CYS:O	1:A:106:PHE:C	2.64	0.41
1:A:33:GLY:HA3	5:A:410:HOH:O	2.21	0.40
1:B:36:THR:O	1:B:37:PRO:C	2.65	0.40

There are no symmetry-related clashes.

5.3 Torsion angles [i](#)

5.3.1 Protein backbone [i](#)

In the following table, the Percentiles column shows the percent Ramachandran outliers of the chain as a percentile score with respect to all X-ray entries followed by that with respect to entries of similar resolution.

The Analysed column shows the number of residues for which the backbone conformation was analysed, and the total number of residues.

Mol	Chain	Analysed	Favoured	Allowed	Outliers	Percentiles	
1	A	120/121 (99%)	109 (91%)	8 (7%)	3 (2%)	4	5
1	B	119/121 (98%)	112 (94%)	5 (4%)	2 (2%)	7	10
All	All	239/242 (99%)	221 (92%)	13 (5%)	5 (2%)	5	7

All (5) Ramachandran outliers are listed below:

Mol	Chain	Res	Type
1	A	20	PRO
1	B	20	PRO
1	B	128	GLY
1	A	33	GLY
1	A	37	PRO

5.3.2 Protein sidechains [i](#)

In the following table, the Percentiles column shows the percent sidechain outliers of the chain as a percentile score with respect to all X-ray entries followed by that with respect to entries of similar resolution.

The Analysed column shows the number of residues for which the sidechain conformation was analysed, and the total number of residues.

Mol	Chain	Analysed	Rotameric	Outliers	Percentiles	
1	A	105/104 (101%)	96 (91%)	9 (9%)	10	16
1	B	104/104 (100%)	97 (93%)	7 (7%)	15	26
All	All	209/208 (100%)	193 (92%)	16 (8%)	12	20

All (16) residues with a non-rotameric sidechain are listed below:

Mol	Chain	Res	Type
1	A	2	LEU
1	A	3	LEU
1	A	19	ILE
1	A	49	ASP
1	A	55	LEU
1	A	105	CYS
1	A	122	ASP
1	A	129	GLU
1	A	130	LEU
1	B	2	LEU
1	B	3	LEU
1	B	13	THR
1	B	20	PRO
1	B	69	LYS
1	B	76	LYS
1	B	129	GLU

Sometimes sidechains can be flipped to improve hydrogen bonding and reduce clashes. All (2) such sidechains are listed below:

Mol	Chain	Res	Type
1	A	79	ASN
1	B	54	ASN

5.3.3 RNA [i](#)

There are no RNA molecules in this entry.

5.4 Non-standard residues in protein, DNA, RNA chains [i](#)

There are no non-standard protein/DNA/RNA residues in this entry.

5.5 Carbohydrates [i](#)

There are no oligosaccharides in this entry.

5.6 Ligand geometry [i](#)

4 ligands are modelled in this entry.

In the following table, the Counts columns list the number of bonds (or angles) for which Mogul statistics could be retrieved, the number of bonds (or angles) that are observed in the model and the number of bonds (or angles) that are defined in the Chemical Component Dictionary. The Link column lists molecule types, if any, to which the group is linked. The Z score for a bond length (or angle) is the number of standard deviations the observed value is removed from the expected value. A bond length (or angle) with $|Z| > 2$ is considered an outlier worth inspection. RMSZ is the root-mean-square of all Z scores of the bond lengths (or angles).

Mol	Type	Chain	Res	Link	Bond lengths			Bond angles		
					Counts	RMSZ	# Z > 2	Counts	RMSZ	# Z > 2
4	ACY	A	401	-	3,3,3	1.26	0	3,3,3	1.64	1 (33%)
3	TDA	A	201	-	14,14,14	2.05	6 (42%)	14,14,14	2.36	3 (21%)
2	SO4	A	301	-	4,4,4	0.62	0	6,6,6	0.35	0
3	TDA	B	202	-	14,14,14	1.99	6 (42%)	14,14,14	2.37	4 (28%)

In the following table, the Chirals column lists the number of chiral outliers, the number of chiral centers analysed, the number of these observed in the model and the number defined in the Chemical Component Dictionary. Similar counts are reported in the Torsion and Rings columns. '-' means no outliers of that kind were identified.

Mol	Type	Chain	Res	Link	Chirals	Torsions	Rings
3	TDA	A	201	-	-	7/12/12/12	-
3	TDA	B	202	-	-	8/12/12/12	-

All (12) bond length outliers are listed below:

Mol	Chain	Res	Type	Atoms	Z	Observed(Å)	Ideal(Å)
3	A	201	TDA	C22-C21	3.55	1.58	1.50
3	A	201	TDA	C28-C27	3.33	1.68	1.51
3	B	202	TDA	C27-C26	3.32	1.68	1.51
3	B	202	TDA	C22-C21	3.07	1.57	1.50
3	B	202	TDA	C28-C27	2.87	1.66	1.51
3	A	201	TDA	C32-C31	2.82	1.69	1.51
3	A	201	TDA	C29-C28	2.64	1.64	1.51
3	A	201	TDA	C27-C26	2.58	1.64	1.51

Continued on next page...

Continued from previous page...

Mol	Chain	Res	Type	Atoms	Z	Observed(Å)	Ideal(Å)
3	B	202	TDA	C32-C31	2.48	1.67	1.51
3	B	202	TDA	C25-C24	2.45	1.64	1.51
3	B	202	TDA	C29-C28	2.42	1.63	1.51
3	A	201	TDA	C30-C29	2.11	1.62	1.51

All (8) bond angle outliers are listed below:

Mol	Chain	Res	Type	Atoms	Z	Observed(°)	Ideal(°)
3	A	201	TDA	O21-C21-C22	-6.58	93.21	114.00
3	B	202	TDA	O21-C21-C22	-6.11	94.71	114.00
3	A	201	TDA	C33-C32-C31	4.01	140.47	113.36
3	B	202	TDA	C33-C32-C31	3.49	136.90	113.36
3	B	202	TDA	C31-C30-C29	-3.35	97.43	114.37
3	A	201	TDA	C31-C30-C29	-3.10	98.72	114.37
3	B	202	TDA	C30-C29-C28	-2.28	102.83	114.37
4	A	401	ACY	O-C-CH3	-2.23	113.37	122.53

There are no chirality outliers.

All (15) torsion outliers are listed below:

Mol	Chain	Res	Type	Atoms
3	A	201	TDA	C21-C22-C23-C24
3	A	201	TDA	C26-C27-C28-C29
3	A	201	TDA	C28-C29-C30-C31
3	A	201	TDA	C23-C24-C25-C26
3	A	201	TDA	C22-C23-C24-C25
3	B	202	TDA	C23-C24-C25-C26
3	B	202	TDA	C30-C31-C32-C33
3	B	202	TDA	C21-C22-C23-C24
3	B	202	TDA	C28-C29-C30-C31
3	B	202	TDA	C24-C25-C26-C27
3	B	202	TDA	C26-C27-C28-C29
3	A	201	TDA	C24-C25-C26-C27
3	A	201	TDA	O21-C21-C22-C23
3	B	202	TDA	O21-C21-C22-C23
3	B	202	TDA	C22-C23-C24-C25

There are no ring outliers.

2 monomers are involved in 15 short contacts:

Mol	Chain	Res	Type	Clashes	Symm-Clashes
3	A	201	TDA	13	0
3	B	202	TDA	2	0

5.7 Other polymers [i](#)

There are no such residues in this entry.

5.8 Polymer linkage issues [i](#)

There are no chain breaks in this entry.

6 Fit of model and data

6.1 Protein, DNA and RNA chains

EDS was not executed - this section is therefore empty.

6.2 Non-standard residues in protein, DNA, RNA chains

EDS was not executed - this section is therefore empty.

6.3 Carbohydrates

EDS was not executed - this section is therefore empty.

6.4 Ligands

EDS was not executed - this section is therefore empty.

6.5 Other polymers

EDS was not executed - this section is therefore empty.