



## Full wwPDB EM Validation Report ⓘ

Mar 7, 2026 – 01:14 AM UTC

PDB ID : 7TP2 / pdb\_00007tp2  
EMDB ID : EMD-26046  
Title : Delta (B.1.617.2) SARS-CoV-2 variant spike protein (S-GSAS-Delta) in the 3-RBD-down conformation; Subclassification D10 state  
Authors : Gobeil, S.; Acharya, P.  
Deposited on : 2022-01-24  
Resolution : 3.72 Å (reported)  
Based on initial model : 7KDK

This is a Full wwPDB EM Validation Report for a publicly released PDB entry.

We welcome your comments at [validation@mail.wwpdb.org](mailto:validation@mail.wwpdb.org)

A user guide is available at

<https://www.wwpdb.org/validation/2017/EMValidationReportHelp>

with specific help available everywhere you see the ⓘ symbol.

The types of validation reports are described at

<http://www.wwpdb.org/validation/2017/FAQs#types>.

---

The following versions of software and data (see [references ⓘ](#)) were used in the production of this report:

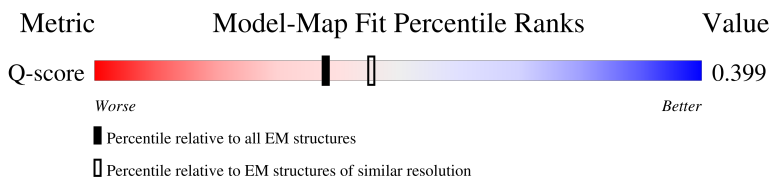
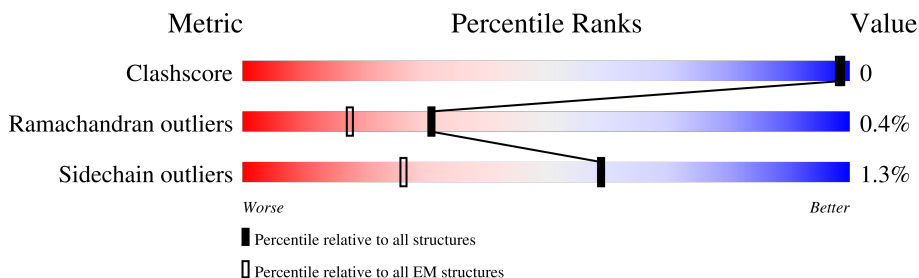
EMDB validation analysis : 0.0.1.dev132  
Mogul : 2022.3.0, CSD as543be (2022)  
MolProbity : 4-5-2 with Phenix2.0  
Percentile statistics : 20250101.v01 (using entries in the PDB archive January 1st 2025)  
EM percentile statistics : 202505.v01 (Using data in the EMDB archive up until May 2025)  
MapQ : 1.9.13  
Ideal geometry (proteins) : Engh & Huber (2001)  
Ideal geometry (DNA, RNA) : Parkinson et al. (1996)  
Validation Pipeline (wwPDB-VP) : 2.49

# 1 Overall quality at a glance i

The following experimental techniques were used to determine the structure:  
*ELECTRON MICROSCOPY*

The reported resolution of this entry is 3.72 Å.

Percentile scores (ranging between 0-100) for global validation metrics of the entry are shown in the following graphic. The table shows the number of entries on which the scores are based.



Metric	Whole archive (#Entries)	EM structures (#Entries)	Similar EM resolution (#Entries, resolution range(Å))
Clashscore	229148	23984	-
Ramachandran outliers	224038	23583	-
Sidechain outliers	223484	23102	-
Q-score	-	25397	10474 ( 3.22 - 4.22 )

The table below summarises the geometric issues observed across the polymeric chains and their fit to the map. The red, orange, yellow and green segments of the bar indicate the fraction of residues that contain outliers for  $\geq 3$ , 2, 1 and 0 types of geometric quality criteria respectively. A grey segment represents the fraction of residues that are not modelled. The numeric value for each fraction is indicated below the corresponding segment, with a dot representing fractions  $\leq 5\%$ . The upper red bar (where present) indicates the fraction of residues that have poor fit to the EM map (all-atom inclusion  $< 40\%$ ). The numeric value is given above the bar.

Mol	Chain	Length	Quality of chain
1	A	1286	77% 21%
1	B	1286	77% 21%
1	C	1286	77% 21%
2	D	2	100% 100%

Continued on next page...

*Continued from previous page...*

Mol	Chain	Length	Quality of chain
2	E	2	 100%
2	F	2	 50% 100%
2	G	2	 50% 100%
2	H	2	 50% 100%
2	I	2	 100%
2	J	2	 50% 100%
2	K	2	 50% 100%
2	L	2	 100%
2	M	2	 50% 100%
2	N	2	 100%
2	O	2	 100%
2	P	2	 50% 100%
2	Q	2	 100%

## 2 Entry composition i

There are 3 unique types of molecules in this entry. The entry contains 24663 atoms, of which 0 are hydrogens and 0 are deuteriums.

In the tables below, the AltConf column contains the number of residues with at least one atom in alternate conformation and the Trace column contains the number of residues modelled with at most 2 atoms.

- Molecule 1 is a protein called Spike glycoprotein.

Mol	Chain	Residues	Atoms					AltConf	Trace
			Total	C	N	O	S		
1	A	1017	7947	5074	1327	1511	35	0	0
1	B	1017	7946	5074	1327	1510	35	0	0
1	C	1013	7916	5055	1321	1505	35	0	0

There are 279 discrepancies between the modelled and reference sequences:

Chain	Residue	Modelled	Actual	Comment	Reference
A	19	ARG	THR	engineered mutation	UNP P0DTC2
A	142	ASP	GLY	engineered mutation	UNP P0DTC2
A	?	-	GLU	deletion	UNP P0DTC2
A	?	-	PHE	deletion	UNP P0DTC2
A	158	GLY	ARG	engineered mutation	UNP P0DTC2
A	452	ARG	LEU	engineered mutation	UNP P0DTC2
A	478	LYS	THR	engineered mutation	UNP P0DTC2
A	614	GLY	ASP	engineered mutation	UNP P0DTC2
A	681	ARG	PRO	engineered mutation	UNP P0DTC2
A	682	GLY	ARG	engineered mutation	UNP P0DTC2
A	683	SER	ARG	engineered mutation	UNP P0DTC2
A	685	SER	ARG	engineered mutation	UNP P0DTC2
A	950	ASN	ASP	engineered mutation	UNP P0DTC2
A	1209	GLY	-	expression tag	UNP P0DTC2
A	1210	SER	-	expression tag	UNP P0DTC2
A	1211	GLY	-	expression tag	UNP P0DTC2
A	1212	TYR	-	expression tag	UNP P0DTC2
A	1213	ILE	-	expression tag	UNP P0DTC2
A	1214	PRO	-	expression tag	UNP P0DTC2
A	1215	GLU	-	expression tag	UNP P0DTC2
A	1216	ALA	-	expression tag	UNP P0DTC2
A	1217	PRO	-	expression tag	UNP P0DTC2
A	1218	ARG	-	expression tag	UNP P0DTC2
A	1219	ASP	-	expression tag	UNP P0DTC2

*Continued on next page...*

*Continued from previous page...*

Chain	Residue	Modelled	Actual	Comment	Reference
A	1220	GLY	-	expression tag	UNP P0DTC2
A	1221	GLN	-	expression tag	UNP P0DTC2
A	1222	ALA	-	expression tag	UNP P0DTC2
A	1223	TYR	-	expression tag	UNP P0DTC2
A	1224	VAL	-	expression tag	UNP P0DTC2
A	1225	ARG	-	expression tag	UNP P0DTC2
A	1226	LYS	-	expression tag	UNP P0DTC2
A	1227	ASP	-	expression tag	UNP P0DTC2
A	1228	GLY	-	expression tag	UNP P0DTC2
A	1229	GLU	-	expression tag	UNP P0DTC2
A	1230	TRP	-	expression tag	UNP P0DTC2
A	1231	VAL	-	expression tag	UNP P0DTC2
A	1232	LEU	-	expression tag	UNP P0DTC2
A	1233	LEU	-	expression tag	UNP P0DTC2
A	1234	SER	-	expression tag	UNP P0DTC2
A	1235	THR	-	expression tag	UNP P0DTC2
A	1236	PHE	-	expression tag	UNP P0DTC2
A	1237	LEU	-	expression tag	UNP P0DTC2
A	1238	GLY	-	expression tag	UNP P0DTC2
A	1239	ARG	-	expression tag	UNP P0DTC2
A	1240	SER	-	expression tag	UNP P0DTC2
A	1241	LEU	-	expression tag	UNP P0DTC2
A	1242	GLU	-	expression tag	UNP P0DTC2
A	1243	VAL	-	expression tag	UNP P0DTC2
A	1244	LEU	-	expression tag	UNP P0DTC2
A	1245	PHE	-	expression tag	UNP P0DTC2
A	1246	GLN	-	expression tag	UNP P0DTC2
A	1247	GLY	-	expression tag	UNP P0DTC2
A	1248	PRO	-	expression tag	UNP P0DTC2
A	1249	GLY	-	expression tag	UNP P0DTC2
A	1250	HIS	-	expression tag	UNP P0DTC2
A	1251	HIS	-	expression tag	UNP P0DTC2
A	1252	HIS	-	expression tag	UNP P0DTC2
A	1253	HIS	-	expression tag	UNP P0DTC2
A	1254	HIS	-	expression tag	UNP P0DTC2
A	1255	HIS	-	expression tag	UNP P0DTC2
A	1256	HIS	-	expression tag	UNP P0DTC2
A	1257	HIS	-	expression tag	UNP P0DTC2
A	1258	SER	-	expression tag	UNP P0DTC2
A	1259	ALA	-	expression tag	UNP P0DTC2
A	1260	TRP	-	expression tag	UNP P0DTC2
A	1261	SER	-	expression tag	UNP P0DTC2

*Continued on next page...*

*Continued from previous page...*

Chain	Residue	Modelled	Actual	Comment	Reference
A	1262	HIS	-	expression tag	UNP P0DTC2
A	1263	PRO	-	expression tag	UNP P0DTC2
A	1264	GLN	-	expression tag	UNP P0DTC2
A	1265	PHE	-	expression tag	UNP P0DTC2
A	1266	GLU	-	expression tag	UNP P0DTC2
A	1267	LYS	-	expression tag	UNP P0DTC2
A	1268	GLY	-	expression tag	UNP P0DTC2
A	1269	GLY	-	expression tag	UNP P0DTC2
A	1270	GLY	-	expression tag	UNP P0DTC2
A	1271	SER	-	expression tag	UNP P0DTC2
A	1272	GLY	-	expression tag	UNP P0DTC2
A	1273	GLY	-	expression tag	UNP P0DTC2
A	1274	GLY	-	expression tag	UNP P0DTC2
A	1275	GLY	-	expression tag	UNP P0DTC2
A	1276	SER	-	expression tag	UNP P0DTC2
A	1277	GLY	-	expression tag	UNP P0DTC2
A	1278	GLY	-	expression tag	UNP P0DTC2
A	1279	SER	-	expression tag	UNP P0DTC2
A	1280	ALA	-	expression tag	UNP P0DTC2
A	1281	TRP	-	expression tag	UNP P0DTC2
A	1282	SER	-	expression tag	UNP P0DTC2
A	1283	HIS	-	expression tag	UNP P0DTC2
A	1284	PRO	-	expression tag	UNP P0DTC2
A	1285	GLN	-	expression tag	UNP P0DTC2
A	1286	PHE	-	expression tag	UNP P0DTC2
A	1287	GLU	-	expression tag	UNP P0DTC2
A	1288	LYS	-	expression tag	UNP P0DTC2
B	19	ARG	THR	engineered mutation	UNP P0DTC2
B	142	ASP	GLY	engineered mutation	UNP P0DTC2
B	?	-	GLU	deletion	UNP P0DTC2
B	?	-	PHE	deletion	UNP P0DTC2
B	158	GLY	ARG	engineered mutation	UNP P0DTC2
B	452	ARG	LEU	engineered mutation	UNP P0DTC2
B	478	LYS	THR	engineered mutation	UNP P0DTC2
B	614	GLY	ASP	engineered mutation	UNP P0DTC2
B	681	ARG	PRO	engineered mutation	UNP P0DTC2
B	682	GLY	ARG	engineered mutation	UNP P0DTC2
B	683	SER	ARG	engineered mutation	UNP P0DTC2
B	685	SER	ARG	engineered mutation	UNP P0DTC2
B	950	ASN	ASP	engineered mutation	UNP P0DTC2
B	1209	GLY	-	expression tag	UNP P0DTC2
B	1210	SER	-	expression tag	UNP P0DTC2

*Continued on next page...*

*Continued from previous page...*

Chain	Residue	Modelled	Actual	Comment	Reference
B	1211	GLY	-	expression tag	UNP P0DTC2
B	1212	TYR	-	expression tag	UNP P0DTC2
B	1213	ILE	-	expression tag	UNP P0DTC2
B	1214	PRO	-	expression tag	UNP P0DTC2
B	1215	GLU	-	expression tag	UNP P0DTC2
B	1216	ALA	-	expression tag	UNP P0DTC2
B	1217	PRO	-	expression tag	UNP P0DTC2
B	1218	ARG	-	expression tag	UNP P0DTC2
B	1219	ASP	-	expression tag	UNP P0DTC2
B	1220	GLY	-	expression tag	UNP P0DTC2
B	1221	GLN	-	expression tag	UNP P0DTC2
B	1222	ALA	-	expression tag	UNP P0DTC2
B	1223	TYR	-	expression tag	UNP P0DTC2
B	1224	VAL	-	expression tag	UNP P0DTC2
B	1225	ARG	-	expression tag	UNP P0DTC2
B	1226	LYS	-	expression tag	UNP P0DTC2
B	1227	ASP	-	expression tag	UNP P0DTC2
B	1228	GLY	-	expression tag	UNP P0DTC2
B	1229	GLU	-	expression tag	UNP P0DTC2
B	1230	TRP	-	expression tag	UNP P0DTC2
B	1231	VAL	-	expression tag	UNP P0DTC2
B	1232	LEU	-	expression tag	UNP P0DTC2
B	1233	LEU	-	expression tag	UNP P0DTC2
B	1234	SER	-	expression tag	UNP P0DTC2
B	1235	THR	-	expression tag	UNP P0DTC2
B	1236	PHE	-	expression tag	UNP P0DTC2
B	1237	LEU	-	expression tag	UNP P0DTC2
B	1238	GLY	-	expression tag	UNP P0DTC2
B	1239	ARG	-	expression tag	UNP P0DTC2
B	1240	SER	-	expression tag	UNP P0DTC2
B	1241	LEU	-	expression tag	UNP P0DTC2
B	1242	GLU	-	expression tag	UNP P0DTC2
B	1243	VAL	-	expression tag	UNP P0DTC2
B	1244	LEU	-	expression tag	UNP P0DTC2
B	1245	PHE	-	expression tag	UNP P0DTC2
B	1246	GLN	-	expression tag	UNP P0DTC2
B	1247	GLY	-	expression tag	UNP P0DTC2
B	1248	PRO	-	expression tag	UNP P0DTC2
B	1249	GLY	-	expression tag	UNP P0DTC2
B	1250	HIS	-	expression tag	UNP P0DTC2
B	1251	HIS	-	expression tag	UNP P0DTC2
B	1252	HIS	-	expression tag	UNP P0DTC2

*Continued on next page...*

*Continued from previous page...*

Chain	Residue	Modelled	Actual	Comment	Reference
B	1253	HIS	-	expression tag	UNP P0DTC2
B	1254	HIS	-	expression tag	UNP P0DTC2
B	1255	HIS	-	expression tag	UNP P0DTC2
B	1256	HIS	-	expression tag	UNP P0DTC2
B	1257	HIS	-	expression tag	UNP P0DTC2
B	1258	SER	-	expression tag	UNP P0DTC2
B	1259	ALA	-	expression tag	UNP P0DTC2
B	1260	TRP	-	expression tag	UNP P0DTC2
B	1261	SER	-	expression tag	UNP P0DTC2
B	1262	HIS	-	expression tag	UNP P0DTC2
B	1263	PRO	-	expression tag	UNP P0DTC2
B	1264	GLN	-	expression tag	UNP P0DTC2
B	1265	PHE	-	expression tag	UNP P0DTC2
B	1266	GLU	-	expression tag	UNP P0DTC2
B	1267	LYS	-	expression tag	UNP P0DTC2
B	1268	GLY	-	expression tag	UNP P0DTC2
B	1269	GLY	-	expression tag	UNP P0DTC2
B	1270	GLY	-	expression tag	UNP P0DTC2
B	1271	SER	-	expression tag	UNP P0DTC2
B	1272	GLY	-	expression tag	UNP P0DTC2
B	1273	GLY	-	expression tag	UNP P0DTC2
B	1274	GLY	-	expression tag	UNP P0DTC2
B	1275	GLY	-	expression tag	UNP P0DTC2
B	1276	SER	-	expression tag	UNP P0DTC2
B	1277	GLY	-	expression tag	UNP P0DTC2
B	1278	GLY	-	expression tag	UNP P0DTC2
B	1279	SER	-	expression tag	UNP P0DTC2
B	1280	ALA	-	expression tag	UNP P0DTC2
B	1281	TRP	-	expression tag	UNP P0DTC2
B	1282	SER	-	expression tag	UNP P0DTC2
B	1283	HIS	-	expression tag	UNP P0DTC2
B	1284	PRO	-	expression tag	UNP P0DTC2
B	1285	GLN	-	expression tag	UNP P0DTC2
B	1286	PHE	-	expression tag	UNP P0DTC2
B	1287	GLU	-	expression tag	UNP P0DTC2
B	1288	LYS	-	expression tag	UNP P0DTC2
C	19	ARG	THR	engineered mutation	UNP P0DTC2
C	142	ASP	GLY	engineered mutation	UNP P0DTC2
C	?	-	GLU	deletion	UNP P0DTC2
C	?	-	PHE	deletion	UNP P0DTC2
C	158	GLY	ARG	engineered mutation	UNP P0DTC2
C	452	ARG	LEU	engineered mutation	UNP P0DTC2

*Continued on next page...*

*Continued from previous page...*

Chain	Residue	Modelled	Actual	Comment	Reference
C	478	LYS	THR	engineered mutation	UNP P0DTC2
C	614	GLY	ASP	engineered mutation	UNP P0DTC2
C	681	ARG	PRO	engineered mutation	UNP P0DTC2
C	682	GLY	ARG	engineered mutation	UNP P0DTC2
C	683	SER	ARG	engineered mutation	UNP P0DTC2
C	685	SER	ARG	engineered mutation	UNP P0DTC2
C	950	ASN	ASP	engineered mutation	UNP P0DTC2
C	1209	GLY	-	expression tag	UNP P0DTC2
C	1210	SER	-	expression tag	UNP P0DTC2
C	1211	GLY	-	expression tag	UNP P0DTC2
C	1212	TYR	-	expression tag	UNP P0DTC2
C	1213	ILE	-	expression tag	UNP P0DTC2
C	1214	PRO	-	expression tag	UNP P0DTC2
C	1215	GLU	-	expression tag	UNP P0DTC2
C	1216	ALA	-	expression tag	UNP P0DTC2
C	1217	PRO	-	expression tag	UNP P0DTC2
C	1218	ARG	-	expression tag	UNP P0DTC2
C	1219	ASP	-	expression tag	UNP P0DTC2
C	1220	GLY	-	expression tag	UNP P0DTC2
C	1221	GLN	-	expression tag	UNP P0DTC2
C	1222	ALA	-	expression tag	UNP P0DTC2
C	1223	TYR	-	expression tag	UNP P0DTC2
C	1224	VAL	-	expression tag	UNP P0DTC2
C	1225	ARG	-	expression tag	UNP P0DTC2
C	1226	LYS	-	expression tag	UNP P0DTC2
C	1227	ASP	-	expression tag	UNP P0DTC2
C	1228	GLY	-	expression tag	UNP P0DTC2
C	1229	GLU	-	expression tag	UNP P0DTC2
C	1230	TRP	-	expression tag	UNP P0DTC2
C	1231	VAL	-	expression tag	UNP P0DTC2
C	1232	LEU	-	expression tag	UNP P0DTC2
C	1233	LEU	-	expression tag	UNP P0DTC2
C	1234	SER	-	expression tag	UNP P0DTC2
C	1235	THR	-	expression tag	UNP P0DTC2
C	1236	PHE	-	expression tag	UNP P0DTC2
C	1237	LEU	-	expression tag	UNP P0DTC2
C	1238	GLY	-	expression tag	UNP P0DTC2
C	1239	ARG	-	expression tag	UNP P0DTC2
C	1240	SER	-	expression tag	UNP P0DTC2
C	1241	LEU	-	expression tag	UNP P0DTC2
C	1242	GLU	-	expression tag	UNP P0DTC2
C	1243	VAL	-	expression tag	UNP P0DTC2

*Continued on next page...*

*Continued from previous page...*

Chain	Residue	Modelled	Actual	Comment	Reference
C	1244	LEU	-	expression tag	UNP P0DTC2
C	1245	PHE	-	expression tag	UNP P0DTC2
C	1246	GLN	-	expression tag	UNP P0DTC2
C	1247	GLY	-	expression tag	UNP P0DTC2
C	1248	PRO	-	expression tag	UNP P0DTC2
C	1249	GLY	-	expression tag	UNP P0DTC2
C	1250	HIS	-	expression tag	UNP P0DTC2
C	1251	HIS	-	expression tag	UNP P0DTC2
C	1252	HIS	-	expression tag	UNP P0DTC2
C	1253	HIS	-	expression tag	UNP P0DTC2
C	1254	HIS	-	expression tag	UNP P0DTC2
C	1255	HIS	-	expression tag	UNP P0DTC2
C	1256	HIS	-	expression tag	UNP P0DTC2
C	1257	HIS	-	expression tag	UNP P0DTC2
C	1258	SER	-	expression tag	UNP P0DTC2
C	1259	ALA	-	expression tag	UNP P0DTC2
C	1260	TRP	-	expression tag	UNP P0DTC2
C	1261	SER	-	expression tag	UNP P0DTC2
C	1262	HIS	-	expression tag	UNP P0DTC2
C	1263	PRO	-	expression tag	UNP P0DTC2
C	1264	GLN	-	expression tag	UNP P0DTC2
C	1265	PHE	-	expression tag	UNP P0DTC2
C	1266	GLU	-	expression tag	UNP P0DTC2
C	1267	LYS	-	expression tag	UNP P0DTC2
C	1268	GLY	-	expression tag	UNP P0DTC2
C	1269	GLY	-	expression tag	UNP P0DTC2
C	1270	GLY	-	expression tag	UNP P0DTC2
C	1271	SER	-	expression tag	UNP P0DTC2
C	1272	GLY	-	expression tag	UNP P0DTC2
C	1273	GLY	-	expression tag	UNP P0DTC2
C	1274	GLY	-	expression tag	UNP P0DTC2
C	1275	GLY	-	expression tag	UNP P0DTC2
C	1276	SER	-	expression tag	UNP P0DTC2
C	1277	GLY	-	expression tag	UNP P0DTC2
C	1278	GLY	-	expression tag	UNP P0DTC2
C	1279	SER	-	expression tag	UNP P0DTC2
C	1280	ALA	-	expression tag	UNP P0DTC2
C	1281	TRP	-	expression tag	UNP P0DTC2
C	1282	SER	-	expression tag	UNP P0DTC2
C	1283	HIS	-	expression tag	UNP P0DTC2
C	1284	PRO	-	expression tag	UNP P0DTC2
C	1285	GLN	-	expression tag	UNP P0DTC2

*Continued on next page...*

Continued from previous page...

Chain	Residue	Modelled	Actual	Comment	Reference
C	1286	PHE	-	expression tag	UNP P0DTC2
C	1287	GLU	-	expression tag	UNP P0DTC2
C	1288	LYS	-	expression tag	UNP P0DTC2

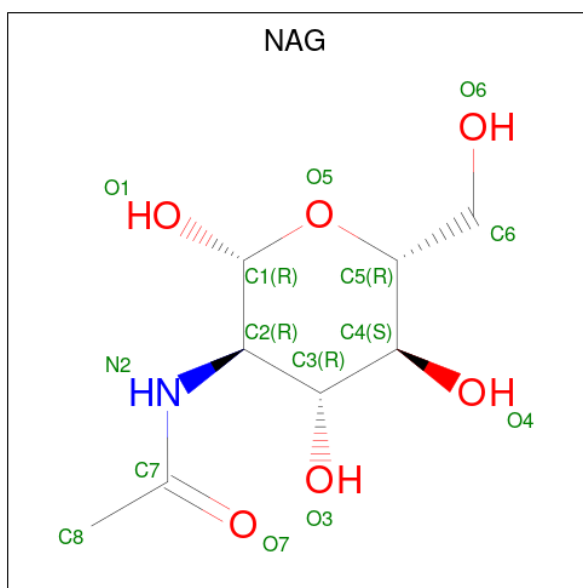
- Molecule 2 is an oligosaccharide called 2-acetamido-2-deoxy-beta-D-glucopyranose-(1-4)-2-acetamido-2-deoxy-beta-D-glucopyranose.



Mol	Chain	Residues	Atoms				AltConf	Trace
			Total	C	N	O		
2	D	2	28	16	2	10	0	0
2	E	2	28	16	2	10	0	0
2	F	2	28	16	2	10	0	0
2	G	2	28	16	2	10	0	0
2	H	2	28	16	2	10	0	0
2	I	2	28	16	2	10	0	0
2	J	2	28	16	2	10	0	0
2	K	2	28	16	2	10	0	0
2	L	2	28	16	2	10	0	0
2	M	2	28	16	2	10	0	0
2	N	2	28	16	2	10	0	0
2	O	2	28	16	2	10	0	0
2	P	2	28	16	2	10	0	0
2	Q	2	28	16	2	10	0	0

- Molecule 3 is 2-acetamido-2-deoxy-beta-D-glucopyranose (CCD ID: NAG) (formula:

C<sub>8</sub>H<sub>15</sub>NO<sub>6</sub>).



Mol	Chain	Residues	Atoms				AltConf
			Total	C	N	O	
3	A	1	Total 14	8	1	5	0
3	A	1	Total 14	8	1	5	0
3	A	1	Total 14	8	1	5	0
3	A	1	Total 14	8	1	5	0
3	A	1	Total 14	8	1	5	0
3	A	1	Total 14	8	1	5	0
3	A	1	Total 14	8	1	5	0
3	A	1	Total 14	8	1	5	0
3	A	1	Total 14	8	1	5	0
3	A	1	Total 14	8	1	5	0
3	A	1	Total 14	8	1	5	0
3	B	1	Total 14	8	1	5	0
3	B	1	Total 14	8	1	5	0

*Continued on next page...*

*Continued from previous page...*


Mol	Chain	Residues	Atoms				AltConf
			Total	C	N	O	
3	B	1	Total 14	C 8	N 1	O 5	0
3	B	1	Total 14	C 8	N 1	O 5	0
3	B	1	Total 14	C 8	N 1	O 5	0
3	B	1	Total 14	C 8	N 1	O 5	0
3	B	1	Total 14	C 8	N 1	O 5	0
3	B	1	Total 14	C 8	N 1	O 5	0
3	B	1	Total 14	C 8	N 1	O 5	0
3	B	1	Total 14	C 8	N 1	O 5	0
3	B	1	Total 14	C 8	N 1	O 5	0
3	C	1	Total 14	C 8	N 1	O 5	0
3	C	1	Total 14	C 8	N 1	O 5	0
3	C	1	Total 14	C 8	N 1	O 5	0
3	C	1	Total 14	C 8	N 1	O 5	0
3	C	1	Total 14	C 8	N 1	O 5	0
3	C	1	Total 14	C 8	N 1	O 5	0
3	C	1	Total 14	C 8	N 1	O 5	0
3	C	1	Total 14	C 8	N 1	O 5	0
3	C	1	Total 14	C 8	N 1	O 5	0
3	C	1	Total 14	C 8	N 1	O 5	0
3	C	1	Total 14	C 8	N 1	O 5	0







- Molecule 2: 2-acetamido-2-deoxy-beta-D-glucopyranose-(1-4)-2-acetamido-2-deoxy-beta-D-glucopyranose

Chain E:  100%



- Molecule 2: 2-acetamido-2-deoxy-beta-D-glucopyranose-(1-4)-2-acetamido-2-deoxy-beta-D-glucopyranose

Chain F:  50%  
100%



- Molecule 2: 2-acetamido-2-deoxy-beta-D-glucopyranose-(1-4)-2-acetamido-2-deoxy-beta-D-glucopyranose

Chain G:  50%  
100%



- Molecule 2: 2-acetamido-2-deoxy-beta-D-glucopyranose-(1-4)-2-acetamido-2-deoxy-beta-D-glucopyranose

Chain H:  50%  
100%



- Molecule 2: 2-acetamido-2-deoxy-beta-D-glucopyranose-(1-4)-2-acetamido-2-deoxy-beta-D-glucopyranose

Chain I:  100%  
100%



- Molecule 2: 2-acetamido-2-deoxy-beta-D-glucopyranose-(1-4)-2-acetamido-2-deoxy-beta-D-glucopyranose

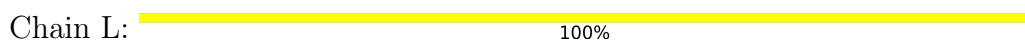
Chain J:  50%  
100%



- Molecule 2: 2-acetamido-2-deoxy-beta-D-glucopyranose-(1-4)-2-acetamido-2-deoxy-beta-D-glucopyranose



- Molecule 2: 2-acetamido-2-deoxy-beta-D-glucopyranose-(1-4)-2-acetamido-2-deoxy-beta-D-glucopyranose



- Molecule 2: 2-acetamido-2-deoxy-beta-D-glucopyranose-(1-4)-2-acetamido-2-deoxy-beta-D-glucopyranose



- Molecule 2: 2-acetamido-2-deoxy-beta-D-glucopyranose-(1-4)-2-acetamido-2-deoxy-beta-D-glucopyranose



- Molecule 2: 2-acetamido-2-deoxy-beta-D-glucopyranose-(1-4)-2-acetamido-2-deoxy-beta-D-glucopyranose



- Molecule 2: 2-acetamido-2-deoxy-beta-D-glucopyranose-(1-4)-2-acetamido-2-deoxy-beta-D-glucopyranose



  
NAG1  
NAG2

- Molecule 2: 2-acetamido-2-deoxy-beta-D-glucofuranose-(1-4)-2-acetamido-2-deoxy-beta-D-glucopyranose

Chain Q:

  
100%NAG1  
NAG2

## 4 Experimental information

Property	Value	Source
EM reconstruction method	SINGLE PARTICLE	Depositor
Imposed symmetry	POINT, Not provided	
Number of particles used	63417	Depositor
Resolution determination method	FSC 0.143 CUT-OFF	Depositor
CTF correction method	PHASE FLIPPING AND AMPLITUDE CORRECTION	Depositor
Microscope	FEI TITAN KRIOS	Depositor
Voltage (kV)	300	Depositor
Electron dose ( $e^-/\text{\AA}^2$ )	55	Depositor
Minimum defocus (nm)	750	Depositor
Maximum defocus (nm)	2500	Depositor
Magnification	Not provided	
Image detector	GATAN K3 (6k x 4k)	Depositor
Maximum map value	3.152	Depositor
Minimum map value	-0.829	Depositor
Average map value	-0.003	Depositor
Map value standard deviation	0.132	Depositor
Recommended contour level	0.8	Depositor
Map size (Å)	324.0, 324.0, 324.0	wwPDB
Map dimensions	300, 300, 300	wwPDB
Map angles (°)	90.0, 90.0, 90.0	wwPDB
Pixel spacing (Å)	1.08, 1.08, 1.08	Depositor

## 5 Model quality i

### 5.1 Standard geometry i

Bond lengths and bond angles in the following residue types are not validated in this section:  
NAG

The Z score for a bond length (or angle) is the number of standard deviations the observed value is removed from the expected value. A bond length (or angle) with  $|Z| > 5$  is considered an outlier worth inspection. RMSZ is the root-mean-square of all Z scores of the bond lengths (or angles).

Mol	Chain	Bond lengths		Bond angles	
		RMSZ	# Z  >5	RMSZ	# Z  >5
1	A	0.71	0/8126	1.23	3/11055 (0.0%)
1	B	0.71	0/8125	1.22	3/11054 (0.0%)
1	C	0.71	0/8094	1.21	6/11011 (0.1%)
All	All	0.71	0/24345	1.22	12/33120 (0.0%)

Chiral center outliers are detected by calculating the chiral volume of a chiral center and verifying if the center is modelled as a planar moiety or with the opposite hand. A planarity outlier is detected by checking planarity of atoms in a peptide group, atoms in a mainchain group or atoms of a sidechain that are expected to be planar.

Mol	Chain	#Chirality outliers	#Planarity outliers
1	A	0	4
1	B	0	4
1	C	0	3
All	All	0	11

There are no bond length outliers.

All (12) bond angle outliers are listed below:

Mol	Chain	Res	Type	Atoms	Z	Observed(°)	Ideal(°)
1	B	622	VAL	CA-CB-CG1	13.32	133.04	110.40
1	C	391	CYS	N-CA-C	6.94	119.31	108.96
1	A	391	CYS	N-CA-C	6.40	118.49	108.96
1	B	391	CYS	N-CA-C	6.15	118.12	108.96
1	C	559	PHE	CA-CB-CG	5.65	119.45	113.80
1	C	456	PHE	CA-CB-CG	5.54	119.34	113.80
1	C	81	ASN	CA-CB-CG	5.48	118.08	112.60
1	A	422	ASN	CA-CB-CG	5.47	118.07	112.60
1	C	142	ASP	CA-CB-CG	5.20	117.80	112.60
1	B	796	ASP	CA-CB-CG	5.18	117.78	112.60

*Continued on next page...*

*Continued from previous page...*

Mol	Chain	Res	Type	Atoms	Z	Observed(°)	Ideal(°)
1	A	578	ASP	CB-CA-C	5.05	117.36	109.42
1	C	641	ASN	CA-CB-CG	5.02	117.62	112.60

There are no chirality outliers.

All (11) planarity outliers are listed below:

Mol	Chain	Res	Type	Group
1	A	1039	ARG	Sidechain
1	A	135	PHE	Peptide
1	A	789	TYR	Sidechain
1	A	983	ARG	Sidechain
1	B	355	ARG	Sidechain
1	B	495	TYR	Sidechain
1	B	636	TYR	Sidechain
1	B	707	TYR	Sidechain
1	C	328	ARG	Sidechain
1	C	34	ARG	Sidechain
1	C	451	TYR	Sidechain

## 5.2 Too-close contacts [i](#)

In the following table, the Non-H and H(model) columns list the number of non-hydrogen atoms and hydrogen atoms in the chain respectively. The H(added) column lists the number of hydrogen atoms added and optimized by MolProbity. The Clashes column lists the number of clashes within the asymmetric unit, whereas Symm-Clashes lists symmetry-related clashes.

Mol	Chain	Non-H	H(model)	H(added)	Clashes	Symm-Clashes
1	A	7947	0	7751	5	0
1	B	7946	0	7754	2	0
1	C	7916	0	7725	3	0
2	D	28	0	25	0	0
2	E	28	0	25	0	0
2	F	28	0	25	0	0
2	G	28	0	25	0	0
2	H	28	0	25	0	0
2	I	28	0	25	0	0
2	J	28	0	25	0	0
2	K	28	0	25	0	0
2	L	28	0	25	0	0
2	M	28	0	25	0	0
2	N	28	0	25	0	0

*Continued on next page...*

Continued from previous page...

Mol	Chain	Non-H	H(model)	H(added)	Clashes	Symm-Clashes
2	O	28	0	25	0	0
2	P	28	0	25	0	0
2	Q	28	0	25	0	0
3	A	154	0	143	0	0
3	B	154	0	143	0	0
3	C	154	0	143	0	0
All	All	24663	0	24009	10	0

The all-atom clashscore is defined as the number of clashes found per 1000 atoms (including hydrogen atoms). The all-atom clashscore for this structure is 0.

All (10) close contacts within the same asymmetric unit are listed below, sorted by their clash magnitude.

Atom-1	Atom-2	Interatomic distance (Å)	Clash overlap (Å)
1:A:391:CYS:HB2	1:A:525:CYS:HA	1.85	0.59
1:C:391:CYS:HB2	1:C:525:CYS:HA	1.88	0.55
1:C:748:GLU:CD	1:C:748:GLU:H	2.24	0.45
1:B:391:CYS:CB	1:B:525:CYS:HA	2.48	0.42
1:A:404:GLY:HA3	1:A:508:TYR:CD1	2.55	0.42
1:C:353:TRP:CD1	1:C:466:ARG:HH21	2.37	0.41
1:A:620:VAL:H	1:A:621:PRO:CD	2.34	0.41
1:B:216:LEU:HA	1:B:217:PRO:HD3	1.96	0.41
1:A:200:TYR:CD1	1:A:230:PRO:HA	2.55	0.40
1:A:431:GLY:HA2	1:A:515:PHE:CD2	2.57	0.40

There are no symmetry-related clashes.

## 5.3 Torsion angles [i](#)

### 5.3.1 Protein backbone [i](#)

In the following table, the Percentiles column shows the percent Ramachandran outliers of the chain as a percentile score with respect to all PDB entries followed by that with respect to all EM entries.

The Analysed column shows the number of residues for which the backbone conformation was analysed, and the total number of residues.

Mol	Chain	Analysed	Favoured	Allowed	Outliers	Percentiles
1	A	1001/1286 (78%)	932 (93%)	65 (6%)	4 (0%)	30 60

Continued on next page...

Continued from previous page...

Mol	Chain	Analysed	Favoured	Allowed	Outliers	Percentiles
1	B	1001/1286 (78%)	922 (92%)	75 (8%)	4 (0%)	30 60
1	C	997/1286 (78%)	918 (92%)	75 (8%)	4 (0%)	30 60
All	All	2999/3858 (78%)	2772 (92%)	215 (7%)	12 (0%)	31 60

All (12) Ramachandran outliers are listed below:

Mol	Chain	Res	Type
1	A	621	PRO
1	A	167	THR
1	B	624	ILE
1	C	457	ARG
1	A	625	HIS
1	B	663	ASP
1	C	487	ASN
1	B	97	LYS
1	B	489	TYR
1	C	110	LEU
1	A	620	VAL
1	C	1093	GLY

### 5.3.2 Protein sidechains [i](#)

In the following table, the Percentiles column shows the percent sidechain outliers of the chain as a percentile score with respect to all PDB entries followed by that with respect to all EM entries.

The Analysed column shows the number of residues for which the sidechain conformation was analysed, and the total number of residues.

Mol	Chain	Analysed	Rotameric	Outliers	Percentiles
1	A	888/1110 (80%)	873 (98%)	15 (2%)	53 67
1	B	888/1110 (80%)	878 (99%)	10 (1%)	65 73
1	C	885/1110 (80%)	875 (99%)	10 (1%)	65 73
All	All	2661/3330 (80%)	2626 (99%)	35 (1%)	59 71

All (35) residues with a non-rotameric sidechain are listed below:

Mol	Chain	Res	Type
1	A	307	THR
1	A	318	PHE

Continued on next page...

*Continued from previous page...*

Mol	Chain	Res	Type
1	A	366	SER
1	A	458	LYS
1	A	470	THR
1	A	547	THR
1	A	578	ASP
1	A	624	ILE
1	A	738	CYS
1	A	739	THR
1	A	752	LEU
1	A	886	TRP
1	A	907	ASN
1	A	1082	CYS
1	A	1084	ASP
1	B	96	GLU
1	B	286	THR
1	B	294	ASP
1	B	546	LEU
1	B	622	VAL
1	B	675	GLN
1	B	705	VAL
1	B	760	CYS
1	B	907	ASN
1	B	1094	VAL
1	C	112	SER
1	C	142	ASP
1	C	324	GLU
1	C	422	ASN
1	C	457	ARG
1	C	459	SER
1	C	523	THR
1	C	641	ASN
1	C	646	ARG
1	C	907	ASN

Sometimes sidechains can be flipped to improve hydrogen bonding and reduce clashes. All (39) such sidechains are listed below:

Mol	Chain	Res	Type
1	A	52	GLN
1	A	448	ASN
1	A	606	ASN
1	A	779	GLN
1	A	804	GLN

*Continued on next page...*

*Continued from previous page...*

Mol	Chain	Res	Type
1	A	907	ASN
1	A	913	GLN
1	A	957	GLN
1	A	969	ASN
1	B	188	ASN
1	B	245	HIS
1	B	321	GLN
1	B	360	ASN
1	B	450	ASN
1	B	460	ASN
1	B	498	GLN
1	B	540	ASN
1	B	544	ASN
1	B	675	GLN
1	B	907	ASN
1	B	913	GLN
1	B	1002	GLN
1	B	1010	GLN
1	B	1083	HIS
1	C	52	GLN
1	C	196	ASN
1	C	317	ASN
1	C	450	ASN
1	C	460	ASN
1	C	498	GLN
1	C	606	ASN
1	C	690	GLN
1	C	751	ASN
1	C	762	GLN
1	C	764	ASN
1	C	913	GLN
1	C	969	ASN
1	C	1005	GLN
1	C	1142	GLN

### 5.3.3 RNA [i](#)

There are no RNA molecules in this entry.

### 5.4 Non-standard residues in protein, DNA, RNA chains [i](#)

There are no non-standard protein/DNA/RNA residues in this entry.

## 5.5 Carbohydrates i

28 monosaccharides are modelled in this entry.

In the following table, the Counts columns list the number of bonds (or angles) for which Mogul statistics could be retrieved, the number of bonds (or angles) that are observed in the model and the number of bonds (or angles) that are defined in the Chemical Component Dictionary. The Link column lists molecule types, if any, to which the group is linked. The Z score for a bond length (or angle) is the number of standard deviations the observed value is removed from the expected value. A bond length (or angle) with  $|Z| > 2$  is considered an outlier worth inspection. RMSZ is the root-mean-square of all Z scores of the bond lengths (or angles).

Mol	Type	Chain	Res	Link	Bond lengths			Bond angles		
					Counts	RMSZ	# Z  > 2	Counts	RMSZ	# Z  > 2
2	NAG	D	1	2,1	14,14,15	1.41	2 (14%)	17,19,21	0.97	2 (11%)
2	NAG	D	2	2	14,14,15	1.33	3 (21%)	17,19,21	0.83	0
2	NAG	E	1	2,1	14,14,15	1.06	1 (7%)	17,19,21	0.72	0
2	NAG	E	2	2	14,14,15	1.16	1 (7%)	17,19,21	0.98	2 (11%)
2	NAG	F	1	2,1	14,14,15	1.12	1 (7%)	17,19,21	0.69	0
2	NAG	F	2	2	14,14,15	1.21	1 (7%)	17,19,21	0.78	0
2	NAG	G	1	2,1	14,14,15	1.13	1 (7%)	17,19,21	1.02	2 (11%)
2	NAG	G	2	2	14,14,15	1.21	1 (7%)	17,19,21	0.74	0
2	NAG	H	1	2,1	14,14,15	1.22	1 (7%)	17,19,21	0.83	1 (5%)
2	NAG	H	2	2	14,14,15	1.26	2 (14%)	17,19,21	0.83	1 (5%)
2	NAG	I	1	2,1	14,14,15	1.19	1 (7%)	17,19,21	0.91	2 (11%)
2	NAG	I	2	2	14,14,15	1.25	2 (14%)	17,19,21	0.94	1 (5%)
2	NAG	J	1	2,1	14,14,15	1.09	1 (7%)	17,19,21	0.78	0
2	NAG	J	2	2	14,14,15	1.20	1 (7%)	17,19,21	0.82	0
2	NAG	K	1	2,1	14,14,15	1.12	1 (7%)	17,19,21	0.77	0
2	NAG	K	2	2	14,14,15	1.20	1 (7%)	17,19,21	0.74	1 (5%)
2	NAG	L	1	2,1	14,14,15	1.15	1 (7%)	17,19,21	0.76	0
2	NAG	L	2	2	14,14,15	1.19	1 (7%)	17,19,21	0.67	0
2	NAG	M	1	2,1	14,14,15	1.25	1 (7%)	17,19,21	1.09	1 (5%)
2	NAG	M	2	2	14,14,15	1.22	1 (7%)	17,19,21	0.82	1 (5%)
2	NAG	N	1	2,1	14,14,15	1.24	1 (7%)	17,19,21	0.88	0
2	NAG	N	2	2	14,14,15	1.42	2 (14%)	17,19,21	0.88	1 (5%)
2	NAG	O	1	2,1	14,14,15	1.15	1 (7%)	17,19,21	0.85	0
2	NAG	O	2	2	14,14,15	1.21	1 (7%)	17,19,21	0.58	0
2	NAG	P	1	2,1	14,14,15	1.20	1 (7%)	17,19,21	0.70	0
2	NAG	P	2	2	14,14,15	1.19	1 (7%)	17,19,21	0.84	1 (5%)

Mol	Type	Chain	Res	Link	Bond lengths			Bond angles		
					Counts	RMSZ	# Z  > 2	Counts	RMSZ	# Z  > 2
2	NAG	Q	1	2,1	14,14,15	1.16	1 (7%)	17,19,21	0.87	1 (5%)
2	NAG	Q	2	2	14,14,15	1.23	1 (7%)	17,19,21	0.81	0

In the following table, the Chirals column lists the number of chiral outliers, the number of chiral centers analysed, the number of these observed in the model and the number defined in the Chemical Component Dictionary. Similar counts are reported in the Torsion and Rings columns. '-' means no outliers of that kind were identified.

Mol	Type	Chain	Res	Link	Chirals	Torsions	Rings
2	NAG	D	1	2,1	-	2/6/23/26	0/1/1/1
2	NAG	D	2	2	-	0/6/23/26	0/1/1/1
2	NAG	E	1	2,1	-	0/6/23/26	0/1/1/1
2	NAG	E	2	2	-	0/6/23/26	0/1/1/1
2	NAG	F	1	2,1	-	0/6/23/26	0/1/1/1
2	NAG	F	2	2	-	0/6/23/26	0/1/1/1
2	NAG	G	1	2,1	-	0/6/23/26	0/1/1/1
2	NAG	G	2	2	-	0/6/23/26	0/1/1/1
2	NAG	H	1	2,1	-	0/6/23/26	0/1/1/1
2	NAG	H	2	2	-	0/6/23/26	0/1/1/1
2	NAG	I	1	2,1	-	1/6/23/26	0/1/1/1
2	NAG	I	2	2	-	0/6/23/26	0/1/1/1
2	NAG	J	1	2,1	-	0/6/23/26	0/1/1/1
2	NAG	J	2	2	-	0/6/23/26	0/1/1/1
2	NAG	K	1	2,1	-	0/6/23/26	0/1/1/1
2	NAG	K	2	2	-	0/6/23/26	0/1/1/1
2	NAG	L	1	2,1	-	0/6/23/26	0/1/1/1
2	NAG	L	2	2	-	0/6/23/26	0/1/1/1
2	NAG	M	1	2,1	-	0/6/23/26	0/1/1/1
2	NAG	M	2	2	-	0/6/23/26	0/1/1/1
2	NAG	N	1	2,1	-	0/6/23/26	0/1/1/1
2	NAG	N	2	2	-	0/6/23/26	0/1/1/1
2	NAG	O	1	2,1	-	0/6/23/26	0/1/1/1
2	NAG	O	2	2	-	0/6/23/26	0/1/1/1
2	NAG	P	1	2,1	-	0/6/23/26	0/1/1/1
2	NAG	P	2	2	-	0/6/23/26	0/1/1/1
2	NAG	Q	1	2,1	-	0/6/23/26	0/1/1/1
2	NAG	Q	2	2	-	0/6/23/26	0/1/1/1

All (34) bond length outliers are listed below:

Mol	Chain	Res	Type	Atoms	Z	Observed(Å)	Ideal(Å)
2	D	1	NAG	O5-C5	3.12	1.49	1.43

*Continued on next page...*

*Continued from previous page...*

Mol	Chain	Res	Type	Atoms	Z	Observed(Å)	Ideal(Å)
2	N	2	NAG	O5-C5	3.11	1.49	1.43
2	Q	2	NAG	O5-C5	2.98	1.49	1.43
2	D	2	NAG	O5-C5	2.85	1.49	1.43
2	M	1	NAG	O5-C5	2.85	1.49	1.43
2	H	2	NAG	O5-C5	2.81	1.48	1.43
2	N	2	NAG	O5-C1	2.78	1.48	1.43
2	M	2	NAG	O5-C5	2.78	1.48	1.43
2	J	2	NAG	O5-C5	2.77	1.48	1.43
2	O	2	NAG	O5-C5	2.75	1.48	1.43
2	G	2	NAG	O5-C5	2.73	1.48	1.43
2	P	2	NAG	O5-C5	2.71	1.48	1.43
2	I	2	NAG	O5-C5	2.71	1.48	1.43
2	K	2	NAG	O5-C5	2.68	1.48	1.43
2	F	2	NAG	O5-C5	2.65	1.48	1.43
2	E	2	NAG	O5-C5	2.65	1.48	1.43
2	L	2	NAG	O5-C5	2.60	1.48	1.43
2	O	1	NAG	O5-C5	2.56	1.48	1.43
2	G	1	NAG	O5-C5	2.51	1.48	1.43
2	P	1	NAG	O5-C5	2.44	1.48	1.43
2	H	1	NAG	O5-C5	2.40	1.48	1.43
2	N	1	NAG	O5-C5	2.40	1.48	1.43
2	L	1	NAG	O5-C5	2.37	1.48	1.43
2	D	2	NAG	C1-C2	2.24	1.55	1.52
2	E	1	NAG	O5-C5	2.24	1.47	1.43
2	Q	1	NAG	O5-C5	2.21	1.47	1.43
2	J	1	NAG	O5-C5	2.18	1.47	1.43
2	I	1	NAG	O5-C5	2.16	1.47	1.43
2	K	1	NAG	O5-C5	2.14	1.47	1.43
2	D	1	NAG	O4-C4	2.14	1.48	1.43
2	D	2	NAG	O5-C1	2.12	1.47	1.43
2	F	1	NAG	O5-C5	2.12	1.47	1.43
2	I	2	NAG	O5-C1	2.10	1.47	1.43
2	H	2	NAG	O5-C1	2.06	1.47	1.43

All (17) bond angle outliers are listed below:

Mol	Chain	Res	Type	Atoms	Z	Observed(°)	Ideal(°)
2	I	2	NAG	C1-O5-C5	2.92	116.10	112.19
2	N	2	NAG	C1-O5-C5	2.51	115.55	112.19
2	M	1	NAG	C1-O5-C5	2.51	115.54	112.19
2	Q	1	NAG	C1-O5-C5	2.43	115.44	112.19
2	E	2	NAG	C1-O5-C5	2.43	115.44	112.19

*Continued on next page...*

*Continued from previous page...*

Mol	Chain	Res	Type	Atoms	Z	Observed(°)	Ideal(°)
2	M	2	NAG	O5-C1-C2	-2.33	107.68	111.29
2	D	1	NAG	O4-C4-C3	-2.18	105.24	110.38
2	G	1	NAG	C3-C4-C5	2.16	114.15	110.23
2	G	1	NAG	C1-O5-C5	2.16	115.08	112.19
2	D	1	NAG	C1-O5-C5	2.13	115.04	112.19
2	P	2	NAG	C1-O5-C5	2.10	115.01	112.19
2	H	1	NAG	C1-O5-C5	2.10	115.00	112.19
2	I	1	NAG	C3-C4-C5	2.08	114.00	110.23
2	I	1	NAG	O4-C4-C5	-2.07	104.22	109.32
2	K	2	NAG	C1-O5-C5	2.04	114.92	112.19
2	H	2	NAG	C1-O5-C5	2.03	114.91	112.19
2	E	2	NAG	O5-C1-C2	-2.02	108.17	111.29

There are no chirality outliers.

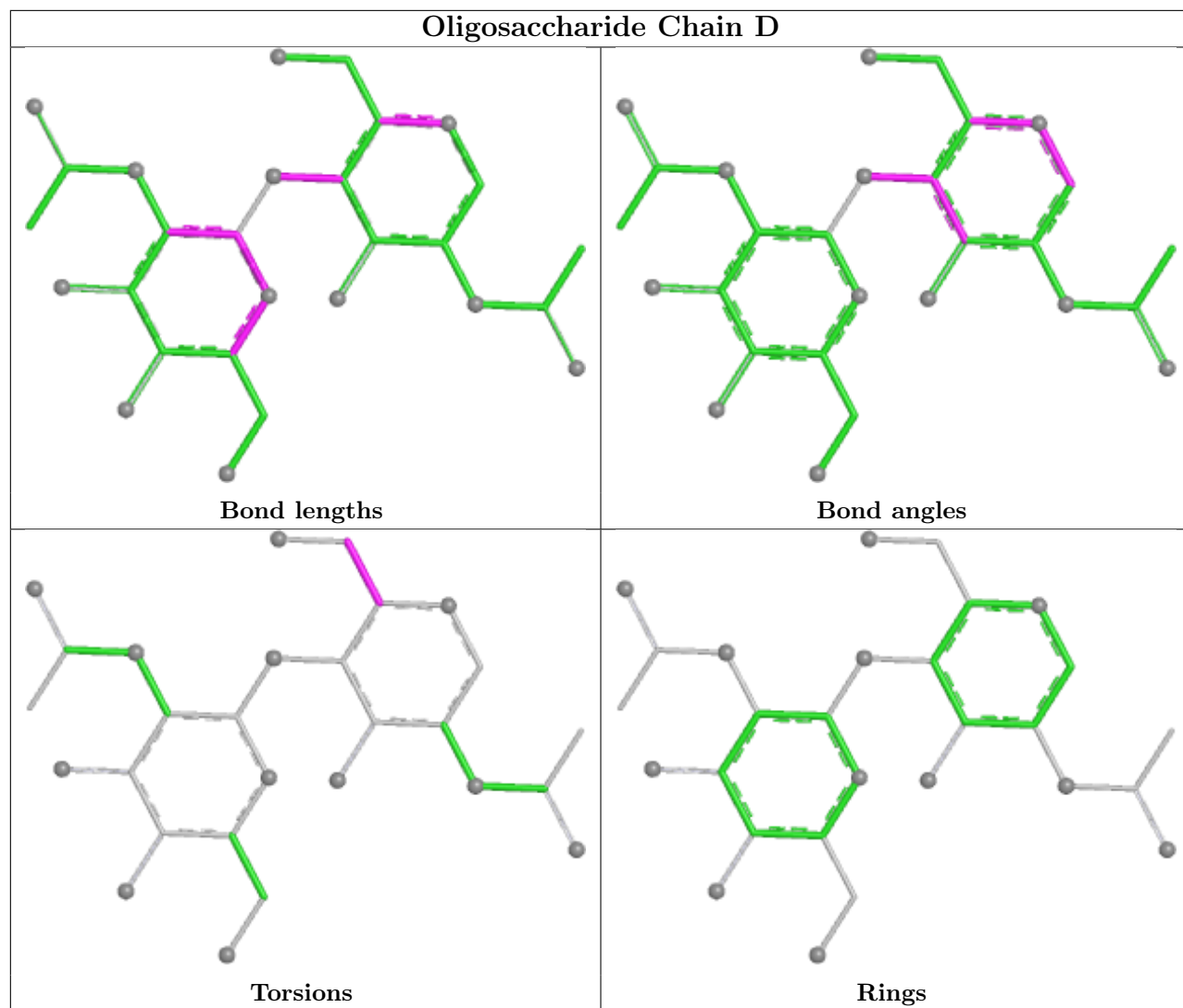
All (3) torsion outliers are listed below:

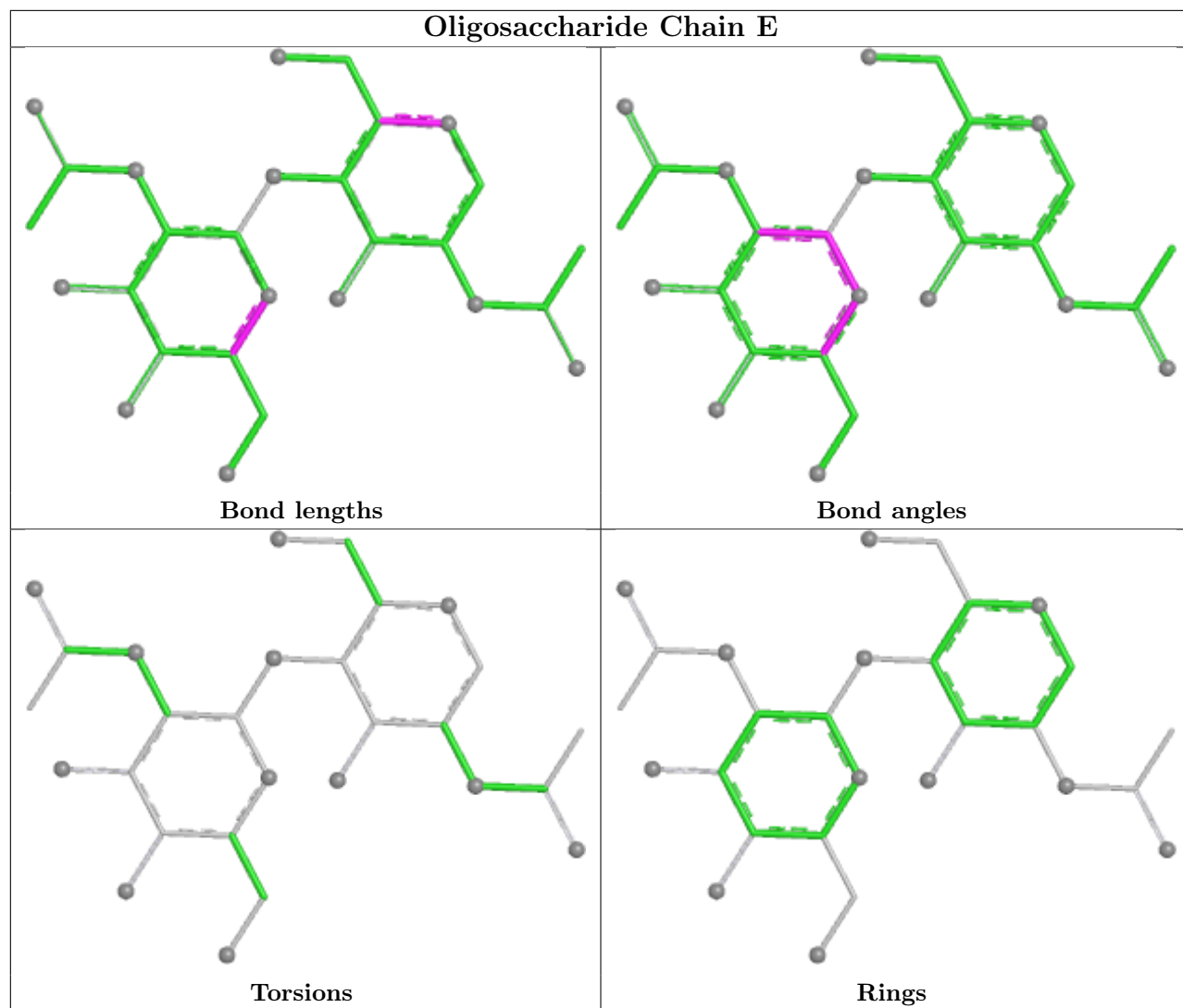
Mol	Chain	Res	Type	Atoms
2	D	1	NAG	O5-C5-C6-O6
2	I	1	NAG	C1-C2-N2-C7
2	D	1	NAG	C4-C5-C6-O6

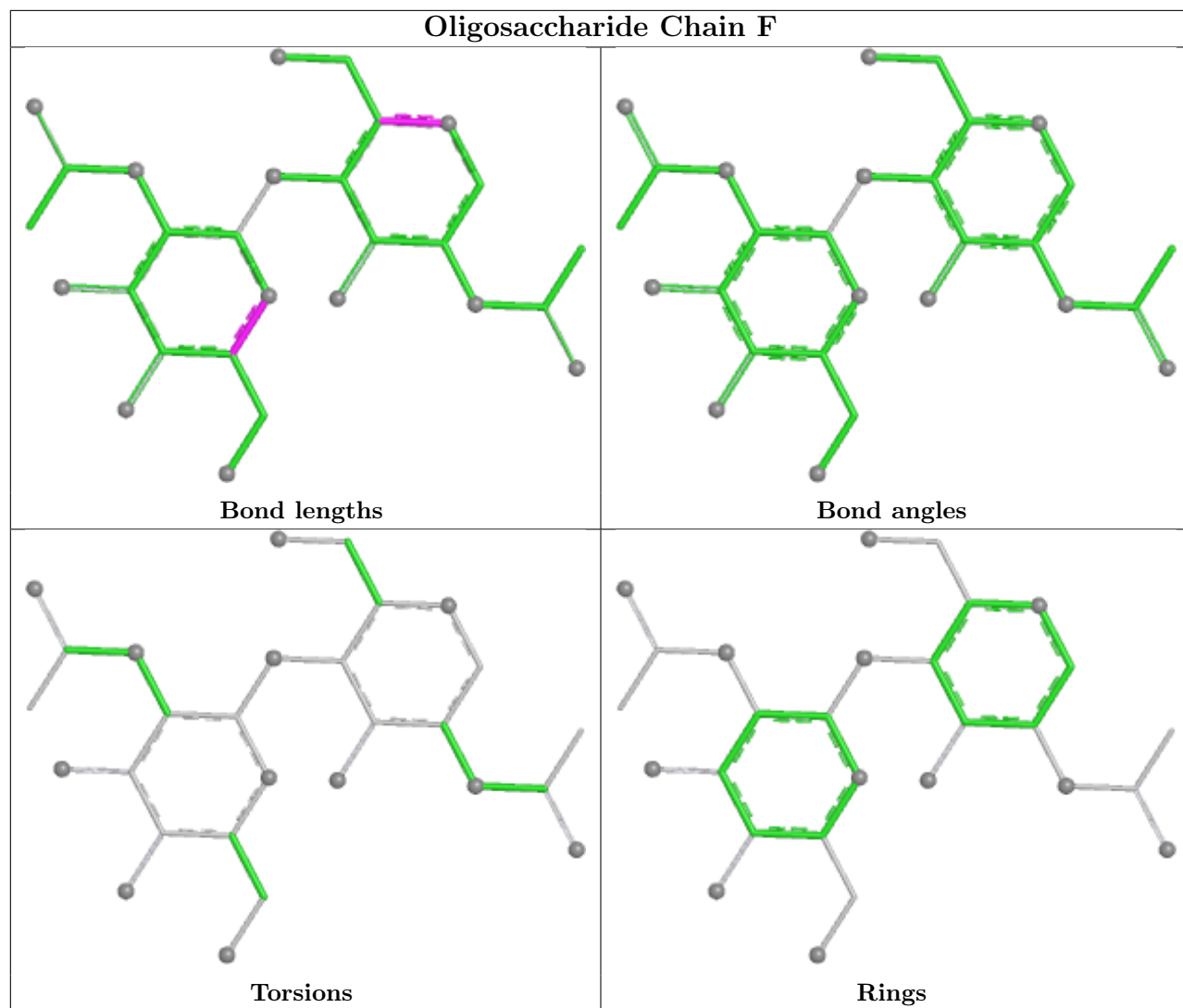
There are no ring outliers.

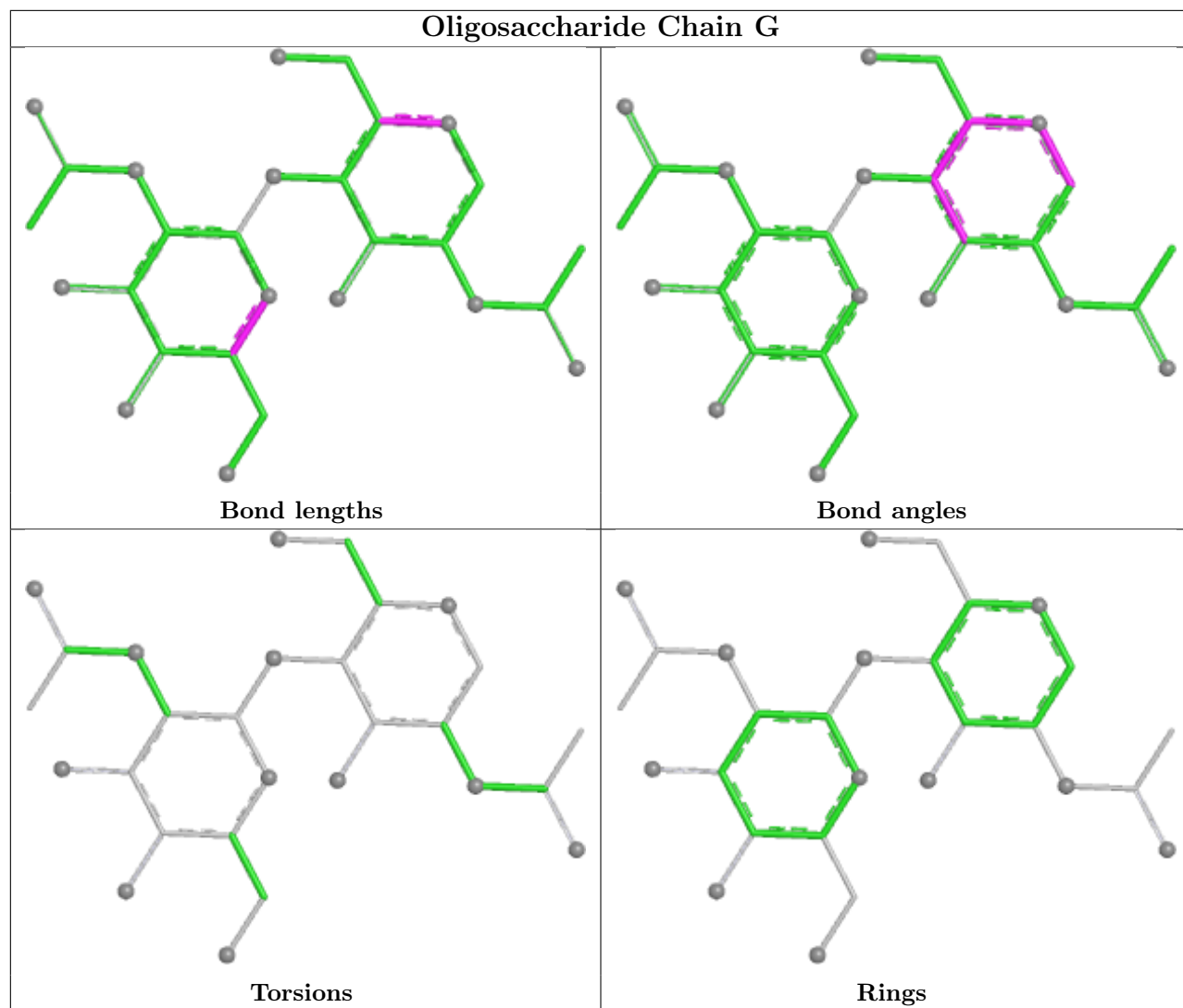
No monomer is involved in short contacts.

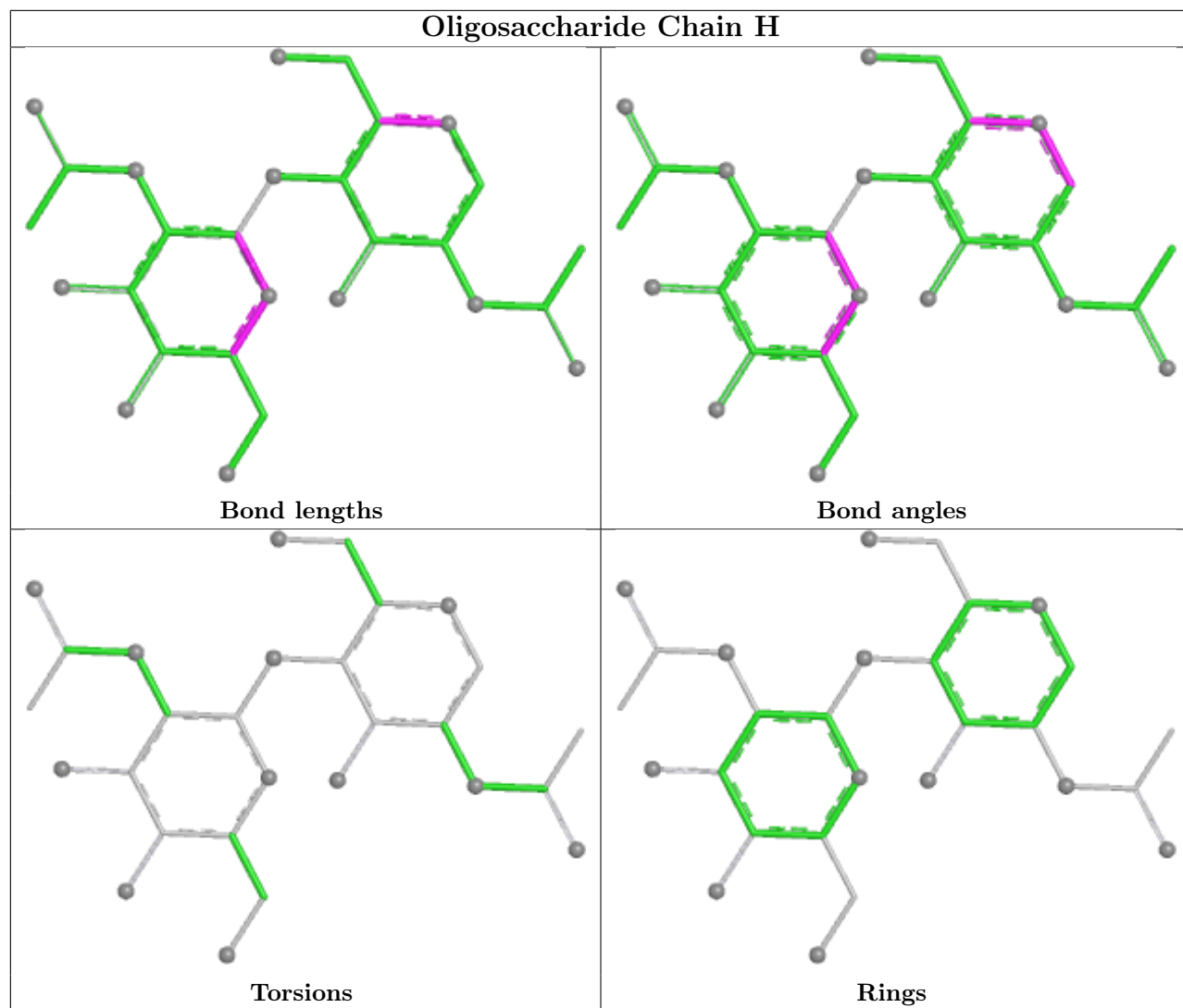
The following is a two-dimensional graphical depiction of Mogul quality analysis of bond lengths, bond angles, torsion angles, and ring geometry for oligosaccharide.

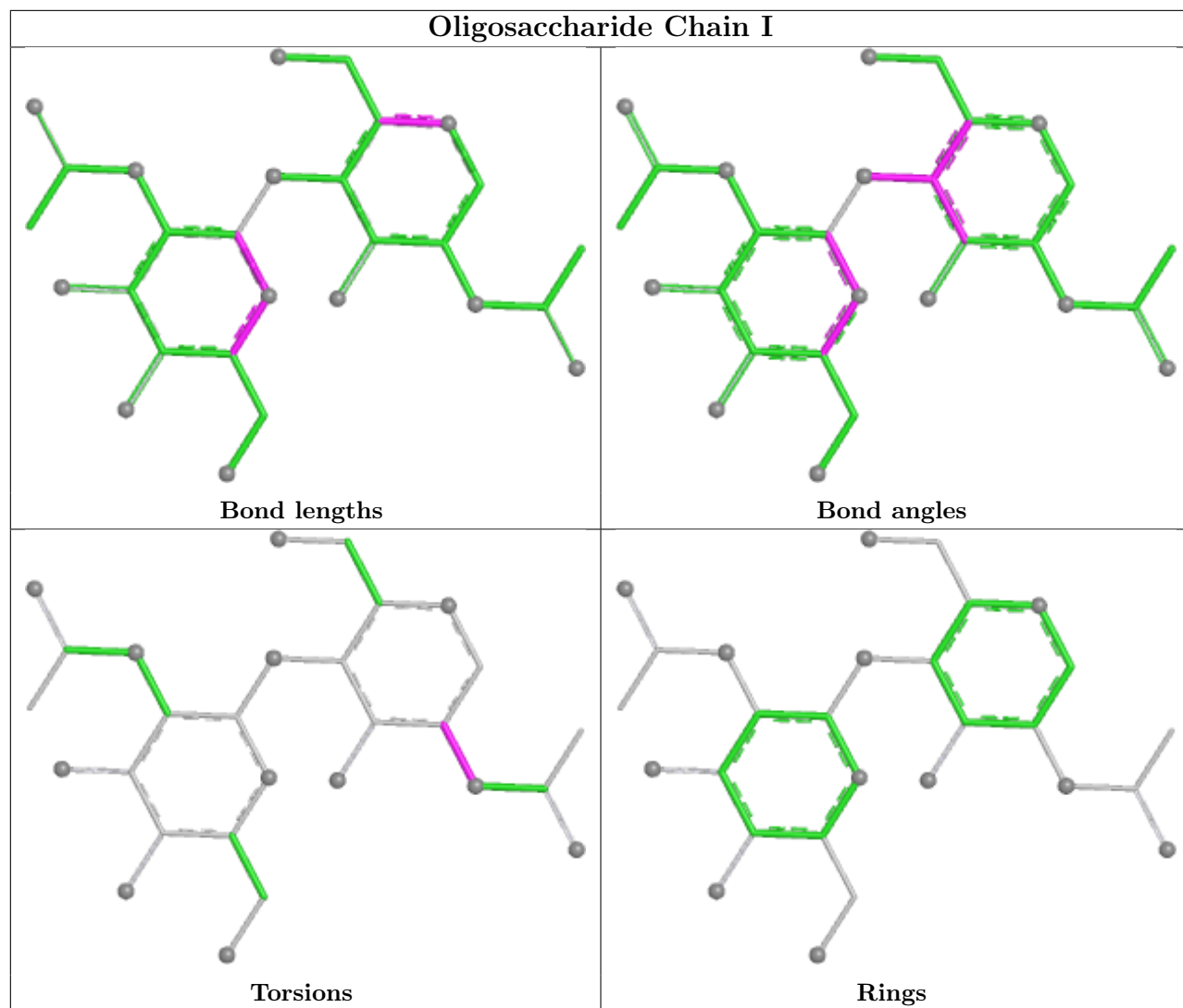


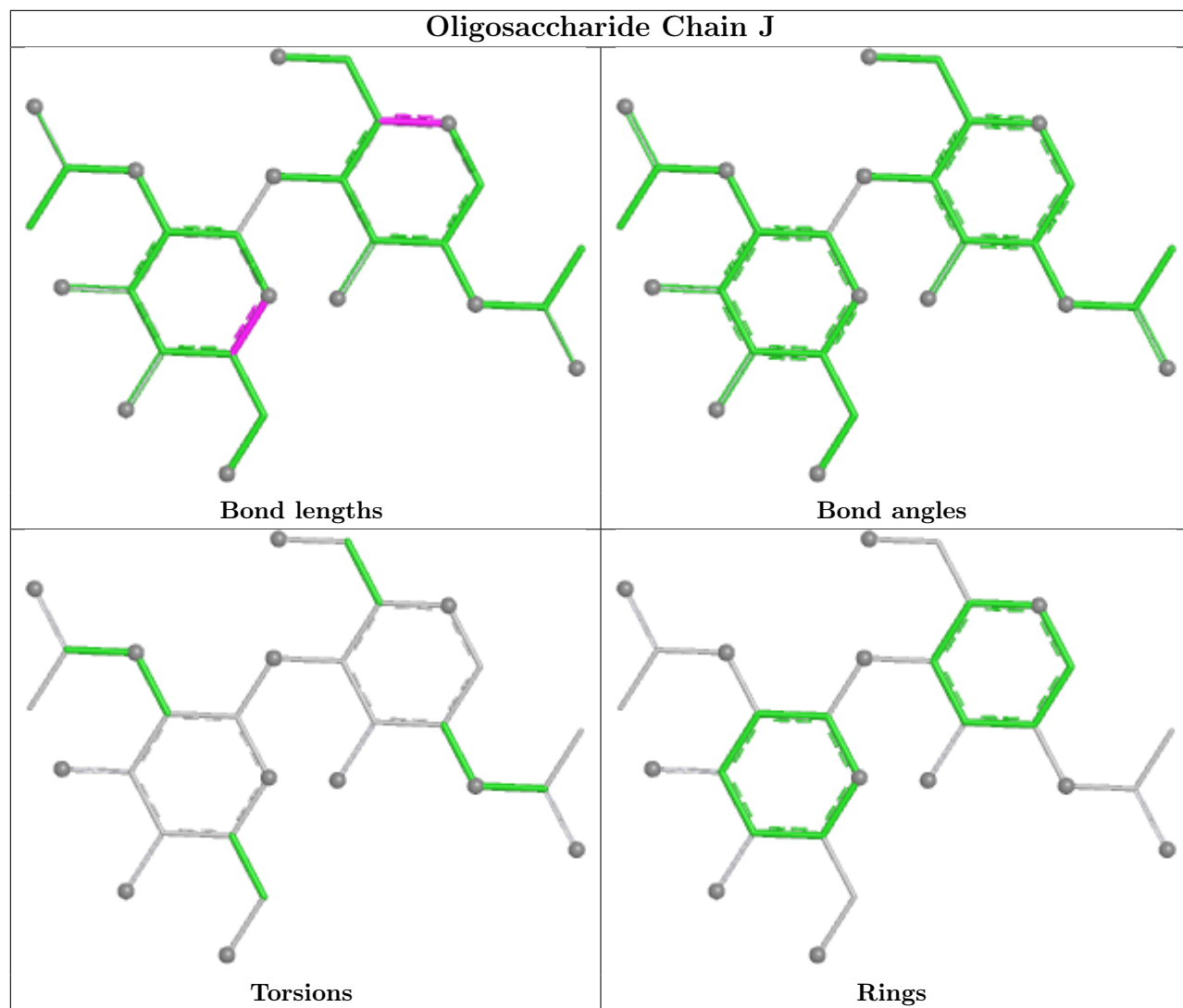


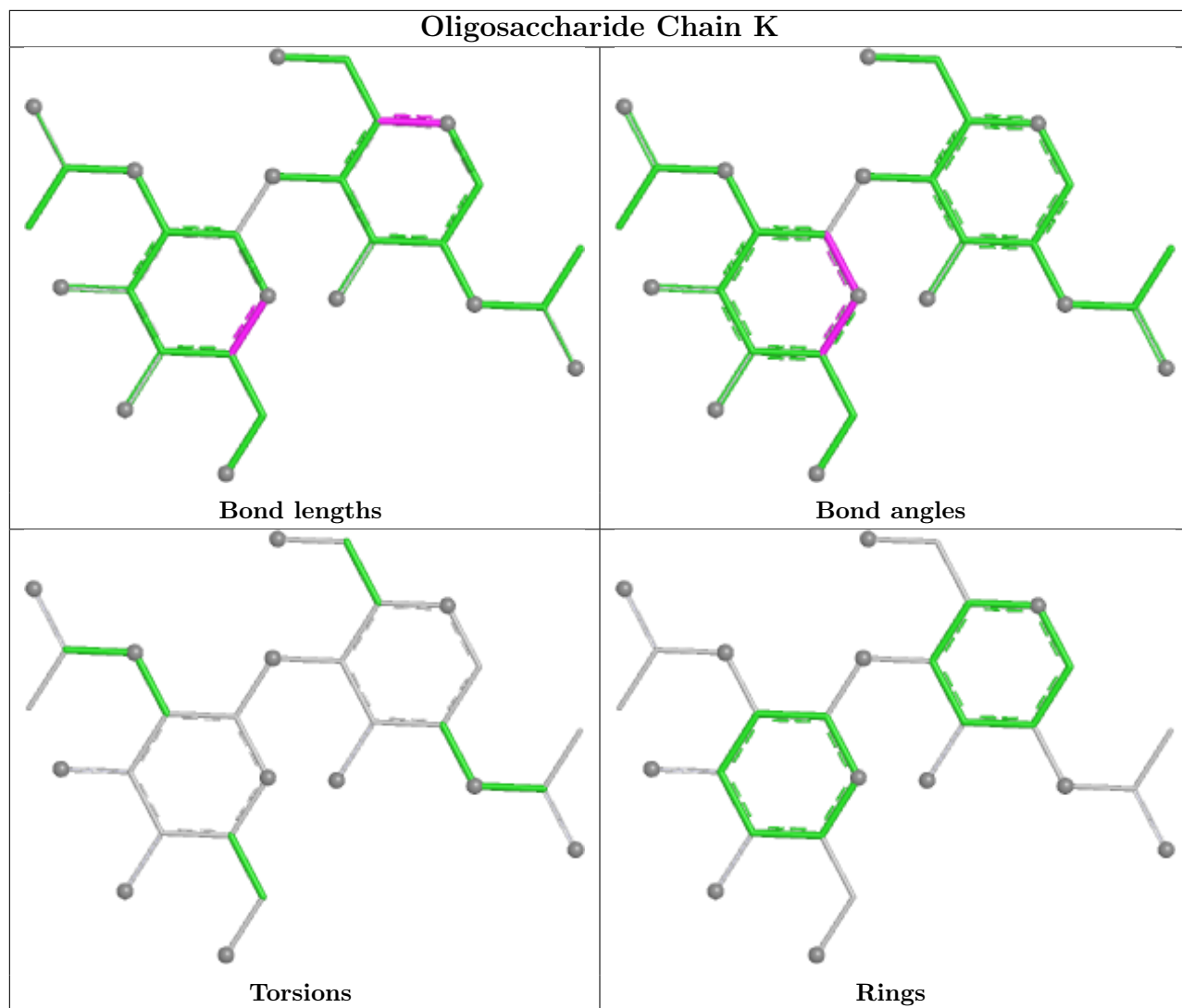


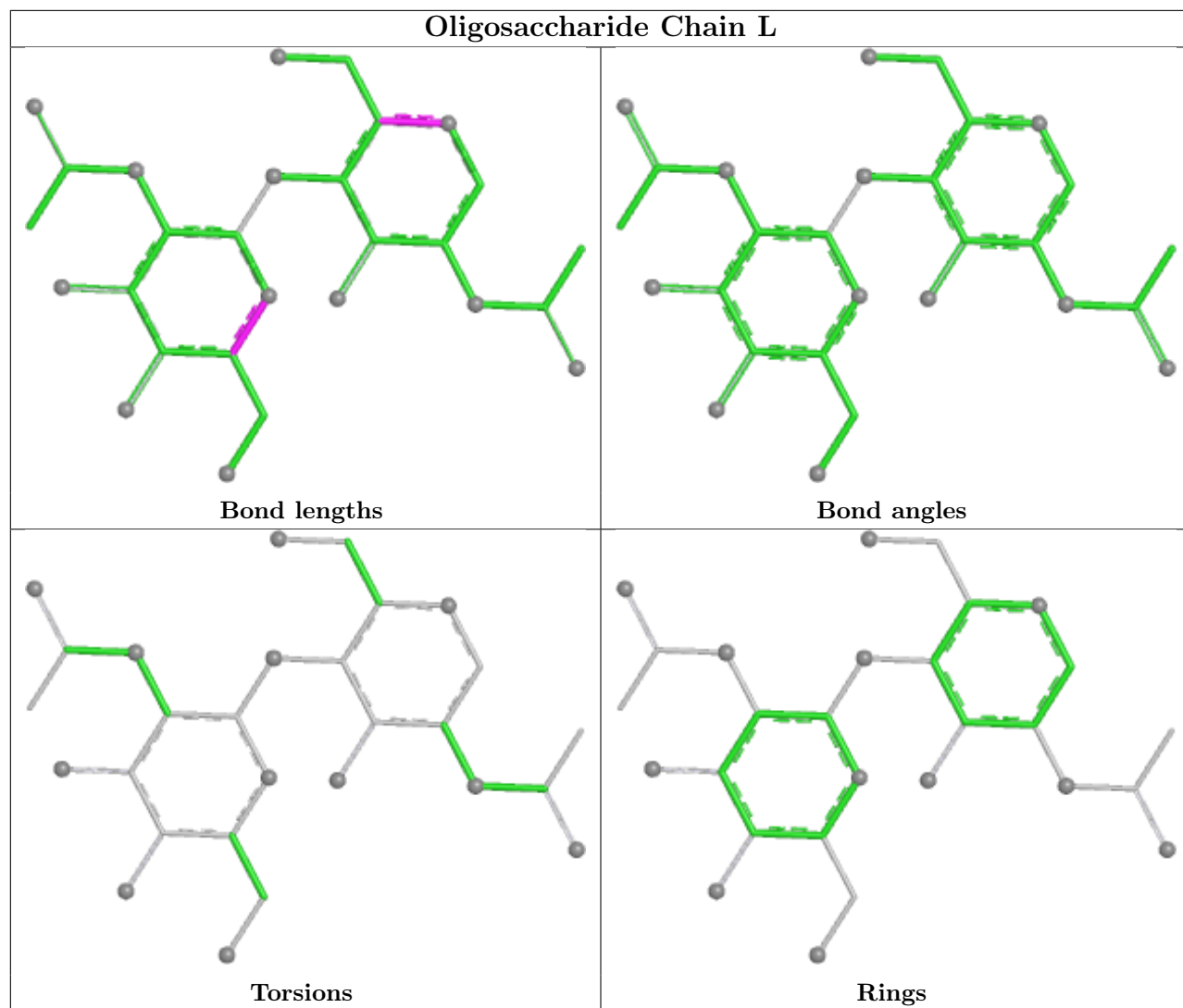


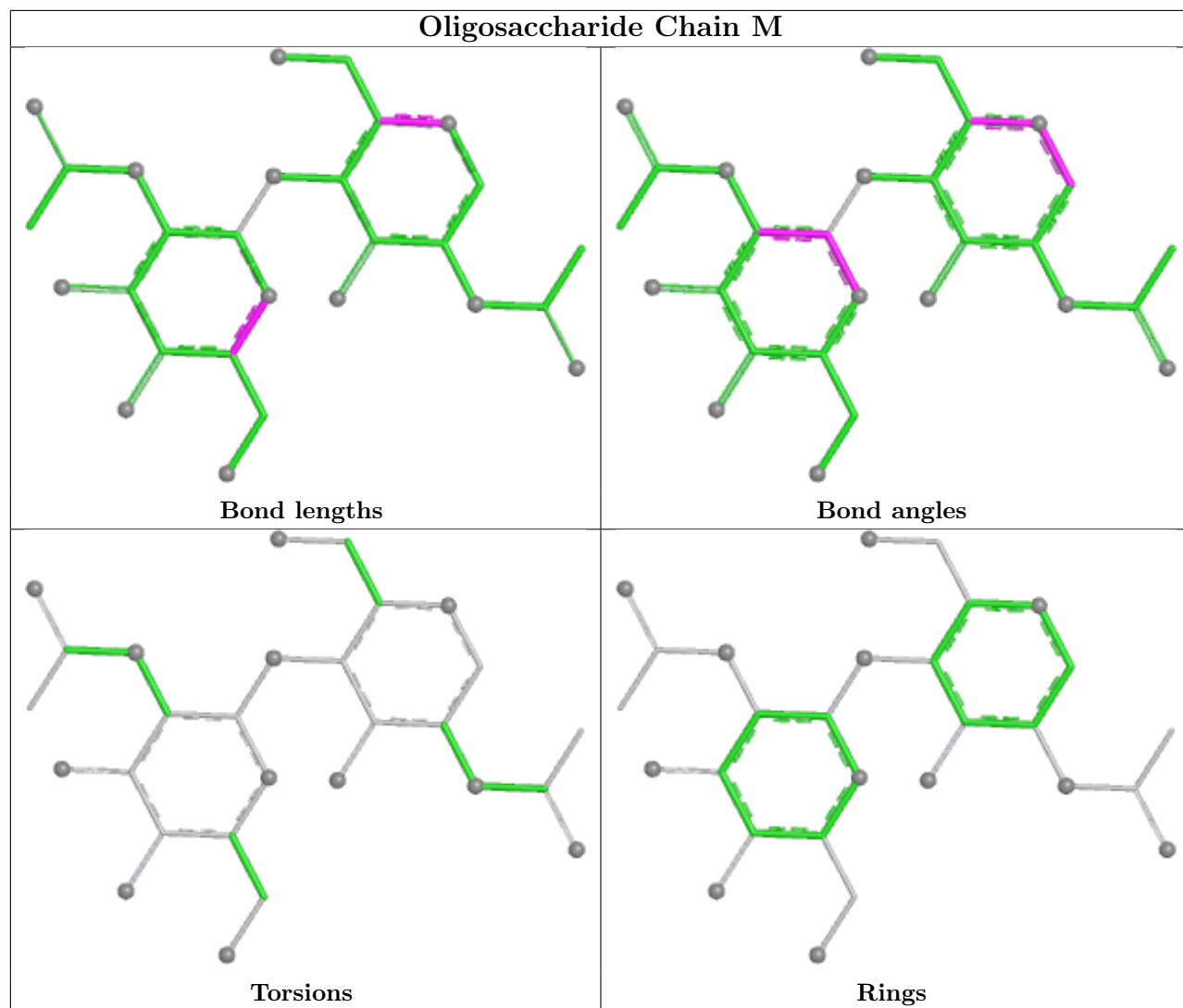


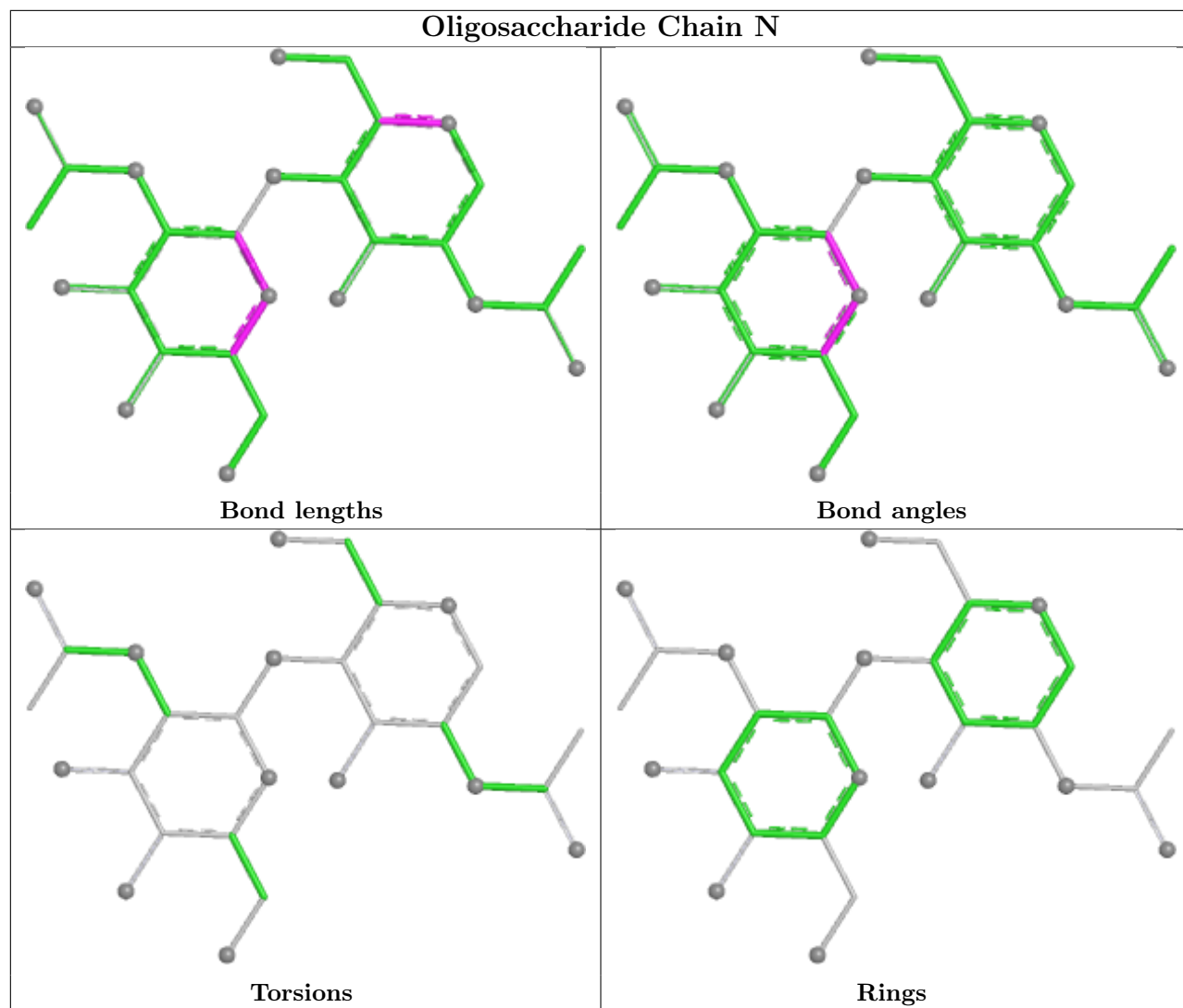


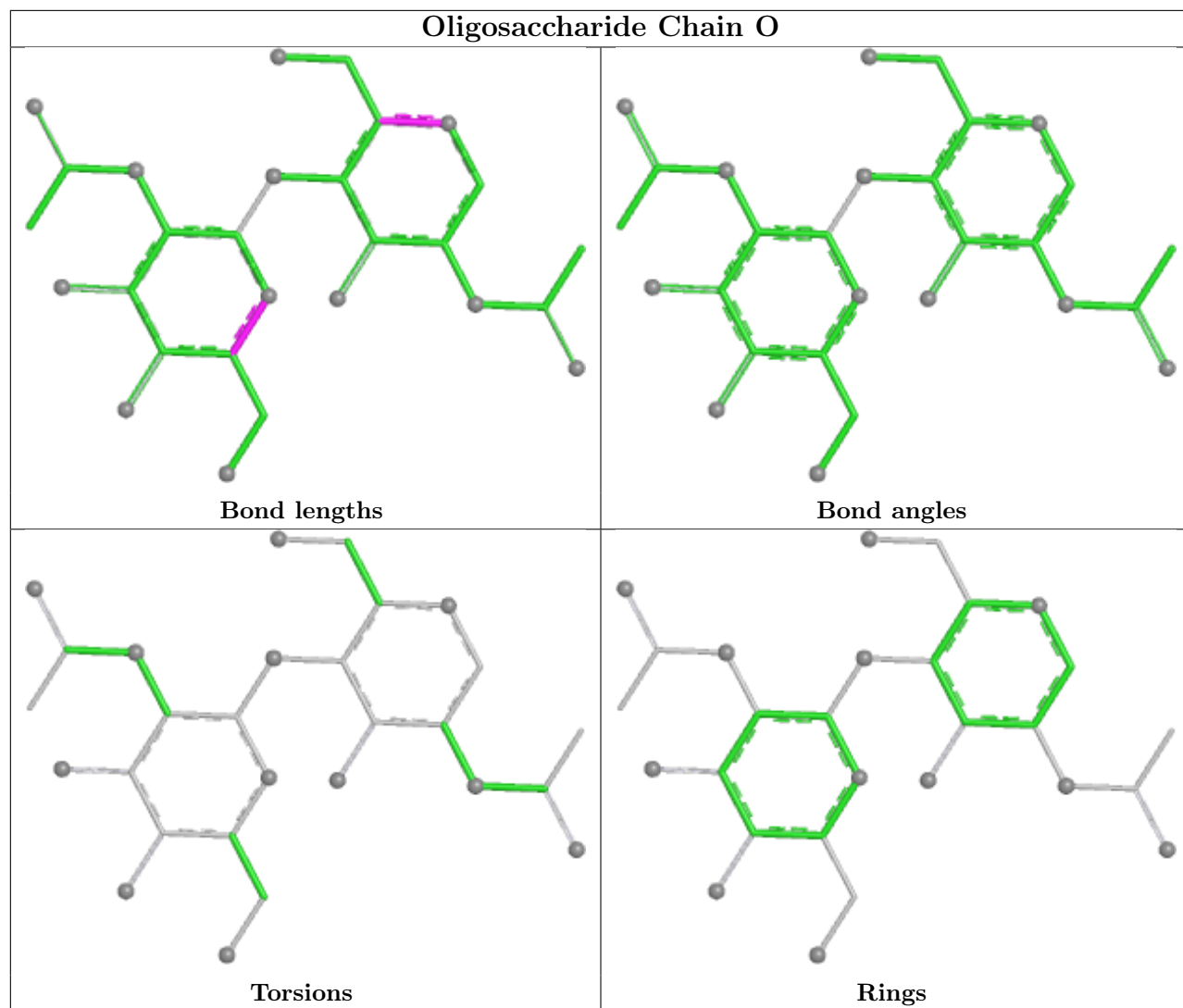


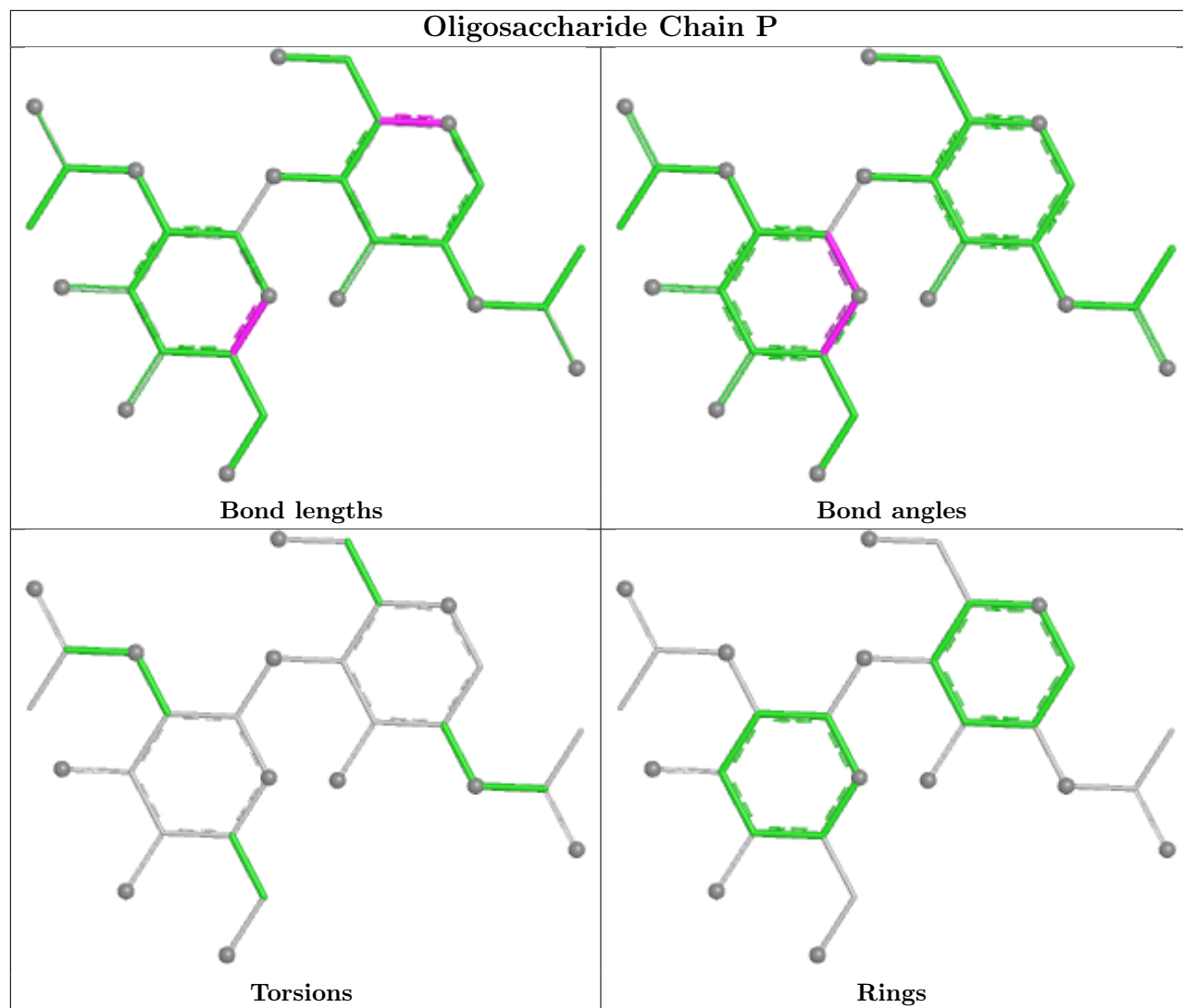


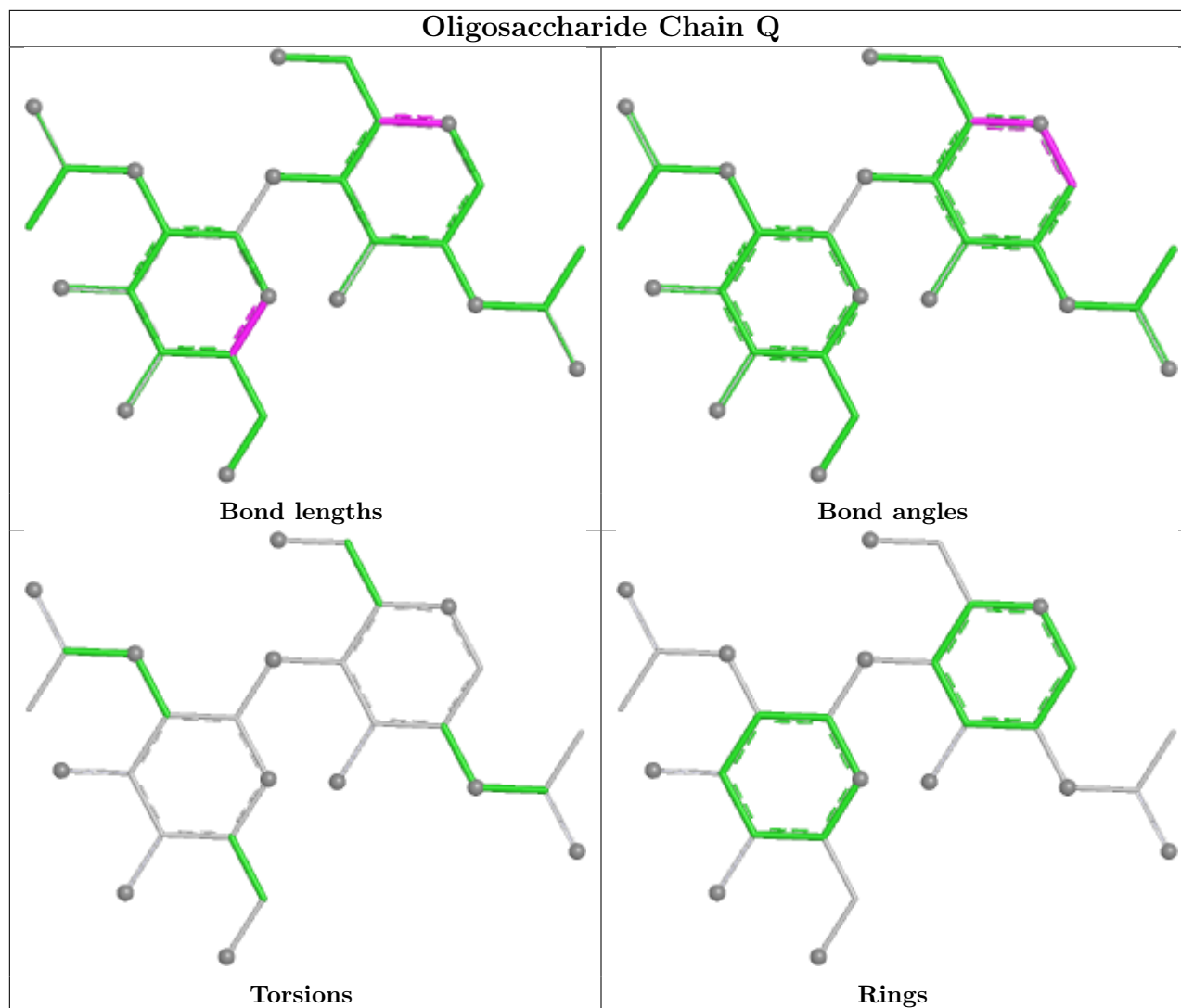












## 5.6 Ligand geometry [i](#)

33 ligands are modelled in this entry.

In the following table, the Counts columns list the number of bonds (or angles) for which Mogul statistics could be retrieved, the number of bonds (or angles) that are observed in the model and the number of bonds (or angles) that are defined in the Chemical Component Dictionary. The Link column lists molecule types, if any, to which the group is linked. The Z score for a bond length (or angle) is the number of standard deviations the observed value is removed from the expected value. A bond length (or angle) with  $|Z| > 2$  is considered an outlier worth inspection. RMSZ is the root-mean-square of all Z scores of the bond lengths (or angles).

Mol	Type	Chain	Res	Link	Bond lengths			Bond angles		
					Counts	RMSZ	$\# Z  > 2$	Counts	RMSZ	$\# Z  > 2$
3	NAG	B	1308	1	14,14,15	1.28	2 (14%)	17,19,21	0.73	0
3	NAG	A	1310	1	14,14,15	1.22	2 (14%)	17,19,21	0.78	1 (5%)
3	NAG	A	1311	1	14,14,15	1.10	1 (7%)	17,19,21	0.71	0

Mol	Type	Chain	Res	Link	Bond lengths			Bond angles		
					Counts	RMSZ	# Z  > 2	Counts	RMSZ	# Z  > 2
3	NAG	B	1311	1	14,14,15	1.14	1 (7%)	17,19,21	0.96	1 (5%)
3	NAG	C	1311	1	14,14,15	1.20	1 (7%)	17,19,21	0.89	1 (5%)
3	NAG	B	1305	1	14,14,15	1.26	2 (14%)	17,19,21	0.64	0
3	NAG	A	1307	1	14,14,15	1.26	1 (7%)	17,19,21	0.87	0
3	NAG	C	1303	1	14,14,15	1.23	2 (14%)	17,19,21	0.74	0
3	NAG	C	1307	1	14,14,15	1.24	2 (14%)	17,19,21	0.85	1 (5%)
3	NAG	A	1306	1	14,14,15	1.10	1 (7%)	17,19,21	0.84	1 (5%)
3	NAG	C	1306	1	14,14,15	1.33	3 (21%)	17,19,21	0.78	1 (5%)
3	NAG	A	1304	1	14,14,15	1.28	3 (21%)	17,19,21	0.63	0
3	NAG	C	1302	1	14,14,15	1.18	1 (7%)	17,19,21	0.71	0
3	NAG	B	1302	1	14,14,15	1.27	2 (14%)	17,19,21	0.85	1 (5%)
3	NAG	B	1304	1	14,14,15	1.22	2 (14%)	17,19,21	0.93	1 (5%)
3	NAG	A	1309	1	14,14,15	1.15	1 (7%)	17,19,21	0.67	0
3	NAG	B	1309	1	14,14,15	1.16	1 (7%)	17,19,21	0.87	1 (5%)
3	NAG	B	1307	1	14,14,15	1.23	1 (7%)	17,19,21	0.70	0
3	NAG	C	1309	1	14,14,15	1.22	2 (14%)	17,19,21	0.61	0
3	NAG	B	1306	1	14,14,15	1.34	2 (14%)	17,19,21	0.94	1 (5%)
3	NAG	A	1303	1	14,14,15	1.24	2 (14%)	17,19,21	0.75	1 (5%)
3	NAG	A	1308	1	14,14,15	1.24	1 (7%)	17,19,21	0.96	1 (5%)
3	NAG	B	1301	1	14,14,15	1.29	3 (21%)	17,19,21	0.60	0
3	NAG	A	1302	1	14,14,15	1.30	2 (14%)	17,19,21	0.75	0
3	NAG	A	1305	1	14,14,15	1.32	2 (14%)	17,19,21	0.79	1 (5%)
3	NAG	A	1301	1	14,14,15	1.22	2 (14%)	17,19,21	1.08	1 (5%)
3	NAG	B	1310	1	14,14,15	1.19	1 (7%)	17,19,21	0.74	0
3	NAG	C	1305	1	14,14,15	1.24	1 (7%)	17,19,21	0.82	0
3	NAG	C	1301	1	14,14,15	1.31	3 (21%)	17,19,21	0.94	1 (5%)
3	NAG	B	1303	1	14,14,15	1.24	2 (14%)	17,19,21	0.68	0
3	NAG	C	1308	1	14,14,15	1.15	1 (7%)	17,19,21	1.10	1 (5%)
3	NAG	C	1310	1	14,14,15	1.22	1 (7%)	17,19,21	0.64	0
3	NAG	C	1304	1	14,14,15	1.24	2 (14%)	17,19,21	0.63	0

In the following table, the Chirals column lists the number of chiral outliers, the number of chiral centers analysed, the number of these observed in the model and the number defined in the Chemical Component Dictionary. Similar counts are reported in the Torsion and Rings columns. '-' means no outliers of that kind were identified.

Mol	Type	Chain	Res	Link	Chirals	Torsions	Rings
3	NAG	B	1308	1	-	0/6/23/26	0/1/1/1
3	NAG	A	1310	1	-	1/6/23/26	0/1/1/1
3	NAG	A	1311	1	-	0/6/23/26	0/1/1/1
3	NAG	B	1311	1	-	1/6/23/26	0/1/1/1
3	NAG	C	1311	1	-	0/6/23/26	0/1/1/1
3	NAG	B	1305	1	-	0/6/23/26	0/1/1/1
3	NAG	A	1307	1	-	0/6/23/26	0/1/1/1
3	NAG	C	1303	1	-	0/6/23/26	0/1/1/1
3	NAG	C	1307	1	-	0/6/23/26	0/1/1/1
3	NAG	A	1306	1	-	0/6/23/26	0/1/1/1
3	NAG	C	1306	1	-	0/6/23/26	0/1/1/1
3	NAG	A	1304	1	-	0/6/23/26	0/1/1/1
3	NAG	C	1302	1	-	0/6/23/26	0/1/1/1
3	NAG	B	1302	1	-	0/6/23/26	0/1/1/1
3	NAG	B	1304	1	-	0/6/23/26	0/1/1/1
3	NAG	A	1309	1	-	1/6/23/26	0/1/1/1
3	NAG	B	1309	1	-	0/6/23/26	0/1/1/1
3	NAG	B	1307	1	-	0/6/23/26	0/1/1/1
3	NAG	C	1309	1	-	1/6/23/26	0/1/1/1
3	NAG	B	1306	1	-	0/6/23/26	0/1/1/1
3	NAG	A	1303	1	-	1/6/23/26	0/1/1/1
3	NAG	A	1308	1	-	0/6/23/26	0/1/1/1
3	NAG	B	1301	1	-	0/6/23/26	0/1/1/1
3	NAG	A	1302	1	-	0/6/23/26	0/1/1/1
3	NAG	A	1305	1	-	0/6/23/26	0/1/1/1
3	NAG	A	1301	1	-	0/6/23/26	0/1/1/1
3	NAG	B	1310	1	-	0/6/23/26	0/1/1/1
3	NAG	C	1305	1	-	1/6/23/26	0/1/1/1
3	NAG	C	1301	1	-	1/6/23/26	0/1/1/1
3	NAG	B	1303	1	-	0/6/23/26	0/1/1/1
3	NAG	C	1308	1	-	1/6/23/26	0/1/1/1
3	NAG	C	1310	1	-	0/6/23/26	0/1/1/1
3	NAG	C	1304	1	-	0/6/23/26	0/1/1/1

All (56) bond length outliers are listed below:

Mol	Chain	Res	Type	Atoms	Z	Observed(Å)	Ideal(Å)
3	A	1302	NAG	O5-C5	2.98	1.49	1.43
3	A	1308	NAG	O5-C5	2.96	1.49	1.43
3	C	1306	NAG	O5-C5	2.92	1.49	1.43
3	A	1307	NAG	O5-C5	2.91	1.49	1.43
3	C	1310	NAG	O5-C5	2.90	1.49	1.43
3	B	1306	NAG	C1-C2	2.90	1.56	1.52

*Continued on next page...*

*Continued from previous page...*

Mol	Chain	Res	Type	Atoms	Z	Observed(Å)	Ideal(Å)
3	B	1310	NAG	O5-C5	2.89	1.49	1.43
3	C	1311	NAG	O5-C5	2.86	1.49	1.43
3	A	1305	NAG	O5-C5	2.83	1.48	1.43
3	C	1302	NAG	O5-C5	2.76	1.48	1.43
3	B	1305	NAG	O5-C5	2.75	1.48	1.43
3	C	1309	NAG	O5-C5	2.74	1.48	1.43
3	B	1302	NAG	O5-C5	2.73	1.48	1.43
3	C	1305	NAG	O5-C5	2.72	1.48	1.43
3	B	1307	NAG	O5-C5	2.71	1.48	1.43
3	B	1304	NAG	O5-C5	2.67	1.48	1.43
3	C	1301	NAG	O5-C5	2.66	1.48	1.43
3	C	1307	NAG	O5-C5	2.64	1.48	1.43
3	B	1308	NAG	O5-C5	2.62	1.48	1.43
3	C	1303	NAG	O5-C5	2.62	1.48	1.43
3	A	1304	NAG	O5-C5	2.61	1.48	1.43
3	B	1306	NAG	O5-C5	2.61	1.48	1.43
3	B	1301	NAG	O5-C5	2.59	1.48	1.43
3	B	1309	NAG	O5-C5	2.59	1.48	1.43
3	A	1303	NAG	O5-C5	2.58	1.48	1.43
3	A	1301	NAG	O5-C5	2.53	1.48	1.43
3	B	1303	NAG	O5-C5	2.53	1.48	1.43
3	C	1304	NAG	O5-C5	2.50	1.48	1.43
3	A	1309	NAG	O5-C5	2.48	1.48	1.43
3	C	1304	NAG	C1-C2	2.46	1.55	1.52
3	A	1310	NAG	O5-C5	2.44	1.48	1.43
3	C	1301	NAG	C1-C2	2.44	1.55	1.52
3	A	1311	NAG	O5-C5	2.43	1.48	1.43
3	C	1308	NAG	O5-C5	2.38	1.48	1.43
3	B	1311	NAG	O5-C5	2.33	1.48	1.43
3	A	1306	NAG	O5-C5	2.31	1.47	1.43
3	C	1306	NAG	C1-C2	2.27	1.55	1.52
3	B	1308	NAG	C1-C2	2.26	1.55	1.52
3	B	1303	NAG	C1-C2	2.24	1.55	1.52
3	A	1305	NAG	C1-C2	2.19	1.55	1.52
3	B	1301	NAG	C1-C2	2.19	1.55	1.52
3	A	1303	NAG	C1-C2	2.17	1.55	1.52
3	A	1304	NAG	O5-C1	2.17	1.47	1.43
3	B	1304	NAG	C1-C2	2.16	1.55	1.52
3	C	1307	NAG	C1-C2	2.14	1.55	1.52
3	B	1302	NAG	C1-C2	2.13	1.55	1.52
3	A	1304	NAG	C1-C2	2.13	1.55	1.52
3	A	1301	NAG	C1-C2	2.11	1.55	1.52

*Continued on next page...*

Continued from previous page...

Mol	Chain	Res	Type	Atoms	Z	Observed(Å)	Ideal(Å)
3	A	1310	NAG	C1-C2	2.10	1.55	1.52
3	C	1303	NAG	C1-C2	2.08	1.55	1.52
3	A	1302	NAG	C1-C2	2.08	1.55	1.52
3	B	1305	NAG	C1-C2	2.07	1.55	1.52
3	C	1306	NAG	O5-C1	2.06	1.47	1.43
3	C	1309	NAG	C1-C2	2.02	1.55	1.52
3	B	1301	NAG	O5-C1	2.01	1.47	1.43
3	C	1301	NAG	O5-C1	2.01	1.47	1.43

All (16) bond angle outliers are listed below:

Mol	Chain	Res	Type	Atoms	Z	Observed(°)	Ideal(°)
3	C	1301	NAG	C1-O5-C5	3.35	116.67	112.19
3	B	1304	NAG	C1-O5-C5	3.11	116.35	112.19
3	B	1311	NAG	C1-O5-C5	3.09	116.33	112.19
3	B	1306	NAG	C1-O5-C5	2.90	116.08	112.19
3	C	1308	NAG	C1-O5-C5	2.80	115.94	112.19
3	B	1309	NAG	C1-O5-C5	2.71	115.81	112.19
3	B	1302	NAG	C1-O5-C5	2.68	115.77	112.19
3	A	1305	NAG	C1-O5-C5	2.55	115.60	112.19
3	C	1307	NAG	C1-O5-C5	2.51	115.56	112.19
3	C	1306	NAG	C1-O5-C5	2.49	115.52	112.19
3	A	1301	NAG	C2-N2-C7	2.30	125.98	122.90
3	A	1308	NAG	O5-C1-C2	-2.12	108.02	111.29
3	C	1311	NAG	C1-O5-C5	2.11	115.01	112.19
3	A	1303	NAG	C1-O5-C5	2.09	114.99	112.19
3	A	1310	NAG	C1-O5-C5	2.06	114.95	112.19
3	A	1306	NAG	O5-C1-C2	-2.01	108.17	111.29

There are no chirality outliers.

All (8) torsion outliers are listed below:

Mol	Chain	Res	Type	Atoms
3	B	1311	NAG	O5-C5-C6-O6
3	C	1305	NAG	O5-C5-C6-O6
3	A	1310	NAG	O5-C5-C6-O6
3	C	1301	NAG	O5-C5-C6-O6
3	C	1309	NAG	C1-C2-N2-C7
3	C	1308	NAG	O5-C5-C6-O6
3	A	1309	NAG	O5-C5-C6-O6
3	A	1303	NAG	O5-C5-C6-O6

There are no ring outliers.

No monomer is involved in short contacts.

## 5.7 Other polymers

There are no such residues in this entry.

## 5.8 Polymer linkage issues

There are no chain breaks in this entry.

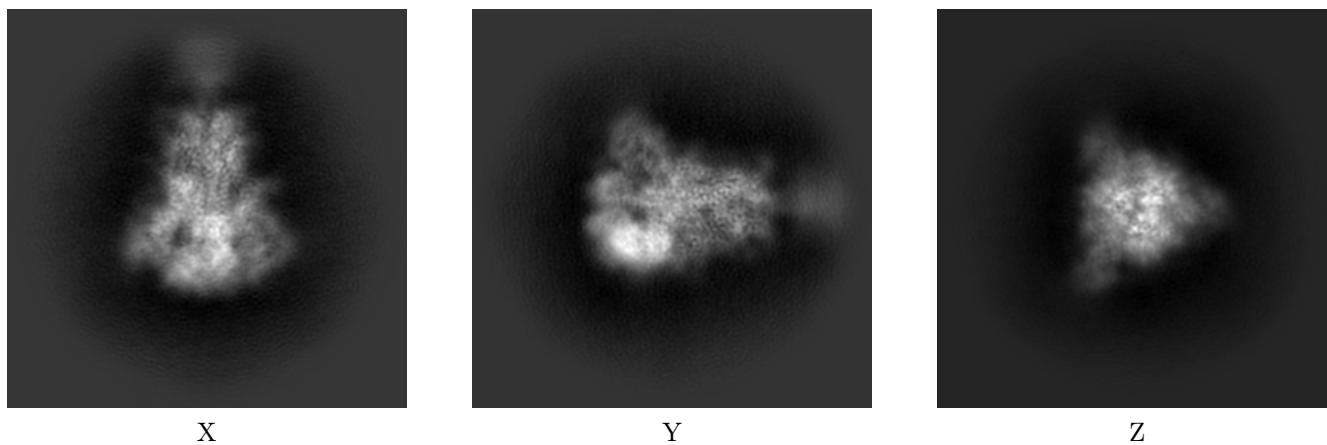
## 6 Map visualisation [i](#)

This section contains visualisations of the EMDB entry EMD-26046. These allow visual inspection of the internal detail of the map and identification of artifacts.

No raw map or half-maps were deposited for this entry and therefore no images, graphs, etc. pertaining to the raw map can be shown.

### 6.1 Orthogonal projections [i](#)

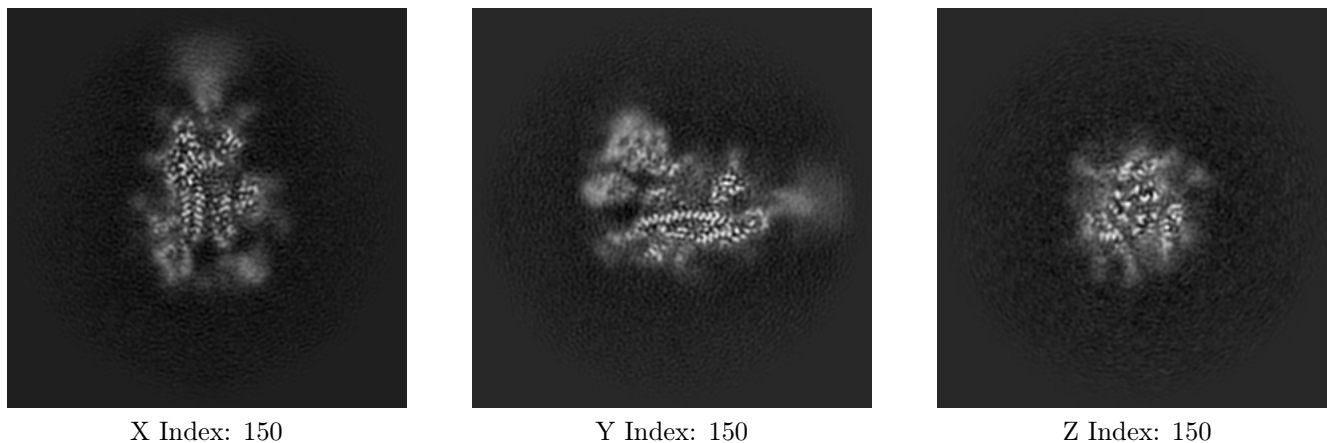
#### 6.1.1 Primary map



The images above show the map projected in three orthogonal directions.

### 6.2 Central slices [i](#)

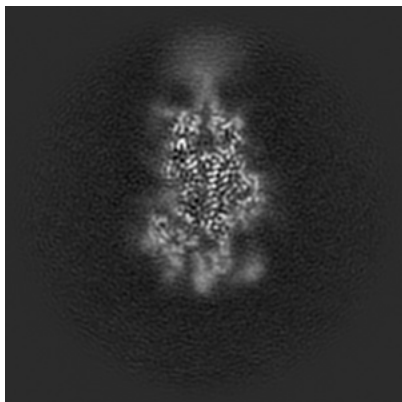
#### 6.2.1 Primary map



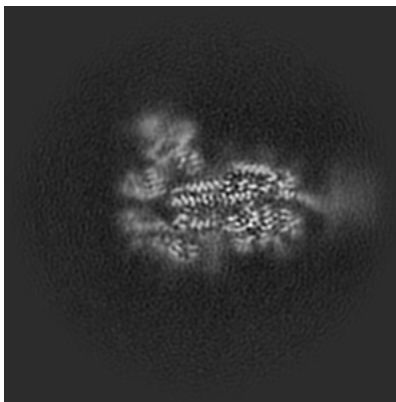
The images above show central slices of the map in three orthogonal directions.

## 6.3 Largest variance slices [i](#)

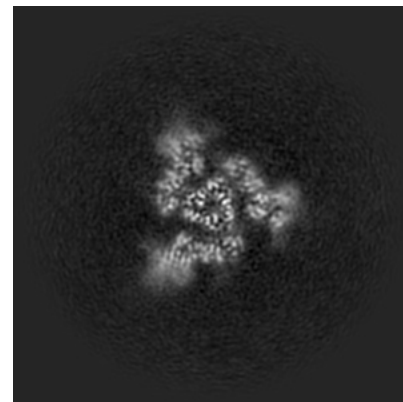
### 6.3.1 Primary map



X Index: 157



Y Index: 157

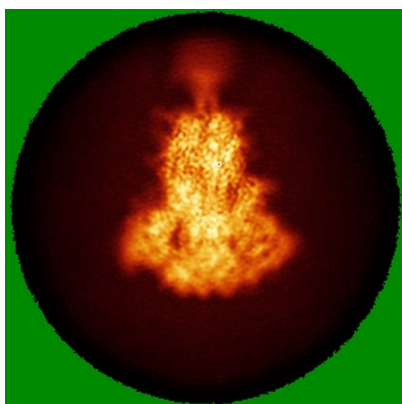


Z Index: 134

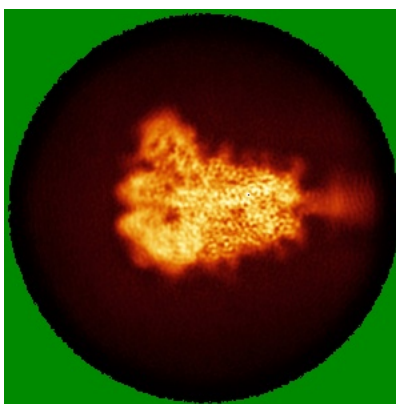
The images above show the largest variance slices of the map in three orthogonal directions.

## 6.4 Orthogonal standard-deviation projections (False-color) [i](#)

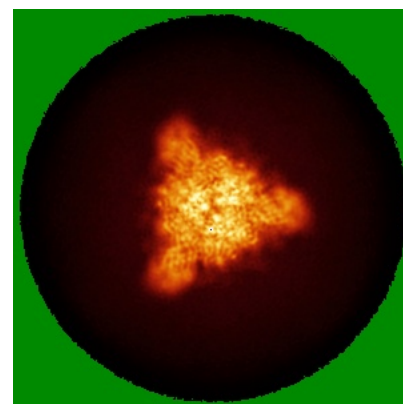
### 6.4.1 Primary map



X



Y



Z

The images above show the map standard deviation projections with false color in three orthogonal directions. Minimum values are shown in green, max in blue, and dark to light orange shades represent small to large values respectively.

## 6.5 Orthogonal surface views [i](#)

### 6.5.1 Primary map



The images above show the 3D surface view of the map at the recommended contour level 0.8. These images, in conjunction with the slice images, may facilitate assessment of whether an appropriate contour level has been provided.

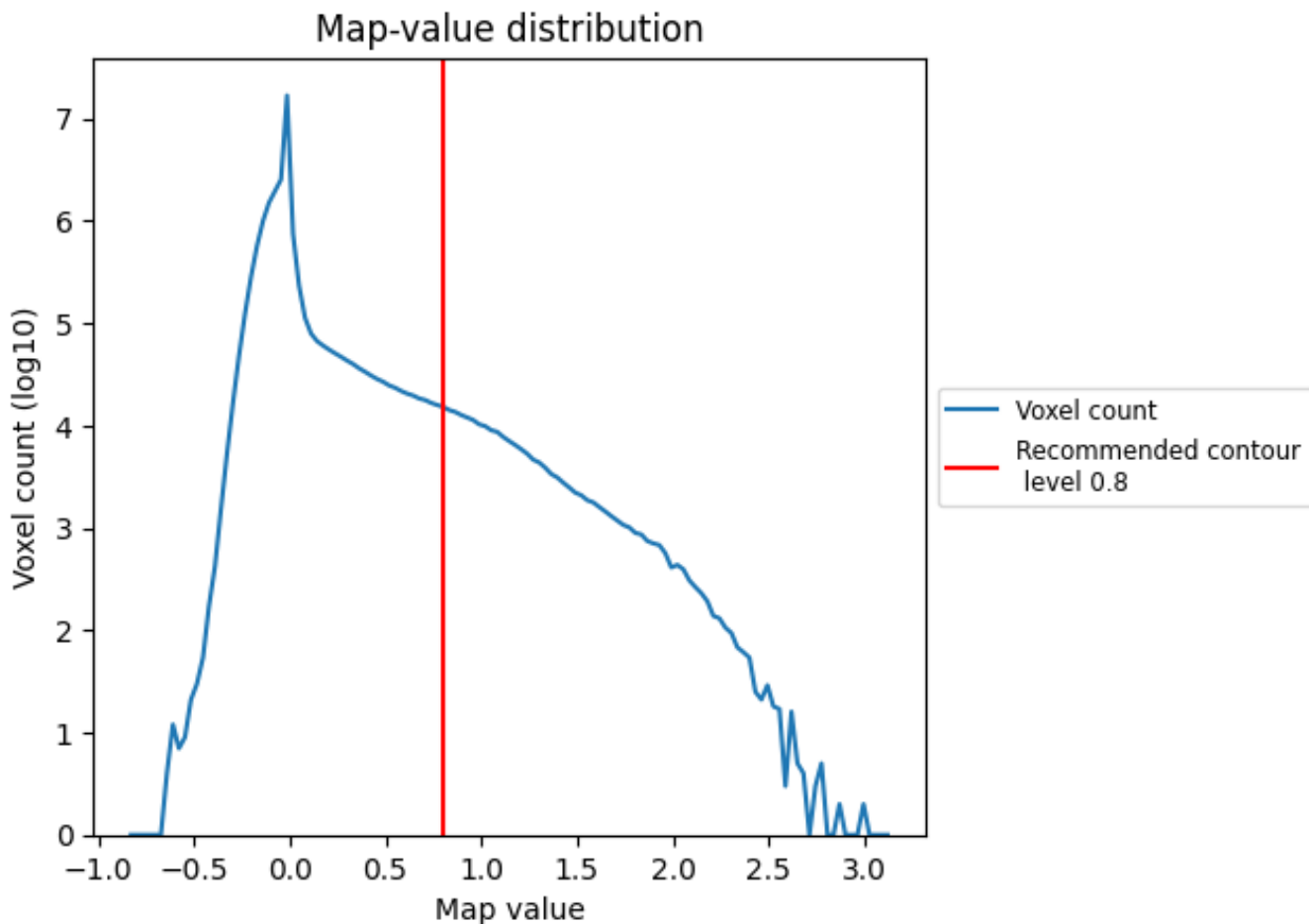
## 6.6 Mask visualisation [i](#)

This section was not generated. No masks/segmentation were deposited.

## 7 Map analysis [i](#)

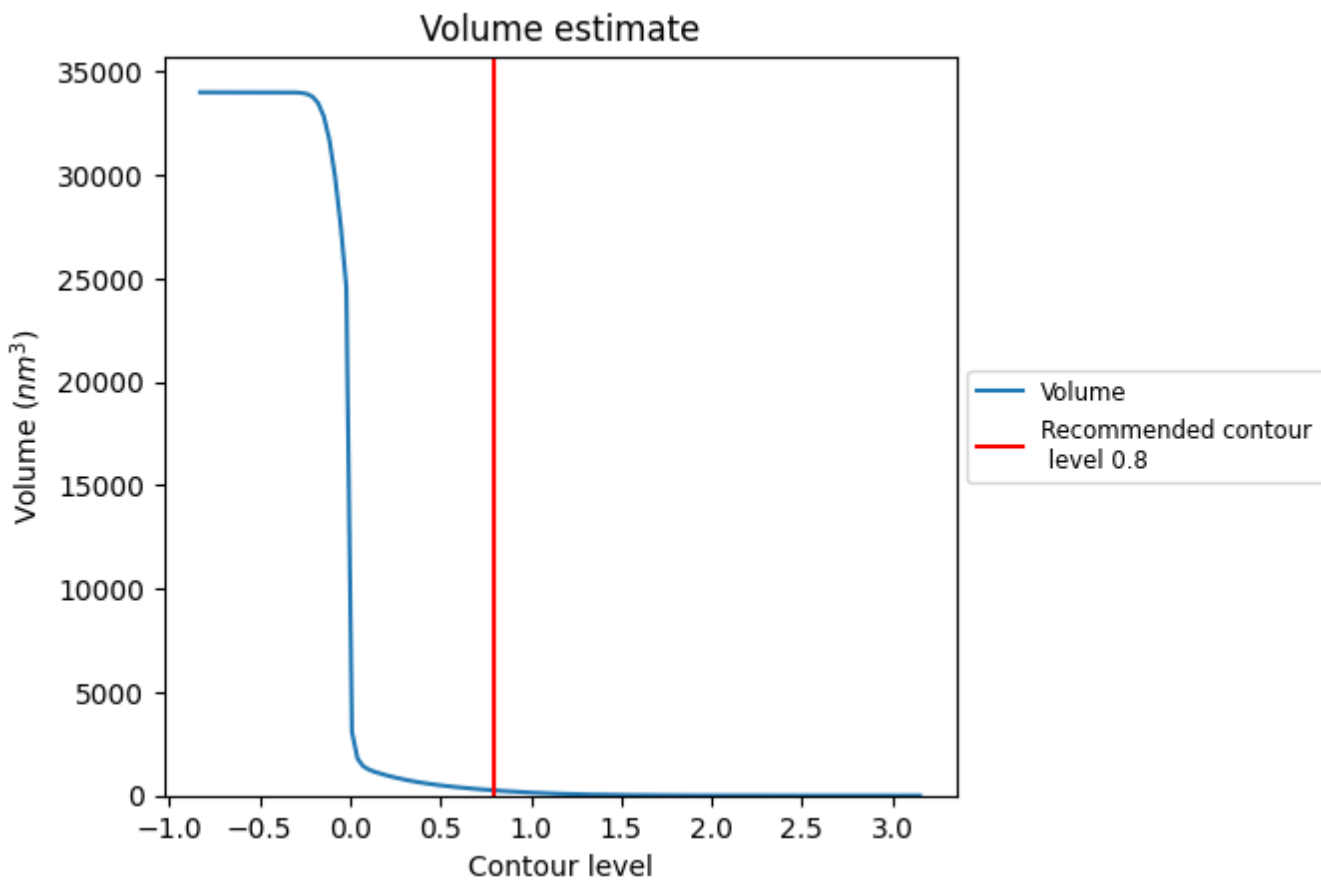
This section contains the results of statistical analysis of the map.

### 7.1 Map-value distribution [i](#)



The map-value distribution is plotted in 128 intervals along the x-axis. The y-axis is logarithmic. A spike in this graph at zero usually indicates that the volume has been masked.

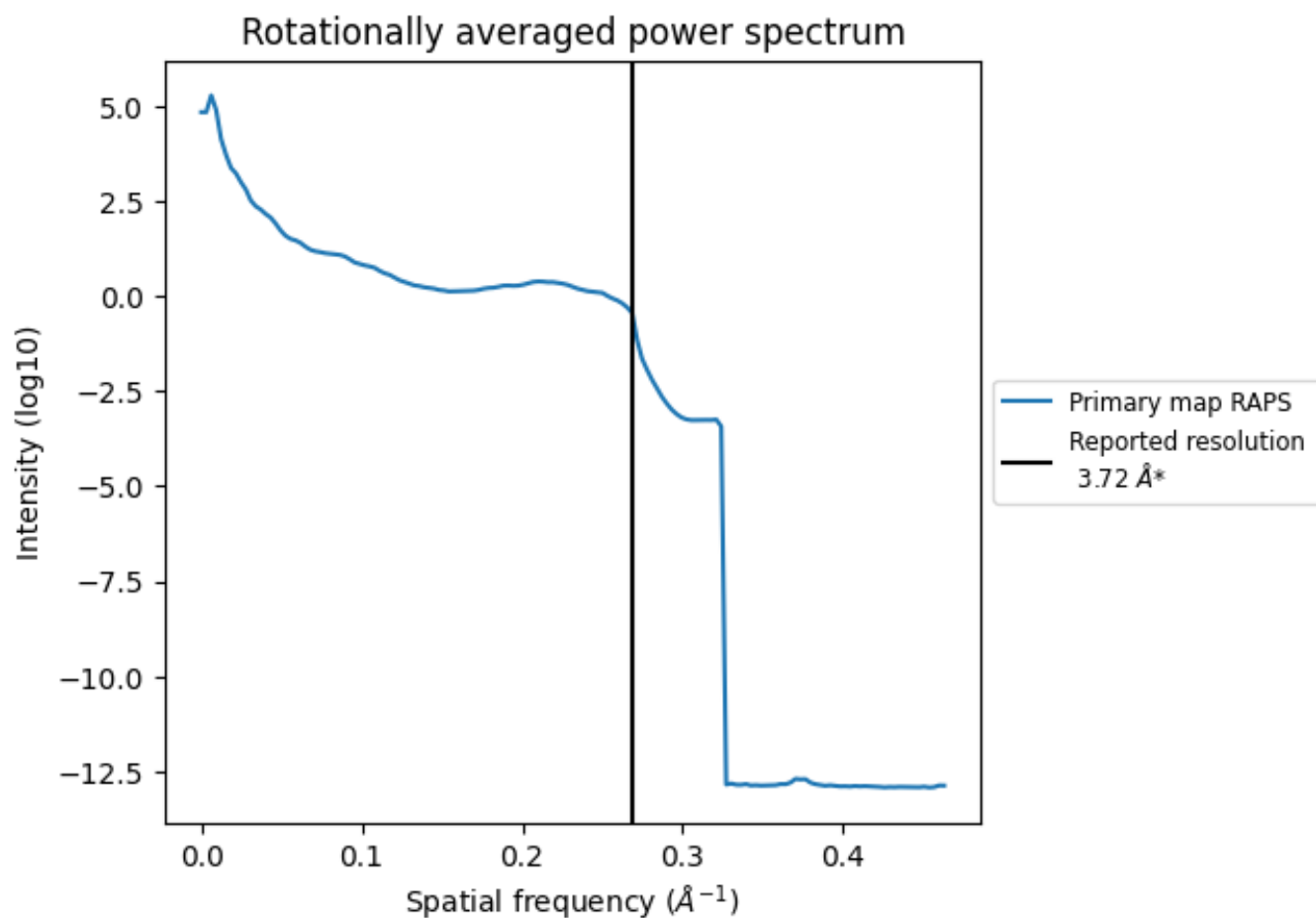
## 7.2 Volume estimate [i](#)



The volume at the recommended contour level is 249 nm<sup>3</sup>; this corresponds to an approximate mass of 225 kDa.

The volume estimate graph shows how the enclosed volume varies with the contour level. The recommended contour level is shown as a vertical line and the intersection between the line and the curve gives the volume of the enclosed surface at the given level.

### 7.3 Rotationally averaged power spectrum [i](#)



\*Reported resolution corresponds to spatial frequency of 0.269 Å<sup>-1</sup>

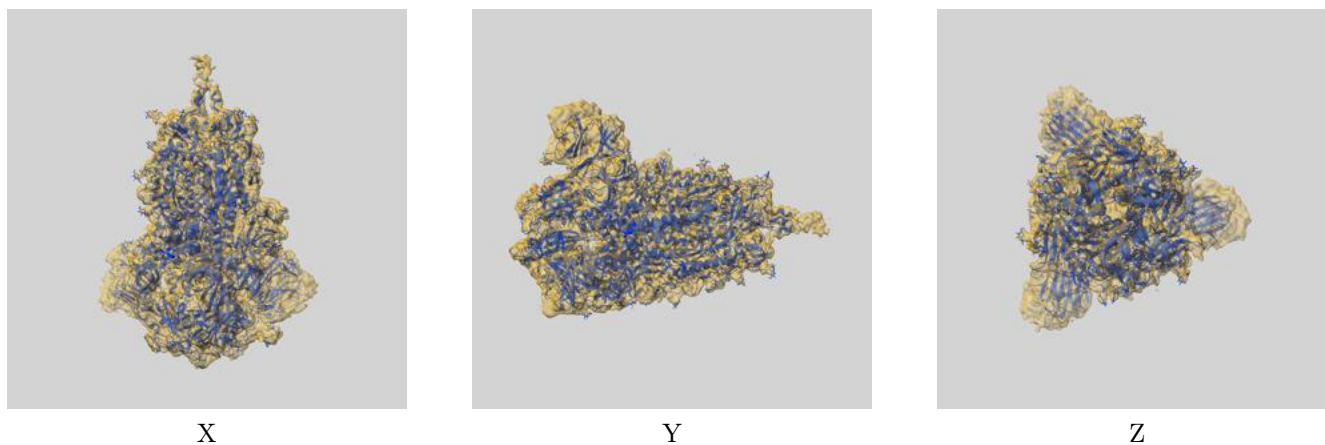
## 8 Fourier-Shell correlation

This section was not generated. No FSC curve or half-maps provided.

## 9 Map-model fit [i](#)

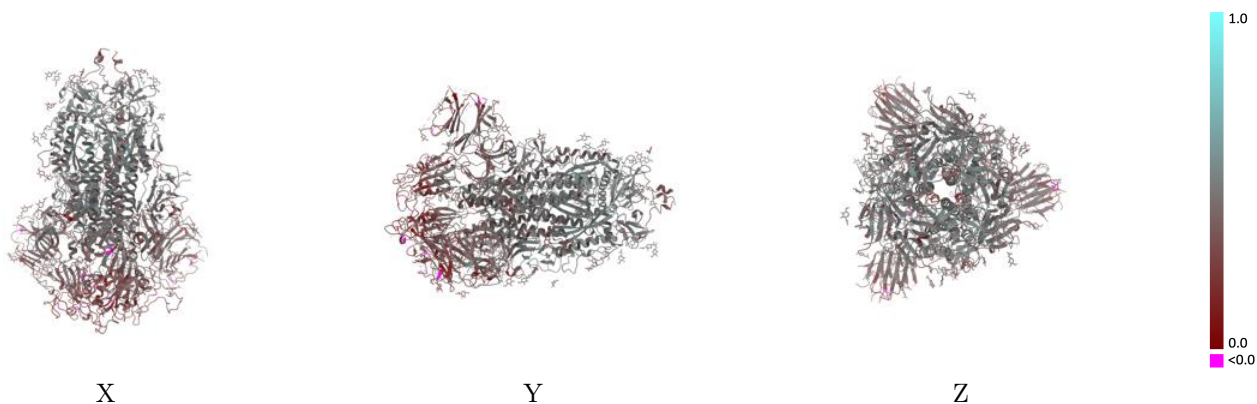
This section contains information regarding the fit between EMDB map EMD-26046 and PDB model 7TP2. Per-residue inclusion information can be found in section [3](#) on page [14](#).

### 9.1 Map-model overlay [i](#)



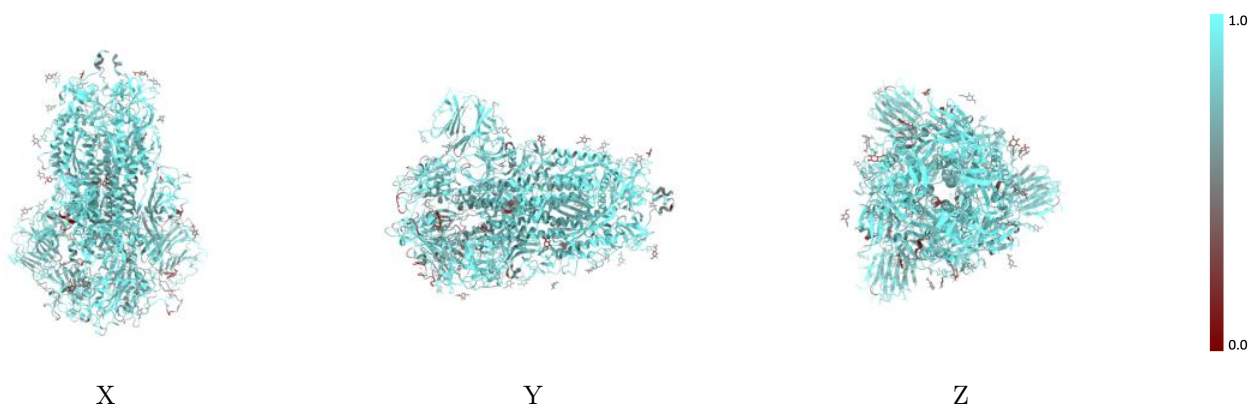
The images above show the 3D surface view of the map at the recommended contour level 0.8 at 50% transparency in yellow overlaid with a ribbon representation of the model coloured in blue. These images allow for the visual assessment of the quality of fit between the atomic model and the map.

## 9.2 Q-score mapped to coordinate model [i](#)



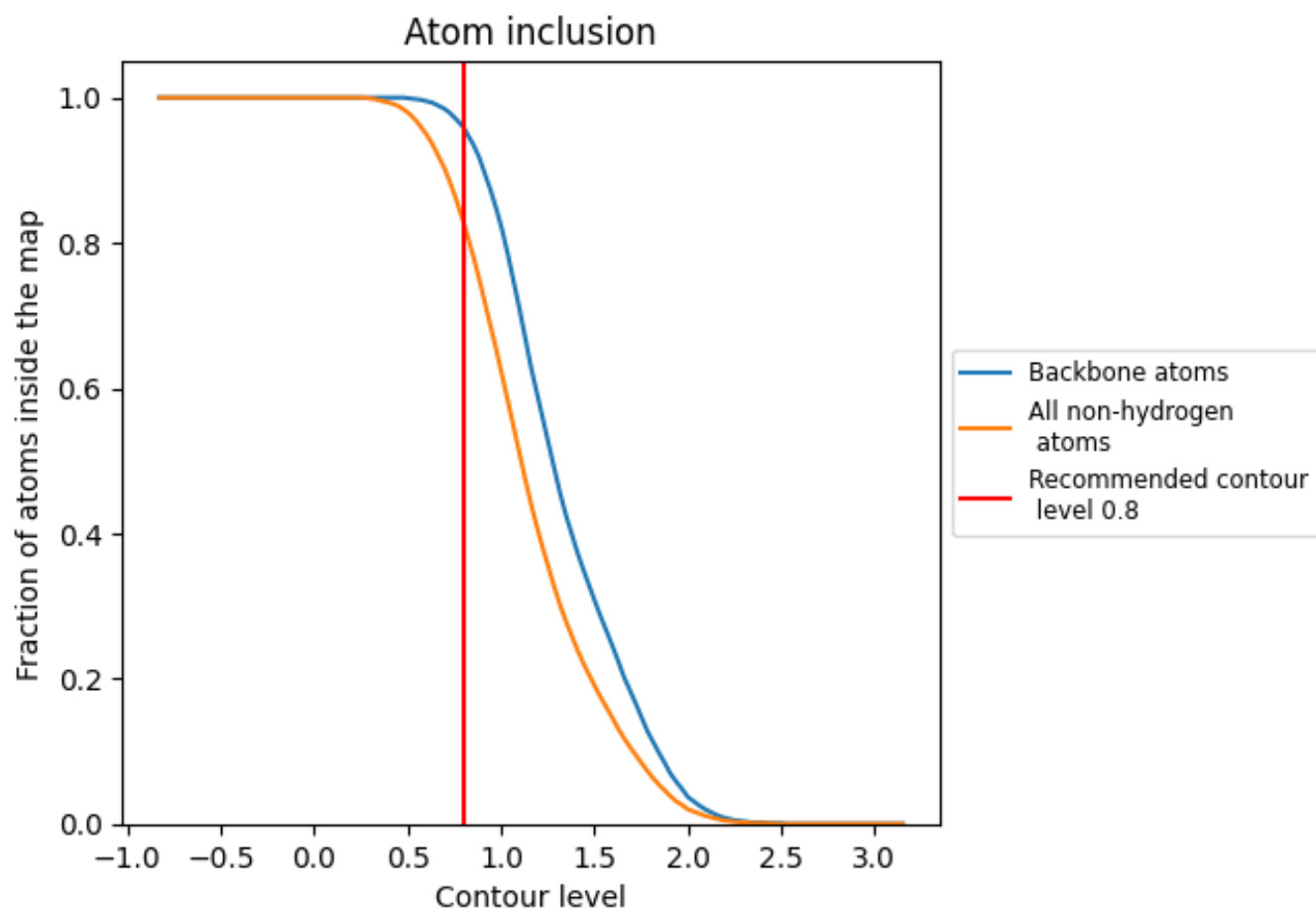
The images above show the model with each residue coloured according to its Q-score. This shows their resolvability in the map with higher Q-score values reflecting better resolvability. Please note: Q-score is calculating the resolvability of atoms, and thus high values are only expected at resolutions at which atoms can be resolved. Low Q-score values may therefore be expected for many entries.

## 9.3 Atom inclusion mapped to coordinate model [i](#)



The images above show the model with each residue coloured according to its atom inclusion. This shows to what extent they are inside the map at the recommended contour level (0.8).





































## 9.4 Atom inclusion [i](#)



At the recommended contour level, 96% of all backbone atoms, 83% of all non-hydrogen atoms, are inside the map.

## 9.5 Map-model fit summary

The table lists the average atom inclusion at the recommended contour level (0.8) and Q-score for the entire model and for each chain.

Chain	Atom inclusion	Q-score
All	 0.8280	 0.3990
A	 0.8380	 0.3990
B	 0.8300	 0.4030
C	 0.8330	 0.3940
D	 0.1790	 0.4130
E	 0.6790	 0.4250
F	 0.5710	 0.4260
G	 0.5710	 0.3760
H	 0.5360	 0.4160
I	 0.1430	 0.3210
J	 0.5710	 0.4080
K	 0.5360	 0.4370
L	 0.7140	 0.4770
M	 0.5710	 0.3900
N	 0.0710	 0.3430
O	 0.6790	 0.4280
P	 0.5360	 0.4220
Q	 0.6070	 0.3960

