



wwPDB EM Validation Summary Report ⓘ

Mar 28, 2026 – 08:55 AM UTC

PDB ID : 7TR6 / pdb_00007tr6
EMDB ID : EMD-26081
Title : Cascade complex from type I-A CRISPR-Cas system
Authors : Hu, C.; Ni, D.; Nam, K.H.; Majumdar, S.; McLean, J.; Stahlberg, H.; Terns, M.; Ke, A.
Deposited on : 2022-01-28
Resolution : 3.40 Å(reported)

This is a wwPDB EM Validation Summary Report for a publicly released PDB entry.

We welcome your comments at validation@mail.wwpdb.org

A user guide is available at

<https://www.wwpdb.org/validation/2017/EMValidationReportHelp>

with specific help available everywhere you see the ⓘ symbol.

The types of validation reports are described at

<http://www.wwpdb.org/validation/2017/FAQs#types>.

The following versions of software and data (see [references ⓘ](#)) were used in the production of this report:

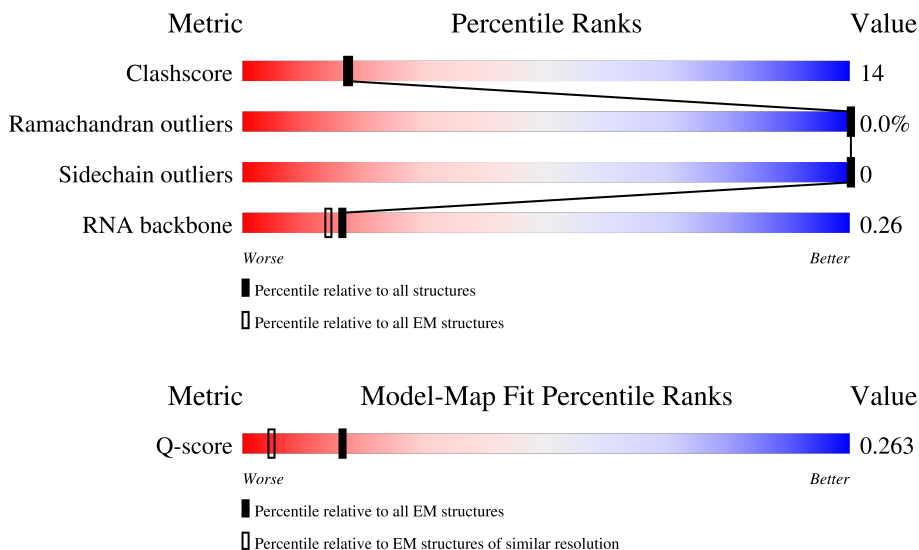
EMDB validation analysis : 0.0.1.dev132
MolProbity : 4-5-2 with Phenix2.0
Percentile statistics : 20250101.v01 (using entries in the PDB archive January 1st 2025)
EM percentile statistics : 202505.v01 (Using data in the EMDB archive up until May 2025)
MapQ : 1.9.13
Ideal geometry (proteins) : Engh & Huber (2001)
Ideal geometry (DNA, RNA) : Parkinson et al. (1996)
Validation Pipeline (wwPDB-VP) : 2.49

1 Overall quality at a glance i

The following experimental techniques were used to determine the structure:
ELECTRON MICROSCOPY

The reported resolution of this entry is 3.40 Å.

Percentile scores (ranging between 0-100) for global validation metrics of the entry are shown in the following graphic. The table shows the number of entries on which the scores are based.














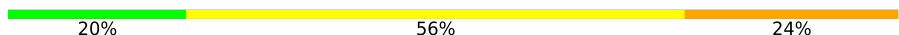
Metric	Whole archive (#Entries)	EM structures (#Entries)	Similar EM resolution (#Entries, resolution range(Å))
Clashscore	229148	23984	-
Ramachandran outliers	224038	23583	-
Sidechain outliers	223484	23102	-
RNA backbone	8273	3508	-
Q-score	-	25397	14717 (2.90 - 3.90)

The table below summarises the geometric issues observed across the polymeric chains and their fit to the map. The red, orange, yellow and green segments of the bar indicate the fraction of residues that contain outliers for ≥ 3 , 2, 1 and 0 types of geometric quality criteria respectively. A grey segment represents the fraction of residues that are not modelled. The numeric value for each fraction is indicated below the corresponding segment, with a dot representing fractions $\leq 5\%$. The upper red bar (where present) indicates the fraction of residues that have poor fit to the EM map (all-atom inclusion $< 40\%$). The numeric value is given above the bar.

Mol	Chain	Length	Quality of chain
1	C	341	
2	D	108	
2	E	108	

Continued on next page...

Continued from previous page...

Mol	Chain	Length	Quality of chain
2	F	108	 71% 28%
2	G	108	 66% 33%
2	H	108	 5% 81% 18%
3	I	336	 30% 65% 35%
3	J	336	 7% 67% 33%
3	K	336	 65% 35%
3	L	336	 72% 28%
3	M	336	 70% 30%
3	N	336	 66% 29%
3	O	336	 57% 24% 18%
4	P	256	 64% 57% 36% 6%
5	R	45	 20% 56% 24%

2 Entry composition [i](#)

There are 5 unique types of molecules in this entry. The entry contains 27449 atoms, of which 0 are hydrogens and 0 are deuteriums.

In the tables below, the AltConf column contains the number of residues with at least one atom in alternate conformation and the Trace column contains the number of residues modelled with at most 2 atoms.

- Molecule 1 is a protein called Cas8a.

Mol	Chain	Residues	Atoms					AltConf	Trace
			Total	C	N	O	S		
1	C	333	2662	1730	439	484	9	0	0

There are 6 discrepancies between the modelled and reference sequences:

Chain	Residue	Modelled	Actual	Comment	Reference
C	24	VAL	GLU	conflict	UNP Q8U338
C	64	SER	GLU	conflict	UNP Q8U338
C	110	LEU	VAL	conflict	UNP Q8U338
C	?	-	SER	deletion	UNP Q8U338
C	?	-	LEU	deletion	UNP Q8U338
C	?	-	GLY	deletion	UNP Q8U338

- Molecule 2 is a protein called Cas11a.

Mol	Chain	Residues	Atoms					AltConf	Trace
			Total	C	N	O	S		
2	D	107	856	550	144	160	2	0	0
2	E	108	860	552	145	161	2	0	0
2	F	107	856	550	144	160	2	0	0
2	G	107	856	550	144	160	2	0	0
2	H	107	856	550	144	160	2	0	0

- Molecule 3 is a protein called Cas7a.

Mol	Chain	Residues	Atoms					AltConf	Trace
			Total	C	N	O	S		
3	I	335	2597	1655	450	487	5	0	0

Continued on next page...

Continued from previous page...

Mol	Chain	Residues	Atoms					AltConf	Trace
3	J	336	Total	C	N	O	S	0	0
			2603	1659	451	488	5		
3	K	336	Total	C	N	O	S	0	0
			2596	1656	448	487	5		
3	L	336	Total	C	N	O	S	0	0
			2597	1656	448	488	5		
3	M	336	Total	C	N	O	S	0	0
			2597	1656	448	488	5		
3	N	321	Total	C	N	O	S	0	0
			2494	1595	431	463	5		
3	O	274	Total	C	N	O	S	0	0
			2134	1370	364	396	4		

- Molecule 4 is a protein called Cas5a.

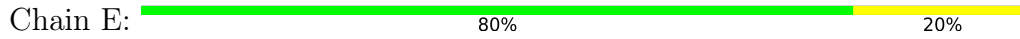
Mol	Chain	Residues	Atoms					AltConf	Trace
4	P	240	Total	C	N	O	S	0	0
			1936	1266	315	349	6		

There is a discrepancy between the modelled and reference sequences:

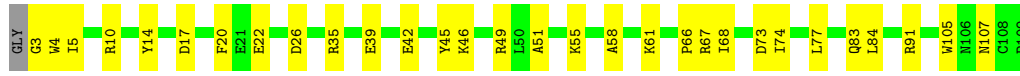
Chain	Residue	Modelled	Actual	Comment	Reference
P	?	-	THR	deletion	UNP A0A5C0XNV9

- Molecule 5 is a RNA chain called crRNA (45-MER).

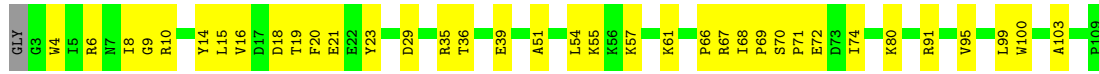
Mol	Chain	Residues	Atoms					AltConf	Trace
5	R	45	Total	C	N	O	P	0	0
			949	427	166	312	44		



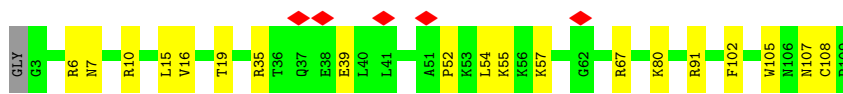
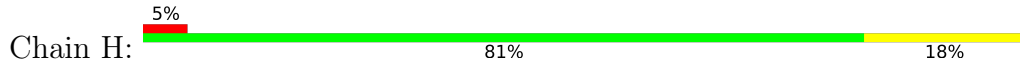
• Molecule 2: Cas11a



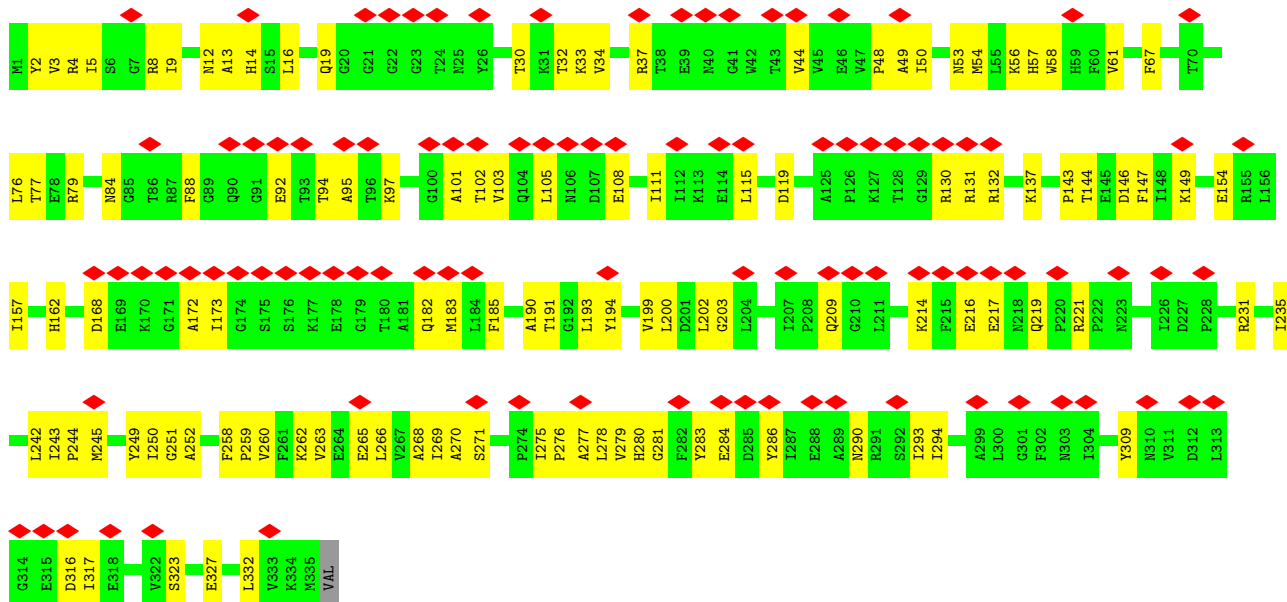
• Molecule 2: Cas11a



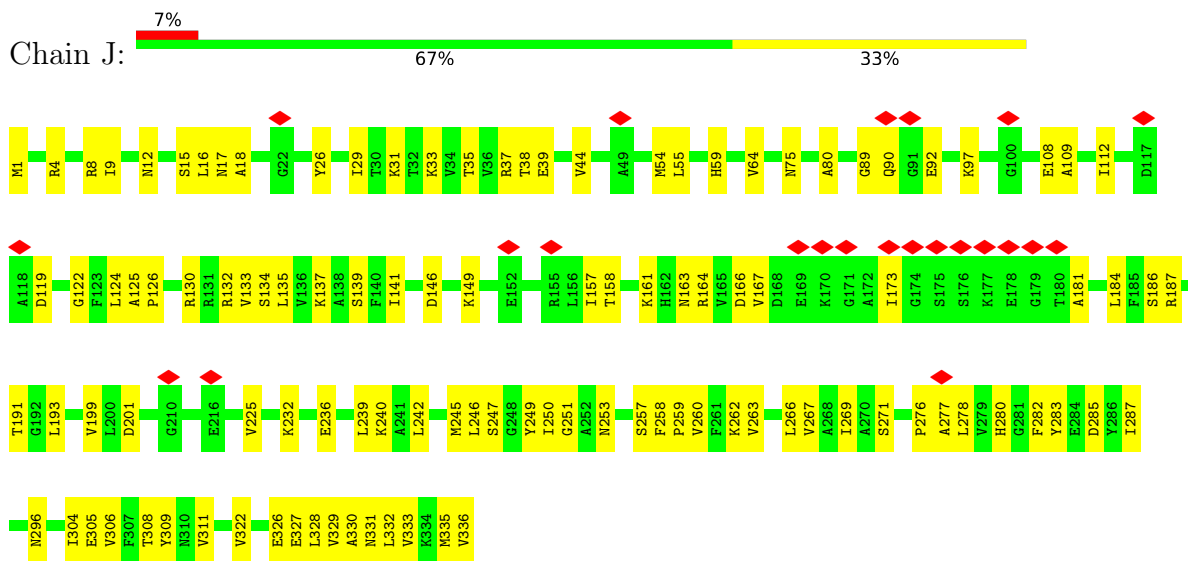
• Molecule 2: Cas11a



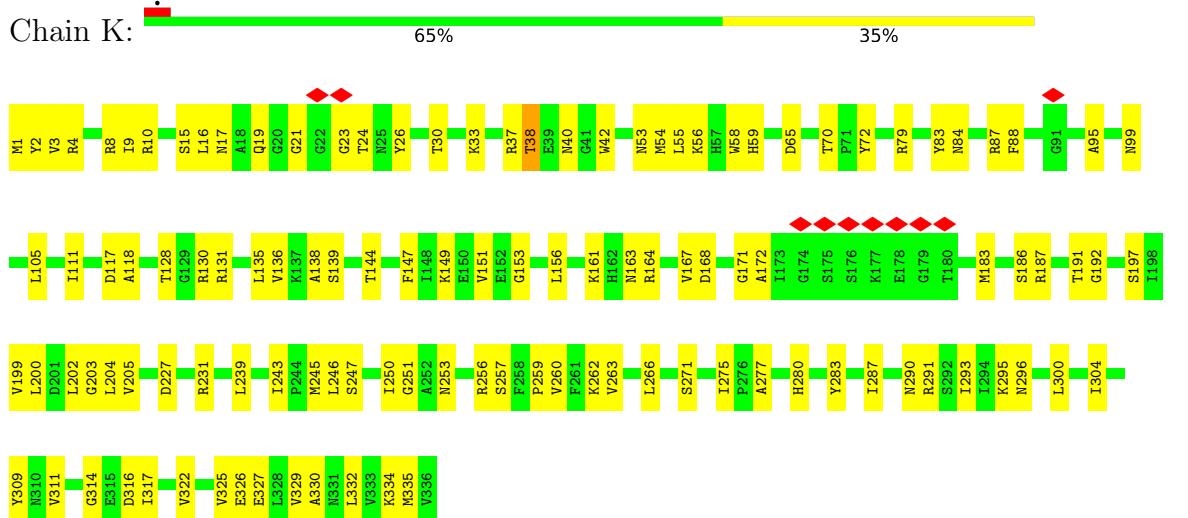
• Molecule 3: Cas7a



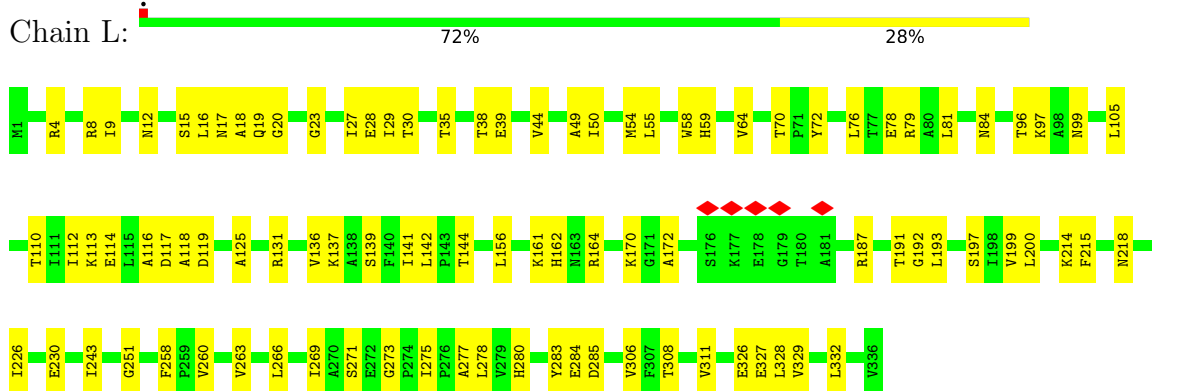
• Molecule 3: Cas7a



• Molecule 3: Cas7a

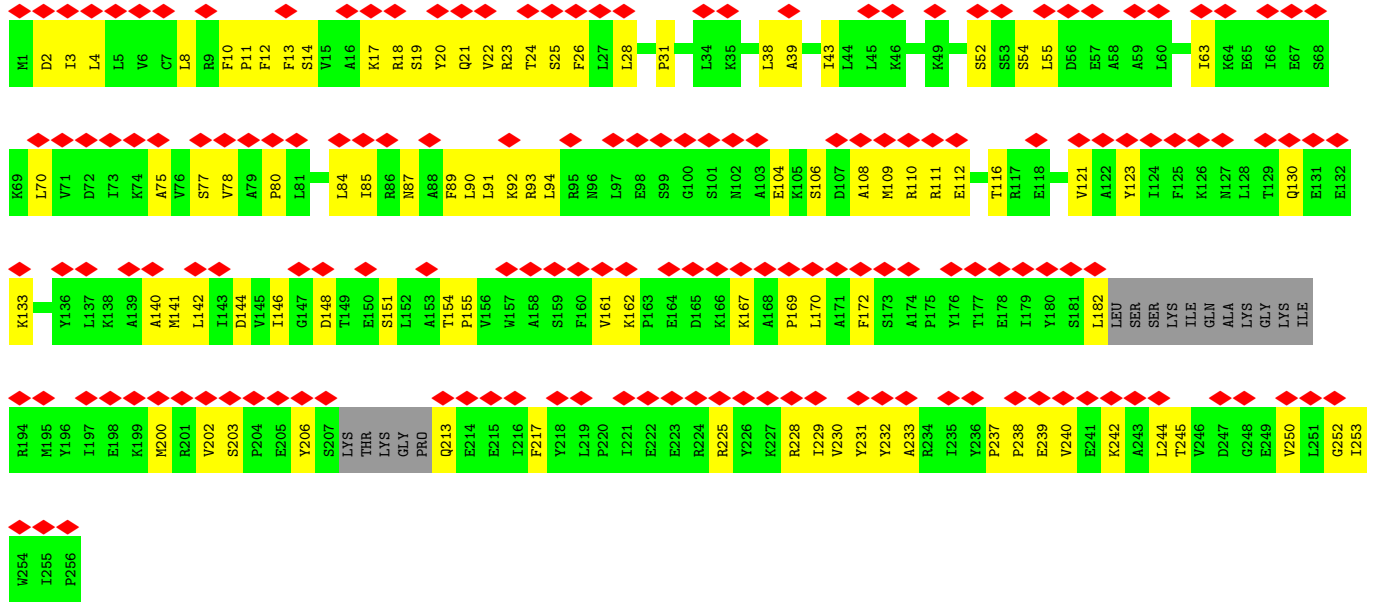


• Molecule 3: Cas7a

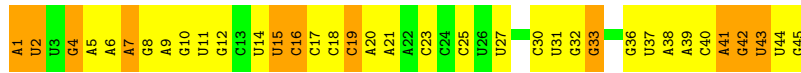
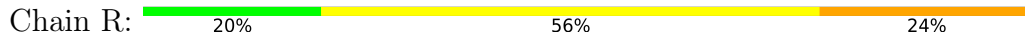


• Molecule 3: Cas7a





• Molecule 5: crRNA (45-MER)



4 Experimental information

Property	Value	Source
EM reconstruction method	SINGLE PARTICLE	Depositor
Imposed symmetry	POINT, Not provided	
Number of particles used	79651	Depositor
Resolution determination method	FSC 0.143 CUT-OFF	Depositor
CTF correction method	PHASE FLIPPING AND AMPLITUDE CORRECTION	Depositor
Microscope	TFS TALOS	Depositor
Voltage (kV)	200	Depositor
Electron dose ($e^-/\text{\AA}^2$)	50	Depositor
Minimum defocus (nm)	1000	Depositor
Maximum defocus (nm)	2500	Depositor
Magnification	Not provided	
Image detector	GATAN K3 BIOQUANTUM (6k x 4k)	Depositor
Maximum map value	1.119	Depositor
Minimum map value	-0.465	Depositor
Average map value	-0.000	Depositor
Map value standard deviation	0.033	Depositor
Recommended contour level	0.13	Depositor
Map size (Å)	381.3, 381.3, 381.3	wwPDB
Map dimensions	384, 384, 384	wwPDB
Map angles (°)	90.0, 90.0, 90.0	wwPDB
Pixel spacing (Å)	0.99296874, 0.99296874, 0.99296874	Depositor

5 Model quality [i](#)

5.1 Standard geometry [i](#)

The Z score for a bond length (or angle) is the number of standard deviations the observed value is removed from the expected value. A bond length (or angle) with $|Z| > 5$ is considered an outlier worth inspection. RMSZ is the root-mean-square of all Z scores of the bond lengths (or angles).

Mol	Chain	Bond lengths		Bond angles	
		RMSZ	# Z >5	RMSZ	# Z >5
1	C	0.14	0/2723	0.38	0/3684
2	D	0.11	0/876	0.33	0/1188
2	E	0.11	0/880	0.27	0/1193
2	F	0.11	0/876	0.28	0/1188
2	G	0.11	0/876	0.29	0/1188
2	H	0.12	0/876	0.31	0/1188
3	I	0.12	0/2645	0.34	0/3583
3	J	0.13	0/2651	0.33	0/3592
3	K	0.14	0/2644	0.32	0/3584
3	L	0.13	0/2645	0.30	0/3585
3	M	0.13	0/2645	0.29	0/3585
3	N	0.14	0/2541	0.33	1/3445 (0.0%)
3	O	0.12	0/2173	0.27	0/2946
4	P	0.13	0/1977	0.37	0/2673
5	R	0.13	0/1060	0.27	0/1649
All	All	0.13	0/28088	0.32	1/38271 (0.0%)

There are no bond length outliers.

All (1) bond angle outliers are listed below:

Mol	Chain	Res	Type	Atoms	Z	Observed($^{\circ}$)	Ideal($^{\circ}$)
3	N	38	THR	CB-CA-C	-5.63	110.07	116.54

There are no chirality outliers.

There are no planarity outliers.

5.2 Too-close contacts [i](#)

In the following table, the Non-H and H(model) columns list the number of non-hydrogen atoms and hydrogen atoms in the chain respectively. The H(added) column lists the number of hydrogen atoms added and optimized by MolProbity. The Clashes column lists the number of clashes within the asymmetric unit, whereas Symm-Clashes lists symmetry-related clashes.

Mol	Chain	Non-H	H(model)	H(added)	Clashes	Symm-Clashes
1	C	2662	0	2668	74	0
2	D	856	0	860	39	0
2	E	860	0	863	14	0
2	F	856	0	860	22	0
2	G	856	0	860	29	0
2	H	856	0	860	13	0
3	I	2597	0	2628	103	0
3	J	2603	0	2635	85	0
3	K	2596	0	2621	98	0
3	L	2597	0	2624	73	0
3	M	2597	0	2624	78	0
3	N	2494	0	2524	80	0
3	O	2134	0	2168	54	0
4	P	1936	0	2018	75	0
5	R	949	0	481	43	0
All	All	27449	0	27294	748	0

The all-atom clashscore is defined as the number of clashes found per 1000 atoms (including hydrogen atoms). The all-atom clashscore for this structure is 14.

The worst 5 of 748 close contacts within the same asymmetric unit are listed below, sorted by their clash magnitude.

Atom-1	Atom-2	Interatomic distance (Å)	Clash overlap (Å)
4:P:110:ARG:NH1	4:P:112:GLU:OE1	2.15	0.80
3:L:4:ARG:HG3	3:L:199:VAL:HG23	1.65	0.79
3:N:324:SER:OG	3:O:296:ASN:ND2	2.19	0.75
3:K:38:THR:HG22	3:K:40:ASN:H	1.52	0.74
3:N:58:TRP:NE1	3:N:251:GLY:O	2.20	0.73

There are no symmetry-related clashes.

5.3 Torsion angles [i](#)

5.3.1 Protein backbone [i](#)

In the following table, the Percentiles column shows the percent Ramachandran outliers of the chain as a percentile score with respect to all PDB entries followed by that with respect to all EM entries.

The Analysed column shows the number of residues for which the backbone conformation was analysed, and the total number of residues.

Mol	Chain	Analysed	Favoured	Allowed	Outliers	Percentiles	
1	C	329/341 (96%)	307 (93%)	22 (7%)	0	100	100
2	D	105/108 (97%)	100 (95%)	5 (5%)	0	100	100
2	E	106/108 (98%)	102 (96%)	4 (4%)	0	100	100
2	F	105/108 (97%)	97 (92%)	8 (8%)	0	100	100
2	G	105/108 (97%)	96 (91%)	9 (9%)	0	100	100
2	H	105/108 (97%)	100 (95%)	5 (5%)	0	100	100
3	I	333/336 (99%)	302 (91%)	31 (9%)	0	100	100
3	J	334/336 (99%)	307 (92%)	27 (8%)	0	100	100
3	K	334/336 (99%)	317 (95%)	16 (5%)	1 (0%)	36	65
3	L	334/336 (99%)	315 (94%)	19 (6%)	0	100	100
3	M	334/336 (99%)	307 (92%)	27 (8%)	0	100	100
3	N	317/336 (94%)	297 (94%)	20 (6%)	0	100	100
3	O	266/336 (79%)	254 (96%)	12 (4%)	0	100	100
4	P	234/256 (91%)	218 (93%)	16 (7%)	0	100	100
All	All	3341/3489 (96%)	3119 (93%)	221 (7%)	1 (0%)	100	100

All (1) Ramachandran outliers are listed below:

Mol	Chain	Res	Type
3	K	38	THR

5.3.2 Protein sidechains [i](#)

In the following table, the Percentiles column shows the percent sidechain outliers of the chain as a percentile score with respect to all PDB entries followed by that with respect to all EM entries.

The Analysed column shows the number of residues for which the sidechain conformation was analysed, and the total number of residues.

Mol	Chain	Analysed	Rotameric	Outliers	Percentiles	
1	C	282/292 (97%)	282 (100%)	0	100	100
2	D	91/91 (100%)	91 (100%)	0	100	100
2	E	91/91 (100%)	91 (100%)	0	100	100
2	F	91/91 (100%)	91 (100%)	0	100	100
2	G	91/91 (100%)	91 (100%)	0	100	100

Continued on next page...

Continued from previous page...

Mol	Chain	Analysed	Rotameric	Outliers	Percentiles	
2	H	91/91 (100%)	91 (100%)	0	100	100
3	I	275/277 (99%)	275 (100%)	0	100	100
3	J	276/277 (100%)	276 (100%)	0	100	100
3	K	274/277 (99%)	274 (100%)	0	100	100
3	L	275/277 (99%)	275 (100%)	0	100	100
3	M	275/277 (99%)	275 (100%)	0	100	100
3	N	264/277 (95%)	264 (100%)	0	100	100
3	O	230/277 (83%)	230 (100%)	0	100	100
4	P	211/224 (94%)	211 (100%)	0	100	100
All	All	2817/2910 (97%)	2817 (100%)	0	100	100

There are no protein residues with a non-rotameric sidechain to report.

Sometimes sidechains can be flipped to improve hydrogen bonding and reduce clashes. 5 of 13 such sidechains are listed below:

Mol	Chain	Res	Type
3	L	331	ASN
3	M	19	GLN
3	O	296	ASN
3	N	17	ASN
3	N	57	HIS

5.3.3 RNA [i](#)

Mol	Chain	Analysed	Backbone Outliers	Pucker Outliers
5	R	45/45 (100%)	16 (35%)	2 (4%)

5 of 16 RNA backbone outliers are listed below:

Mol	Chain	Res	Type
5	R	2	U
5	R	4	G
5	R	7	A
5	R	9	A
5	R	15	U

All (2) RNA pucker outliers are listed below:

Mol	Chain	Res	Type
5	R	1	A
5	R	18	C

5.4 Non-standard residues in protein, DNA, RNA chains [i](#)

There are no non-standard protein/DNA/RNA residues in this entry.

5.5 Carbohydrates [i](#)

There are no oligosaccharides in this entry.

5.6 Ligand geometry [i](#)

There are no ligands in this entry.

5.7 Other polymers [i](#)

There are no such residues in this entry.

5.8 Polymer linkage issues [i](#)

There are no chain breaks in this entry.

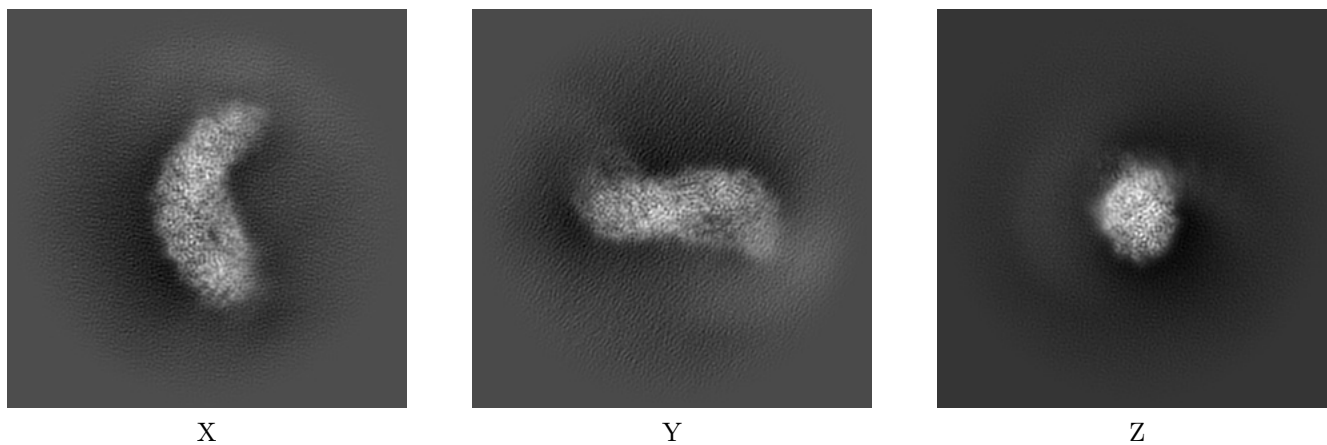
6 Map visualisation [i](#)

This section contains visualisations of the EMDB entry EMD-26081. These allow visual inspection of the internal detail of the map and identification of artifacts.

No raw map or half-maps were deposited for this entry and therefore no images, graphs, etc. pertaining to the raw map can be shown.

6.1 Orthogonal projections [i](#)

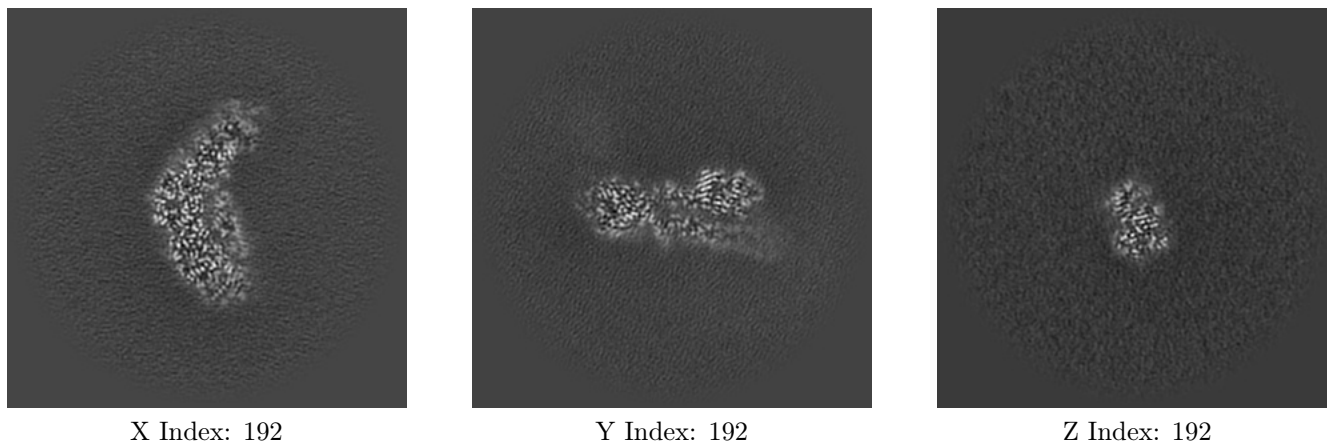
6.1.1 Primary map



The images above show the map projected in three orthogonal directions.

6.2 Central slices [i](#)

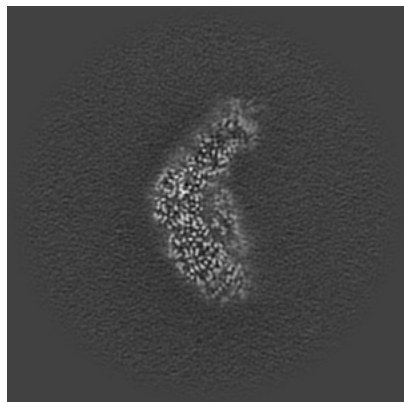
6.2.1 Primary map



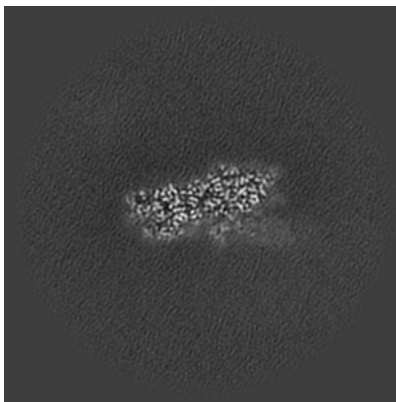
The images above show central slices of the map in three orthogonal directions.

6.3 Largest variance slices [i](#)

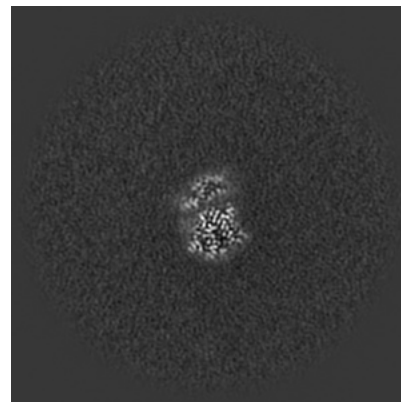
6.3.1 Primary map



X Index: 191



Y Index: 176

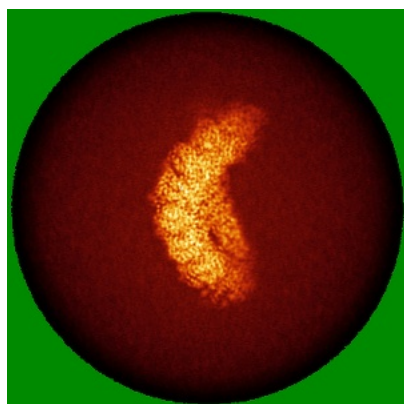


Z Index: 179

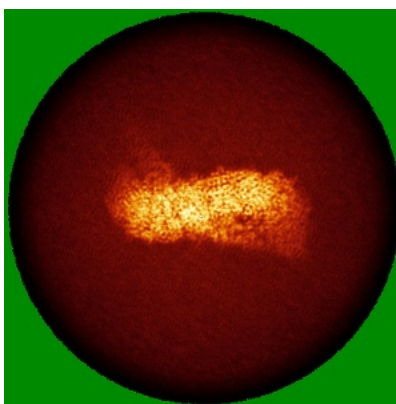
The images above show the largest variance slices of the map in three orthogonal directions.

6.4 Orthogonal standard-deviation projections (False-color) [i](#)

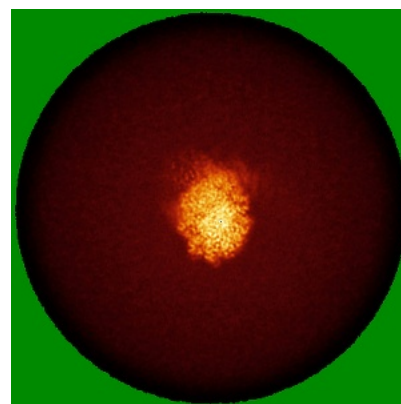
6.4.1 Primary map



X



Y

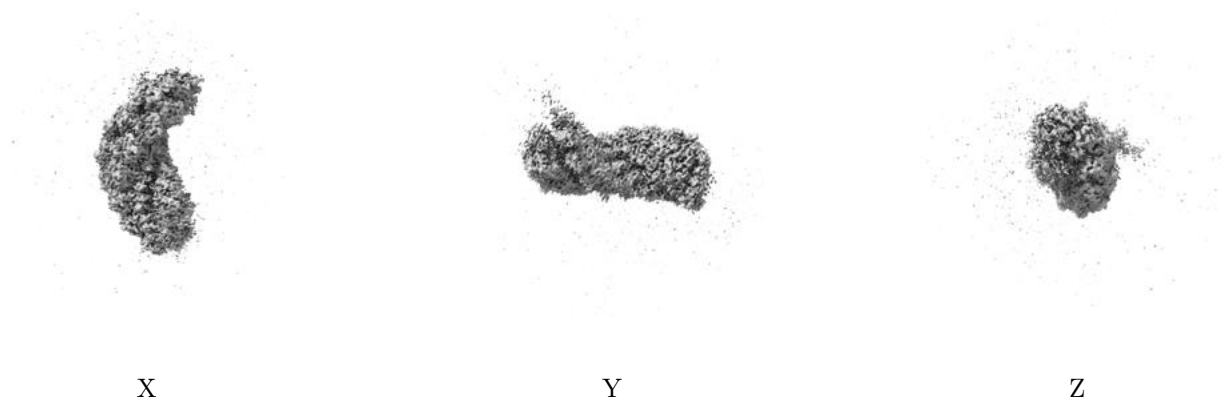


Z

The images above show the map standard deviation projections with false color in three orthogonal directions. Minimum values are shown in green, max in blue, and dark to light orange shades represent small to large values respectively.

6.5 Orthogonal surface views [i](#)

6.5.1 Primary map



The images above show the 3D surface view of the map at the recommended contour level 0.13. These images, in conjunction with the slice images, may facilitate assessment of whether an appropriate contour level has been provided.

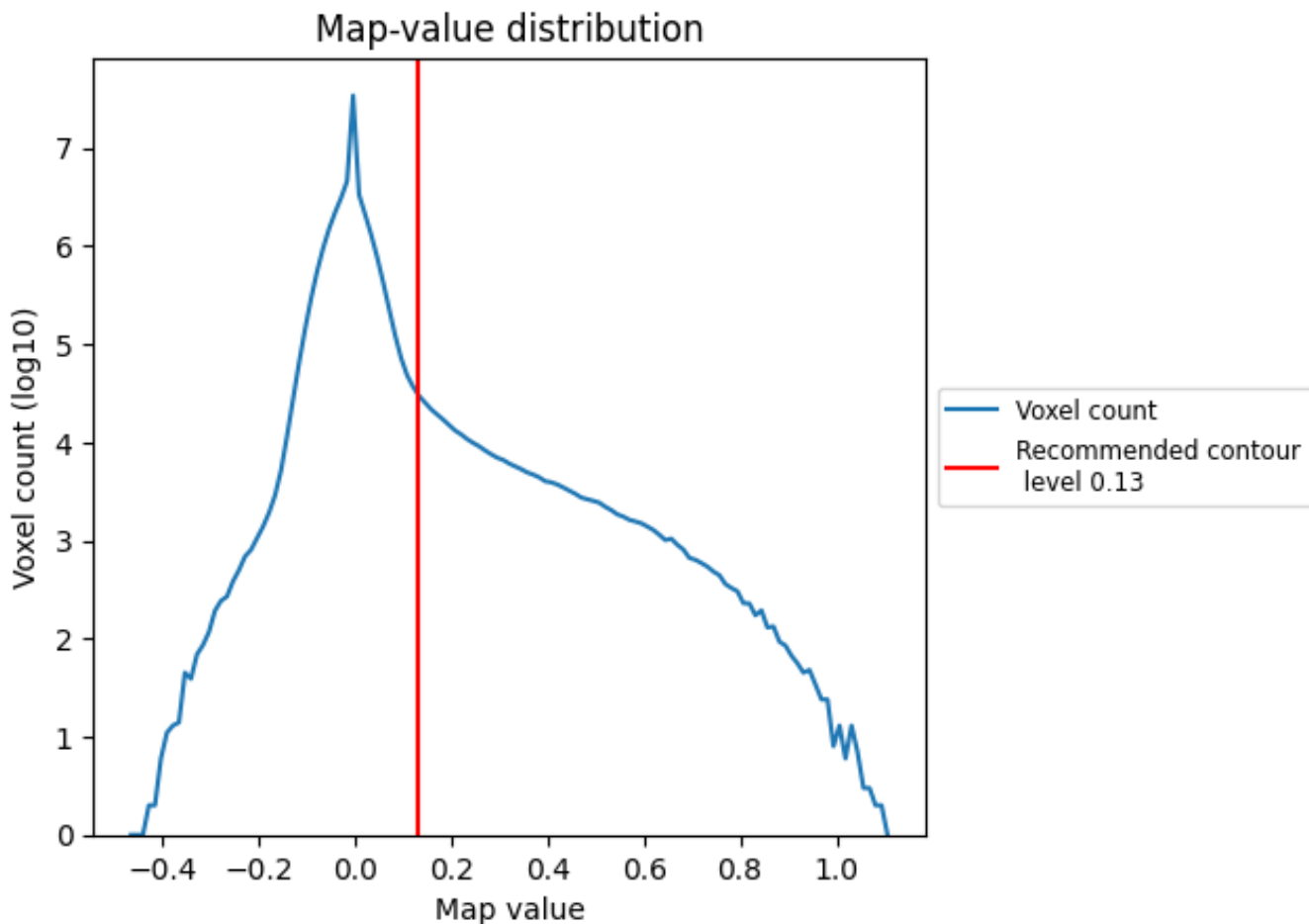
6.6 Mask visualisation [i](#)

This section was not generated. No masks/segmentation were deposited.

7 Map analysis [i](#)

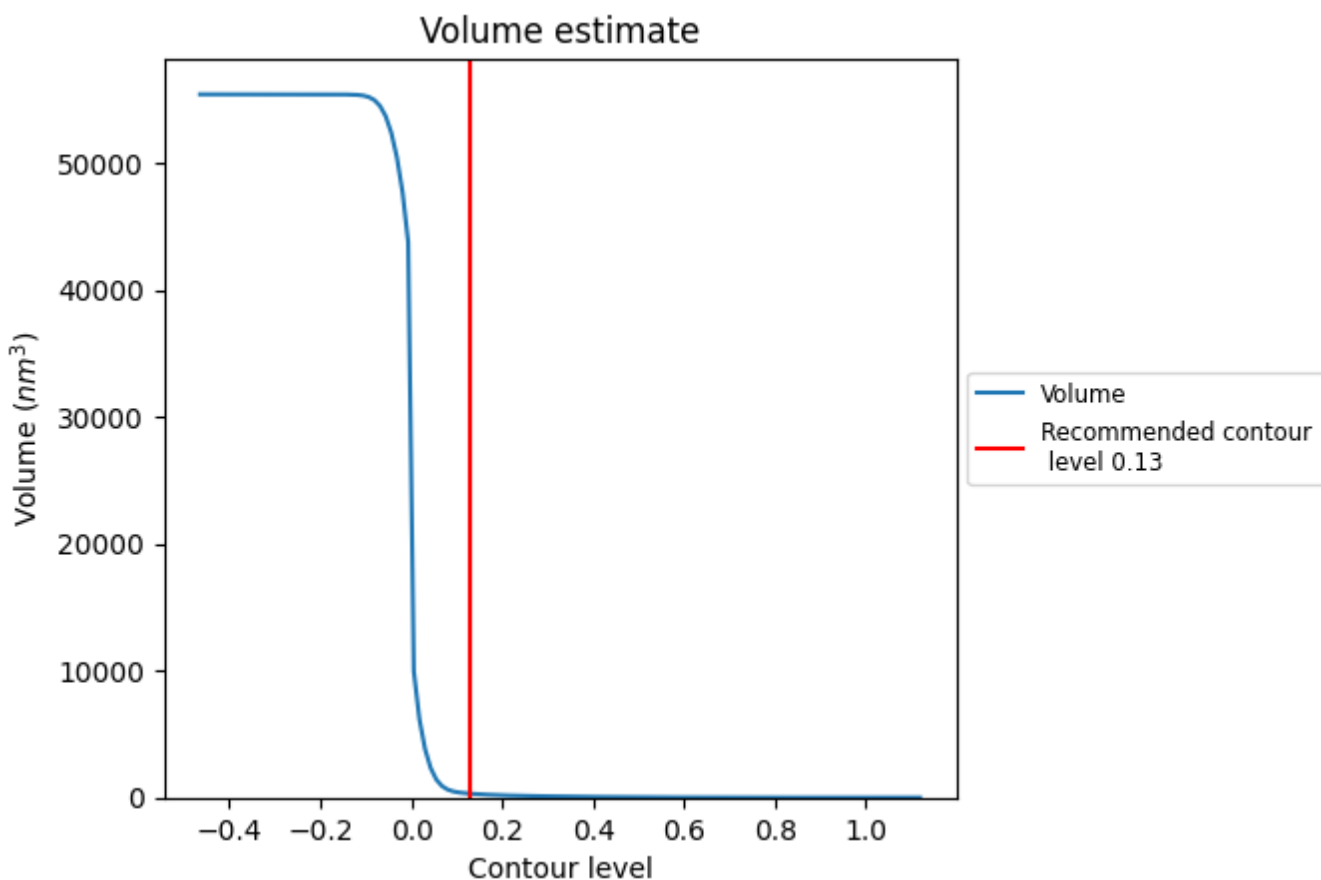
This section contains the results of statistical analysis of the map.

7.1 Map-value distribution [i](#)



The map-value distribution is plotted in 128 intervals along the x-axis. The y-axis is logarithmic. A spike in this graph at zero usually indicates that the volume has been masked.

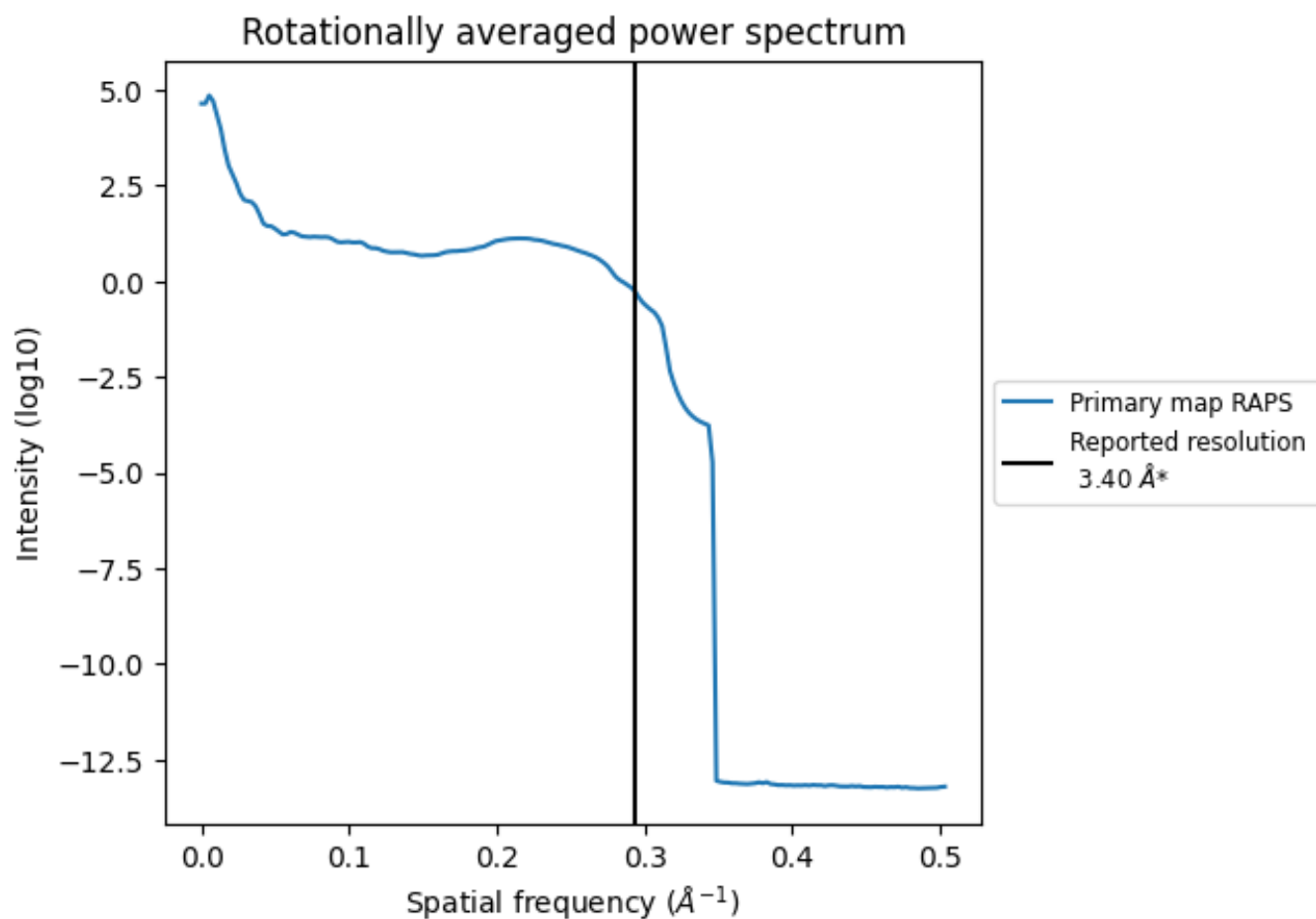
7.2 Volume estimate [i](#)



The volume at the recommended contour level is 306 nm³; this corresponds to an approximate mass of 276 kDa.

The volume estimate graph shows how the enclosed volume varies with the contour level. The recommended contour level is shown as a vertical line and the intersection between the line and the curve gives the volume of the enclosed surface at the given level.

7.3 Rotationally averaged power spectrum [i](#)



*Reported resolution corresponds to spatial frequency of 0.294 Å⁻¹

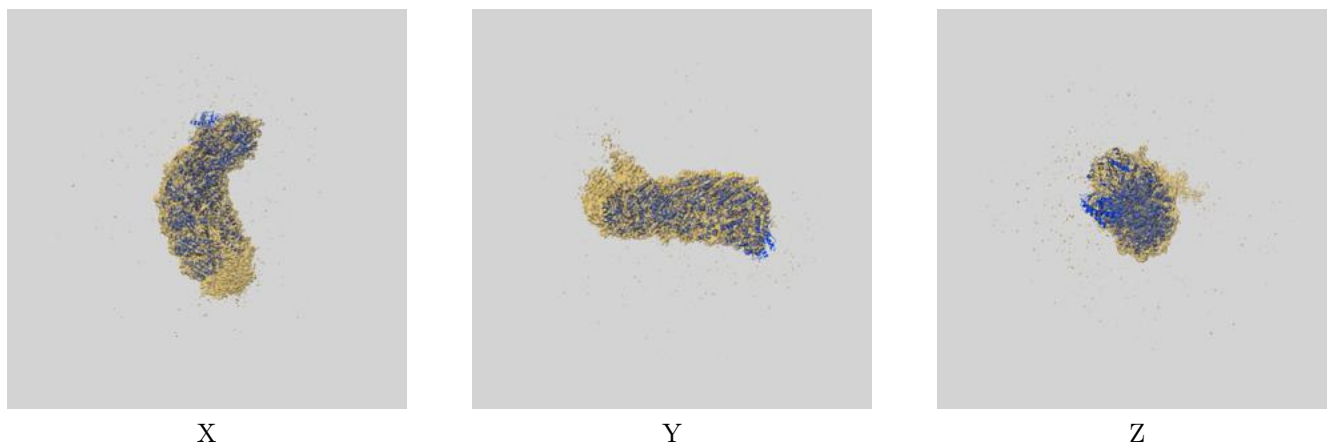
8 Fourier-Shell correlation

This section was not generated. No FSC curve or half-maps provided.

9 Map-model fit [i](#)

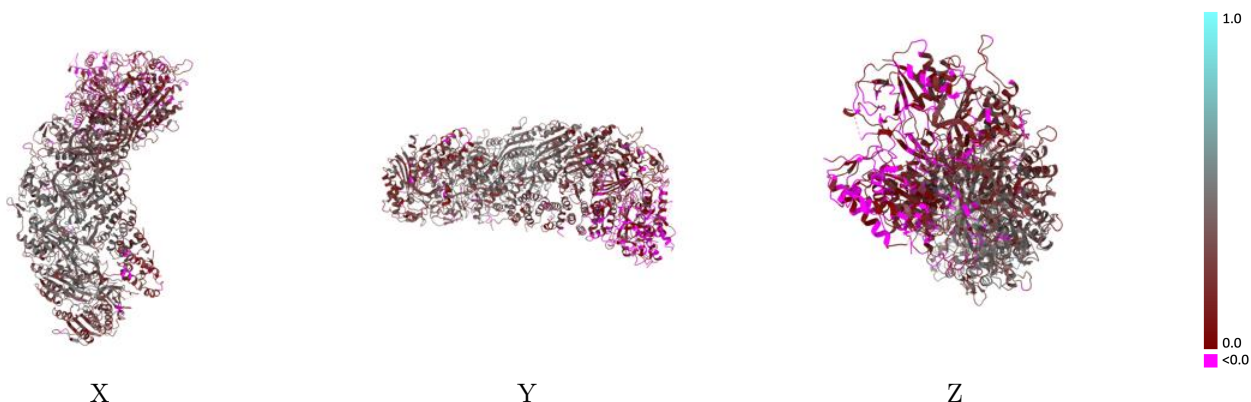
This section contains information regarding the fit between EMDB map EMD-26081 and PDB model 7TR6. Per-residue inclusion information can be found in section [3](#) on page [6](#).

9.1 Map-model overlay [i](#)



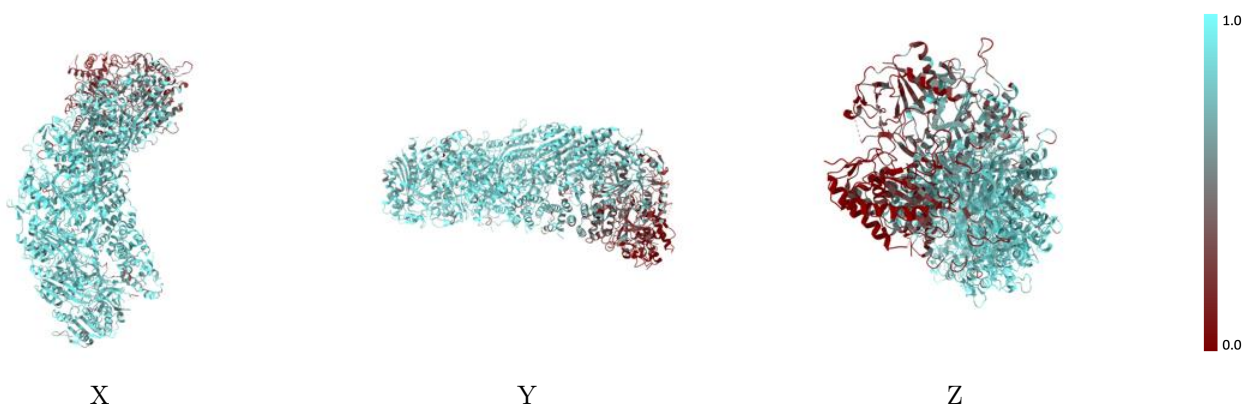
The images above show the 3D surface view of the map at the recommended contour level 0.13 at 50% transparency in yellow overlaid with a ribbon representation of the model coloured in blue. These images allow for the visual assessment of the quality of fit between the atomic model and the map.

9.2 Q-score mapped to coordinate model [i](#)



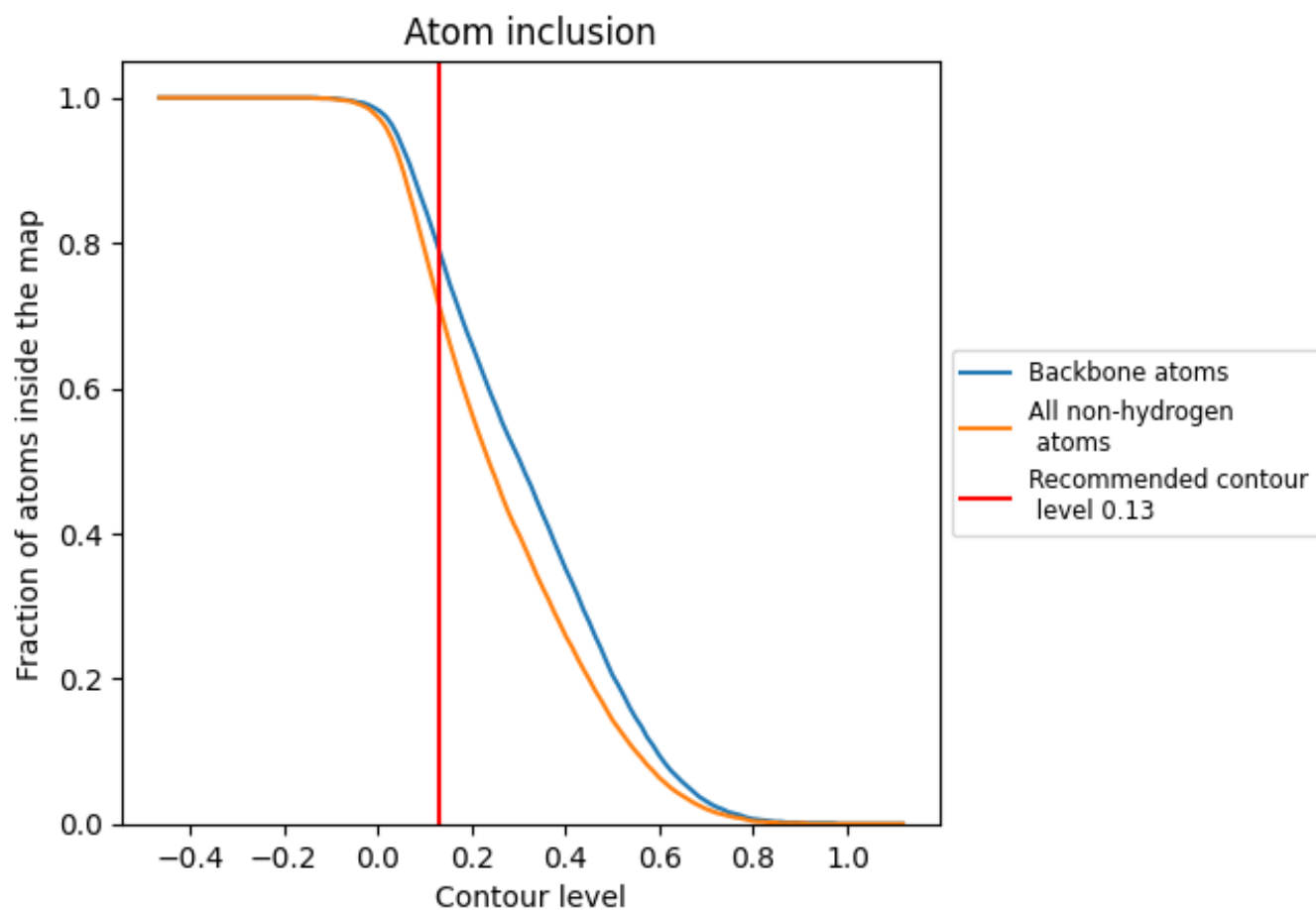
The images above show the model with each residue coloured according to its Q-score. This shows their resolvability in the map with higher Q-score values reflecting better resolvability. Please note: Q-score is calculating the resolvability of atoms, and thus high values are only expected at resolutions at which atoms can be resolved. Low Q-score values may therefore be expected for many entries.

9.3 Atom inclusion mapped to coordinate model [i](#)



The images above show the model with each residue coloured according to its atom inclusion. This shows to what extent they are inside the map at the recommended contour level (0.13).

































9.4 Atom inclusion [i](#)



At the recommended contour level, 79% of all backbone atoms, 72% of all non-hydrogen atoms, are inside the map.

9.5 Map-model fit summary

The table lists the average atom inclusion at the recommended contour level (0.13) and Q-score for the entire model and for each chain.

Chain	Atom inclusion	Q-score
All	 0.7160	 0.2630
C	 0.1970	 0.0430
D	 0.7130	 0.2140
E	 0.8800	 0.3200
F	 0.9170	 0.3670
G	 0.8930	 0.3150
H	 0.7930	 0.1850
I	 0.5330	 0.1520
J	 0.7630	 0.2730
K	 0.8520	 0.3570
L	 0.9070	 0.3940
M	 0.8940	 0.3920
N	 0.8700	 0.3540
O	 0.8140	 0.2720
P	 0.2880	 0.0450
R	 0.8530	 0.3050

