



wwPDB X-ray Structure Validation Summary Report ⓘ

Mar 8, 2026 – 06:08 AM UTC

PDB ID : 7TS3 / pdb_00007ts3
Title : Structure of human neuronal nitric oxide synthase R354A/G357D mutant heme domain in complex with 6-(3-(3,3-difluoroazetid-1-yl)prop-1-yn-1-yl)-4-methylpyridin-2-amine
Authors : Li, H.; Poulos, T.L.
Deposited on : 2022-01-31
Resolution : 2.10 Å(reported)

This is a wwPDB X-ray Structure Validation Summary Report for a publicly released PDB entry.

We welcome your comments at validation@mail.wwpdb.org

A user guide is available at

<https://www.wwpdb.org/validation/2017/XrayValidationReportHelp>

with specific help available everywhere you see the ⓘ symbol.

The types of validation reports are described at

<http://www.wwpdb.org/validation/2017/FAQs#types>.

The following versions of software and data (see [references ⓘ](#)) were used in the production of this report:

MolProbity : 4-5-2 with Phenix2.0
Mogul : 2022.3.0, CSD as543be (2022)
Xtrriage (Phenix) : 2.0
EDS : 3.0
Buster-report : wwPDB partial adaption of 1.1.7 (2018)
Percentile statistics : 20250101.v01 (using entries in the PDB archive January 1st 2025)
CCP4 : 9.0.010 (Gargrove)
Density-Fitness : 1.0.12
Ideal geometry (proteins) : Engh & Huber (2001)
Ideal geometry (DNA, RNA) : Parkinson et al. (1996)
Validation Pipeline (wwPDB-VP) : 2.49

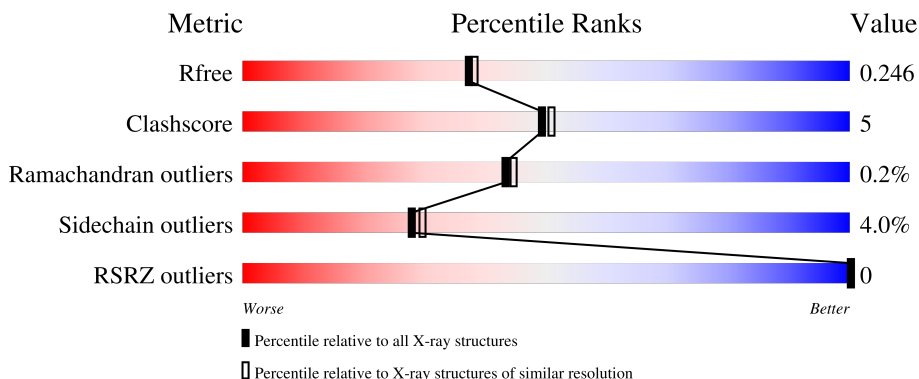
1 Overall quality at a glance

The following experimental techniques were used to determine the structure:

X-RAY DIFFRACTION

The reported resolution of this entry is 2.10 Å.

Percentile scores (ranging between 0-100) for global validation metrics of the entry are shown in the following graphic. The table shows the number of entries on which the scores are based.



Metric	Whole archive (#Entries)	Similar resolution (#Entries, resolution range(Å))
R_{free}	180053	6658 (2.10-2.10)
Clashscore	190562	7164 (2.10-2.10)
Ramachandran outliers	187476	7099 (2.10-2.10)
Sidechain outliers	187428	7100 (2.10-2.10)
RSRZ outliers	180081	6662 (2.10-2.10)

The table below summarises the geometric issues observed across the polymeric chains and their fit to the electron density. The red, orange, yellow and green segments of the lower bar indicate the fraction of residues that contain outliers for ≥ 3 , 2, 1 and 0 types of geometric quality criteria respectively. A grey segment represents the fraction of residues that are not modelled. The numeric value for each fraction is indicated below the corresponding segment, with a dot representing fractions $\leq 5\%$. The upper red bar (where present) indicates the fraction of residues that have poor fit to the electron density. The numeric value is given above the bar.

Mol	Chain	Length	Quality of chain
1	A	423	 83% 16% ..
1	B	423	 83% 13% ..
1	C	423	 84% 13% ..
1	D	423	 84% 12% ..

2 Entry composition [i](#)

There are 7 unique types of molecules in this entry. The entry contains 14875 atoms, of which 0 are hydrogens and 0 are deuteriums.

In the tables below, the ZeroOcc column contains the number of atoms modelled with zero occupancy, the AltConf column contains the number of residues with at least one atom in alternate conformation and the Trace column contains the number of residues modelled with at most 2 atoms.

- Molecule 1 is a protein called Nitric oxide synthase, brain.

Mol	Chain	Residues	Atoms					ZeroOcc	AltConf	Trace
			Total	C	N	O	S			
1	A	420	3442	2202	590	628	22	0	5	0
1	B	413	3371	2161	574	615	21	0	2	0
1	C	418	3417	2186	585	625	21	0	3	0
1	D	411	3355	2150	572	612	21	0	2	0

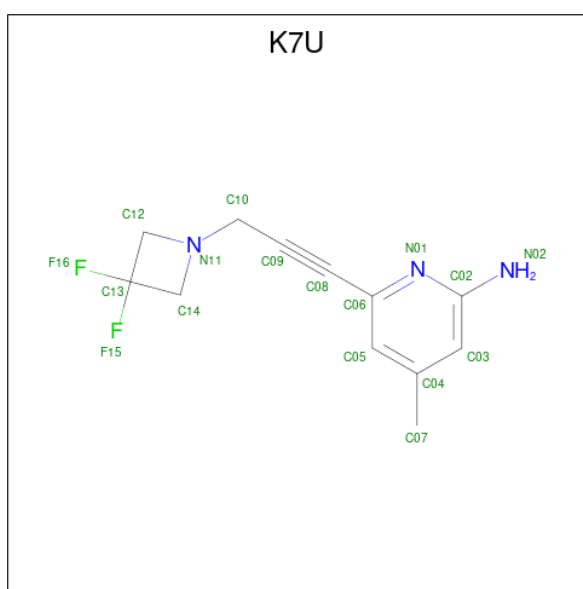
There are 16 discrepancies between the modelled and reference sequences:

Chain	Residue	Modelled	Actual	Comment	Reference
A	354	ALA	ARG	engineered mutation	UNP P29475
A	357	ASP	GLY	engineered mutation	UNP P29475
A	723	LEU	-	expression tag	UNP P29475
A	724	VAL	-	expression tag	UNP P29475
B	354	ALA	ARG	engineered mutation	UNP P29475
B	357	ASP	GLY	engineered mutation	UNP P29475
B	723	LEU	-	expression tag	UNP P29475
B	724	VAL	-	expression tag	UNP P29475
C	354	ALA	ARG	engineered mutation	UNP P29475
C	357	ASP	GLY	engineered mutation	UNP P29475
C	723	LEU	-	expression tag	UNP P29475
C	724	VAL	-	expression tag	UNP P29475
D	354	ALA	ARG	engineered mutation	UNP P29475
D	357	ASP	GLY	engineered mutation	UNP P29475
D	723	LEU	-	expression tag	UNP P29475
D	724	VAL	-	expression tag	UNP P29475

- Molecule 2 is PROTOPORPHYRIN IX CONTAINING FE (CCD ID: HEM) (formula: $C_{34}H_{32}FeN_4O_4$).

Mol	Chain	Residues	Atoms				ZeroOcc	AltConf
3	A	1	Total	C	N	O	0	0
			17	9	5	3		
3	B	1	Total	C	N	O	0	0
			17	9	5	3		
3	C	1	Total	C	N	O	0	0
			17	9	5	3		
3	D	1	Total	C	N	O	0	0
			17	9	5	3		

- Molecule 4 is 6-[3-(3,3-difluoroazetidin-1-yl)prop-1-yn-1-yl]-4-methylpyridin-2-amine (CCD ID: K7U) (formula: C₁₂H₁₃F₂N₃) (labeled as "Ligand of Interest" by depositor).



Mol	Chain	Residues	Atoms				ZeroOcc	AltConf
4	A	1	Total	C	F	N	0	0
			17	12	2	3		
4	B	1	Total	C	F	N	0	0
			17	12	2	3		
4	C	1	Total	C	F	N	0	0
			17	12	2	3		
4	D	1	Total	C	F	N	0	0
			17	12	2	3		

- Molecule 5 is GLYCEROL (CCD ID: GOL) (formula: C₃H₈O₃).



Mol	Chain	Residues	Atoms	ZeroOcc	AltConf
5	A	1	Total C O 6 3 3	0	0
5	A	1	Total C O 6 3 3	0	0
5	B	1	Total C O 6 3 3	0	0
5	C	1	Total C O 6 3 3	0	0
5	C	1	Total C O 6 3 3	0	0
5	D	1	Total C O 6 3 3	0	0

- Molecule 6 is ZINC ION (CCD ID: ZN) (formula: Zn).

Mol	Chain	Residues	Atoms	ZeroOcc	AltConf
6	A	1	Total Zn 1 1	0	0
6	C	1	Total Zn 1 1	0	0

- Molecule 7 is water.

Mol	Chain	Residues	Atoms	ZeroOcc	AltConf
7	A	212	Total O 212 212	0	0

Continued on next page...


Continued from previous page...

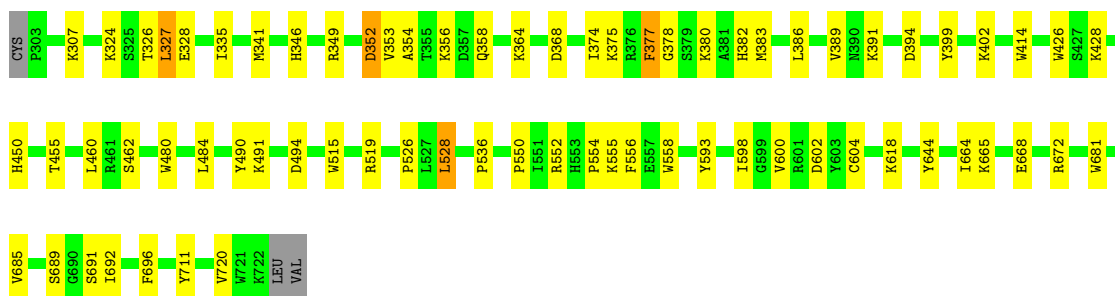
Mol	Chain	Residues	Atoms		ZeroOcc	AltConf
7	B	265	Total 265	O 265	0	0
7	C	213	Total 213	O 213	0	0
7	D	254	Total 254	O 254	0	0

3 Residue-property plots [i](#)


These plots are drawn for all protein, RNA, DNA and oligosaccharide chains in the entry. The first graphic for a chain summarises the proportions of the various outlier classes displayed in the second graphic. The second graphic shows the sequence view annotated by issues in geometry and electron density. Residues are color-coded according to the number of geometric quality criteria for which they contain at least one outlier: green = 0, yellow = 1, orange = 2 and red = 3 or more. A red dot above a residue indicates a poor fit to the electron density ($RSRZ > 2$). Stretches of 2 or more consecutive residues without any outlier are shown as a green connector. Residues present in the sample, but not in the model, are shown in grey.

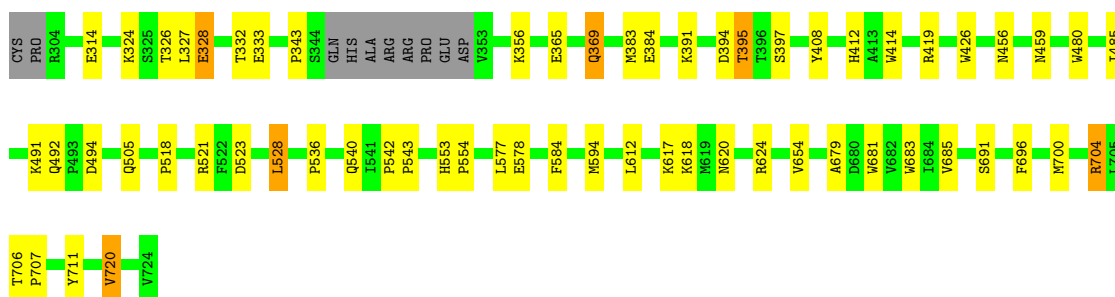
- Molecule 1: Nitric oxide synthase, brain

Chain A:  83% 16% ..




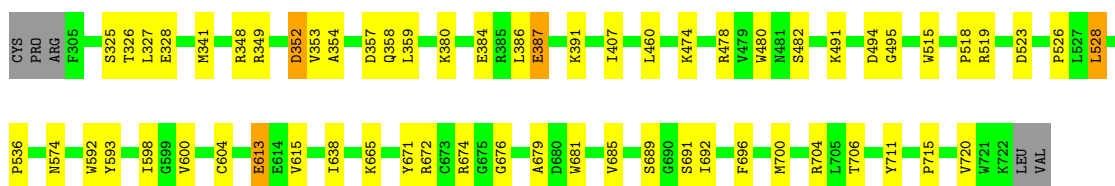
- Molecule 1: Nitric oxide synthase, brain

Chain B:  83% 13% ..



- Molecule 1: Nitric oxide synthase, brain

Chain C:  84% 13% ..



- Molecule 1: Nitric oxide synthase, brain

4 Data and refinement statistics i

Property	Value	Source
Space group	P 1 21 1	Depositor
Cell constants a, b, c, α , β , γ	52.01Å 163.98Å 117.31Å 90.00° 90.00° 90.00°	Depositor
Resolution (Å)	49.59 – 2.10 49.59 – 2.10	Depositor EDS
% Data completeness (in resolution range)	99.4 (49.59-2.10) 99.8 (49.59-2.10)	Depositor EDS
R_{merge}	0.25	Depositor
R_{sym}	(Not available)	Depositor
$\langle I/\sigma(I) \rangle$ ¹	1.15 (at 2.10Å)	Xtrriage
Refinement program	PHENIX 1.11.1_2575	Depositor
R, R_{free}	0.201 , 0.253 0.191 , 0.246	Depositor DCC
R_{free} test set	5754 reflections (2.97%)	wwPDB-VP
Wilson B-factor (Å ²)	26.8	Xtrriage
Anisotropy	1.110	Xtrriage
Bulk solvent k_{sol} (e/Å ³), B_{sol} (Å ²)	0.34 , 32.9	EDS
L-test for twinning ²	$\langle L \rangle = 0.51$, $\langle L^2 \rangle = 0.35$	Xtrriage
Estimated twinning fraction	0.468 for h,-k,-l	Xtrriage
F_o, F_c correlation	0.97	EDS
Total number of atoms	14875	wwPDB-VP
Average B, all atoms (Å ²)	41.0	wwPDB-VP

Xtrriage's analysis on translational NCS is as follows: *The largest off-origin peak in the Patterson function is 4.11% of the height of the origin peak. No significant pseudotranslation is detected.*

¹Intensities estimated from amplitudes.

²Theoretical values of $\langle |L| \rangle$, $\langle L^2 \rangle$ for acentric reflections are 0.5, 0.333 respectively for untwinned datasets, and 0.375, 0.2 for perfectly twinned datasets.

5 Model quality [i](#)

5.1 Standard geometry [i](#)

Bond lengths and bond angles in the following residue types are not validated in this section: HEM, K7U, ZN, GOL, H4B

The Z score for a bond length (or angle) is the number of standard deviations the observed value is removed from the expected value. A bond length (or angle) with $|Z| > 5$ is considered an outlier worth inspection. RMSZ is the root-mean-square of all Z scores of the bond lengths (or angles).

Mol	Chain	Bond lengths		Bond angles	
		RMSZ	# Z >5	RMSZ	# Z >5
1	A	0.30	0/3556	0.51	0/4827
1	B	0.32	0/3472	0.53	0/4710
1	C	0.30	0/3524	0.49	0/4783
1	D	0.32	0/3456	0.52	0/4689
All	All	0.31	0/14008	0.51	0/19009

Chiral center outliers are detected by calculating the chiral volume of a chiral center and verifying if the center is modelled as a planar moiety or with the opposite hand. A planarity outlier is detected by checking planarity of atoms in a peptide group, atoms in a mainchain group or atoms of a sidechain that are expected to be planar.

Mol	Chain	#Chirality outliers	#Planarity outliers
1	D	0	1

There are no bond length outliers.

There are no bond angle outliers.

There are no chirality outliers.

All (1) planarity outliers are listed below:

Mol	Chain	Res	Type	Group
1	D	593	TYR	Peptide

5.2 Too-close contacts [i](#)

In the following table, the Non-H and H(model) columns list the number of non-hydrogen atoms and hydrogen atoms in the chain respectively. The H(added) column lists the number of hydrogen atoms added and optimized by MolProbity. The Clashes column lists the number of clashes within the asymmetric unit, whereas Symm-Clashes lists symmetry-related clashes.

Mol	Chain	Non-H	H(model)	H(added)	Clashes	Symm-Clashes
1	A	3442	0	3360	40	0
1	B	3371	0	3291	33	0
1	C	3417	0	3327	36	0
1	D	3355	0	3271	30	0
2	A	43	0	30	4	0
2	B	43	0	30	4	0
2	C	43	0	30	3	0
2	D	43	0	30	3	0
3	A	17	0	15	0	0
3	B	17	0	15	0	0
3	C	17	0	15	0	0
3	D	17	0	15	0	0
4	A	17	0	0	0	0
4	B	17	0	0	0	0
4	C	17	0	0	0	0
4	D	17	0	0	1	0
5	A	12	0	16	0	0
5	B	6	0	8	0	0
5	C	12	0	16	2	0
5	D	6	0	8	0	0
6	A	1	0	0	0	0
6	C	1	0	0	0	0
7	A	212	0	0	5	0
7	B	265	0	0	5	0
7	C	213	0	0	6	0
7	D	254	0	0	1	0
All	All	14875	0	13477	147	0

The all-atom clashscore is defined as the number of clashes found per 1000 atoms (including hydrogen atoms). The all-atom clashscore for this structure is 5.

The worst 5 of 147 close contacts within the same asymmetric unit are listed below, sorted by their clash magnitude.

Atom-1	Atom-2	Interatomic distance (Å)	Clash overlap (Å)
1:B:711:TYR:OH	2:B:801:HEM:O2D	1.87	0.93
1:A:356:LYS:NZ	1:A:394:ASP:OD2	2.10	0.85
1:B:704:ARG:HH11	1:B:704:ARG:HB3	1.40	0.85
1:C:528:LEU:HD22	1:C:536:PRO:HB2	1.61	0.82
1:C:711:TYR:OH	2:C:801:HEM:O2D	1.95	0.81

There are no symmetry-related clashes.

5.3 Torsion angles [i](#)

5.3.1 Protein backbone [i](#)

In the following table, the Percentiles column shows the percent Ramachandran outliers of the chain as a percentile score with respect to all X-ray entries followed by that with respect to entries of similar resolution.

The Analysed column shows the number of residues for which the backbone conformation was analysed, and the total number of residues.

Mol	Chain	Analysed	Favoured	Allowed	Outliers	Percentiles	
1	A	423/423 (100%)	403 (95%)	19 (4%)	1 (0%)	43	44
1	B	411/423 (97%)	398 (97%)	12 (3%)	1 (0%)	43	44
1	C	419/423 (99%)	396 (94%)	23 (6%)	0	100	100
1	D	409/423 (97%)	396 (97%)	12 (3%)	1 (0%)	43	44
All	All	1662/1692 (98%)	1593 (96%)	66 (4%)	3 (0%)	43	44

All (3) Ramachandran outliers are listed below:

Mol	Chain	Res	Type
1	D	343	PRO
1	A	377	PHE
1	B	343	PRO

5.3.2 Protein sidechains [i](#)

In the following table, the Percentiles column shows the percent sidechain outliers of the chain as a percentile score with respect to all X-ray entries followed by that with respect to entries of similar resolution.

The Analysed column shows the number of residues for which the sidechain conformation was analysed, and the total number of residues.

Mol	Chain	Analysed	Rotameric	Outliers	Percentiles	
1	A	380/378 (100%)	367 (97%)	13 (3%)	32	35
1	B	371/378 (98%)	351 (95%)	20 (5%)	20	18
1	C	376/378 (100%)	362 (96%)	14 (4%)	30	33
1	D	369/378 (98%)	356 (96%)	13 (4%)	32	35
All	All	1496/1512 (99%)	1436 (96%)	60 (4%)	28	29

5 of 60 residues with a non-rotameric sidechain are listed below:

Mol	Chain	Res	Type
1	B	578	GLU
1	D	532	ASN
1	C	352	ASP
1	D	528	LEU
1	D	650	LYS

Sometimes sidechains can be flipped to improve hydrogen bonding and reduce clashes. 5 of 11 such sidechains are listed below:

Mol	Chain	Res	Type
1	C	513	GLN
1	C	717	ASN
1	D	606	ASN
1	D	483	GLN
1	C	322	HIS

5.3.3 RNA [i](#)

There are no RNA molecules in this entry.

5.4 Non-standard residues in protein, DNA, RNA chains [i](#)

There are no non-standard protein/DNA/RNA residues in this entry.

5.5 Carbohydrates [i](#)

There are no oligosaccharides in this entry.

5.6 Ligand geometry [i](#)

Of 20 ligands modelled in this entry, 2 are monoatomic - leaving 18 for Mogul analysis.

In the following table, the Counts columns list the number of bonds (or angles) for which Mogul statistics could be retrieved, the number of bonds (or angles) that are observed in the model and the number of bonds (or angles) that are defined in the Chemical Component Dictionary. The Link column lists molecule types, if any, to which the group is linked. The Z score for a bond length (or angle) is the number of standard deviations the observed value is removed from the expected value. A bond length (or angle) with $|Z| > 2$ is considered an outlier worth inspection. RMSZ is the root-mean-square of all Z scores of the bond lengths (or angles).

Mol	Type	Chain	Res	Link	Bond lengths			Bond angles		
					Counts	RMSZ	# Z > 2	Counts	RMSZ	# Z > 2
4	K7U	D	803	-	18,18,18	2.22	4 (22%)	20,26,26	1.49	3 (15%)
2	HEM	D	801	1	50,50,50	1.55	10 (20%)	67,82,82	1.19	5 (7%)
5	GOL	C	804	-	5,5,5	0.46	0	5,5,5	0.45	0
5	GOL	A	804	-	5,5,5	0.34	0	5,5,5	0.43	0
5	GOL	B	804	-	5,5,5	0.43	0	5,5,5	0.46	0
3	H4B	B	802	-	17,18,18	0.89	0	14,26,26	1.87	4 (28%)
4	K7U	A	803	-	18,18,18	1.99	2 (11%)	20,26,26	1.40	4 (20%)
3	H4B	A	802	-	17,18,18	0.92	1 (5%)	14,26,26	1.71	4 (28%)
2	HEM	A	801	1	50,50,50	1.74	9 (18%)	67,82,82	1.33	9 (13%)
5	GOL	A	805	-	5,5,5	0.23	0	5,5,5	0.82	0
4	K7U	B	803	-	18,18,18	2.13	3 (16%)	20,26,26	1.18	2 (10%)
5	GOL	D	804	-	5,5,5	0.34	0	5,5,5	0.48	0
4	K7U	C	803	-	18,18,18	1.96	2 (11%)	20,26,26	1.37	3 (15%)
2	HEM	B	801	1	50,50,50	1.48	6 (12%)	67,82,82	1.27	6 (8%)
2	HEM	C	801	1	50,50,50	1.67	10 (20%)	67,82,82	1.16	5 (7%)
3	H4B	D	802	-	17,18,18	0.88	1 (5%)	14,26,26	1.86	4 (28%)
5	GOL	C	805	-	5,5,5	0.26	0	5,5,5	0.74	0
3	H4B	C	802	-	17,18,18	0.87	1 (5%)	14,26,26	1.65	3 (21%)

In the following table, the Chirals column lists the number of chiral outliers, the number of chiral centers analysed, the number of these observed in the model and the number defined in the Chemical Component Dictionary. Similar counts are reported in the Torsion and Rings columns. '-' means no outliers of that kind were identified.

Mol	Type	Chain	Res	Link	Chirals	Torsions	Rings
4	K7U	D	803	-	-	3/3/16/16	0/2/2/2
2	HEM	D	801	1	-	4/14/54/54	-
5	GOL	C	804	-	-	2/4/4/4	-
5	GOL	A	804	-	-	3/4/4/4	-
5	GOL	B	804	-	-	2/4/4/4	-
3	H4B	B	802	-	-	0/8/17/17	0/2/2/2
4	K7U	A	803	-	-	2/3/16/16	0/2/2/2
3	H4B	A	802	-	-	0/8/17/17	0/2/2/2
2	HEM	A	801	1	-	4/14/54/54	-
5	GOL	A	805	-	-	3/4/4/4	-
4	K7U	B	803	-	-	1/3/16/16	0/2/2/2
5	GOL	D	804	-	-	4/4/4/4	-
4	K7U	C	803	-	-	0/3/16/16	0/2/2/2

Continued on next page...

Continued from previous page...

Mol	Type	Chain	Res	Link	Chirals	Torsions	Rings
2	HEM	B	801	1	-	3/14/54/54	-
2	HEM	C	801	1	-	2/14/54/54	-
3	H4B	D	802	-	-	0/8/17/17	0/2/2/2
5	GOL	C	805	-	-	1/4/4/4	-
3	H4B	C	802	-	-	0/8/17/17	0/2/2/2

The worst 5 of 49 bond length outliers are listed below:

Mol	Chain	Res	Type	Atoms	Z	Observed(Å)	Ideal(Å)
4	D	803	K7U	C06-C08	-7.69	1.29	1.44
4	B	803	K7U	C06-C08	-7.65	1.29	1.44
4	A	803	K7U	C06-C08	-7.44	1.29	1.44
4	C	803	K7U	C06-C08	-7.32	1.30	1.44
2	A	801	HEM	FE-NC	6.73	2.17	1.95

The worst 5 of 52 bond angle outliers are listed below:

Mol	Chain	Res	Type	Atoms	Z	Observed(°)	Ideal(°)
4	D	803	K7U	C09-C10-N11	-4.28	105.14	114.08
3	A	802	H4B	C2-N1-C8A	3.88	120.20	113.36
3	C	802	H4B	C2-N1-C8A	3.71	119.91	113.36
3	D	802	H4B	C2-N1-C8A	3.68	119.85	113.36
3	D	802	H4B	O4-C4-C4A	-3.60	118.59	127.26

There are no chirality outliers.

5 of 34 torsion outliers are listed below:

Mol	Chain	Res	Type	Atoms
4	A	803	K7U	N01-C06-C08-C09
4	D	803	K7U	N01-C06-C08-C09
5	A	804	GOL	O1-C1-C2-C3
5	C	804	GOL	C1-C2-C3-O3
5	D	804	GOL	O1-C1-C2-C3

There are no ring outliers.

7 monomers are involved in 17 short contacts:

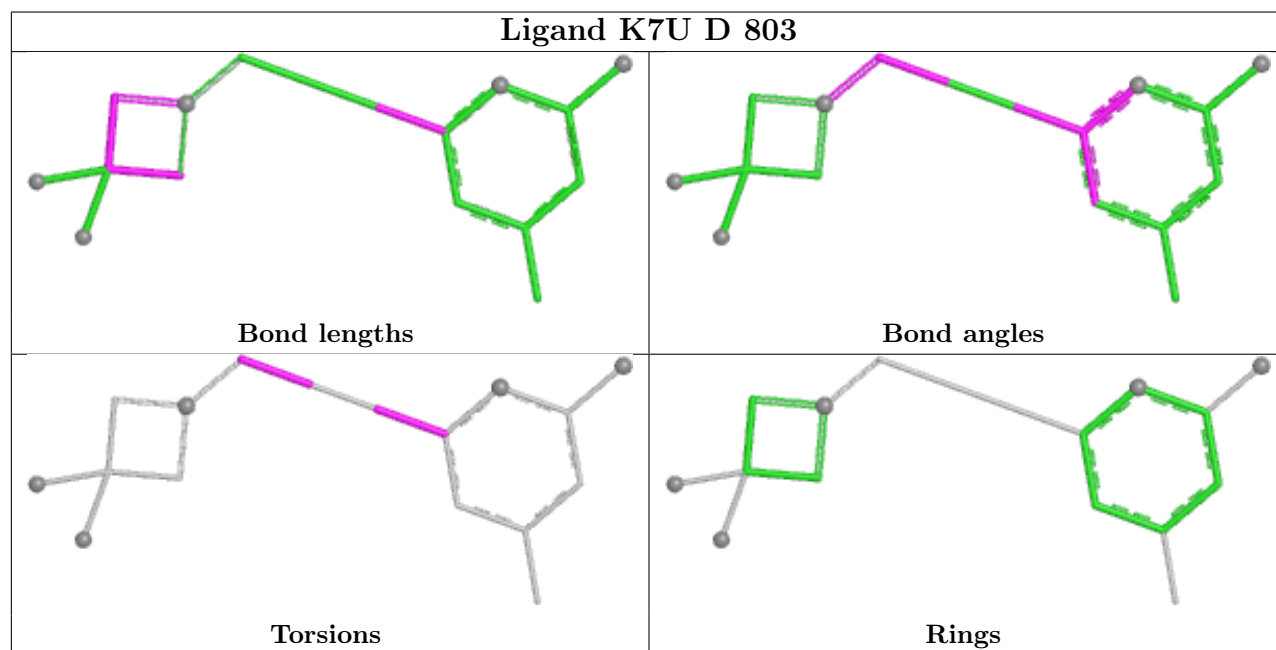
Mol	Chain	Res	Type	Clashes	Symm-Clashes
4	D	803	K7U	1	0
2	D	801	HEM	3	0

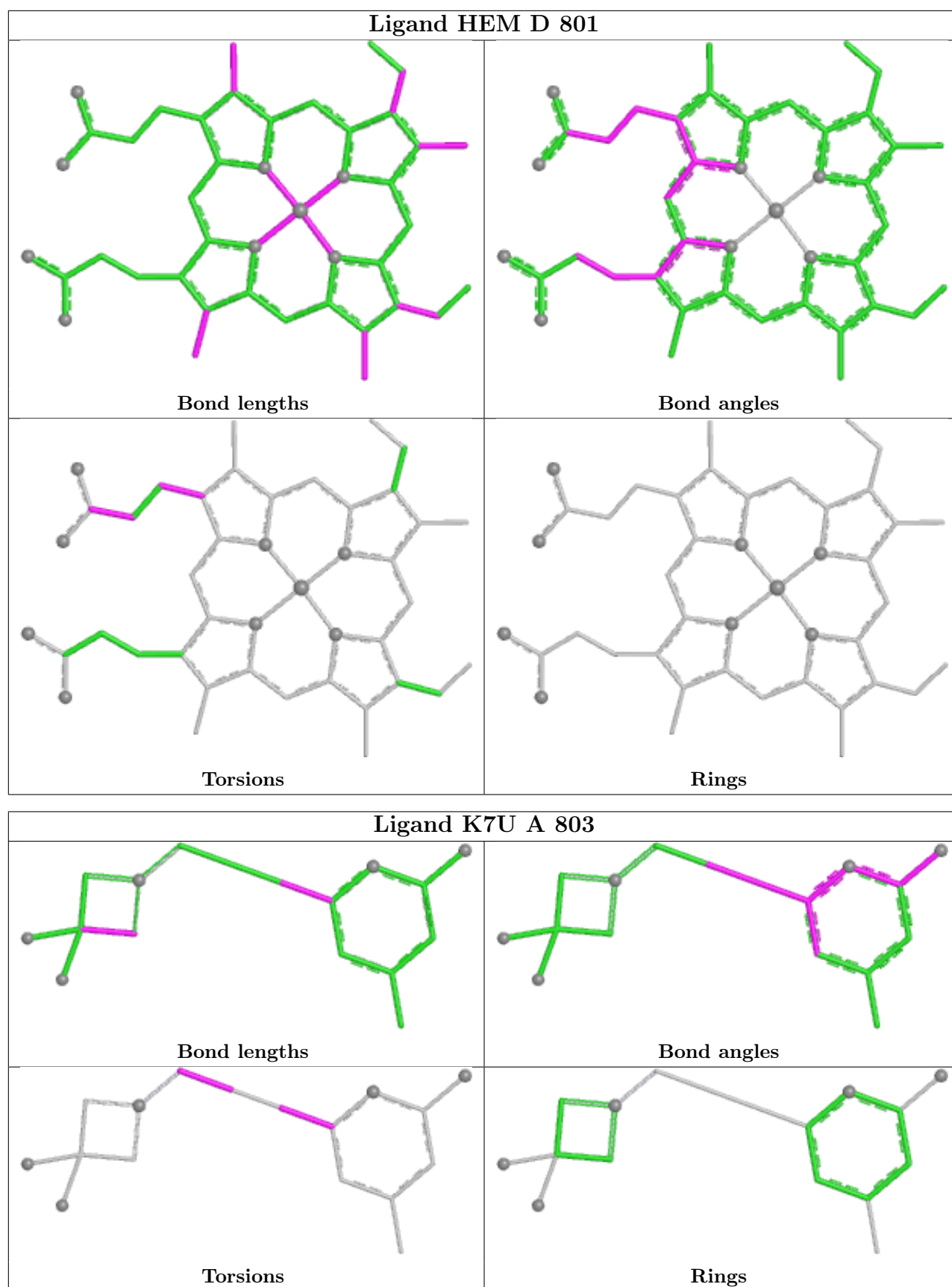
Continued on next page...

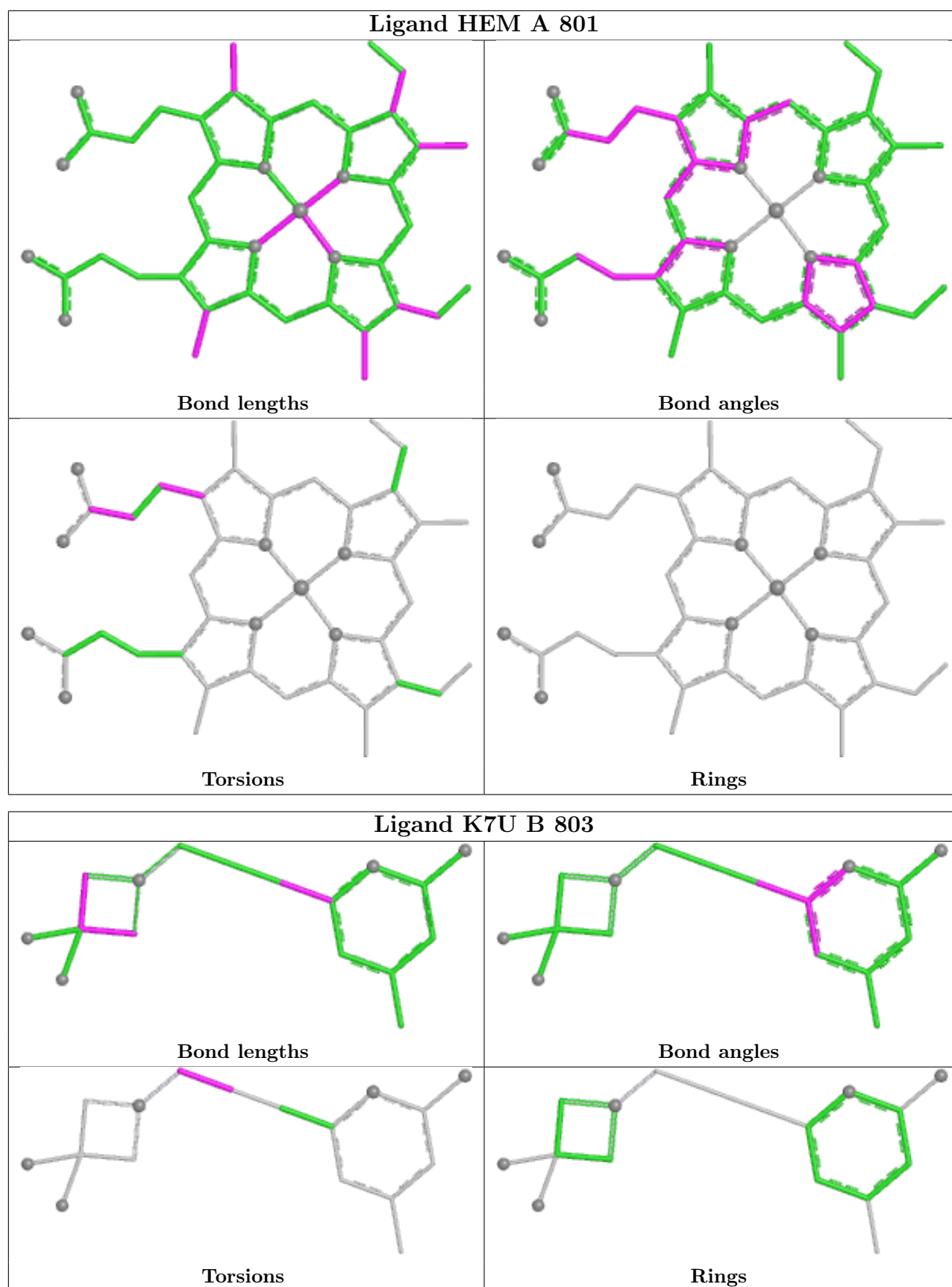
Continued from previous page...

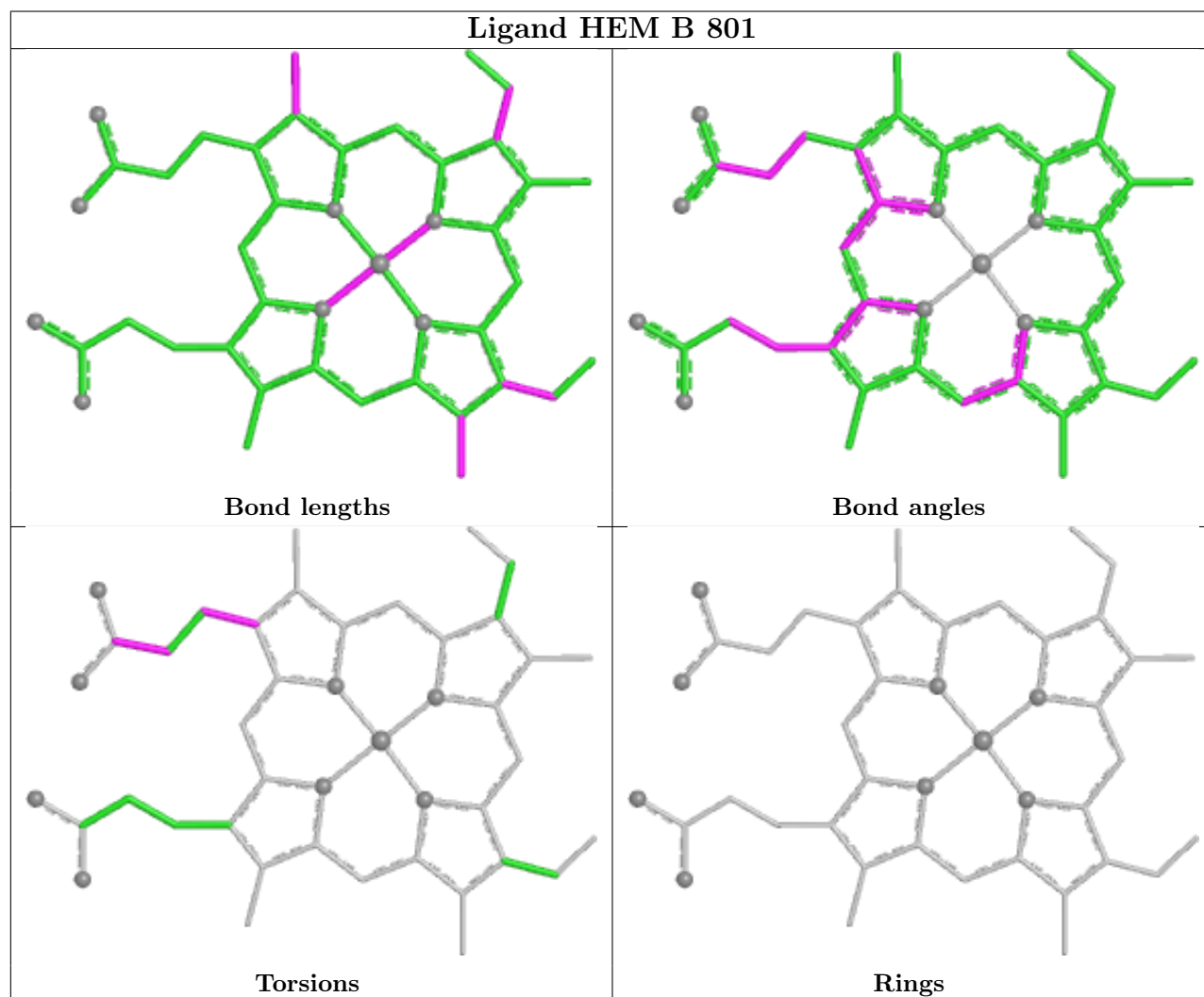
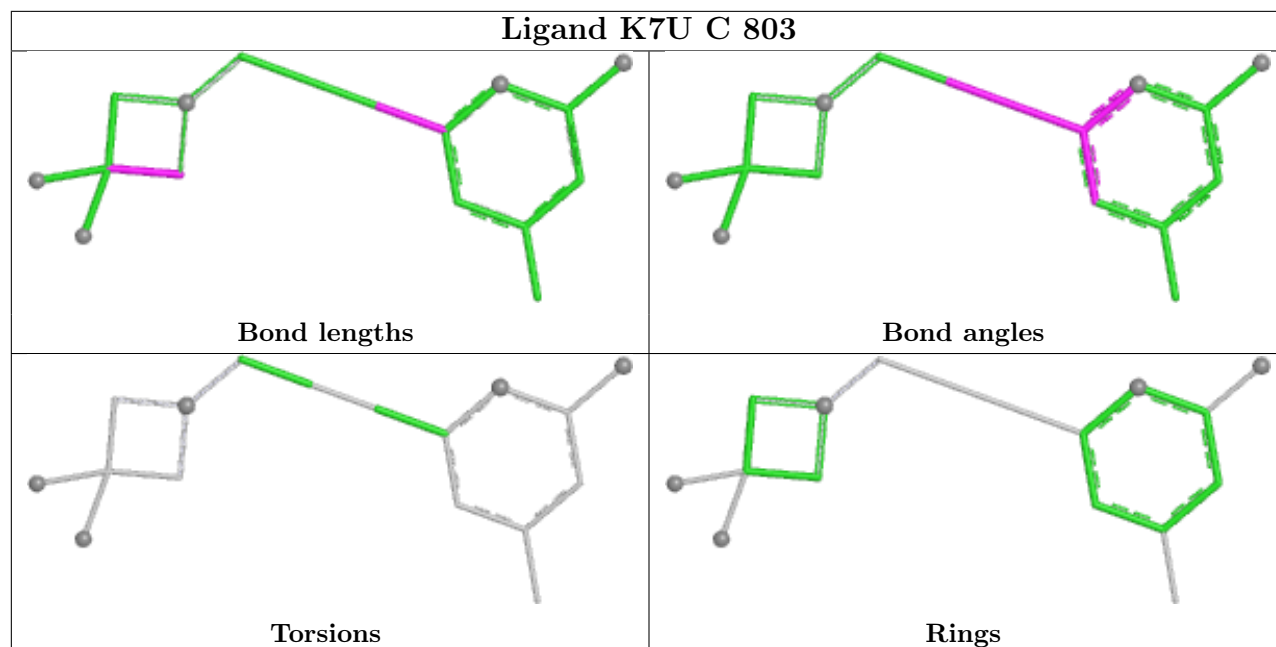
Mol	Chain	Res	Type	Clashes	Symm-Clashes
5	C	804	GOL	1	0
2	A	801	HEM	4	0
2	B	801	HEM	4	0
2	C	801	HEM	3	0
5	C	805	GOL	1	0

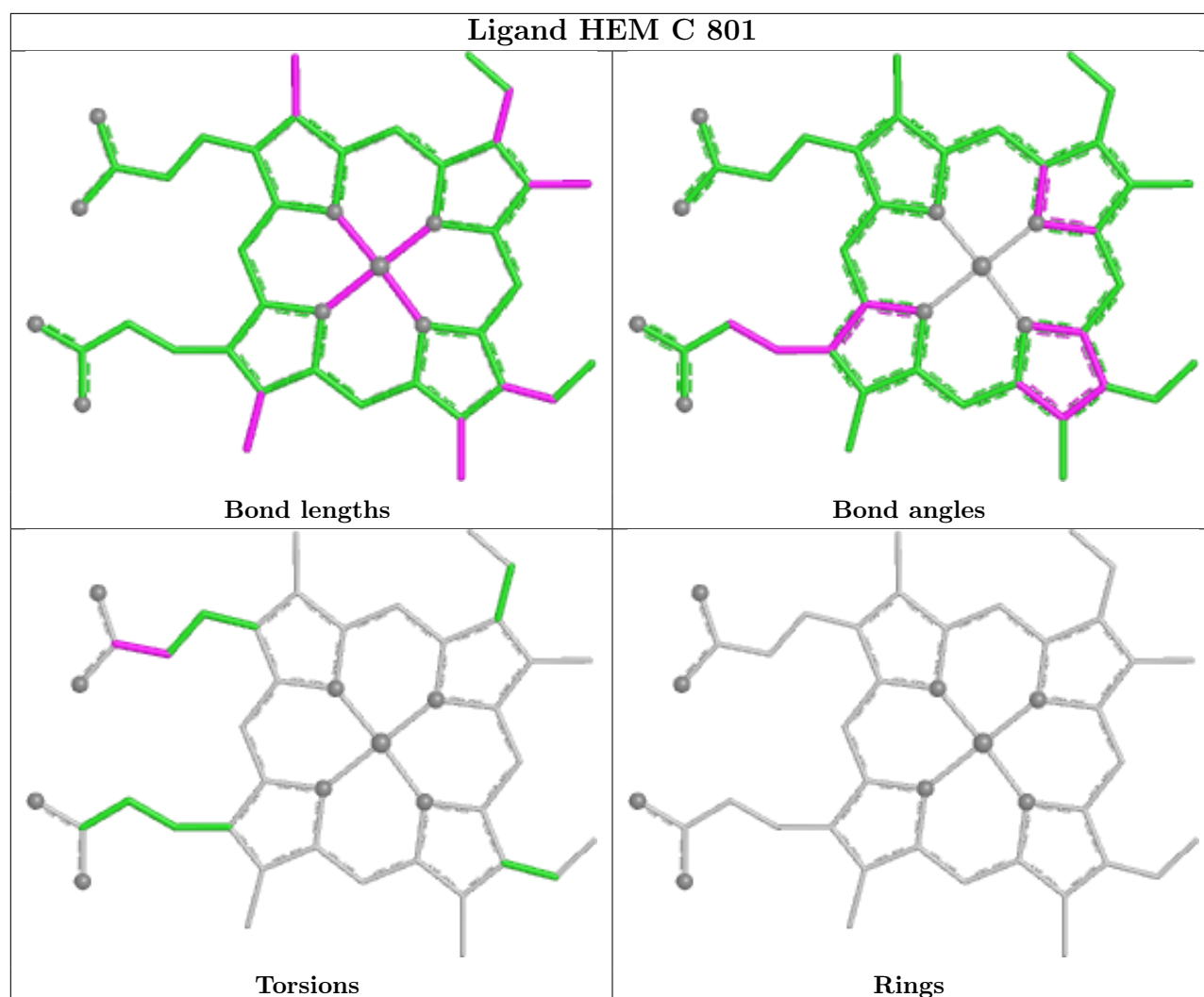
The following is a two-dimensional graphical depiction of Mogul quality analysis of bond lengths, bond angles, torsion angles, and ring geometry for all instances of the Ligand of Interest. In addition, ligands with molecular weight > 250 and outliers as shown on the validation Tables will also be included. For torsion angles, if less than 5% of the Mogul distribution of torsion angles is within 10 degrees of the torsion angle in question, then that torsion angle is considered an outlier. Any bond that is central to one or more torsion angles identified as an outlier by Mogul will be highlighted in the graph. For rings, the root-mean-square deviation (RMSD) between the ring in question and similar rings identified by Mogul is calculated over all ring torsion angles. If the average RMSD is greater than 60 degrees and the minimal RMSD between the ring in question and any Mogul-identified rings is also greater than 60 degrees, then that ring is considered an outlier. The outliers are highlighted in purple. The color gray indicates Mogul did not find sufficient equivalents in the CSD to analyse the geometry.











5.7 Other polymers [i](#)

There are no such residues in this entry.

5.8 Polymer linkage issues [i](#)

There are no chain breaks in this entry.

6 Fit of model and data [i](#)

6.1 Protein, DNA and RNA chains [i](#)

In the following table, the column labelled ‘#RSRZ > 2’ contains the number (and percentage) of RSRZ outliers, followed by percent RSRZ outliers for the chain as percentile scores relative to all X-ray entries and entries of similar resolution. The OWAB column contains the minimum, median, 95th percentile and maximum values of the occupancy-weighted average B-factor per residue. The column labelled ‘Q < 0.9’ lists the number of (and percentage) of residues with an average occupancy less than 0.9.

Mol	Chain	Analysed	<RSRZ>	#RSRZ>2	OWAB(Å ²)	Q<0.9
1	A	420/423 (99%)	-1.39	0 100 100	17, 40, 79, 133	5 (1%)
1	B	413/423 (97%)	-1.50	0 100 100	15, 34, 63, 95	2 (0%)
1	C	418/423 (98%)	-1.39	0 100 100	18, 41, 78, 123	3 (0%)
1	D	411/423 (97%)	-1.49	0 100 100	16, 34, 62, 99	2 (0%)
All	All	1662/1692 (98%)	-1.44	0 100 100	15, 37, 73, 133	12 (0%)

There are no RSRZ outliers to report.

6.2 Non-standard residues in protein, DNA, RNA chains [i](#)

There are no non-standard protein/DNA/RNA residues in this entry.

6.3 Carbohydrates [i](#)

There are no oligosaccharides in this entry.

6.4 Ligands [i](#)

In the following table, the Atoms column lists the number of modelled atoms in the group and the number defined in the chemical component dictionary. The B-factors column lists the minimum, median, 95th percentile and maximum values of B factors of atoms in the group. The column labelled ‘Q < 0.9’ lists the number of atoms with occupancy less than 0.9.

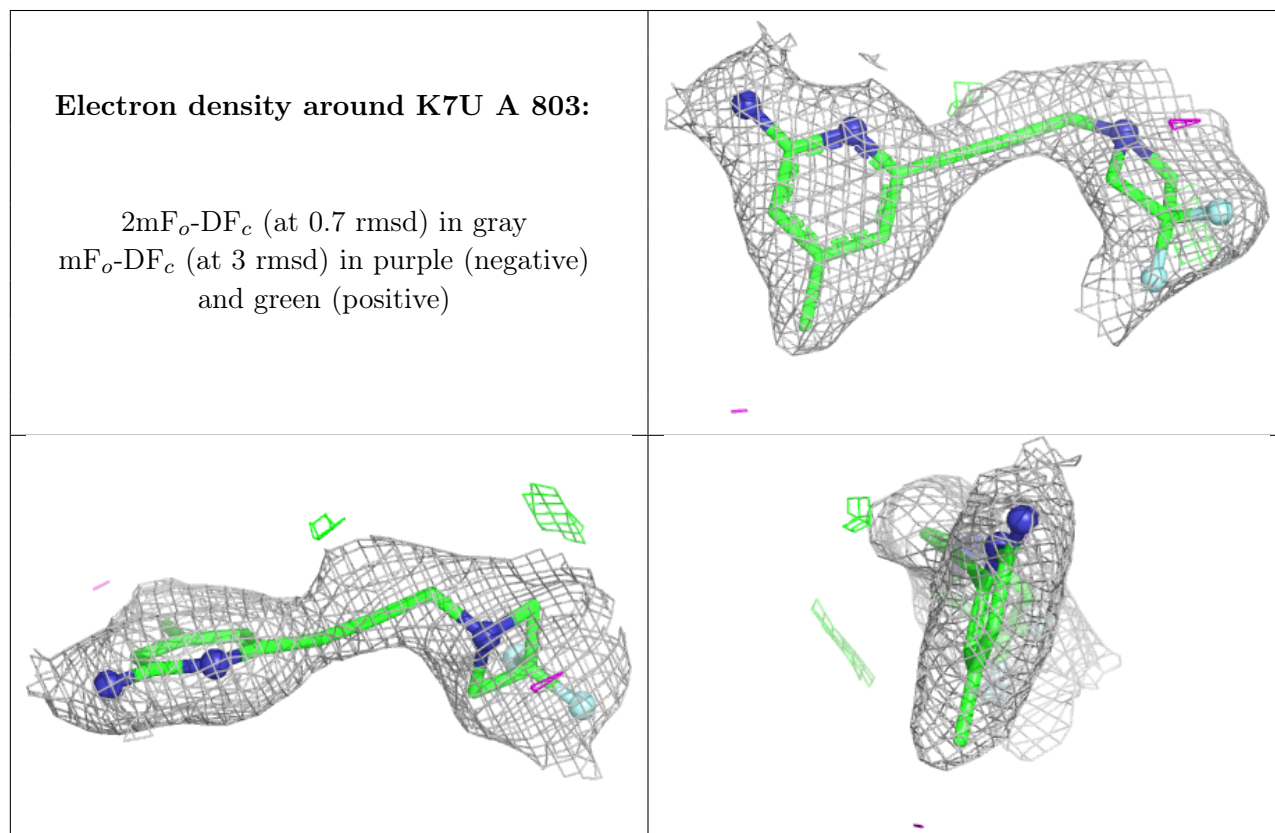
Mol	Type	Chain	Res	Atoms	RSCC	RSR	B-factors(Å ²)	Q<0.9
5	GOL	B	804	6/6	0.97	0.06	49,55,59,60	0
3	H4B	C	802	17/17	0.99	0.02	30,36,40,42	0
3	H4B	D	802	17/17	0.99	0.02	24,30,34,36	0
4	K7U	A	803	17/17	0.99	0.04	15,34,66,67	0

Continued on next page...

Continued from previous page...

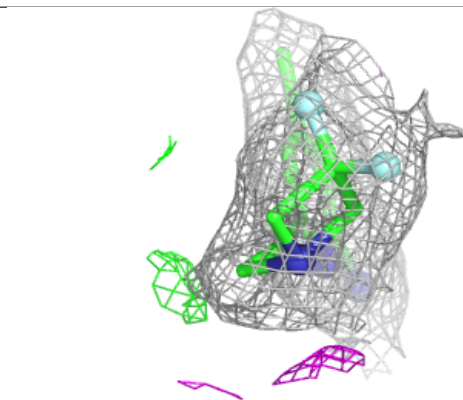
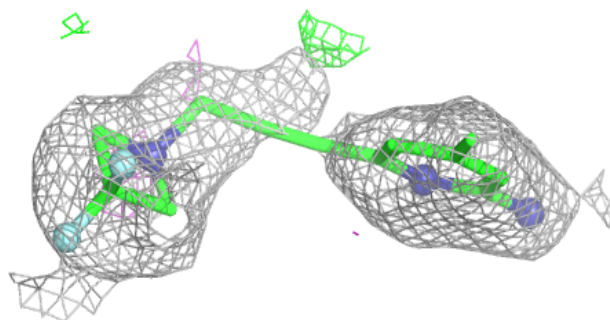
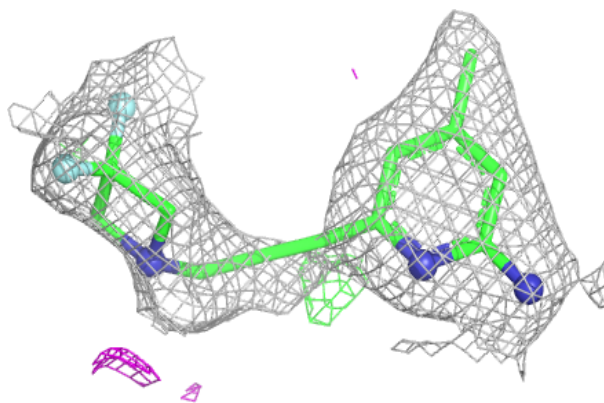
Mol	Type	Chain	Res	Atoms	RSCC	RSR	B-factors(Å ²)	Q<0.9
4	K7U	B	803	17/17	0.99	0.04	25,42,72,75	0
4	K7U	C	803	17/17	0.99	0.04	23,40,69,73	0
4	K7U	D	803	17/17	0.99	0.06	25,41,86,94	0
5	GOL	A	804	6/6	0.99	0.04	52,60,66,68	0
5	GOL	A	805	6/6	0.99	0.06	38,45,55,55	0
3	H4B	A	802	17/17	0.99	0.02	20,30,36,36	0
5	GOL	C	804	6/6	0.99	0.06	72,78,79,79	0
5	GOL	C	805	6/6	0.99	0.04	35,47,50,55	0
5	GOL	D	804	6/6	0.99	0.05	56,62,63,63	0
2	HEM	D	801	43/43	1.00	0.02	16,28,40,48	0
2	HEM	A	801	43/43	1.00	0.02	19,28,37,57	0
3	H4B	B	802	17/17	1.00	0.02	28,35,41,42	0
2	HEM	B	801	43/43	1.00	0.02	15,25,41,44	0
2	HEM	C	801	43/43	1.00	0.02	20,30,41,53	0
6	ZN	A	806	1/1	1.00	0.01	34,34,34,34	0
6	ZN	C	806	1/1	1.00	0.01	33,33,33,33	0

The following is a graphical depiction of the model fit to experimental electron density of all instances of the Ligand of Interest. In addition, ligands with molecular weight > 250 and outliers as shown on the geometry validation Tables will also be included. Each fit is shown from different orientation to approximate a three-dimensional view.

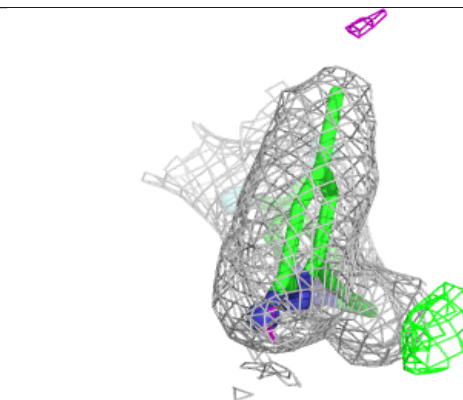
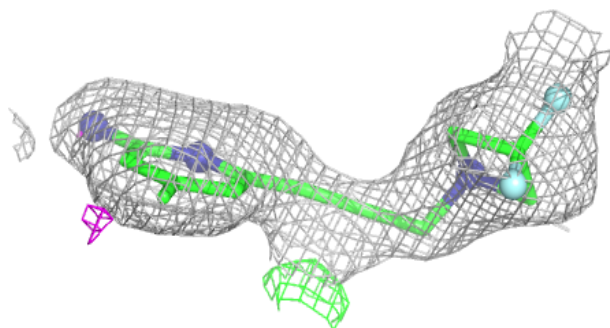
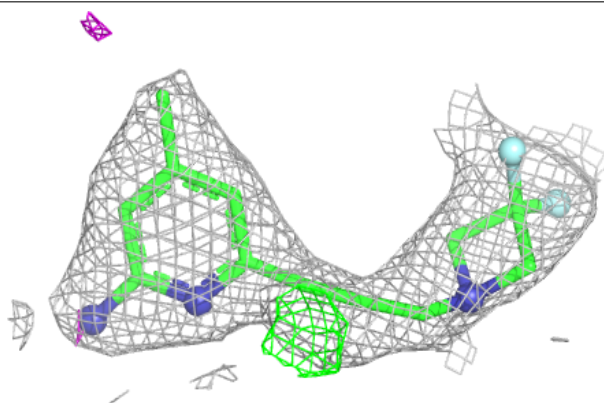


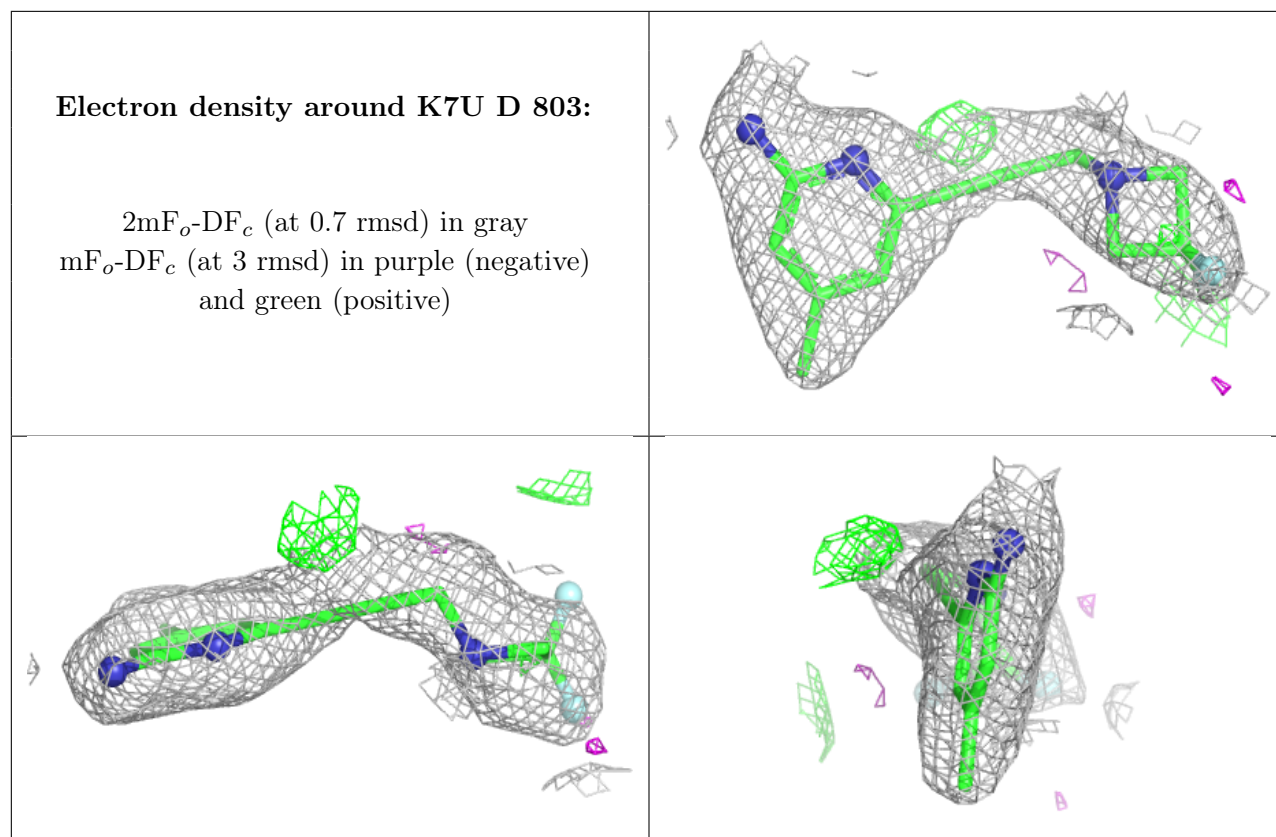
Electron density around K7U B 803:

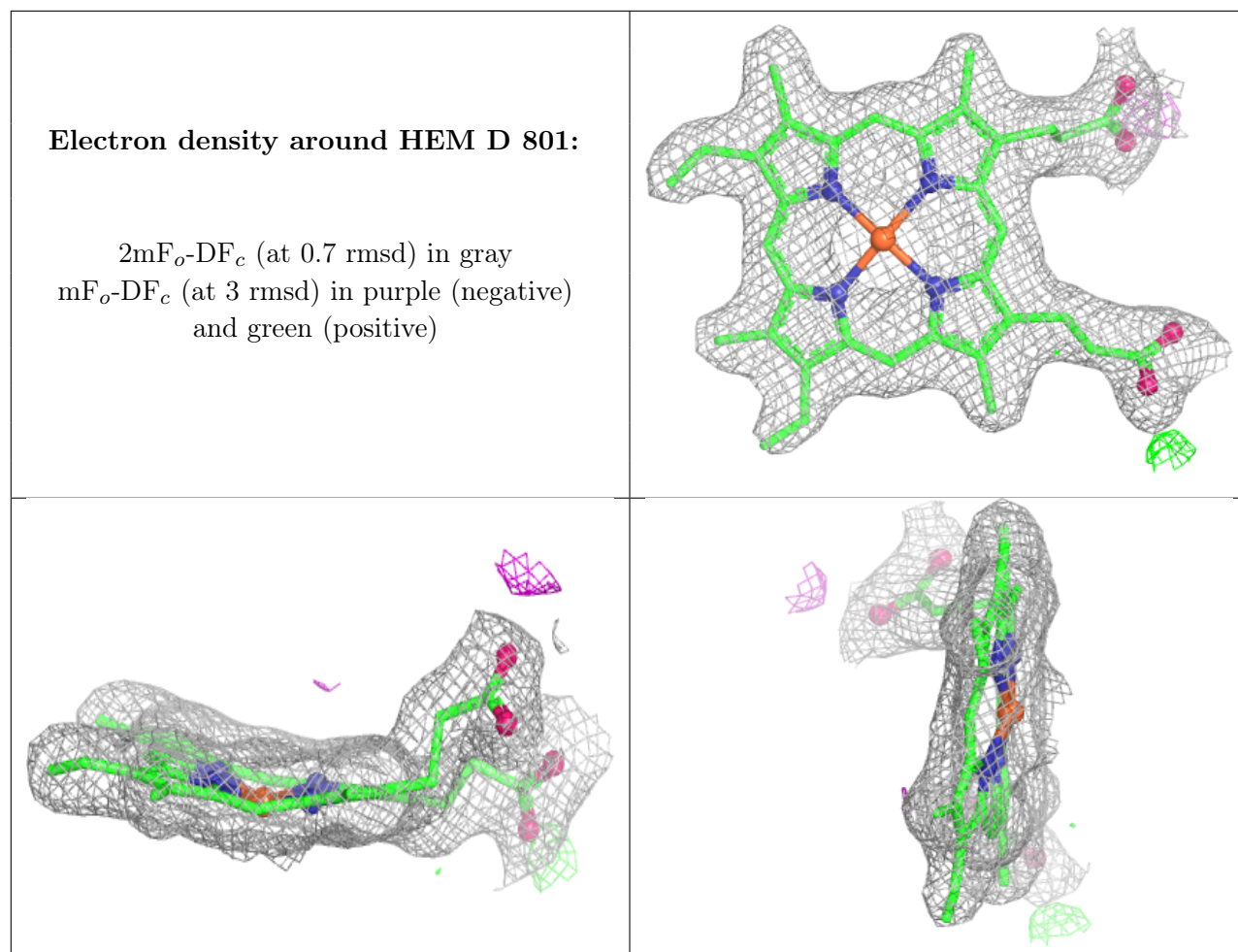
$2mF_o-DF_c$ (at 0.7 rnsd) in gray
 mF_o-DF_c (at 3 rnsd) in purple (negative)
and green (positive)

**Electron density around K7U C 803:**

$2mF_o-DF_c$ (at 0.7 rnsd) in gray
 mF_o-DF_c (at 3 rnsd) in purple (negative)
and green (positive)

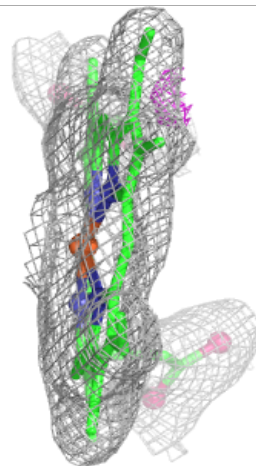
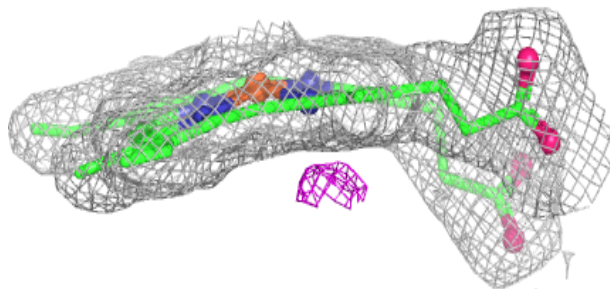
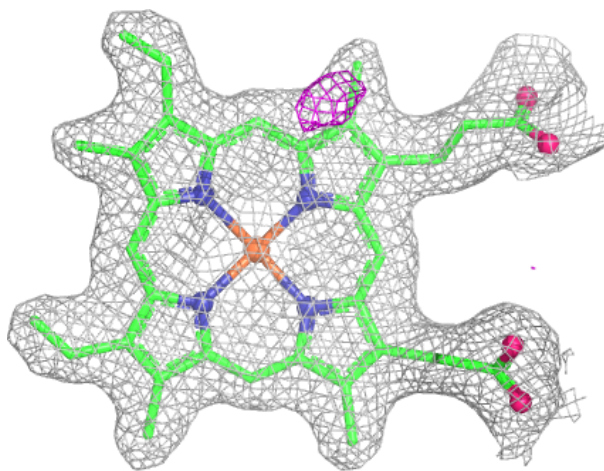






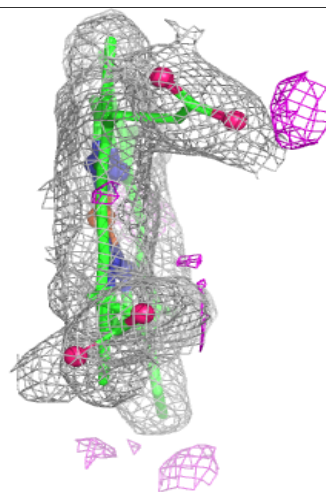
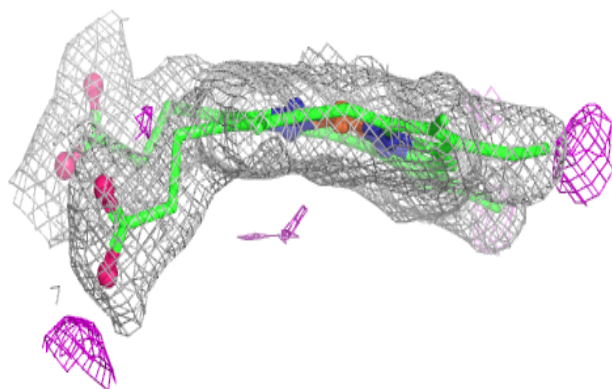
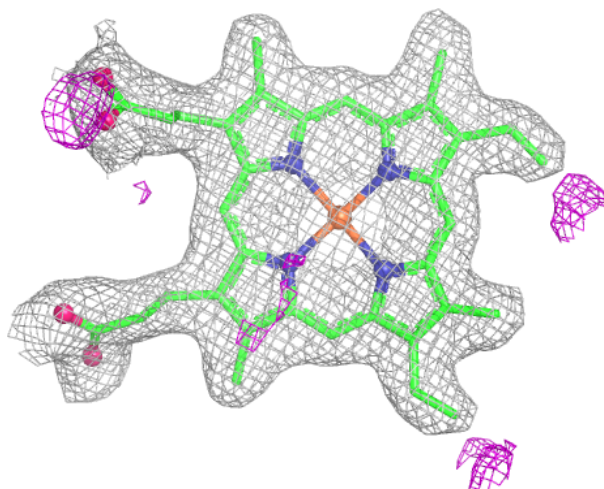
Electron density around HEM A 801:

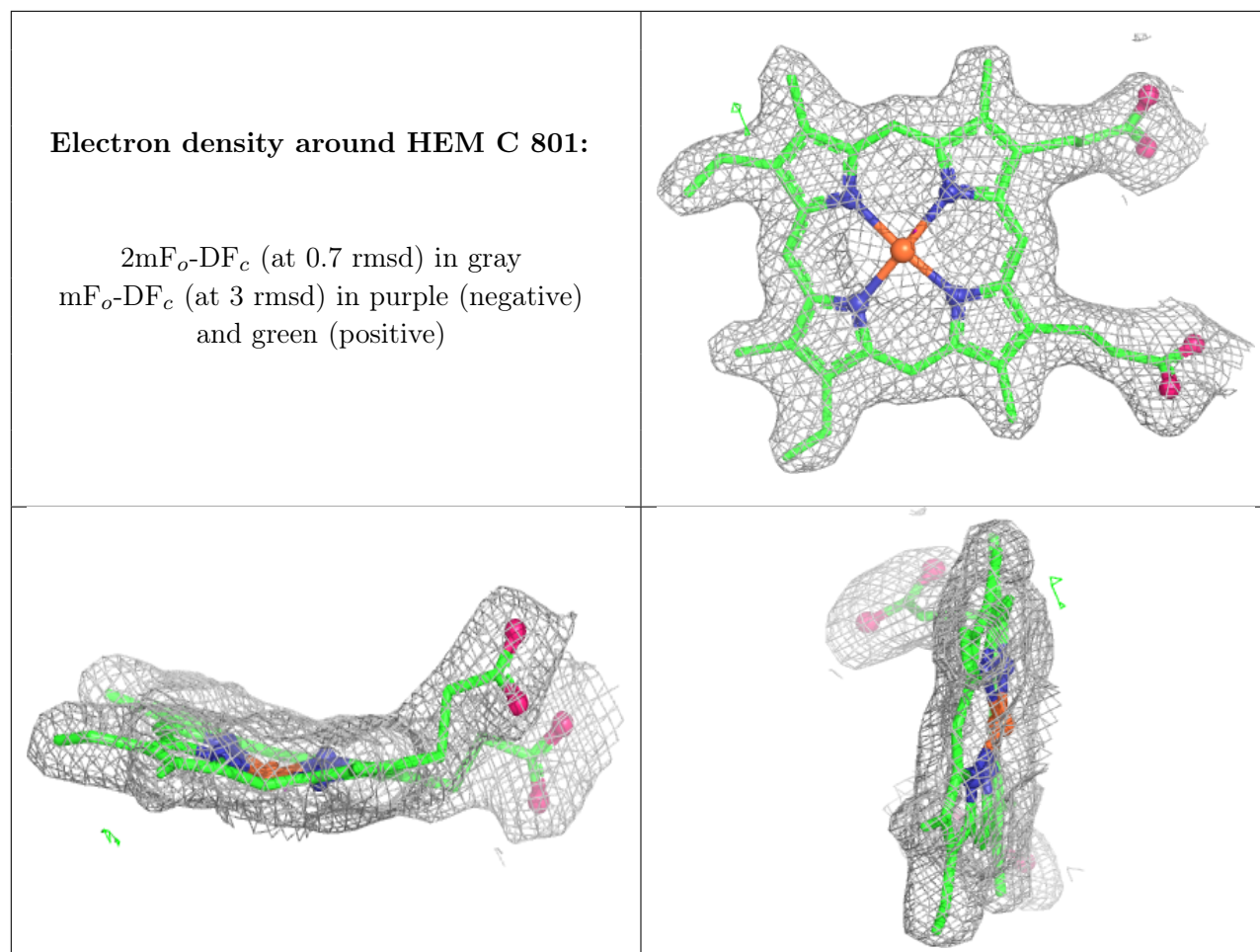
$2mF_o-DF_c$ (at 0.7 rmsd) in gray
 mF_o-DF_c (at 3 rmsd) in purple (negative)
and green (positive)



Electron density around HEM B 801:

$2mF_o-DF_c$ (at 0.7 rmsd) in gray
 mF_o-DF_c (at 3 rmsd) in purple (negative)
and green (positive)





6.5 Other polymers [i](#)

There are no such residues in this entry.