



Full wwPDB X-ray Structure Validation Report ⓘ

Mar 8, 2026 – 02:26 PM UTC

PDB ID : 4TYP / pdb_00004typ
Title : Crystal structure of an adenylate kinase mutant–AKm1
Authors : Moon, S.; Bae, E.
Deposited on : 2014-07-09
Resolution : 2.90 Å(reported)

This is a Full wwPDB X-ray Structure Validation Report for a publicly released PDB entry.

We welcome your comments at validation@mail.wwpdb.org

A user guide is available at

<https://www.wwpdb.org/validation/2017/XrayValidationReportHelp>

with specific help available everywhere you see the ⓘ symbol.

The types of validation reports are described at

<http://www.wwpdb.org/validation/2017/FAQs#types>.

The following versions of software and data (see [references ⓘ](#)) were used in the production of this report:

MolProbity : 4-5-2 with Phenix2.0
Mogul : 2022.3.0, CSD as543be (2022)
Xtriage (Phenix) : 2.0
EDS : 3.0
Buster-report : wwPDB partial adaption of 1.1.7 (2018)
Percentile statistics : 20250101.v01 (using entries in the PDB archive January 1st 2025)
CCP4 : 9.0.010 (Gargrove)
Density-Fitness : 1.0.12
Ideal geometry (proteins) : Engh & Huber (2001)
Ideal geometry (DNA, RNA) : Parkinson et al. (1996)
Validation Pipeline (wwPDB-VP) : 2.49

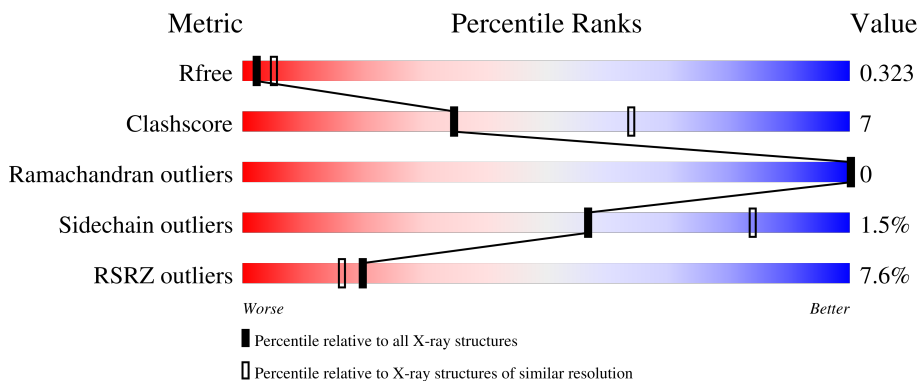
1 Overall quality at a glance

The following experimental techniques were used to determine the structure:

X-RAY DIFFRACTION

The reported resolution of this entry is 2.90 Å.

Percentile scores (ranging between 0-100) for global validation metrics of the entry are shown in the following graphic. The table shows the number of entries on which the scores are based.



Metric	Whole archive (#Entries)	Similar resolution (#Entries, resolution range(Å))
R_{free}	180053	2481 (2.90-2.90)
Clashscore	190562	2690 (2.90-2.90)
Ramachandran outliers	187476	2623 (2.90-2.90)
Sidechain outliers	187428	2625 (2.90-2.90)
RSRZ outliers	180081	2481 (2.90-2.90)

The table below summarises the geometric issues observed across the polymeric chains and their fit to the electron density. The red, orange, yellow and green segments of the lower bar indicate the fraction of residues that contain outliers for ≥ 3 , 2, 1 and 0 types of geometric quality criteria respectively. A grey segment represents the fraction of residues that are not modelled. The numeric value for each fraction is indicated below the corresponding segment, with a dot representing fractions $\leq 5\%$. The upper red bar (where present) indicates the fraction of residues that have poor fit to the electron density. The numeric value is given above the bar.

Mol	Chain	Length	Quality of chain
1	A	217	 11% 83% 10% . .
1	B	217	 4% 86% 8% . 5%
1	C	217	 6% 80% 7% 12%
1	D	217	 6% 76% 8% . 14%

The following table lists non-polymeric compounds, carbohydrate monomers and non-standard

residues in protein, DNA, RNA chains that are outliers for geometric or electron-density-fit criteria:

Mol	Type	Chain	Res	Chirality	Geometry	Clashes	Electron density
3	ZN	A	301	-	-	X	-

2 Entry composition i

There are 4 unique types of molecules in this entry. The entry contains 6504 atoms, of which 0 are hydrogens and 0 are deuteriums.

In the tables below, the ZeroOcc column contains the number of atoms modelled with zero occupancy, the AltConf column contains the number of residues with at least one atom in alternate conformation and the Trace column contains the number of residues modelled with at most 2 atoms.

- Molecule 1 is a protein called Adenylate kinase.

Mol	Chain	Residues	Atoms					ZeroOcc	AltConf	Trace
			Total	C	N	O	S			
1	C	190	1516	958	263	286	9	0	0	0
1	B	206	1620	1018	280	310	12	0	0	0
1	A	208	1640	1029	286	313	12	0	0	0
1	D	186	1485	938	260	278	9	0	0	0

There are 164 discrepancies between the modelled and reference sequences:

Chain	Residue	Modelled	Actual	Comment	Reference
C	3	ILE	LEU	engineered mutation	UNP P16304
C	17	ALA	GLY	engineered mutation	UNP P16304
C	19	LYS	ARG	engineered mutation	UNP P16304
C	22	ALA	GLU	engineered mutation	UNP P16304
C	23	LYS	ASP	engineered mutation	UNP P16304
C	69	ARG	LYS	engineered mutation	UNP P16304
C	73	SER	GLY	engineered mutation	UNP P16304
C	75	SER	ASP	engineered mutation	UNP P16304
C	103	MET	TYR	engineered mutation	UNP P16304
C	105	ARG	LYS	engineered mutation	UNP P16304
C	106	LYS	PRO	engineered mutation	UNP P16304
C	107	LEU	ILE	engineered mutation	UNP P16304
C	108	GLU	ASP	engineered mutation	UNP P16304
C	109	HIS	TYR	engineered mutation	UNP P16304
C	112	HIS	ASN	engineered mutation	UNP P16304
C	114	ASP	GLU	engineered mutation	UNP P16304
C	116	ARG	ASP	engineered mutation	UNP P16304
C	117	GLN	LYS	engineered mutation	UNP P16304
C	118	GLU	ASP	engineered mutation	UNP P16304
C	119	GLU	VAL	engineered mutation	UNP P16304
C	169	ALA	SER	engineered mutation	UNP P16304

Continued on next page...

Continued from previous page...

Chain	Residue	Modelled	Actual	Comment	Reference
C	179	MET	THR	engineered mutation	UNP P16304
C	180	LYS	GLN	engineered mutation	UNP P16304
C	184	ALA	ASP	engineered mutation	UNP P16304
C	187	ASP	SER	engineered mutation	UNP P16304
C	188	SER	GLU	engineered mutation	UNP P16304
C	190	GLU	GLY	engineered mutation	UNP P16304
C	191	VAL	TYR	engineered mutation	UNP P16304
C	193	ARG	ALA	engineered mutation	UNP P16304
C	198	GLU	GLN	engineered mutation	UNP P16304
C	201	MET	ILE	engineered mutation	UNP P16304
C	202	GLU	GLN	engineered mutation	UNP P16304
C	203	LYS	ASP	engineered mutation	UNP P16304
C	205	PHE	TYR	engineered mutation	UNP P16304
C	206	LYS	ALA	engineered mutation	UNP P16304
C	208	LEU	VAL	engineered mutation	UNP P16304
C	209	ARG	LYS	engineered mutation	UNP P16304
C	210	GLU	ASP	engineered mutation	UNP P16304
C	213	GLN	GLY	engineered mutation	UNP P16304
C	216	ALA	LYS	engineered mutation	UNP P16304
C	217	ARG	LYS	engineered mutation	UNP P16304
B	3	ILE	LEU	engineered mutation	UNP P16304
B	17	ALA	GLY	engineered mutation	UNP P16304
B	19	LYS	ARG	engineered mutation	UNP P16304
B	22	ALA	GLU	engineered mutation	UNP P16304
B	23	LYS	ASP	engineered mutation	UNP P16304
B	69	ARG	LYS	engineered mutation	UNP P16304
B	73	SER	GLY	engineered mutation	UNP P16304
B	75	SER	ASP	engineered mutation	UNP P16304
B	103	MET	TYR	engineered mutation	UNP P16304
B	105	ARG	LYS	engineered mutation	UNP P16304
B	106	LYS	PRO	engineered mutation	UNP P16304
B	107	LEU	ILE	engineered mutation	UNP P16304
B	108	GLU	ASP	engineered mutation	UNP P16304
B	109	HIS	TYR	engineered mutation	UNP P16304
B	112	HIS	ASN	engineered mutation	UNP P16304
B	114	ASP	GLU	engineered mutation	UNP P16304
B	116	ARG	ASP	engineered mutation	UNP P16304
B	117	GLN	LYS	engineered mutation	UNP P16304
B	118	GLU	ASP	engineered mutation	UNP P16304
B	119	GLU	VAL	engineered mutation	UNP P16304
B	169	ALA	SER	engineered mutation	UNP P16304
B	179	MET	THR	engineered mutation	UNP P16304

Continued on next page...

Continued from previous page...

Chain	Residue	Modelled	Actual	Comment	Reference
B	180	LYS	GLN	engineered mutation	UNP P16304
B	184	ALA	ASP	engineered mutation	UNP P16304
B	187	ASP	SER	engineered mutation	UNP P16304
B	188	SER	GLU	engineered mutation	UNP P16304
B	190	GLU	GLY	engineered mutation	UNP P16304
B	191	VAL	TYR	engineered mutation	UNP P16304
B	193	ARG	ALA	engineered mutation	UNP P16304
B	198	GLU	GLN	engineered mutation	UNP P16304
B	201	MET	ILE	engineered mutation	UNP P16304
B	202	GLU	GLN	engineered mutation	UNP P16304
B	203	LYS	ASP	engineered mutation	UNP P16304
B	205	PHE	TYR	engineered mutation	UNP P16304
B	206	LYS	ALA	engineered mutation	UNP P16304
B	208	LEU	VAL	engineered mutation	UNP P16304
B	209	ARG	LYS	engineered mutation	UNP P16304
B	210	GLU	ASP	engineered mutation	UNP P16304
B	213	GLN	GLY	engineered mutation	UNP P16304
B	216	ALA	LYS	engineered mutation	UNP P16304
B	217	ARG	LYS	engineered mutation	UNP P16304
A	3	ILE	LEU	engineered mutation	UNP P16304
A	17	ALA	GLY	engineered mutation	UNP P16304
A	19	LYS	ARG	engineered mutation	UNP P16304
A	22	ALA	GLU	engineered mutation	UNP P16304
A	23	LYS	ASP	engineered mutation	UNP P16304
A	69	ARG	LYS	engineered mutation	UNP P16304
A	73	SER	GLY	engineered mutation	UNP P16304
A	75	SER	ASP	engineered mutation	UNP P16304
A	103	MET	TYR	engineered mutation	UNP P16304
A	105	ARG	LYS	engineered mutation	UNP P16304
A	106	LYS	PRO	engineered mutation	UNP P16304
A	107	LEU	ILE	engineered mutation	UNP P16304
A	108	GLU	ASP	engineered mutation	UNP P16304
A	109	HIS	TYR	engineered mutation	UNP P16304
A	112	HIS	ASN	engineered mutation	UNP P16304
A	114	ASP	GLU	engineered mutation	UNP P16304
A	116	ARG	ASP	engineered mutation	UNP P16304
A	117	GLN	LYS	engineered mutation	UNP P16304
A	118	GLU	ASP	engineered mutation	UNP P16304
A	119	GLU	VAL	engineered mutation	UNP P16304
A	169	ALA	SER	engineered mutation	UNP P16304
A	179	MET	THR	engineered mutation	UNP P16304
A	180	LYS	GLN	engineered mutation	UNP P16304

Continued on next page...

Continued from previous page...

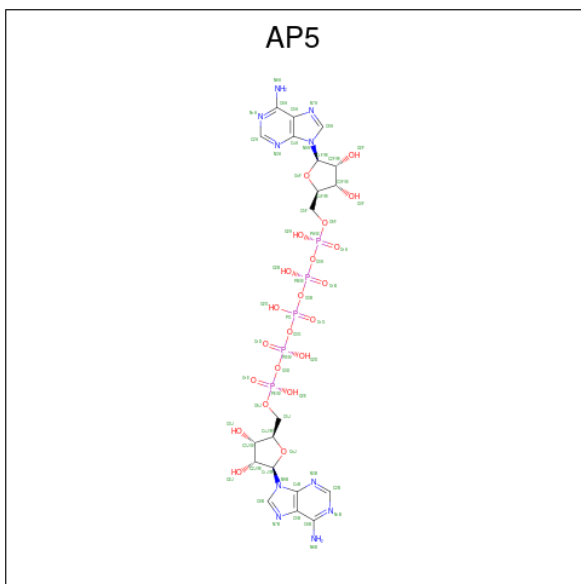
Chain	Residue	Modelled	Actual	Comment	Reference
A	184	ALA	ASP	engineered mutation	UNP P16304
A	187	ASP	SER	engineered mutation	UNP P16304
A	188	SER	GLU	engineered mutation	UNP P16304
A	190	GLU	GLY	engineered mutation	UNP P16304
A	191	VAL	TYR	engineered mutation	UNP P16304
A	193	ARG	ALA	engineered mutation	UNP P16304
A	198	GLU	GLN	engineered mutation	UNP P16304
A	201	MET	ILE	engineered mutation	UNP P16304
A	202	GLU	GLN	engineered mutation	UNP P16304
A	203	LYS	ASP	engineered mutation	UNP P16304
A	205	PHE	TYR	engineered mutation	UNP P16304
A	206	LYS	ALA	engineered mutation	UNP P16304
A	208	LEU	VAL	engineered mutation	UNP P16304
A	209	ARG	LYS	engineered mutation	UNP P16304
A	210	GLU	ASP	engineered mutation	UNP P16304
A	213	GLN	GLY	engineered mutation	UNP P16304
A	216	ALA	LYS	engineered mutation	UNP P16304
A	217	ARG	LYS	engineered mutation	UNP P16304
D	3	ILE	LEU	engineered mutation	UNP P16304
D	17	ALA	GLY	engineered mutation	UNP P16304
D	19	LYS	ARG	engineered mutation	UNP P16304
D	22	ALA	GLU	engineered mutation	UNP P16304
D	23	LYS	ASP	engineered mutation	UNP P16304
D	69	ARG	LYS	engineered mutation	UNP P16304
D	73	SER	GLY	engineered mutation	UNP P16304
D	75	SER	ASP	engineered mutation	UNP P16304
D	103	MET	TYR	engineered mutation	UNP P16304
D	105	ARG	LYS	engineered mutation	UNP P16304
D	106	LYS	PRO	engineered mutation	UNP P16304
D	107	LEU	ILE	engineered mutation	UNP P16304
D	108	GLU	ASP	engineered mutation	UNP P16304
D	109	HIS	TYR	engineered mutation	UNP P16304
D	112	HIS	ASN	engineered mutation	UNP P16304
D	114	ASP	GLU	engineered mutation	UNP P16304
D	116	ARG	ASP	engineered mutation	UNP P16304
D	117	GLN	LYS	engineered mutation	UNP P16304
D	118	GLU	ASP	engineered mutation	UNP P16304
D	119	GLU	VAL	engineered mutation	UNP P16304
D	169	ALA	SER	engineered mutation	UNP P16304
D	179	MET	THR	engineered mutation	UNP P16304
D	180	LYS	GLN	engineered mutation	UNP P16304
D	184	ALA	ASP	engineered mutation	UNP P16304

Continued on next page...

Continued from previous page...

Chain	Residue	Modelled	Actual	Comment	Reference
D	187	ASP	SER	engineered mutation	UNP P16304
D	188	SER	GLU	engineered mutation	UNP P16304
D	190	GLU	GLY	engineered mutation	UNP P16304
D	191	VAL	TYR	engineered mutation	UNP P16304
D	193	ARG	ALA	engineered mutation	UNP P16304
D	198	GLU	GLN	engineered mutation	UNP P16304
D	201	MET	ILE	engineered mutation	UNP P16304
D	202	GLU	GLN	engineered mutation	UNP P16304
D	203	LYS	ASP	engineered mutation	UNP P16304
D	205	PHE	TYR	engineered mutation	UNP P16304
D	206	LYS	ALA	engineered mutation	UNP P16304
D	208	LEU	VAL	engineered mutation	UNP P16304
D	209	ARG	LYS	engineered mutation	UNP P16304
D	210	GLU	ASP	engineered mutation	UNP P16304
D	213	GLN	GLY	engineered mutation	UNP P16304
D	216	ALA	LYS	engineered mutation	UNP P16304
D	217	ARG	LYS	engineered mutation	UNP P16304

- Molecule 2 is BIS(ADENOSINE)-5'-PENTAPHOSPHATE (CCD ID: AP5) (formula: $C_{20}H_{29}N_{10}O_{22}P_5$).



Mol	Chain	Residues	Atoms				ZeroOcc	AltConf	
			Total	C	N	O			P
2	C	1	Total	C	N	O	P	0	0
			57	20	10	22	5		
2	B	1	Total	C	N	O	P	0	0
			57	20	10	22	5		

Continued on next page...

Continued from previous page...

Mol	Chain	Residues	Atoms				ZeroOcc	AltConf	
2	A	1	Total	C	N	O	P	0	0
			57	20	10	22	5		
2	D	1	Total	C	N	O	P	0	0
			57	20	10	22	5		

- Molecule 3 is ZINC ION (CCD ID: ZN) (formula: Zn).

Mol	Chain	Residues	Atoms		ZeroOcc	AltConf
3	B	1	Total	Zn	0	0
			1	1		
3	A	1	Total	Zn	0	0
			1	1		

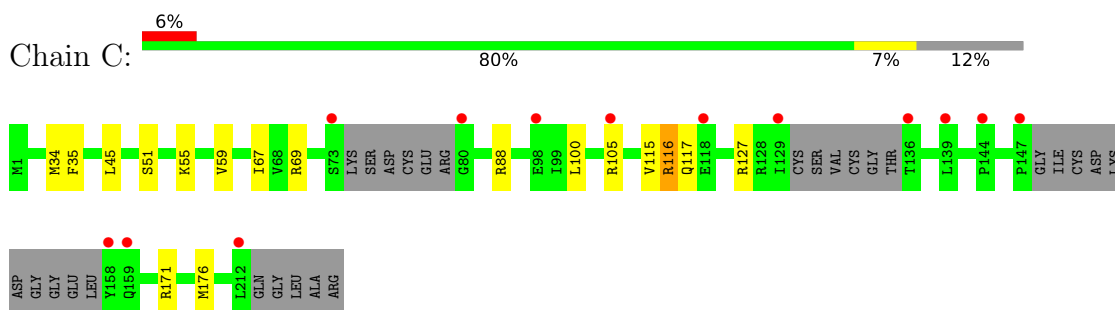
- Molecule 4 is water.

Mol	Chain	Residues	Atoms		ZeroOcc	AltConf
4	C	7	Total	O	0	0
			7	7		
4	B	4	Total	O	0	0
			4	4		
4	A	2	Total	O	0	0
			2	2		

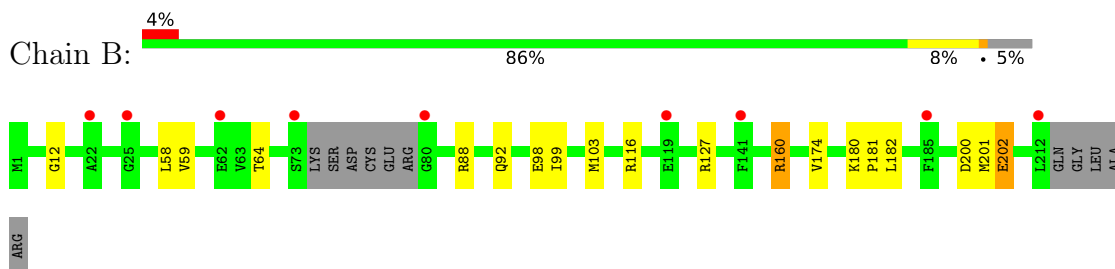
3 Residue-property plots [i](#)

These plots are drawn for all protein, RNA, DNA and oligosaccharide chains in the entry. The first graphic for a chain summarises the proportions of the various outlier classes displayed in the second graphic. The second graphic shows the sequence view annotated by issues in geometry and electron density. Residues are color-coded according to the number of geometric quality criteria for which they contain at least one outlier: green = 0, yellow = 1, orange = 2 and red = 3 or more. A red dot above a residue indicates a poor fit to the electron density ($RSRZ > 2$). Stretches of 2 or more consecutive residues without any outlier are shown as a green connector. Residues present in the sample, but not in the model, are shown in grey.

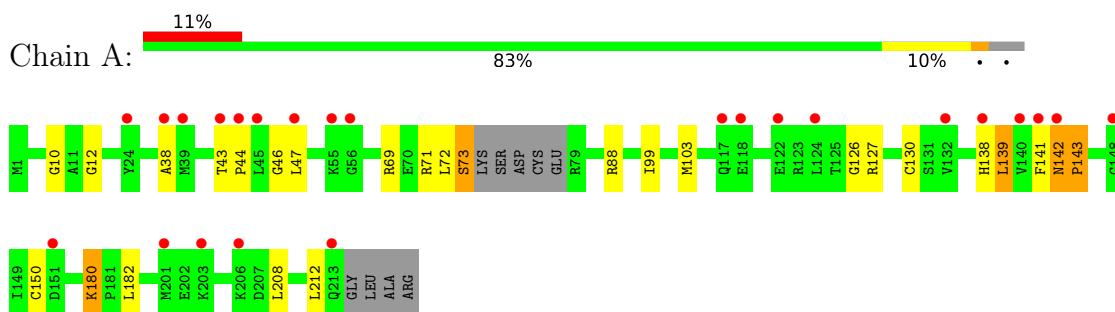
- Molecule 1: Adenylate kinase



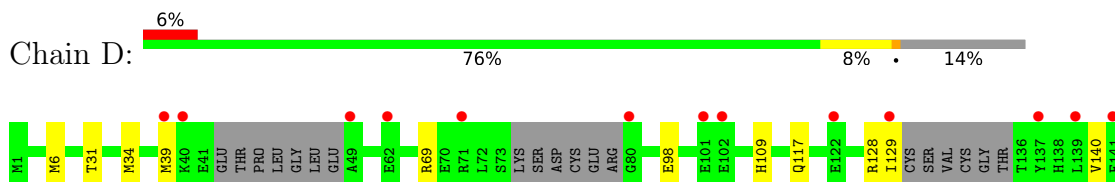
- Molecule 1: Adenylate kinase



- Molecule 1: Adenylate kinase



- Molecule 1: Adenylate kinase



•

M142	GLY
P143	ILE
P144	CYS
K145	ASP
T146	LYS
P147	ASP
	GLY
	GLY
	GLU
L157	GLU
Y158	
M176	
M179	
K180	
P181	
G214	
	LEU
	ALA
	ARG

4 Data and refinement statistics

Property	Value	Source
Space group	P 1 21 1	Depositor
Cell constants a, b, c, α , β , γ	43.64Å 123.34Å 86.69Å 90.00° 98.28° 90.00°	Depositor
Resolution (Å)	50.00 – 2.90 50.00 – 2.90	Depositor EDS
% Data completeness (in resolution range)	93.7 (50.00-2.90) 93.8 (50.00-2.90)	Depositor EDS
R_{merge}	0.16	Depositor
R_{sym}	(Not available)	Depositor
$\langle I/\sigma(I) \rangle$ ¹	2.02 (at 2.90Å)	Xtrriage
Refinement program	REFMAC 5.8.0049	Depositor
R, R_{free}	0.288 , 0.329 0.287 , 0.323	Depositor DCC
R_{free} test set	969 reflections (4.80%)	wwPDB-VP
Wilson B-factor (Å ²)	52.7	Xtrriage
Anisotropy	0.448	Xtrriage
Bulk solvent k_{sol} (e/Å ³), B_{sol} (Å ²)	0.34 , 41.1	EDS
L-test for twinning ²	$\langle L \rangle = 0.46$, $\langle L^2 \rangle = 0.29$	Xtrriage
Estimated twinning fraction	No twinning to report.	Xtrriage
F_o, F_c correlation	0.86	EDS
Total number of atoms	6504	wwPDB-VP
Average B, all atoms (Å ²)	63.0	wwPDB-VP

Xtrriage's analysis on translational NCS is as follows: *The largest off-origin peak in the Patterson function is 5.12% of the height of the origin peak. No significant pseudotranslation is detected.*

¹Intensities estimated from amplitudes.

²Theoretical values of $\langle |L| \rangle$, $\langle L^2 \rangle$ for acentric reflections are 0.5, 0.333 respectively for untwinned datasets, and 0.375, 0.2 for perfectly twinned datasets.

5 Model quality [i](#)

5.1 Standard geometry [i](#)

Bond lengths and bond angles in the following residue types are not validated in this section: AP5, ZN

The Z score for a bond length (or angle) is the number of standard deviations the observed value is removed from the expected value. A bond length (or angle) with $|Z| > 5$ is considered an outlier worth inspection. RMSZ is the root-mean-square of all Z scores of the bond lengths (or angles).

Mol	Chain	Bond lengths		Bond angles	
		RMSZ	# $ Z > 5$	RMSZ	# $ Z > 5$
1	A	0.74	0/1662	0.91	4/2231 (0.2%)
1	B	0.67	0/1642	0.81	0/2205
1	C	0.64	0/1536	0.79	0/2060
1	D	0.68	1/1503 (0.1%)	0.86	2/2012 (0.1%)
All	All	0.68	1/6343 (0.0%)	0.84	6/8508 (0.1%)

All (1) bond length outliers are listed below:

Mol	Chain	Res	Type	Atoms	Z	Observed(Å)	Ideal(Å)
1	D	109	HIS	C-O	-5.43	1.17	1.23

All (6) bond angle outliers are listed below:

Mol	Chain	Res	Type	Atoms	Z	Observed(°)	Ideal(°)
1	A	143	PRO	CA-C-N	-6.94	113.35	120.85
1	A	143	PRO	C-N-CA	-6.94	113.35	120.85
1	A	142	ASN	CA-C-N	-6.59	113.59	120.38
1	A	142	ASN	C-N-CA	-6.59	113.59	120.38
1	D	142	ASN	CA-C-N	-5.75	114.45	120.38
1	D	142	ASN	C-N-CA	-5.75	114.45	120.38

There are no chirality outliers.

There are no planarity outliers.

5.2 Too-close contacts [i](#)

In the following table, the Non-H and H(model) columns list the number of non-hydrogen atoms and hydrogen atoms in the chain respectively. The H(added) column lists the number of hydrogen atoms added and optimized by MolProbity. The Clashes column lists the number of clashes within

the asymmetric unit, whereas Symm-Clashes lists symmetry-related clashes.

Mol	Chain	Non-H	H(model)	H(added)	Clashes	Symm-Clashes
1	A	1640	0	1666	49	1
1	B	1620	0	1642	21	0
1	C	1516	0	1546	17	1
1	D	1485	0	1516	14	0
2	A	57	0	24	3	0
2	B	57	0	24	8	0
2	C	57	0	24	6	0
2	D	57	0	24	1	0
3	A	1	0	0	2	0
3	B	1	0	0	0	0
4	A	2	0	0	0	0
4	B	4	0	0	0	0
4	C	7	0	0	0	0
All	All	6504	0	6466	97	1

The all-atom clashscore is defined as the number of clashes found per 1000 atoms (including hydrogen atoms). The all-atom clashscore for this structure is 7.

All (97) close contacts within the same asymmetric unit are listed below, sorted by their clash magnitude.

Atom-1	Atom-2	Interatomic distance (Å)	Clash overlap (Å)
1:A:126:GLY:O	1:A:139:LEU:CD2	1.72	1.35
1:A:138:HIS:N	1:A:142:ASN:O	1.68	1.26
1:A:138:HIS:O	1:A:143:PRO:HA	1.13	1.23
1:C:117:GLN:NE2	1:C:176:MET:SD	2.12	1.22
1:A:138:HIS:O	1:A:143:PRO:CA	1.87	1.22
1:A:138:HIS:CD2	1:A:141:PHE:HD2	1.58	1.20
1:A:126:GLY:O	1:A:139:LEU:HD21	1.29	1.19
1:A:72:LEU:O	1:A:103:MET:HE1	1.45	1.14
1:A:138:HIS:NE2	1:A:141:PHE:HD2	1.48	1.12
1:A:138:HIS:NE2	1:A:141:PHE:CD2	2.24	1.04
1:A:138:HIS:HB3	1:A:142:ASN:H	1.19	1.02
1:A:138:HIS:CA	1:A:142:ASN:O	2.10	0.99
1:A:138:HIS:CD2	1:A:141:PHE:CD2	2.50	0.98
1:B:202:GLU:OE1	1:B:202:GLU:N	1.97	0.96
1:A:126:GLY:O	1:A:139:LEU:HD23	1.69	0.93
1:A:72:LEU:O	1:A:103:MET:CE	2.19	0.91
1:D:140:VAL:O	1:D:143:PRO:HD3	1.70	0.91
1:A:150:CYS:SG	3:A:301:ZN:ZN	1.67	0.82
1:A:138:HIS:O	1:A:142:ASN:O	1.99	0.81

Continued on next page...

Continued from previous page...

Atom-1	Atom-2	Interatomic distance (Å)	Clash overlap (Å)
1:C:116:ARG:HH12	1:B:116:ARG:HA	1.46	0.79
1:D:142:ASN:OD1	1:D:142:ASN:O	2.03	0.77
1:A:138:HIS:C	1:A:142:ASN:O	2.28	0.76
1:A:138:HIS:HB3	1:A:142:ASN:N	1.98	0.76
1:A:150:CYS:HG	3:A:301:ZN:ZN	0.99	0.74
1:A:43:THR:OG1	1:A:44:PRO:HD2	1.88	0.74
1:A:126:GLY:C	1:A:139:LEU:HD21	2.13	0.73
1:D:128:ARG:HB3	1:D:157:LEU:HD13	1.74	0.70
1:B:201:MET:HB2	1:B:202:GLU:OE1	1.91	0.69
1:A:69:ARG:O	1:A:73:SER:OG	2.11	0.68
1:A:138:HIS:CB	1:A:142:ASN:H	2.04	0.67
1:A:180:LYS:O	1:A:180:LYS:HD3	1.95	0.65
1:D:128:ARG:HB3	1:D:157:LEU:CD1	2.28	0.64
1:A:43:THR:OG1	1:A:44:PRO:CD	2.45	0.63
1:D:6:MET:HE3	1:D:179:MET:HE1	1.82	0.62
1:A:138:HIS:O	1:A:142:ASN:C	2.42	0.61
1:A:208:LEU:O	1:A:212:LEU:HD12	2.02	0.60
1:C:45:LEU:HD21	1:C:67:ILE:HD12	1.84	0.59
1:C:127:ARG:NH2	2:C:301:AP5:O2A	2.34	0.59
1:A:138:HIS:NE2	1:A:141:PHE:CE2	2.69	0.59
1:A:130:CYS:HG	1:A:150:CYS:HG	1.51	0.58
1:B:99:ILE:O	1:B:103:MET:HG3	2.03	0.58
1:A:127:ARG:NH1	2:A:302:AP5:O1G	2.36	0.57
1:C:115:VAL:HG12	1:C:116:ARG:H	1.68	0.57
1:C:51:SER:O	1:C:55:LYS:HG3	2.04	0.57
1:B:202:GLU:H	1:B:202:GLU:CD	2.13	0.56
1:A:138:HIS:CE1	1:A:141:PHE:CD2	2.92	0.56
1:A:43:THR:O	1:A:47:LEU:HD23	2.06	0.55
1:A:138:HIS:CB	1:A:142:ASN:O	2.54	0.55
1:A:138:HIS:O	1:A:143:PRO:N	2.39	0.55
1:B:127:ARG:HD3	2:B:302:AP5:H52A	1.89	0.53
1:A:139:LEU:CD2	1:A:139:LEU:N	2.72	0.52
1:C:116:ARG:NH1	1:B:116:ARG:HG2	2.25	0.52
1:D:117:GLN:HG2	1:D:176:MET:HE1	1.92	0.52
1:C:116:ARG:HH12	1:B:116:ARG:CA	2.19	0.52
1:D:180:LYS:HB2	1:D:181:PRO:HD3	1.93	0.51
1:B:180:LYS:HB2	1:B:181:PRO:HD3	1.92	0.50
1:A:99:ILE:O	1:A:103:MET:HG3	2.11	0.50
1:C:88:ARG:CD	2:C:301:AP5:C6B	2.90	0.50
1:A:180:LYS:HD3	1:A:180:LYS:C	2.34	0.49
1:C:88:ARG:HD3	2:C:301:AP5:C6B	2.42	0.49

Continued on next page...

Continued from previous page...

Atom-1	Atom-2	Interatomic distance (Å)	Clash overlap (Å)
1:B:127:ARG:HD3	2:B:302:AP5:C5F	2.42	0.49
1:D:129:ILE:O	1:D:158:TYR:CD1	2.65	0.49
1:D:31:THR:OG1	2:D:301:AP5:N7B	2.44	0.49
1:C:100:LEU:HB3	1:C:105:ARG:O	2.13	0.48
1:D:128:ARG:CB	1:D:157:LEU:CD1	2.91	0.48
1:A:126:GLY:C	1:A:139:LEU:CD2	2.72	0.48
1:B:12:GLY:HA2	2:B:302:AP5:O1A	2.14	0.48
1:D:6:MET:HE3	1:D:179:MET:CE	2.44	0.47
1:B:160:ARG:NH1	2:B:302:AP5:O1E	2.48	0.47
1:D:69:ARG:NH1	1:D:98:GLU:OE1	2.48	0.47
1:B:200:ASP:O	1:B:201:MET:C	2.57	0.46
1:C:88:ARG:HD3	2:C:301:AP5:C5B	2.46	0.46
1:A:130:CYS:SG	1:A:150:CYS:SG	3.15	0.45
1:D:117:GLN:CD	1:D:176:MET:HE1	2.42	0.45
1:A:88:ARG:C	1:A:182:LEU:HD11	2.42	0.45
1:C:35:PHE:CZ	1:C:59:VAL:HG21	2.51	0.45
1:A:130:CYS:SG	1:A:150:CYS:HB2	2.57	0.44
1:C:116:ARG:CZ	1:B:116:ARG:HG2	2.48	0.44
1:A:43:THR:HG23	1:A:46:GLY:H	1.82	0.44
1:C:34:MET:HE2	1:C:67:ILE:HG12	1.99	0.44
1:B:92:GLN:NE2	2:B:302:AP5:H62B	2.16	0.44
1:A:10:GLY:HA2	2:A:302:AP5:H51A	2.01	0.43
1:B:58:LEU:HG	1:B:174:VAL:CG1	2.49	0.43
1:A:139:LEU:HD23	1:A:139:LEU:H	1.83	0.42
1:B:98:GLU:OE2	1:D:34:MET:HA	2.20	0.42
1:A:139:LEU:CD2	1:A:139:LEU:H	2.32	0.42
1:A:12:GLY:HA2	2:A:302:AP5:O1A	2.19	0.42
1:B:88:ARG:C	1:B:182:LEU:HD11	2.45	0.41
1:A:138:HIS:CD2	1:A:141:PHE:HB2	2.55	0.41
2:C:301:AP5:H8A	2:C:301:AP5:H2F	1.91	0.41
1:A:38:ALA:HB1	1:A:43:THR:CG2	2.50	0.41
1:B:64:THR:HG21	2:B:302:AP5:N6B	2.36	0.41
1:A:138:HIS:HB3	1:A:142:ASN:C	2.45	0.40
1:C:115:VAL:HG12	1:C:116:ARG:N	2.33	0.40
1:B:59:VAL:N	2:B:302:AP5:H2B	2.35	0.40
1:B:59:VAL:O	2:B:302:AP5:H2B	2.21	0.40
1:C:171:ARG:NH1	2:C:301:AP5:O1G	2.54	0.40

All (1) symmetry-related close contacts are listed below. The label for Atom-2 includes the symmetry operator and encoded unit-cell translations to be applied.

Atom-1	Atom-2	Interatomic distance (Å)	Clash overlap (Å)
1:C:69:ARG:CD	1:A:71:ARG:NH2[2_557]	2.13	0.07

5.3 Torsion angles [i](#)

5.3.1 Protein backbone [i](#)

In the following table, the Percentiles column shows the percent Ramachandran outliers of the chain as a percentile score with respect to all X-ray entries followed by that with respect to entries of similar resolution.

The Analysed column shows the number of residues for which the backbone conformation was analysed, and the total number of residues.

Mol	Chain	Analysed	Favoured	Allowed	Outliers	Percentiles	
1	A	204/217 (94%)	196 (96%)	8 (4%)	0	100	100
1	B	202/217 (93%)	196 (97%)	6 (3%)	0	100	100
1	C	182/217 (84%)	177 (97%)	5 (3%)	0	100	100
1	D	176/217 (81%)	171 (97%)	5 (3%)	0	100	100
All	All	764/868 (88%)	740 (97%)	24 (3%)	0	100	100

There are no Ramachandran outliers to report.

5.3.2 Protein sidechains [i](#)

In the following table, the Percentiles column shows the percent sidechain outliers of the chain as a percentile score with respect to all X-ray entries followed by that with respect to entries of similar resolution.

The Analysed column shows the number of residues for which the sidechain conformation was analysed, and the total number of residues.

Mol	Chain	Analysed	Rotameric	Outliers	Percentiles	
1	A	178/185 (96%)	175 (98%)	3 (2%)	53	82
1	B	176/185 (95%)	174 (99%)	2 (1%)	65	88
1	C	164/185 (89%)	163 (99%)	1 (1%)	78	93
1	D	160/185 (86%)	156 (98%)	4 (2%)	42	74
All	All	678/740 (92%)	668 (98%)	10 (2%)	57	84

All (10) residues with a non-rotameric sidechain are listed below:

Mol	Chain	Res	Type
1	C	116	ARG
1	B	160	ARG
1	B	202	GLU
1	A	73	SER
1	A	139	LEU
1	A	180	LYS
1	D	39	MET
1	D	145	LYS
1	D	157	LEU
1	D	179	MET

Sometimes sidechains can be flipped to improve hydrogen bonding and reduce clashes. All (4) such sidechains are listed below:

Mol	Chain	Res	Type
1	C	112	HIS
1	C	194	ASN
1	B	112	HIS
1	D	109	HIS

5.3.3 RNA [i](#)

There are no RNA molecules in this entry.

5.4 Non-standard residues in protein, DNA, RNA chains [i](#)

There are no non-standard protein/DNA/RNA residues in this entry.

5.5 Carbohydrates [i](#)

There are no oligosaccharides in this entry.

5.6 Ligand geometry [i](#)

Of 6 ligands modelled in this entry, 2 are monoatomic - leaving 4 for Mogul analysis.

In the following table, the Counts columns list the number of bonds (or angles) for which Mogul statistics could be retrieved, the number of bonds (or angles) that are observed in the model and the number of bonds (or angles) that are defined in the Chemical Component Dictionary. The Link column lists molecule types, if any, to which the group is linked. The Z score for a bond length (or angle) is the number of standard deviations the observed value is removed from the

expected value. A bond length (or angle) with $|Z| > 2$ is considered an outlier worth inspection. RMSZ is the root-mean-square of all Z scores of the bond lengths (or angles).

Mol	Type	Chain	Res	Link	Bond lengths			Bond angles		
					Counts	RMSZ	# Z > 2	Counts	RMSZ	# Z > 2
2	AP5	A	302	-	62,62,62	1.50	8 (12%)	89,98,98	1.94	20 (22%)
2	AP5	B	302	-	62,62,62	1.76	14 (22%)	89,98,98	2.09	25 (28%)
2	AP5	C	301	-	62,62,62	1.55	9 (14%)	89,98,98	1.87	19 (21%)
2	AP5	D	301	-	62,62,62	1.39	10 (16%)	89,98,98	1.80	21 (23%)

In the following table, the Chirals column lists the number of chiral outliers, the number of chiral centers analysed, the number of these observed in the model and the number defined in the Chemical Component Dictionary. Similar counts are reported in the Torsion and Rings columns. '-' means no outliers of that kind were identified.

Mol	Type	Chain	Res	Link	Chirals	Torsions	Rings
2	AP5	A	302	-	-	13/44/76/76	0/6/6/6
2	AP5	B	302	-	-	8/44/76/76	0/6/6/6
2	AP5	C	301	-	-	7/44/76/76	0/6/6/6
2	AP5	D	301	-	-	5/44/76/76	0/6/6/6

All (41) bond length outliers are listed below:

Mol	Chain	Res	Type	Atoms	Z	Observed(Å)	Ideal(Å)
2	C	301	AP5	C5B-N7B	-4.78	1.30	1.39
2	D	301	AP5	C5B-C4B	4.46	1.47	1.39
2	D	301	AP5	C5A-C4A	4.35	1.46	1.39
2	B	302	AP5	C5A-C4A	4.31	1.46	1.39
2	A	302	AP5	C5B-N7B	-4.14	1.31	1.39
2	B	302	AP5	C5B-C4B	4.01	1.46	1.39
2	C	301	AP5	C4B-N9B	-3.88	1.29	1.37
2	B	302	AP5	PA-O3A	-3.87	1.55	1.59
2	B	302	AP5	C5A-N7A	-3.82	1.32	1.39
2	C	301	AP5	C5A-C4A	3.71	1.45	1.39
2	A	302	AP5	C5A-N7A	-3.60	1.32	1.39
2	A	302	AP5	C5A-C4A	3.54	1.45	1.39
2	B	302	AP5	C5B-N7B	-3.50	1.32	1.39
2	A	302	AP5	C4A-N9A	-3.47	1.30	1.37
2	C	301	AP5	C5A-N7A	-3.40	1.32	1.39
2	A	302	AP5	C4B-N9B	-3.22	1.31	1.37
2	D	301	AP5	C4A-N9A	-3.20	1.31	1.37
2	A	302	AP5	C5B-C4B	3.18	1.44	1.39
2	B	302	AP5	C4B-N9B	-3.17	1.31	1.37

Continued on next page...

Continued from previous page...

Mol	Chain	Res	Type	Atoms	Z	Observed(Å)	Ideal(Å)
2	B	302	AP5	PB-O3A	-3.01	1.56	1.59
2	C	301	AP5	C5B-C4B	2.99	1.44	1.39
2	B	302	AP5	C8B-N9B	-2.87	1.32	1.37
2	A	302	AP5	C8B-N9B	-2.87	1.32	1.37
2	C	301	AP5	C8B-N9B	-2.86	1.32	1.37
2	C	301	AP5	C4A-N9A	-2.82	1.31	1.37
2	B	302	AP5	PD-O3G	-2.76	1.56	1.59
2	A	302	AP5	C8A-N9A	-2.76	1.32	1.37
2	B	302	AP5	C4A-N9A	-2.63	1.32	1.37
2	D	301	AP5	C4B-N9B	-2.54	1.32	1.37
2	D	301	AP5	C5B-N7B	-2.48	1.34	1.39
2	D	301	AP5	C5B-C6B	2.40	1.47	1.41
2	D	301	AP5	C5A-C6A	2.40	1.47	1.41
2	D	301	AP5	C5A-N7A	-2.39	1.34	1.39
2	D	301	AP5	C8A-N7A	2.38	1.36	1.31
2	B	302	AP5	C2J-C3J	-2.33	1.47	1.53
2	C	301	AP5	C8A-N9A	-2.30	1.33	1.37
2	B	302	AP5	C5B-C6B	2.20	1.47	1.41
2	D	301	AP5	C8B-N7B	2.11	1.35	1.31
2	B	302	AP5	C8A-N7A	2.11	1.35	1.31
2	C	301	AP5	C5A-C6A	2.07	1.46	1.41
2	B	302	AP5	O4J-C4J	-2.01	1.40	1.45

All (85) bond angle outliers are listed below:

Mol	Chain	Res	Type	Atoms	Z	Observed(°)	Ideal(°)
2	B	302	AP5	C5A-C4A-N3A	-6.68	117.52	126.72
2	A	302	AP5	C5B-C4B-N3B	-6.44	117.85	126.72
2	C	301	AP5	C5A-C4A-N3A	-6.27	118.08	126.72
2	C	301	AP5	C5B-C4B-N3B	-5.74	118.81	126.72
2	A	302	AP5	C5A-C4A-N3A	-5.71	118.86	126.72
2	B	302	AP5	C5B-C4B-N3B	-5.61	118.99	126.72
2	D	301	AP5	C5B-C4B-N3B	-5.10	119.69	126.72
2	B	302	AP5	N3A-C4A-N9A	4.82	135.36	127.17
2	A	302	AP5	N3B-C4B-N9B	4.73	135.22	127.17
2	C	301	AP5	N3A-C4A-N9A	4.48	134.78	127.17
2	D	301	AP5	C5A-C4A-N3A	-4.43	120.61	126.72
2	B	302	AP5	C4B-C5B-N7B	-4.42	105.53	110.58
2	A	302	AP5	N3A-C4A-N9A	4.31	134.49	127.17
2	D	301	AP5	N3B-C4B-N9B	4.23	134.36	127.17
2	B	302	AP5	O2J-C2J-C3J	-4.18	98.42	111.82
2	C	301	AP5	N3B-C4B-N9B	4.12	134.17	127.17

Continued on next page...

Continued from previous page...

Mol	Chain	Res	Type	Atoms	Z	Observed(°)	Ideal(°)
2	B	302	AP5	O4F-C1F-N9A	4.05	115.86	108.09
2	A	302	AP5	C2B-N3B-C4B	4.04	121.70	111.83
2	D	301	AP5	N3A-C2A-N1A	-4.00	122.52	128.58
2	B	302	AP5	N3B-C4B-N9B	3.93	133.85	127.17
2	D	301	AP5	N3B-C2B-N1B	-3.93	122.64	128.58
2	C	301	AP5	C4A-C5A-N7A	-3.90	106.12	110.58
2	B	302	AP5	O2E-PE-O3D	3.81	117.56	107.27
2	B	302	AP5	O3J-C3J-C2J	-3.79	99.68	111.82
2	C	301	AP5	C2B-N3B-C4B	3.77	121.03	111.83
2	C	301	AP5	C2A-N3A-C4A	3.76	121.01	111.83
2	B	302	AP5	C2A-N3A-C4A	3.67	120.80	111.83
2	C	301	AP5	N3B-C2B-N1B	-3.66	123.04	128.58
2	D	301	AP5	C2B-N3B-C4B	3.66	120.76	111.83
2	A	302	AP5	N3B-C2B-N1B	-3.57	123.18	128.58
2	D	301	AP5	N3A-C4A-N9A	3.52	133.16	127.17
2	D	301	AP5	C2A-N3A-C4A	3.50	120.38	111.83
2	B	302	AP5	C2B-N3B-C4B	3.46	120.27	111.83
2	D	301	AP5	C4A-N9A-C8A	3.46	109.37	105.74
2	A	302	AP5	C2A-N3A-C4A	3.40	120.15	111.83
2	A	302	AP5	C4B-C5B-N7B	-3.35	106.75	110.58
2	A	302	AP5	C4A-C5A-N7A	-3.35	106.75	110.58
2	A	302	AP5	C3J-C2J-C1J	3.33	107.75	101.46
2	A	302	AP5	O2G-PG-O3G	3.28	116.13	107.27
2	D	301	AP5	C4B-N9B-C8B	3.26	109.16	105.74
2	B	302	AP5	N3B-C2B-N1B	-3.24	123.68	128.58
2	B	302	AP5	C3J-C2J-C1J	3.22	107.55	101.46
2	D	301	AP5	C4B-C5B-N7B	-3.20	106.92	110.58
2	D	301	AP5	C4A-C5A-N7A	-3.06	107.08	110.58
2	B	302	AP5	C4A-C5A-N7A	-2.94	107.22	110.58
2	A	302	AP5	N3A-C2A-N1A	-2.92	124.16	128.58
2	B	302	AP5	C5B-N7B-C8B	2.80	107.85	103.45
2	C	301	AP5	N3A-C2A-N1A	-2.79	124.37	128.58
2	B	302	AP5	O4F-C1F-C2F	-2.74	100.74	106.62
2	C	301	AP5	C3J-C2J-C1J	2.70	106.57	101.46
2	B	302	AP5	N3A-C2A-N1A	-2.68	124.53	128.58
2	A	302	AP5	O2J-C2J-C3J	-2.67	103.25	111.82
2	B	302	AP5	C2B-N1B-C6B	2.66	123.09	118.73
2	C	301	AP5	C5A-N7A-C8A	2.64	107.60	103.45
2	C	301	AP5	O2J-C2J-C3J	-2.63	103.37	111.82
2	D	301	AP5	C2A-N1A-C6A	2.51	122.86	118.73
2	D	301	AP5	C6A-C5A-N7A	2.50	136.91	132.09
2	A	302	AP5	O2F-C2F-C3F	-2.46	103.94	111.82

Continued on next page...

Continued from previous page...

Mol	Chain	Res	Type	Atoms	Z	Observed(°)	Ideal(°)
2	B	302	AP5	C6B-C5B-N7B	2.44	136.80	132.09
2	D	301	AP5	C3J-C2J-C1J	2.44	106.07	101.46
2	D	301	AP5	C6B-C5B-N7B	2.40	136.72	132.09
2	C	301	AP5	C4B-C5B-N7B	-2.38	107.86	110.58
2	A	302	AP5	C4A-N9A-C8A	2.36	108.22	105.74
2	A	302	AP5	C3F-C2F-C1F	2.35	105.91	101.46
2	D	301	AP5	C5B-N7B-C8B	2.35	107.14	103.45
2	D	301	AP5	C2B-N1B-C6B	2.35	122.59	118.73
2	B	302	AP5	C4F-O4F-C1F	-2.30	104.38	109.47
2	B	302	AP5	C1F-N9A-C8A	-2.30	122.00	127.09
2	A	302	AP5	C5B-N7B-C8B	2.27	107.01	103.45
2	C	301	AP5	O2G-PG-O3B	2.25	113.36	107.27
2	D	301	AP5	N9A-C8A-N7A	-2.24	110.76	113.94
2	A	302	AP5	C2F-C1F-N9A	-2.20	107.83	113.30
2	D	301	AP5	N9B-C8B-N7B	-2.19	110.82	113.94
2	C	301	AP5	O3A-PB-O1B	-2.18	104.14	110.70
2	C	301	AP5	O2A-PA-O1A	2.18	122.58	112.44
2	B	302	AP5	C4B-N9B-C8B	2.17	108.01	105.74
2	A	302	AP5	O3F-C3F-C2F	-2.14	104.94	111.82
2	C	301	AP5	C3F-C2F-C1F	2.13	105.50	101.46
2	B	302	AP5	C5F-C4F-C3F	-2.10	107.66	115.21
2	D	301	AP5	C2J-C1J-N9B	-2.09	108.12	113.30
2	A	302	AP5	C5A-N7A-C8A	2.08	106.72	103.45
2	B	302	AP5	O2D-PD-O1D	2.05	121.98	112.44
2	C	301	AP5	C2B-N1B-C6B	2.05	122.09	118.73
2	C	301	AP5	O5F-PA-O1A	-2.04	100.85	108.94
2	B	302	AP5	C4A-N9A-C1F	2.02	131.35	126.63

There are no chirality outliers.

All (33) torsion outliers are listed below:

Mol	Chain	Res	Type	Atoms
2	B	302	AP5	C5J-O5J-PE-O1E
2	B	302	AP5	O4F-C4F-C5F-O5F
2	B	302	AP5	O4J-C4J-C5J-O5J
2	A	302	AP5	C5F-O5F-PA-O1A
2	A	302	AP5	C5F-O5F-PA-O2A
2	A	302	AP5	C5J-O5J-PE-O1E
2	B	302	AP5	C3J-C4J-C5J-O5J
2	A	302	AP5	O4J-C4J-C5J-O5J
2	B	302	AP5	C3F-C4F-C5F-O5F
2	A	302	AP5	C3J-C4J-C5J-O5J

Continued on next page...

Continued from previous page...

Mol	Chain	Res	Type	Atoms
2	C	301	AP5	O4F-C4F-C5F-O5F
2	C	301	AP5	C3F-C4F-C5F-O5F
2	C	301	AP5	PG-O3G-PD-O1D
2	C	301	AP5	C2F-C1F-N9A-C8A
2	B	302	AP5	C5J-O5J-PE-O3D
2	B	302	AP5	C5J-O5J-PE-O2E
2	A	302	AP5	C5F-O5F-PA-O3A
2	A	302	AP5	C5J-O5J-PE-O3D
2	A	302	AP5	PD-O3G-PG-O2G
2	A	302	AP5	PD-O3D-PE-O2E
2	D	301	AP5	PG-O3G-PD-O1D
2	D	301	AP5	PG-O3G-PD-O2D
2	C	301	AP5	O4J-C4J-C5J-O5J
2	C	301	AP5	PA-O3A-PB-O1B
2	A	302	AP5	PE-O3D-PD-O2D
2	D	301	AP5	O4J-C4J-C5J-O5J
2	C	301	AP5	PA-O3A-PB-O2B
2	B	302	AP5	PD-O3D-PE-O2E
2	A	302	AP5	PD-O3G-PG-O1G
2	A	302	AP5	PD-O3D-PE-O1E
2	D	301	AP5	PG-O3B-PB-O2B
2	A	302	AP5	PB-O3A-PA-O2A
2	D	301	AP5	PD-O3G-PG-O2G

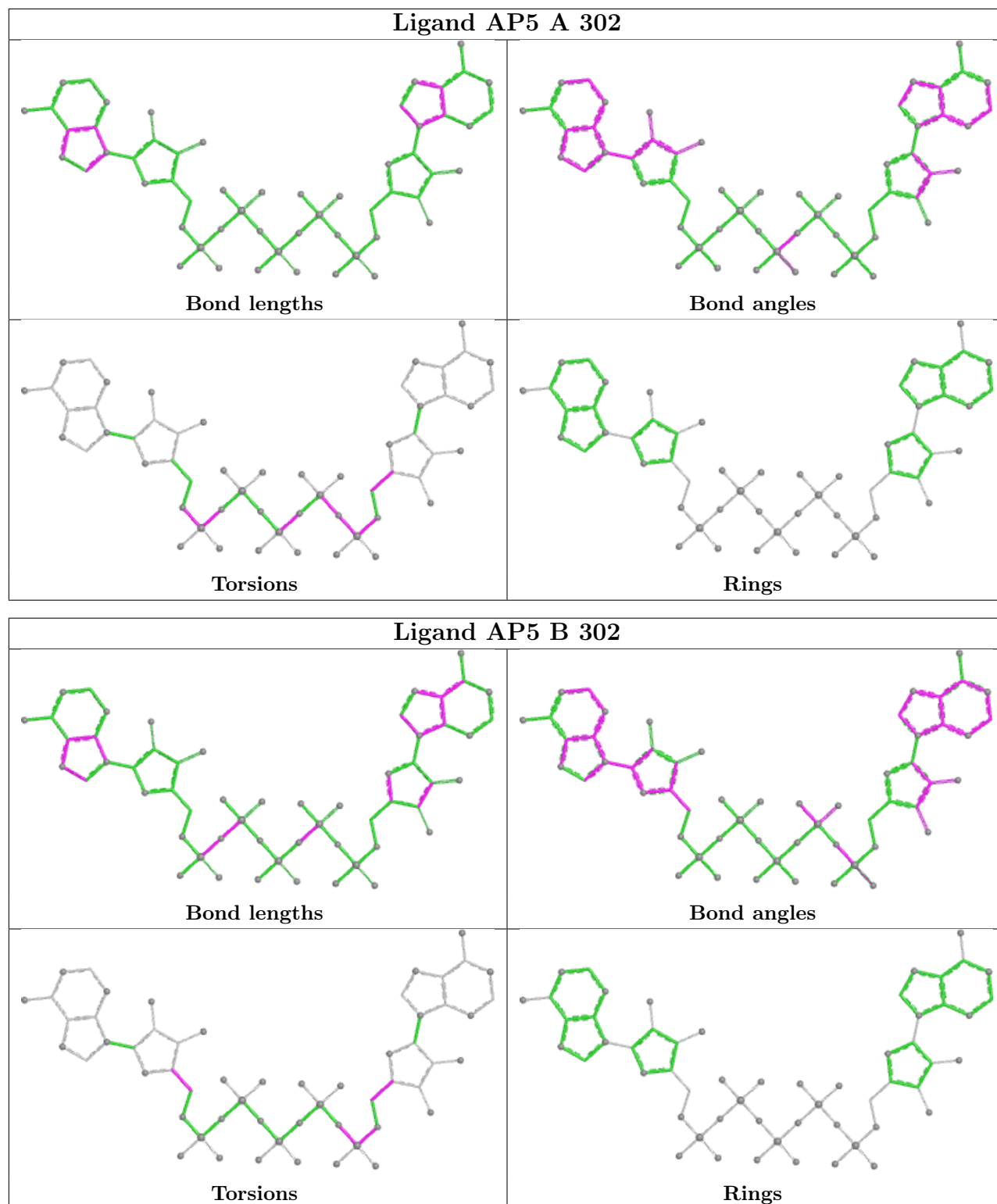
There are no ring outliers.

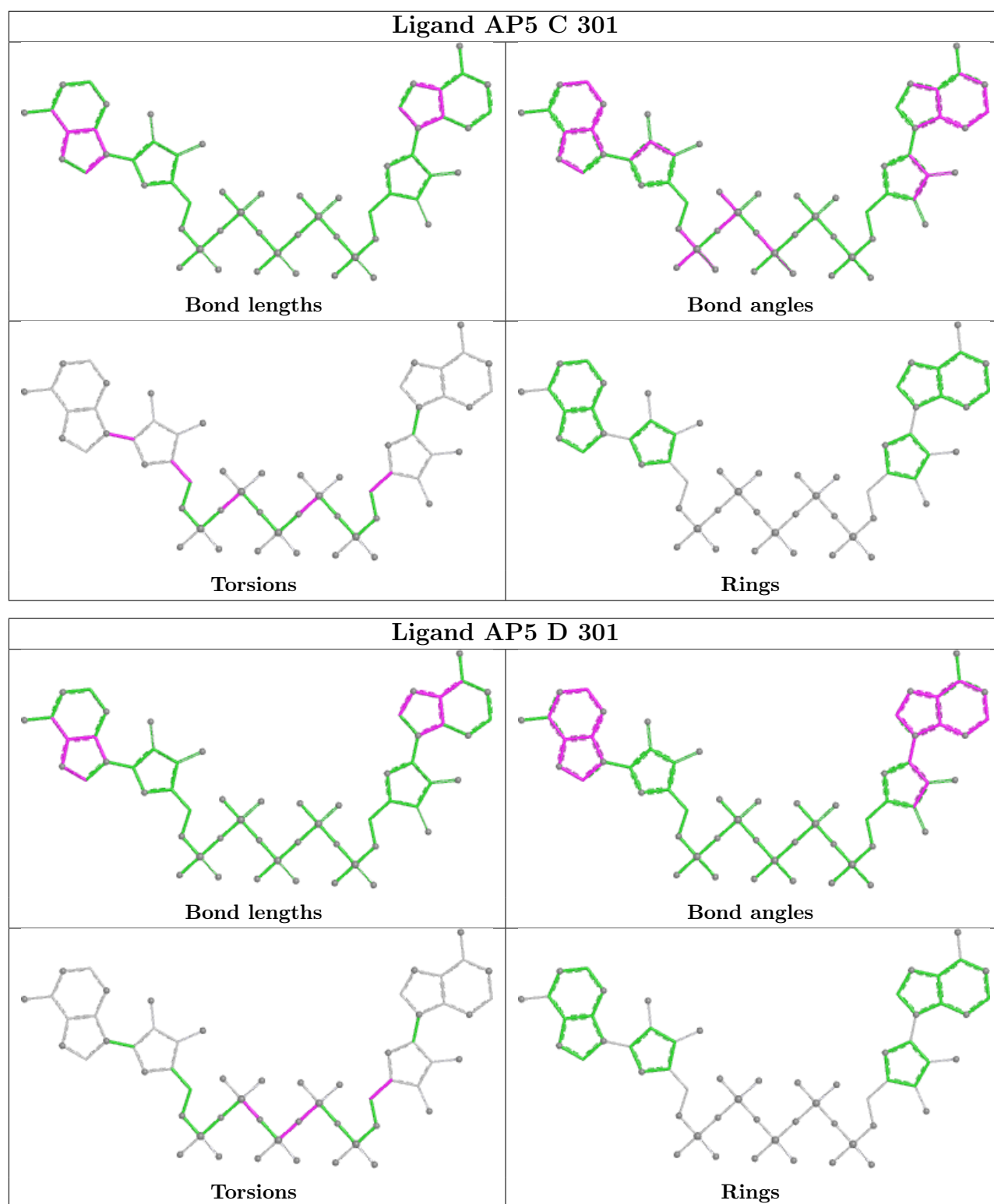
4 monomers are involved in 18 short contacts:

Mol	Chain	Res	Type	Clashes	Symm-Clashes
2	A	302	AP5	3	0
2	B	302	AP5	8	0
2	C	301	AP5	6	0
2	D	301	AP5	1	0

The following is a two-dimensional graphical depiction of Mogul quality analysis of bond lengths, bond angles, torsion angles, and ring geometry for all instances of the Ligand of Interest. In addition, ligands with molecular weight > 250 and outliers as shown on the validation Tables will also be included. For torsion angles, if less than 5% of the Mogul distribution of torsion angles is within 10 degrees of the torsion angle in question, then that torsion angle is considered an outlier. Any bond that is central to one or more torsion angles identified as an outlier by Mogul will be highlighted in the graph. For rings, the root-mean-square deviation (RMSD) between the ring in question and similar rings identified by Mogul is calculated over all ring torsion angles. If the average RMSD is greater than 60 degrees and the minimal RMSD between the ring in question and

any Mogul-identified rings is also greater than 60 degrees, then that ring is considered an outlier. The outliers are highlighted in purple. The color gray indicates Mogul did not find sufficient equivalents in the CSD to analyse the geometry.





5.7 Other polymers [\(i\)](#)

There are no such residues in this entry.

5.8 Polymer linkage issues

There are no chain breaks in this entry.

6 Fit of model and data

6.1 Protein, DNA and RNA chains

In the following table, the column labelled ‘#RSRZ> 2’ contains the number (and percentage) of RSRZ outliers, followed by percent RSRZ outliers for the chain as percentile scores relative to all X-ray entries and entries of similar resolution. The OWAB column contains the minimum, median, 95th percentile and maximum values of the occupancy-weighted average B-factor per residue. The column labelled ‘Q< 0.9’ lists the number of (and percentage) of residues with an average occupancy less than 0.9.

Mol	Chain	Analysed	<RSRZ>	#RSRZ>2	OWAB(Å ²)	Q<0.9
1	A	208/217 (95%)	1.00	24 (11%) 9 8	36, 65, 99, 115	0
1	B	206/217 (94%)	0.68	9 (4%) 39 30	33, 57, 82, 94	0
1	C	190/217 (87%)	0.71	13 (6%) 23 18	39, 56, 82, 107	0
1	D	186/217 (85%)	0.95	14 (7%) 20 16	41, 62, 87, 103	0
All	All	790/868 (91%)	0.83	60 (7%) 20 16	33, 60, 89, 115	0

All (60) RSRZ outliers are listed below:

Mol	Chain	Res	Type	RSRZ
1	C	129	ILE	5.2
1	D	143	PRO	4.4
1	A	44	PRO	3.9
1	A	45	LEU	3.8
1	D	49	ALA	3.7
1	C	139	LEU	3.7
1	A	132	VAL	3.6
1	D	101	GLU	3.5
1	A	138	HIS	3.3
1	D	122	GLU	3.2
1	C	73	SER	3.2
1	A	140	VAL	3.1
1	B	141	PHE	2.9
1	B	62	GLU	2.9
1	A	124	LEU	2.8
1	C	147	PRO	2.8
1	A	122	GLU	2.8
1	B	80	GLY	2.7
1	B	73	SER	2.7
1	D	137	TYR	2.6
1	C	136	THR	2.6

Continued on next page...

Continued from previous page...

Mol	Chain	Res	Type	RSRZ
1	C	159	GLN	2.6
1	A	141	PHE	2.5
1	A	47	LEU	2.5
1	B	25	GLY	2.4
1	D	80	GLY	2.4
1	B	185	PHE	2.4
1	D	40	LYS	2.4
1	D	71	ARG	2.4
1	A	43	THR	2.4
1	C	98	GLU	2.4
1	D	139	LEU	2.4
1	A	201	MET	2.3
1	C	212	LEU	2.3
1	A	203	LYS	2.3
1	A	151	ASP	2.3
1	A	55	LYS	2.3
1	A	118	GLU	2.3
1	D	62	GLU	2.3
1	D	102	GLU	2.3
1	B	212	LEU	2.3
1	A	213	GLN	2.3
1	D	129	ILE	2.3
1	D	141	PHE	2.3
1	D	39	MET	2.3
1	A	117	GLN	2.2
1	A	39	MET	2.2
1	A	206	LYS	2.2
1	A	38	ALA	2.2
1	A	56	GLY	2.2
1	C	105	ARG	2.1
1	C	144	PRO	2.1
1	C	158	TYR	2.1
1	A	142	ASN	2.1
1	C	80	GLY	2.1
1	C	118	GLU	2.1
1	B	119	GLU	2.1
1	A	24	TYR	2.1
1	A	148	GLY	2.0
1	B	22	ALA	2.0

6.2 Non-standard residues in protein, DNA, RNA chains [i](#)

There are no non-standard protein/DNA/RNA residues in this entry.

6.3 Carbohydrates [i](#)

There are no oligosaccharides in this entry.

6.4 Ligands [i](#)

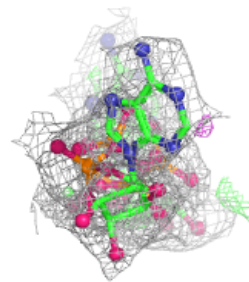
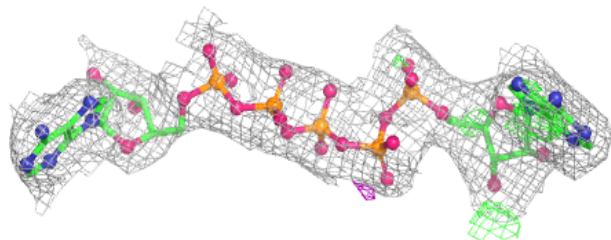
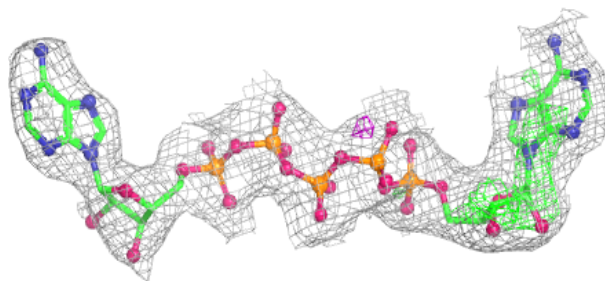
In the following table, the Atoms column lists the number of modelled atoms in the group and the number defined in the chemical component dictionary. The B-factors column lists the minimum, median, 95th percentile and maximum values of B factors of atoms in the group. The column labelled 'Q< 0.9' lists the number of atoms with occupancy less than 0.9.

Mol	Type	Chain	Res	Atoms	RSCC	RSR	B-factors(Å ²)	Q<0.9
2	AP5	C	301	57/57	0.89	0.16	65,79,90,90	0
2	AP5	D	301	57/57	0.89	0.17	76,94,119,121	0
2	AP5	A	302	57/57	0.90	0.15	73,83,100,102	0
2	AP5	B	302	57/57	0.92	0.16	70,80,103,108	0
3	ZN	A	301	1/1	0.96	0.06	139,139,139,139	0
3	ZN	B	301	1/1	0.99	0.07	112,112,112,112	0

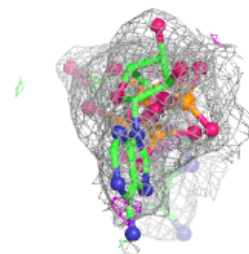
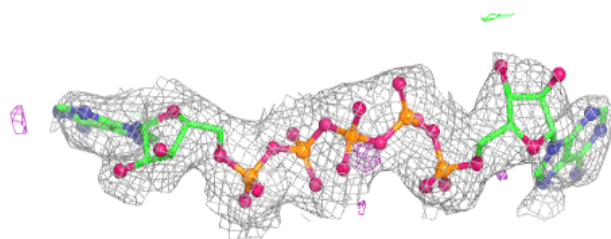
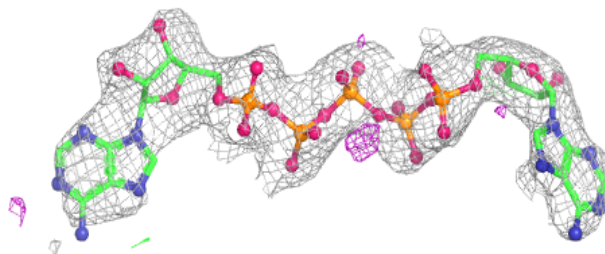
The following is a graphical depiction of the model fit to experimental electron density of all instances of the Ligand of Interest. In addition, ligands with molecular weight > 250 and outliers as shown on the geometry validation Tables will also be included. Each fit is shown from different orientation to approximate a three-dimensional view.

Electron density around AP5 C 301:

$2mF_o-DF_c$ (at 0.7 rmsd) in gray
 mF_o-DF_c (at 3 rmsd) in purple (negative)
and green (positive)

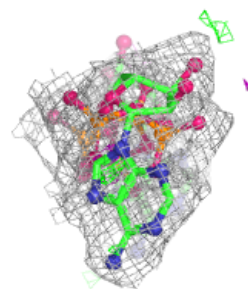
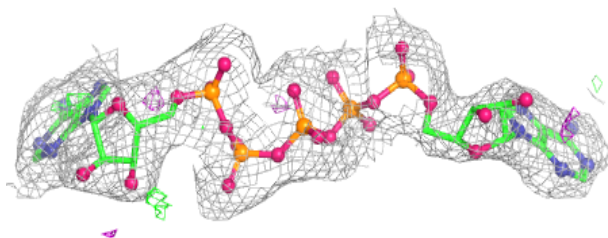
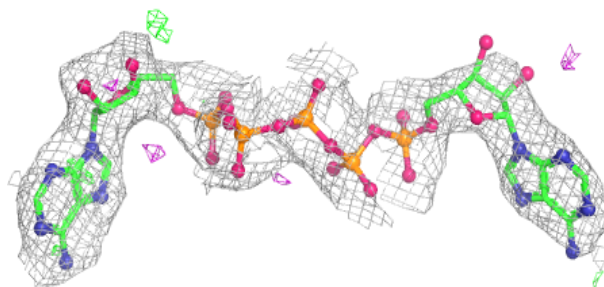
**Electron density around AP5 D 301:**

$2mF_o-DF_c$ (at 0.7 rmsd) in gray
 mF_o-DF_c (at 3 rmsd) in purple (negative)
and green (positive)

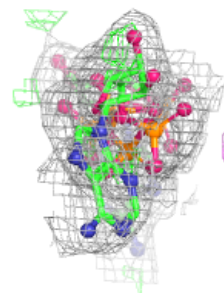
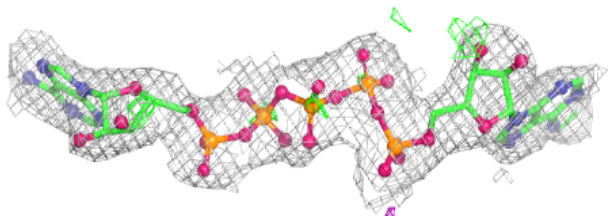
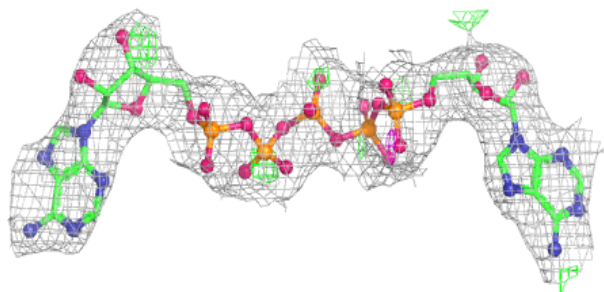


Electron density around AP5 A 302:

$2mF_o-DF_c$ (at 0.7 rmsd) in gray
 mF_o-DF_c (at 3 rmsd) in purple (negative)
and green (positive)

**Electron density around AP5 B 302:**

$2mF_o-DF_c$ (at 0.7 rmsd) in gray
 mF_o-DF_c (at 3 rmsd) in purple (negative)
and green (positive)



6.5 Other polymers [i](#)

There are no such residues in this entry.