



# wwPDB X-ray Structure Validation Summary Report ⓘ

Mar 9, 2026 – 03:45 AM UTC

PDB ID : 4UCF / pdb\_00004ucf  
Title : Crystal structure of Bifidobacterium bifidum beta-galactosidase in complex with alpha-galactose  
Authors : Godoy, A.S.; Murakami, M.T.; Camilo, C.M.; Bernardes, A.; Polikarpov, I.  
Deposited on : 2014-12-03  
Resolution : 1.94 Å(reported)

This is a wwPDB X-ray Structure Validation Summary Report for a publicly released PDB entry.

We welcome your comments at [validation@mail.wwpdb.org](mailto:validation@mail.wwpdb.org)

A user guide is available at

<https://www.wwpdb.org/validation/2017/XrayValidationReportHelp>

with specific help available everywhere you see the ⓘ symbol.

The types of validation reports are described at

<http://www.wwpdb.org/validation/2017/FAQs#types>.

---

The following versions of software and data (see [references ⓘ](#)) were used in the production of this report:

MolProbity : 4-5-2 with Phenix2.0  
Mogul : 2022.3.0, CSD as543be (2022)  
Xtriage (Phenix) : 2.0  
EDS : 3.0  
Percentile statistics : 20250101.v01 (using entries in the PDB archive January 1st 2025)  
CCP4 : 9.0.010 (Gargrove)  
Density-Fitness : 1.0.12  
Ideal geometry (proteins) : Engh & Huber (2001)  
Ideal geometry (DNA, RNA) : Parkinson et al. (1996)  
Validation Pipeline (wwPDB-VP) : 2.49

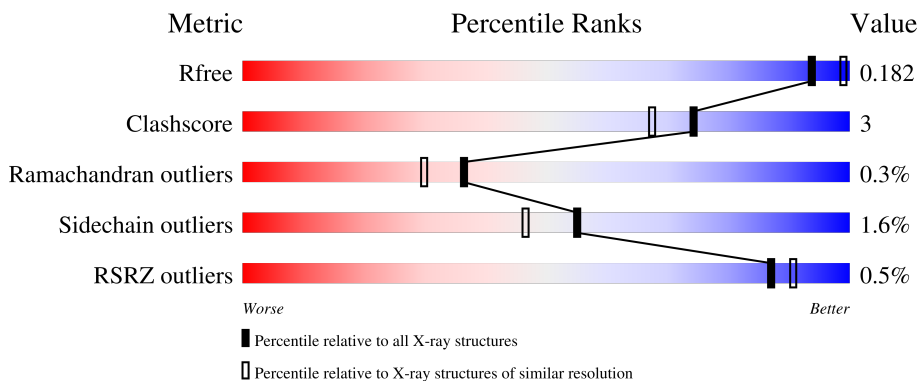
# 1 Overall quality at a glance

The following experimental techniques were used to determine the structure:

*X-RAY DIFFRACTION*

The reported resolution of this entry is 1.94 Å.

Percentile scores (ranging between 0-100) for global validation metrics of the entry are shown in the following graphic. The table shows the number of entries on which the scores are based.



Metric	Whole archive (#Entries)	Similar resolution (#Entries, resolution range(Å))
$R_{free}$	180053	1452 (1.94-1.94)
Clashscore	190562	1494 (1.94-1.94)
Ramachandran outliers	187476	1479 (1.94-1.94)
Sidechain outliers	187428	1479 (1.94-1.94)
RSRZ outliers	180081	1453 (1.94-1.94)

The table below summarises the geometric issues observed across the polymeric chains and their fit to the electron density. The red, orange, yellow and green segments of the lower bar indicate the fraction of residues that contain outliers for  $\geq 3$ , 2, 1 and 0 types of geometric quality criteria respectively. A grey segment represents the fraction of residues that are not modelled. The numeric value for each fraction is indicated below the corresponding segment, with a dot representing fractions  $\leq 5\%$ . The upper red bar (where present) indicates the fraction of residues that have poor fit to the electron density. The numeric value is given above the bar.

Mol	Chain	Length	Quality of chain
1	A	689	92% 7% .
1	B	689	91% 8% .
1	C	689	89% 10% .

## 2 Entry composition [i](#)

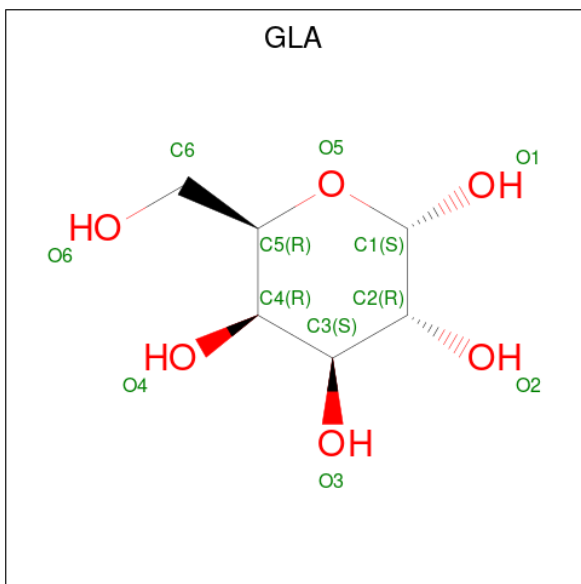
There are 5 unique types of molecules in this entry. The entry contains 18271 atoms, of which 0 are hydrogens and 0 are deuteriums.

In the tables below, the ZeroOcc column contains the number of atoms modelled with zero occupancy, the AltConf column contains the number of residues with at least one atom in alternate conformation and the Trace column contains the number of residues modelled with at most 2 atoms.

- Molecule 1 is a protein called BETA-GALACTOSIDASE.

Mol	Chain	Residues	Atoms					ZeroOcc	AltConf	Trace
			Total	C	N	O	S			
1	A	682	Total 5383	C 3407	N 926	O 1025	S 25	0	3	0
1	B	686	Total 5391	C 3413	N 932	O 1021	S 25	0	1	0
1	C	684	Total 5381	C 3407	N 930	O 1019	S 25	0	0	0

- Molecule 2 is alpha-D-galactopyranose (CCD ID: GLA) (formula: C<sub>6</sub>H<sub>12</sub>O<sub>6</sub>).



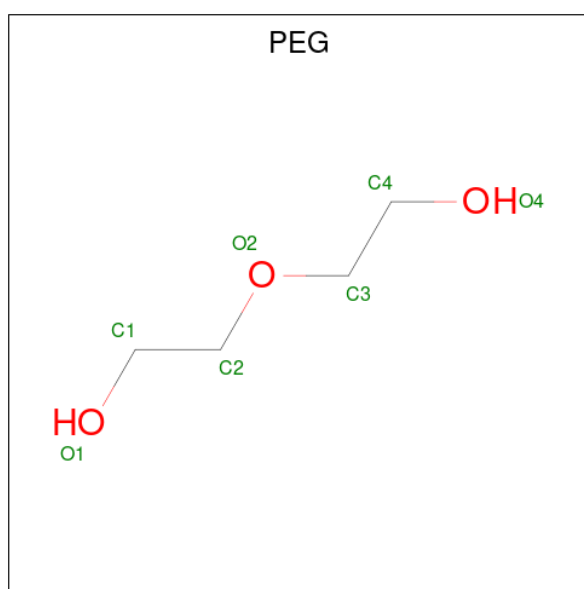
Mol	Chain	Residues	Atoms			ZeroOcc	AltConf
			Total	C	O		
2	A	1	Total 12	C 6	O 6	0	0
2	A	1	Total 12	C 6	O 6	0	0
2	A	1	Total 12	C 6	O 6	0	0

*Continued on next page...*

Continued from previous page...

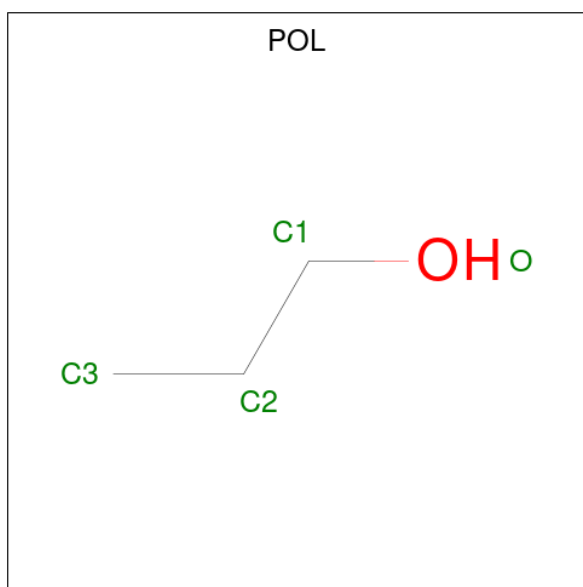
Mol	Chain	Residues	Atoms			ZeroOcc	AltConf
2	B	1	Total	C	O	0	0
			12	6	6		
2	B	1	Total	C	O	0	0
			12	6	6		
2	C	1	Total	C	O	0	0
			12	6	6		
2	C	1	Total	C	O	0	0
			12	6	6		

- Molecule 3 is DI(HYDROXYETHYL)ETHER (CCD ID: PEG) (formula:  $C_4H_{10}O_3$ ).



Mol	Chain	Residues	Atoms			ZeroOcc	AltConf
3	C	1	Total	C	O	0	0
			7	4	3		

- Molecule 4 is N-PROPANOL (CCD ID: POL) (formula:  $C_3H_8O$ ).



Mol	Chain	Residues	Atoms			ZeroOcc	AltConf
4	C	1	Total	C	O	0	0
			4	3	1		

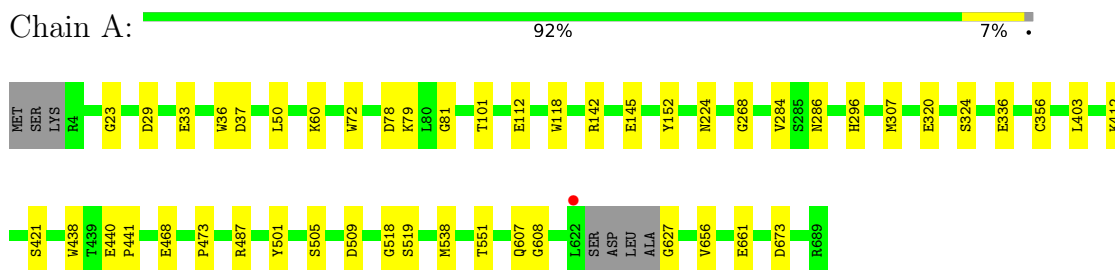
- Molecule 5 is water.

Mol	Chain	Residues	Atoms		ZeroOcc	AltConf
5	A	657	Total	O	0	0
			657	657		
5	B	676	Total	O	0	0
			676	676		
5	C	688	Total	O	0	0
			688	688		

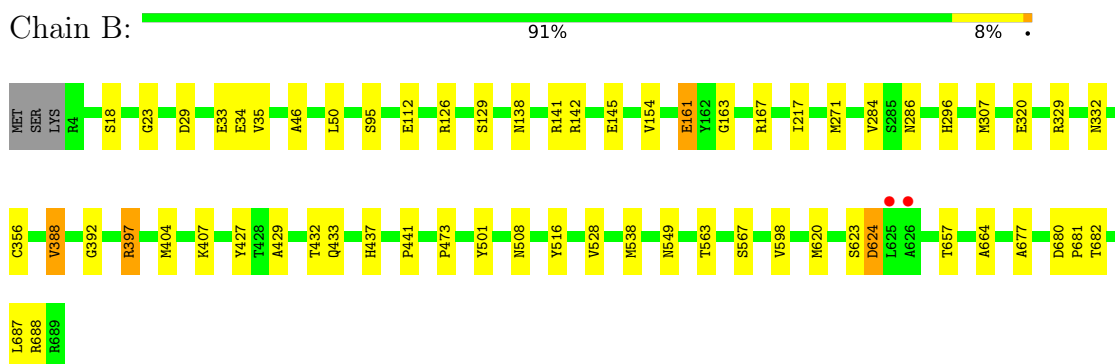
### 3 Residue-property plots [i](#)

These plots are drawn for all protein, RNA, DNA and oligosaccharide chains in the entry. The first graphic for a chain summarises the proportions of the various outlier classes displayed in the second graphic. The second graphic shows the sequence view annotated by issues in geometry and electron density. Residues are color-coded according to the number of geometric quality criteria for which they contain at least one outlier: green = 0, yellow = 1, orange = 2 and red = 3 or more. A red dot above a residue indicates a poor fit to the electron density ( $RSRZ > 2$ ). Stretches of 2 or more consecutive residues without any outlier are shown as a green connector. Residues present in the sample, but not in the model, are shown in grey.

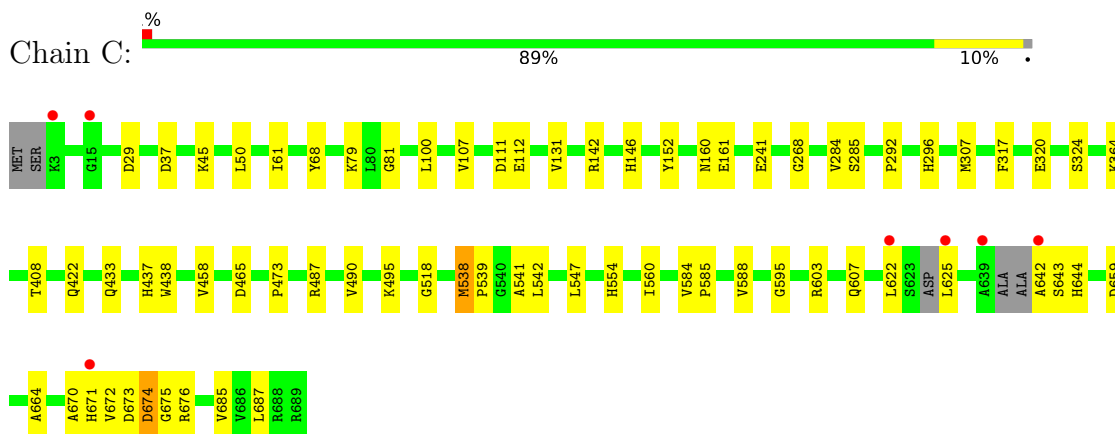
- Molecule 1: BETA-GALACTOSIDASE



- Molecule 1: BETA-GALACTOSIDASE



- Molecule 1: BETA-GALACTOSIDASE



## 4 Data and refinement statistics

Property	Value	Source
Space group	P 1 21 1	Depositor
Cell constants a, b, c, $\alpha$ , $\beta$ , $\gamma$	96.72Å 101.59Å 114.62Å 90.00° 105.40° 90.00°	Depositor
Resolution (Å)	110.51 – 1.94 110.51 – 1.94	Depositor EDS
% Data completeness (in resolution range)	97.0 (110.51-1.94) 97.0 (110.51-1.94)	Depositor EDS
$R_{merge}$	0.10	Depositor
$R_{sym}$	(Not available)	Depositor
$\langle I/\sigma(I) \rangle$ <sup>1</sup>	1.38 (at 1.94Å)	Xtrriage
Refinement program	REFMAC 5.8.007	Depositor
R, $R_{free}$	0.155 , 0.206 (Not available) , 0.182	Depositor DCC
$R_{free}$ test set	7688 reflections (5.02%)	wwPDB-VP
Wilson B-factor (Å <sup>2</sup> )	20.9	Xtrriage
Anisotropy	0.592	Xtrriage
Bulk solvent $k_{sol}$ (e/Å <sup>3</sup> ), $B_{sol}$ (Å <sup>2</sup> )	0.35 , 44.4	EDS
L-test for twinning <sup>2</sup>	$\langle  L  \rangle = 0.48$ , $\langle L^2 \rangle = 0.31$	Xtrriage
Estimated twinning fraction	No twinning to report.	Xtrriage
$F_o, F_c$ correlation	0.96	EDS
Total number of atoms	18271	wwPDB-VP
Average B, all atoms (Å <sup>2</sup> )	25.0	wwPDB-VP

Xtrriage's analysis on translational NCS is as follows: *The largest off-origin peak in the Patterson function is 3.07% of the height of the origin peak. No significant pseudotranslation is detected.*

<sup>1</sup>Intensities estimated from amplitudes.

<sup>2</sup>Theoretical values of  $\langle |L| \rangle$ ,  $\langle L^2 \rangle$  for acentric reflections are 0.5, 0.333 respectively for untwinned datasets, and 0.375, 0.2 for perfectly twinned datasets.

## 5 Model quality i

### 5.1 Standard geometry i

Bond lengths and bond angles in the following residue types are not validated in this section: PEG, GLA, POL

The Z score for a bond length (or angle) is the number of standard deviations the observed value is removed from the expected value. A bond length (or angle) with  $|Z| > 5$  is considered an outlier worth inspection. RMSZ is the root-mean-square of all Z scores of the bond lengths (or angles).

Mol	Chain	Bond lengths		Bond angles	
		RMSZ	# Z  >5	RMSZ	# Z  >5
1	A	1.07	1/5544 (0.0%)	1.04	5/7551 (0.1%)
1	B	1.10	1/5547 (0.0%)	1.07	4/7558 (0.1%)
1	C	1.18	2/5532 (0.0%)	1.11	9/7533 (0.1%)
All	All	1.12	4/16623 (0.0%)	1.07	18/22642 (0.1%)

All (4) bond length outliers are listed below:

Mol	Chain	Res	Type	Atoms	Z	Observed(Å)	Ideal(Å)
1	B	538	MET	C-O	-5.51	1.20	1.25
1	C	588	VAL	C-O	5.44	1.29	1.24
1	A	224	ASN	CA-C	5.19	1.59	1.52
1	C	268	GLY	C-N	-5.00	1.30	1.33

The worst 5 of 18 bond angle outliers are listed below:

Mol	Chain	Res	Type	Atoms	Z	Observed(°)	Ideal(°)
1	B	388	VAL	N-CA-CB	6.50	119.38	110.54
1	C	438	TRP	N-CA-C	6.48	119.16	111.71
1	C	408	THR	N-CA-C	-6.44	100.75	110.28
1	C	146	HIS	N-CA-C	6.23	118.15	111.36
1	B	154	VAL	N-CA-C	6.21	118.86	112.90

There are no chirality outliers.

There are no planarity outliers.

### 5.2 Too-close contacts i

In the following table, the Non-H and H(model) columns list the number of non-hydrogen atoms and hydrogen atoms in the chain respectively. The H(added) column lists the number of hydrogen

atoms added and optimized by MolProbity. The Clashes column lists the number of clashes within the asymmetric unit, whereas Symm-Clashes lists symmetry-related clashes.

Mol	Chain	Non-H	H(model)	H(added)	Clashes	Symm-Clashes
1	A	5383	0	5067	25	0
1	B	5391	0	5074	32	0
1	C	5381	0	5064	38	0
2	A	36	0	36	2	0
2	B	24	0	24	3	0
2	C	24	0	24	3	0
3	C	7	0	10	0	0
4	C	4	0	8	0	0
5	A	657	0	0	6	0
5	B	676	0	0	8	0
5	C	688	0	0	11	0
All	All	18271	0	15307	98	0

The all-atom clashscore is defined as the number of clashes found per 1000 atoms (including hydrogen atoms). The all-atom clashscore for this structure is 3.

The worst 5 of 98 close contacts within the same asymmetric unit are listed below, sorted by their clash magnitude.

Atom-1	Atom-2	Interatomic distance (Å)	Clash overlap (Å)
1:C:659:ASP:CB	5:C:939:HOH:O	1.84	1.22
1:B:112[B]:GLU:OE2	5:B:801:HOH:O	1.74	1.03
1:C:320:GLU:OE1	2:C:701:GLA:O1	1.76	1.01
1:C:112:GLU:OE1	5:C:801:HOH:O	1.77	1.00
2:A:702:GLA:H5	5:A:1343:HOH:O	1.65	0.94

There are no symmetry-related clashes.

## 5.3 Torsion angles [i](#)

### 5.3.1 Protein backbone [i](#)

In the following table, the Percentiles column shows the percent Ramachandran outliers of the chain as a percentile score with respect to all X-ray entries followed by that with respect to entries of similar resolution.

The Analysed column shows the number of residues for which the backbone conformation was analysed, and the total number of residues.

Mol	Chain	Analysed	Favoured	Allowed	Outliers	Percentiles	
1	A	681/689 (99%)	661 (97%)	18 (3%)	2 (0%)	36	30
1	B	685/689 (99%)	661 (96%)	22 (3%)	2 (0%)	36	30
1	C	678/689 (98%)	653 (96%)	22 (3%)	3 (0%)	30	22
All	All	2044/2067 (99%)	1975 (97%)	62 (3%)	7 (0%)	36	30

5 of 7 Ramachandran outliers are listed below:

Mol	Chain	Res	Type
1	B	161	GLU
1	A	473	PRO
1	A	324	SER
1	C	324	SER
1	C	674	ASP

### 5.3.2 Protein sidechains [i](#)

In the following table, the Percentiles column shows the percent sidechain outliers of the chain as a percentile score with respect to all X-ray entries followed by that with respect to entries of similar resolution.

The Analysed column shows the number of residues for which the sidechain conformation was analysed, and the total number of residues.

Mol	Chain	Analysed	Rotameric	Outliers	Percentiles	
1	A	557/566 (98%)	550 (99%)	7 (1%)	61	54
1	B	544/566 (96%)	531 (98%)	13 (2%)	43	31
1	C	554/566 (98%)	547 (99%)	7 (1%)	61	54
All	All	1655/1698 (98%)	1628 (98%)	27 (2%)	55	46

5 of 27 residues with a non-rotameric sidechain are listed below:

Mol	Chain	Res	Type
1	B	432	THR
1	B	624	ASP
1	C	644	HIS
1	B	501	TYR
1	B	682	THR

Sometimes sidechains can be flipped to improve hydrogen bonding and reduce clashes. 5 of 9 such sidechains are listed below:

Mol	Chain	Res	Type
1	C	359	GLN
1	C	383	GLN
1	B	27	ASN
1	B	359	GLN
1	B	433	GLN

### 5.3.3 RNA [i](#)

There are no RNA molecules in this entry.

### 5.4 Non-standard residues in protein, DNA, RNA chains [i](#)

There are no non-standard protein/DNA/RNA residues in this entry.

### 5.5 Carbohydrates [i](#)

There are no oligosaccharides in this entry.

### 5.6 Ligand geometry [i](#)

9 ligands are modelled in this entry.

In the following table, the Counts columns list the number of bonds (or angles) for which Mogul statistics could be retrieved, the number of bonds (or angles) that are observed in the model and the number of bonds (or angles) that are defined in the Chemical Component Dictionary. The Link column lists molecule types, if any, to which the group is linked. The Z score for a bond length (or angle) is the number of standard deviations the observed value is removed from the expected value. A bond length (or angle) with  $|Z| > 2$  is considered an outlier worth inspection. RMSZ is the root-mean-square of all Z scores of the bond lengths (or angles).

Mol	Type	Chain	Res	Link	Bond lengths			Bond angles		
					Counts	RMSZ	# Z  > 2	Counts	RMSZ	# Z  > 2
2	GLA	B	702	-	12,12,12	1.91	3 (25%)	17,17,17	1.80	5 (29%)
4	POL	C	704	-	3,3,3	0.44	0	2,2,2	0.12	0
2	GLA	C	702	-	12,12,12	1.34	1 (8%)	17,17,17	1.37	2 (11%)
3	PEG	C	703	-	6,6,6	0.23	0	5,5,5	0.91	0
2	GLA	B	701	-	12,12,12	0.88	0	17,17,17	1.13	1 (5%)
2	GLA	A	703	-	12,12,12	1.72	3 (25%)	17,17,17	1.82	4 (23%)
2	GLA	C	701	-	12,12,12	0.98	0	17,17,17	0.82	0
2	GLA	A	702	-	12,12,12	1.86	2 (16%)	17,17,17	2.57	7 (41%)
2	GLA	A	701	-	12,12,12	1.06	0	17,17,17	1.41	3 (17%)

In the following table, the Chirals column lists the number of chiral outliers, the number of chiral centers analysed, the number of these observed in the model and the number defined in the Chemical Component Dictionary. Similar counts are reported in the Torsion and Rings columns. '-' means no outliers of that kind were identified.

Mol	Type	Chain	Res	Link	Chirals	Torsions	Rings
2	GLA	B	702	-	-	2/2/22/22	0/1/1/1
4	POL	C	704	-	-	0/1/1/1	-
2	GLA	C	702	-	-	1/2/22/22	0/1/1/1
3	PEG	C	703	-	-	3/4/4/4	-
2	GLA	B	701	-	-	0/2/22/22	0/1/1/1
2	GLA	A	703	-	-	0/2/22/22	0/1/1/1
2	GLA	C	701	-	-	0/2/22/22	0/1/1/1
2	GLA	A	702	-	-	2/2/22/22	0/1/1/1
2	GLA	A	701	-	-	0/2/22/22	0/1/1/1

The worst 5 of 9 bond length outliers are listed below:

Mol	Chain	Res	Type	Atoms	Z	Observed(Å)	Ideal(Å)
2	A	702	GLA	O3-C3	5.18	1.55	1.43
2	B	702	GLA	O3-C3	4.84	1.54	1.43
2	A	703	GLA	O5-C1	3.24	1.50	1.42
2	C	702	GLA	O3-C3	2.95	1.50	1.43
2	B	702	GLA	O5-C1	2.78	1.49	1.42

The worst 5 of 22 bond angle outliers are listed below:

Mol	Chain	Res	Type	Atoms	Z	Observed(°)	Ideal(°)
2	A	702	GLA	O2-C2-C1	-7.45	92.06	109.25
2	A	703	GLA	C1-O5-C5	4.11	121.61	113.65
2	A	703	GLA	O5-C1-C2	3.63	116.68	110.30
2	B	702	GLA	O4-C4-C5	3.35	117.58	109.32
2	A	701	GLA	O1-C1-C2	3.16	118.15	108.98

There are no chirality outliers.

5 of 8 torsion outliers are listed below:

Mol	Chain	Res	Type	Atoms
2	B	702	GLA	O5-C5-C6-O6
2	A	702	GLA	O5-C5-C6-O6
2	A	702	GLA	C4-C5-C6-O6
2	B	702	GLA	C4-C5-C6-O6
2	C	702	GLA	O5-C5-C6-O6

There are no ring outliers.

6 monomers are involved in 8 short contacts:

Mol	Chain	Res	Type	Clashes	Symm-Clashes
2	B	702	GLA	1	0
2	C	702	GLA	2	0
2	B	701	GLA	2	0
2	C	701	GLA	1	0
2	A	702	GLA	1	0
2	A	701	GLA	1	0

## 5.7 Other polymers [i](#)

There are no such residues in this entry.

## 5.8 Polymer linkage issues [i](#)

There are no chain breaks in this entry.

## 6 Fit of model and data [i](#)

### 6.1 Protein, DNA and RNA chains [i](#)

In the following table, the column labelled ‘#RSRZ > 2’ contains the number (and percentage) of RSRZ outliers, followed by percent RSRZ outliers for the chain as percentile scores relative to all X-ray entries and entries of similar resolution. The OWAB column contains the minimum, median, 95<sup>th</sup> percentile and maximum values of the occupancy-weighted average B-factor per residue. The column labelled ‘Q < 0.9’ lists the number of (and percentage) of residues with an average occupancy less than 0.9.

Mol	Chain	Analysed	<RSRZ>	#RSRZ>2	OWAB(Å <sup>2</sup> )	Q<0.9
1	A	682/689 (98%)	-0.35	1 (0%) 92 94	15, 24, 41, 67	3 (0%)
1	B	686/689 (99%)	-0.33	2 (0%) 90 93	13, 23, 39, 80	1 (0%)
1	C	684/689 (99%)	-0.33	7 (1%) 79 84	14, 22, 39, 63	0
All	All	2052/2067 (99%)	-0.34	10 (0%) 87 91	13, 23, 40, 80	4 (0%)

The worst 5 of 10 RSRZ outliers are listed below:

Mol	Chain	Res	Type	RSRZ
1	C	639	ALA	5.2
1	B	626	ALA	3.5
1	C	642	ALA	2.9
1	C	3	LYS	2.8
1	B	625	LEU	2.8

### 6.2 Non-standard residues in protein, DNA, RNA chains [i](#)

There are no non-standard protein/DNA/RNA residues in this entry.

### 6.3 Carbohydrates [i](#)

There are no oligosaccharides in this entry.

### 6.4 Ligands [i](#)

In the following table, the Atoms column lists the number of modelled atoms in the group and the number defined in the chemical component dictionary. The B-factors column lists the minimum, median, 95<sup>th</sup> percentile and maximum values of B factors of atoms in the group. The column labelled ‘Q < 0.9’ lists the number of atoms with occupancy less than 0.9.

Mol	Type	Chain	Res	Atoms	RSCC	RSR	B-factors( $\text{\AA}^2$ )	Q<0.9
2	GLA	C	702	12/12	0.72	0.13	26,28,29,29	0
2	GLA	A	702	12/12	0.78	0.12	24,27,27,27	0
2	GLA	B	702	12/12	0.81	0.11	25,27,28,29	0
4	POL	C	704	4/4	0.83	0.15	42,44,44,47	0
2	GLA	A	703	12/12	0.87	0.08	24,26,28,30	0
3	PEG	C	703	7/7	0.91	0.10	44,45,48,48	0
2	GLA	C	701	12/12	0.95	0.06	18,19,22,23	0
2	GLA	A	701	12/12	0.96	0.05	19,20,22,22	0
2	GLA	B	701	12/12	0.97	0.05	18,21,22,23	0

## 6.5 Other polymers [i](#)

There are no such residues in this entry.