



# wwPDB X-ray Structure Validation Summary Report ⓘ

Mar 9, 2026 – 08:37 PM UTC

PDB ID : 4UDB / pdb\_00004udb  
Title : MR in complex with desisobutyrylciclesonide  
Authors : Edman, K.; Hogner, A.; Hussein, A.; Aagaard, A.; Backstrom, S.; Bodin, C.; Wissler, L.; JellesmarkJensen, T.; Cavallin, A.; Nilsson, E.; Lepisto, M.; Guallar, V.  
Deposited on : 2014-12-09  
Resolution : 2.36 Å(reported)

This is a wwPDB X-ray Structure Validation Summary Report for a publicly released PDB entry.

We welcome your comments at [validation@mail.wwpdb.org](mailto:validation@mail.wwpdb.org)

A user guide is available at

<https://www.wwpdb.org/validation/2017/XrayValidationReportHelp>

with specific help available everywhere you see the ⓘ symbol.

The types of validation reports are described at

<http://www.wwpdb.org/validation/2017/FAQs#types>.

---

The following versions of software and data (see [references ⓘ](#)) were used in the production of this report:

MolProbity : 4-5-2 with Phenix2.0  
Mogul : 2022.3.0, CSD as543be (2022)  
Xtriage (Phenix) : 2.0  
EDS : 3.0  
Buster-report : wwPDB partial adaption of 1.1.7 (2018)  
Percentile statistics : 20250101.v01 (using entries in the PDB archive January 1st 2025)  
CCP4 : 9.0.010 (Gargrove)  
Density-Fitness : 1.0.12  
Ideal geometry (proteins) : Engh & Huber (2001)  
Ideal geometry (DNA, RNA) : Parkinson et al. (1996)  
Validation Pipeline (wwPDB-VP) : 2.49

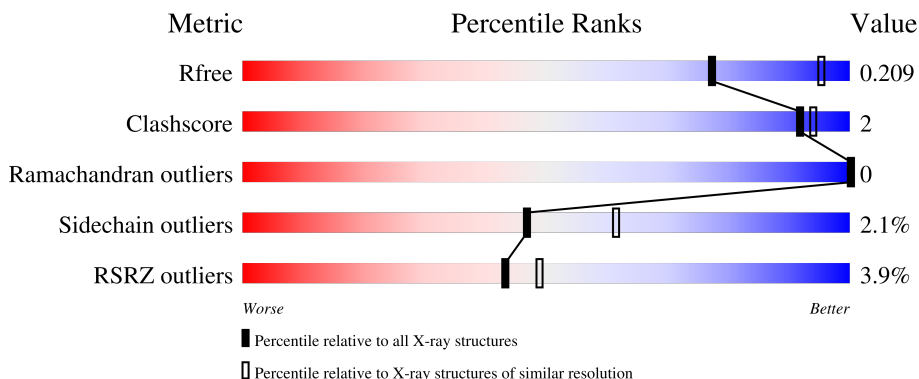
# 1 Overall quality at a glance

The following experimental techniques were used to determine the structure:

*X-RAY DIFFRACTION*

The reported resolution of this entry is 2.36 Å.

Percentile scores (ranging between 0-100) for global validation metrics of the entry are shown in the following graphic. The table shows the number of entries on which the scores are based.



Metric	Whole archive (#Entries)	Similar resolution (#Entries, resolution range(Å))
$R_{free}$	180053	1596 (2.36-2.36)
Clashscore	190562	1663 (2.36-2.36)
Ramachandran outliers	187476	1646 (2.36-2.36)
Sidechain outliers	187428	1646 (2.36-2.36)
RSRZ outliers	180081	1598 (2.36-2.36)

The table below summarises the geometric issues observed across the polymeric chains and their fit to the electron density. The red, orange, yellow and green segments of the lower bar indicate the fraction of residues that contain outliers for  $\geq 3$ , 2, 1 and 0 types of geometric quality criteria respectively. A grey segment represents the fraction of residues that are not modelled. The numeric value for each fraction is indicated below the corresponding segment, with a dot representing fractions  $\leq 5\%$ . The upper red bar (where present) indicates the fraction of residues that have poor fit to the electron density. The numeric value is given above the bar.

Mol	Chain	Length	Quality of chain
1	A	272	 3% 85% 5% 10%
2	B	15	 7% 73% 7% 20%

## 2 Entry composition

There are 7 unique types of molecules in this entry. The entry contains 2227 atoms, of which 0 are hydrogens and 0 are deuteriums.

In the tables below, the ZeroOcc column contains the number of atoms modelled with zero occupancy, the AltConf column contains the number of residues with at least one atom in alternate conformation and the Trace column contains the number of residues modelled with at most 2 atoms.

- Molecule 1 is a protein called MINERALOCORTICOID RECEPTOR.

Mol	Chain	Residues	Atoms					ZeroOcc	AltConf	Trace
			Total	C	N	O	S			
1	A	244	2018	1308	328	369	13	0	2	0

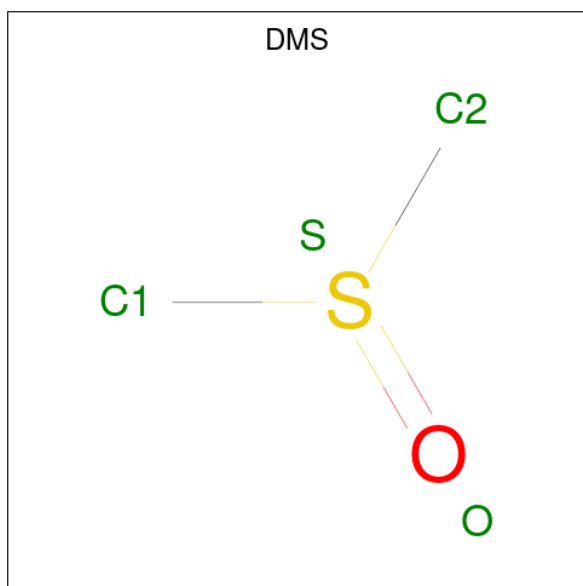
There are 25 discrepancies between the modelled and reference sequences:

Chain	Residue	Modelled	Actual	Comment	Reference
A	713	MET	-	expression tag	UNP P08235
A	714	HIS	-	expression tag	UNP P08235
A	715	ASN	-	expression tag	UNP P08235
A	716	HIS	-	expression tag	UNP P08235
A	717	ASN	-	expression tag	UNP P08235
A	718	HIS	-	expression tag	UNP P08235
A	719	ASN	-	expression tag	UNP P08235
A	720	HIS	-	expression tag	UNP P08235
A	721	ASN	-	expression tag	UNP P08235
A	722	HIS	-	expression tag	UNP P08235
A	723	ASN	-	expression tag	UNP P08235
A	724	HIS	-	expression tag	UNP P08235
A	725	ASN	-	expression tag	UNP P08235
A	726	GLY	-	expression tag	UNP P08235
A	727	GLY	-	expression tag	UNP P08235
A	728	GLU	-	expression tag	UNP P08235
A	729	ASN	-	expression tag	UNP P08235
A	730	LEU	-	expression tag	UNP P08235
A	731	TYR	-	expression tag	UNP P08235
A	732	PHE	-	expression tag	UNP P08235
A	733	GLN	-	expression tag	UNP P08235
A	734	GLY	-	expression tag	UNP P08235
A	808	SER	CYS	engineered mutation	UNP P08235
A	810	LEU	SER	engineered mutation	UNP P08235
A	910	SER	CYS	engineered mutation	UNP P08235

- Molecule 2 is a protein called NUCLEAR RECEPTOR COACTIVATOR 1.

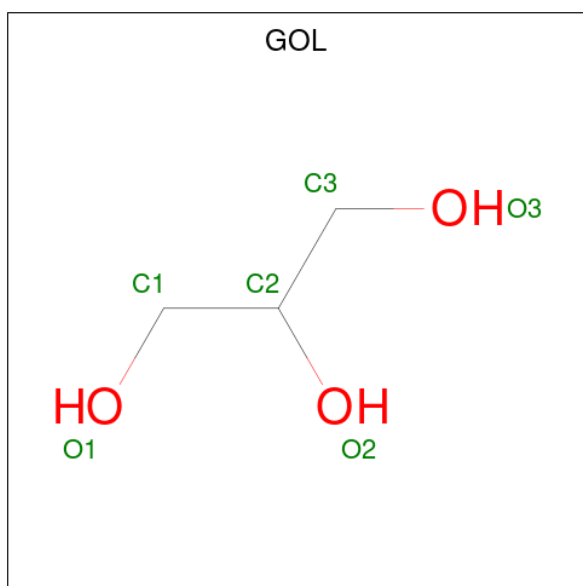
Mol	Chain	Residues	Atoms				ZeroOcc	AltConf	Trace
			Total	C	N	O			
2	B	12	100	62	17	21	0	0	0

- Molecule 3 is DIMETHYL SULFOXIDE (CCD ID: DMS) (formula: C<sub>2</sub>H<sub>6</sub>OS).



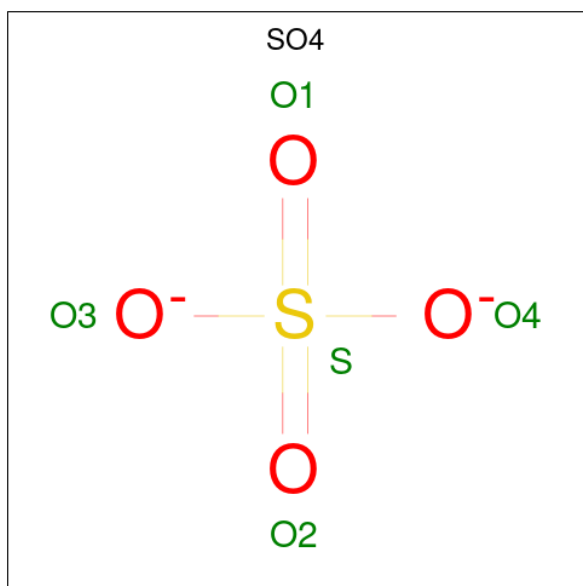
Mol	Chain	Residues	Atoms				ZeroOcc	AltConf
			Total	C	O	S		
3	A	1	4	2	1	1	0	0

- Molecule 4 is GLYCEROL (CCD ID: GOL) (formula: C<sub>3</sub>H<sub>8</sub>O<sub>3</sub>).



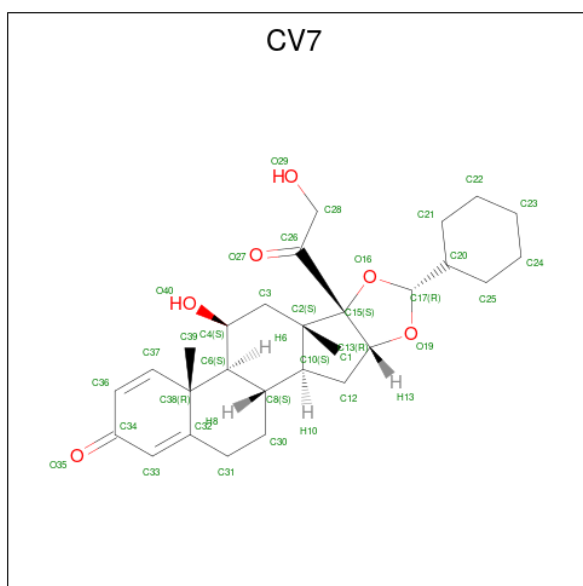
Mol	Chain	Residues	Atoms			ZeroOcc	AltConf
4	A	1	Total	C	O	0	0
			6	3	3		

- Molecule 5 is SULFATE ION (CCD ID: SO4) (formula: O<sub>4</sub>S).



Mol	Chain	Residues	Atoms			ZeroOcc	AltConf
5	A	1	Total	O	S	0	0
			5	4	1		

- Molecule 6 is DESISOBUTYRYL CICLESONIDE (CCD ID: CV7) (formula: C<sub>28</sub>H<sub>38</sub>O<sub>6</sub>).



Mol	Chain	Residues	Atoms			ZeroOcc	AltConf
6	A	1	Total	C	O	0	0
			34	28	6		

- Molecule 7 is water.

Mol	Chain	Residues	Atoms		ZeroOcc	AltConf
7	A	57	Total	O	0	0
			57	57		
7	B	3	Total	O	0	0
			3	3		



## 4 Data and refinement statistics

Property	Value	Source
Space group	P 41 21 2	Depositor
Cell constants a, b, c, $\alpha$ , $\beta$ , $\gamma$	75.92Å 75.92Å 117.00Å 90.00° 90.00° 90.00°	Depositor
Resolution (Å)	48.79 – 2.36 48.79 – 2.36	Depositor EDS
% Data completeness (in resolution range)	100.0 (48.79-2.36) 100.0 (48.79-2.36)	Depositor EDS
$R_{merge}$	0.13	Depositor
$R_{sym}$	(Not available)	Depositor
$\langle I/\sigma(I) \rangle$ <sup>1</sup>	1.69 (at 2.37Å)	Xtrriage
Refinement program	BUSTER 2.11.5	Depositor
R, $R_{free}$	0.182 , 0.218 0.175 , 0.209	Depositor DCC
$R_{free}$ test set	739 reflections (5.04%)	wwPDB-VP
Wilson B-factor (Å <sup>2</sup> )	45.8	Xtrriage
Anisotropy	0.014	Xtrriage
Bulk solvent $k_{sol}$ (e/Å <sup>3</sup> ), $B_{sol}$ (Å <sup>2</sup> )	0.38 , 46.8	EDS
L-test for twinning <sup>2</sup>	$\langle  L  \rangle = 0.48$ , $\langle L^2 \rangle = 0.31$	Xtrriage
Estimated twinning fraction	No twinning to report.	Xtrriage
$F_o, F_c$ correlation	0.96	EDS
Total number of atoms	2227	wwPDB-VP
Average B, all atoms (Å <sup>2</sup> )	53.0	wwPDB-VP

Xtrriage's analysis on translational NCS is as follows: *The largest off-origin peak in the Patterson function is 4.97% of the height of the origin peak. No significant pseudotranslation is detected.*

<sup>1</sup>Intensities estimated from amplitudes.

<sup>2</sup>Theoretical values of  $\langle |L| \rangle$ ,  $\langle L^2 \rangle$  for acentric reflections are 0.5, 0.333 respectively for untwinned datasets, and 0.375, 0.2 for perfectly twinned datasets.

## 5 Model quality

### 5.1 Standard geometry

Bond lengths and bond angles in the following residue types are not validated in this section: GOL, DMS, CV7, SO4

The Z score for a bond length (or angle) is the number of standard deviations the observed value is removed from the expected value. A bond length (or angle) with  $|Z| > 5$  is considered an outlier worth inspection. RMSZ is the root-mean-square of all Z scores of the bond lengths (or angles).

Mol	Chain	Bond lengths		Bond angles	
		RMSZ	# Z  >5	RMSZ	# Z  >5
1	A	0.81	0/2066	1.27	0/2792
2	B	0.86	0/99	1.22	0/130
All	All	0.82	0/2165	1.27	0/2922

There are no bond length outliers.

There are no bond angle outliers.

There are no chirality outliers.

There are no planarity outliers.

### 5.2 Too-close contacts

In the following table, the Non-H and H(model) columns list the number of non-hydrogen atoms and hydrogen atoms in the chain respectively. The H(added) column lists the number of hydrogen atoms added and optimized by MolProbity. The Clashes column lists the number of clashes within the asymmetric unit, whereas Symm-Clashes lists symmetry-related clashes.

Mol	Chain	Non-H	H(model)	H(added)	Clashes	Symm-Clashes
1	A	2018	0	2018	7	0
2	B	100	0	106	0	0
3	A	4	0	6	0	0
4	A	6	0	8	0	0
5	A	5	0	0	0	0
6	A	34	0	38	1	0
7	A	57	0	0	0	0
7	B	3	0	0	0	0
All	All	2227	0	2176	7	0

The all-atom clashscore is defined as the number of clashes found per 1000 atoms (including hydrogen atoms). The all-atom clashscore for this structure is 2.

The worst 5 of 7 close contacts within the same asymmetric unit are listed below, sorted by their clash magnitude.

Atom-1	Atom-2	Interatomic distance (Å)	Clash overlap (Å)
1:A:747:PRO:HB3	1:A:779[B]:GLN:HB3	1.89	0.55
1:A:793:LEU:HD11	1:A:895:MET:HE1	1.89	0.55
1:A:747:PRO:HB3	1:A:779[A]:GLN:HB3	1.97	0.47
1:A:908:THR:HA	1:A:917:SER:HB2	1.97	0.46
1:A:904:ARG:HD2	1:A:918:TRP:CH2	2.51	0.45

There are no symmetry-related clashes.

## 5.3 Torsion angles [i](#)

### 5.3.1 Protein backbone [i](#)

In the following table, the Percentiles column shows the percent Ramachandran outliers of the chain as a percentile score with respect to all X-ray entries followed by that with respect to entries of similar resolution.

The Analysed column shows the number of residues for which the backbone conformation was analysed, and the total number of residues.

Mol	Chain	Analysed	Favoured	Allowed	Outliers	Percentiles	
1	A	242/272 (89%)	237 (98%)	5 (2%)	0	100	100
2	B	10/15 (67%)	10 (100%)	0	0	100	100
All	All	252/287 (88%)	247 (98%)	5 (2%)	0	100	100

There are no Ramachandran outliers to report.

### 5.3.2 Protein sidechains [i](#)

In the following table, the Percentiles column shows the percent sidechain outliers of the chain as a percentile score with respect to all X-ray entries followed by that with respect to entries of similar resolution.

The Analysed column shows the number of residues for which the sidechain conformation was analysed, and the total number of residues.

Mol	Chain	Analysed	Rotameric	Outliers	Percentiles	
1	A	227/250 (91%)	223 (98%)	4 (2%)	51	66

*Continued on next page...*

*Continued from previous page...*

Mol	Chain	Analysed	Rotameric	Outliers	Percentiles	
2	B	12/14 (86%)	11 (92%)	1 (8%)	10	11
All	All	239/264 (90%)	234 (98%)	5 (2%)	47	61

All (5) residues with a non-rotameric sidechain are listed below:

Mol	Chain	Res	Type
1	A	838	GLU
1	A	871	ILE
1	A	936	SER
1	A	960	LEU
2	B	1430	GLN

Sometimes sidechains can be flipped to improve hydrogen bonding and reduce clashes. All (4) such sidechains are listed below:

Mol	Chain	Res	Type
1	A	823	ASN
1	A	836	ASN
1	A	898	ASN
1	A	912	ASN

### 5.3.3 RNA [i](#)

There are no RNA molecules in this entry.

## 5.4 Non-standard residues in protein, DNA, RNA chains [i](#)

There are no non-standard protein/DNA/RNA residues in this entry.

## 5.5 Carbohydrates [i](#)

There are no oligosaccharides in this entry.

## 5.6 Ligand geometry [i](#)

4 ligands are modelled in this entry.

In the following table, the Counts columns list the number of bonds (or angles) for which Mogul statistics could be retrieved, the number of bonds (or angles) that are observed in the model and

the number of bonds (or angles) that are defined in the Chemical Component Dictionary. The Link column lists molecule types, if any, to which the group is linked. The Z score for a bond length (or angle) is the number of standard deviations the observed value is removed from the expected value. A bond length (or angle) with  $|Z| > 2$  is considered an outlier worth inspection. RMSZ is the root-mean-square of all Z scores of the bond lengths (or angles).

Mol	Type	Chain	Res	Link	Bond lengths			Bond angles		
					Counts	RMSZ	# Z  > 2	Counts	RMSZ	# Z  > 2
3	DMS	A	1984	-	3,3,3	0.22	0	3,3,3	0.24	0
4	GOL	A	1985	-	5,5,5	0.19	0	5,5,5	0.95	1 (20%)
6	CV7	A	1987	-	38,39,39	0.85	1 (2%)	57,63,63	1.58	9 (15%)
5	SO4	A	1986	-	4,4,4	0.26	0	6,6,6	0.19	0

In the following table, the Chirals column lists the number of chiral outliers, the number of chiral centers analysed, the number of these observed in the model and the number defined in the Chemical Component Dictionary. Similar counts are reported in the Torsion and Rings columns. '-' means no outliers of that kind were identified.

Mol	Type	Chain	Res	Link	Chirals	Torsions	Rings
4	GOL	A	1985	-	-	0/4/4/4	-
6	CV7	A	1987	-	-	4/12/98/98	0/6/6/6

All (1) bond length outliers are listed below:

Mol	Chain	Res	Type	Atoms	Z	Observed(Å)	Ideal(Å)
6	A	1987	CV7	C38-C6	-3.61	1.55	1.58

The worst 5 of 10 bond angle outliers are listed below:

Mol	Chain	Res	Type	Atoms	Z	Observed(°)	Ideal(°)
6	A	1987	CV7	C37-C36-C34	-5.35	116.97	121.49
6	A	1987	CV7	O19-C17-O16	3.85	109.06	105.95
6	A	1987	CV7	C32-C33-C34	-3.65	119.40	122.72
6	A	1987	CV7	C36-C34-C33	3.28	120.44	117.12
6	A	1987	CV7	O16-C15-C2	2.45	112.55	110.26

There are no chirality outliers.

All (4) torsion outliers are listed below:

Mol	Chain	Res	Type	Atoms
6	A	1987	CV7	O16-C17-C20-C21
6	A	1987	CV7	O16-C17-C20-C25
6	A	1987	CV7	O19-C17-C20-C21

*Continued on next page...*

Continued from previous page...

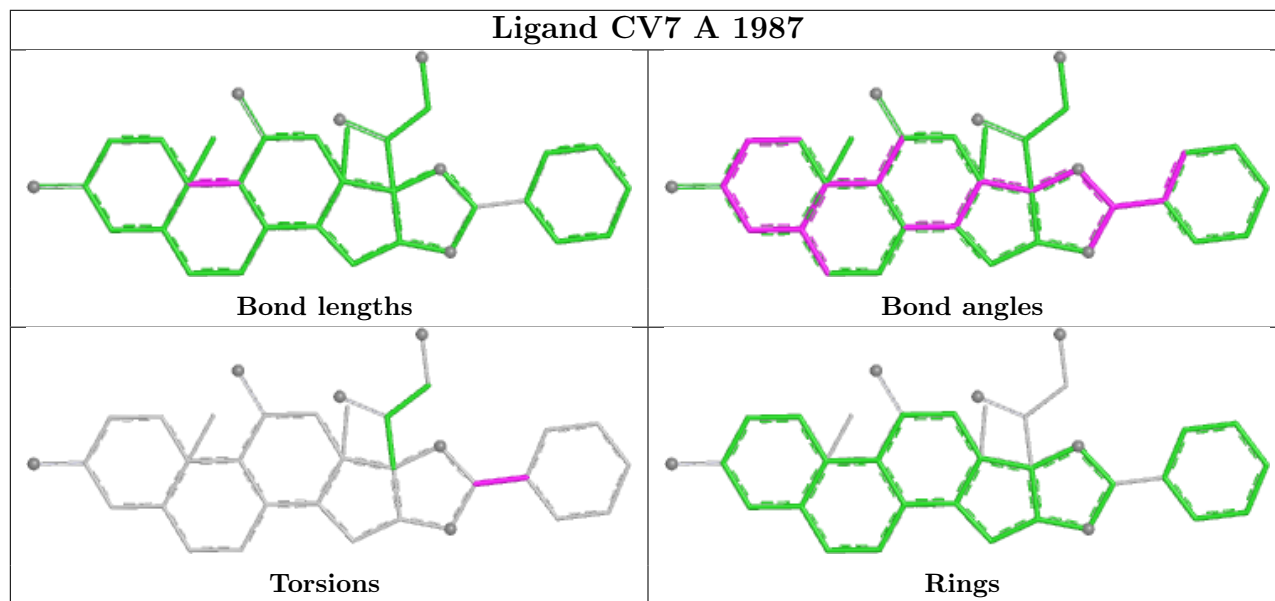
Mol	Chain	Res	Type	Atoms
6	A	1987	CV7	O19-C17-C20-C25

There are no ring outliers.

1 monomer is involved in 1 short contact:

Mol	Chain	Res	Type	Clashes	Symm-Clashes
6	A	1987	CV7	1	0

The following is a two-dimensional graphical depiction of Mogul quality analysis of bond lengths, bond angles, torsion angles, and ring geometry for all instances of the Ligand of Interest. In addition, ligands with molecular weight > 250 and outliers as shown on the validation Tables will also be included. For torsion angles, if less than 5% of the Mogul distribution of torsion angles is within 10 degrees of the torsion angle in question, then that torsion angle is considered an outlier. Any bond that is central to one or more torsion angles identified as an outlier by Mogul will be highlighted in the graph. For rings, the root-mean-square deviation (RMSD) between the ring in question and similar rings identified by Mogul is calculated over all ring torsion angles. If the average RMSD is greater than 60 degrees and the minimal RMSD between the ring in question and any Mogul-identified rings is also greater than 60 degrees, then that ring is considered an outlier. The outliers are highlighted in purple. The color gray indicates Mogul did not find sufficient equivalents in the CSD to analyse the geometry.



## 5.7 Other polymers [i](#)

There are no such residues in this entry.

## 5.8 Polymer linkage issues

There are no chain breaks in this entry.

## 6 Fit of model and data [i](#)

### 6.1 Protein, DNA and RNA chains [i](#)

In the following table, the column labelled ‘#RSRZ > 2’ contains the number (and percentage) of RSRZ outliers, followed by percent RSRZ outliers for the chain as percentile scores relative to all X-ray entries and entries of similar resolution. The OWAB column contains the minimum, median, 95<sup>th</sup> percentile and maximum values of the occupancy-weighted average B-factor per residue. The column labelled ‘Q < 0.9’ lists the number of (and percentage) of residues with an average occupancy less than 0.9.

Mol	Chain	Analysed	<RSRZ>	#RSRZ>2	OWAB(Å <sup>2</sup> )	Q<0.9
1	A	244/272 (89%)	0.12	9 (3%) 45 51	21, 49, 80, 129	2 (0%)
2	B	12/15 (80%)	0.55	1 (8%) 17 19	47, 54, 87, 92	0
All	All	256/287 (89%)	0.14	10 (3%) 43 49	21, 49, 81, 129	2 (0%)

The worst 5 of 10 RSRZ outliers are listed below:

Mol	Chain	Res	Type	RSRZ
1	A	754	TYR	4.0
1	A	759	PRO	3.9
1	A	755	ASP	3.2
2	B	1430	GLN	2.9
1	A	983	ARG	2.7

### 6.2 Non-standard residues in protein, DNA, RNA chains [i](#)

There are no non-standard protein/DNA/RNA residues in this entry.

### 6.3 Carbohydrates [i](#)

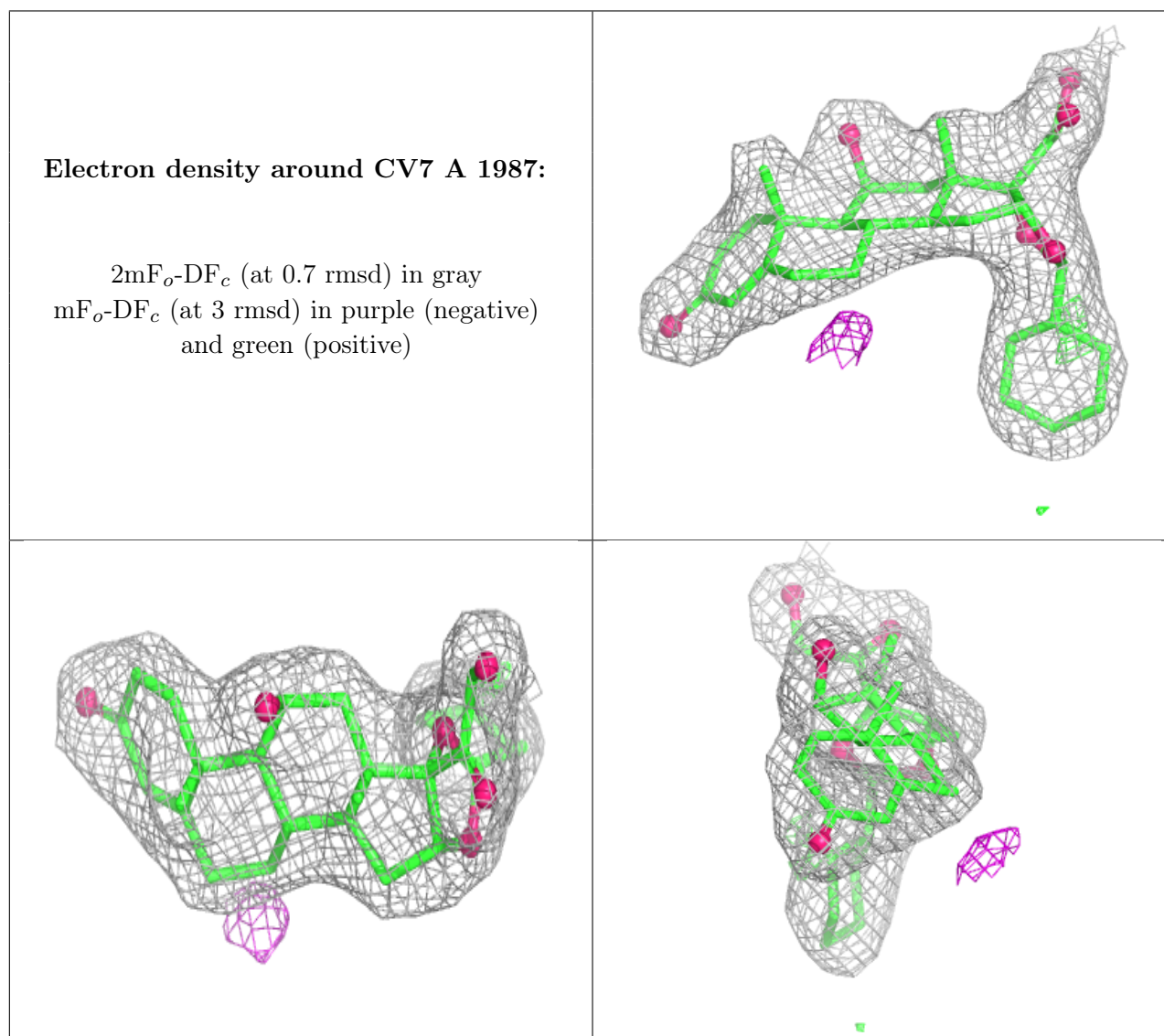
There are no oligosaccharides in this entry.

### 6.4 Ligands [i](#)

In the following table, the Atoms column lists the number of modelled atoms in the group and the number defined in the chemical component dictionary. The B-factors column lists the minimum, median, 95<sup>th</sup> percentile and maximum values of B factors of atoms in the group. The column labelled ‘Q < 0.9’ lists the number of atoms with occupancy less than 0.9.

Mol	Type	Chain	Res	Atoms	RSCC	RSR	B-factors( $\text{\AA}^2$ )	Q<0.9
3	DMS	A	1984	4/4	0.79	0.28	87,87,88,90	0
5	SO4	A	1986	5/5	0.90	0.14	126,127,127,128	0
4	GOL	A	1985	6/6	0.94	0.10	58,59,59,59	0
6	CV7	A	1987	34/34	0.96	0.08	33,41,56,57	0

The following is a graphical depiction of the model fit to experimental electron density of all instances of the Ligand of Interest. In addition, ligands with molecular weight > 250 and outliers as shown on the geometry validation Tables will also be included. Each fit is shown from different orientation to approximate a three-dimensional view.



## 6.5 Other polymers [\(i\)](#)

There are no such residues in this entry.