



wwPDB X-ray Structure Validation Summary Report ⓘ

Mar 9, 2026 – 10:17 AM UTC

PDB ID : 1UO4 / pdb_00001uo4
Title : Structure Based Engineering of Internal Molecular Surfaces Of Four Helix Bundles
Authors : Yadav, M.K.; Redman, J.E.; Alvarez-Gutierrez, J.M.; Zhang, Y.; Stout, C.D.; Ghadiri, M.R.
Deposited on : 2003-09-15
Resolution : 1.70 Å(reported)

This is a wwPDB X-ray Structure Validation Summary Report for a publicly released PDB entry.

We welcome your comments at validation@mail.wwpdb.org

A user guide is available at

<https://www.wwpdb.org/validation/2017/XrayValidationReportHelp>

with specific help available everywhere you see the ⓘ symbol.

The types of validation reports are described at

<http://www.wwpdb.org/validation/2017/FAQs#types>.

The following versions of software and data (see [references ⓘ](#)) were used in the production of this report:

MolProbity : 4-5-2 with Phenix2.0
Mogul : 2022.3.0, CSD as543be (2022)
Xtrriage (Phenix) : **NOT EXECUTED**
EDS : **NOT EXECUTED**
Percentile statistics : 20250101.v01 (using entries in the PDB archive January 1st 2025)
Ideal geometry (proteins) : Engh & Huber (2001)
Ideal geometry (DNA, RNA) : Parkinson et al. (1996)
Validation Pipeline (wwPDB-VP) : 2.49

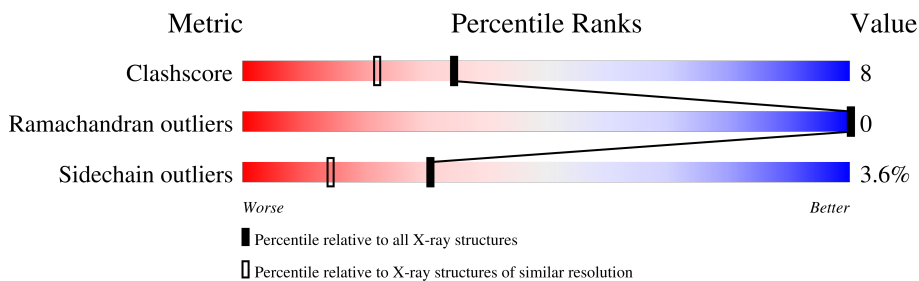
1 Overall quality at a glance

The following experimental techniques were used to determine the structure:

X-RAY DIFFRACTION

The reported resolution of this entry is 1.70 Å.

Percentile scores (ranging between 0-100) for global validation metrics of the entry are shown in the following graphic. The table shows the number of entries on which the scores are based.



Metric	Whole archive (#Entries)	Similar resolution (#Entries, resolution range(Å))
Clashscore	190562	5924 (1.70-1.70)
Ramachandran outliers	187476	5846 (1.70-1.70)
Sidechain outliers	187428	5846 (1.70-1.70)

The table below summarises the geometric issues observed across the polymeric chains and their fit to the electron density. The red, orange, yellow and green segments of the lower bar indicate the fraction of residues that contain outliers for ≥ 3 , 2, 1 and 0 types of geometric quality criteria respectively. A grey segment represents the fraction of residues that are not modelled. The numeric value for each fraction is indicated below the corresponding segment, with a dot representing fractions $\leq 5\%$

Note EDS was not executed.

Mol	Chain	Length	Quality of chain
1	A	34	
1	B	34	

The following table lists non-polymeric compounds, carbohydrate monomers and non-standard residues in protein, DNA, RNA chains that are outliers for geometric or electron-density-fit criteria:

Mol	Type	Chain	Res	Chirality	Geometry	Clashes	Electron density
3	PIH	B	1033	-	X	-	-

2 Entry composition [i](#)

There are 4 unique types of molecules in this entry. The entry contains 556 atoms, of which 0 are hydrogens and 0 are deuteriums.

In the tables below, the ZeroOcc column contains the number of atoms modelled with zero occupancy, the AltConf column contains the number of residues with at least one atom in alternate conformation and the Trace column contains the number of residues modelled with at most 2 atoms.

- Molecule 1 is a protein called GENERAL CONTROL PROTEIN GCN4.

Mol	Chain	Residues	Atoms					ZeroOcc	AltConf	Trace
			Total	C	N	O	S			
1	A	31	256	163	43	49	1	0	0	0
1	B	31	256	163	43	49	1	0	0	0

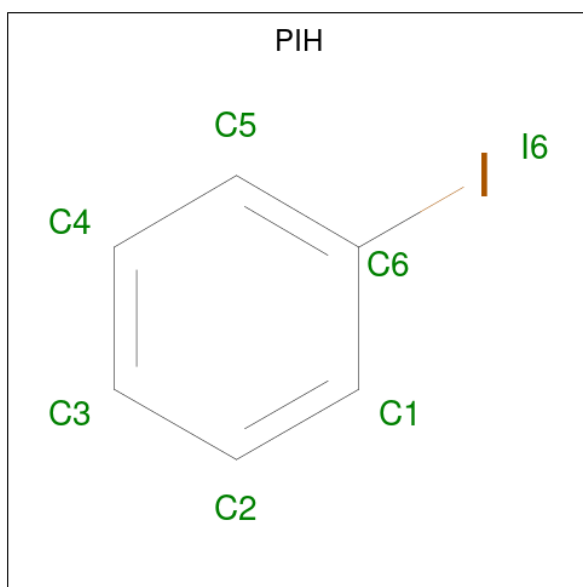
There are 16 discrepancies between the modelled and reference sequences:

Chain	Residue	Modelled	Actual	Comment	Reference
A	5	ILE	LEU	conflict	UNP P03069
A	9	GLY	VAL	engineered mutation	UNP P03069
A	12	ILE	LEU	conflict	UNP P03069
A	16	LEU	ASN	conflict	UNP P03069
A	19	ILE	LEU	conflict	UNP P03069
A	23	LEU	VAL	conflict	UNP P03069
A	26	ILE	LEU	conflict	UNP P03069
A	30	LEU	VAL	conflict	UNP P03069
B	5	ILE	LEU	conflict	UNP P03069
B	9	GLY	VAL	engineered mutation	UNP P03069
B	12	ILE	LEU	conflict	UNP P03069
B	16	LEU	ASN	conflict	UNP P03069
B	19	ILE	LEU	conflict	UNP P03069
B	23	LEU	VAL	conflict	UNP P03069
B	26	ILE	LEU	conflict	UNP P03069
B	30	LEU	VAL	conflict	UNP P03069

- Molecule 2 is CHLORIDE ION (CCD ID: CL) (formula: Cl).

Mol	Chain	Residues	Atoms		ZeroOcc	AltConf
2	A	1	Total	Cl	0	0
			1	1		

- Molecule 3 is iodobenzene (CCD ID: PIH) (formula: C₆H₅I).



Mol	Chain	Residues	Atoms	ZeroOcc	AltConf
3	B	1	Total C I 7 6 1	0	0

- Molecule 4 is water.

Mol	Chain	Residues	Atoms	ZeroOcc	AltConf
4	A	23	Total O 23 23	0	0
4	B	13	Total O 13 13	0	0

3 Residue-property plots [i](#)

These plots are drawn for all protein, RNA, DNA and oligosaccharide chains in the entry. The first graphic for a chain summarises the proportions of the various outlier classes displayed in the second graphic. The second graphic shows the sequence view annotated by issues in geometry. Residues are color-coded according to the number of geometric quality criteria for which they contain at least one outlier: green = 0, yellow = 1, orange = 2 and red = 3 or more. Stretches of 2 or more consecutive residues without any outlier are shown as a green connector. Residues present in the sample, but not in the model, are shown in grey.

Note EDS was not executed.

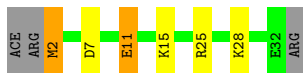
- Molecule 1: GENERAL CONTROL PROTEIN GCN4

Chain A: 



- Molecule 1: GENERAL CONTROL PROTEIN GCN4

Chain B: 



4 Data and refinement statistics

Xtrriage (Phenix) and EDS were not executed - this section is therefore incomplete.

Property	Value	Source
Space group	P 41 3 2	Depositor
Cell constants a, b, c, α , β , γ	79.11Å 79.11Å 79.11Å 90.00° 90.00° 90.00°	Depositor
Resolution (Å)	55.90 – 1.70	Depositor
% Data completeness (in resolution range)	99.8 (55.90-1.70)	Depositor
R_{merge}	0.08	Depositor
R_{sym}	(Not available)	Depositor
Refinement program	REFMAC	Depositor
R, R_{free}	0.223 , 0.257	Depositor
Estimated twinning fraction	No twinning to report.	Xtrriage
Total number of atoms	556	wwPDB-VP
Average B, all atoms (Å ²)	42.0	wwPDB-VP

5 Model quality [i](#)

5.1 Standard geometry [i](#)

Bond lengths and bond angles in the following residue types are not validated in this section: CL, PIH

The Z score for a bond length (or angle) is the number of standard deviations the observed value is removed from the expected value. A bond length (or angle) with $|Z| > 5$ is considered an outlier worth inspection. RMSZ is the root-mean-square of all Z scores of the bond lengths (or angles).

Mol	Chain	Bond lengths		Bond angles	
		RMSZ	# Z >5	RMSZ	# Z >5
1	A	1.57	1/257 (0.4%)	1.54	3/339 (0.9%)
1	B	1.90	3/257 (1.2%)	1.60	2/339 (0.6%)
All	All	1.75	4/514 (0.8%)	1.57	5/678 (0.7%)

All (4) bond length outliers are listed below:

Mol	Chain	Res	Type	Atoms	Z	Observed(Å)	Ideal(Å)
1	A	19	ILE	C-O	-5.72	1.17	1.24
1	B	28	LYS	N-CA	5.52	1.52	1.46
1	B	28	LYS	CD-CE	5.47	1.68	1.52
1	B	25	ARG	CA-CB	-5.01	1.45	1.53

All (5) bond angle outliers are listed below:

Mol	Chain	Res	Type	Atoms	Z	Observed(°)	Ideal(°)
1	B	15	LYS	CD-CE-NZ	-6.11	92.34	111.90
1	A	14	SER	N-CA-C	5.45	117.22	111.28
1	A	8	LYS	CA-C-N	5.18	125.85	119.99
1	A	8	LYS	C-N-CA	5.18	125.85	119.99
1	B	11	GLU	CB-CG-CD	-5.09	103.95	112.60

There are no chirality outliers.

There are no planarity outliers.

5.2 Too-close contacts [i](#)

In the following table, the Non-H and H(model) columns list the number of non-hydrogen atoms and hydrogen atoms in the chain respectively. The H(added) column lists the number of hydrogen atoms added and optimized by MolProbity. The Clashes column lists the number of clashes within

the asymmetric unit, whereas Symm-Clashes lists symmetry-related clashes.

Mol	Chain	Non-H	H(model)	H(added)	Clashes	Symm-Clashes
1	A	256	0	271	7	0
1	B	256	0	271	2	0
2	A	1	0	0	0	0
3	B	7	0	3	0	0
4	A	23	0	0	6	1
4	B	13	0	0	0	0
All	All	556	0	545	8	1

The all-atom clashscore is defined as the number of clashes found per 1000 atoms (including hydrogen atoms). The all-atom clashscore for this structure is 8.

The worst 5 of 8 close contacts within the same asymmetric unit are listed below, sorted by their clash magnitude.

Atom-1	Atom-2	Interatomic distance (Å)	Clash overlap (Å)
1:A:20:GLU:OE1	4:A:2012:HOH:O	2.01	0.77
1:A:6:GLU:HG2	4:A:2002:HOH:O	1.90	0.70
1:A:2:MET:HG2	1:B:2:MET:HE2	1.77	0.67
1:A:25:ARG:NH1	4:A:2019:HOH:O	2.35	0.55
1:B:7:ASP:O	1:B:11:GLU:HG3	2.16	0.46

All (1) symmetry-related close contacts are listed below. The label for Atom-2 includes the symmetry operator and encoded unit-cell translations to be applied.

Atom-1	Atom-2	Interatomic distance (Å)	Clash overlap (Å)
4:A:2009:HOH:O	4:A:2010:HOH:O[8_645]	2.13	0.07

5.3 Torsion angles [i](#)

5.3.1 Protein backbone [i](#)

In the following table, the Percentiles column shows the percent Ramachandran outliers of the chain as a percentile score with respect to all X-ray entries followed by that with respect to entries of similar resolution.

The Analysed column shows the number of residues for which the backbone conformation was analysed, and the total number of residues.

Continued on next page...

Continued from previous page...

Mol	Chain	Analysed	Favoured	Allowed	Outliers	Percentiles	
1	A	29/34 (85%)	29 (100%)	0	0	100	100
1	B	29/34 (85%)	29 (100%)	0	0	100	100
All	All	58/68 (85%)	58 (100%)	0	0	100	100

There are no Ramachandran outliers to report.

5.3.2 Protein sidechains [i](#)

In the following table, the Percentiles column shows the percent sidechain outliers of the chain as a percentile score with respect to all X-ray entries followed by that with respect to entries of similar resolution.

The Analysed column shows the number of residues for which the sidechain conformation was analysed, and the total number of residues.

Mol	Chain	Analysed	Rotameric	Outliers	Percentiles	
1	A	28/30 (93%)	27 (96%)	1 (4%)	31	14
1	B	28/30 (93%)	27 (96%)	1 (4%)	31	14
All	All	56/60 (93%)	54 (96%)	2 (4%)	31	14

All (2) residues with a non-rotameric sidechain are listed below:

Mol	Chain	Res	Type
1	A	32	GLU
1	B	2	MET

Sometimes sidechains can be flipped to improve hydrogen bonding and reduce clashes. All (1) such sidechains are listed below:

Mol	Chain	Res	Type
1	A	18	HIS

5.3.3 RNA [i](#)

There are no RNA molecules in this entry.

5.4 Non-standard residues in protein, DNA, RNA chains [i](#)

There are no non-standard protein/DNA/RNA residues in this entry.

5.5 Carbohydrates [i](#)

There are no oligosaccharides in this entry.

5.6 Ligand geometry [i](#)

Of 2 ligands modelled in this entry, 1 is monoatomic - leaving 1 for Mogul analysis.

In the following table, the Counts columns list the number of bonds (or angles) for which Mogul statistics could be retrieved, the number of bonds (or angles) that are observed in the model and the number of bonds (or angles) that are defined in the Chemical Component Dictionary. The Link column lists molecule types, if any, to which the group is linked. The Z score for a bond length (or angle) is the number of standard deviations the observed value is removed from the expected value. A bond length (or angle) with $|Z| > 2$ is considered an outlier worth inspection. RMSZ is the root-mean-square of all Z scores of the bond lengths (or angles).

Mol	Type	Chain	Res	Link	Bond lengths			Bond angles		
					Counts	RMSZ	$\# Z > 2$	Counts	RMSZ	$\# Z > 2$
3	PIH	B	1033	-	7,7,7	7.39	4 (57%)	8,8,8	7.29	6 (75%)

In the following table, the Chirals column lists the number of chiral outliers, the number of chiral centers analysed, the number of these observed in the model and the number defined in the Chemical Component Dictionary. Similar counts are reported in the Torsion and Rings columns. '-' means no outliers of that kind were identified.

Mol	Type	Chain	Res	Link	Chirals	Torsions	Rings
3	PIH	B	1033	-	-	-	0/1/1/1

All (4) bond length outliers are listed below:

Mol	Chain	Res	Type	Atoms	Z	Observed(Å)	Ideal(Å)
3	B	1033	PIH	C4-C5	-16.04	1.11	1.38
3	B	1033	PIH	C4-C3	-7.79	1.21	1.38
3	B	1033	PIH	C5-C6	-7.30	1.22	1.38
3	B	1033	PIH	C6-I6	-2.95	2.02	2.10

The worst 5 of 6 bond angle outliers are listed below:

Mol	Chain	Res	Type	Atoms	Z	Observed(°)	Ideal(°)
3	B	1033	PIH	C3-C4-C5	10.57	133.28	120.24
3	B	1033	PIH	C4-C5-C6	9.89	131.37	118.97
3	B	1033	PIH	C5-C6-C1	-9.65	107.89	120.64
3	B	1033	PIH	C4-C3-C2	-9.17	107.32	119.87
3	B	1033	PIH	C5-C6-I6	4.94	127.06	119.69

There are no chirality outliers.

There are no torsion outliers.

There are no ring outliers.

No monomer is involved in short contacts.

5.7 Other polymers [i](#)

There are no such residues in this entry.

5.8 Polymer linkage issues [i](#)

There are no chain breaks in this entry.

6 Fit of model and data [i](#)

6.1 Protein, DNA and RNA chains [i](#)

EDS was not executed - this section is therefore empty.

6.2 Non-standard residues in protein, DNA, RNA chains [i](#)

EDS was not executed - this section is therefore empty.

6.3 Carbohydrates [i](#)

EDS was not executed - this section is therefore empty.

6.4 Ligands [i](#)

EDS was not executed - this section is therefore empty.

6.5 Other polymers [i](#)

EDS was not executed - this section is therefore empty.