



wwPDB X-ray Structure Validation Summary Report ⓘ

Mar 15, 2026 – 03:05 AM UTC

PDB ID : 8USJ / pdb_00008usj
Title : Crystal Structure of Kemp Eliminase HG198 with bound transition state analogue, 280 K
Authors : Seifinoferest, B.
Deposited on : 2023-10-27
Resolution : 1.60 Å(reported)

This is a wwPDB X-ray Structure Validation Summary Report for a publicly released PDB entry.

We welcome your comments at validation@mail.wwpdb.org

A user guide is available at

<https://www.wwpdb.org/validation/2017/XrayValidationReportHelp>

with specific help available everywhere you see the ⓘ symbol.

The types of validation reports are described at

<http://www.wwpdb.org/validation/2017/FAQs#types>.

The following versions of software and data (see [references ⓘ](#)) were used in the production of this report:

MolProbity : 4-5-2 with Phenix2.0
Mogul : 2022.3.0, CSD as543be (2022)
Xtrriage (Phenix) : 2.0
EDS : 3.0
Buster-report : wwPDB partial adaption of 1.1.7 (2018)
Percentile statistics : 20250101.v01 (using entries in the PDB archive January 1st 2025)
CCP4 : 9.0.010 (Gargrove)
Density-Fitness : 1.0.12
Ideal geometry (proteins) : Engh & Huber (2001)
Ideal geometry (DNA, RNA) : Parkinson et al. (1996)
Validation Pipeline (wwPDB-VP) : 2.49

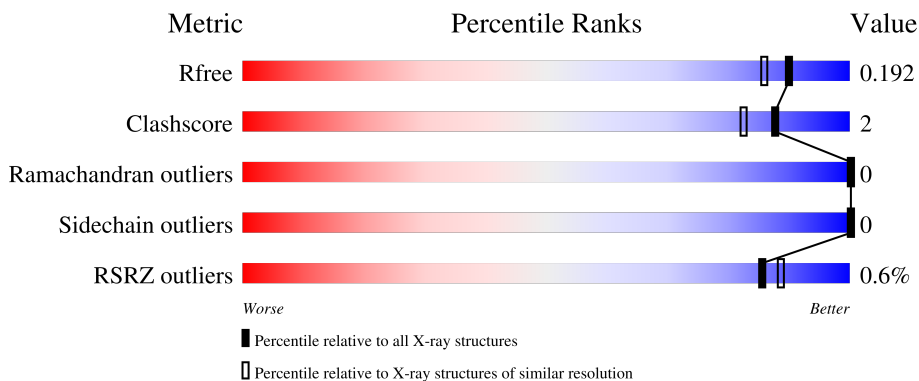
1 Overall quality at a glance

The following experimental techniques were used to determine the structure:

X-RAY DIFFRACTION

The reported resolution of this entry is 1.60 Å.

Percentile scores (ranging between 0-100) for global validation metrics of the entry are shown in the following graphic. The table shows the number of entries on which the scores are based.



Metric	Whole archive (#Entries)	Similar resolution (#Entries, resolution range(Å))
R_{free}	180053	4673 (1.60-1.60)
Clashscore	190562	4931 (1.60-1.60)
Ramachandran outliers	187476	4831 (1.60-1.60)
Sidechain outliers	187428	4830 (1.60-1.60)
RSRZ outliers	180081	4672 (1.60-1.60)

The table below summarises the geometric issues observed across the polymeric chains and their fit to the electron density. The red, orange, yellow and green segments of the lower bar indicate the fraction of residues that contain outliers for ≥ 3 , 2, 1 and 0 types of geometric quality criteria respectively. A grey segment represents the fraction of residues that are not modelled. The numeric value for each fraction is indicated below the corresponding segment, with a dot representing fractions $\leq 5\%$. The upper red bar (where present) indicates the fraction of residues that have poor fit to the electron density. The numeric value is given above the bar.

Mol	Chain	Length	Quality of chain
1	A	317	 88% 7% 5%
1	B	317	 % 93% • 5%
1	C	317	 % 91% • 5%

2 Entry composition [i](#)

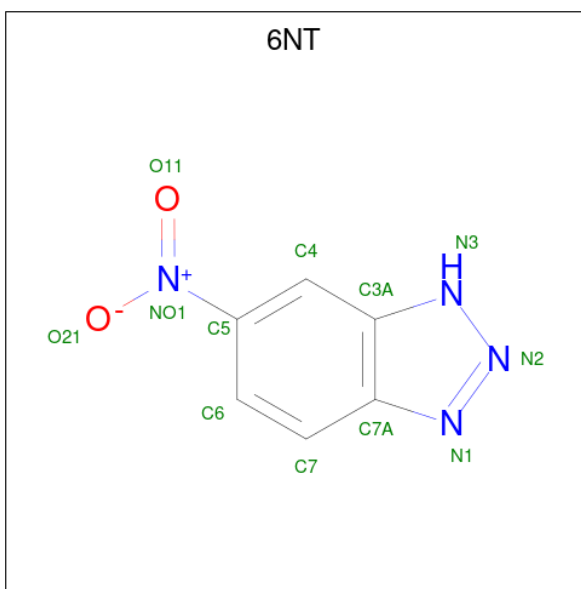
There are 3 unique types of molecules in this entry. The entry contains 15804 atoms, of which 7459 are hydrogens and 0 are deuteriums.

In the tables below, the ZeroOcc column contains the number of atoms modelled with zero occupancy, the AltConf column contains the number of residues with at least one atom in alternate conformation and the Trace column contains the number of residues modelled with at most 2 atoms.

- Molecule 1 is a protein called Kemp eliminase.

Mol	Chain	Residues	Atoms					ZeroOcc	AltConf	Trace	
			Total	C	H	N	O				S
1	A	300	Total 5030	C 1588	H 2511	N 435	O 484	S 12	0	59	0
1	B	301	Total 4864	C 1541	H 2414	N 422	O 475	S 12	0	39	0
1	C	300	Total 5042	C 1589	H 2522	N 436	O 483	S 12	20	60	0

- Molecule 2 is 6-NITROBENZOTRIAZOLE (CCD ID: 6NT) (formula: C₆H₄N₄O₂) (labeled as "Ligand of Interest" by depositor).



Mol	Chain	Residues	Atoms				ZeroOcc	AltConf	
			Total	C	H	N			O
2	A	1	Total 16	C 6	H 4	N 4	O 2	0	0
2	B	1	Total 16	C 6	H 4	N 4	O 2	0	0
2	C	1	Total 16	C 6	H 4	N 4	O 2	0	0

- Molecule 3 is water.

Mol	Chain	Residues	Atoms		ZeroOcc	AltConf
3	A	233	Total 233	O 233	0	0
3	B	285	Total 285	O 285	0	0
3	C	302	Total 302	O 302	0	3

4 Data and refinement statistics

Property	Value	Source
Space group	P 1	Depositor
Cell constants a, b, c, α , β , γ	46.65Å 51.03Å 86.30Å 83.58° 81.12° 87.01°	Depositor
Resolution (Å)	50.68 – 1.60 50.68 – 1.60	Depositor EDS
% Data completeness (in resolution range)	94.3 (50.68-1.60) 94.3 (50.68-1.60)	Depositor EDS
R_{merge}	0.12	Depositor
R_{sym}	(Not available)	Depositor
$\langle I/\sigma(I) \rangle$ ¹	1.98 (at 1.60Å)	Xtrriage
Refinement program	PHENIX v1.13.2998	Depositor
R, R_{free}	0.154 , 0.190 0.156 , 0.192	Depositor DCC
R_{free} test set	4797 reflections (4.94%)	wwPDB-VP
Wilson B-factor (Å ²)	12.1	Xtrriage
Anisotropy	0.041	Xtrriage
Bulk solvent k_{sol} (e/Å ³), B_{sol} (Å ²)	0.38 , 39.7	EDS
L-test for twinning ²	$\langle L \rangle = 0.51$, $\langle L^2 \rangle = 0.34$	Xtrriage
Estimated twinning fraction	No twinning to report.	Xtrriage
F_o, F_c correlation	0.97	EDS
Total number of atoms	15804	wwPDB-VP
Average B, all atoms (Å ²)	16.0	wwPDB-VP

Xtrriage's analysis on translational NCS is as follows: *The largest off-origin peak in the Patterson function is 5.79% of the height of the origin peak. No significant pseudotranslation is detected.*

¹Intensities estimated from amplitudes.

²Theoretical values of $\langle |L| \rangle$, $\langle L^2 \rangle$ for acentric reflections are 0.5, 0.333 respectively for untwinned datasets, and 0.375, 0.2 for perfectly twinned datasets.

5 Model quality

5.1 Standard geometry

Bond lengths and bond angles in the following residue types are not validated in this section: 6NT

The Z score for a bond length (or angle) is the number of standard deviations the observed value is removed from the expected value. A bond length (or angle) with $|Z| > 5$ is considered an outlier worth inspection. RMSZ is the root-mean-square of all Z scores of the bond lengths (or angles).

Mol	Chain	Bond lengths		Bond angles	
		RMSZ	# Z >5	RMSZ	# Z >5
1	A	0.16	0/2807	0.38	0/3831
1	B	0.18	0/2663	0.42	0/3634
1	C	0.17	0/2806	0.41	0/3822
All	All	0.17	0/8276	0.41	0/11287

There are no bond length outliers.

There are no bond angle outliers.

There are no chirality outliers.

There are no planarity outliers.

5.2 Too-close contacts

In the following table, the Non-H and H(model) columns list the number of non-hydrogen atoms and hydrogen atoms in the chain respectively. The H(added) column lists the number of hydrogen atoms added and optimized by MolProbity. The Clashes column lists the number of clashes within the asymmetric unit, whereas Symm-Clashes lists symmetry-related clashes.

Mol	Chain	Non-H	H(model)	H(added)	Clashes	Symm-Clashes
1	A	2519	2511	2269	15	1
1	B	2450	2414	2257	7	0
1	C	2520	2522	2273	9	0
2	A	12	4	4	1	0
2	B	12	4	4	0	0
2	C	12	4	4	0	0
3	A	233	0	0	3	3
3	B	285	0	0	4	2
3	C	302	0	0	2	3
All	All	8345	7459	6811	30	8

The all-atom clashscore is defined as the number of clashes found per 1000 atoms (including hydrogen atoms). The all-atom clashscore for this structure is 2.

The worst 5 of 30 close contacts within the same asymmetric unit are listed below, sorted by their clash magnitude.

Atom-1	Atom-2	Interatomic distance (Å)	Clash overlap (Å)
1:A:46:GLU:OE1	3:A:501:HOH:O	2.07	0.73
1:B:189:ASN:OD1	3:B:501:HOH:O	2.06	0.72
1:C:74[B]:GLN:NE2	3:C:501:HOH:O	2.20	0.72
1:C:86[B]:VAL:CG1	1:C:129:VAL:HG22	2.30	0.61
1:C:37:GLN:OE1	1:C:76:ASN:ND2	2.34	0.60

The worst 5 of 8 symmetry-related close contacts are listed below. The label for Atom-2 includes the symmetry operator and encoded unit-cell translations to be applied.

Atom-1	Atom-2	Interatomic distance (Å)	Clash overlap (Å)
3:A:510:HOH:O	3:A:705:HOH:O[1_655]	2.03	0.17
3:A:510:HOH:O	3:A:546:HOH:O[1_655]	2.08	0.12
3:C:515:HOH:O	3:C:534:HOH:O[1_655]	2.08	0.12
3:B:680:HOH:O	3:B:753:HOH:O[1_655]	2.11	0.09
3:B:512:HOH:O	3:B:653:HOH:O[1_565]	2.14	0.06

5.3 Torsion angles [i](#)

5.3.1 Protein backbone [i](#)

In the following table, the Percentiles column shows the percent Ramachandran outliers of the chain as a percentile score with respect to all X-ray entries followed by that with respect to entries of similar resolution.

The Analysed column shows the number of residues for which the backbone conformation was analysed, and the total number of residues.

Mol	Chain	Analysed	Favoured	Allowed	Outliers	Percentiles	
1	A	356/317 (112%)	349 (98%)	7 (2%)	0	100	100
1	B	338/317 (107%)	332 (98%)	6 (2%)	0	100	100
1	C	357/317 (113%)	350 (98%)	7 (2%)	0	100	100
All	All	1051/951 (110%)	1031 (98%)	20 (2%)	0	100	100

There are no Ramachandran outliers to report.

5.3.2 Protein sidechains [i](#)

In the following table, the Percentiles column shows the percent sidechain outliers of the chain as a percentile score with respect to all X-ray entries followed by that with respect to entries of similar resolution.

The Analysed column shows the number of residues for which the sidechain conformation was analysed, and the total number of residues.

Mol	Chain	Analysed	Rotameric	Outliers	Percentiles	
1	A	297/255 (116%)	297 (100%)	0	100	100
1	B	281/255 (110%)	281 (100%)	0	100	100
1	C	296/255 (116%)	296 (100%)	0	100	100
All	All	874/765 (114%)	874 (100%)	0	100	100

There are no protein residues with a non-rotameric sidechain to report.

Sometimes sidechains can be flipped to improve hydrogen bonding and reduce clashes. All (3) such sidechains are listed below:

Mol	Chain	Res	Type
1	A	141	GLN
1	B	47	ASN
1	B	75	GLN

5.3.3 RNA [i](#)

There are no RNA molecules in this entry.

5.4 Non-standard residues in protein, DNA, RNA chains [i](#)

There are no non-standard protein/DNA/RNA residues in this entry.

5.5 Carbohydrates [i](#)

There are no oligosaccharides in this entry.

5.6 Ligand geometry [i](#)

3 ligands are modelled in this entry.

In the following table, the Counts columns list the number of bonds (or angles) for which Mogul statistics could be retrieved, the number of bonds (or angles) that are observed in the model and the number of bonds (or angles) that are defined in the Chemical Component Dictionary. The Link column lists molecule types, if any, to which the group is linked. The Z score for a bond length (or angle) is the number of standard deviations the observed value is removed from the expected value. A bond length (or angle) with $|Z| > 2$ is considered an outlier worth inspection. RMSZ is the root-mean-square of all Z scores of the bond lengths (or angles).

Mol	Type	Chain	Res	Link	Bond lengths			Bond angles		
					Counts	RMSZ	# Z > 2	Counts	RMSZ	# Z > 2
2	6NT	A	401	-	13,13,13	1.30	3 (23%)	16,18,18	1.04	1 (6%)
2	6NT	B	401	-	13,13,13	1.32	3 (23%)	16,18,18	0.84	0
2	6NT	C	401	-	13,13,13	1.33	3 (23%)	16,18,18	0.83	0

In the following table, the Chirals column lists the number of chiral outliers, the number of chiral centers analysed, the number of these observed in the model and the number defined in the Chemical Component Dictionary. Similar counts are reported in the Torsion and Rings columns. '-' means no outliers of that kind were identified.

Mol	Type	Chain	Res	Link	Chirals	Torsions	Rings
2	6NT	A	401	-	-	0/2/4/4	0/2/2/2
2	6NT	B	401	-	-	0/2/4/4	0/2/2/2
2	6NT	C	401	-	-	0/2/4/4	0/2/2/2

The worst 5 of 9 bond length outliers are listed below:

Mol	Chain	Res	Type	Atoms	Z	Observed(Å)	Ideal(Å)
2	B	401	6NT	O11-NO1	-2.85	1.17	1.22
2	A	401	6NT	O11-NO1	-2.84	1.17	1.22
2	C	401	6NT	O11-NO1	-2.80	1.18	1.22
2	C	401	6NT	C7A-N1	-2.42	1.34	1.38
2	B	401	6NT	C7A-N1	-2.40	1.34	1.38

All (1) bond angle outliers are listed below:

Mol	Chain	Res	Type	Atoms	Z	Observed(°)	Ideal(°)
2	A	401	6NT	C6-C5-NO1	3.29	122.21	119.34

There are no chirality outliers.

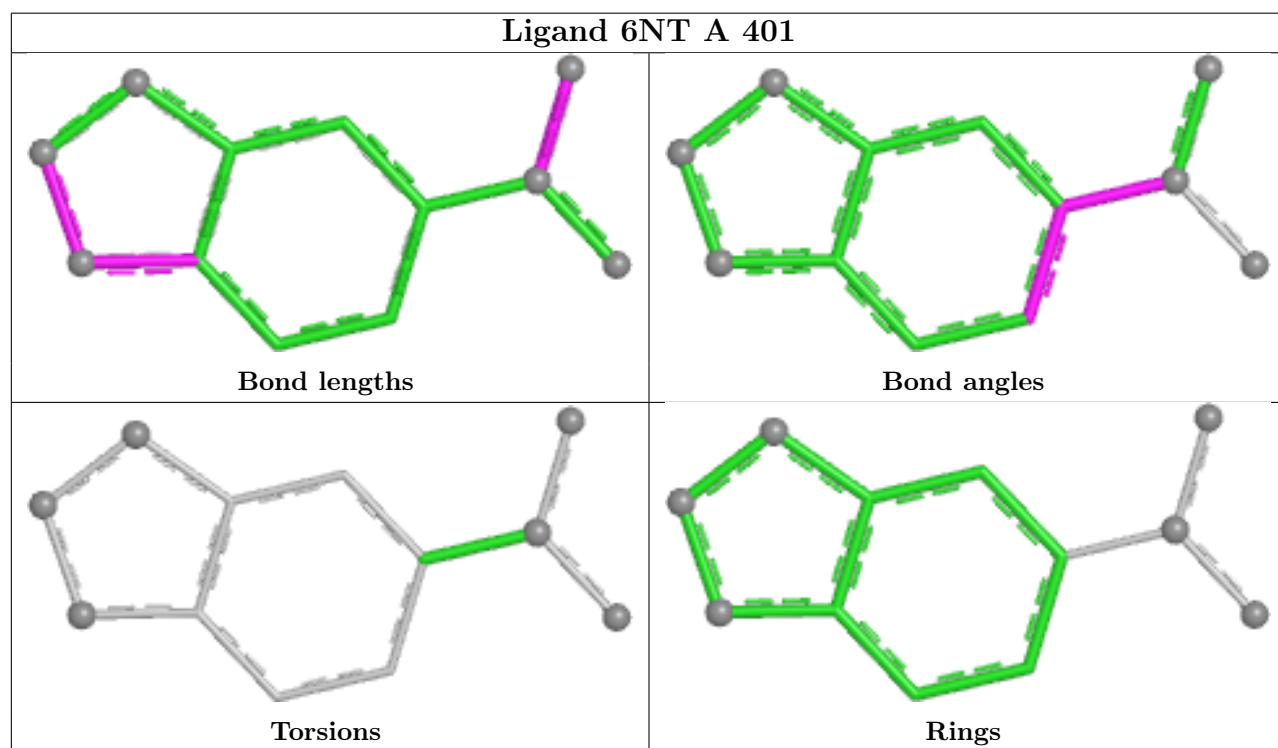
There are no torsion outliers.

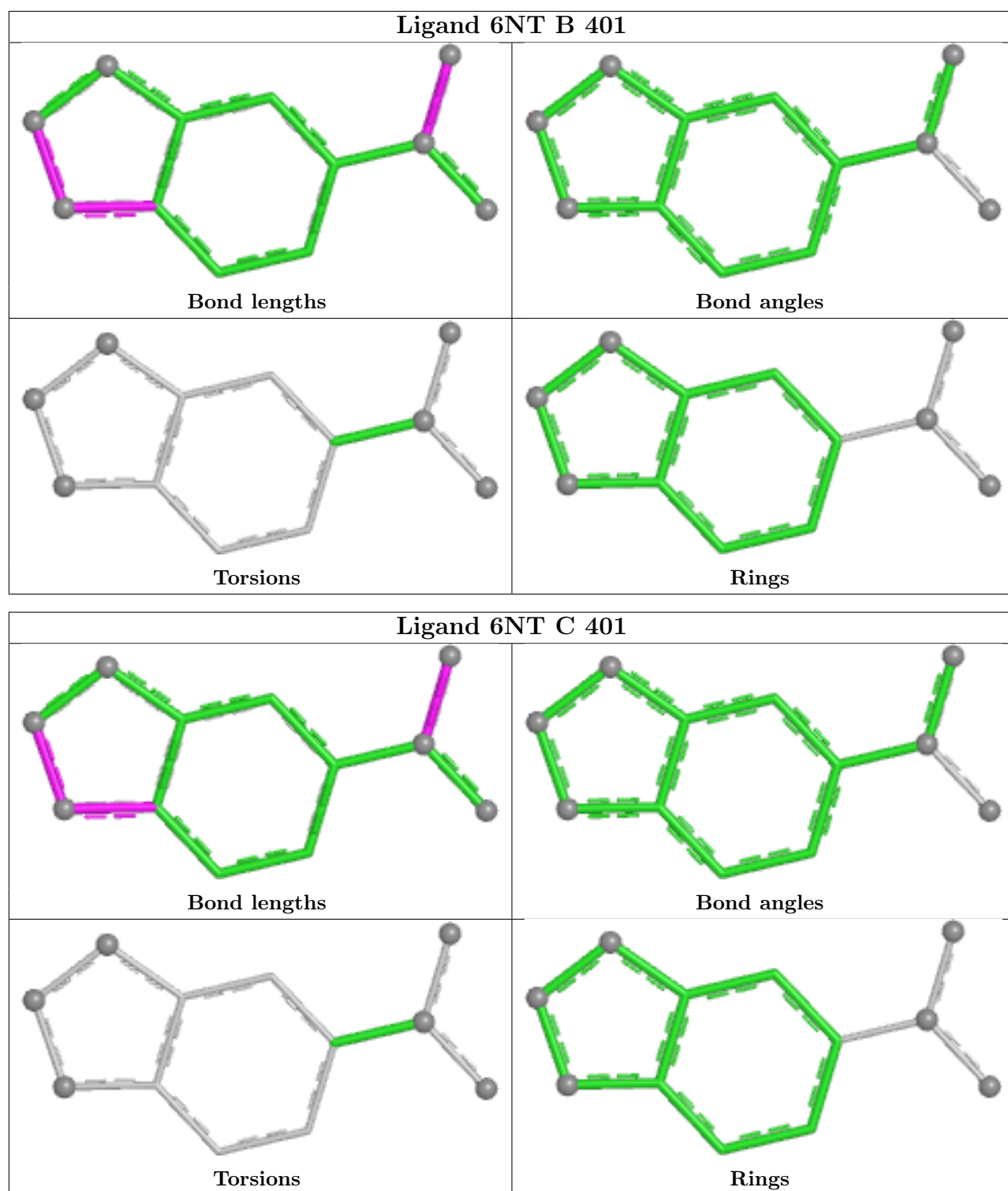
There are no ring outliers.

1 monomer is involved in 1 short contact:

Mol	Chain	Res	Type	Clashes	Symm-Clashes
2	A	401	6NT	1	0

The following is a two-dimensional graphical depiction of Mogul quality analysis of bond lengths, bond angles, torsion angles, and ring geometry for all instances of the Ligand of Interest. In addition, ligands with molecular weight > 250 and outliers as shown on the validation Tables will also be included. For torsion angles, if less than 5% of the Mogul distribution of torsion angles is within 10 degrees of the torsion angle in question, then that torsion angle is considered an outlier. Any bond that is central to one or more torsion angles identified as an outlier by Mogul will be highlighted in the graph. For rings, the root-mean-square deviation (RMSD) between the ring in question and similar rings identified by Mogul is calculated over all ring torsion angles. If the average RMSD is greater than 60 degrees and the minimal RMSD between the ring in question and any Mogul-identified rings is also greater than 60 degrees, then that ring is considered an outlier. The outliers are highlighted in purple. The color gray indicates Mogul did not find sufficient equivalents in the CSD to analyse the geometry.





5.7 Other polymers [i](#)

There are no such residues in this entry.

5.8 Polymer linkage issues

There are no chain breaks in this entry.

6 Fit of model and data [i](#)

6.1 Protein, DNA and RNA chains [i](#)

In the following table, the column labelled '#RSRZ > 2' contains the number (and percentage) of RSRZ outliers, followed by percent RSRZ outliers for the chain as percentile scores relative to all X-ray entries and entries of similar resolution. The OWAB column contains the minimum, median, 95th percentile and maximum values of the occupancy-weighted average B-factor per residue. The column labelled 'Q < 0.9' lists the number of (and percentage) of residues with an average occupancy less than 0.9.

Mol	Chain	Analysed	<RSRZ>	#RSRZ>2	OWAB(Å ²)	Q<0.9
1	A	300/317 (94%)	-0.48	1 (0%) 90 91	5, 15, 32, 48	32 (10%)
1	B	301/317 (94%)	-0.60	2 (0%) 84 87	5, 13, 27, 67	21 (6%)
1	C	300/317 (94%)	-0.67	2 (0%) 84 87	5, 13, 24, 70	30 (10%)
All	All	901/951 (94%)	-0.58	5 (0%) 85 88	5, 13, 27, 70	83 (9%)

All (5) RSRZ outliers are listed below:

Mol	Chain	Res	Type	RSRZ
1	B	3	ALA	5.5
1	A	3	ALA	4.3
1	C	303	GLN	3.6
1	C	275	TRP	2.7
1	B	275	TRP	2.0

6.2 Non-standard residues in protein, DNA, RNA chains [i](#)

There are no non-standard protein/DNA/RNA residues in this entry.

6.3 Carbohydrates [i](#)

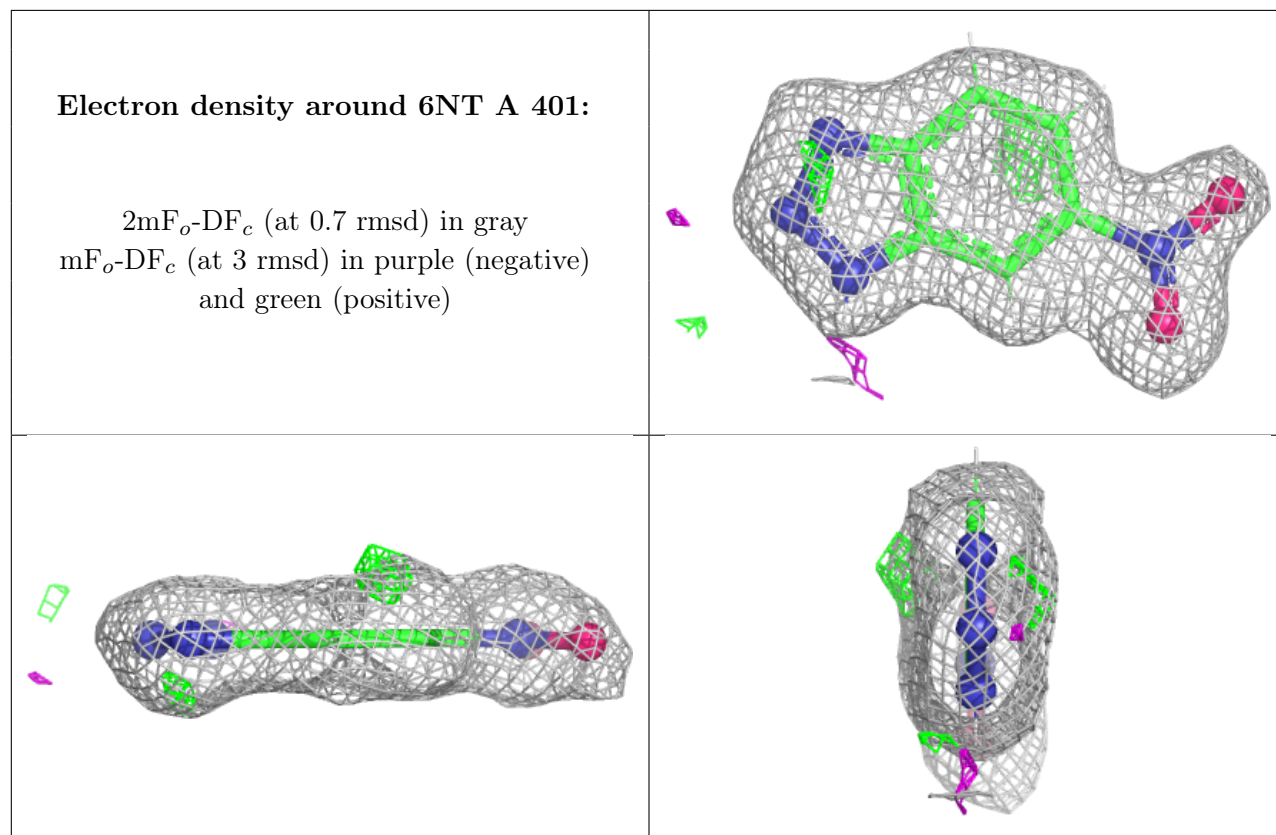
There are no oligosaccharides in this entry.

6.4 Ligands [i](#)

In the following table, the Atoms column lists the number of modelled atoms in the group and the number defined in the chemical component dictionary. The B-factors column lists the minimum, median, 95th percentile and maximum values of B factors of atoms in the group. The column labelled 'Q < 0.9' lists the number of atoms with occupancy less than 0.9.

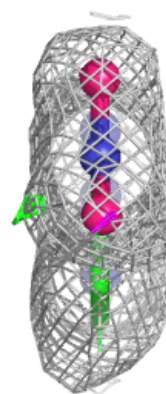
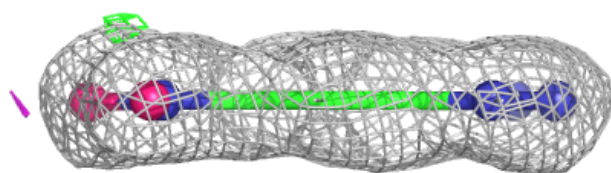
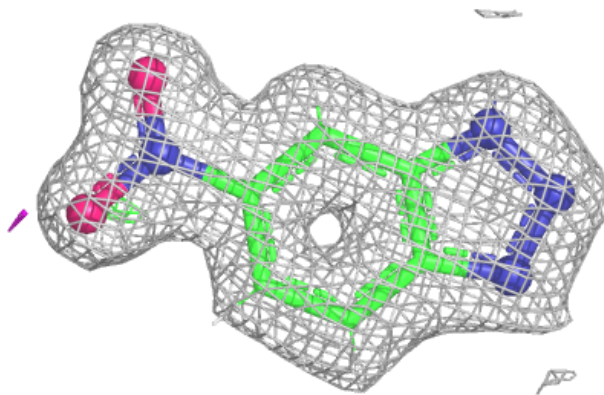
Mol	Type	Chain	Res	Atoms	RSCC	RSR	B-factors(\AA^2)	Q<0.9
2	6NT	A	401	12/12	0.95	0.06	8,13,18,25	0
2	6NT	B	401	12/12	0.96	0.06	9,13,21,21	0
2	6NT	C	401	12/12	0.96	0.05	6,11,18,19	0

The following is a graphical depiction of the model fit to experimental electron density of all instances of the Ligand of Interest. In addition, ligands with molecular weight > 250 and outliers as shown on the geometry validation Tables will also be included. Each fit is shown from different orientation to approximate a three-dimensional view.

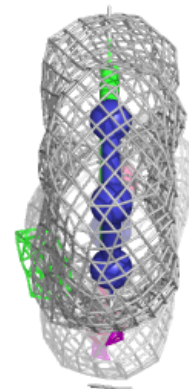
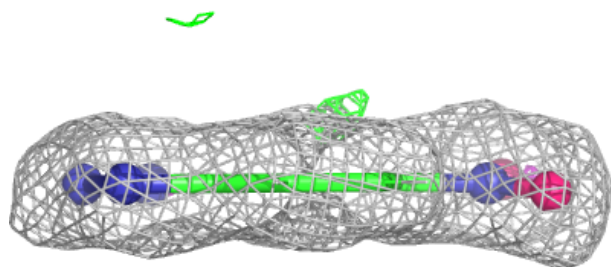
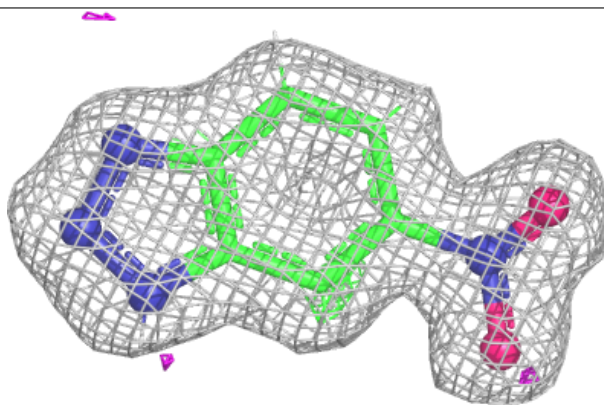


Electron density around 6NT B 401:

$2mF_o-DF_c$ (at 0.7 rmsd) in gray
 mF_o-DF_c (at 3 rmsd) in purple (negative)
and green (positive)

**Electron density around 6NT C 401:**

$2mF_o-DF_c$ (at 0.7 rmsd) in gray
 mF_o-DF_c (at 3 rmsd) in purple (negative)
and green (positive)



6.5 Other polymers [i](#)

There are no such residues in this entry.