



Full wwPDB X-ray Structure Validation Report ⓘ

Mar 5, 2026 – 10:12 AM UTC

PDB ID : 3UZZ / pdb_00003uzz
Title : Crystal structure of 5beta-reductase (AKR1D1) E120H mutant in complex with NADP+ and delta4-androstenedione
Authors : Chen, M.; Christianson, D.W.; Penning, T.M.
Deposited on : 2011-12-07
Resolution : 1.82 Å(reported)

This is a Full wwPDB X-ray Structure Validation Report for a publicly released PDB entry.

We welcome your comments at validation@mail.wwpdb.org

A user guide is available at

<https://www.wwpdb.org/validation/2017/XrayValidationReportHelp>

with specific help available everywhere you see the ⓘ symbol.

The types of validation reports are described at

<http://www.wwpdb.org/validation/2017/FAQs#types>.

The following versions of software and data (see [references ⓘ](#)) were used in the production of this report:

MolProbity : 4-5-2 with Phenix2.0
Mogul : 2022.3.0, CSD as543be (2022)
Xtrriage (Phenix) : 2.0
EDS : 3.0
Buster-report : wwPDB partial adaption of 1.1.7 (2018)
Percentile statistics : 20250101.v01 (using entries in the PDB archive January 1st 2025)
CCP4 : 9.0.010 (Gargrove)
Density-Fitness : 1.0.12
Ideal geometry (proteins) : Engh & Huber (2001)
Ideal geometry (DNA, RNA) : Parkinson et al. (1996)
Validation Pipeline (wwPDB-VP) : 2.49

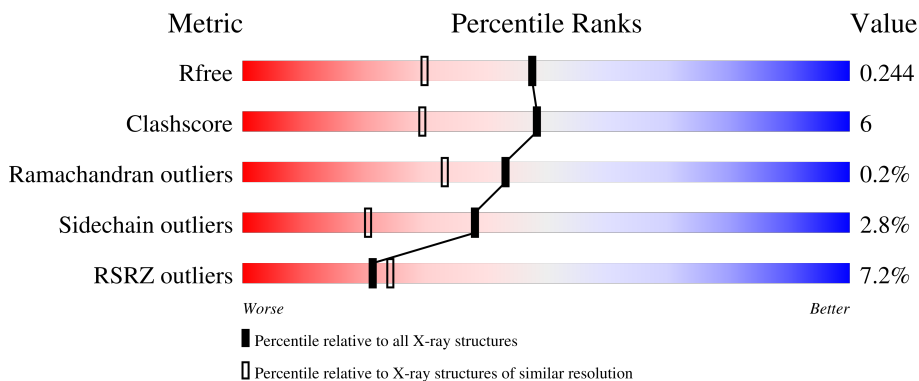
1 Overall quality at a glance

The following experimental techniques were used to determine the structure:

X-RAY DIFFRACTION

The reported resolution of this entry is 1.82 Å.

Percentile scores (ranging between 0-100) for global validation metrics of the entry are shown in the following graphic. The table shows the number of entries on which the scores are based.



Metric	Whole archive (#Entries)	Similar resolution (#Entries, resolution range(Å))
R_{free}	180053	1112 (1.82-1.82)
Clashscore	190562	1148 (1.82-1.82)
Ramachandran outliers	187476	1140 (1.82-1.82)
Sidechain outliers	187428	1140 (1.82-1.82)
RSRZ outliers	180081	1112 (1.82-1.82)

The table below summarises the geometric issues observed across the polymeric chains and their fit to the electron density. The red, orange, yellow and green segments of the lower bar indicate the fraction of residues that contain outliers for ≥ 3 , 2, 1 and 0 types of geometric quality criteria respectively. A grey segment represents the fraction of residues that are not modelled. The numeric value for each fraction is indicated below the corresponding segment, with a dot representing fractions $\leq 5\%$. The upper red bar (where present) indicates the fraction of residues that have poor fit to the electron density. The numeric value is given above the bar.

Mol	Chain	Length	Quality of chain
1	A	346	
1	B	346	

2 Entry composition [i](#)

There are 6 unique types of molecules in this entry. The entry contains 5943 atoms, of which 0 are hydrogens and 0 are deuteriums.

In the tables below, the ZeroOcc column contains the number of atoms modelled with zero occupancy, the AltConf column contains the number of residues with at least one atom in alternate conformation and the Trace column contains the number of residues modelled with at most 2 atoms.

- Molecule 1 is a protein called 3-oxo-5-beta-steroid 4-dehydrogenase.

Mol	Chain	Residues	Atoms					ZeroOcc	AltConf	Trace
			Total	C	N	O	S			
1	A	325	2654	1699	461	483	11	0	4	0
1	B	325	2646	1694	459	482	11	0	3	0

There are 42 discrepancies between the modelled and reference sequences:

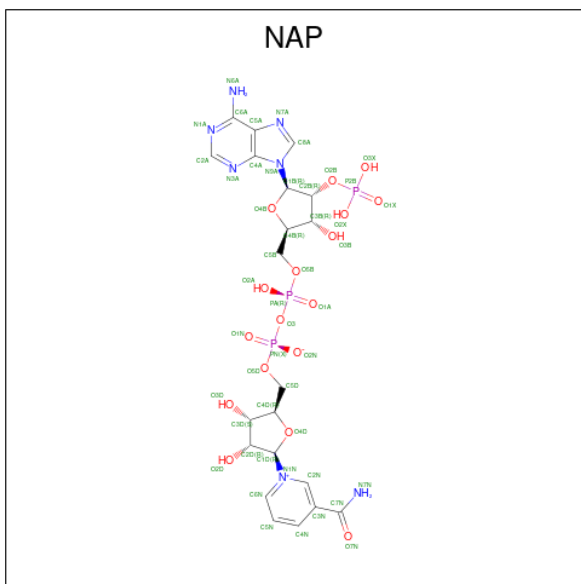
Chain	Residue	Modelled	Actual	Comment	Reference
A	-19	MET	-	expression tag	UNP P51857
A	-18	GLY	-	expression tag	UNP P51857
A	-17	SER	-	expression tag	UNP P51857
A	-16	SER	-	expression tag	UNP P51857
A	-15	HIS	-	expression tag	UNP P51857
A	-14	HIS	-	expression tag	UNP P51857
A	-13	HIS	-	expression tag	UNP P51857
A	-12	HIS	-	expression tag	UNP P51857
A	-11	HIS	-	expression tag	UNP P51857
A	-10	HIS	-	expression tag	UNP P51857
A	-9	SER	-	expression tag	UNP P51857
A	-8	SER	-	expression tag	UNP P51857
A	-7	GLY	-	expression tag	UNP P51857
A	-6	LEU	-	expression tag	UNP P51857
A	-5	VAL	-	expression tag	UNP P51857
A	-4	PRO	-	expression tag	UNP P51857
A	-3	ARG	-	expression tag	UNP P51857
A	-2	GLY	-	expression tag	UNP P51857
A	-1	SER	-	expression tag	UNP P51857
A	0	HIS	-	expression tag	UNP P51857
A	120	HIS	GLU	engineered mutation	UNP P51857
B	-19	MET	-	expression tag	UNP P51857
B	-18	GLY	-	expression tag	UNP P51857
B	-17	SER	-	expression tag	UNP P51857
B	-16	SER	-	expression tag	UNP P51857

Continued on next page...

Continued from previous page...

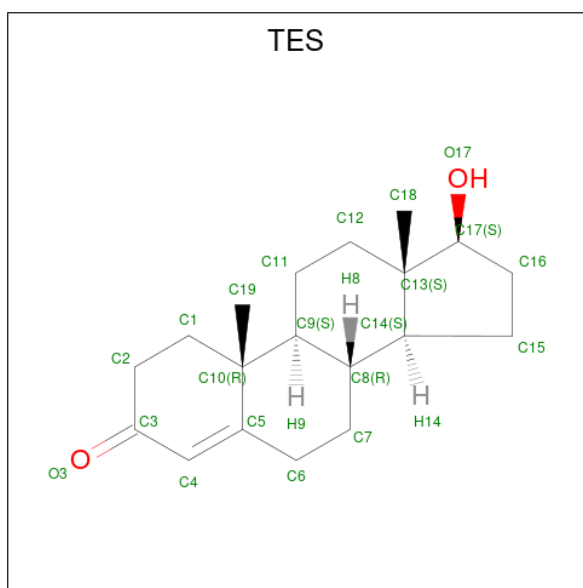
Chain	Residue	Modelled	Actual	Comment	Reference
B	-15	HIS	-	expression tag	UNP P51857
B	-14	HIS	-	expression tag	UNP P51857
B	-13	HIS	-	expression tag	UNP P51857
B	-12	HIS	-	expression tag	UNP P51857
B	-11	HIS	-	expression tag	UNP P51857
B	-10	HIS	-	expression tag	UNP P51857
B	-9	SER	-	expression tag	UNP P51857
B	-8	SER	-	expression tag	UNP P51857
B	-7	GLY	-	expression tag	UNP P51857
B	-6	LEU	-	expression tag	UNP P51857
B	-5	VAL	-	expression tag	UNP P51857
B	-4	PRO	-	expression tag	UNP P51857
B	-3	ARG	-	expression tag	UNP P51857
B	-2	GLY	-	expression tag	UNP P51857
B	-1	SER	-	expression tag	UNP P51857
B	0	HIS	-	expression tag	UNP P51857
B	120	HIS	GLU	engineered mutation	UNP P51857

- Molecule 2 is NADP NICOTINAMIDE-ADENINE-DINUCLEOTIDE PHOSPHATE (CCD ID: NAP) (formula: $C_{21}H_{28}N_7O_{17}P_3$).



Mol	Chain	Residues	Atoms				ZeroOcc	AltConf	
			Total	C	N	O			P
2	A	1	48	21	7	17	3	0	0
2	B	1	48	21	7	17	3	0	0

- Molecule 3 is TESTOSTERONE (CCD ID: TES) (formula: $C_{19}H_{28}O_2$).

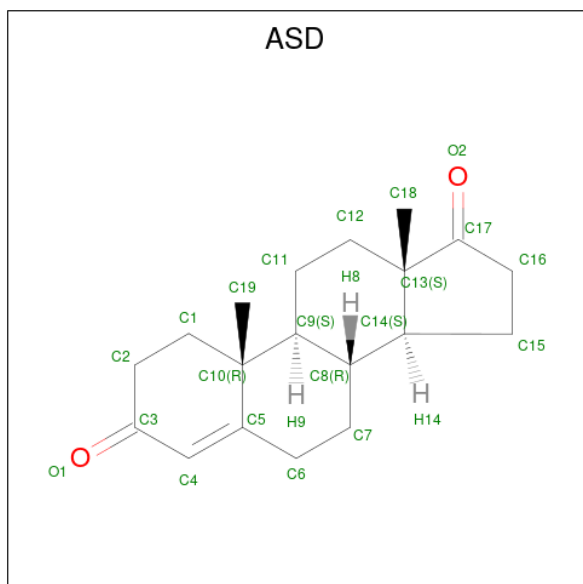


Mol	Chain	Residues	Atoms		ZeroOcc	AltConf	
3	A	1	Total	C	O	0	0
			21	19	2		

- Molecule 4 is CHLORIDE ION (CCD ID: CL) (formula: Cl).

Mol	Chain	Residues	Atoms		ZeroOcc	AltConf
4	A	1	Total	Cl	0	0
			1	1		

- Molecule 5 is 4-ANDROSTENE-3-17-DIONE (CCD ID: ASD) (formula: $C_{19}H_{26}O_2$).



Mol	Chain	Residues	Atoms			ZeroOcc	AltConf
5	B	1	Total	C	O	0	0
			21	19	2		

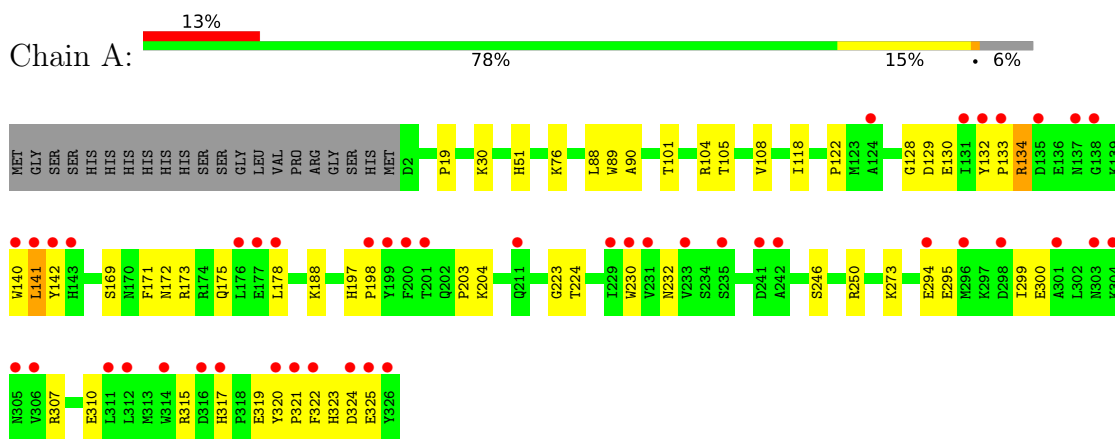
- Molecule 6 is water.

Mol	Chain	Residues	Atoms		ZeroOcc	AltConf
6	A	211	Total	O	0	0
			211	211		
6	B	293	Total	O	0	0
			293	293		

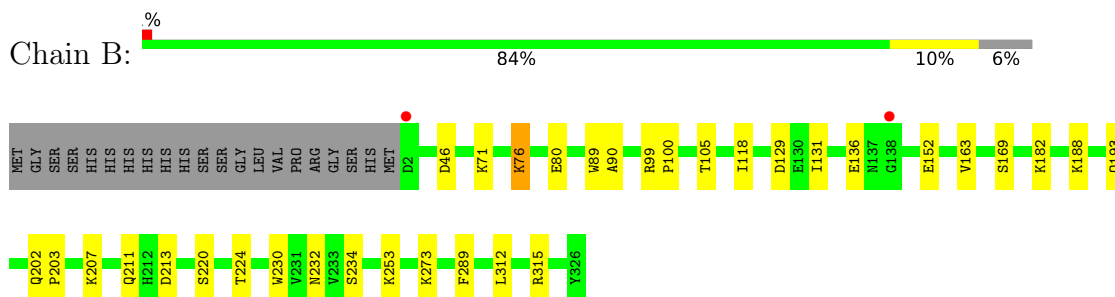
3 Residue-property plots [i](#)

These plots are drawn for all protein, RNA, DNA and oligosaccharide chains in the entry. The first graphic for a chain summarises the proportions of the various outlier classes displayed in the second graphic. The second graphic shows the sequence view annotated by issues in geometry and electron density. Residues are color-coded according to the number of geometric quality criteria for which they contain at least one outlier: green = 0, yellow = 1, orange = 2 and red = 3 or more. A red dot above a residue indicates a poor fit to the electron density ($RSRZ > 2$). Stretches of 2 or more consecutive residues without any outlier are shown as a green connector. Residues present in the sample, but not in the model, are shown in grey.

- Molecule 1: 3-oxo-5-beta-steroid 4-dehydrogenase



- Molecule 1: 3-oxo-5-beta-steroid 4-dehydrogenase



4 Data and refinement statistics

Property	Value	Source
Space group	P 21 21 21	Depositor
Cell constants a, b, c, α , β , γ	50.05Å 110.09Å 129.62Å 90.00° 90.00° 90.00°	Depositor
Resolution (Å)	32.70 – 1.82 32.70 – 1.82	Depositor EDS
% Data completeness (in resolution range)	86.3 (32.70-1.82) 86.3 (32.70-1.82)	Depositor EDS
R_{merge}	0.07	Depositor
R_{sym}	(Not available)	Depositor
$\langle I/\sigma(I) \rangle$ ¹	3.08 (at 1.82Å)	Xtrriage
Refinement program	PHENIX 1.5_2	Depositor
R, R_{free}	0.191 , 0.246 0.190 , 0.244	Depositor DCC
R_{free} test set	2976 reflections (5.06%)	wwPDB-VP
Wilson B-factor (Å ²)	16.2	Xtrriage
Anisotropy	0.143	Xtrriage
Bulk solvent k_{sol} (e/Å ³), B_{sol} (Å ²)	0.31 , 40.9	EDS
L-test for twinning ²	$\langle L \rangle = 0.49$, $\langle L^2 \rangle = 0.32$	Xtrriage
Estimated twinning fraction	No twinning to report.	Xtrriage
F_o, F_c correlation	0.95	EDS
Total number of atoms	5943	wwPDB-VP
Average B, all atoms (Å ²)	21.0	wwPDB-VP

Xtrriage's analysis on translational NCS is as follows: *The largest off-origin peak in the Patterson function is 4.88% of the height of the origin peak. No significant pseudotranslation is detected.*

¹Intensities estimated from amplitudes.

²Theoretical values of $\langle |L| \rangle$, $\langle L^2 \rangle$ for acentric reflections are 0.5, 0.333 respectively for untwinned datasets, and 0.375, 0.2 for perfectly twinned datasets.

5 Model quality

5.1 Standard geometry

Bond lengths and bond angles in the following residue types are not validated in this section: NAP, ASD, TES, CL

The Z score for a bond length (or angle) is the number of standard deviations the observed value is removed from the expected value. A bond length (or angle) with $|Z| > 5$ is considered an outlier worth inspection. RMSZ is the root-mean-square of all Z scores of the bond lengths (or angles).

Mol	Chain	Bond lengths		Bond angles	
		RMSZ	# Z >5	RMSZ	# Z >5
1	A	0.40	0/2732	0.72	0/3702
1	B	0.42	0/2721	0.72	0/3687
All	All	0.41	0/5453	0.72	0/7389

There are no bond length outliers.

There are no bond angle outliers.

There are no chirality outliers.

There are no planarity outliers.

5.2 Too-close contacts

In the following table, the Non-H and H(model) columns list the number of non-hydrogen atoms and hydrogen atoms in the chain respectively. The H(added) column lists the number of hydrogen atoms added and optimized by MolProbity. The Clashes column lists the number of clashes within the asymmetric unit, whereas Symm-Clashes lists symmetry-related clashes.

Mol	Chain	Non-H	H(model)	H(added)	Clashes	Symm-Clashes
1	A	2654	0	2661	37	0
1	B	2646	0	2650	21	0
2	A	48	0	25	2	0
2	B	48	0	25	2	0
3	A	21	0	28	4	0
4	A	1	0	0	0	0
5	B	21	0	26	2	0
6	A	211	0	0	6	0
6	B	293	0	0	2	0
All	All	5943	0	5415	60	0

The all-atom clashscore is defined as the number of clashes found per 1000 atoms (including

hydrogen atoms). The all-atom clashscore for this structure is 6.

All (60) close contacts within the same asymmetric unit are listed below, sorted by their clash magnitude.

Atom-1	Atom-2	Interatomic distance (Å)	Clash overlap (Å)
1:A:132:TYR:CE2	3:A:501:TES:H122	2.20	0.76
1:B:312:LEU:HD22	1:B:315:ARG:HH11	1.54	0.70
1:A:230:TRP:HB3	3:A:501:TES:H181	1.74	0.69
1:B:230:TRP:HB3	5:B:501:ASD:H181	1.77	0.66
1:B:152:GLU:HG3	1:B:182:LYS:HE3	1.78	0.66
1:A:315:ARG:HA	1:A:320:TYR:CD2	2.31	0.65
1:A:307:ARG:HB2	1:A:310:GLU:HG2	1.82	0.60
1:A:132:TYR:HB3	1:A:140:TRP:HZ3	1.67	0.59
1:A:197:HIS:HB2	1:A:198:PRO:CD	2.33	0.58
1:A:295:GLU:O	1:A:299:ILE:HG13	2.04	0.57
1:A:203:PRO:HD3	6:A:1067:HOH:O	2.06	0.56
1:A:132:TYR:HB3	1:A:140:TRP:CZ3	2.41	0.55
1:A:76:LYS:HD3	6:A:1139:HOH:O	2.08	0.53
1:A:134:ARG:HG3	1:A:140:TRP:CE3	2.44	0.53
1:A:133:PRO:HB2	1:A:141:LEU:HD12	1.90	0.53
1:A:232:ASN:HB2	6:A:1186:HOH:O	2.09	0.53
1:A:172:ASN:ND2	1:A:321:PRO:HA	2.23	0.52
1:A:320:TYR:CE1	1:A:322:PHE:HB2	2.45	0.52
1:B:273:LYS:O	2:B:401:NAP:H8A	2.10	0.51
1:A:273:LYS:O	2:A:401:NAP:H8A	2.11	0.51
1:A:88:LEU:HD12	1:A:101:THR:HG21	1.93	0.50
1:A:172:ASN:HD22	1:A:321:PRO:HA	1.77	0.50
2:A:401:NAP:H6N	2:A:401:NAP:H3D	1.92	0.50
1:A:132:TYR:CZ	3:A:501:TES:H122	2.46	0.50
1:A:142:TYR:CD2	1:A:317:HIS:HD2	2.29	0.50
1:B:80:GLU:H	1:B:80:GLU:CD	2.20	0.49
1:B:202:GLN:N	1:B:203:PRO:HD3	2.26	0.49
1:B:118:ILE:HD12	1:B:169:SER:HB2	1.94	0.49
1:B:89:TRP:CG	1:B:90:ALA:N	2.80	0.49
1:A:307:ARG:HB2	1:A:310:GLU:CG	2.42	0.48
1:A:122:PRO:HG3	1:A:171:PHE:CD1	2.50	0.47
1:B:99:ARG:HB3	1:B:100:PRO:HD3	1.95	0.47
1:A:128:GLY:C	1:A:130:GLU:H	2.22	0.47
1:A:118:ILE:HD12	1:A:169:SER:HB2	1.97	0.46
1:B:89:TRP:CG	1:B:90:ALA:H	2.34	0.46
1:B:230:TRP:HB3	5:B:501:ASD:C18	2.46	0.46
1:A:175:GLN:NE2	1:A:319:GLU:O	2.44	0.45
1:A:323:HIS:HB2	6:A:1078:HOH:O	2.17	0.45

Continued on next page...

Continued from previous page...

Atom-1	Atom-2	Interatomic distance (Å)	Clash overlap (Å)
1:B:273:LYS:HD3	1:B:273:LYS:C	2.42	0.45
1:B:131:ILE:HD11	6:B:1215:HOH:O	2.16	0.44
1:A:142:TYR:CG	1:A:317:HIS:HD2	2.36	0.44
1:A:223:GLY:C	1:A:224:THR:HG23	2.43	0.44
1:B:232:ASN:OD1	1:B:234:SER:HB2	2.18	0.43
1:A:19:PRO:HB2	1:A:51:HIS:HB2	1.99	0.43
1:A:204:LYS:HE2	6:A:1114:HOH:O	2.18	0.43
1:B:188:LYS:HE3	6:B:1006:HOH:O	2.17	0.43
1:B:253:LYS:HE3	1:B:289:PHE:CD1	2.53	0.43
1:A:89:TRP:CG	1:A:90:ALA:N	2.86	0.43
1:B:46:ASP:HA	1:B:76:LYS:HE2	2.02	0.42
1:A:173[A]:ARG:HB3	6:A:1016:HOH:O	2.20	0.41
1:A:319:GLU:O	1:A:320:TYR:C	2.60	0.41
1:B:220:SER:HB3	1:B:224:THR:HG22	2.03	0.41
1:A:104:ARG:O	1:A:108:VAL:HG23	2.19	0.41
1:A:273:LYS:C	1:A:273:LYS:HD3	2.46	0.41
1:A:324:ASP:O	1:A:325:GLU:C	2.64	0.41
3:A:501:TES:H111	3:A:501:TES:H193	1.72	0.41
1:A:142:TYR:CG	1:A:317:HIS:CD2	3.10	0.40
1:B:193:GLN:OE1	2:B:401:NAP:H2N	2.21	0.40
1:B:207:LYS:O	1:B:211:GLN:HG3	2.20	0.40
1:B:71:LYS:HD3	1:B:71:LYS:HA	1.88	0.40

There are no symmetry-related clashes.

5.3 Torsion angles [i](#)

5.3.1 Protein backbone [i](#)

In the following table, the Percentiles column shows the percent Ramachandran outliers of the chain as a percentile score with respect to all X-ray entries followed by that with respect to entries of similar resolution.

The Analysed column shows the number of residues for which the backbone conformation was analysed, and the total number of residues.

Mol	Chain	Analysed	Favoured	Allowed	Outliers	Percentiles	
1	A	327/346 (94%)	309 (94%)	17 (5%)	1 (0%)	36	26
1	B	326/346 (94%)	319 (98%)	7 (2%)	0	100	100
All	All	653/692 (94%)	628 (96%)	24 (4%)	1 (0%)	43	33

All (1) Ramachandran outliers are listed below:

Mol	Chain	Res	Type
1	A	141	LEU

5.3.2 Protein sidechains [i](#)

In the following table, the Percentiles column shows the percent sidechain outliers of the chain as a percentile score with respect to all X-ray entries followed by that with respect to entries of similar resolution.

The Analysed column shows the number of residues for which the sidechain conformation was analysed, and the total number of residues.

Mol	Chain	Analysed	Rotameric	Outliers	Percentiles	
1	A	293/307 (95%)	282 (96%)	11 (4%)	29	11
1	B	292/307 (95%)	286 (98%)	6 (2%)	47	32
All	All	585/614 (95%)	568 (97%)	17 (3%)	38	19

All (17) residues with a non-rotameric sidechain are listed below:

Mol	Chain	Res	Type
1	A	30	LYS
1	A	105	THR
1	A	129	ASP
1	A	134	ARG
1	A	178	LEU
1	A	188	LYS
1	A	246	SER
1	A	250	ARG
1	A	294	GLU
1	A	300[A]	GLU
1	A	300[B]	GLU
1	B	76	LYS
1	B	105	THR
1	B	129	ASP
1	B	136	GLU
1	B	163	VAL
1	B	213	ASP

Sometimes sidechains can be flipped to improve hydrogen bonding and reduce clashes. All (6) such sidechains are listed below:

Mol	Chain	Res	Type
1	A	16	ASN
1	A	93	HIS
1	A	137	ASN
1	A	211	GLN
1	B	170	ASN
1	B	211	GLN

5.3.3 RNA [i](#)

There are no RNA molecules in this entry.

5.4 Non-standard residues in protein, DNA, RNA chains [i](#)

There are no non-standard protein/DNA/RNA residues in this entry.

5.5 Carbohydrates [i](#)

There are no oligosaccharides in this entry.

5.6 Ligand geometry [i](#)

Of 5 ligands modelled in this entry, 1 is monoatomic - leaving 4 for Mogul analysis.

In the following table, the Counts columns list the number of bonds (or angles) for which Mogul statistics could be retrieved, the number of bonds (or angles) that are observed in the model and the number of bonds (or angles) that are defined in the Chemical Component Dictionary. The Link column lists molecule types, if any, to which the group is linked. The Z score for a bond length (or angle) is the number of standard deviations the observed value is removed from the expected value. A bond length (or angle) with $|Z| > 2$ is considered an outlier worth inspection. RMSZ is the root-mean-square of all Z scores of the bond lengths (or angles).

Mol	Type	Chain	Res	Link	Bond lengths			Bond angles		
					Counts	RMSZ	$\# Z > 2$	Counts	RMSZ	$\# Z > 2$
5	ASD	B	501	-	24,24,24	0.54	0	39,39,39	0.65	0
2	NAP	A	401	-	50,52,52	1.18	4 (8%)	71,80,80	1.59	14 (19%)
2	NAP	B	401	-	50,52,52	1.20	5 (10%)	71,80,80	1.73	13 (18%)
3	TES	A	501	-	24,24,24	0.93	1 (4%)	39,39,39	1.83	7 (17%)

In the following table, the Chirals column lists the number of chiral outliers, the number of chiral centers analysed, the number of these observed in the model and the number defined in the Chemical Component Dictionary. Similar counts are reported in the Torsion and Rings columns.

'-' means no outliers of that kind were identified.

Mol	Type	Chain	Res	Link	Chirals	Torsions	Rings
5	ASD	B	501	-	-	-	0/4/4/4
2	NAP	A	401	-	-	7/35/67/67	0/5/5/5
2	NAP	B	401	-	-	3/35/67/67	0/5/5/5
3	TES	A	501	-	-	-	0/4/4/4

All (10) bond length outliers are listed below:

Mol	Chain	Res	Type	Atoms	Z	Observed(Å)	Ideal(Å)
2	A	401	NAP	O4D-C1D	3.91	1.46	1.40
2	B	401	NAP	PA-O3	3.42	1.63	1.59
2	B	401	NAP	O4D-C1D	3.38	1.45	1.40
2	A	401	NAP	PN-O3	2.92	1.62	1.59
2	B	401	NAP	PN-O3	2.65	1.62	1.59
2	A	401	NAP	PA-O3	2.58	1.62	1.59
2	B	401	NAP	C2N-N1N	-2.19	1.32	1.35
2	A	401	NAP	C2N-N1N	-2.15	1.32	1.35
3	A	501	TES	C10-C5	-2.13	1.48	1.52
2	B	401	NAP	C3N-C7N	-2.11	1.47	1.50

All (34) bond angle outliers are listed below:

Mol	Chain	Res	Type	Atoms	Z	Observed(°)	Ideal(°)
2	B	401	NAP	C5A-C4A-N3A	-5.75	118.80	126.72
3	A	501	TES	C13-C14-C8	-4.98	107.34	114.41
2	A	401	NAP	C5A-C4A-N3A	-4.72	120.22	126.72
2	B	401	NAP	N3A-C4A-N9A	4.62	135.03	127.17
3	A	501	TES	C1-C10-C5	4.27	116.11	108.74
2	B	401	NAP	N3A-C2A-N1A	-4.13	122.32	128.58
2	B	401	NAP	P2B-O2B-C2B	-4.05	112.60	123.43
3	A	501	TES	C11-C9-C10	-3.93	108.25	113.08
2	A	401	NAP	N3A-C4A-N9A	3.82	133.67	127.17
2	A	401	NAP	N3A-C2A-N1A	-3.76	122.90	128.58
3	A	501	TES	C19-C10-C9	-3.74	107.46	111.66
2	B	401	NAP	C2A-N3A-C4A	3.72	120.91	111.83
2	A	401	NAP	C5A-N7A-C8A	3.50	108.96	103.45
2	B	401	NAP	C5A-N7A-C8A	3.50	108.95	103.45
2	A	401	NAP	O2A-PA-O3	3.42	116.53	107.27
2	B	401	NAP	C5N-C4N-C3N	-3.38	117.04	120.36
2	B	401	NAP	O2A-PA-O3	3.33	116.28	107.27
2	A	401	NAP	P2B-O2B-C2B	-3.17	114.97	123.43
2	A	401	NAP	C2A-N3A-C4A	3.14	119.50	111.83

Continued on next page...

Continued from previous page...

Mol	Chain	Res	Type	Atoms	Z	Observed(°)	Ideal(°)
2	A	401	NAP	C4A-C5A-N7A	-2.97	107.19	110.58
3	A	501	TES	C14-C13-C17	2.95	102.25	99.25
2	A	401	NAP	N9A-C8A-N7A	-2.93	109.78	113.94
2	B	401	NAP	C4A-C5A-N7A	-2.77	107.41	110.58
2	B	401	NAP	N9A-C8A-N7A	-2.70	110.10	113.94
2	A	401	NAP	C5N-C4N-C3N	-2.46	117.95	120.36
2	B	401	NAP	O3-PN-O1N	-2.42	103.41	110.70
3	A	501	TES	C6-C5-C4	-2.16	117.41	120.86
2	A	401	NAP	C3N-C7N-N7N	2.14	120.37	117.74
2	A	401	NAP	C4A-N9A-C8A	2.11	107.95	105.74
2	A	401	NAP	PN-O5D-C5D	-2.08	109.42	121.35
2	B	401	NAP	PN-O5D-C5D	-2.04	109.65	121.35
2	A	401	NAP	C2D-C3D-C4D	-2.03	98.69	102.61
2	B	401	NAP	O3X-P2B-O2B	2.02	113.72	105.85
3	A	501	TES	C10-C9-C8	-2.01	109.77	112.71

There are no chirality outliers.

All (10) torsion outliers are listed below:

Mol	Chain	Res	Type	Atoms
2	A	401	NAP	O4D-C1D-N1N-C6N
2	A	401	NAP	PA-O3-PN-O5D
2	B	401	NAP	PA-O3-PN-O5D
2	A	401	NAP	C5D-O5D-PN-O3
2	A	401	NAP	C5D-O5D-PN-O1N
2	A	401	NAP	C4D-C5D-O5D-PN
2	A	401	NAP	O4D-C1D-N1N-C2N
2	B	401	NAP	PA-O3-PN-O1N
2	B	401	NAP	C4D-C5D-O5D-PN
2	A	401	NAP	PN-O3-PA-O2A

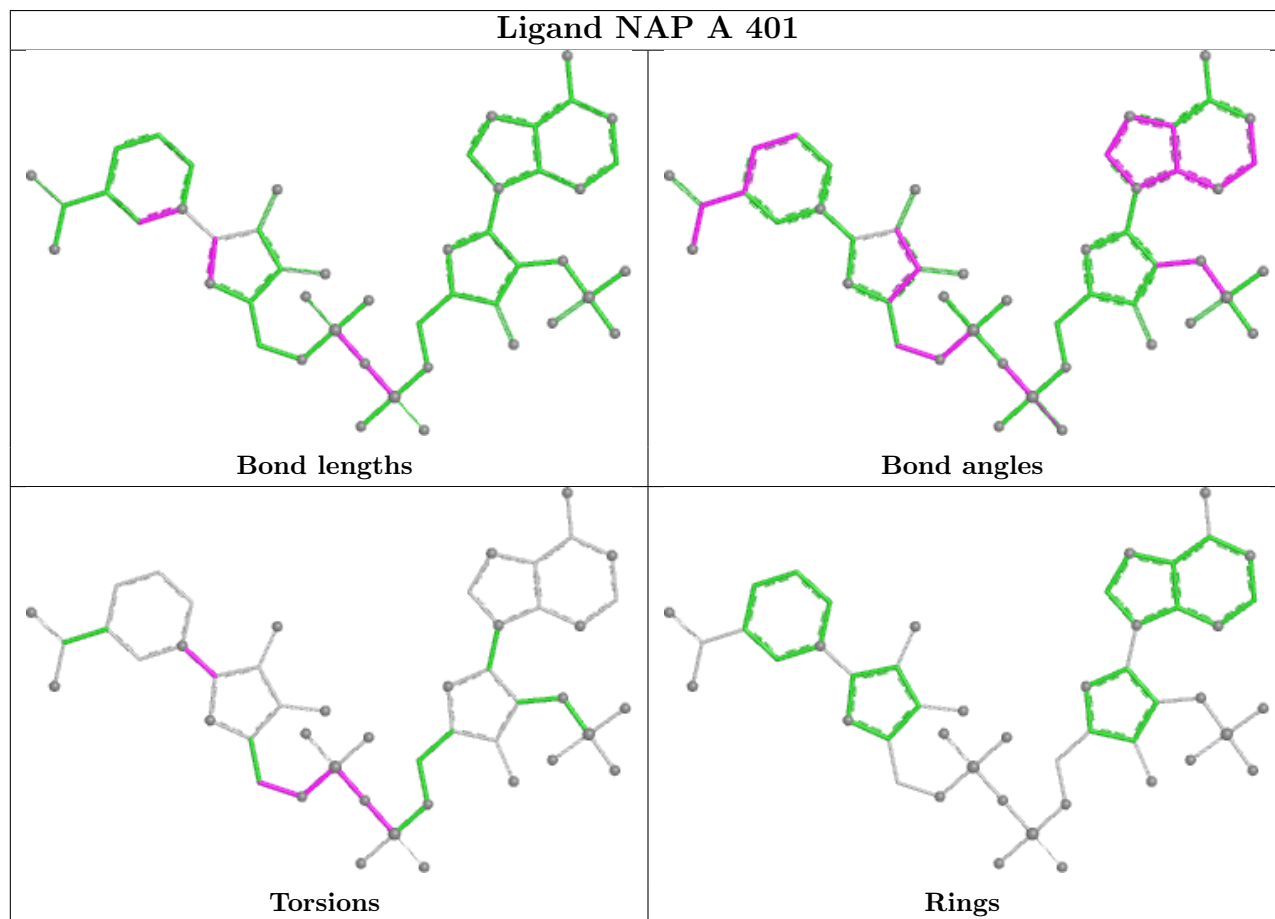
There are no ring outliers.

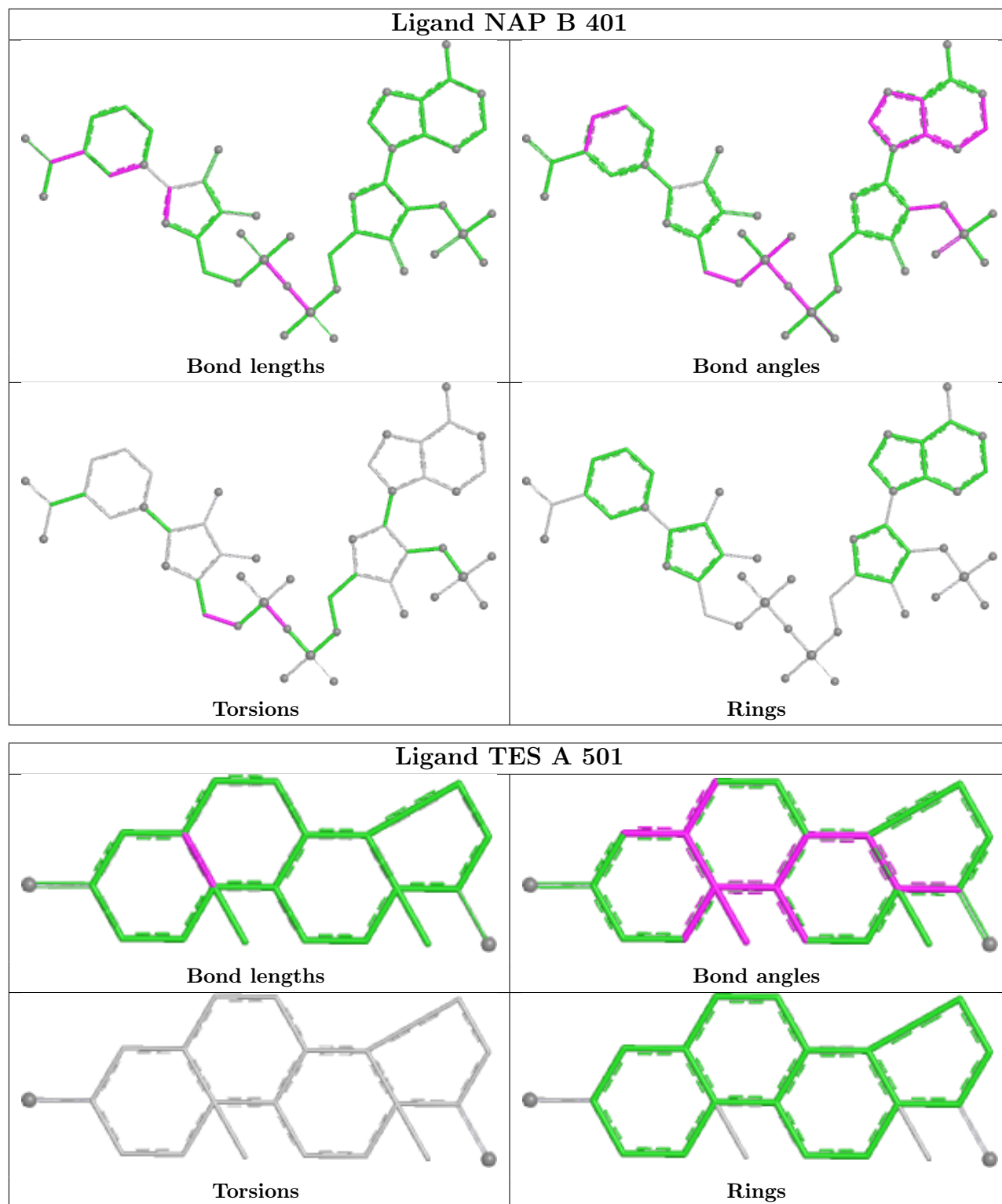
4 monomers are involved in 10 short contacts:

Mol	Chain	Res	Type	Clashes	Symm-Clashes
5	B	501	ASD	2	0
2	A	401	NAP	2	0
2	B	401	NAP	2	0
3	A	501	TES	4	0

The following is a two-dimensional graphical depiction of Mogul quality analysis of bond lengths,

bond angles, torsion angles, and ring geometry for all instances of the Ligand of Interest. In addition, ligands with molecular weight > 250 and outliers as shown on the validation Tables will also be included. For torsion angles, if less than 5% of the Mogul distribution of torsion angles is within 10 degrees of the torsion angle in question, then that torsion angle is considered an outlier. Any bond that is central to one or more torsion angles identified as an outlier by Mogul will be highlighted in the graph. For rings, the root-mean-square deviation (RMSD) between the ring in question and similar rings identified by Mogul is calculated over all ring torsion angles. If the average RMSD is greater than 60 degrees and the minimal RMSD between the ring in question and any Mogul-identified rings is also greater than 60 degrees, then that ring is considered an outlier. The outliers are highlighted in purple. The color gray indicates Mogul did not find sufficient equivalents in the CSD to analyse the geometry.





5.7 Other polymers [\(i\)](#)

There are no such residues in this entry.

5.8 Polymer linkage issues

There are no chain breaks in this entry.

6 Fit of model and data

6.1 Protein, DNA and RNA chains

In the following table, the column labelled ‘#RSRZ > 2’ contains the number (and percentage) of RSRZ outliers, followed by percent RSRZ outliers for the chain as percentile scores relative to all X-ray entries and entries of similar resolution. The OWAB column contains the minimum, median, 95th percentile and maximum values of the occupancy-weighted average B-factor per residue. The column labelled ‘Q < 0.9’ lists the number of (and percentage) of residues with an average occupancy less than 0.9.

Mol	Chain	Analysed	<RSRZ>	#RSRZ>2	OWAB(Å ²)	Q<0.9
1	A	325/346 (93%)	0.50	45 (13%) 6 7	8, 21, 48, 79	4 (1%)
1	B	325/346 (93%)	-0.34	2 (0%) 85 89	7, 15, 31, 48	3 (0%)
All	All	650/692 (93%)	0.08	47 (7%) 21 24	7, 17, 43, 79	7 (1%)

All (47) RSRZ outliers are listed below:

Mol	Chain	Res	Type	RSRZ
1	A	140	TRP	4.3
1	A	229	ILE	3.8
1	A	306	VAL	3.8
1	A	322	PHE	3.7
1	A	142	TYR	3.7
1	A	242	ALA	3.5
1	A	316	ASP	3.4
1	A	312	LEU	3.4
1	A	230	TRP	3.2
1	A	326	TYR	3.2
1	A	138	GLY	3.1
1	A	199	TYR	2.9
1	A	177	GLU	2.9
1	A	320	TYR	2.9
1	A	314	TRP	2.8
1	A	141	LEU	2.8
1	A	305	ASN	2.7
1	A	201	THR	2.6
1	A	133	PRO	2.6
1	A	135	ASP	2.6
1	A	132	TYR	2.6
1	A	294	GLU	2.6
1	A	131	ILE	2.5
1	A	304	LYS	2.5

Continued on next page...

Continued from previous page...

Mol	Chain	Res	Type	RSRZ
1	A	211	GLN	2.4
1	A	325	GLU	2.4
1	A	137	ASN	2.4
1	A	303	ASN	2.4
1	A	124	ALA	2.4
1	A	200	PHE	2.3
1	A	198	PRO	2.3
1	A	233	VAL	2.3
1	A	231	VAL	2.2
1	A	301	ALA	2.2
1	B	2	ASP	2.2
1	A	143	HIS	2.2
1	A	296	MET	2.2
1	A	324	ASP	2.2
1	A	298	ASP	2.1
1	A	235	SER	2.1
1	A	178	LEU	2.1
1	A	317	HIS	2.1
1	A	241	ASP	2.1
1	B	138	GLY	2.1
1	A	321	PRO	2.1
1	A	176	LEU	2.1
1	A	311	LEU	2.1

6.2 Non-standard residues in protein, DNA, RNA chains [i](#)

There are no non-standard protein/DNA/RNA residues in this entry.

6.3 Carbohydrates [i](#)

There are no oligosaccharides in this entry.

6.4 Ligands [i](#)

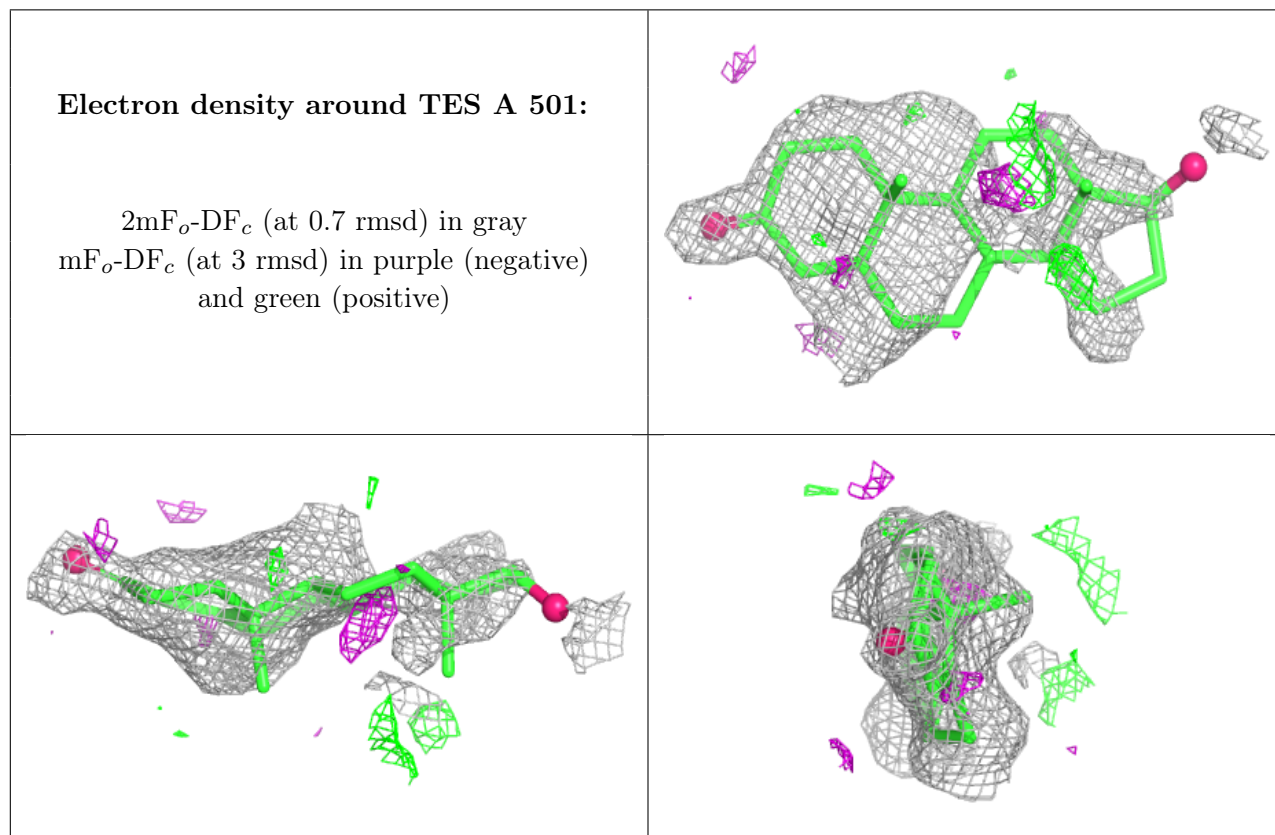
In the following table, the Atoms column lists the number of modelled atoms in the group and the number defined in the chemical component dictionary. The B-factors column lists the minimum, median, 95th percentile and maximum values of B factors of atoms in the group. The column labelled 'Q< 0.9' lists the number of atoms with occupancy less than 0.9.

Continued on next page...

Continued from previous page...

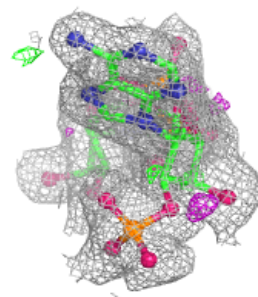
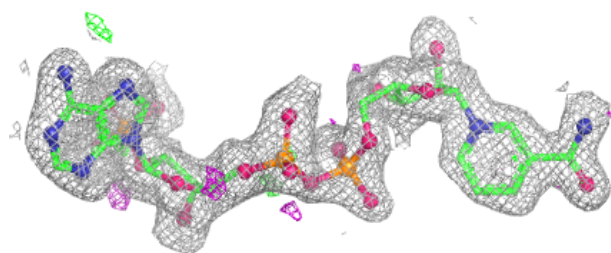
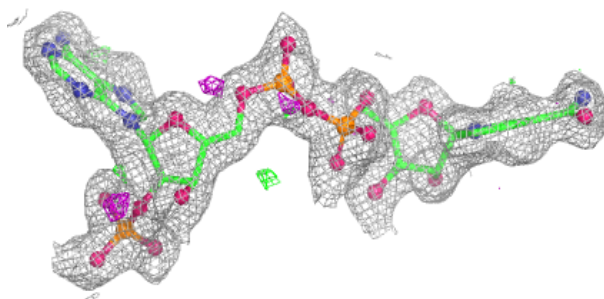
Mol	Type	Chain	Res	Atoms	RSCC	RSR	B-factors(\AA^2)	Q<0.9
3	TES	A	501	21/21	0.76	0.20	25,49,64,68	0
5	ASD	B	501	21/21	0.91	0.10	17,28,39,51	0
2	NAP	A	401	48/48	0.97	0.06	10,15,21,24	0
2	NAP	B	401	48/48	0.98	0.04	5,10,15,21	0
4	CL	A	601	1/1	0.99	0.07	22,22,22,22	0

The following is a graphical depiction of the model fit to experimental electron density of all instances of the Ligand of Interest. In addition, ligands with molecular weight > 250 and outliers as shown on the geometry validation Tables will also be included. Each fit is shown from different orientation to approximate a three-dimensional view.

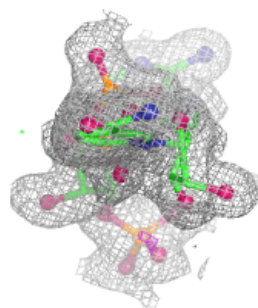
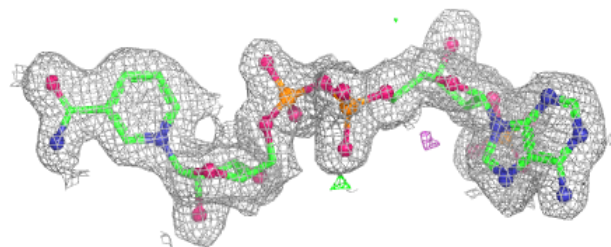
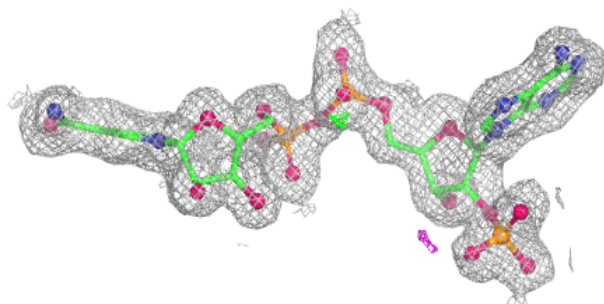


Electron density around NAP A 401:

$2mF_o-DF_c$ (at 0.7 rmsd) in gray
 mF_o-DF_c (at 3 rmsd) in purple (negative)
and green (positive)

**Electron density around NAP B 401:**

$2mF_o-DF_c$ (at 0.7 rmsd) in gray
 mF_o-DF_c (at 3 rmsd) in purple (negative)
and green (positive)



6.5 Other polymers [i](#)

There are no such residues in this entry.