



Full wwPDB X-ray Structure Validation Report ⓘ

Mar 1, 2026 – 01:07 AM UTC

PDB ID : 2VBG / pdb_00002vbg
Title : The complex structure of the branched-chain keto acid decarboxylase (KdcA) from *Lactococcus lactis* with 2R-1-hydroxyethyl-deazaThDP
Authors : Berthold, C.L.; Gocke, D.; Wood, M.D.; Leeper, F.; Pohl, M.; Schneider, G.
Deposited on : 2007-09-12
Resolution : 1.80 Å (reported)

This is a Full wwPDB X-ray Structure Validation Report for a publicly released PDB entry.

We welcome your comments at validation@mail.wwpdb.org

A user guide is available at

<https://www.wwpdb.org/validation/2017/XrayValidationReportHelp>

with specific help available everywhere you see the ⓘ symbol.

The types of validation reports are described at

<http://www.wwpdb.org/validation/2017/FAQs#types>.

The following versions of software and data (see [references ⓘ](#)) were used in the production of this report:

MolProbity : 4-5-2 with Phenix2.0
Mogul : 2022.3.0, CSD as543be (2022)
Xtrriage (Phenix) : **NOT EXECUTED**
EDS : **NOT EXECUTED**
Buster-report : wwPDB partial adaption of 1.1.7 (2018)
Percentile statistics : 20250101.v01 (using entries in the PDB archive January 1st 2025)
Ideal geometry (proteins) : Engh & Huber (2001)
Ideal geometry (DNA, RNA) : Parkinson et al. (1996)
Validation Pipeline (wwPDB-VP) : 2.49

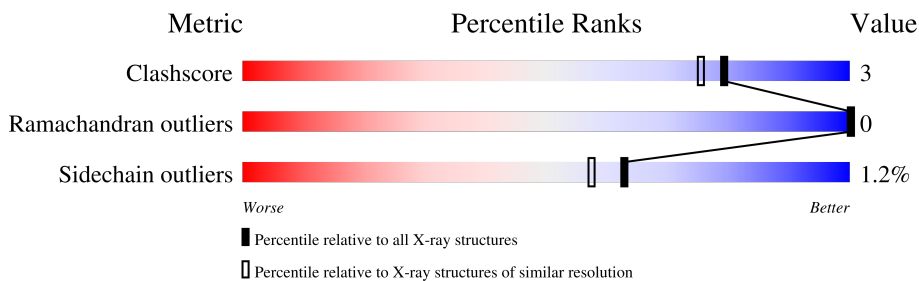
1 Overall quality at a glance i

The following experimental techniques were used to determine the structure:

X-RAY DIFFRACTION

The reported resolution of this entry is 1.80 Å.

Percentile scores (ranging between 0-100) for global validation metrics of the entry are shown in the following graphic. The table shows the number of entries on which the scores are based.



Metric	Whole archive (#Entries)	Similar resolution (#Entries, resolution range(Å))
Clashscore	190562	8479 (1.80-1.80)
Ramachandran outliers	187476	8391 (1.80-1.80)
Sidechain outliers	187428	8390 (1.80-1.80)

The table below summarises the geometric issues observed across the polymeric chains and their fit to the electron density. The red, orange, yellow and green segments of the lower bar indicate the fraction of residues that contain outliers for ≥ 3 , 2, 1 and 0 types of geometric quality criteria respectively. A grey segment represents the fraction of residues that are not modelled. The numeric value for each fraction is indicated below the corresponding segment, with a dot representing fractions $\leq 5\%$.

Note EDS was not executed.

Mol	Chain	Length	Quality of chain
1	A	570	 90% 6% 5% 5%
1	B	570	 90% 5% 5% 5%

2 Entry composition [i](#)

There are 4 unique types of molecules in this entry. The entry contains 9634 atoms, of which 0 are hydrogens and 0 are deuteriums.

In the tables below, the ZeroOcc column contains the number of atoms modelled with zero occupancy, the AltConf column contains the number of residues with at least one atom in alternate conformation and the Trace column contains the number of residues modelled with at most 2 atoms.

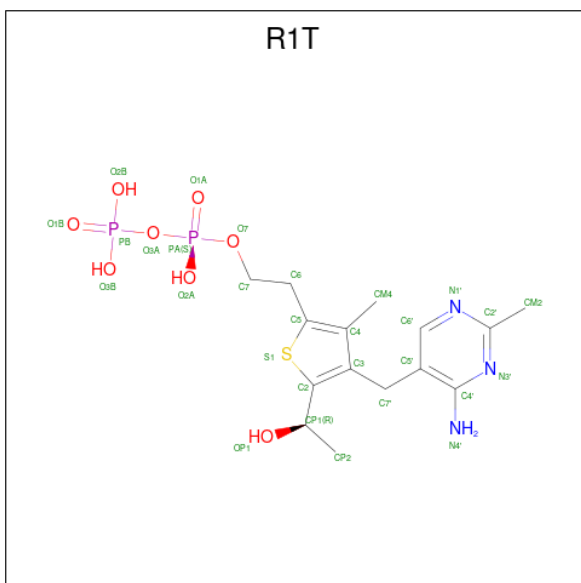
- Molecule 1 is a protein called BRANCHED-CHAIN ALPHA-KETOACID DECARBOXYLASE.

Mol	Chain	Residues	Atoms					ZeroOcc	AltConf	Trace
			Total	C	N	O	S			
1	A	546	4330	2770	703	844	13	6	12	0
1	B	544	4294	2745	700	837	12	0	7	0

- Molecule 2 is MAGNESIUM ION (CCD ID: MG) (formula: Mg).

Mol	Chain	Residues	Atoms		ZeroOcc	AltConf
2	A	1	Total	Mg	0	0
			1	1		
2	B	1	Total	Mg	0	0
			1	1		

- Molecule 3 is 2-{4-[(4-AMINO-2-METHYLPYRIMIDIN-5-YL)METHYL]-5-[(1R)-1-HYDROXYETHYL]-3-METHYL-2-THIENYL}ETHYL TRIHYDROGEN DIPHOSPHATE (CCD ID: R1T) (formula: C₁₅H₂₃N₃O₈P₂S).



Mol	Chain	Residues	Atoms					ZeroOcc	AltConf	
			Total	C	N	O	P			S
3	A	1	29	15	3	8	2	1	0	0
3	B	1	29	15	3	8	2	1	0	0

- Molecule 4 is water.

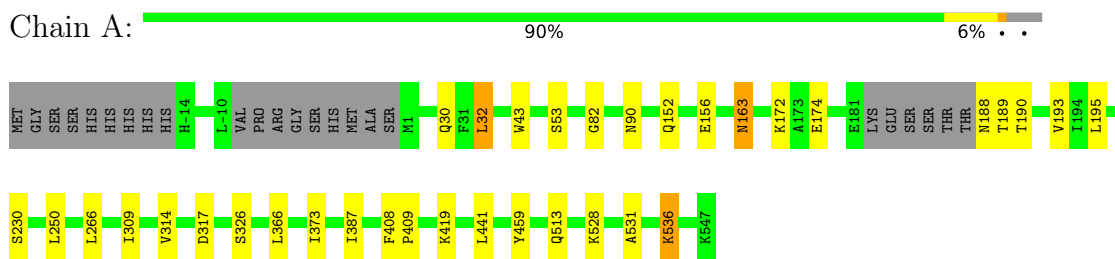
Mol	Chain	Residues	Atoms		ZeroOcc	AltConf
4	A	478	Total	O	0	0
			478	478		
4	B	472	Total	O	0	0
			472	472		

3 Residue-property plots [i](#)

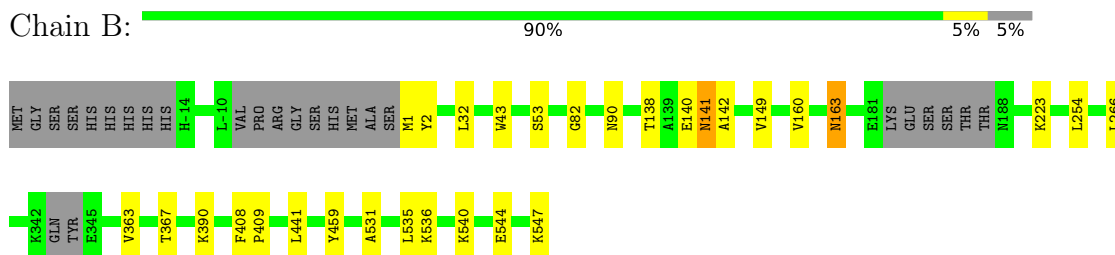
These plots are drawn for all protein, RNA, DNA and oligosaccharide chains in the entry. The first graphic for a chain summarises the proportions of the various outlier classes displayed in the second graphic. The second graphic shows the sequence view annotated by issues in geometry. Residues are color-coded according to the number of geometric quality criteria for which they contain at least one outlier: green = 0, yellow = 1, orange = 2 and red = 3 or more. Stretches of 2 or more consecutive residues without any outlier are shown as a green connector. Residues present in the sample, but not in the model, are shown in grey.

Note EDS was not executed.

- Molecule 1: BRANCHED-CHAIN ALPHA-KETOACID DECARBOXYLASE



- Molecule 1: BRANCHED-CHAIN ALPHA-KETOACID DECARBOXYLASE



4 Data and refinement statistics

Xtrriage (Phenix) and EDS were not executed - this section is therefore incomplete.

Property	Value	Source
Space group	P 21 21 21	Depositor
Cell constants a, b, c, α , β , γ	65.98Å 108.58Å 146.53Å 90.00° 90.00° 90.00°	Depositor
Resolution (Å)	30.00 – 1.80	Depositor
% Data completeness (in resolution range)	97.3 (30.00-1.80)	Depositor
R_{merge}	0.09	Depositor
R_{sym}	(Not available)	Depositor
Refinement program	REFMAC 5.2.0019	Depositor
R, R_{free}	0.163 , 0.205	Depositor
Estimated twinning fraction	No twinning to report.	Xtrriage
Total number of atoms	9634	wwPDB-VP
Average B, all atoms (Å ²)	16.0	wwPDB-VP

5 Model quality [i](#)

5.1 Standard geometry [i](#)

Bond lengths and bond angles in the following residue types are not validated in this section: MG, R1T

The Z score for a bond length (or angle) is the number of standard deviations the observed value is removed from the expected value. A bond length (or angle) with $|Z| > 5$ is considered an outlier worth inspection. RMSZ is the root-mean-square of all Z scores of the bond lengths (or angles).

Mol	Chain	Bond lengths		Bond angles	
		RMSZ	# Z >5	RMSZ	# Z >5
1	A	0.55	1/4443 (0.0%)	0.74	2/6010 (0.0%)
1	B	0.55	0/4389	0.73	0/5937
All	All	0.55	1/8832 (0.0%)	0.73	2/11947 (0.0%)

All (1) bond length outliers are listed below:

Mol	Chain	Res	Type	Atoms	Z	Observed(Å)	Ideal(Å)
1	A	172[A]	LYS	CG-CD	6.01	1.70	1.52

All (2) bond angle outliers are listed below:

Mol	Chain	Res	Type	Atoms	Z	Observed(°)	Ideal(°)
1	A	172[A]	LYS	CB-CG-CD	-5.41	98.87	111.30
1	A	419[A]	LYS	CB-CG-CD	-5.26	99.19	111.30

There are no chirality outliers.

There are no planarity outliers.

5.2 Too-close contacts [i](#)

In the following table, the Non-H and H(model) columns list the number of non-hydrogen atoms and hydrogen atoms in the chain respectively. The H(added) column lists the number of hydrogen atoms added and optimized by MolProbity. The Clashes column lists the number of clashes within the asymmetric unit, whereas Symm-Clashes lists symmetry-related clashes.

Mol	Chain	Non-H	H(model)	H(added)	Clashes	Symm-Clashes
1	A	4330	0	4319	22	0
1	B	4294	0	4291	24	0
2	A	1	0	0	0	0

Continued on next page...

Continued from previous page...

Mol	Chain	Non-H	H(model)	H(added)	Clashes	Symm-Clashes
2	B	1	0	0	0	0
3	A	29	0	20	2	0
3	B	29	0	20	1	0
4	A	478	0	0	3	0
4	B	472	0	0	2	0
All	All	9634	0	8650	47	0

The all-atom clashscore is defined as the number of clashes found per 1000 atoms (including hydrogen atoms). The all-atom clashscore for this structure is 3.

All (47) close contacts within the same asymmetric unit are listed below, sorted by their clash magnitude.

Atom-1	Atom-2	Interatomic distance (Å)	Clash overlap (Å)
1:A:366:LEU:O	4:A:2316:HOH:O	1.82	0.97
1:A:513:GLN:NE2	4:A:2316:HOH:O	1.99	0.88
1:B:141:ASN:C	1:B:141:ASN:HD22	1.87	0.82
1:A:195:LEU:HD11	1:A:326:SER:OG	1.89	0.73
1:B:163:ASN:HD22	1:B:163:ASN:C	2.05	0.65
1:B:254:LEU:HB3	1:B:266[B]:LEU:HD13	1.80	0.64
1:A:190:THR:HG21	1:A:317:ASP:OD2	1.98	0.64
1:B:149[B]:VAL:CG1	1:B:160:VAL:HB	2.29	0.63
1:A:152:GLN:NE2	1:A:156:GLU:OE2	2.24	0.63
1:A:373:ILE:CD1	1:A:387[A]:ILE:HD11	2.31	0.61
1:A:163:ASN:C	1:A:163:ASN:HD22	2.08	0.60
1:B:363:VAL:O	1:B:367[B]:THR:HG23	2.02	0.60
1:B:367[A]:THR:HG23	1:B:390:LYS:HD3	1.85	0.58
1:A:373:ILE:HD12	1:A:387[A]:ILE:HD11	1.86	0.58
1:B:1:MET:HE3	1:B:2:TYR:H	1.69	0.56
1:B:141:ASN:HD22	1:B:142:ALA:N	2.04	0.56
1:B:141:ASN:C	1:B:141:ASN:ND2	2.56	0.56
1:A:309:ILE:HD12	1:A:314:VAL:HG22	1.89	0.55
1:B:138:THR:H	1:B:141:ASN:ND2	2.07	0.52
1:B:223:LYS:NZ	4:B:2228:HOH:O	2.42	0.52
1:B:138:THR:H	1:B:141:ASN:HD21	1.58	0.51
1:A:528:LYS:NZ	4:A:2453:HOH:O	2.44	0.50
1:A:441:LEU:C	1:A:441:LEU:HD23	2.38	0.49
1:A:163:ASN:C	1:A:163:ASN:ND2	2.72	0.48
1:B:459:TYR:CD1	3:B:1549:R1T:H61	2.49	0.48
1:B:163:ASN:C	1:B:163:ASN:ND2	2.71	0.46
1:A:309:ILE:CD1	1:A:314:VAL:HG22	2.45	0.46
1:A:30[A]:GLN:NE2	4:B:2469:HOH:O	2.48	0.46

Continued on next page...

Continued from previous page...

Atom-1	Atom-2	Interatomic distance (Å)	Clash overlap (Å)
1:A:53:SER:OG	1:A:82:GLY:HA3	2.15	0.46
1:B:544:GLU:OE1	1:B:547:LYS:NZ	2.49	0.45
1:B:441:LEU:C	1:B:441:LEU:HD23	2.41	0.45
1:B:408:PHE:HB3	1:B:409:PRO:HD3	1.98	0.45
1:A:408:PHE:HB3	1:A:409:PRO:HD3	1.99	0.44
1:B:531:ALA:HB3	1:B:536:LYS:HE2	1.99	0.44
1:A:459:TYR:CD1	3:A:1549:R1T:H61	2.53	0.44
1:A:266:LEU:C	1:A:266:LEU:HD23	2.43	0.43
1:A:189:THR:O	1:A:193:VAL:HG23	2.18	0.43
1:A:230[B]:SER:OG	1:A:250:LEU:CD2	2.67	0.43
1:A:32:LEU:HD21	1:A:43:TRP:CD2	2.54	0.42
1:A:531:ALA:HB3	1:A:536:LYS:HE3	2.01	0.42
3:A:1549:R1T:C2	3:A:1549:R1T:H4'2	2.33	0.42
1:B:254:LEU:CB	1:B:266[B]:LEU:HD13	2.48	0.42
1:B:149[B]:VAL:HG13	1:B:160:VAL:HB	1.99	0.41
1:B:32:LEU:HD21	1:B:43:TRP:CD2	2.56	0.41
1:B:53:SER:OG	1:B:82:GLY:HA3	2.21	0.41

There are no symmetry-related clashes.

5.3 Torsion angles [i](#)

5.3.1 Protein backbone [i](#)

In the following table, the Percentiles column shows the percent Ramachandran outliers of the chain as a percentile score with respect to all X-ray entries followed by that with respect to entries of similar resolution.

The Analysed column shows the number of residues for which the backbone conformation was analysed, and the total number of residues.

Mol	Chain	Analysed	Favoured	Allowed	Outliers	Percentiles	
1	A	550/570 (96%)	540 (98%)	10 (2%)	0	100	100
1	B	543/570 (95%)	535 (98%)	8 (2%)	0	100	100
All	All	1093/1140 (96%)	1075 (98%)	18 (2%)	0	100	100

There are no Ramachandran outliers to report.

5.3.2 Protein sidechains

In the following table, the Percentiles column shows the percent sidechain outliers of the chain as a percentile score with respect to all X-ray entries followed by that with respect to entries of similar resolution.

The Analysed column shows the number of residues for which the sidechain conformation was analysed, and the total number of residues.

Mol	Chain	Analysed	Rotameric	Outliers	Percentiles	
1	A	481/492 (98%)	475 (99%)	6 (1%)	63	57
1	B	476/492 (97%)	471 (99%)	5 (1%)	65	60
All	All	957/984 (97%)	946 (99%)	11 (1%)	63	60

All (11) residues with a non-rotameric sidechain are listed below:

Mol	Chain	Res	Type
1	A	32	LEU
1	A	90	ASN
1	A	163	ASN
1	A	174	GLU
1	A	188	ASN
1	A	536	LYS
1	B	90	ASN
1	B	140	GLU
1	B	141	ASN
1	B	163	ASN
1	B	540	LYS

Sometimes sidechains can be flipped to improve hydrogen bonding and reduce clashes. All (9) such sidechains are listed below:

Mol	Chain	Res	Type
1	A	163	ASN
1	A	192	GLN
1	A	294	HIS
1	A	545	GLN
1	B	141	ASN
1	B	163	ASN
1	B	377	GLN
1	B	513	GLN
1	B	545	GLN

5.3.3 RNA [i](#)

There are no RNA molecules in this entry.

5.4 Non-standard residues in protein, DNA, RNA chains [i](#)

There are no non-standard protein/DNA/RNA residues in this entry.

5.5 Carbohydrates [i](#)

There are no oligosaccharides in this entry.

5.6 Ligand geometry [i](#)

Of 4 ligands modelled in this entry, 2 are monoatomic - leaving 2 for Mogul analysis.

In the following table, the Counts columns list the number of bonds (or angles) for which Mogul statistics could be retrieved, the number of bonds (or angles) that are observed in the model and the number of bonds (or angles) that are defined in the Chemical Component Dictionary. The Link column lists molecule types, if any, to which the group is linked. The Z score for a bond length (or angle) is the number of standard deviations the observed value is removed from the expected value. A bond length (or angle) with $|Z| > 2$ is considered an outlier worth inspection. RMSZ is the root-mean-square of all Z scores of the bond lengths (or angles).

Mol	Type	Chain	Res	Link	Bond lengths			Bond angles		
					Counts	RMSZ	# Z > 2	Counts	RMSZ	# Z > 2
3	R1T	B	1549	2	27,30,30	2.01	5 (18%)	36,45,45	2.12	9 (25%)
3	R1T	A	1549	2	27,30,30	1.92	7 (25%)	36,45,45	2.43	8 (22%)

In the following table, the Chirals column lists the number of chiral outliers, the number of chiral centers analysed, the number of these observed in the model and the number defined in the Chemical Component Dictionary. Similar counts are reported in the Torsion and Rings columns. '-' means no outliers of that kind were identified.

Mol	Type	Chain	Res	Link	Chirals	Torsions	Rings
3	R1T	B	1549	2	-	4/21/21/21	0/2/2/2
3	R1T	A	1549	2	-	3/21/21/21	0/2/2/2

All (12) bond length outliers are listed below:

Mol	Chain	Res	Type	Atoms	Z	Observed(Å)	Ideal(Å)
3	B	1549	R1T	C2-S1	5.96	1.83	1.73

Continued on next page...

Continued from previous page...

Mol	Chain	Res	Type	Atoms	Z	Observed(Å)	Ideal(Å)
3	B	1549	R1T	C3-C4	5.87	1.54	1.38
3	A	1549	R1T	C3-C4	5.62	1.53	1.38
3	A	1549	R1T	C2-S1	4.99	1.82	1.73
3	A	1549	R1T	CP1-C2	2.82	1.53	1.50
3	A	1549	R1T	C5-S1	2.80	1.79	1.74
3	B	1549	R1T	CP1-C2	2.64	1.53	1.50
3	B	1549	R1T	C7'-C5'	2.60	1.55	1.51
3	B	1549	R1T	PA-O3A	2.59	1.62	1.59
3	A	1549	R1T	C7'-C3	-2.25	1.48	1.51
3	A	1549	R1T	C7'-C5'	2.18	1.54	1.51
3	A	1549	R1T	PA-O3A	2.17	1.61	1.59

All (17) bond angle outliers are listed below:

Mol	Chain	Res	Type	Atoms	Z	Observed(°)	Ideal(°)
3	A	1549	R1T	C4-C5-S1	-10.65	107.65	113.50
3	B	1549	R1T	C4-C5-S1	-8.18	109.02	113.50
3	B	1549	R1T	N1'-C2'-N3'	-3.60	119.53	125.53
3	A	1549	R1T	C7'-C3-C4	-3.35	121.77	126.60
3	A	1549	R1T	N1'-C2'-N3'	-3.35	119.96	125.53
3	A	1549	R1T	C6'-N1'-C2'	3.24	121.40	116.07
3	B	1549	R1T	CM2-C2'-N1'	3.18	120.58	117.20
3	B	1549	R1T	C6'-N1'-C2'	3.06	121.10	116.07
3	A	1549	R1T	C7'-C5'-C4'	2.94	126.13	122.07
3	A	1549	R1T	C2-C3-C4	2.82	115.47	113.24
3	B	1549	R1T	C7'-C3-C4	-2.80	122.57	126.60
3	A	1549	R1T	C7'-C5'-C6'	-2.73	117.89	122.19
3	B	1549	R1T	C7'-C5'-C4'	2.70	125.80	122.07
3	B	1549	R1T	C7'-C5'-C6'	-2.58	118.12	122.19
3	A	1549	R1T	CM2-C2'-N1'	2.55	119.92	117.20
3	B	1549	R1T	CP1-C2-C3	-2.32	126.02	129.05
3	B	1549	R1T	C2'-N3'-C4'	2.12	121.37	118.10

There are no chirality outliers.

All (7) torsion outliers are listed below:

Mol	Chain	Res	Type	Atoms
3	A	1549	R1T	S1-C2-CP1-OP1
3	B	1549	R1T	S1-C2-CP1-OP1
3	B	1549	R1T	PA-O3A-PB-O1B
3	A	1549	R1T	PA-O3A-PB-O2B
3	A	1549	R1T	PA-O3A-PB-O3B

Continued on next page...

Continued from previous page...

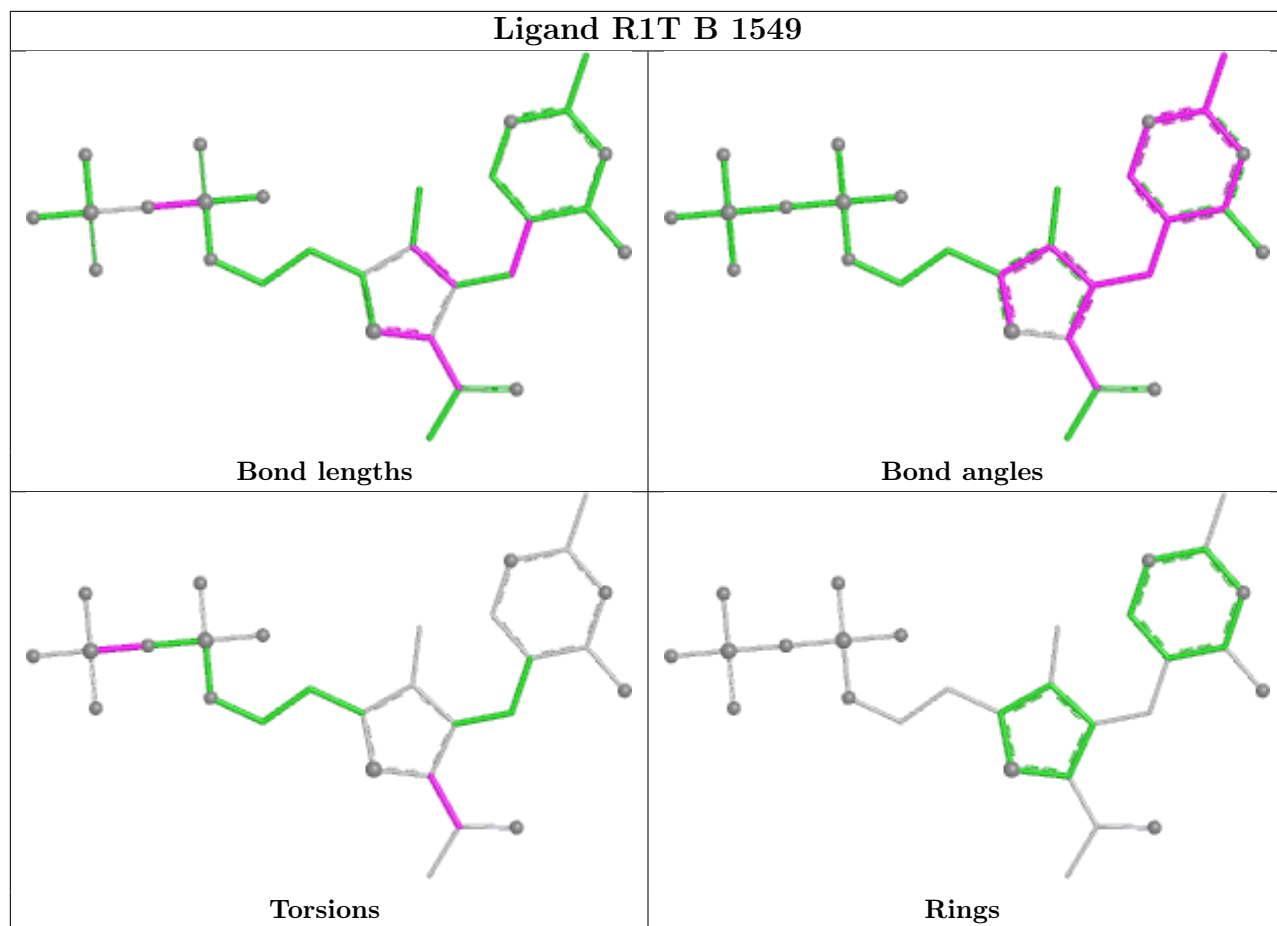
Mol	Chain	Res	Type	Atoms
3	B	1549	R1T	PA-O3A-PB-O2B
3	B	1549	R1T	PA-O3A-PB-O3B

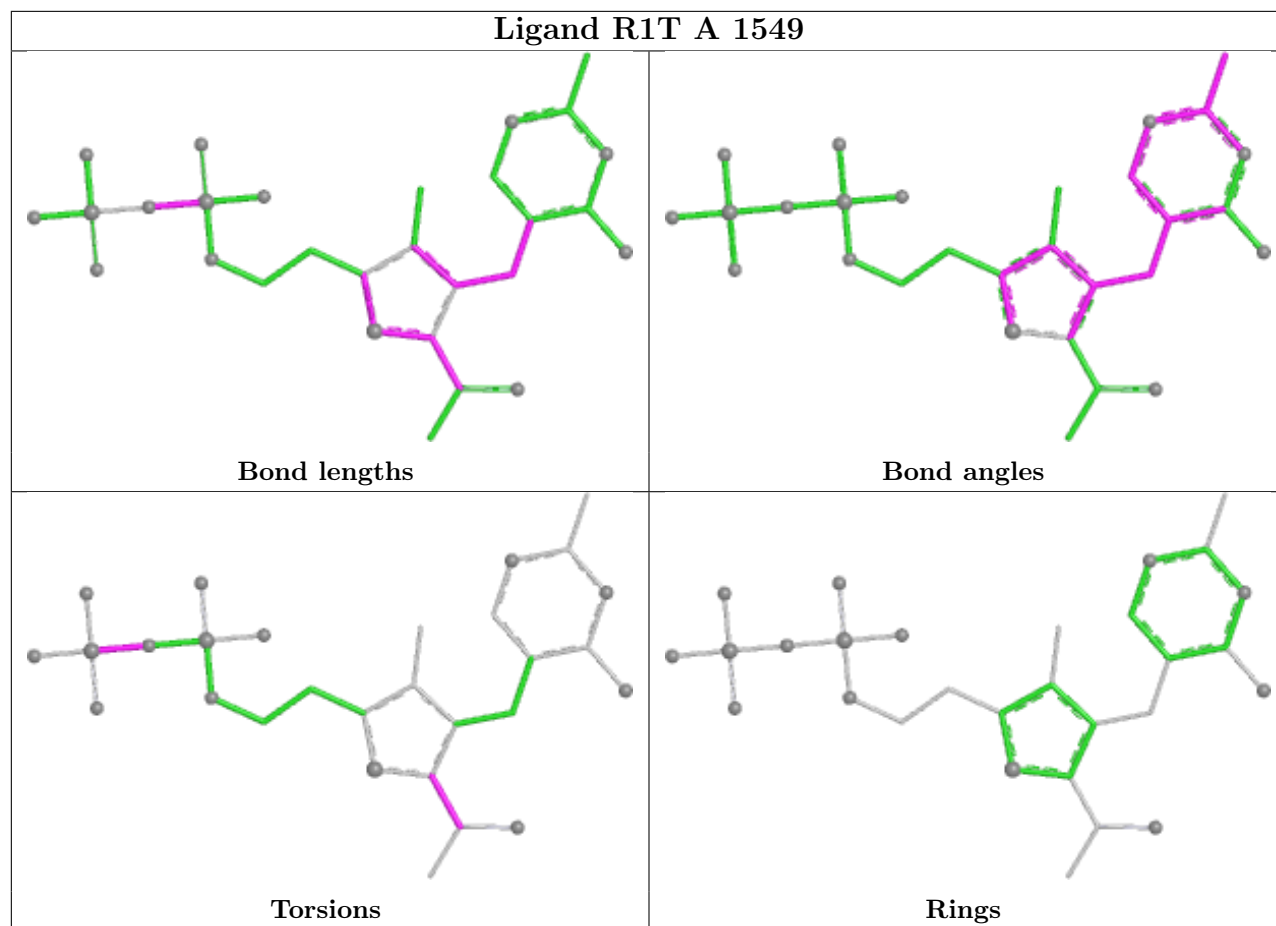
There are no ring outliers.

2 monomers are involved in 3 short contacts:

Mol	Chain	Res	Type	Clashes	Symm-Clashes
3	B	1549	R1T	1	0
3	A	1549	R1T	2	0

The following is a two-dimensional graphical depiction of Mogul quality analysis of bond lengths, bond angles, torsion angles, and ring geometry for all instances of the Ligand of Interest. In addition, ligands with molecular weight > 250 and outliers as shown on the validation Tables will also be included. For torsion angles, if less than 5% of the Mogul distribution of torsion angles is within 10 degrees of the torsion angle in question, then that torsion angle is considered an outlier. Any bond that is central to one or more torsion angles identified as an outlier by Mogul will be highlighted in the graph. For rings, the root-mean-square deviation (RMSD) between the ring in question and similar rings identified by Mogul is calculated over all ring torsion angles. If the average RMSD is greater than 60 degrees and the minimal RMSD between the ring in question and any Mogul-identified rings is also greater than 60 degrees, then that ring is considered an outlier. The outliers are highlighted in purple. The color gray indicates Mogul did not find sufficient equivalents in the CSD to analyse the geometry.





5.7 Other polymers [i](#)

There are no such residues in this entry.

5.8 Polymer linkage issues [i](#)

There are no chain breaks in this entry.

6 Fit of model and data

6.1 Protein, DNA and RNA chains

EDS was not executed - this section is therefore empty.

6.2 Non-standard residues in protein, DNA, RNA chains

EDS was not executed - this section is therefore empty.

6.3 Carbohydrates

EDS was not executed - this section is therefore empty.

6.4 Ligands

EDS was not executed - this section is therefore empty.

6.5 Other polymers

EDS was not executed - this section is therefore empty.