



wwPDB EM Validation Summary Report ⓘ

Mar 5, 2026 – 09:03 PM UTC

PDB ID : 7VBZ / pdb_00007vbz
EMDB ID : EMD-31886
Title : Matrix arm of active state CI from Rotenone-NADH dataset
Authors : Gu, J.K.; Yang, M.J.
Deposited on : 2021-09-01
Resolution : 2.40 Å(reported)

This is a wwPDB EM Validation Summary Report for a publicly released PDB entry.

We welcome your comments at validation@mail.wwpdb.org

A user guide is available at

<https://www.wwpdb.org/validation/2017/EMValidationReportHelp>

with specific help available everywhere you see the ⓘ symbol.

The types of validation reports are described at

<http://www.wwpdb.org/validation/2017/FAQs#types>.

The following versions of software and data (see [references ⓘ](#)) were used in the production of this report:

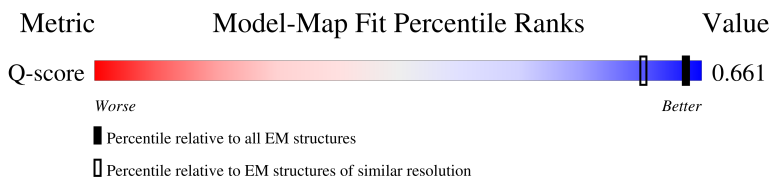
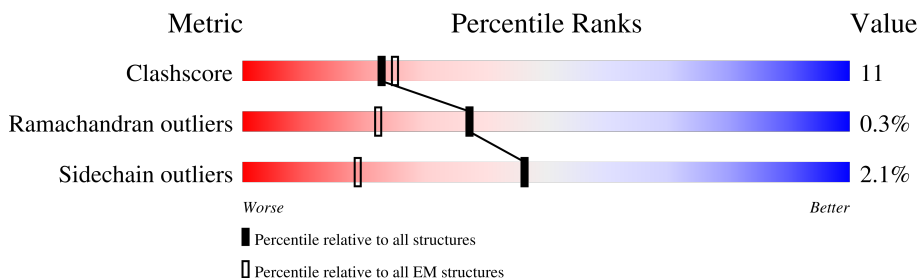
EMDB validation analysis : 0.0.1.dev132
Mogul : 2022.3.0, CSD as543be (2022)
MolProbity : 4-5-2 with Phenix2.0
Buster-report : wwPDB partial adaption of 1.1.7 (2018)
Percentile statistics : 20250101.v01 (using entries in the PDB archive January 1st 2025)
EM percentile statistics : 202505.v01 (Using data in the EMDB archive up until May 2025)
MapQ : 1.9.13
Ideal geometry (proteins) : Engh & Huber (2001)
Ideal geometry (DNA, RNA) : Parkinson et al. (1996)
Validation Pipeline (wwPDB-VP) : 2.49

1 Overall quality at a glance i

The following experimental techniques were used to determine the structure:
ELECTRON MICROSCOPY

The reported resolution of this entry is 2.40 Å.

Percentile scores (ranging between 0-100) for global validation metrics of the entry are shown in the following graphic. The table shows the number of entries on which the scores are based.



Metric	Whole archive (#Entries)	EM structures (#Entries)	Similar EM resolution (#Entries, resolution range(Å))
Clashscore	229148	23984	-
Ramachandran outliers	224038	23583	-
Sidechain outliers	223484	23102	-
Q-score	-	25397	5628 (1.90 - 2.90)

The table below summarises the geometric issues observed across the polymeric chains and their fit to the map. The red, orange, yellow and green segments of the bar indicate the fraction of residues that contain outliers for ≥ 3 , 2, 1 and 0 types of geometric quality criteria respectively. A grey segment represents the fraction of residues that are not modelled. The numeric value for each fraction is indicated below the corresponding segment, with a dot representing fractions $\leq 5\%$. The upper red bar (where present) indicates the fraction of residues that have poor fit to the EM map (all-atom inclusion $< 40\%$). The numeric value is given above the bar.

Mol	Chain	Length	Quality of chain
1	A	433	<p>75% 24%</p>
2	B	176	<p>82% 18%</p>
3	C	156	<p>81% 18%</p>
4	E	115	<p>8% 88% 10%</p>

Continued on next page...

Continued from previous page...

Mol	Chain	Length	Quality of chain
5	F	86	
6	G	88	
7	H	112	
8	I	112	
9	J	342	
10	K	43	
11	L	125	
12	M	690	
13	N	144	
14	O	217	
15	P	208	
16	Q	386	
17	T	96	
18	W	29	

The following table lists non-polymeric compounds, carbohydrate monomers and non-standard residues in protein, DNA, RNA chains that are outliers for geometric or electron-density-fit criteria:

Mol	Type	Chain	Res	Chirality	Geometry	Clashes	Electron density
19	SF4	M	802	-	-	X	-

2 Entry composition

There are 32 unique types of molecules in this entry. The entry contains 29292 atoms, of which 0 are hydrogens and 0 are deuteriums.

In the tables below, the AltConf column contains the number of residues with at least one atom in alternate conformation and the Trace column contains the number of residues modelled with at most 2 atoms.

- Molecule 1 is a protein called NADH dehydrogenase [ubiquinone] flavoprotein 1, mitochondrial.

Mol	Chain	Residues	Atoms					AltConf	Trace
			Total	C	N	O	S		
1	A	433	3330	2103	593	614	20	0	0

- Molecule 2 is a protein called NADH dehydrogenase [ubiquinone] iron-sulfur protein 8, mitochondrial.

Mol	Chain	Residues	Atoms					AltConf	Trace
			Total	C	N	O	S		
2	B	176	1412	887	243	269	13	0	0

- Molecule 3 is a protein called NADH dehydrogenase [ubiquinone] iron-sulfur protein 7, mitochondrial.

Mol	Chain	Residues	Atoms					AltConf	Trace
			Total	C	N	O	S		
3	C	156	1248	794	227	213	14	0	0

- Molecule 4 is a protein called NADH dehydrogenase [ubiquinone] 1 alpha subcomplex subunit 6.

Mol	Chain	Residues	Atoms					AltConf	Trace
			Total	C	N	O	S		
4	E	115	971	619	179	168	5	0	0

- Molecule 5 is a protein called NADH dehydrogenase [ubiquinone] 1 alpha subcomplex subunit 2.

Mol	Chain	Residues	Atoms					AltConf	Trace
			Total	C	N	O	S		
5	F	86	687	432	129	124	2	0	0

- Molecule 6 is a protein called Acyl carrier protein, mitochondrial.

Mol	Chain	Residues	Atoms					AltConf	Trace
			Total	C	N	O	S		
6	G	88	693	447	102	139	5	0	0

- Molecule 7 is a protein called NADH dehydrogenase [ubiquinone] 1 alpha subcomplex subunit 5.

Mol	Chain	Residues	Atoms					AltConf	Trace
			Total	C	N	O	S		
7	H	112	910	588	154	165	3	0	0

- Molecule 8 is a protein called NADH dehydrogenase [ubiquinone] 1 alpha subcomplex subunit 7.

Mol	Chain	Residues	Atoms					AltConf	Trace
			Total	C	N	O	S		
8	I	97	780	491	147	139	3	0	0

- Molecule 9 is a protein called NADH dehydrogenase ubiquinone 1 alpha subcomplex subunit 9, mitochondrial.

Mol	Chain	Residues	Atoms					AltConf	Trace
			Total	C	N	O	S		
9	J	342	2751	1783	481	478	9	0	0

- Molecule 10 is a protein called NADH dehydrogenase [ubiquinone] flavoprotein 3, mitochondrial.

Mol	Chain	Residues	Atoms					AltConf	Trace
			Total	C	N	O	S		
10	K	43	366	228	68	69	1	0	0

- Molecule 11 is a protein called NADH dehydrogenase [ubiquinone] iron-sulfur protein 4, mitochondrial.

Mol	Chain	Residues	Atoms					AltConf	Trace
			Total	C	N	O	S		
11	L	125	1016	642	181	190	3	0	0

- Molecule 12 is a protein called NADH-ubiquinone oxidoreductase 75 kDa subunit, mitochondrial.

Mol	Chain	Residues	Atoms					AltConf	Trace
			Total	C	N	O	S		
12	M	690	5296	3320	923	1014	39	0	0

- Molecule 13 is a protein called NADH dehydrogenase [ubiquinone] 1 alpha subcomplex subunit 12.

Mol	Chain	Residues	Atoms					AltConf	Trace
			Total	C	N	O	S		
13	N	144	1204	770	218	212	4	0	0

- Molecule 14 is a protein called NADH dehydrogenase [ubiquinone] flavoprotein 2, mitochondrial.

Mol	Chain	Residues	Atoms					AltConf	Trace
			Total	C	N	O	S		
14	O	217	1671	1065	281	315	10	0	0

- Molecule 15 is a protein called NADH dehydrogenase [ubiquinone] iron-sulfur protein 3, mitochondrial.

Mol	Chain	Residues	Atoms					AltConf	Trace
			Total	C	N	O	S		
15	P	208	1738	1124	298	314	2	0	0

- Molecule 16 is a protein called NADH dehydrogenase [ubiquinone] iron-sulfur protein 2, mitochondrial.

Mol	Chain	Residues	Atoms					AltConf	Trace
			Total	C	N	O	S		
16	Q	386	3096	1976	534	563	23	0	0

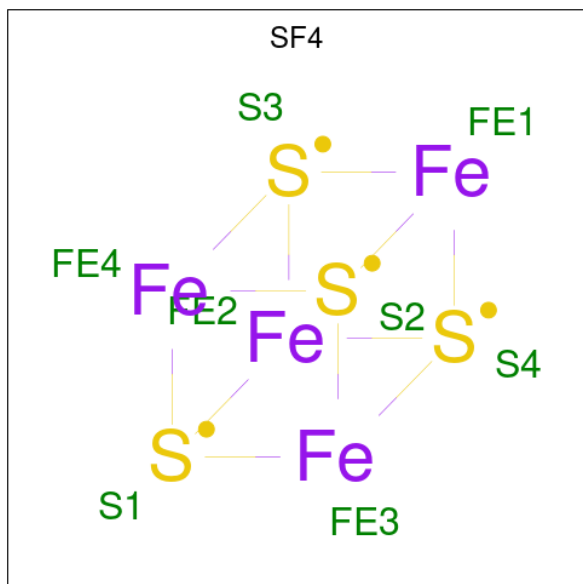
- Molecule 17 is a protein called NADH dehydrogenase [ubiquinone] iron-sulfur protein 6, mitochondrial.

Mol	Chain	Residues	Atoms					AltConf	Trace
			Total	C	N	O	S		
17	T	96	741	452	140	146	3	0	0

- Molecule 18 is a protein called NADH dehydrogenase [ubiquinone] 1 alpha subcomplex subunit 13.

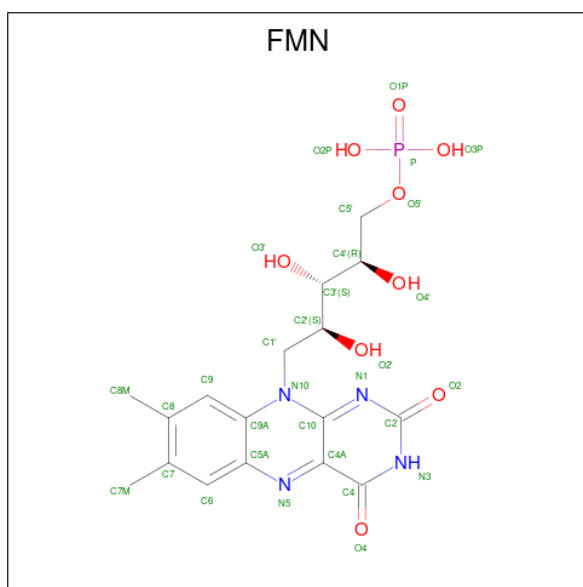
Mol	Chain	Residues	Atoms					AltConf	Trace
			Total	C	N	O	S		
18	W	29	224	141	43	39	1	0	0

- Molecule 19 is IRON/SULFUR CLUSTER (CCD ID: SF4) (formula: Fe₄S₄) (labeled as "Ligand of Interest" by depositor).



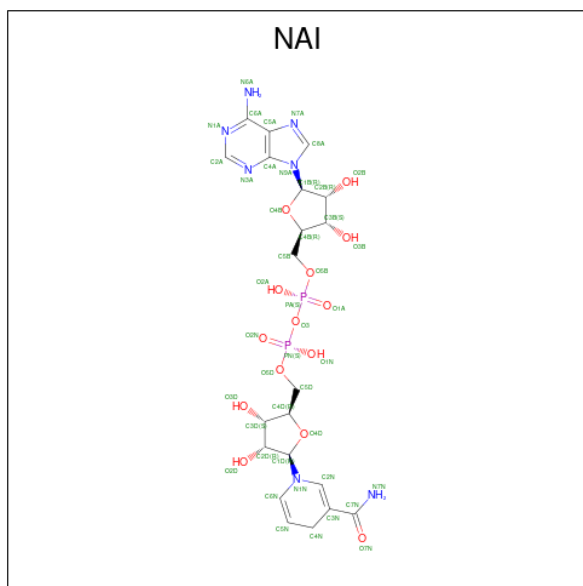
Mol	Chain	Residues	Atoms			AltConf
			Total	Fe	S	
19	A	1	8	4	4	0
19	B	1	8	4	4	0
19	B	1	8	4	4	0
19	C	1	8	4	4	0
19	M	1	8	4	4	0
19	M	1	8	4	4	0

- Molecule 20 is FLAVIN MONONUCLEOTIDE (CCD ID: FMN) (formula: C₁₇H₂₁N₄O₉P) (labeled as "Ligand of Interest" by depositor).



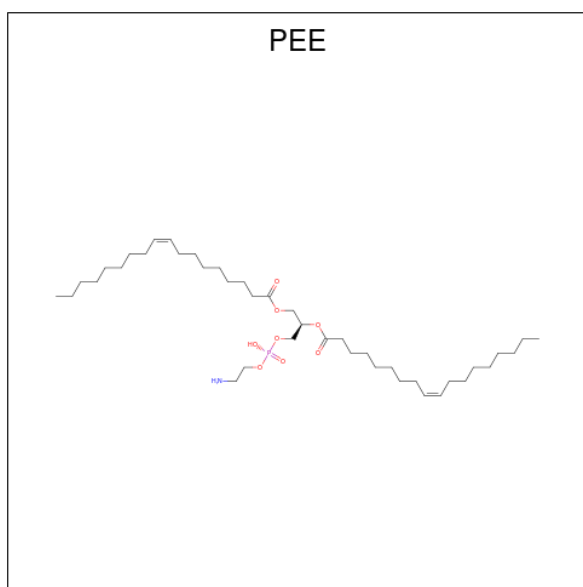
Mol	Chain	Residues	Atoms					AltConf
			Total	C	N	O	P	
20	A	1	31	17	4	9	1	0

- Molecule 21 is 1,4-DIHYDRONICOTINAMIDE ADENINE DINUCLEOTIDE (CCD ID: NAI) (formula: $C_{21}H_{29}N_7O_{14}P_2$) (labeled as "Ligand of Interest" by depositor).



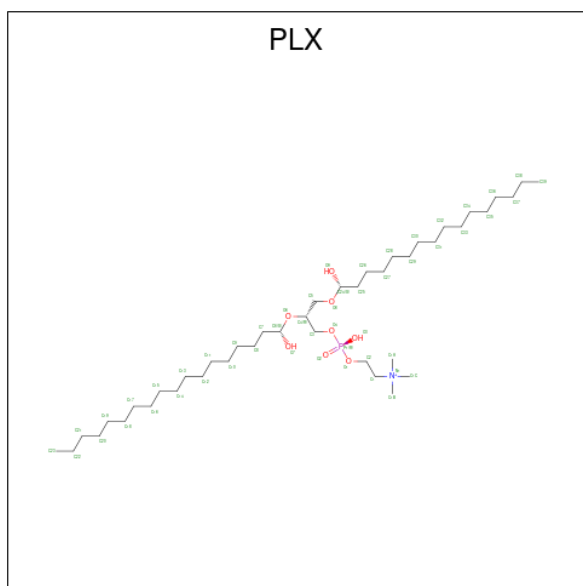
Mol	Chain	Residues	Atoms					AltConf
			Total	C	N	O	P	
21	A	1	44	21	7	14	2	0

- Molecule 22 is 1,2-dioleoyl-sn-glycero-3-phosphoethanolamine (CCD ID: PEE) (formula: $C_{41}H_{78}NO_8P$) (labeled as "Ligand of Interest" by depositor).



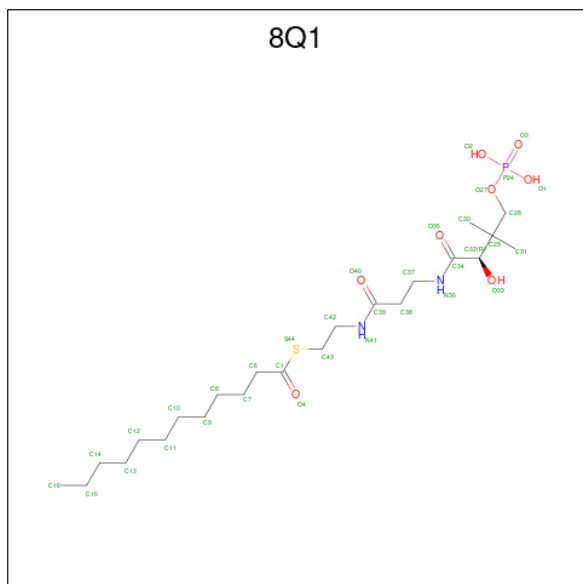
Mol	Chain	Residues	Atoms					AltConf
			Total	C	N	O	P	
22	C	1	47	37	1	8	1	0

- Molecule 23 is (9R,11S)-9-({[(1S)-1-HYDROXYHEXADECYL]OXY}METHYL)-2,2-DIMETHYL-5,7,10-TRIOXA-2LAMBDA 5 -AZA-6LAMBDA 5 -PHOSPHAOCTACOSANE-6,6,11-TRIOXOL (CCD ID: PLX) (formula: C₄₂H₈₉NO₈P) (labeled as "Ligand of Interest" by depositor).



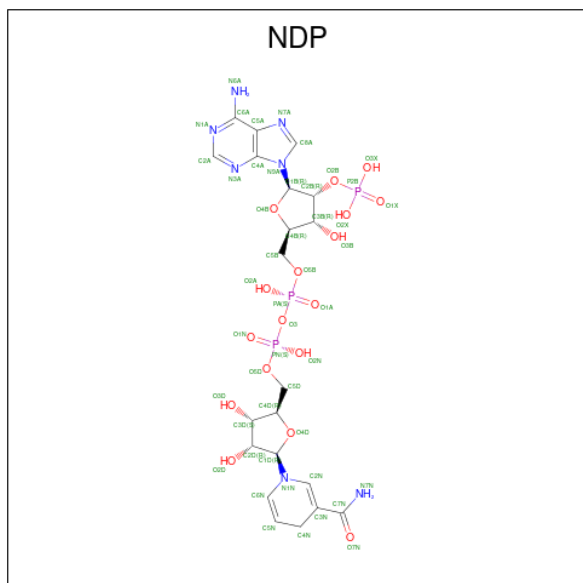
Mol	Chain	Residues	Atoms					AltConf
			Total	C	N	O	P	
23	C	1	52	42	1	8	1	0

- Molecule 24 is S-[2-({N-[(2R)-2-hydroxy-3,3-dimethyl-4-(phosphonoxy)butanoyl]-beta-alanyl}amino)ethyl] dodecanethioate (CCD ID: 8Q1) (formula: $C_{23}H_{45}N_2O_8PS$) (labeled as "Ligand of Interest" by depositor).



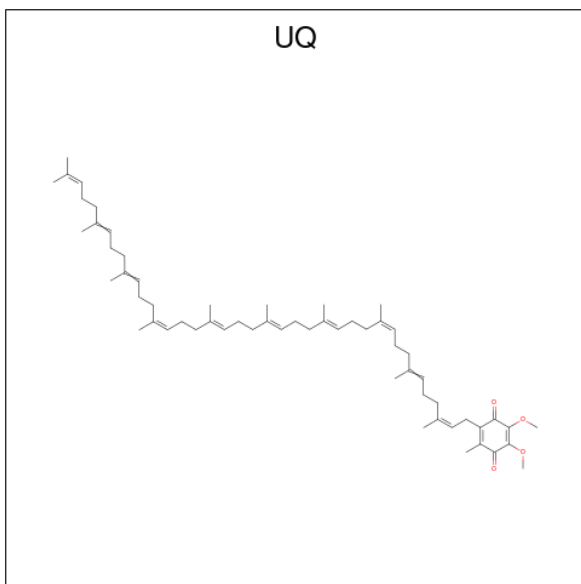
Mol	Chain	Residues	Atoms					AltConf	
			Total	C	N	O	P		S
24	G	1	35	23	2	8	1	1	0

- Molecule 25 is NADPH DIHYDRO-NICOTINAMIDE-ADENINE-DINUCLEOTIDE PHOSPHATE (CCD ID: NDP) (formula: $C_{21}H_{30}N_7O_{17}P_3$) (labeled as "Ligand of Interest" by depositor).



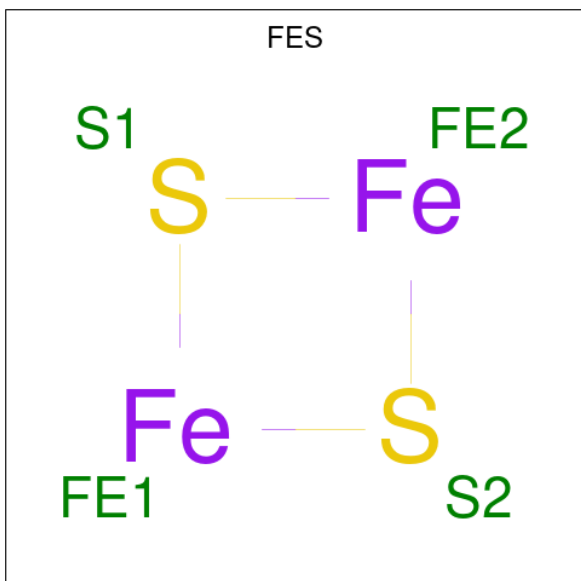
Mol	Chain	Residues	Atoms					AltConf
			Total	C	N	O	P	
25	J	1	48	21	7	17	3	0

- Molecule 26 is Coenzyme Q10, (2Z,6E,10Z,14E,18E,22E,26Z)-isomer (CCD ID: UQ) (formula: $C_{59}H_{90}O_4$) (labeled as "Ligand of Interest" by depositor).



Mol	Chain	Residues	Atoms			AltConf
			Total	C	O	
26	J	1	33	29	4	0

- Molecule 27 is FE2/S2 (INORGANIC) CLUSTER (CCD ID: FES) (formula: Fe_2S_2) (labeled as "Ligand of Interest" by depositor).

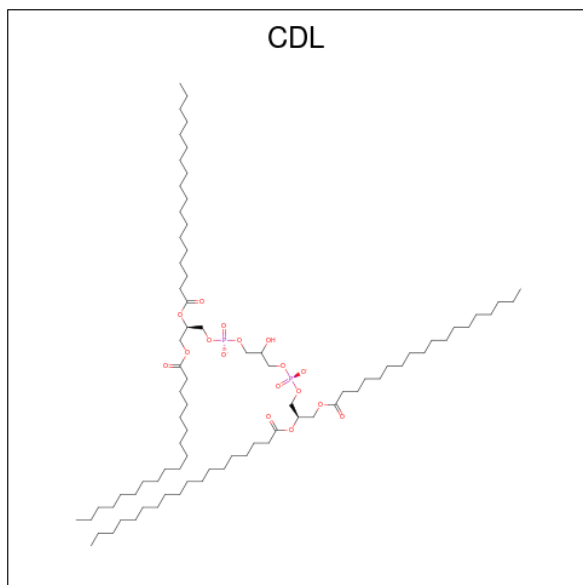


Mol	Chain	Residues	Atoms			AltConf
27	M	1	Total	Fe	S	0
			4	2	2	
27	O	1	Total	Fe	S	0
			4	2	2	

- Molecule 28 is MAGNESIUM ION (CCD ID: MG) (formula: Mg) (labeled as "Ligand of Interest" by depositor).

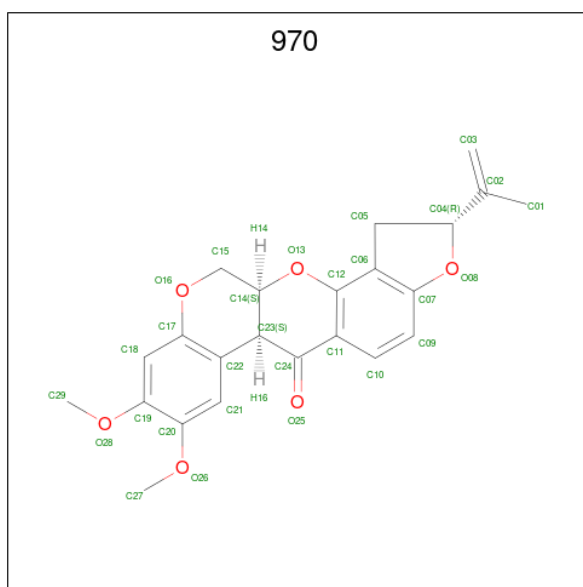
Mol	Chain	Residues	Atoms		AltConf
28	M	1	Total	Mg	0
			1	1	

- Molecule 29 is CARDIOLIPIN (CCD ID: CDL) (formula: C₈₁H₁₅₆O₁₇P₂) (labeled as "Ligand of Interest" by depositor).



Mol	Chain	Residues	Atoms				AltConf
29	N	1	Total	C	O	P	0
			51	32	17	2	

- Molecule 30 is (2R,6aS,12aS)-8,9-dimethoxy-2-(prop-1-en-2-yl)-1,2,12,12a-tetrahydrofuro[2',3':7,8][1]benzopyrano[2,3-c][1]benzopyran-6(6aH)-one (CCD ID: 970) (formula: C₂₃H₂₂O₆) (labeled as "Ligand of Interest" by depositor).



Mol	Chain	Residues	Atoms		AltConf
30	Q	1	Total	C O	0
			29	23 6	

- Molecule 31 is ZINC ION (CCD ID: ZN) (formula: Zn) (labeled as "Ligand of Interest" by depositor).

Mol	Chain	Residues	Atoms		AltConf
31	T	1	Total	Zn	0
			1	1	

- Molecule 32 is water.

Mol	Chain	Residues	Atoms		AltConf
32	A	56	Total	O	0
			56	56	
32	B	82	Total	O	0
			82	82	
32	C	56	Total	O	0
			56	56	
32	E	3	Total	O	0
			3	3	
32	F	1	Total	O	0
			1	1	
32	H	4	Total	O	0
			4	4	
32	I	18	Total	O	0
			18	18	

Continued on next page...

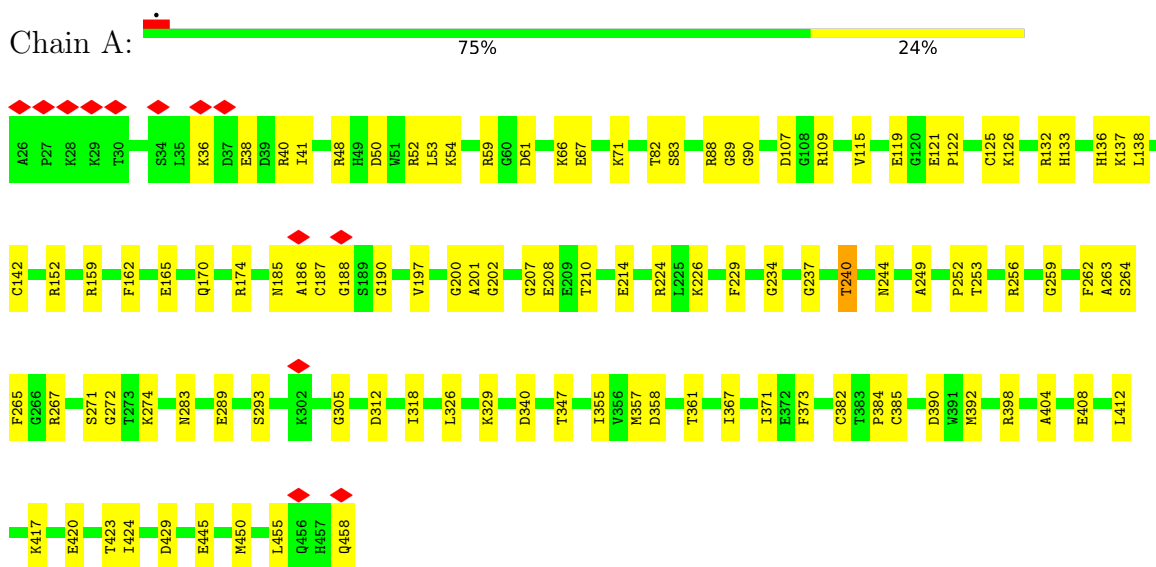
Continued from previous page...

Mol	Chain	Residues	Atoms		AltConf
32	J	7	Total 7	O 7	0
32	K	5	Total 5	O 5	0
32	L	24	Total 24	O 24	0
32	M	186	Total 186	O 186	0
32	N	7	Total 7	O 7	0
32	O	15	Total 15	O 15	0
32	P	79	Total 79	O 79	0
32	Q	179	Total 179	O 179	0
32	T	6	Total 6	O 6	0
32	W	2	Total 2	O 2	0

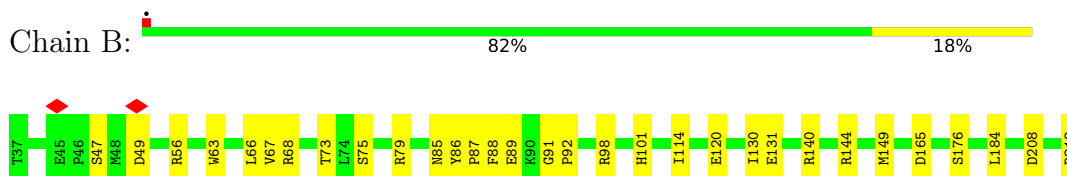
3 Residue-property plots [i](#)

These plots are drawn for all protein, RNA, DNA and oligosaccharide chains in the entry. The first graphic for a chain summarises the proportions of the various outlier classes displayed in the second graphic. The second graphic shows the sequence view annotated by issues in geometry and atom inclusion in map density. Residues are color-coded according to the number of geometric quality criteria for which they contain at least one outlier: green = 0, yellow = 1, orange = 2 and red = 3 or more. A red diamond above a residue indicates a poor fit to the EM map for this residue (all-atom inclusion < 40%). Stretches of 2 or more consecutive residues without any outlier are shown as a green connector. Residues present in the sample, but not in the model, are shown in grey.

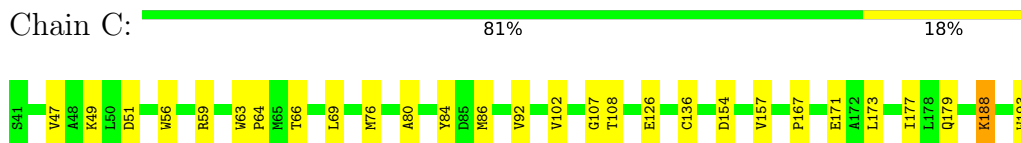
- Molecule 1: NADH dehydrogenase [ubiquinone] flavoprotein 1, mitochondrial



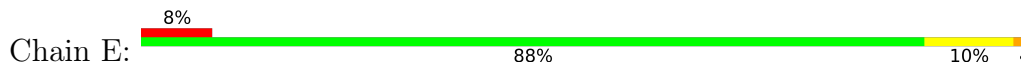
- Molecule 2: NADH dehydrogenase [ubiquinone] iron-sulfur protein 8, mitochondrial



- Molecule 3: NADH dehydrogenase [ubiquinone] iron-sulfur protein 7, mitochondrial

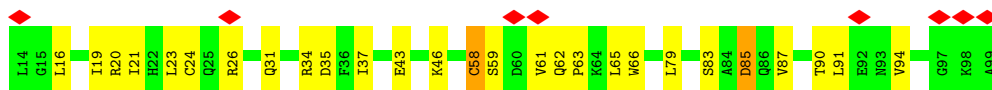


- Molecule 4: NADH dehydrogenase [ubiquinone] 1 alpha subcomplex subunit 6

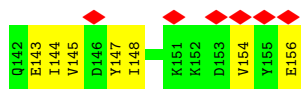
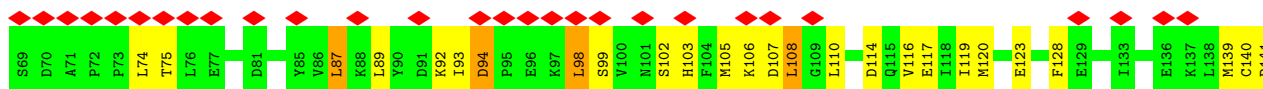
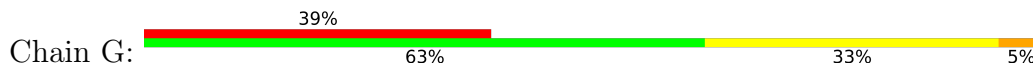




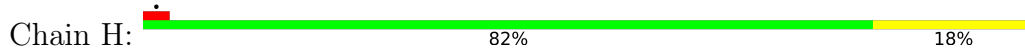
- Molecule 5: NADH dehydrogenase [ubiquinone] 1 alpha subcomplex subunit 2



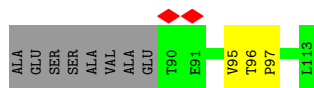
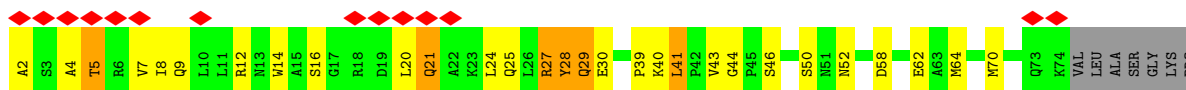
- Molecule 6: Acyl carrier protein, mitochondrial



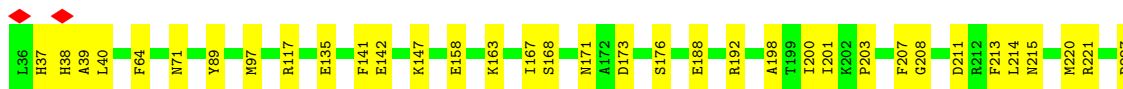
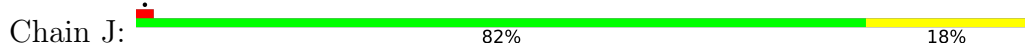
- Molecule 7: NADH dehydrogenase [ubiquinone] 1 alpha subcomplex subunit 5



- Molecule 8: NADH dehydrogenase [ubiquinone] 1 alpha subcomplex subunit 7

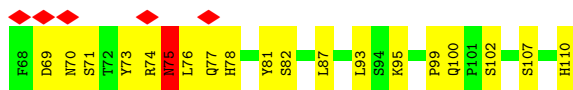


- Molecule 9: NADH dehydrogenase ubiquinone 1 alpha subcomplex subunit 9, mitochondrial

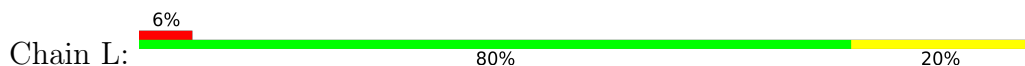




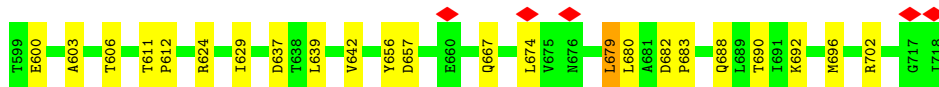
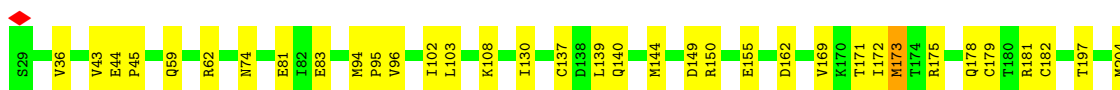
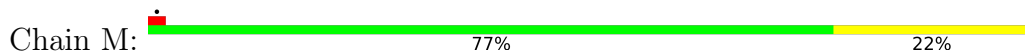
- Molecule 10: NADH dehydrogenase [ubiquinone] flavoprotein 3, mitochondrial



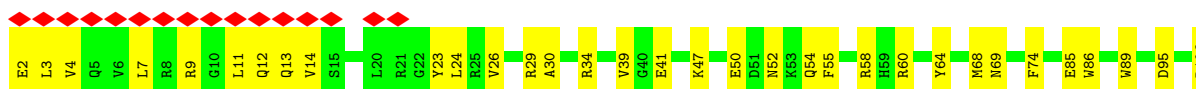
- Molecule 11: NADH dehydrogenase [ubiquinone] iron-sulfur protein 4, mitochondrial



- Molecule 12: NADH-ubiquinone oxidoreductase 75 kDa subunit, mitochondrial

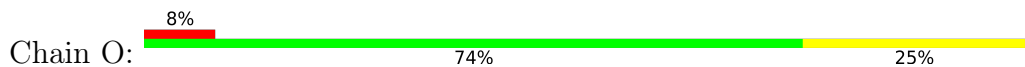


- Molecule 13: NADH dehydrogenase [ubiquinone] 1 alpha subcomplex subunit 12

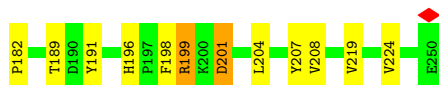
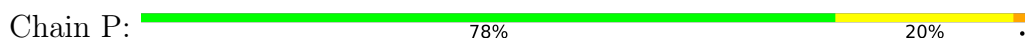




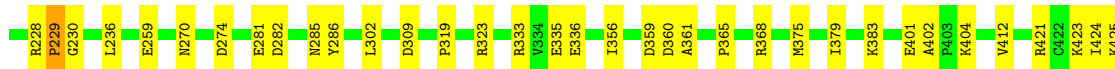
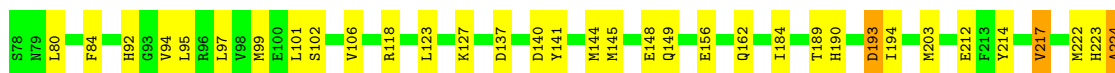
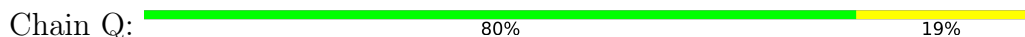
- Molecule 14: NADH dehydrogenase [ubiquinone] flavoprotein 2, mitochondrial



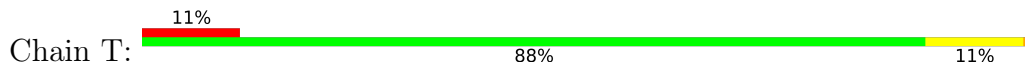
- Molecule 15: NADH dehydrogenase [ubiquinone] iron-sulfur protein 3, mitochondrial



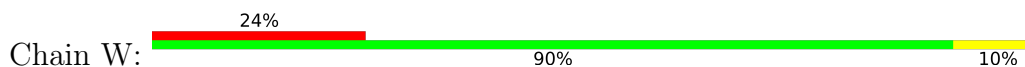
- Molecule 16: NADH dehydrogenase [ubiquinone] iron-sulfur protein 2, mitochondrial

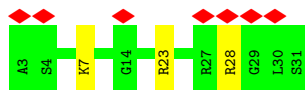


- Molecule 17: NADH dehydrogenase [ubiquinone] iron-sulfur protein 6, mitochondrial



- Molecule 18: NADH dehydrogenase [ubiquinone] 1 alpha subcomplex subunit 13





4 Experimental information

Property	Value	Source
EM reconstruction method	SINGLE PARTICLE	Depositor
Imposed symmetry	POINT, Not provided	
Number of particles used	326044	Depositor
Resolution determination method	FSC 0.143 CUT-OFF	Depositor
CTF correction method	PHASE FLIPPING AND AMPLITUDE CORRECTION	Depositor
Microscope	FEI TITAN KRIOS	Depositor
Voltage (kV)	300	Depositor
Electron dose ($e^-/\text{\AA}^2$)	50	Depositor
Minimum defocus (nm)	1300	Depositor
Maximum defocus (nm)	1800	Depositor
Magnification	Not provided	
Image detector	GATAN K3 (6k x 4k)	Depositor
Maximum map value	0.109	Depositor
Minimum map value	-0.057	Depositor
Average map value	0.000	Depositor
Map value standard deviation	0.003	Depositor
Recommended contour level	0.0152	Depositor
Map size (Å)	274.9952, 274.9952, 274.9952	wwPDB
Map dimensions	512, 512, 512	wwPDB
Map angles (°)	90.0, 90.0, 90.0	wwPDB
Pixel spacing (Å)	0.5371, 0.5371, 0.5371	Depositor

5 Model quality i

5.1 Standard geometry i

Bond lengths and bond angles in the following residue types are not validated in this section: PLX, 2MR, NAI, NDP, 8Q1, SF4, ZN, MG, 970, UQ, PEE, CDL, FES, FMN

The Z score for a bond length (or angle) is the number of standard deviations the observed value is removed from the expected value. A bond length (or angle) with $|Z| > 5$ is considered an outlier worth inspection. RMSZ is the root-mean-square of all Z scores of the bond lengths (or angles).

Mol	Chain	Bond lengths		Bond angles	
		RMSZ	# Z >5	RMSZ	# Z >5
1	A	0.24	0/3406	0.46	0/4603
2	B	0.24	0/1443	0.40	0/1952
3	C	0.27	0/1279	0.42	0/1730
4	E	0.22	0/995	0.44	1/1340 (0.1%)
5	F	0.20	0/698	0.37	0/940
6	G	0.21	0/705	0.55	1/956 (0.1%)
7	H	0.23	0/929	0.53	0/1258
8	I	0.27	0/798	0.67	1/1079 (0.1%)
9	J	0.22	0/2828	0.41	0/3834
10	K	0.28	0/377	0.55	1/509 (0.2%)
11	L	0.23	0/1039	0.38	0/1403
12	M	0.29	0/5384	0.61	7/7295 (0.1%)
13	N	0.20	0/1245	0.38	0/1694
14	O	0.22	0/1711	0.50	0/2328
15	P	0.30	0/1789	0.61	2/2436 (0.1%)
16	Q	0.39	3/3157 (0.1%)	0.56	6/4268 (0.1%)
17	T	0.23	0/755	0.42	0/1018
18	W	0.23	0/230	0.65	0/309
All	All	0.27	3/28768 (0.0%)	0.51	19/38952 (0.0%)

All (3) bond length outliers are listed below:

Mol	Chain	Res	Type	Atoms	Z	Observed(Å)	Ideal(Å)
16	Q	193	ASP	C-N	8.60	1.44	1.33
16	Q	141	TYR	C-N	-7.95	1.25	1.33
16	Q	140	ASP	C-N	6.66	1.45	1.33

The worst 5 of 19 bond angle outliers are listed below:

Mol	Chain	Res	Type	Atoms	Z	Observed(°)	Ideal(°)
12	M	74	ASN	N-CA-C	9.80	122.05	111.36

Continued on next page...

Continued from previous page...

Mol	Chain	Res	Type	Atoms	Z	Observed(°)	Ideal(°)
8	I	28	TYR	N-CA-C	9.47	121.69	111.36
16	Q	193	ASP	O-C-N	7.12	129.78	122.09
6	G	106	LYS	N-CA-C	7.01	118.71	111.14
12	M	173	MET	N-CA-C	6.67	120.52	112.38

There are no chirality outliers.

There are no planarity outliers.

5.2 Too-close contacts [i](#)

In the following table, the Non-H and H(model) columns list the number of non-hydrogen atoms and hydrogen atoms in the chain respectively. The H(added) column lists the number of hydrogen atoms added and optimized by MolProbity. The Clashes column lists the number of clashes within the asymmetric unit, whereas Symm-Clashes lists symmetry-related clashes.

Mol	Chain	Non-H	H(model)	H(added)	Clashes	Symm-Clashes
1	A	3330	0	3292	80	0
2	B	1412	0	1363	26	0
3	C	1248	0	1254	26	0
4	E	971	0	975	16	0
5	F	687	0	700	21	0
6	G	693	0	671	35	0
7	H	910	0	950	15	0
8	I	780	0	808	36	0
9	J	2751	0	2773	47	0
10	K	366	0	338	20	0
11	L	1016	0	1016	20	0
12	M	5296	0	5328	119	0
13	N	1204	0	1162	35	0
14	O	1671	0	1674	44	0
15	P	1738	0	1693	50	0
16	Q	3096	0	3063	68	0
17	T	741	0	702	8	0
18	W	224	0	230	6	0
19	A	8	0	0	1	0
19	B	16	0	0	0	0
19	C	8	0	0	1	0
19	M	16	0	0	2	0
20	A	31	0	19	4	0
21	A	44	0	27	5	0
22	C	47	0	71	7	0

Continued on next page...

Continued from previous page...

Mol	Chain	Non-H	H(model)	H(added)	Clashes	Symm-Clashes
23	C	52	0	88	13	0
24	G	35	0	0	0	0
25	J	48	0	23	3	0
26	J	33	0	39	7	0
27	M	4	0	0	0	0
27	O	4	0	0	0	0
28	M	1	0	0	0	0
29	N	51	0	46	18	0
30	Q	29	0	0	1	0
31	T	1	0	0	0	0
32	A	56	0	0	7	0
32	B	82	0	0	2	0
32	C	56	0	0	2	0
32	E	3	0	0	0	0
32	F	1	0	0	0	0
32	H	4	0	0	0	0
32	I	18	0	0	4	0
32	J	7	0	0	0	0
32	K	5	0	0	3	0
32	L	24	0	0	0	0
32	M	186	0	0	10	0
32	N	7	0	0	2	0
32	O	15	0	0	1	0
32	P	79	0	0	3	0
32	Q	179	0	0	22	0
32	T	6	0	0	0	0
32	W	2	0	0	0	0
All	All	29292	0	28305	633	0

The all-atom clashscore is defined as the number of clashes found per 1000 atoms (including hydrogen atoms). The all-atom clashscore for this structure is 11.

The worst 5 of 633 close contacts within the same asymmetric unit are listed below, sorted by their clash magnitude.

Atom-1	Atom-2	Interatomic distance (Å)	Clash overlap (Å)
9:J:220:MET:CE	9:J:227:PRO:HD2	1.58	1.33
12:M:379:THR:HG21	32:M:1006:HOH:O	1.28	1.29
21:A:503:NAI:C1B	21:A:503:NAI:O4B	1.63	1.24
6:G:105:MET:HG2	6:G:139:MET:CE	1.68	1.23
25:J:401:NDP:O4D	25:J:401:NDP:C4D	1.69	1.22

There are no symmetry-related clashes.

5.3 Torsion angles [i](#)

5.3.1 Protein backbone [i](#)

In the following table, the Percentiles column shows the percent Ramachandran outliers of the chain as a percentile score with respect to all PDB entries followed by that with respect to all EM entries.

The Analysed column shows the number of residues for which the backbone conformation was analysed, and the total number of residues.

Mol	Chain	Analysed	Favoured	Allowed	Outliers	Percentiles	
1	A	431/433 (100%)	412 (96%)	17 (4%)	2 (0%)	24	37
2	B	174/176 (99%)	171 (98%)	3 (2%)	0	100	100
3	C	154/156 (99%)	145 (94%)	9 (6%)	0	100	100
4	E	113/115 (98%)	108 (96%)	4 (4%)	1 (1%)	14	22
5	F	84/86 (98%)	80 (95%)	4 (5%)	0	100	100
6	G	86/88 (98%)	80 (93%)	6 (7%)	0	100	100
7	H	110/112 (98%)	105 (96%)	4 (4%)	1 (1%)	14	22
8	I	93/112 (83%)	83 (89%)	8 (9%)	2 (2%)	5	6
9	J	340/342 (99%)	329 (97%)	10 (3%)	1 (0%)	36	50
10	K	41/43 (95%)	39 (95%)	1 (2%)	1 (2%)	4	5
11	L	123/125 (98%)	121 (98%)	2 (2%)	0	100	100
12	M	688/690 (100%)	666 (97%)	22 (3%)	0	100	100
13	N	142/144 (99%)	138 (97%)	4 (3%)	0	100	100
14	O	215/217 (99%)	204 (95%)	10 (5%)	1 (0%)	24	37
15	P	206/208 (99%)	196 (95%)	10 (5%)	0	100	100
16	Q	383/386 (99%)	371 (97%)	11 (3%)	1 (0%)	36	50
17	T	94/96 (98%)	93 (99%)	1 (1%)	0	100	100
18	W	27/29 (93%)	23 (85%)	4 (15%)	0	100	100
All	All	3504/3558 (98%)	3364 (96%)	130 (4%)	10 (0%)	37	50

5 of 10 Ramachandran outliers are listed below:

Mol	Chain	Res	Type
10	K	75	ASN

Continued on next page...

Continued from previous page...

Mol	Chain	Res	Type
1	A	264	SER
8	I	29	GLN
9	J	38	HIS
7	H	77	ILE

5.3.2 Protein sidechains [i](#)

In the following table, the Percentiles column shows the percent sidechain outliers of the chain as a percentile score with respect to all PDB entries followed by that with respect to all EM entries.

The Analysed column shows the number of residues for which the sidechain conformation was analysed, and the total number of residues.

Mol	Chain	Analysed	Rotameric	Outliers	Percentiles	
1	A	346/346 (100%)	341 (99%)	5 (1%)	59	79
2	B	151/151 (100%)	150 (99%)	1 (1%)	76	88
3	C	132/132 (100%)	130 (98%)	2 (2%)	57	77
4	E	107/107 (100%)	105 (98%)	2 (2%)	50	71
5	F	75/76 (99%)	73 (97%)	2 (3%)	39	62
6	G	76/81 (94%)	69 (91%)	7 (9%)	8	14
7	H	99/99 (100%)	99 (100%)	0	100	100
8	I	87/97 (90%)	81 (93%)	6 (7%)	14	24
9	J	296/296 (100%)	295 (100%)	1 (0%)	86	93
10	K	42/42 (100%)	41 (98%)	1 (2%)	43	65
11	L	113/113 (100%)	110 (97%)	3 (3%)	39	62
12	M	580/580 (100%)	570 (98%)	10 (2%)	53	74
13	N	130/130 (100%)	125 (96%)	5 (4%)	29	49
14	O	183/183 (100%)	177 (97%)	6 (3%)	33	55
15	P	190/190 (100%)	184 (97%)	6 (3%)	34	56
16	Q	332/332 (100%)	328 (99%)	4 (1%)	63	81
17	T	79/79 (100%)	77 (98%)	2 (2%)	42	64
18	W	24/24 (100%)	24 (100%)	0	100	100
All	All	3042/3058 (100%)	2979 (98%)	63 (2%)	46	69

5 of 63 residues with a non-rotameric sidechain are listed below:

Mol	Chain	Res	Type
11	L	152	VAL
15	P	199	ARG
12	M	470	LYS
15	P	110	SER
16	Q	336	GLU

Sometimes sidechains can be flipped to improve hydrogen bonding and reduce clashes. 5 of 36 such sidechains are listed below:

Mol	Chain	Res	Type
15	P	82	ASN
17	T	123	HIS
15	P	181	HIS
16	Q	183	HIS
12	M	133	GLN

5.3.3 RNA [i](#)

There are no RNA molecules in this entry.

5.4 Non-standard residues in protein, DNA, RNA chains [i](#)

1 non-standard protein/DNA/RNA residue is modelled in this entry.

In the following table, the Counts columns list the number of bonds (or angles) for which Mogul statistics could be retrieved, the number of bonds (or angles) that are observed in the model and the number of bonds (or angles) that are defined in the Chemical Component Dictionary. The Link column lists molecule types, if any, to which the group is linked. The Z score for a bond length (or angle) is the number of standard deviations the observed value is removed from the expected value. A bond length (or angle) with $|Z| > 2$ is considered an outlier worth inspection. RMSZ is the root-mean-square of all Z scores of the bond lengths (or angles).

Mol	Type	Chain	Res	Link	Bond lengths			Bond angles		
					Counts	RMSZ	# Z > 2	Counts	RMSZ	# Z > 2
16	2MR	Q	118	16	10,12,13	2.03	2 (20%)	5,13,15	6.15	3 (60%)

In the following table, the Chirals column lists the number of chiral outliers, the number of chiral centers analysed, the number of these observed in the model and the number defined in the Chemical Component Dictionary. Similar counts are reported in the Torsion and Rings columns. '?' means no outliers of that kind were identified.

Mol	Type	Chain	Res	Link	Chirals	Torsions	Rings
16	2MR	Q	118	16	-	3/10/13/15	-

All (2) bond length outliers are listed below:

Mol	Chain	Res	Type	Atoms	Z	Observed(Å)	Ideal(Å)
16	Q	118	2MR	CZ-NE	5.61	1.46	1.34
16	Q	118	2MR	CQ2-NH2	-2.05	1.42	1.45

All (3) bond angle outliers are listed below:

Mol	Chain	Res	Type	Atoms	Z	Observed(°)	Ideal(°)
16	Q	118	2MR	NE-CZ-NH2	12.43	130.87	119.48
16	Q	118	2MR	CD-NE-CZ	4.44	131.70	123.36
16	Q	118	2MR	CQ2-NH2-CZ	3.42	131.00	123.65

There are no chirality outliers.

All (3) torsion outliers are listed below:

Mol	Chain	Res	Type	Atoms
16	Q	118	2MR	NE-CD-CG-CB
16	Q	118	2MR	CA-CB-CG-CD
16	Q	118	2MR	CG-CD-NE-CZ

There are no ring outliers.

No monomer is involved in short contacts.

5.5 Carbohydrates [i](#)

There are no oligosaccharides in this entry.

5.6 Ligand geometry [i](#)

Of 19 ligands modelled in this entry, 2 are monoatomic - leaving 17 for Mogul analysis.

In the following table, the Counts columns list the number of bonds (or angles) for which Mogul statistics could be retrieved, the number of bonds (or angles) that are observed in the model and the number of bonds (or angles) that are defined in the Chemical Component Dictionary. The Link column lists molecule types, if any, to which the group is linked. The Z score for a bond length (or angle) is the number of standard deviations the observed value is removed from the expected value. A bond length (or angle) with $|Z| > 2$ is considered an outlier worth inspection. RMSZ is the root-mean-square of all Z scores of the bond lengths (or angles).

Mol	Type	Chain	Res	Link	Bond lengths			Bond angles		
					Counts	RMSZ	# Z > 2	Counts	RMSZ	# Z > 2
24	8Q1	G	201	-	32,34,34	2.29	7 (21%)	39,43,43	1.84	12 (30%)
26	UQ	J	402	-	33,33,63	3.50	9 (27%)	42,43,79	2.80	14 (33%)
27	FES	M	803	12	0,4,4	-	-	-	-	-
19	SF4	M	802	12	0,12,12	-	-	-	-	-
20	FMN	A	502	-	33,33,33	1.10	2 (6%)	48,50,50	1.29	8 (16%)
22	PEE	C	302	-	46,46,50	1.22	6 (13%)	49,51,55	1.01	2 (4%)
21	NAI	A	503	-	47,48,48	4.00	22 (46%)	64,73,73	1.68	12 (18%)
19	SF4	B	301	2	0,12,12	-	-	-	-	-
19	SF4	B	302	2	0,12,12	-	-	-	-	-
27	FES	O	301	14	0,4,4	-	-	-	-	-
19	SF4	M	801	12	0,12,12	-	-	-	-	-
30	970	Q	501	-	33,33,33	4.85	14 (42%)	48,50,50	2.45	22 (45%)
29	CDL	N	201	-	50,50,99	1.29	4 (8%)	56,62,111	1.29	6 (10%)
19	SF4	A	501	1	0,12,12	-	-	-	-	-
25	NDP	J	401	-	51,52,52	4.26	25 (49%)	71,80,80	2.16	12 (16%)
19	SF4	C	301	3	0,12,12	-	-	-	-	-
23	PLX	C	303	-	51,51,51	0.60	0	53,59,59	0.75	0

In the following table, the Chirals column lists the number of chiral outliers, the number of chiral centers analysed, the number of these observed in the model and the number defined in the Chemical Component Dictionary. Similar counts are reported in the Torsion and Rings columns. '-' means no outliers of that kind were identified.

Mol	Type	Chain	Res	Link	Chirals	Torsions	Rings
24	8Q1	G	201	-	-	17/41/41/41	-
26	UQ	J	402	-	-	14/27/51/87	0/1/1/1
27	FES	M	803	12	-	-	0/1/1/1
20	FMN	A	502	-	-	8/18/18/18	0/3/3/3
19	SF4	M	802	12	-	-	0/6/5/5
22	PEE	C	302	-	-	36/50/50/54	-
21	NAI	A	503	-	-	7/29/72/72	0/5/5/5
19	SF4	B	301	2	-	-	0/6/5/5
19	SF4	B	302	2	-	-	0/6/5/5
27	FES	O	301	14	-	-	0/1/1/1
30	970	Q	501	-	-	7/8/41/41	0/5/5/5
19	SF4	M	801	12	-	-	0/6/5/5
29	CDL	N	201	-	-	37/61/61/110	-
19	SF4	A	501	1	-	-	0/6/5/5
25	NDP	J	401	-	-	5/34/77/77	0/5/5/5

Continued on next page...

Continued from previous page...

Mol	Type	Chain	Res	Link	Chirals	Torsions	Rings
19	SF4	C	301	3	-	-	0/6/5/5
23	PLX	C	303	-	-	13/55/55/55	-

The worst 5 of 89 bond length outliers are listed below:

Mol	Chain	Res	Type	Atoms	Z	Observed(Å)	Ideal(Å)
30	Q	501	970	O16-C17	18.65	1.58	1.37
25	J	401	NDP	C3B-C2B	-12.65	1.25	1.53
30	Q	501	970	C14-C23	-12.08	1.41	1.52
25	J	401	NDP	O4D-C4D	10.85	1.69	1.45
21	A	503	NAI	C3D-C4D	-10.35	1.26	1.53

The worst 5 of 88 bond angle outliers are listed below:

Mol	Chain	Res	Type	Atoms	Z	Observed(°)	Ideal(°)
26	J	402	UQ	C7-C8-C9	-7.93	113.16	126.83
30	Q	501	970	O08-C07-C06	-7.83	108.33	112.99
25	J	401	NDP	C3N-C2N-N1N	-7.75	111.83	123.20
25	J	401	NDP	C1D-N1N-C2N	-6.83	109.88	121.14
26	J	402	UQ	C12-C13-C14	-6.74	112.20	127.62

There are no chirality outliers.

5 of 144 torsion outliers are listed below:

Mol	Chain	Res	Type	Atoms
20	A	502	FMN	N10-C1'-C2'-O2'
20	A	502	FMN	N10-C1'-C2'-C3'
20	A	502	FMN	C3'-C4'-C5'-O5'
20	A	502	FMN	O4'-C4'-C5'-O5'
21	A	503	NAI	C5B-O5B-PA-O1A

There are no ring outliers.

11 monomers are involved in 61 short contacts:

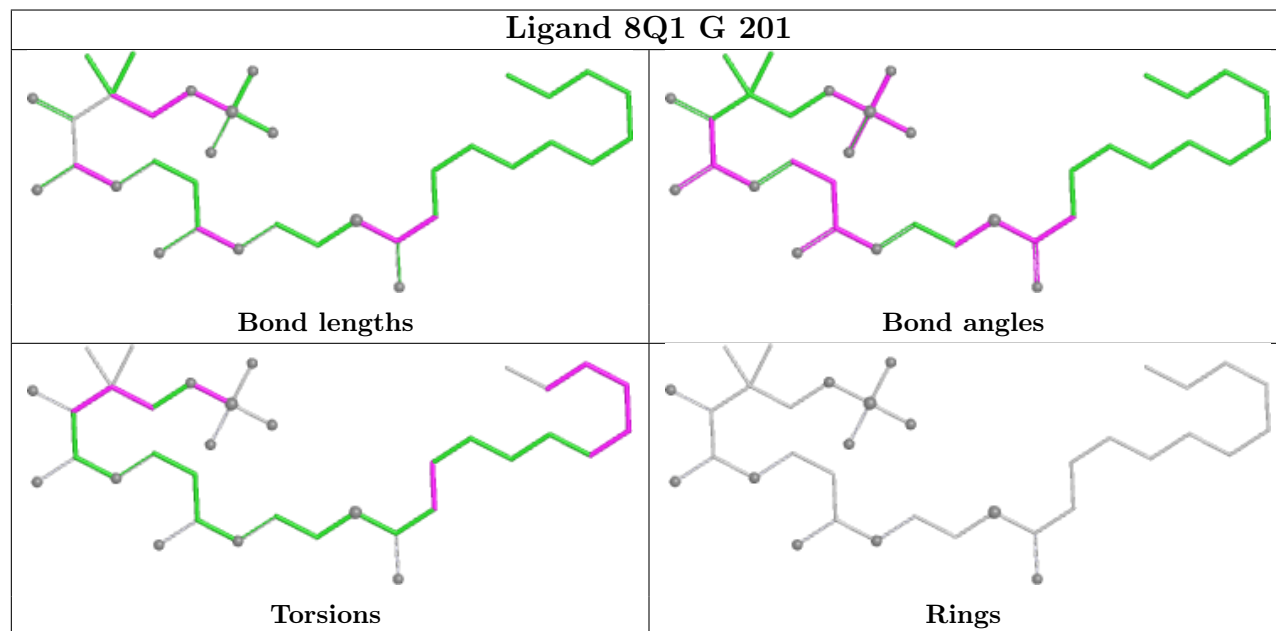
Mol	Chain	Res	Type	Clashes	Symm-Clashes
26	J	402	UQ	7	0
19	M	802	SF4	2	0
20	A	502	FMN	4	0
22	C	302	PEE	7	0
21	A	503	NAI	5	0
30	Q	501	970	1	0

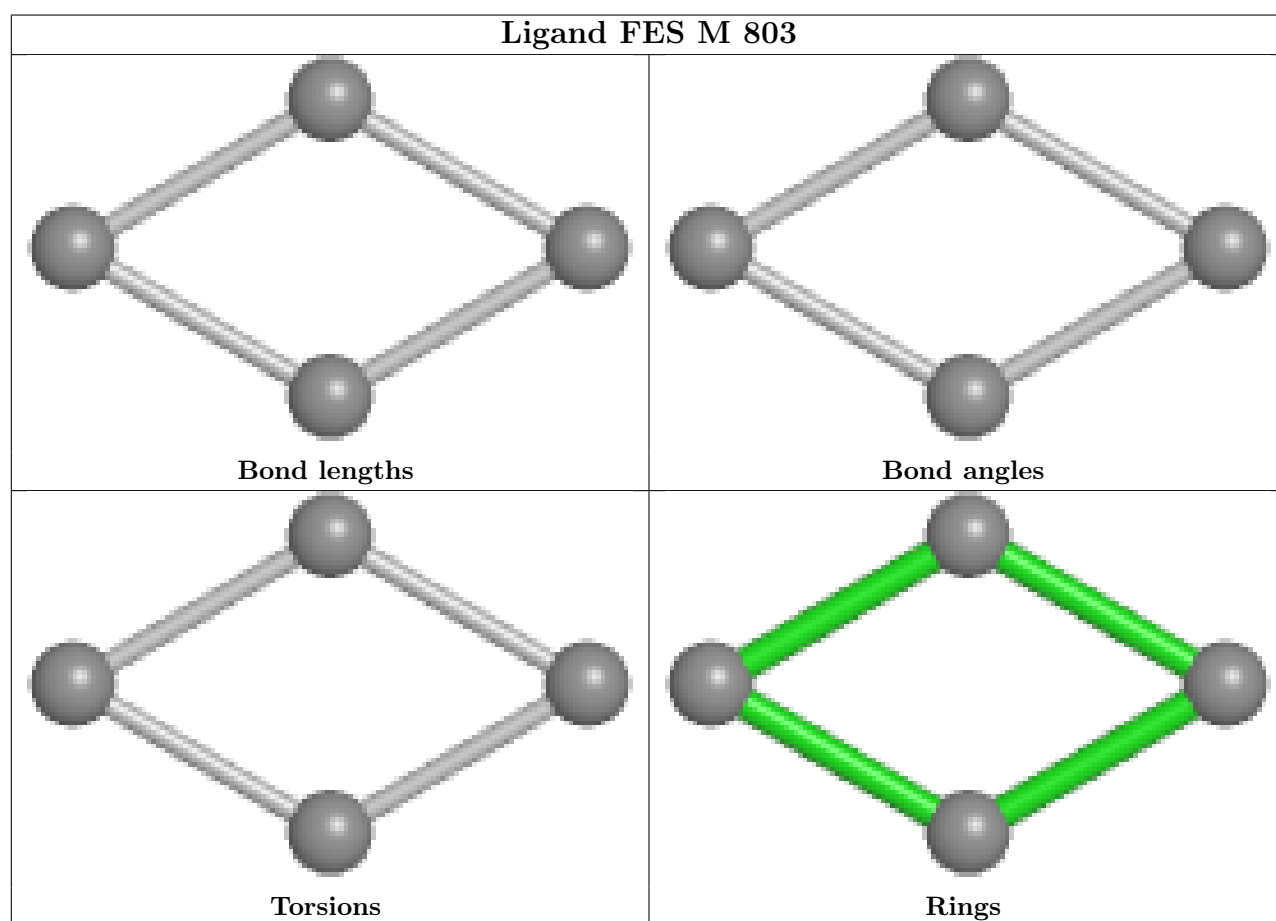
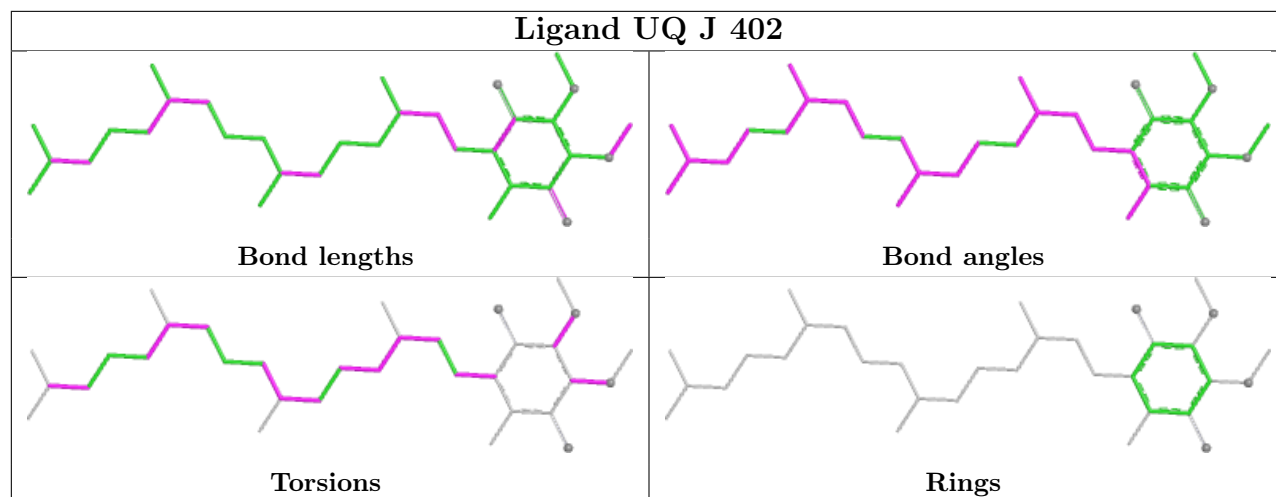
Continued on next page...

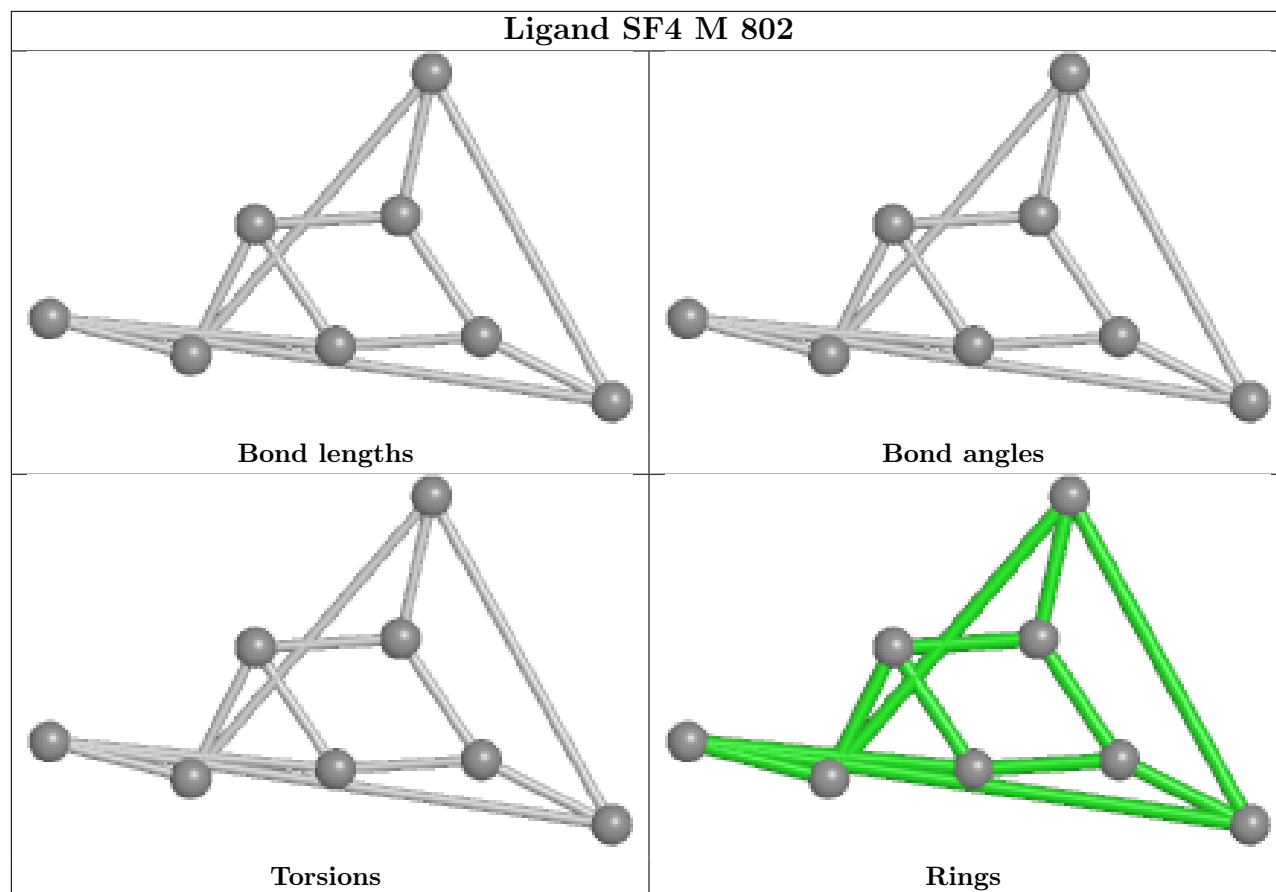
Continued from previous page...

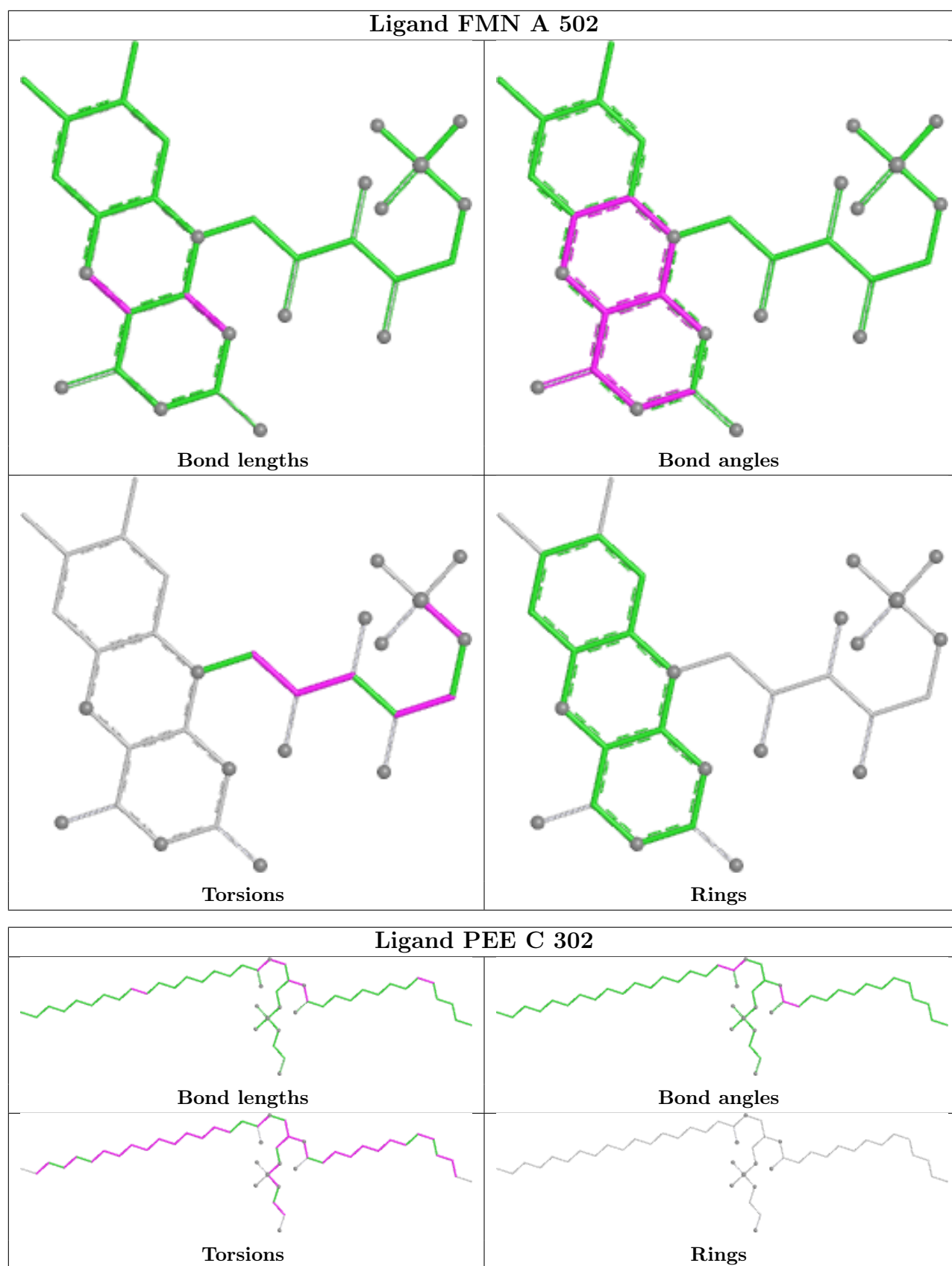
Mol	Chain	Res	Type	Clashes	Symm-Clashes
29	N	201	CDL	18	0
19	A	501	SF4	1	0
25	J	401	NDP	3	0
19	C	301	SF4	1	0
23	C	303	PLX	13	0

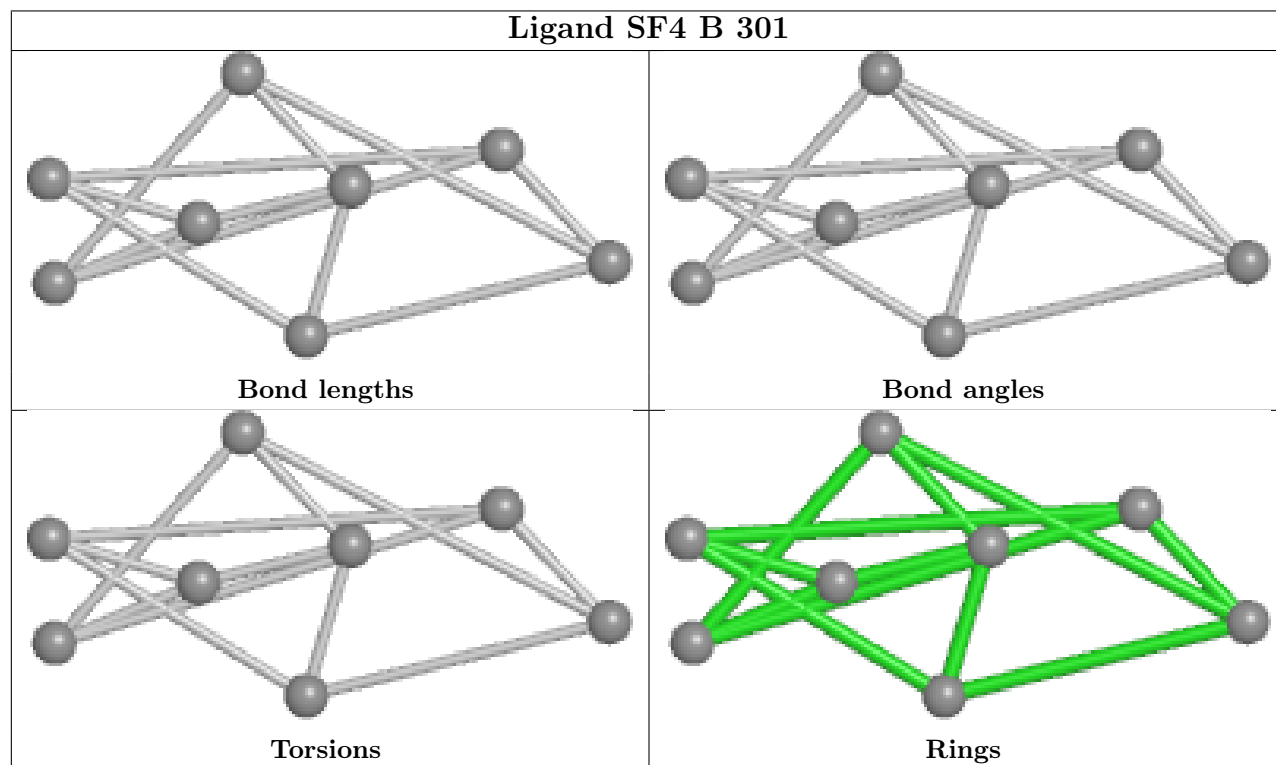
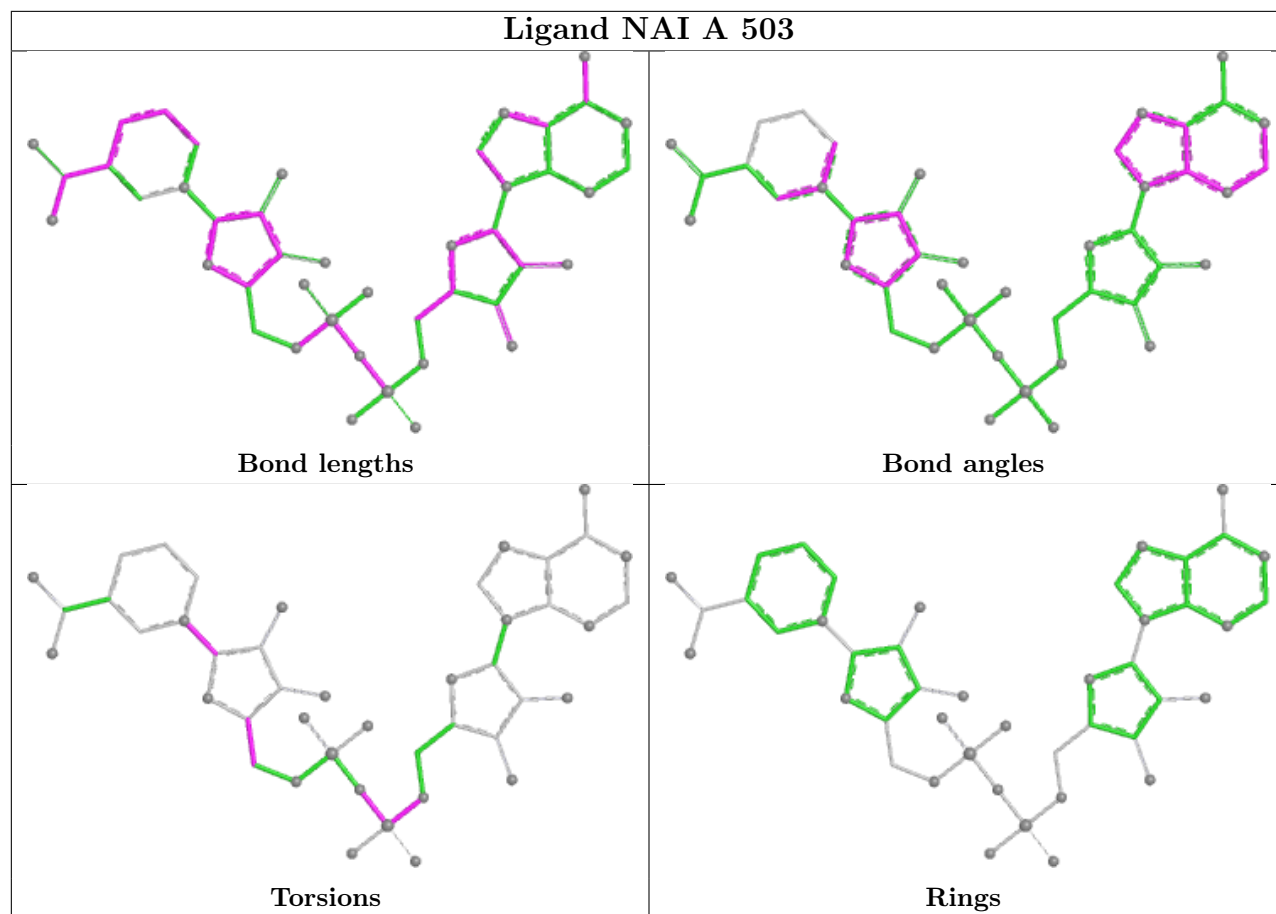
The following is a two-dimensional graphical depiction of Mogul quality analysis of bond lengths, bond angles, torsion angles, and ring geometry for all instances of the Ligand of Interest. In addition, ligands with molecular weight > 250 and outliers as shown on the validation Tables will also be included. For torsion angles, if less than 5% of the Mogul distribution of torsion angles is within 10 degrees of the torsion angle in question, then that torsion angle is considered an outlier. Any bond that is central to one or more torsion angles identified as an outlier by Mogul will be highlighted in the graph. For rings, the root-mean-square deviation (RMSD) between the ring in question and similar rings identified by Mogul is calculated over all ring torsion angles. If the average RMSD is greater than 60 degrees and the minimal RMSD between the ring in question and any Mogul-identified rings is also greater than 60 degrees, then that ring is considered an outlier. The outliers are highlighted in purple. The color gray indicates Mogul did not find sufficient equivalents in the CSD to analyse the geometry.

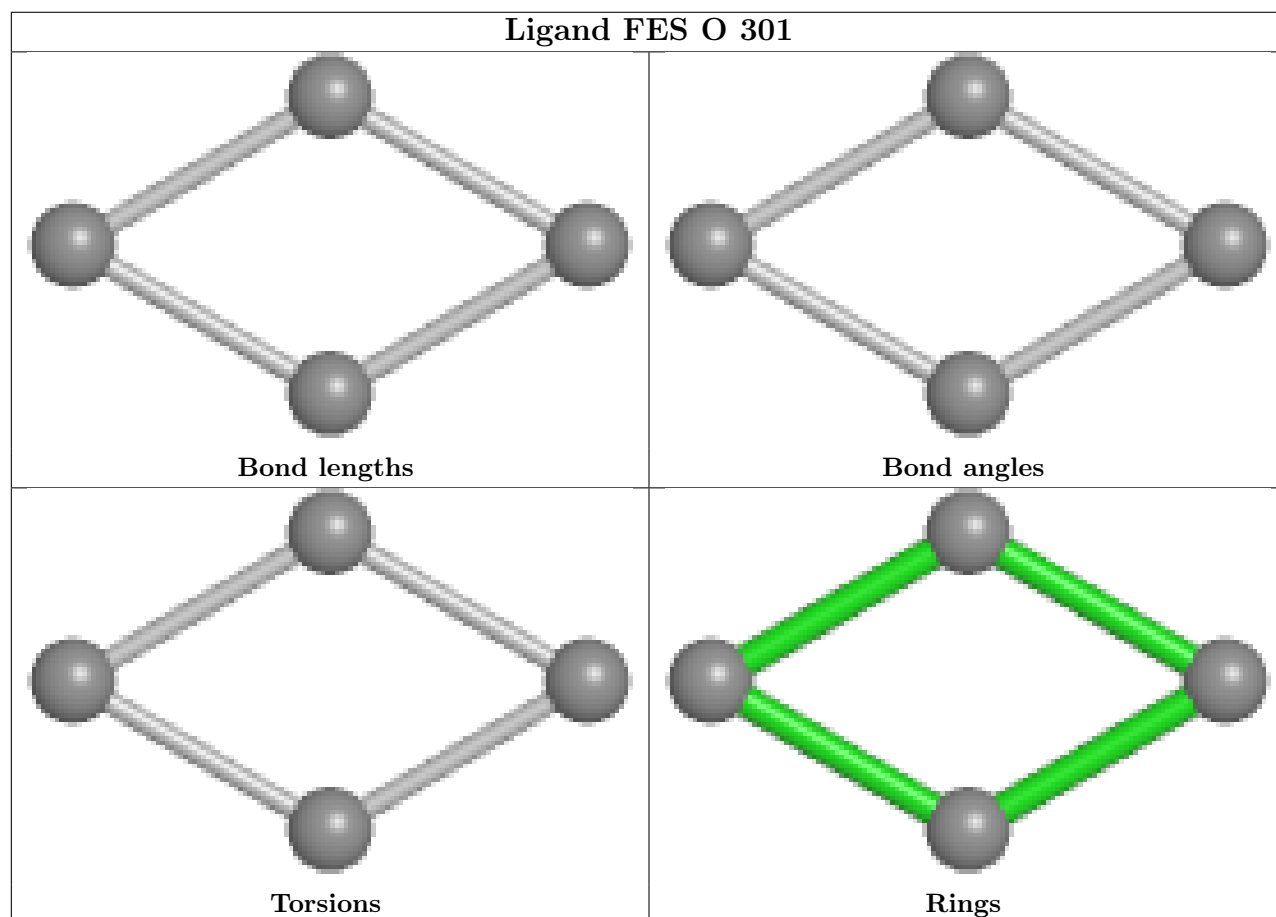
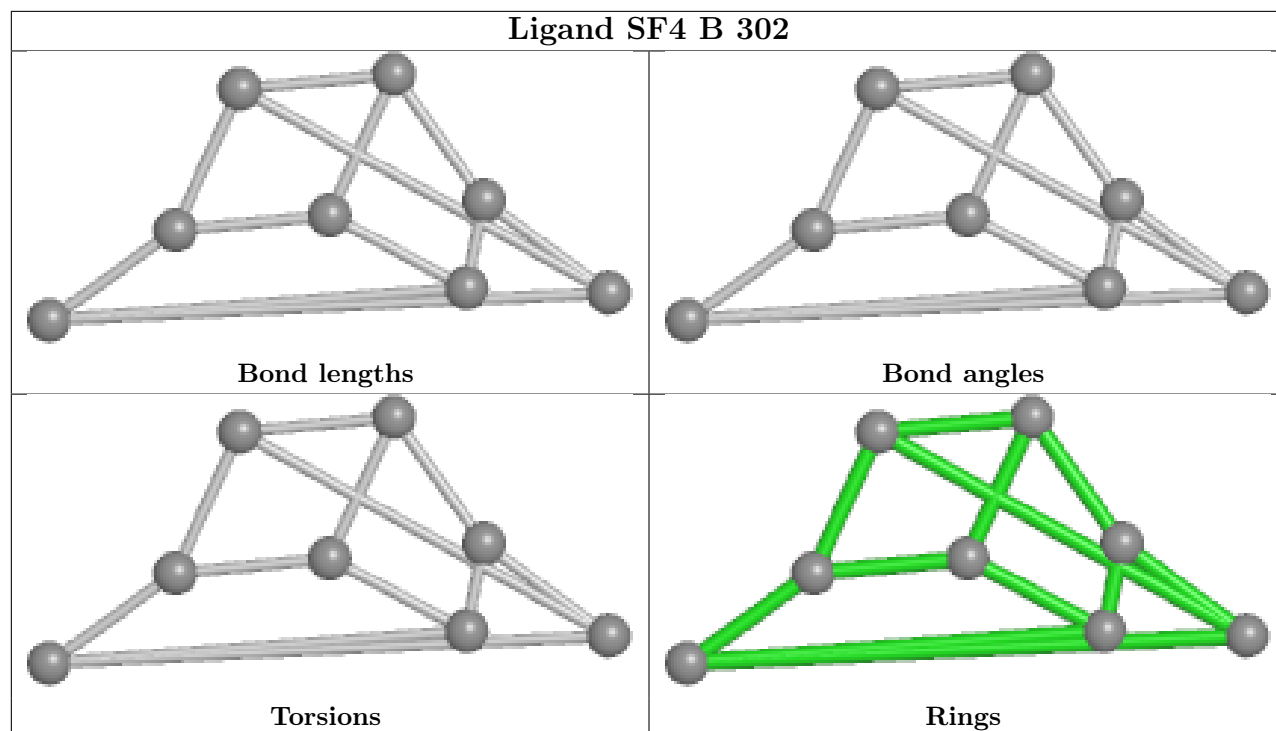


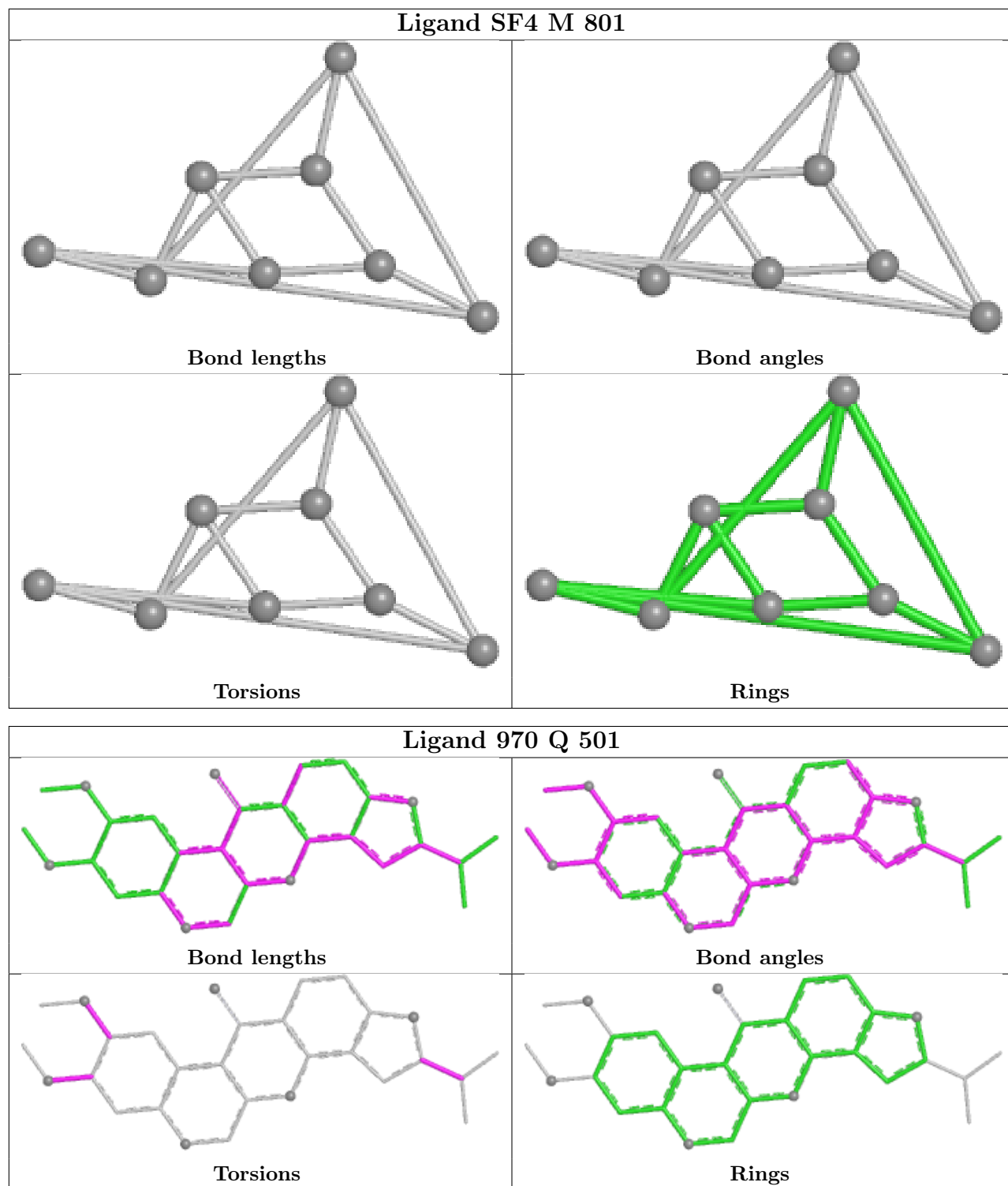


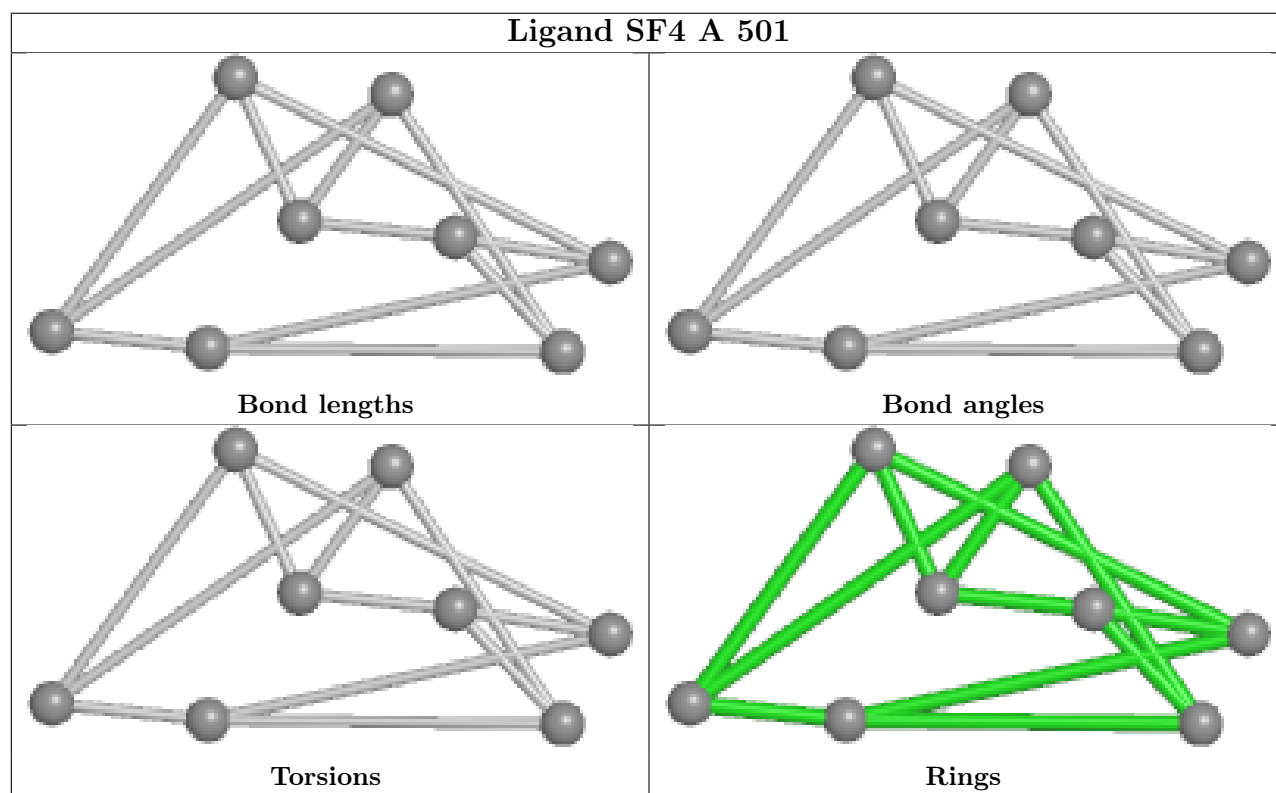
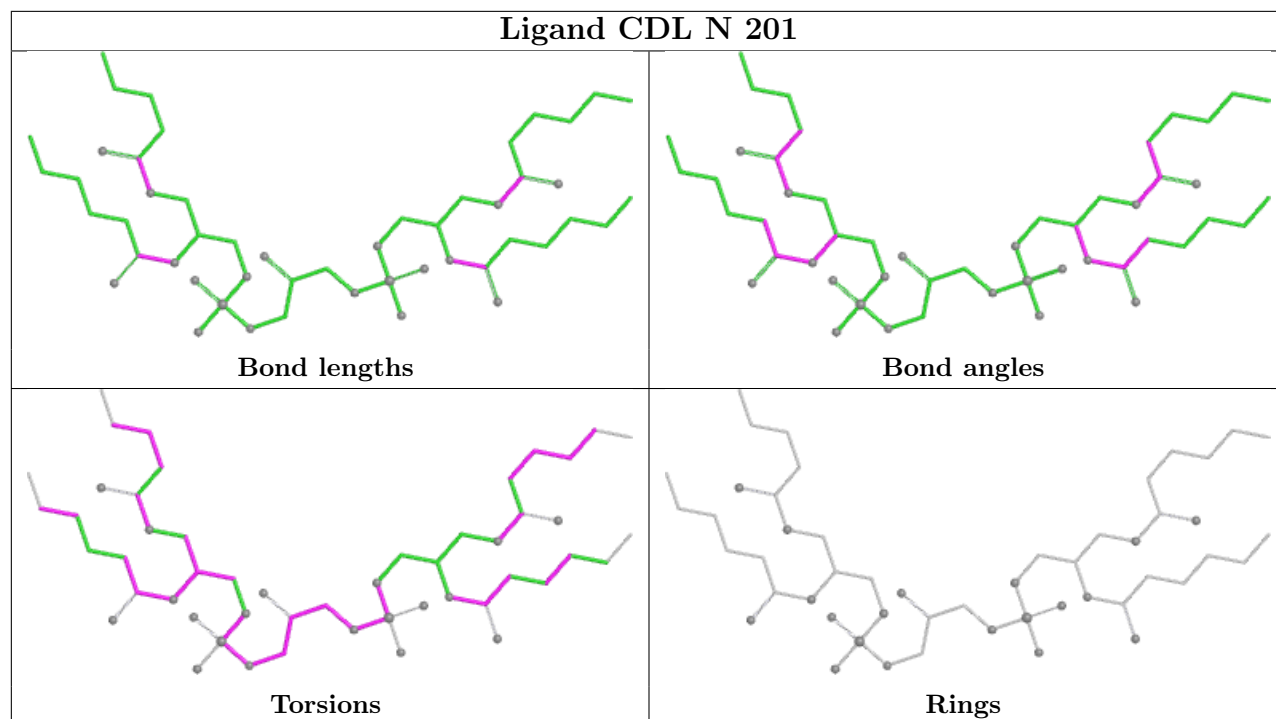


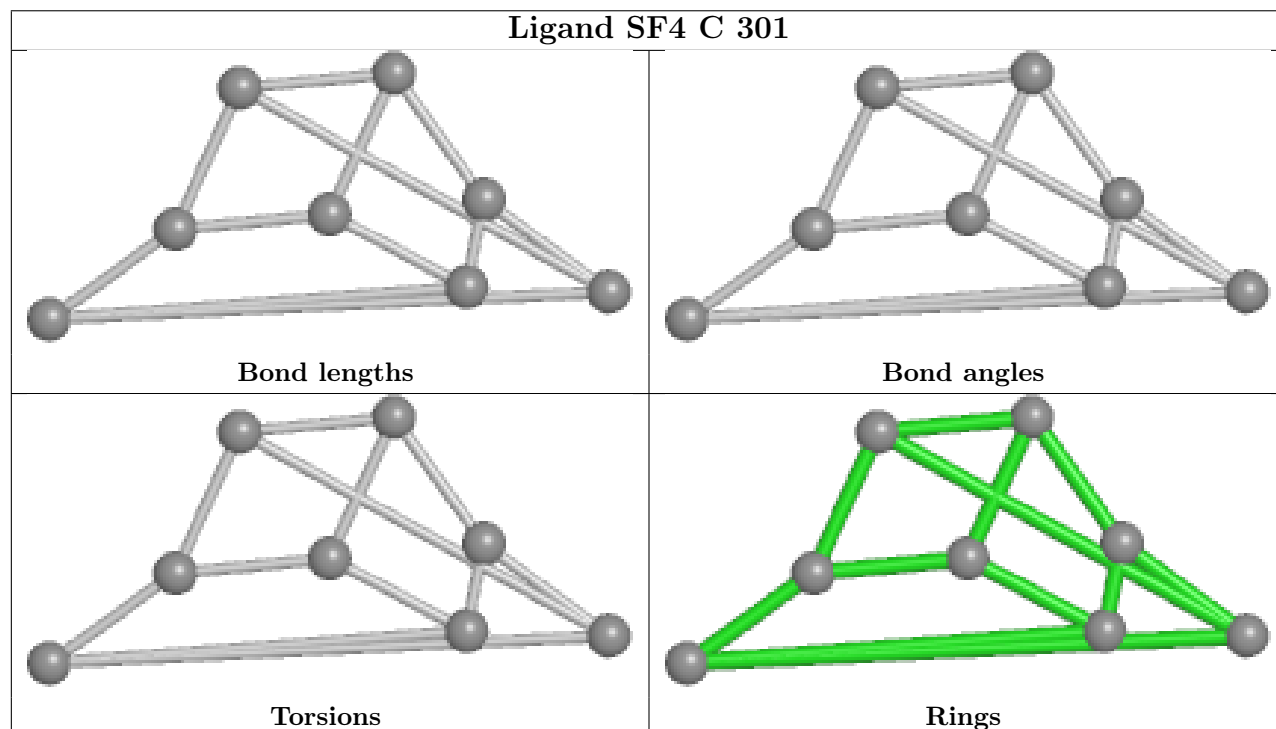
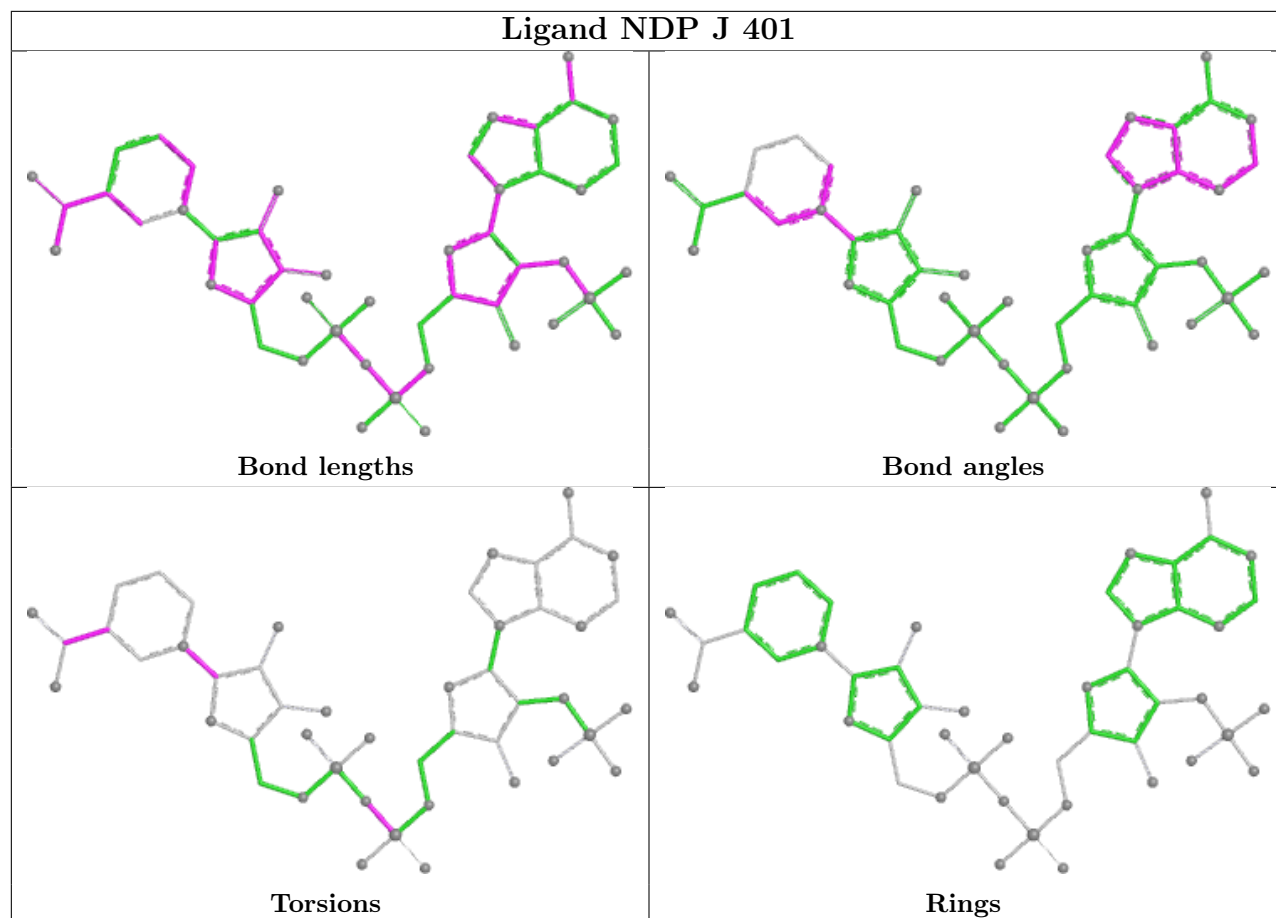


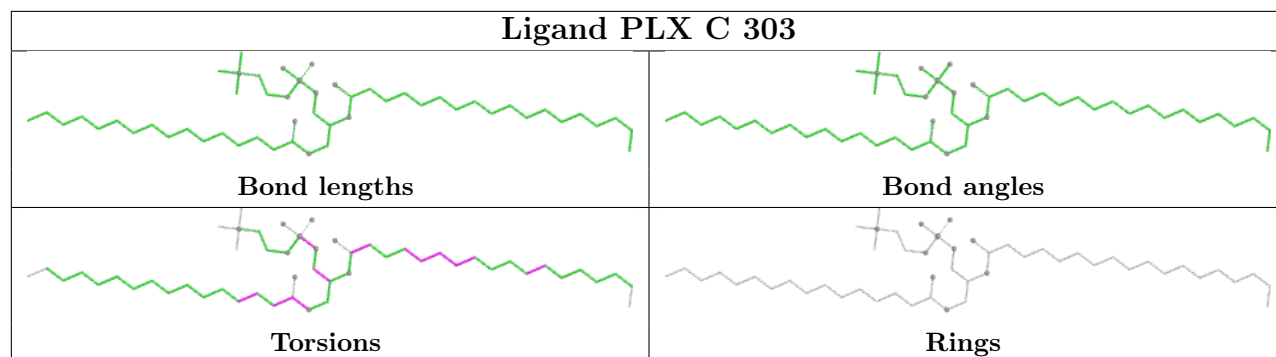












5.7 Other polymers [i](#)

There are no such residues in this entry.

5.8 Polymer linkage issues [i](#)

There are no chain breaks in this entry.

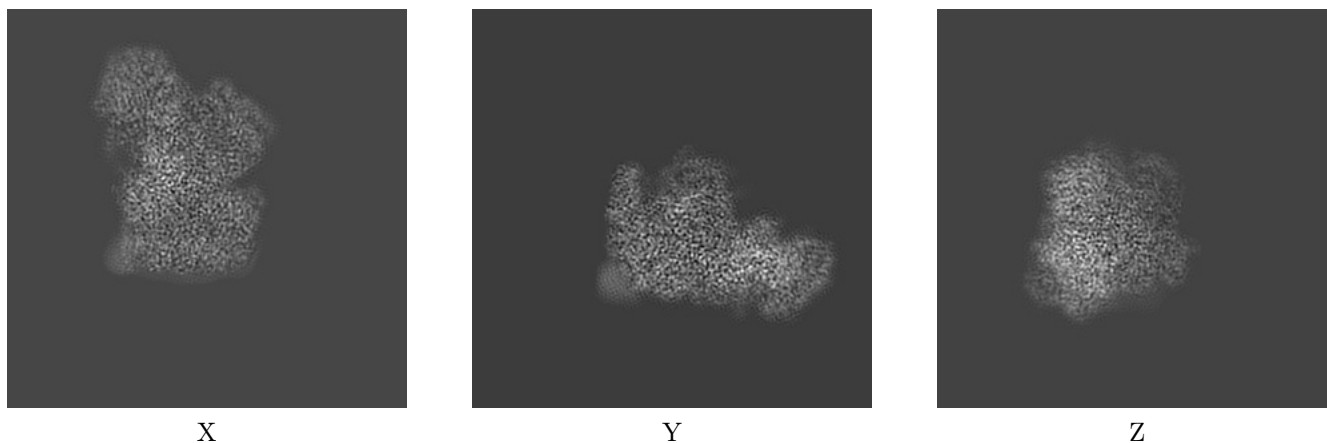
6 Map visualisation [i](#)

This section contains visualisations of the EMDB entry EMD-31886. These allow visual inspection of the internal detail of the map and identification of artifacts.

No raw map or half-maps were deposited for this entry and therefore no images, graphs, etc. pertaining to the raw map can be shown.

6.1 Orthogonal projections [i](#)

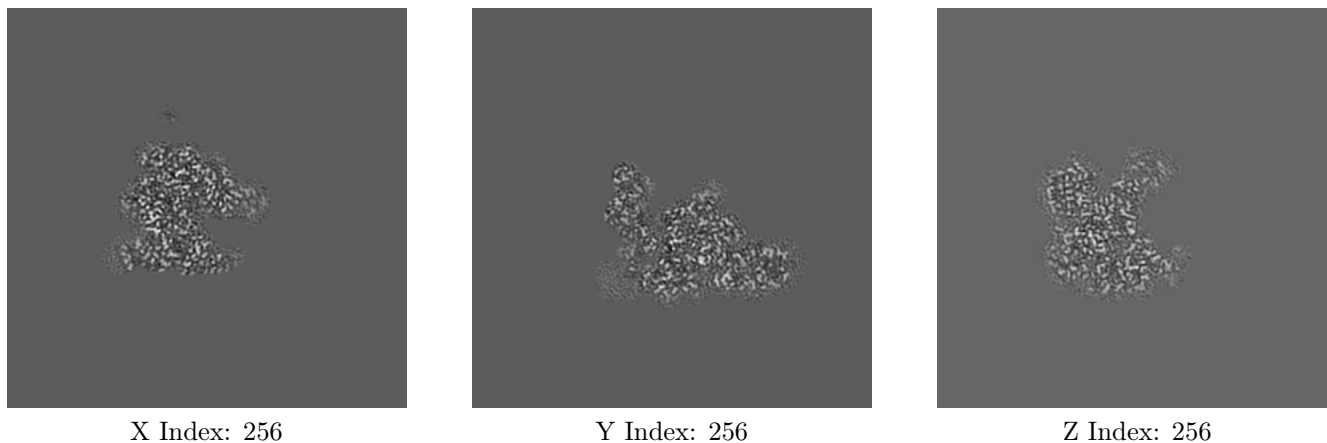
6.1.1 Primary map



The images above show the map projected in three orthogonal directions.

6.2 Central slices [i](#)

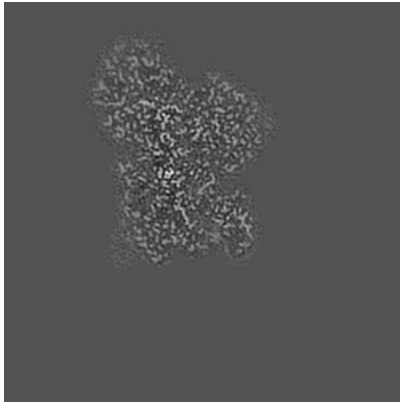
6.2.1 Primary map



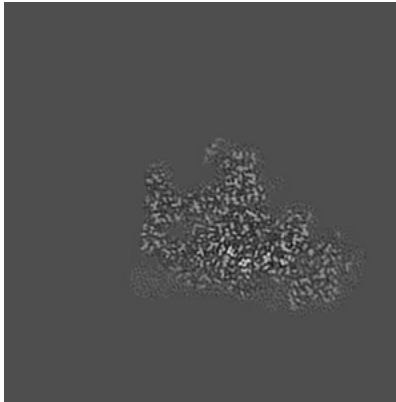
The images above show central slices of the map in three orthogonal directions.

6.3 Largest variance slices [i](#)

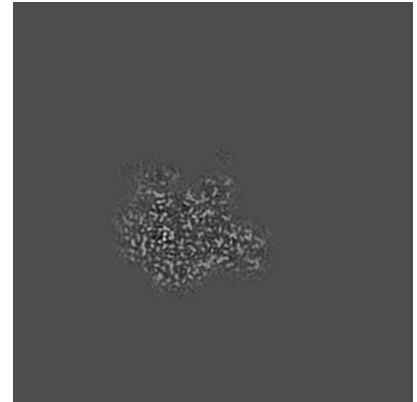
6.3.1 Primary map



X Index: 194



Y Index: 206

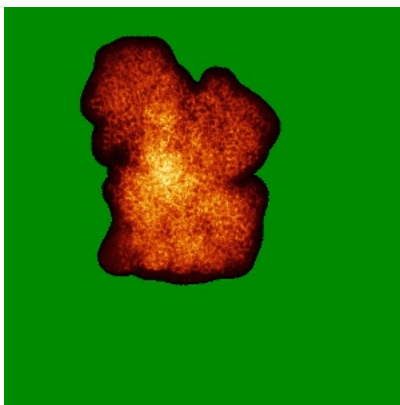


Z Index: 293

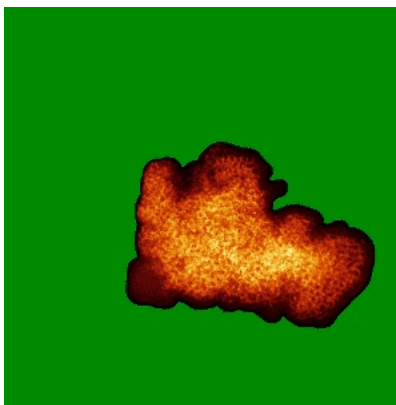
The images above show the largest variance slices of the map in three orthogonal directions.

6.4 Orthogonal standard-deviation projections (False-color) [i](#)

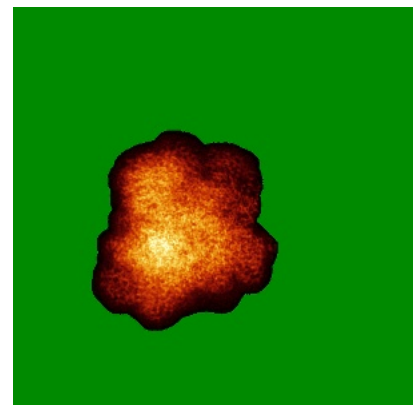
6.4.1 Primary map



X



Y

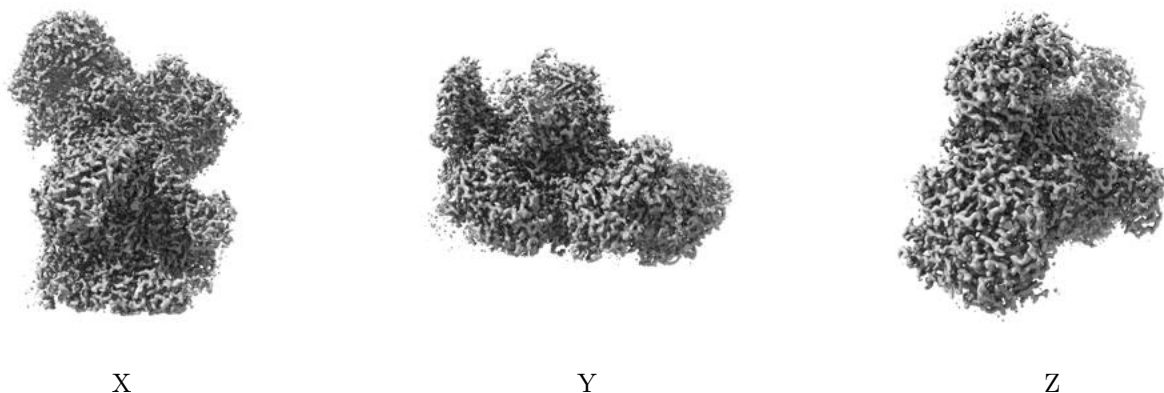


Z

The images above show the map standard deviation projections with false color in three orthogonal directions. Minimum values are shown in green, max in blue, and dark to light orange shades represent small to large values respectively.

6.5 Orthogonal surface views [i](#)

6.5.1 Primary map



The images above show the 3D surface view of the map at the recommended contour level 0.0152. These images, in conjunction with the slice images, may facilitate assessment of whether an appropriate contour level has been provided.

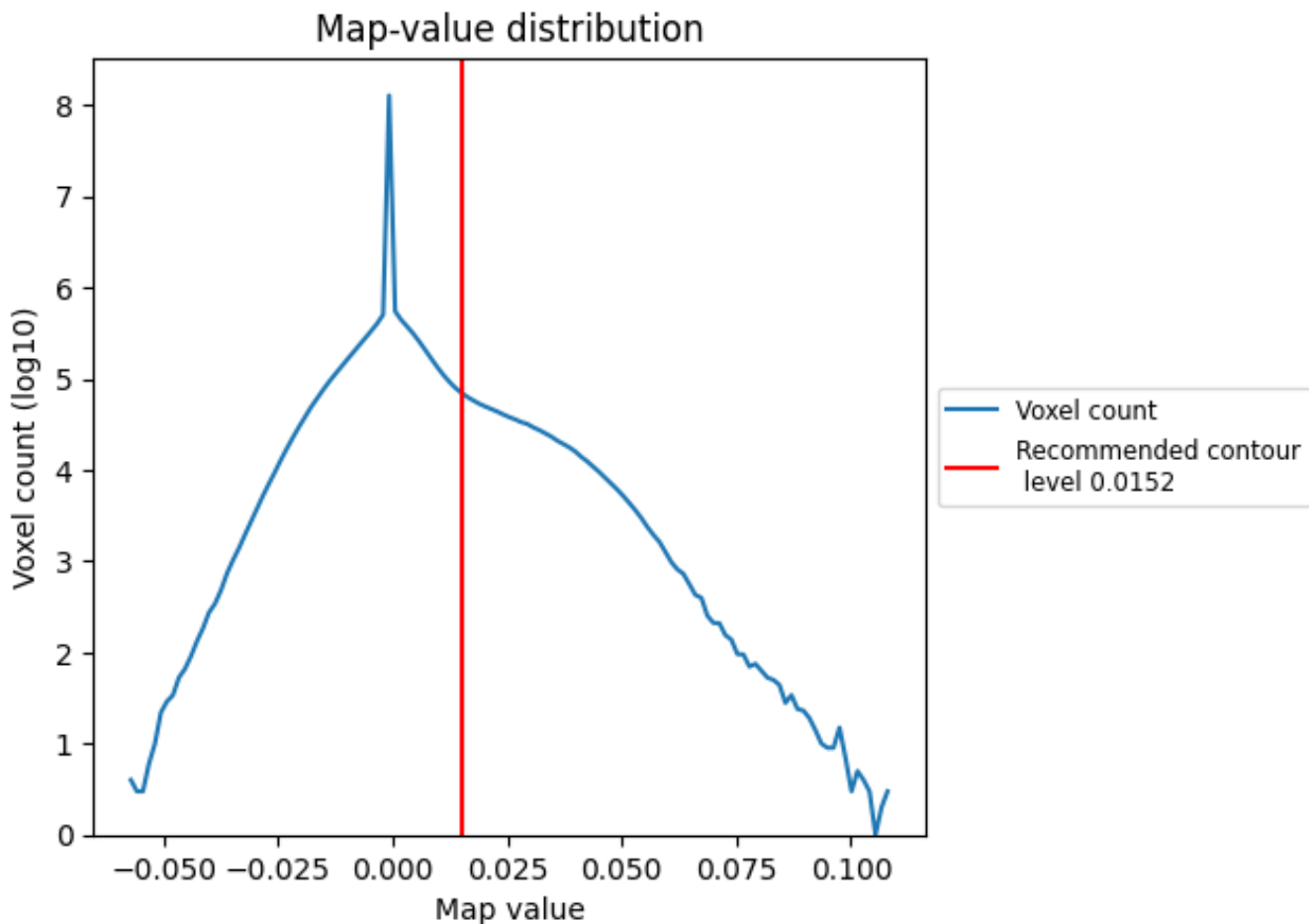
6.6 Mask visualisation [i](#)

This section was not generated. No masks/segmentation were deposited.

7 Map analysis [i](#)

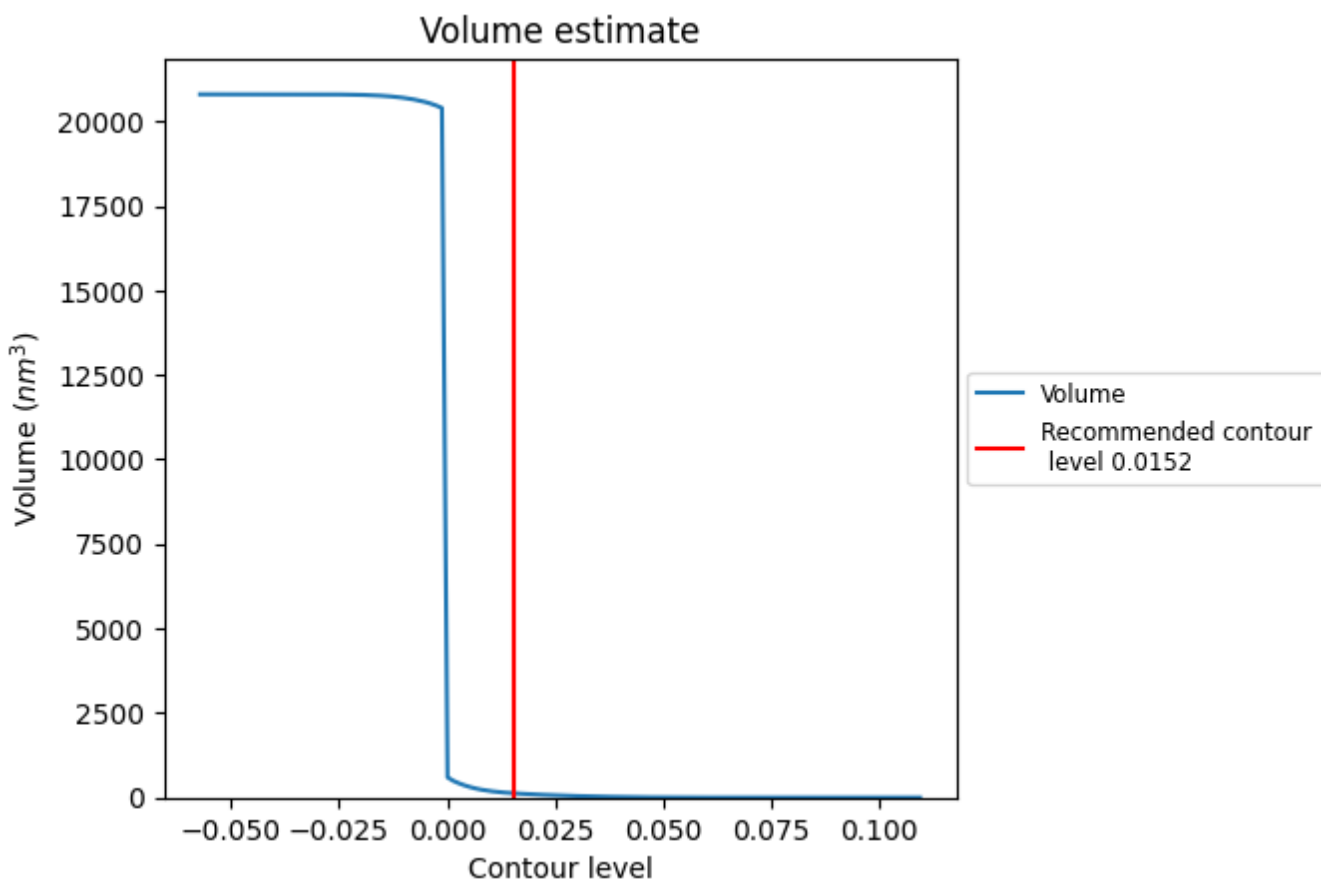
This section contains the results of statistical analysis of the map.

7.1 Map-value distribution [i](#)



The map-value distribution is plotted in 128 intervals along the x-axis. The y-axis is logarithmic. A spike in this graph at zero usually indicates that the volume has been masked.

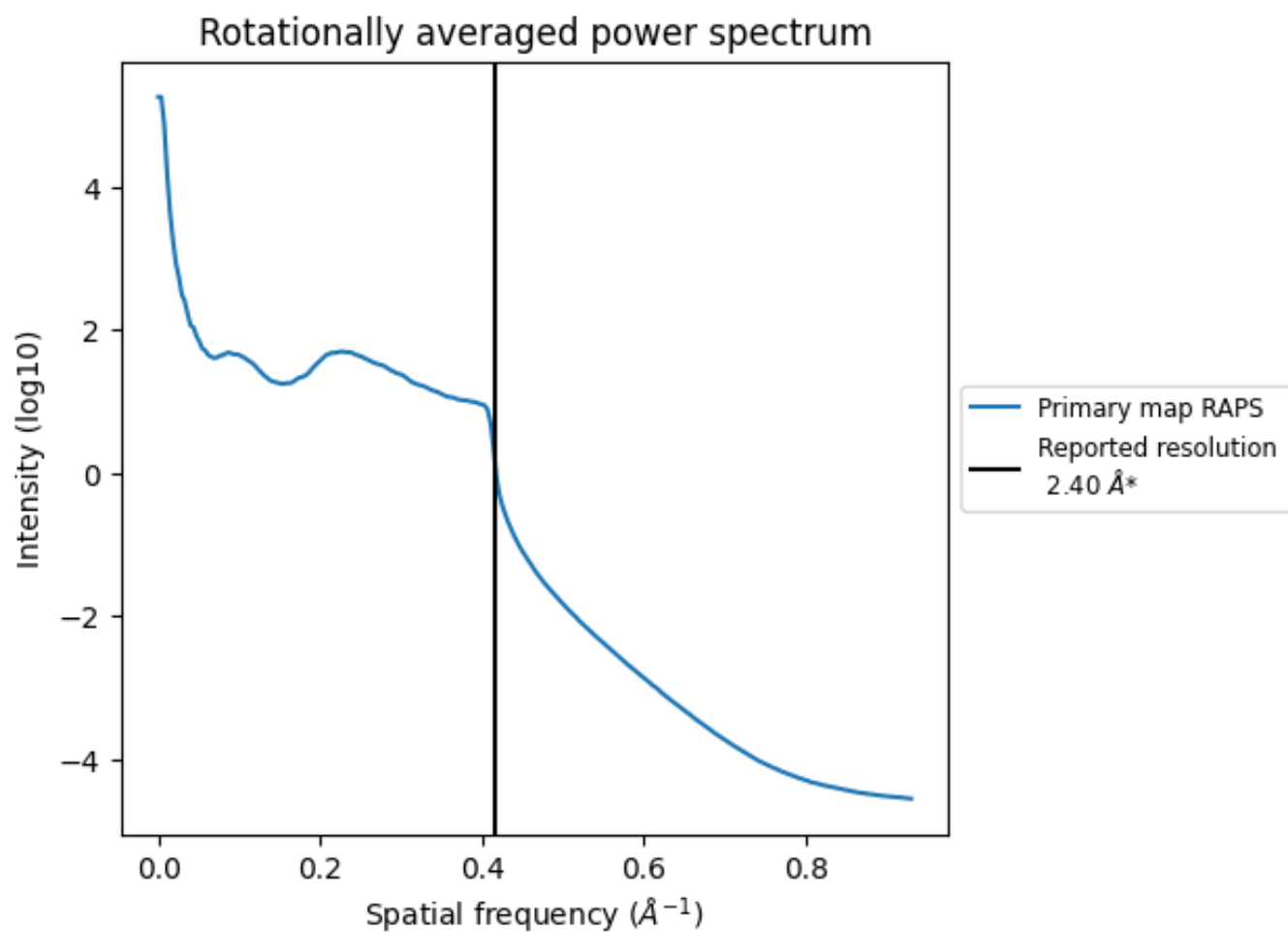
7.2 Volume estimate [\(i\)](#)



The volume at the recommended contour level is 128 nm³; this corresponds to an approximate mass of 116 kDa.

The volume estimate graph shows how the enclosed volume varies with the contour level. The recommended contour level is shown as a vertical line and the intersection between the line and the curve gives the volume of the enclosed surface at the given level.

7.3 Rotationally averaged power spectrum [i](#)



*Reported resolution corresponds to spatial frequency of 0.417\AA^{-1}

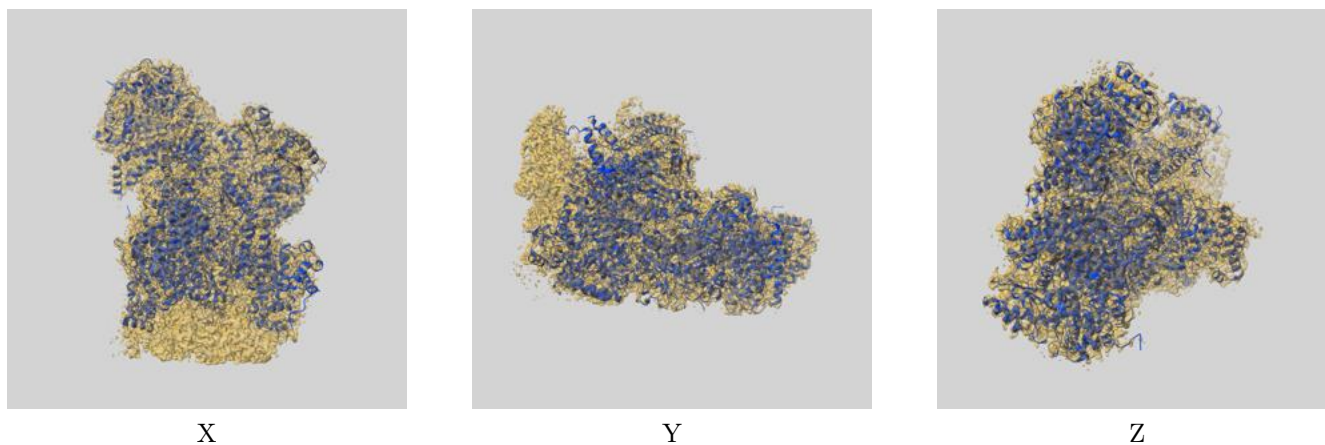
8 Fourier-Shell correlation

This section was not generated. No FSC curve or half-maps provided.

9 Map-model fit [i](#)

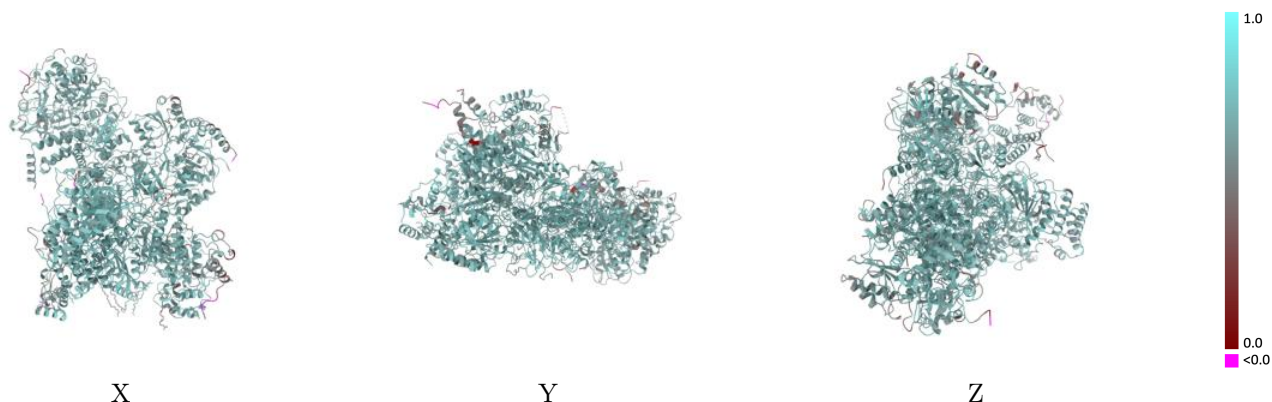
This section contains information regarding the fit between EMDB map EMD-31886 and PDB model 7VBZ. Per-residue inclusion information can be found in section 3 on page 15.

9.1 Map-model overlay [i](#)



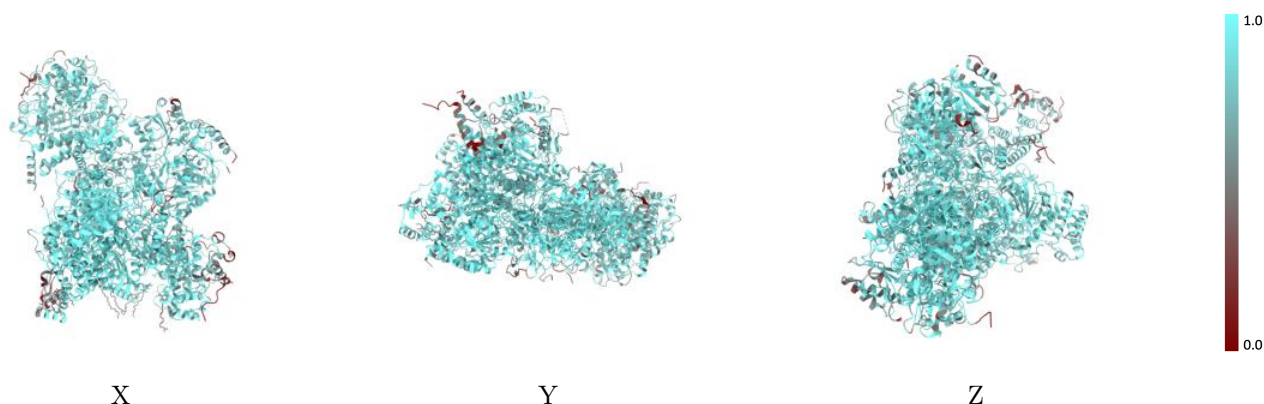
The images above show the 3D surface view of the map at the recommended contour level 0.0152 at 50% transparency in yellow overlaid with a ribbon representation of the model coloured in blue. These images allow for the visual assessment of the quality of fit between the atomic model and the map.

9.2 Q-score mapped to coordinate model [i](#)



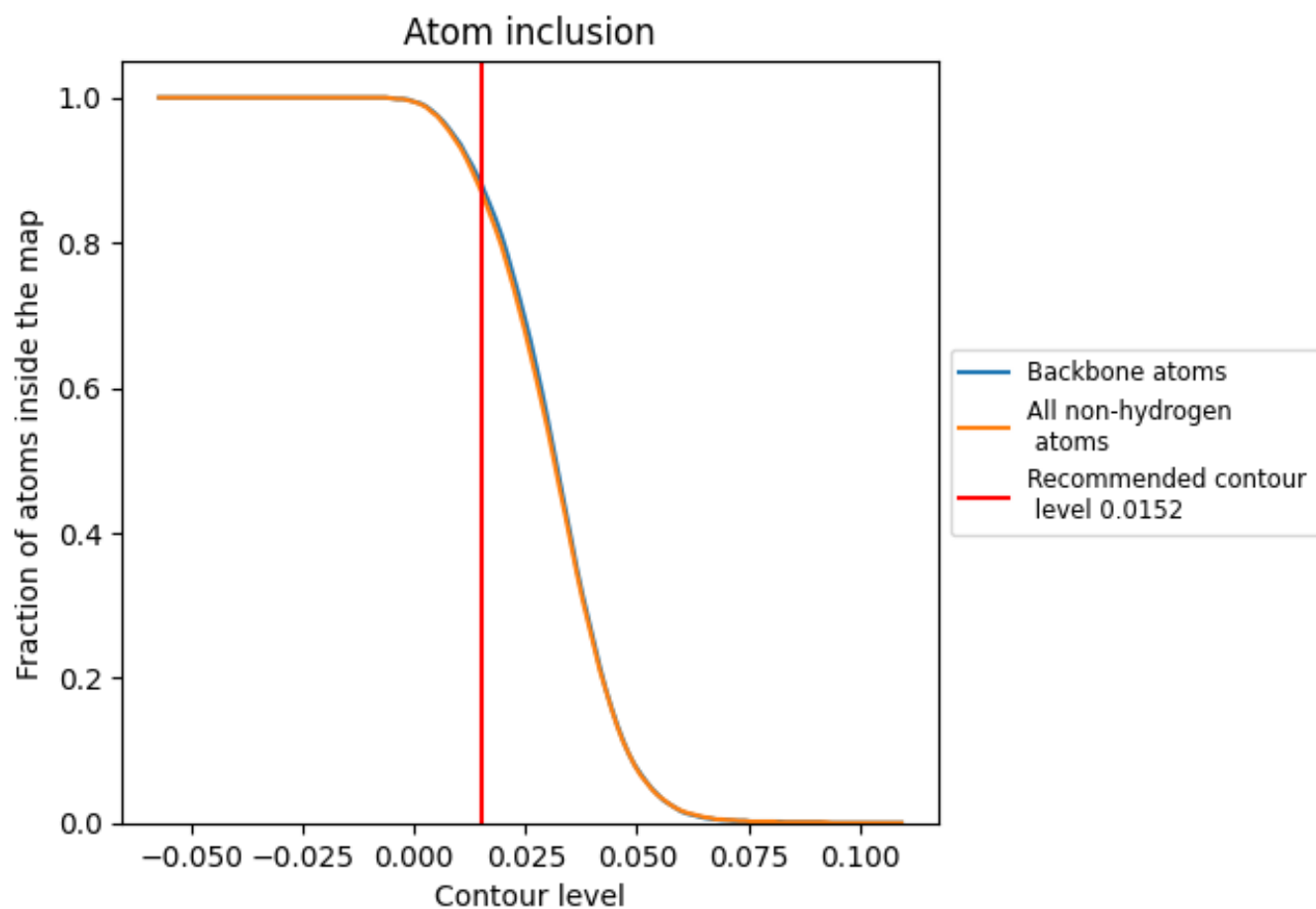
The images above show the model with each residue coloured according to its Q-score. This shows their resolvability in the map with higher Q-score values reflecting better resolvability. Please note: Q-score is calculating the resolvability of atoms, and thus high values are only expected at resolutions at which atoms can be resolved. Low Q-score values may therefore be expected for many entries.

9.3 Atom inclusion mapped to coordinate model [i](#)



The images above show the model with each residue coloured according to its atom inclusion. This shows to what extent they are inside the map at the recommended contour level (0.0152).





























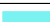









9.4 Atom inclusion [i](#)



At the recommended contour level, 88% of all backbone atoms, 87% of all non-hydrogen atoms, are inside the map.

9.5 Map-model fit summary

The table lists the average atom inclusion at the recommended contour level (0.0152) and Q-score for the entire model and for each chain.

Chain	Atom inclusion	Q-score
All	 0.8690	 0.6610
A	 0.8720	 0.6490
B	 0.9440	 0.7040
C	 0.9300	 0.6970
E	 0.8610	 0.6610
F	 0.7500	 0.5880
G	 0.5350	 0.4970
H	 0.8640	 0.6450
I	 0.7210	 0.6070
J	 0.8940	 0.6670
K	 0.7070	 0.5830
L	 0.8750	 0.6740
M	 0.9000	 0.6740
N	 0.7660	 0.6360
O	 0.7980	 0.6170
P	 0.9500	 0.7060
Q	 0.9680	 0.7090
T	 0.8170	 0.6510
W	 0.7270	 0.5830

